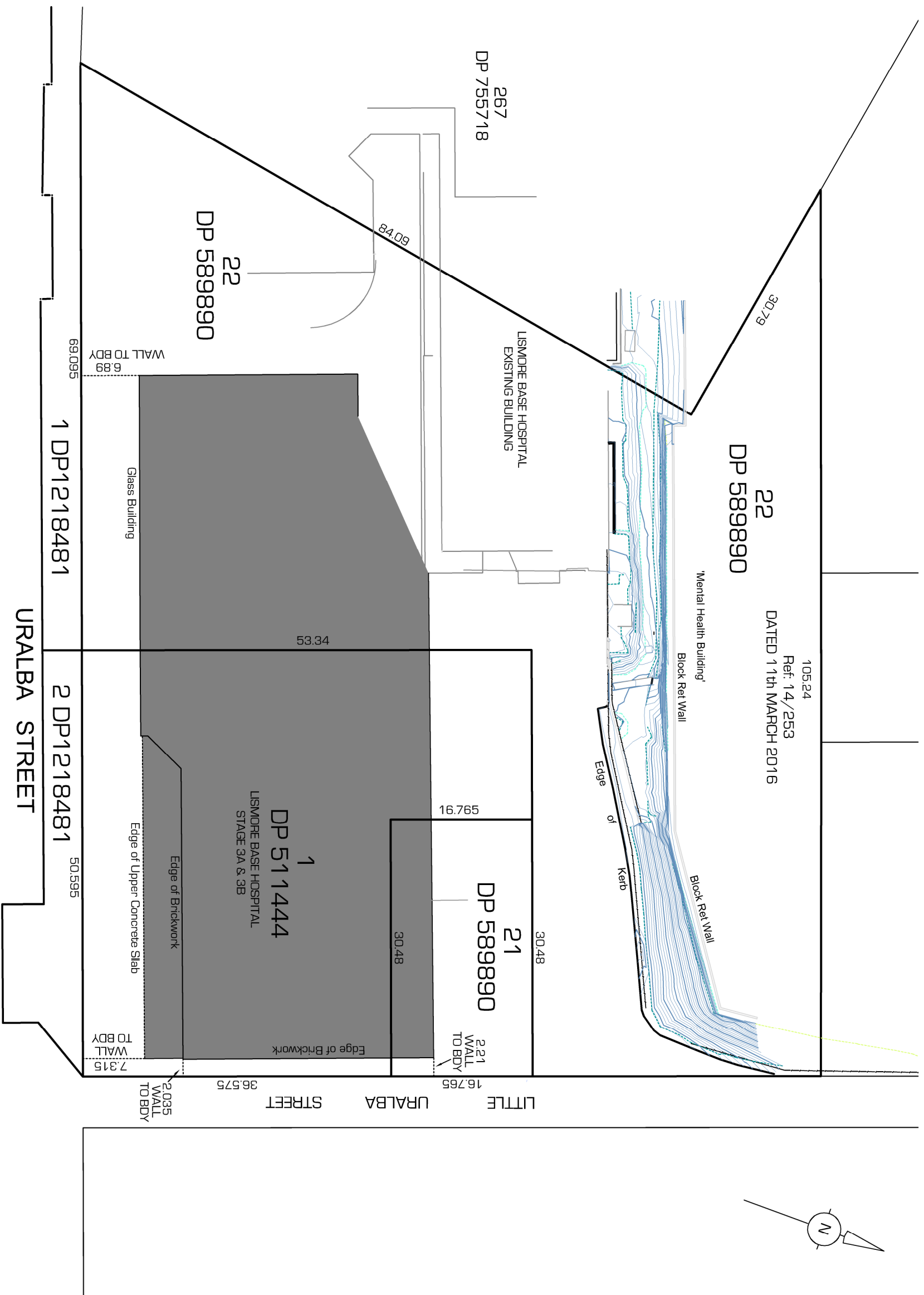


- FLOOR LEVELS**
(STAGE 3A & 3B)
- LEVEL 3 R.L. 27.28
 - LEVEL 4 R.L. 31.48
 - LEVEL 5 R.L. 35.68
 - LEVEL 6 R.L. 40.13
 - LEVEL 7 R.L. 44.68
 - LEVEL 8 R.L. 49.18
 - LEVEL 9 R.L. 53.34
 - LEVEL 10 R.L. 57.54
 - LEVEL 11 R.L. 61.74
 - LEVEL 12 R.L. 65.97
 - LEVEL 13 R.L. 70.14



105.24
Ref: 14/253
DATED 11th MARCH 2016

Client: JOHN HOLLAND GROUP

Drawn: P.M

NDBE
Newton Denny Chapelle
Surveyors Planners Engineers

Lismore
1/31 Carrington St. Lismore 2480
T: 66 221011 F: 66 224088
Casino
100 Barker St. Casino 2470
T & F : 66 625000

Email: office@newtondennychapelle.com.au

Legend:

Project:

STAGE 3C
LISMORE BASE HOSPITAL
URALBA STREET, LISMORE

Datum: AHD

Ref No. 17633

Scale 1:400@A3

Date: 22/2/2018