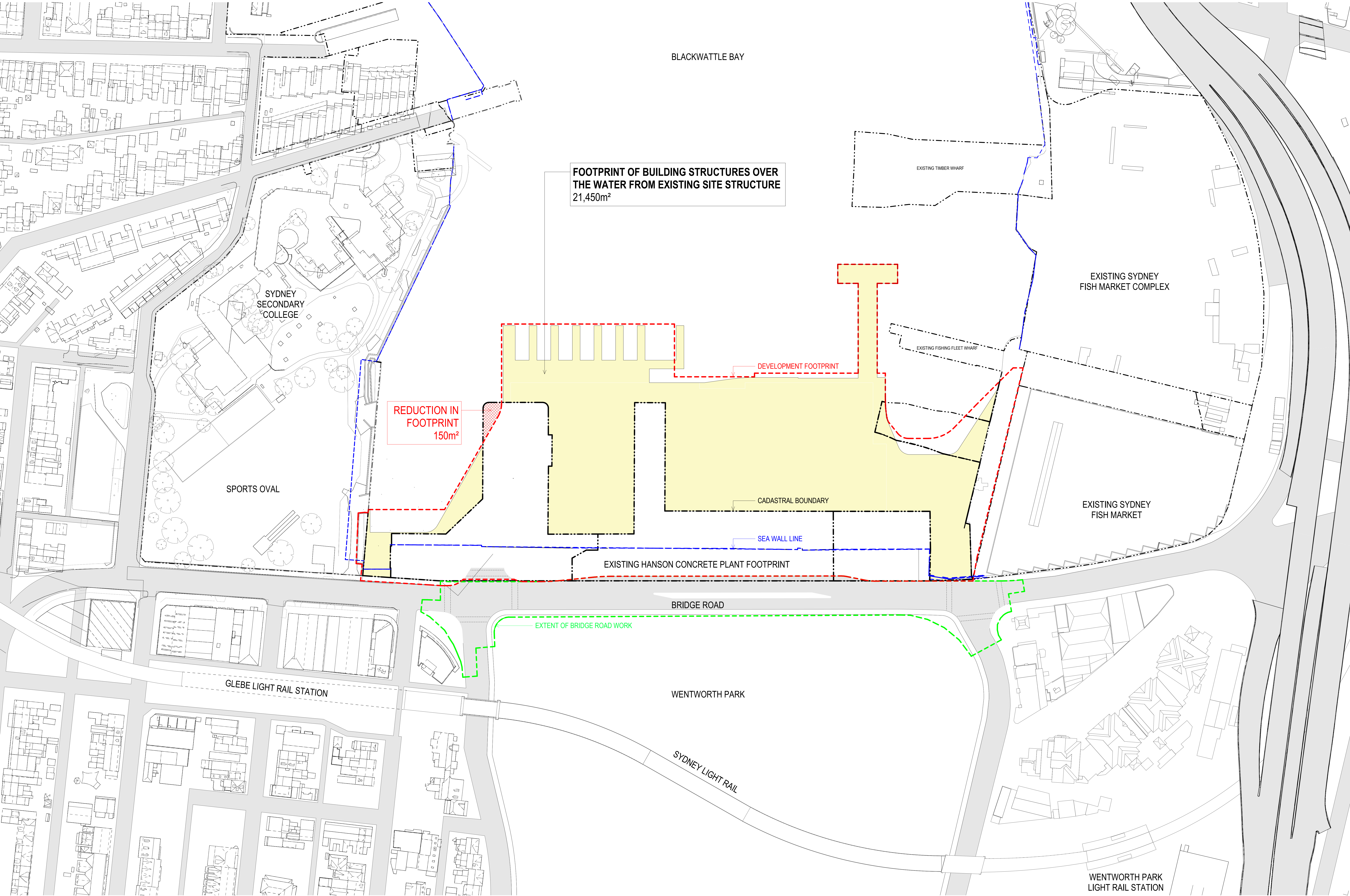
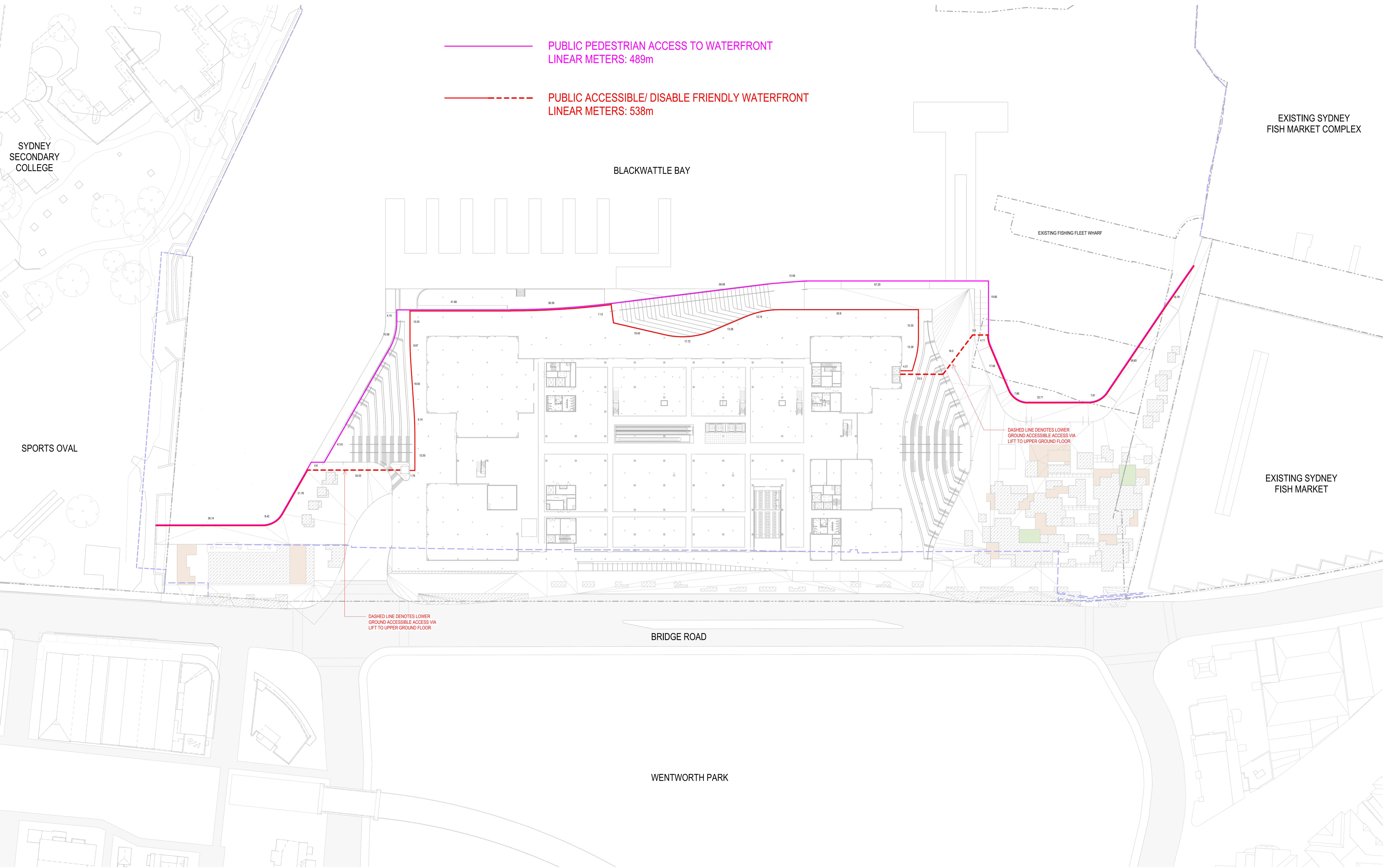


DA QUERY RESPONSE - FOOTPRINT OF BUILDING STRUCTURES OVER THE WATER (m²)





DA QUERY RESPONSE - LINEAR METRES OF PEDESTRIAN ACCESS ALONG THE WATERFRONT



1 UPPER GROUND FLOOR PLAN  
1:500

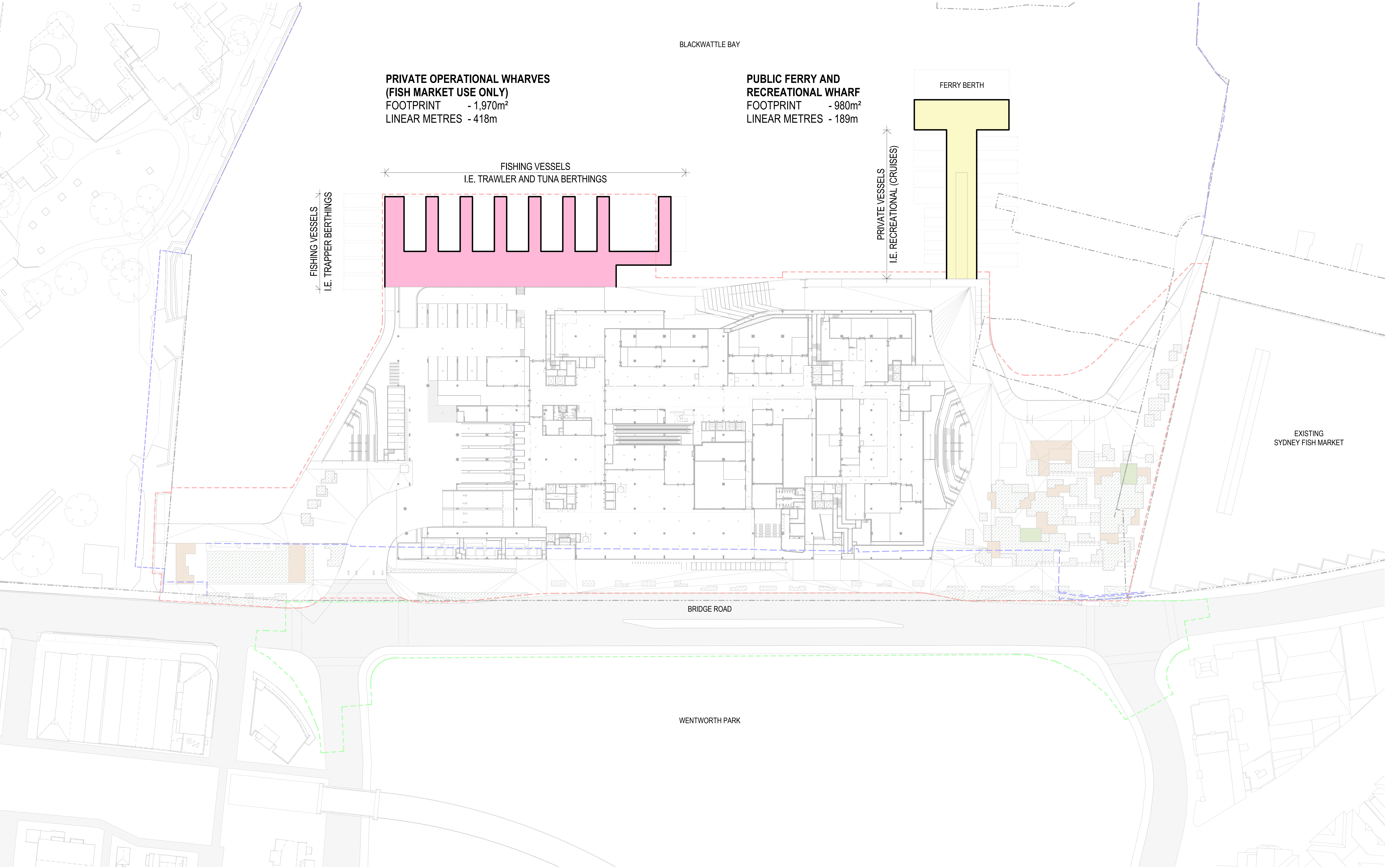
NOTES -

- LINEAR METERS MEASUREMENT APPROXIMATE ONLY.
- PLAN DRAWING REPRESENTATION FOR DIAGRAM PURPOSE ONLY.



# DA QUERY RESPONSE - FOOTPRINT OF WHARVES/ NAGIVATION STRUCTURES (m² / LINEAR METRES)

BY TYPE OF VESSEL SERVICED; PUBLICLY ACCESSIBLE TO ALL; PUBLICLY ACCESSIBLE (E.G, CRUISES); FISH MARKET USE ONLY; AND PRIVATE USE ONLY



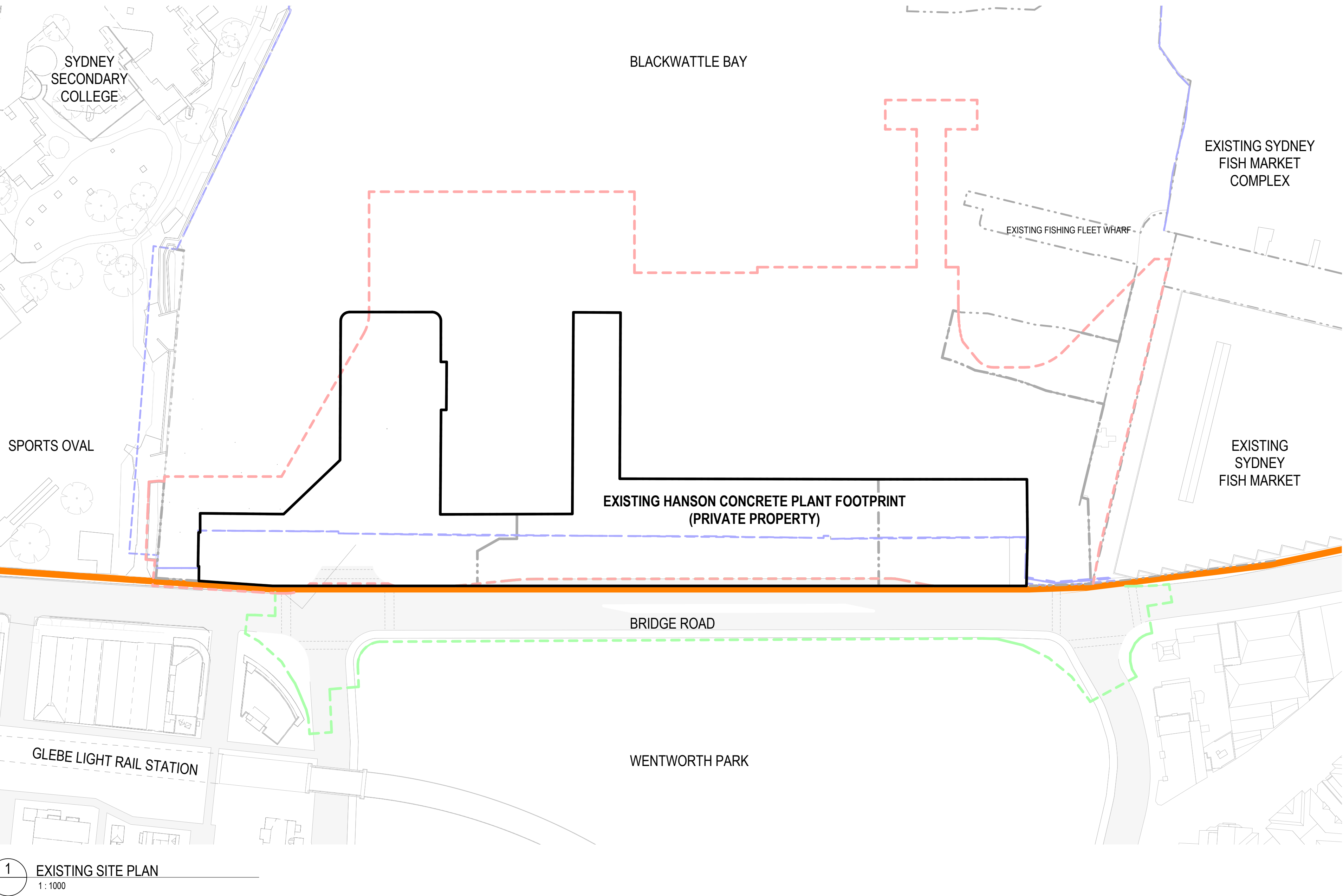
1 LOWER GROUND FLOOR PLAN  
1:500

- NOTES -
- LINEAR METERS MEASUREMENT APPROXIMATE ONLY.
  - PLAN DRAWING REPRESENTATION FOR DIAGRAM PURPOSE.



DA QUERY RESPONSE - PROVIDE PLANS ILLUSTRATING THE EXISTING AND PROPOSED PUBLIC DOMAIN/ ACCESSIBLE AREAS.

EXISTING



ACCESSIBLE ONLY ALONG BRIDGE ROAD/ ADJACENT TO SITE AS PLANT IS PRIVATE PROPERTY.

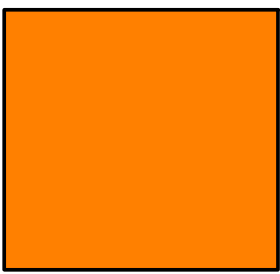


View of existing Bridge Road northern footpath looking west with coal bin loader on right side.



View of existing footpath looking west at concrete batching tower.

LEGEND



PUBLIC DOMAIN/ ACCESSIBLE AREAS

PROPOSED

