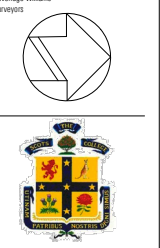


1 Proposed Ground Floor Plan  
 Scale: 1:200. Black Watch  
 INDICATIVE PLAN SHOWN

GFA: 635m<sup>2</sup>

- GENERAL NOTES**
- Consult with ALL relevant authorities prior to commencing works
  - DO NOT scale. All dimensions are nominal + should be confirmed on site prior to commencement
  - Obtain setting out information from architect PRIOR to commencement
  - Bring discrepancies to the immediate attention of the Architect
  - If unsure of any aspect of the works seek instruction from the Architect before proceeding
  - All drawings must be read in conjunction with the council consent, specification, schedules, site notes + instructions issued by the Architect
  - This material / work is protected by Copyright

- CONSULTANTS**
- TPGS Quantity Surveyors
  - BBC Planning Consultant
  - ACV Mechanical Engineer
  - Code Performance Accessibility Consultant
  - PBE Structural Engineer
  - BCG BCA Consultant
  - JCI Hydraulic Engineer
  - Riley Mac Fire Consultant
  - MCD Fire Engineer
  - IMEA Electrical Engineer
  - BCG BCA Consultant
  - Dunridge Williams Surveyors



**CLIENT**  
 STEVEN ADAMS  
 THE SCOTS COLLEGE

**PROJECT**  
 MAJOR ALTERATIONS + ADDITIONS TO THE STEVENSON LIBRARY (SSD 8922)

**ADDRESS**  
 29-53 Victoria Rd  
 Bellevue Hill, NSW

**DRAWING TITLE**  
 PROPOSED GROUND FLOOR PLAN

**DRAWN BY**  
 JC, CF, JW, ZW

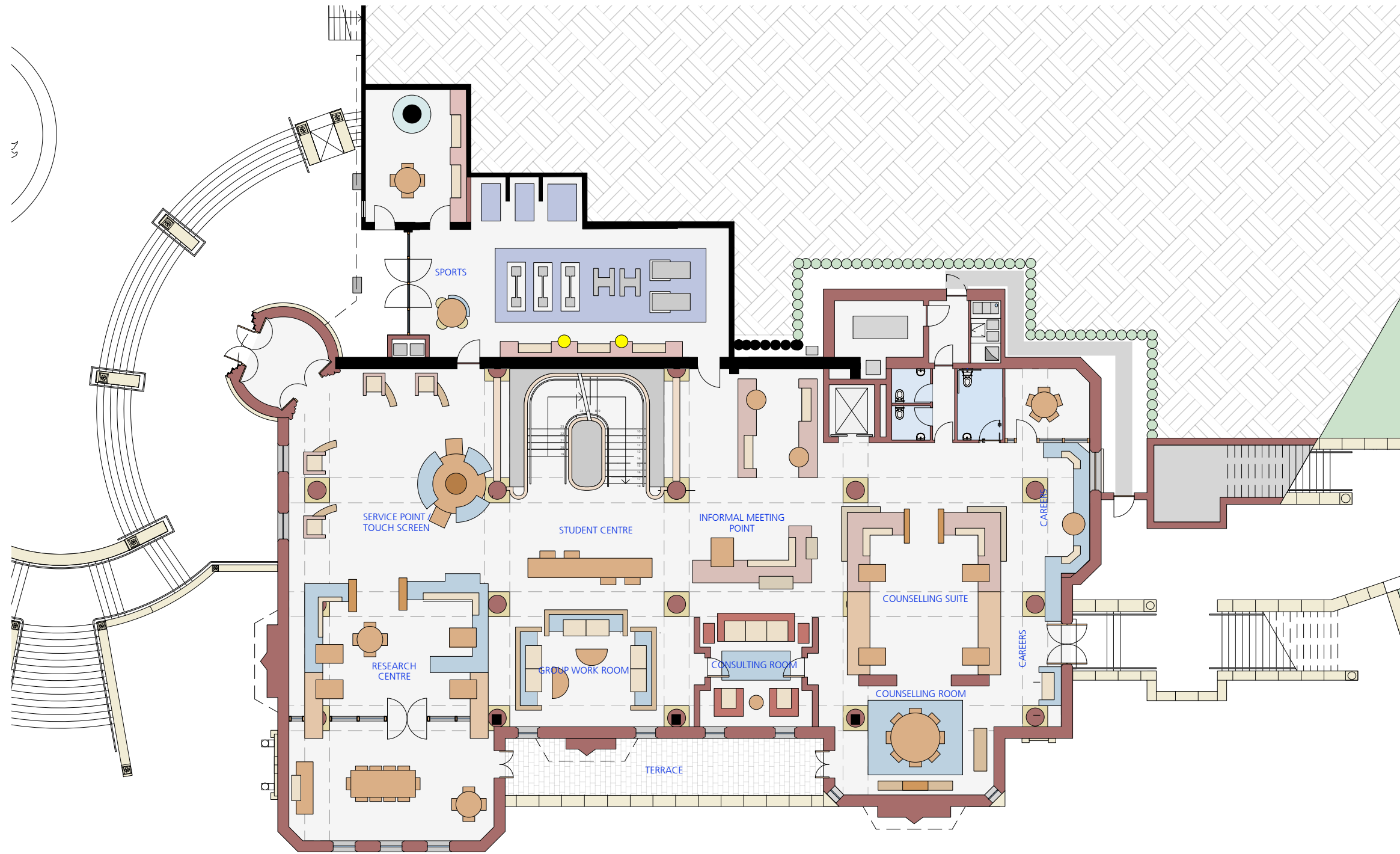
**SCALE**  
 1:200 @ A3

**ISSUE**  
 SEARS

**REVISION**  
 S1

**DATE**  
 JUNE 2018

**DRAWING NUMBER**



1 Proposed First Floor Plan  
Scale: 1:200. Reception

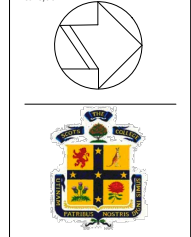
GFA: 668m<sup>2</sup>

**GENERAL NOTES**

- Consult with ALL relevant authorities prior to commencing works
- DO NOT scale. All dimensions are nominal + should be confirmed on site prior to commencement
- Obtain setting out information from architect PRIOR to commencement
- Bring discrepancies to the immediate attention of the Architect
- If unsure of any aspect of the works seek instruction from the Architect before proceeding
- All drawings must be read in conjunction with the council consent, specification, schedules, site notes + instructions issued by the Architect
- This material / work is protected by Copyright

**CONSULTANTS**

- TPGS Quantity Surveyors
- BBC Planning Consultant
- ACV Mechanical Engineer
- Code Performance Accessibility Consultant
- PBE Structural Engineer
- BCG BCA Consultant
- JCL Hydraulic Engineer
- Wiley Mac Fire Consultant
- MCD Fire Engineer
- UMEA Electrical Engineer
- BCG BCA Consultant
- Bearidge Williams Surveyors



**CLIENT**  
STEVEN ADAMS  
THE SCOTS COLLEGE

**PROJECT**  
MAJOR ALTERATIONS + ADDITIONS TO THE STEVENSON LIBRARY (SSD 8922)

**ADDRESS**  
29-53 Victoria Rd  
Bellevue Hill, NSW

**DRAWING TITLE**  
PROPOSED FIRST FLOOR PLAN

**DRAWN BY**  
JC, CF, JW, ZW

**SCALE**  
1:200 @ A3

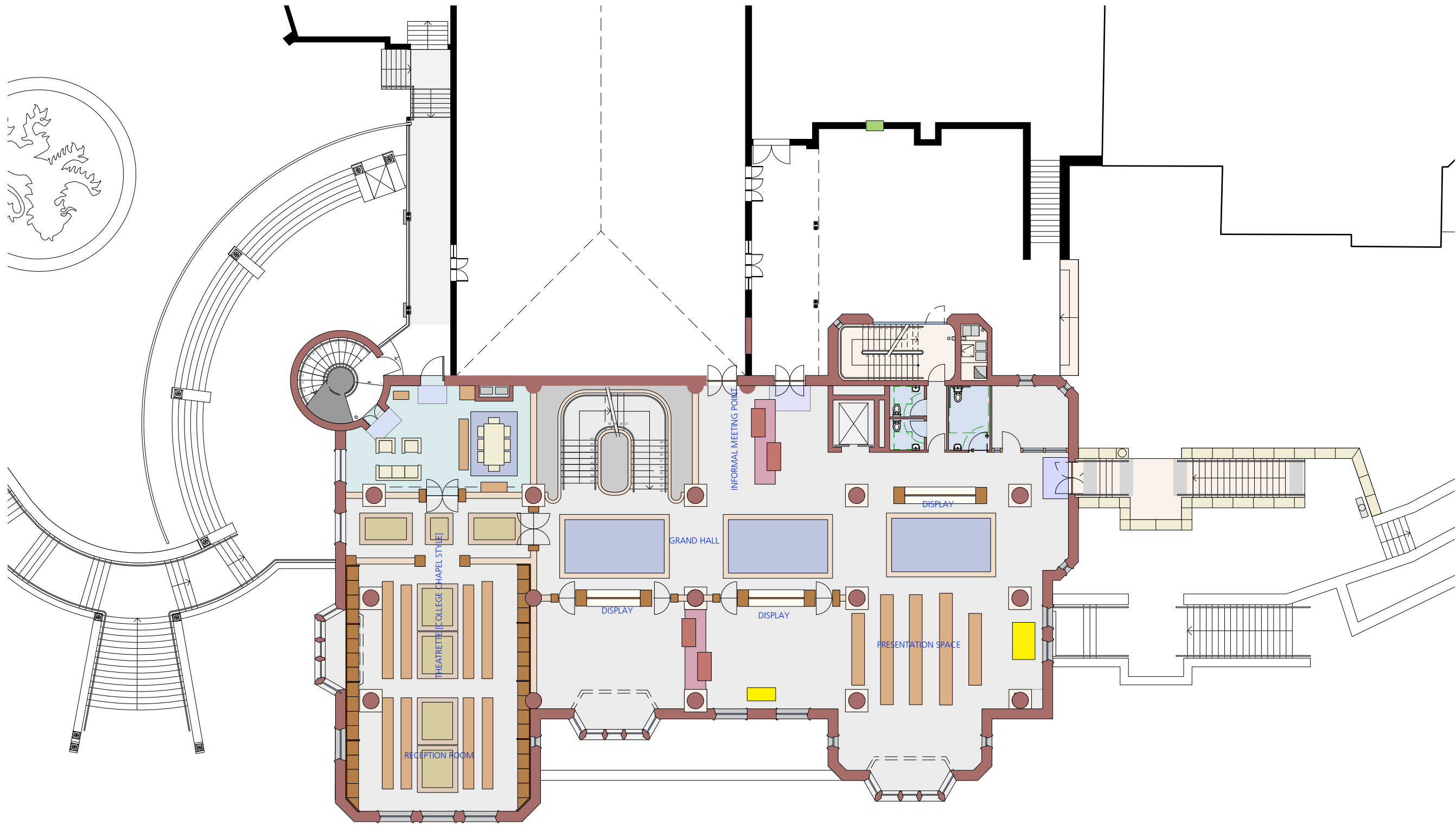
**ISSUE**  
SEARS

**REVISION**  
S1

**DATE**  
JUNE 2018

**DRAWING NUMBER**

SSD1.02/17-202.1



1 Proposed Second Floor Plan  
Scale: 1:200. Student Health

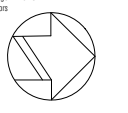
Floor Area: 575m<sup>2</sup>

**GENERAL NOTES**

- Consult with ALL relevant authorities prior to commencing works
- DO NOT scale. All dimensions are nominal + should be confirmed on site prior to commencement
- Obtain setting out information from architect PRIOR to commencement
- Bring discrepancies to the immediate attention of the Architect
- If unsure of any aspect of the works seek instruction from the Architect before proceeding
- All drawings must be read in conjunction with the council consent, specification, schedules, site notes + instructions issued by the Architect
- This material / work is protected by Copyright

**CONSULTANTS**

- TPGS Quantity Surveyors
- BBC Planning Consultant
- ACV Mechanical Engineer
- Code Performance Accessibility Consultant
- PSE Structural Engineer
- BCG BCA Consultant
- JCL Hydraulic Engineer
- Wiley Mac Fire Consultant
- MCD Fire Engineer
- LINEA Electrical Engineer
- BCG BCA Consultant
- Bowridge Williams Surveyors



**CLIENT**  
STEVEN ADAMS  
THE SCOTS COLLEGE

**PROJECT**  
MAJOR ALTERATIONS + ADDITIONS TO THE STEVENSON LIBRARY (SSD 8922)

**ADDRESS**  
29-53 Victoria Rd  
Bellevue Hill, NSW

**DRAWING TITLE**  
PROPOSED SECOND FLOOR  
PLAN

**DRAWN BY**  
JC, CF, JW, ZW

**SCALE**  
1:200 @ A3

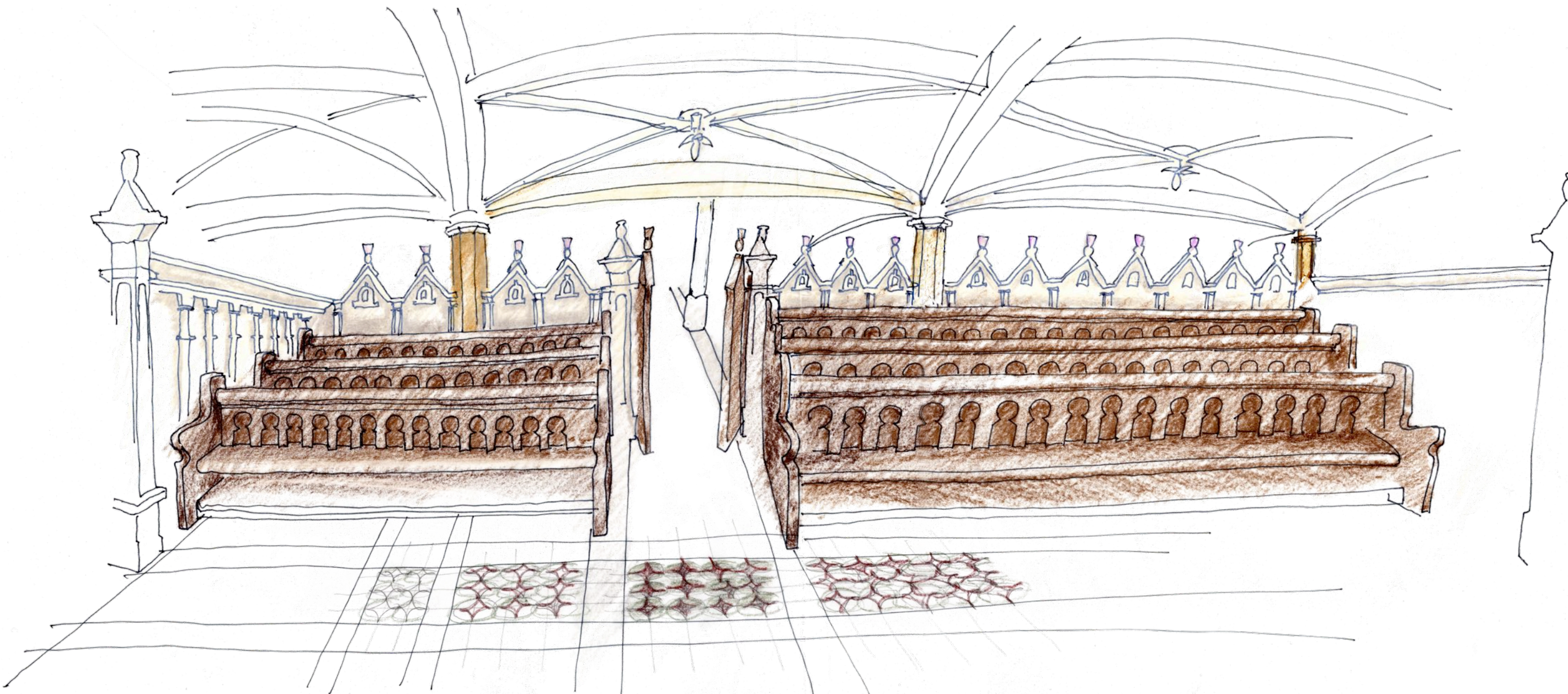
**ISSUE**  
SEARS

**REVISION**  
S1

**DATE**  
JUNE 2018

**DRAWING NUMBER**





**GENERAL NOTES**

- Consult with ALL relevant authorities prior to commencing works
- DO NOT scale. All dimensions are nominal + should be confirmed on site prior to commencement
- Obtain setting out information from architect PRIOR to commencement
- Bring discrepancies to the immediate attention of the Architect
- If unsure of any aspect of the works seek instruction from the Architect before proceeding
- All drawings must be read in conjunction with the council consent, specification, schedules, site notes + instructions issued by the Architect
- This material / work is protected by Copyright

**CONSULTANTS**

- TPGS Quantity Surveyors
- BBP Planning Consultant
- ACV Mechanical Engineer
- Code Performance Accessibility Consultant
- PBS Structural Engineer
- BCC BCA Consultant
- JCL Hydraulic Engineer
- Riley Mac Fire Consultants
- MCD Fire Engineer
- UMEA Electrical Engineer
- BCC BCA Consultant



**CLIENT**  
STEVEN ADAMS  
THE SCOTS COLLEGE

**PROJECT**  
MAJOR ALTERATIONS + ADDITIONS TO  
THE STEVENSON LIBRARY (SSD 8922)

**ADDRESS**  
29-53 Victoria Rd  
Bellevue Hill, NSW

**DRAWING TITLE**  
SECOND FLOOR THEATRETTE  
CONCEPT SKETCH

**DRAWN BY**  
JC, CF, JW, ZW

**SCALE**  
NTS

**ISSUE**  
SEAR'S

**REVISION**  
S1

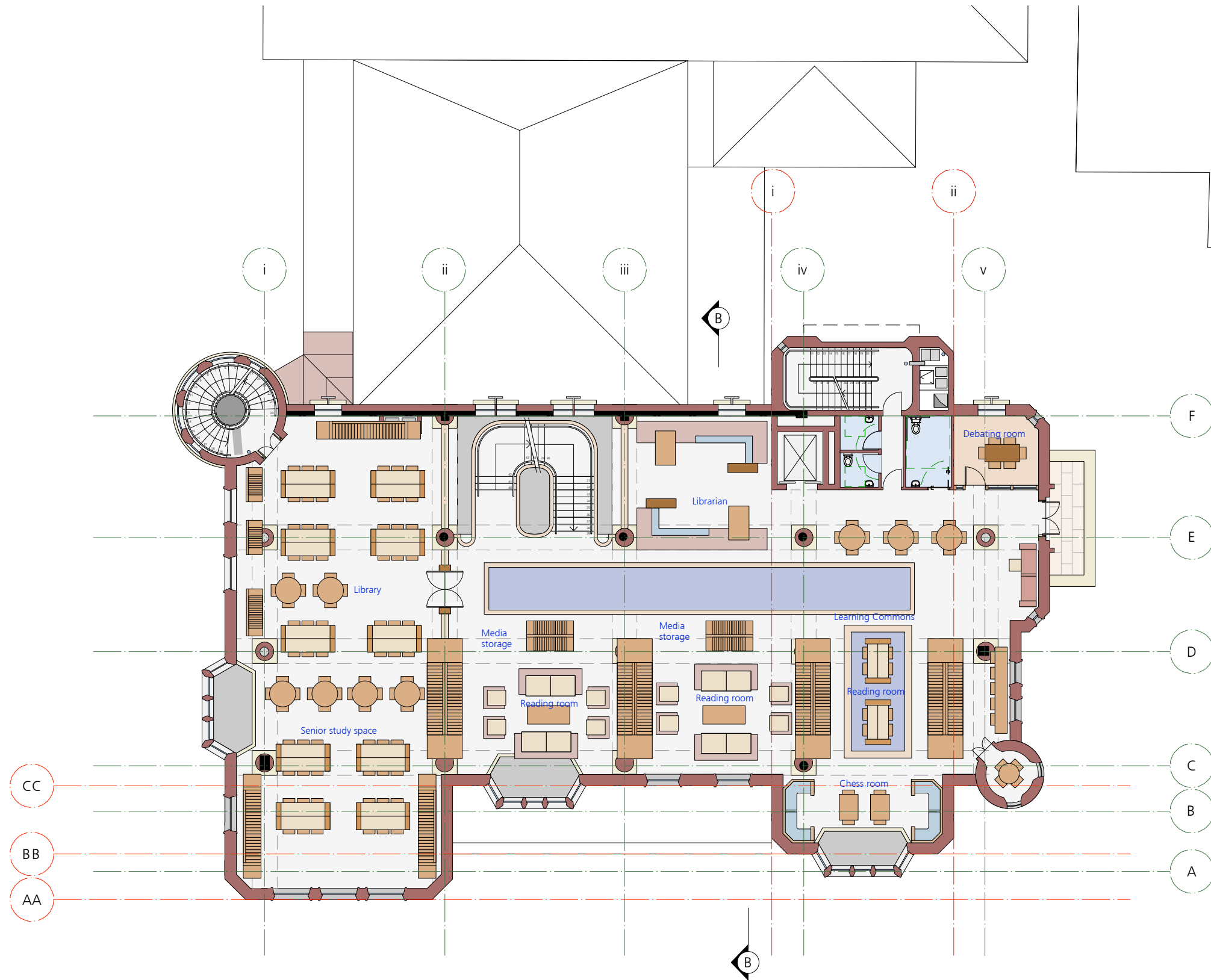
**DATE**  
MAY 2018

**DRAWING NUMBER**

SSD1.02/17-203.2

1 Second Floor Theatrette Concept Sketch





1 Proposed Third Floor Plan  
Scale: 1:200. Library + Senior Study

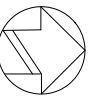
GFA: 654m<sup>2</sup>

**GENERAL NOTES**

- Consult with ALL relevant authorities prior to commencing works
- DO NOT scale. All dimensions are nominal + should be confirmed on site prior to commencement
- Obtain setting out information from architect PRIOR to commencement
- Bring discrepancies to the immediate attention of the Architect
- If unsure of any aspect of the works seek instruction from the Architect before proceeding
- All drawings must be read in conjunction with the council consent, specification, schedules, site notes + instructions issued by the Architect
- This material / work is protected by Copyright

**CONSULTANTS**

- TIGS Quantity Surveyors
- BBC Planning Consultant
- ACV Mechanical Engineer
- Code Performance Accessibility Consultant
- PSE Structural Engineer
- BCG BCA Consultant
- JCL Hydraulic Engineer
- Wiley Mac Fire Consultant
- MCD Fire Engineer
- LINEA Electrical Engineer
- BCG BCA Consultant
- Bowdidge Williams Surveyors



**CLIENT**  
STEVEN ADAMS  
THE SCOTS COLLEGE

**PROJECT**  
MAJOR ALTERATIONS + ADDITIONS TO THE STEVENSON LIBRARY (SSD 8922)

**ADDRESS**  
29-53 Victoria Rd  
Bellevue Hill, NSW

**DRAWING TITLE**  
PROPOSED THIRD FLOOR PLAN

**DRAWN BY**  
JC, CF, JW, ZW

**SCALE**  
1:200 @ A3

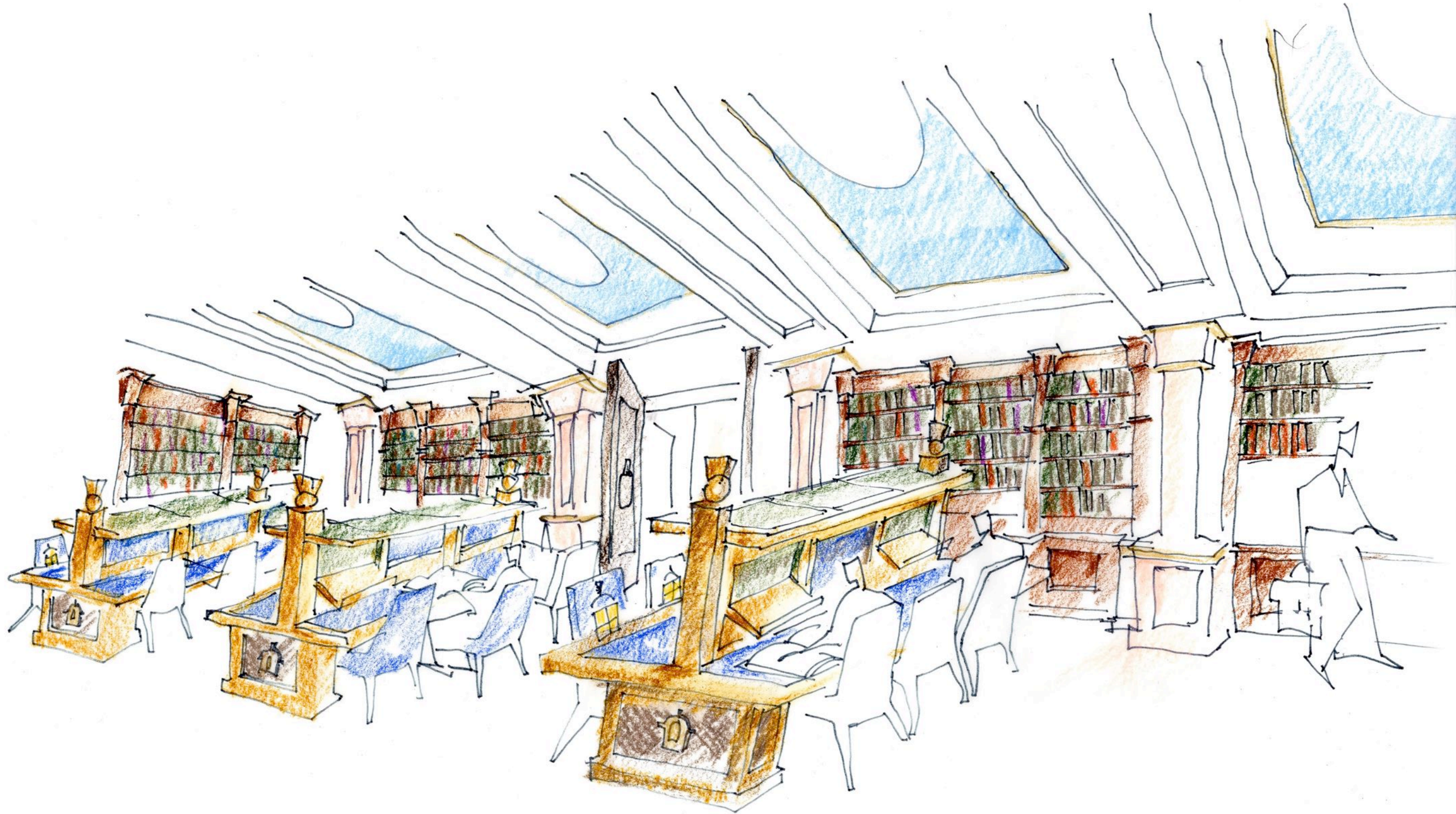
**ISSUE**  
SEARS

**REVISION**  
S1

**DATE**  
JUNE 2018

**DRAWING NUMBER**





1 Reading Room Concept Sketch

**GENERAL NOTES**

- Consult with ALL relevant authorities prior to commencing works
- DO NOT scale. All dimensions are nominal + should be confirmed on site prior to commencement
- Obtain setting out information from architect PRIOR to commencement
- Bring discrepancies to the immediate attention of the Architect
- If unsure of any aspect of the works seek instruction from the Architect before proceeding
- All drawings must be read in conjunction with the council consent, specification, schedules, site notes + instructions issued by the Architect
- This material / work is protected by Copyright

**CONSULTANTS**

- TIGS Quantity Surveyors
- BBC Planning Consultant
- ACV Mechanical Engineer
- Code Performance Accessibility Consultant
- PSE Structural Engineer
- BCG BCA Consultant
- JCL Hydraulic Engineer
- Wiley Mac Fire Consultant
- MCD Fire Engineer
- IMEA Electrical Engineer
- BCG BCA Consultant
- Davidridge Williams Surveyors



**CLIENT**  
 STEVEN ADAMS  
 THE SCOTS COLLEGE

**PROJECT**  
 MAJOR ALTERATIONS + ADDITIONS TO  
 THE STEVENSON LIBRARY (SSD 8922)

**ADDRESS**  
 29-53 Victoria Rd  
 Bellevue Hill, NSW

**DRAWING TITLE**  
 PROPOSED READING  
 ROOM CONCEPT

**DRAWN BY**  
 JC, CF, JW, ZW

**SCALE**  
 NTS

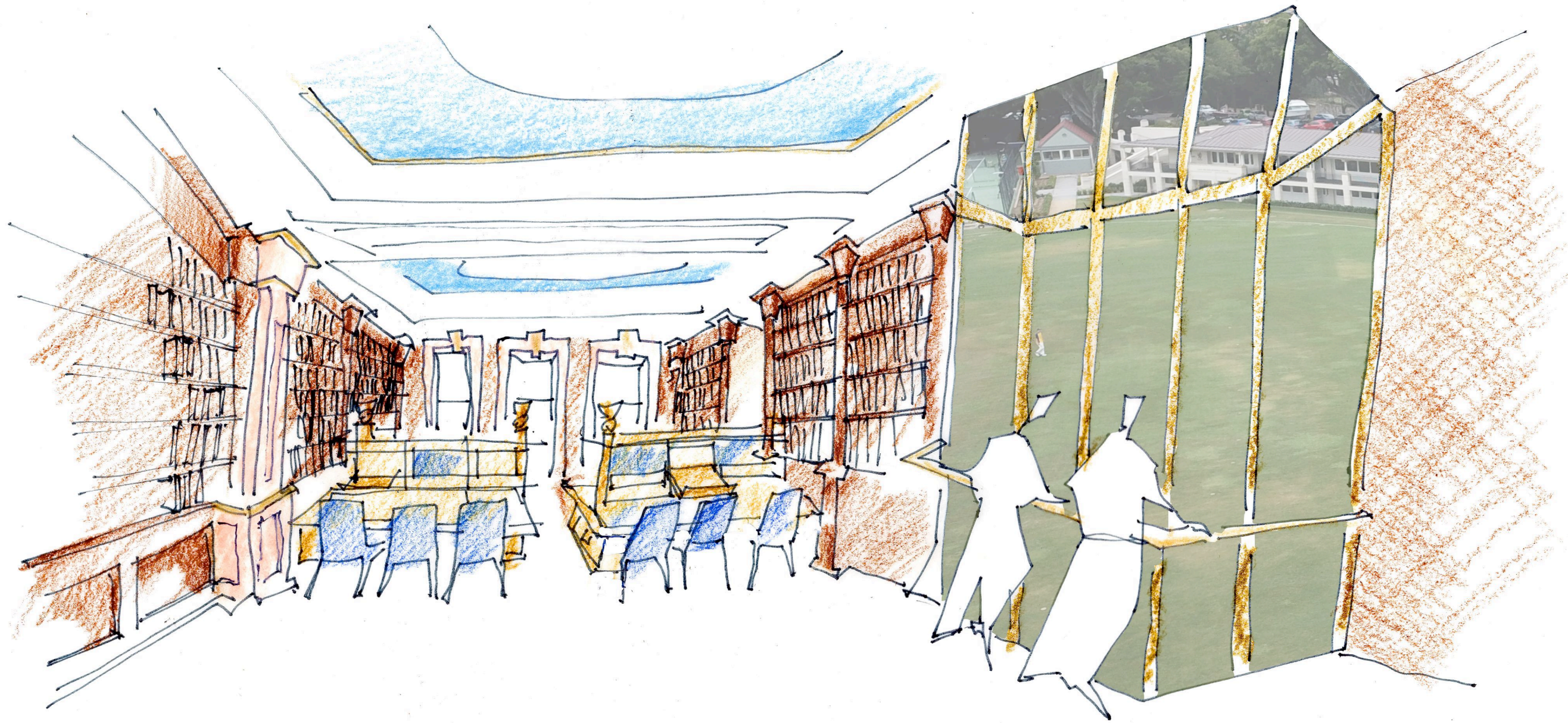
**ISSUE**  
 SEARS

**REVISION**  
 S1

**DATE**  
 JUNE 2018

**DRAWING NUMBER**  
 SSD1.02/17-204.2





1 Senior Study Space Concept Sketch

**GENERAL NOTES**

- Consult with ALL relevant authorities prior to commencing works
- DO NOT scale. All dimensions are nominal + should be confirmed on site prior to commencement
- Obtain setting out information from architect PRIOR to commencement
- Bring discrepancies to the immediate attention of the Architect
- If unsure of any aspect of the works seek instruction from the Architect before proceeding
- All drawings must be read in conjunction with the council consent, specification, schedules, site notes + instructions issued by the Architect
- This material / work is protected by Copyright

**CONSULTANTS**

- TPGS  
Quantity Surveyors
- BSC  
Planning Consultant
- ACT  
Mechanical Engineer
- Code Performance  
Accessibility Consultant
- PBS  
Structural Engineer
- BCC  
BCA Consultant
- JCA  
Hydraulic Engineer
- Riley Mac  
Fire Consultants
- MCD  
Fire Engineer
- UMEA  
Electrical Engineer
- BCC  
BCA Consultant



**CLIENT**  
 STEVEN ADAMS  
 THE SCOTS COLLEGE

**PROJECT**  
 MAJOR ALTERATIONS + ADDITIONS TO  
 THE STEVENSON LIBRARY (SSD 8922)

**ADDRESS**  
 29-53 Victoria Rd  
 Bellevue Hill, NSW

**DRAWING TITLE**  
 PROPOSED SENIOR STUDY  
 SPACE CONCEPT

**DRAWN BY**  
 JC, CF, JW, ZW

**SCALE**  
 NTS

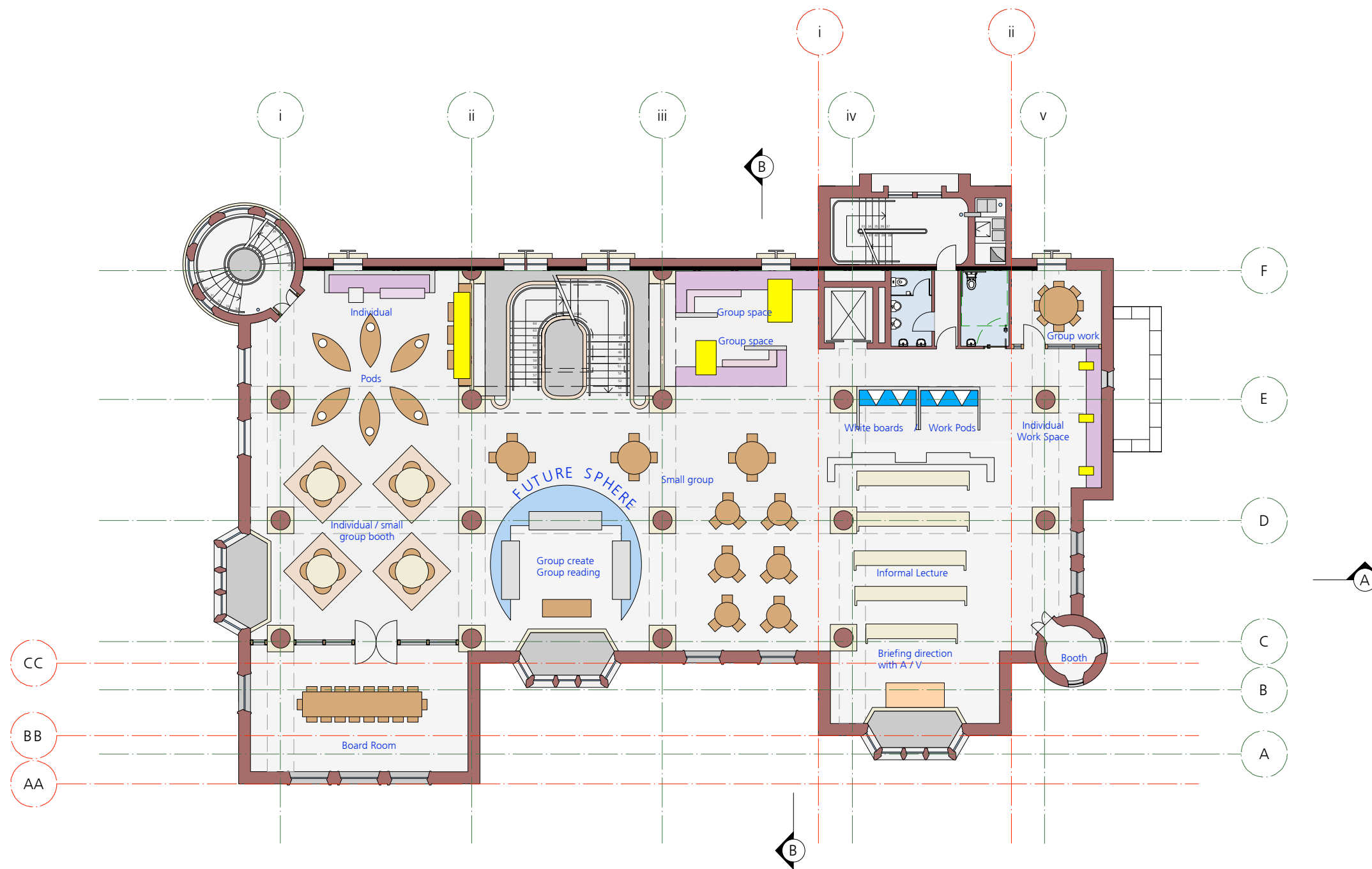
**ISSUE**  
 SEAR'S

**REVISION**  
 S1

**DATE**  
 MAY 2018

**DRAWING NUMBER**



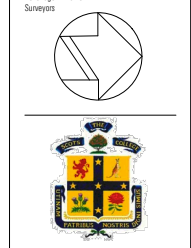


1 Proposed Fourth Floor Plan  
 Scale: 1:200. Centre for Active + Professional Learning

GFA: 655m<sup>2</sup>

**GENERAL NOTES**  
 - Consult with ALL relevant authorities prior to commencing works  
 - DO NOT scale. All dimensions are nominal + should be confirmed on site prior to commencement  
 - Obtain setting out information from architect PRIOR to commencement  
 - Bring discrepancies to the immediate attention of the Architect  
 - If unsure of any aspect of the works seek instruction from the Architect before proceeding  
 - All drawings must be read in conjunction with the council consent, specification, schedules, site notes + instructions issued by the Architect  
 - This material / work is protected by Copyright

**CONSULTANTS**  
 TPCS Quantity Surveyors  
 BPC Planning Consultant  
 ACV Mechanical Engineer  
 Coda Performance Accessibility Consultant  
 PSE Structural Engineer  
 BCS BCA Consultant  
 JCL Hydraulic Engineer  
 Wiley Mac Fire Consultant  
 MCD Fire Engineer  
 LIMEA Electrical Engineer  
 BCS BCA Consultant  
 Beswidge Williams Surveyors



**CLIENT**  
 STEVEN ADAMS  
 THE SCOTS COLLEGE

**PROJECT**  
 MAJOR ALTERATIONS + ADDITIONS TO THE STEVENSON LIBRARY (SSD 8922)

**ADDRESS**  
 29-53 Victoria Rd  
 Bellevue Hill, NSW

**DRAWING TITLE**  
 PROPOSED FOURTH FLOOR PLAN

**DRAWN BY**  
 JC, CF, JW, ZW

**SCALE**  
 1:200 @ A3

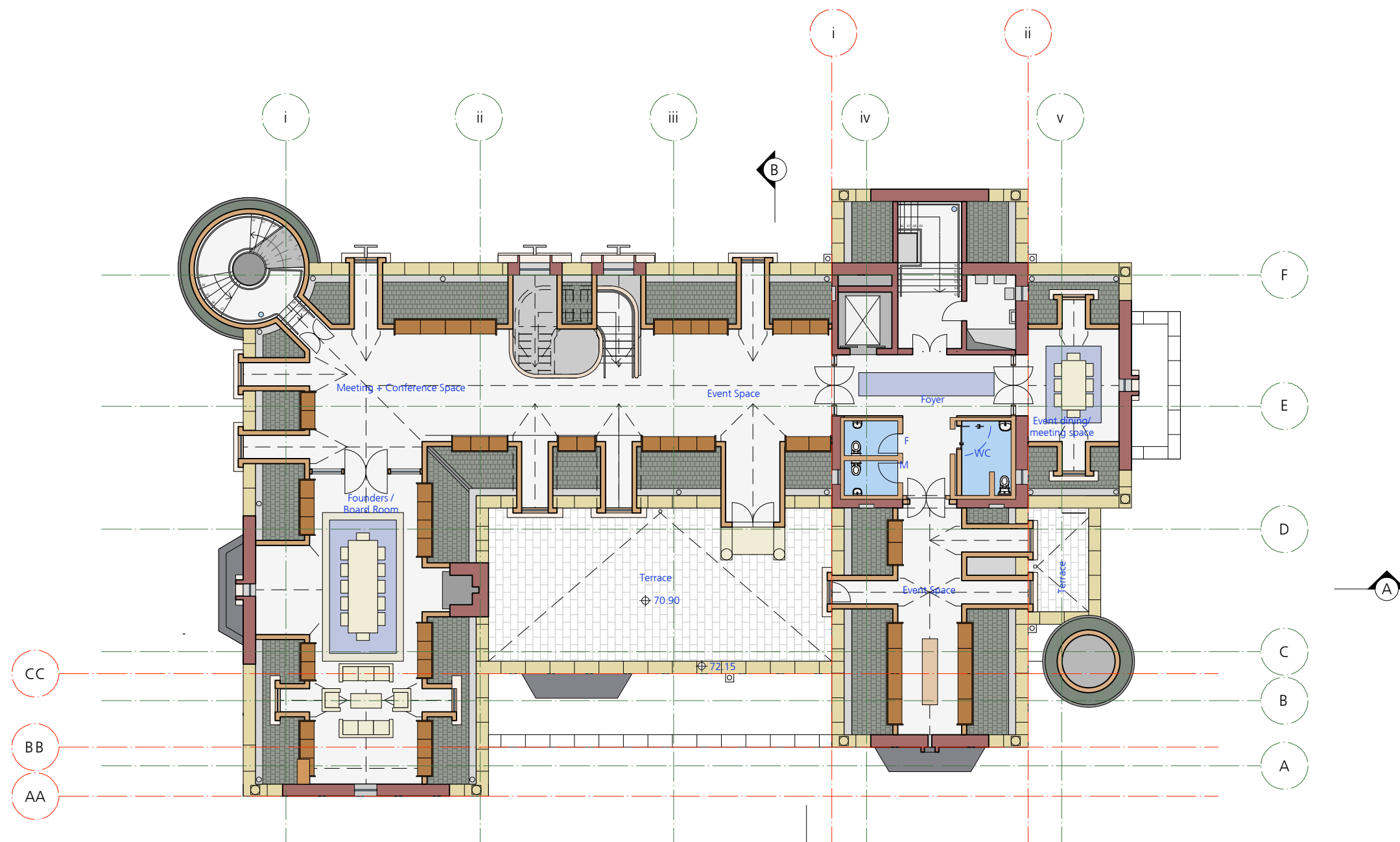
**ISSUE**  
 SEARS

**REVISION**  
 S1

**DATE**  
 JUNE 2018

**DRAWING NUMBER**





1 Proposed Fifth Floor Plan  
 Scale: 1:200. Founders Room + Event Space

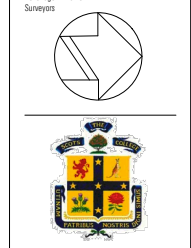
GFA: 312m<sup>2</sup>

**GENERAL NOTES**

- Consult with ALL relevant authorities prior to commencing works
- DO NOT scale. All dimensions are nominal + should be confirmed on site prior to commencement
- Obtain setting out information from architect PRIOR to commencement
- Bring discrepancies to the immediate attention of the Architect
- If unsure of any aspect of the works seek instruction from the Architect before proceeding
- All drawings must be read in conjunction with the council consent, specification, schedules, site notes + instructions issued by the Architect
- This material / work is protected by Copyright

**CONSULTANTS**

- TPGS  
Quantity Surveyors
- BBC  
Planning Consultant
- ACV  
Mechanical Engineer
- Code Performance  
Accessibility Consultant
- PSE  
Structural Engineer
- BCG  
BCA Consultant
- JCL  
Hydraulic Engineer
- Wiley Mac  
Fire Consultant
- MCD  
Fire Engineer
- UMEA  
Electrical Engineer
- BCG  
BCA Consultant
- Bowdridge Williams  
Surveyors



**CLIENT**  
 STEVEN ADAMS  
 THE SCOTS COLLEGE

**PROJECT**  
 MAJOR ALTERATIONS + ADDITIONS TO  
 THE STEVENSON LIBRARY (SSD 8922)

**ADDRESS**  
 29-53 Victoria Rd  
 Bellevue Hill, NSW

**DRAWING TITLE**  
 PROPOSED FIFTH FLOOR PLAN

**DRAWN BY**  
 JC, CF, JW, ZW

**SCALE**  
 1:200 @ A3

**ISSUE**  
 SEARS

**REVISION**  
 S1

**DATE**  
 JUNE 2018

**DRAWING NUMBER**





1 Founders Room Concept Sketch

**GENERAL NOTES**

- Consult with ALL relevant authorities prior to commencing works
- DO NOT scale. All dimensions are nominal + should be confirmed on site prior to commencement
- Obtain setting out information from architect PRIOR to commencement
- Bring discrepancies to the immediate attention of the Architect
- If unsure of any aspect of the works seek instruction from the Architect before proceeding
- All drawings must be read in conjunction with the council consent, specification, schedules, site notes + instructions issued by the Architect
- This material / work is protected by Copyright

**CONSULTANTS**

- TPO Quantity Surveyors
- BBC Planning Consultant
- ACV Mechanical Engineer
- Code Performance Accessibility Consultant
- PSE Structural Engineer
- BCG BCA Consultant
- JCL Hydraulic Engineer
- Wily Mac Fire Consultant
- MCD Fire Engineer
- IMEA Electrical Engineer
- BCG BCA Consultant
- Bowdidge Williams Surveyors



**CLIENT**  
 STEVEN ADAMS  
 THE SCOTS COLLEGE

**PROJECT**  
 MAJOR ALTERATIONS + ADDITIONS TO  
 THE STEVENSON LIBRARY (SSD 8922)

**ADDRESS**  
 29-53 Victoria Rd  
 Bellevue Hill, NSW

**DRAWING TITLE**  
 PROPOSED FOUNDERS  
 ROOM CONCEPT

**DRAWN BY**  
 JC, CF, JW, ZW

**SCALE**  
 NTS

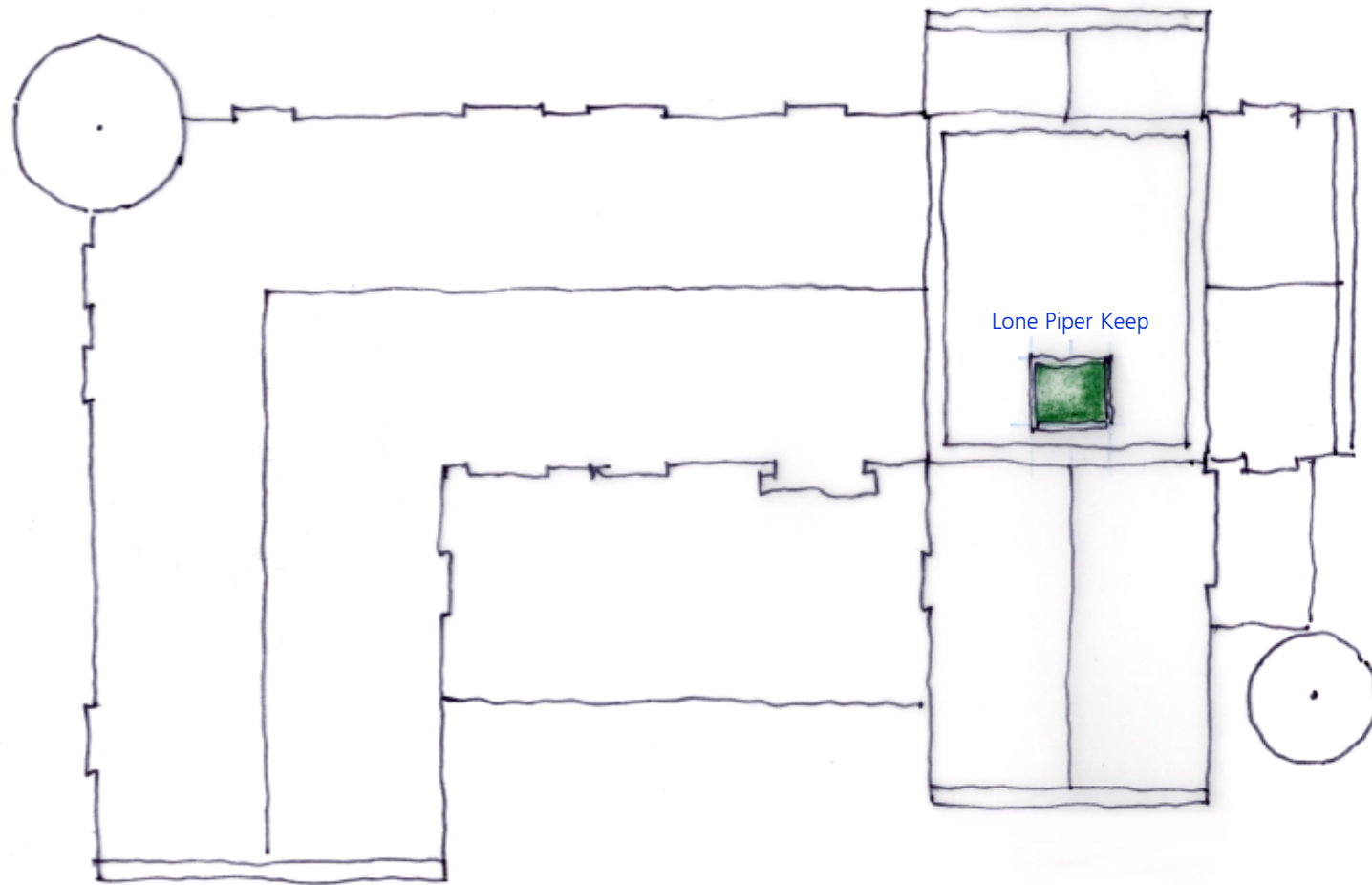
**ISSUE**  
 SEARS

**REVISION**  
 S1

**DATE**  
 JUNE 2018

**DRAWING NUMBER**





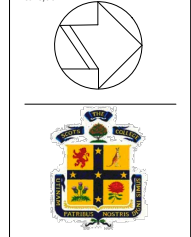
1 Proposed Roof Plan  
Scale: 1:200

**GENERAL NOTES**

- Consult with ALL relevant authorities prior to commencing works
- DO NOT scale. All dimensions are nominal + should be confirmed on site prior to commencement
- Obtain setting out information from architect PRIOR to commencement
- Bring discrepancies to the immediate attention of the Architect
- If unsure of any aspect of the works seek instruction from the Architect before proceeding
- All drawings must be read in conjunction with the council consent, specification, schedules, site notes + instructions issued by the Architect
- This material / work is protected by Copyright

**CONSULTANTS**

TICS  
 Quantity Surveyors  
 BPC  
 Planning Consultant  
 ACV  
 Mechanical Engineer  
 Code Performance  
 Accessibility Consultant  
 PSE  
 Structural Engineer  
 BCS  
 BCA Consultant  
 JCL  
 Hydraulic Engineer  
 Wiley Mac  
 Fire Consultant  
 MCD  
 Fire Engineer  
 LIMEA  
 Electrical Engineer  
 BCS  
 BCA Consultant  
 Beveridge Williams  
 Surveyors



**CLIENT**  
STEVEN ADAMS  
THE SCOTS COLLEGE

**PROJECT**  
MAJOR ALTERATIONS + ADDITIONS TO  
THE STEVENSON LIBRARY (SSD 8922)

**ADDRESS**  
29-53 Victoria Rd  
Bellevue Hill, NSW

**DRAWING TITLE**  
PROPOSED ROOF PLAN

**DRAWN BY**  
JC, CF, JW, ZW

**SCALE**  
1:200 @ A3

**ISSUE**  
SEARS

**REVISION**  
S1

**DATE**  
JUNE 2018

**DRAWING NUMBER**