

Original photograph



Original photo with wireframe overlay of surveyed elements



Photomontage of indicative building massing



Photograph details

Photo Date	25th October 2017
Camera Used	Nikon D800
Camera Lens	14.0-24.0 mm f/2.8
Focal length in 35mm Film	18mm



50mm crop of original photograph



Photograph details

Photo Date	25th October 2017
Camera Used	Nikon D800
Camera Lens	14.0-24.0 mm f/2.8
Focal length in 35mm Film	50mm

50mm crop of photomontage of indicative building massing

























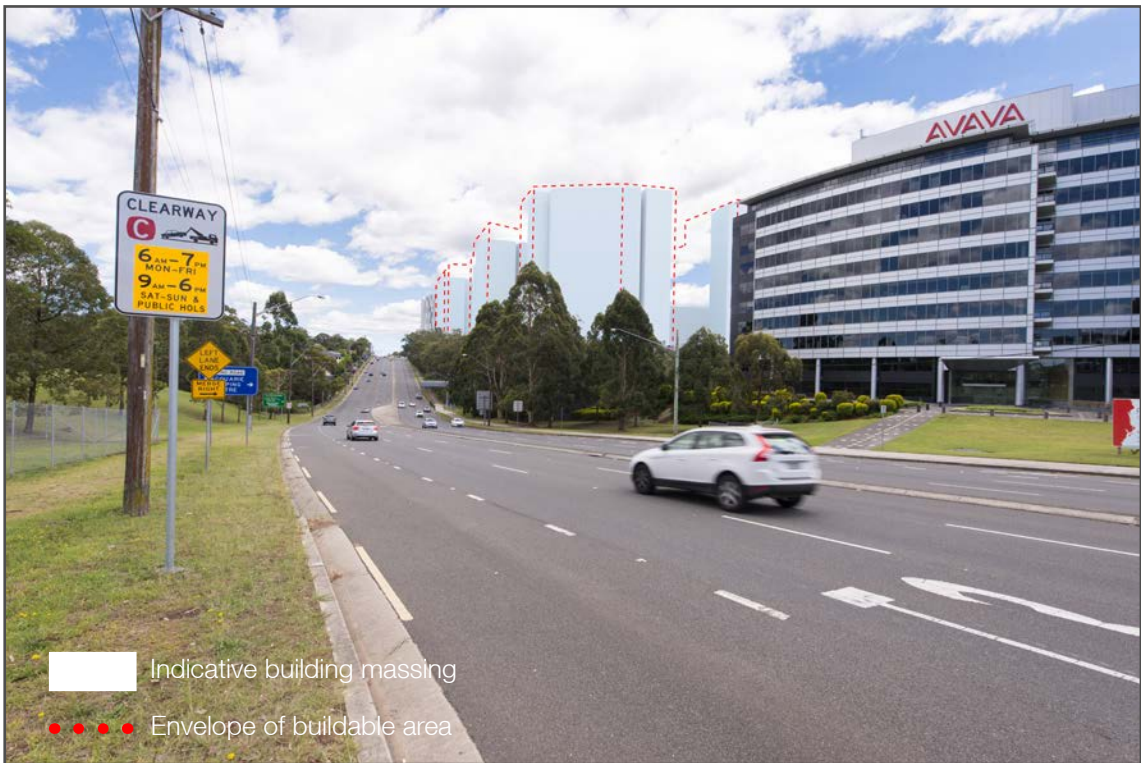
Original photograph



Original photo with wireframe overlay of surveyed elements



Photomontage of indicative building massing



Photograph details

Photo Date	24th October 2017
Camera Used	Nikon D800
Camera Lens	14.0-24.0 mm f/2.8
Focal length in 35mm Film	18mm



50mm crop of original photograph



Photograph details

Photo Date	24th October 2017
Camera Used	Nikon D800
Camera Lens	14.0-24.0 mm f/2.8
Focal length in 35mm Film	50mm

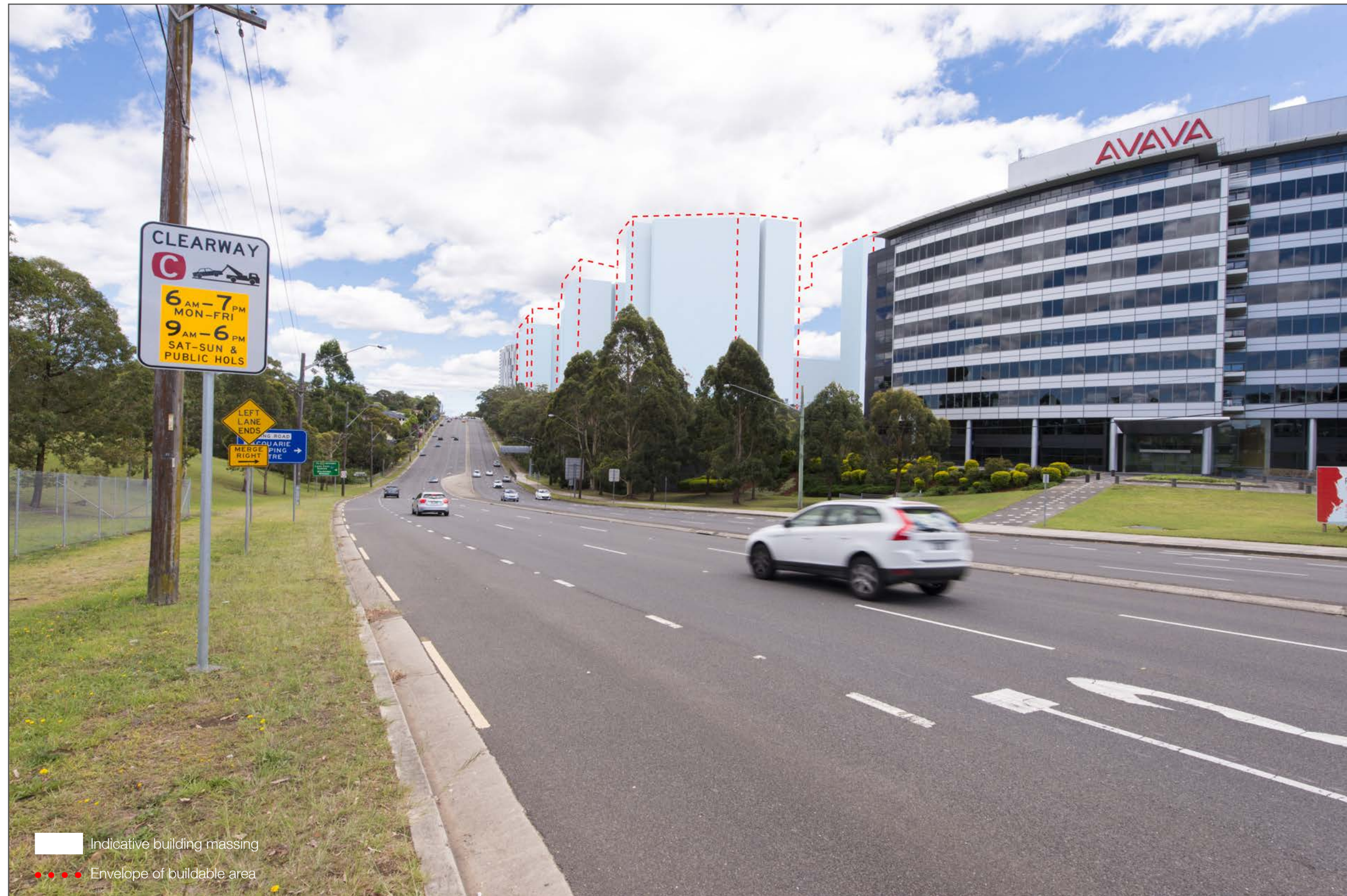
50mm crop of photomontage of indicative building massing

























Original photograph



Original photo with wireframe overlay of surveyed elements



Photomontage of indicative building massing



Photograph details

Photo Date	24th October 2017
Camera Used	Nikon D800
Camera Lens	14.0-24.0 mm f/2.8
Focal length in 35mm Film	18mm



50mm crop of original photograph



Photograph details

Photo Date	24th October 2017
Camera Used	Nikon D800
Camera Lens	14.0-24.0 mm f/2.8
Focal length in 35mm Film	50mm

50mm crop of photomontage of indicative building massing

















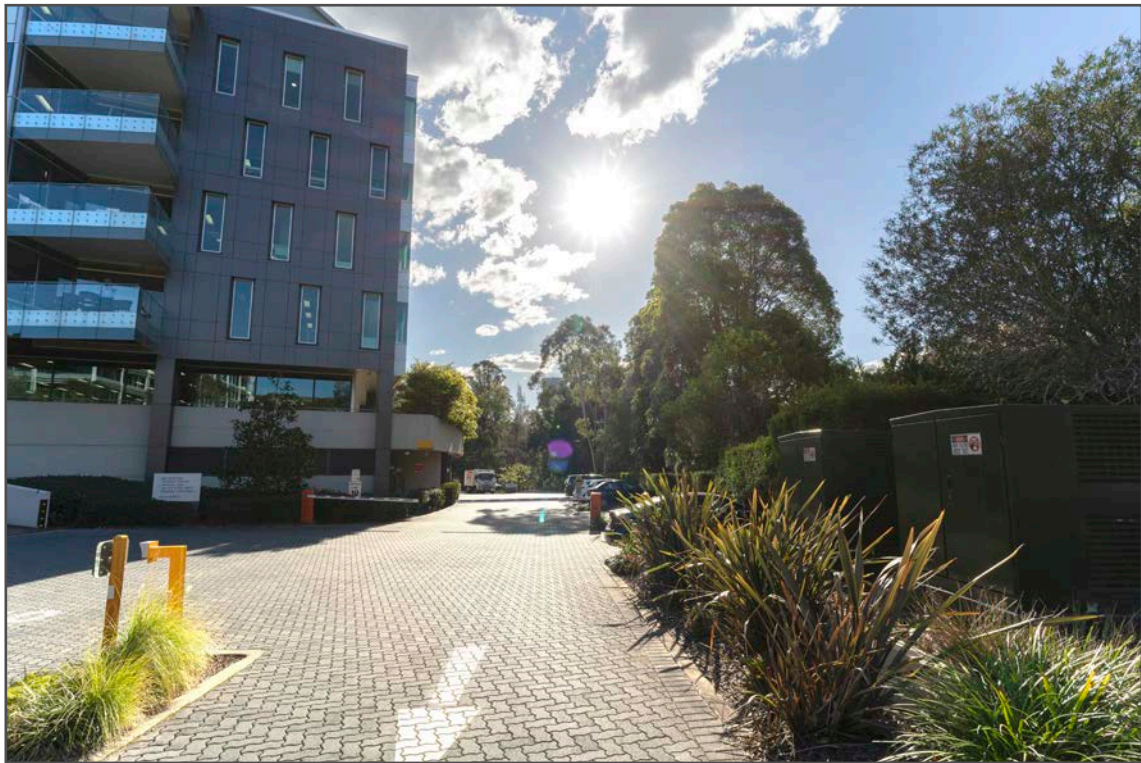




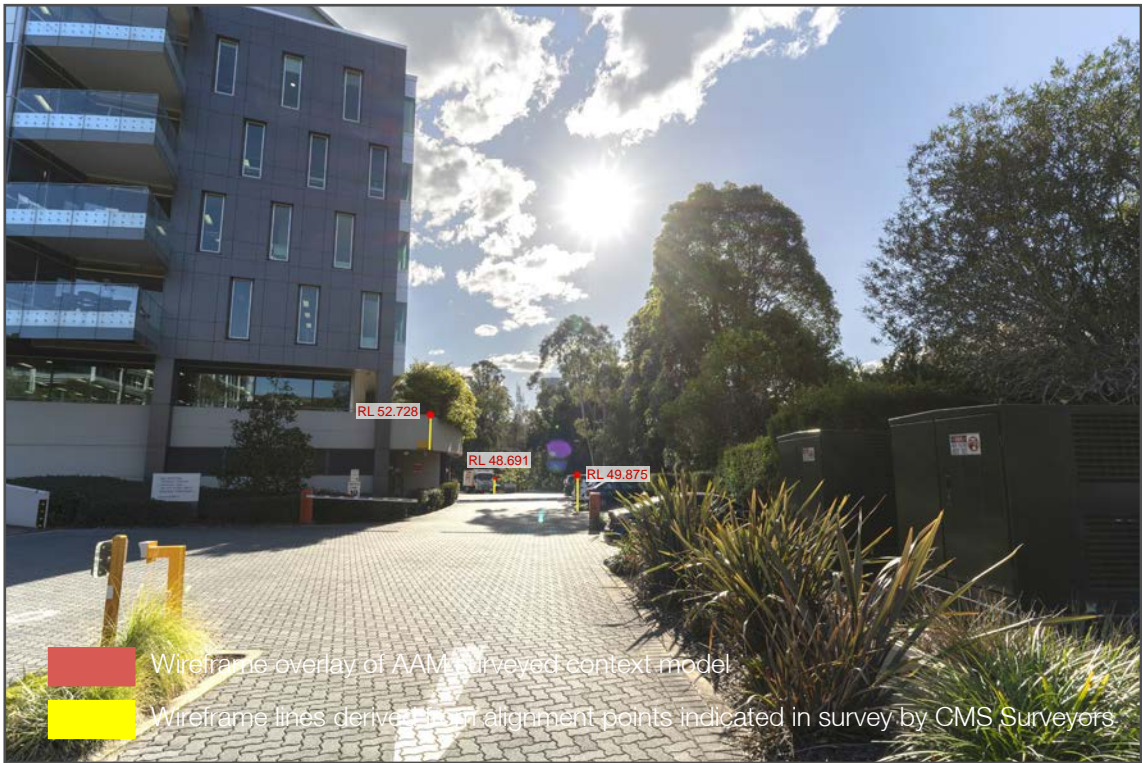




Original photograph



Original photo with wireframe overlay of surveyed elements



Photomontage of indicative building massing



Photograph details

Photo Date	1st August 2018
Camera Used	Sony A7iii
Camera Lens	Zeiss Batis f2.8 18mm
Focal length in 35mm Film	18mm



50mm crop of original photograph



Photograph details

Photo Date	1st August 2018
Camera Used	Sony A7iii
Camera Lens	Zeiss Batis f2.8 18mm
Focal length in 35mm Film	18mm - cropped to 50mm

50mm crop of photomontage of indicative building massing

