

DRAWING LIST

DRAWING NUMBER	DRAWING NAME	SCALE @ A3
2-319-277062-DA- 000	LOCATION PLAN & DRAWING LIST	1:5000
2-319-277062-DA- 001	MASTERPLAN	1:2500
2-319-277062-DA- 002	SITE PLAN	1:1000
2-319-277062-DA- 110	OFFICE FLOOR PLANS	1:200
2-319-277062-DA- 111	WAREHOUSE OFFICE FLOOR PLAN	1:200
2-319-277062-DA- 150	ROOF PLAN	1:500
2-319-277062-DA- 200	ELEVATIONS - OVERALL	1:500
2-319-277062-DA- 201	ELEVATIONS - OFFICE	1:200
2-319-277062-DA- 300	SECTIONS	1:500

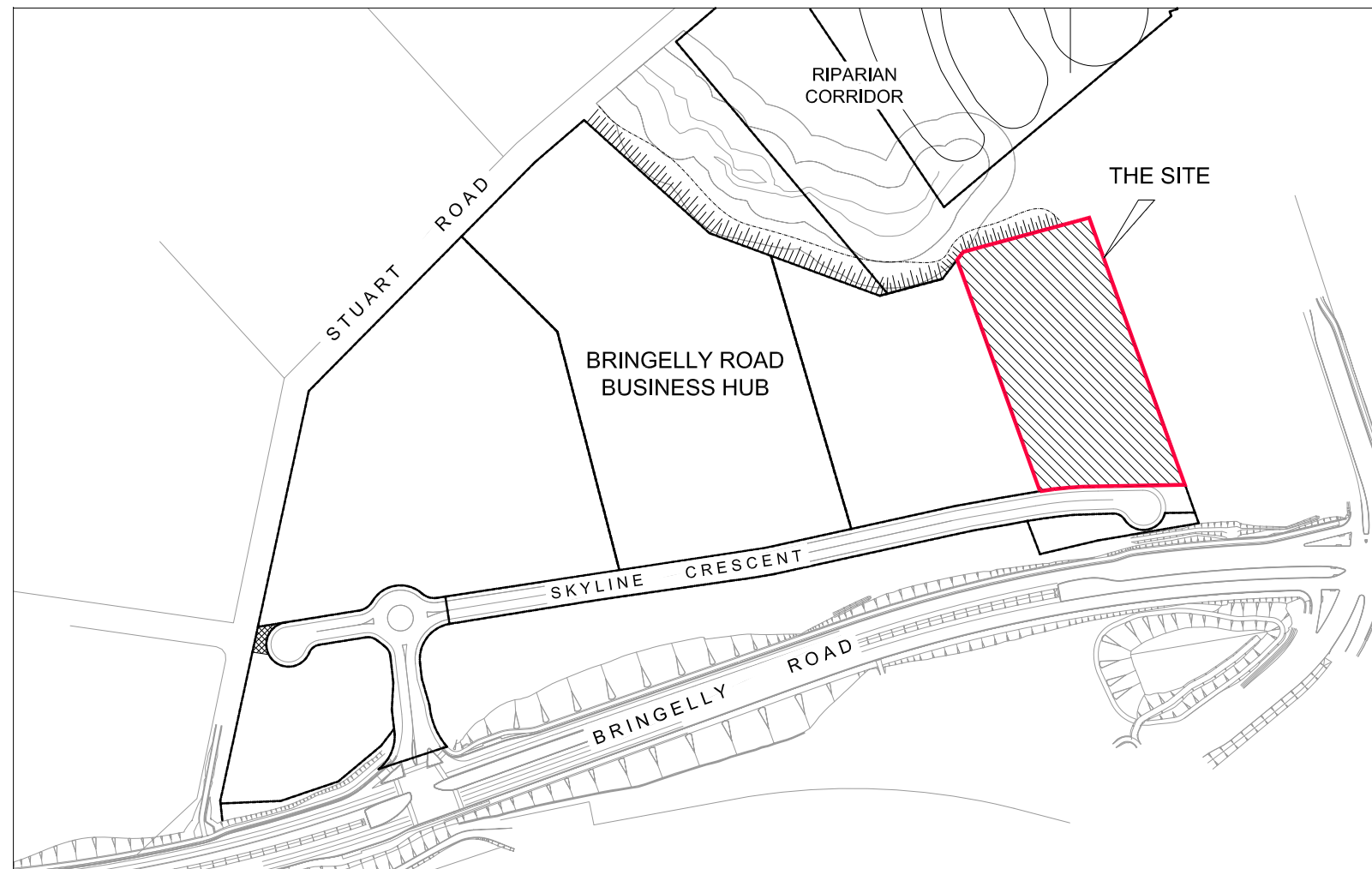


PERSPECTIVE (SKYLINE CRESCENT) ARTIST IMPRESSION ONLY - REFER TO DWG. 200 FOR BUILDING ELEVATIONS

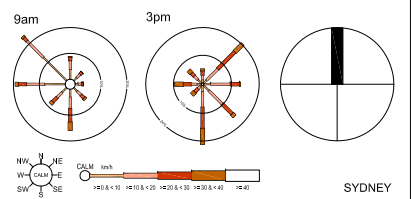
© COMMERCIAL & INDUSTRIAL PROPERTY PTY LTD, THIS DRAWING IS COPYRIGHT, APART FROM PERMITTED DEALINGS UNDER THE COPYRIGHT ACT, THIS DRAWING MAY NOT BE REPRODUCED BY ANY PERSON WITHOUT PERMISSION IN WRITING, ALL AREAS AND DIMENSIONS SHOWN ON DRAWINGS ARE APPROXIMATE ONLY AND ARE SUBJECT TO CONFIRMATION BY SURVEY

REVISIONS

NO	DESCRIPTION	DATE
1	PRELIMINARY	27.11.17
A	Issued for DA	20.12.17



LOCATION PLAN (1:5000)



PROJECT
NULON MOTOR OILS
 BRINGELLY ROAD
 BUSINESS HUB, NSW

DRAWING TITLE
 LOCATION PLAN & DRAWING LIST



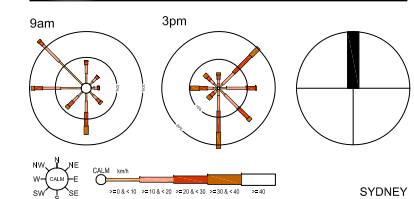
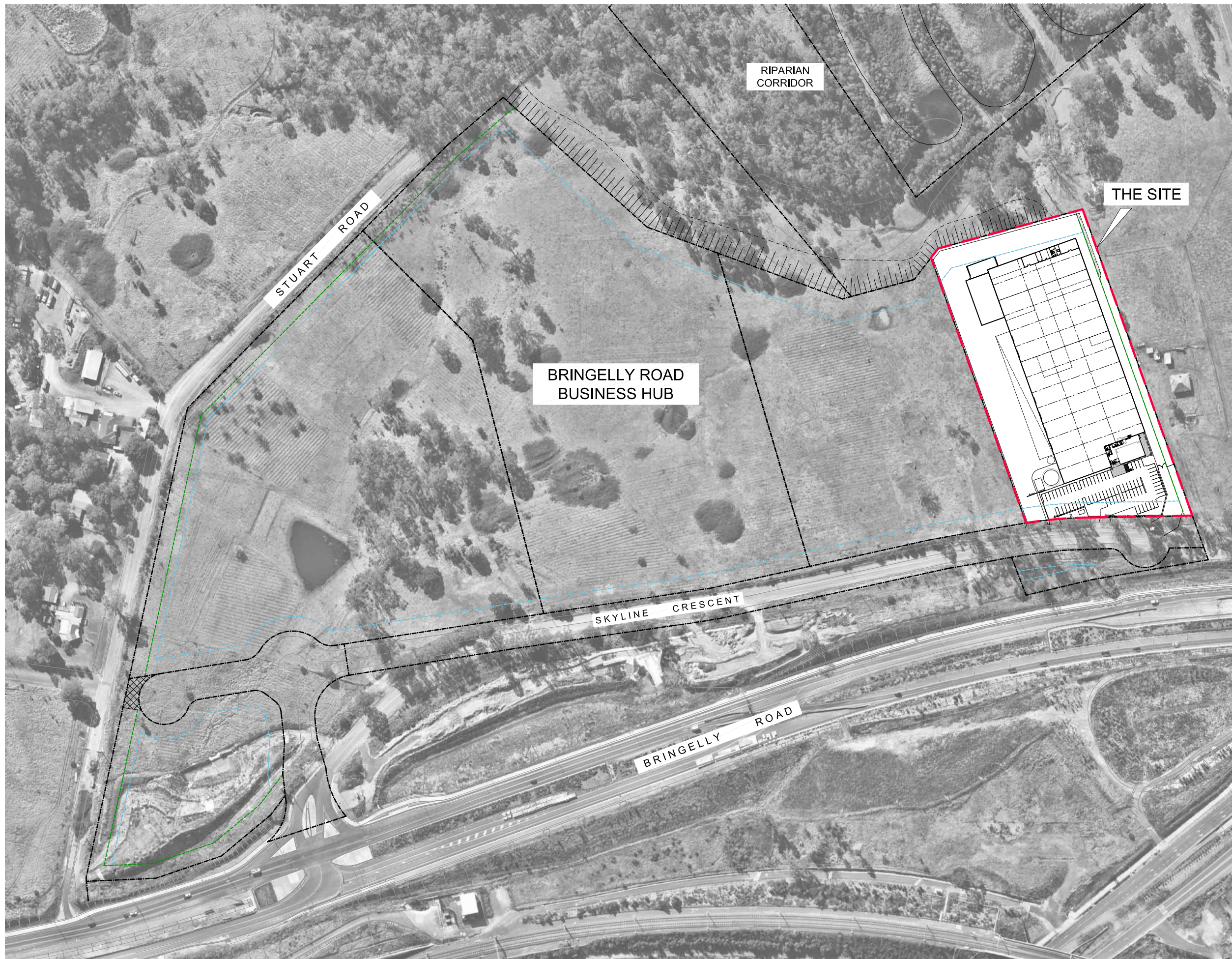
CREATE DATE : 08.12.2017 PLOT DATE : 20.12.2017
 LAST SAVED BY: mchung

2-319-277062-DA -000 **A**

© COMMERCIAL & INDUSTRIAL PROPERTY PTY LTD. THIS DRAWING IS COPYRIGHT. PART FROM PERMITTED DEALINGS UNDER THE COPYRIGHT ACT. THIS DRAWING MAY NOT BE REPRODUCED BY ANY PERSON WITHOUT PERMISSION IN WRITING. ALL AREAS AND DIMENSIONS SHOWN ON DRAWINGS ARE APPROXIMATE ONLY AND ARE SUBJECT TO CONFIRMATION BY SURVEY

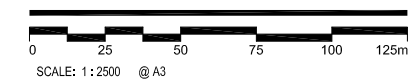
REVISIONS

1	Issued for coordination	10.11.17
2	Amended building footprint	21.11.17
3	PRELIMINARY	27.11.17
A	Issued for DA	20.12.17



PROJECT
NULON MOTOR OILS
 BRINGELLY ROAD
 BUSINESS HUB, NSW

DRAWING TITLE
MASTERPLAN



CREATE DATE : 08.12.2017 PLOT DATE : 20.12.2017
 LAST SAVED BY: mchung

2-319-277062-DA -001 **A**

REVISIONS

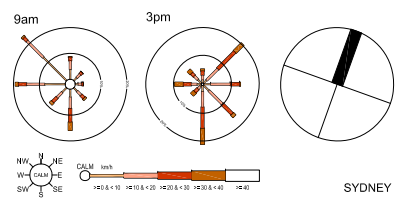
1	Issued for coordination	10.11.17
2	Amended building footprint	21.11.17
3	PRELIMINARY	27.11.17
4	Amended tanker unloading area	14.12.17
A	Issued for DA	20.12.17



LOCATION PLAN

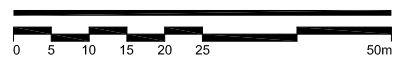
NULON MOTOR OILS

SITE AREA	21,967 sqm
WAREHOUSE (INCLUDING OFFICE/LAB/MAINT./WC)	9,210 sqm
BULK STORAGE	521 sqm
TANKER UNLOADING AREA	165 sqm
OFFICE (2 LEVELS)	800 sqm
TOTAL BUILDING AREA	10,696 sqm
EFFICIENCY	48.69 %
AWNING (10m)	880 sqm
CARPARKING PROVIDED	70 spaces
HEAVY DUTY PAVEMENT (H)	7,317 sqm
LIGHT DUTY PAVEMENT (L)	1,796 sqm



PROJECT
NULON MOTOR OILS
 BRINGELLY ROAD
 BUSINESS HUB, NSW

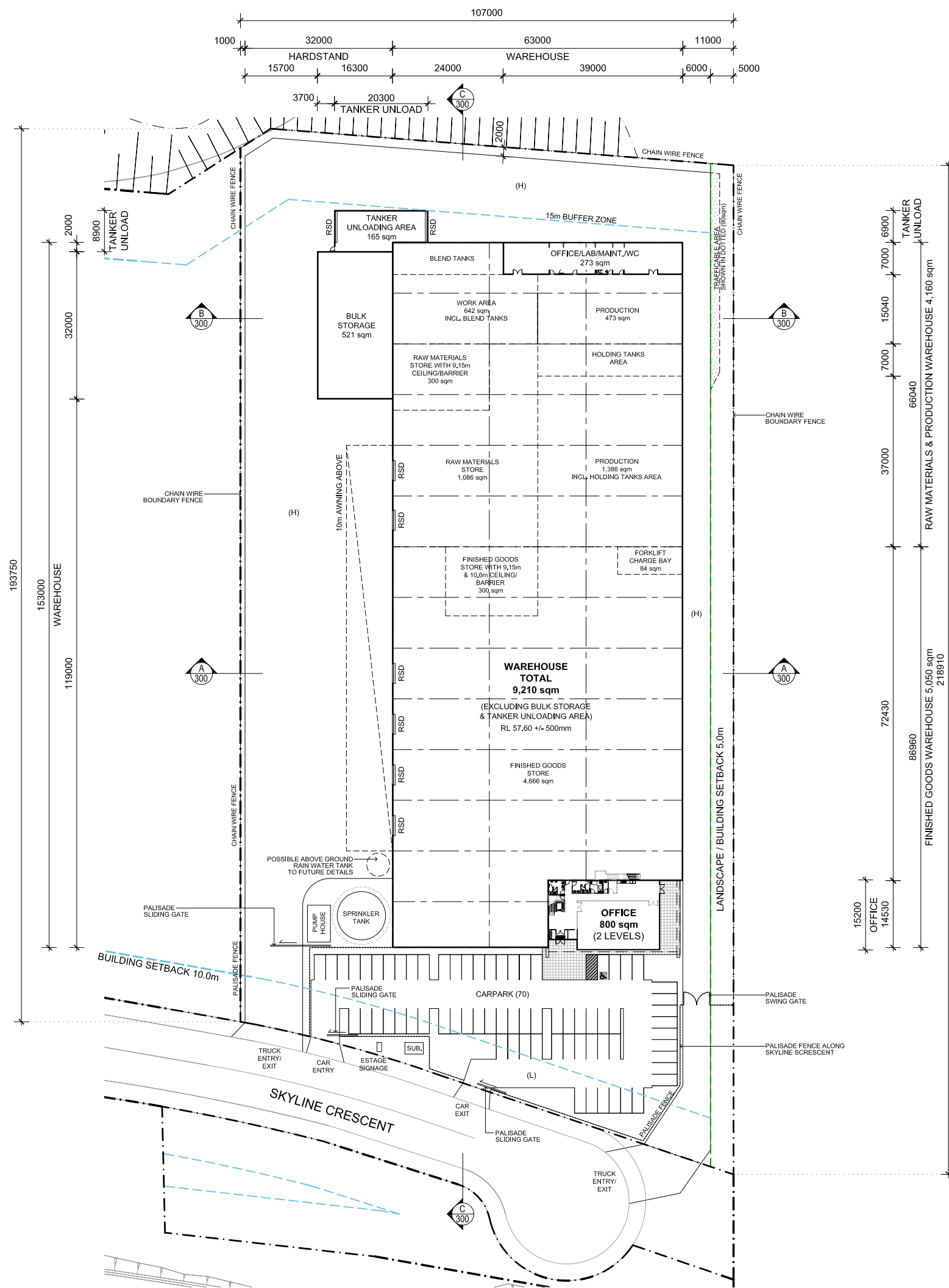
DRAWING TITLE
SITE PLAN



SCALE: 1:1000 @ A3

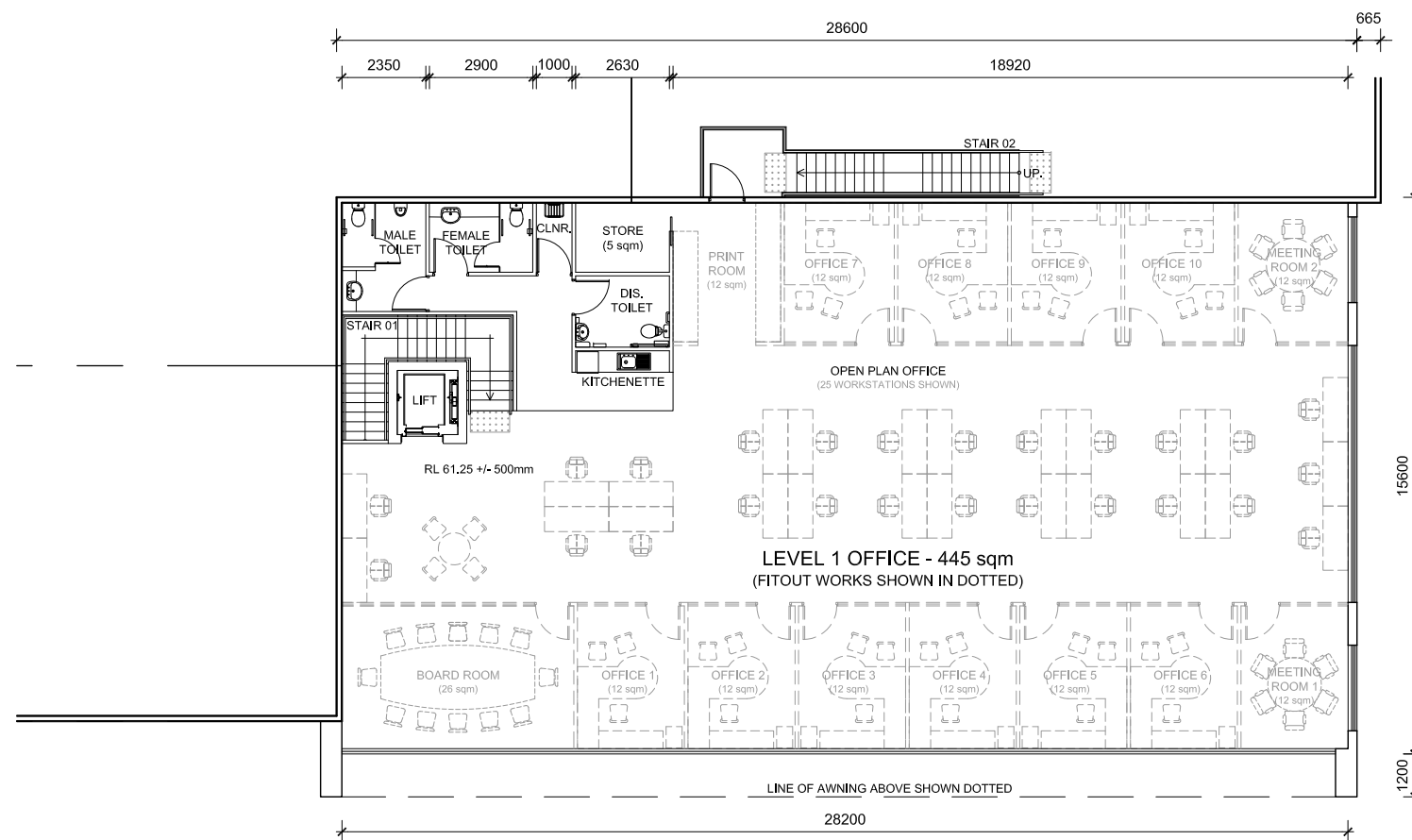
CREATE DATE: 08.12.2017 PLOT DATE: 20.12.2017

2-319-277062-DA -002 **A**

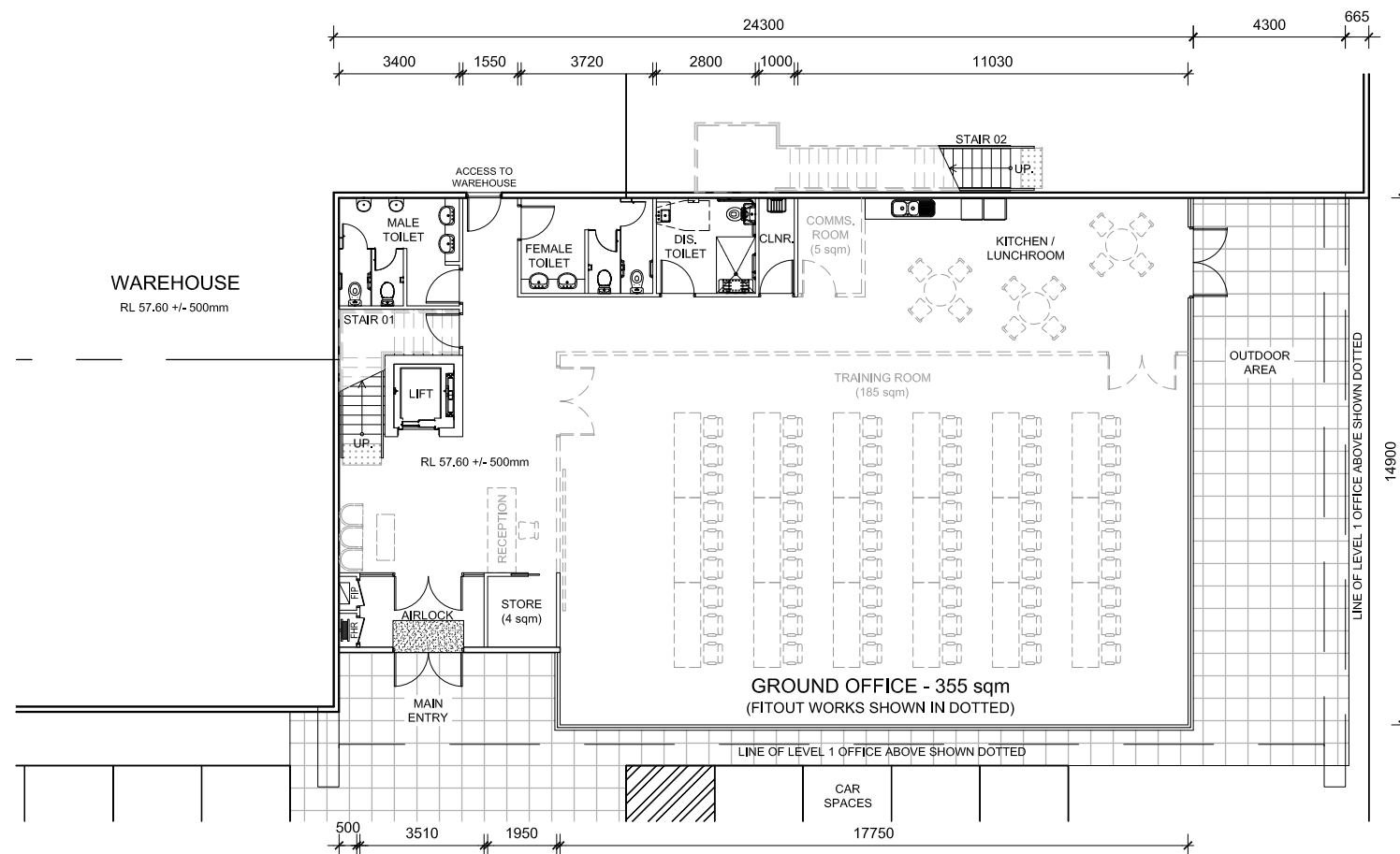


REVISIONS

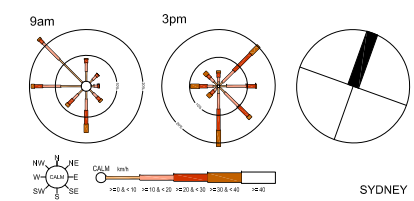
1	PRELIMINARY	27.11.17
A	Issued for DA	20.12.17



2 OFFICE- LEVEL 1 FLOOR PLAN
110 Scale 1:200

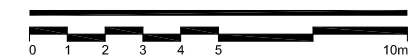


1 OFFICE- GROUND FLOOR PLAN
110 Scale 1:200



PROJECT
NULON MOTOR OILS
BRINGELLY ROAD
BUSINESS HUB, NSW

DRAWING TITLE
OFFICE FLOOR PLANS



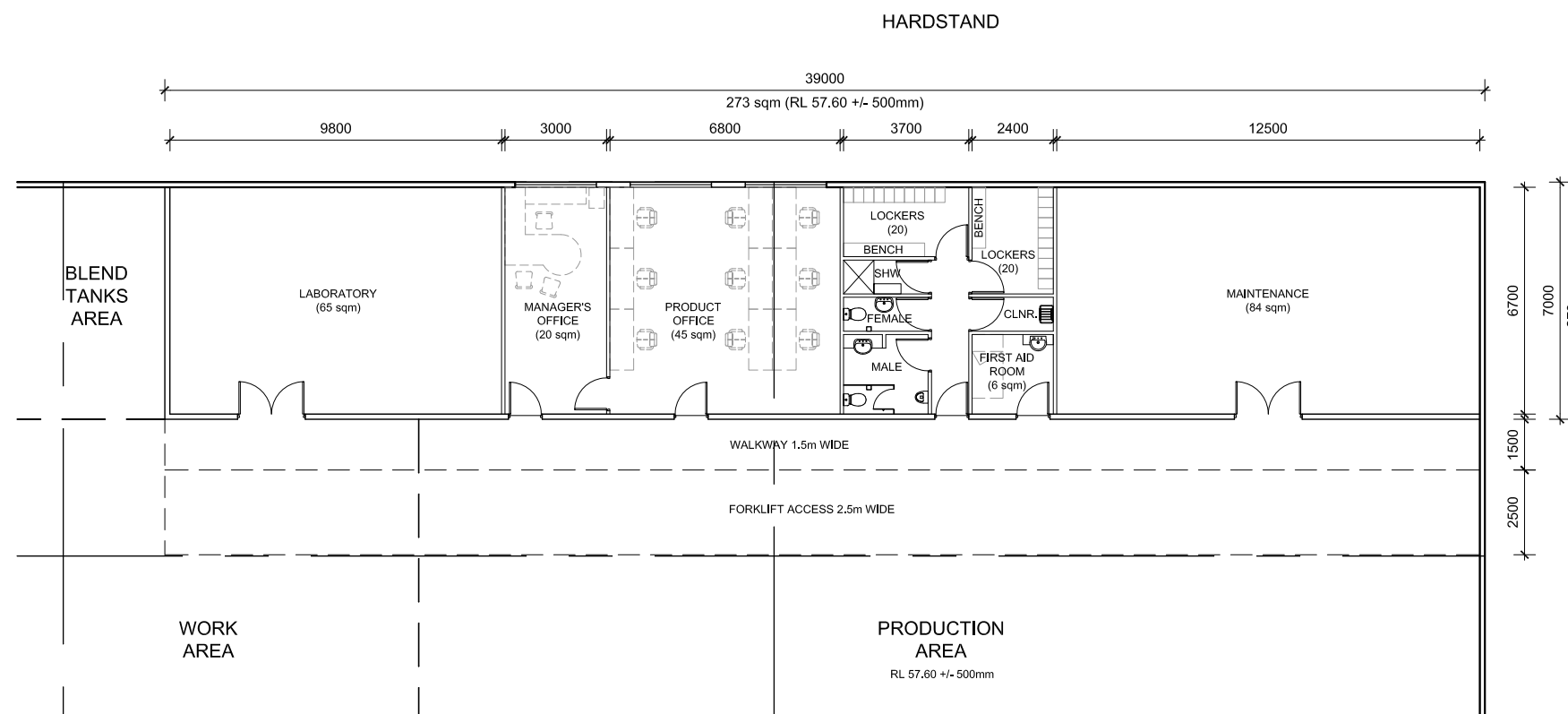
SCALE: 1:200 @ A3

CREATE DATE: 08.12.2017 PLOT DATE: 20.12.2017
LAST SAVED BY: mchung

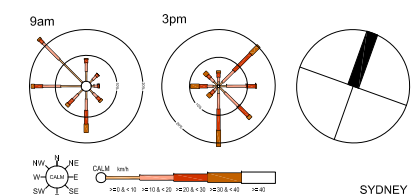
2-319-277062-DA -110 A

REVISIONS

1	PRELIMINARY	27.11.17
A	Issued for DA	20.12.17

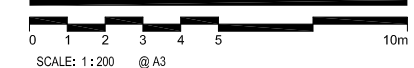


1 WAREHOUSE OFFICE- GROUND FLOOR PLAN
111 Scale 1:200



PROJECT
NULON MOTOR OILS
BRINGELLY ROAD
BUSINESS HUB, NSW

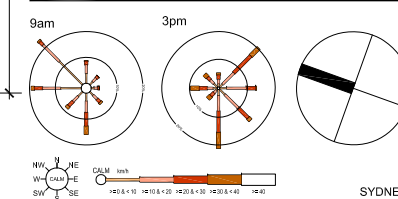
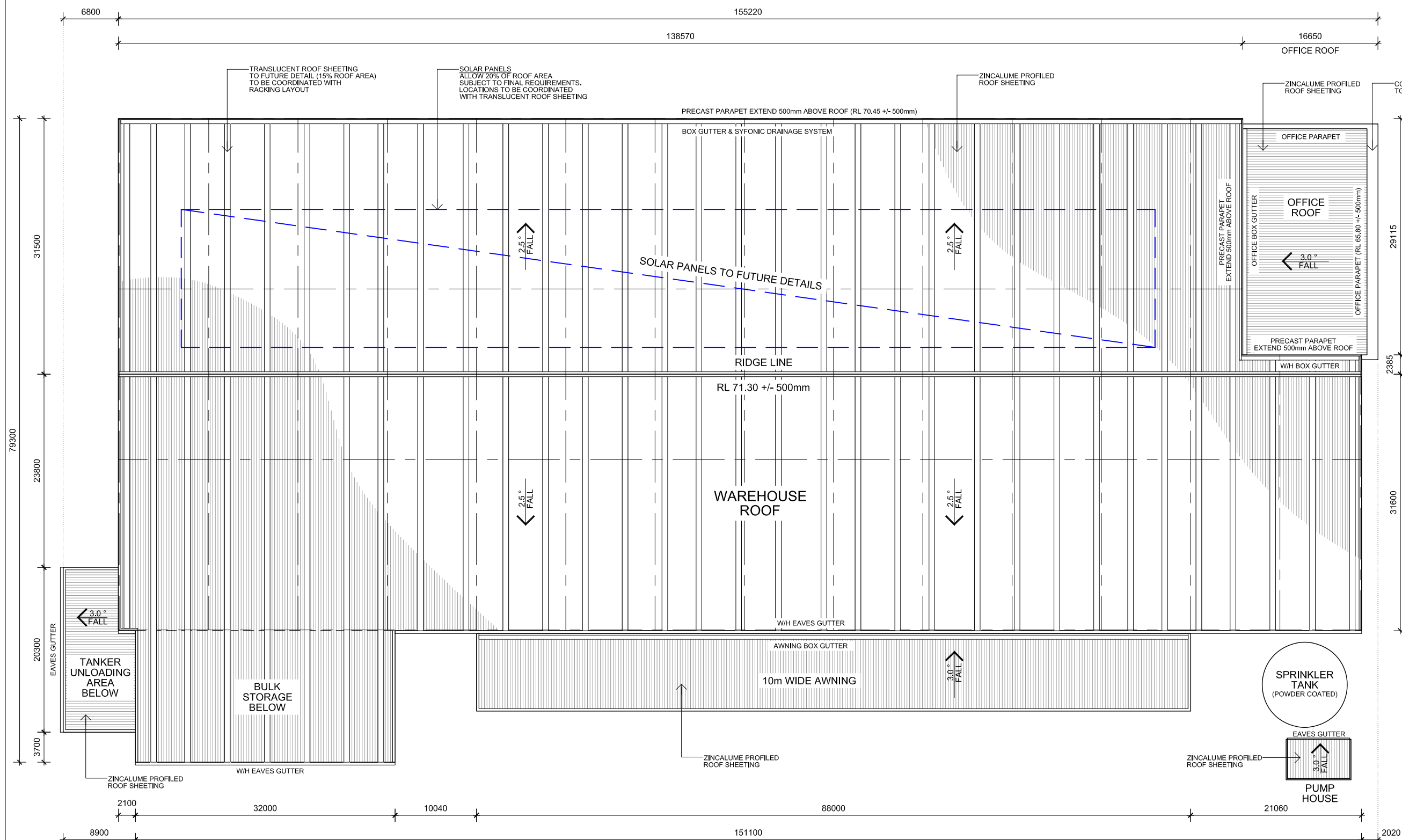
DRAWING TITLE
WAREHOUSE OFFICE FLOOR PLAN
OFFICE / LABORATORY / MAINTENANCE
& AMENITIES



SCALE: 1 : 200 @ A3

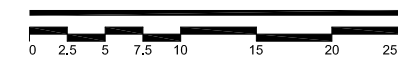
CREATE DATE : 08.12.2017 PLOT DATE : 20.12.2017
LAST SAVED BY: mchung

2-319-277062-DA -111 A



PROJECT
NULON MOTOR OILS
 BRINGELLY ROAD
 BUSINESS HUB, NSW

DRAWING TITLE
ROOF PLAN



CREATE DATE: 08.12.2017 PLOT DATE: 20.12.2017
 LAST SAVED BY: mchung

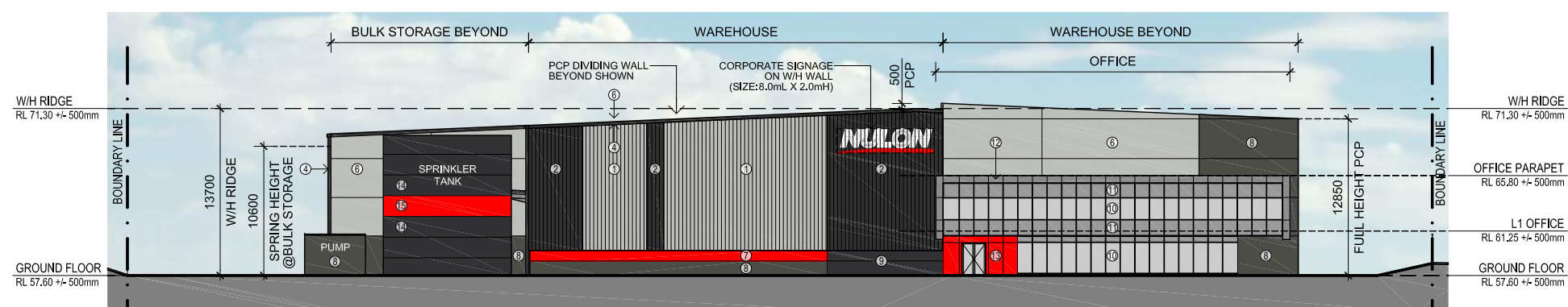
2-319-277062-DA -150 **A**

REVISIONS

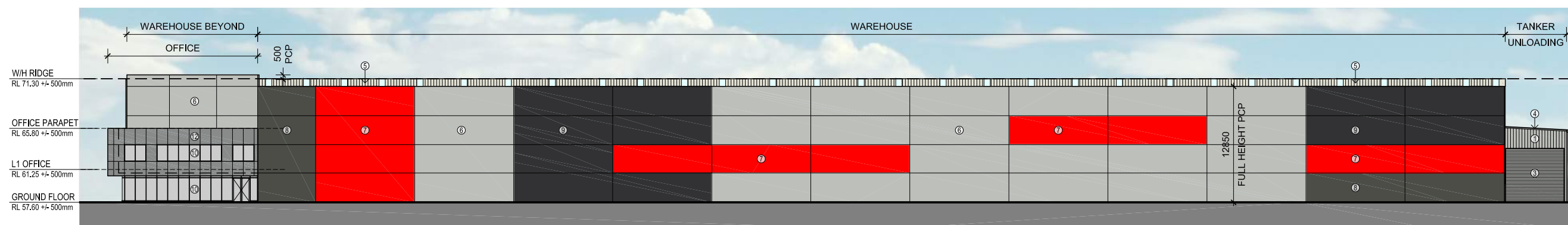
1	PRELIMINARY	27.11.17
A	Issued for DA	20.12.17



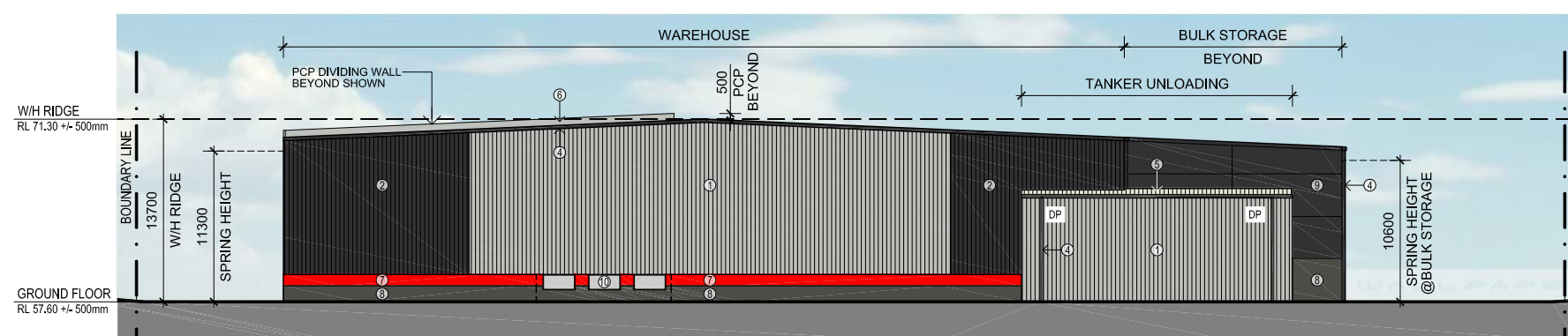
1 WEST ELEVATION
200 Scale 1:500



2 SOUTH ELEVATION
200 Scale 1:500



3 EAST ELEVATION
200 Scale 1:500



4 NORTH ELEVATION
200 Scale 1:500

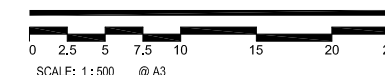
EXTERNAL FINISHES LEGEND

- 1 METAL CLADDING - COLORBOND MATT 'SHALE GREY'
 - 2 METAL CLADDING - COLORBOND MATT 'MONUMENT'
 - 3 ROLLER SHUTTER DOOR - COLORBOND 'SHALE GREY'
 - 4 GUTTERS, DPS, FASCIAS & TRIMS - COLORBOND 'MONUMENT'
 - 5 ZINCALUME ROOF SHEETING WITH 15% TRANSLUCENT SHEETING
 - 6 PRECAST CONCRETE PANEL - PAINT FINISH DULUX COLOUR COLORBOND 'SHALE GREY'
 - 7 PRECAST CONCRETE PANEL - PAINT FINISH TO MATCH WITH NO. 13 RED
 - 8 PRECAST CONCRETE PANEL - PAINT FINISH DULUX COLOUR COLORBOND 'WOODLAND GREY'
 - 9 PRECAST CONCRETE PANEL - PAINT FINISH DULUX COLOUR COLORBOND 'MONUMENT'
 - 10 SELECTED 'GREY TINT' GLAZING TO COMPLY WITH BCA SECTION J
 - 11 SELECTED 'GREY' SPANDREL GLAZING WITH THERMAL INSULATION BEHIND TO COMPLY WITH BCA SECTION J
 - 12 COMPOSITE ALUMINIUM CLADDING TO OFFICE FACADE - SIGNAL GREY
 - 13 COMPOSITE ALUMINIUM CLADDING TO OFFICE FACADE - RED
 - 14 FIRE SPRINKLER TANK - POWDER COATED IN COLORBOND 'MONUMENT'
 - 15 FIRE SPRINKLER TANK - POWDER COATED TO MATCH WITH NO. 13 RED
- PCP PRECAST CONCRETE PANEL



PROJECT
NULON MOTOR OILS
BRINGELLY ROAD
BUSINESS HUB, NSW

DRAWING TITLE
ELEVATIONS - OVERALL



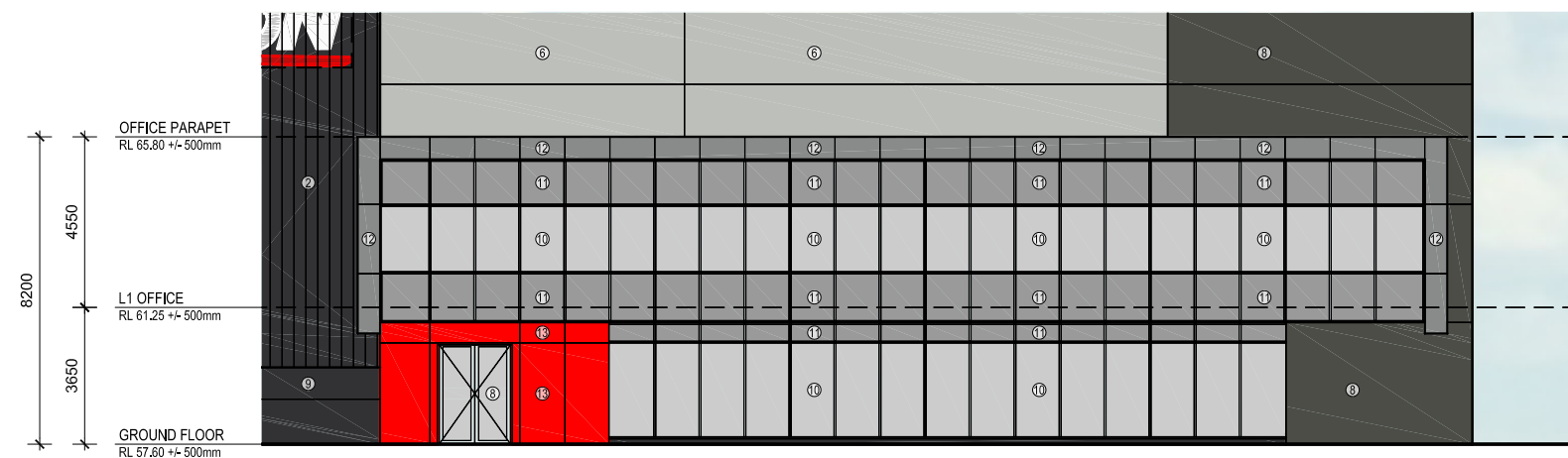
CREATE DATE : 08.12.2017 PLOT DATE : 20.12.2017

LAST SAVED BY: mchung

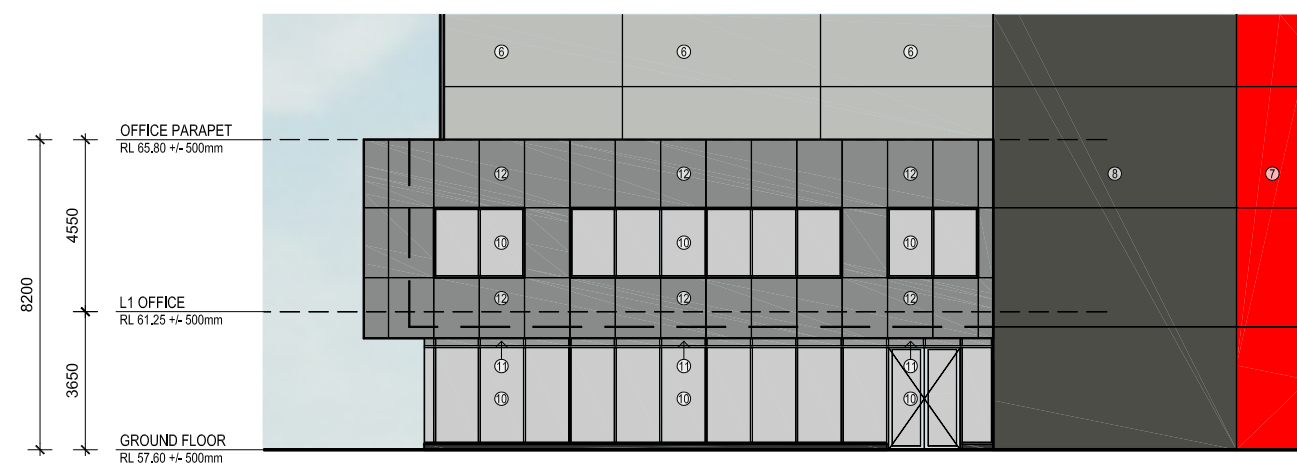
2-319-277062-DA-200 **A**

REVISIONS

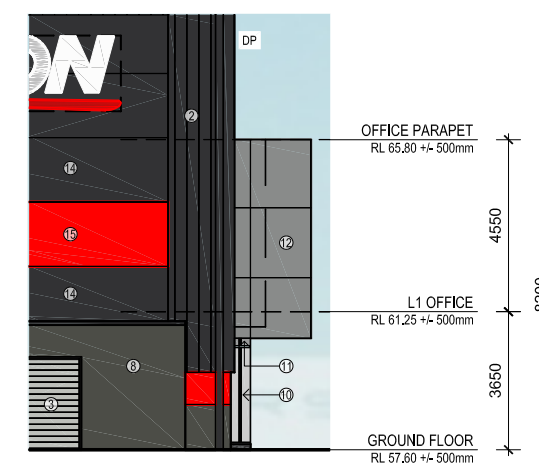
1	PRELIMINARY	27.11.17
A	Issued for DA	20.12.17



1 SOUTH ELEVATION
201 Scale 1:200



2 EAST ELEVATION
201 Scale 1:200



3 WEST ELEVATION
201 Scale 1:200

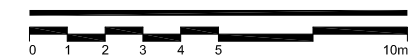
EXTERNAL FINISHES LEGEND

①	METAL CLADDING - COLORBOND MATT 'SHALE GREY'
②	METAL CLADDING - COLORBOND MATT 'MONUMENT'
③	ROLLER SHUTTER DOOR - COLORBOND 'SHALE GREY'
④	GUTTERS, DPS, FASCIAS & TRIMS - COLORBOND 'MONUMENT'
⑤	ZINCALUME ROOF SHEETING WITH 15% TRANSLUCENT SHEETING
⑥	PRECAST CONCRETE PANEL - PAINT FINISH DULLUX COLOUR COLORBOND 'SHALE GREY'
⑦	PRECAST CONCRETE PANEL - PAINT FINISH TO MATCH WITH NO. 13 RED
⑧	PRECAST CONCRETE PANEL - PAINT FINISH DULLUX COLOUR COLORBOND 'WOODLAND GREY'
⑨	PRECAST CONCRETE PANEL - PAINT FINISH DULLUX COLOUR COLORBOND 'MONUMENT'
⑩	SELECTED 'GREY TINT' GLAZING TO COMPLY WITH BCA SECTION J
⑪	SELECTED 'GREY' SPANDREL GLAZING WITH THERMAL INSULATION BEHIND TO COMPLY WITH BCA SECTION J
⑫	COMPOSITE ALUMINIUM CLADDING TO OFFICE FACADE - SIGNAL GREY
⑬	COMPOSITE ALUMINIUM CLADDING TO OFFICE FACADE - RED
⑭	FIRE SPRINKLER TANK - POWDER COATED IN COLORBOND 'MONUMENT'
⑮	FIRE SPRINKLER TANK - POWDER COATED TO MATCH WITH NO. 13 RED
PCP	PRECAST CONCRETE PANEL



PROJECT
NULON MOTOR OILS
BRINGELLY ROAD
BUSINESS HUB, NSW

DRAWING TITLE
ELEVATIONS - OFFICE



SCALE: 1:200 @ A3

CREATE DATE: 08.12.2017 PLOT DATE: 20.12.2017

LAST SAVED BY: mchung

2-319-277062-DA -201

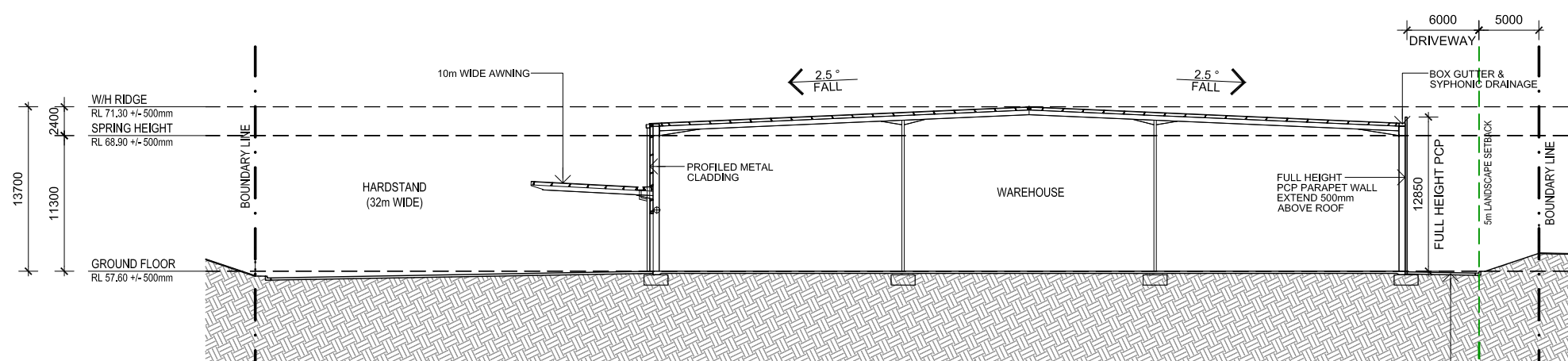
A

REVISIONS

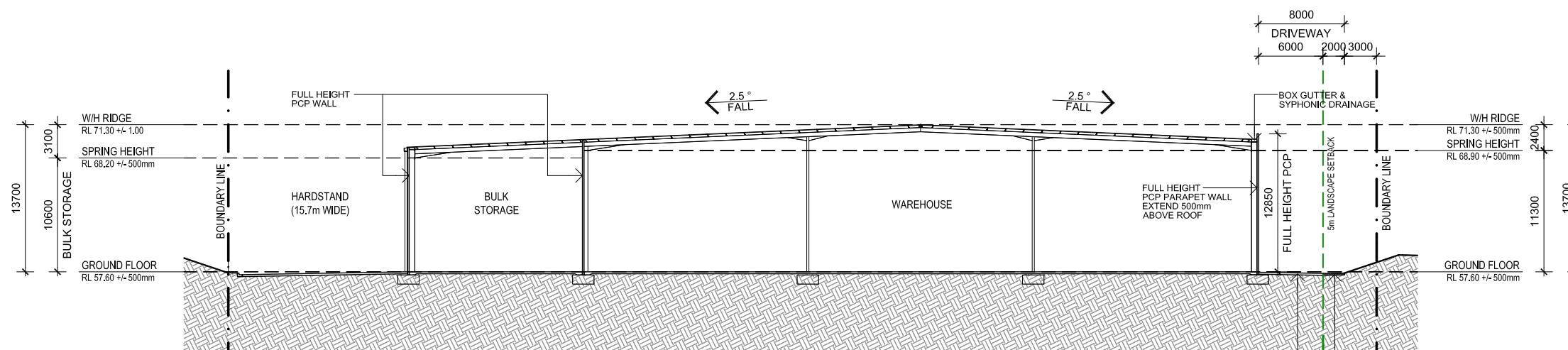
1	PRELIMINARY	27.11.17
A	Issued for DA	20.12.17

LEGEND

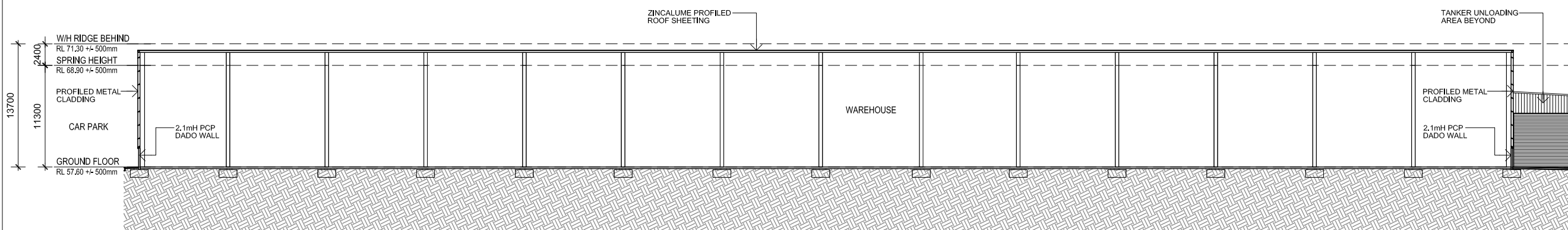
PCP PRECAST CONCRETE PANEL



A SECTION A-A
002 Scale 1:500



B SECTION B-B
002 Scale 1:500

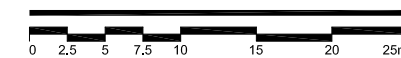


C SECTION C-C
002 Scale 1:500



PROJECT
NULON MOTOR OILS
BRINGELLY ROAD
BUSINESS HUB, NSW

DRAWING TITLE
SECTIONS



CREATE DATE : 08.12.2017 PLOT DATE : 20.12.2017
LAST SAVED BY: mchung

2-319-277062-DA -300

A