

# ONE SYDNEY HARBOUR

## BARANGAROO SOUTH



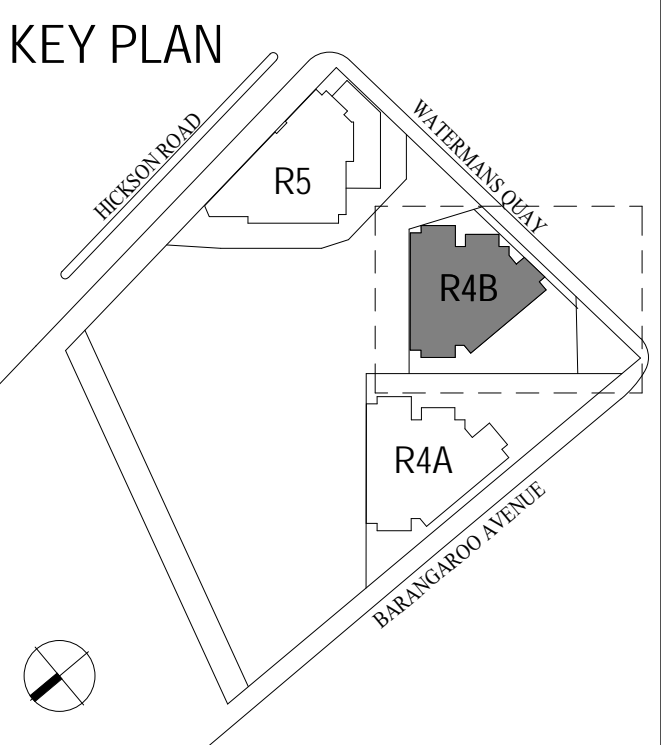
### STAGE 1B - Building R4B

### SECTION 4.55

## ARCHITECTURAL DRAWINGS

BR4B	_ASD_	PA2_	0000	TITLE SHEET AND DRAWING LIST
BR4B	_ASD_	PA1_	2001	PLAN PODIUM LEVEL P1
BR4B	_ASD_	PA2_	3048	PLAN UPPER PLATE LEVEL 48-58 / 60-63
BR4B	_ASD_	PA2_	3059	PLAN UPPER PLATE LEVEL 59
BR4B	_ASD_	PA2_	9000	GFA CALCULATION

MODIFICATION:  
1. INTERNAL WALLS AND DOOR ON MEZZANINE PLANT.



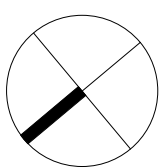
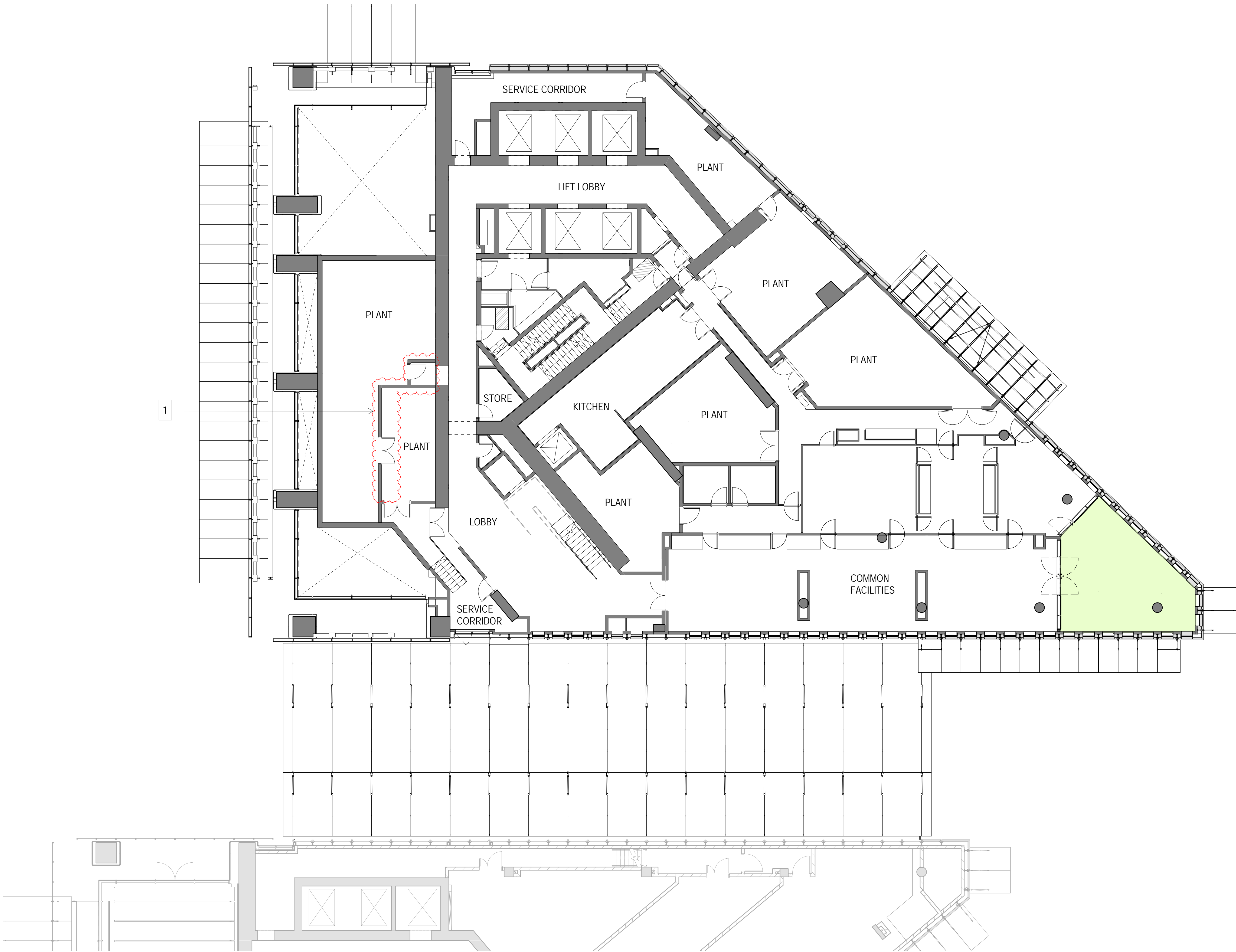
- LEGEND
- ELEMENTS COVERED BY SEPARATE DEVELOPMENT APPLICATION
  - 1-BEDROOM
  - 2-BEDROOM
  - 3-BEDROOM
  - 4-BEDROOM
  - 5-BEDROOM
  - PENTHOUSE
  - SKYHOME
  - BALCONY
  - WINTERGARDEN
  - RETAIL
  - TERRACE
  - BUILDING ENVELOPE BOUNDARY
  - DEVELOPMENT APPLICATION BOUNDARY
  - LINE OF BUILDING OVER

NOTES

SLIDING DOORS TO BALCONIES AND WINTERGARDENS TO HAVE MINIMUM 45% OPENING AREA.

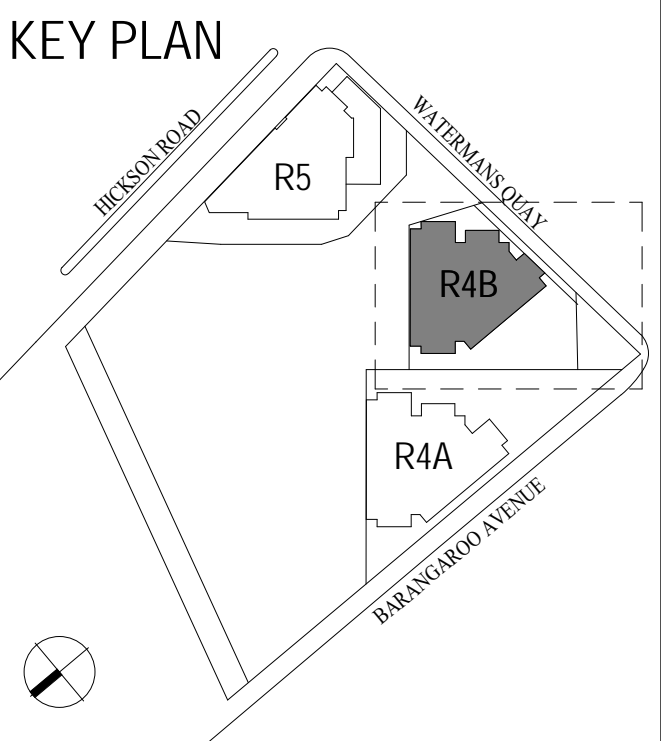
SERVICED LAYOUTS IN PLANT ROOMS SUBJECT TO DETAILED DESIGN.

LEVEL	RL
Podium P1	8.400





MODIFICATION:  
1. SERVICE PARTITION IDENTIFIED, NO GFA CHANGE.

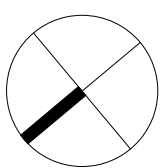


- LEGEND
- ELEMENTS COVERED BY SEPARATE DEVELOPMENT APPLICATION
  - 1-BEDROOM
  - 2-BEDROOM
  - 3-BEDROOM
  - 4-BEDROOM
  - 5-BEDROOM
  - PENTHOUSE
  - SKYHOME
  - BALCONY
  - WINTERGARDEN
  - RETAIL
  - TERRACE
  - BUILDING ENVELOPE BOUNDARY
  - DEVELOPMENT APPLICATION BOUNDARY
  - LINE OF BUILDING OVER

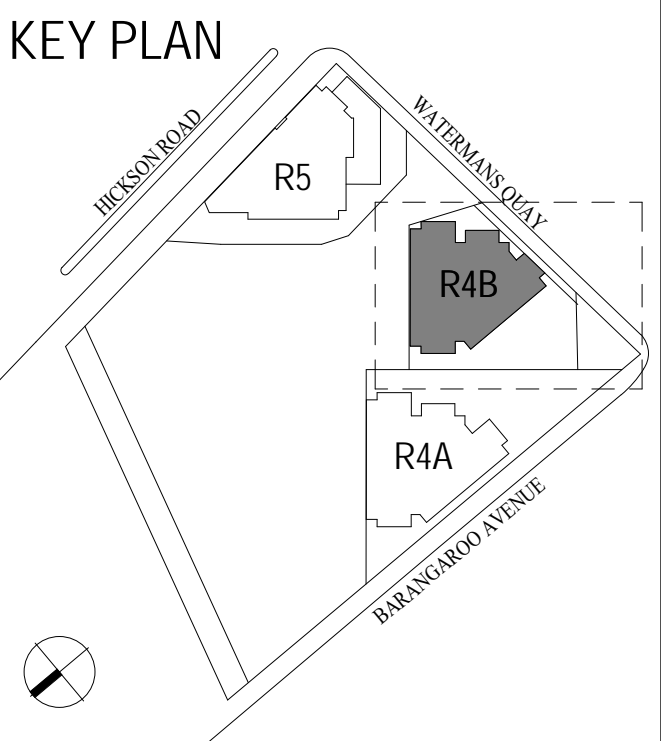
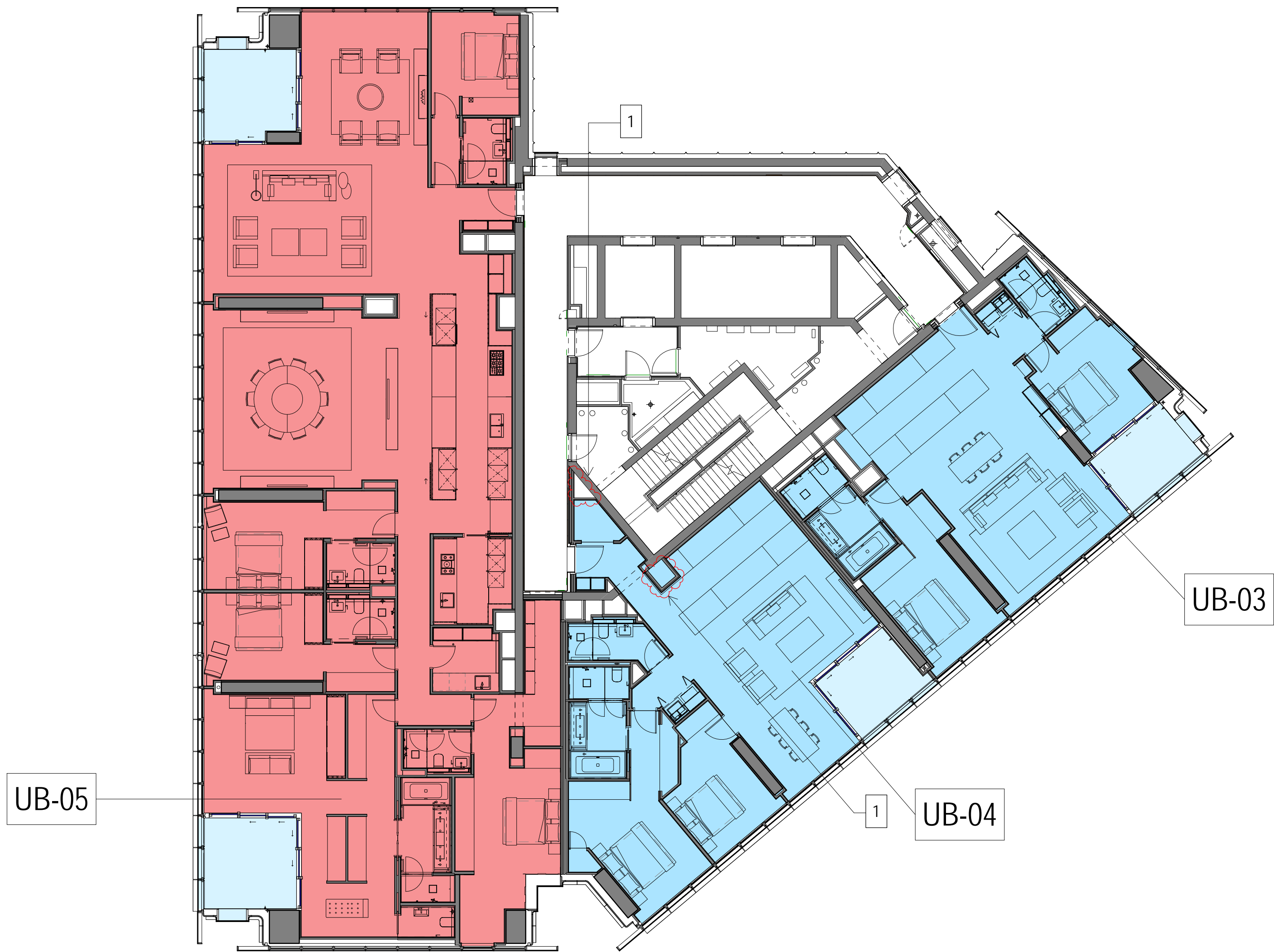
NOTES

SLIDING DOORS TO BALCONIES AND WINTERGARDENS TO HAVE MINIMUM 45% OPENING AREA.

LEVEL	RL
R4B L63	219.005
R4B L62	215.545
R4B L61	212.085
R4B L60	208.625
R4B L58	201.705
R4B L57	198.245
R4B L56	194.785
R4B L55	191.325
R4B L54	187.865
R4B L53	184.405
R4B L52	180.945
R4B L51	177.485
R4B L50	174.025
R4B L49	170.885
R4B L48	167.745



MODIFICATION:  
1. SERVICE PARTITION IDENTIFIED, NO GFA CHANGE.



- LEGEND
- ELEMENTS COVERED BY SEPARATE DEVELOPMENT APPLICATION
  - 1-BEDROOM
  - 2-BEDROOM
  - 3-BEDROOM
  - 4-BEDROOM
  - 5-BEDROOM
  - PENTHOUSE
  - SKYHOME
  - BALCONY
  - WINTERGARDEN
  - RETAIL
  - TERRACE
  - BUILDING ENVELOPE BOUNDARY
  - DEVELOPMENT APPLICATION BOUNDARY
  - LINE OF BUILDING OVER

NOTES

SLIDING DOORS TO BALCONIES AND WINTERGARDENS TO HAVE MINIMUM 45% OPENING AREA.

LEVEL	RL
R4B L59	205.165



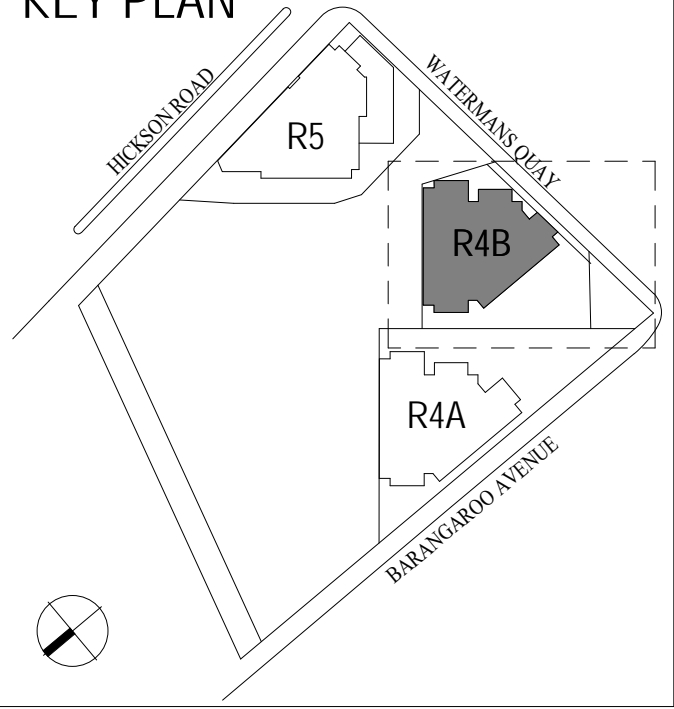
R4B DA AREA SCHEDULE

LEVEL	RESIDENTIAL GFA (EXC WINTERGARDENS) m2	TOTAL BALCONY OR WINTERGARDEN AREA m2	WINTERGARDEN GFA OVER 15% of UNITS GFA m2	TOTAL RESIDENTIAL GFA m2	RETAIL GFA m2	R4B TOTAL GFA m2
Fringe Height Roof Level						
Level 65	587.8	154.2	0.0	587.8		
Level 64	717.0	0.0	0.0	717.0		
Level 63	695.9	35.3	0.0	695.9		
Level 62	695.9	35.3	0.0	695.9		
Level 61	695.9	35.3	0.0	695.9		
Level 60	695.9	35.3	0.0	695.9		
Level 59	695.7	35.3	0.0	695.7		
Level 58	695.9	35.3	0.0	695.9		
Level 57	695.9	35.3	0.0	695.9		
Level 56	695.9	35.3	0.0	695.9		
Level 55	695.9	35.3	0.0	695.9		
Level 54	695.9	35.3	0.0	695.9		
Level 53	695.9	35.3	0.0	695.9		
Level 52	695.9	35.3	0.0	695.9		
Level 51	695.9	35.3	0.0	695.9		
Level 50	695.9	35.3	0.0	695.9		
Level 49	695.9	35.3	0.0	695.9		
Level 48	695.9	35.3	0.0	695.9		
Level 47	0.0	0.0	0.0	0.0		
Level 46	687.8	50.0	0.0	687.8		
Level 45	687.8	50.0	0.0	687.8		
Level 44	687.8	50.0	0.0	687.8		
Level 43	687.8	50.0	0.0	687.8		
Level 42	687.8	50.0	0.0	687.8		
Level 41	687.8	50.0	0.0	687.8		
Level 40	687.8	50.0	0.0	687.8		
Level 39	687.8	50.0	0.0	687.8		
Level 38	687.8	50.0	0.0	687.8		
Level 37	687.8	50.0	0.0	687.8		
Level 36	687.8	50.0	0.0	687.8		
Level 35	687.8	50.0	0.0	687.8		
Level 34	687.8	50.0	0.0	687.8		
Level 33	687.8	50.0	0.0	687.8		
Level 32	669.8	59.2	0.0	669.8		
Level 31	669.8	59.2	0.0	669.8		
Level 30	669.8	59.2	0.0	669.8		
Level 29	669.8	59.2	0.0	669.8		
Level 28	669.8	59.2	0.0	669.8		
Level 27	669.8	59.2	0.0	669.8		
Level 26	669.8	59.2	0.0	669.8		
Level 25	669.8	59.2	0.0	669.8		
Level 24	669.8	59.2	0.0	669.8		
Level 23	669.8	59.2	0.0	669.8		
Level 22	669.8	59.2	0.0	669.8		
Level 21	669.8	59.2	0.0	669.8		
Level 20	0	0.0	0.0	0.0		
Level 19	669.8	59.2	0.0	669.8		
Level 18	669.8	59.2	0.0	669.8		
Level 17	669.8	59.2	0.0	669.8		
Level 16	669.8	59.2	0.0	669.8		
Level 15	669.8	59.2	0.0	669.8		
Level 14	669.8	59.2	0.0	669.8		
Level 13	669.8	59.2	0.0	669.8		
Level 12	669.8	59.2	0.0	669.8		
Level 11	669.8	59.2	0.0	669.8		
Level 10	669.8	59.2	0.0	669.8		
Level 9	669.8	59.2	0.0	669.8		
Level 8	669.8	59.2	0.0	669.8		
Level 7	669.8	59.2	0.0	669.8		
Level 6	669.8	59.2	0.0	669.8		
Level 5	669.8	59.2	0.0	669.8		
Level 4	669.8	59.2	0.0	669.8		
Level 3	669.8	59.2	0.0	669.8		
Level 2	669.8	59.2	0.0	669.8		
Level 1	669.8	59.2	0.0	669.8		
Podium 2	543.9			543.9		
Podium 1	505.5			505.5		
Ground Floor	370.7				309.0	
Basement 1	0.0			0.0		
Basement 0	0.0			0.0		
TOTAL (m2)	44,252	3,252	0	44,252	309	44,561

NOTE:

GFA HAS NOT CHANGED, ONLY REPOSITIONED WITHIN APARTMENT

KEY PLAN



R4B DA UNIT TYPE GFA

APARTMENT TYPE	BED Numbers	AREA m²	BALCONY m²	WINTERGARDEN m²	WINTERGARDEN GFA 15% of UNIT GFA	WINTERGARDEN GFA OVER 15% of UNIT GFA	QUANTITY OF APARTMENTS	TOTAL RESI GFA m²
LEVELS 1 - 19				Number of Levels =		19		
LB-01	3 Bed	156.0		10.4	23.4	0.0	19	2963.1
LB-02	1 Bed	72.9		9.3	10.9	0.0	19	1385.3
LB-03	1 Bed	71.5		9.3	10.7	0.0	19	1357.6
LB-04	2 Bed	120.7		10.4	18.1	0.0	19	2293.3
LB-05	2 Bed	100.1		10.4	15.0	0.0	19	1902.3
LB-06	1 Bed	70.8		9.4	10.6	0.0	19	1345.4
LEVEL 20 - Plant Room								
LEVELS 21 - 32				Number of Levels =		12		
LB-01	3 Bed	156.0		10.4	23.4	0.0	12	1871.4
LB-02	1 Bed	72.9		9.3	10.9	0.0	12	874.9
LB-03	1 Bed	71.5		9.3	10.7	0.0	12	857.4
LB-04	2 Bed	120.7		10.4	18.1	0.0	12	1448.4
LB-05	2 Bed	100.1		10.4	15.0	0.0	12	1201.4
LB-06	1 Bed	70.8		9.4	10.6	0.0	12	849.7
LEVELS 33 - 46				Number of Levels =		14		
MB-01	3 Bed	198.6		10.4	29.8	0.0	14	2780.1
MB-02	2 Bed	114.8		9.5	17.2	0.0	14	1607.3
MB-03	2 Bed	122.0		10.4	18.3	0.0	14	1708.1
MB-04	2 Bed	102.9		10.4	15.4	0.0	14	1440.2
MB-05	1 Bed	72.5		9.4	10.9	0.0	14	1014.4
LEVEL 47 - Plant Room								
LEVELS 48 - 58 / 60 - 63				Number of Levels =		15		
UB-01	3 Bed	195.90		13.05	29.39	0.00	15	2938.50
UB-02	3 Bed	191.02		12.64	28.65	0.00	15	2865.30
UB-03	2 Bed	115.06		9.58	17.26	0.00	15	1725.90
UB-04	2 Bed	125.50		9.73	18.83	0.00	15	1882.50
LEVELS 59				Number of Levels =		1		
UB-05	5 Bed	386.69		25.69	58.00	0.00	1	386.69
UB-03	2 Bed	115.06		9.58	17.26	0.00	1	115.06
UB-04	2 Bed	125.50		9.73	18.83	0.00	1	125.50
LEVELS 64 - 65 (Penthouse & Skyhome)						1		
PH_L64-65	4 Bed	657.8		95.2	98.7	0.0	1	657.8
SH_L64-65	4 Bed	591.9		59.0	88.8	0.0	1	591.9
				Total Penthouse & Skyhome GFA		1249.8		

