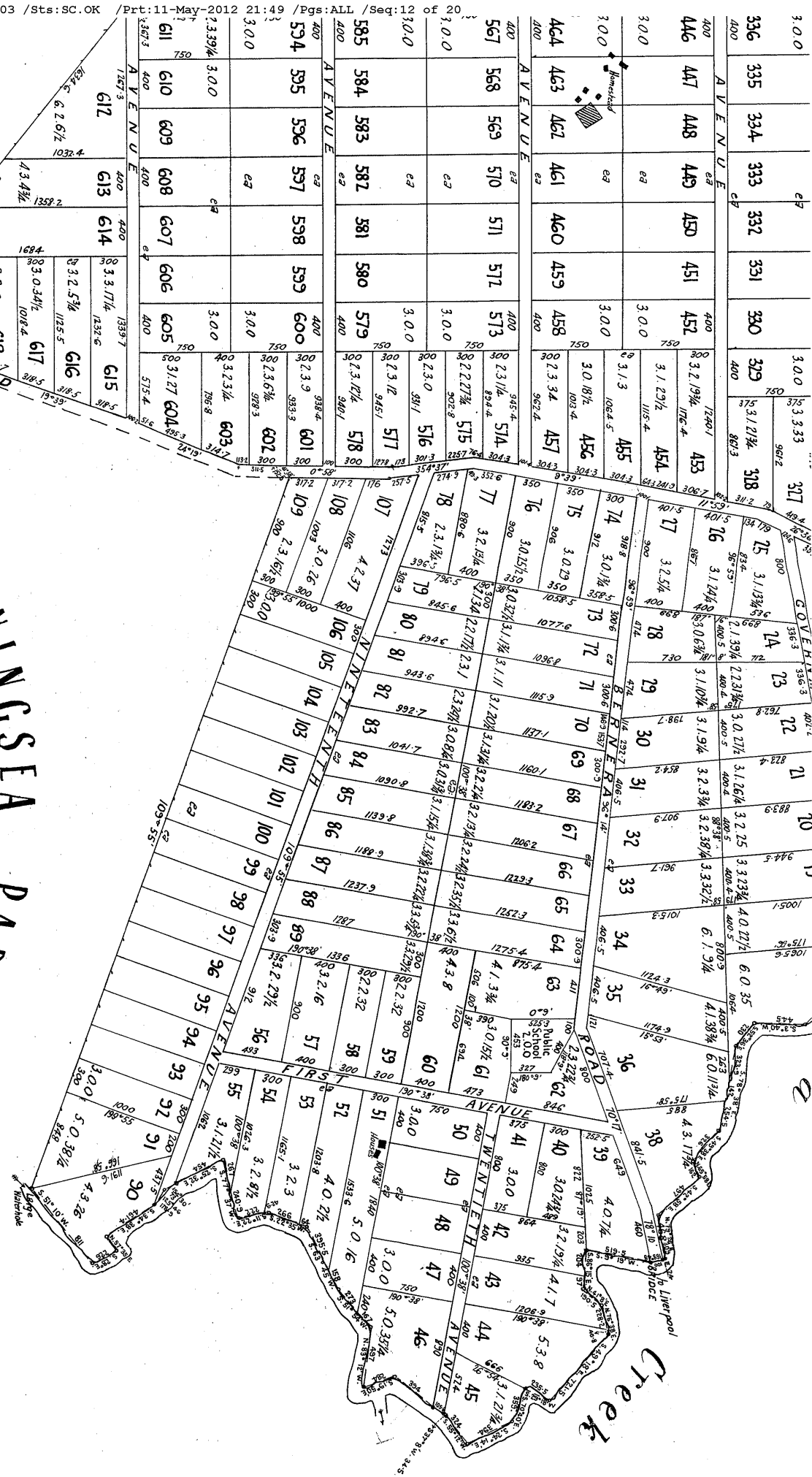




# HORNINGSEA PARK

Captain Lyons  
Owner & Occr

DP2475 (E)



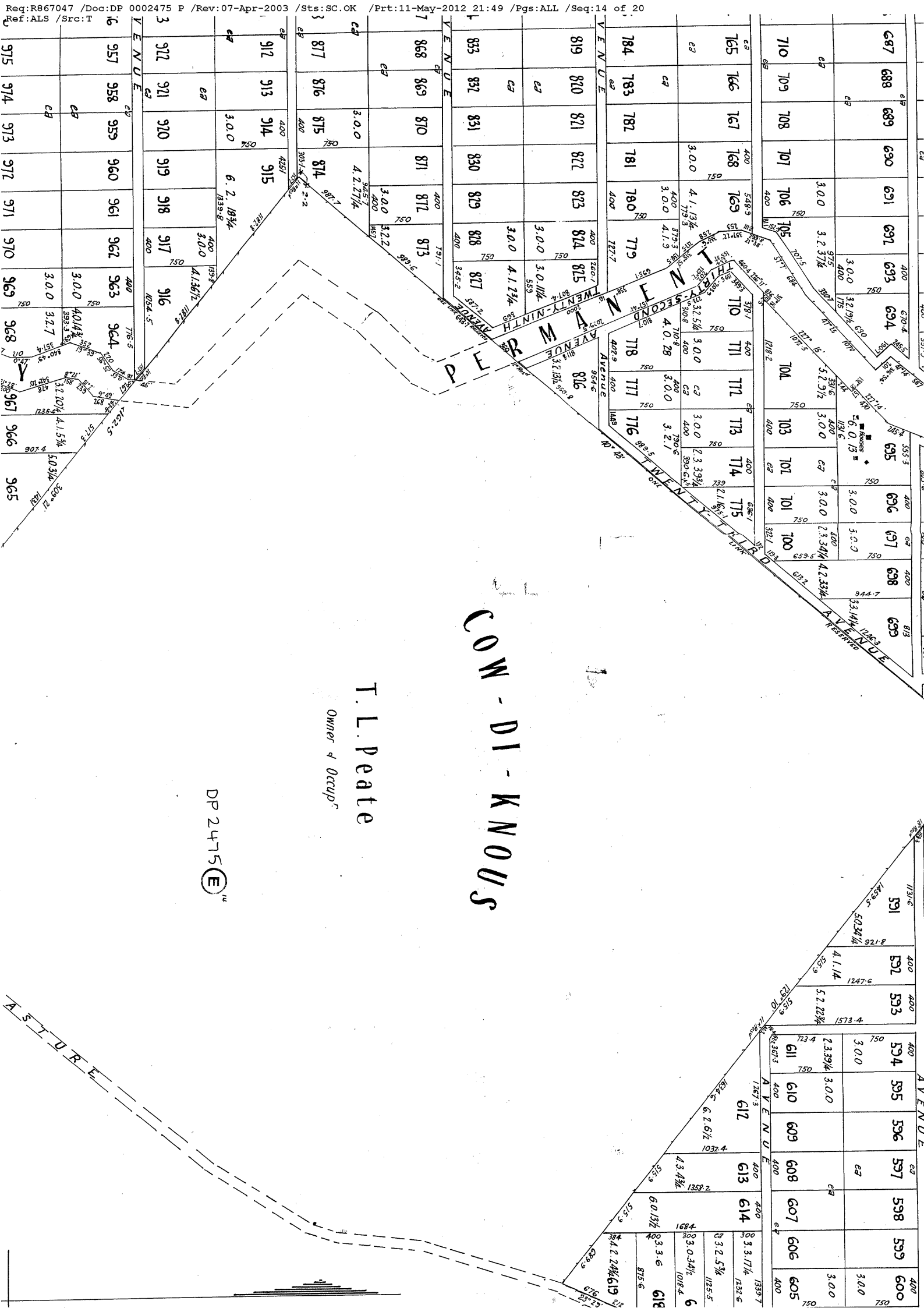
1950



Owner

228

14" Res d										14" Res d										14" Res d										14" Res d									
750										750										750										750									
604.8										604.8										604.8										604.8									
895										896										897										898									
896										897										898										899									
897										898										899										900									
898										899										900										901									
899										900										901										902									
900										901										902										903									
901										902										903										904									
902										903										904										905									
903										904										905										906									
904										905										906										907									
905										906										907										908									
906										907										908										909									
907										908										909										910									
908										909										910										911									
909										910										911										912									
910										911										912										913									
911										912										913										914									
912										913										914										915									
913										914										915										916									
914										915										916										917									
915										916										917										918									
916										917										918										919									
917										918										919										920									
918										919										920										921									
919										920										921										922									
920										921										922										923									
921										922										923										924									
922										923										924										925									
923										924										925										926									
924										925										926										927									
925										926										927										928									
926										927										928										929									
927										928										929										930									
928										929										930										931									
929										930										931										932									
930										931										932										933									
931										932										933										934									
932										933										934										935									
933										934										935										936									
934										935										936										937									
935										936										937										938									
936										937										938										939									
937										938										939										940									
938										939										940										941									
939										940										941										942									
940										941										942										943									
941										942										943										944									
942										943										944										945									
943										944										945										946									
944										945										946										947									
945										946										947										948									
946										947										948										949									
947										948										949										950									
948										949										950										951									
949										950										951										952									
950										951										952										953									
951										952										953										954									
952										953										954										955									
953										954										955										956									
954										955										956										957									
955										956										957										958									
956										957										958										959									
957										958										959										960									
958										959										960										961									
959										960										961										962									
960										961										962										963									
961										962										963										964									
962										963										964										965									
963										964										965										966									
964										965										966										967									
965										966										967										968									
966										967										968										969									
967										968										969										970									
968										969										970										971									
969										970										971										972									
970										971										972										973									
971										972										973										974									
972										973										974										975									
973										974										975										976									
974										975										976										977									
975										976										977										978									
976										977										978										979									
977										978										979										980									
978										979										980										981									
979										980										981										982									
980										981										982										983									
981										982										983										984									
982										983										984										985									
983										984										985										986									
984										985										986										987									
985										986										987										988									
986										987										988										989									
987										988										989										990									
988										989										990										991									
989										990										991										992									
990										991										992										993									
991										992										993										994									
992										993										994										995									
993										994										995										996									
994										995										996										997									
995										996										997										998									
996										997										998										999									
997										998										999										1000									
998										999										1000										1001									
999										1000										1001										1002									
1000										1001										1002										1003									
1001										1002										1003										1004									
1002										1003										1004										1005									
1003										1004										1005										1006									
1004										1005										1006										1007									
1005										1006										1007										1008									
1006										1007										1008										1009									
1007										1008										1009										1010									
1008										1009										1010										1011									
1009										1010										1011										1012									
1010										1011										1012										1013									
1011										1012										1013										1014									
1012										1013										1014										1015									
1013										1014										1015										1016									
1014										1015										1016										1017									
1015										1016										1017										1018									
1016										1017										1018										1019									
1017										1018										1019										1020									
1018										1019										1020										1021									
1019										1020										1021										1022									
1020										1021										1022										1023									
1021										1022										1023										1024									
1022										1023										1024										1025									
1023										1024										1025										1026									
1024										1025										1026										1027									
1025										1026										1027										1028									
1026										1027										1028										1029									
1027										1028										1029										1030									
1028										1029										1030										1031									
1029										1030										1031										1032									
1030										1031										1032										1033									
1031										1032										1033										1034									
1032										1033										1034										1035									
1033										1034										1035										1036									
1034										1035										1036										1037									
1035										1036										1037										1038									
1036										1037										1038										1039									
1037										1038										1039										1040									
1038										1039										1040										1041									
1039										1040										1041										1042									
1040										1041										1042										1043									
1041										1042										1043										1044									
1042										1043										1044										1045									
1043										1044										1045										1046									
1044										1045										1046										1047									
1045										1046										1047										1048									
1046										1047										1048										1049									
1047										1048										1049										1050									
1048										1049										1050										1051									
1049										1050										1051										1052									
1050										1051										1052										1053									
1051										1052										1053										1054									
1052										1053										1054										1055									
1053										1054										1055										1056									
1054										1055										1056										1057									
1055										1056										1057										1058									
1056										1057										1058										1059									
1057										1058										1059										1060									
1058										1059										1060										1061									
1059										1060										1061										1062									
1060										1061										1062										1063									
1061										1062										1063										1064									
1062										1063										1064										1065									
1063										1064										1065										1066									
1064										1065										1066										1067									
1065										1066										1067										1068									
1066										1067										1068										1069									
1067										1068										1069										1070									
1068										1069										1070										1071									
1069										1070										1071										1072									
1070										1071										1072										1073									
1071										1072										1073										1074									
1072										1073										1074										1075									
1073										1074										1075										1076									
1074										1075										1076										1077									
1075										1076										1077										1078									
1076										1077										1078										1079									
1077										1078										1079										1080									
1078										1079										1080										1081									
1079										1080										1081										1082									
1080										1081										1082										1083									
1081										1082										1083										1084									
1082										1083										1084										1085									
1083										1084										1085										1086									
1084										1085										1086										1087									
1085										1086										1087										1088									
1086										1087										1088										1089									
1087										1088										1089										1090									
1088										1089										1090										1091									
1089										1090										1091										1092									
1090										1091										1092										1093									
1091										1092										1093										1094									
1092										1093										1094										1095									
1093										1094										1095										1096									
1094										1095										1096										1097									
1095										1096										1097										1098									
1096										1097										1098										1099									
1097										1098										1099										1100									
1098										1099										1100										1101									
1099										1100										1101										1102									
1100										1101										1102										1103									
1101										1102										1103										1104									
1102										1103										1104										1105									
1103										1104										1105										1106									
1104										1105										1106										1107									
1105										1106										1107										1108									
1106										1107										1108										1109									
1107										1108										1109										1110									
1108										1109										1110										1111									
1109										1110										1111										1112									
1110										1111										1112										1113									
1111										1112										1113										1114									
1112										1113										1114										1115									
1113										1114										1115										1116									
1114										1115										1116										1117									
1115										1116										1117										1118									
1116										1117										1118										1119									
1117										1118										1119										1120									
1118										1119										1120										1121									
1119										1120										1121										1122									
1120										112																													



T.L. Peate  
Owner & Occupant

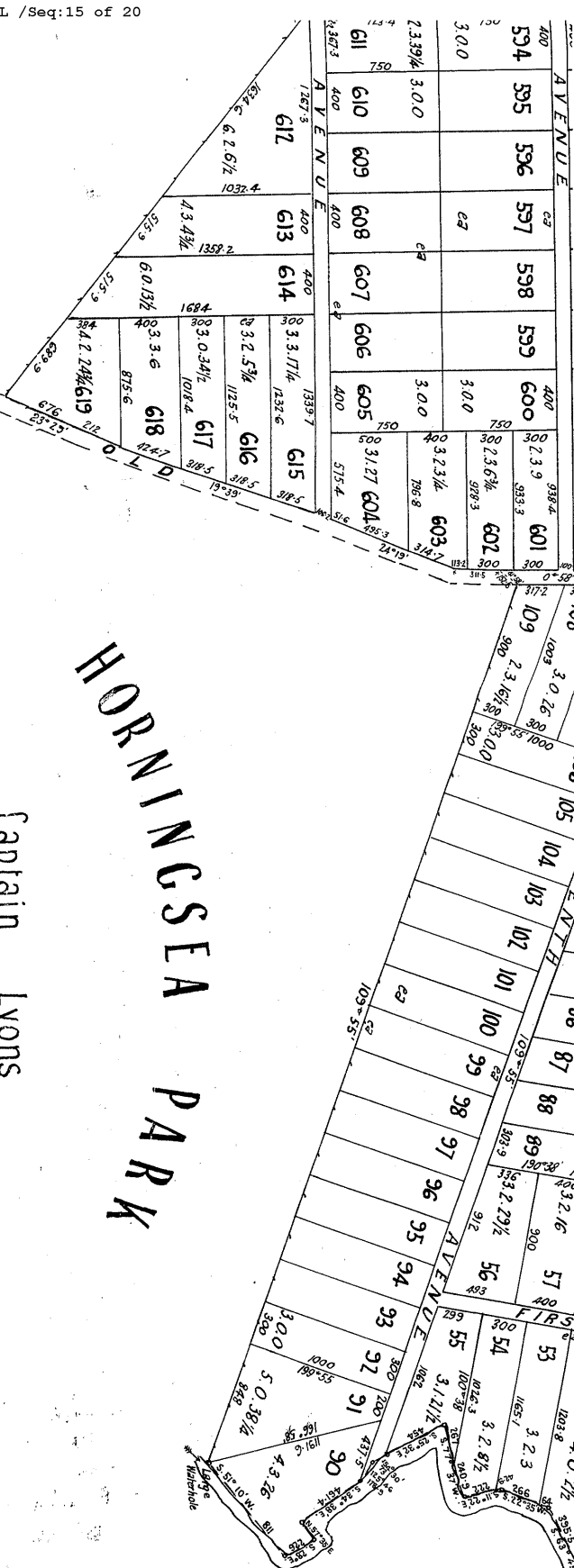
DP 2475 (E)

COM - DI - KNOUS

HORNINGSEA PARK  
Captain Lyons  
Owner & Occ<sup>r</sup>

Captain Lyons  
Owner & Occ.

DP2475 (E)



T Kelsey occupier

DP2475

from Bringer<sup>ty</sup>

Dep

## Plan

[illegible]

5011

# CARNES HILL

NOTE: All Roads One Change

DP 2475 ©

Owner &amp; Occupant:

ds One Chain Wide

**HOXTON PARK**  
Parish of Cabramatta  
**COUNTY OF CUMBERLAND**

Scale 8 Chains to an Inch

**DP2475** <sup>®</sup>



CONVERSION TABLE ADDED IN  
REGISTRAR GENERAL'S DEPARTMENT

LINKS	METRES
0.02	0.005
0.04	0.01
0.06	0.012
0.08	0.013
0.1	0.014
0.12	0.015
0.14	0.016
0.16	0.017
0.18	0.018
0.2	0.019
0.22	0.02
0.24	0.021
0.26	0.022
0.28	0.023
0.3	0.024
0.32	0.025
0.34	0.026
0.36	0.027
0.38	0.028
0.4	0.029
0.42	0.03
0.44	0.031
0.46	0.032
0.48	0.033
0.5	0.034
0.52	0.035
0.54	0.036
0.56	0.037
0.58	0.038
0.6	0.039
0.62	0.04
0.64	0.041
0.66	0.042
0.68	0.043
0.7	0.044
0.72	0.045
0.74	0.046
0.76	0.047
0.78	0.048
0.8	0.049
0.82	0.05
0.84	0.051
0.86	0.052
0.88	0.053
0.9	0.054
0.92	0.055
0.94	0.056
0.96	0.057
0.98	0.058
1	0.059
1.02	0.06
1.04	0.061
1.06	0.062
1.08	0.063
1.1	0.064
1.12	0.065
1.14	0.066
1.16	0.067
1.18	0.068
1.2	0.069
1.22	0.07
1.24	0.071
1.26	0.072
1.28	0.073
1.3	0.074
1.32	0.075
1.34	0.076
1.36	0.077
1.38	0.078
1.4	0.079
1.42	0.08
1.44	0.081
1.46	0.082
1.48	0.083
1.5	0.084
1.52	0.085
1.54	0.086
1.56	0.087
1.58	0.088
1.6	0.089
1.62	0.09
1.64	0.091
1.66	0.092
1.68	0.093
1.7	0.094
1.72	0.095
1.74	0.096
1.76	0.097
1.78	0.098
1.8	0.099
1.82	0.1
1.84	0.101
1.86	0.102
1.88	0.103
1.9	0.104
1.92	0.105
1.94	0.106
1.96	0.107
1.98	0.108
2	0.109
2.02	0.11
2.04	0.111
2.06	0.112
2.08	0.113
2.1	0.114
2.12	0.115
2.14	0.116
2.16	0.117
2.18	0.118
2.2	0.119
2.22	0.12
2.24	0.121
2.26	0.122
2.28	0.123
2.3	0.124
2.32	0.125
2.34	0.126
2.36	0.127
2.38	0.128
2.4	0.129
2.42	0.13
2.44	0.131
2.46	0.132
2.48	0.133
2.5	0.134
2.52	0.135
2.54	0.136
2.56	0.137
2.58	0.138
2.6	0.139
2.62	0.14
2.64	0.141
2.66	0.142
2.68	0.143
2.7	0.144
2.72	0.145
2.74	0.146
2.76	0.147
2.78	0.148
2.8	0.149
2.82	0.15
2.84	0.151
2.86	0.152
2.88	0.153
2.9	0.154
2.92	0.155
2.94	0.156
2.96	0.157
2.98	0.158
3	0.159
3.02	0.16
3.04	0.161
3.06	0.162
3.08	0.163
3.1	0.164
3.12	0.165
3.14	0.166
3.16	0.167
3.18	0.168
3.2	0.169
3.22	0.17
3.24	0.171
3.26	0.172
3.28	0.173
3.3	0.174
3.32	0.175
3.34	0.176
3.36	0.177
3.38	0.178
3.4	0.179
3.42	0.18
3.44	0.181
3.46	0.182
3.48	0.183
3.5	0.184
3.52	0.185
3.54	0.186
3.56	0.187
3.58	0.188
3.6	0.189
3.62	0.19
3.64	0.191
3.66	0.192
3.68	0.193
3.7	0.194
3.72	0.195
3.74	0.196
3.76	0.197
3.78	0.198
3.8	0.199
3.82	0.2
3.84	0.201
3.86	0.202
3.88	0.203
3.9	0.204
3.92	0.205
3.94	0.206
3.96	0.207
3.98	0.208
4	0.209
4.02	0.21
4.04	0.211
4.06	0.212
4.08	0.213
4.1	0.214
4.12	0.215
4.14	0.216
4.16	0.217
4.18	0.218
4.2	0.219
4.22	0.22
4.24	0.221
4.26	0.222
4.28	0.223
4.3	0.224
4.32	0.225
4.34	0.226
4.36	0.227
4.38	0.228
4.4	0.229
4.42	0.23
4.44	0.231
4.46	0.232
4.48	0.233
4.5	0.234
4.52	0.235
4.54	0.236
4.56	0.237
4.58	0.238
4.6	0.239
4.62	0.24
4.64	0.241
4.66	0.242
4.68	0.243
4.7	0.244
4.72	0.245
4.74	0.246
4.76	0.247
4.78	0.248
4.8	0.249
4.82	0.25
4.84	0.251
4.86	0.252
4.88	0.253
4.9	0.254
4.92	0.255
4.94	0.256
4.96	0.257
4.98	0.258
5	0.259
5.02	0.26
5.04	0.261
5.06	0.262
5.08	0.263
5.1	0.264
5.12	0.265
5.14	0.266
5.16	0.267
5.18	0.268
5.2	0.269
5.22	0.27
5.24	0.271
5.26	0.272
5.28	0.273
5.3	0.274
5.32	0.275
5.34	0.276
5.36	0.277
5.38	0.278
5.4	0.279
5.42	0.28
5.44	0.281
5.46	0.282
5.48	0.283
5.5	0.284
5.52	0.285
5.54	0.286
5.56	0.287
5.58	0.288
5.6	0.289
5.62	0.29
5.64	0.291
5.66	0.292
5.68	0.293
5.7	0.294
5.72	0.295
5.74	0.296
5.76	0.297
5.78	0.298
5.8	0.299
5.82	0.3
5.84	0.301
5.86	0.302
5.88	0.303
5.9	0.304
5.92	0.305
5.94	0.306
5.96	0.307
5.98	0.308
6	0.309
6.02	0.31
6.04	0.311
6.06	0.312
6.08	0.313
6.1	0.314
6.12	0.315
6.14	0.316
6.16	0.317
6.18	0.318
6.2	0.319
6.22	0.32
6.24	0.321
6.26	0.322
6.28	0.323
6.3	0.324
6.32	0.325
6.34	0.326
6.36	0.327
6.38	0.328
6.4	0.329
6.42	0.33
6.44	0.331
6.46	0.332
6.48	0.333
6.5	0.334
6.52	0.335
6.54	0.336
6.56	0.337
6.58	0.338
6.6	0.339
6.62	0.34
6.64	0.341
6.66	0.342
6.68	0.343
6.7	0.344
6.72	0.345
6.74	0.346
6.76	0.347
6.78	0.348
6.8	0.349
6.82	0.35
6.84	0.351
6.86	0.352
6.88	0.353
6.9	0.354
6.92	0.355
6.94	0.356
6.96	0.357
6.98	0.358
7	0.359
7.02	0.36
7.04	0.361
7.06	0.362
7.08	0.363
7.1	0.364
7.12	0.365
7.14	0.366
7.16	0.367
7.18	0.368
7.2	0.369
7.22	0.37
7.24	0.371
7.26	0.372
7.28	0.373
7.3	0.374
7.32	0.375
7.34	0.376
7.36	0.377
7.38	0.378
7.4	0.379
7.42	0.38
7.44	0.381
7.46	0.382
7.48	0.383
7.5	0.384
7.52	0.385
7.54	0.386
7.56	0.387
7.58	0.388
7.6	0.389
7.62	0.39
7.64	0.391
7.66	0.392
7.68	0.393
7.7	0.394
7.72	0.395
7.74	0.396
7.76	0.397
7.78	0.398
7.8	0.399
7.82	0.4
7.84	0.401
7.86	0.402
7.88	0.403
7.9	0.404
7.92	0.405
7.94	0.406
7.96	0.407
7.98	0.408
8	0.409
8.02	0.41
8.04	0.411
8.06	0.412
8.08	0.413
8.1	0.414
8.12	0.415
8.14	0.416
8.16	0.417
8.18	0.418
8.2	0.419
8.22	0.42
8.24	0.421
8.26	0.422
8.28	0.423
8.3	0.424
8.32	0.425
8.34	0.426
8.36	0.427
8.38	0.428
8.4	0.429
8.42	0.43
8.44	0.431
8.46	0.432
8.48	0.433
8.5	0.434
8.52	0.435
8.54	0.436
8.56	0.437
8.58	0.438
8.6	0.439
8.62	0.44
8.64	0.441
8.66	0.442
8.68	0.443
8.7	0.444
8.72	0.445
8.74	0.446
8.76	0.447
8.78	0.448
8.8	0.449
8.82	0.45
8.84	0.451
8.86	0.452
8.88	0.453
8.9	0.454
8.92	0.455
8.94	0.456
8.96	0.457
8.98	0.458
9	0.459
9.02	0.46
9.04	0.461
9.06	0.462
9.08	0.463
9.1	0.464
9.12	0.465
9.14	0.466
9.16	0.467
9.18	0.468
9.2	0.469
9.22	0.47
9.24	0.471
9.26	0.472
9.28	0.473
9.3	0.474
9.32	0.475
9.34	0.476
9.36	0.477
9.38	0.478
9.4	0.479
9.42	0.48
9.44	0.481
9.46	0.482
9.48	0.483
9.5	0.484
9.52	0.485
9.54	0.486
9.56	0.487
9.58	0.488
9.6	0.489
9.62	0.49
9.64	0.491
9.66	0.492
9.68	0.493
9.7	0.494
9.72	0.495
9.74	0.496
9.76	0.497
9.78	0.498
9.8	0.499
9.82	0.5
9.84	0.501
9.86	0.502
9.88	0.503
9.9	0.504
9.92	0.505
9.94	0.506
9.96	0.507
9.98	0.508
10	0.509
10.02	0.51
10.04	0.511
10.06	0.512
10.08	0.513
10.1	0.514
10.12	0.515
10.14	0.516
10.16	0.517
10.18	0.518
10.2	0.519
10.22	0.52
10.24	0.521
10.26	0.522
10.28	0.523
10.3	0.524
10.32	0.525
10.34	0.526
10.36	0.527
10.38	0.528
10.4	0.529
10.42	0.53
10.44	0.531
10.46	0.532
10.48	0.533
10.5	0.534
10.52	0.535
10.54	0.536
10.56	0.537
10.58	0.538
10.6	0.539
10.62	0.54
10.64	0.541
10.66	0.542
10.68	0.543
10.7	0.544
10.72	

CONVERSION TABLE ADDED IN  
REGISTRAR GENERAL'S DEPARTMENT

DP 2475 CONTINUED

LINKS	METRES
975	196.14
975.1	196.16
975.2	196.18
975.3	196.20
975.4	196.22
975.5	196.24
975.6	196.26
975.7	196.28
975.8	196.30
975.9	196.32
976	196.34
976.1	196.36
976.2	196.38
976.3	196.40
976.4	196.42
976.5	196.44
976.6	196.46
976.7	196.48
976.8	196.50
976.9	196.52
977	196.54
977.1	196.56
977.2	196.58
977.3	196.60
977.4	196.62
977.5	196.64
977.6	196.66
977.7	196.68
977.8	196.70
977.9	196.72
978	196.74
978.1	196.76
978.2	196.78
978.3	196.80
978.4	196.82
978.5	196.84
978.6	196.86
978.7	196.88
978.8	196.90
978.9	196.92
979	196.94
979.1	196.96
979.2	196.98
979.3	197.00
979.4	197.02
979.5	197.04
979.6	197.06
979.7	197.08
979.8	197.10
979.9	197.12
980	197.14
980.1	197.16
980.2	197.18
980.3	197.20
980.4	197.22
980.5	197.24
980.6	197.26
980.7	197.28
980.8	197.30
980.9	197.32
981	197.34
981.1	197.36
981.2	197.38
981.3	197.40
981.4	197.42
981.5	197.44
981.6	197.46
981.7	197.48
981.8	197.50
981.9	197.52
982	197.54
982.1	197.56
982.2	197.58
982.3	197.60
982.4	197.62
982.5	197.64
982.6	197.66
982.7	197.68
982.8	197.70
982.9	197.72
983	197.74
983.1	197.76
983.2	197.78
983.3	197.80
983.4	197.82
983.5	197.84
983.6	197.86
983.7	197.88
983.8	197.90
983.9	197.92
984	197.94
984.1	197.96
984.2	197.98
984.3	198.00
984.4	198.02
984.5	198.04
984.6	198.06
984.7	198.08
984.8	198.10
984.9	198.12
985	198.14
985.1	198.16
985.2	198.18
985.3	198.20
985.4	198.22
985.5	198.24
985.6	198.26
985.7	198.28
985.8	198.30
985.9	198.32
986	198.34
986.1	198.36
986.2	198.38
986.3	198.40
986.4	198.42
986.5	198.44
986.6	198.46
986.7	198.48
986.8	198.50
986.9	198.52
987	198.54
987.1	198.56
987.2	198.58
987.3	198.60
987.4	198.62
987.5	198.64
987.6	198.66
987.7	198.68
987.8	198.70
987.9	198.72
988	198.74
988.1	198.76
988.2	198.78
988.3	198.80
988.4	198.82
988.5	198.84
988.6	198.86
988.7	198.88
988.8	198.90
988.9	198.92
989	198.94
989.1	198.96
989.2	198.98
989.3	199.00
989.4	199.02
989.5	199.04
989.6	199.06
989.7	199.08
989.8	199.10
989.9	199.12
990	199.14
990.1	199.16
990.2	199.18
990.3	199.20
990.4	199.22
990.5	199.24
990.6	199.26
990.7	199.28
990.8	199.30
990.9	199.32
991	199.34
991.1	199.36
991.2	199.38
991.3	199.40
991.4	199.42
991.5	199.44
991.6	199.46
991.7	199.48
991.8	199.50
991.9	199.52
992	199.54
992.1	199.56
992.2	199.58
992.3	199.60
992.4	199.62
992.5	199.64
992.6	199.66
992.7	199.68
992.8	199.70
992.9	199.72
993	199.74
993.1	199.76
993.2	199.78
993.3	199.80
993.4	199.82
993.5	199.84
993.6	199.86
993.7	199.88
993.8	199.90
993.9	199.92
994	199.94
994.1	199.96
994.2	199.98
994.3	200.00
994.4	200.02
994.5	200.04
994.6	200.06
994.7	200.08
994.8	200.10
994.9	200.12
995	200.14
995.1	200.16
995.2	200.18
995.3	200.20
995.4	200.22
995.5	200.24
995.6	200.26
995.7	200.28
995.8	200.30
995.9	200.32
996	200.34
996.1	200.36
996.2	200.38
996.3	200.40
996.4	200.42
996.5	200.44
996.6	200.46
996.7	200.48
996.8	200.50
996.9	200.52
997	200.54
997.1	200.56
997.2	200.58
997.3	200.60
997.4	200.62
997.5	200.64
997.6	200.66
997.7	200.68
997.8	200.70
997.9	200.72
998	200.74
998.1	200.76
998.2	200.78
998.3	200.80
998.4	200.82
998.5	200.84
998.6	200.86
998.7	200.88
998.8	200.90
998.9	200.92
999	200.94
999.1	200.96
999.2	200.98
999.3	201.00
999.4	201.02
999.5	201.04
999.6	201.06
999.7	201.08
999.8	201.10
999.9	201.12

CONVERSION TABLE ADDED IN  
REGISTRAR GENERAL'S DEPARTMENT

DP 2475 CONTINUED

LINKS	METRES
1840	370.15
1840.1	370.17
1840.2	370.19
1840.3	370.21
1840.4	370.23
1840.5	370.25
1840.6	370.27
1840.7	370.29
1840.8	370.31
1840.9	370.33
1841	370.35
1841.1	370.37
1841.2	370.39
1841.3	370.41
1841.4	370.43
1841.5	370.45
1841.6	370.47
1841.7	370.49
1841.8	370.51
1841.9	370.53
1842	370.55
1842.1	370.57
1842.2	370.59
1842.3	370.61
1842.4	370.63
1842.5	370.65
1842.6	370.67
1842.7	370.69
1842.8	370.71
1842.9	370.73
1843	370.75
1843.1	370.77
1843.2	370.79
1843.3	370.81
1843.4	370.83
1843.5	370.85
1843.6	370.87
1843.7	370.89
1843.8	370.91
1843.9	370.93
1844	370.95
1844.1	370.97
1844.2	370.99
1844.3	371.01
1844.4	371.03
1844.5	371.05
1844.6	371.07
1844.7	371.09
1844.8	371.11
1844.9	371.13
1845	371.15
1845.1	371.17
1845.2	371.19
1845.3	371.21
1845.4	371.23
1845.5	371.25
1845.6	371.27
1845.7	371.29
1845.8	371.31
1845.9	371.33
1846	371.35
1846.1	371.37
1846.2	371.39
1846.3	371.41
1846.4	371.43
1846.5	371.45
1846.6	371.47
1846.7	371.49
1846.8	371.51
1846.9	371.53
1847	371.55
1847.1	371.57
1847.2	371.59
1847.3	371.61
1847.4	371.63
1847.5	371.65
1847.6	371.67
1847.7	371.69
1847.8	371.71
1847.9	371.73
1848	371.75
1848.1	371.77
1848.2	371.79
1848.3	371.81
1848.4	371.83
1848.5	371.85
1848.6	371.87
1848.7	371.89
1848.8	371.91
1848.9	371.93
1849	371.95
1849.1	371.97
1849.2	371.99
1849.3	372.01
1849.4	372.03
1849.5	372.05
1849.6	372.07
1849.7	372.09
1849.8	372.11
1849.9	372.13
1850	372.15
1850.1	372.17
1850.2	372.19
1850.3	372.21
1850.4	372.23
1850.5	372.25
1850.6	372.27
1850.7	372.29
1850.8	372.31
1850.9	372.33
1851	372.35
1851.1	372.37
1851.2	372.39
1851.3	372.41
1851.4	372.43
1851.5	372.45
1851.6	372.47
1851.7	372.49
1851.8	372.51
1851.9	372.53
1852	372.55
1852.1	372.57
1852.2	372.59
1852.3	372.61
1852.4	372.63
1852.5	372.65
1852.6	372.67
1852.7	372.69
1852.8	372.71
1852.9	372.73
1853	372.75
1853.1	372.77
1853.2	372.79
1853.3	372.81
1853.4	372.83
1853.5	372.85
1853.6	372.87
1853.7	372.89
1853.8	372.91
1853.9	372.93
1854	372.95
1854.1	372.97
1854.2	372.99
1854.3	373.01
1854.4	373.03
1854.5	373.05
1854.6	373.07
1854.7	373.09
1854.8	373.11
1854.9	373.13
1855	373.15
1855.1	373.17
1855.2	373.19
1855.3	373.21
1855.4	373.23
1855.5	373.25
1855.6	373.27
1855.7	373.29
1855.8	373.31
1855.9	373.33
1856	373.35
1856.1	373.37
1856.2	373.39
1856.3	373.41
1856.4	373.43
1856.5	373.45
1856.6	373.47
1856.7	373.49
1856.8	373.51
1856.9	373.53
1857	373.55
1857.1	373.57
1857.2	373.59
1857.3	373.61
1857.4	373.63
1857.5	373.65
1857.6	373.67
1857.7	373.69
1857.8	373.71
1857.9	373.73
1858	373.75
1858.1	373.77
1858.2	373.79
1858.3	373.81
1858.4	373.83
1858.5	373.85
1858.6	373.87
1858.7	373.89
1858.8	373.91
1858.9	373.93
1859	373.95
1859.1	373.97
1859.2	373.99
1859.3	374.01
1859.4	374.03
1859.5	374.05
1859.6	374.07
1859.7	374.09
1859.8	374.11
1859.9	374.13
1860	374.15
1860.1	374.17
1860.2	374.19
1860.3	374.21
1860.4	374.23
1860.5	374.25
1860.6	374.27
1860.7	374.29
1860.8	374.31
1860.9	374.33
1861	374.35
1861.1	374.37
1861.2	374.39
1861.3	374.41
1861.4	374.43
1861.5	374.45
1861.6	374.47
1861.7	374.49
1861.8	374.51
1861.9	374.53
1862	374.55
1862.1	374.57
1862.2	374.59
1862.3	374.61
1862.4	374.63

JS  
07 SEP 2015

**ADVANCE LEGAL SEARCHERS PTY LTD**

(ACN 147 943 842)  
ABN 82 147 943 842

P.O. Box 149  
Yagoona NSW 2199

Telephone: +612 9644 1679  
Mobile: 0412 169 809  
Facsimile: +612 8076 3026  
Email: [alsearch@optusnet.com.au](mailto:alsearch@optusnet.com.au)

3<sup>rd</sup> September, 2015

**ENVIRONMENTAL INVESTIGATION SERVICES**  
PO BOX 976,  
NORTH RYDE BC NSW 1670

**Attention: Jack Slater,**

**RE: 140 Eleventh Avenue, Austral**

**Current Search**

Folio Identifier Auto Consol 13885-41 (title attached)  
Lots 811 & 812 DP 2475  
DP 2475 (plan attached)  
Dated 1<sup>st</sup> September, 2015  
Registered Proprietor:  
**FRANCESCA MEDIATI**

**Title Tree**  
**Lots 811 & 812 DP 2475**

Folio Identifier Auto Consol 13885-41

Certificate of Title Volume 13885 Folio 41

Certificate of Title Volume 1172 Folio 31

\*\*\*\*\*

**Summary of proprietor(s)**  
**Lots 811 & 812 DP 2475**

<b>Year</b>	<b>Proprietor</b>
	<b>(Lots 811 &amp; 812 DP 2475 – A/C 13885-41)</b>
2000 – todate	Francesca Mediati
1991 – 2000	Domenico Mediati Francesca Mediati
	<b>(Lots 811 &amp; 812 DP 2475 – CTVol 13885 Fol 41)</b>
1979 – 1991	Domenico Mediati, panel beater Francesca Mediati, wife
	<b>(Lots 811 &amp; 812 DP 2475 – Area 6 Acres – CTVol 1172 Fol 31)</b>
1963 – 1979	Natali Costa, market gardener Domenica Costa, wife
1960 – 1963	Gladys Craik, widow
1954 – 1960	Colin Craik, poultry farmer
1938 – 1954	Adolf Schutte, tobacco worker
1931 – 1938	Heinrich Patroklos Schutte, farmer
1930 – 1931	Clara Schutte, wife of cigar maker
1929 – 1930	Mary Elizabeth Clark Parsons, widow
1921 – 1929	Joseph Charles Gill, farmer
1921 – 1921	Charles Arundel Pennington, conveyancer
1895 – 1921	William Joseph Rainbow, printer

\*\*\*\*\*

Cadastral Records Enquiry Report

Ref : BOX 97 - AUSTRAL

Requested Parcel : Lot 811 DP 2475  
LGA : LIVERPOOL

Identified Parcel : Lot 811 DP 2475

Parish : CABRAMATTA

County : CUMBERLAND

Locality : AUSTRAL



**Advance Legal Searchers  
Pty Ltd** Phone: 02 9644 1679

Advance Legal Searchers Pty Ltd hereby certifies that the information contained in this document has been provided electronically by the Registrar General in accordance with Section 96B(2) of the Real Property Act.

Information provided through Tri-Search an approved LPINSW Information Broker

LAND AND PROPERTY INFORMATION NEW SOUTH WALES - TITLE SEARCH

FOLIO: AUTO CONSOL 13885-41

SEARCH DATE	TIME	EDITION NO	DATE
1/9/2015	6:53 PM	3	17/7/2000

**LAND**

LAND DESCRIBED IN SCHEDULE OF PARCELS  
LOCAL GOVERNMENT AREA LIVERPOOL  
PARISH OF CABRAMATTA COUNTY OF CUMBERLAND  
TITLE DIAGRAM DP2475

**FIRST SCHEDULE**

FRANCESCA MEDIATI (ND 6508130)

**SECOND SCHEDULE (3 NOTIFICATIONS)**

- 1 RESERVATIONS AND CONDITIONS IN THE CROWN GRANT(S)
- 2 I551720 MORTGAGE TO BARCLAYS BANK AUSTRALIA LIMITED
- 3 6948378 MORTGAGE TO ST. GEORGE BANK LIMITED

**NOTATIONS**

NOTE: THE CERTIFICATE OF TITLE FOR THIS FOLIO OF THE REGISTER DOES NOT INCLUDE SECURITY FEATURES INCLUDED ON COMPUTERISED CERTIFICATES OF TITLE ISSUED FROM 4TH JANUARY, 2004. IT IS RECOMMENDED THAT STRINGENT PROCESSES ARE ADOPTED IN VERIFYING THE IDENTITY OF THE PERSON(S) CLAIMING A RIGHT TO DEAL WITH THE LAND COMPRISED IN THIS FOLIO.

UNREGISTERED DEALINGS: NIL

**SCHEDULE OF PARCELS**

LOTS 811-812 IN DP2475.

\*\*\* END OF SEARCH \*\*\*

EIS - Austral

PRINTED ON 1/9/2015

\*ANY ENTRIES PRECEDED BY AN ASTERISK DO NOT APPEAR ON THE CURRENT EDITION OF THE CERTIFICATE OF TITLE. WARNING: THE INFORMATION APPEARING UNDER NOTATIONS HAS NOT BEEN FORMALLY RECORDED IN THE REGISTER.

**Advance Legal Searchers  
Pty Ltd**

Phone: 02 9644 1679

Advance Legal Searchers Pty Ltd hereby certifies that the information contained in this document has been provided electronically by the Registrar General.

Information provided through Tri-Search an approved LPINSW Information Broker

LAND AND PROPERTY INFORMATION NEW SOUTH WALES - HISTORICAL SEARCH

SEARCH DATE

1/9/2015 6:54PM

FOLIO: AUTO CONSOL 13885-41

Recorded	Number	Type of Instrument	C.T. Issue
11/12/1991		CONSOL HISTORY RECORD CREATED FOR AUTO CONSOL 13885-41	
PARCELS IN CONSOL ARE: 811-812/2475.			
10/8/1993	I551720	MORTGAGE	EDITION 1
24/1/2000	6508130	NOTICE OF DEATH	EDITION 2
17/7/2000	6948378	MORTGAGE	EDITION 3

\*\*\* END OF SEARCH \*\*\*

EIS - Austral

PRINTED ON 1/9/2015

\*ANY ENTRIES PRECEDED BY AN ASTERISK DO NOT APPEAR ON THE CURRENT EDITION OF THE CERTIFICATE OF TITLE. WARNING: THE INFORMATION APPEARING UNDER NOTATIONS HAS NOT BEEN FORMALLY RECORDED IN THE REGISTER.

NEW SOUTH WALES



# CERTIFICATE OF TITLE

PROPERTY ACT, 1900



13885041

Vol. 13885 Fol. 41

Appln No 5620

Prior Title Vol. 1172 Fol. 31



EDITION ISSUED

**CANCELLED** 27 6 1979

I certify that the person described in the First Schedule is the registered proprietor of the undermentioned estate in the land within described subject nevertheless to such exceptions encumbrances and interests as are shown in the Second Schedule.

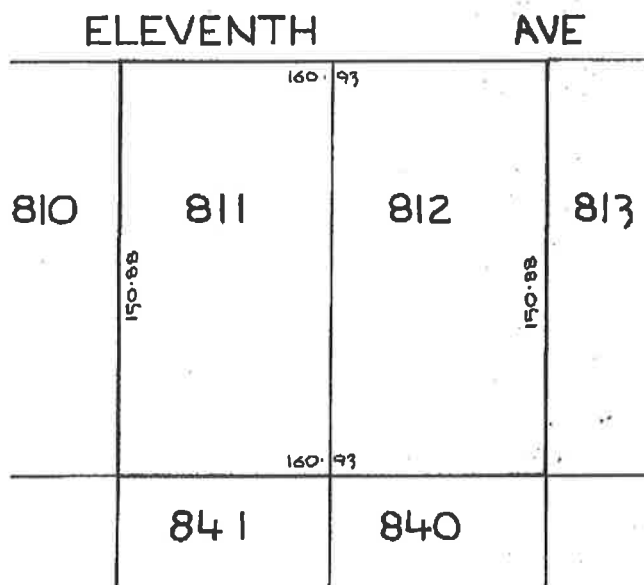
SEE AUTO. FOLIO

Registrar General.



## PLAN SHOWING LOCATION OF LAND

LENGTHS ARE IN METRES



AREA: 2.428 ha

REDUCTION RATIO 1:2000

### ESTATE AND LAND REFERRED TO

Estate in Fee Simple in Lots 811 and 812 in Deposited Plan 2475 in the City of Liverpool Parish of Cabramatta County of Cumberland being part of Portion 33 granted to Thomas Carne on 31-8-1819.

### FIRST SCHEDULE

DOMENICO MEDIATI of Austral, Panel Beater and FRANCESCA MEDIATI his wife, as Joint Tenants.

### SECOND SCHEDULE

1. Reservations and conditions, if any, contained in the Crown Grant above referred to.

PERSONS ARE CAUTIONED AGAINST ALTERING OR ADDING TO THIS CERTIFICATE OR ANY NOTIFICATION HEREON

WARNING: THIS DOCUMENT MUST NOT BE REMOVED FROM THE REGISTRAR GENERAL'S OFFICE.





# **ADVANCE LEGAL SEARCHERS PTY LTD**

(ACN 147 943 842)  
ABN 82 147 943 842

P.O. Box 149  
Yagoona NSW 2199

Telephone: +612 9644 1679  
Mobile: 0412 169 809  
Facsimile: +612 8076 3026  
Email: [alsearch@optusnet.com.au](mailto:alsearch@optusnet.com.au)

05<sup>th</sup> April, 2016

**ENVIRONMENTAL INVESTIGATION SERVICES**  
PO BOX 976,  
**NORTH RYDE BC NSW 1670**

**Attention: Mitchell Delaney,**

**RE: 135 and 135A Tenth Avenue,  
Austral  
Job No. E27556KD**

## **Current Search**

Folio Identifier 840/2475 (title attached)  
DP 2475 (plan attached)  
Dated 04<sup>th</sup> April, 2016  
Registered Proprietor:  
**DOMENICO ACITELLI**

**Title Tree**  
**Lot 840 DP 2475**

Folio Identifier 840/2475

Certificate of Title Volume 6580 Folio 147

Certificate of Title Volume 5600 Folio 21

Certificate of Title Volume 3056 Folio 119

Certificate of Title Volume 1101 Folio 115

\*\*\*\*

## Summary of proprietor(s) Lot 840 DP 2475

Year	Proprietor
	<b>(Lot 840 DP 2475)</b>
2002 – todate	Domenico Acitelli, steel fixer
1988 – 2002	Domenico Acitelli, steel fixer Rosa Acitelli, wife
<i>(1988 – todate)</i>	<i>(various leases shown on Historical Folio 840/2475)</i>
	<b>(Lot 840 DP 2475 – Area 3 Acres – CTVol 6580 Fol 147)</b>
1971 – 1988	Domenico Acitelli, steel fixer Rosa Acitelli, wife
1970 – 1971	Benigno Yioiosa, driver Ascenzina Yioiosa, wife
1963 – 1970	Marius Pirrone, farmer Maryanna Pirrone, wife
1958 – 1963	Vincenzo Villarosa, labourer
1952 – 1958	Marjory Hughes, married woman
	<b>(Lots 839 and 840 DP2475 – Area 6 Acres – CTVol 5600 Fol 21)</b>
1946 – 1952	Joe Spolarich, market gardener
	<b>(Lots 838, 839 and 840 DP 2475 – Area 9 Acres – CTVol 3056 Fol 119)</b>
1920 – 1946	Herbert George Starr, farmer
	<b>(Portion 33 Parish Cabramatta and other lands – Area 4228 Acres – CTVol 1101 Fol 115)</b>
1912 – 1920	The Oriental Bank Corporation Limited

\*\*\*\*\*

Advance Legal Searchers Pty Ltd hereby certifies that the information contained in this document has been provided electronically by the Registrar General in accordance with Section 96B(2) of the Real Property Act.

Information provided through Tri-Search an approved LPI/NSW Information Broker

LAND AND PROPERTY INFORMATION NEW SOUTH WALES - TITLE SEARCH

-----

FOLIO: 840/2475

-----

SEARCH DATE	TIME	EDITION NO	DATE
-----	----	-----	----
4/4/2016	9:25 AM	4	1/10/2002

LAND

----

LOT 840 IN DEPOSITED PLAN 2475  
AT HOXTON PARK  
LOCAL GOVERNMENT AREA LIVERPOOL  
PARISH OF CABRAMATTA COUNTY OF CUMBERLAND  
TITLE DIAGRAM DP2475

FIRST SCHEDULE

-----

DOMENICO ACITELLI (ND 8999981)

SECOND SCHEDULE (1 NOTIFICATION)

-----

1 RESERVATIONS AND CONDITIONS IN THE CROWN GRANT(S)

NOTATIONS

-----

NOTE: THE CERTIFICATE OF TITLE FOR THIS FOLIO OF THE REGISTER DOES NOT INCLUDE SECURITY FEATURES INCLUDED ON COMPUTERISED CERTIFICATES OF TITLE ISSUED FROM 4TH JANUARY, 2004. IT IS RECOMMENDED THAT STRINGENT PROCESSES ARE ADOPTED IN VERIFYING THE IDENTITY OF THE PERSON(S) CLAIMING A RIGHT TO DEAL WITH THE LAND COMPRISED IN THIS FOLIO.

UNREGISTERED DEALINGS: NIL

\*\*\* END OF SEARCH \*\*\*

eis - austral

PRINTED ON 4/4/2016

\*ANY ENTRIES PRECEDED BY AN ASTERISK DO NOT APPEAR ON THE CURRENT EDITION OF THE CERTIFICATE OF TITLE. WARNING: THE INFORMATION APPEARING UNDER NOTATIONS HAS NOT BEEN FORMALLY RECORDED IN THE REGISTER.

# Cadastral Records Enquiry Report

Ref : eis - austral

**Requested Parcel** : Lot 840 DP 2475

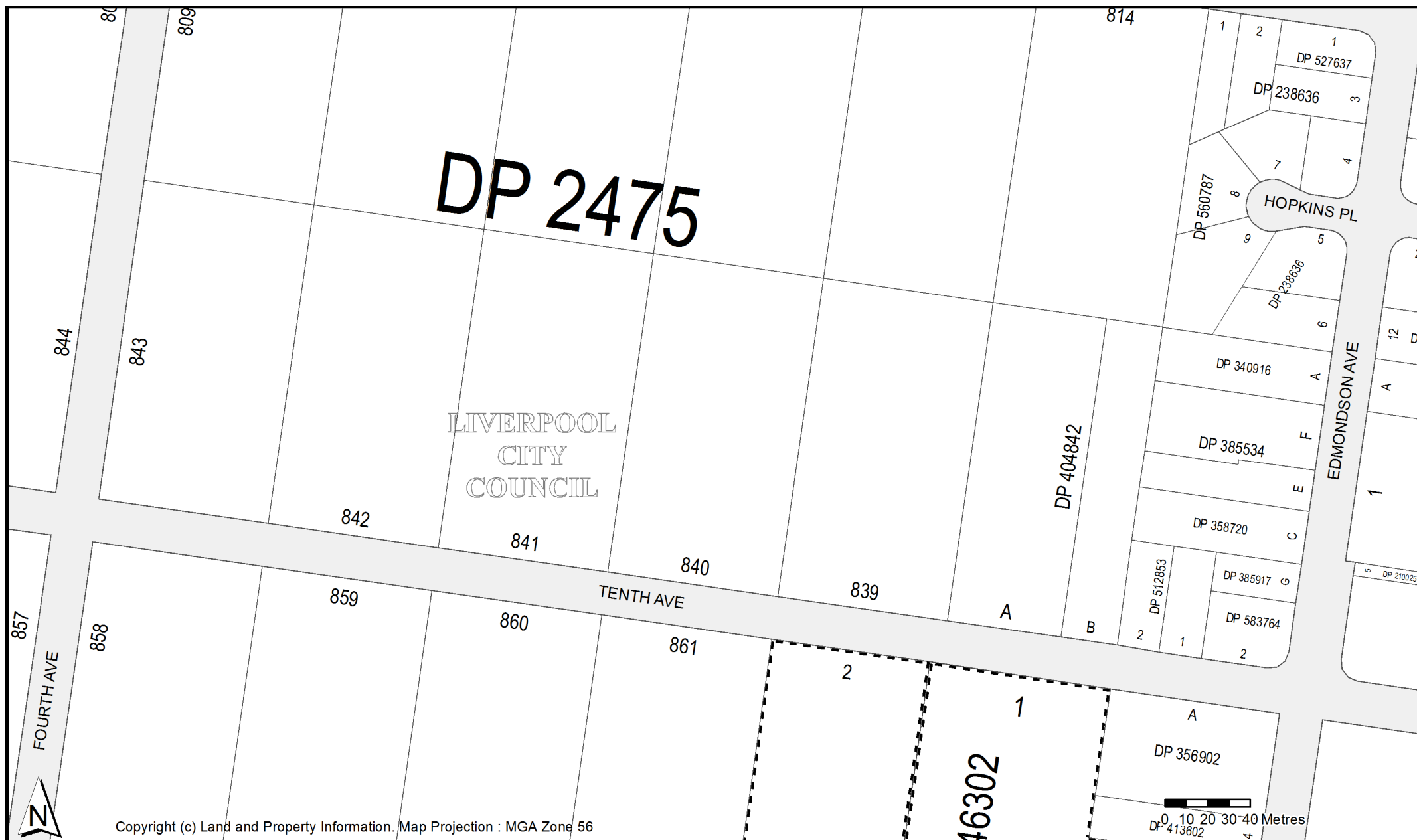
**Identified Parcel** : Lot 840 DP 2475

**Locality** : AUSTRAL

**LGA** : LIVERPOOL

**Parish** : CABRAMATTA

**County** : CUMBERLAND



Copyright (c) Land and Property Information. Map Projection : MGA Zone 56

## Cadastral Records Enquiry Report

Ref : eis - austral

**Requested Parcel** : Lot 840 DP 2475

**Identified Parcel** : Lot 840 DP 2475

**LGA** : LIVERPOOL

**Parish** : CABRAMATTA


**County** : CUMBERLAND

**Locality** : AUSTRAL

Status	Surv/Comp	Purpose
--------	-----------	---------

DP1146302

Lot(s): 1, 2

	DP2475	HISTORICAL	COMPILATION	UNRESEARCHED
	DP413602	HISTORICAL	SURVEY	UNRESEARCHED
	DP413603	HISTORICAL	COMPILATION	UNRESEARCHED
	DP1139459	REGISTERED	SURVEY	CONSOLIDATION
	"KANTARRA LIFESTYLE VILLAGE" APARTMENTS NUMBERED 1-40 AND GARAGES NUMBERED 1-40 IN PLAN WITH MEMORANDUM AE977460			

**Caution:** For all **ACTIVITY PRIOR to SEPT 2002** you must refer to the RGs Charting and Reference Maps.

## Cadastral Records Enquiry Report

Ref : eis - austral

**Requested Parcel** : Lot 840 DP 2475

**Identified Parcel** : Lot 840 DP 2475

**Locality** : AUSTRAL

**LGA** : LIVERPOOL

**Parish** : CABRAMATTA

**County** : CUMBERLAND

Plan	Surv/Comp	Purpose
DP2475	COMPILATION	UNRESEARCHED
DP210025	SURVEY	SUBDIVISION
DP238636	SURVEY	SUBDIVISION
DP255157	SURVEY	SUBDIVISION
DP258224	SURVEY	SUBDIVISION
DP340916	COMPILATION	UNRESEARCHED
DP356902	COMPILATION	UNRESEARCHED
DP358720	COMPILATION	UNRESEARCHED
DP364060	COMPILATION	UNRESEARCHED
DP385534	SURVEY	UNRESEARCHED
DP385917	SURVEY	UNRESEARCHED
DP404842	SURVEY	UNRESEARCHED
DP413602	SURVEY	UNRESEARCHED
DP512853	SURVEY	SUBDIVISION
DP527637	COMPILATION	SUBDIVISION
DP560787	SURVEY	SUBDIVISION
DP583764	COMPILATION	SUBDIVISION
DP748006	COMPILATION	CONSOLIDATION
DP1146302	SURVEY	SUBDIVISION



Ref:eis - austral /Src:T

Form: 02ND  
Release: 1.1  
www.lpi.nsw.gov.au

**NOTICE OF DEATH**

New South Wales  
Section 101 Real Property Act 190

**8999981F**

PRIVACY NOTE: this information is legally required and will b

(A) **LAND**

Torrens Title  
FOLIO IDENTIFIERS 840/2475 and 4/2/978884.

(B) **REGISTERED DEALING**

Number

Torrens Title

(C) **LODGED BY**

Delivery Box

Name, Address or DX and Telephone

**LEGALCO****TEL: 283 5111****178E**

Reference:

Mosca - Acitelli

CODE

**ND**(D) **DECEASED JOINT TENANT**

ROSA ACITELLI.

(E) **SURVIVING JOINT TENANT**

DOMENICO ACITELLI.

(F) I, the surviving joint tenant, apply to be registered as proprietor of the interest of the deceased joint tenant in the above land

(G) **STATUTORY DECLARATION**

I, DOMENICO ACITELLI

solemnly and sincerely declare that the deceased joint tenant—

1. died on 16 May 2002 ; and
2. is identical with the deceased named in the certified copy of death certificate No.16701/2002 accompanying this application.

I make this solemn declaration conscientiously believing the same to be true and by virtue of the provisions of the Oaths Act 1900.

and I certify this application correct for the purposes of the Real Property Act 1900.

Made and subscribed at Liverpool

in the State of New South Wales

on 24th September, 2002.

in the presence of—

Signature of witness:

Signature of declarant:

Name of witness:

DOMENICO MOSCA

Address of witness:

95 MOORA ST  
LIVERPOOL

Qualification of witness:

SOLICITOR

**CT SIGHTED  
CANC. & RET.**

All handwriting must be in block capitals.

Office use only—

Evidence sighted/sighted and returned:

Page 1 of 1

LAND AND PROPERTY INFORMATION NSW

L.G.A. LIVERPOOL

DP 2475

# PLAN OF HOXTON PARK

PARISH OF CABRAMATTA COUNTY OF CUMBERLAND

2475

Scale 10 Chains to 1 Inch.

1. 800 ac. Grant to Thomas Sturrock 13<sup>th</sup> January 1818
2. 360 ac. " " James Foster " " "
3. 400 ac. " " Edward Gray " " "
4. 800 ac. " " James Williamson " " "
5. 550 ac. " " Matthew Fear " " "
6. 700 ac. " " Thomas Carne 31<sup>st</sup> August 1819
7. 200 ac. " " George Williams " " "
8. 100 ac. " " James Stuart " " "
9. 60 ac. " " James Wilbow Trail " " "

Not 3706114

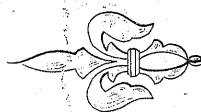
**DAMAGED ORIGINAL  
 ENHANCED COPY IS  
 BEST AVAILABLE.**

Horningsea Park.

Captain Lyons.

(owner & occupier)

COPY MADE *h.b.s.l.*  
 EXAMINED *g.w.r.*



Magnetic

Meridian

— MERIDIAN OBSERVATION —

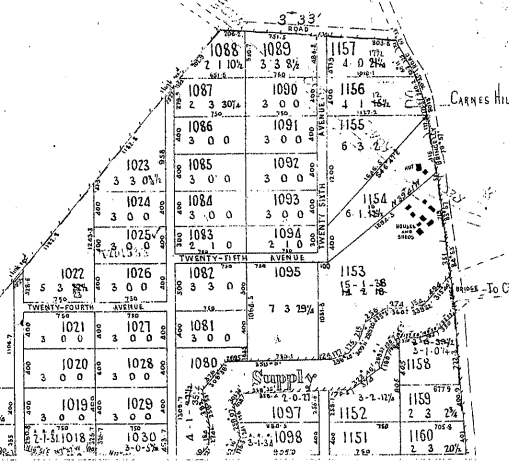
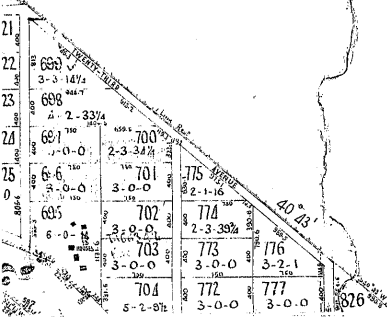
STAR.	LATITUDE.	MAG. BEAR.	ALTITUDE.	DECLINATION.	VARIATION.	DATE OF OBSER.
A: CENTAURI.	34° SOUTH.	134° 02'.	46° 53'.	60° 22' S.	9° 26' E.	20 <sup>th</sup> MAY 1887

DP 2475

"Cow-di-knaves."

T.L. Peate  
 App<sup>n</sup> 8666  
 (OWNER & OCCUPIER)

I certify that Lots 560 & 561 shall  
 be sold in one block  
 also Lot 558 & 559.  
 and Lots 570, 471  
 472 & 473.



John H. H. occasional  
courses Sunday or  
under the Real Property &c.

D.P. 2475

PLAN OF HOX

PARISH OF CABRAMATTA

Scale 10 Chai

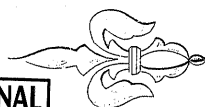
1. 800 ac. Grant to Thomas Sterry
2. 360 ac. " " James Foster
3. 400 ac. " " Edward Grant
4. 800 ac. " " James Williams
5. 550 ac. " " Matthew Rear
6. 700 ac. " " Thomas Carne
7. 200 ac. " " George William
8. 100 ac. " " James Stuart
9. 60 ac. " " James Wilbow

"Hormingsea Park"

Captain Lyons.

(owner & occupier)

DAMAGED ORIGINAL  
ENHANCED COPY IS  
BEST AVAILABLE.



Magnetic

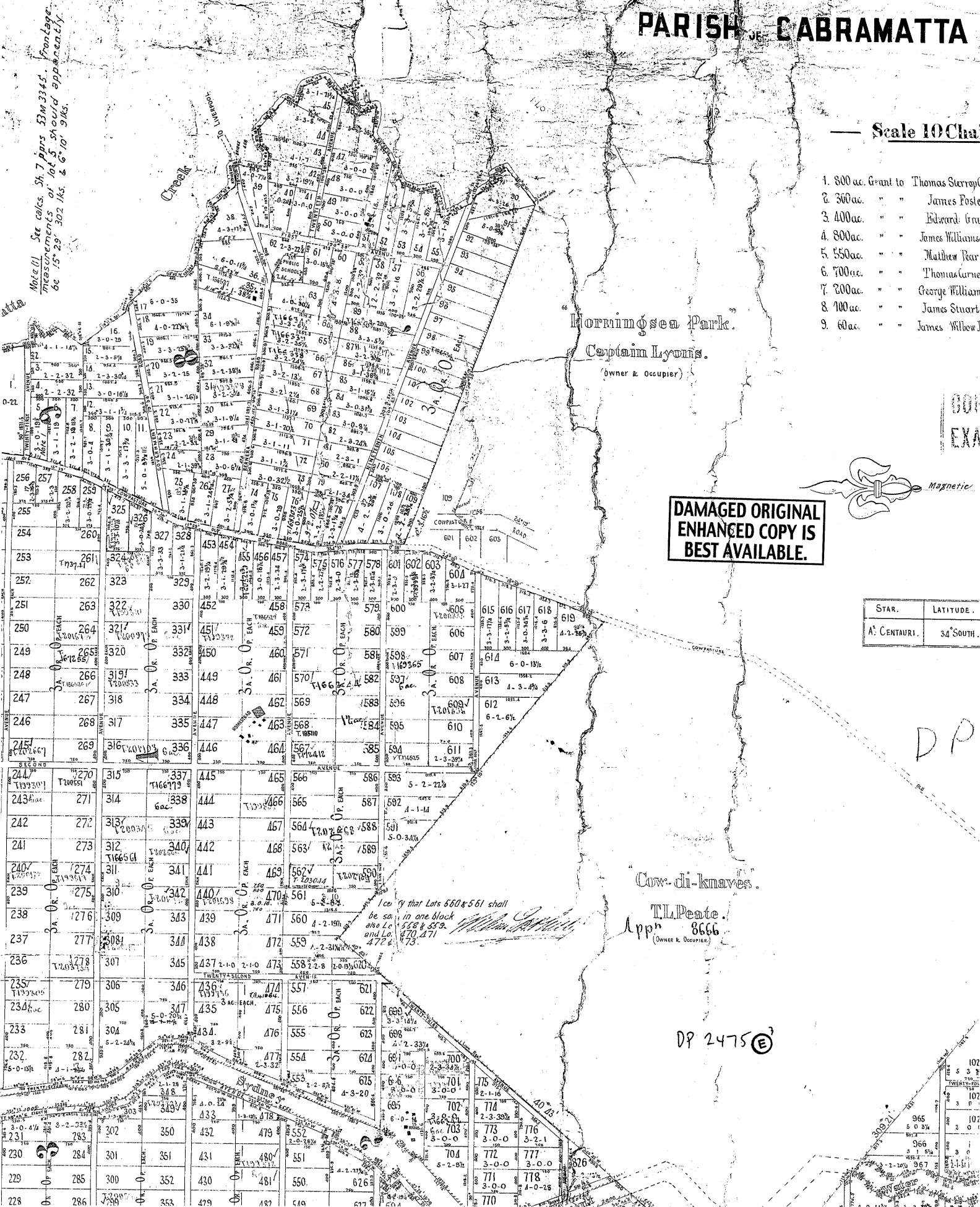
STAR.	LATITUDE.
A. CENTAURI.	34° SOUTH.

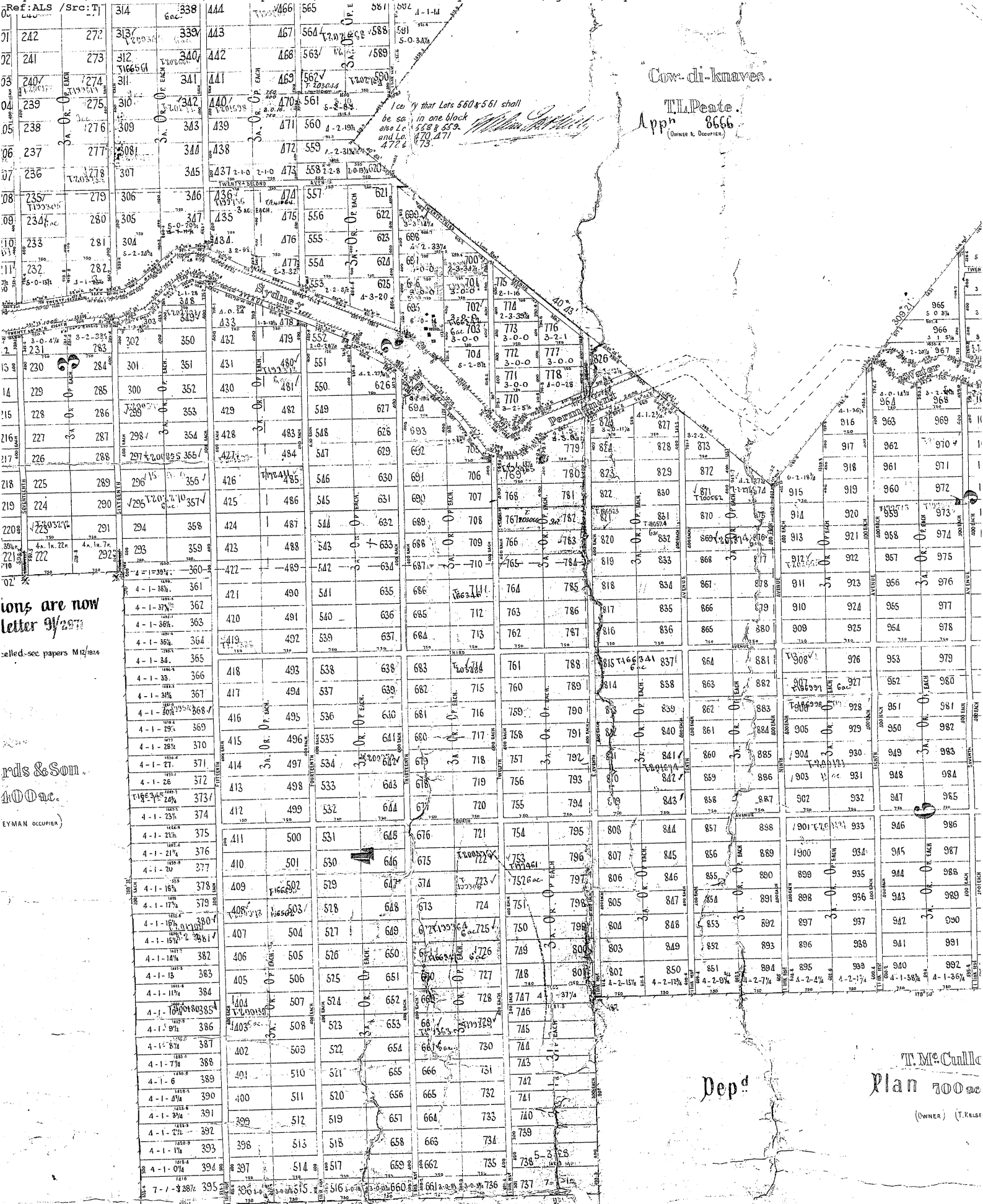
D.P.

"Cow-di-knaves."

T.L. Peate.  
App<sup>n</sup> 8666  
(OWNER & OCCUPIER)

DP 2475 (E)





ions are now  
letter 3/25/11

ards & Son.

100ac.

YMAN (OCCUPY)

W. Leithbridge.  
700ac.

DAMAGED ORIGINAL  
ENHANCED COPY IS  
BEST AVAILABLE.

DP2475 (E)

This is the Plan marked "  
referred to in the annexed  
declaration by J. M. Mac  
this 11th day of July, 188



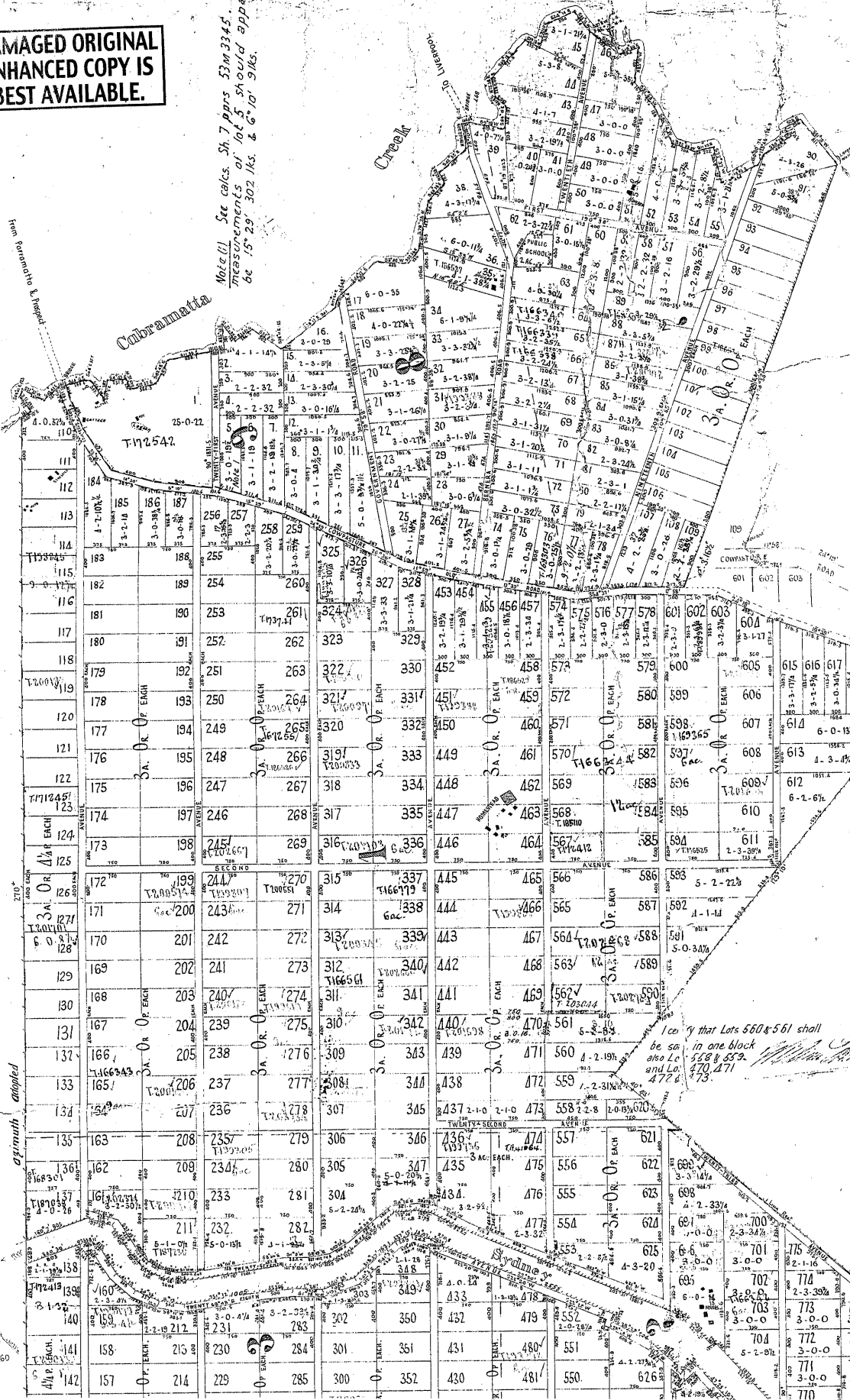
57-3-4-90

D.P. 24750

PARISH

DAMAGED ORIGINAL  
ENHANCED COPY IS  
BEST AVAILABLE.

Note (1) See calc's Sh 7 pgs 53m 3345. Frontage  
measurements of lots 5 should apparently  
be 15' 29" 302 lks. & 6' 10" 5 lks.



Horningsea Park

Captain Lyons.

(owner & occupier)

Cow-di-ku

T.L. Pent  
App 866  
(Owner & Occupier)

HITCHIN BOOK  
H FIRTH 2000 ACRES

Cow-di-k  
 T.L. Peat  
 App<sup>n</sup> 866  
 (OWNER & OCCUPIER)

All Resv<sup>ns</sup>, one link wide, are cancelled - see papers M12/1824

4000ac.

**DAMAGED ORIGINAL  
ENHANCED COPY IS  
BEST AVAILABLE.**

W. Lethbridge  
700ac.

Dep<sup>d</sup>





