

Bell tower marking the main pedestrian access into a public piazza and into the Forum.

Indoor Sports Hall with the locally native species along perimeter.

Broad canopy trees marking the street facade of the development.

A welcoming entry space opening up into the Forum with opportunity for various public event activities, multifunctional seating arrangements and generous public space.

Carpark serving public sections of development allowing for suitable broad canopy trees.

A market garden assembly with attractive fencing around and adjacent carpark as well as bike racks allocated nearby.

A healthy and most significant remnant of Cumberland Plain Woodland will be retained and protected. Additional planting using locally native species will be added. Refer to SK08 for species.

A suite of courts allowing for variety of sport activities, including shelters and seating with broad canopy trees around perimeter.

Additional Fitness Station with potential table tennis area.

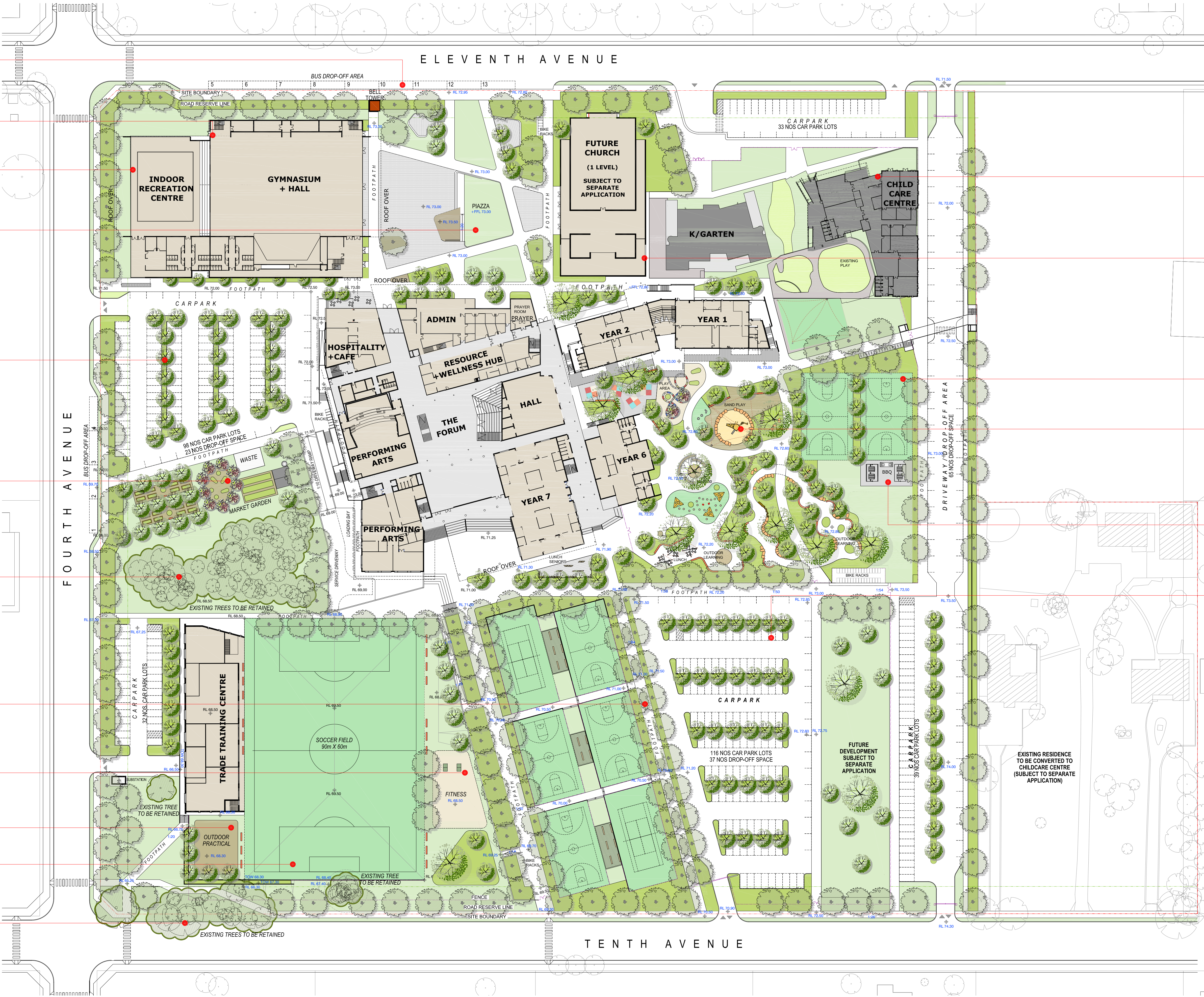
Trade Training Centre outdoor practice area.

A fenced off soccer field

Existing trees on nature strip will be retained as indicated.

LANDSCAPE MASTER PLAN

ST ANTHONY OF PADUA , AUSTRAL



Existing Kindergarten and Early Learning Centre

Proposed church building

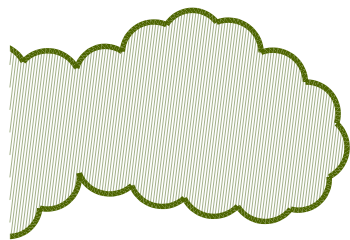
Courts nestled in green open space with shade trees around perimeter.

Extensive outdoor learning area accommodating both quiet and active play, lunch areas and flexible spaces with challenging and stimulating play opportunities. For more detail refer to SK05.

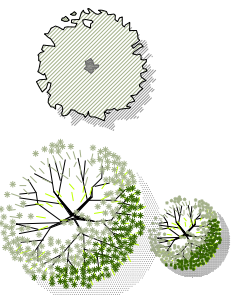
Sheltered BBQ area with table and seating.

Carpark area serving adjacent courts allowing for suitable broad canopy trees. Refer to SK08 for species.

LEGEND



EXISTING TREES TO BE RETAINED & PROTECTED



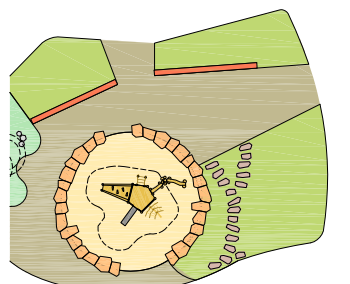
AVENUE & CARPARK TREES REFERS SK07 & SK08 FOR DETAILS



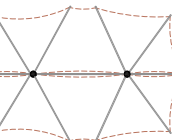
FEATURE & OPEN SPACE TREES



FEATURE PAVINGS



PROPOSED PLAY AREAS



PROPOSED FENCING

PROPOSED SHADE STRUCTURE



BIKE RACKS

SCALE 1:700 @ A1

0 5m 10m 20m 40m



CONCEPT PROPOSAL
L - MP 03 issue E

October 2018