

# ST. ANTHONY OF PADUA CATHOLIC SCHOOL

## SUMMARY OF CONSULTATION OUTCOMES REPORT



30 JULY 2018  
SA7339  
FINAL  
PREPARED FOR SYDNEY CATHOLIC SCHOOLS



**URBIS STAFF RESPONSIBLE FOR THIS REPORT WERE:**

Director	Dianne Knott
Consultant	Alyce Noney
Assistant Planner	Isabelle Kikirekov
Project Code	SA7339
Report Number	Draft

## TABLE OF CONTENTS

1.	Introduction .....	1
1.1.	Purpose.....	1
2.	The proposal .....	2
3.	Consultation process .....	4
3.1.	Purpose of consultation .....	4
3.2.	Overview of activities .....	4
3.3.	Project factsheet .....	4
3.4.	Stakeholder briefings .....	4
3.4.1.	Liverpool City Council .....	4
3.4.2.	Chris Patterson MP, Member for Camden.....	5
3.5.	Community workshop .....	5
3.5.1.	Information provided .....	5
3.5.2.	Feedback .....	6
3.6.	Social Impact Assessment: Stakeholder interviews .....	6
4.	Summary of feedback .....	7
4.1.	Community feedback .....	7
4.2.	Feedback summary .....	8
4.3.	Consideration of feedback .....	12
5.	Conclusion .....	13
	Disclaimer .....	14

<b>Appendix A</b>	Distribution Map
<b>Appendix B</b>	Project Factsheet
<b>Appendix C</b>	Feedback Form

### FIGURES:

Figure 1 – Aerial of the site.....	1
Figure 2 – Proposed Site Plan.....	3

### TABLES:

Table 1 – Summary of key issues .....	8
---------------------------------------	---

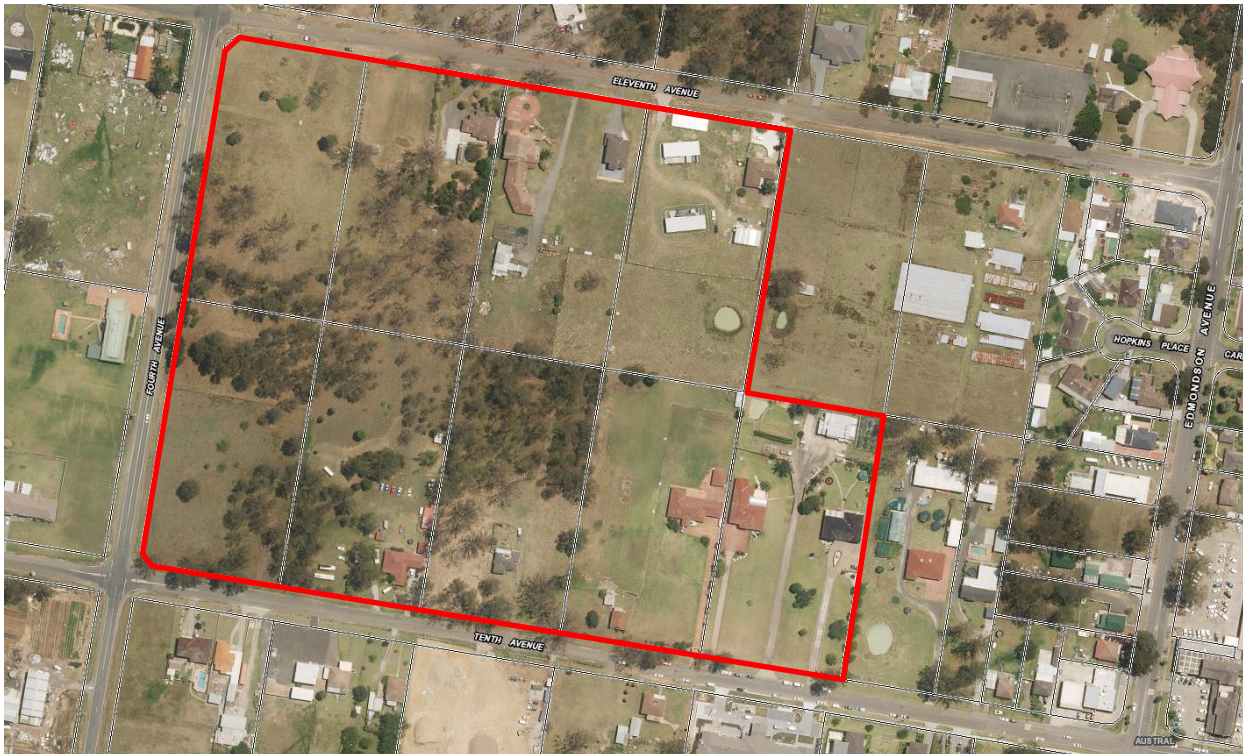


# 1. INTRODUCTION

Urbis Pty Ltd (Urbis) was engaged by Sydney Catholic Schools to undertake community and stakeholder consultation to inform a State Significant Development Application (SSDA) for the expansion of St Anthony of Padua Catholic School, Austral (the school).

The school is located at 125 – 165 Tenth Avenue and 140 – 170 Eleventh Avenue, Austral within the Liverpool Local Government Area (LGA). The school currently accommodates 105 Kindergarten - Year 1 students and has an existing Development Application (DA) approval to allow for 300 students. The SSDA relates to the proposed expansion of the school to accommodate over 2,500 preschool to Year 12 students and associated education facilities.

Figure 1 – Aerial of the site



## 1.1. PURPOSE

Urbis was engaged to provide information and collect feedback on the SSDA proposal and indicative concept plan. This report documents the consultation process, feedback received and considerations in response to that feedback.

This report has been provided to Sydney Catholic Schools (SCS) to help inform the future planning of the school site and will be provided to the Department of Planning and Environment (DP&E) for their consideration as part of the SSDA lodgement process.



## 2. THE PROPOSAL

An SSDA has been prepared to allow for the expansion of the school to cater for over 2,500 preschool to Year 12 students and approximately 200 support staff. The SSDA proposes to include:

- Education buildings for 2,500 students.
- Long day child care centre with 125 places.
- Performing arts theatre with 250 seat capacity.
- Multi-storey Trade Training Centre.
- Indoor recreation centre.
- Development of active and open space on site comprising:
  - Common piazza
  - Market garden
  - Native bushland preservation areas
  - Full sized grass soccer field
  - Four basketball courts.
  - Two tennis courts.
- The construction of new on-site car parks, drop off zones and bus bays with an expected provision of 317 parking spaces, 143 set down/pick up spaces and 150 bicycle spaces. Vehicle access is proposed from Eleventh Avenue, Fourth Avenue and Tenth Avenue with a private, internal road proposed from Eleventh Avenue to Tenth Avenue to facilitate pick up/drop offs.
- Construction of various pedestrian paths and associated landscaping works throughout the site.

As part of the SSDA process, St Anthony of Padua Catholic is working with Liverpool City Council to deliver shared facilities on site which can be used by both students and the wider community. The outcomes of the consultation process documented in this report will also be used to inform the final design and allocation of shared facilities on site.

**PROPOSED NEW SCHOOL BUILDING**

**STREET LAYOUT:** ELEVENTH AVENUE (North), TENTH AVENUE (South), FOURTH AVENUE (West).

**Key Building Components:**

- INDOOR RECREATIONAL CENTRE (1 LEVEL)
- HALL (2 LEVEL)
- PIAZZA
- FUTURE CHURCH (1 LEVEL) - SUBJECT TO SEPARATE APPLICATION
- EXTG. BUILDING K/GARTEN (1 LEVEL)
- CHILD CARE CENTRE (1 LEVEL)
- CAFÉ HOSPITALITY FOOD TECH YEAR 12 (3 LEVEL)
- ADMIN + STAFF (3 LEVEL)
- RESOURCE + WELLNESS (3 LEVEL)
- YEAR 1/2 (2 LEVEL)
- YEAR 3/4 (2 LEVEL)
- YEAR 5/6 (2 LEVEL)
- YEAR 7/8 (2 LEVEL)
- YEAR 9 (ABOVE) (1 LEVEL)
- YEAR 10 (4 LEVEL)
- PERFORMING ARTS SCIENCE YEAR 11 (4 LEVEL)
- ENGINEERING PERFORMING ARTS VISUAL ARTS YEAR 10 (4 LEVEL)
- HALL + AFTER SCHOOL CARE (1 LEVEL)
- THE FORUM
- TRADE TRAINING CENTRE (2 LEVEL)

**Other Features:**

- CARPARK (33 NOS CAR PARK LOTS)
- SOCCER FIELD (90m X 50m)
- BASKETBALL COURTS (PROPOSED)
- OUTDOOR PRACTICAL
- FITNESS
- MARKET GARDEN
- WASTE
- EXISTING TREES TO BE RETAINED
- 10M WIDE LANDSCAPE EDGE
- BOUNDARY LINE
- EXISTING TREES TO BE RETAINED
- EXISTING RESIDENCE TO BE CONVERTED TO CHILDCARE (SUBJECT TO SEPARATE APPLICATION)

URBIS  
STAP\_SUMMARY OF CONSULTATION OUTCOMES REPORT\_FINAL

## **3. CONSULTATION PROCESS**

### **3.1. PURPOSE OF CONSULTATION**

The stakeholder and community consultation process for St. Anthony of Padua Catholic School aimed to:

- Provide accurate information about the SSDA proposal and the overall vision for the school.
- Invite feedback through a range of channels, to inform the ongoing design and planning.
- Inform the finalisation of the proposed concept plan and the preparation of the SSDA for lodgement.
- Collate feedback and prepare a summary of consultation outcomes, to be made available to the Department of Planning and Environment and the general public.

### **3.2. OVERVIEW OF ACTIVITIES**

Community and stakeholder consultation was undertaken from March 2018 – June 2018. Consultation activities included:

- Council workshop held on 19 April 2018 with the project team and attended by approximately 10 members of Liverpool City Council's strategic planning, community and recreational planning, engineering and traffic and transport teams.
- Distribution of a project factsheet on 2 May 2018 to approximately 842 households and local businesses, providing information on the SSDA proposal, consultation process and the community workshop.
- A briefing with Chris Patterson, MP (Member for Camden) on 7 May 2018.
- A two-hour community workshop held on the 15 May 2018 and attended by approximately 25 people. Formal feedback forms were available at the community workshop, with one completed form received.
- Additional feedback channels comprising of a dedicated project email and 1800 phone number. There were no public enquiries received through these channels.
- Completion of four stakeholder interviews in May 2018 as part of the Social Impact Assessment in relation to the proposal, with feedback integrated into the consultation process.

### **3.3. PROJECT FACTSHEET**

A project factsheet was distributed to approximately 840 households in the catchment area on Wednesday 2 May 2018 to notify residents of the proposed SSDA for the school site and outline key features of the proposal.

The factsheet also advertised details of upcoming community workshop to meet with the Project Team and provide feedback on the proposal. A copy of the distribution catchment and project factsheet can be found in Appendix A and Appendix B respectively.

### **3.4. STAKEHOLDER BRIEFINGS**

An email was sent to Liverpool City Council, Liverpool City Councillors and the State MP offering the opportunity to meet with members of the Project Team to learn more about the proposal and to provide their feedback for the site. During the consultation process, Urbis facilitated two separate briefings with Liverpool City Council and Chris Patterson MP, Member for Camden. At the time of writing there was no uptake from Liverpool City Councillors or Liverpool City Mayor for a briefing.

#### **3.4.1. Liverpool City Council**

A briefing was offered with Liverpool City Council to meet with the Project Team to discuss the proposal, ask questions and provide feedback.

Liverpool City Council accepted the offer to meet with approximately nine members of the Project Team on Thursday 19 April 2018 at Liverpool City Council offices. The briefing was attended by 10 Council staff and



went for approximately 1.5 hrs. Liverpool City Council was represented by staff from the strategic planning, community and recreational planning, engineering and traffic and transport teams.

Overall, Council was supportive of the objectives of the proposal and provided feedback on the design and facility provision. Key themes raised by Council included:

- Supportive of the provision of education uses on site and shared facilities.
- Concern about the potential impact on traffic, access and parking on the local road network. A follow up meeting was undertaken with key members of the Project Team with Council's Traffic and Transport team to further discuss potential traffic impacts and adequate mitigation measures.
- Maintain and prioritise child safety and safe connections on site.

### **3.4.2. Chris Patterson MP, Member for Camden**

A briefing was held with Chris Patterson MP, Member for Camden on Monday 7 May and went for approximately 45 minutes. The briefing was attended by Chris Patterson, the MP office manager and two members of the Project Team.

Overall, the MP was supportive of the provision of the educational uses on site and the proposed design for the school. The MP office offered support to facilitate contact with necessary service providers and re-affirmed the need to maintain a safe pick up/drop off area.

## **3.5. COMMUNITY WORKSHOP**

A two-hour community workshop was held on Tuesday 15 May 2018 at St. Anthony of Padua Catholic School, 140 Eleventh Avenue, Austral. Approximately 25 people attended the workshop, with the majority of attendees identifying as existing families of the school. The workshop was attended by members of the Project Team including:

- St Anthony of Padua Catholic School – Proponent
- Pepper Property – Project manager
- Urbis – Urban planning
- Urbis – Community engagement
- Munns Sly Moore architects – Architect
- CBRK – Traffic consultant.

Liverpool City Council and Councillors were also invited to attend the workshop, with no uptake. Liverpool City Council Strategic Planning Team and Liverpool City Council Mayor were noted as apologies.

### **3.5.1. Information provided**

At the workshop session, information about the project was available in a number of different formats including:

- PowerPoint presentation outlining the school vision, planning process, proposed plans and design.
- Information workshop stations, staffed by relevant members of the Project Team, on the following key areas:
  - Shared spaces and uses
  - Transport, movement and safety
  - About St Anthony of Padua Catholic School
  - Planning context.
- A3 and A2 booklets of the concept plans available at every workshop station.
- Video 'fly through' concept of the proposed design on the TV screens.

- The opportunity to speak directly with members of the Project Team.

### **3.5.2. Feedback**

At the workshop, feedback was invited via:

- Q & A session during the presentation of the proposed plans and design.
- Direct discussions with members of the Project Team at relevant information stations. Members of the Project Team were briefed to note down key issues and questions raised during the discussions, and these were collated and reviewed as the conclusion of the workshop.
- Feedback forms and reply paid envelopes. A copy of the feedback form is provided in Appendix C.

The feedback received is documented in Section 4.1 of this report.

## **3.6. SOCIAL IMPACT ASSESSMENT: STAKEHOLDER INTERVIEWS**

A Social Impact Assessment is currently being prepared by Urbis Community Planning in relation to the proposed SSDA for St Anthony of Padua Catholic School. As part of the SIA process, interviews were conducted with local stakeholders and Liverpool City Council to understand the potential positive and negative impacts of the proposal and to gain feedback. Contact was made with eight local stakeholders and four of these stakeholders accepted the offer to complete an interview. Interviews were completed with the following stakeholders:

- Liverpool City Council – Community Planning and Policy Officer
- Liverpool City Council – Sports Development and Leisure Officer
- Austral Public School
- RSL Lifecare Tobruk Village.

The feedback received from these interviews is documented in Section 4.1 of this report.

## 4. SUMMARY OF FEEDBACK

### 4.1. COMMUNITY FEEDBACK

Most feedback was provided to the Project Team at the community workshop, attended by approximately 25 people, mostly parents of existing students. One feedback form was received at the time of writing with no enquiries received via the 1800 number and project email.

Overall, feedback on the proposed SSDA and concept plan was positive and supportive of the objectives of the proposal. Key areas of concern were in relation to the potential traffic impact and maintaining safety on site for all users of the school.

Key themes which emerged from the feedback included the following.

#### **Traffic and Parking**

- Concern the existing roads around the site are too narrow to accommodate a potential increase in traffic and that the proposal will reduce the availability of street parking on the local road network.
- Support for the provision of a school bus to service the local area and to extend into the new estates around Austral.

#### **Pedestrian Safety**

- Concern the potential increase in traffic will impact on pedestrian safety, particularly for young children and older residents.

#### **Safety**

- Support for security to be retained and enhanced on site, particularly by maintaining the site boundary.
- General concern and questions regarding how child safety and access control will be implemented and maintained on site in regards to the proposed shared facilities.

#### **Shared facilities and concept plan**

- Overall support for the provision of shared facilities on site which can be utilised by both the school and wider community. There was also strong interest in how shared uses are managed, to ensure no damage to property or conflict of use between students and the public.
- Support for the overall vision for the site, including the location, open space and recreation facilities, education buildings, piazza area and shared facilities.
- Support for the provision of the proposed Trade Training Centre on site to be open to the school and local community to facilitate training courses.

#### **Access to education**

- Support and recognition for the provision of additional education services in Austral to meet expected demand across the Liverpool LGA. There was also recognition of a preference demand for non-government schools in the area.
- Questions regarding the suitability of a non-government school in the local area.

## 4.2. FEEDBACK SUMMARY

Key themes which emerged during the consultation process are outlined in Table 1 below.

Table 1 – Summary of key issues

Themes	Feedback	Response
Traffic and parking	<ul style="list-style-type: none"> <li>Concern the existing roads around the site are too narrow to accommodate a potential increase in traffic, particularly Tenth Avenue.</li> <li>Concern the potential increase in traffic from the proposal will impact on the availability of street parking on the local road network.</li> <li>Comment to consider the impact of parking availability at Craik Park from the proposal, as it was indicated this carpark was used for informal school parent/visitor parking.</li> <li>Suggestion for site access to the school to be mechanically monitored, via a boomgate.</li> </ul>	<ul style="list-style-type: none"> <li>Upgrades to the local road network are proposed as part of the SSDA, which include the widening of Fourth, Tenth and Eleventh Avenue, and intersection treatments at Fourth with Tenth and Eleventh Avenues and Edmondson Avenue with Eleventh Avenue.</li> <li>Approximately 317 parking spaces and 143 pick/up drop off spaces are proposed on site, which exceeds Liverpool City Council Development Control Plan (DCP) requirements. All parking is proposed to be contained on site, with no street parking included as part of the proposal.</li> <li>The Transport and Accessibility Impact Assessment report summarised the road network will be able to cater for the proposal, provided the proposed works to the surrounding street network are undertaken.</li> </ul>
Pedestrian safety	<ul style="list-style-type: none"> <li>Concern the potential increase in traffic will impact on pedestrian safety, particularly for young children and older residents.</li> <li>Comment the proposal will impact on pedestrian safety at the unmanned pedestrian crossing at Edmondson Avenue.</li> <li>Suggestion for the proposed, segregated pick up/drop area to be clearly marked on the road to enhance road and pedestrian safety.</li> </ul>	<ul style="list-style-type: none"> <li>A new internal, segregated road is proposed through the site from Tenth to Eleventh Avenue to provide internal drop off/pick up access. The road is proposed to be one directional to minimise the interaction between children and moving vehicles.</li> </ul>
Safety	<ul style="list-style-type: none"> <li>Support for security to be retained and enhanced on site, particularly by maintaining the site boundary.</li> <li>Suggestions to provide fencing around key locations, such as the carpark and site access points.</li> <li>Concern regarding how child safety and access control will be implemented and</li> </ul>	<ul style="list-style-type: none"> <li>The final concept plans will include design mitigation measures to minimise the potential occurrence of unwanted public/student interaction. For example, the proposed shared café on site will include segregated frontages to the public and students, to mitigate any potential for unwanted interaction.</li> <li>A Crime Prevention Through Environmental Design (CPTED) assessment is being</li> </ul>



Themes	Feedback	Response
	<p>maintained in the proposed shared facilities.</p> <ul style="list-style-type: none"> <li>• Question as to whether CCTV and security guards will be provided on site.</li> <li>• Question as to how branches on older trees will be maintained on site to ensure children safety.</li> <li>• Question as to how safe interaction between young children and older children will be monitored and enhanced.</li> </ul>	<p>undertaken in relation to the proposal to recommend safety mitigation measures to be implemented on site.</p> <ul style="list-style-type: none"> <li>• It is proposed a Plan of Management (POM) will be prepared for the finalised shared facilities on site which will outline the management and safety procedures.</li> <li>• A CPTED assessment is being undertaken and will provide relevant safety mitigation measures.</li> <li>• The proposed design considers the multiple age groups on site and proposes to congregate the relevant buildings associated with the junior, primary and secondary schools. Natural boundaries will be associated with the play areas for primary and secondary students to maintain appropriate boundaries and safe interactions between students.</li> </ul>
Shared facilities	<ul style="list-style-type: none"> <li>• Overall support for the provision of shared facilities on site.</li> <li>• Support for the school to provide shared indoor recreation facilities on site, such as indoor sports courts or recreational hall.</li> <li>• Suggestion for shared facilities on site to facilitate both active and social uses.</li> <li>• Suggestion for the provision of a shared cultural space which can be used by the broader community, such as an area which may celebrate the area's Indigenous heritage.</li> <li>• Suggestion for a sport recreation facility which can support large groups i.e. a school sporting carnival.</li> </ul>	<ul style="list-style-type: none"> <li>• The feedback received during this consultation process has been provided to Sydney Catholic Schools to finalise the proposed shared facilities on site.</li> </ul>
Public transport	<ul style="list-style-type: none"> <li>• Support for the provision of a school bus to service the local area and to extend into the new estates around Austral.</li> <li>• Suggestion for a school shuttle bus to facilitate student access to the school from Leppington Station in addition to the</li> <li>• Suggestion for the proposed school bus route to link to Leppington Station.</li> </ul>	<ul style="list-style-type: none"> <li>• Interline Bus Services is the current provider of local school routes in the area. It is expected the school will work with the bus provider in the future to service the school, as part of its proposed expansion.</li> </ul>

Themes	Feedback	Response
Education provision in the Growth Centre	<ul style="list-style-type: none"> <li>• Support for the provision of additional education services in Austral and Liverpool LGA.</li> <li>• Recognition of the need for additional education services to meet the expected future population demand.</li> <li>• Comment Austral is already serviced by three existing schools in the area.</li> <li>• Suggestion a government school may be more appropriate for the current socio-economic profile of the local area.</li> <li>• Recognition there is a preference demand for non-government schools in the local area.</li> <li>• Suggestion for special education provision for preschool to Year 12 students to be provided on site.</li> <li>• Support for the provision of a Trade Training Centre on site and for the centre to be open to the community.</li> <li>• Question if Trade Training services can be provided on site, before the completion of the dedicated building.</li> </ul>	<ul style="list-style-type: none"> <li>• The Western District Plan expects an additional 77,798 students will need to be accommodated in government and non-government schools in the district by 2036, with demand expected to be amongst the highest within the Liverpool LGA.</li> <li>• Consultation with Sydney Catholic Schools (SCS) indicates enrolment in SCS have generally increased since 2007, with continued growth since 2015. SCS indicates that the majority of their schools within Liverpool LGA are at, or nearing, capacity.</li> <li>• SCS has demonstrated education outcomes regardless of socio-economic background and have an extensive program of educational subsidies to ensure equitable access.</li> <li>• The proposed Trade Training Centre is intended to be open to the school and wider community for the completion of trade training and relevant courses, subject to final design and approval.</li> </ul>
Concept plan design	<ul style="list-style-type: none"> <li>• Support for the overall vision of the site, including the location, open space and recreation facilities, education buildings, piazza area and shared facilities.</li> <li>• Comment for a play equipment and skateboard area to be provided on site.</li> <li>• Support for the proposed future re-location of St Anthony of Padua Catholic church on the school site.</li> <li>• Support for the provision of shaded play areas on site.</li> <li>• Questions regarding the construction staging of the proposal.</li> <li>• Support for the school to maintain open access to the community.</li> </ul>	<ul style="list-style-type: none"> <li>• St Anthony of Padua Catholic School aims to build a community school, creating a campus which will service the needs of both enrolled students and the wider community.</li> </ul>

Themes	Feedback	Response
Child care	<ul style="list-style-type: none"> <li>• Support for the provision of early learning centre on site.</li> <li>• Suggestion for affordable, non-denominational places to be accommodated within any proposed child care facility on site.</li> </ul>	<ul style="list-style-type: none"> <li>• It is proposed a Long Day Child Care Centre will be provided on site with capacity for 125 places.</li> </ul>

## 4.3. CONSIDERATION OF FEEDBACK

All feedback received has been provided to Sydney Catholic Schools and the architect consultants for their consideration in the final planning and design of the proposal.

The following section provides a summary of the design considerations based on the feedback received.

### Traffic and parking

- Control measures, such as a gate, will be provided at the staff carpark from Tenth Avenue to manage off-peak access.

### Pedestrian safety

- The proposal includes the development of street frontages to the adjoining road network to improve pedestrian movement and safety around the site. This includes the proposed development of pedestrian paths and kerbs to Eleventh, Fourth and Tenth Avenue, as well as a pedestrian path extension from the site to Edmondson Avenue.
- The development proposes to signalise the road intersections adjoining the site to provide safe pedestrian crossings. This includes the intersections of Edmondson Avenue and Eleventh Avenue, Edmondson Avenue and Tenth Avenue, Fourth Avenue and Eleventh Avenue, and Fourth Avenue and Tenth Avenue.

### Safety

- Two layers of security fencing are included in the proposed designs to secure external play areas for students during school hours, and to allow controlled community access to parts of the site outside of school hours.
- Proposed shared facilities are located at the ground floor of the building, around the forum, to regulate access. The designs include the layering of security and access to regulate community access outside of school hours.
- The areas where trees are to be retained on site are not located within the outdoor recreational areas generally accessible to students. The condition of remnant trees and new trees proposed in the design will be monitored annually.
- Outdoor play spaces are proposed for younger and older children. It is expected students will naturally move to areas that are age-appropriate, based on the designs proposed.

### Concept plan design

- The proposed landscape design includes the provision of shaded structures, as supported by feedback received.



## 5. CONCLUSION

This report summarised the feedback received during the community consultation regarding the proposed State Significant Development Application (SSDA) for the proposed expansion of St Anthony of Padua Catholic School, Austral.

Community consultation was conducted to provide information and collect feedback on the proposal to inform and finalise the proposed SSDA. Overall, feedback on the proposed SSDA and concept plan was positive and supportive of the objectives of the proposal. All community feedback received to date is summarised in this report and provided to Sydney Catholic Schools and the Department of Education and Planning, in accordance with the SSDA lodgement, for their consideration in the future planning of the site.

# DISCLAIMER

This report is dated 30 July 2018 and incorporates information and events up to that date only and excludes any information arising, or event occurring, after that date which may affect the validity of Urbis Pty Ltd's (**Urbis**) opinion in this report. Urbis prepared this report on the instructions, and for the benefit only, of Sydney Catholic Schools (**Instructing Party**) for the purpose of Summary of consultation outcomes report (**Purpose**) and not for any other purpose or use. To the extent permitted by applicable law, Urbis expressly disclaims all liability, whether direct or indirect, to the Instructing Party which relies or purports to rely on this report for any purpose other than the Purpose, and to any other person which relies or purports to rely on this report for any purpose whatsoever (including the Purpose).

In preparing this report, Urbis was required to make judgements which may be affected by unforeseen future events, the likelihood and effects of which are not capable of precise assessment.

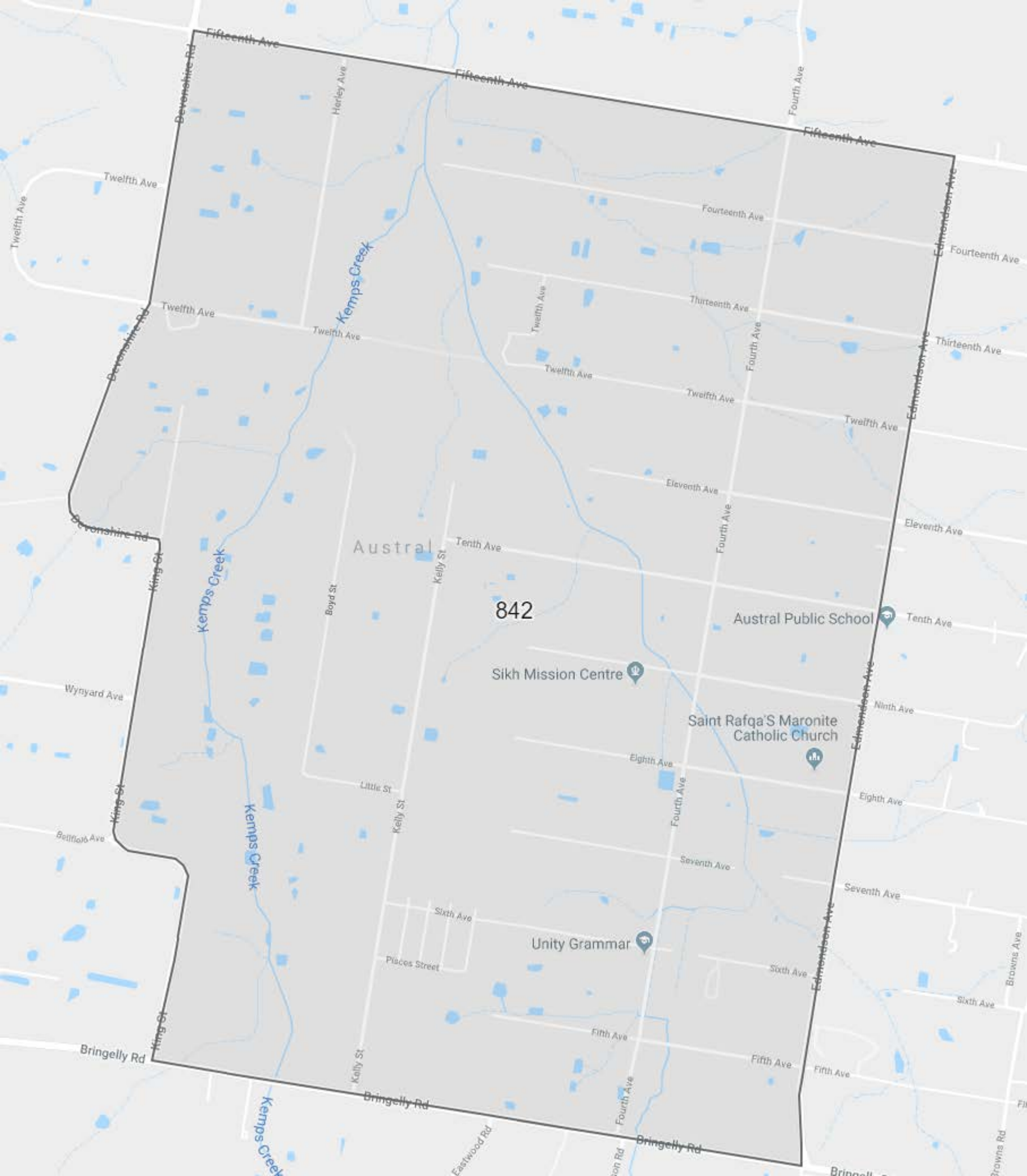
All surveys, forecasts, projections and recommendations contained in or associated with this report are made in good faith and on the basis of information supplied to Urbis at the date of this report, and upon which Urbis relied. Achievement of the projections and budgets set out in this report will depend, among other things, on the actions of others over which Urbis has no control.

In preparing this report, Urbis may rely on or refer to documents in a language other than English, which Urbis may arrange to be translated. Urbis is not responsible for the accuracy or completeness of such translations and disclaims any liability for any statement or opinion made in this report being inaccurate or incomplete arising from such translations.

Whilst Urbis has made all reasonable inquiries it believes necessary in preparing this report, it is not responsible for determining the completeness or accuracy of information provided to it. Urbis (including its officers and personnel) is not liable for any errors or omissions, including in information provided by the Instructing Party or another person or upon which Urbis relies, provided that such errors or omissions are not made by Urbis recklessly or in bad faith.

This report has been prepared with due care and diligence by Urbis and the statements and opinions given by Urbis in this report are given in good faith and in the reasonable belief that they are correct and not misleading, subject to the limitations above.

# APPENDIX A      DISTRIBUTION MAP



842

Austral

Austral Public School

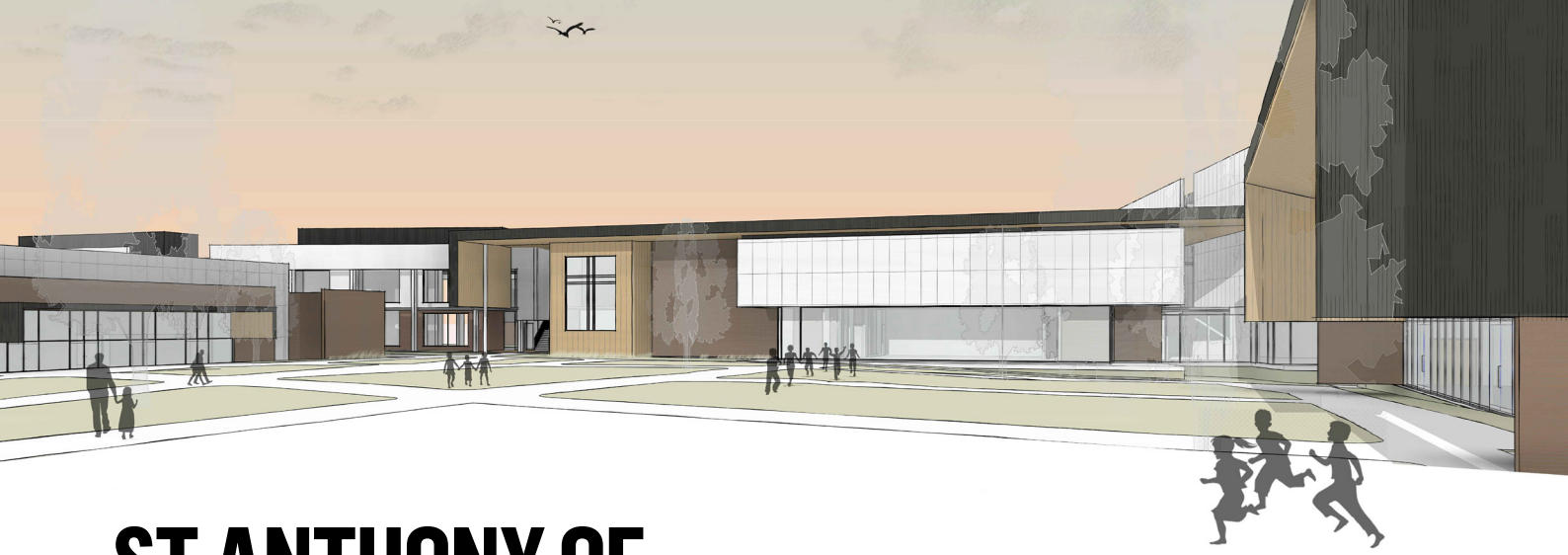
Sikh Mission Centre

Saint Rafqa's Maronite Catholic Church

Unity Grammar



## **APPENDIX B      PROJECT FACTSHEET**



# ST ANTHONY OF PADUA CATHOLIC SCHOOL

## State Significant Development Application

This newsletter has been prepared by Urbis to inform you about the proposal for the expansion of St Anthony of Padua Catholic School, located at 140 Eleventh Avenue, Austral.

Austral is a fast growing suburb in Sydney's South West Growth Area, with over 75,000 students expected to be accommodated within the growth area over the next 20 years. Investment and planning in education infrastructure is required now to meet the demands of the community now and into the future.

The proposed expansion of St Anthony of Padua Catholic School will aim to meet this demand and will be central to the future planning and sustainable growth for the new communities of Austral and its surrounds.



Aerial of existing site

## About St Anthony of Padua Catholic School

St Anthony of Padua Catholic School embraces an innovative learning model and classroom design, creating a culture of collaboration, critical thinking and adaptive learning. The school is committed to building a high quality, community campus to support the needs of both students and the surrounding local community.

The school presently accommodates 105 Kindergarten to Year 1 students, with approved works currently underway to accommodate a total of 300 students.



Examples of different learning spaces which are currently used in the school and are proposed for the future design

## The proposal

A State Significant Development Application (SSDA) is being prepared for the expansion of the school to cater for over 2,500 preschool to Year 12 students and 200 supporting staff. It is proposed Year 7 students will be accommodated in 2021, with the school anticipating to be in full operation (Preschool to Year 12) by 2026.

The school is finalising the design proposal and is committed to delivering shared facilities on site which can be used by both students and the community. Key features of the proposed design include:

### Education facilities

- Dedicated education buildings for Kindergarten to Year 12 students.
- 250 seat performing arts theatre.
- Trade Training Centre for students.
- On site long day child care centre with 125 places.

### Open space

- Over 4 hectares of open space including:
  - Sporting fields and courts
  - Market gardens
  - Areas of natural bushland preservation
  - Piazza area.

### Access and parking

- Proposed vehicle site access via Eleventh Avenue, Tenth Avenue and Fourth Avenue. The proposal will seek to widen these roads to accommodate additional traffic flow.
- Over 300 on site car spaces and 150 bicycle spaces with end of trip facilities.

## Have your say

You are invited to attend a community workshop on **Tuesday 15 May 2018** from **5:30pm to 8:30pm** at **St Anthony of Padua Catholic School, 140 Eleventh Avenue, Austral** to learn more about the proposal and to provide your ideas, feedback and vision for the school site.

There is no need to RSVP, please come along to the workshop event and learn about the plans for the school and share your ideas with the design team.

All feedback received will be used to contribute to the final planning and design of the proposal for formal submission to the Department of Planning and Environment.

### Providing feedback



As part of the planning process, Urbis has been engaged by the school to provide information and collect feedback on the proposal.

For general enquiries please contact:

**Phone** 1800 244 863

**Email** [engagement@urbis.com.au](mailto:engagement@urbis.com.au)

All feedback received will be collated in a Summary of Consultation Outcomes report to be provided to the school and the Department of Planning and Environment to inform the future planning of the site.

If you would like to learn more about enrolment for your child, please contact St Anthony of Padua Catholic School directly on (02) 9606 8600.



# APPENDIX C      FEEDBACK FORM





## ST ANTHONY OF PADUA CATHOLIC SCHOOL - FEEDBACK FORM

*Thank you for attending the community workshop. Your feedback is important to inform the future planning and final design for the proposed expansion of St Anthony of Padua Catholic School.*

**Please place completed forms in the box provided, or return your feedback via:**

E-mail: [engagement@urbis.com.au](mailto:engagement@urbis.com.au)

Post: In the Reply Paid envelope supplied OR mail to:  
Urbis  
Community Engagement Team  
201 Sussex Street  
Sydney NSW 2000

Phone: 1800 244 863

By Date: 29 May 2018

**1. How did you find out about the Community Workshop today?**

---

**2. Please indicate the answer that best describes you (please tick).**

☐ Local resident      ☐ Local business

☐ Other: \_\_\_\_\_

**3. Are you part of the school community (i.e. parent, staff member)?**

☐ Yes      ☐ No

The St Anthony of Padua Catholic School proposal aims to expand the school to cater for over 2,500 students, to help meet the rising demand for school services across the Liverpool area. The school is finalising the design proposal and is committed to delivering shared facilities on site which can be used by both the school and the wider community.

**4. Which aspects of the plan and school vision do you like the most?**

---

---

---

---

**5. Which aspects of the plan do you feel need more work to manage impacts on the community?**

---

---

---



## ST ANTHONY OF PADUA CATHOLIC SCHOOL - FEEDBACK FORM

6. What facilities would you like to see in the final design of the school?

---

---

---

---

7. Any other comments?

---

---

---

---

8. If you would like to keep up to date on the proposal, please provide your contact details below:

Name	
Email	
Phone	
Address	

Thank you for your feedback.



### **BRISBANE**

Level 7, 123 Albert Street  
Brisbane QLD 4000  
Australia  
T +61 7 3007 3800

### **MELBOURNE**

Level 12, 120 Collins Street  
Melbourne VIC 3000  
Australia  
T +61 3 8663 4888

### **PERTH**

Level 14, The Quadrant  
1 William Street  
Perth WA 6000  
Australia  
T +61 8 9346 0500

### **SYDNEY**

Level 23, Darling Park Tower 2  
201 Sussex Street  
Sydney NSW 2000  
Australia  
T +61 2 8233 9900