



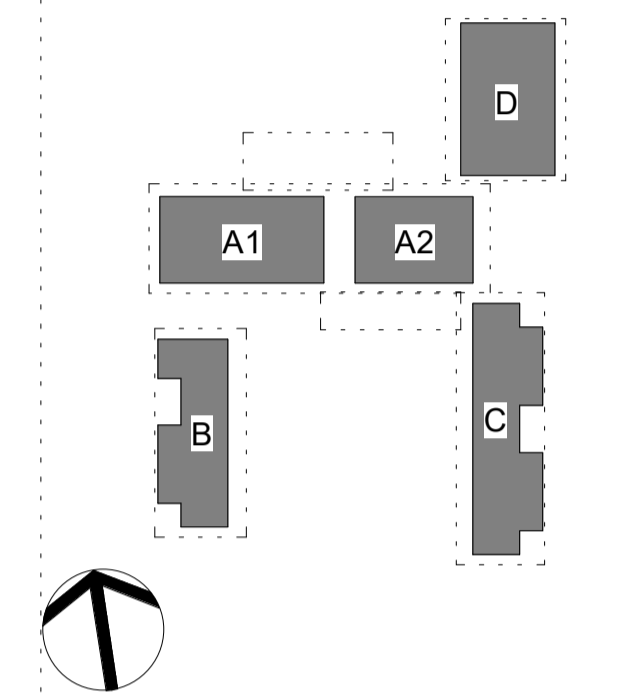
NOTE:
 BUDAWANG SCHOOL SITE ON CROOBYAR ROAD,
 MILTON SURVEYED BY PHILLIP BROWN LAND
 SURVEYORS FOR SCHOOLS INFRASTRUCTURE NSW.

INFORMATION WITHIN THIS DRAWING IS DERIVED
 FROM THE FOLLOWING DOCUMENTATION PROVIDED
 BY PHILLIP BROWN SURVEYORS DATED 10/11/2020:
 FILE: 5647CONT1DWG
 DRAWINGS: 5647.SITE1, 5647.SITE2, 5647.SITE3,
 5647.SITE4.

SITE LOCATION LEGEND

- EXISTING BUILDINGS
- NEW BUILDINGS
- EXISTING ROADS
- NEW ROADS
- NEW PATHS
- BUDAWANG SCHOOL BOUNDARY
- DOE BOUNDARY
- EXISTING TREES
- PROPOSED TREES
- EXISTING TREES OUTSIDE DOE BOUNDARY
- EXISTING SEWER EASEMENT

Issue	Description	Date
A	ISSUE FOR INFORMATION	12/03/2021
B	ISSUE FOR INFORMATION	23/03/2021
C	ISSUE FOR SSSA	08/04/2021
D	ISSUE FOR SSSA	28/07/2021
E	ISSUE FOR SSSA - TREES AMENDED	08/09/2021
F	MODIFICATION SUBMISSION	22/06/2022



DA SUBMISSION

Project Management
 SJA
 Level 1, 109 Pitt Street, NSW, 2000
 02 9236 5000

Structural and Civil
 HENRY & HYMAS (Consulting Engineers)
 Suite 2.01, 828 Pacific Highway, Gordon, NSW, 2072
 02 9417 8400

Building Services
 INTELLE BUILDING SERVICES
 Level 2, 350 Kent Street, Sydney, NSW, 2000
 02 9772 3600

BCA Consultant
 STEVE WATSON & PARTNERS
 Level 17, 456 Kent Street, Sydney, NSW, 2000
 02 9283 6555

Contractor
 ZAUNER CONSTRUCTION
 Suite 10, 132 Princes Highway, Ulladulla, NSW, 2539
 PO Box 271
 02 9283 6555

Client
 SCHOOL INFRASTRUCTURE NSW
 Level 8, 259 George Street, Sydney, NSW, 2000
 1300 482 651



Group GSA Pty Ltd ABN 76 002 113 779
 Level 7, 80 William St East Sydney NSW
 Australia 2011
 www.groupgsa.com

T +612 9361 4144 F +612 9332 3458

architecture interior design urban design landscape
 nom architect Lisa-Maree Carrigan 20773

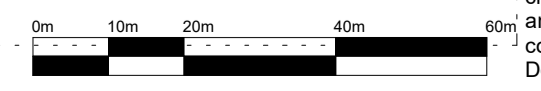
BUDAWANG SCHOOL

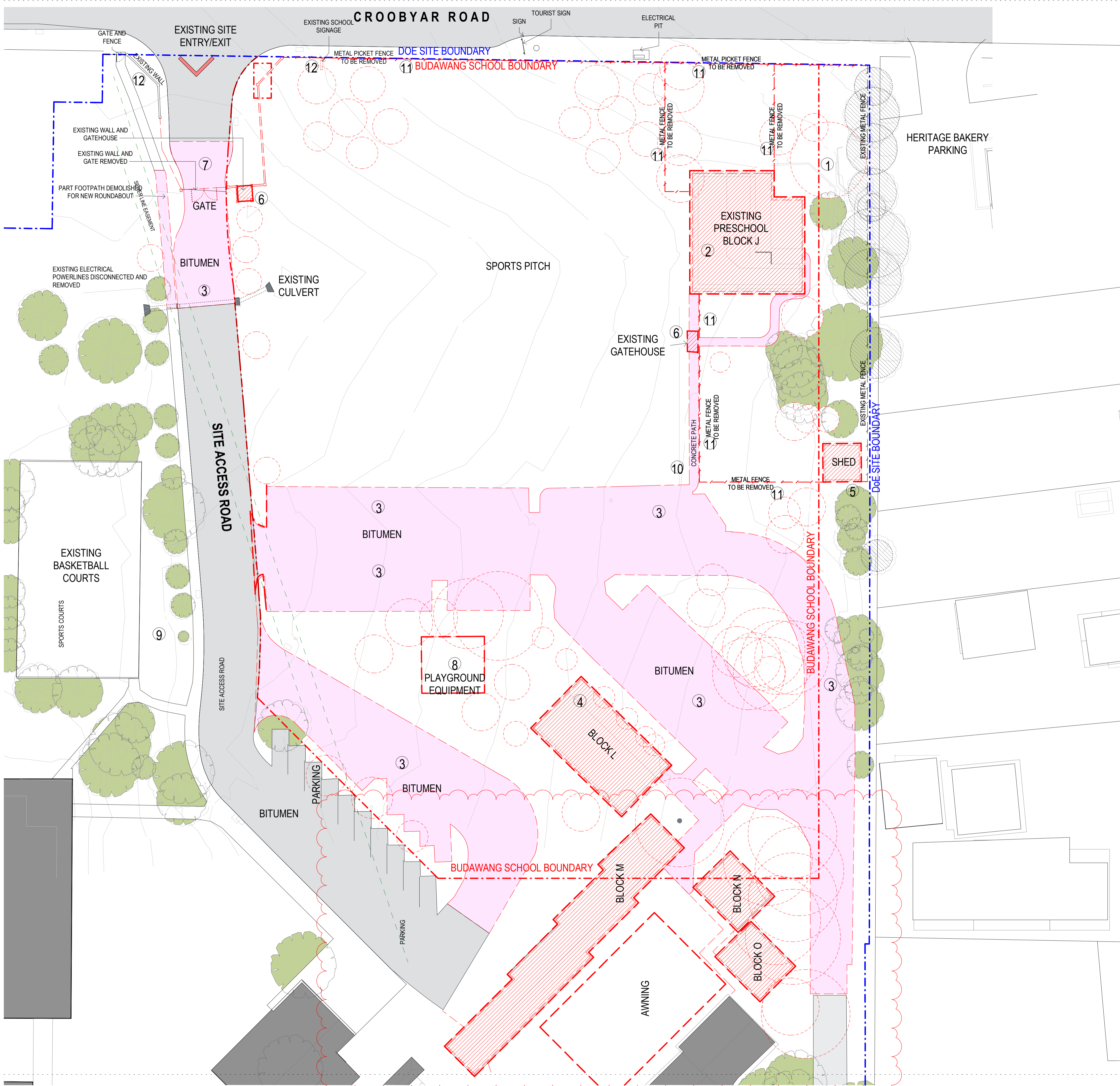
Drawing Title
SITE LOCATION PLAN

Scale	1:1000	
Drawing Created (date)		
Drawing Created (by)	CH	
Plotted and checked by	RF	
Verified	RF	
Approved	RK	
Project No	Drawing No	Issue
190941	SSDA-1110	F

This drawing is the copyright of Group GSA Pty Ltd and may not be altered, reproduced or transmitted in any form or by any means in part or in whole without the written permission of Group GSA Pty Ltd. All levels and dimensions are to be checked and verified on site prior to the commencement of any work, making of shop drawings or fabrication of components.
 Do not scale drawings. Use figured Dimensions.

1 SITE PLAN
 1:1000



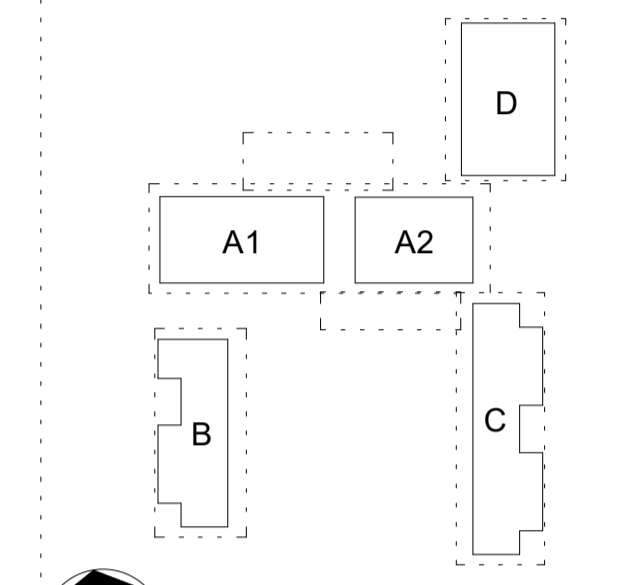


NOTE:
 BUDAWANG SCHOOL SITE ON CROOBYAR ROAD, MILTON SURVEYED BY PHILLIP BROWN LAND SURVEYORS FOR SCHOOLS INFRASTRUCTURE NSW.
 INFORMATION WITHIN THIS DRAWING IS DERIVED FROM THE FOLLOWING DOCUMENTATION PROVIDED BY PHILLIP BROWN SURVEYORS DATED 10/11/2020:
 FILE: 5647CONT1DWG
 DRAWINGS: 5647.SITE1, 5647.SITE2, 5647.SITE3, 5647.SITE4.

- LEGEND**
- BUILDINGS TO BE REMOVED
 - ROADS TO BE REMOVED
 - ITEMS TO BE REMOVED
 - TREE TO BE REMOVED
 - EXISTING BUILDING TO REMAIN
 - EXISTING ROADS TO REMAIN
 - BOUNDARY TREES TO BE PROTECTED
 - EXISTING TREES TO REMAIN
 - DoE SITE BOUNDARY
 - BUDAWANG SCHOOL BOUNDARY

- DEMOLITION NOTES**
2. Existing preschool building and verandah removed
 3. Existing bitumen road and parking removed
 4. Block L removed
 5. Shed removed
 6. Existing gatehouse and fence removed
 7. Existing wall and gate removed
 8. Existing playground and shade sail structure removed
 9. Existing pole mounted transformer disconnected and removed
 10. Existing concrete pathway removed
 11. Existing metal fences removed
 12. Existing signage removed

Issue	Description	Date
A	ISSUE FOR INFORMATION	12/03/2021
B	ISSUE FOR INFORMATION	23/03/2021
C	ISSUE FOR SSSA	08/04/2021
D	ISSUE FOR SSSA	28/07/2021
E	ISSUE FOR SSSA - TREES AMENDED	08/09/2021
F	MODIFICATION SUBMISSION	22/06/2022



DA SUBMISSION

Project Management
 SJA
 Level 1, 109 Pitt Street, NSW, 2000
 02 9236 5000

Structural and Civil
 HENRY & HYMAS (Consulting Engineers)
 Suite 2.01, 828 Pacific Highway, Gordon, NSW, 2072
 02 9417 8400

Building Services
 INTELLE BUILDING SERVICES
 Level 2, 350 Kent Street, Sydney, NSW, 2000
 02 9772 3600

BCA Consultant
 STEVE WATSON & PARTNERS
 Level 17, 456 Kent Street, Sydney, NSW, 2000
 02 9283 6555

Contractor
 ZAUNER CONSTRUCTION
 Suite 10, 132 Princes Highway, Ulladulla, NSW, 2539
 PO Box 271
 02 9283 6555

Client
 SCHOOL INFRASTRUCTURE NSW
 Level 8, 259 George Street, Sydney, NSW, 2000
 1300 482 651

GROUP GSA
 Group GSA Pty Ltd ABN 76 002 113 779
 Level 7, 80 William St East Sydney NSW
 Australia 2011
 www.groupgsa.com
 T +612 9361 4144 F +612 9332 3458
 architecture interior design urban design landscape
 nom architect Lisa-Maree Carrigan 20773
 Project Title

BUDAWANG SCHOOL

Project No	Drawing No	Issue
190941	SSDA-1120	F

This drawing is the copyright of Group GSA Pty Ltd and may not be altered, reproduced or transmitted in any form or by any means in part or in whole without the written permission of Group GSA Pty Ltd. All levels and dimensions are to be checked and verified on site prior to the commencement of any work, making of shop drawings or fabrication of components.
 Do not scale drawings. Use figured Dimensions.

23/06/2022 4:25:49 PM

CROOBYAR ROAD

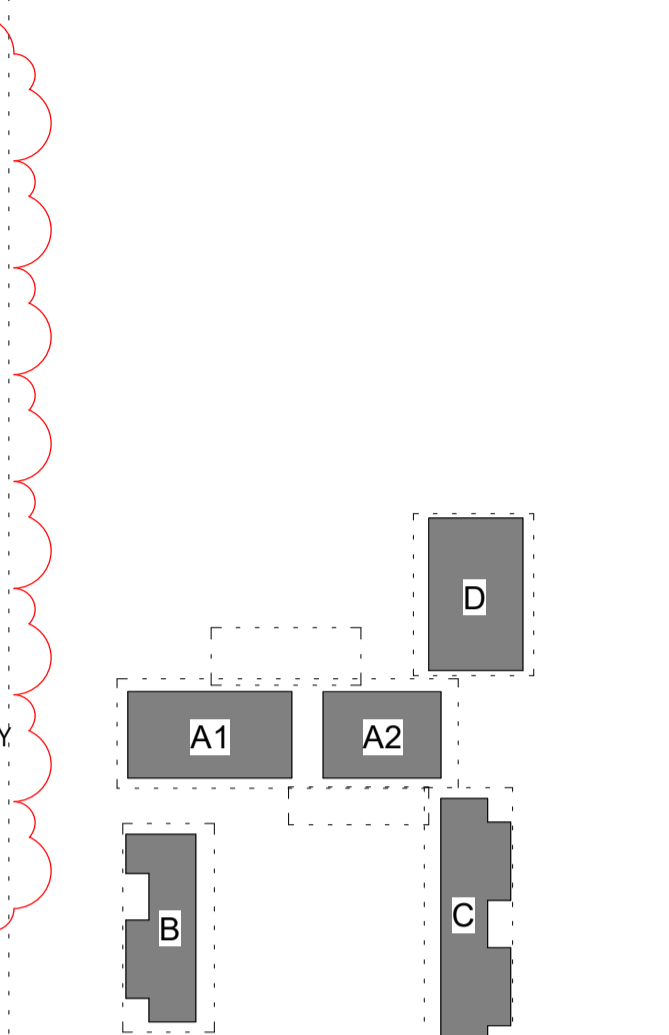


NOTE:
 BUDAWANG SCHOOL SITE ON CROOBYAR ROAD,
 MILTON SURVEYED BY PHILLIP BROWN LAND
 SURVEYORS FOR SCHOOLS INFRASTRUCTURE NSW.
 INFORMATION WITHIN THIS DRAWING IS DERIVED
 FROM THE FOLLOWING DOCUMENTATION PROVIDED
 BY PHILLIP BROWN SURVEYORS DATED 10/11/2020:
 FILE: 5647CONT1.DWG
 DRAWINGS: 5647.SITE1, 5647.SITE2, 5647.SITE3,
 5647.SITE4.

SITE LOCATION LEGEND

- EXISTING BUILDINGS
- NEW BUILDINGS
- EXISTING ROADS
- NEW ROADS
- NEW PATHS
- BUDAWANG SCHOOL BOUNDARY
- DOE BOUNDARY
- EXISTING TREES
- PROPOSED TREES
- EXISTING TREES OUTSIDE DOE BOUNDARY
- EXISTING SEWER EASEMENT

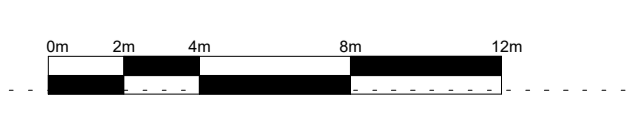
Issue	Description	Date
A	ISSUE FOR INFORMATION	12/03/2021
B	ISSUE FOR INFORMATION	23/03/2021
C	ISSUE FOR INFORMATION	25/03/2021
D	ISSUE FOR SSSA	08/04/2021
E	ISSUE FOR INFORMATION	20/07/2021
F	ISSUE FOR INFORMATION	21/07/2021
G	ISSUE FOR INFORMATION	21/07/2021
H	ISSUE FOR SSSA	28/07/2021
I	ISSUE FOR SSSA - TREES AMENDED	08/09/2021
J	MODIFICATION SUBMISSION	22/06/2022



DA SUBMISSION

Project Management	
SJA	Level 1, 109 Pitt Street, NSW, 2000 02 9236 5000
Structural and Civil	
HENRY & HYMAS (Consulting Engineers)	Suite 2.01, 828 Pacific Highway, Gordon, NSW, 2072 02 9417 8400
Building Services	
INTELLE BUILDING SERVICES	Level 2, 350 Kent Street, Sydney, NSW, 2000 02 9772 3600
BCA Consultant	
STEVE WATSON & PARTNERS	Level 17, 456 Kent Street, Sydney, NSW, 2000 02 9283 6555
Contractor	
ZAUNER CONSTRUCTION	Suite 10, 132 Princes Highway, Ulladulla, NSW, 2539 PO Box 271 02 9283 6555
Client	
SCHOOL INFRASTRUCTURE NSW	Level 8, 259 George Street, Sydney, NSW, 2000 1300 482 651
GROUP GSA	
Group GSA Pty Ltd ABN 76 002 113 779 Level 7, 80 William St East Sydney NSW Australia 2011 www.groupgsa.com T +612 9361 4144 F +612 9332 3458 architecture interior design urban design landscape nom architect Lisa-Maree Carrigan 20773 Project Title	
BUDAWANG SCHOOL	
Drawing Title	
SITE PLAN	
Scale	1 : 250
Drawing Created (date)	02/24/21
Drawing Created (by)	TKD
Plotted and checked by	RF
Verified	RF
Approved	RK
Project No	Drawing No
190941	SSDA-2000
	J

This drawing is the copyright of Group GSA Pty Ltd and may not be altered, reproduced or transmitted in any form or by any means in part or in whole without the written permission of Group GSA Pty Ltd. All levels and dimensions are to be checked and verified on site prior to the commencement of any work, making of shop drawings or fabrication of components.
 Do not scale drawings. Use figured Dimensions.

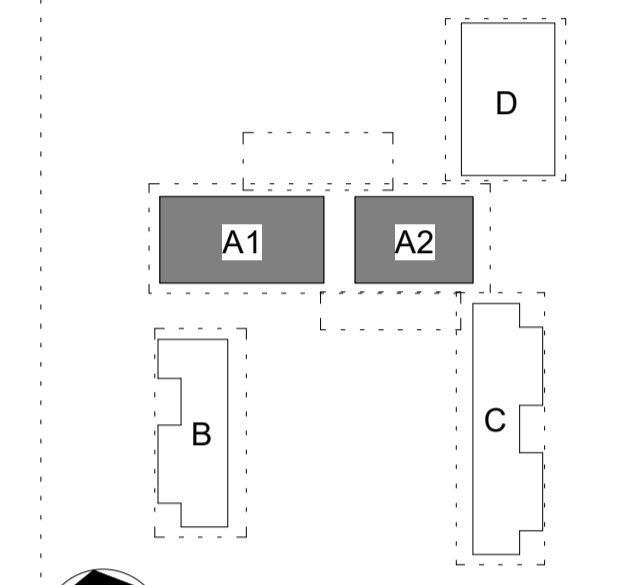
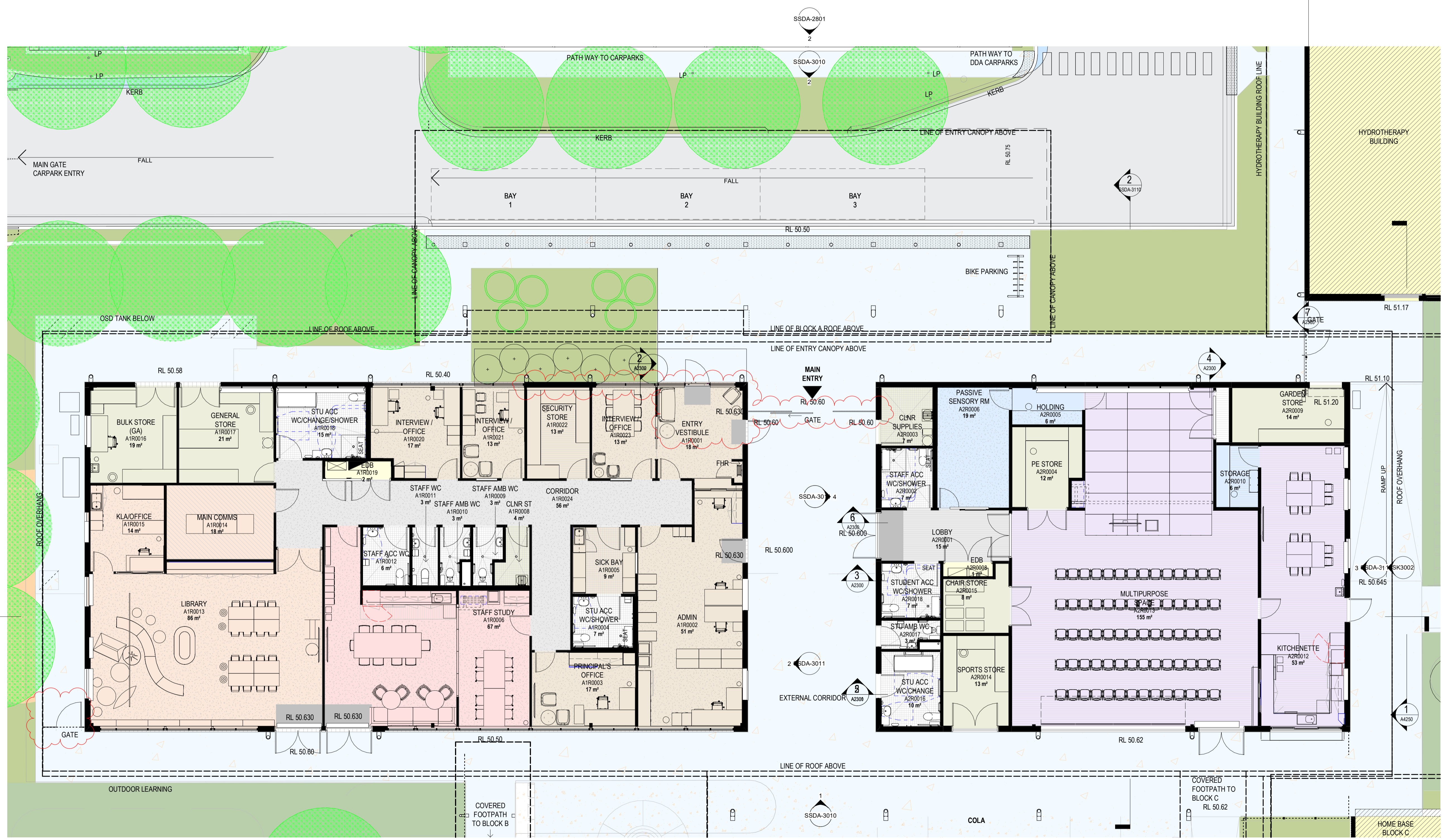


30/09/2022 5:11:27 PM

Issue	Description	Date
A	ISSUE FOR INFORMATION	04/12/2020
B	ISSUE FOR INFORMATION	12/03/2021
C	ISSUE FOR INFORMATION	23/03/2021
D	ISSUE FOR SDA	08/04/2021
E	ISSUE FOR SDA	28/07/2021
F	ISSUE FOR SDA - TREES AMENDED	08/09/2021
G	MODIFICATION SUBMISSION	22/06/2022

LEGEND

- BUDAWANG SCHOOL BOUNDARY
- DOE OWNERSHIP
- EXISTING SEWERLINE



DA SUBMISSION

Project Management
 SJA
 Level 1, 109 Pitt Street, NSW, 2000
 02 9236 5000

Structural and Civil
 HENRY & HYMAS (Consulting Engineers)
 Suite 2.01, 828 Pacific Highway, Gordon, NSW, 2072
 02 9417 8400

Building Services
 INTELLE BUILDING SERVICES
 Level 2, 350 Kent Street, Sydney, NSW, 2000
 02 9772 3600

BCA Consultant
 STEVE WATSON & PARTNERS
 Level 17, 456 Kent Street, Sydney, NSW, 2000
 02 9283 6555

Contractor
 ZAUNER CONSTRUCTION
 Suite 10, 132 Princes Highway, Ulladulla, NSW, 2539
 PO Box 271
 02 9283 6555

Client
 SCHOOL INFRASTRUCTURE NSW
 Level 8, 259 George Street, Sydney, NSW, 2000
 1300 482 651

GROUP GSA
 Group GSA Pty Ltd ABN 76 002 113 779
 Australia 2011
 www.groupgsa.com
 T +612 9361 4144 F +612 9332 3458
 architecture interior design urban design landscape
 nom architect Lisa-Maree Carrigan 20773
 Project Title

BUDAWANG SCHOOL

BLOCK A PLAN

Drawing Title

Scale 1:100

Drawing Created (date)

Drawing Created (by) TKD

Plotted and checked by RF

Verified RF

Approved RK

Project No Drawing No Issue

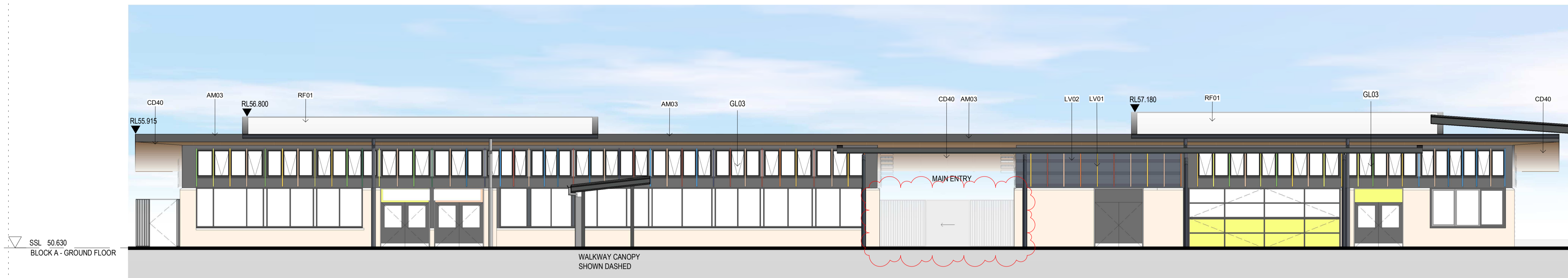
190941 SDA-2001 G

1 BLOCK A PLAN SSD
 1:100

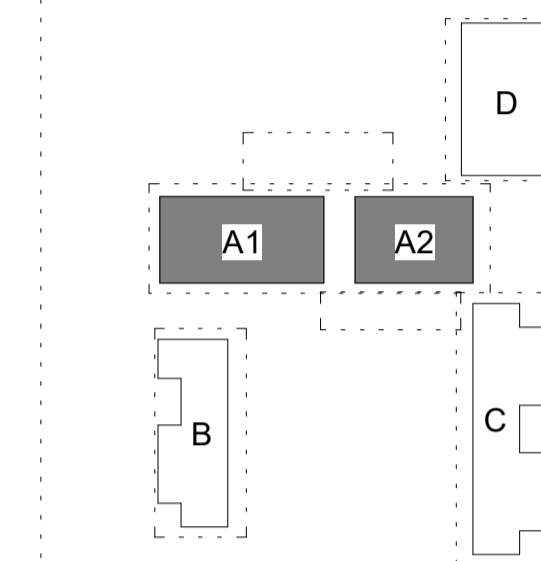


This drawing is the copyright of Group GSA Pty Ltd and may not be altered, reproduced or transmitted in any form or by any means in part or in whole without the written permission of Group GSA Pty Ltd. All levels and dimensions are to be checked and verified on site prior to the commencement of any work, making of shop drawings or fabrication of components.
 Do not scale drawings. Use figured Dimensions.

Issue	Description	Date
A	ISSUE FOR INFORMATION	26/11/2020
B	ISSUE FOR INFORMATION	03/12/2020
C	ISSUE FOR INFORMATION	04/12/2020
D	ISSUE FOR INFORMATION	12/03/2021
E	ISSUE FOR INFORMATION	22/03/2021
F	ISSUE FOR SDA	08/04/2021
G	MODIFICATION SUBMISSION	22/06/2022



1 BLOCK A1/A2 SOUTH ELEVATION.
1:100



DA SUBMISSION

- Project Management**
SJA
Level 1, 109 Pitt Street, NSW, 2000
02 9236 5000
- Structural and Civil**
HENRY & HYMAS (Consulting Engineers)
Suite 2.01, 828 Pacific Highway, Gordon, NSW, 2072
02 9417 8400
- Building Services**
INTELLE BUILDING SERVICES
Level 2, 350 Kent Street, Sydney, NSW, 2000
02 9772 3600
- BCA Consultant**
STEVE WATSON & PARTNERS
Level 17, 456 Kent Street, Sydney, NSW, 2000
02 9283 6555
- Contractor**
ZAUNER CONSTRUCTION
Suite 10, 132 Princes Highway, Ulladulla, NSW, 2539
PO Box 271
02 9283 6555
- Client**
SCHOOL INFRASTRUCTURE NSW
Level 8, 259 George Street, Sydney, NSW, 2000
1300 482 651

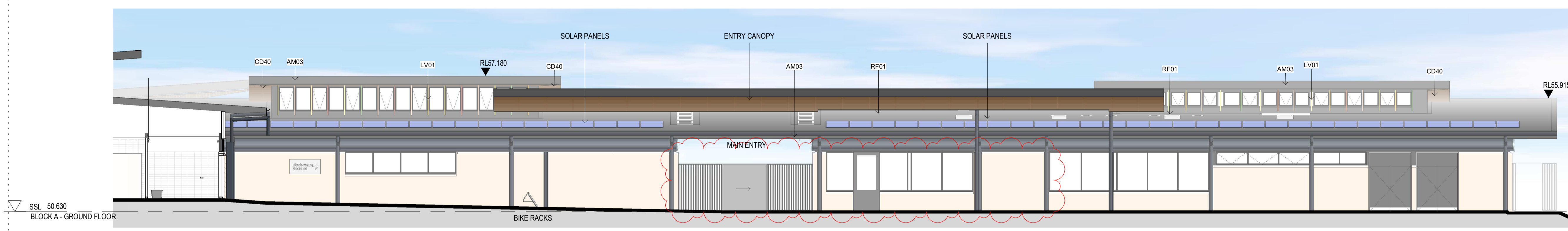
SCHOOL INFRASTRUCTURE NSW
Level 8, 259 George Street, Sydney, NSW, 2000
1300 482 651

GROUP GSA
Group GSA Pty Ltd ABN 76 002 113 779
Level 7, 80 William St East Sydney NSW
Australia 2011
www.groupgsa.com
T +612 9361 4144 F +612 9332 3458
architecture interior design urban design landscape
nom architect Lisa-Maree Carrigan 20773
Project Title

BUDAWANG SCHOOL

BLOCK A ELEVATIONS SHEET 01

Drawing Title	BLOCK A ELEVATIONS SHEET 01	
Scale	1:100	
Drawing Created (date)		
Drawing Created (by)	TKD	
Plotted and checked by	RF	
Verified	RF	
Approved	RK	
Project No	Drawing No	Issue
190941	SSDA-3010	G



2 BLOCK A1/A2 NORTH ELEVATION.
1:100



This drawing is the copyright of Group GSA Pty Ltd and may not be altered, reproduced or transmitted in any form or by any means in part or in whole without the written permission of Group GSA Pty Ltd. All levels and dimensions are to be checked and verified on site prior to the commencement of any work, making of shop drawings or fabrication of components.
Do not scale drawings. Use figured Dimensions.

30/09/2022 5:13:30 PM