

NOTE:

TREES NOT SURVEYED BUT ASSESSED IN THE ARBORIST REPORT HAVE BEEN INCLUDED ON THE TREE MANAGEMENT PLAN FOR INFORMATION. THE CONTRACTOR IS TO VERIFY ALL LOCATIONS OF TREES TO BE RETAINED (SURVEYED & NOT SURVEYED)



| Amendments | | |
|------------|-----------------------|------------|
| Issue | Description | Date |
| A | ISSUE FOR INFORMATION | 10/12/2020 |
| B | ISSUE FOR INFORMATION | 01/02/2021 |
| C | ISSUE FOR INFORMATION | 08/03/2021 |
| D | ISSUE FOR INFORMATION | 18/03/2021 |
| E | ISSUE FOR INFORMATION | 31/03/2021 |
| F | ISSUE FOR SSDA | 13/04/2021 |

LEGEND

- TREES TO BE RETAINED (SURVEYED)
- TREES TO BE RETAINED (NOT SURVEYED)
- TREES TO BE RETAINED (NOT ASSESSED)
- TREES TO BE REMOVED (SURVEYED)
- TREES OUTSIDE OF BOUNDARY
- TREES PROTECTION ZONE (TPZ) REFER TO ARBORIST REPORT
- STRUCTURAL ROOT ZONE (SRZ) REFER TO ARBORIST REPORT
- SITE BOUNDARY

Project Management
SJA
Level 1, 109 Pitt Street, NSW, 2000
02 9226 5000

Structural and Civil
HENRY & HYMAS
Suite 2.01, 628 Pacific Highway, Gordon, NSW, 2072
02 9417 8600

Building Services
INTELLE BUILDING SERVICES
Level 2, 100 Kent Street, Sydney, NSW, 2000
02 9772 3600

BCA Consultant
STEVE WATSON & PARTNERS
Level 17, 456 Kent Street, Sydney, NSW, 2000
02 9263 6555

Client
SCHOOL INFRASTRUCTURE NSW
Level 8, 250 George Street, Sydney, NSW, 2000
1300 462 051



GROUP GSA

Group GSA Pty Ltd ABN 76 002 113 779
Level 7, 80 William St East Sydney NSW
Australia 2011 www.groupgsa.com

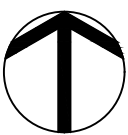
T +612 9361 4144 F +612 9332 3458
architecture interior design urban design landscape
nom architect M. Sheldon 3990

Project Title
BUDAWANG SCHOOL

Drawing Title
TREE MANAGEMENT PLAN

| | |
|------------------------|------------|
| Scale | 1:250 @A1 |
| Drawing created (date) | 13/04/2021 |
| By | LG |
| Plotted and checked by | LG |
| Verified | FR |
| Approved | FR |
| Drawing No | Issue |
| 190941 | L-0002 F |

This drawing is the copyright of Group GSA Pty Ltd and may not be altered, reproduced or transmitted in any form or by any means in part or in whole without the written permission of Group GSA Pty Ltd. All levels and dimensions are to be checked and verified on site prior to the commencement of any work, making of shop drawings or fabrication of components. Do not scale drawings. Use figured Dimensions.





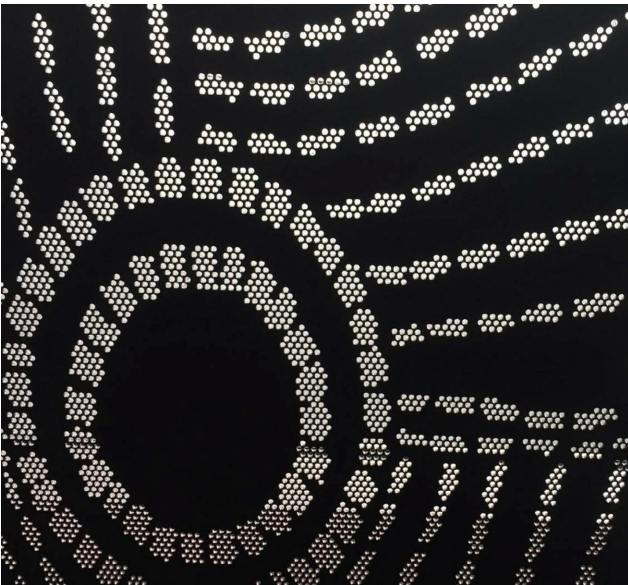
AM80 - Palisade fence to school boundary. This will be softened with planting when located along a visible boundary



AM83 - Mesh fencing to hombase outdoor learning areas



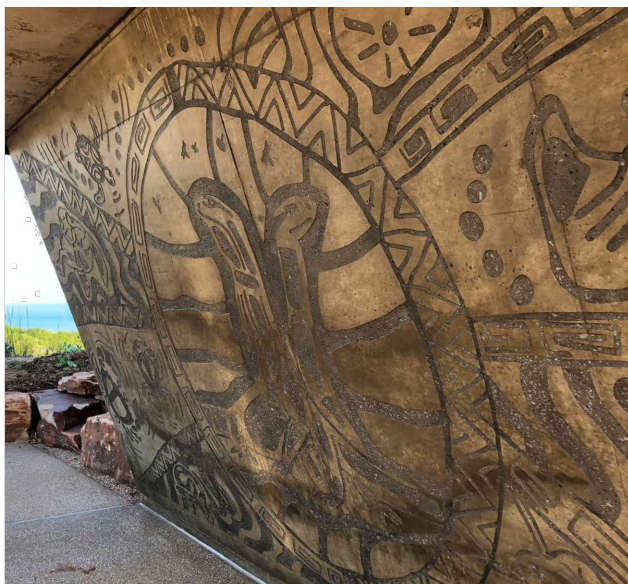
AM82 - Boundary fencing used where more privacy is required. Colour will be "Monument"



AM84 - Example of community artwork within perforated metal
<https://www.mudmapstudio.com/projects>

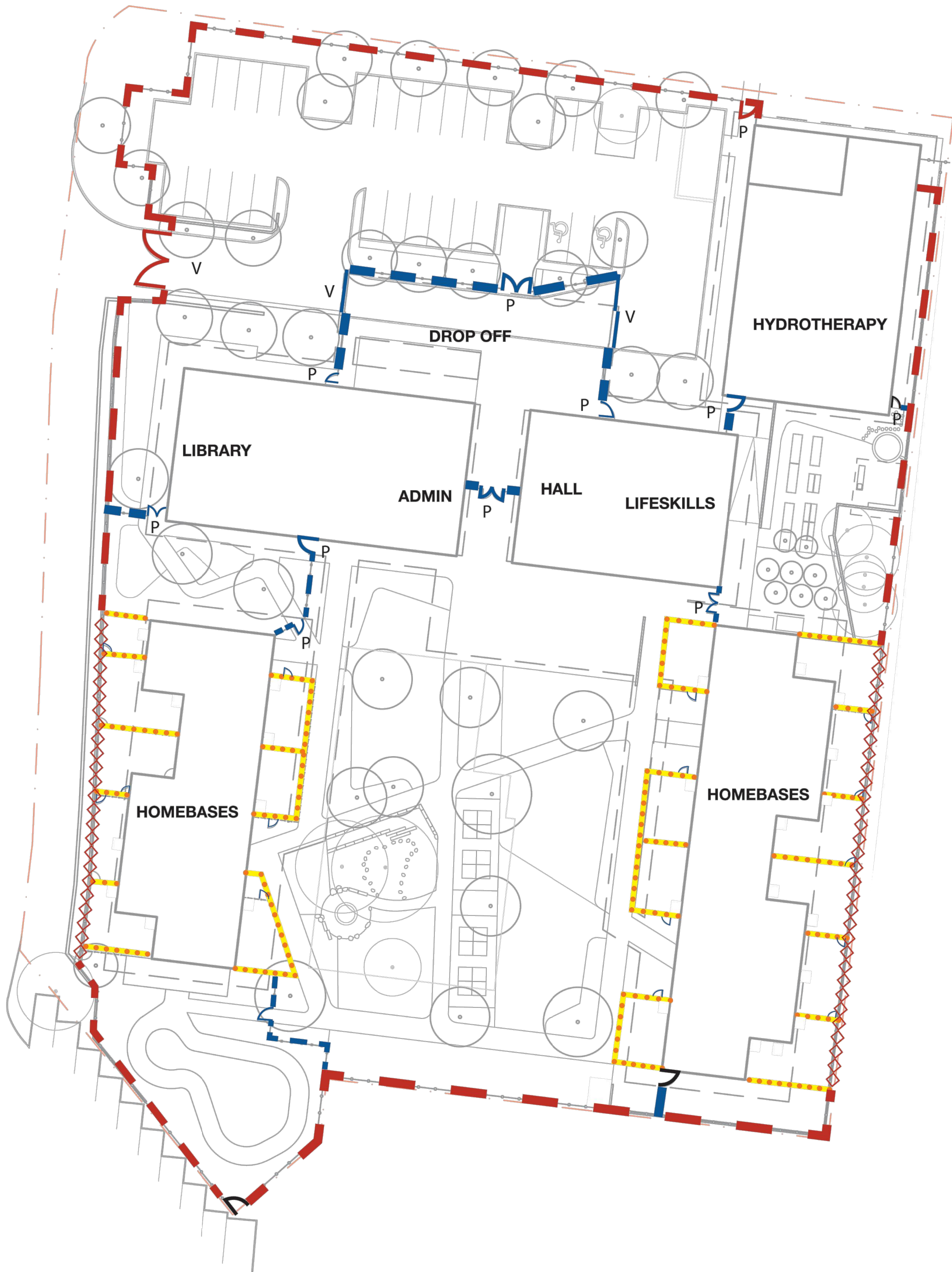


Sandstone logs suggested to create terraced retaining walls along western boundary



Example of community artwork within concrete
<https://www.mudmapstudio.com/projects>

- AM80 - BOUNDARY FENCE (2150MM HIGH SCHOOL PALISADE FENCE) - FLAT TOP
- AM82 - BOUNDARY FENCE WITH VISUAL SCREENING
- VEHICULAR ACCESS GATE - SWING
- VEHICULAR ACCESS GATE - SLIDE
- AM84 - PEDESTRIAN ACCESS
- AM80 - SECONDARY FENCE AND GATES
- AM83 - SECURE FENCE TO OUTDOOR LEARNING SPACE
- MAINTENANCE ACCESS AND GATES



Project Management
SJA
Level 1, 109 Pitt Street, NSW, 2000
02 9226 5000

Structural and Civil
HENRY & HYMAS
Suite 2.01, 628 Pacific Highway, Gordon, NSW, 2072
02 9417 8600

Building Services
INTELLE BUILDING SERVICES
Level 2, 100 Kent Street, Sydney, NSW, 2000
02 9772 3600

BCA Consultant
STEVE WATSON & PARTNERS
Level 17, 456 Kent Street, Sydney, NSW, 2000
02 9263 6555

Client
SCHOOL INFRASTRUCTURE NSW
Level 8, 250 George Street, Sydney, NSW, 2000
1300 462 051

SCHOOL INFRASTRUCTURE NSW

GROUP GSA

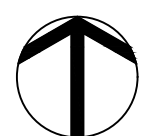
Group GSA Pty Ltd ABN 76 002 113 779
Level 7, 80 William St East Sydney NSW
Australia 2011 www.groupgsa.com
T +612 9361 4144 F +612 9332 3458
architecture interior design urban design landscape
nom architect M. Sheldon 3990

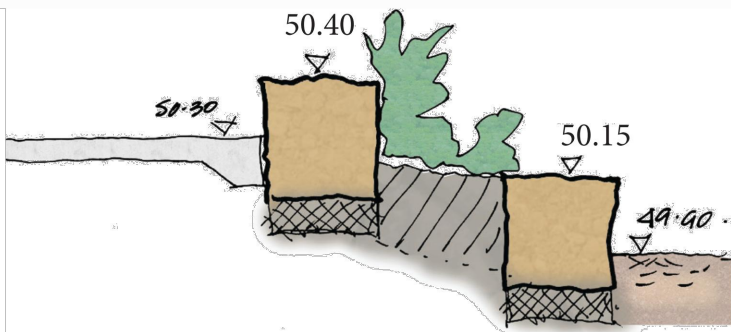
Project Title
BUDAWANG SCHOOL

Drawing Title
SITE PLAN - FENCING

Scale 1:250 @A1
Drawing created (date) 13/04/2021
By LG
Plotted and checked by LG
Verified FR
Approved FR
Drawing No Issue
190941 L-2002 A

This drawing is the copyright of Group GSA Pty Ltd and may not be altered, reproduced or transmitted in any form or by any means in part or in whole without the written permission of Group GSA Pty Ltd.
All levels and dimensions are to be checked and verified on site prior to the commencement of any work, making of shop drawings or fabrication of components.
Do not scale drawings. Use figured Dimensions.





BUSH GARDEN

- LEGEND
1. EXISTING TREES
 2. ACCESS PATH
 3. DECK AND STEP ACCESS
 4. SANDSTONE KERB AND RETAINING WALL TO GARDEN
 5. SOFT FALL MULCH AND STEPPERS
 6. YARNING CIRCLE
 7. TO FUTURE PLAN DESIGN
 8. GARDEN BED



SENSORY PLAYGROUND

- LEGEND
1. BOUNDARY FENCE
 2. INTERNAL FENCE AND SERVICE GATE ACCESS
 3. SENSORY PLANTING - FOCUS ON COLOUR, TEXTURE AND SCENT
 4. SHADE TREES WITH SEATING UNDER
 5. SWALE - GROUNDCOVER PLANTING
 6. OPPORTUNITIES FOR SENSORY PLAY ITEMS
 7. CONNECTION TO LIBRARY
 8. ROOF OVERHEAD
 9. TIERED RETAINING WALL WITH PLANTING
 10. OUTDOOR STAFF SPACE

| |
|--|
| Project Management |
| SJA Level 1, 109 Pitt Street, NSW, 2000 02 9226 5800 |
| Structural and Civil |
| HENRY & HYMAS Suite 2.01, 628 Pacific Highway, Gordon, NSW, 2072 02 9417 8600 |
| Building Services |
| INTELLE BUILDING SERVICES Level 2, 100 Kent Street, Sydney, NSW, 2000 02 9772 3600 |
| BCA Consultant |
| STEVE WATSON & PARTNERS Level 17, 455 Kent Street, Sydney, NSW, 2000 02 9263 6555 |
| Client |
| SCHOOL INFRASTRUCTURE NSW Level 8, 250 George Street, Sydney, NSW, 2000 1300 462 001 |

GROUP GSA

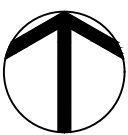
Group GSA Pty Ltd ABN 76 002 113 779
Level 7, 80 William St East Sydney NSW
Australia 2011 www.groupgsa.com

T +612 9361 4144 F +612 9332 3458
architecture interior design urban design landscape
nom architect M. Sheldon 3990

Project Title
BUDAWANG SCHOOL

| | |
|------------------------|------------|
| Drawing Title | |
| DETAILED PLANS | |
| Scale | 1:100 @A1 |
| Drawing created (date) | 13/04/2021 |
| By | LG |
| Plotted and checked by | LG |
| Verified | FR |
| Approved | FR |
| Drawing No | Issue |
| 190941 L-2101 | A |

This drawing is the copyright of Group GSA Pty Ltd and may not be altered, reproduced or transmitted in any form or by any means in part or in whole without the written permission of Group GSA Pty Ltd. All levels and dimensions are to be checked and verified on site prior to the commencement of any work, making of shop drawings or fabrication of components. Do not scale drawings. Use figured Dimensions.





BIKE TRACK

LEGEND

1. TURF SPACE IN CENTRE OF BIKE TRACK - INFORMAL VIEWING
2. BIKE TRACK
3. PROPOSED RETAINING WALL
4. EXISTING TREE TO BE RETAINED WITH GROUNDCOVERS UNDER
5. SCREEN PLANTING TO BOUNDARY FENCE
6. INTERNAL FENCING AND GATE
7. GROUND COVER PLANTING TO GENTLE SLOPE
8. BOUNDARY FENCE
9. BIKE STORAGE
10. TURF SPILL-OUT AREA FOR BIKES/WAITING ZONE



PRODUCTIVE GARDEN

LEGEND

1. GARDEN BED - FOCUS ON PRODUCTIVE PLANTS, MEDICINAL HERBS AND BUSH TUCKER
2. PERGOLA FOR SHADE INCLUDING VINE COVERED SECTION - GRAPES, SEATING AND OUTDOOR BENCH IN SPACE
3. ROUND GALVANISED WATER TANK WITH TAP FOR WATERING GARDEN
4. TURF
5. SMALL ORCHARD TREES IN MULCH RINGS
6. RAISED GARDENS BEDS FOR FOOD GROWING
7. EXISTING TREES TO BE RETAINED
8. RETAINING WALL WITH SEATING ATTACHED
9. CONNECTION TO LIFE SKILLS/INDOOR KITCHEN AREA
10. STEPPERS THROUGH GARDEN FOR SERVICE ACCESS ONLY
11. SERVICE GATE AND FENCING TO REAR OF HYDROTHERAPY BUILDING
12. CLOTHESLINE
13. CHICKEN COOP-MOBILE

| |
|--|
| Project Management |
| SJA Level 1, 109 Pitt Street, NSW, 2000 02 9226 5000 |
| Structural and Civil |
| HENRY & HYMAS Suite 2.01, 628 Pacific Highway, Gordon, NSW, 2072 02 9417 8600 |
| Building Services |
| INTELLE BUILDING SERVICES Level 2, 100 Kent Street, Sydney, NSW, 2000 02 9772 3600 |
| BCA Consultant |
| STEVE WATSON & PARTNERS Level 17, 455 Kent Street, Sydney, NSW, 2000 02 9263 6555 |
| Client |
| SCHOOL INFRASTRUCTURE NSW Level 8, 250 George Street, Sydney, NSW, 2000 1300 462 001 |



GROUP GSA

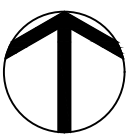
Group GSA Pty Ltd ABN 76 002 113 779
Level 7, 80 William St East Sydney NSW
Australia 2011 www.groupgsa.com
T +612 9361 4144 F +612 9332 3458
architecture interior design urban design landscape
nom architect M. Sheldon 3990

Project Title
BUDAWANG SCHOOL

Drawing Title
DETAILED PLANS

| | |
|------------------------|------------|
| Scale | 1:100 @A1 |
| Drawing created (date) | 13/04/2021 |
| By | LG |
| Plotted and checked by | LG |
| Verified | FR |
| Approved | FR |
| Drawing No | 190941 |
| Issue | L-2102 A |

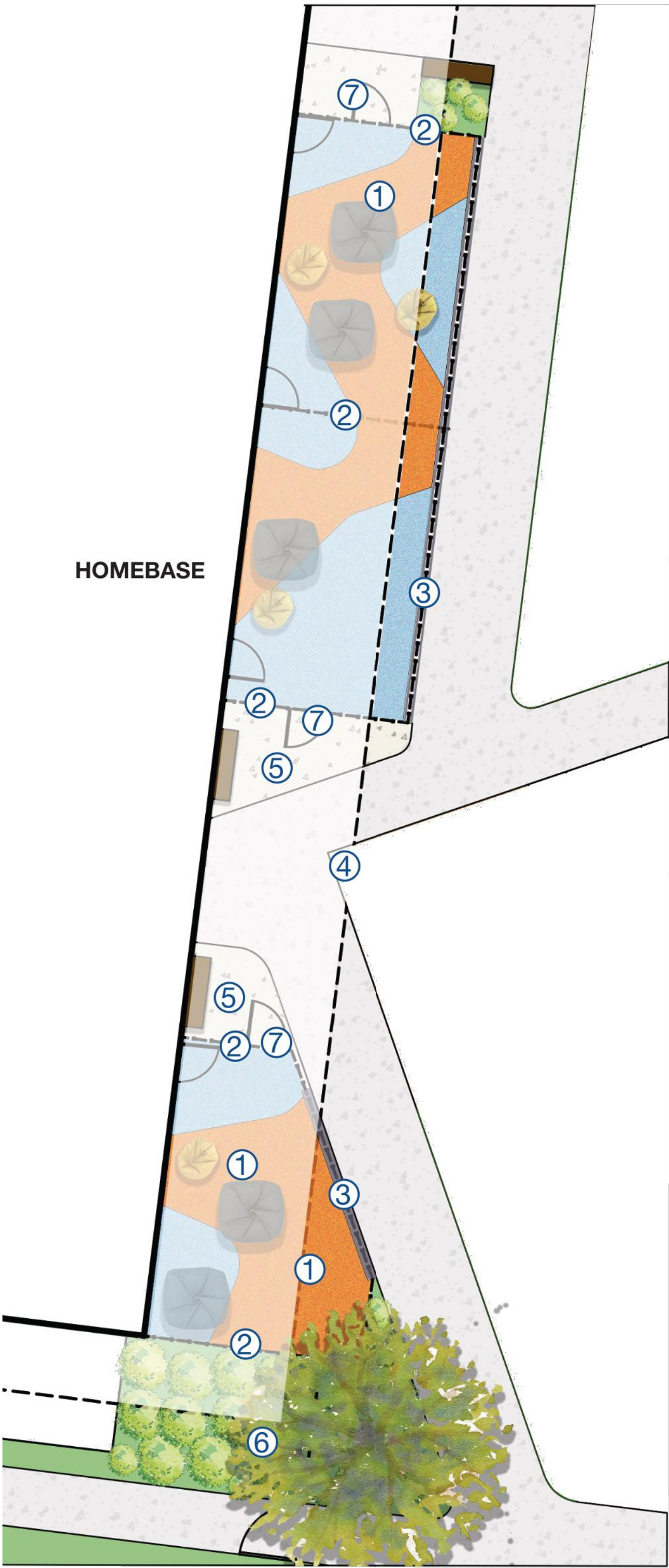
This drawing is the copyright of Group GSA Pty Ltd and may not be altered, reproduced or transmitted in any form or by any means in part or in whole without the written permission of Group GSA Pty Ltd. All levels and dimensions are to be checked and verified on site prior to the commencement of any work, making of shop drawings or fabrication of components. Do not scale drawings. Use figured Dimensions.



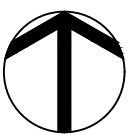
OUTDOOR LEARNING AREAS ADJACENT TO HOMEBASES

LEGEND

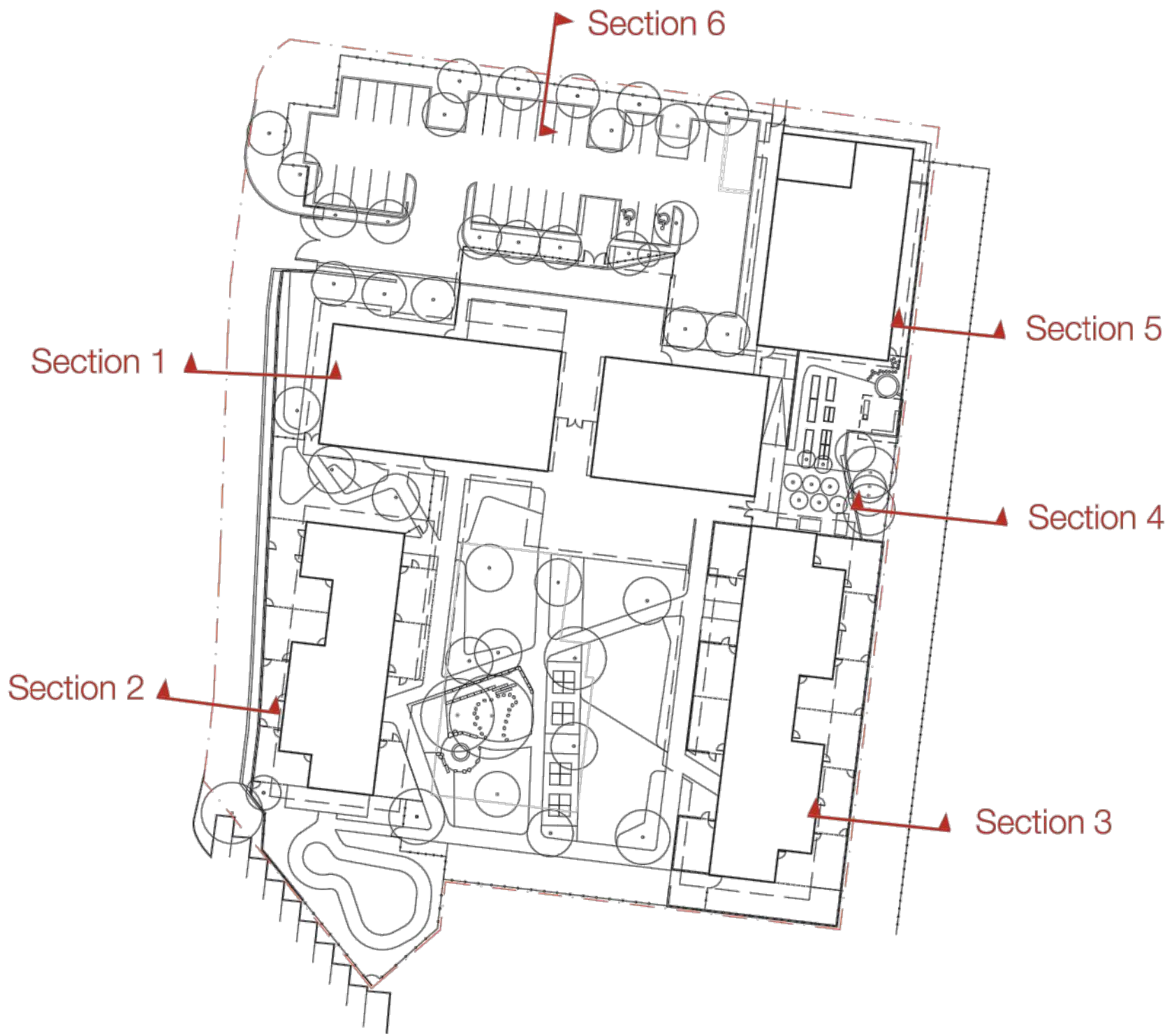
- 1. SPACE INCLUDES PATTERNED RUBBER SOFT FALL SURFACE AND SOFT, WEATHERPROOF FURNISHING FOR CASUAL SEATING (EG. BEANBAGS)
- 2. FENCING TO OUTDOOR LEARNING SPACE - SECURIFOR MESH FENCE 2150MM HIGH
- 3. CONCRETE PLINTH WITH FENCING FOR SEATING (400MM NOM. HEIGHT)
- 4. ROOF OVER
- 5. ENTRY ZONE - PAUSE SPACES WITH SEATING AND BLACKBOARDS UNDER COVER FOR ACTIVATION
- 6. SCREEN PLANTING TO FENCING ALONG OUTDOOR LEARNING SPACES WHERE POSSIBLE TO INCREASE SENSE OF ENCLOSURE AND MAINTAIN PRIVACY
- 7. GATE



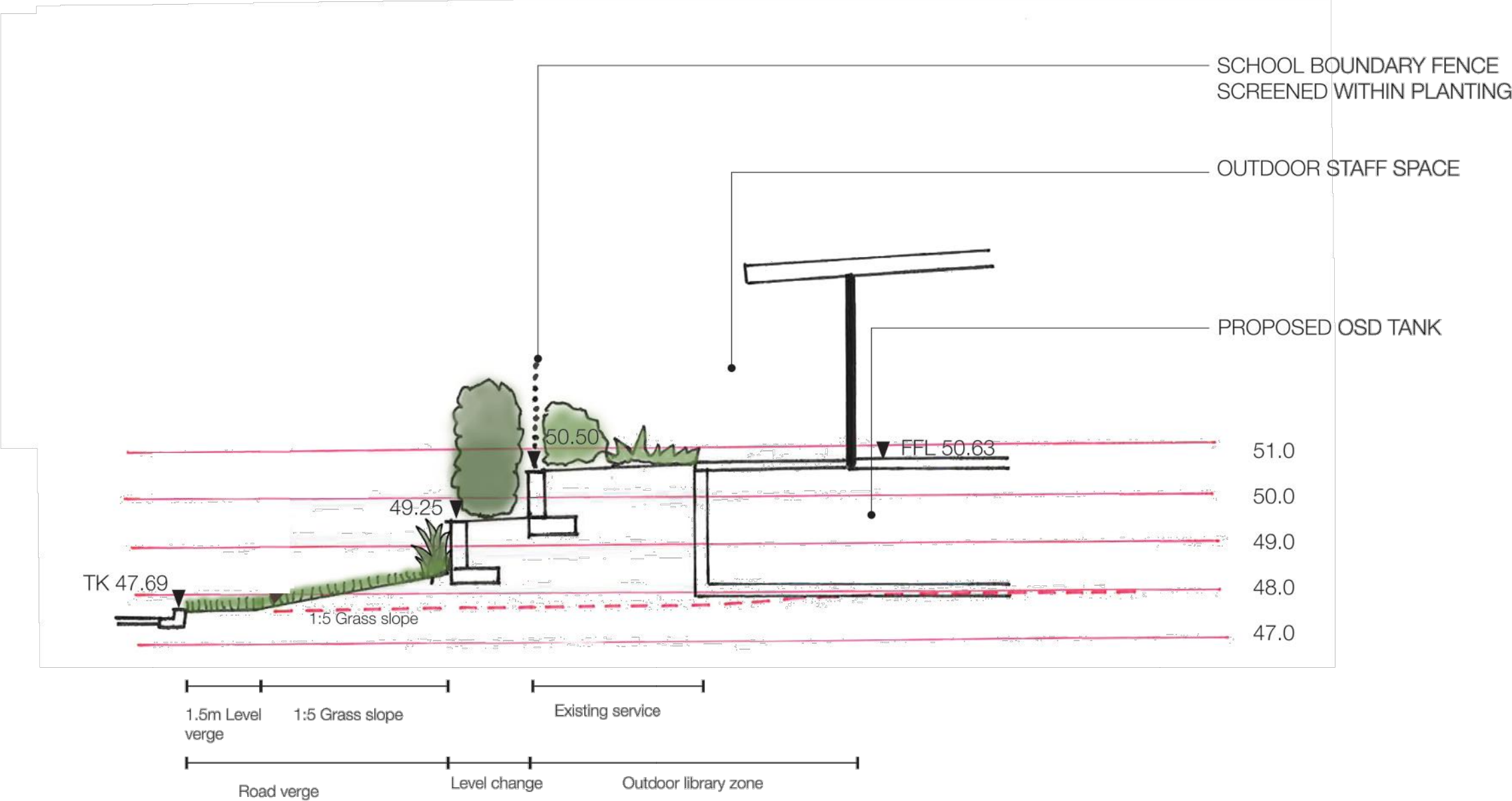
| | |
|------------------------|---|
| Project Management | SJA Level 1, 109 Pitt Street, NSW, 2000 02 9226 5000 |
| Structural and Civil | HENRY & HYMAS Suite 2 01, 628 Pacific Highway, Gordon, NSW, 2072 02 9417 8600 |
| Building Services | INTELLE BUILDING SERVICES Level 2, 100 Kent Street, Sydney, NSW, 2000 02 9772 3600 |
| BCA Consultant | STEVE WATSON & PARTNERS Level 17, 456 Kent Street, Sydney, NSW, 2000 02 9263 6555 |
| Client | SCHOOL INFRASTRUCTURE NSW Level 8, 250 George Street, Sydney, NSW, 2000 1300 462 051  |
| Project Title | GROUP GSA Group GSA Pty Ltd ABN 76 002 113 779 Level 7, 80 William St East Sydney NSW Australia 2011 www.groupgsa.com T +612 9361 4144 F +612 9332 3458 architecture interior design urban design landscape nom architect M. Sheldon 3990 |
| Drawing Title | BUDAWANG SCHOOL |
| Scale | 1:100 @A1 |
| Drawing created (date) | 13/04/2021 |
| By | LG |
| Plotted and checked by | LG |
| Verified | FR |
| Approved | FR |
| Drawing No | 190941 |
| Issue | L-2103 A |



BOUNDARY TREATMENTS



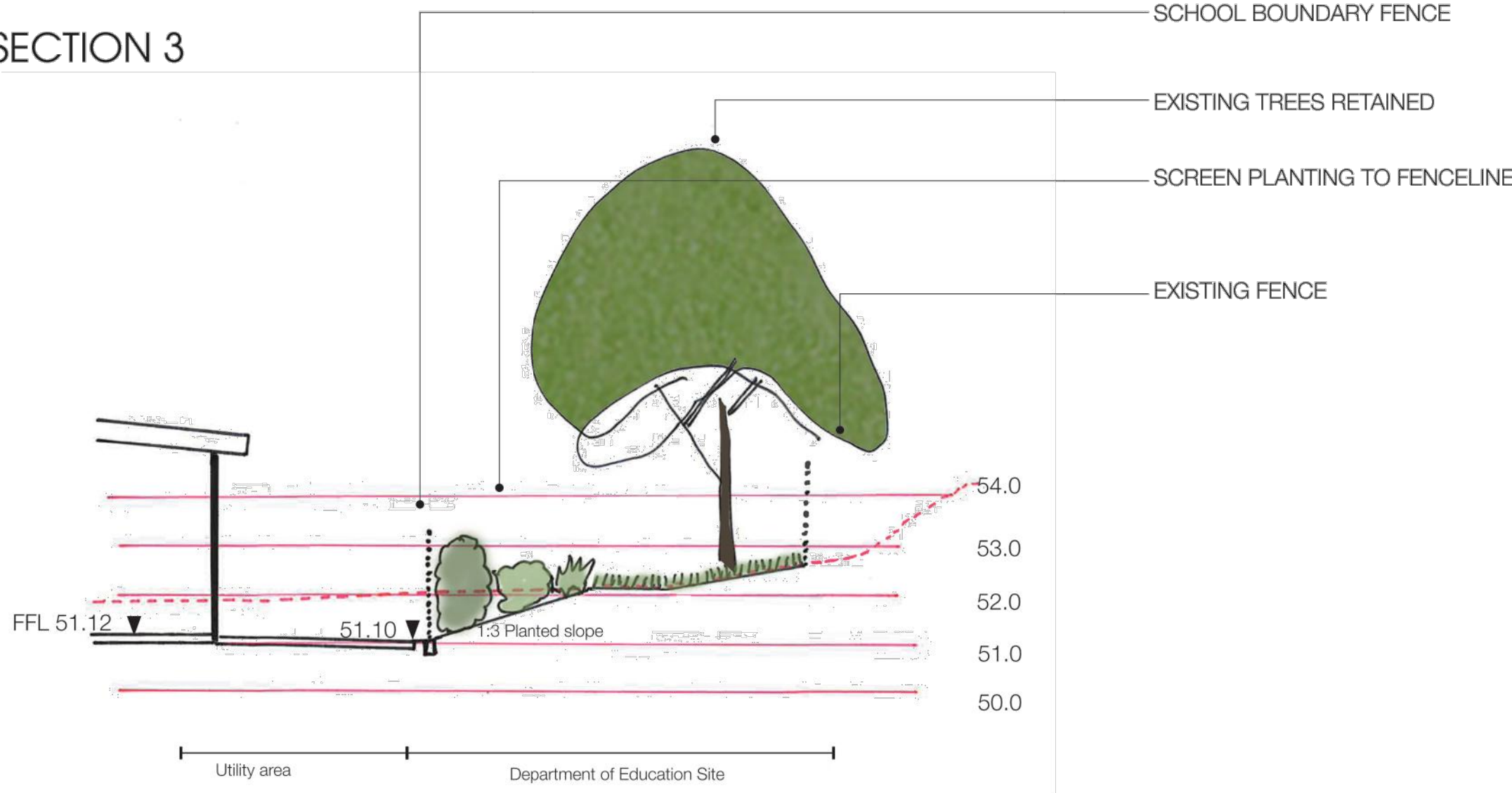
SECTION 1



SECTION 2



SECTION 3



Project Management
SJA
Level 1, 109 Pitt Street, NSW, 2000
02 9226 5800

Structural and Civil
HENRY & HYMAS
Suite 2.01, 628 Pacific Highway, Gordon, NSW, 2072
02 9417 8600

Building Services
INTELLE BUILDING SERVICES
Level 2, 100 Kent Street, Sydney, NSW, 2000
02 9772 3600

BCA Consultant
STEVE WATSON & PARTNERS
Level 17, 455 Kent Street, Sydney, NSW, 2000
02 9263 6555

Client
SCHOOL INFRASTRUCTURE NSW
Level 8, 250 George Street, Sydney, NSW, 2000
1300 462 6511



GROUP GSA

Group GSA Pty Ltd ABN 76 002 113 779
Level 7, 80 William St East Sydney NSW
Australia 2011 www.groupgsa.com

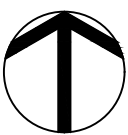
T +612 9361 4144 F +612 9332 3458
architecture interior design urban design landscape
nom architect M. Sheldon 3990

Project Title
BUDAWANG SCHOOL

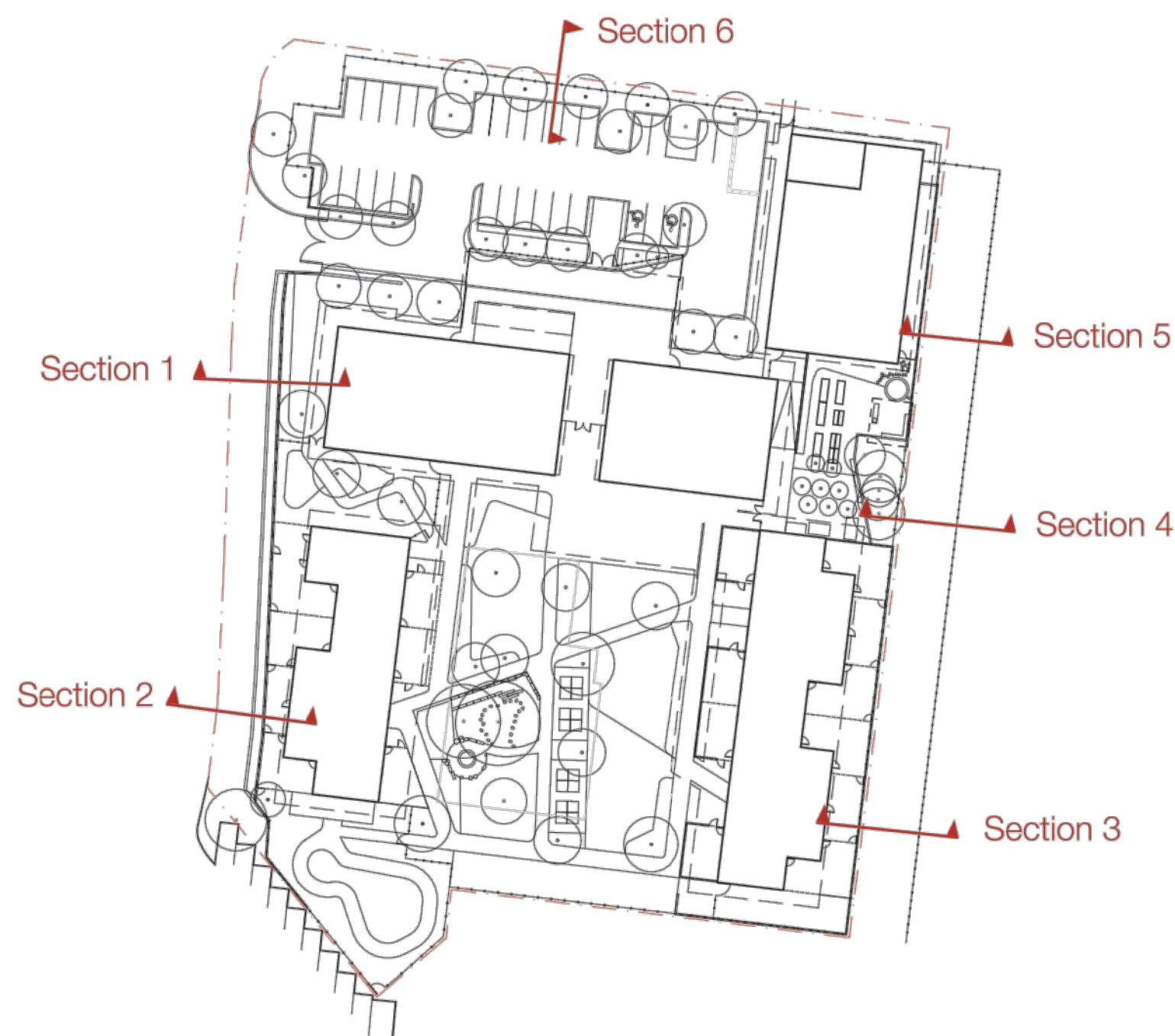
Drawing Title
DETAILED SECTIONS

Scale 1:100 @A1
Drawing created (date) 13/04/2021
By LG
Plotted and checked by LG
Verified FR
Approved FR
Drawing No Issue
190941 L-6000 A

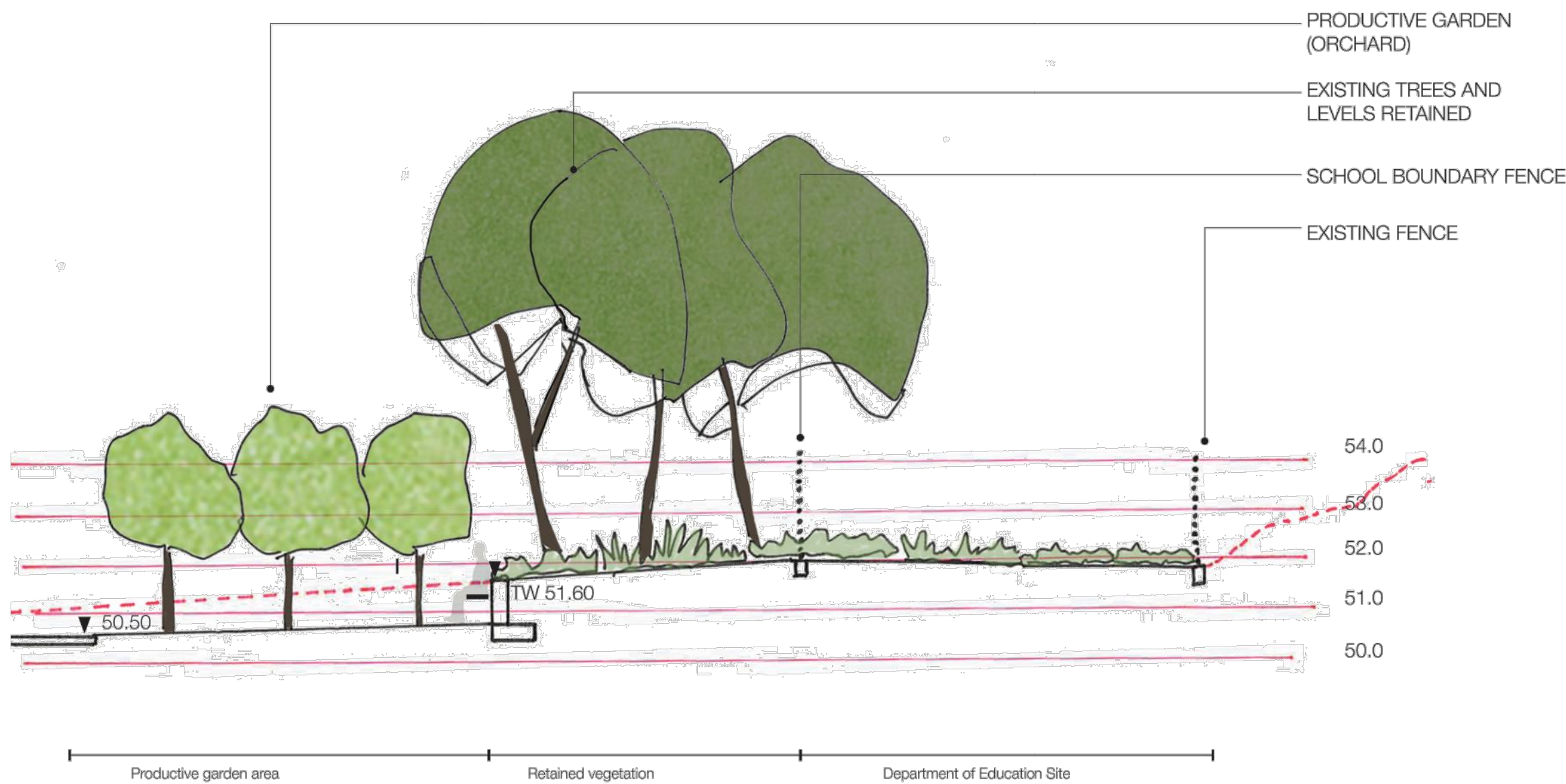
This drawing is the copyright of Group GSA Pty Ltd and may not be altered, reproduced or transmitted in any form or by any means in part or in whole without the written permission of Group GSA Pty Ltd. All levels and dimensions are to be checked and verified on site prior to the commencement of any work, making of shop drawings or fabrication of components. Do not scale drawings. Use figured Dimensions.



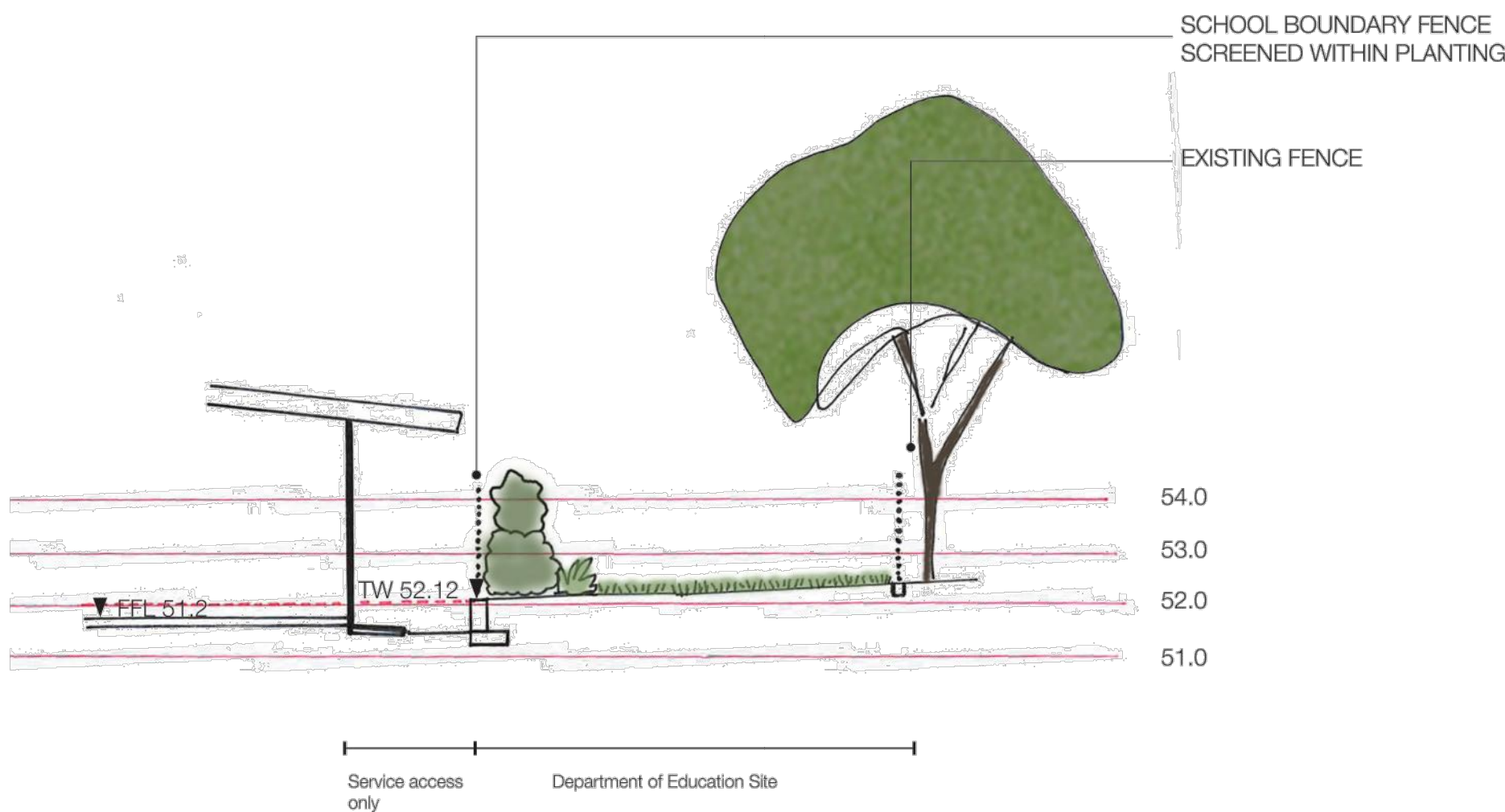
BOUNDARY TREATMENTS



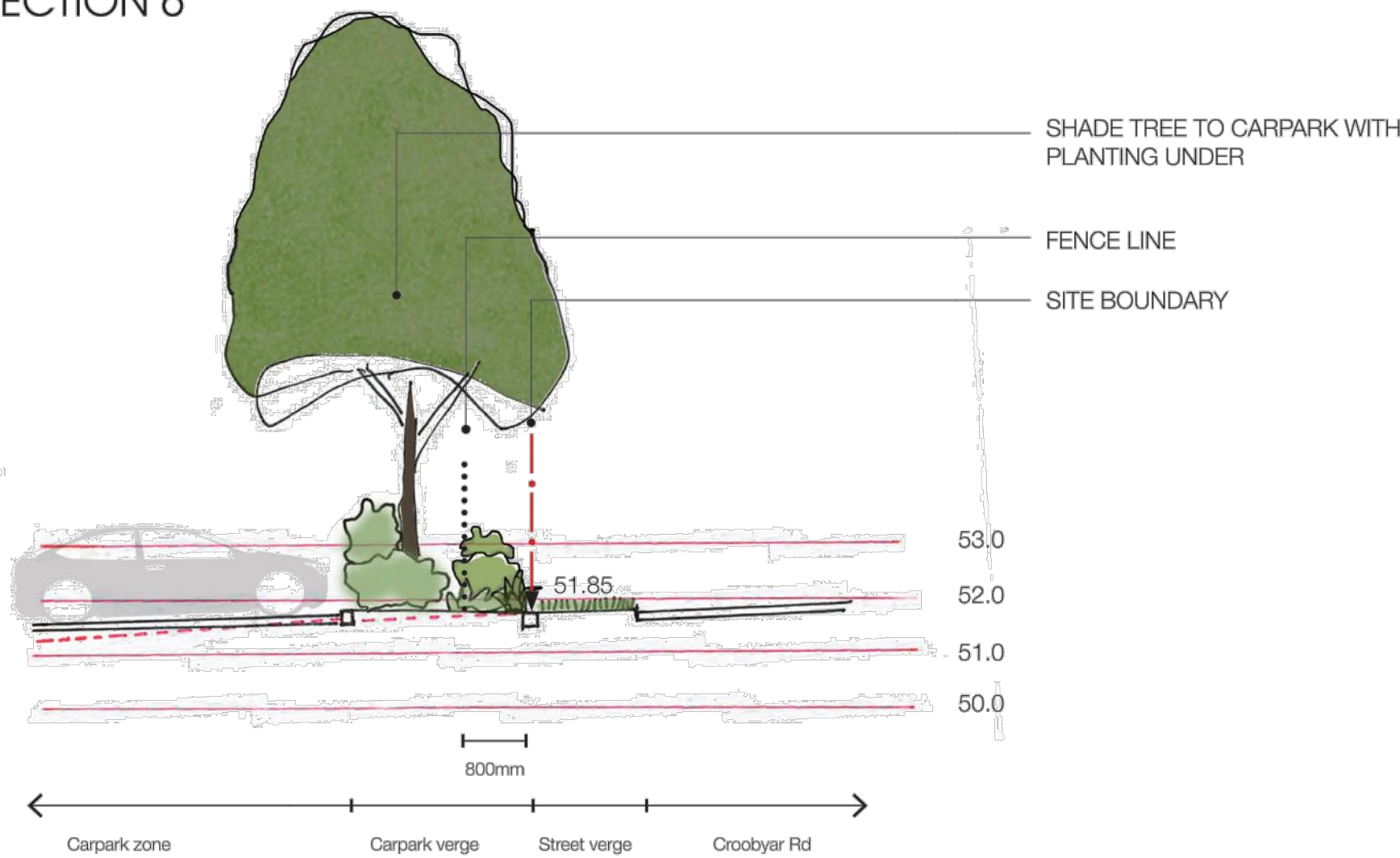
SECTION 4



SECTION 5



SECTION 6



Project Management

SJA
Level 1, 109 Pitt Street, NSW, 2000
02 9226 5000

Structural and Civil

HENRY & HYMAS
Suite 2.01, 628 Pacific Highway, Gordon, NSW, 2072
02 9417 8600

Building Services

INTELLE BUILDING SERVICES
Level 2, 100 Kent Street, Sydney, NSW, 2000
02 9772 3600

BCA Consultant

STEVE WATSON & PARTNERS
Level 17, 456 Kent Street, Sydney, NSW, 2000
02 9263 6555

Client

SCHOOL INFRASTRUCTURE NSW
Level 8, 250 George Street, Sydney, NSW, 2000
1300 462 6511



GROUP GSA

Group GSA Pty Ltd ABN 76 002 113 779
Level 7, 80 William St East Sydney NSW
Australia 2011 www.groupgsa.com

T +612 9361 4144 F +612 9332 3458
architecture interior design urban design landscape
nom architect M. Sheldon 3990

Project Title

BUDAWANG SCHOOL

Drawing Title

DETAILED SECTIONS

Scale 1:100 @A1

Drawing created (date) 13/04/2021

By LG

Plotted and checked by LG

Verified FR

Approved FR

Drawing No Issue

190941 L-6001 A

This drawing is the copyright of Group GSA Pty Ltd and may not be altered, reproduced or transmitted in any form or by any means in part or in whole without the written permission of Group GSA Pty Ltd. All levels and dimensions are to be checked and verified on site prior to the commencement of any work, making of shop drawings or fabrication of components. Do not scale drawings. Use figured Dimensions.

