

16 March 2022

Lander Robinson  
Senior Environmental Assessment Officer  
Planning and Assessment  
NSW Department of Planning, Industry and Environment  
4 Paramatta Square  
Paramatta NSW, 2150



**NGH**

Lander.robinson@planning.nsw.gov.au

Dear Lander,

**Re: Gregadoo Solar Farm (SSD 8825) – Final Layout Plans: Substation Works**

I am writing regarding the Gregadoo Solar Farm (SSD8825) on behalf of the proponent (Gregadoo Solar Farm Pty Ltd).

Schedule 2 Condition 5 of the Conditions of Consent (CoCs) (as amended March 2021) states:

*Prior to the commencement of construction, the Applicant must submit detailed plans of the final layout of the development to the Secretary, including details on the siting of solar panels and ancillary infrastructure.*

“Ancillary Infrastructure” is defined as:

*All project infrastructure with the exception of solar panels, including but not limited to collector substations, switching stations, permanent offices, site compounds, electricity transmission lines and internal roads.*

The proponent has, in consultation with TransGrid, developed plans for the High voltage connection at the Wagga Wagga substation. The works required for the connection include:

- Installation of 132kV connection switch bay at the Wagga 330kV Substation (WG-1)
- Installation of conduit up to 5m outside of the WG-1 substation fence, which will be used to pull the solar farm underground power cable connection into the substation
- Termination of 132kV underground cable at Bay 2V of the Wagga 330kV substation
- Various electronics for Quality of Supply (QoS) and metering requirements at 132kV bus of the Wagga 330kV substation
- Control and protection equipment, and other communications works such as optical fibre within the Wagga 330kV substation
- Excavations for foundations with dimensions as for other structures on site
- Construction and erection of structures to carry electrical cables, insulators, bus bars and switch gear

Figures showing the solar farm indicative layout (circled in red), a image of switch Bay 2V, (circled in red), the location plan of the switch bay (circled in red) and the layout of the switch bay are provided in Appendix A.

The final layout drawings (as required by as required by CoC 5 Sch 2) for the remainder of the project will be provided to the department subsequently prior to construction.

The substation plans provided are the final layout plans for the new substation connection switch Bay 2V. The “preliminary” status of the drawings relates to contractual matters between the solar farm and TransGrid. No additional plans will be prepared as TransGrid relies on standard drawings for each component described above.

If you have any questions, please contact me. I would be pleased to discuss any aspect of this project with you further.

Yours sincerely,

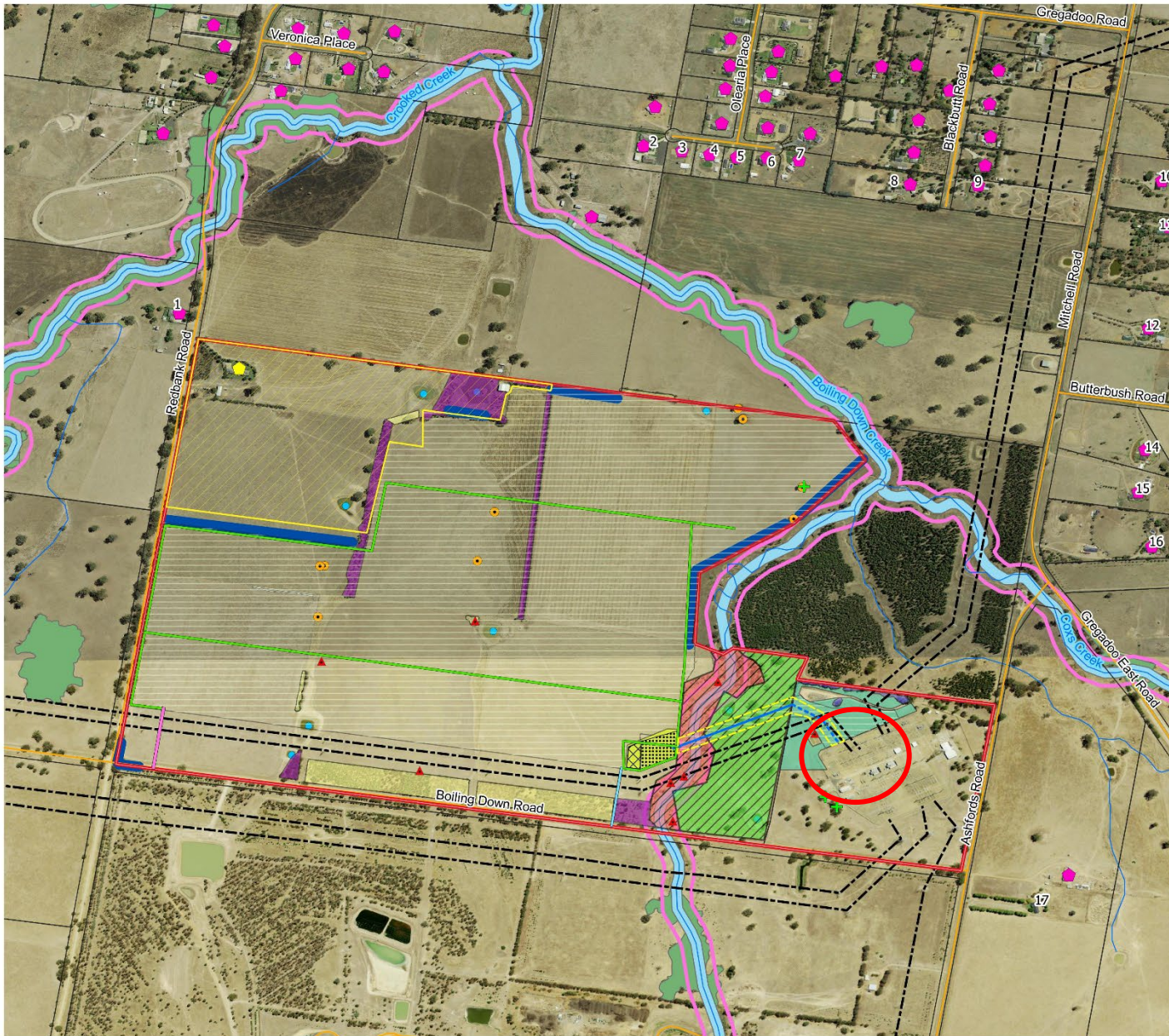
A handwritten signature in black ink, appearing to read 'Hannah Weiss', written in a cursive style.

**Hannah Weiss**

Environmental Consultant

0448 989 160

# Appendix A Layout Plans



## Indicative Layout

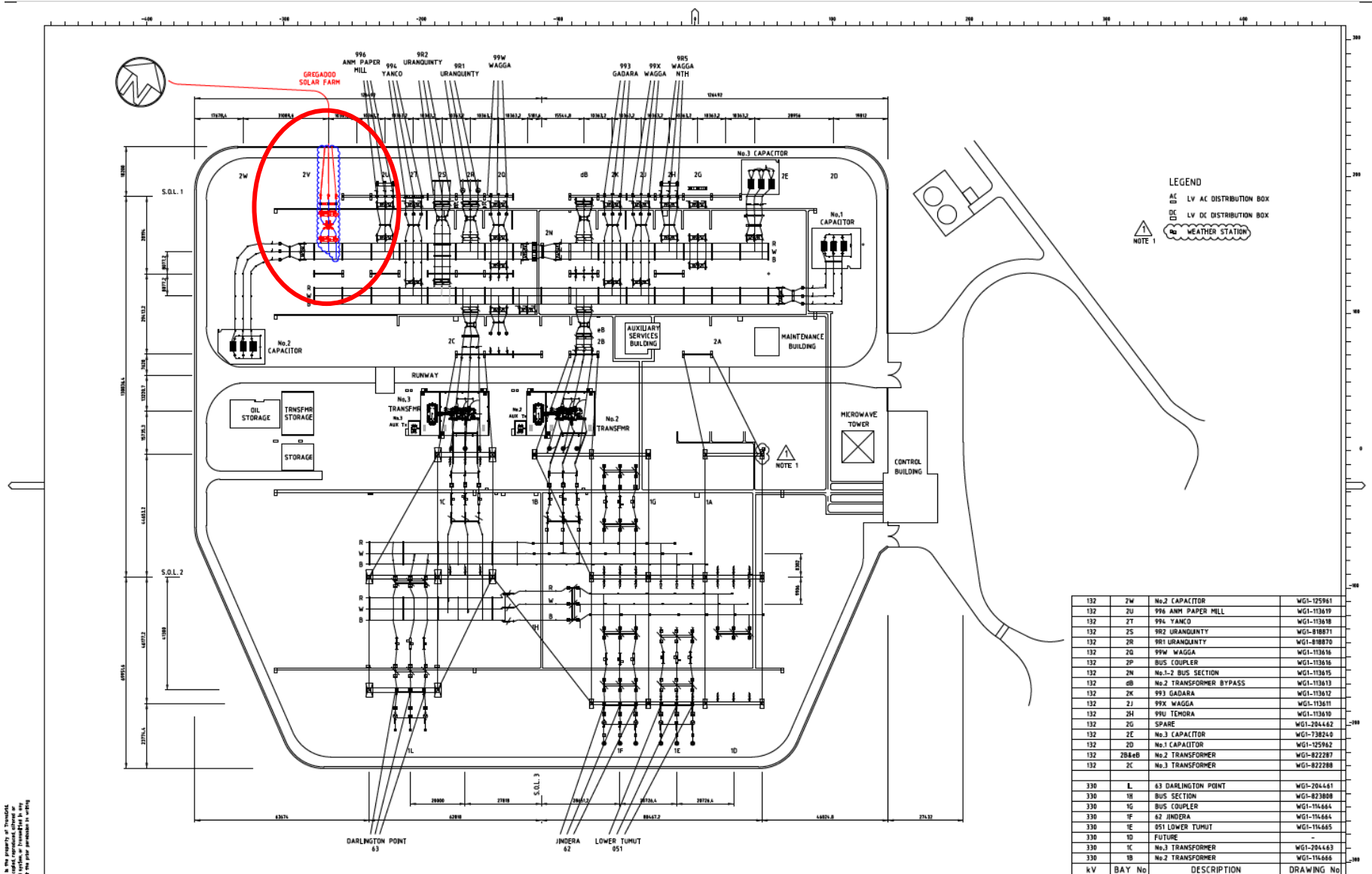
- Development Footprint
- Project Site (Development Site)
- Landholder subdivision
- Proposed on-site substation subdivision
- Cadastre
- Construction Compound / Laydown
- Onsite Substation
- Indicative transmission line**
  - Proposed underground transmission line
  - Project overhead transmission line
  - Connection easement
  - Existing transmission lines
- Site access**
  - Main access road
  - Emergency access road
  - Internal access road
  - Public road
- Sensitive receptors**
  - Associated landowner
  - Non-associated landowner
  - Aboriginal artefacts
  - Cultural tree (to be retained)
  - Farm dams
  - Waterways
  - Aquatic Groundwater Dependant Ecosystem
  - 20m Buffer - Aquatic Groundwater Dependent Ecosystem
  - Terrestrial Groundwater Dependant Ecosystem
  - Vegetation screening
  - Paddock trees
- Plan Community Types (PCTs)**
  - PCT 76: Western grey box tall grassy woodland
  - PCT 277 - No trees
  - PCT 277 - Trees
  - PCT 277 - Planted: Planted
  - PCT 277: Blakely's Red Gum - Yellow Box Grassy Woodland
  - Planted Vegetation (no PCT)
  - Threatened Ecological Community, Box Gum Woodland

Data Attribution  
 © NGH 2021  
 © Design courtesy Greenswichtech, 2017  
 © Base map and topographic features, Land and Property Information (NSW) 2020  
 Ref: 19-590 Gregadoo SF RfSD 20201012 \\  
 Modification constraints A3  
 Author: clancy.b  
 Date created: 08.02.2021  
 Datum: GDA94





19-590 Gregadoo Solar Farm



LEGEND  
 AC LV AC DISTRIBUTION BOX  
 DC LV DC DISTRIBUTION BOX  
 WEATHER STATION  
 NOTE 1

132	2W	No.2 CAPACITOR	WG1-125961
132	2U	996 ANM PAPER MILL	WG1-113610
132	2T	994 YANCO	WG1-113610
132	2S	992 URANGUNTY	WG1-818871
132	2R	991 URANGUNTY	WG1-818870
132	2Q	99W WAGGA	WG1-113615
132	2P	BUS COUPLER	WG1-113616
132	2N	No.1-2 BUS SECTION	WG1-113615
132	2M	No.2 TRANSFORMER BYPASS	WG1-113613
132	2K	993 GADARA	WG1-113612
132	2J	99X WAGGA	WG1-113611
132	2H	99U TEMORA	WG1-113610
132	2G	SPARE	WG1-204442
132	2E	No.3 CAPACITOR	WG1-738248
132	2D	No.1 CAPACITOR	WG1-125962
132	2B&E	No.2 TRANSFORMER	WG1-822287
132	2C	No.3 TRANSFORMER	WG1-822288
330	L	63 DARLINGTON POINT	WG1-204441
330	1H	BUS SECTION	WG1-823008
330	1G	BUS COUPLER	WG1-114664
330	1F	62 JINDERA	WG1-114664
330	1E	051 LOWER TUMUT	WG1-114665
330	1D	FUTURE	-
330	1C	No.3 TRANSFORMER	WG1-204443
330	1B	No.2 TRANSFORMER	WG1-114666
KV	BAY No	DESCRIPTION	DRAWING No

REVISIONS: MAJOR 01-01-2019  
 GREGADOO SF BAY RELOCATED TO A SPARE BAY 2V



DESIGN	AC	ZIV/010	OTransGrid
REVIEW	AC	ZIV/010	WAGGA 330KV SUBSTATION & TRANSMISSION LINES
DESIGNED	AT	ZIV/010	SWITCHGEAR/SUBSTATION & TRANSMISSION LINES
APPROVED	AT	ZIV/010	330KV & 10KV SWITCHGEAR/SUBSTATION & TRANSMISSION LINES
PROJECT	GREGADOO SOLAR FARM		
SCALE	1:1		
DATE	31/01/2020		
PROJECT NO	WG1-PD-SK-101		
PROJECT NAME	GREGADOO SOLAR FARM		
PROJECT NO	WG1-PD-SK-101		
PROJECT NAME	GREGADOO SOLAR FARM		

This drawing is copyright and in the property of TransGrid. It is not to be used for any other project without the prior permission in writing from TransGrid.

