

# Advert in The Daily Advertiser

## Gregadoo Solar Farm Modification 4 to include a battery energy storage system

The Gregadoo Solar Farm, approved in 2018 and located 13 km southeast of Wagga Wagga, is being developed by Hanwha Energy Australia (Hanwha). Hanwha is a subsidiary of South Korea's Hanwha Energy Corporation, a global leader and investor in renewable energy.

Hanwha is proposing Modification 4, which includes adding a 200MW battery energy storage system (BESS) to store electricity both onsite and from the grid. This will ensure renewable energy from the solar farm is available during peak demand times.

Hanwha is preparing a Modification Report to outline the environmental and social impacts of this change and will engage with the local community to share information and gather feedback on Modification 4.

### ONLINE INFORMATION SESSION

Date:  
**Wednesday 7 August 2024**  
Time:  
**5.30-6.30pm**  
Meet the project team, learn about the project, ask questions, and provide feedback

### DOOR KNOCKING

Date:  
**Tuesday 30 and Wednesday 31 July 2024**  
The project team will visit close by residents to discuss the project, its impacts, and gather feedback.

You can provide additional feedback through our online Survey via this QR code.



### MORE INFORMATION

[www.gregadoosolarfarm.com.au](http://www.gregadoosolarfarm.com.au)  
[info@Gregadoosolarfarm.com.au](mailto:info@Gregadoosolarfarm.com.au) (02) 8000 0889

## NEWS



Crews work to put out a truck cabin fire on the Mid Western Highway. Picture by FRNSW

## Driver saves cattle after truck ignites

### Taylor Dodge

A QUICK-THINKING truck driver saved the hundreds of cattle he was transporting as his cabin went up in flames on a Riverina highway.

About 8pm on Wednesday Fire and Rescue NSW (FRNSW) and Rural Fire Service crews responded to reports of a B-double fire on the Mid Western Highway at Hay.

FRNSW Hay acting captain Jake Murphy said when crews arrived at the scene firefighters found the cabin well alight. "Fortunately, the truck driver was able to get

### FRNSW was able to protect the cattle from exposure.

### Jake Murphy

out and detach the trailers and FRNSW was able to protect the cattle from exposure to the fire," he said.

The highway was temporarily closed in both directions, while the truck cabin was fully destroyed by the fire. It is thought the fire

was caused by mechanical failure.

It was the second incident involving livestock trucks on Riverina's roads that day, after a truck carting 500 sheep was one of three vehicles involved in a fatal collision on the eastern edge of the region. Two cars and a truck collided on Burley Griffin Way at Murrumburrah late on Wednesday morning.

The driver of one of the cars died before emergency services arrived at the scene, while the 64-year-old man in the second vehicle and the 28-year-old truck driver escaped uninjured.

**From bucket list to book now**  
Explore is your ultimate travel storytelling and deals destination



Inside this newspaper on Saturday



this week

The Asia Issue: Plan your next holiday in the colourful continent with our 28-page special edition

### Feature

From a stormy morning in the Indian city of Jaipur to an evening with gentle orangutans in Indonesian Borneo, six *Explore* writers recount their most memorable day in Asia.

### More

- Singapore fling: Enjoy a sensational stopover in the Lion City.
- Stop til you drop in Japan: Here's the key to Tokyo's bustling Ginza district.

### Best Deal

A well-known luxury cruise line is offering discounts of \$7500 per person or more on an exciting 17-day voyage that visits Taiwan, the Philippines and Indonesia with rare wildlife encounters.



# Project Newsletter

## Gregadoo Solar Farm

Modification 4 to include a battery energy storage system  
JULY 2024



Gregadoo Solar Farm is seeking to modify the approved solar farm to include a 200 Megawatt (MW) battery energy storage system (BESS).

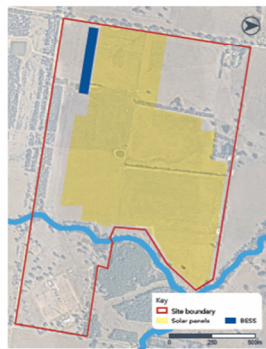
The proposed modification 4 aims to better use the solar farm project site by incorporating a 200MW battery energy storage system (BESS) to store generated electricity onsite and from the grid.

Modification 4 will support State and Federal renewable energy targets and will aid in grid firming, which is dispatching electricity into the grid during peak demand to strengthen grid stability as Australia transitions away from traditional fossil fuel generators.

It also includes a new access point and internal track from Boiling Down Road. This access is necessary to construct and maintain the approved overhead and underground transmission line to the internal substation and external Transgrid substation without affecting Boiling Down Creek and the surrounding natural area.

The BESS would include:

- \* containerised batteries with a capacity of up to 200 MW
- \* an underground and overhead transmission line to connect the BESS to the adjacent Transgrid substation
- \* access from Boiling Down Road.
- \* a substation.



### THE GREGADOO SOLAR FARM

Initiated in 2018 by Hanwha Energy Australia, the primary aim of the Gregadoo Solar Farm is to provide affordable clean energy for Australians while also lending support to agriculture and rural communities.

Hanwha Energy Australia is committed to delivering cost-effective, environmentally sustainable energy solutions, including solar and battery power, through their energy retailer business, Nectr. Both companies are affiliated with the Hanwha Energy Corporation, a world leading South Korean company and investor in renewable energy technology.

For further information about Hanwha Energy Corporation, please visit <https://hec.hanwha.co.kr/eng/enMain.do>  
To learn more about Nectr, visit [www.nectr.com.au](http://www.nectr.com.au)

### Planning and development history

The Gregadoo Solar Farm was initially approved by the NSW Department of Planning and Environment (DPE) under the delegation of the Minister for Planning in December 2018.

Since 2018, the Gregadoo Solar Farm has been modified twice, with approvals granted in March 2021 and August 2023.

### Project status and approval process

Hanwha Energy Australia is now seeking planning approval from the Department of Planning, Housing and Infrastructure (DPHI) through a Modification to include a BESS within the approved Gregadoo Solar Farm through a State Significant Development Application (SSDA).

As part of this approval process, the project team will prepare a Modification Report addressing potential environmental, economic and social impacts, along with proposed mitigation measures. The report looks at:



### Online information session

This is an opportunity for interested neighbours and the community to meet the project team, learn about the project, ask questions and provide feedback.

When:

Wednesday 7 August 2024  
5.30–6.30pm

Email [engagement@bdinfrastructure.com](mailto:engagement@bdinfrastructure.com) to register

### Door knocking

We will also be around to door knock close residents throughout the day on Tuesday 30 and Wednesday 31 July 2024

As part of Modification 4, we will continue to engage with the community on these impacts and mitigation measures to ensure they meaningfully shape the modification.

### Next steps

In late-2024, the Gregadoo Solar Farm will submit the Modification Report to DPHI who will publicly exhibit it for a minimum of 28 days. During this time, anyone can read the Report and make a submission to DPHI.

You can provide additional feedback through our online Survey via this QR code.



### LEARN MORE

The Gregadoo Solar Farm has commissioned bd infrastructure to collect your feedback and provide further information about the Gregadoo Solar Farm Modification to include a BESS.

Reach the team here:

[info@gregadooosolarfarm.com.au](mailto:info@gregadooosolarfarm.com.au)  
(02) 8000 0889

<https://gregadooosolarfarm.com.au>

# Door knocking summary

## 1.1 Summary of Activities on 30-31 July 2024

Door-to-door outreach was conducted approximately 1 km from the location of the Battery Energy Storage System (BESS), covering the following streets:

- Boiling Down Road
- Ashfords Road
- North side of Redbank Road
- Veronica Place
- Olearia Place
- Blackbutt Road
- *Portions of Mitchell Road*
- *Portions of Gregadoo E Road*
- *East side of Butterbush Road.*

Address	Notes
<b>43 Redbank Road</b>	<ul style="list-style-type: none"> <li>• Doesn't want to see anything from his property</li> <li>• Curious about access tracks/points, traffic movements, and haulage routes for the construction</li> <li>• Maintenance personnel on site for the operation</li> <li>• General solar farm questions</li> </ul>
<b>481 Mitchell Road</b>	<ul style="list-style-type: none"> <li>• Tired of Transgrid</li> <li>• Mention of trees being removed from front of street on Mitchell Road</li> <li>• Concerned about property prices decreasing</li> <li>• Concerned about fires and hazards from the BESS</li> <li>• Concerned about visual impacts</li> </ul>
<b>60 Butterbush Road</b>	<ul style="list-style-type: none"> <li>• No concerns about impacts were given.</li> <li>• Newsletter left</li> </ul>
<b>21 Butterbush Road</b>	<ul style="list-style-type: none"> <li>• No concerns were stated.</li> <li>• Interested if they could see it from their property and if there was any screening</li> <li>• General curiosity in the solar farm</li> </ul>
<b>1562 Gregadoo E Road</b>	<ul style="list-style-type: none"> <li>• No concerns were stated</li> <li>• Interested if they could see it from their property and if there was any screening.</li> <li>• General curiosity in the solar farm</li> </ul>
<b>7 Blackbutt Road</b>	<ul style="list-style-type: none"> <li>• Curious about if there are any road upgrades and curious about truck movement during construction</li> <li>• Cant see it so there are no impacts</li> <li>• Suggested other might be concerned about traffic and visual on Mitchells Road</li> </ul>
<b>8 Blackbutt Road</b>	<ul style="list-style-type: none"> <li>• No concerns about the project, but was curious about the total build, location of the BESS and solar panel</li> </ul>

Address	Notes
<b>3 Olearia Place</b>	<ul style="list-style-type: none"> <li>Said that the newsletter map was no good and that the batteries look temporary in the photo</li> <li>Curious about the lifespan of the project and the decommissioning of the solar Pannels and the battery</li> <li>Curious about our recycling process for the batteries</li> <li>Wondering why trees were cut down near Mitchell and Ashfords Road.</li> <li>Personally owns solar</li> <li>Happy we chatted to them</li> </ul>
<b>19 Olearia road</b>	<ul style="list-style-type: none"> <li>No concerns were raised about the solar farm</li> <li>Was curious about local employment opportunities for electrical contractors</li> </ul>
<b>3 Veronica Place</b>	<ul style="list-style-type: none"> <li>No concerns were noted</li> <li>General interest in the project</li> </ul>
<b>6 Veronica Place</b>	<ul style="list-style-type: none"> <li>Concerns about traffic movements around Veronica and Redbank, especially trucks because of the kids in the area. suggested that the dirt roads might be hard to travel on. Was also wondering about access point and if any roads will be upgraded. Trucks and Utes from secure and TransGrid speed down the Redbank.</li> <li>Suggested that the rezoning to the east of the site means properties and subdivisions are likely to happen in the future.</li> <li>Wondering what the hazards and protections are for the neighbours.</li> <li>Redbank has low traffic movement</li> <li>Owns Geotech company in the area</li> <li>South of the site is mainly council owned.</li> </ul>
<b>4 Olearia Place</b>	<ul style="list-style-type: none"> <li>No concerns about the project were mentioned</li> <li>Was curious about the general project and solar farm and impacts of the BESS</li> <li>Curious about construction hours, and start date</li> <li>Natural</li> <li>Interested to know about</li> <li>Wanted local benefits, in terms of employment and procurement, such as apprenticeships to retain youth to the area as well as training opportunities</li> <li>Wanted affordable energy for Regional communities who are hosting the projects.</li> </ul>
<b>10 Olearia Place</b>	<ul style="list-style-type: none"> <li>No concerns were noted. There will be no impacts to them.</li> </ul>
<b>24 Gregadoo Rd</b>	<ul style="list-style-type: none"> <li>Called on day of the door knock, suggested that we send information through email.</li> </ul>
<b>42 Redbank Road</b>	<ul style="list-style-type: none"> <li>Has previously been through the SSDA process for a piggery.</li> <li>Questions about the operational impacts of the farm including safety and security of the site such as fencing and cameras.</li> <li>Traffic concerns: Suggested there was minimal impact to his property if the traffic was using Mitchell Road. But was curious about traffic safety plans due to children being around the properties.</li> <li>Asked if there was visual impact form his property.</li> <li>Wondering if there was noise pollution from the BESS that he might be able to hear.</li> <li>What is the construction timeline and commencement.</li> <li>Will property values be impacted?</li> <li>Are there any local employment opportunities in operation and construction.</li> <li>General questions about eh solar farm.</li> </ul>
<b>76 Redbank Road</b>	<ul style="list-style-type: none"> <li>General question about property values.</li> <li>Says that there seems to be no impact from the proposed BESS.</li> <li>Eventually looking to sub-divide his land for more housing.</li> <li>Wondering if access to his house would be impacted or if there are any traffic impacts.</li> </ul>

# Appendix D: Community and Stakeholder Survey

## Community Survey - Gregadoo Solar Farm Modification 4

### Community Survey - Gregadoo Solar Farm Modification 4

The survey is open from 25 July to 25 August - 11:59pm.

What is the Gregadoo Solar Farm Modification 4 to include a battery energy storage system?

The approved Gregadoo Solar Farm is located around 13 km southeast of the Wagga Wagga township. It was initially approved in 2018 and is planned to start construction in 2025.

The proposed modification 4 aims to better use the solar farm project site by incorporating a 200MW Battery Energy Storage System (BESS) to store generated electricity onsite and from the grid.

Modification 4 will support State and Federal renewable energy targets and will aid in grid firming, which is dispatching electricity into the grid during peak demand to strengthen grid stability as Australia transitions away from traditional fossil fuel generators.

It also includes a new access point and internal track from Boiling Down Road. This access is necessary to construct and maintain the approved overhead and underground transmission line to the internal substation and external Transgrid substation without affecting Boiling Down Creek and the surrounding natural area.

The BESS would include:

- containerised batteries with a capacity of up to 200 MW
- an underground and overhead transmission line to connect the BESS to the adjacent Transgrid substation
- access from Boiling Down Road.
- a substation.

#### Gathering your feedback

On behalf of the Gregadoo Solar Farm project team, bd infrastructure is engaging with the community to understand how this modification may impact or benefit local communities and the broader region.

The information and feedback gathered from the community will inform the Modification Report, which assesses and outlines the economic, environmental and social impacts of the modification and will help the community, make informed submissions on the modification. The Modification Report would be placed on public exhibition in mid 2024.

In particular, we would like to hear your thoughts on:

- what you value about your local area
- the potential benefits of the modification
- concerns you may have about the modification.

The survey will take you about 8 minutes to complete. The information you provide will remain confidential and your responses will remain anonymous. Your responses remain in bd infrastructure's secure Australian database in accordance with relevant Australian data and privacy laws.

## Community Survey - Gregadoo Solar Farm Modification 4

### Community values

\* 2. Thinking about your local area, please select which of the following are most important to you [please select up to three choices].

- lifestyle
- cost of living
- the landscape and natural environment
- health and wellbeing
- local employment and opportunities
- strong and connected communities
- culture and heritage
- access to social infrastructure and services
- traffic and public transport
- If there anything we missed, please describe those values.

3. Thinking about your local area, describe some of the challenges your community faces. This may include cost of living, access to local employment, services, crime, environmental protection, natural hazards and so on. The maximum length is 150 words or 700 characters.

4. Is there anything else you would like the Gregadoo Soar Farm project team to know about the local communities' values and needs?? The maximum length is 150 words or 700 characters.

## Community Survey - Gregadoo Solar Farm Modification 4

### The BESS' Benefits

The following section will ask you 4 questions relating to the potential benefits of the BESS for the local community.

Thinking about this project, how important are the following potential benefits?

Please add any additional benefits the community may experience from the addition of the BESS to the Gregadoo Solar Farm project.

#### 5. Thinking about this project, how important are the following potential benefits?

	Very Important	Important	Neutral	Not important	Not at all important
Supporting investment in and use of renewable energy (such as wind and solar)	<input type="radio"/>	<input type="radio"/>	<input type="radio"/>	<input type="radio"/>	<input type="radio"/>
Contributing to the project community benefit sharing scheme of the Gregadoo Solar Farm. For instance, benefit sharing might include providing funding (e.g. grants, sponsorships or scholarships), establishing partnerships with important local groups or projects, providing in-kind support or developing education and tourism initiatives.	<input type="radio"/>	<input type="radio"/>	<input type="radio"/>	<input type="radio"/>	<input type="radio"/>
Additional local employment opportunities for residents and businesses during construction and operation of the BESS (e.g. electricians, catering, labour and equipment hire, fencing).	<input type="radio"/>	<input type="radio"/>	<input type="radio"/>	<input type="radio"/>	<input type="radio"/>
Additional construction workforce utilising the local business and area such as buying food, drink, petrol, local services, supplies and using local accommodation.	<input type="radio"/>	<input type="radio"/>	<input type="radio"/>	<input type="radio"/>	<input type="radio"/>

Are there any additional benefits not listed above that you would like to add?

## Community Survey - Gregadoo Solar Farm Modification 4

### The BESS' potential impacts

The following section will ask you 8 questions relating to the potential impacts of the BESS for the local community.

#### 6. Thinking about this project, how concerned are you with the following potential impacts?

	Not at all concerned	Not concerned	Neutral	Concerned	Very concerned
Additional construction impacts (e.g., some extra traffic caused by additional heavy vehicles).	<input type="radio"/>	<input type="radio"/>	<input type="radio"/>	<input type="radio"/>	<input type="radio"/>
Additional workforce of around x during the peak of construction to the x for the solar farm, including impacts on local accommodation and services.	<input type="radio"/>	<input type="radio"/>	<input type="radio"/>	<input type="radio"/>	<input type="radio"/>
Construction or operational impacts on Aboriginal cultural heritage values or sites	<input type="radio"/>	<input type="radio"/>	<input type="radio"/>	<input type="radio"/>	<input type="radio"/>
Construction or operational impacts on non-Aboriginal heritage values or sites.	<input type="radio"/>	<input type="radio"/>	<input type="radio"/>	<input type="radio"/>	<input type="radio"/>
Operational impacts such as noise and vibration of the BESS.	<input type="radio"/>	<input type="radio"/>	<input type="radio"/>	<input type="radio"/>	<input type="radio"/>
Operational visual impacts and changes to the landscape (i.e., being able to see the BESS in the solar farm once completed).	<input type="radio"/>	<input type="radio"/>	<input type="radio"/>	<input type="radio"/>	<input type="radio"/>
Safety and hazard management of the BESS during its operation, including bushfire and flooding risks.	<input type="radio"/>	<input type="radio"/>	<input type="radio"/>	<input type="radio"/>	<input type="radio"/>
Decommissioning of the BESS (i.e., removing all the parts of the BESS from the land once its lend of life).	<input type="radio"/>	<input type="radio"/>	<input type="radio"/>	<input type="radio"/>	<input type="radio"/>


Are there any specific individuals or groups of people who would experience these impacts more than others in the general community?

## Community Survey - Gregadoo Solar Farm Modification 4

A bit about you

11. How informed are you on Australia's energy transition and commitment to net zero?

Not at all informed      Moderately informed      Very informed



12. Which of the following best describes you? (Select all that apply)

- I am a resident of Wagga Wagga
- I am a resident of Gregadoo
- I am a resident in another suburb in the Wagga Wagga LGA
- I am a resident from another LGA
- I own a business or work in the Wagga Wagga LGA
- I represent a community group or organisation
- Other - please specify

13. Do you identify as Aboriginal or Torres Strait Islander?

- Yes
- No
- Do not wish to answer

14. Which of the following best describes your gender?

- Male
- Female
- Do not wish to answer
- Non-binary
- Prefer to self-describe

## Community Survey - Gregadoo Solar Farm Modification 4

Being kept up to date

7. 1. How interested are you in being informed and updated about this project?

- Extremely interested
- Very interested
- Somewhat interested
- Not so interested
- Not at all interested

8. How would you like to be informed about this project in the future? Please select all which apply.

- Project website
- The local paper
- Email (signing up via the [project website](#))
- Community groups and local organisations
- In-person information sessions
- Via Council
- None of the above

9. Do you have additional comments, feedback or questions you would like to share with the Gregadoo Solar Farm project team? Please note, unless you choose to leave your email address in the next question, the survey is anonymous so we will not be able to directly respond.

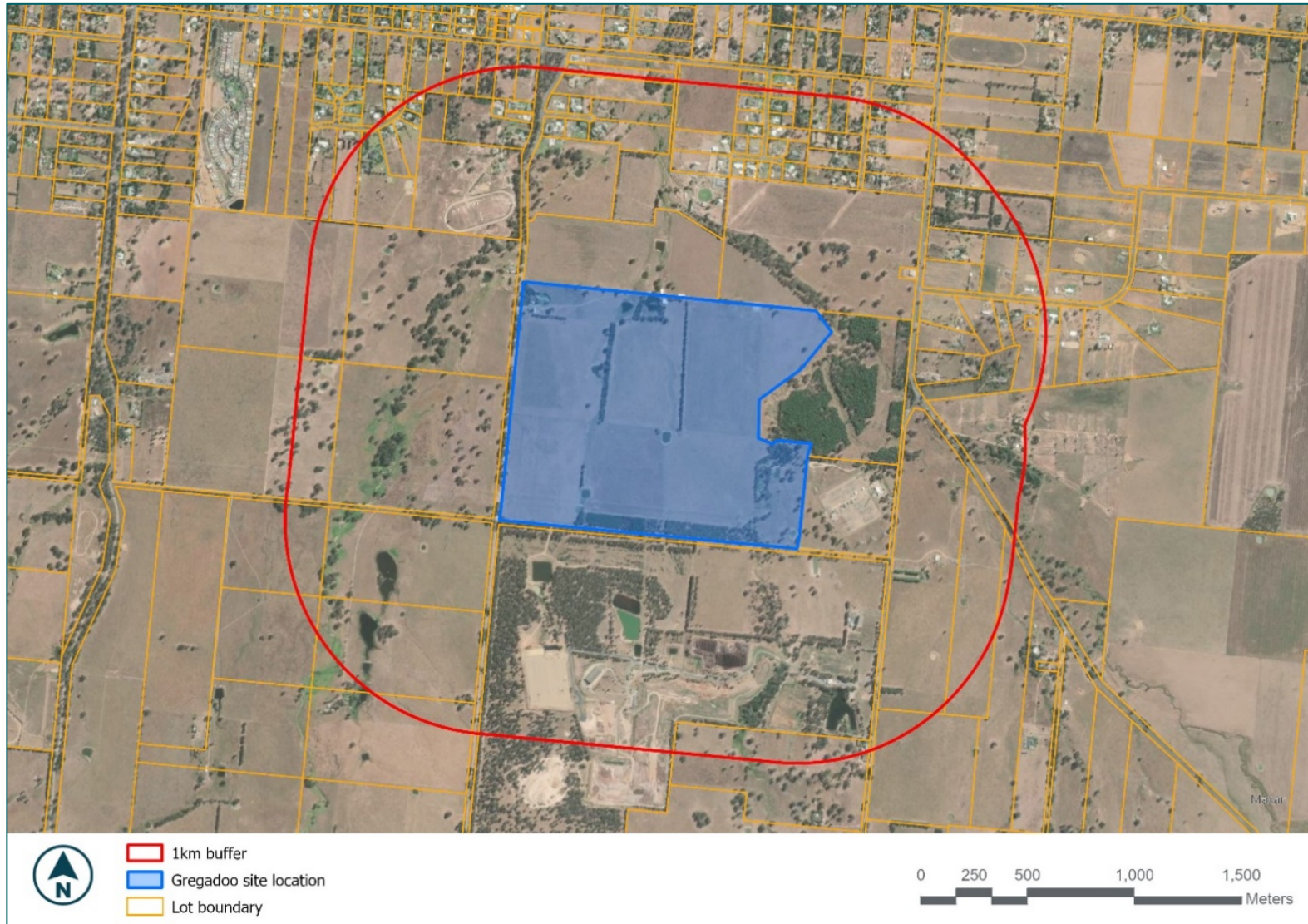
10. If you would like a direct response to your additional feedback, and are comfortable being identified, please leave your email address below so we can reach out to you after the survey has closed.

Optional - Full Name

Optional - Email

Optional - Contact Number

# Newsletter distribution Zone (1km)



# Email notification

Gregadoo Solar Farm Modification 4 to include a BESS - project update

Engagement  
To [Redacted]

project update Gregadoo Solar Farm - Mod 4.pdf  
2 MB

Reply Reply All Forward [Share] [More]

Fri 26/07/2024 3:22 PM

Dear [Redacted]

I'm reaching out to update you on behalf of the Gregadoo Solar Farm project team who are seeking planning approval to add in a battery energy storage system (BESS) – Modification 4.

The approved Gregadoo Solar Farm is located around 13 km southeast of the Wagga Wagga township. It was initially approved in 2018 and is planned to start construction in 2025.

The proposed Modification 4 aims to better use the solar farm project site by incorporating a 200MW Battery Energy Storage System (BESS) to store generated electricity onsite and from the grid. Modification 4 will support State and Federal renewable energy targets and will aid in grid firming, which is dispatching electricity into the grid during peak demand to strengthen grid stability as Australia transitions away from traditional fossil fuel generators. It also includes a new access point and internal track from Boiling Down Road. This access is necessary to construct and maintain the approved overhead and underground transmission line to the internal substation and external Transgrid substation without affecting Boiling Down Creek and the surrounding natural area.

The Gregadoo Solar Farm is now preparing a Modification Report to submit to Department of Planning, Housing and Infrastructure (DPHI).

### Community consultation

bd infrastructure (external community consultant) is supporting the Gregadoo Solar Farm project team to engage with local communities and stakeholders, ensuring community and stakeholder voices are heard throughout the planning process. As a stakeholder in the local area, we are committed to keeping you informed, addressing your questions, and using your feedback to guide the modification's planning and development.

We're hosting an online information session for interested neighbours and stakeholders to meet the Gregadoo Solar Farm's modification project team, learn about the modification, ask questions, and provide feedback.

- When: 5:30 pm – 6:30 pm Wednesday 7 August 2024
- Reply to this email to register ([engagement@bdinfrastructure.com](mailto:engagement@bdinfrastructure.com))
- You can also provide feedback on the modification via our community survey here <https://www.surveymonkey.com/r/QS3GG8W>.

### Can't make it or need more information


We've attached a project update for more information on the modification. If you're unable to attend the session or need more information, we're happy to arrange online briefings to provide more information and gather feedback.


Simply reply to this email or call (02) 8000 0889 to schedule.




For further details, you can also visit our website at [www.gregadoosolarfarm.com.au](http://www.gregadoosolarfarm.com.au)

Best regards,  
Lachlan and the Gregadoo Solar Farm Team

## Gregadoo solar farm

  
**Lachlan Nicholson**  
ENGAGEMENT AND SOCIAL IMPACT ADVISOR  
[engagement@bdinfrastructure.com](mailto:engagement@bdinfrastructure.com)  
[www.bdinfrastructure.com](http://www.bdinfrastructure.com)

**Certified**  
 This company meets high standards of social and environmental impact.  
Corporation

    
ISO 9001:2015 and ISO 45001:2018 certified  
[www.jas-anz.com](http://www.jas-anz.com)

bd infrastructure acknowledges the First Nations peoples as the traditional and rightful owners of the land and waters on which we work, and pay our respects to their Elders past and present. We acknowledge our place in the journey to reconciliation and strive to enhance awareness and knowledge of First Nations cultures, for the benefit of future generations.