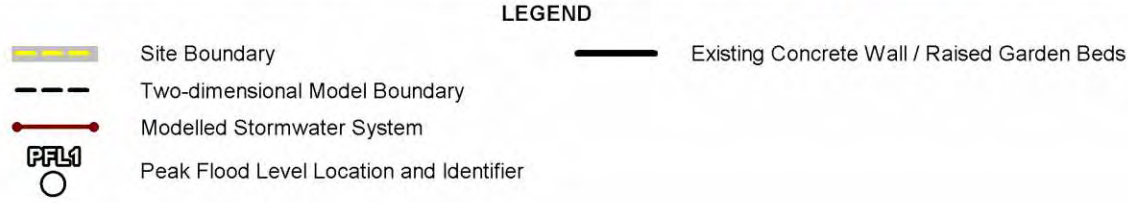
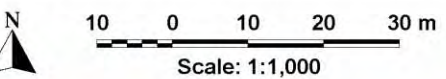
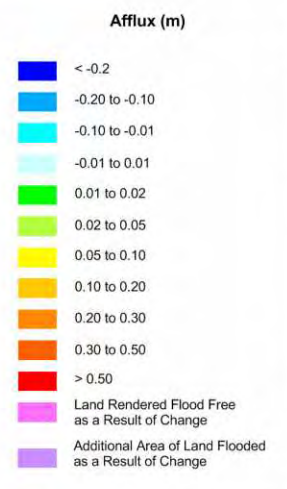
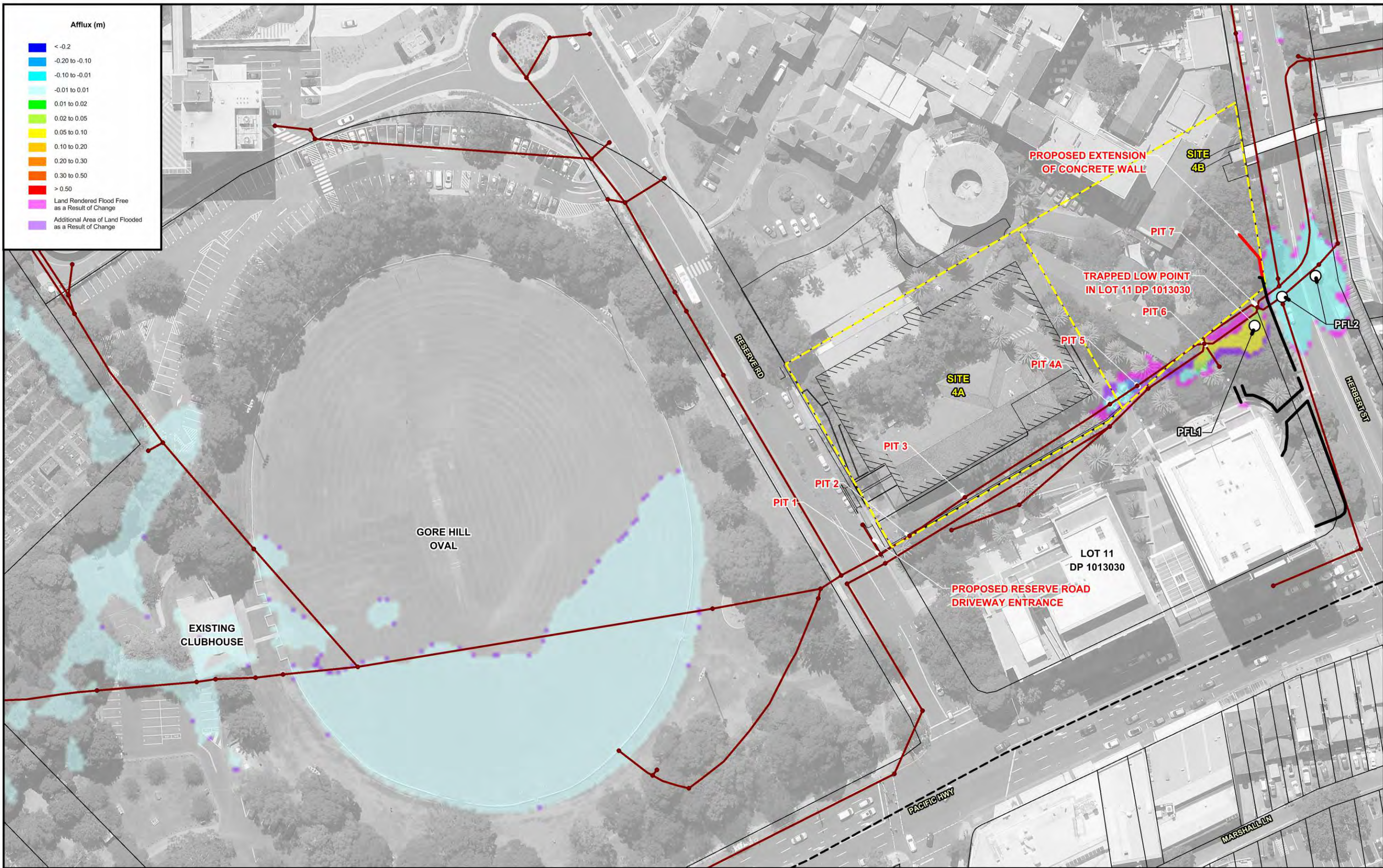


**LEGEND**

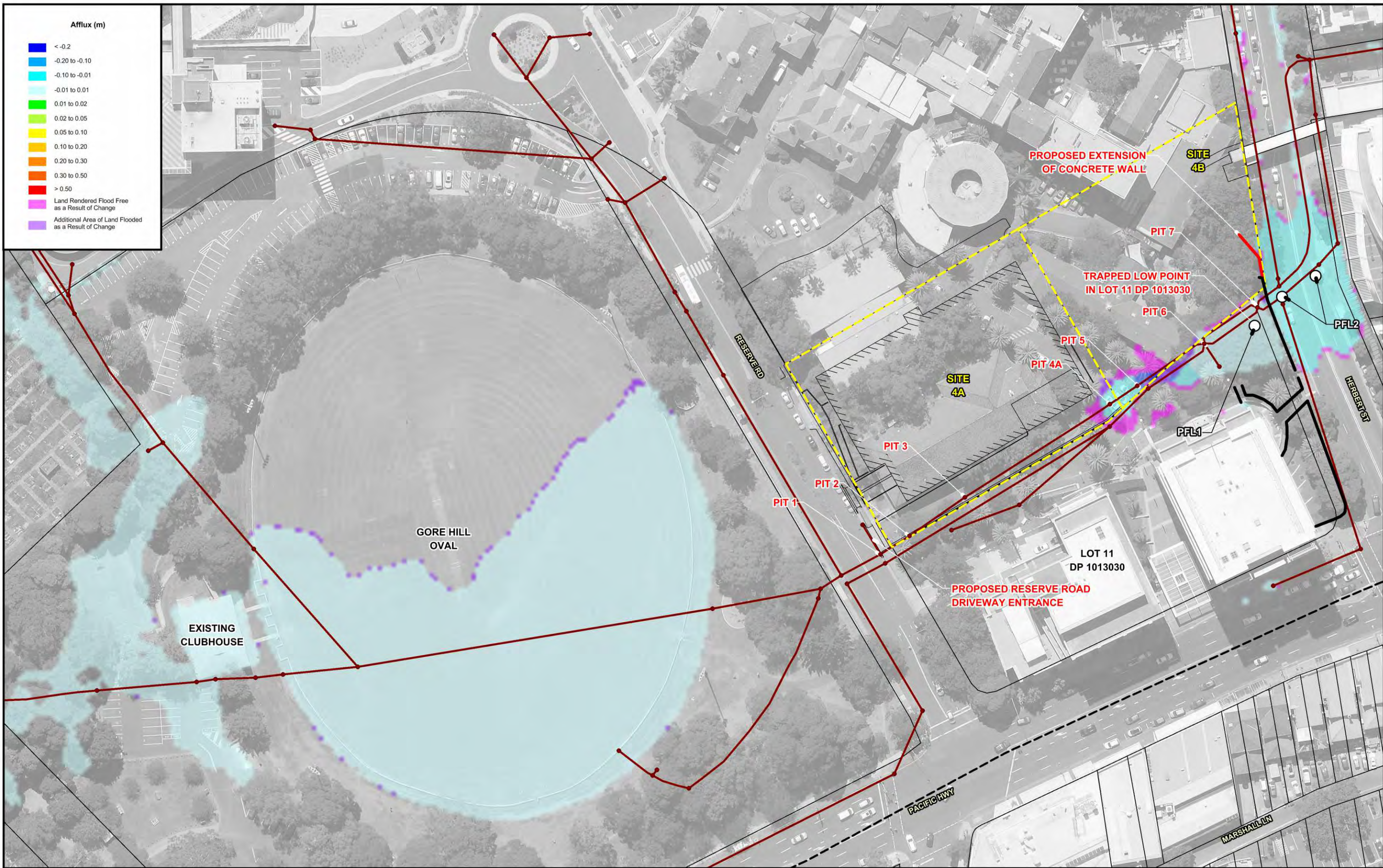
- Site Boundary
- Two-dimensional Model Boundary
- Modelled Stormwater System
- Peak Flood Level Location and Identifier
- Existing Concrete Wall / Raised Garden Beds

**ST LEONARDS HEALTH ORGANISATION RELOCATION  
FLOODING ASSESSMENT**

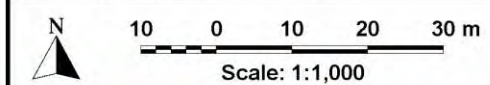
Figure 12  
PATTERNS OF OVERLAND FLOW IN VICINITY OF DEVELOPMENT SITE  
POST-DEVELOPED CONDITIONS - PMF



**ST LEONARDS HEALTH ORGANISATION RELOCATION  
FLOODING ASSESSMENT**



- Afflux (m)**
- <math><-0.2</math>
  - 0.20 to -0.10
  - 0.10 to -0.01
  - 0.01 to 0.01
  - 0.01 to 0.02
  - 0.02 to 0.05
  - 0.05 to 0.10
  - 0.10 to 0.20
  - 0.20 to 0.30
  - 0.30 to 0.50
  - > 0.50
  - Land Rendered Flood Free as a Result of Change
  - Additional Area of Land Flooded as a Result of Change

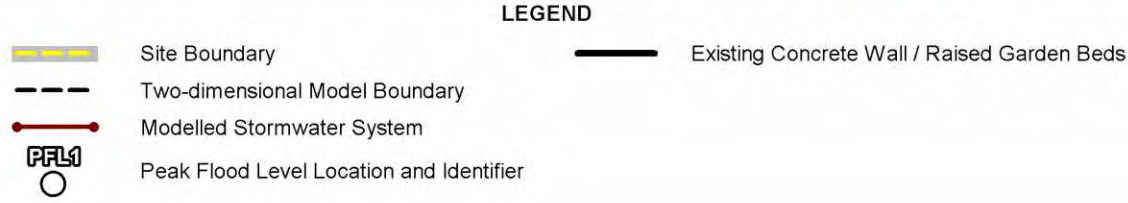
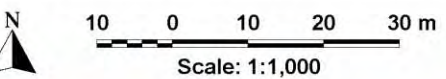
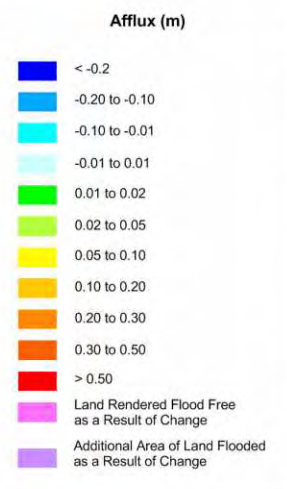
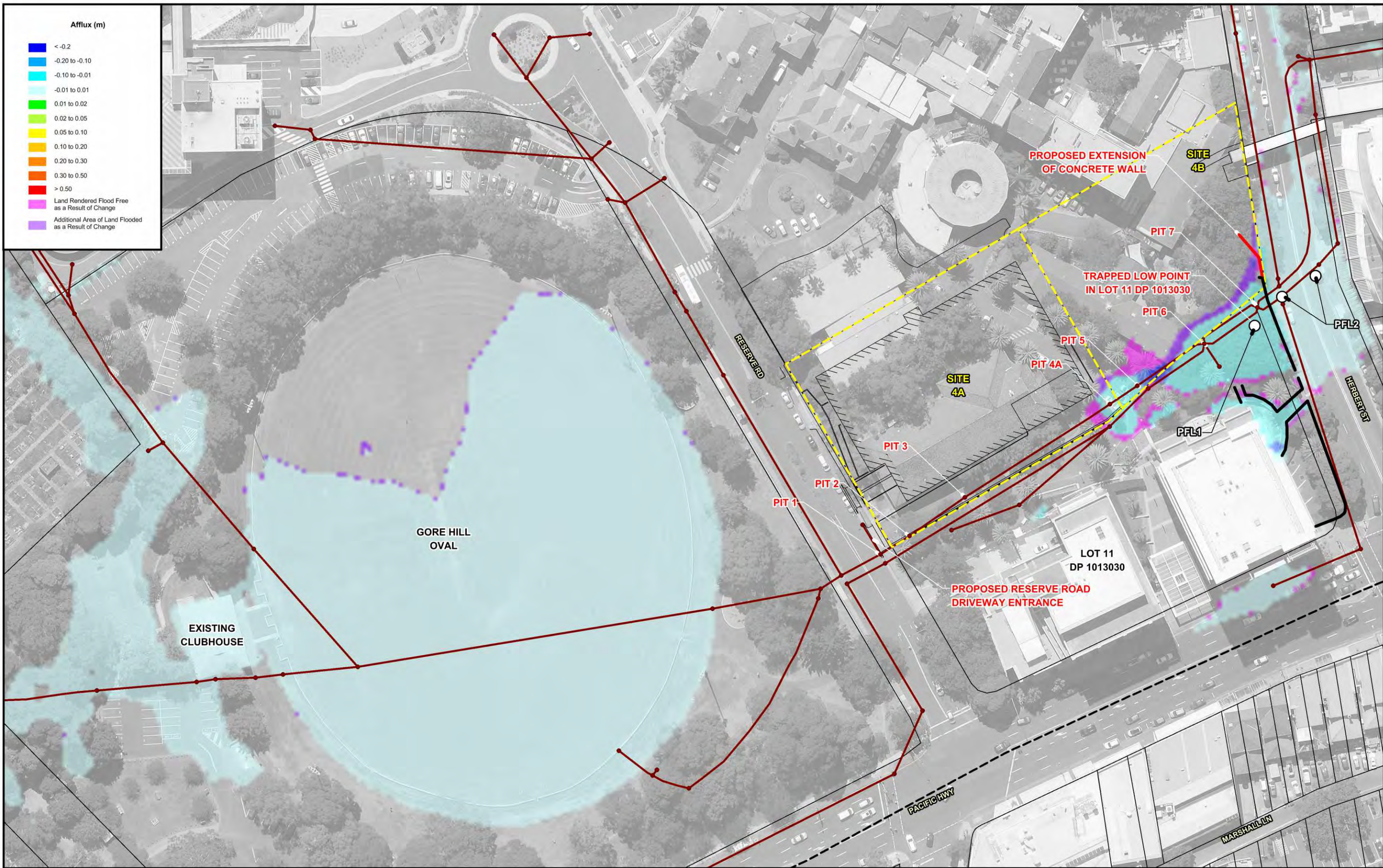


- LEGEND**
- Site Boundary
  - Two-dimensional Model Boundary
  - Modelled Stormwater System
  - Peak Flood Level Location and Identifier
  - Existing Concrete Wall / Raised Garden Beds

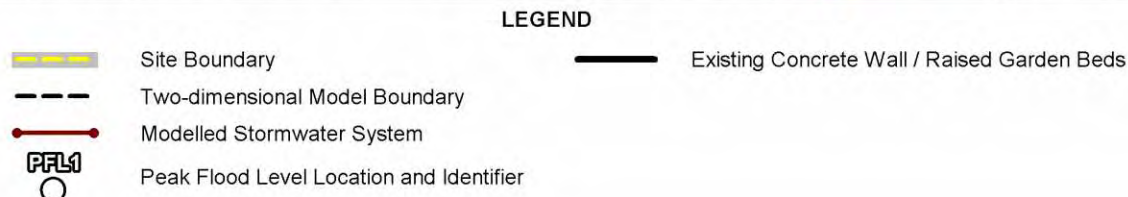
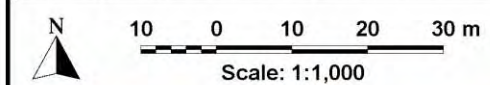
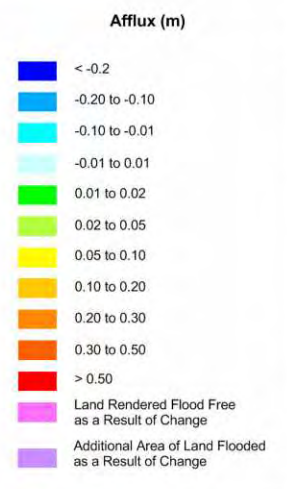
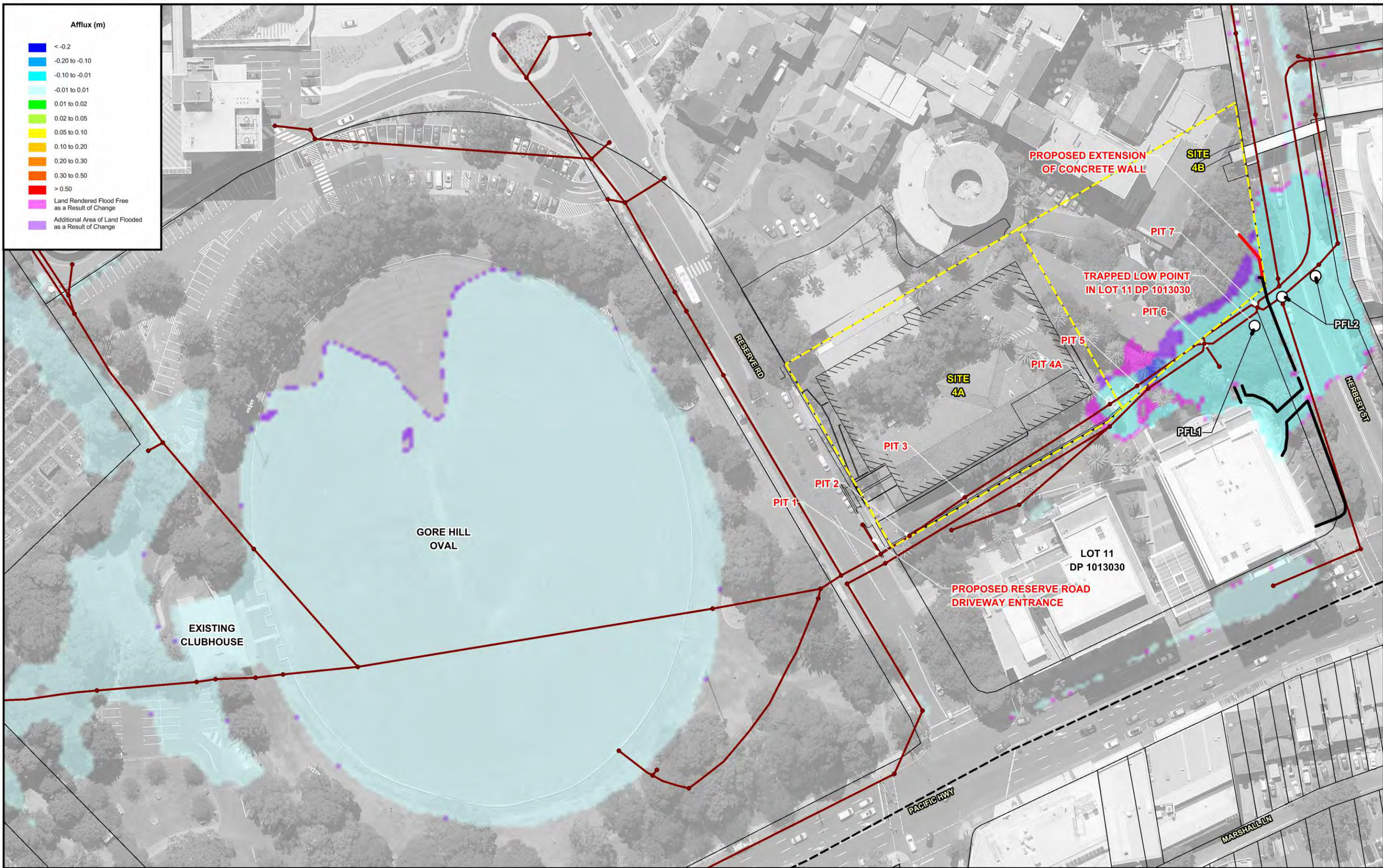
**ST LEONARDS HEALTH ORGANISATION RELOCATION  
FLOODING ASSESSMENT**



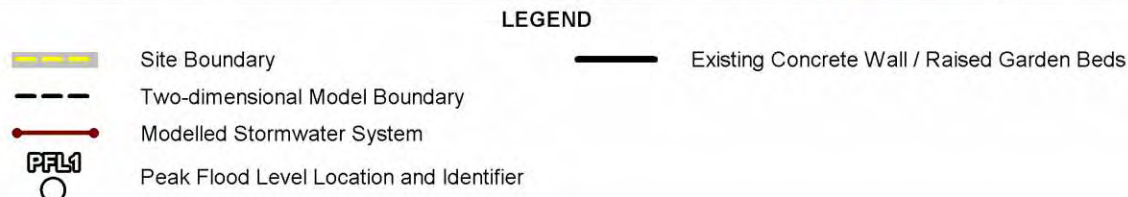
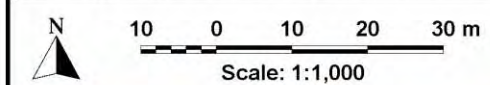
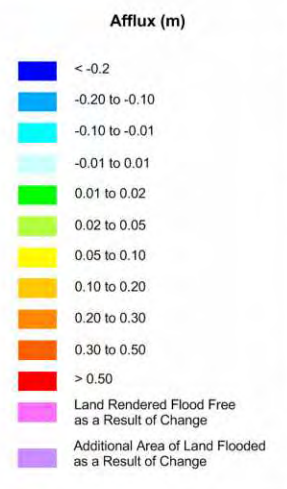
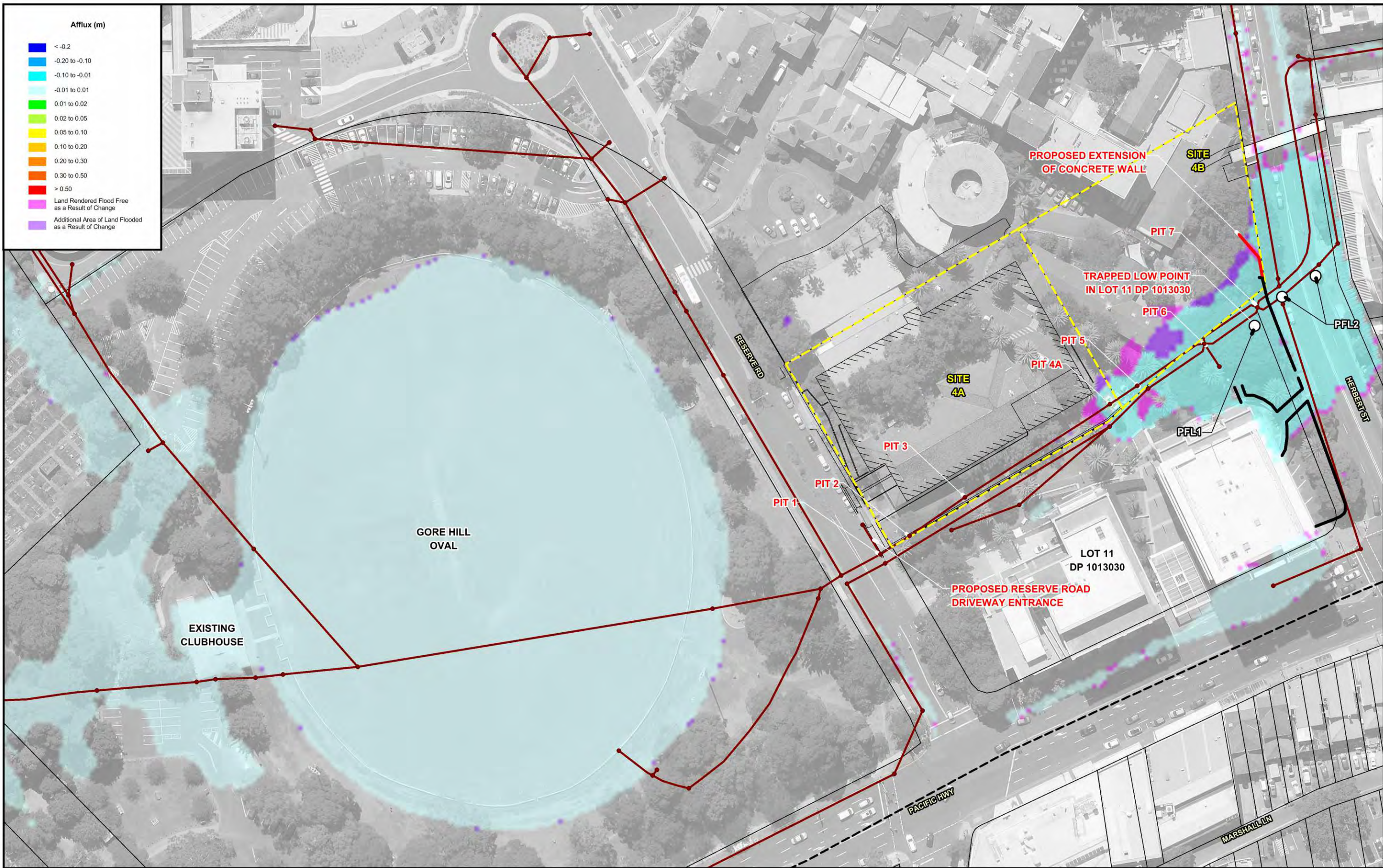
Figure 14  
IMPACT OF PROPOSED DEVELOPMENT ON PATTERNS OF OVERLAND FLOW  
POST-DEVELOPED CONDITIONS - 5% AEP



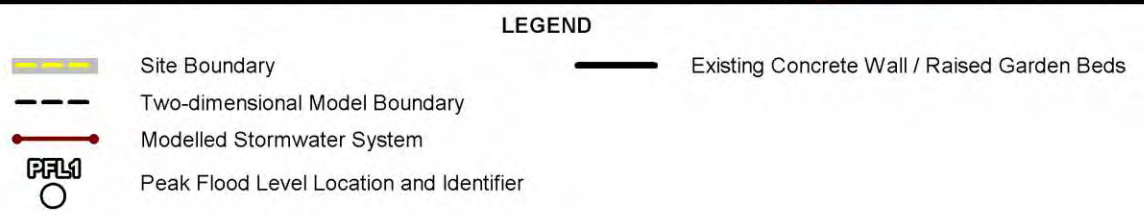
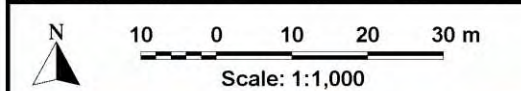
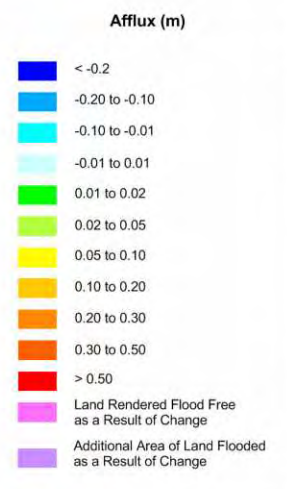
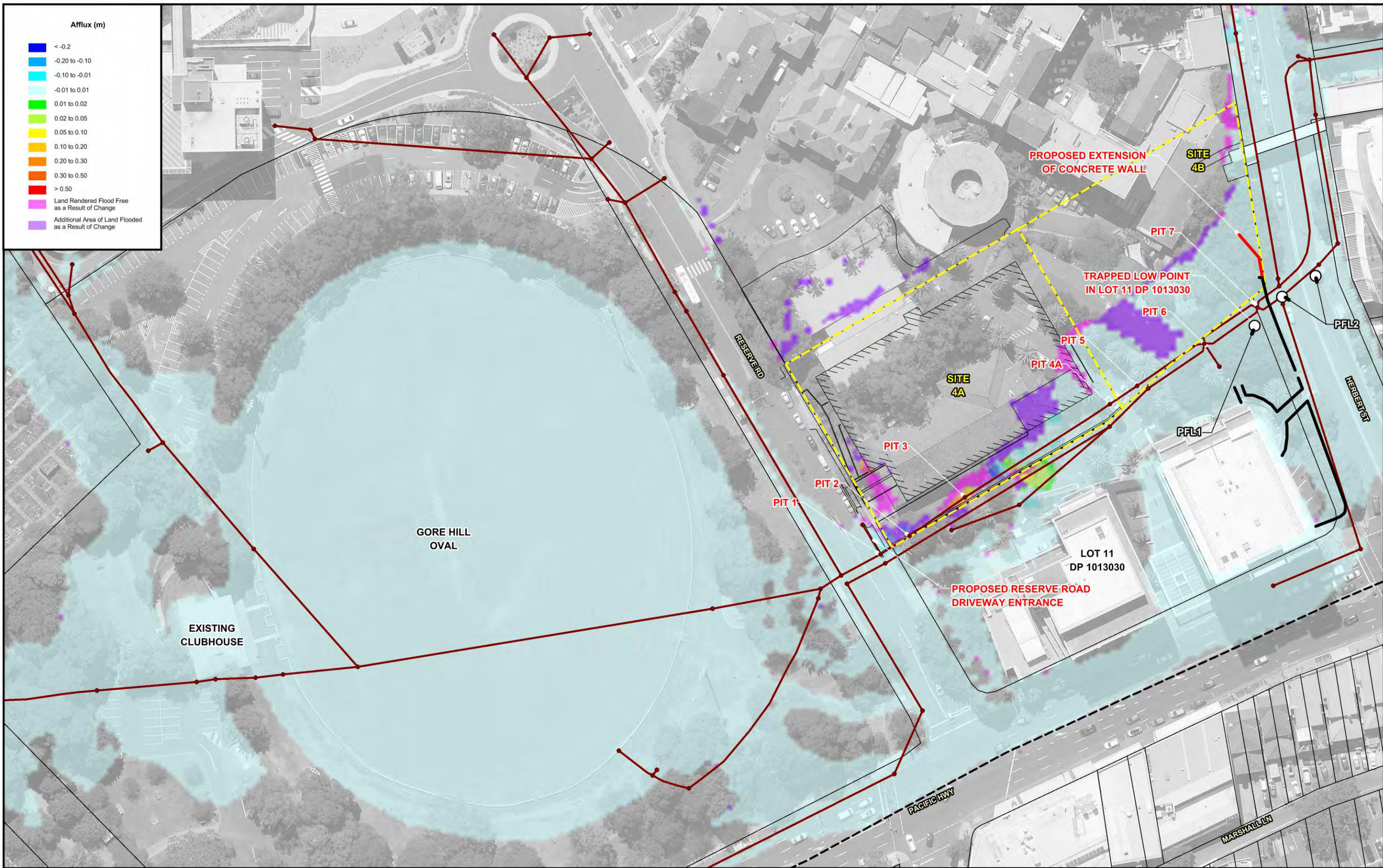
**ST LEONARDS HEALTH ORGANISATION RELOCATION  
FLOODING ASSESSMENT**



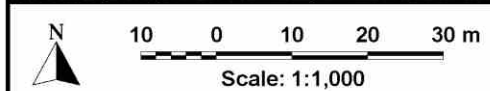
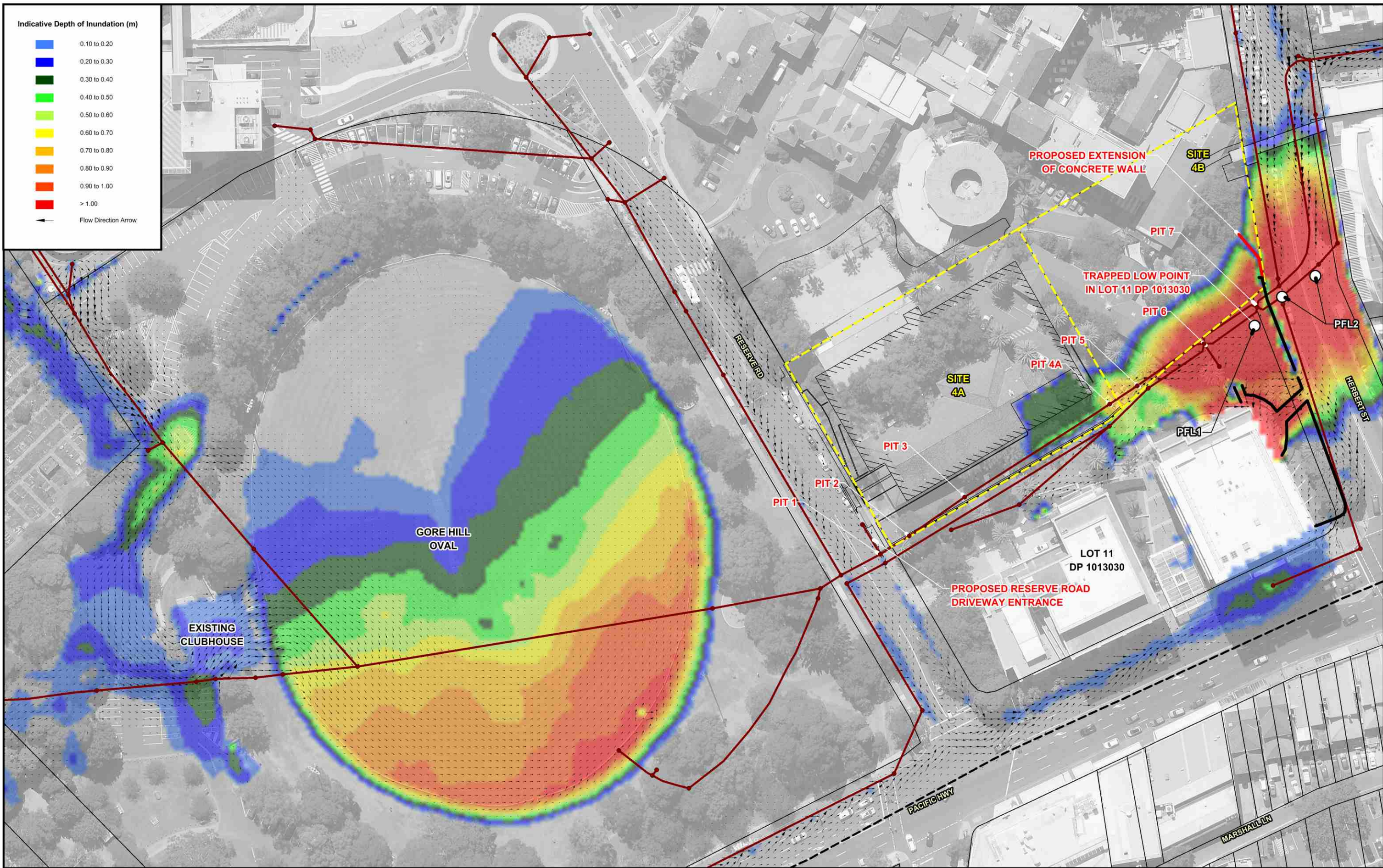
**ST LEONARDS HEALTH ORGANISATION RELOCATION  
FLOODING ASSESSMENT**



**ST LEONARDS HEALTH ORGANISATION RELOCATION  
FLOODING ASSESSMENT**



**ST LEONARDS HEALTH ORGANISATION RELOCATION  
FLOODING ASSESSMENT**



**LEGEND**

- Site Boundary
- Two-dimensional Model Boundary
- Modelled Stormwater System
- Existing Concrete Wall / Raised Garden Beds
- Peak Flood Level Location and Identifier

**ST LEONARDS HEALTH ORGANISATION RELOCATION  
FLOODING ASSESSMENT**

Figure 19  
PATTERNS OF OVERLAND FLOW IN VICINITY OF DEVELOPMENT SITE  
POST-DEVELOPED CONDITIONS (100% BLOCKAGE OF PIPED DRAINAGE SYSTEM) - 20% AEP