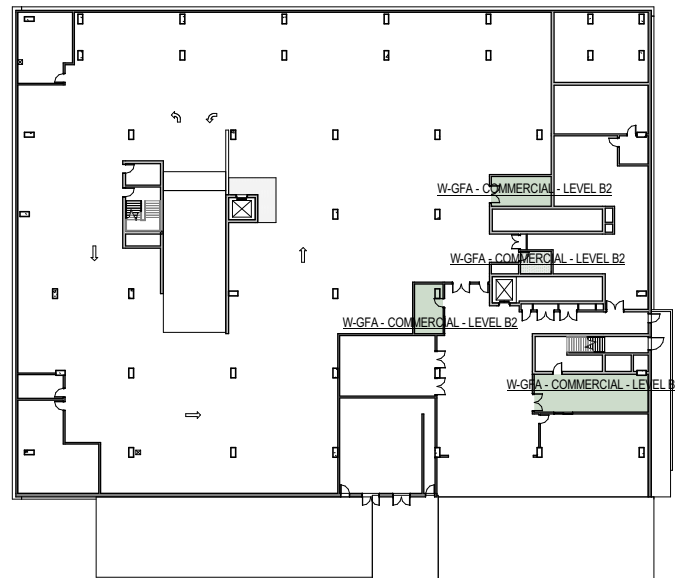


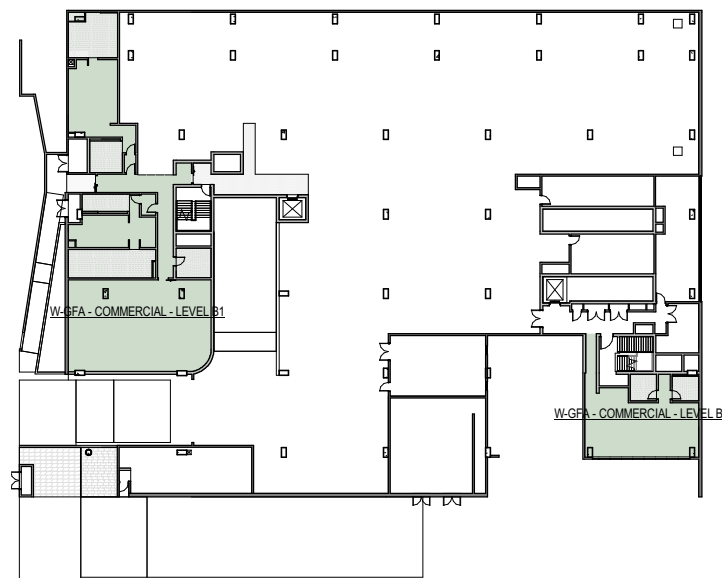
INTELLECTUAL PROPERTY
COPYRIGHT BVM ARCHITECTURE PTY LIMITED. UNLESS OTHERWISE AGREED IN WRITING, RIGHTS TO THIS DOCUMENT ARE SUBJECT TO PAYMENT IN FULL OF ALL BVM CHARGES. THIS DOCUMENT MAY ONLY BE USED FOR THE EXPRESS PURPOSE AND PROJECT FOR WHICH IT HAS BEEN CREATED AND DELIVERED. AS NOTIFIED IN WRITING BY BVM AND THIS DOCUMENT MAY NOT BE, REPRODUCED, COPIED, OR STORED IN ANY UNAUTHORIZED USE OF THIS DOCUMENT IS AT THE USER'S SOLE RISK AND WITHOUT LIMITING BVM'S RIGHTS, THE USER RELEASES AND INDEMNIFIES BVM FROM AND AGAINST ALL LOSS OR ARISING.

NOTE
CONTRACTOR TO CHECK AND VERIFY ALL DIMENSIONS ON SITE PRIOR TO COMMENCEMENT OF WORK OR PREPARATION OF SHOP DRAWINGS. DO NOT SCALE THIS DRAWING.

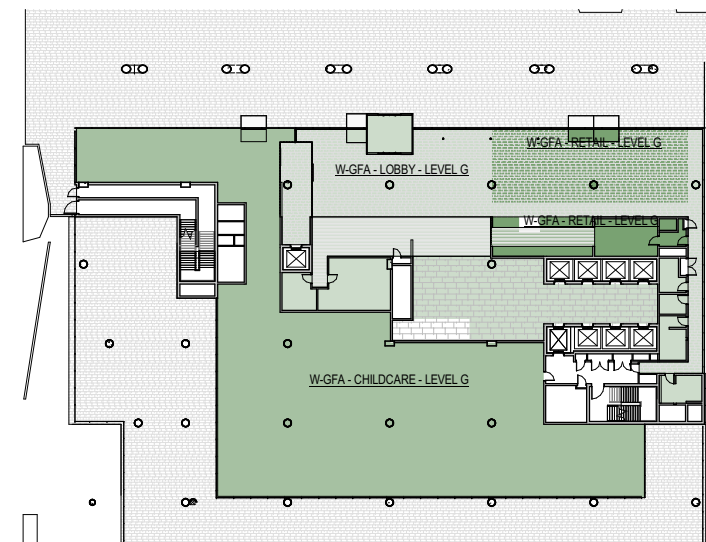
ISSUE	DATE	FOR
A	02.03.17	TENDER ISSUE
B	13.12.17	SSD 27000A SCHEME



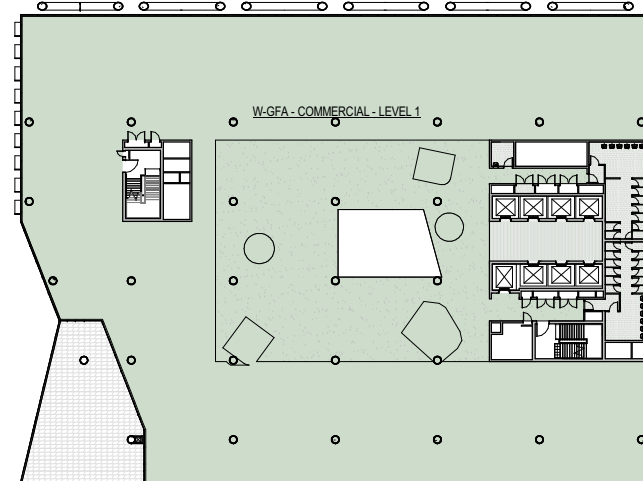
1 LEVEL B2



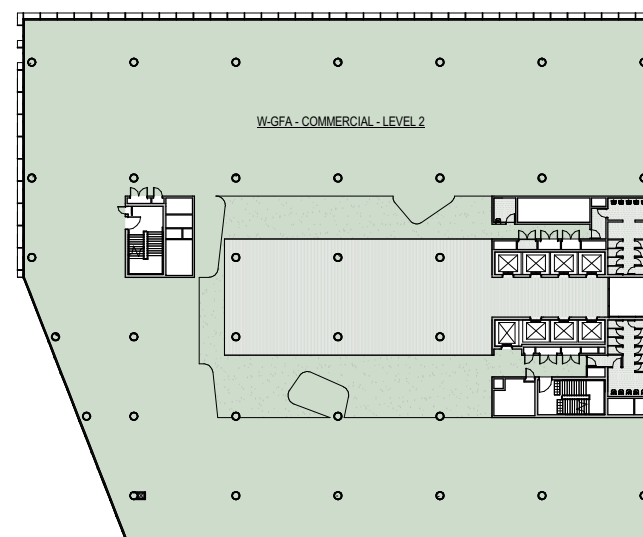
2 LEVEL B1



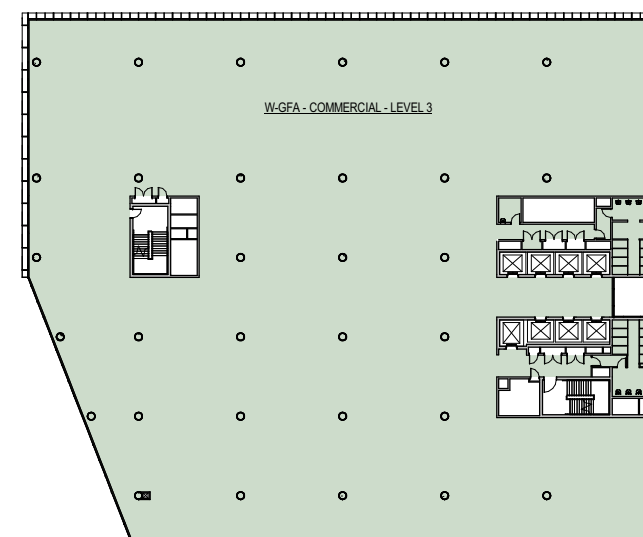
3 LEVEL G



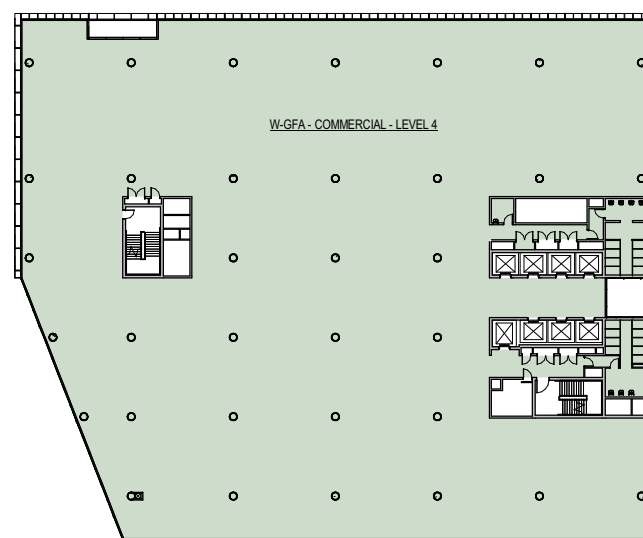
4 LEVEL 01



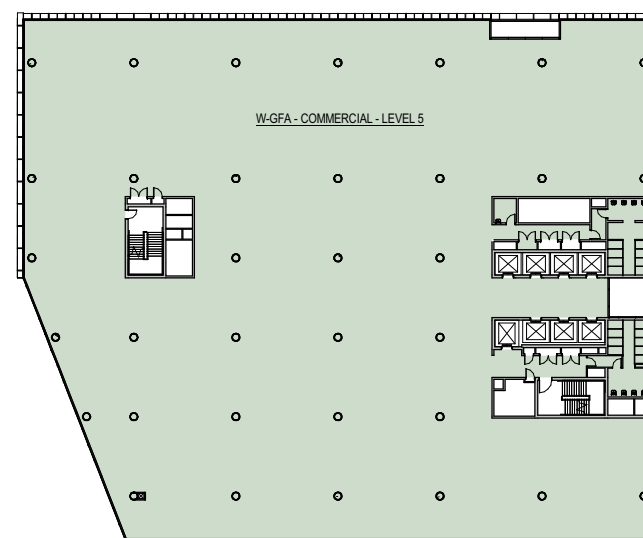
5 LEVEL 02



6 LEVEL 03



7 LEVEL 04



8 LEVEL 05

NOTE:
STATUTORY GROSS FLOOR AREA DEFINITION

AS DEFINED BY WLEP, GROSS FLOOR AREA MEANS THE SUM OF THE FLOOR AREA OF EACH FLOOR OF A BUILDING MEASURED FROM THE INTERNAL FACE OF EXTERNAL WALLS, OR FROM THE INTERNAL FACE OF WALLS SEPARATING THE BUILDING FROM ANY OTHER BUILDING, MEASURED AT A HEIGHT OF 1.4 METRES ABOVE THE FLOOR, AND INCLUDES:

- A) THE AREA OF A MEZZANINE, AND
- B) HABITABLE ROOMS IN A BASEMENT OR AN ATTIC, AND
- C) ANY SHOP, AUDITORIUM, CINEMA, AND THE LIKE, IN A BASEMENT OR ATTIC.

BUT EXCLUDES:

- D) ANY AREA FOR COMMON VERTICAL CIRCULATION, SUCH AS LIFTS AND STAIRS, AND
- E) ANY BASEMENT:
 - i) STORAGE, AND
 - ii) VEHICULAR ACCESS, LOADING AREAS, GARBAGE AND SERVICES, AND
- F) PLANT ROOMS, LIFT TOWERS AND OTHER AREAS USED EXCLUSIVELY FOR MECHANICAL SERVICES OR DUCTING, AND
- G) CAR PARKING TO MEET ANY REQUIREMENTS OF THE CONSENT AUTHORITY (INCLUDING ACCESS TO THAT CAR PARKING), AND ANY SPACE USED FOR THE LOADING OR UNLOADING OF GOODS (INCLUDING ACCESS TO IT), AND
- H) ANY SPACE USED FOR THE LOADING OR UNLOADING OF GOODS (INCLUDING ACCESS TO IT), AND
- I) TERRACES AND BALCONIES WITH OUTER WALLS LESS THAN 1.4 METRES HIGH, AND
- J) VOIDS ABOVE A FLOOR AT THE LEVEL OF A STOREY OR STOREY ABOVE.

STRUCTURAL & CIVIL
ENSTRUCT

MECHANICAL, ELECTRICAL, DRY FIRE & ESD
WOOD & GRIEVE ENGINEERS

HYDRAULIC & WET FIRE
MEDLAND ENGINEERING

FAÇADE
SURFACE DESIGN

TRAFFIC
ASON GROUP

QUANTITY SURVEYOR
RIDER LEVETT BUCKNALL

VERTICAL TRANSPORTATION
NORMAN DISNEY & YOUNG

PROJECT MANAGER
SAVILLS PROJECT MANAGEMENT

CLIENT

HEALTH INFRASTRUCTURE NSW
PROJECT

ST LEONARDS HEALTH
ORGANISATIONS RELOCATION
(SHOR)
RNSH - ST LEONARDS, SYDNEY
BVM PROJECT NUMBER

1609521.000

DRAWING KEY

TRUE NORTH PROJECT NORTH

GRAPHIC SCALE

SCALE @ A1

1:400

SCALE @ A3

DO NOT SCALE

STATUS

FOR TENDER

DRAWING

AREA PLANS - LEVELS B2 -
05 - STATUTORY GFA

AR-R-XX-27

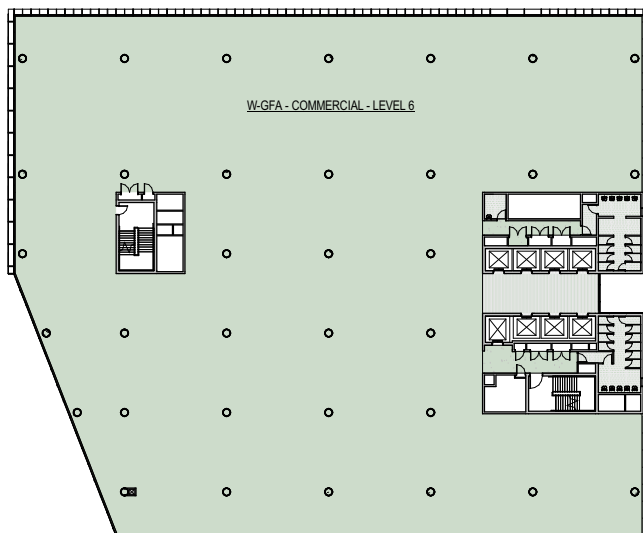
ISSUE

B

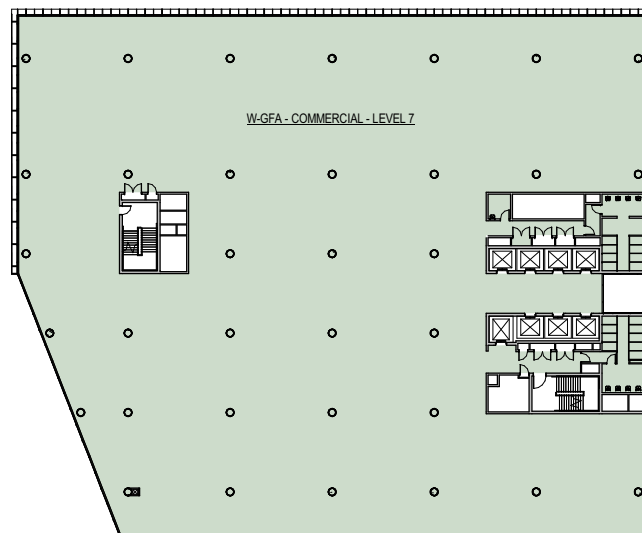
INTELLECTUAL PROPERTY
COPYRIGHT BVM ARCHITECTURE PTY LIMITED. UNLESS OTHERWISE AGREED IN WRITING, RIGHTS TO THIS DOCUMENT ARE SUBJECT TO PAYMENT IN FULL OF ALL BVM CHARGES. THIS DOCUMENT MAY ONLY BE USED FOR THE EXPRESS PURPOSE AND PROJECT FOR WHICH IT HAS BEEN CREATED AND DELIVERED. AS NOTIFIED IN WRITING BY BVM AND THIS DOCUMENT MAY NOT BE, CHANGED, USED, OR COPIED IN ANY UNAUTHORISED USE OF THIS DOCUMENT IS AT THE USER'S SOLE RISK AND WITHOUT LIMITING BVM'S RIGHTS THE USER RELEASES AND INDEMNIFIES BVM FROM AND AGAINST ALL LOSS SO ARISING.

NOTE
CONTRACTOR TO CHECK AND VERIFY ALL DIMENSIONS ON SITE PRIOR TO COMMENCEMENT OF WORK OR PREPARATION OF SHOP DRAWINGS. DO NOT SCALE THIS DRAWING.

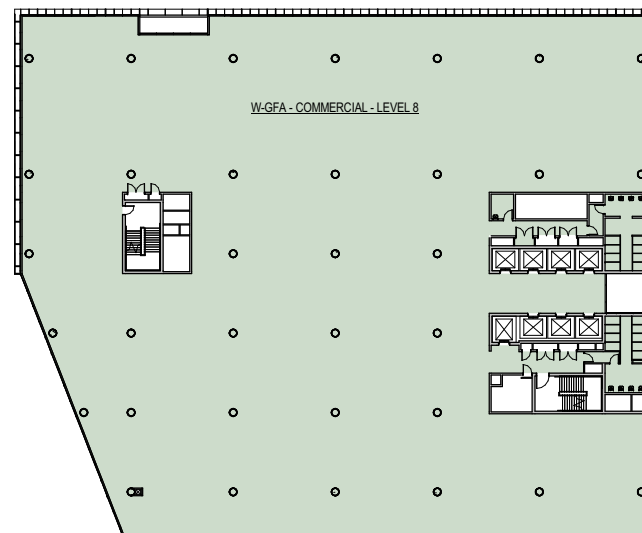
ISSUE	DATE	FOR
A	02.03.17	TENDER ISSUE
B	13.12.17	SSD 270000A SCHEME



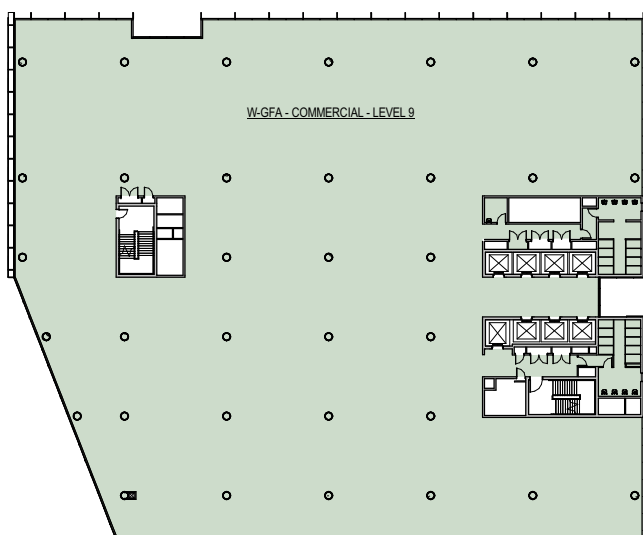
1 LEVEL 06



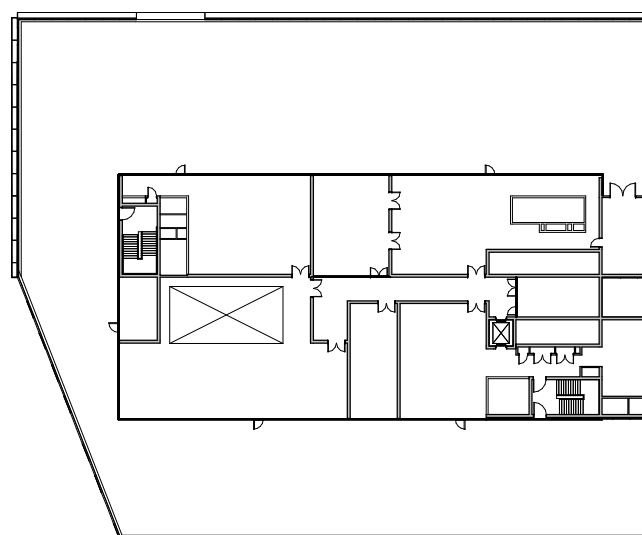
2 LEVEL 07



3 LEVEL 08



4 LEVEL 09



5 LEVEL 10

STATUTORY GFA SCHEDULE - NLA INCREASE

Level	Name	Area
LEVEL B2	W-GFA - COMMERCIAL - LEVEL B2	20 m ²
LEVEL B2	W-GFA - COMMERCIAL - LEVEL B2	8 m ²
LEVEL B2	W-GFA - COMMERCIAL - LEVEL B2	48 m ²
LEVEL B2	W-GFA - COMMERCIAL - LEVEL B2	16 m ²
LEVEL B1	W-GFA - COMMERCIAL - LEVEL B1	362 m ²
LEVEL B1	W-GFA - COMMERCIAL - LEVEL B1	106 m ²
LEVEL G	W-GFA - CHILDCARE - LEVEL G	902 m ²
LEVEL G	W-GFA - LOBBY - LEVEL G	658 m ²
LEVEL G	W-GFA - RETAIL - LEVEL G	161 m ²
LEVEL G	W-GFA - RETAIL - LEVEL G	80 m ²
LEVEL 01	W-GFA - COMMERCIAL - LEVEL 1	2755 m ²
LEVEL 02	W-GFA - COMMERCIAL - LEVEL 2	3240 m ²
LEVEL 03	W-GFA - COMMERCIAL - LEVEL 3	3240 m ²
LEVEL 04	W-GFA - COMMERCIAL - LEVEL 4	3225 m ²
LEVEL 05	W-GFA - COMMERCIAL - LEVEL 5	3225 m ²
LEVEL 06	W-GFA - COMMERCIAL - LEVEL 6	3240 m ²
LEVEL 07	W-GFA - COMMERCIAL - LEVEL 7	3240 m ²
LEVEL 08	W-GFA - COMMERCIAL - LEVEL 8	3225 m ²
LEVEL 09	W-GFA - COMMERCIAL - LEVEL 9	3225 m ²
GRAND TOTAL: 19		30977 m ²

STATUTORY GFA SCHEDULE - NLA INCREASE

Level	Name	Area
-------	------	------

NOTE:
STATUTORY GROSS FLOOR AREA DEFINITION

AS DEFINED BY WLEP, GROSS FLOOR AREA MEANS THE SUM OF THE FLOOR AREA OF EACH FLOOR OF A BUILDING MEASURED FROM THE INTERNAL FACE OF EXTERNAL WALLS, OR FROM THE INTERNAL FACE OF WALLS SEPARATING THE BUILDING FROM ANY OTHER BUILDING, MEASURED AT A HEIGHT OF 1.4 METRES ABOVE THE FLOOR, AND INCLUDES:

- A) THE AREA OF A MEZZANINE, AND
 - B) HABITABLE ROOMS IN A BASEMENT OR AN ATTIC, AND
 - C) ANY SHOP, AUDITORIUM, CINEMA, AND THE LIKE, IN A BASEMENT OR ATTIC.
- BUT EXCLUDES:**
- D) ANY AREA FOR COMMON VERTICAL CIRCULATION, SUCH AS LIFTS AND STAIRS, AND
 - E) ANY BASEMENT:
 - i) STORAGE, AND
 - ii) VEHICULAR ACCESS, LOADING AREAS, GARBAGE AND SERVICES, AND
 - F) PLANT ROOMS, LIFT TOWERS AND OTHER AREAS USED EXCLUSIVELY FOR MECHANICAL SERVICES OR DUCTING, AND
 - G) CAR PARKING TO MEET ANY REQUIREMENTS OF THE CONSENT AUTHORITY (INCLUDING ACCESS TO THAT CAR PARKING), AND ANY SPACE USED FOR THE LOADING OR UNLOADING OF GOODS (INCLUDING ACCESS TO IT), AND
 - H) ANY SPACE USED FOR THE LOADING OR UNLOADING OF GOODS (INCLUDING ACCESS TO IT), AND
 - I) TERRACES AND BALCONIES WITH OUTER WALLS LESS THAN 1.4 METRES HIGH, AND
 - J) VOIDS ABOVE A FLOOR AT THE LEVEL OF A STOREY OR STOREY ABOVE.

STRUCTURAL & CIVIL
ENSTRUCT

MECHANICAL, ELECTRICAL, DRY FIRE & ESD
WOOD & GRIEVE ENGINEERS

HYDRAULIC & WET FIRE
MEDLAND ENGINEERING

FAÇADE
SURFACE DESIGN

TRAFFIC
ASON GROUP

QUANTITY SURVEYOR
RIDER LEVETT BUCKNALL

VERTICAL TRANSPORTATION
NORMAN DISNEY & YOUNG

PROJECT MANAGER
SAVILLS PROJECT MANAGEMENT

CLIENT

HEALTH INFRASTRUCTURE NSW
PROJECT

ST LEONARDS HEALTH
ORGANISATIONS RELOCATION
(SHOR)
RNSH - ST LEONARDS, SYDNEY

BVM PROJECT NUMBER

1609521.000

DRAWING KEY

TRUE NORTH PROJECT NORTH

GRAPHIC SCALE

SCALE @ A1

1:400

SCALE @ A3

DO NOT SCALE

STATUS

FOR TENDER

DRAWING

AREA PLANS - LEVELS 06 - 10
- STATUTORY GFA

AR-R-XX-28	ISSUE B
------------	------------



Telephone +61 7 3852 2525
Facsimile +61 7 3852 2544
www.bvm.com.au

INTELLECTUAL PROPERTY
COPYRIGHT BVM ARCHITECTURE PTY LIMITED. UNLESS OTHERWISE
AGREED IN WRITING, ALL RIGHTS TO THIS DOCUMENT ARE SUBJECT TO
PAYMENT IN FULL OF ALL BVM CHARGES. THIS DOCUMENT MAY ONLY BE
USED FOR THE EXPRESS PURPOSE AND PROJECT FOR WHICH IT HAS
BEEN CREATED AND DELIVERED. AS NOTIFIED IN WRITING BY BVM AND
THIS DOCUMENT MAY NOT BE, CHANGED, REPRODUCED, COPIED, OR ANY
UNAUTHORIZED USE OF THIS DOCUMENT IS AT THE USER'S SOLE RISK
AND WITHOUT LIMITING BVM'S RIGHTS, THE USER RELEASES AND
INDEMNIFIES BVM FROM AND AGAINST ALL LOSS OR ARISING.

NOTE
CONTRACTOR TO CHECK AND VERIFY ALL DIMENSIONS ON SITE PRIOR TO
COMMENCEMENT OF WORK OR PREPARATION OF SHOP DRAWINGS. DO NOT
SCALE THIS DRAWING.

ISSUE	DATE	FOR
A	02.03.17	TENDER ISSUE
B	29.06.17	WCC GFA ADDED
C	08.11.17	WCC GFA ADDED
D	13.12.17	SSD 27000NLA SCHEME

STRUCTURAL & CIVIL

ENSTRUCT

MECHANICAL, ELECTRICAL, DRY FIRE & ESD
WOOD & GRIEVE ENGINEERS

HYDRAULIC & WET FIRE
MEDLAND ENGINEERING

FAÇADE
SURFACE DESIGN

TRAFFIC
ASON GROUP

QUANTITY SURVEYOR
RIDER LEVETT BUCKNALL

VERTICAL TRANSPORTATION
NORMAN DISNEY & YOUNG

PROJECT MANAGER
SAVILLS PROJECT MANAGEMENT

CLIENT

HEALTH INFRASTRUCTURE NSW
PROJECT

ST LEONARDS HEALTH
ORGANISATIONS RELOCATION
(SHOR)
RNSH - ST LEONARDS, SYDNEY

BVM PROJECT NUMBER

1609521.000

DRAWING KEY

TRUE NORTH PROJECT NORTH



GRAPHIC SCALE

SCALE @ A1

1 : 200

SCALE @ A3

DO NOT SCALE

STATUS

FOR TENDER

DRAWING

AREA PLANS - SCHEDULES

AREA PLANS - SCHEDULES	ISSUE
AR-R-XX-29	D

GBA SCHEDULE - NLA INCREASE

Level	Name	Area
LEVEL B2	GBA - LEVEL B2	3402 m ²
LEVEL B1	GBA - LEVEL B1	3116 m ²
LEVEL G	GBA - LEVEL G	3597 m ²
LEVEL 01	GBA - LEVEL 01	3243 m ²
LEVEL 02	GBA - LEVEL 02	3498 m ²
LEVEL 03	GBA - LEVEL 03	3498 m ²
LEVEL 04	GBA - LEVEL 04	3484 m ²
LEVEL 05	GBA - LEVEL 05	3484 m ²
LEVEL 06	GBA - LEVEL 06	3498 m ²
LEVEL 07	GBA - LEVEL 07	3498 m ²
LEVEL 08	GBA - LEVEL 08	3484 m ²
LEVEL 09	GBA - LEVEL 09	3484 m ²
LEVEL 10	GBA - LEVEL 10	3498 m ²
TOTAL		44784 m ²

GFA SCHEDULE - NLA INCREASE

Level	Name	Area
LEVEL B2	GFA - BASEMENT - LEVEL B2	3256 m ²
LEVEL B2	GFA - UCA - LEVEL B2	142 m ²
LEVEL B1	GFA - BASEMENT - LEVEL B1	3054 m ²
LEVEL B1	GFA - UCA - LEVEL B1	59 m ²
LEVEL G	GFA - GROUND FLOOR - LEVEL G	2145 m ²
LEVEL G	GFA - UCA - LEVEL G	692 m ²
LEVEL G	GFA - UCA - LEVEL G	715 m ²
LEVEL 01	GFA - COMMERCIAL - LEVEL 1	3079 m ²
LEVEL 01	GFA - UCA - LEVEL 1	71 m ²
LEVEL 02	GFA - COMMERCIAL - LEVEL 2	3499 m ²
LEVEL 03	GFA - COMMERCIAL - LEVEL 3	3499 m ²
LEVEL 04	GFA - COMMERCIAL - LEVEL 4	3484 m ²
LEVEL 05	GFA - COMMERCIAL - LEVEL 5	3484 m ²
LEVEL 06	GFA - COMMERCIAL - LEVEL 6	3499 m ²
LEVEL 07	GFA - COMMERCIAL - LEVEL 7	3499 m ²
LEVEL 08	GFA - COMMERCIAL - LEVEL 8	3502 m ²
LEVEL 09	GFA - COMMERCIAL - LEVEL 9	3484 m ²
LEVEL 10	GFA - PLANT - LEVEL 10	1201 m ²
GRAND TOTAL		42363 m ²

NLA SCHEDULE - NLA INCREASE

Level	Name	Area
01 RETAIL		
LEVEL G	NLA EXTERIOR - CHILDCARE - LEVEL G	191 m ²
LEVEL G	NLA - CAFE - LEVEL G	161 m ²
LEVEL G	NLA - CAFE - LEVEL G	81 m ²
LEVEL G	NLA - CHILDCARE - LEVEL G	896 m ²
LEVEL G	NLA EXTERIOR - CHILDCARE - LEVEL G	727 m ²
		2055 m ²
03 COMMERCIAL		
LEVEL 01	NLA - COMMERCIAL - LEVEL 1	2618 m ²
LEVEL 02	NLA - COMMERCIAL - LEVEL 2	3056 m ²
LEVEL 03	NLA - COMMERCIAL - LEVEL 3	3056 m ²
LEVEL 04	NLA - COMMERCIAL - LEVEL 4	3041 m ²
LEVEL 05	NLA - COMMERCIAL - LEVEL 5	3041 m ²
LEVEL 06	NLA - COMMERCIAL - LEVEL 6	3056 m ²
LEVEL 07	NLA - COMMERCIAL - LEVEL 7	3056 m ²
LEVEL 08	NLA - COMMERCIAL - LEVEL 8	3041 m ²
LEVEL 09	NLA - COMMERCIAL - LEVEL 9	3041 m ²
		27005 m ²
RETAIL AND OFFICE TOTAL		29060 m ²

COMBINED AREA SCHEDULE

LEVEL	GBA (m ²)	AIQS GFA (m ²)	Willoughby Council GFA (m ²)	Office NLA (m ²)	Retail NLA (m ²)	Efficiency % (NLA/GBA x 100)
BASEMENT 02	3402	-	92	-	-	-
BASEMENT 01	3116	-	469	-	-	-
GROUND	3597	3552	1801	-	1718	47.76%
LEVEL 01	3243	3150	2755	2618	-	80.73%
LEVEL 02	3498	3499	3240	3056	-	87.35%
LEVEL 03	3498	3499	3240	3056	-	87.35%
LEVEL 04	3484	3484	3225	3041	-	87.30%
LEVEL 05	3484	3484	3225	3041	-	87.29%
LEVEL 06	3498	3499	3240	3056	-	87.35%
LEVEL 07	3498	3499	3240	3056	-	87.35%
LEVEL 08	3484	3502	3225	3041	-	87.30%
LEVEL 09	3484	3484	3225	3041	-	87.30%
LEVEL 10 (PLANT)	-	-	-	-	-	-
TOTAL	41286	34650	30977	27005	1718	86.59%

AVERAGE TOTAL EFFICIENCY FOR OFFICE FLOORS (LEVELS 01 - 09)