

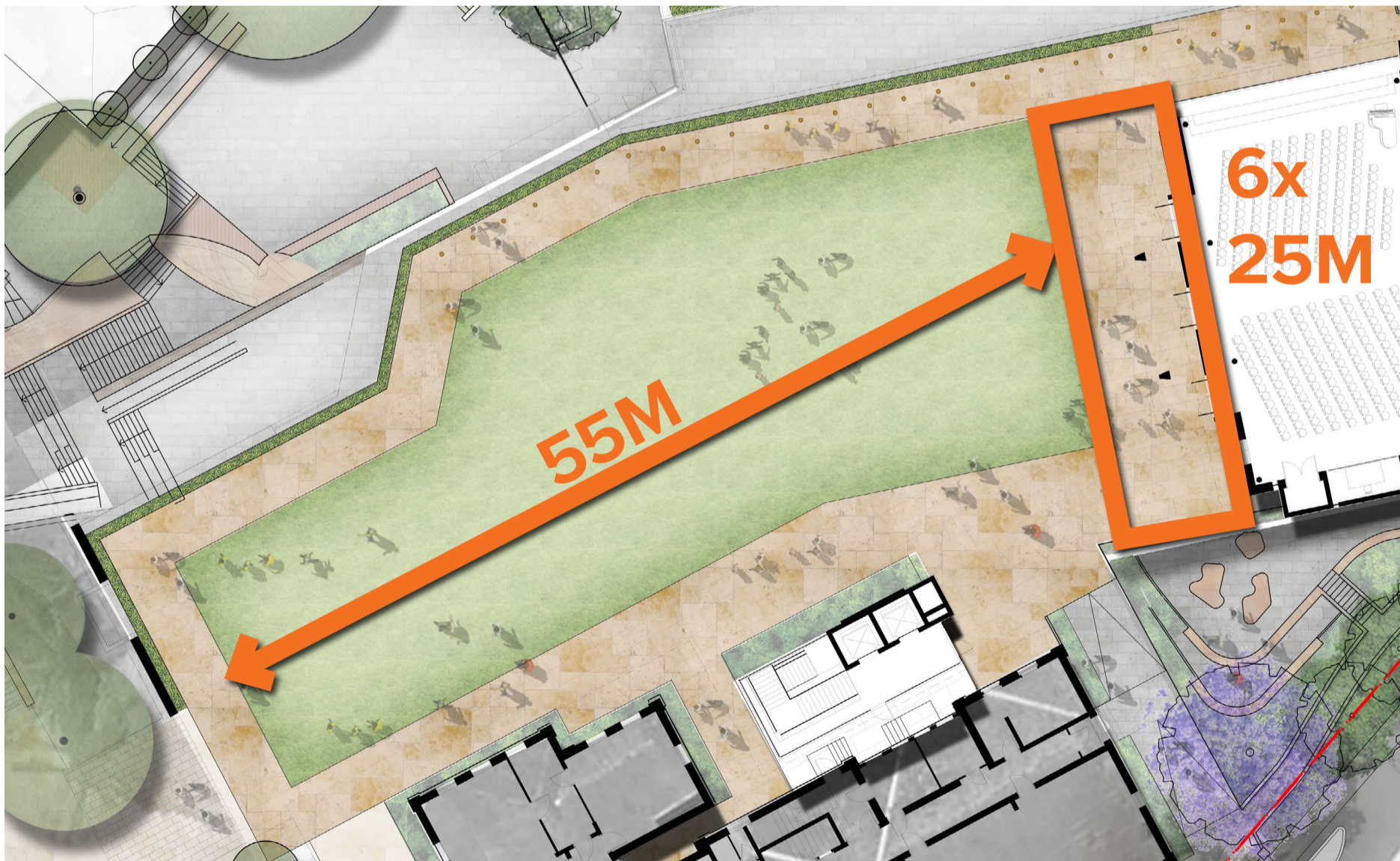
ZONE 1_CENTENARY BUILDING | KEY MOVES

PRINCIPLES

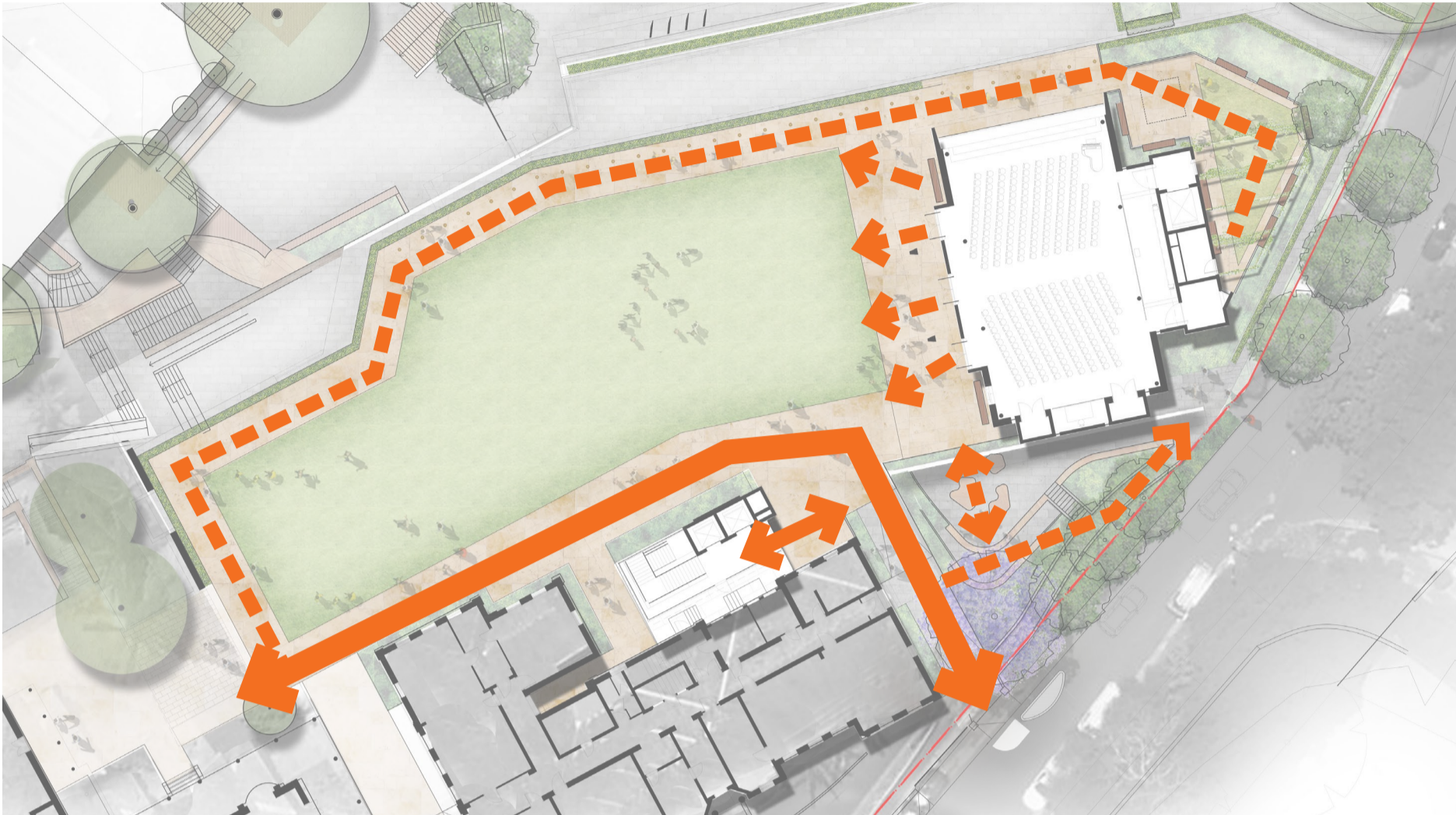
- // DELIVER FLEXIBLE SPACES
- // FACILITATE HUMAN MOVEMENT
- // OUTDOOR LEARNING OPPORTUNITIES
- // HERITAGE INTERFACE / INTEGRATION
- // VIEW CONSIDERATIONS

FLEXIBLE SPACES

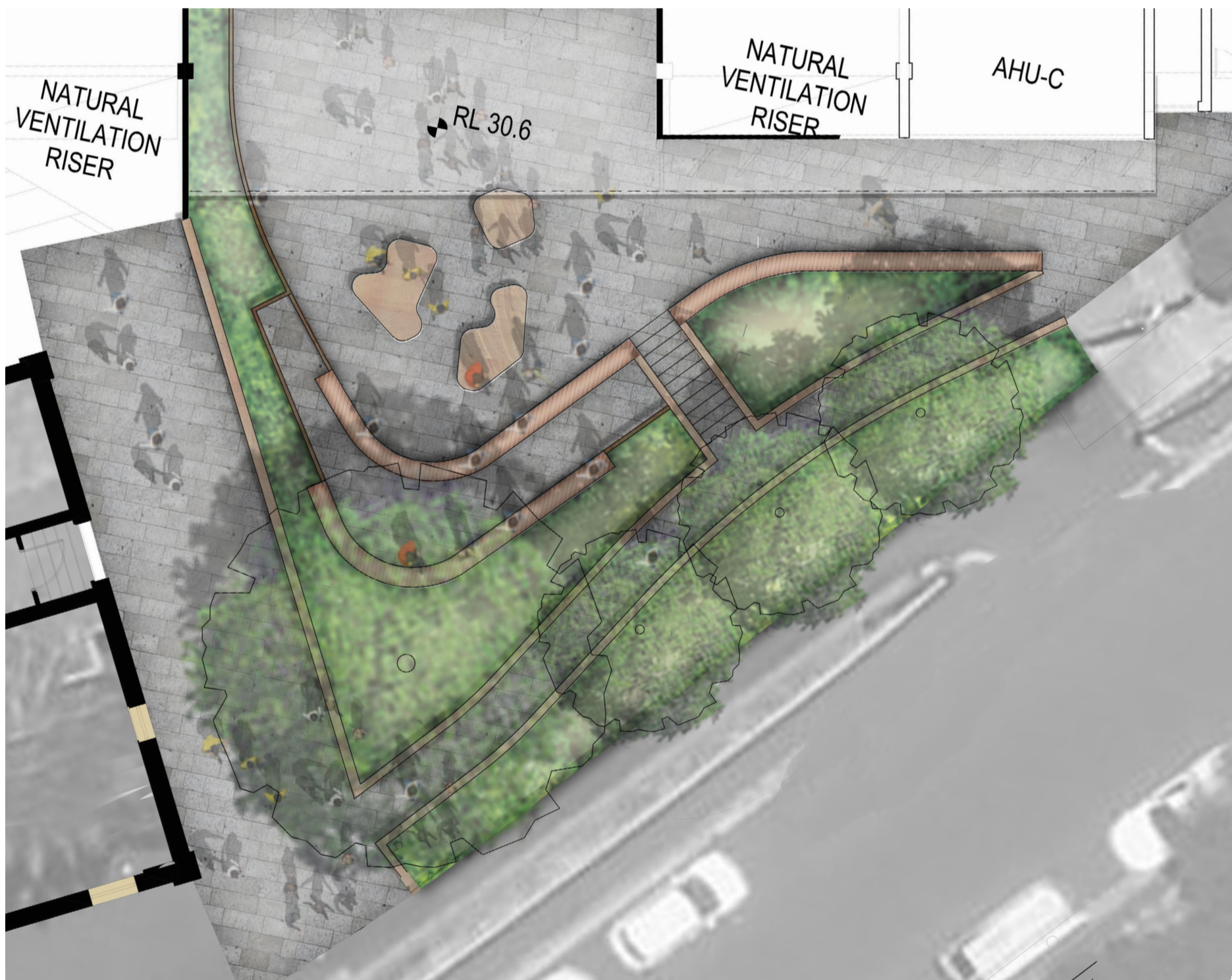
Spaces provided consider multiple users in their design. The landscape must cater for daily use by students but also for gatherings at the Chapel after school or on weekends. Flexibility of these spaces is paramount for future adaptability and events.



MOVEMENT



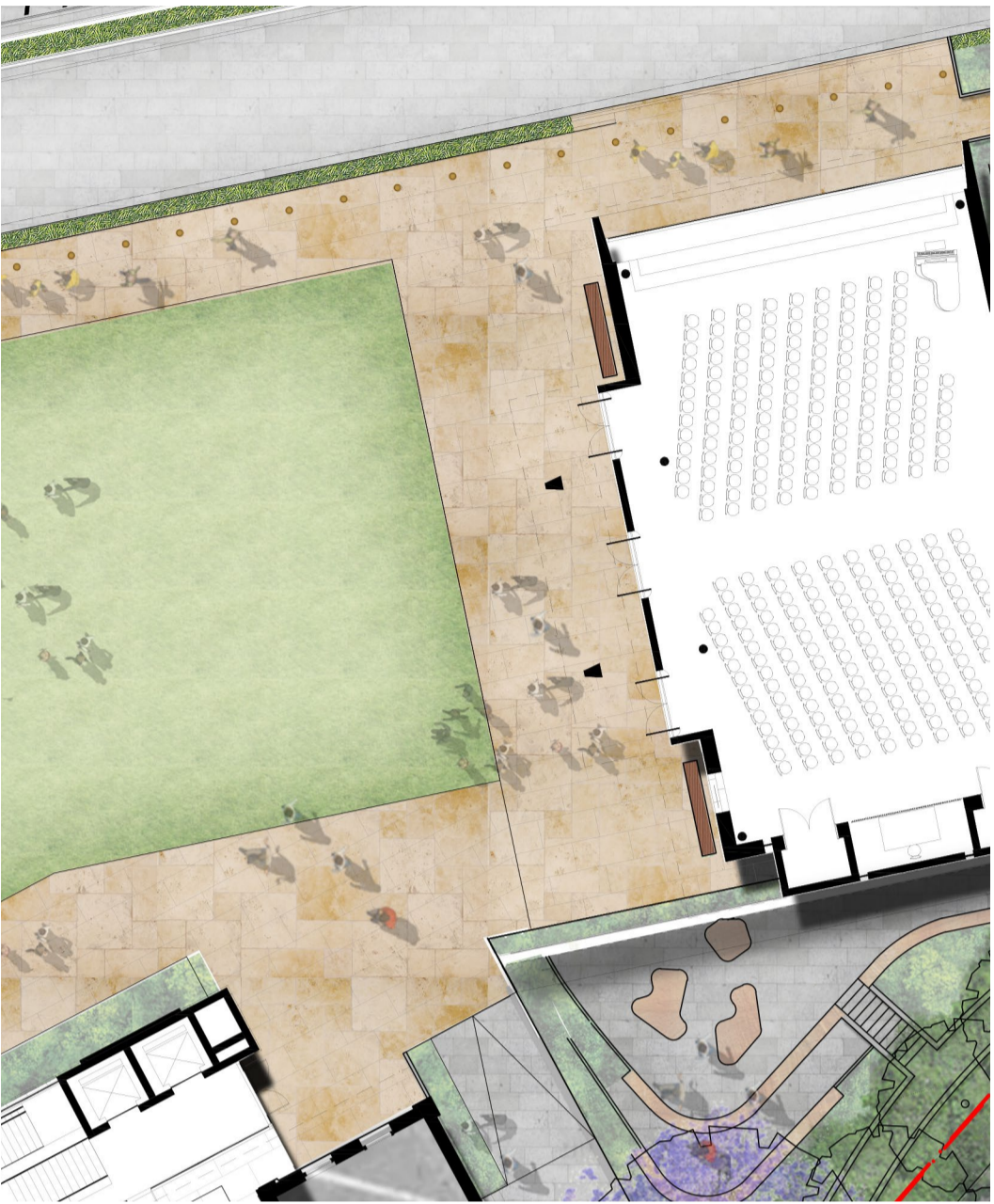
Formal and informal movement is facilitated across the zone with a wide berth provided around the vertical movement core of the new Centenary Building. Additional access between the Level Three courtyard and roof terrace is provided via a path and steps. Informal movement is encouraged across the robust sandstone terrain seating.



LEVEL 03 COURTYARD

HERITAGE

Reuse of sandstone paving lifted from the construction zone will assist in blending the old and the new. Additional garden bed planting is proposed to revitalise heritage interfaces.

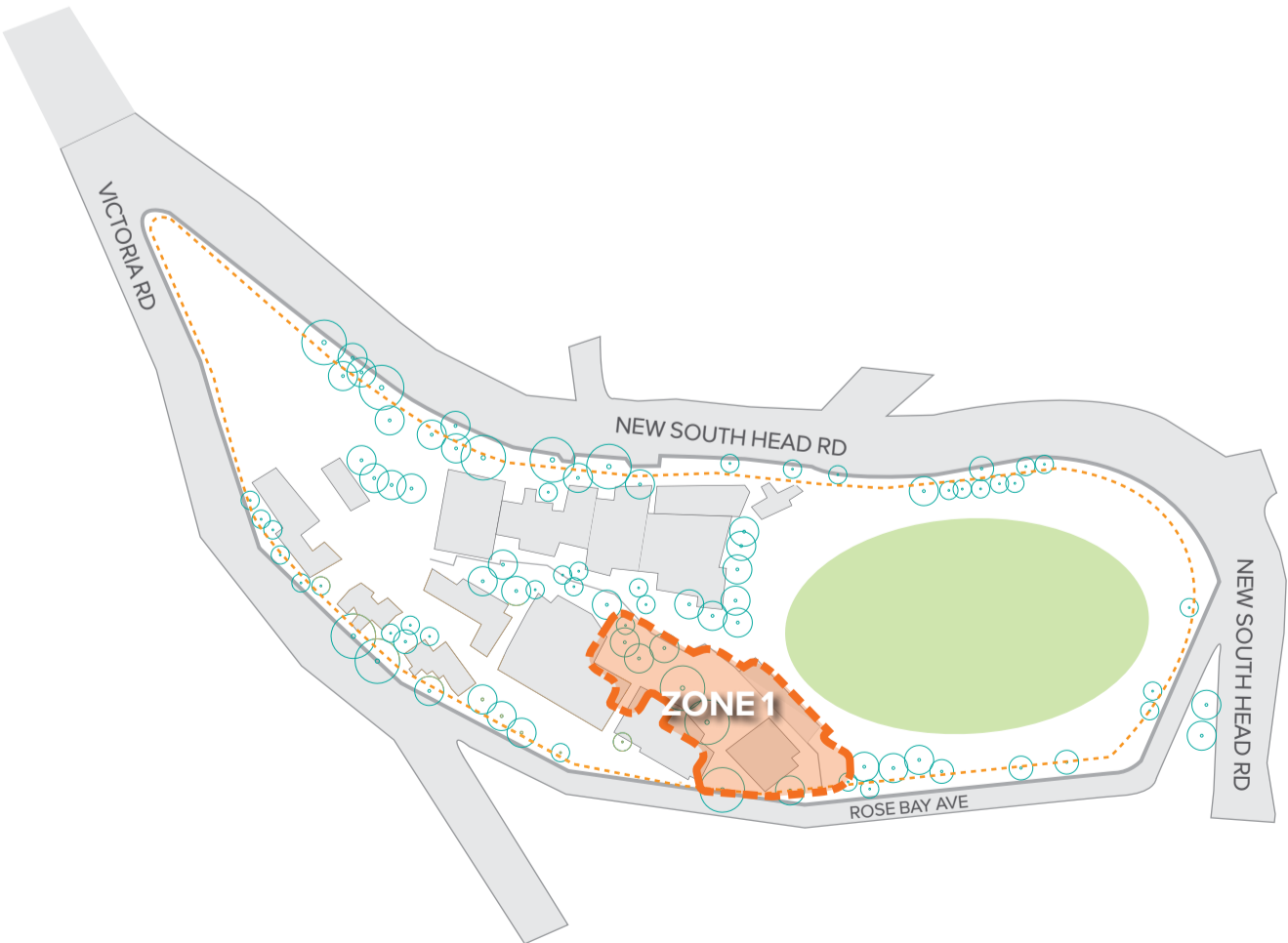


VIEWS

Harbour views are a feature of this space and are given priority with low level planting to the building edges

OUTDOOR LEARNING

Teaching opportunities are presented extending out from Level Three of the new Centenary Building through a stepped courtyard space. Incidental edges and sculptural sandstone elements allow for both class gathering and engagement in smaller groups.



ZONE 1_CENTENARY BUILDING | DETAIL PLAN

