

05

Concept Design Strategy

05.16

Environmental Considerations

The new learning building will include environmental strategies placed in highly visible locations to foster a culture of environmental sustainability

- Key strategies adopted in the new learning building include:
- PV system to offset the energy consumption of the new building as per EFSG requirements, placed in a highly visible location.
 - Auto Controlled Louvres to assist with cross ventilation of teaching spaces and purge warm air in the evening.
 - Sun control to reduce cooling loads on the building and increase user comfort.
 - Compost/Vegetable Gardens to encourage student engagement with sustainable practices.
 - Water tanks to capture rainwater for reuse on-site.
 - Native planting to contribute to the surrounding natural ecology
 - Re-using natural site elements such as trees and stones in the landscape and site works.



Sun Control

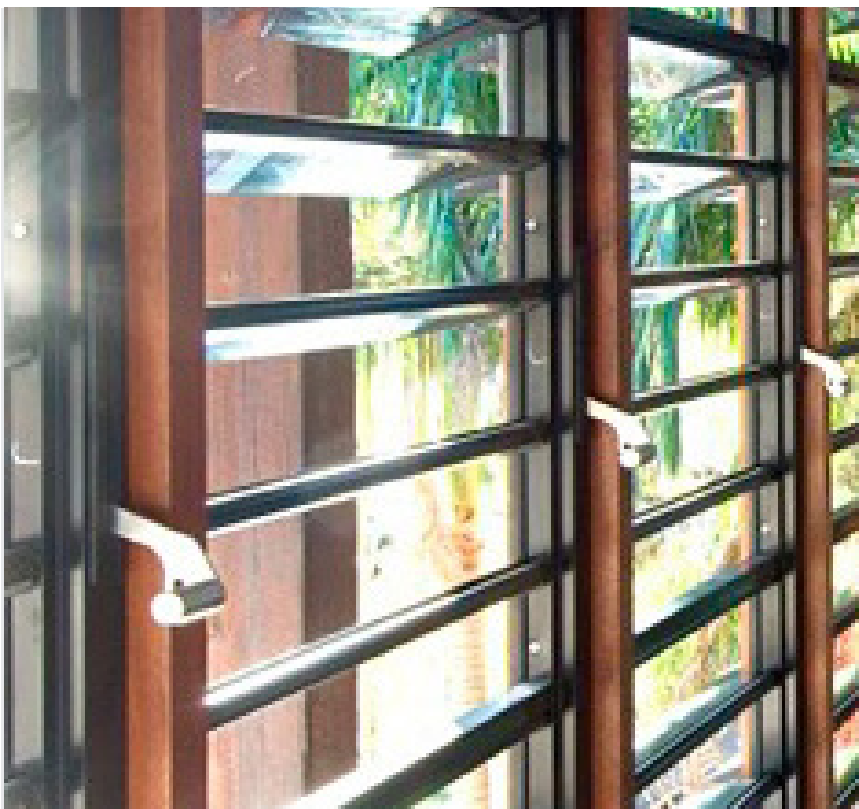


Solar Power

Native Planting + Fauna Habitat



Louvers (Auto Control and Manual)



05

Concept Design Strategy

05.17

Building as a Learning Tool

The new learning communities will include built-in strategies for the whole building to act as a tool for education.

- Key strategies adopted in the new learning building include:
- Graphics including Heights on Walls, Super-graphics in walls, and Way-finding on Floor.
 - Writable surfaces on some walls.
 - Solar Panels in visible locations with linked Energy consumption LCD display.
 - Exposed engineering systems for use as education tool.
 - Textures on walls



● Colour coded service pipes



● Visible Solar Panels



● Rainwater Tanks + Kitchen Gardens

