

Mr Dominic Crinnion
Team Leader
Ports and Water Assessments
Department of Planning and Environment
GPO Box 39
Sydney NSW 2001

Dear Mr Crinnion

**Parkes - Proposed Freight Transport facility National Logistics Hub (SSD 8788)
Request for SEARs**

Thank you for your recent correspondence requesting Transport for NSW (TfNSW) provide input to the Secretary's Environmental Assessment Requirements (SEARs) for the proposed development mentioned above. Please note that this is a combined response of TfNSW and Roads and Maritime Services, referred to collectively as TfNSW.

The supporting documents have been reviewed and the following comments are provided for your consideration to be included in the SEARs:

Traffic and Transport Impacts:

The Environmental Assessment should assess the traffic implications of the project, with reference to the capacity, safety and design of key haulage routes to and from the project site. This must extend to an assessment of rail transport movements, including the number and frequency of train movements and potential conflicts with current rail traffic. Clear details of any road and rail infrastructure upgrades, particularly at the entrance to the site and at any road/rail interfaces, must be provided in the Environmental Assessment. Assessment of road and rail traffic impacts should include consideration of cumulative traffic impacts and the effect of likely and target modal splits (including maximization of rail haulage), and must be undertaken in accordance with the Roads and Maritime Services (formerly RTA) *Guide to Traffic Generating Developments*.

TfNSW also advise that Roads & Maritime has commenced planning for an upgrade of the Newell Highway (HW17) that includes a bypass of Parkes. A brochure outlining the project and a proposed route of the bypass is attached. The proposed bypass would likely include changes to the existing intersection of Brolgan and Westlime Roads (MR61) and ultimately, road transportation routes to the subject site. In this regard, Roads & Maritime would welcome the opportunity to meet with the applicant and discuss both the freight transport facility and Parkes bypass projects.

If you have any further questions, Mr Lee Farrell, Transport Planner, Land Use Planning and Development, would be pleased to take your call on (02) 8202 2944. I hope this has been of assistance.

Yours sincerely

A handwritten signature in blue ink, appearing to read 'M. Ozinga', with a stylized flourish at the end.

16/10/17

Mark Ozinga
Principal Manager, Land Use Planning and Development
Freight, Strategy and Planning

CD17/11060

Have your say - online or in person

This feedback process plays a vital role in the project's development and provides an opportunity for you to have your say. At the close of this consultation period all feedback will be responded to in a submissions report.

Drop in sessions

Come by anytime to view the project information and speak with the project team at any of the following locations:

Metro Plaza (near Woolworths)

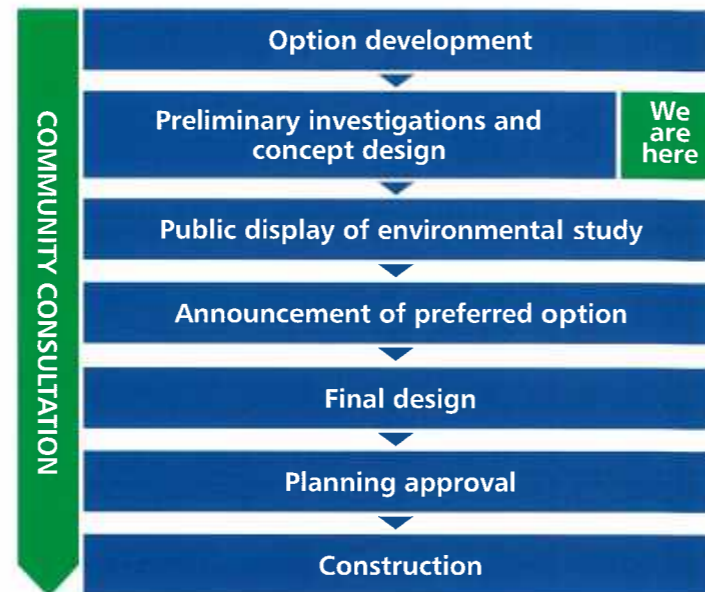
Tuesday 13 December 2016, 9am - 1pm
Thursday 15 December 2016, 3.30 - 6pm
Saturday 17 December 2016, 10am - 1pm
Tuesday 31 January 2017, 9am - 1pm
Thursday 2 February 2017, 3.30 - 6pm.

Clarinda Street (in front of Discount Daves)

Friday 16 December 2016, 12 - 3pm
Friday 13 January 2017, 12 - 3pm
Tuesday 31 January 2017, 3 - 5pm
Thursday 2 February 2017, 9am - 1pm

What happens next?

Using feedback from the community and results of traffic, environmental, heritage and socio-economic studies, the design will be further progressed. We will continue to keep the community updated as the project progresses.



A truck negotiating the Mitchell and Bogan street intersection

Find out more and give your feedback

A survey has been designed to help you provide your feedback. This is available online along with other important project information. We encourage you to ask questions and provide your feedback. You can do this by contacting us at:

- rms.work/parkesupgrade
- newell.upgrade@rms.nsw.gov.au
- 1800 741 636 (option 4)
- 55 Currajong Street, Parkes NSW 2870

All feedback must be received by 5pm Friday 10 February 2017.



Newell Highway at the Welcome railway crossing

Newell Highway upgrade at Parkes

Have your say

The New South Wales Government is providing \$6 million for planning for the potential Newell Highway upgrade at Parkes. This work is part of the \$500 million Newell Highway upgrade program.

Roads and Maritime Services has started planning for the potential upgrade of the Newell Highway at Parkes by reviewing options for new and existing routes. The planning has built on a previous Parkes Shire Council proposal for a Western ring road.

Preliminary traffic and environmental investigations have been completed, which will be used to further develop the project.

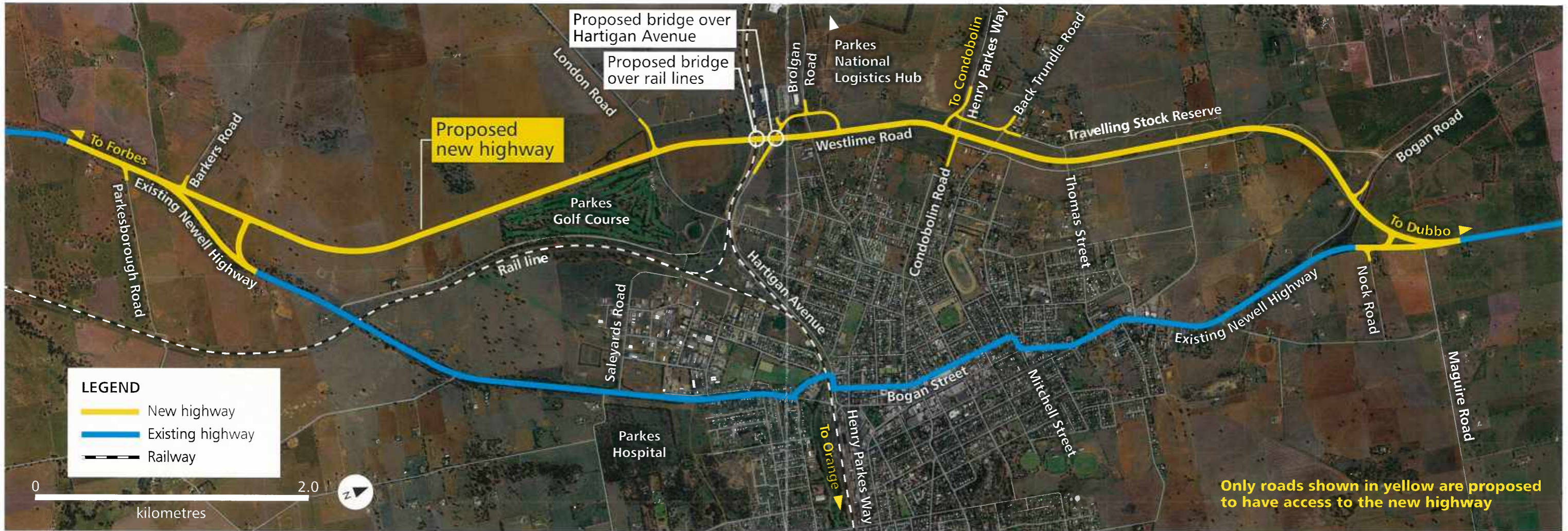
Roads and Maritime has investigated a number of options and is seeking community feedback on the option to build a new road west of Parkes.

Project objectives

Upgrade of the Newell Highway at Parkes aims to improve:

- Freight efficiency and productivity
- Access for high productivity vehicles (double road trains, B-triples, AB triples) through Parkes as well as providing a link to existing road train routes to the west
- Safety of the railway level crossings
- Travel times at Forbes Road level crossing (near Hartigan Avenue) and the Welcome level crossing
- Pedestrian access in Parkes particularly across Bogan Street
- Access to Parkes National Logistics Hub
- The attractiveness of Parkes as a place to live and work
- East-west traffic flow in Parkes, particularly Henry Parkes Way to Orange and Condobolin.

Concept display – Newell Highway upgrade at Parkes



Timing for the construction of the potential Newell Highway upgrade at Parkes is not confirmed and dependent on planning approval and funding availability

Project features

The new highway west of Parkes would be about 10.5km long and would include:

- Leaving the existing highway north of Parkes near Maguire Road
- Building a new road in the travelling stock reserve to the west of Parkes
- Building a bridge over the Parkes-Broken Hill railway line over double stacked trains
- Building a new road west of the golf course from the railway line to Barkers Road
- Continuing the new road to reconnect with the Newell Highway south of Parkes near Barkers Road.

Project benefits

- Increased access for the road trains
- New bridge over railway lines to minimise delays and improve safety
- Improved amenity and pedestrian access in Parkes by reducing the number of heavy vehicles through the town centre
- Improved safety for road users
- Improved traffic flow in Parkes, particularly roads to Orange and Condobolin

- Improved access to the Parkes National Logistics Hub
- Travel time savings
- Higher standard intersections and access into Parkes.

Other options

A number of other options have been investigated as part of planning for this project. These include:

- **Upgrading the existing route** – This option would not meet all project objectives, particularly pedestrian safety, reducing rail delays and providing efficient heavy vehicle access through Parkes. It would also have major impacts on property, accesses and the heritage rail station.
- **Western ring road** – This option is similar to the current concept however follows Hideaway Lane and is not as efficient as the proposed concept.
- **A new road further west of Parkes** – This option would have been much longer in length, more expensive to build and have a greater impact on private property.
- **A new road to the east of Parkes** – This option would be near existing and future residential areas, increase the project length, not improve access to the Parkes National Logistics Hub and have a greater impact on private property.



Truck turning over the level crossing from Hartigan Avenue



Truck turning right from Clarinda Street into Mitchell Street along the Newell Highway

Heavy vehicles that could use the upgraded road



A 36.5 metre B-triple vehicle



A 36.5 metre double road train



A 26 metre B-double vehicle