

18 November 2021

P0987E P+S Maryvale Solar Farm Traffic Addendum

Energy Forms
P O Box 16164
Collins Street West
VIC 8007

Attn: Remi Rauline

Dear Remi,

**Solar farm development, Maryvale NSW
Traffic impacts associated with the installation of the BESS on site**

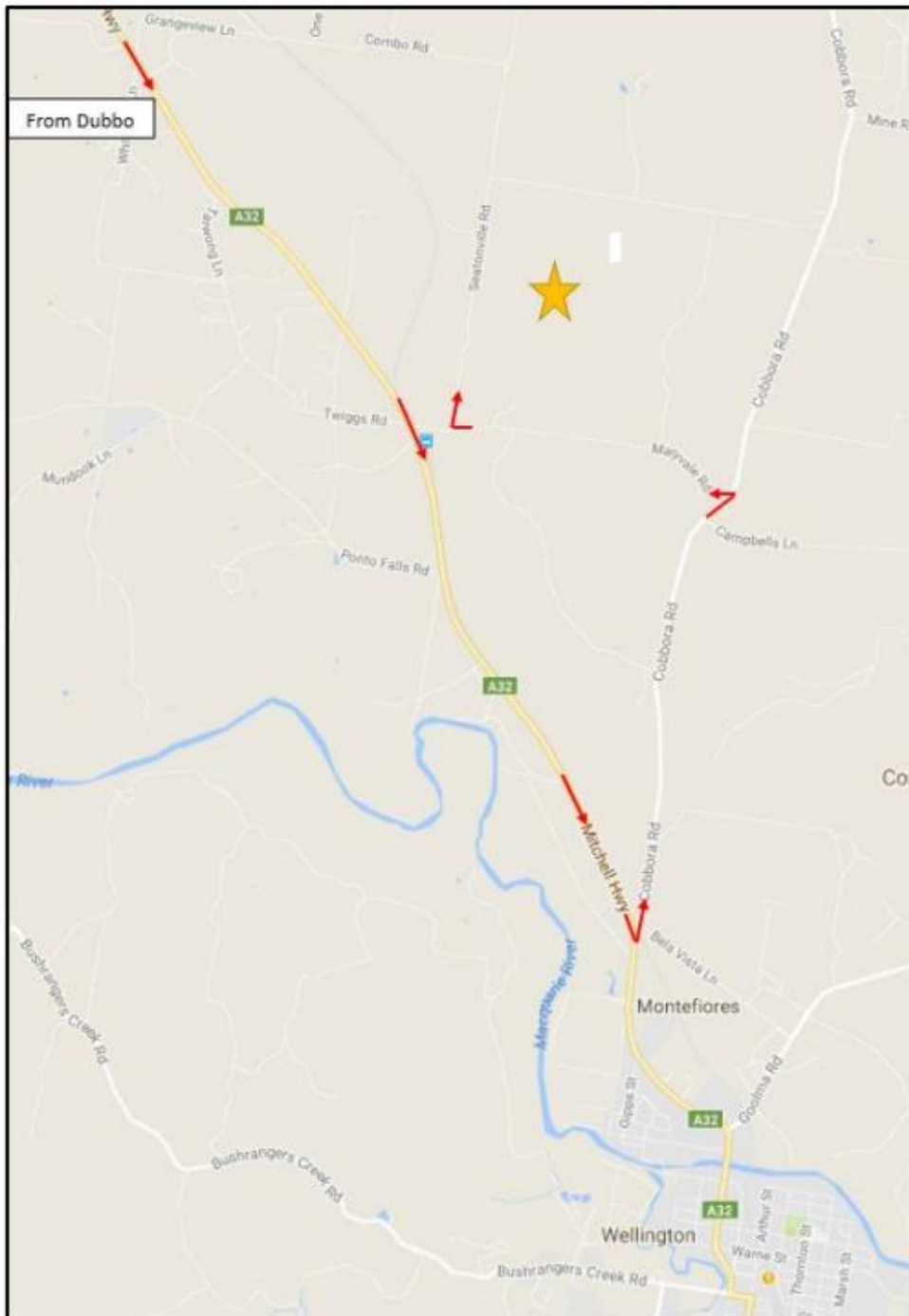
Further to your email, we have now reviewed the details provide with regards to the BESS (Battery Energy Storage System) installation for the approved solar farm at Maryvale, near Wellington NSW and provide the following summary and advice.

The proposed BESS installation will require the following:

- 90 x B-double trucks for the 180 x forty foot containers to be delivered to the site. These could come from the port at Newcastle or Sydney
- 30 x Deliveries of aggregate via truck and dog combination
- 2 x Low loaders for ancillary equipment
- 10 x Semi Trailers for ancillary equipment
- Staff vehicles – staff levels of less than 20 on site

The approved (nominated) heavy vehicle access route for the construction activities associated with the solar farm are provided below and will be used for the installation of the BESS equipment. Consistent with the original construction there may be the need for local product to also be sourced.

- Newcastle or Sydney metropolitan regional road network;
- M1 Motorway to Hunter Expressway (Sydney source);
- Hunter Expressway / New England Highway
- New England Highway to turn off for the Golden Highway;
- Golden Highway to Dubbo;
- Mitchell Highway from Dubbo towards Wellington
- Travel along Cobbora Road and Maryvale Road to access the site off Seatonville Road.



The majority of the route, other than Cobbora Road and Maryvale Road, all form part of the road freight routes within the State road network and all currently carry heavy vehicle movements including B-double access for the full length of the routes. These routes will be documented as the Haulage Route for delivery vehicles to enter and exit the site for the vehicles associated with haulage of the BESS equipment and all deliveries for the installation works for the project.

These roads carry a high number of heavy vehicles, including B-doubles associated with local and regional agricultural demands. The additional truck movement associated with the BESS deliveries and installation will have a minor and acceptable impact along these transport routes.

The traffic flows along the local roads giving access for the heavy and light vehicle movements associated with the installation of the BESS are very low based on observations on-site. The construction work associated with the solar farm generated 75 light vehicle movements (per direction) associated with the staff movements and 20 daily truck movements (per direction) and had a minor and acceptable impact upon the operation of these local roads during construction. For the installation of the BESS, light vehicles would be up to 20 light vehicle movements per direction and heavy vehicle movements would be less than 10 per day, over the installation duration of 4 weeks.

The traffic numbers associated with the BESS works will be low and will be managed to ensure that the daily truck movements do not exceed 20 heavy vehicles per day as per Condition 2 of Schedule 3 of the consent. The overall peak traffic numbers and daily numbers will remain consist with this approval.

The installation does not require any changes to the requirements within Schedule 3 Conditions 2-8. The BESS installation will not require any additional road upgrades as the vehicles used for the transportation of the units will be similar to the vehicles to be used as part of the approved construction.

Overall, it is concluded that the installation of the BESS equipment shall have a minor impact upon the overall road network, with a lower demand per day than the demands associated with the construction work for the approved solar farm. These works shall occur over a short timeframe and once installed, there will be no change to the traffic movements associated with the operational stage of the solar farm.

Yours sincerely,



Sean Morgan
Director