
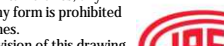


Step 1: Install Standard JASO Towers

|   |        |                           |  |           |     |              |        |     |                                 |                      |      |          |   |           |            |          |  |
|---|--------|---------------------------|--|-----------|-----|--------------|--------|-----|---------------------------------|----------------------|------|----------|---|-----------|------------|----------|--|
|  <div>TITAN Cranes &amp; Rigging<br/>7 Curtis Rd, Mulgrave<br/>NSW 2765<br/>+61 1300 30 40 52</div> | Client | Project                   | CRANE  | MODEL     | JIB | MAX CAPACITY | TOWERS | HUH | Rev                             | Description          | Drn. | Date     | Dwg No.   | Sheet No. | Scale      | Drawn By |  |
|   |        | J360 Installation Drawing | TC1  | Jaso J360 | x   | x            | x      | x   | P1                              | Information          | AK   | 09.06.17 | J360-01-01  | T100      | 1:150 @ A3 | AK       |  |
|   |        | Drawing<br><br>Step 1     | ALL WEIGHTS ARE OBTAINED FROM<br>MF.1.02.070.00.050.B<br>"Manufacturers Handbook_0062_Pg142"<br>UNLESS OTHERWISE SPECIFIED |           |     |              |        |     | C1                              | Revised Weights      | DS   | 20.08.18 | <div>These drawings remain the property of Titan Cranes, any modification/reproduction of them in any form is prohibited without written consent from Titan Cranes. Please make sure you have the latest revision of this drawing. it is not Titan Cranes responsibility. Do not scale off this drawing - If you need dimensions please contact Titan Cranes.</div>  |           |            |          |  |
|   |        |                           |  |           |     |              |        |     | C2                              | Harness points added | AK   | 19.11.18 |   |           |            |          |  |
|   |        |                           |  |           |     |              |        |     | Current Revision C2 Quote: J360 |                      |      |          |   |           |            |          |  |

Chains Detailed by  
site specific using  
JASO lifting points

Bottom Slew = 3.5t

Harness Required - Harness used as  
primary fall protection in fall  
restraint. Grillion attached to horizontal  
structural member of crane. Double  
lanyard as secondary fall protection

Harness Required - Harness used as  
primary fall protection in fall  
restraint. Grillion attached to horizontal  
structural member of crane. Double  
lanyard as secondary fall protection

Tower Head +  
Top slew = 7t


Chains Detailed by  
site specific using  
JASO lifting points

Cabin + Platforms  
= 1.085t\*

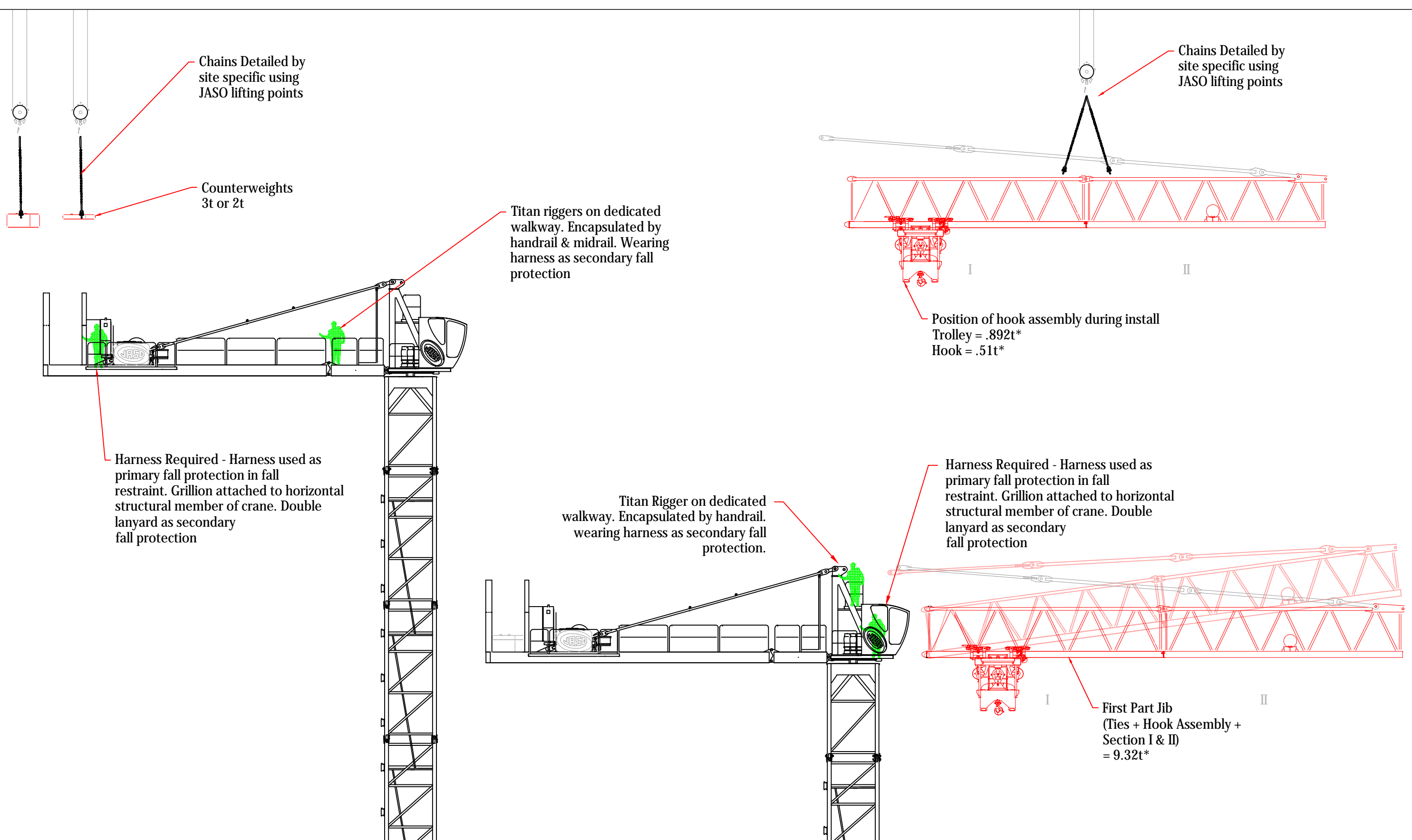
Step 2: Install Slewing Assembly

Step 3: Install Cabin + Platforms

\*WEIGHT WAS OBTAINED FROM THE PACKING LIST

|   |        |                           |  |           |     |                 |        |     |                |                         |             |   |            |           |       |          |  |
|---|--------|---------------------------|--|-----------|-----|-----------------|--------|-----|----------------|-------------------------|-------------|---|------------|-----------|-------|----------|--|
|  <div>TITAN Cranes &amp; Rigging</div> <div>7 Curtis Rd, Mulgrave<br/>NSW 2765</div> <div>+61 1300 30 40 52</div> | Client | Project                   | CRANE  | MODEL     | JIB | MAX<br>CAPACITY | TOWERS | HUH | Rev            | Description             | Drn.        | Date  | Dwg No.    | Sheet No. | Scale | Drawn By |  |
|   |        | J360 Installation Drawing | TC1  | Jaso J360 | x   | x               | x      | x   | P1 Information | AK 09.06.17             | J360-01-01  | T101  | 1:150 @ A3 | AK        |       |          |  |
|   |        | Drawing                   | ALL WEIGHTS ARE OBTAINED FROM<br>MF.1.02.070.00.050.B<br>"Manufacturers Handbook_0062_Pg142"<br>UNLESS OTHERWISE SPECIFIED |           |     |                 |        |     |                | C1 Revised Weights      | DS 20.08.18 | <div>These drawings remain the property of Titan Cranes, any modification/reproduction of them in any form is prohibited without written consent from Titan Cranes.<br/>Please make sure you have the latest revision of this drawing.<br/>it is not Titan Cranes responsibility.<br/>Do not scale off this drawing - If you need dimensions please contact Titan Cranes.</div> <div>Current Revision <b>C2</b>Quote: <b>J360</b></div> |            |           |       |          |  |
|   |        |                           |  |           |     |                 |        |     |                | C2 Harness points added | AK 19.11.18 |   |            |           |       |          |  |
|   |        |                           |  |           |     |                 |        |     |                |                         |             |   |            |           |       |          |  |




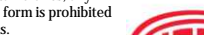


Step 5: Place Required Counterweights for Jib Install

Step 6: Install

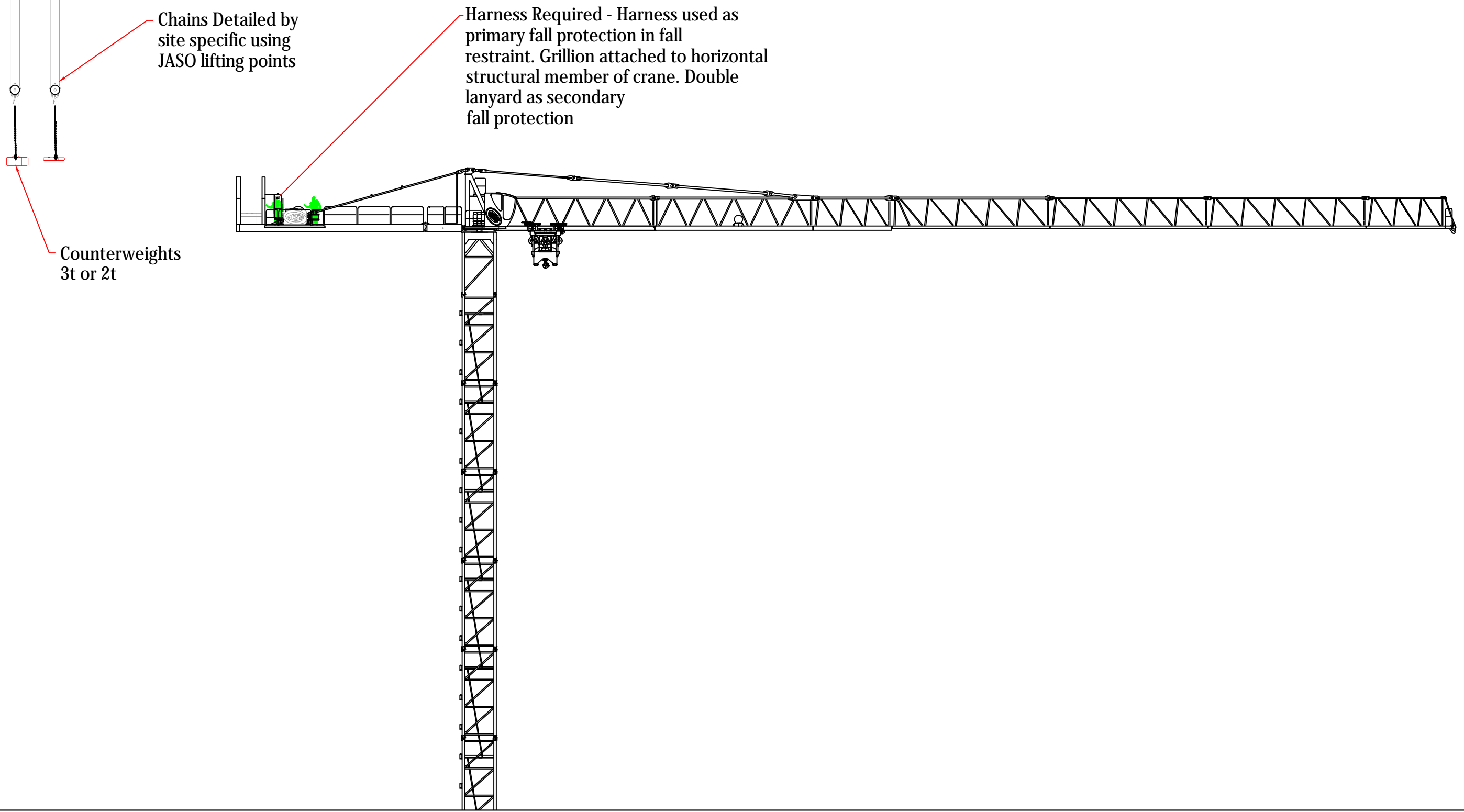
\*WEIGHT WAS OBTAINED FROM THE PACKING LIST

|   |        |                           |  |           |          |                 |        |     |                |             |          |                    |         |            |   |          |  |  |
|---|--------|---------------------------|--|-----------|----------|-----------------|--------|-----|----------------|-------------|----------|--------------------|---------|------------|---|----------|--|--|
| <div><div>TITAN<br/>GROUP OF COMPANIES</div></div> <div>TITAN Cranes &amp; Rigging</div> <div>7 Curtis Rd, Mulgrave<br/>NSW 2765</div> <div>+61 1300 30 40 52</div> | Client | Project                   | CRANE  | MODEL     | JIB      | MAX<br>CAPACITY | TOWERS | HUH | Rev            | Description | Drn.     | Date               | Dwg No. | Sheet No.  | Scale   | Drawn By |  |  |
|   |        | J360 Installation Drawing | TC1  | Jaso J360 | x        | x               | x      | x   | P1 Information | AK          | 09.06.17 | J360-01-01         | T103    | 1:150 @ A3 | AK  |          |  |  |
|   |        | Drawing<br><br>Step 2 & 3 | ALL WEIGHTS ARE OBTAINED FROM<br>MF.1.02.070.00.050.B<br>"Manufacturers Handbook_0062_Pg142"<br>UNLESS OTHERWISE SPECIFIED |           |          |                 |        |     |                |             |          | C1 Revised Weights | DS      | 20.08.18   | <div>These drawings remain the property of Titan Cranes, any modification/reproduction of them in any form is prohibited without written consent from Titan Cranes. Please make sure you have the latest revision of this drawing. it is not Titan Cranes responsibility. Do not scale off this drawing - If you need dimensions please contact Titan Cranes.</div> <div>Current Revision <b>C2</b></div> <div>Quote: <b>J360</b></div> |          |  |  |
|   |        |                           | C2 Harness points added  | AK        | 19.11.18 |                 |        |     |                |             |          |                    |         |            |   |          |  |  |




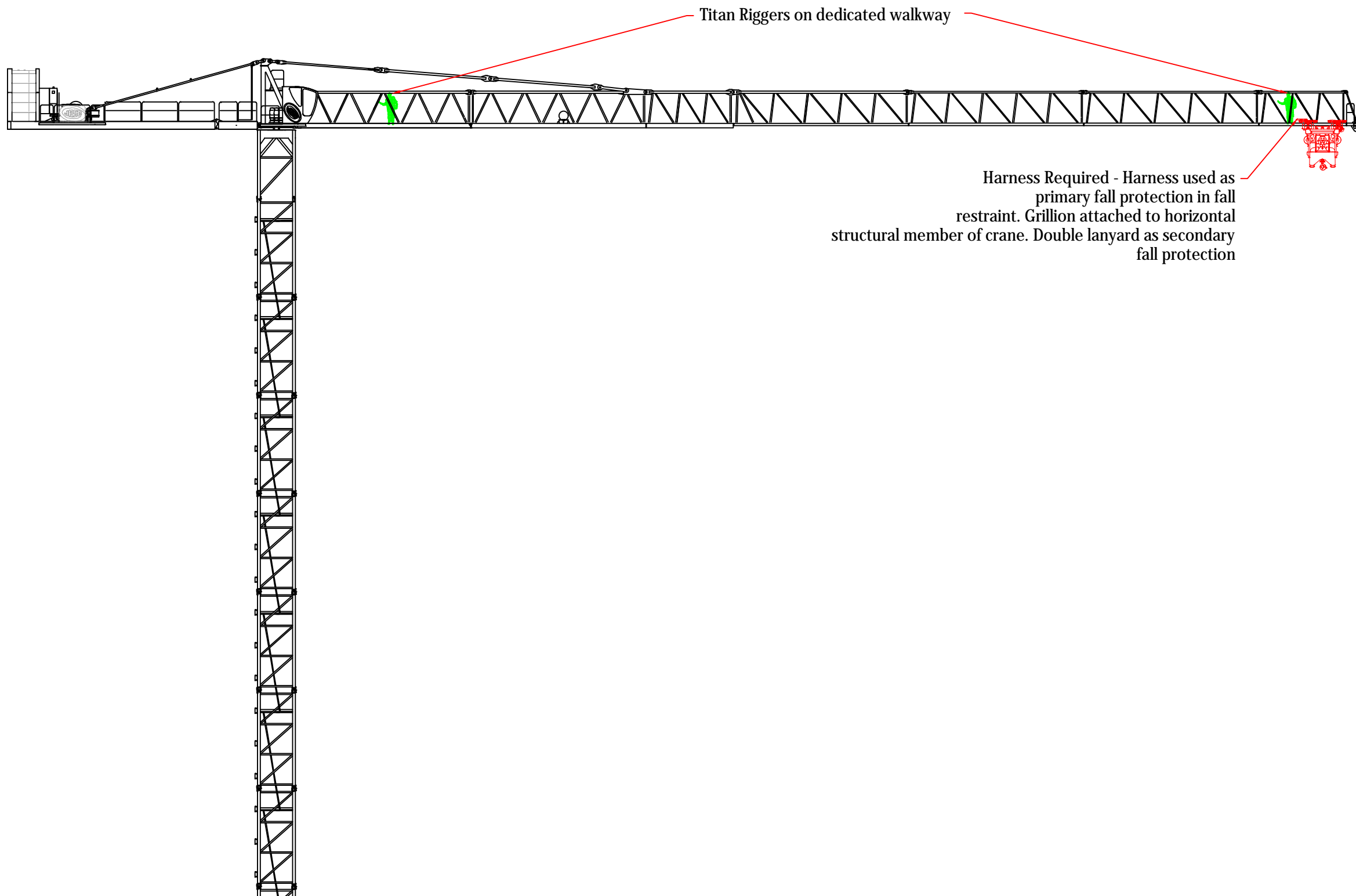






Step 8: Install the final counterweights

|   |        |                           |  |           |     |                 |        |     |     |                      |      |          |  |           |            |          |
|---|--------|---------------------------|--|-----------|-----|-----------------|--------|-----|-----|----------------------|------|----------|--|-----------|------------|----------|
| <div><div>TITAN<br/>GROUP OF COMPANIES</div></div> <div>TITAN Cranes &amp; Rigging<br/>7 Curtis Rd, Mulgrave<br/>NSW 2765<br/>+61 1300 30 40 52</div> | Client | Project                   | CRANE  | MODEL     | JIB | MAX<br>CAPACITY | TOWERS | HUH | Rev | Description          | Drn. | Date     | Dwg No.  | Sheet No. | Scale      | Drawn By |
|   |        | J360 Installation Drawing | TC1  | Jaso J360 | x   | x               | x      | x   | P1  | Information          | AK   | 09.06.17 | J360-01-01   | T105      | 1:250 @ A3 | AK       |
|   |        | Drawing<br>Step 8         | ALL WEIGHTS ARE OBTAINED FROM<br>MF.1.02.070.00.050.B<br>"Manufacturers Handbook_0062_Pg142"<br>UNLESS OTHERWISE SPECIFIED |           |     |                 |        |     | C1  | Revised Weights      | DS   | 20.08.18 | <div>These drawings remain the property of Titan Cranes, any modification/reproduction of them in any form is prohibited without written consent from Titan Cranes. Please make sure you have the latest revision of this drawing. it is not Titan Cranes responsibility. Do not scale off this drawing - If you need dimensions please contact Titan Cranes.</div> <div>Current RevisionC2Quote: J360</div> |           |            |          |
|   |        |                           |  |           |     |                 |        |     | C2  | Harness points added | AK   | 19.11.18 |  |           |            |          |



Step 9: Reeve the hook