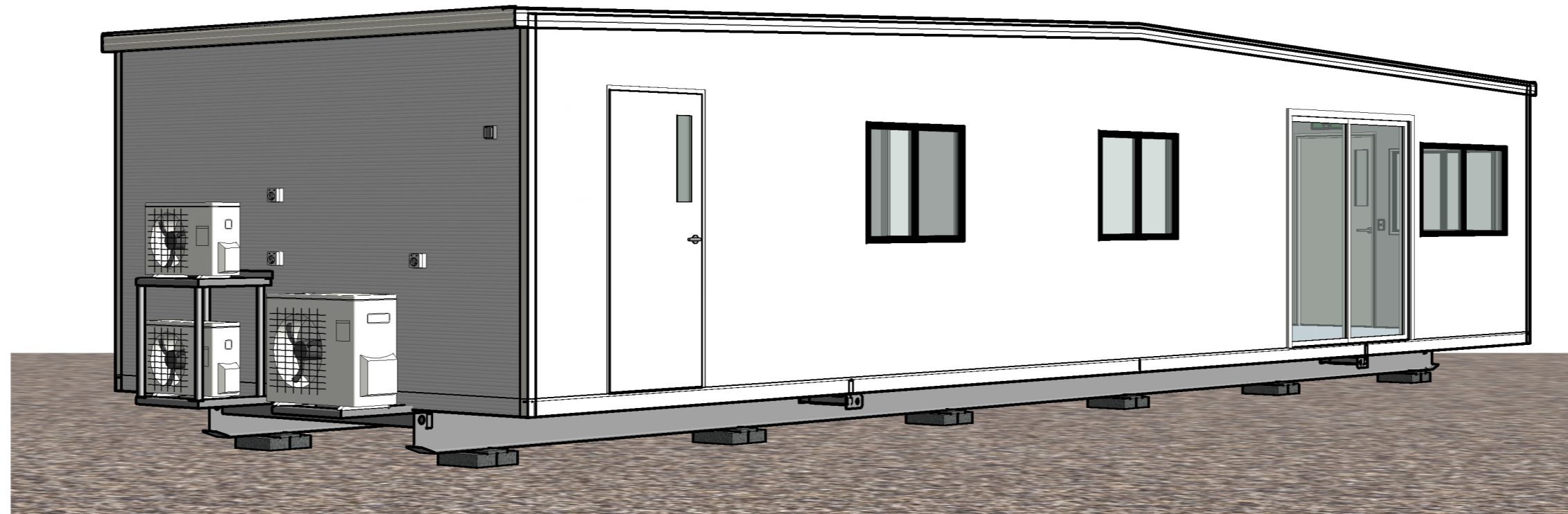


APPENDIX D

Building Plan



View indicative only

DRAWING LIST		
SHEET NUMBER	SHEET NAME	CURRENT REVISION
A000	TITLE PAGE	A
A200	PLAN	A
A300	ELEVATIONS	A
A350	SECTIONS	A
A500	SALES SCHEDULES	A

181106
CONCRUSH PTY LTD
 21 RACECOURSE ROAD, TERALBA
 NSW 2284

14.4 x 4.4m WEIGHBRIDGE OFFICE/AMENITIES

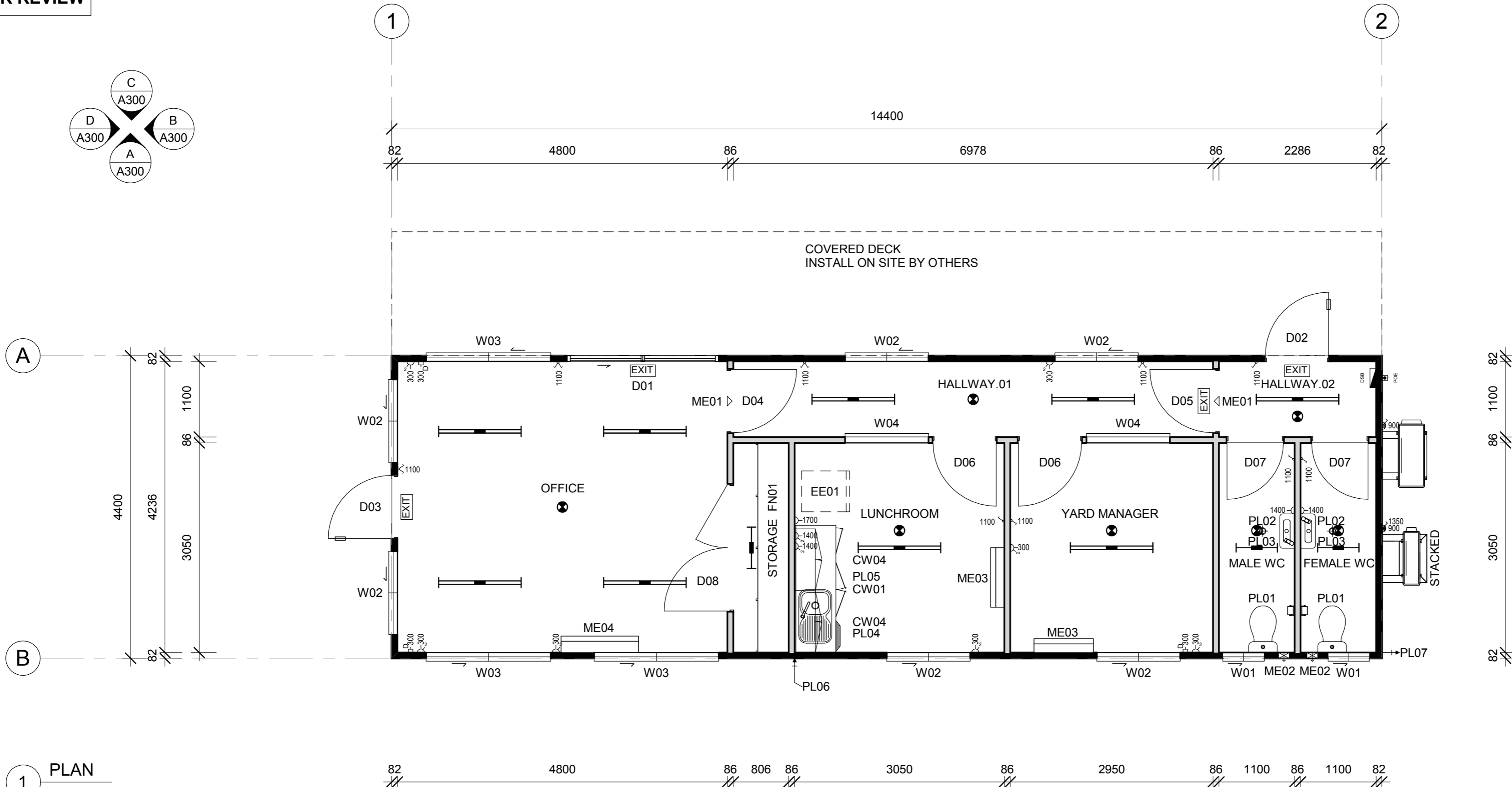
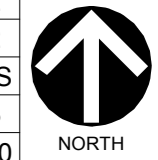
ATCO

ATCO STRUCTURES & LOGISTICS PTY. LTD. PHONE: (07) 3412 8600
 55 TONKA STREET, LISCOMBE, QLD 4207 FAX: (07) 3412 8699
 P.O. BOX 393, BEENLEIGH, QLD 4207 ABN: 71 083 902 309
 E-mail: ASLAu.Sales@atco.com

ISSUED FOR REVIEW

WIND REGION:	B
TERRAIN CATEGORY:	2
IMPORTANCE LEVEL:	2
SHIELDING FACTOR:	NS
BUILDING CLASS:	5
FLOOR LOADS DISTRIBUTED (kPa):	3.0
FLOOR LOADS CONCENTRATED (kN):	2.7
CLIMATE ZONE:	5

FLOOR LOADS CALCULATED FROM AS1170.1 - 2002.
WIND SPEED CALCULATED FROM AS1170.2 - 2011.
BUILDING CLASS, IMPORTANCE LEVEL, PROBABILITY OF EXCEEDANCE, WIND REGION, TERRAIN CATEGORY, TOPOGRAPHIC CLASSIFICATION, SHIELDING FACTOR, CLIMATE ZONE & NORTH POINT ARE ASSUMED UNLESS OTHERWISE ADVISED BY CLIENT.



ROOM SCHEDULE	
NAME	AREA
FEMALE WC	3.36 m ²
HALLWAY.01	7.68 m ²
HALLWAY.02	2.51 m ²
LUNCHROOM	9.3 m ²
MALE WC	3.36 m ²
OFFICE	20.33 m ²
STORAGE	2.46 m ²
YARD MANAGER	9 m ²

1 PLAN
1 : 50

FINISHES SCHEDULE	
FLOOR COVERING	2mm VINYL
FLOOR COVERING	2mm VINYL - WC AREAS ONLY - 150mm COVERED
CLADDING - EXTERNAL	COLORBOND MAXIRIB - HORIZONTAL
WALL LINING - INTERNAL	3.6mm POLYESTER COATED PLYWOOD
CEILING LINING - INTERNAL	3.6mm COATED PLYWOOD
ROOF SHEETING	0.42mm BMT SUPERDEK ROOFING

DDA COMPLIANCE NOTES

- BUILDING DESIGNED TO COMPLY WITH AS1428.1
- LUNCHROOM, YARD MANAGER & HALLWAYS DEEMED EXEMPT UNDER NCC2013 D3.4 AS DIRECTED BY CLIENT. SHOULD THIS NEED COMPLIANCE, HALLWAY WIDTH NEED TO BE INCREASED

ITEM	QTY	DESCRIPTION
Casework		
CW01	1	BENCHTOP (32mm) c/w SPLASHBACK (150H), LAMINATED / CARCASS (16mm) END PANELS, CUPBOARDS & 4 DRAWERS/CUTLERY INSERT UNDER, MELAMINE - 600D - 1848L - 900H
CW04	2	CUPBOARD, MELAMINE OVERHEAD, 2 DOOR - 300D - 900W - 600H
Electrical Equipment		
EE01	1	REFRIGERATOR, SINGLE DOOR - 350 Ltr (BY CLIENT)
Furniture		
FN01	1	SHELVING, 3 TIER - 450 DEEP - 3050 LONG - 1800 HIGH
Plumbing Fixtures		
PL01	2	WC SUITE c/w TOILET ROLL HOLDER
PL02	2	HAND BASIN, COMPACT, STAINLESS STEEL (HOT & COLD FLICKMIXER) w/ MIRROR
PL03	2	FLOOR WASTE
PL04	1	SINK c/w FLICKMIXER (HOT & COLD), 1 BOWL, 1 DRAIN - 780mm LONG
PL05	1	HOT WATER SYSTEM, MOUNTED INTERNALLY ON SAFE TRAY - 50Ltr, 1x3.6kW
PL06	1	WATER INLET
PL07	1	WASTE MANIFOLD OUTLET

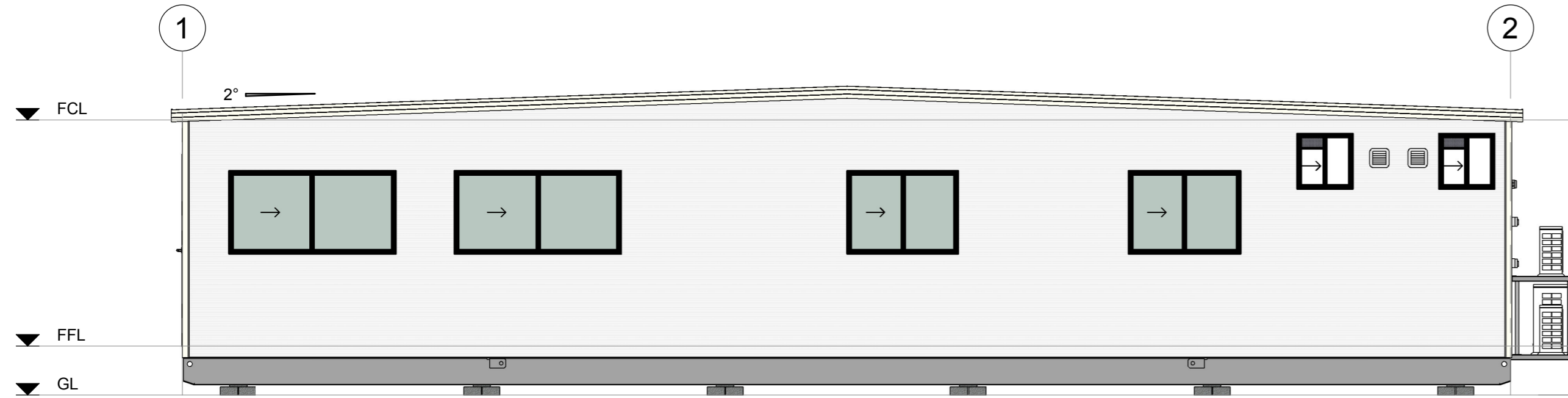
SYMBOL LEGEND	
	ELECTRICAL SWITCHBOARD
	ELECTRICAL POINT OF ENTRY
	LIGHT SWITCH, SINGLE
	LIGHT SWITCH, TWO WAY
	ISOLATION SWITCH
	GPO, SINGLE POLE - 1x10A
	GPO, SINGLE POLE - 2x10A
	DRAW WIRE - 'D' DENOTES DATA
	LIGHT - 1x14W T5 FLUORESCENT & DIFFUSER
	LIGHT - 2x28W T5 FLUORESCENT & DIFFUSER
	LIGHT, EMERGENCY (SPITFIRE). C0 = D40, C90 = D40
	LIGHT, EXIT. C0 = E2.0, C90 = E2.0, 24m VIEW DISTANCE
	PLUMBING WATER INLET POINT
	PLUMBING WASTE MANIFOLD OUTLET POINT

CONFIRM DETAILS OF SET OUTS, LEVELS AND CRITICAL DIMENSIONS ON SITE PRIOR TO SHOP DRAWINGS AND FABRICATION. QUALITY CERTIFIED TO AS/NZS ISO 9001:2008 BY SCI-QUAL INTERNATIONAL REGN No. 531. DO NOT SCALE FROM THIS DRAWING. USE FIGURED DIMENSIONS. OVERALL DIMENSIONS EXCLUDE EXTERNAL CLADDINGS U.N.O. ALL CONSTRUCTION TO COMPLY WITH NATIONAL CONSTRUCTION CODE OF AUSTRALIA AND APPLICABLE AUSTRALIAN STANDARDS. THIS DRAWING REMAINS THE PROPERTY OF ATCO STRUCTURES & LOGISTICS PTY. LTD. (ATCO). IT MAY NOT BE REPRODUCED OR COPIED WHOLE OR IN PART WITHOUT WRITTEN AUTHORITY.

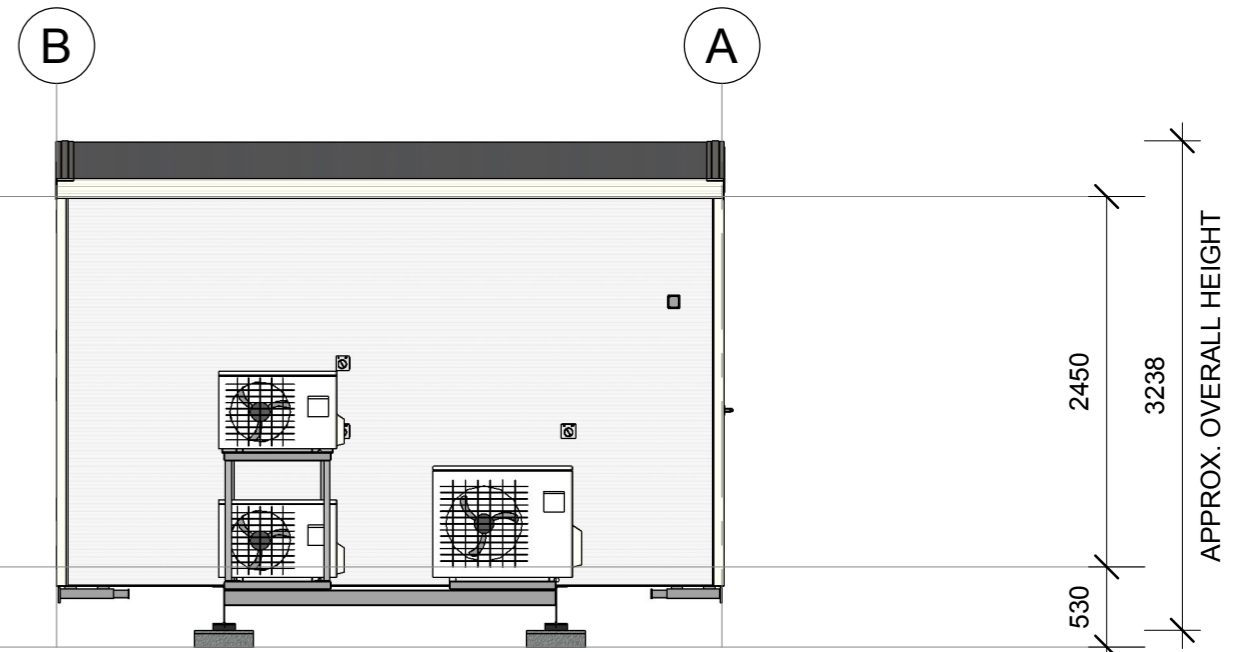
REV	DESCRIPTION	DATE	BY	CHKD
A	ISSUED FOR REVIEW (CONCEPT DWG ONLY)	09.11.18	VT	

ATCO
ATCO STRUCTURES & LOGISTICS PTY. LTD. PHONE: (07) 3412 8600
55 TONKA STREET, LUSCOMBE, QLD 4207 FAX: (07) 3412 8699
P.O. BOX 393, BEENLEIGH, QLD 4207 ABN: 71 083 902 309
E-mail: ASL@atco.com

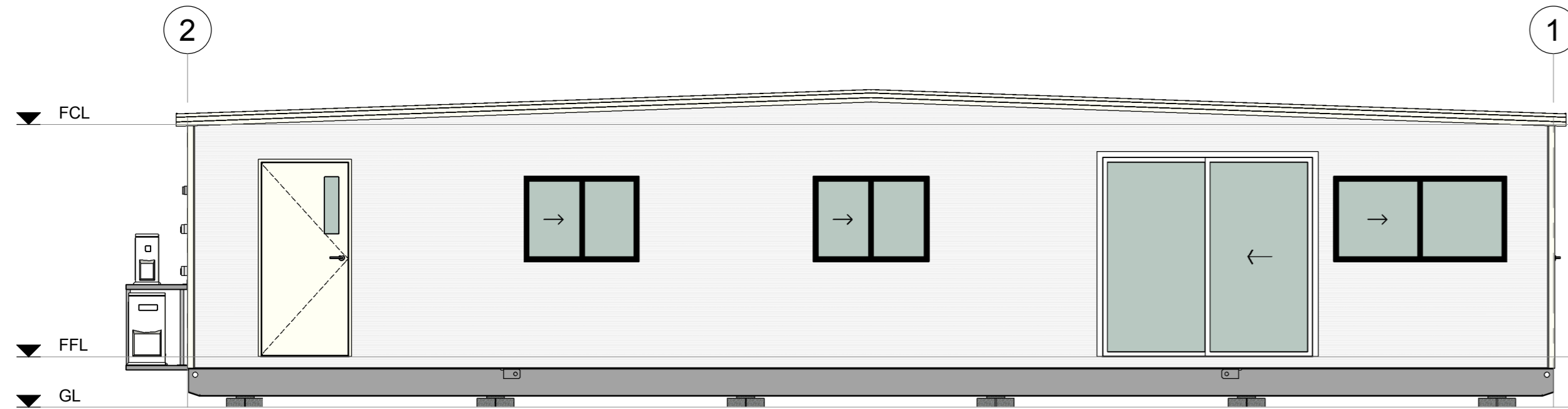
CLIENT CONCRUSH PTY LTD	TITLE PLAN
DESCRIPTION 14.4 x 4.4m WEIGHBRIDGE OFFICE/AMENITIES	PROJECT No.
ADDRESS 21 RACECOURSE ROAD, TERALBA NSW 2284	SCALE AT A2 1 : 50
DRAWING NUMBER 181106 -A200	REVISION A



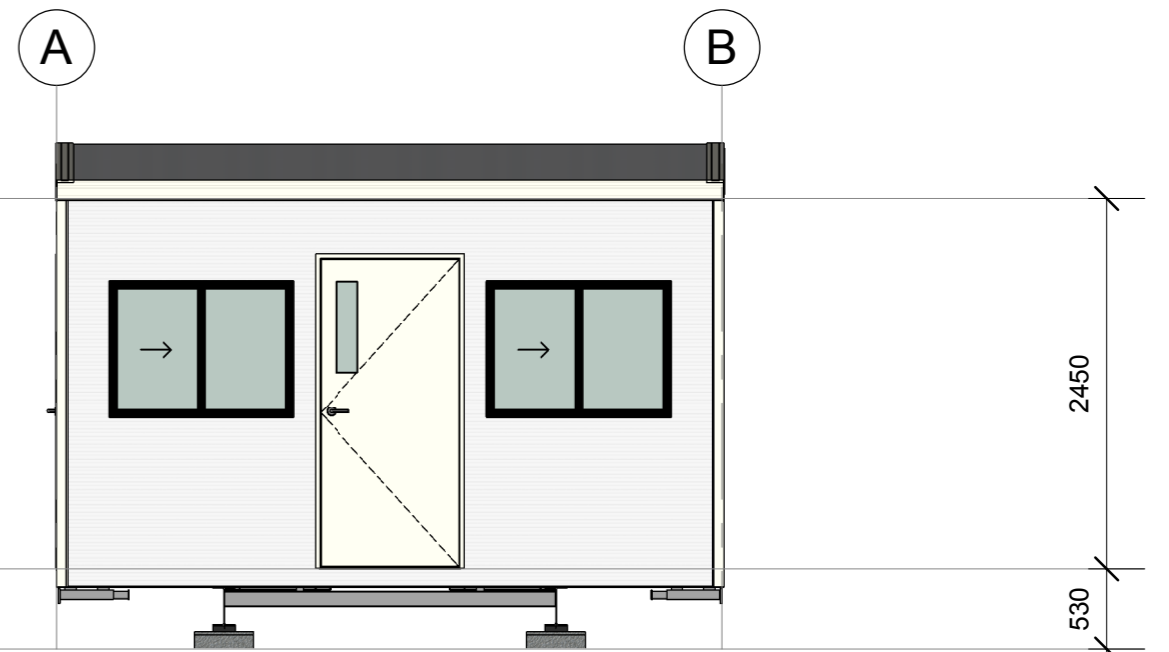
A ELEVATION
A200 1:50



B ELEVATION
A200 1:50



C ELEVATION
A200 1:50



D ELEVATION
A200 1:50

CONFIRM DETAILS OF SET OUTS, LEVELS AND CRITICAL DIMENSIONS ON SITE PRIOR TO SHOP DRAWINGS AND FABRICATION. QUALITY CERTIFIED TO AS/NZS ISO 9001:2008 BY SCI-QUAL INTERNATIONAL REGN No. 531
DO NOT SCALE FROM THIS DRAWING. USE FIGURED DIMENSIONS. OVERALL DIMENSIONS EXCLUDE EXTERNAL CLADDINGS U.N.O.
ALL CONSTRUCTION TO COMPLY WITH NATIONAL CONSTRUCTION CODE OF AUSTRALIA AND APPLICABLE AUSTRALIAN STANDARDS
THIS DRAWING REMAINS THE PROPERTY OF ATCO STRUCTURES & LOGISTICS PTY. LTD. (ATCO). IT MAY NOT BE REPRODUCED OR COPIED WHOLE OR IN PART WITHOUT WRITTEN AUTHORITY

REV	DESCRIPTION	DATE	BY	CHKD
A	ISSUED FOR REVIEW (CONCEPT DWG ONLY)	09.11.18	VT	

ATCO
ATCO STRUCTURES & LOGISTICS PTY. LTD. PHONE: (07) 3412 8600
55 TONKA STREET, LUSCOMBE, QLD 4207 FAX: (07) 3412 8699
P.O. BOX 393, BEENLEIGH, QLD 4207 ABN: 71 083 902 309
E-mail: ASL@atco.com

CLIENT
CONCRUSH PTY LTD
DESCRIPTION
14.4 x 4.4m WEIGHBRIDGE OFFICE/AMENITIES
ADDRESS
21 RACECOURSE ROAD, TERALBA
NSW 2284

TITLE ELEVATIONS	
PROJECT No.	SCALE AT A2 1:50
DRAWING NUMBER 181106-A300	REVISION A

ISSUED FOR REVIEW

BASEFRAME SCHEDULE	
DESCRIPTION	CENTRE TO CENTRE
310 UB SKID BEAMS	2200

FLOORING SCHEDULE	
ITEM	DESCRIPTION
FLOOR - 100mm JOISTS, 17mm PLY WITH VINYL (COVERED) E/E	
FLOOR FRAMING	100mm STEEL JOIST (REFER STRUCTURAL SPECIFICATION)
INSULATION - UNDER FLOOR	R2.1 HEAVY DUTY FOIL FACED BATTS
FLOORING	17mm F11 T&G PLYWOOD
FLOOR COVERING	2mm VINYL - WC AREAS ONLY - 150mm COVERED
FLOOR - 100mm JOISTS, 17mm PLY WITH VINYL E/E	
FLOOR FRAMING	100mm STEEL JOIST (REFER STRUCTURAL SPECIFICATION)
INSULATION - UNDER FLOOR	R2.1 HEAVY DUTY FOIL FACED BATTS
FLOORING	17mm F11 T&G PLYWOOD
FLOOR COVERING	2mm VINYL

WALL SCHEDULE	
ITEM	DESCRIPTION
WALL - EXT PLY / MRIB - E/E	
CLADDING - EXTERNAL	COLORBOND MAXIRIB - HORIZONTAL
WALL LINING - INTERNAL	3.6mm POLYESTER COATED PLYWOOD
THERMAL BREAK BETWEEN FRAMING & CLADDING	
FRAMING	78mm STEEL STUD (REFER STRUCTURAL SPECIFICATION)
INSULATION	R2.7 HP BATTS
SKIRTING	2mm VINYL - WC AREAS ONLY - 150mm COVERED
WALL - INT PLY / PLY	
WALL LINING - INTERNAL	3.6mm POLYESTER COATED PLYWOOD
FRAMING	78mm STEEL STUD (REFER STRUCTURAL SPECIFICATION)
SKIRTING	2mm VINYL - WC AREAS ONLY - 150mm COVERED

FINISHES SCHEDULE		
ITEM	DESCRIPTION	COLOUR/TREATMENT
FLOOR COVERING	2mm VINYL	LIGHT GREY
FLOOR COVERING	2mm VINYL - WC AREAS ONLY - 150mm COVERED	LIGHT GREY
CLADDING - EXTERNAL	COLORBOND MAXIRIB - HORIZONTAL	SURFMIST
WALL LINING - INTERNAL	3.6mm POLYESTER COATED PLYWOOD	GREY
SKIRTING	2mm VINYL - WC AREAS ONLY - 150mm COVERED	LIGHT GREY
SKIRTING	PVC	GREY
WALL JOINT - PLY LINING	PVC	GREY
CORNICE	PVC	GREY
CEILING LINING - INTERNAL	3.6mm COATED PLYWOOD	SILVER CLOUD
ROOF SHEETING	0.42mm BMT SUPERDEK ROOFING	ZINCALUME
EXTERNAL DOOR	COLORBOND	SURFMIST
EXTERNAL DOOR EXT. JAMB	POWDERCOATED ALUMINIUM	ARCHITECTURAL WHITE
EXTERNAL DOOR EXT. JAMB	COLORBOND	SURFMIST
EXTERNAL DOOR INTERNAL JAMB	COLORBOND	SURFMIST
INTERNAL DOOR	PAINTED	GREY
INTERNAL DOOR JAMB	PAINTED -	GREY
WINDOW FRAME	POWDERCOATED	BLACK
WINDOW ARCHITRAVE	PVC	GREY
FASCIA	COLORBOND - T.B.A.	
GUTTER	HI-SQUARE, COLORBOND	T.B.A.
VERTICAL CORNER ANGLE	COLORBOND - T.B.A.	

CEILING & ROOF SCHEDULE		
ITEM	DESCRIPTION	
CEILING - 75mm w/ PLY LINING		
CEILING LINING - INTERNAL	3.6mm COATED PLYWOOD	
JOIST	75mm JOIST (REFER STRUCTURAL SPECIFICATION)	
ROOF - SUPERDEK (0.42mm)		
INSULATION	R2.3 FOIL BACKED FIBREGLASS INSULATION	
ROOF SHEETING	0.42mm BMT SUPERDEK ROOFING	

FITTINGS SCHEDULE		
ITEM	DESCRIPTION	QTY
Casework		
CW01	BENCHTOP (32mm) c/w SPLASHBACK (150H), LAMINATED / CARCASS (16mm) END PANELS, CUPBOARDS & 4 DRAWERS/CUTLERY INSERT UNDER, MELAMINE - 600D - 1848L - 900H	1
CW04	CUPBOARD, MELAMINE OVERHEAD, 2 DOOR - 300D - 900W - 600H	2
Electrical Equipment		
EE01	REFRIGERATOR, SINGLE DOOR - 350 Ltr (BY CLIENT)	1
Electrical Fixtures		
	DRAW WIRE, DATA	3
	ELECTRICAL - SWITCHBOARD & POINT OF ENTRY	1
	GPO, SINGLE POLE - 1x10A	3
	GPO, SINGLE POLE - 2x10A	9
	ISOLATION SWITCH FOR AIR CONDITIONER	3
Furniture		
FN01	SHELVING, 3 TIER - 450 DEEP - 3050 LONG - 1800 HIGH	1
Lighting Fixtures		
	LIGHT - 1x14W T5 FLUORO & DIFFUSER	3
	LIGHT - 2x28W T5 FLUORO & DIFFUSER	9
	LIGHT SWITCH, SINGLE	5
	LIGHT SWITCH, TWO WAY	4
	LIGHT, EMERGENCY (SPITFIRE) - CEILING MOUNTED. C0 = D40, C90 = D40	7
	LIGHT, EXIT - WALL MOUNTED. C0 = E2.0, C90 = E2.0, 24m VIEW DISTANCE	4
Plumbing Fixtures		
PL01	WC SUITE c/w TOILET ROLL HOLDER	2
PL02	HAND BASIN, COMPACT, STAINLESS STEEL (HOT & COLD FLICKMIXER) w/ MIRROR	2
PL03	FLOOR WASTE	2
PL04	SINK c/w FLICKMIXER (HOT & COLD), 1 BOWL, 1 DRAIN - 780mm LONG	1
PL05	HOT WATER SYSTEM, MOUNTED INTERNALLY ON SAFE TRAY - 50Ltr, 1x3.6kW	1
PL06	WATER INLET	1
PL07	WASTE MANIFOLD OUTLET	1

DOOR SCHEDULE													
No.	DOOR LEAF	GLASS	DOOR LEAF SIZE		DOOR FRAME	DOOR HARDWARE					QTY	COMMENTS	
			H	W		HANDLE TYPE	LOCKING	CLOSER	PANIC BAR	SEALS			
D01	COMMERCIAL GLASS	SLIDING GLASS DOOR	2100	2200	COLORBOND		ENTRANCE					1	LAMINATED GREY GLASS
D02	SOLID CORE MC	VIEWING PANEL	2040	920	COLORBOND	LEVER	ENTRANCE	Yes	No	E/E	1	1	LAMINATED CLEAR GLASS
D03	SOLID CORE MC	VIEWING PANEL	2040	920	COLORBOND	LEVER	ENTRANCE	Yes	No	E/E	1	1	LAMINATED CLEAR GLASS
D04	HOLLOW CORE	NONE	2040	920	COLORBOND	LEVER	PASSAGE	Yes	No		1		
D05	HOLLOW CORE	NONE	2040	920	COLORBOND	LEVER	ENTRANCE	Yes	No		1		
D06	HOLLOW CORE	NONE	2040	920	COLORBOND	LEVER	ENTRANCE	No	No		2		
D07	HOLLOW CORE	NONE	2040	820	COLORBOND	LEVER	PASSAGE w/ INDICATOR BOLT	Yes	No		2		
D08	HOLLOW CORE		2040	1840	COLORBOND	LEVER	PASSAGE	No	No		1		

DDA COMPLIANCE NOTES
- BUILDING DESIGNED TO COMPLY WITH AS1428.1
- LUNCHROOM, YARD MANAGER & HALLWAYS DEEMED EXEMPT UNDER NCC2013 D3.4 AS DIRECTED BY CLIENT. SHOULD THIS NEED COMPLIANCE, HALLWAY WIDTH NEED TO BE INCREASED

WINDOW SCHEDULE										
No.	TYPE	GLAZING	SIZE		SILL HEIGHT	MOULDS	SECURITY	CURTAINS	QTY	COMMENTS
			H	W						
W01	SLIDING, PV	OBSCURE GLASS	600	600	1703	PVC	-	-	2	
W02	SLIDING	GREY GLASS	900	1208	1000	PVC	-	-	6	
W03	SLIDING	GREY GLASS	900	1808	1000	PVC	-	-	3	
W04	FIXED	LAMINATED CLEAR GLASS	900	1208	1000	PVC	-	-	2	

MECHANICAL SCHEDULE				
No.	DESCRIPTION	SILL HEIGHT	QTY	COMMENTS
ME01	DOOR GRILLE (300Hx600W)		2	
ME02	EXHAUST FAN, WALL MOUNTED	1960	2	
ME03	AIR CONDITIONER, SPLIT SYSTEM, INVERTER - 2.6kW R/C	2035	2	
ME04	AIR CONDITIONER, SPLIT SYSTEM, INVERTER - 7.1kW R/C	1990	1	

CONFIRM DETAILS OF SET OUTS, LEVELS AND CRITICAL DIMENSIONS ON SITE PRIOR TO SHOP DRAWINGS AND FABRICATION. QUALITY CERTIFIED TO AS/NZS ISO 9001:2008 BY SCI-QUAL INTERNATIONAL REGN No. 531

DO NOT SCALE FROM THIS DRAWING. USE FIGURED DIMENSIONS OVERALL DIMENSIONS EXCLUDE EXTERNAL CLADDINGS U.N.O.

ALL CONSTRUCTION TO COMPLY WITH NATIONAL CONSTRUCTION CODE OF AUSTRALIA AND APPLICABLE AUSTRALIAN STANDARDS

THIS DRAWING REMAINS THE PROPERTY OF ATCO STRUCTURES & LOGISTICS PTY. LTD. (ATCO). IT MAY NOT BE REPRODUCED OR COPIED WHOLE OR IN PART WITHOUT WRITTEN AUTHORITY

REV	DESCRIPTION	DATE	BY	CHKD
A	ISSUED FOR REVIEW (CONCEPT DWG ONLY)	09.11.18	VT	



ATCO
 ATCO STRUCTURES & LOGISTICS PTY. LTD. PHONE: (07) 3412 8600
 55 TONKA STREET, LUSCOMBE, QLD 4207 FAX: (07) 3412 8699
 P.O. BOX 393, BEENLEIGH, QLD 4207 A.B.N. 71 083 902 309
 E-mail: ASLAu.Sales@atco.com

CLIENT CONCRUSH PTY LTD	TITLE SALES SCHEDULES
DESCRIPTION 14.4 x 4.4m WEIGHBRIDGE OFFICE/AMENITIES	PROJECT No. -
ADDRESS 21 RACECOURSE ROAD, TERALBA NSW 2284	SCALE AT A2
DRAWING NUMBER 181106 -A500	REVISION A