

AA/ NORTH SOUTH SECTION



BB/ EAST WEST SECTION



CC/ EAST WEST SECTION





CHARACTER, MATERIALITY & PLANT PALETTE

BENCHMARK IMAGES

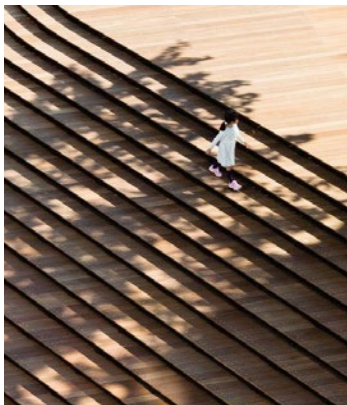
- 1/ Teleki Square, Budapest
- 2/ Darling Harbour, Sydney
- 3/ Granary Square, Kings Cross, London



PLANT PALETTE

- 1/ Waterhousia floribunda
- 2/ Brachychiton discolor
- 3/ Eucalyptus salignus

- 4/ Hymenosporum flavum
- 5/ Livistona australis
- 6/ Stenocarpus sinuatus



MATERIALITY

- 1/ Lawn
- 2/ Bleachers
- 3/ Furniture
- 4/ Stairs
- 5/ Paving
- 6/ Paving



TOWN PLAZA

VISION

A vibrant centre for the development, a hard paved town centre pedestrian street, activated by retail and community uses on both sides of the plaza. Outdoor dining will spill out onto the plaza, intermingled with events along the length of the street.

Character:

The plaza will be a hard paved space, under the canopy of extensive palm planting. A mixture of loose and fixed furniture will be located along the length of the plaza.

Function + Program:

A place where people come to dine, have a drink with friends and watch the world go by. The plaza is a paved area, with no vehicular access, allowing occasional events to occur within the plaza. To the western end, the plaza steps up to street level, forming a series of steps and platforms.

Topography

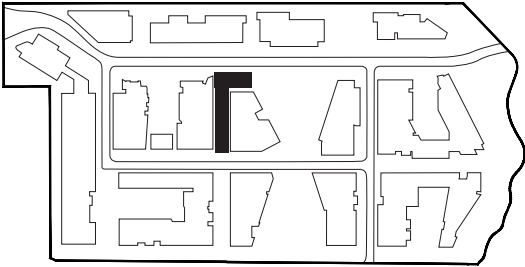
The plaza is relatively flat, tied into the ground floor RL's of the surrounding buildings. The plaza steps up to the adjacent street at the western end in a series of steps, platforms and an accessible 1:14 ramp.

Size + Scale

Approximately 1300m<sup>2</sup>



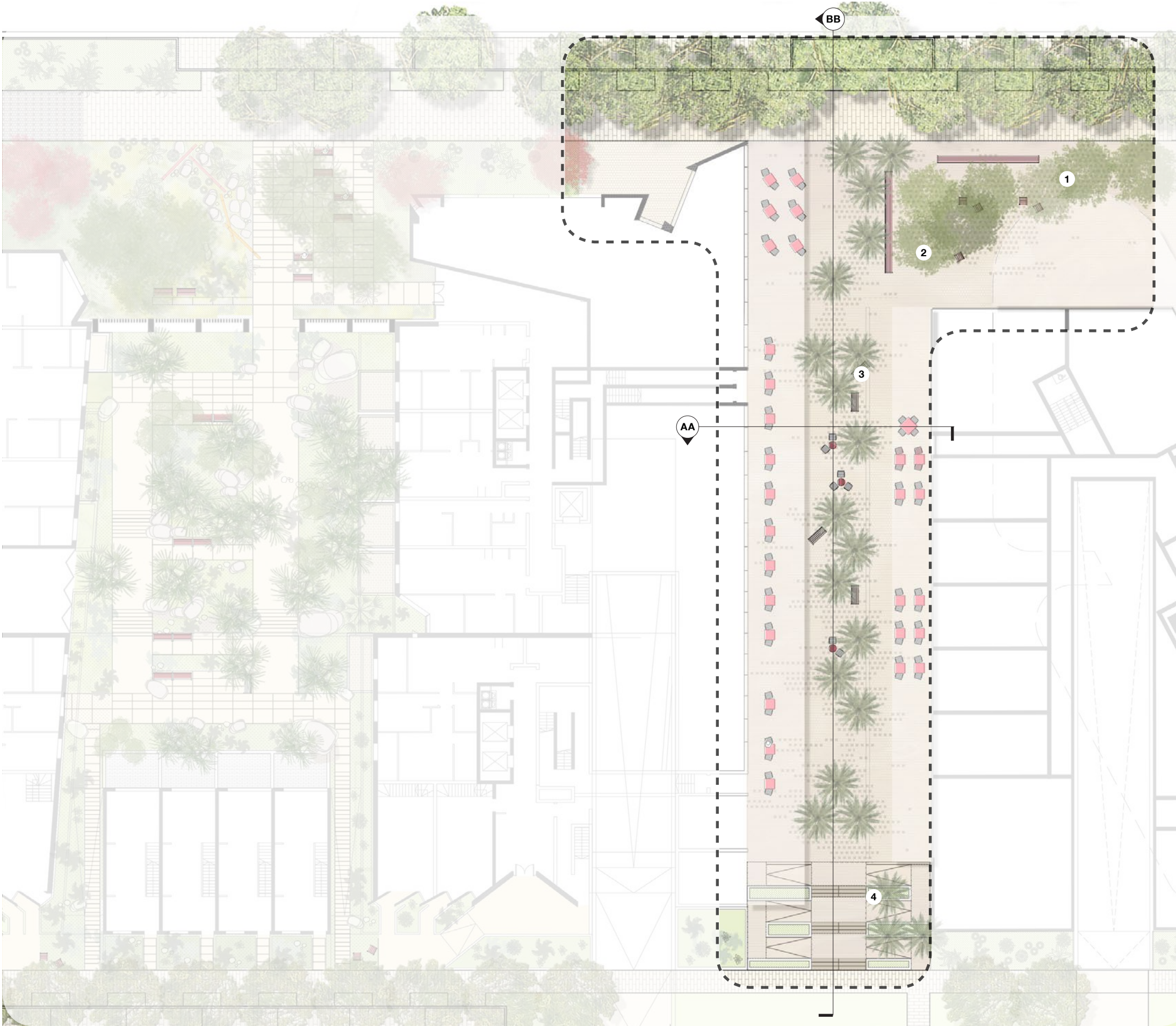




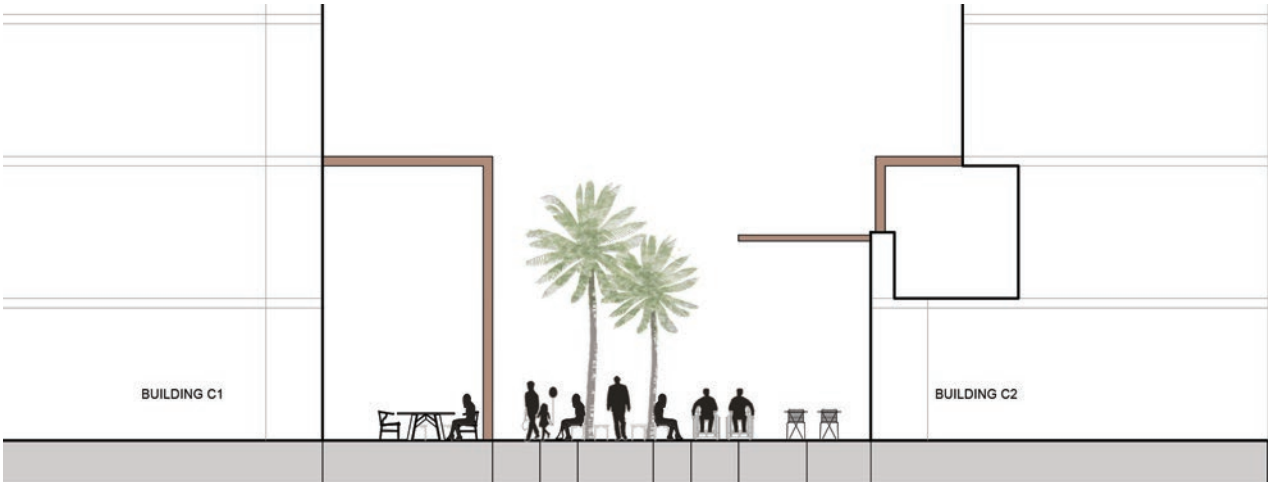
TOWN PLAZA

LEGEND

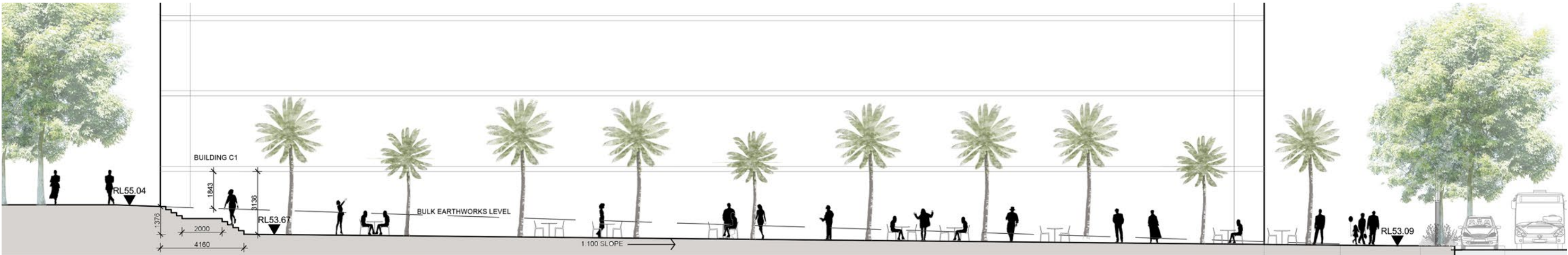
- 1/ Town Plaza paving extends into Main Street
- 2/ Street furniture, including long benches, individual fixed seats, loose furniture, tables, and out door dining furniture
- 3/ Palm planting
- 4/ Stepped access to neighbourhood street





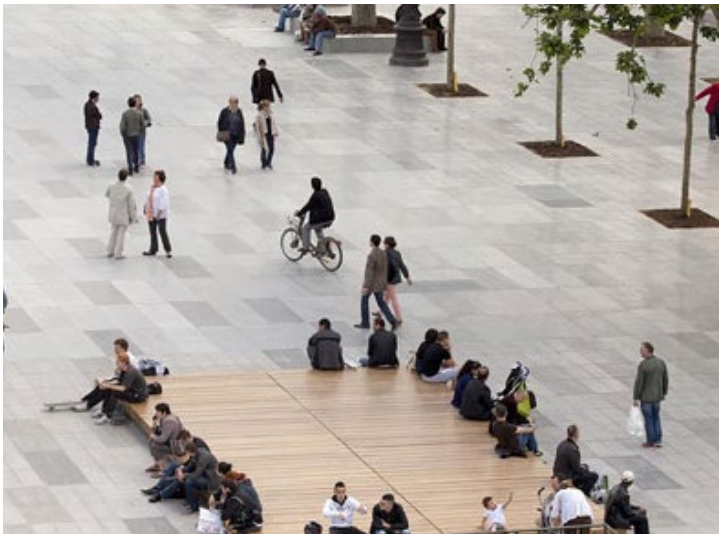


AA/ EAST-WEST ELEVATION



BB/ NORTH-SOUTH SECTION





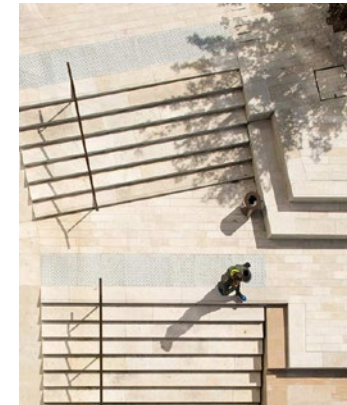
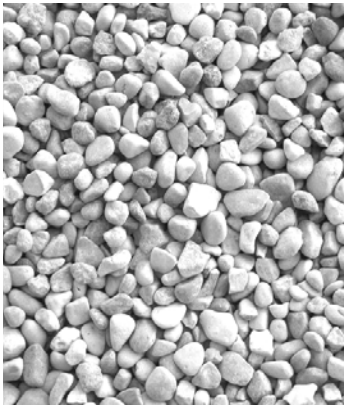
CHARACTER, MATERIALITY & PLANT PALETTE

**BENCHMARK IMAGES**  
1/ Pitt St Mall, Sydney  
2/ Place de la Republique, Paris



**PLANT PALETTE**  
1/ Glesitsia tricanthos var intermis  
2/ Howea forsteriana  
3/ Livistonia australis

4/ Palm tree bark texture  
5/ Palm tree bark texture  
6/ Palm tree bark



**MATERIALITY**  
1/ Paving  
2/ Paving  
3/ Gravel  
4/ Stairs  
5/ Furniture  
6/ Furniture



FOREST PLAYGROUND

VISION

A nature based playground aimed at 5yrs old and upwards, embedded into the natural history of the site. It will be a focus for the children of Ivanhoe, a place to be proud of and once that will be known throughout Ryde as the playground to come to for excitement, as well as the chance to hang out with friends.

Character:

The playground will be nature based, with timber materials, using a mixture of reclaimed materials and new pieces. The playground is set amongst existing trees and celebrates the steep topology of the site.

Function + Program:

A Playground for 5yrs and upwards.

Topography

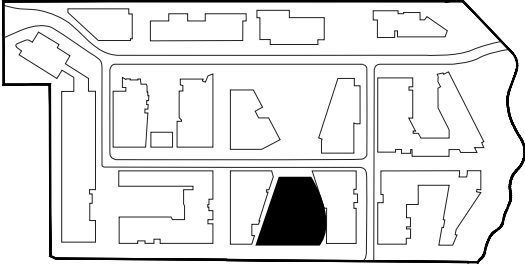
The playground is accessible from the neighbourhood street. It will be designed to work with the proposed levels of surrounding buildings and celebrate changes in level through playable items, sloping lawns and ramped footpaths. The playground slopes steeply to Epping Road and this will be achieved through gentle amphitheatre steps that wind through the existing trees.

Size + Scale

Approximately 3,900m²







FOREST PLAYGROUND

- LEGEND**
- 1/ The Forest playground
  - 2/ Elements of natural play, “spilling” into surrounding landscape, creating opportunities for exploration and discovery
  - 3/ Accessible route from Mission Australia garden to the Neighbourhood Street
  - 4/ Mission Australia garden
  - 5/ Accessible route from Mission Australia garden to playground
  - 6/ Stepped amphitheatre through existing trees
  - 7/ Potential link to Epping Road







AA/ NORTH-SOUTH ELEVATION



BB/ EAST-WEST SECTION





CHARACTER, MATERIALITY & PLANT PALETTE

**BENCHMARK IMAGES**  
1/ Adelaide Zoo Nature Play Space, Wax Design  
2/ Adelaide Zoo Nature Play Space, Wax Design  
3/ Cranbourne Gardens, Victoria. Taylor Culty Lethealan



**PLANT PALETTE**  
1/ Eucalyptus salignus  
2/ Melaleuca leucadendra  
3/ Pincushion Protea  
4/ Acacia pycnantha  
5/ Blechnum nudum  
6/ Xanthorrhoea glauca



**MATERIALITY**  
1/ Furniture  
2/ Gabion  
3/ Bleachers  
4/ Play equipment  
5/ Play equipment  
6/ Furniture



SCHOOL GARDEN AND PLAYGROUND

VISION

A vibrant active play and gathering area associate with the proposed school and child care centre. The area will offer the opportunities for organised sport, individual play, gathering areas and quieter garden moments associated with the child care centre.

Character:

Vibrant, colourful and educational. The space is intersected by the green link, tying the space into the wider public space network, both on site and beyond.

Function + Program:

An active play zone for exercise, team sports and school gatherings

Topography

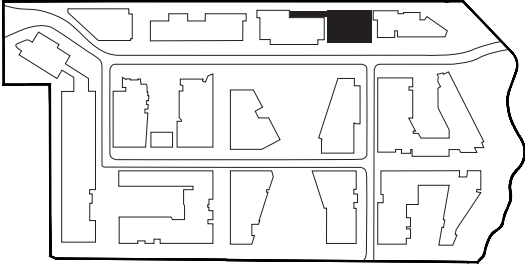
The playground will be relatively flat, with a steps down into the school play zone from the Green Link.

Size + Scale

Approximately 1,800m<sup>2</sup>

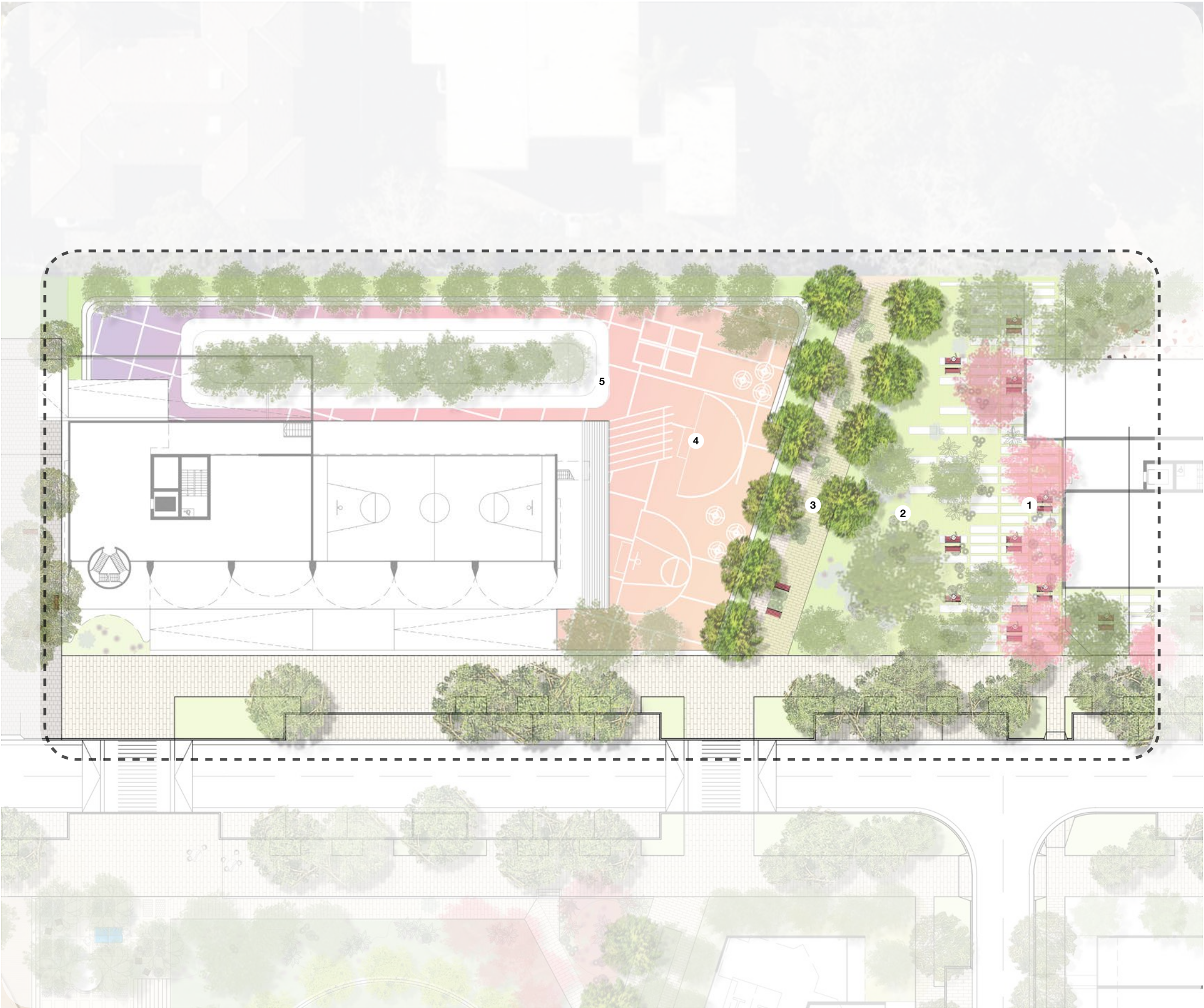






SCHOOL GARDEN

- LEGEND**
- 1/ Childcare garden area
  - 2/ Lawn
  - 3/ Green Link
  - 4/ Active play area
  - 5/ Running track







CHARACTER, MATERIALITY & PLANT PALETTE

**BENCHMARK IMAGES**  
1/ Lemvig Skatepark  
2/ Kathleen Grimm School, New York  
3/ Monash University, Taylor Culty Lethlean



**PLANT PALETTE**  
1/ Utmus parvifolia 'Todd'  
2/ Eucalyptus salignus  
3/ Acer platanoides 'Crimson King'  
4/ Philodendron 'Xanadu'  
5/ Rhapsiolepis 'Oriental Pearl'  
6/ Iris sibirica



**MATERIALITY**  
1/ Basketball court pattern  
2/ Paving  
3/ Bleachers  
4/ Paving  
5/ Lawn  
6/ Furniture



NEIGHBOURHOOD GARDENS

VISION

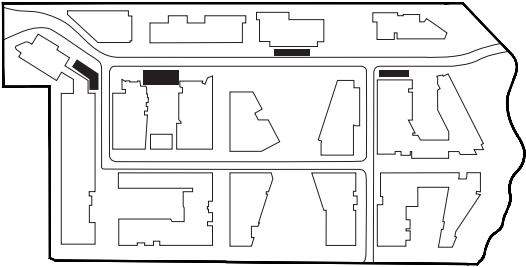
The Neighbourhood Gardens are located adjacent to the streets, and offer the opportunity to leave the street and sit under the shade of a tree, reading a book amongst intricate and colourful planting.

Character:

Relaxing, colourful and seasonal. Spaces and furniture created to allow individuals to sit quietly, or small groups to gather and chat







INDICATIVE PLAN

- LEGEND**
- 1/ Paved area with fixed furniture seating
  - 2/ Informal playable elements
  - 3/ Lawn with extensive tree planting







CHARACTER, MATERIALITY & PLANT PALETTE

BENCHMARK IMAGES

- 1/ Sorrento Garden, Fiona Brokhoff
- 2/ The Navy Yard Central Green, Philadelphia
- 3/ Birchbone Garden, Scotland



PLANT PALETTE

- 1/ Glesitsia tricanthos var intermis
- 2/ Cercis canadensis
- 3/ Ficus pumila 'Minima'
- 4/ Rhapsiolepis 'Oriental Pearl'
- 5/ Plectranthus argentatus silver shield
- 6/ Viola hederacea



MATERIALITY

- 1/ Paving
- 2/ Paving
- 3/ Retaining wall
- 4/ Paving
- 5/ Stairs
- 6/ Furniture



## FOREST THRESHOLDS

### VISION

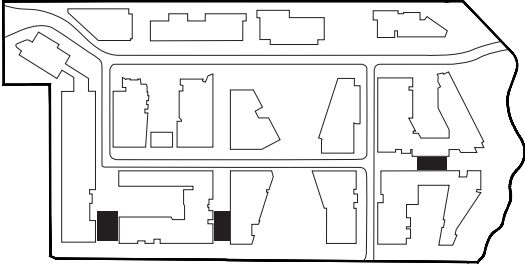
Located where the Neighbourhood meets forest, the forest thresholds also need to account for large changes in topography and this is celebrated through large stepped bleachers and amphitheatre steps.

Character:

Forested spaces, forming amphitheatres at the end of streets as a terminus to a vista. Informal seating is located under tree planting







INDICATIVE PLAN

- LEGEND**
- 1/Paved area with fixed furniture seating
  - 2/Step lawn steps and amphitheatre
  - 3/Retaining wall to protected vegetation







CHARACTER, MATERIALITY & PLANT PALETTE

**BENCHMARK IMAGES**  
1/ Gustave & Leonard Hentsch Park, Geneva  
2/ Musk Cottage, Flinders New Zealand  
3/ Victoria Park, Sydney

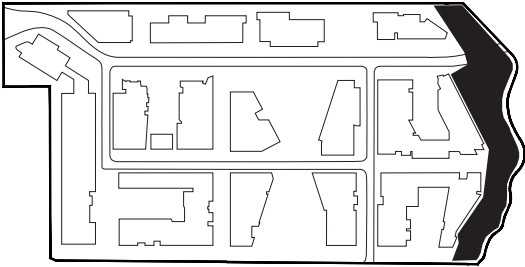


**PLANT PALETTE**  
1/ Pittosporum undulatum  
2/ Allocasuarina torulosa  
3/ Macrozamia communis  
4/ Livistonia australis  
5/ Eucalyptus salignus  
6/ Tristaniopsis laurina



**MATERIALITY**  
1/ Bleachers  
2/ Pavings  
3/ Furniture  
4/ Furniture  
5/ Stairs  
6/ Lawn





SHRIMPTONS CREEK

VISION

The Shrimpton Creek landscape acts as the threshold between the development's built form and existing riparian zone. Multiple access points facilitate the filtering of people from the development down to the linear creek edge. A primary, linear path provides an edge to a series of raingardens that are intended to not only treat surface runoff from the development before entering creek but also provide a physical barrier between private and public space without the use of a fence. This path is juxtaposed against a secondary meandering boardwalk that weaves through the landscape in response to trees, slope, and experience of the water's edge.

Character:  
River-flat eucalypt forest and riparian zone. The juxtaposition of strong circulation forms. Meandering landscape with Informal seating and social spaces along Shrimptons Creek. Unique and animated use of redundant space from the bridge construction. Restrained material palette.





INDICATIVE PLAN

LEGEND

- 1/ Boardwalk structure running in the middle of the existing concrete culvert
- 2/ Concrete cycle link. Potential separation between private and public landscape
- 3/ The wetland will collect the site water and clean it before discharging into Shrimptons Creek. It will also act as a buffer between the buildings and the public opens space.
- 4/ Sinuous pedestrian link decking along the riparian corridor with lookout points and picnic areas
- 5/ Access staircase from The Neighbourhood Mews
- 6/ Neighbourhood Mews as shared zone paved and landscaped providing vehicle access to basement car parks and adjacent dwellings.
- 7/ Existing major trees to be retained
- 8/ Raingarden deck and multifunctional space
- 9/ Skate Park utilising the space under the bridge
- 10/ Accessible shared access ramp to Shrimptons Creek
- 11/ Lookout
- 12/ Sinuous pedestrian bridge under road bridge
- 13/ All ages ability exercise stations





TYPICAL SECTION & PLAN

