

SUBSURFACE UTILITY INVESTIGATION (SUI) QUALITY LEVEL LABELLING UTILITY INFORMATION BY A CLASSIFICATION CODE ALLOWS THE USER OF THIS INFORMATION TO UNDERSTAND CLEARLY HOW THE INFORMATION WAS COLLECTED AND THEN PLACE AN APPROPRIATE AMOUNT OF RELIANCE ON IT. PROJECT RISKS RELATED TO UNDERGROUND UTILITIES CAN THEN BE PROPERLY MANAGED.

QL - 'A': INFORMATION IS THE HIGHEST POSSIBLE LEVEL OF ACCURACY AND IS OBTAINED BY EXPOSING THE UNDERGROUND UTILITY USING A NON-DESTRUCTIVE EXCAVATION (POTHOLING) TECHNIQUE. THE VERTICAL INFORMATION FOR THIS LOCATING METHOD IS TO THE TOP OR SHALLOWEST PART OF THE LOCATED SERVICE. THE 3D LOCATION IS RECORDED BY SURVEY AS AN X, Y, Z COORDINATE.

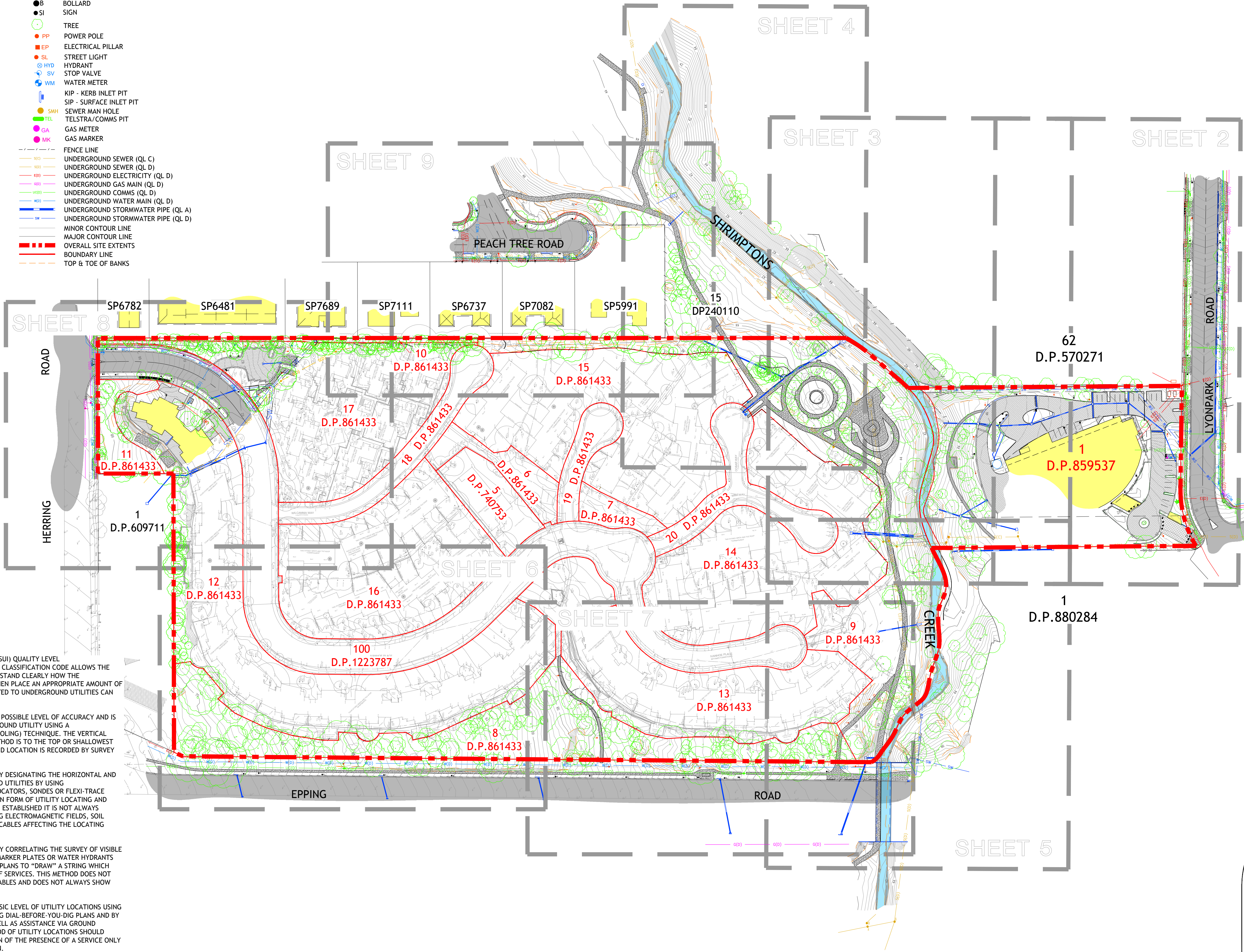
QL - 'B': INFORMATION IS COLLECTED BY DESIGNATING THE HORIZONTAL AND VERTICAL LOCATION OF UNDERGROUND UTILITIES BY USING ELECTROMAGNETIC PIPE AND CABLE LOCATORS, SONDES OR FLEXI-TRACE EQUIPMENT. THIS IS THE MOST COMMON FORM OF UTILITY LOCATING AND ALTHOUGH AN X, Y AND Z AXIS CAN BE ESTABLISHED IT IS NOT ALWAYS ENTIRELY ACCURATE DUE TO DIFFERING ELECTROMAGNETIC FIELDS, SOIL CONDITIONS AND MULTIPLE BANKS OF CABLES AFFECTING THE LOCATING SIGNAL.

QL - 'C': INFORMATION IS COLLECTED BY CORRELATING THE SURVEY OF VISIBLE UTILITY SURFACE FEATURES SUCH AS MARKER PLATES OR WATER HYDRANTS AND ACQUIRED DIAL-BEFORE-YOU-DIG PLANS TO "DRAW" A STRING WHICH SHOWS THE APPROXIMATE POSITION OF SERVICES. THIS METHOD DOES NOT USUALLY SHOW MULTIPLE BANKS OF CABLES AND DOES NOT ALWAYS SHOW THREE DIMENSIONAL INFORMATION.

QL - 'D': INFORMATION IS THE MOST BASIC LEVEL OF UTILITY LOCATIONS USING ONLY INFORMATION BASED ON EXISTING DIAL-BEFORE-YOU-DIG PLANS AND BY MEASURING BOUNDARY OFFSETS AS WELL AS ASSISTANCE VIA GROUND PENETRATING RADAR ETC. THIS METHOD OF UTILITY LOCATIONS SHOULD ALWAYS BE TREATED AS AN INDICATION OF THE PRESENCE OF A SERVICE ONLY AND SHOULD NOT BE USED FOR DESIGN.

REFER TO LEGEND FOR QUALITY LEVEL CLASSIFICATIONS OF SERVICES.  
ALL UTILITIES ARE QL - 'D' UNLESS OTHERWISE NOTED

- LEGEND**
- PHOTOGRAPH DIRECTION
  - COLUMN
  - PARKING METER
  - BOLLARD
  - SIGN
  - TREE
  - PP POWER POLE
  - EP ELECTRICAL PILLAR
  - SL STREET LIGHT
  - HYD HYDRANT
  - SV STOP VALVE
  - WM WATER METER
  - KIP - KERB INLET PIT
  - SIP - SURFACE INLET PIT
  - SMH SEWER MAIN HOLE
  - TEL TELSTRA/COMMS PIT
  - GA GAS METER
  - MK GAS MARKER
  - FENCE LINE
  - UCS UNDERGROUND SEWER (QL C)
  - UCD UNDERGROUND SEWER (QL D)
  - UES UNDERGROUND ELECTRICITY (QL D)
  - UGM UNDERGROUND GAS MAIN (QL D)
  - UCOM UNDERGROUND COMMS (QL D)
  - UWM UNDERGROUND WATER MAIN (QL D)
  - USP UNDERGROUND STORMWATER PIPE (QL A)
  - USD UNDERGROUND STORMWATER PIPE (QL D)
  - MINOR CONTOUR LINE
  - MAJOR CONTOUR LINE
  - OVERALL SITE EXTENTS
  - BOUNDARY LINE
  - TOP & TOE OF BANKS



- NOTES:-**
- PLEASE REFER TO AS5488-2013-CLASSIFICATION OF SUBSURFACE UTILITY INFORMATION (SUI) FOR THE DEFINITION OF SERVICE LOCATION ACCURACIES SHOWN IN THIS PLAN.
  - ALL UNDERGROUND UTILITIES SHOWN ON THIS PLAN HAVE BEEN PLOTTED BY ESTIMATION BASED UPON SUPPLIED DBYD INFORMATION PLANS. ADDITIONAL SERVICES MAY EXIST THROUGHOUT THE SITE. TRUE LEVELS & POSITION WILL NEED TO BE VERIFIED BY POTHOLES BEFORE ANY CONSTRUCTION COMMENCES.
  - BOUNDARIES AND DIMENSIONS SHOWN ON THIS PLAN HAVE BEEN PLOTTED BY ESTIMATION BASED UPON SUPPLIED DBYD INFORMATION PLANS. ADDITIONAL SERVICES MAY EXIST THROUGHOUT THE SITE. TRUE LEVELS & POSITION WILL NEED TO BE VERIFIED BY POTHOLES BEFORE ANY CONSTRUCTION COMMENCES.
  - OTHER EASEMENTS AND ENCUMBRANCES EXIST WHICH HAVE NOT BEEN SHOWN ON THIS PLAN. NO EASEMENT OR ENCUMBRANCES HAVE BEEN INVESTIGATED OR SHOWN ON ADJOINING PROPERTIES.
  - SPOT LEVELS AND CONTOURS SHOWN HEREON ARE FOR DESIGN PURPOSES ONLY AND ARE TO BE CONFIRMED ON SITE PRIOR TO ANY EXCAVATION OR CONSTRUCTION.
  - THIS PLAN HAS BEEN PREPARED FOR THE PURPOSE OF DESIGN AND SHOULD NOT BE USED FOR ANYTHING OTHER THAN THAT PURPOSE.
  - SOME SPOT LEVELS HAVE BEEN REMOVED FROM THE FACE OF THIS PLAN FOR CLARITY. ADDITIONAL SPOT LEVELS CAN BE ACCESSED ON THE ELECTRONIC COPY OF THIS PLAN FOR MORE DETAILED DESIGN WORKS.
  - BACKGROUND SURVEY INFORMATION HAS BEEN SOURCED FROM CONTOUR & DETAIL PLAN FROM LAND AND HOUSING CORPORATIONS REF. 8907/001/01, DATED 03/2007.

drawing title:  
**PLAN SHOWING DETAIL & CONTOURS OVER PART OF THE IVANHOE ESTATE REDEVELOPMENT SITE**

location:  
**HERRING & EPPING ROADS, MACQUAIRE PARK.**

council: **RYDE**

dwg ref: **300001-DET-004**

client:  
**ASPIRE CONSORTIUM**

central coast office ph: (02) 4305 4300  
hunter office ph: (02) 4978 5100  
sydney office ph: (02) 8046 7411  
[www.adwjohanson.com.au](http://www.adwjohanson.com.au)

ver.	date	comment	surveyed	drawn	checked	pm	co-ordinate information	level information	scale (A1 original size)	page
A	02.11.17	INITIAL ISSUE	DK/CG/PR	PB	CG	MO	CO-ORDINATE SYSTEM: MGA 56 GROUND ORIGIN OF CO-ORDINATES: P.M.50023 DATE OF SURVEY 05.07.17	DATUM: AHD ORIGIN OF LEVELS: P.M.50023 CONTOUR INTERVAL: 0.25m	0 25 50m SCALE: 1:1000 (FULL)	1 OF 9

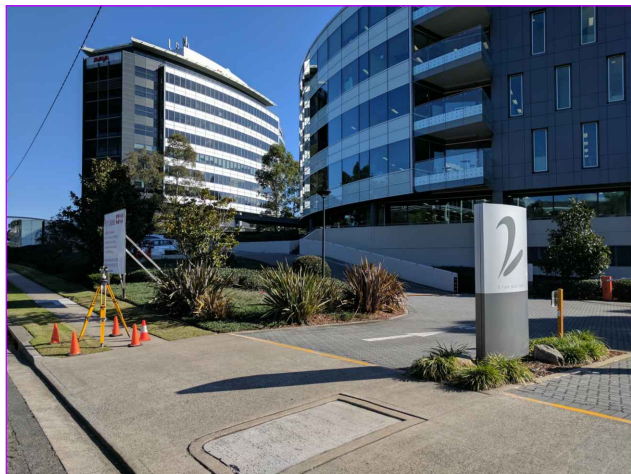
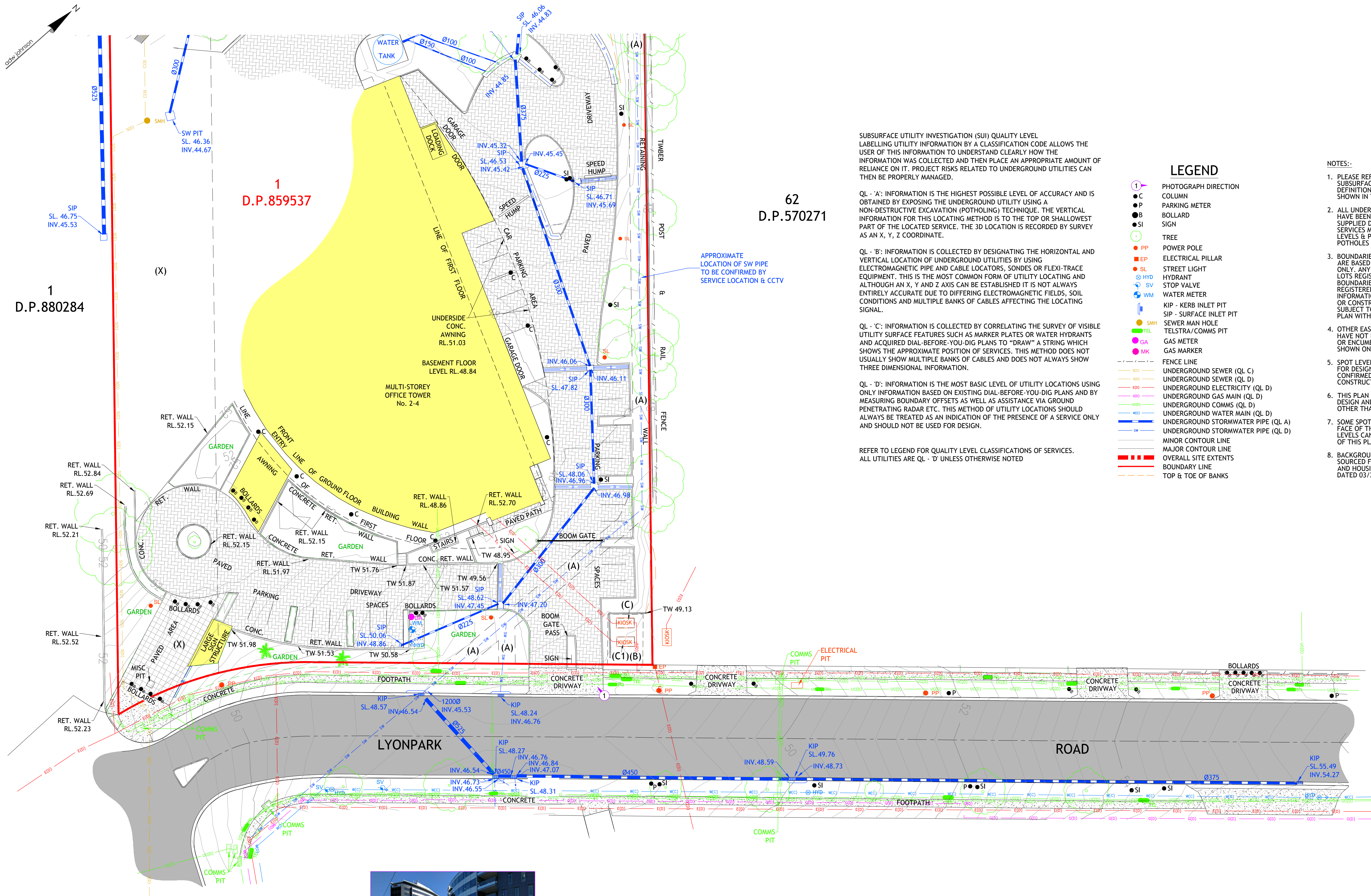
- project management
- civil engineering
- infrastructure
- superintendency
- economic analysis
- social impact
- town planning
- surveying
- development feasibility
- visualisation
- urban design

**WARNING**  
UNDERGROUND  
ELECTRICITY LINES

**WARNING**  
UNDERGROUND  
OPTICAL FIBRE







PHOTOGRAPH 1

**WARNING**  
UNDERGROUND  
ELECTRICITY LINES

**WARNING**  
UNDERGROUND  
OPTICAL FIBRE

SUBSURFACE UTILITY INVESTIGATION (SUI) QUALITY LEVEL  
LABELLING UTILITY INFORMATION BY A CLASSIFICATION CODE ALLOWS THE USER OF THIS INFORMATION TO UNDERSTAND CLEARLY HOW THE INFORMATION WAS COLLECTED AND THEN PLACE AN APPROPRIATE AMOUNT OF RELIANCE ON IT. PROJECT RISKS RELATED TO UNDERGROUND UTILITIES CAN THEN BE PROPERLY MANAGED.

QL - 'A': INFORMATION IS THE HIGHEST POSSIBLE LEVEL OF ACCURACY AND IS OBTAINED BY EXPOSING THE UNDERGROUND UTILITY USING A NON-DESTRUCTIVE EXCAVATION (POTHOLING) TECHNIQUE. THE VERTICAL INFORMATION FOR THIS LOCATING METHOD IS TO THE TOP OR SHALLOWEST PART OF THE LOCATED SERVICE. THE 3D LOCATION IS RECORDED BY SURVEY AS AN X, Y, Z COORDINATE.

QL - 'B': INFORMATION IS COLLECTED BY DESIGNATING THE HORIZONTAL AND VERTICAL LOCATION OF UNDERGROUND UTILITIES BY USING ELECTROMAGNETIC PIPE AND CABLE LOCATORS, SONDES OR FLEXI-TRACE EQUIPMENT. THIS IS THE MOST COMMON FORM OF UTILITY LOCATING AND ALTHOUGH AN X, Y AND Z AXIS CAN BE ESTABLISHED IT IS NOT ALWAYS ENTIRELY ACCURATE DUE TO DIFFERING ELECTROMAGNETIC FIELDS, SOIL CONDITIONS AND MULTIPLE BANKS OF CABLES AFFECTING THE LOCATING SIGNAL.

QL - 'C': INFORMATION IS COLLECTED BY CORRELATING THE SURVEY OF VISIBLE UTILITY SURFACE FEATURES SUCH AS MARKER PLATES OR WATER HYDRANTS AND ACQUIRED DIAL-BEFORE-YOU-DIG PLANS TO "DRAW" A STRING WHICH SHOWS THE APPROXIMATE POSITION OF SERVICES. THIS METHOD DOES NOT USUALLY SHOW MULTIPLE BANKS OF CABLES AND DOES NOT ALWAYS SHOW THREE DIMENSIONAL INFORMATION.

QL - 'D': INFORMATION IS THE MOST BASIC LEVEL OF UTILITY LOCATIONS USING ONLY INFORMATION BASED ON EXISTING DIAL-BEFORE-YOU-DIG PLANS AND BY MEASURING BOUNDARY OFFSETS AS WELL AS ASSISTANCE VIA GROUND PENETRATING RADAR ETC. THIS METHOD OF UTILITY LOCATIONS SHOULD ALWAYS BE TREATED AS AN INDICATION OF THE PRESENCE OF A SERVICE ONLY AND SHOULD NOT BE USED FOR DESIGN.

REFER TO LEGEND FOR QUALITY LEVEL CLASSIFICATIONS OF SERVICES.  
ALL UTILITIES ARE QL - 'D' UNLESS OTHERWISE NOTED

## LEGEND

- 1 PHOTOGRAPH DIRECTION
- C COLUMN
- P PARKING METER
- B BOLLARD
- SI SIGN
- TREE
- PP POWER POLE
- EP ELECTRICAL PILLAR
- SL STREET LIGHT
- HYD HYDRANT
- SV STOP VALVE
- WM WATER METER
- KIP - KERB INLET PIT
- SIP - SURFACE INLET PIT
- SMH SEWER MAN HOLE
- TEL TELSTRA/COMMS PIT
- GA GAS METER
- MK GAS MARKER
- FENCE LINE
- UC(C) UNDERGROUND SEWER (QL C)
- UD(C) UNDERGROUND SEWER (QL D)
- EC(C) UNDERGROUND ELECTRICITY (QL C)
- ED(C) UNDERGROUND GAS MAIN (QL D)
- UC(D) UNDERGROUND COMMS (QL D)
- UD(D) UNDERGROUND WATER MAIN (QL D)
- SW UNDERGROUND STORMWATER PIPE (QL A)
- SW UNDERGROUND STORMWATER PIPE (QL D)
- MINOR CONTOUR LINE
- MAJOR CONTOUR LINE
- OVERALL SITE EXTENTS
- BOUNDARY LINE
- TOP & TOE OF BANKS

## NOTES:-

- PLEASE REFER TO AS5488-2013-CLASSIFICATION OF SUBSURFACE UTILITY INFORMATION (SUI) FOR THE DEFINITION OF SERVICE LOCATION ACCURACIES SHOWN IN THIS PLAN.
- ALL UNDERGROUND UTILITIES SHOWN ON THIS PLAN HAVE BEEN PLOTTED BY ESTIMATION BASED UPON SUPPLIED DBYD INFORMATION PLANS. ADDITIONAL SERVICES MAY EXIST THROUGHOUT THE SITE. TRUE LEVELS & POSITION WILL NEED TO BE VERIFIED BY POTHOLES BEFORE ANY CONSTRUCTION COMMENCES.
- BOUNDARIES AND DIMENSIONS SHOWN ON THIS PLAN ARE BASED ON PRELIMINARY BOUNDARY DEFINITION ONLY. ANY FUTURE PLAN OF SURVEY OF ADJOINING LOTS REGISTERED MAY IMPACT THE SUBJECT BOUNDARIES. IT IS RECOMMENDED THAT A PLAN BE REGISTERED WITH THE LAND AND PROPERTY INFORMATION (LPI) PRIOR TO ANY DETAILED DESIGN OR CONSTRUCTION. ALL DIMENSIONS AND AREAS ARE SUBJECT TO FINAL SURVEY AND REGISTRATION OF A PLAN WITH LPI.
- OTHER EASEMENTS AND ENCUMBRANCES EXIST WHICH HAVE NOT BEEN SHOWN ON THIS PLAN. NO EASEMENT OR ENCUMBRANCES HAVE BEEN INVESTIGATED OR SHOWN ON ADJOINING PROPERTIES.
- SPOT LEVELS AND CONTOURS SHOWN HEREON ARE FOR DESIGN PURPOSES ONLY AND ARE TO BE CONFIRMED ON SITE PRIOR TO ANY EXCAVATION OR CONSTRUCTION.
- THIS PLAN HAS BEEN PREPARED FOR THE PURPOSE OF DESIGN AND SHOULD NOT BE USED FOR ANYTHING OTHER THAN THAT PURPOSE.
- SOME SPOT LEVELS HAVE BEEN REMOVED FROM THE FACE OF THIS PLAN FOR CLARITY. ADDITIONAL SPOT LEVELS CAN BE ACCESSED ON THE ELECTRONIC COPY OF THIS PLAN FOR MORE DETAILED DESIGN WORKS.
- BACKGROUND SURVEY INFORMATION HAS BEEN SOURCED FROM CONTOUR & DETAIL PLAN FROM LAND AND HOUSING CORPORATIONS REF. 8907/001/01, DATED 03/2007.

ver.	date	comment	surveyed	drawn	checked	pm	co-ordinate information	level information	scale (A1 original size)	page
A	02.11.17	INITIAL ISSUE	DK/CG/PR	PB	CG	MO	CO-ORDINATE SYSTEM: MGA 56 GROUND ORIGIN OF CO-ORDINATES: P.M.50023 DATE OF SURVEY: 05.07.17	DATUM: AHD ORIGIN OF LEVELS: P.M.50023 CONTOUR INTERVAL: 0.25m	0 6.0 12.0 15.0m SCALE: 1:300 (FULL)	2 OF 9

• project management • civil engineering • infrastructure • superintendency • economic analysis • social impact • town planning • surveying • development feasibility • visualisation • urban design



drawing title:  
PLAN SHOWING DETAIL &  
CONTOURS OVER PART OF  
THE IVANHOE ESTATE  
REDEVELOPMENT SITE

location: HERRING & EPPING  
ROADS, MACQUAIRE  
PARK.

council: RYDE

dwg ref: 300001-DET-004

client:

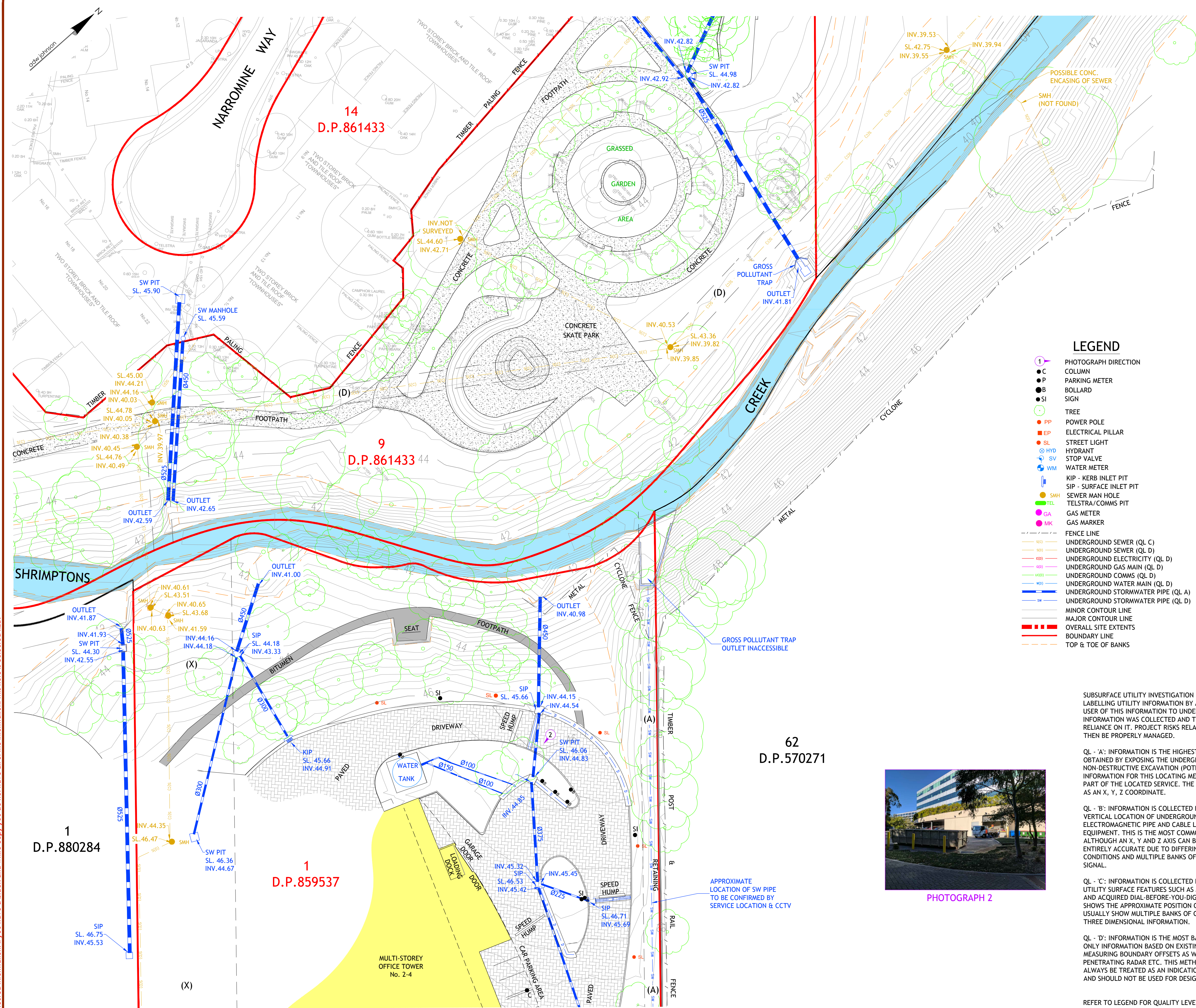
ASPIRE  
CONSORTIUM



central coast office ph: (02) 4305 4300  
hunter office ph: (02) 4978 5100  
sydney office ph: (02) 8046 7411

www.adwjohanson.com.au





- (A) EASEMENT FOR DRAINAGE 2.5 WIDE & VARIABLE WIDTH (VIDE R507051)  
(B) RIGHT OF WAY & EASEMENT FOR ELECTRICITY PURPOSES 5.35 WIDE (VIDE 8712011)  
(C) LEASE TO AUSGRID SUBSTATION PREMISE No.7958 (VIDE 8712011)  
(C1) LEASE TO AUSGRID SUBSTATION PREMISE No.7959 (VIDE 8712011)  
(D) EASEMENT FOR SEWER PIPE LINE (VIDE M50338 & D.P.535722)  
(X) LAND EXCLUDES MINERALS - CROWN GRANT  
5235A CROWN LAND CONSOLIDATION ACT, 1913

- OTHER TITLE NOTIFICATIONS
- LOT 1 D.P.859537:  
• IS SUBJECT TO NUMEROUS LEASES. THE CONSENT OF THE LESSEES WILL BE REQUIRED FOR ANY PROPOSED DEALINGS AFFECTING THE LAND.
- LOT 9 D.P.861433:  
• IS SUBJECT TO ANY EASEMENTS, RESTRICTIVE COVENANTS AND PUBLIC RIGHTS OF WAY AFFECTING IT ON 2.2.1944 AS PRESERVED BY S.604(2) LOCAL GOV. ACT, 1919;  
• IS AFFECTED BY COVENANT S142036.

LEGEND

- 1 PHOTOGRAPH DIRECTION
- C COLUMN
- P PARKING METER
- B BOLLARD
- SI SIGN
- TREE
- PP POWER POLE
- EP ELECTRICAL PILLAR
- SL STREET LIGHT
- HYD HYDRANT
- SV STOP VALVE
- WM WATER METER
- KIP - KERB INLET PIT
- SIP - SURFACE INLET PIT
- SMH SEWER MAN HOLE
- TEL TELSTRA/COMMS PIT
- GA GAS METER
- MK GAS MARKER
- FENCE LINE
- UNDERGROUND SEWER (QL C)
- UNDERGROUND SEWER (QL D)
- UNDERGROUND ELECTRICITY (QL D)
- UNDERGROUND GAS MAIN (QL D)
- UNDERGROUND COMMS (QL D)
- UNDERGROUND WATER MAIN (QL D)
- UNDERGROUND STORMWATER PIPE (QL A)
- UNDERGROUND STORMWATER PIPE (QL D)
- MINOR CONTOUR LINE
- MAJOR CONTOUR LINE
- OVERALL SITE EXTENTS
- BOUNDARY LINE
- TOP & TOE OF BANKS

- NOTES:-
- PLEASE REFER TO AS5488-2013 CLASSIFICATION OF SUBSURFACE UTILITY INFORMATION (SUI) FOR THE DEFINITION OF SERVICE LOCATION ACCURACIES SHOWN IN THIS PLAN.
  - ALL UNDERGROUND UTILITIES SHOWN ON THIS PLAN HAVE BEEN PLOTTED BY ESTIMATION BASED UPON SUPPLIED DBYD INFORMATION PLANS. ADDITIONAL SERVICES MAY EXIST THROUGHOUT THE SITE. TRUE LEVELS & POSITION WILL NEED TO BE VERIFIED BY POTHLES BEFORE ANY CONSTRUCTION COMMENCES.
  - BOUNDARIES AND DIMENSIONS SHOWN ON THIS PLAN ARE BASED ON PRELIMINARY BOUNDARY DEFINITION ONLY. ANY FUTURE PLAN OF SURVEY OF ADJOINING LOTS REGISTERED MAY IMPACT THE SUBJECT BOUNDARIES. IT IS RECOMMENDED THAT A PLAN BE REGISTERED WITH THE LAND AND PROPERTY INFORMATION (LPI) PRIOR TO ANY DETAILED DESIGN OR CONSTRUCTION. ALL DIMENSIONS AND AREAS ARE SUBJECT TO FINAL SURVEY AND REGISTRATION OF A PLAN WITH LPI.
  - OTHER EASEMENTS AND ENCUMBRANCES EXIST WHICH HAVE NOT BEEN SHOWN ON THIS PLAN. NO EASEMENT OR ENCUMBRANCES HAVE BEEN INVESTIGATED OR SHOWN ON ADJOINING PROPERTIES.
  - SPOT LEVELS AND CONTOURS SHOWN HEREON ARE FOR DESIGN PURPOSES ONLY AND ARE TO BE CONFIRMED ON SITE PRIOR TO ANY EXCAVATION OR CONSTRUCTION.
  - THIS PLAN HAS BEEN PREPARED FOR THE PURPOSE OF DESIGN AND SHOULD NOT BE USED FOR ANYTHING OTHER THAN THAT PURPOSE.
  - SOME SPOT LEVELS HAVE BEEN REMOVED FROM THE FACE OF THIS PLAN FOR CLARITY. ADDITIONAL SPOT LEVELS CAN BE ACCESSED ON THE ELECTRONIC COPY OF THIS PLAN FOR MORE DETAILED DESIGN WORKS.
  - BACKGROUND SURVEY INFORMATION HAS BEEN SOURCED FROM CONTOUR & DETAIL PLAN FROM LAND AND HOUSING CORPORATIONS REF. 8907/001/01, DATED 03/2007.

SUBSURFACE UTILITY INVESTIGATION (SUI) QUALITY LEVEL LABELLING UTILITY INFORMATION BY A CLASSIFICATION CODE ALLOWS THE USER OF THIS INFORMATION TO UNDERSTAND CLEARLY HOW THE INFORMATION WAS COLLECTED AND THEN PLACE AN APPROPRIATE AMOUNT OF RELIANCE ON IT. PROJECT RISKS RELATED TO UNDERGROUND UTILITIES CAN THEN BE PROPERLY MANAGED.

QL - 'A': INFORMATION IS THE HIGHEST POSSIBLE LEVEL OF ACCURACY AND IS OBTAINED BY EXPOSING THE UNDERGROUND UTILITY USING A NON-DESTRUCTIVE EXCAVATION (POTHOLING) TECHNIQUE. THE VERTICAL INFORMATION FOR THIS LOCATING METHOD IS TO THE TOP OR SHALLOWEST PART OF THE LOCATED SERVICE. THE 3D LOCATION IS RECORDED BY SURVEY AS AN X, Y, Z COORDINATE.

QL - 'B': INFORMATION IS COLLECTED BY DESIGNATING THE HORIZONTAL AND VERTICAL LOCATION OF UNDERGROUND UTILITIES BY USING ELECTROMAGNETIC PIPE AND CABLE LOCATORS, SONDES OR FLEXI-TRACE EQUIPMENT. THIS IS THE MOST COMMON FORM OF UTILITY LOCATING AND ALTHOUGH AN X, Y AND Z AXIS CAN BE ESTABLISHED IT IS NOT ALWAYS ENTIRELY ACCURATE DUE TO DIFFERING ELECTROMAGNETIC FIELDS, SOIL CONDITIONS AND MULTIPLE BANKS OF CABLES AFFECTING THE LOCATING SIGNAL.

QL - 'C': INFORMATION IS COLLECTED BY CORRELATING THE SURVEY OF VISIBLE UTILITY SURFACE FEATURES SUCH AS MARKER PLATES OR WATER HYDRANTS AND ACQUIRED DIAL-BEFORE-YOU-DIG PLANS TO "DRAW" A STRING WHICH SHOWS THE APPROXIMATE POSITION OF SERVICES. THIS METHOD DOES NOT USUALLY SHOW MULTIPLE BANKS OF CABLES AND DOES NOT ALWAYS SHOW THREE DIMENSIONAL INFORMATION.

QL - 'D': INFORMATION IS THE MOST BASIC LEVEL OF UTILITY LOCATIONS USING ONLY INFORMATION BASED ON EXISTING DIAL-BEFORE-YOU-DIG PLANS AND BY MEASURING BOUNDARY OFFSETS AS WELL AS ASSISTANCE VIA GROUND PENETRATING RADAR ETC. THIS METHOD OF UTILITY LOCATIONS SHOULD ALWAYS BE TREATED AS AN INDICATION OF THE PRESENCE OF A SERVICE ONLY AND SHOULD NOT BE USED FOR DESIGN.

REFER TO LEGEND FOR QUALITY LEVEL CLASSIFICATIONS OF SERVICES. ALL UTILITIES ARE QL - 'D' UNLESS OTHERWISE NOTED



PHOTOGRAPH 2

ver.	date	comment	surveyed	drawn	checked	pm	co-ordinate information	level information	scale (A1 original size)	page
A	02.11.17	INITIAL ISSUE	DK/CG/PR	PB	CG	MO	CO-ORDINATE SYSTEM: MGA 56 GROUND ORIGIN OF CO-ORDINATES: P.M.50023 DATE OF SURVEY 05.07.17	DATUM: AHD ORIGIN OF LEVELS: P.M.50023 CONTOUR INTERVAL: 0.25m	0 6.0 12.0 15.0m SCALE: 1:300 (FULL)	3 OF 9



WARNING UNDERGROUND ELECTRICITY LINES  
WARNING UNDERGROUND OPTICAL FIBRE

drawing title:  
PLAN SHOWING DETAIL & CONTOURS OVER PART OF THE IVANHOE ESTATE REDEVELOPMENT SITE

location: HERRING & EPPING ROADS, MACQUAIRE PARK.

council: RYDE

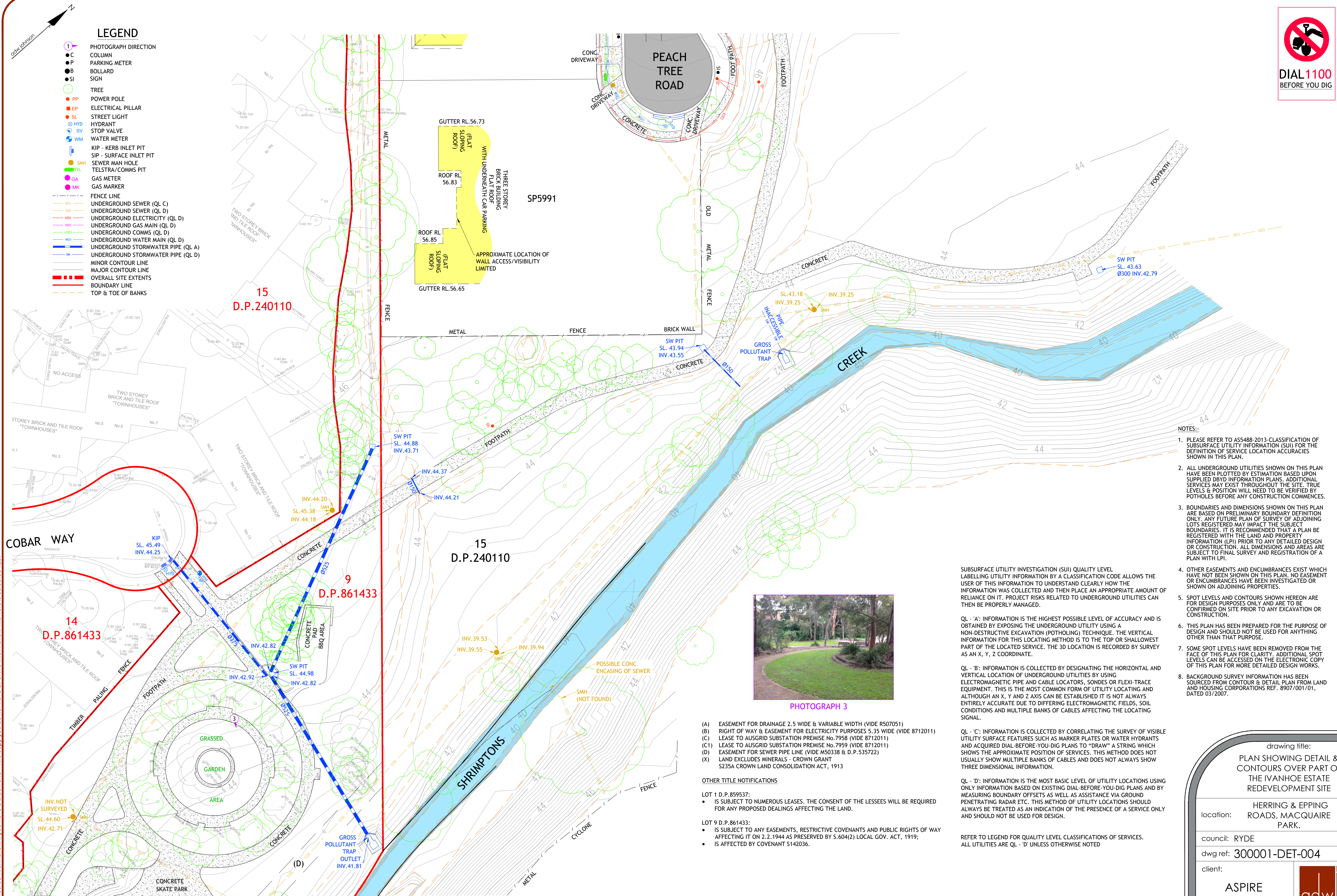
dwg ref: 300001-DET-004

client: ASPIRE CONSORTIUM

central coast office ph: (02) 4305 4300  
hunter office ph: (02) 4978 5100  
sydney office ph: (02) 8046 7411

www.adwjohanson.com.au





- NOTES:-
- PLEASE REFER TO AS5488-2013-CLASSIFICATION OF SUBSURFACE UTILITY INFORMATION (SUI) FOR THE DEFINITION OF SERVICE LOCATION ACCURACIES SHOWN IN THIS PLAN.
  - ALL UNDERGROUND UTILITIES SHOWN ON THIS PLAN HAVE BEEN PLOTTED BY ESTIMATION BASED UPON SUPPLIED DBVD INFORMATION PLANS. ADDITIONAL SERVICES MAY EXIST THROUGHOUT THE SITE. TRUE LEVELS & POSITION WILL NEED TO BE VERIFIED BY POTHOLING BEFORE ANY CONSTRUCTION COMMENCES.
  - BOUNDARIES AND DIMENSIONS SHOWN ON THIS PLAN ARE BASED ON PRELIMINARY BOUNDARY DEFINITION ONLY. ANY FUTURE PLAN OF SURVEY OF ADJOINING LOTS REGISTERED MAY IMPACT THE SUBJECT BOUNDARIES. IT IS RECOMMENDED THAT A PLAN BE REGISTERED WITH THE LAND AND PROPERTY INFORMATION (LPI) PRIOR TO ANY DETAILED DESIGN OR CONSTRUCTION. ALL DIMENSIONS AND AREAS ARE SUBJECT TO FINAL SURVEY AND REGISTRATION OF A PLAN WITH LPI.
  - OTHER EASEMENTS AND ENCUMBRANCES EXIST WHICH HAVE NOT BEEN SHOWN ON THIS PLAN. NO EASEMENT OR ENCUMBRANCES HAVE BEEN INVESTIGATED OR SHOWN ON ADJOINING PROPERTIES.
  - SPOT LEVELS AND CONTOURS SHOWN HEREON ARE FOR DESIGN PURPOSES ONLY AND ARE TO BE CONFIRMED ON SITE PRIOR TO ANY EXCAVATION OR CONSTRUCTION.
  - THIS PLAN HAS BEEN PREPARED FOR THE PURPOSE OF DESIGN AND SHOULD NOT BE USED FOR ANYTHING OTHER THAN THAT PURPOSE.
  - SOME SPOT LEVELS HAVE BEEN REMOVED FROM THE FACE OF THIS PLAN FOR CLARITY. ADDITIONAL SPOT LEVELS CAN BE ACCESSED ON THE ELECTRONIC COPY OF THIS PLAN FOR MORE DETAILED DESIGN WORKS.
  - BACKGROUND SURVEY INFORMATION HAS BEEN SOURCED FROM CONTOUR & DETAIL PLAN FROM LAND AND HOUSING CORPORATIONS REF. 8907/001/01, DATED 03/2007.

SUBSURFACE UTILITY INVESTIGATION (SUI) QUALITY LEVEL LABELLING UTILITY INFORMATION BY A CLASSIFICATION CODE ALLOWS THE USER OF THIS INFORMATION TO UNDERSTAND CLEARLY HOW THE INFORMATION WAS COLLECTED AND THEN PLACE AN APPROPRIATE AMOUNT OF RELIANCE ON IT. PROJECT RISKS RELATED TO UNDERGROUND UTILITIES CAN THEN BE PROPERLY MANAGED.

QL - 'A': INFORMATION IS THE HIGHEST POSSIBLE LEVEL OF ACCURACY AND IS OBTAINED BY EXPOSING THE UNDERGROUND UTILITY USING A NON-DESTRUCTIVE EXCAVATION (POTHOLING) TECHNIQUE. THE VERTICAL INFORMATION FOR THIS LOCATING METHOD IS TO THE TOP OR SHALLOWEST PART OF THE LOCATED SERVICE. THE 3D LOCATION IS RECORDED BY SURVEY AS AN X, Y, Z COORDINATE.

QL - 'B': INFORMATION IS COLLECTED BY DESIGNATING THE HORIZONTAL AND VERTICAL LOCATION OF UNDERGROUND UTILITIES BY USING ELECTROMAGNETIC PIPE AND CABLE LOCATORS, SONDES OR FLEXI-TRACE EQUIPMENT. THIS IS THE MOST COMMON FORM OF UTILITY LOCATING AND ALTHOUGH AN X, Y AND Z AXIS CAN BE ESTABLISHED IT IS NOT ALWAYS ENTIRELY ACCURATE DUE TO DIFFERING ELECTROMAGNETIC FIELDS, SOIL CONDITIONS AND MULTIPLE BANKS OF CABLES AFFECTING THE LOCATING SIGNAL.

QL - 'C': INFORMATION IS COLLECTED BY CORRELATING THE SURVEY OF VISIBLE UTILITY SURFACE FEATURES SUCH AS MARKER PLATES OR WATER HYDRANTS AND ACQUIRED DIAL-BEFORE-YOU-DIG PLANS TO "DRAW" A STRING WHICH SHOWS THE APPROXIMATE POSITION OF SERVICES. THIS METHOD DOES NOT USUALLY SHOW MULTIPLE BANKS OF CABLES AND DOES NOT ALWAYS SHOW THREE DIMENSIONAL INFORMATION.

QL - 'D': INFORMATION IS THE MOST BASIC LEVEL OF UTILITY LOCATIONS USING ONLY INFORMATION BASED ON EXISTING DIAL-BEFORE-YOU-DIG PLANS AND BY MEASURING BOUNDARY OFFSETS AS WELL AS ASSISTANCE VIA GROUND PENETRATING RADAR ETC. THIS METHOD OF UTILITY LOCATIONS SHOULD ALWAYS BE TREATED AS AN INDICATION OF THE PRESENCE OF A SERVICE ONLY AND SHOULD NOT BE USED FOR DESIGN.

REFER TO LEGEND FOR QUALITY LEVEL CLASSIFICATIONS OF SERVICES. ALL UTILITIES ARE QL - 'D' UNLESS OTHERWISE NOTED

- (A) EASEMENT FOR DRAINAGE 2.5 WIDE & VARIABLE WIDTH (VIDE R507051)  
(B) RIGHT OF WAY & EASEMENT FOR ELECTRICITY PURPOSES 5.35 WIDE (VIDE 8712011)  
(C) LEASE TO AUSGRID SUBSTATION PREMISE No.7958 (VIDE 8712011)  
(C1) LEASE TO AUSGRID SUBSTATION PREMISE No.7959 (VIDE 8712011)  
(D) EASEMENT FOR SEWER PIPE LINE (VIDE M50338 & D.P.535722)  
(X) LAND EXCLUDES MINERALS - CROWN GRANT 5235A CROWN LAND CONSOLIDATION ACT, 1913

OTHER TITLE NOTIFICATIONS

- LOT 1 D.P.859537:
- IS SUBJECT TO NUMEROUS LEASES. THE CONSENT OF THE LESSEES WILL BE REQUIRED FOR ANY PROPOSED DEALINGS AFFECTING THE LAND.

- LOT 9 D.P.861433:
- IS SUBJECT TO ANY EASEMENTS, RESTRICTIVE COVENANTS AND PUBLIC RIGHTS OF WAY AFFECTING IT ON 2.2.1944 AS PRESERVED BY 5.604(2) LOCAL GOV. ACT, 1919;
  - IS AFFECTED BY COVENANT S142036.

ver.	date	comment	surveyed	drawn	checked	pm	co-ordinate information	level information	scale (A1 original size)	page
A	02.11.17	INITIAL ISSUE	DK/CG/PR	PB	CG	MO	CO-ORDINATE SYSTEM: MGA 56 GROUND ORIGIN OF CO-ORDINATES: P.M.50023 DATE OF SURVEY 05.07.17	DATUM: AHD ORIGIN OF LEVELS: P.M.50023 CONTOUR INTERVAL: 0.25m	 SCALE: 1:300 (FULL)	4 OF 9

WARNING  
UNDERGROUND  
ELECTRICITY LINES

WARNING  
UNDERGROUND  
OPTICAL FIBRE

drawing title:  
PLAN SHOWING DETAIL &  
CONTOURS OVER PART OF  
THE IVANHOE ESTATE  
REDEVELOPMENT SITE

location: HERRING & EPPING  
ROADS, MACQUAIRE  
PARK.

council: RYDE

dwg ref: 300001-DET-004

client:

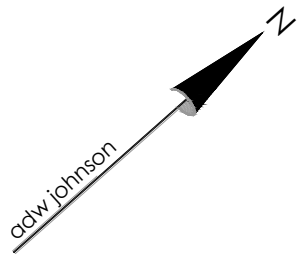
ASPIRE  
CONSORTIUM

central coast office ph: (02) 4305 4300  
hunter office ph: (02) 4978 5100  
sydney office ph: (02) 8046 7411

www.adwjohanson.com.au

adw  
johnson





PHOTOGRAPH 4

SUBSURFACE UTILITY INVESTIGATION (SUI) QUALITY LEVEL LABELLING UTILITY INFORMATION BY A CLASSIFICATION CODE ALLOWS THE USER OF THIS INFORMATION TO UNDERSTAND CLEARLY HOW THE INFORMATION WAS COLLECTED AND THEN PLACE AN APPROPRIATE AMOUNT OF RELIANCE ON IT. PROJECT RISKS RELATED TO UNDERGROUND UTILITIES CAN THEN BE PROPERLY MANAGED.

QL - 'A': INFORMATION IS THE HIGHEST POSSIBLE LEVEL OF ACCURACY AND IS OBTAINED BY EXPOSING THE UNDERGROUND UTILITY USING A NON-DESTRUCTIVE EXCAVATION (POTHOLING) TECHNIQUE. THE VERTICAL INFORMATION FOR THIS LOCATING METHOD IS TO THE TOP OR SHALLOWEST PART OF THE LOCATED SERVICE. THE 3D LOCATION IS RECORDED BY SURVEY AS AN X, Y, Z COORDINATE.

QL - 'B': INFORMATION IS COLLECTED BY DESIGNATING THE HORIZONTAL AND VERTICAL LOCATION OF UNDERGROUND UTILITIES BY USING ELECTROMAGNETIC PIPE AND CABLE LOCATORS, SONDES OR FLEXI-TRACE EQUIPMENT. THIS IS THE MOST COMMON FORM OF UTILITY LOCATING AND ALTHOUGH AN X, Y AND Z AXIS CAN BE ESTABLISHED IT IS NOT ALWAYS ENTIRELY ACCURATE DUE TO DIFFERING ELECTROMAGNETIC FIELDS, SOIL CONDITIONS AND MULTIPLE BANKS OF CABLES AFFECTING THE LOCATING SIGNAL.

QL - 'C': INFORMATION IS COLLECTED BY CORRELATING THE SURVEY OF VISIBLE UTILITY SURFACE FEATURES SUCH AS MARKER PLATES OR WATER HYDRANTS AND ACQUIRED DIAL-BEFORE-YOU-DIG PLANS TO "DRAW" A STRING WHICH SHOWS THE APPROXIMATE POSITION OF SERVICES. THIS METHOD DOES NOT USUALLY SHOW MULTIPLE BANKS OF CABLES AND DOES NOT ALWAYS SHOW THREE DIMENSIONAL INFORMATION.

QL - 'D': INFORMATION IS THE MOST BASIC LEVEL OF UTILITY LOCATIONS USING ONLY INFORMATION BASED ON EXISTING DIAL-BEFORE-YOU-DIG PLANS AND BY MEASURING BOUNDARY OFFSETS AS WELL AS ASSISTANCE VIA GROUND PENETRATING RADAR ETC. THIS METHOD OF UTILITY LOCATIONS SHOULD ALWAYS BE TREATED AS AN INDICATION OF THE PRESENCE OF A SERVICE ONLY AND SHOULD NOT BE USED FOR DESIGN.

REFER TO LEGEND FOR QUALITY LEVEL CLASSIFICATIONS OF SERVICES.  
ALL UTILITIES ARE QL - 'D' UNLESS OTHERWISE NOTED

NOTES:-

- PLEASE REFER TO AS5488-2013 CLASSIFICATION OF SUBSURFACE UTILITY INFORMATION (SUI) FOR THE DEFINITION OF SERVICE LOCATION ACCURACIES SHOWN IN THIS PLAN.
- ALL UNDERGROUND UTILITIES SHOWN ON THIS PLAN HAVE BEEN PLOTTED BY ESTIMATION BASED UPON SUPPLIED DBYD INFORMATION PLANS. ADDITIONAL SERVICES MAY EXIST THROUGHOUT THE SITE. TRUE LEVELS & POSITION WILL NEED TO BE VERIFIED BY POTHOLES BEFORE ANY CONSTRUCTION COMMENCES.
- BOUNDARIES AND DIMENSIONS SHOWN ON THIS PLAN ARE BASED ON PRELIMINARY BOUNDARY DEFINITION ONLY. ANY FUTURE PLAN OF SURVEY OF ADJOINING LOTS REGISTERED MAY IMPACT THE SUBJECT BOUNDARIES. IT IS RECOMMENDED THAT A PLAN BE REGISTERED WITH THE LAND AND PROPERTY INFORMATION (LPI) PRIOR TO ANY DETAILED DESIGN OR CONSTRUCTION. ALL DIMENSIONS AND AREAS ARE SUBJECT TO FINAL SURVEY AND REGISTRATION OF A PLAN WITH LPI.
- OTHER EASEMENTS AND ENCUMBRANCES EXIST WHICH HAVE NOT BEEN SHOWN ON THIS PLAN. NO EASEMENT OR ENCUMBRANCES HAVE BEEN INVESTIGATED OR SHOWN ON ADJOINING PROPERTIES.
- SPOT LEVELS AND CONTOURS SHOWN HEREON ARE FOR DESIGN PURPOSES ONLY AND ARE TO BE CONFIRMED ON SITE PRIOR TO ANY EXCAVATION OR CONSTRUCTION.
- THIS PLAN HAS BEEN PREPARED FOR THE PURPOSE OF DESIGN AND SHOULD NOT BE USED FOR ANYTHING OTHER THAN THAT PURPOSE.
- SOME SPOT LEVELS HAVE BEEN REMOVED FROM THE FACE OF THIS PLAN FOR CLARITY. ADDITIONAL SPOT LEVELS CAN BE ACCESSED ON THE ELECTRONIC COPY OF THIS PLAN FOR MORE DETAILED DESIGN WORKS.
- BACKGROUND SURVEY INFORMATION HAS BEEN SOURCED FROM CONTOUR & DETAIL PLAN FROM LAND AND HOUSING CORPORATIONS REF. 8907/001/01, DATED 03/2007.

LEGEND

- PHOTOGRAPH DIRECTION
- C COLUMN
- P PARKING METER
- B BOLLARD
- SI SIGN
- TREE
- PP POWER POLE
- EP ELECTRICAL PILLAR
- SL STREET LIGHT
- HYD HYDRANT
- SV STOP VALVE
- WM WATER METER
- KIP - KERB INLET PIT
- SIP - SURFACE INLET PIT
- SMH SEWER MAN HOLE
- TEL TELSTRA/COMMS PIT
- GA GAS METER
- MK GAS MARKER
- FENCE LINE
- UNDERGROUND SEWER (QL C)
- UNDERGROUND SEWER (QL D)
- UNDERGROUND ELECTRICITY (QL D)
- UNDERGROUND GAS MAIN (QL D)
- UNDERGROUND COMMS (QL D)
- UNDERGROUND WATER MAIN (QL D)
- UNDERGROUND STORMWATER PIPE (QL A)
- UNDERGROUND STORMWATER PIPE (QL D)
- MINOR CONTOUR LINE
- MAJOR CONTOUR LINE
- OVERALL SITE EXTENTS
- BOUNDARY LINE
- TOP & TOE OF BANKS

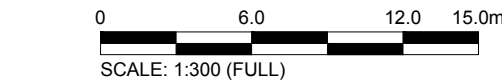
WARNING  
UNDERGROUND  
ELECTRICITY LINES

WARNING  
UNDERGROUND  
OPTICAL FIBRE

- (A) EASEMENT FOR DRAINAGE 2.5 WIDE & VARIABLE WIDTH (VIDE R507051)
- (B) RIGHT OF WAY & EASEMENT FOR ELECTRICITY PURPOSES 5.35 WIDE (VIDE 8712011)
- (C) LEASE TO AUSGRID SUBSTATION PREMISE No.7958 (VIDE 8712011)
- (C1) LEASE TO AUSGRID SUBSTATION PREMISE No.7959 (VIDE 8712011)
- (D) EASEMENT FOR SEWER PIPE LINE (VIDE M50338 & D.P.535722)
- (X) LAND EXCLUDES MINERALS - CROWN GRANT S235A CROWN LAND CONSOLIDATION ACT, 1913

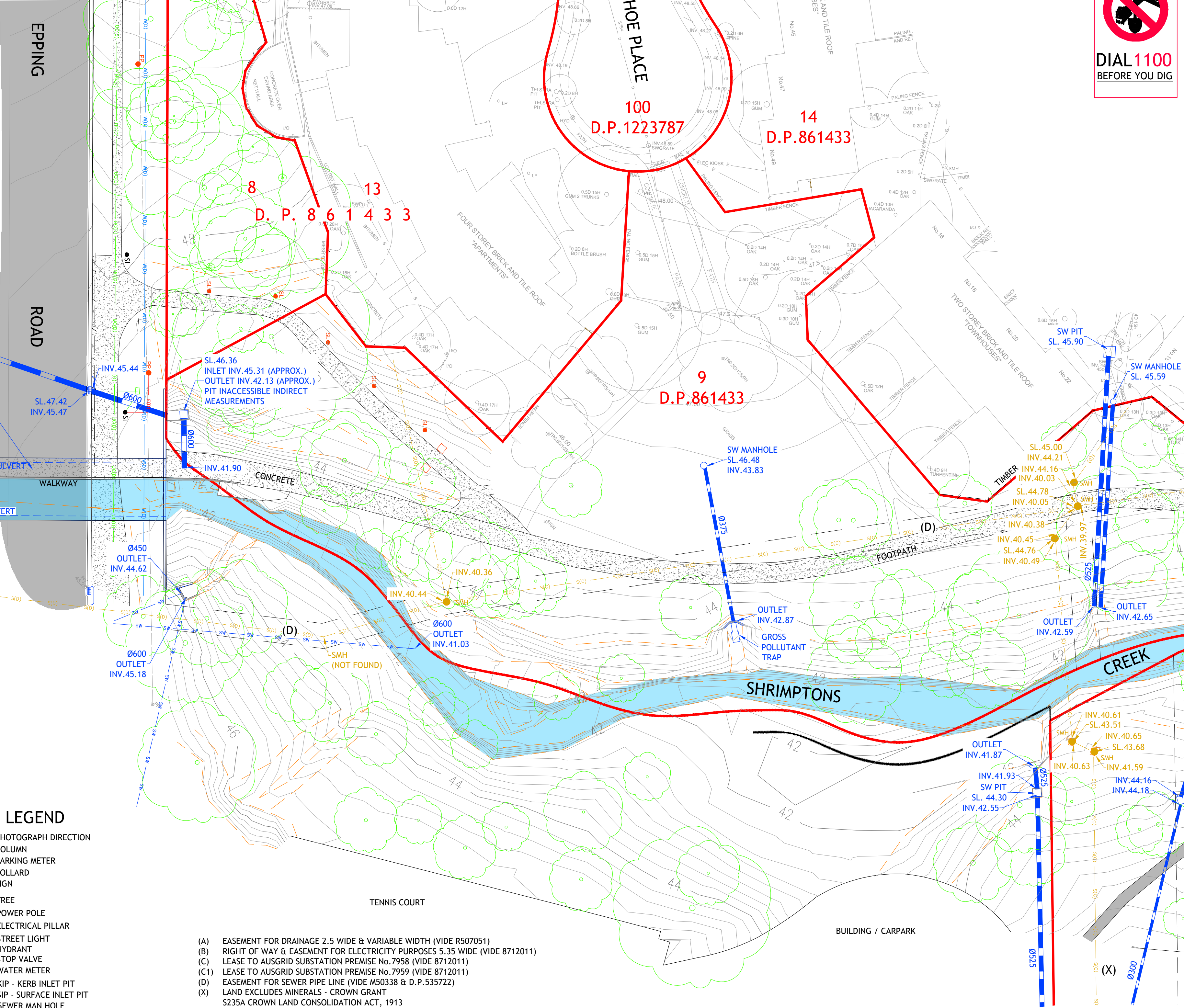
OTHER TITLE NOTIFICATIONS

- LOT 1 D.P.859537:
  - IS SUBJECT TO NUMEROUS LEASES. THE CONSENT OF THE LESSEES WILL BE REQUIRED FOR ANY PROPOSED DEALINGS AFFECTING THE LAND.
- LOT 8 AND 9 D.P.861433:
  - ARE SUBJECT TO ANY EASEMENTS, RESTRICTIVE COVENANTS AND PUBLIC RIGHTS OF WAY AFFECTING IT ON 2.2.1944 AS PRESERVED BY S.604(2) LOCAL GOV. ACT, 1919;
  - ARE AFFECTED BY COVENANT S142036.



ver.	date	comment	surveyed	drawn	checked	pm	co-ordinate information	level information	scale (A1 original size)	page
A	02.11.17	INITIAL ISSUE	DK/CG/PR	PB	CG	MO	CO-ORDINATE SYSTEM: MGA 56 GROUND ORIGIN OF CO-ORDINATES: P.M.50023 DATE OF SURVEY: 05.07.17	DATUM: AHD ORIGIN OF LEVELS: P.M.50023 CONTOUR INTERVAL: 0.25m	0 6.0 12.0 15.0m SCALE: 1:300 (FULL)	5 OF 9

• project management • civil engineering • infrastructure • superintendency • economic analysis • social impact • town planning • surveying • development feasibility • visualisation • urban design



1  
D.P.880284  
No.123 EPPING ROAD

- (A) EASEMENT FOR DRAINAGE 2.5 WIDE & VARIABLE WIDTH (VIDE R507051)
- (B) RIGHT OF WAY & EASEMENT FOR ELECTRICITY PURPOSES 5.35 WIDE (VIDE 8712011)
- (C) LEASE TO AUSGRID SUBSTATION PREMISE No.7958 (VIDE 8712011)
- (C1) LEASE TO AUSGRID SUBSTATION PREMISE No.7959 (VIDE 8712011)
- (D) EASEMENT FOR SEWER PIPE LINE (VIDE M50338 & D.P.535722)
- (X) LAND EXCLUDES MINERALS - CROWN GRANT S235A CROWN LAND CONSOLIDATION ACT, 1913

OTHER TITLE NOTIFICATIONS

- LOT 1 D.P.859537:
  - IS SUBJECT TO NUMEROUS LEASES. THE CONSENT OF THE LESSEES WILL BE REQUIRED FOR ANY PROPOSED DEALINGS AFFECTING THE LAND.
- LOT 8 AND 9 D.P.861433:
  - ARE SUBJECT TO ANY EASEMENTS, RESTRICTIVE COVENANTS AND PUBLIC RIGHTS OF WAY AFFECTING IT ON 2.2.1944 AS PRESERVED BY S.604(2) LOCAL GOV. ACT, 1919;
  - ARE AFFECTED BY COVENANT S142036.

drawing title:  
PLAN SHOWING DETAIL &  
CONTOURS OVER PART OF  
THE IVANHOE ESTATE  
REDEVELOPMENT SITE

location:  
HERRING & EPPING  
ROADS, MACQUAIRE  
PARK.

council: RYDE

dwg ref: 300001-DET-004

client:

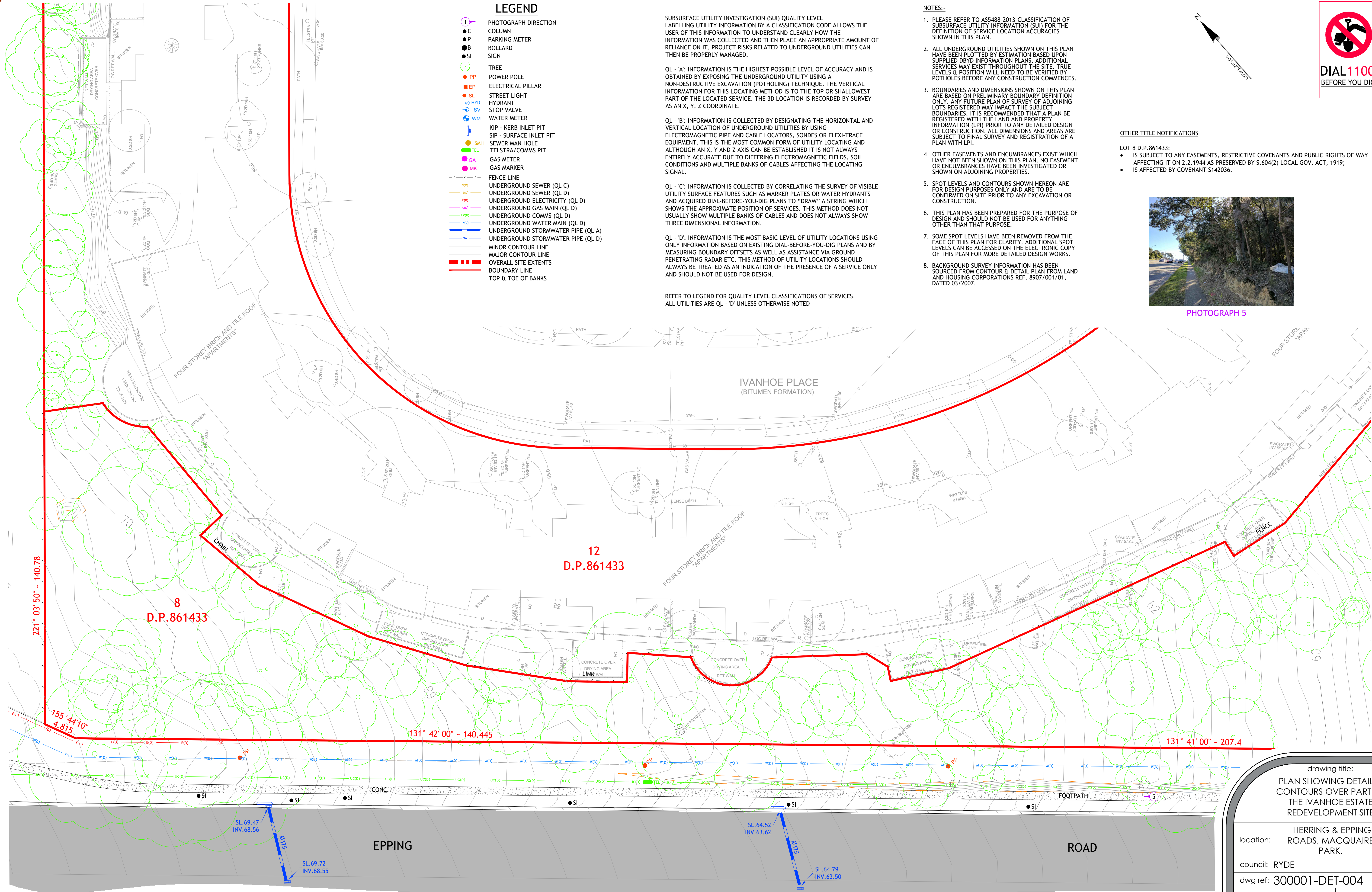
ASPIRE  
CONSORTIUM

central coast office ph: (02) 4305 4300  
hunter office ph: (02) 4978 5100  
sydney office ph: (02) 8046 7411

www.adwjohanson.com.au







LEGEND

- 1 PHOTOGRAPH DIRECTION
- C COLUMN
- P PARKING METER
- B BOLLARD
- SI SIGN
- TREE
- PP POWER POLE
- EP ELECTRICAL PILLAR
- SL STREET LIGHT
- HYD HYDRANT
- SV STOP VALVE
- WM WATER METER
- KIP KIP - KERB INLET PIT
- SIP - SURFACE INLET PIT
- SMH SEWER MAN HOLE
- TEL TELSTRAS/COMMS PIT
- GA GAS METER
- MK GAS MARKER
- FENCE LINE
- UNDERGROUND SEWER (QL C)
- UNDERGROUND SEWER (QL D)
- UNDERGROUND ELECTRICITY (QL D)
- UNDERGROUND GAS MAIN (QL D)
- UNDERGROUND COMMS (QL D)
- UNDERGROUND WATER MAIN (QL D)
- UNDERGROUND STORMWATER PIPE (QL A)
- UNDERGROUND STORMWATER PIPE (QL D)
- MINOR CONTOUR LINE
- MAJOR CONTOUR LINE
- OVERALL SITE EXTENTS
- BOUNDARY LINE
- TOP & TOE OF BANKS

SUBSURFACE UTILITY INVESTIGATION (SUI) QUALITY LEVEL LABELLING UTILITY INFORMATION BY A CLASSIFICATION CODE ALLOWS THE USER OF THIS INFORMATION TO UNDERSTAND CLEARLY HOW THE INFORMATION WAS COLLECTED AND THEN PLACE AN APPROPRIATE AMOUNT OF RELIANCE ON IT. PROJECT RISKS RELATED TO UNDERGROUND UTILITIES CAN THEN BE PROPERLY MANAGED.

QL - 'A': INFORMATION IS THE HIGHEST POSSIBLE LEVEL OF ACCURACY AND IS OBTAINED BY EXPOSING THE UNDERGROUND UTILITY USING A NON-DESTRUCTIVE EXCAVATION (POTHOLING) TECHNIQUE. THE VERTICAL INFORMATION FOR THIS LOCATING METHOD IS TO THE TOP OR SHALLOWEST PART OF THE LOCATED SERVICE. THE 3D LOCATION IS RECORDED BY SURVEY AS AN X, Y, Z COORDINATE.

QL - 'B': INFORMATION IS COLLECTED BY DESIGNATING THE HORIZONTAL AND VERTICAL LOCATION OF UNDERGROUND UTILITIES BY USING ELECTROMAGNETIC PIPE AND CABLE LOCATORS, SONDES OR FLEXI-TRACE EQUIPMENT. THIS IS THE MOST COMMON FORM OF UTILITY LOCATING AND ALTHOUGH AN X, Y AND Z AXIS CAN BE ESTABLISHED IT IS NOT ALWAYS ENTIRELY ACCURATE DUE TO DIFFERING ELECTROMAGNETIC FIELDS, SOIL CONDITIONS AND MULTIPLE BANKS OF CABLES AFFECTING THE LOCATING SIGNAL.

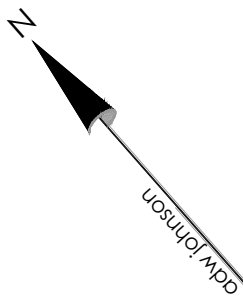
QL - 'C': INFORMATION IS COLLECTED BY CORRELATING THE SURVEY OF VISIBLE UTILITY SURFACE FEATURES SUCH AS MARKER PLATES OR WATER HYDRANTS AND ACQUIRED DIAL-BEFORE-YOU-DIG PLANS TO "DRAW" A STRING WHICH SHOWS THE APPROXIMATE POSITION OF SERVICES. THIS METHOD DOES NOT USUALLY SHOW MULTIPLE BANKS OF CABLES AND DOES NOT ALWAYS SHOW THREE DIMENSIONAL INFORMATION.

QL - 'D': INFORMATION IS THE MOST BASIC LEVEL OF UTILITY LOCATIONS USING ONLY INFORMATION BASED ON EXISTING DIAL-BEFORE-YOU-DIG PLANS AND BY MEASURING BOUNDARY OFFSETS AS WELL AS ASSISTANCE VIA GROUND PENETRATING RADAR ETC. THIS METHOD OF UTILITY LOCATIONS SHOULD ALWAYS BE TREATED AS AN INDICATION OF THE PRESENCE OF A SERVICE ONLY AND SHOULD NOT BE USED FOR DESIGN.

REFER TO LEGEND FOR QUALITY LEVEL CLASSIFICATIONS OF SERVICES.  
ALL UTILITIES ARE QL - 'D' UNLESS OTHERWISE NOTED

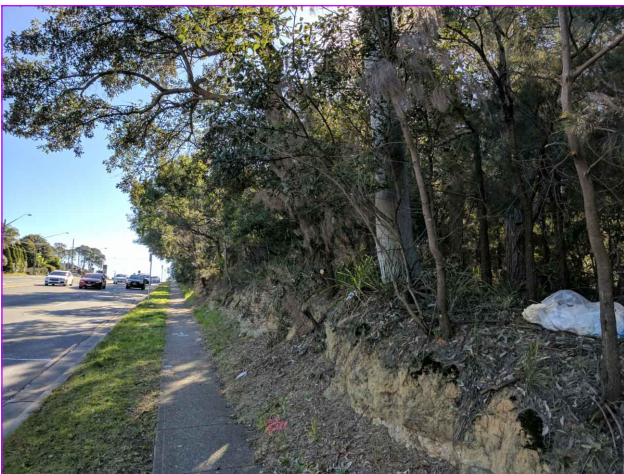
NOTES:-

- PLEASE REFER TO AS5488-2013-CLASSIFICATION OF SUBSURFACE UTILITY INFORMATION (SUI) FOR THE DEFINITION OF SERVICE LOCATION ACCURACIES SHOWN IN THIS PLAN.
- ALL UNDERGROUND UTILITIES SHOWN ON THIS PLAN HAVE BEEN PLOTTED BY ESTIMATION BASED UPON SUPPLIED DBVD INFORMATION PLANS. ADDITIONAL SERVICES MAY EXIST THROUGHOUT THE SITE. TRUE LEVELS & POSITION WILL NEED TO BE VERIFIED BY POTHOLING BEFORE ANY CONSTRUCTION COMMENCES.
- BOUNDARIES AND DIMENSIONS SHOWN ON THIS PLAN ARE BASED ON PRELIMINARY BOUNDARY DEFINITION ONLY. ANY FUTURE PLAN OF SURVEY OF ADJOINING LOTS REGISTERED MAY IMPACT THE SUBJECT BOUNDARIES. IT IS RECOMMENDED THAT A PLAN BE REGISTERED WITH THE LAND AND PROPERTY INFORMATION (LPI) PRIOR TO ANY DETAILED DESIGN OR CONSTRUCTION. ALL DIMENSIONS AND AREAS ARE SUBJECT TO FINAL SURVEY AND REGISTRATION OF A PLAN WITH LPI.
- OTHER EASEMENTS AND ENCUMBRANCES EXIST WHICH HAVE NOT BEEN SHOWN ON THIS PLAN. NO EASEMENT OR ENCUMBRANCES HAVE BEEN INVESTIGATED OR SHOWN ON ADJOINING PROPERTIES.
- SPOT LEVELS AND CONTOURS SHOWN HEREON ARE FOR DESIGN PURPOSES ONLY AND ARE TO BE CONFIRMED ON SITE PRIOR TO ANY EXCAVATION OR CONSTRUCTION.
- THIS PLAN HAS BEEN PREPARED FOR THE PURPOSE OF DESIGN AND SHOULD NOT BE USED FOR ANYTHING OTHER THAN THAT PURPOSE.
- SOME SPOT LEVELS HAVE BEEN REMOVED FROM THE FACE OF THIS PLAN FOR CLARITY. ADDITIONAL SPOT LEVELS CAN BE ACCESSED ON THE ELECTRONIC COPY OF THIS PLAN FOR MORE DETAILED DESIGN WORKS.
- BACKGROUND SURVEY INFORMATION HAS BEEN SOURCED FROM CONTOUR & DETAIL PLAN FROM LAND AND HOUSING CORPORATIONS REF. 8907/001/01, DATED 03/2007.



OTHER TITLE NOTIFICATIONS

- LOT 8 D.P.861433:
- IS SUBJECT TO ANY EASEMENTS, RESTRICTIVE COVENANTS AND PUBLIC RIGHTS OF WAY AFFECTING IT ON 2.2.1944 AS PRESERVED BY S.60(2) LOCAL GOV. ACT, 1919;
  - IS AFFECTED BY COVENANT S142036.



PHOTOGRAPH 5

ver.	date	comment	surveyed	drawn	checked	pm	co-ordinate information	level information	scale (A1 original size)	page
A	02.11.17	INITIAL ISSUE	DK/CG/PR	PB	CG	MO	CO-ORDINATE SYSTEM: MGA 56 GROUND ORIGIN OF CO-ORDINATES: P.M.50023 DATE OF SURVEY 05.07.17	DATUM: AHD ORIGIN OF LEVELS: P.M.50023 CONTOUR INTERVAL: 0.25m	0 5.0 10.0 12.5m SCALE: 1:250 (FULL)	6 OF 9

WARNING  
UNDERGROUND  
ELECTRICITY LINES

WARNING  
UNDERGROUND  
OPTICAL FIBRE

drawing title:  
PLAN SHOWING DETAIL &  
CONTOURS OVER PART OF  
THE IVANHOE ESTATE  
REDEVELOPMENT SITE

location: HERRING & EPPING  
ROADS, MACQUAIRE  
PARK.

council: RYDE

dwg ref: 300001-DET-004

client:

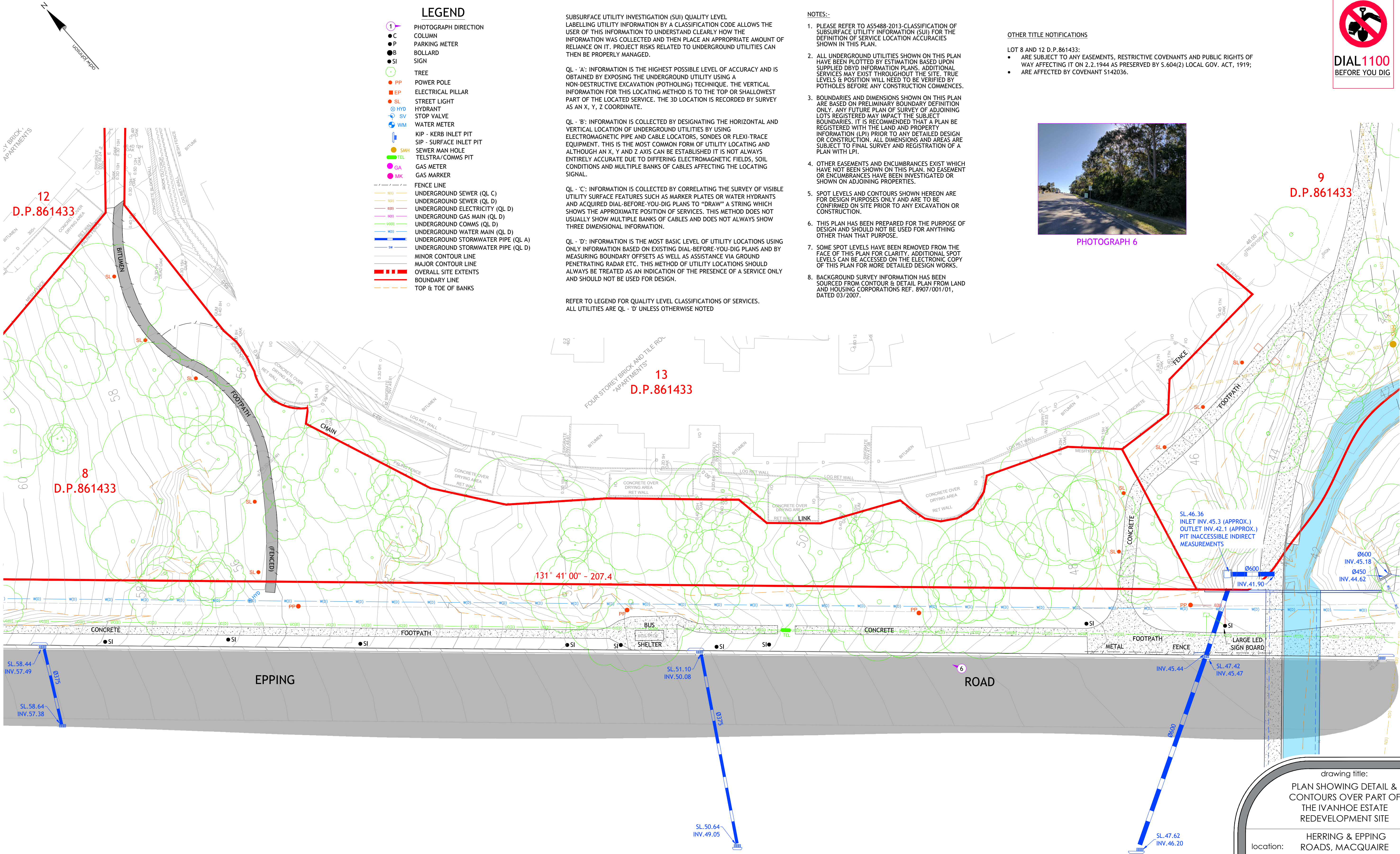
ASPIRE  
CONSORTIUM



central coast office ph: (02) 4305 4300  
hunter office ph: (02) 4978 5100  
sydney office ph: (02) 8046 7411

www.adwjohanson.com.au





LEGEND

- 1 PHOTOGRAPH DIRECTION
- C COLUMN
- P PARKING METER
- B BOLLARD
- SI SIGN
- TREE
- PP POWER POLE
- EP ELECTRICAL PILLAR
- SL STREET LIGHT
- HYD HYDRANT
- SV STOP VALVE
- WM WATER METER
- KIP - KERB INLET PIT
- SIP - SURFACE INLET PIT
- SMH SEWER MAN HOLE
- TEL TELSTRA/COMMS PIT
- GA GAS METER
- MK GAS MARKER
- FENCE LINE
- UNDERGROUND SEWER (QL C)
- UNDERGROUND SEWER (QL D)
- UNDERGROUND ELECTRICITY (QL D)
- UNDERGROUND GAS MAIN (QL D)
- UNDERGROUND COMMS (QL D)
- UNDERGROUND WATER MAIN (QL D)
- UNDERGROUND STORMWATER PIPE (QL A)
- UNDERGROUND STORMWATER PIPE (QL D)
- MINOR CONTOUR LINE
- MAJOR CONTOUR LINE
- OVERALL SITE EXTENTS
- BOUNDARY LINE
- TOP & TOE OF BANKS

SUBSURFACE UTILITY INVESTIGATION (SUI) QUALITY LEVEL LABELLING UTILITY INFORMATION BY A CLASSIFICATION CODE ALLOWS THE USER OF THIS INFORMATION TO UNDERSTAND CLEARLY HOW THE INFORMATION WAS COLLECTED AND THEN PLACE AN APPROPRIATE AMOUNT OF RELIANCE ON IT. PROJECT RISKS RELATED TO UNDERGROUND UTILITIES CAN THEN BE PROPERLY MANAGED.

QL - 'A': INFORMATION IS THE HIGHEST POSSIBLE LEVEL OF ACCURACY AND IS OBTAINED BY EXPOSING THE UNDERGROUND UTILITY USING A NON-DESTRUCTIVE EXCAVATION (POTHOLING) TECHNIQUE. THE VERTICAL INFORMATION FOR THIS LOCATING METHOD IS TO THE TOP OR SHALLOWEST PART OF THE LOCATED SERVICE. THE 3D LOCATION IS RECORDED BY SURVEY AS AN X, Y, Z COORDINATE.

QL - 'B': INFORMATION IS COLLECTED BY DESIGNATING THE HORIZONTAL AND VERTICAL LOCATION OF UNDERGROUND UTILITIES BY USING ELECTROMAGNETIC PIPE AND CABLE LOCATORS, SONDES OR FLEXI-TRACE EQUIPMENT. THIS IS THE MOST COMMON FORM OF UTILITY LOCATING AND ALTHOUGH AN X, Y AND Z AXIS CAN BE ESTABLISHED IT IS NOT ALWAYS ENTIRELY ACCURATE DUE TO DIFFERING ELECTROMAGNETIC FIELDS, SOIL CONDITIONS AND MULTIPLE BANKS OF CABLES AFFECTING THE LOCATING SIGNAL.

QL - 'C': INFORMATION IS COLLECTED BY CORRELATING THE SURVEY OF VISIBLE UTILITY SURFACE FEATURES SUCH AS MARKER PLATES OR WATER HYDRANTS AND ACQUIRED DIAL-BEFORE-YOU-DIG PLANS TO "DRAW" A STRING WHICH SHOWS THE APPROXIMATE POSITION OF SERVICES. THIS METHOD DOES NOT USUALLY SHOW MULTIPLE BANKS OF CABLES AND DOES NOT ALWAYS SHOW THREE DIMENSIONAL INFORMATION.

QL - 'D': INFORMATION IS THE MOST BASIC LEVEL OF UTILITY LOCATIONS USING ONLY INFORMATION BASED ON EXISTING DIAL-BEFORE-YOU-DIG PLANS AND BY MEASURING BOUNDARY OFFSETS AS WELL AS ASSISTANCE VIA GROUND PENETRATING RADAR ETC. THIS METHOD OF UTILITY LOCATIONS SHOULD ALWAYS BE TREATED AS AN INDICATION OF THE PRESENCE OF A SERVICE ONLY AND SHOULD NOT BE USED FOR DESIGN.

REFER TO LEGEND FOR QUALITY LEVEL CLASSIFICATIONS OF SERVICES.  
ALL UTILITIES ARE QL - 'D' UNLESS OTHERWISE NOTED

NOTES:-

- PLEASE REFER TO ASS488-2013-CLASSIFICATION OF SUBSURFACE UTILITY INFORMATION (SUI) FOR THE DEFINITION OF SERVICE LOCATION ACCURACIES SHOWN IN THIS PLAN.
- ALL UNDERGROUND UTILITIES SHOWN ON THIS PLAN HAVE BEEN PLOTTED BY ESTIMATION BASED UPON SUPPLIED DBYD INFORMATION PLANS. ADDITIONAL SERVICES MAY EXIST THROUGHOUT THE SITE. TRUE LEVELS & POSITION WILL NEED TO BE VERIFIED BY POTHOLES BEFORE ANY CONSTRUCTION COMMENCES.
- BOUNDARIES AND DIMENSIONS SHOWN ON THIS PLAN ARE BASED ON PRELIMINARY BOUNDARY DEFINITION ONLY. ANY FUTURE PLAN OF SURVEY OF ADJOINING LOTS REGISTERED MAY IMPACT THE SUBJECT BOUNDARIES. IT IS RECOMMENDED THAT A PLAN BE REGISTERED WITH THE LAND AND PROPERTY INFORMATION (LPI) PRIOR TO ANY DETAILED DESIGN OR CONSTRUCTION. ALL DIMENSIONS AND AREAS ARE SUBJECT TO FINAL SURVEY AND REGISTRATION OF A PLAN WITH LPI.
- OTHER EASEMENTS AND ENCUMBRANCES EXIST WHICH HAVE NOT BEEN SHOWN ON THIS PLAN. NO EASEMENT OR ENCUMBRANCES HAVE BEEN INVESTIGATED OR SHOWN ON ADJOINING PROPERTIES.
- SPOT LEVELS AND CONTOURS SHOWN HEREON ARE FOR DESIGN PURPOSES ONLY AND ARE TO BE CONFIRMED ON SITE PRIOR TO ANY EXCAVATION OR CONSTRUCTION.
- THIS PLAN HAS BEEN PREPARED FOR THE PURPOSE OF DESIGN AND SHOULD NOT BE USED FOR ANYTHING OTHER THAN THAT PURPOSE.
- SOME SPOT LEVELS HAVE BEEN REMOVED FROM THE FACE OF THIS PLAN FOR CLARITY. ADDITIONAL SPOT LEVELS CAN BE ACCESSED ON THE ELECTRONIC COPY OF THIS PLAN FOR MORE DETAILED DESIGN WORKS.
- BACKGROUND SURVEY INFORMATION HAS BEEN SOURCED FROM CONTOUR & DETAIL PLAN FROM LAND AND HOUSING CORPORATIONS REF. 8907/001/01, DATED 03/2007.

OTHER TITLE NOTIFICATIONS

- LOT 8 AND 12 D.P.861433:
- ARE SUBJECT TO ANY EASEMENTS, RESTRICTIVE COVENANTS AND PUBLIC RIGHTS OF WAY AFFECTING IT ON 2.2.1944 AS PRESERVED BY S.604(2) LOCAL GOV. ACT, 1919;
  - ARE AFFECTED BY COVENANT 5142036.



PHOTOGRAPH 6



ver.	date	comment	surveyed	drawn	checked	pm	co-ordinate information	level information	scale (A1 original size)	page
A	02.11.17	INITIAL ISSUE	DK/CG/PR	PB	CG	MO	CO-ORDINATE SYSTEM: MGA 56 GROUND ORIGIN OF CO-ORDINATES: P.M.50023 DATE OF SURVEY 05.07.17	DATUM: AHD ORIGIN OF LEVELS: P.M.50023 CONTOUR INTERVAL: 0.25m	0 5.0 10.0 12.5m SCALE: 1:250 (FULL)	7 OF 9

WARNING  
UNDERGROUND  
ELECTRICITY LINES

WARNING  
UNDERGROUND  
OPTICAL FIBRE

drawing title:  
PLAN SHOWING DETAIL &  
CONTOURS OVER PART OF  
THE IVANHOE ESTATE  
REDEVELOPMENT SITE

location: HERRING & EPPING  
ROADS, MACQUAIRE  
PARK.

council: RYDE

dwg ref: 300001-DET-004

client:

ASPIRE  
CONSORTIUM



central coast office ph: (02) 4305 4300  
hunter office ph: (02) 4978 5100  
sydney office ph: (02) 8046 7411

www.adwjohanson.com.au





PHOTOGRAPH 7

**WARNING**  
UNDERGROUND  
ELECTRICITY LINES

**WARNING**  
UNDERGROUND  
OPTICAL FIBRE

- (E) EASEMENT TO DRAIN WATER 2 WIDE (D.P. 861433)  
(F) EASEMENT TO DRAIN WATER VARIABLE WIDTH (D.P. 861433)  
(G) EASEMENT TO DRAIN WATER 1.895 WIDE (D.P. 861433)  
(H) EASEMENT TO DRAIN WATER 2 WIDE AND VARIABLE WIDTH (D.P. 861433)

OTHER TITLE NOTIFICATIONS

- LOT 12 D.P.861433:  
• IS SUBJECT TO ANY EASEMENTS, RESTRICTIVE COVENANTS AND PUBLIC RIGHTS OF WAY AFFECTING IT ON 2.2.1944 AS PRESERVED BY S.604(2) LOCAL GOV. ACT, 1919;  
LOT 10, 11, 12 & 17 D.P.861433 & LOT 10 D.P.1223787:  
• ARE AFFECTED BY COVENANT S142036.

LEGEND

- 1 PHOTOGRAPH DIRECTION  
● C COLUMN  
● P PARKING METER  
● B BOLLARD  
● SI SIGN  
● TREE  
● PP POWER POLE  
● EP ELECTRICAL PILLAR  
● SL STREET LIGHT  
● HYD HYDRANT  
● SV STOP VALVE  
● WM WATER METER  
● KIP - KERB INLET PIT  
● SIP - SURFACE INLET PIT  
● SMH SEWER MAN HOLE  
● TEL TELSTRA/COMMS PIT  
● GA GAS METER  
● MK GAS MARKER  
--- FENCE LINE  
--- UNDERGROUND SEWER (QL C)  
--- UNDERGROUND SEWER (QL D)  
--- UNDERGROUND ELECTRICITY (QL D)  
--- UNDERGROUND GAS MAIN (QL D)  
--- UNDERGROUND COMMS (QL D)  
--- UNDERGROUND WATER MAIN (QL D)  
--- UNDERGROUND STORMWATER PIPE (QL A)  
--- UNDERGROUND STORMWATER PIPE (QL D)  
--- MINOR CONTOUR LINE  
--- MAJOR CONTOUR LINE  
--- OVERALL SITE EXTENTS  
--- BOUNDARY LINE  
--- TOP & TOE OF BANKS

ver.	date	comment	surveyed	drawn	checked	pm	co-ordinate information	level information	scale (A1 original size)	page
A	02.11.17	INITIAL ISSUE	DK/CG/PR	PB	CG	MO	CO-ORDINATE SYSTEM: MGA 56 GROUND ORIGIN OF CO-ORDINATES: P.M.50023 DATE OF SURVEY: 05.07.17	DATUM: AHD ORIGIN OF LEVELS: P.M.50023 CONTOUR INTERVAL: 0.25m	0 5.0 10.0 12.5m SCALE: 1:250 (FULL)	8 OF 9

• project management • civil engineering • infrastructure • superintendency • economic analysis • social impact • town planning • surveying • development feasibility • visualisation • urban design

REFER TO LEGEND FOR QUALITY LEVEL CLASSIFICATIONS OF SERVICES.  
ALL UTILITIES ARE QL - 'D' UNLESS OTHERWISE NOTED

drawing title:  
PLAN SHOWING DETAIL &  
CONTOURS OVER PART OF  
THE IVANHOE ESTATE  
REDEVELOPMENT SITE

location:  
HERRING & EPPING  
ROADS, MACQUAIRE  
PARK.

council: RYDE

dwg ref: 300001-DET-004

client:

ASPIRE  
CONSORTIUM

central coast office ph: (02) 4305 4300  
hunter office ph: (02) 4978 5100  
sydney office ph: (02) 8046 7411

www.adwjohanson.com.au



PARAPET RL 66.33

SP7111

NOTES:-

- PLEASE REFER TO AS5488-2013-CLASSIFICATION OF SUBSURFACE UTILITY INFORMATION (SUI) FOR THE DEFINITION OF SERVICE LOCATION ACCURACIES SHOWN IN THIS PLAN.
- ALL UNDERGROUND UTILITIES SHOWN ON THIS PLAN HAVE BEEN PLOTTED BY ESTIMATION BASED UPON SUPPLIED DBYD INFORMATION PLANS. ADDITIONAL SERVICES MAY EXIST THROUGHOUT THE SITE. TRUE LEVELS & POSITION WILL NEED TO BE VERIFIED BY POTHLES BEFORE ANY CONSTRUCTION COMMENCES.
- BOUNDARIES AND DIMENSIONS SHOWN ON THIS PLAN ARE BASED ON PRELIMINARY BOUNDARY DEFINITION ONLY. ANY FUTURE PLAN OF SURVEY OF ADJOINING LOTS REGISTERED MAY IMPACT THE SUBJECT BOUNDARIES. IT IS RECOMMENDED THAT A PLAN BE REGISTERED WITH THE LAND AND PROPERTY INFORMATION (LPI) PRIOR TO ANY DETAILED DESIGN OR CONSTRUCTION. ALL DIMENSIONS AND AREAS ARE SUBJECT TO FINAL SURVEY AND REGISTRATION OF A PLAN WITH LPI.
- OTHER EASEMENTS AND ENCUMBRANCES EXIST WHICH HAVE NOT BEEN SHOWN ON THIS PLAN. NO EASEMENT OR ENCUMBRANCES HAVE BEEN INVESTIGATED OR SHOWN ON ADJOINING PROPERTIES.
- SPOT LEVELS AND CONTOURS SHOWN HEREON ARE FOR DESIGN PURPOSES ONLY AND ARE TO BE CONFIRMED ON SITE PRIOR TO ANY EXCAVATION OR CONSTRUCTION.
- THIS PLAN HAS BEEN PREPARED FOR THE PURPOSE OF DESIGN AND SHOULD NOT BE USED FOR ANYTHING OTHER THAN THAT PURPOSE.
- SOME SPOT LEVELS HAVE BEEN REMOVED FROM THE FACE OF THIS PLAN FOR CLARITY. ADDITIONAL SPOT LEVELS CAN BE ACCESSED ON THE ELECTRONIC COPY OF THIS PLAN FOR MORE DETAILED DESIGN WORKS.
- BACKGROUND SURVEY INFORMATION HAS BEEN SOURCED FROM CONTOUR & DETAIL PLAN FROM LAND AND HOUSING CORPORATIONS REF. 8907/001/01, DATED 03/2007.

SUBSURFACE UTILITY INVESTIGATION (SUI) QUALITY LEVEL LABELLING UTILITY INFORMATION BY A CLASSIFICATION CODE ALLOWS THE USER OF THIS INFORMATION TO UNDERSTAND CLEARLY HOW THE INFORMATION WAS COLLECTED AND THEN PLACE AN APPROPRIATE AMOUNT OF RELIANCE ON IT. PROJECT RISKS RELATED TO UNDERGROUND UTILITIES CAN THEN BE PROPERLY MANAGED.

QL - 'A': INFORMATION IS THE HIGHEST POSSIBLE LEVEL OF ACCURACY AND IS OBTAINED BY EXPOSING THE UNDERGROUND UTILITY USING A NON-DESTRUCTIVE EXCAVATION (POTHOLING) TECHNIQUE. THE VERTICAL INFORMATION FOR THIS LOCATING METHOD IS TO THE TOP OR SHALLOWEST PART OF THE LOCATED SERVICE. THE 3D LOCATION IS RECORDED BY SURVEY AS AN X, Y, Z COORDINATE.

QL - 'B': INFORMATION IS COLLECTED BY DESIGNATING THE HORIZONTAL AND VERTICAL LOCATION OF UNDERGROUND UTILITIES BY USING ELECTROMAGNETIC PIPE AND CABLE LOCATORS, SONAR OR FLEXI-TRACE EQUIPMENT. THIS IS THE MOST COMMON FORM OF UTILITY LOCATING AND ALTHOUGH AN X, Y AND Z AXIS CAN BE ESTABLISHED IT IS NOT ALWAYS ENTIRELY ACCURATE DUE TO DIFFERING ELECTROMAGNETIC FIELDS, SOIL CONDITIONS AND MULTIPLE BANKS OF CABLES AFFECTING THE LOCATING SIGNAL.

QL - 'C': INFORMATION IS COLLECTED BY CORRELATING THE SURVEY OF VISIBLE UTILITY SURFACE FEATURES SUCH AS MARKER PLATES OR WATER HYDRANTS AND ACQUIRED DIAL-BEFORE-YOU-DIG PLANS TO "DRAW" A STRING WHICH SHOWS THE APPROXIMATE POSITION OF SERVICES. THIS METHOD DOES NOT USUALLY SHOW MULTIPLE BANKS OF CABLES AND DOES NOT ALWAYS SHOW THREE DIMENSIONAL INFORMATION.

QL - 'D': INFORMATION IS THE MOST BASIC LEVEL OF UTILITY LOCATIONS USING ONLY INFORMATION BASED ON EXISTING DIAL-BEFORE-YOU-DIG PLANS AND BY MEASURING BOUNDARY OFFSETS AS WELL AS ASSISTANCE VIA GROUND PENETRATING RADAR ETC. THIS METHOD OF UTILITY LOCATIONS SHOULD ALWAYS BE TREATED AS AN INDICATION OF THE PRESENCE OF A SERVICE ONLY AND SHOULD NOT BE USED FOR DESIGN.



LEGEND

- 1 PHOTOGRAPH DIRECTION
- C COLUMN
- P PARKING METER
- B BOLLARD
- SI SIGN
- TREE
- PP POWER POLE
- EP ELECTRICAL PILLAR
- SL STREET LIGHT
- HYD HYDRANT
- SV STOP VALVE
- WM WATER METER
- KIP - KERB INLET PIT
- SIP - SURFACE INLET PIT
- SMH SEWER MAN HOLE
- TEL TELSTRA/COMMS PIT
- GA GAS METER
- MK GAS MARKER
- FENCE LINE
- 600 UNDERGROUND SEWER (QL C)
- 300 UNDERGROUND SEWER (QL D)
- 600 UNDERGROUND ELECTRICITY (QL D)
- 600 UNDERGROUND GAS MAIN (QL D)
- 600 UNDERGROUND COMMS (QL D)
- 600 UNDERGROUND WATER MAIN (QL D)
- 600 UNDERGROUND STORMWATER PIPE (QL A)
- 600 UNDERGROUND STORMWATER PIPE (QL D)
- MINOR CONTOUR LINE
- MAJOR CONTOUR LINE
- OVERALL SITE EXTENTS
- BOUNDARY LINE
- TOP & TOE OF BANKS

SUBSURFACE UTILITY INVESTIGATION (SUI) QUALITY LEVEL LABELLING UTILITY INFORMATION BY A CLASSIFICATION CODE ALLOWS THE USER OF THIS INFORMATION TO UNDERSTAND CLEARLY HOW THE INFORMATION WAS COLLECTED AND THEN PLACE AN APPROPRIATE AMOUNT OF RELIANCE ON IT. PROJECT RISKS RELATED TO UNDERGROUND UTILITIES CAN THEN BE PROPERLY MANAGED.

QL - 'A': INFORMATION IS THE HIGHEST POSSIBLE LEVEL OF ACCURACY AND IS OBTAINED BY EXPOSING THE UNDERGROUND UTILITY USING A NON-DESTRUCTIVE EXCAVATION (POTHOLING) TECHNIQUE. THE VERTICAL INFORMATION FOR THIS LOCATING METHOD IS TO THE TOP OR SHALLOWEST PART OF THE LOCATED SERVICE. THE 3D LOCATION IS RECORDED BY SURVEY AS AN X, Y, Z COORDINATE.

QL - 'B': INFORMATION IS COLLECTED BY DESIGNATING THE HORIZONTAL AND VERTICAL LOCATION OF UNDERGROUND UTILITIES BY USING ELECTROMAGNETIC PIPE AND CABLE LOCATORS, SONDES OR FLEXI-TRACE EQUIPMENT. THIS IS THE MOST COMMON FORM OF UTILITY LOCATING AND ALTHOUGH AN X, Y AND Z AXIS CAN BE ESTABLISHED IT IS NOT ALWAYS ENTIRELY ACCURATE DUE TO DIFFERING ELECTROMAGNETIC FIELDS, SOIL CONDITIONS AND MULTIPLE BANKS OF CABLES AFFECTING THE LOCATING SIGNAL.

QL - 'C': INFORMATION IS COLLECTED BY CORRELATING THE SURVEY OF VISIBLE UTILITY SURFACE FEATURES SUCH AS MARKER PLATES OR WATER HYDRANTS AND ACQUIRED DIAL-BEFORE-YOU-DIG PLANS TO "DRAW" A STRING WHICH SHOWS THE APPROXIMATE POSITION OF SERVICES. THIS METHOD DOES NOT USUALLY SHOW MULTIPLE BANKS OF CABLES AND DOES NOT ALWAYS SHOW THREE DIMENSIONAL INFORMATION.

QL - 'D': INFORMATION IS THE MOST BASIC LEVEL OF UTILITY LOCATIONS USING ONLY INFORMATION BASED ON EXISTING DIAL-BEFORE-YOU-DIG PLANS AND BY MEASURING BOUNDARY OFFSETS AS WELL AS ASSISTANCE VIA GROUND PENETRATING RADAR ETC. THIS METHOD OF UTILITY LOCATIONS SHOULD ALWAYS BE TREATED AS AN INDICATION OF THE PRESENCE OF A SERVICE ONLY AND SHOULD NOT BE USED FOR DESIGN.

REFER TO LEGEND FOR QUALITY LEVEL CLASSIFICATIONS OF SERVICES. ALL UTILITIES ARE QL - 'D' UNLESS OTHERWISE NOTED

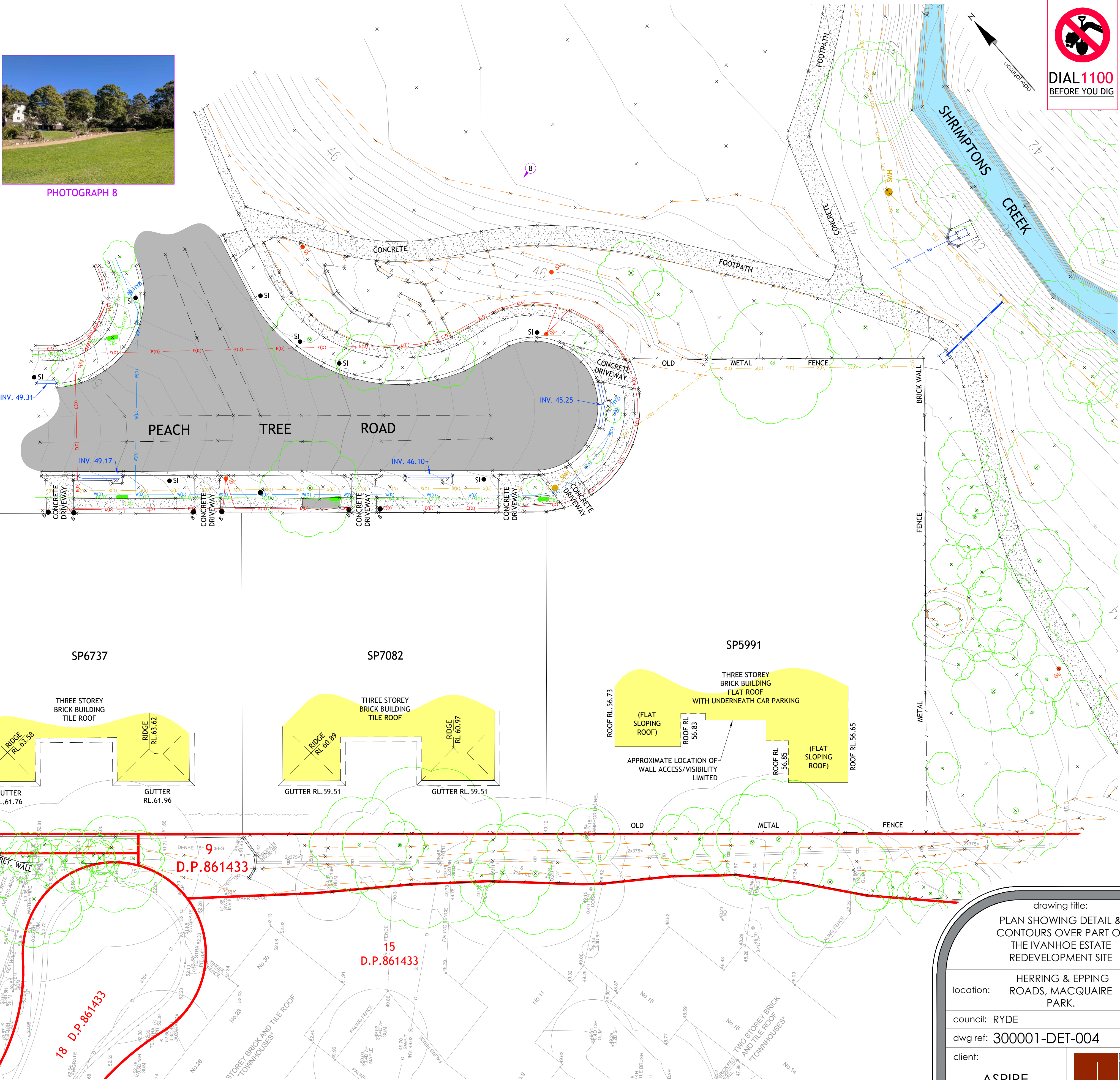
(F) EASEMENT TO DRAIN WATER VARIABLE WIDTH (D.P. 861433)

OTHER TITLE NOTIFICATIONS

- LOT 9 D.P.861433:
- IS SUBJECT TO ANY EASEMENTS, RESTRICTIVE COVENANTS AND PUBLIC RIGHTS OF WAY AFFECTING IT ON 2.2.1944 AS PRESERVED BY S.604(2) LOCAL GOV. ACT, 1919;
- LOTS 9, 10 & 17 D.P.861433:
- ARE AFFECTED BY COVENANT S142036



PHOTOGRAPH 8



ver.	date	comment	surveyed	drawn	checked	pm	co-ordinate information	level information	scale (A1 original size)	page
A	02.11.17	INITIAL ISSUE	DK/CG/PPR	PB	CG	MO	CO-ORDINATE SYSTEM: MGA 56 GROUND ORIGIN OF CO-ORDINATES: P.M.50023 DATE OF SURVEY 05.07.17	DATUM: AHD ORIGIN OF LEVELS: P.M.50023 CONTOUR INTERVAL: 0.25m	0 5.0 10.0 12.5m SCALE: 1:250 (FULL)	9 OF 9

WARNING  
UNDERGROUND  
ELECTRICITY LINES

WARNING  
UNDERGROUND  
OPTICAL FIBRE

drawing title:  
PLAN SHOWING DETAIL &  
CONTOURS OVER PART OF  
THE IVANHOE ESTATE  
REDEVELOPMENT SITE

location: HERRING & EPPING  
ROADS, MACQUAIRE  
PARK.

council: RYDE

dwg ref: 300001-DET-004

client:

ASPIRE  
CONSORTIUM



central coast office ph: (02) 4305 4300  
hunter office ph: (02) 4978 5100  
sydney office ph: (02) 8046 7411

www.adwjohanson.com.au