

# GREENWICH HOSPITAL MASTERPLAN

## Landscape Drawings

Sheet Schedule

| DWG No.      | DWG Title                              | Revision |
|--------------|--|----------|
| 2795-COV-001 | Cover Page and Key Plan - Sheet 1 of 1 | B        |
| 2795-LP-000  | Landscape Zones - Sheet 1 of 4         | B        |
| 2795-PL-001  | Planting Lists - Sheet 1 of 1          | A        |
| 2795-LP-001  | Site Level - Sheet 2 of 4              | B        |
| 2795-LP-002  | Podium Level - Sheet 3 of 4            | A        |
| 2795-LP-003  | Roof Gardens 1 and 2 - Sheet 4 of 4    | A        |



Not to Scale



Copyright  
"This document is & shall remain the property of Complete Urban Pty. Ltd.  
The document may only be used for the purpose for which it was commissioned & in accordance with the terms of engagement for the commission.  
Unauthorised use of this document in any way is prohibited"

 **HammondCare**  
An independent Christian charity

10 Regent Street  
Chippendale NSW 2008

p 02 9282 9900  
f 02 9282 9277

**COMPLETE**

ABN 64 100 037 812

[www.completeurban.com.au](http://www.completeurban.com.au)

Not to Scale

|                |    |              |    |
|----------------|----|--------------|----|
| Drawn          | CN | Designed     | PK |
| Drafting Check | PK | Design Check | PK |
| Approved       |    |              |    |

NOT FOR CONSTRUCTION  
This Drawing must not be used for Construction unless signed as Approved

Client and Job

HammondCare  
Greenwich Hospital Concept Plan

Title

Cover Page and Key Plan  
Sheet 1 of 1

Dwg. No.

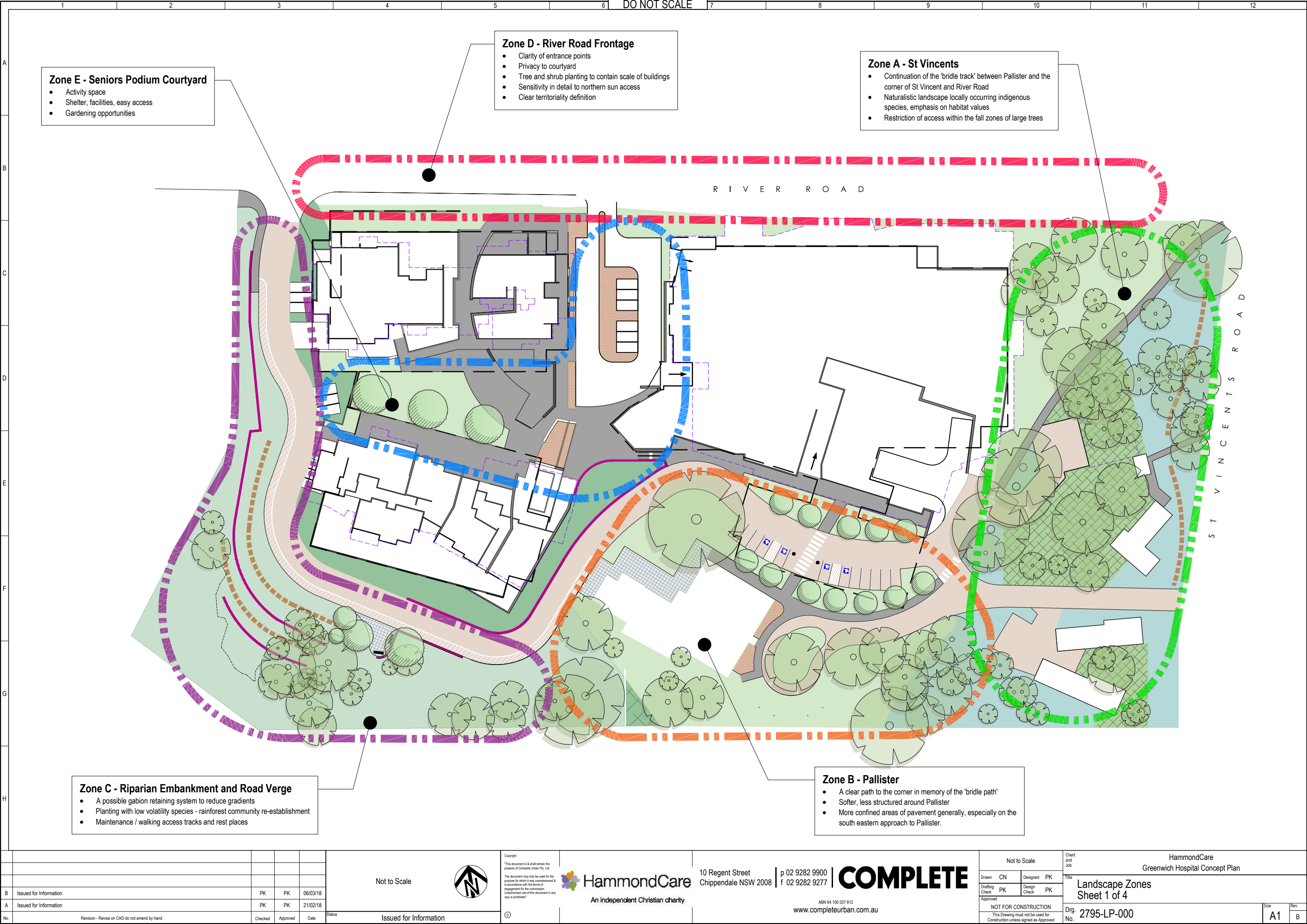
2795-COV-001

Size

A1

Rev

B



**Zone E - Seniors Podium Courtyard**

- Activity space
- Shelter, facilities, easy access
- Gardening opportunities

**Zone D - River Road Frontage**

- Clarity of entrance points
- Privacy to courtyard
- Tree and shrub planting to contain scale of buildings
- Sensitivity in detail to northern sun access
- Clear territoriality definition

**Zone A - St Vincents**

- Continuation of the 'bridle track' between Pallister and the corner of St Vincent and River Road
- Naturalistic landscape locally occurring indigenous species, emphasis on habitat values
- Restriction of access within the fall zones of large trees

**Zone C - Riparian Embankment and Road Verge**

- A possible gabion retaining system to reduce gradients
- Planting with low volatility species - rainforest community re-establishment
- Maintenance / walking access tracks and rest places

**Zone B - Pallister**

- A clear path to the corner in memory of the 'bridle path'
- Softer, less structured around Pallister
- More confined areas of pavement generally, especially on the south eastern approach to Pallister.

|     |   |         |          |          |
|-----|---|---------|----------|----------|
|     |   |         |          |          |
|     |   |         |          |          |
| B   | Issued for Information                        | PK      | PK       | 06/03/18 |
| A   | Issued for Information                        | PK      | PK       | 21/02/18 |
| No. | Revision - Revise on CAD do not amend by hand | Checked | Approved | Date     |

|                        |
|------------------------|
| Not to Scale           |
|                        |
| Issued for Information |

Copyright  
"This document is & shall remain the property of Complete Urban Pty. Ltd.  
The document may only be used for the purpose for which it was commissioned & in accordance with the terms of engagement for the commission.  
Unauthorized use of this document in any way is prohibited"

**HammondCare**  
An independent Christian charity

10 Regent Street  
Chippendale NSW 2008

p 02 9282 9900  
f 02 9282 9277

**COMPLETE**  
ABN 64 100 037 812  
www.completeurban.com.au

|  |                 |                  |
|--|-----------------|------------------|
| Not to Scale   |                 | Client and Job   |
| Drawn CN   | Designed PK     | Yield            |
| Drafting Check PK  | Design Check PK |                  |
| Approved   |                 |                  |
| NOT FOR CONSTRUCTION   |                 |                  |
| This Drawing must not be used for Construction unless signed as Approved |                 |                  |
| Drg. No. 2795-LP-000   |                 | Size A1<br>Rev B |

HammondCare  
Greenwich Hospital Concept Plan  
**Landscape Zones**  
Sheet 1 of 4



## A

## B

## C

D

E

## F

## G

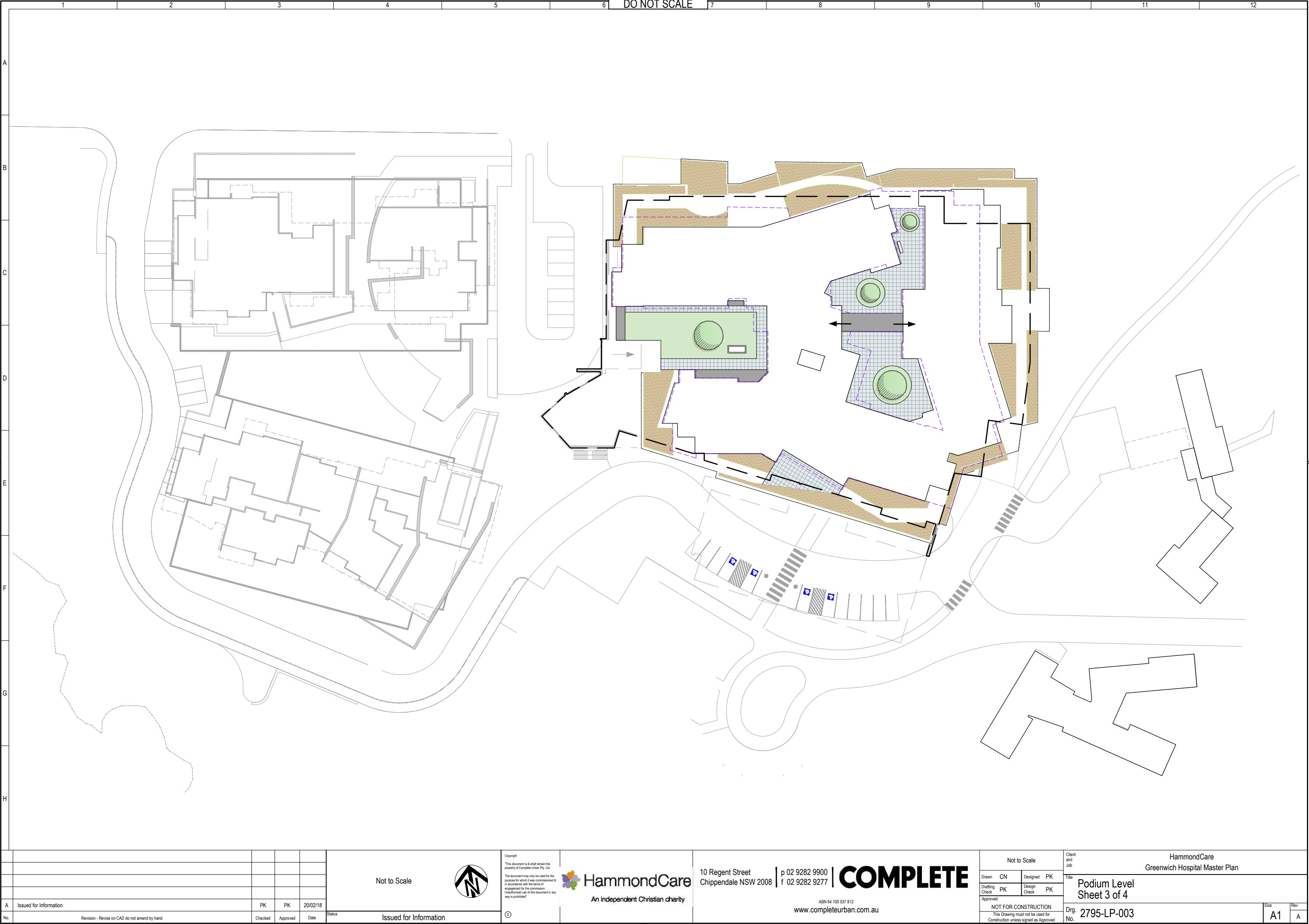
H

\**Quercus ilex* – potentially large tree, but very slow growing and possibly used in hedging

©



|   |  |  |  |   |  |  |  |  |  |  |  |
|---|--|--|--|---|--|--|--|--|--|--|--|
| Not to Scale                                  |  |  |  | Copyright<br>"This document is & shall remain the property of Complete Urban Pty. Ltd.<br>The document may only be used for the purpose for which it was commissioned & in accordance with the terms of engagement for the commission.<br>Unauthorized use of this document in any way is prohibited" |  |  |  | HammondCare<br>Greenwich Hospital Concept Plan   |  |  |  |
| B Issued for Information                      |  |  |  | PK PK 06/03/18  |  |  |  | Title<br>Site Level<br>Sheet 2 of 4  |  |  |  |
| A Issued for Information                      |  |  |  | PK PK 21/02/18  |  |  |  | Drg. No. 2795-LP-001   |  |  |  |
| No.   |  |  |  | Checked Approved Date   |  |  |  | Size Rev<br>A1 B   |  |  |  |
| Revision - Revise on CAD do not amend by hand |  |  |  | Status<br>Issued for Information  |  |  |  | NOT FOR CONSTRUCTION<br>This Drawing must not be used for Construction unless signed as Approved |  |  |  |
|   |  |  |  | ©   |  |  |  | HammondCare<br>An Independent Christian charity  |  |  |  |
|   |  |  |  | 10 Regent Street<br>Chippendale NSW 2008  |  |  |  | p 02 9282 9900<br>f 02 9282 9277   |  |  |  |
|   |  |  |  | www.completeurban.com.au  |  |  |  | COMPLETE   |  |  |  |
|   |  |  |  | ABN 64 100 037 812  |  |  |  |  |  |  |  |



|     |   |         |          |          |
|-----|---|---------|----------|----------|
|     |   |         |          |          |
|     |   |         |          |          |
|     |   |         |          |          |
|     |   |         |          |          |
| A   | Issued for Information                        | PK      | PK       | 20/02/18 |
| No. | Revision - Revise on CAD do not amend by hand | Checked | Approved | Date     |

Not to Scale

Issued for Information

Copyright  
"This document is & shall remain the property of Complete Urban Pty. Ltd.  
The document may only be used for the purpose for which it was commissioned & in accordance with the terms of engagement for the commission.  
Unauthorized use of this document in any way is prohibited"

HammondCare

An independent Christian charity

10 Regent Street  
Chippendale NSW 2008

p 02 9282 9900  
f 02 9282 9277

**COMPLETE**

ABN 64 100 037 812  
www.completeurban.com.au

| Not to Scale   |    |              |    |
|--|----|--------------|----|
| Drawn  | CN | Designed     | PK |
| Drafting Check   | PK | Design Check | PK |
| Approved   |    |              |    |
| NOT FOR CONSTRUCTION   |    |              |    |
| This Drawing must not be used for Construction unless signed as Approved |    |              |    |

Client and Job  
HammondCare  
Greenwich Hospital Master Plan

Title  
Podium Level  
Sheet 3 of 4

Drg. No. 2795-LP-003

Size  
A1

Rev  
A



