

1 Site Plan-SSD
SCALE: 1:500

EXISTING BUILDING LEGEND:

BLDG	LEVEL	DEPARTMENT
A	GR	WEST WING / OFFICES / CLINICAL LIBRARY
B	GR	MATERNITY ENTRANCE
C	GR	MATERNITY
D	GR	KIOSK
E	GR	PAEDIATRIC CLINIC EYE CLINIC MEDICAL IMAGING/ CT
F	GR	LINK / CORRIDOR
G	GR	CRITICAL CARE & MEDICAL OFFICES
H	GR	CHILDREN'S WARD & DAY ONLY UNIT
L1		SURGICAL WARD
L2		MEDICAL WARD
I	GR	EDUCATION
J	GR	RENAL DIALYSIS
K	GR	MEDICAL IMAGING
L	GR	PHARMACY CHAPEL
M	GR	MEDICAL IMAGING
L1		SURGICAL WARD
L2		MEDICAL WARD
O	GR	EMERGENCY INTENSIVE CARE UNIT STAFF DINING/ MEETING & OFFICES
P	LG	KITCHEN
GR		OPERATING THEATRES
L1		CSSD
Q	LG	MORTUARY
GR		PATHOLOGY
T	LG	BACK OF HOUSE
GR		REHABILITATION UNIT
U	GR	COMMUNITY HEALTH CENTRE
V	GR	PHYSIOTHERAPY
W	GR	BIO-MED/ WASTE ASSET MANAGEMENT WORKSHOP
X	LG	SUBSTATION GENERATOR
Y	LG	OXYGEN COMPOUND
Z	LG	ASSESMENT MANAGEMENT OFFICE

SCOPE OF SITE WORKS

- 1 MAIN ENTRY DROP-OFF + PARKING.
REFER TO ARCHITECTURAL DRAWING AR-10-002.
- 2 EMERGENCY DROP-OFF + PARKING.
REFER TO ARCHITECTURAL DRAWING AR-10-002.
- 3 STAFF / FLEET CARPARK.
AMBULANCE ROAD / ACCESS / PLAZA.
REFER TO ARCHITECTURAL DRAWING AR-10-003.
- 4 SERVICE ROAD / LOADING DOCK.
REFER TO ARCHITECTURAL DRAWING AR-10-003.
- 5 WEST COURTYARD / LINK CORRIDOR.
REFER TO ARCHITECTURAL DRAWING AR-10-003.

6&7 CARPARKING.
TO BE CAPTURED AS FINAL WORKS (SEPARATE WORKS FROM THE
NEW ACUTE BUILDING WORKS).

PREVIOUS APPROVED SCHEME		CURRENT SCHEME	
MAIN ENTRY PARKING SPACES	21	MAIN ENTRY PARKING SPACES	19
EMERGENCY PARKING SPACE	22	EMERGENCY PARKING SPACE	24
FLEET PARKING SPACES	30	FLEET PARKING SPACES	30
SOUTHERN PARKING SPACES	31	SOUTHERN PARKING SPACES	31
WESTERN PARKING SPACE	72	WESTERN PARKING SPACE	74
NORTHERN PARKING SPACE	20	NORTHERN PARKING SPACE	19
TOTAL PARKING SPACE =	196	TOTAL PARKING SPACE =	197

KEY PLAN

REV DESCRIPTION DRN DATE

1	ISSUE MODIFICATION APPLICATION SUBMISSION	16	08/02/2019
2	ISSUE MODIFICATION APPLICATION	16	22/10/2019
3	ISSUE MODIFICATION APPLICATION	16	08/08/2022
4	ISSUE MODIFICATION APPLICATION	16	08/08/2022
5	ISSUE MODIFICATION APPLICATION	16	08/08/2022
6	ISSUE MODIFICATION APPLICATION	16	08/08/2022
7	ISSUE MODIFICATION APPLICATION	16	08/08/2022
8	ISSUE MODIFICATION APPLICATION	16	08/08/2022
9	ISSUE MODIFICATION APPLICATION	16	08/08/2022
10	ISSUE MODIFICATION APPLICATION	16	08/08/2022
11	ISSUE MODIFICATION APPLICATION	16	08/08/2022
12	ISSUE MODIFICATION APPLICATION	16	08/08/2022
13	ISSUE MODIFICATION APPLICATION	16	08/08/2022
14	ISSUE MODIFICATION APPLICATION	16	08/08/2022
15	ISSUE MODIFICATION APPLICATION	16	08/08/2022
16	ISSUE MODIFICATION APPLICATION	16	08/08/2022
17	ISSUE MODIFICATION APPLICATION	16	08/08/2022
18	ISSUE MODIFICATION APPLICATION	16	08/08/2022
19	ISSUE MODIFICATION APPLICATION	16	08/08/2022
20	ISSUE MODIFICATION APPLICATION	16	08/08/2022
21	ISSUE MODIFICATION APPLICATION	16	08/08/2022
22	ISSUE MODIFICATION APPLICATION	16	08/08/2022
23	ISSUE MODIFICATION APPLICATION	16	08/08/2022
24	ISSUE MODIFICATION APPLICATION	16	08/08/2022
25	ISSUE MODIFICATION APPLICATION	16	08/08/2022
26	ISSUE MODIFICATION APPLICATION	16	08/08/2022
27	ISSUE MODIFICATION APPLICATION	16	08/08/2022
28	ISSUE MODIFICATION APPLICATION	16	08/08/2022
29	ISSUE MODIFICATION APPLICATION	16	08/08/2022
30	ISSUE MODIFICATION APPLICATION	16	08/08/2022
31	ISSUE MODIFICATION APPLICATION	16	08/08/2022
32	ISSUE MODIFICATION APPLICATION	16	08/08/2022
33	ISSUE MODIFICATION APPLICATION	16	08/08/2022
34	ISSUE MODIFICATION APPLICATION	16	08/08/2022
35	ISSUE MODIFICATION APPLICATION	16	08/08/2022
36	ISSUE MODIFICATION APPLICATION	16	08/08/2022
37	ISSUE MODIFICATION APPLICATION	16	08/08/2022
38	ISSUE MODIFICATION APPLICATION	16	08/08/2022
39	ISSUE MODIFICATION APPLICATION	16	08/08/2022
40	ISSUE MODIFICATION APPLICATION	16	08/08/2022
41	ISSUE MODIFICATION APPLICATION	16	08/08/2022
42	ISSUE MODIFICATION APPLICATION	16	08/08/2022
43	ISSUE MODIFICATION APPLICATION	16	08/08/2022
44	ISSUE MODIFICATION APPLICATION	16	08/08/2022
45	ISSUE MODIFICATION APPLICATION	16	08/08/2022
46	ISSUE MODIFICATION APPLICATION	16	08/08/2022
47	ISSUE MODIFICATION APPLICATION	16	08/08/2022
48	ISSUE MODIFICATION APPLICATION	16	08/08/2022
49	ISSUE MODIFICATION APPLICATION	16	08/08/2022
50	ISSUE MODIFICATION APPLICATION	16	08/08/2022

COPYRIGHT
ALL RIGHTS RESERVED. THIS WORK IS COPYRIGHTED AND CANNOT BE REPRODUCED OR COPIED IN ANY FORM OR BY ANY MEANS, GRAPHIC, ELECTRONIC OR MECHANICAL, INCLUDING PHOTOCOPYING, WITHOUT THE WRITTEN PERMISSION OF THE PRINCIPAL. UNDER THE TERMS OF THE CONTRACT ANY LICENSE, EXPRESS OR IMPLIED, TO USE THE DOCUMENT FOR ANY PURPOSE WHATSOEVER IS RESTRICTED TO THE TERMS OF THE AGREEMENT OR IMPLICIT AGREEMENT WITH THE PRINCIPAL, UNDER THE TERMS OF THE CONTRACT.

DESIGNATIONS
USE FIGURED DIMENSIONS. DO NOT SCALE. CONTRACTORS MUST VERIFY ALL DIMENSIONS ON THE SITE BEFORE COMMENCING ANY WORK OR MAKING ANY SHOP DRAWING WHICH MUST BE SUBMITTED AND REVIEWED BEFORE MANUFACTURE.

FIXTURES, FITTINGS & EQUIPMENT SPECIFICATIONS
SUBSTITUTE FF&E EQUIPMENT SPECIFICATIONS
THE FF&E DESIGN AND DOCUMENTATION HAS BEEN COMPLETED ON THE BASIS OF FF&E AND EQUIPMENT ADVISED TO THIS OFFICE AT THE TIME OF BRIEFING THE DESIGN. THE DESIGN PROVIDING FOR FF&E AND EQUIPMENT INCORPORATES SENSITIVE ALLOCATIONS, SERVICING, LOADING AND ACCESS CLEARANCES AND WHERE APPROPRIATE SERVICE REQUIREMENTS, HAVING DUE REGARD FOR SUBORDINATE FEATURES AND FITTINGS. IT SHOULD BE NOTED THAT SUBSTITUTE FF&E OR EQUIPMENT WITH ALTERNATE SPECIFICATIONS SHOULD NOT BE PROVIDED PRIOR TO VALIDATING THOSE SPECIFICATIONS AGAINST THE ITEM CONTROL SCHEDULE AND DESIGN PROVIDED IN THE MODELS. THIS OFFICE ACCEPTS NO RESPONSIBILITY FOR THE PROCUREMENT OF SUBSTITUTE FF&E AND EQUIPMENT WHICH HAS NOT BEEN REVIEWED AND VALIDATED AGAINST THE ORIGINAL DESIGN PROVIDING.

SERVICE POINTS DISCLAIMER
THE SERVICE POINTS IDENTIFIED ON THESE DRAWINGS HAVE BEEN OVERLAYED FROM THE BUILDING SERVICES ENGINEERING MODEL, AND ARE PROVIDED FOR INFORMATION AND SET-OUT PURPOSES ONLY. WE HAVE BEEN ADVISED BY THE SERVICES ENGINEERS THAT THE POINTS REPRESENTED ON THESE DRAWINGS ARE CORRECT AT THE TIME OF PUBLICATION. THIS OFFICE DOES NOT WARRANT THE ACCURACY OF THE DATA. REFER TO THE BUILDING SERVICES ENGINEERING DOCUMENTATION FOR THE INSTALLATION OF THE SERVICE POINTS, AND THE INTERFERENCE BETWEEN THE SERVICE POINTS AND THE RESPECTIVE ENGINEERING SYSTEMS.

ISSUED FOR INFORMATION
ARCHITECTS

STH
ARCHITECTS
ABN: 21 134 476 065
PELAGO COMPLEX, BUILDING 3, LEVEL 2
21-31 GOSWOLD WOOD ST, RICHMOND VIC 3121 AUSTRALIA
PH: (03) 9885 2320 FAX: (03) 9885 2455
THIS ARCHITECTURAL DESIGN IS THE COPYRIGHT OF
SILVER THOMAS HANLEY (AUS) PTY LTD ABN 21 134 476 065
AND SHALL NOT BE REPRODUCED WITHOUT THEIR WRITTEN PERMISSION
CLIENT

NSW GOVERNMENT
Health Infrastructure

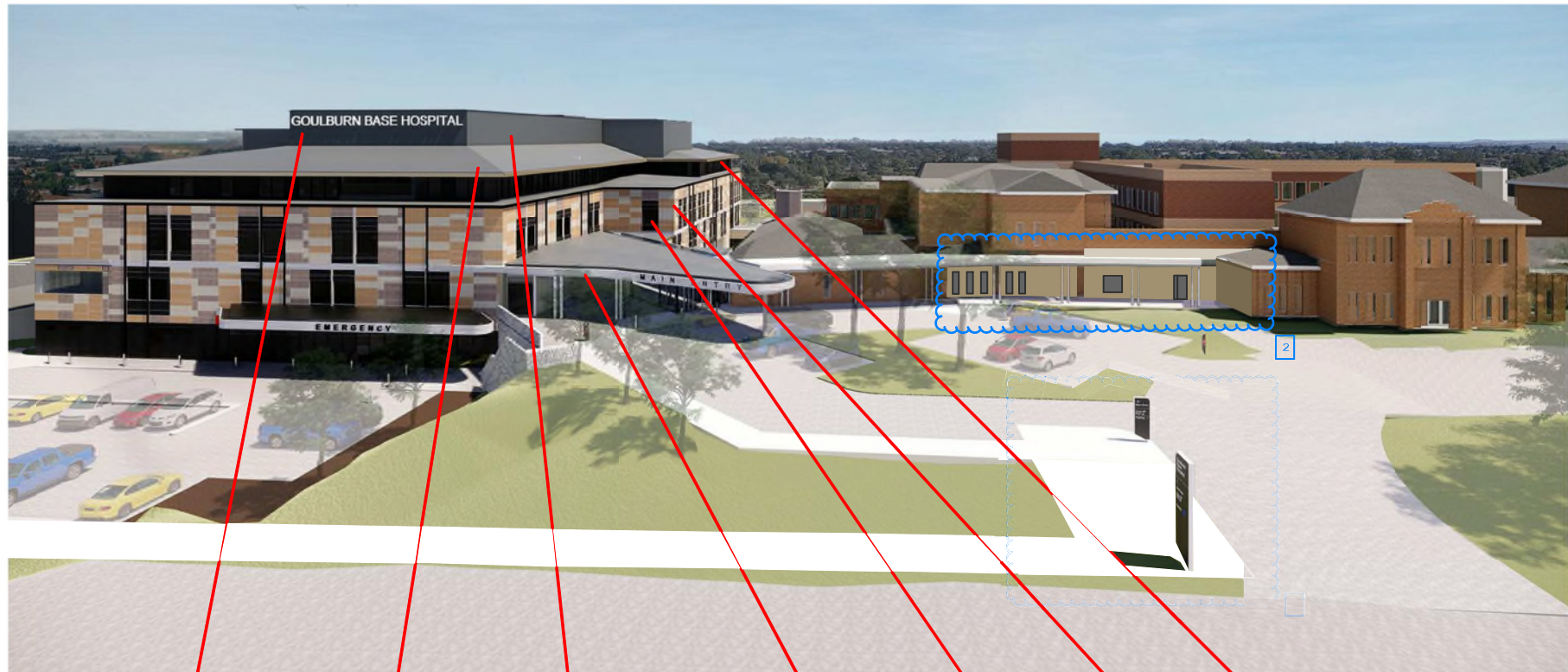
PROJECT MANAGER
TSA
MANAGEMENT
Level 15, 207 Kent Street,
Sydney NSW 2000
PH: (02) 9276 1400

PROJECT
Goulburn Hospital & Health Service Redevelopment
130 Goldsmith St, Goulburn NSW 2580

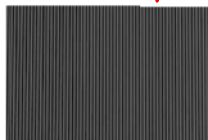
DRAWING TITLE
SITE PLAN - PROPOSED MAIN WORKS - S4.55 MODIFICATION APPLICATION

SCALE DATE DRAWN BY CHECKED
As indicated A1 08/01/19 MS MS

PROJECT NO. DRAWING NO. REVISION
10406.00 AA-02-02 **C**



2 FACADE OF BUILDING 'O' ADJUSTED
AS SHOWN ON DRAWING TITLED
"LINKWAY CANOPY PLANS -
ELEVATION - SECTION & DETAILS."



VMC VERTICAL METAL CLADDING



MDR PITCHED METAL ROOF



LVA VERTICAL ROOF PLANT LOUVER



LV VERTICAL STAIR LOUVER



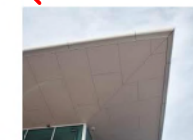
CFC FIBER CEMENT SHEET CLADDING



LW BLACK ALUMINUM WINDOW FRAMES



PFT PORCELIN STONE LOOK FACADE TILE



CFE CFC EAVES LINING

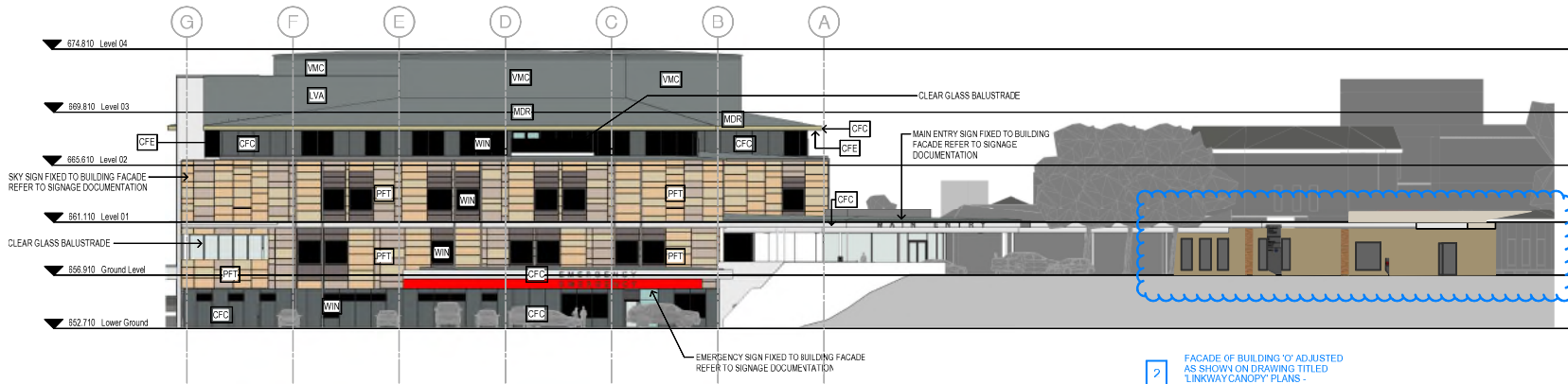
BUILDING PERSPECTIVE

Goulburn Hospital & Health Service Redevelopment

Project Number 10406.00

Scale @ A1 Sheet Size As indicated Date 12/07/22

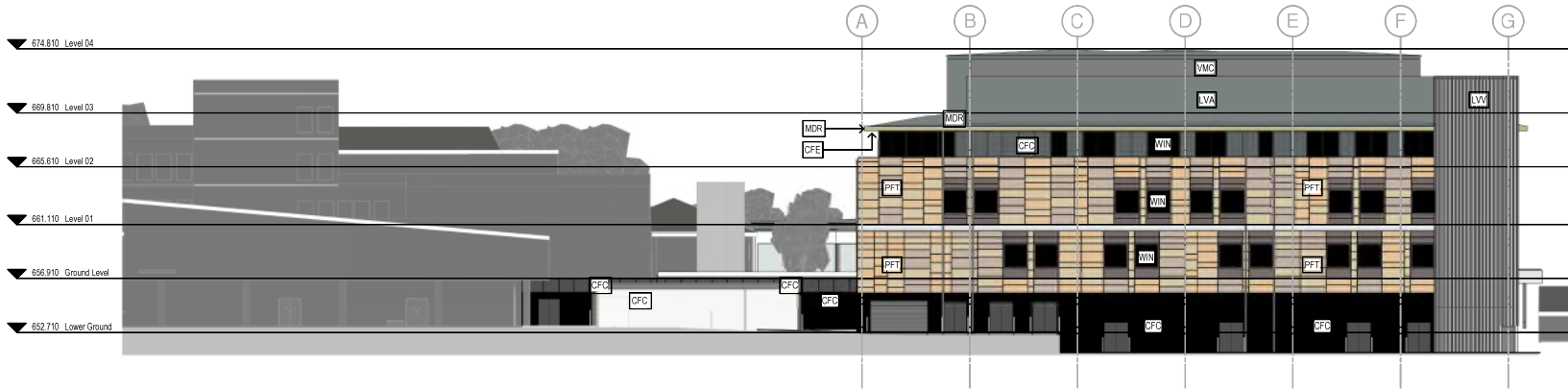
Drawing Number: AA-21-03



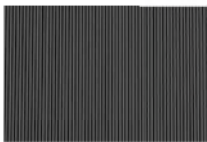
1 North Elevation Site
SCALE: 1:200

- THE MAIN MATERIAL ELEMENT OF THE BUILDING FACADE IS A PORCELAIN TILE WHICH WRAPS AROUND MOST OF THE BUILDING AT LEVELS GROUND AND 1. THERE ARE FIVE TILE COLORS CAPTURED IN A VERTICAL ARRANGEMENT.
- EXTERNAL STAIRS ARE STILL CLEARLY VISIBLE BUT ARE NOW CAPTURED WITHIN THE BUILDING FOOTPRINT.
- THE ENTIRE LEVEL 2 FOOT PRINT IS OFFSET IN TOWARDS THE BUILDING WHICH REVEALS A FLUSH SOFTY AND ANGLED ROOFING WHICH IS NOW VISIBLE FROM THE STREET.
- WINDOW LOCATIONS HAVE BEEN ADJUSTED TO CAPTURE THE ADJUSTED BEDROOM AND EXTERNAL ROOM LOCATION.
- AN ALTERNATIVE ARCHITECTURAL TYPOLOGY BETWEEN THE MAIN ENTRY EMERGENCY ENTRY AND THE REST OF THE BUILDING TO CLEARLY DELINEATE ENTRY POINTS.
- BUILDING HEIGHT HAS BEEN REDUCED.
- THE LOWER GROUND LEVEL HAS RECEIVED THE SAME TREATMENT AS LEVEL 2 WHICH IS TO FURTHER REDUCE THE BUILDING'S VISUAL BULK.

2 FACADE OF BUILDING 'O' ADJUSTED AS SHOWN ON DRAWING TITLED 'LINKWAY CANOPY' PLANS - ELEVATION - SECTION & DETAILS.



2 South Elevation Site
SCALE: 1:200



VMC VERTICAL METAL CLADDING



MDR PITCHED METAL ROOF



LVA VERTICAL ROOF PLANT LOUVER



LVV VERTICAL STAIR LOUVER



CFC VERTICAL STAIR LOUVER



WIN BLACK ALUMINUM WINDOW FRAMES



PFT PORCELAIN STONE LOOK FACADE TILE



CFC CFC EAVES LINING

KEY PLAN				
REV	DESCRIPTION	DATE	BY	CHECKED
1	ISSUED FOR INFORMATION	07/09/19	Author	Checker
2	ISSUED FOR INFORMATION	07/09/19	Author	Checker
3	ISSUED FOR INFORMATION	07/09/19	Author	Checker
4	ISSUED FOR INFORMATION	07/09/19	Author	Checker
5	ISSUED FOR INFORMATION	07/09/19	Author	Checker
6	ISSUED FOR INFORMATION	07/09/19	Author	Checker
7	ISSUED FOR INFORMATION	07/09/19	Author	Checker
8	ISSUED FOR INFORMATION	07/09/19	Author	Checker
9	ISSUED FOR INFORMATION	07/09/19	Author	Checker
10	ISSUED FOR INFORMATION	07/09/19	Author	Checker
11	ISSUED FOR INFORMATION	07/09/19	Author	Checker
12	ISSUED FOR INFORMATION	07/09/19	Author	Checker
13	ISSUED FOR INFORMATION	07/09/19	Author	Checker
14	ISSUED FOR INFORMATION	07/09/19	Author	Checker
15	ISSUED FOR INFORMATION	07/09/19	Author	Checker
16	ISSUED FOR INFORMATION	07/09/19	Author	Checker
17	ISSUED FOR INFORMATION	07/09/19	Author	Checker
18	ISSUED FOR INFORMATION	07/09/19	Author	Checker
19	ISSUED FOR INFORMATION	07/09/19	Author	Checker
20	ISSUED FOR INFORMATION	07/09/19	Author	Checker

COPYRIGHT
ALL RIGHTS RESERVED. THIS WORK IS COPYRIGHTED AND CANNOT BE REPRODUCED OR COPIED IN ANY FORM OR BY ANY MEANS, ELECTRONIC OR MECHANICAL, INCLUDING PHOTOCOPYING, WITHOUT THE WRITTEN PERMISSION OF THE PRINCIPAL. UNDER THE TERMS OF THE CONTRACT, ANY LICENSE, CONSENT, OR IMPLIED TO USE THE DOCUMENT FOR ANY PURPOSE WHATSOEVER IS RESTRICTED TO THE TERMS OF THE CONTRACT OR IMPLIED AGREEMENT WITH THE PRINCIPAL UNDER THE TERMS OF THE CONTRACT.

DIMENSIONS
USE FIGURED DIMENSIONS. DO NOT SCALE. CONTRACTORS MUST VERIFY ALL DIMENSIONS ON THE SITE BEFORE COMMENCING ANY WORK OR MAKING ANY SHOP DRAWING WHICH MUST BE SUBMITTED AND REVIEWED BEFORE MANUFACTURE.

FIXTURES, FITTINGS & EQUIPMENT SPECIFICATIONS
SUBSTITUTE FIRE EQUIPMENT SPECIFICATIONS
THE FIRE EQUIPMENT AND DOCUMENTATION HAS BEEN OBTAINED ON THE BASIS OF FIRE AND EQUIPMENT ADVISED TO THIS OFFICE AT THE TIME OF SUBMITTING THE DESIGN. THE DESIGN PROVIDES FOR THE FIRE AND EQUIPMENT REQUIREMENTS. OTHER ALLOCATIONS, DELIVERING, LOADING AND ACCESS, CLEANING AND WASTE APPROPRIATE SERVICES REQUIREMENTS, HAVING DUE REGARD FOR SURROUNDING UTILITIES AND FITTINGS, IT SHOULD BE NOTED THAT SUBSTITUTES FOR EQUIPMENT WITH ALTERNATE SPECIFICATIONS SHOULD NOT BE PROVIDED PRIOR TO VALIDATING PROPOSAL SPECIFICATIONS AGAINST THE DESIGN CONTROL NO. 10.1 AND 10.2. PROVIDING IN THE MODEL, THIS OFFICE ACCEPTS NO RESPONSIBILITY FOR THE PROVISION OF SUBSTITUTE FIRE AND EQUIPMENT IF IT HAS NOT BEEN REVIEWED AND VALIDATED AGAINST THE ORIGINAL DESIGN PROVISIONS.

SERVICE POINTS DISCLAIMER
THE SERVICE POINTS IDENTIFIED ON THESE DRAWINGS HAVE BEEN OVERLAPED FROM THE BUILDING SERVICES ENGINEERING MODEL, AND ARE PROVIDED FOR INFORMATION. THE DESIGN PROVIDES ONLY THE SERVICE POINTS IDENTIFIED BY THE SERVICES ENGINEERS. THAT THE POINTS IDENTIFIED ON THESE DRAWINGS ARE CORRECT AT THE TIME OF SUBMITTAL. THE OFFICE DOES NOT WARRANT THE ACCURACY OF THE DATA REFER TO THE BUILDING SERVICES ENGINEERING DOCUMENTATION FOR THE INSTALLATION OF THE SERVICE POINTS AND THE INTERFACE BETWEEN THE SERVICE POINTS AND THE RESPECTIVE ENGINEERING SYSTEMS.

ISSUED FOR INFORMATION

ARCHITECT

STH
ARCHITECTS
ABN: 21 154 476 065
PELAGO COMPLEX BUILDING 1 LEVEL 2
2511 GOODWOOD ST. HENDON VIC 3151 AUSTRALIA
PH: (03) 985 2200 FAX: (03) 985 2400
THE ARCHITECTURAL DESIGN IS THE COPYRIGHT OF
SILVER THOMAS HALLBY (ARCHITECTS) PTY LTD ABN 21 154 476 065
AND SHALL NOT BE REPRODUCED WITHOUT THEIR WRITTEN PERMISSION.
CLIENT

NSW GOVERNMENT
Health Infrastructure

PROJECT MANAGER

TSA MANAGEMENT
Level 15, 207 Kent Street,
Sydney NSW 2000
PH: (02) 9276 1400

PROJECT

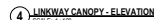
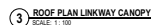
Goulburn Hospital & Health Service Redevelopment
130 Goldsmith St, Goulburn NSW 2580

DRAWING TITLE
ELEVATIONS - NORTH & SOUTH - SSDA

SCALE: DATE: 07/09/19 DRAWN BY: CHECKED: Author Checker

PROJECT NO: DRAWING NO: REVISION: B

10406.00 AA-21-01



130 Goldsmith St, Goulburn NSW 2580

DRAWING TITLE

**LINKWAY CANOPY PLANS -
ELEVATION - SECTIONS &
DETAILS**

SCALE DATE DRAWN BY CHECKED
As indicated@AG 10/22/21 DP DP

PROJECT No DRAWING No REVISION

10516 18483-STH-AR-DWG-62-N5