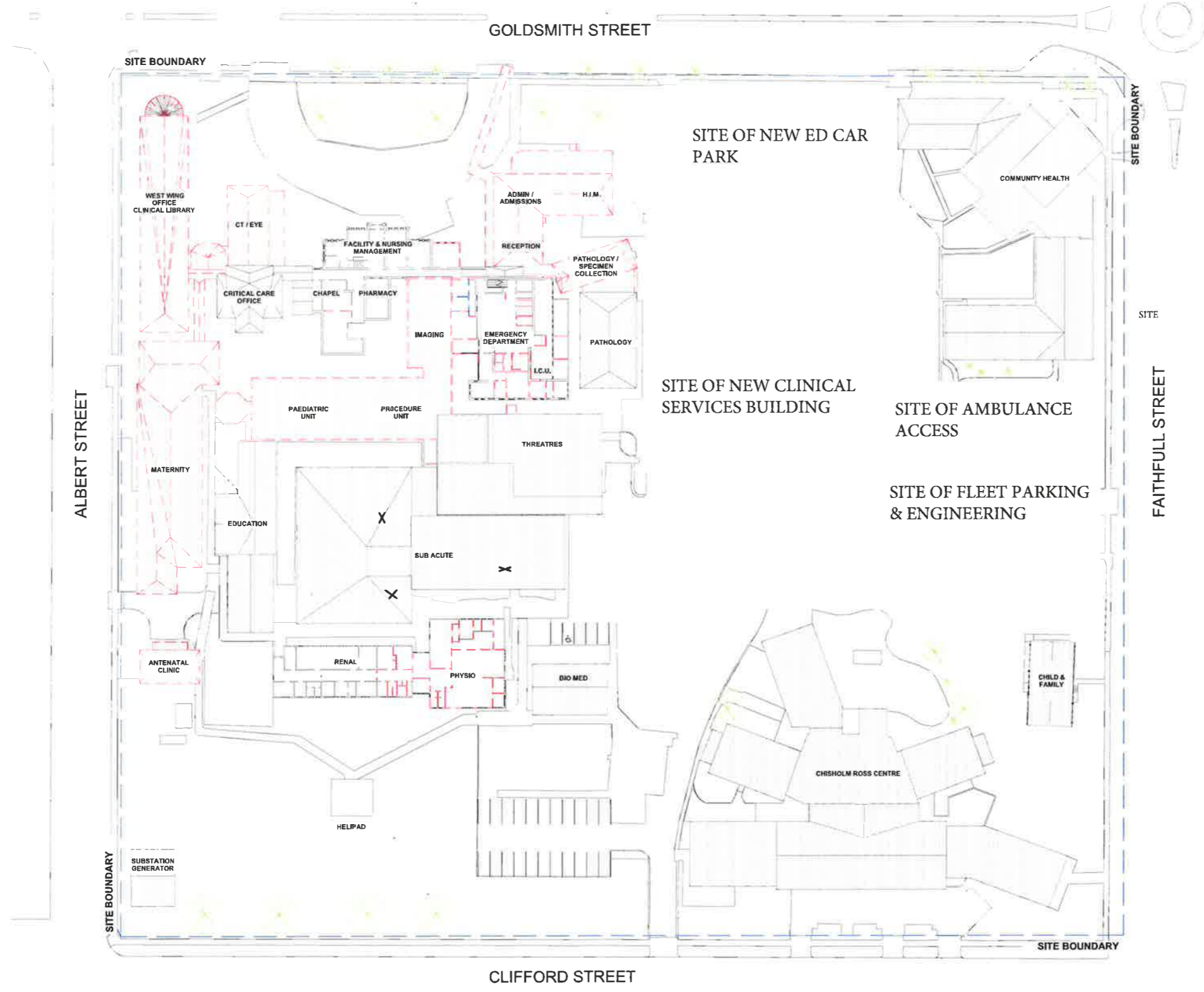




KEY
[Red dashed line] DEMOLISHED



NSW GOVERNMENT | **Planning & Environment**
 Issued under the Environmental Planning and Assessment Act 1979
 Approved Application No. SSD 8667
 granted on the 03 DEC 2018
 Signed [Signature]
 Sheet No. 1 of 27

E	For SSDA	30.11.18
D	REVISED PLAN	07.11.18
BY STH		
C	FROZEN PLAN	13.07.17
ISSUE		
B	IC3	22.06.17
A	IC2	31.05.17
REV		

1477 Pacific Hwy,
 North Sydney,
 NSW 2060
 T +61 2 9578 5402
www.nhra.health.nsw.gov.au/
 HEALTH INFRASTRUCTURE
 PROJECT MANAGER
 TSA MANAGEMENT
 BILLIARD LEECE PARTNERSHIP
 BONACCI GROUP
 WOOD AND GRIEVE ENGINEERS
 CHIEF
 BM+G
 TTW



BLP
 Billard Leece Partnership Pty Ltd
 Architects & Urban Planners
 Studio 201, 50 Holt Street
 Surry Hills 2010
 NSW Australia
 T +61 2 8596 4066
 E info@blp.com.au
 www.blp.com.au

GOULBURN
 HOSPITAL &
 HOSPITAL SERVICES
 REDEVELOPMENT

SITE PLAN -
 DEMOLITION

Project No	15614 / 10406
Scale	Date
1:500@A1	30-11-2018
Drawn By	Checked By
BLP	STH
Drawing No	Revision
AA01-0101	0

SCHEMATIC
 DESIGN

Amended Landscape in car park and sweeping drive.

Amended Building Entry

Amended Car Park layout

Education Building to remain

NSW GOVERNMENT | **Planning & Environment**
 Issued under the Environmental Planning and Assessment Act 1979

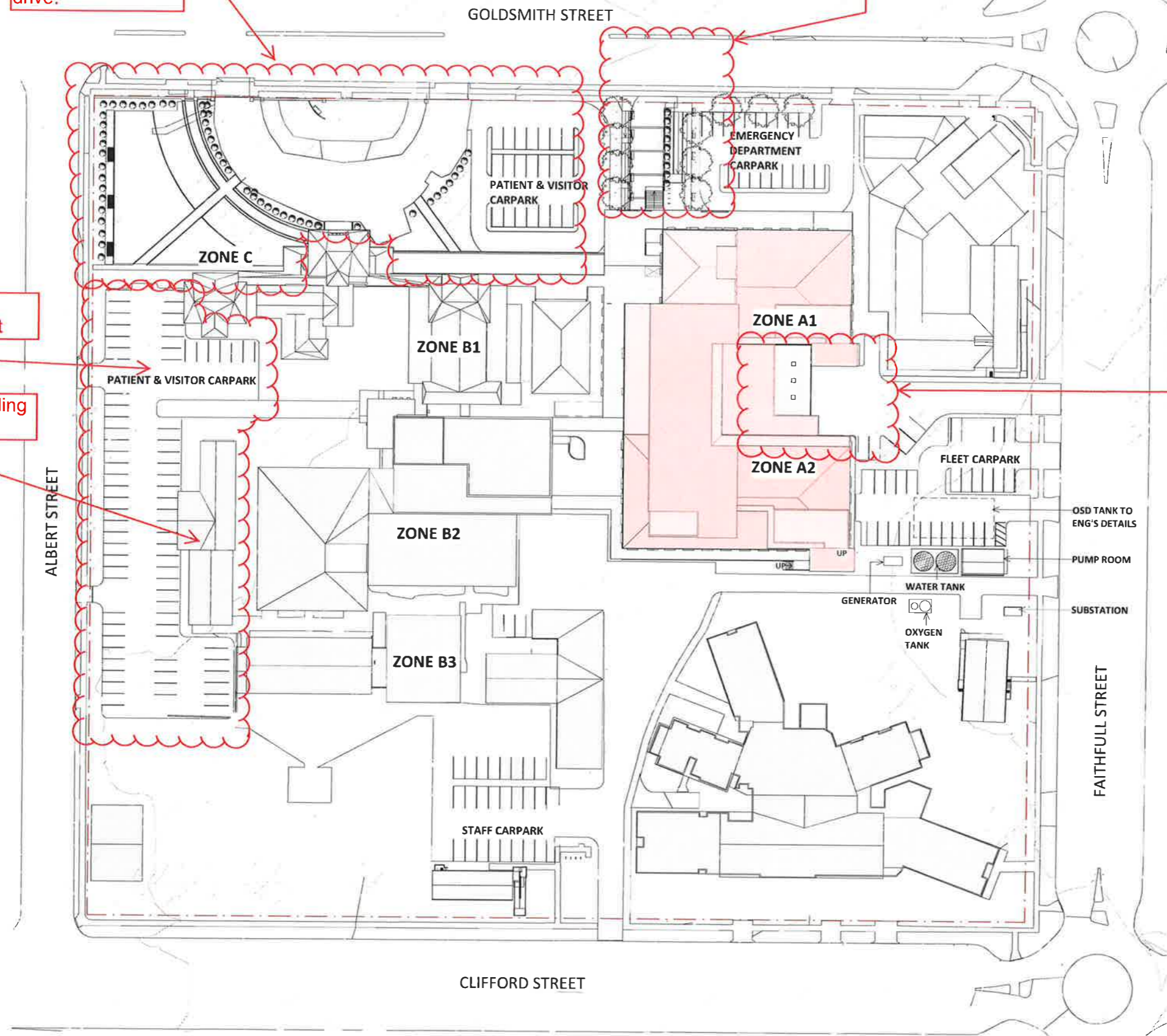
Approved Application No. SSD 8667
 granted on the 03 DEC 2018

Signed [Signature]

Sheet No. 2 of 27

Amended Ambulance Bay

Rev	Date	Description	By	Chk
A	06.06.18	50% Design Documentation Issue		
B	25.06.18	Issue for Coordination		
C	02.07.18	Issue for Coordination		
D	04.07.18	Issue for Coordination		
E	06.07.18	Issue for Coordination		
F	10.07.18	Issue for Review		
G	20.07.18	Issue for Coordination		
H	27.07.18	Issue for review		
I	03.08.18	Issue for Coordination		
K	10.08.18	Issue for Coordination		
L	23.08.18	ISSUE FOR TENDER		



PROJECT MANAGER
 TSA MANAGEMENT
 Level 15, 207 Kent Street
 Sydney NSW 2000
 T +61 2 9276 1400

CLIENT
 NSW HI
 14/77 Pacific Hwy
 North Sydney NSW 2060
 T +61 2 9276 1400
 www.hinfra.health.nsw.gov.au

Health Infrastructure

Level 20, 25 Blich Street
 Sydney NSW 2000
 T +61 2 9232 6969
 F +61 2 9232 6979
 E sydney@pvh.com.au
 ABN 59 453 647 626

PROJECT
 GOULBURN HOSPITAL & HEALTH SERVICE REDEVELOPMENT

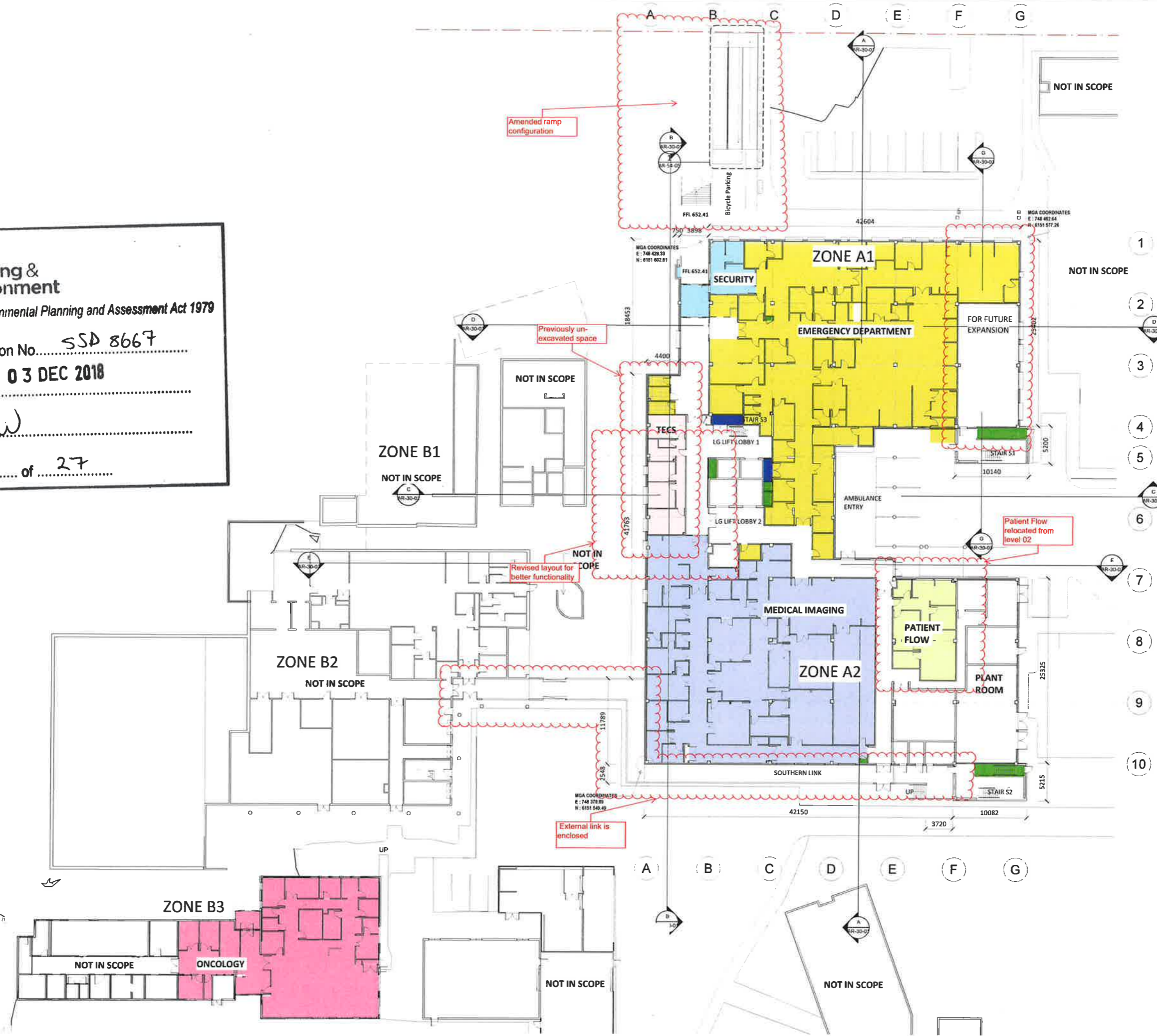
DRAWING TITLE
 SITE PLAN - PROPOSED MAIN WORKS

SCALE
 1:500 @ A1

NOT TO BE USED FOR CONSTRUCTION		
DRAWN BY	APPROVED	
Author	Approver	
PROJECT	DRAWING	REV
4703	AR-02-02	L

FIGURED DIMENSIONS SHALL TAKE PRECEDENCE OVER SCALE. CONTRACTORS MUST VERIFY ALL DIMENSIONS ON SITE BEFORE COMMENCING ANY WORK OR SHOW DRAWINGS. ALL OMISSIONS AND DISCREPANCIES TO BE REPORTED TO PROJECT MANAGER IMMEDIATELY. THIS DRAWING IS ISSUED SUBJECT TO THE GOULBURN HOSPITAL DATA DISCLAIMER AVAILABLE ON OUR WEBSITE AT <http://www.pvh.com.au/data-disclaimer>

NSW GOVERNMENT Planning & Environment
 Issued under the Environmental Planning and Assessment Act 1979
 Approved Application No. SSD 8667
 granted on the 03 DEC 2018
 Signed [Signature]
 Sheet No. 3 of 27



Rev	Date	Description	Drn	Clk
A	05.04.18	FOR REVIEW	AIL	MSK
B	06.06.18	50% Design Documentation Issue		
C	19.06.18	Issue for Coordination		
D	25.06.18	Issue for Coordination		
E	06.07.18	Issue for Coordination		
F	20.07.18	Issue for Coordination		
G	27.07.18	Issue for review		
H	03.08.18	Issue for Coordination		
I	23.08.18	ISSUE FOR TENDER		

DEPARTMENT LEGEND

- ELEC
- Emergency Department
- Medical Imaging
- Non Clinical Support
- Oncology Day
- Patient Flow
- RISER
- TECS

PROJECT MANAGER
 TSA MANAGEMENT
 Level 25, 207 Kent Street
 Sydney NSW 2000
 T +61 2 9276 1400

CLIENT
 NSW HI
 24/77 Pacific Hwy
 North Sydney NSW 2060
 T +61 2 9276 1400
 www.health.nsw.gov.au

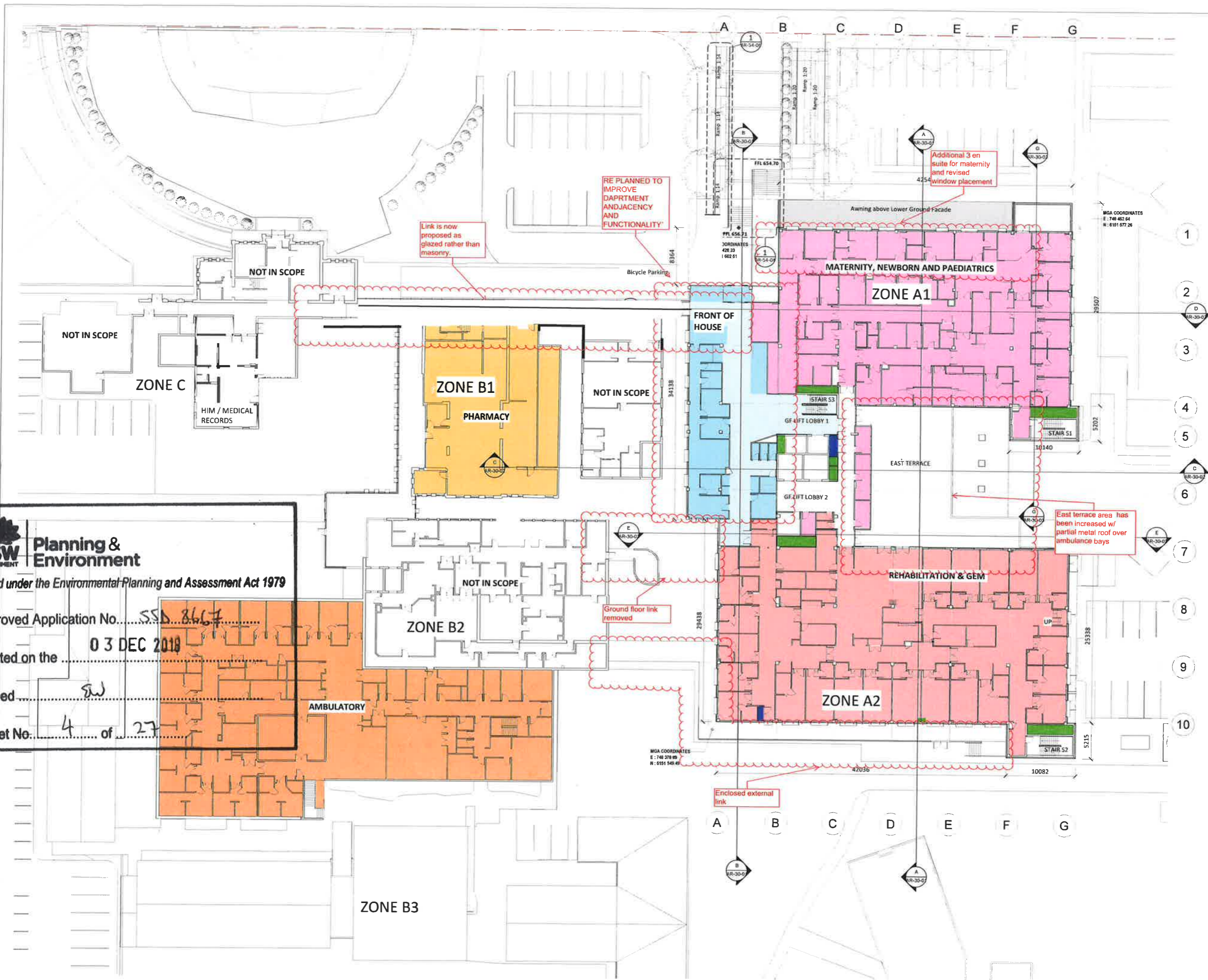
Level 20, 25 Bligh Street
 Sydney NSW 2000
 T +61 2 9232 6969
 F +61 2 9232 6979
 E sydney@pvh.com.au
 ABN 59 453 647 626

PROJECT
 GOULBURN HOSPITAL & HEALTH
 SERVICE REDEVELOPMENT

DRAWING TITLE
 PRECINCT PLAN - LOWER
 GROUND

SCALE
 1 : 250 @ A1

NOT TO BE USED FOR CONSTRUCTION		
DRAWN BY JCS	APPROVED MSK	
PROJECT 4703	DRAWING AR-10-01	REV J



Rev	Date	Description	Drn	Chk
A	05.04.18	FOR REVIEW	AL	MSK
B	06.06.18	50% Design Documentation Issue		
C	19.06.18	Issue for Coordination		
D	25.06.18	Issue for Coordination		
E	06.07.18	Issue for Coordination		
F	20.07.18	Issue for Coordination		
G	27.07.18	Issue for review		
H	03.08.18	Issue for Coordination		
I	23.08.18	ISSUE FOR TENDER		

- DEPARTMENT LEGEND**
- Ambulatory
 - ELEC
 - Generic Inpatient Unit - Rehabilitation incl. Geriatric Evaluation and Management Unit (32 BEDS)
 - Maternal / Newborn Care + Paediatrics
 - Non Clinical Support
 - Non Clinical Support - circulation
 - Pharmacy
 - RISER

PROJECT MANAGER
TSA MANAGEMENT
 Level 15, 207 Kent Street
 Sydney NSW 2000
 T +61 2 9276 1400



CLIENT
NSW HI
 14/77 Pacific Hwy
 North Sydney NSW 2060
 T +61 2 9276 1400
www.hinfra.health.nsw.gov.au



Level 20, 25 Blich Street
 Sydney NSW 2000
 T +61 2 9232 6969
 F +61 2 9232 6979
 E sydney@pvh.com.au
 ABN 59 453 647 626

PROJECT
GOULBURN HOSPITAL & HEALTH SERVICE REDEVELOPMENT

DRAWING TITLE
PRECINCT PLAN - GROUND FLOOR

SCALE
 1 : 250 @ A1

NOT TO BE USED FOR CONSTRUCTION		
DRAWN BY	APPROVED	
JCS	MSK	
PROJECT	DRAWING	REV
4703	AR-10-02	J

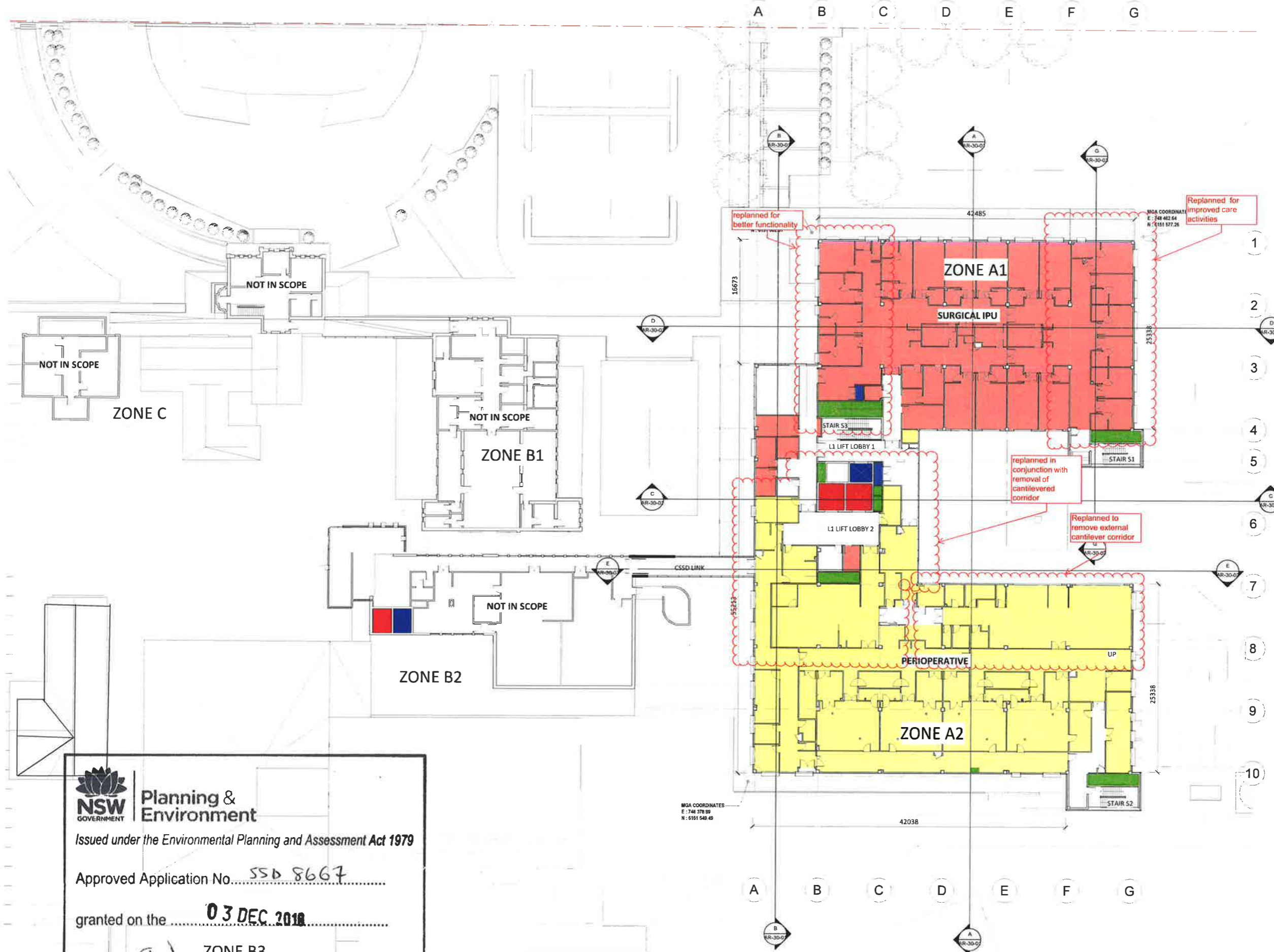
FIGURE DIMENSIONS SHALL TAKE PRECEDENCE OVER SCALE. CONTRACTORS MUST VERIFY ALL DIMENSIONS ON SITE BEFORE COMMENCING ANY WORK OR SHOP DRAWINGS. ALL DIMENSIONS AND DISCREPANCIES TO BE REPORTED TO peckvonharte@NSW.GOV.AU IMMEDIATELY. THIS DRAWING IS PROTECTED BY COPYRIGHT. THIS DRAWING IS ISSUED SUBJECT TO THE peckvonharte@NSW.GOV.AU DISCLAIMER AVAILABE ON OUR WEBSITE. © 2018 peckvonharte@NSW.GOV.AU

NSW GOVERNMENT **Planning & Environment**
 Issued under the Environmental Planning and Assessment Act 1979

Approved Application No. SSD 8667
 granted on the 03 DEC 2018

Signed SW

Sheet No. 4 of 27



Rev	Date	Description	Drawn	Check
A	05.04.18	FOR REVIEW	AIL	MSK
B	06.06.18	50% Design Documentation Issue		
C	19.06.18	Issue for Coordination		
D	25.06.18	Issue for Coordination		
E	06.07.18	Issue for Coordination		
F	20.07.18	Issue for Coordination		
G	27.07.18	Issue for review		
H	04.08.18	Issue for Coordination		
J	23.08.18	ISSUE FOR TENDER		

DEPARTMENT LEGEND

- ELEC
- Inpatient Unit (20 Surgical + 8 Medical)
- Perioperative Unit
- RISER

PROJECT MANAGER
TSA MANAGEMENT
 Level 15, 207 Kent Street
 Sydney NSW 2000
 T +61 2 9276 1400



CLIENT
NSW HI
 14/77 Pacific Hwy
 North Sydney NSW 2060
 T +61 2 9276 1400
 www.hinfra.health.nsw.gov.au



Level 20, 25 Bligh Street
 Sydney NSW 2000
 T +61 2 9232 6969
 F +61 2 9232 6979
 E sydney@pvh.com.au
 ABN 59 453 647 626

PROJECT
GOULBURN HOSPITAL & HEALTH SERVICE REDEVELOPMENT

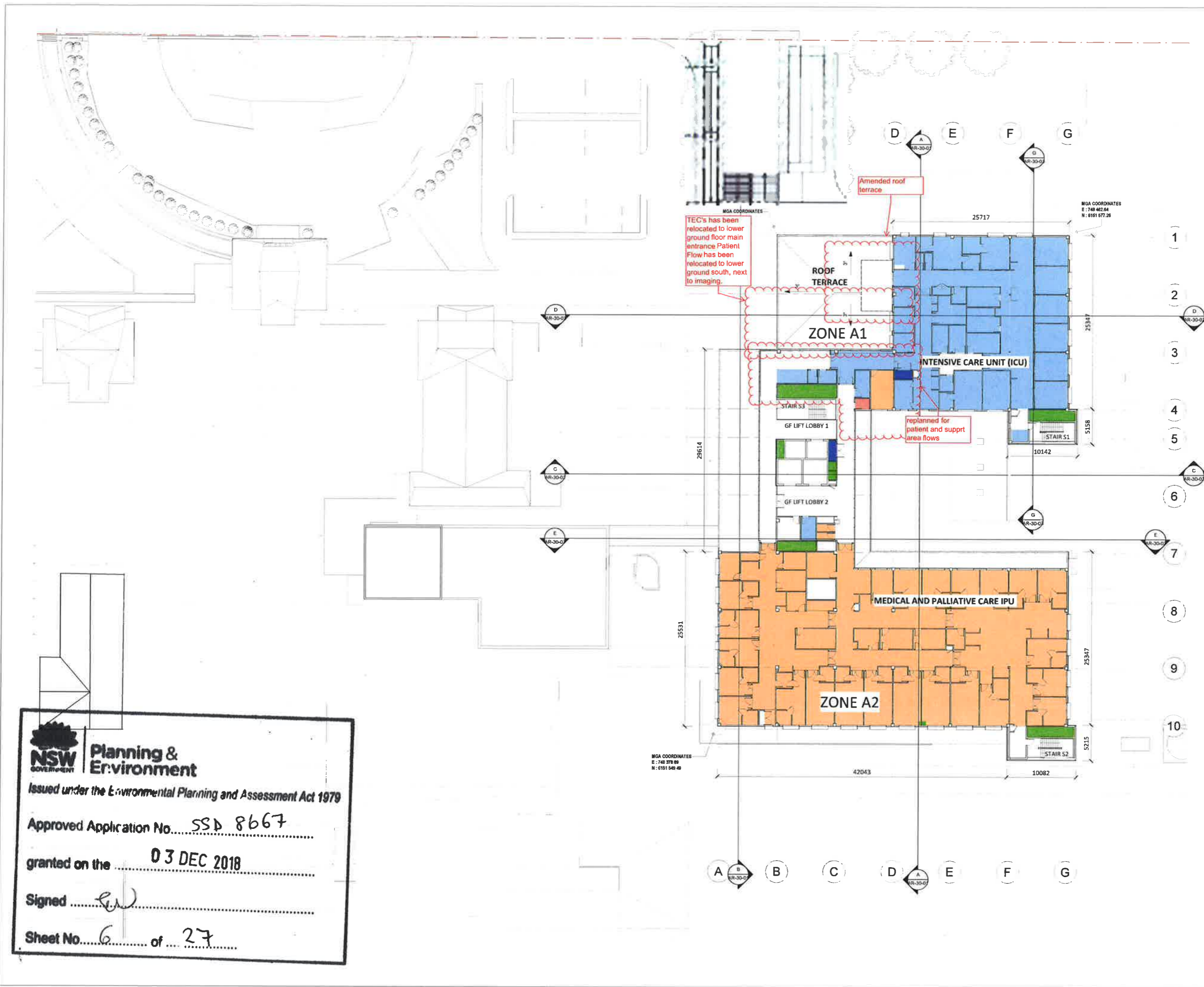
DRAWING TITLE
PRECINCT PLAN - LEVEL 1

SCALE
 1 : 250 @ A1

NOT TO BE USED FOR CONSTRUCTION		
DRAWN BY	APPROVED	
JCS	MSK	
PROJECT	DRAWING	REV
4703	AR-10-03	J

FIGURED DIMENSIONS SHALL TAKE PRECEDENCE OVER SCALE. CONTRACTORS MUST VERIFY ALL DIMENSIONS ON SITE BEFORE COMMENCING ANY WORK OR SHOP DRAWINGS. ALL DIMENSIONS AND DISCREPANCIES TO BE REPORTED TO peckvonnartel IMMEDIATELY. THIS DRAWING IS ISSUED SUBJECT TO THE peckvonnartel DATA DISCLAIMER AVAILABLE ON OUR WEBSITE AT <http://www.pvh.com.au/foiandtender>

NSW GOVERNMENT | **Planning & Environment**
 Issued under the Environmental Planning and Assessment Act 1979
 Approved Application No. SSD 8667
 granted on the 03 DEC 2018
 Signed [Signature] ZONE B3
 Sheet No. 5 of 27



Rev	Date	Description	Drn	CHK
A	05.04.18	FOR REVIEW	AL	MSK
B	06.06.18	50% Design Documentation Issue		
C	19.06.18	Issue for Coordination		
D	25.06.18	Issue for Coordination		
E	06.07.18	Issue for Coordination		
F	20.07.18	Issue for Coordination		
G	27.07.18	Issue for review		
H	03.08.18	Issue for Coordination		
J	23.08.18	ISSUE FOR TENDER		

DEPARTMENT LEGEND

- ELEC
- Inpatient Unit (20 Surgical + 8 Medical)
- Inpatient Unit with 4 Palliative Care Suites
- Intensive Care Unit (4 ICU & 6 HDU Beds)
- RISER

PROJECT MANAGER
TSA MANAGEMENT
 Level 15, 207 Kent Street
 Sydney NSW 2000
 T +61 2 9276 1400

CLIENT
NSW HI
 14/77 Pacific Hwy
 North Sydney NSW 2060
 T +61 2 9276 1400
www.hinfra.health.nsw.gov.au

Level 20, 25 Bligh Street
 Sydney NSW 2000
 T +61 2 9232 6969
 F +61 2 9232 6979
 E sydney@pvh.com.au
 ABN 59 453 647 626

PROJECT
GOULBURN HOSPITAL & HEALTH SERVICE REDEVELOPMENT

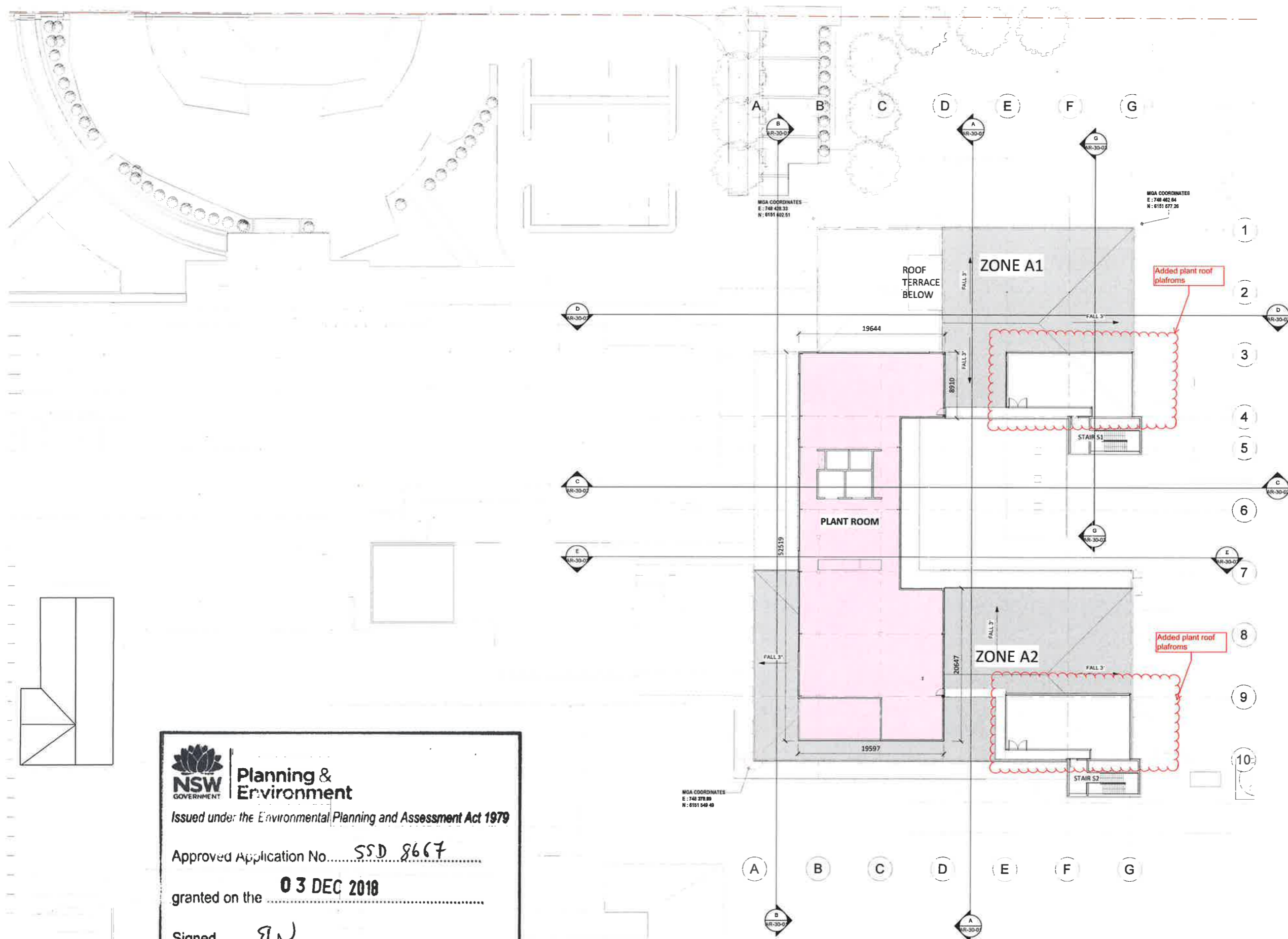
DRAWING TITLE
PRECINCT PLAN - LEVEL 2

SCALE
 1:250 @ A1

NOT TO BE USED FOR CONSTRUCTION		
DRAWN BY	APPROVED	
JCS	MSK	
PROJECT	DRAWING	REV
4703	AR-10-04	J

FIGURED DIMENSIONS SHALL TAKE PRECEDENCE OVER SCALE. CONTRACTORS MUST VERIFY ALL DIMENSIONS ON SITE BEFORE COMMENCING ANY WORK OR SHOP DRAWINGS. ALL DIMENSIONS AND DISCREPANCIES TO BE REPORTED TO peckvonharte IMMEDIATELY. THIS DRAWING IS PROTECTED BY COPYRIGHT. THIS DRAWING IS ISSUED SUBJECT TO THE peckvonharte DATA DISCLAIMER AVAILABLE ON OUR WEBSITE AT <http://www.pvh.com.au/data-disclaimer>

NSW GOVERNMENT Planning & Environment
 Issued under the Environmental Planning and Assessment Act 1979
 Approved Application No. SSD 8667
 granted on the 03 DEC 2018
 Signed [Signature]
 Sheet No. 6 of 27



Rev	Date	Description	Drawn	Check
A	05.04.18	FOR REVIEW	AIL	MSK
B	06.06.18	50% Design Documentation Issue		
C	19.06.18	Issue for Coordination		
D	25.06.18	Issue for Coordination		
E	06.07.18	Issue for Coordination		
F	20.07.18	Issue for Coordination		
G	27.07.18	Issue for review		
H	03.08.18	Issue for Coordination		
I	23.08.18	ISSUE FOR TENDER		

DEPARTMENT LEGEND

- Non Clinical Support
- Plant Room
- RISER

PROJECT MANAGER
TSA MANAGEMENT
 Level 15, 307 Kent Street
 Sydney NSW 2000
 T +61 2 9276 1400



CLIENT
NSW HI
 14/77 Pacific Hwy
 North Sydney NSW 2060
 T +61 2 9276 1400
www.hinfra.health.nsw.gov.au



peckvohartel
 Level 20, 25 Bligh Street
 Sydney NSW 2000
 T +61 2 9232 6969
 F +61 2 9232 6979
 E sydney@pvh.com.au
 ABN 59 453 647 626

PROJECT
GOULBURN HOSPITAL & HEALTH SERVICE REDEVELOPMENT

DRAWING TITLE
PRECINCT PLAN - LEVEL 3

SCALE
 1 : 250 @ A1

NOT TO BE USED FOR CONSTRUCTION		
DRAWN BY	APPROVED	
JCS	MSK	
PROJECT	DRAWING	REV
4703	AR-10-05	J

FIGURED DIMENSIONS SHALL TAKE PRECEDENCE OVER SCALE. CONTRACTORS MUST VERIFY ALL DIMENSIONS ON SITE BEFORE COMMENCING ANY WORK OR SHOP DRAWINGS. ALL DIMENSIONS AND DISCREPANCIES TO BE REPORTED TO peckvohartel IMMEDIATELY. THIS DRAWING IS PROTECTED BY COPYRIGHT. THIS DRAWING IS ISSUED SUBJECT TO THE peckvohartel DATA DISCLAIMER AVAILABLE ON OUR WEBSITE AT <http://www.peckvohartel.com.au/Disclaimer>

Planning & Environment

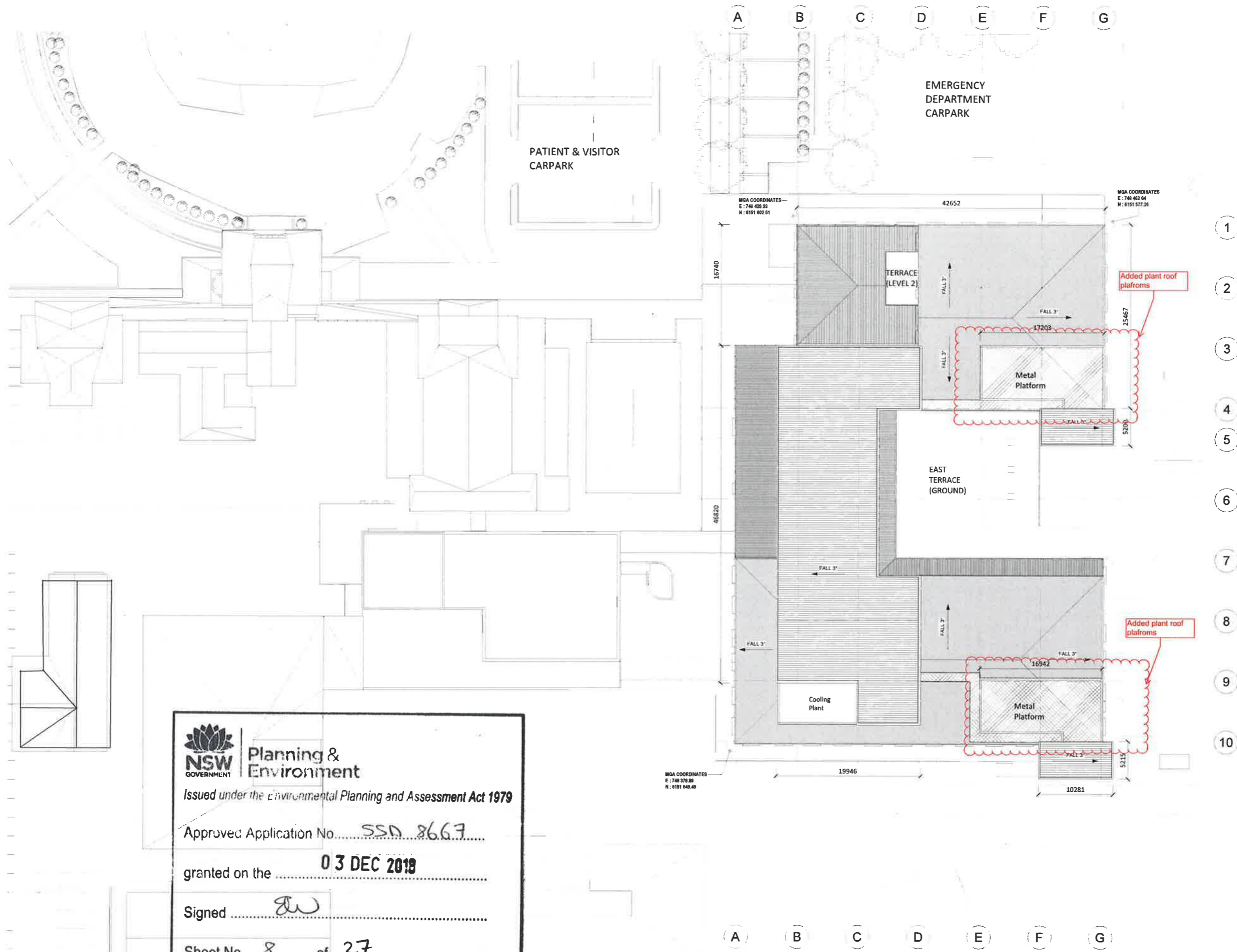
Issued under the Environmental Planning and Assessment Act 1979

Approved Application No. SSD 8667

granted on the **03 DEC 2018**

Signed EW

Sheet No. 7 of 27



Rev	Date	Description	Desn	Chk
A	06.07.18	Issue for Coordination		
B	20.07.18	Issue for Coordination		
C	27.07.18	Issue for review		
D	03.08.18	Issue for Coordination		
E	10.08.18	Issue for Coordination		
F	23.08.18	ISSUE FOR TENDER		

PROJECT MANAGER
TSA MANAGEMENT
 Level 15, 207 Kent Street
 Sydney NSW 2000
 T +61 2 9276 1400



CLIENT
NSW HI
 14/77 Pacific Hwy
 North Sydney NSW 2060
 T +61 2 9276 1400
 www.hinfra.health.nsw.gov.au



peckvohartel
 Level 20, 25 Bligh Street
 Sydney NSW 2000
 T +61 2 9232 6969
 F +61 2 9232 6979
 E sydney@pvh.com.au
 ABN 59 453 647 626

PROJECT
GOULBURN HOSPITAL & HEALTH SERVICE REDEVELOPMENT

DRAWING TITLE
PRECINCT PLAN - ROOF

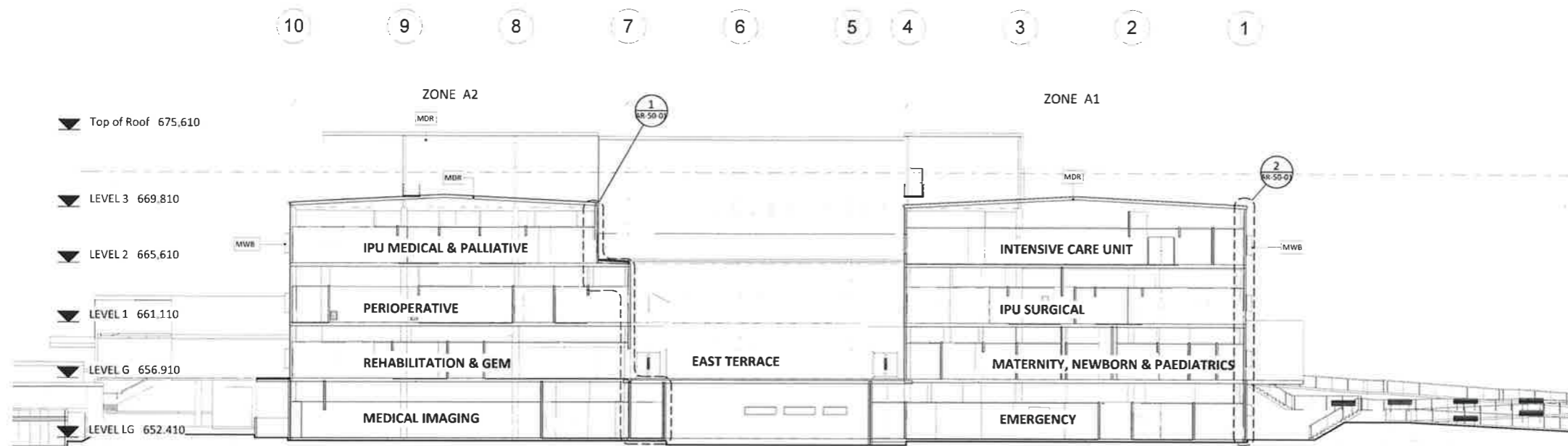
SCALE
 1 : 250 @ A1



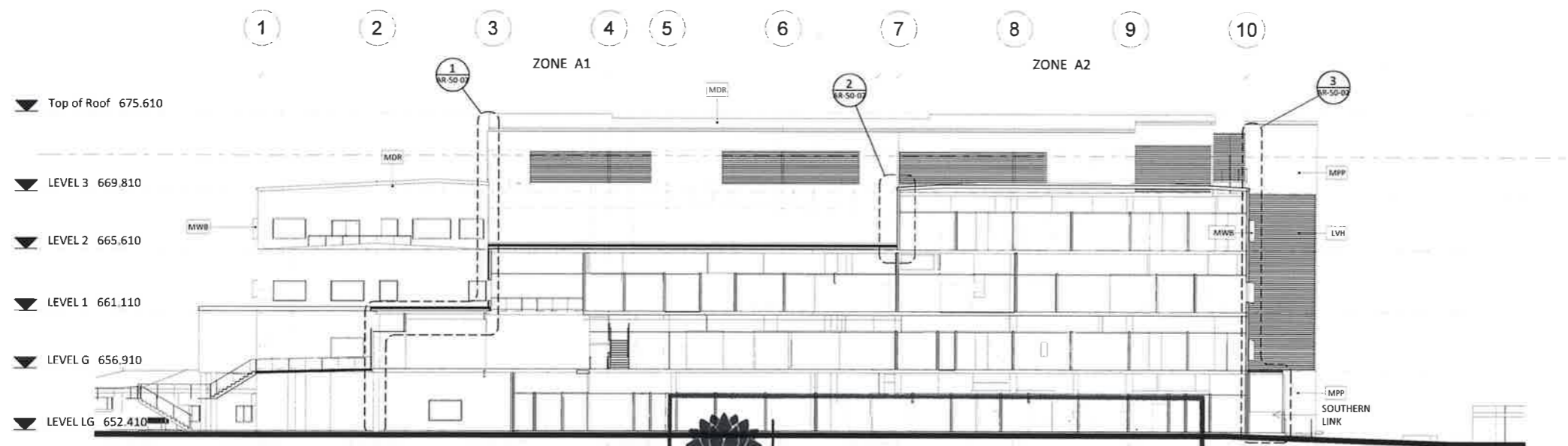
NOT TO BE USED FOR CONSTRUCTION		
DRAWN BY	APPROVED	
Author	Approver	
PROJECT	DRAWING	REV
4703	AR-10-06	F

FIGURED DIMENSIONS SHALL TAKE PRECEDENCE OVER SCALE. CONTRACTORS MUST VERIFY ALL DIMENSIONS ON SITE BEFORE COMMENCING ANY WORK ON SHOP DRAWINGS. ALL DIMENSIONS AND DISCREPANCIES TO BE REPORTED TO peckvohartel IMMEDIATELY. THIS DRAWING IS PROTECTED BY COPYRIGHT. THIS DRAWING IS ISSUED SUBJECT TO THE peckvohartel DATA DISCLAIMER AVAILABLE ON OUR WEBSITE AT <http://www.peckvohartel.com.au/data-disclaimer>

 **Planning & Environment**
 Issued under the Environmental Planning and Assessment Act 1979
 Approved Application No. SSA 8667
 granted on the 03 DEC 2019
 Signed [Signature]
 Sheet No. 8 of 27



Section A
1:200



Section B
1:200

NSW GOVERNMENT Planning & Environment
 Issued under the Environmental Planning and Assessment Act 1979
 Approved Application No. SSD 8667
 granted on the 03 DEC 2018
 Signed [Signature]
 Sheet No. 9 of 27

EXTERNAL FINISHES:



ALS ALUMINUM CLADDING TO MAIN AWNING SOFFIT



CFC CFC PANEL TO UPPER LEVELS



FBW FACEBRICK WALL TO LOWER GROUND (from PGH Bricks or equivalent)



GLT TINTED GLAZING WINDOW



LWH HORIZONTAL ACOUSTIC LOUVERS (Weather Resistant)



MPP PERFORATED METAL PANEL



MDR METAL DECK ROOFING



MWB ALUMINUM WINDOW BOX

Rev	Date	Description	Dim	Chk
A	06.06.18	50% Design Documentation Issue		
B	25.06.18	Issue for Coordination		
C	06.07.18	Issue for Coordination		
D	20.07.18	Issue for Coordination		
E	27.07.18	Issue for review		
F	03.08.18	Issue for Coordination		
G	10.08.18	Issue for Coordination - Plant Room Louvers revised to match Eng's drawings		
H	23.08.18	ISSUE FOR TENDER		

PROJECT MANAGER
 TSA MANAGEMENT
 Level 15, 207 Kent Street
 Sydney NSW 2000
 T +61 2 9276 1400

CLIENT
 NSW HI
 14/77 Pacific Hwy
 North Sydney NSW 2060
 T +61 2 9276 1400
 www.hinfra.health.nsw.gov.au

Level 20, 25 Bligh Street
 Sydney NSW 2000
 T +61 2 9232 6969
 F +61 2 9232 6979
 E sydney@pvh.com.au
 ABN 59 453 647 626

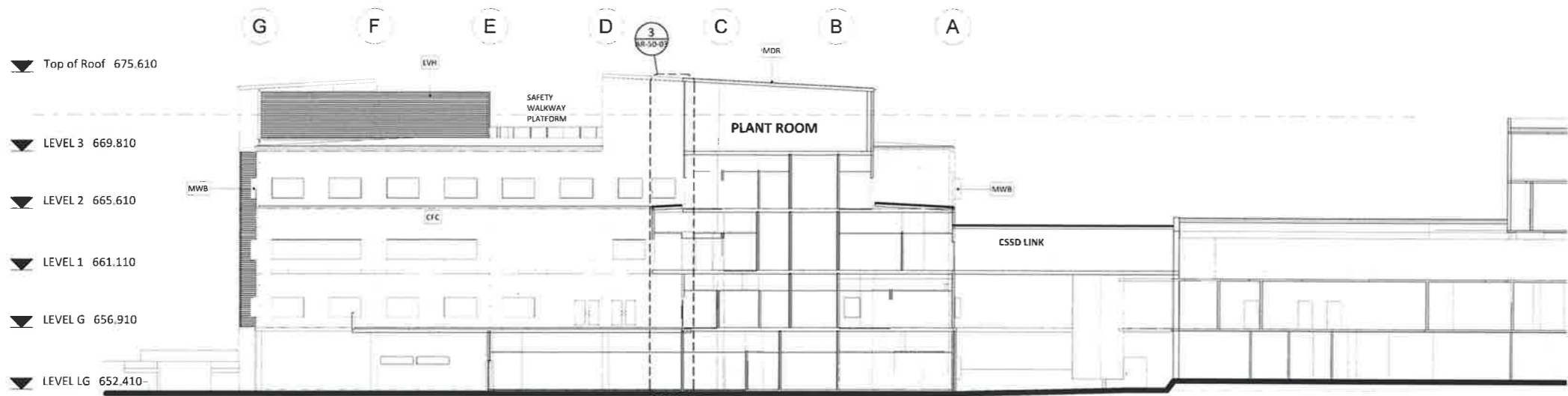
PROJECT
 GOULBURN HOSPITAL & HEALTH
 SERVICE REDEVELOPMENT

DRAWING TITLE
 SECTIONS AA & BB

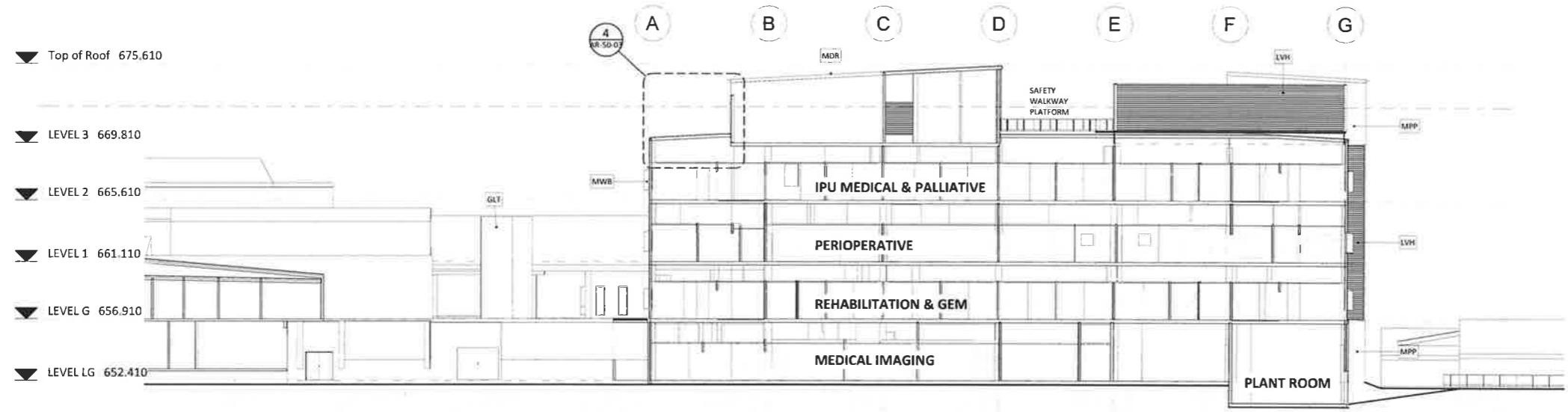
SCALE
 1:200 @ A1

NOT TO BE USED FOR CONSTRUCTION		
DRAWN BY	APPROVED	
Author	Approver	
4703	AR-30-01	H

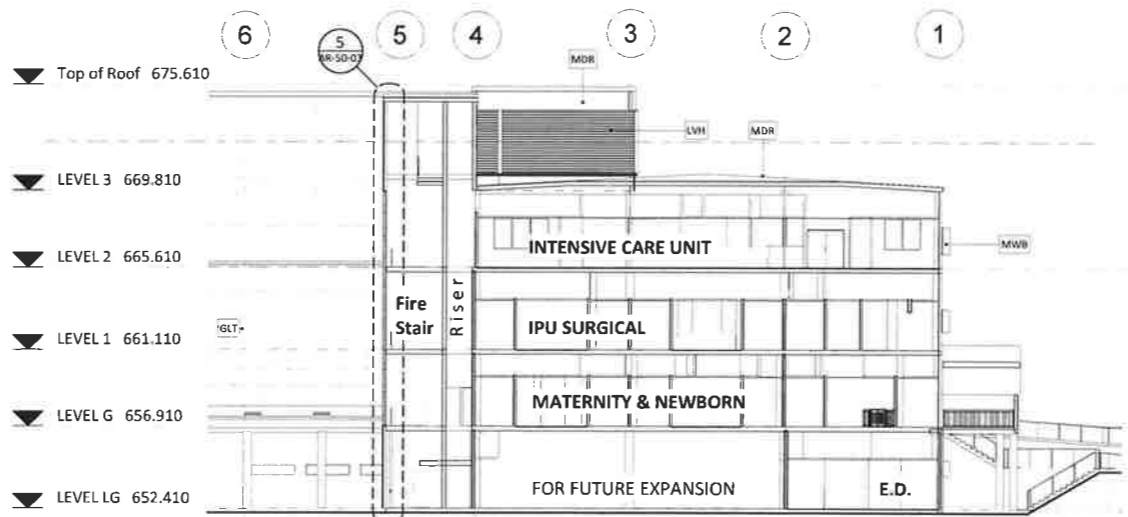
FIGURED DIMENSIONS SHALL TAKE PRECEDENCE OVER SCALE. CONTRACTORS MUST VERIFY ALL DIMENSIONS ON SITE BEFORE COMMENCING ANY WORK ON SHOP DRAWINGS. ALL OMISSIONS AND DISCREPANCIES TO BE REPORTED TO peckvonthor@nsw.gov.au IMMEDIATELY. THIS DRAWING IS PROTECTED BY COPYRIGHT. THIS DRAWING IS SUBJECT TO THE peckvonthor DATA DISCLOSURE AVAILABLE ON OUR WEBSITE AT <http://www.pvh.com.au/peckvonthor>



E Section E
1:200



F Section F
1:200



G Section G
1:200

EXTERNAL FINISHES:



ALS ALUMINUM CLADDING TO MAIN AWNING SOFFIT



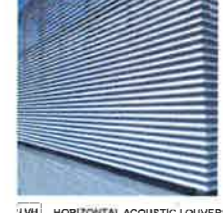
CFC CFC PANEL TO UPPER LEVELS



FBW FACEBRICK WALL TO LOWER GROUND (from PGH Bricks or equivalent)



GLT TINTED GLAZING WINDOW



LWH HORIZONTAL ACOUSTIC LOUVERS (Weather Resistant)



MPP PERFORATED METAL PANEL



MDR METAL DECK ROOFING



MWB ALUMINUM WINDOW BOX

Rev	Date	Description	Des	Chk
A	06.06.18	SDK Design Documentation Issue		
B	25.06.18	Issue for Coordination		
C	06.07.18	Issue for Coordination		
D	20.07.18	Issue for Coordination		
E	27.07.18	Issue for review		
F	03.08.18	Issue for Coordination		
G	10.08.18	Issue for Coordination: Plant Room Louvers revised to match Eng's drawings		
H	23.08.18	ISSUE FOR TENDER		

PROJECT MANAGER
TSA MANAGEMENT
 Level 15, 207 Kent Street
 Sydney NSW 2000
 T +61 2 9276 3400



CLIENT
 NSW HI
 14/77 Pacific Hwy
 North Sydney NSW 2060
 T +61 2 9232 6979
 www.hinfra.health.nsw.gov.au



Level 20, 25 Bligh Street
 Sydney NSW 2000
 T +61 2 9232 6969
 F +61 2 9232 6979
 E sydney@pvh.com.au
 ABN 59 453 647 626

PROJECT
GOULBURN HOSPITAL & HEALTH SERVICE REDEVELOPMENT

DRAWING TITLE
SECTIONS EE, FF & GG

SCALE
 1:200 @ A1

NOT TO BE USED FOR CONSTRUCTION		
DRAWN BY	APPROVED	
Author	Approver	
PROJECT	DRAWING	REV
4703	AR-30-03	H

FIGURED DIMENSIONS SHALL TAKE PRECEDENCE OVER SCALE. CONTRACTORS MUST VERIFY ALL DIMENSIONS ON SITE BEFORE COMMENCING ANY WORK OR SHOP DRAWINGS. ALL OMISSIONS AND DISCREPANCIES TO BE REPORTED TO peckvonharte IMMEDIATELY. THIS DRAWING IS PROTECTED BY COPYRIGHT. THIS DRAWING IS ISSUED SUBJECT TO THE peckvonharte DATA DISCLAIMER AVAILABLE ON OUR WEBSITE AT <http://www.pvh.com.au/data-disclaimer>

Planning & Environment
 Issued under the Environmental Planning and Assessment Act 1979
 Approved Application No.....SSD 8667.....
 granted on the **03 DEC 2018**
 Signed
 Sheet No.....11..... of 27.....



1 NORTH ELEVATION
1:250



2 SOUTH ELEVATION
1:250

EXTERNAL FINISHES:



Issued under the Environmental Planning and Assessment Act 1979

Approved Application No.....SSB 8667

granted on the03 DEC 2018

SignedEW

Sheet No.....12 of 27

REVISIONS

Rev	Date	Description	By	CHK
-----	------	-------------	----	-----

PROJECT MANAGER
TSA MANAGEMENT
Level 15, 207 Kent Street
Sydney NSW 2000
T +61 2 9276 1400

CLIENT
NSW HI
14/77 Pacific Hwy
North Sydney NSW 2060
T +61 2 9276 1400
www.hinfra.health.nsw.gov.au

Level 20, 25 Bligh Street
Sydney NSW 2000
T +61 2 9232 6969
F +61 2 9232 6979
E sydney@pvh.com.au
ABN 59 453 647 626

PROJECT
GOULBURN HOSPITAL & HEALTH
SERVICE REDEVELOPMENT

DRAWING TITLE
SSDA Report - ELEVATION
NORTH & SOUTH

SCALE
1:250 @ A1

DRAWN BY Author	APPROVED Approver
PROJECT 4703	DRAWING AR-21-01

FIGURED DIMENSIONS SHALL TAKE PRECEDENCE OVER SCALE. CONTRACTORS MUST VERIFY ALL DIMENSIONS ON SITE BEFORE COMMENCING ANY WORK OR SHOP DRAWINGS. ALL OMISSIONS AND DISCREPANCIES TO BE REPORTED TO pvh.com.au IMMEDIATELY. THIS DRAWING IS PROTECTED BY COPYRIGHT. THIS DRAWING IS ISSUED SUBJECT TO THE pvh.com.au AND DATA DISCLAIMER AVAILABLE ON OUR WEBSITE AT <http://www.pvh.com.au/DataDisclaimer>

- ▼ Top of Roof 675.610
- ▼ LEVEL 3 669.810
- ▼ LEVEL 2 665.610
- ▼ LEVEL 1 661.110
- ▼ LEVEL G 656.910
- ▼ LEVEL LG 652.410



1 EAST ELEVATION
1:250

- ▼ Top of Roof 675.610
- ▼ LEVEL 3 669.810
- ▼ LEVEL 2 665.610
- ▼ LEVEL 1 661.110
- ▼ LEVEL G 656.910



2 WEST ELEVATION
1:250

NSW GOVERNMENT Planning & Environment
 Issued under the Environmental Planning and Assessment Act 1979
 Approved Application No. SSD 8667
 granted on the 03 DEC 2018
 Signed [Signature]
 Sheet No. 13 of 27



EXTERNAL FINISHES:

REVISIONS

Rev	Date	Description	Dim	Chk

PROJECT MANAGER
 TSA MANAGEMENT
 Level 15, 207 Kent Street
 Sydney NSW 2000
 T +61 2 9276 1400

CLIENT
 NSW HI
 14/77 Pacific Hwy
 North Sydney NSW 2060
 T +61 2 9276 1400
 www.hinfra.health.nsw.gov.au

Health Infrastructure

Level 20, 25 Bligh Street
 Sydney NSW 2000
 T +61 2 9232 6969
 F +61 2 9232 6979
 E sydney@pvh.com.au
 ABN 59 453 647 626

PROJECT
 GOULBURN HOSPITAL & HEALTH SERVICE REDEVELOPMENT

DRAWING TITLE
 SSSA Report - ELEVATION EAST & WEST

SCALE
 1:250 @ A1

DRAWN BY
 Author

APPROVED
 Approver


PROJECT
 4703

DRAWING
 AR-21-02

REV

FIGURED DIMENSIONS SHALL TAKE PRECEDENCE OVER SCALE. CONTRACTORS MUST VERIFY ALL DIMENSIONS ON SITE BEFORE COMMENCING ANY WORK OR SHOP DRAWINGS. ALL DIMENSIONS AND DISCREPANCIES TO BE REPORTED TO peckvohartel IMMEDIATELY. THIS DRAWING IS PROTECTED BY COPYRIGHT. THIS DRAWING IS ISSUED SUBJECT TO THE peckvohartel DATA DISCLAIMER AVAILABLE ON OUR WEBSITE AT <http://www.pvh.com.au/Disclaimer>

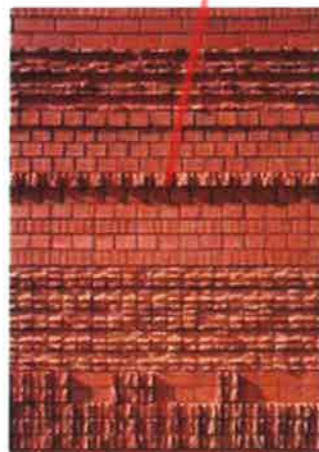



NSW Government
Planning & Environment
 Issued under the Environmental Planning and Assessment Act 1979
 Approved Application No. SSD 8667
 granted on the 03 DEC 2018
 Signed [Signature]
 Sheet No. 14 of 27

CFC PANEL OPTION



CFC PANELS ON UPPER LEVELS



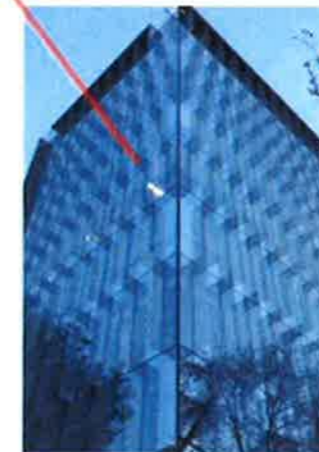
LOCALLY SOURCED BRICKS WITH PATTERN TO PROVIDE TEXTURE



VERTICAL METAL SUPPORT



ALUMINUM CLADDING PROFILE FOR UNDERSIDE OF CANOPY



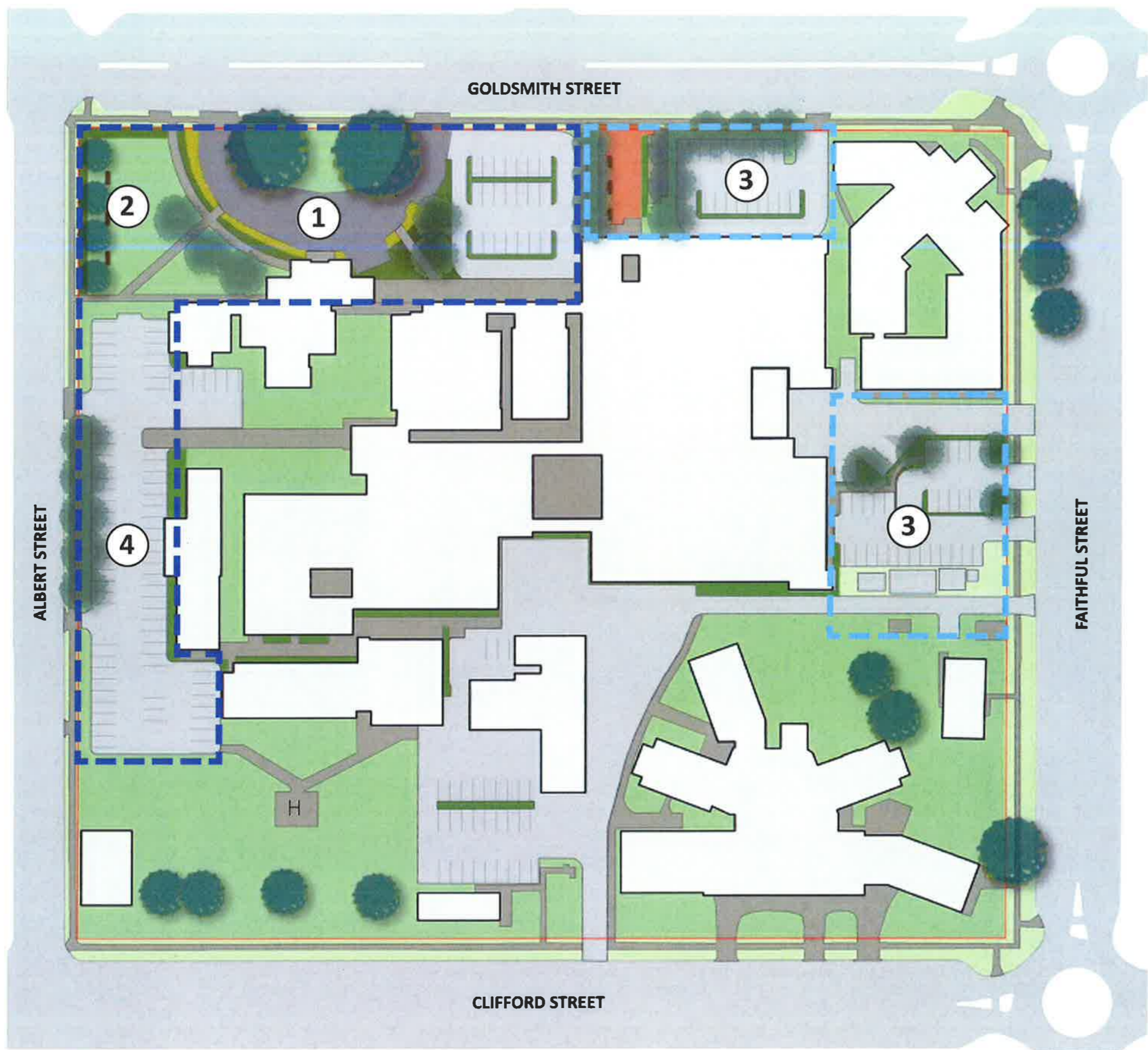
TINTED GLAZING









PERFORATED ALUMINUM PANEL AT FIRE STAIRS LOWER GROUND + LEVEL 3, & ROOFTOP PLANTROOM AREAS


FOR APPROVAL
NOT TO BE USED FOR CONSTRUCTION

project 4703 date 21/09/18
 drawing OPTION 1 revision 14



-  GRASSING
-  EXISTING TREES
-  PROPOSED TREES
-  CARPARK PLANTING
-  EXTENT OF MAIN LANDSCAPE WORKS
-  EXTENT OF FINAL LANDSCAPE WORKS

- 1** FORMAL ENTRY PROPOSED TO HERITAGE BUILDING, INCLUDING:
 - GOULBURN ROSE PLANTINGS TO DRIVEWAY PERIMETER
 - NEW PEDESTRIAN PATHS
 - EXISTING CEDRUS TREES RETAINED
- 2** FORMAL LAWN AREA WITH LOW HEDGE PLANTING TO BOUNDARY AND SEATING
- 3** SCREEN TREE, SHRUB AND GROUNDCOVER PLANTING TO NEW CARPARKS FOR SHADE AND SCREENING TO BUILDING
- 4** SCREEN TREE, SHRUB AND GROUNDCOVER PLANTING TO NEW CARPARK


NSW Planning & Environment
 GOVERNMENT

Issued under the Environmental Planning and Assessment Act 1979
 Approved Application No. SSD 8667
 granted on the 03 DEC 2018
 Signed EW
 Sheet No. 15 of 27
 DRAWING No. SKP-001
 REV H
 DATE 30.08.2018
 PROJECT No 17-1291



WESTRINGIA FRUITICOSA 'ROSEMARY' - ALL CARPARKS



CALLISTEMON 'LITTLE JOHN' - ALL CARPARKS



LOMANDRA TANIKA - ALL CARPARKS



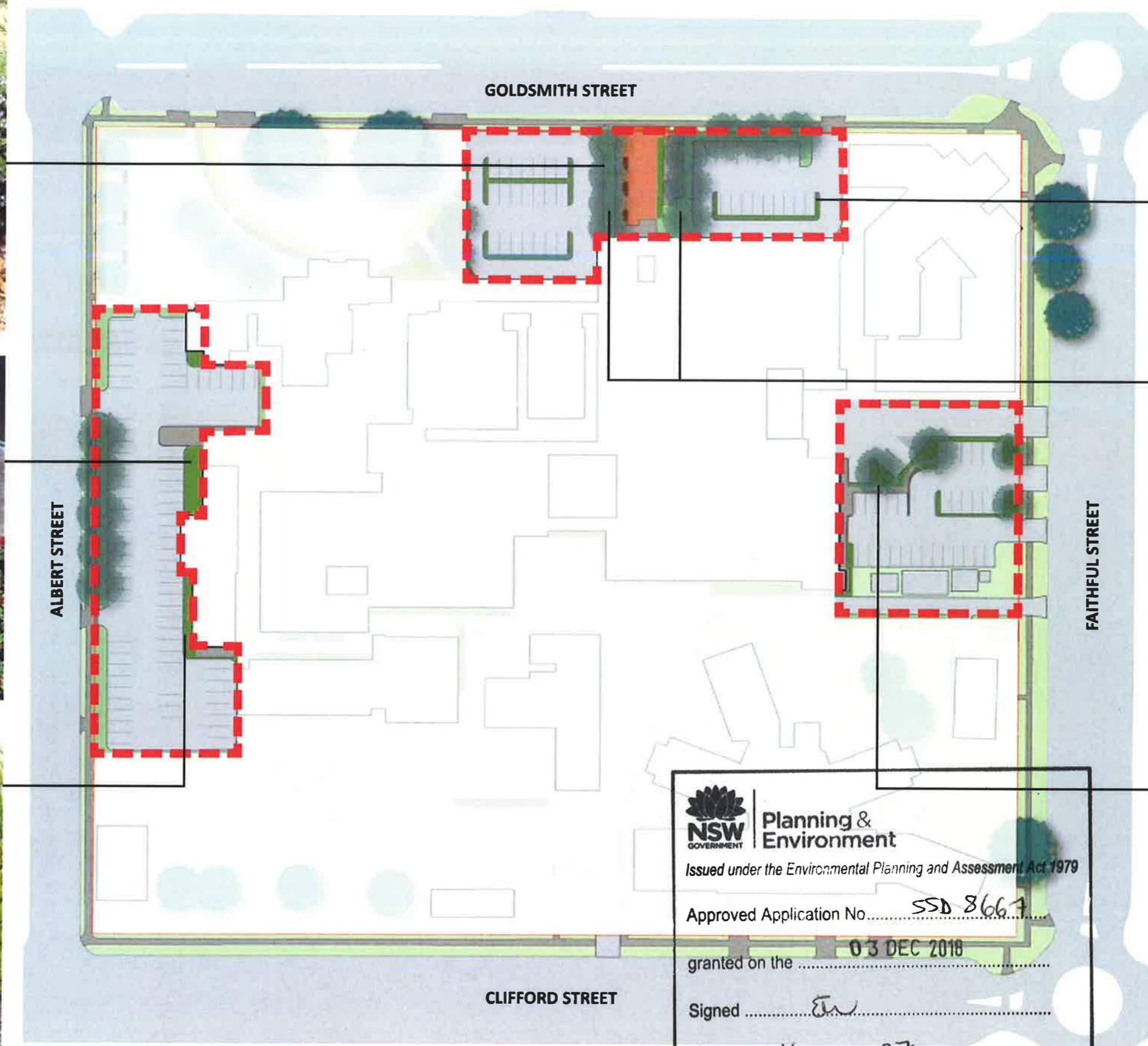
MYOPORUM 'CREEPING BOOBIALA' - ALL CARPARKS



LAGERSTROEMIA 'CREPE MRYTLE' - FEATURE TREE TO GOLDSMITH ENTRY



ULMUS PARVIFOLIA 'CHINESE ELM' - SCREEN TREE TO ALL NEW CARPARKS



NSW GOVERNMENT | **Planning & Environment**
 Issued under the Environmental Planning and Assessment Act 1979
 Approved Application No. SSD 8667
 granted on the 03 DEC 2018
 Signed [Signature]
 Sheet No. 16 of 27



GOULBURN ROSE - TO EXISTING CIRCULAR DRIVEWAY



HEDGE TO ALBERT AND GOLDSMITH ST BOUNDARIES



HERITAGE SEATING TO LAWN AREA



CAMELLIA PLANTING TO FRONT OF HERITAGE BUILDING

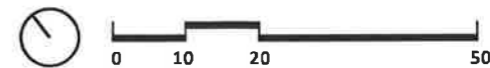


NSW GOVERNMENT | **Planning & Environment**
 Issued under the Environmental Planning and Assessment Act 1979
 Approved Application No. SSD 8667
 granted on the 03 DEC 2018
 Signed [Signature]
 Sheet No. 17 of 27

GOULBURN HOSPITAL REVITALISATION
HERITAGE ENTRY

peckvonhartel yad
 CLIENT

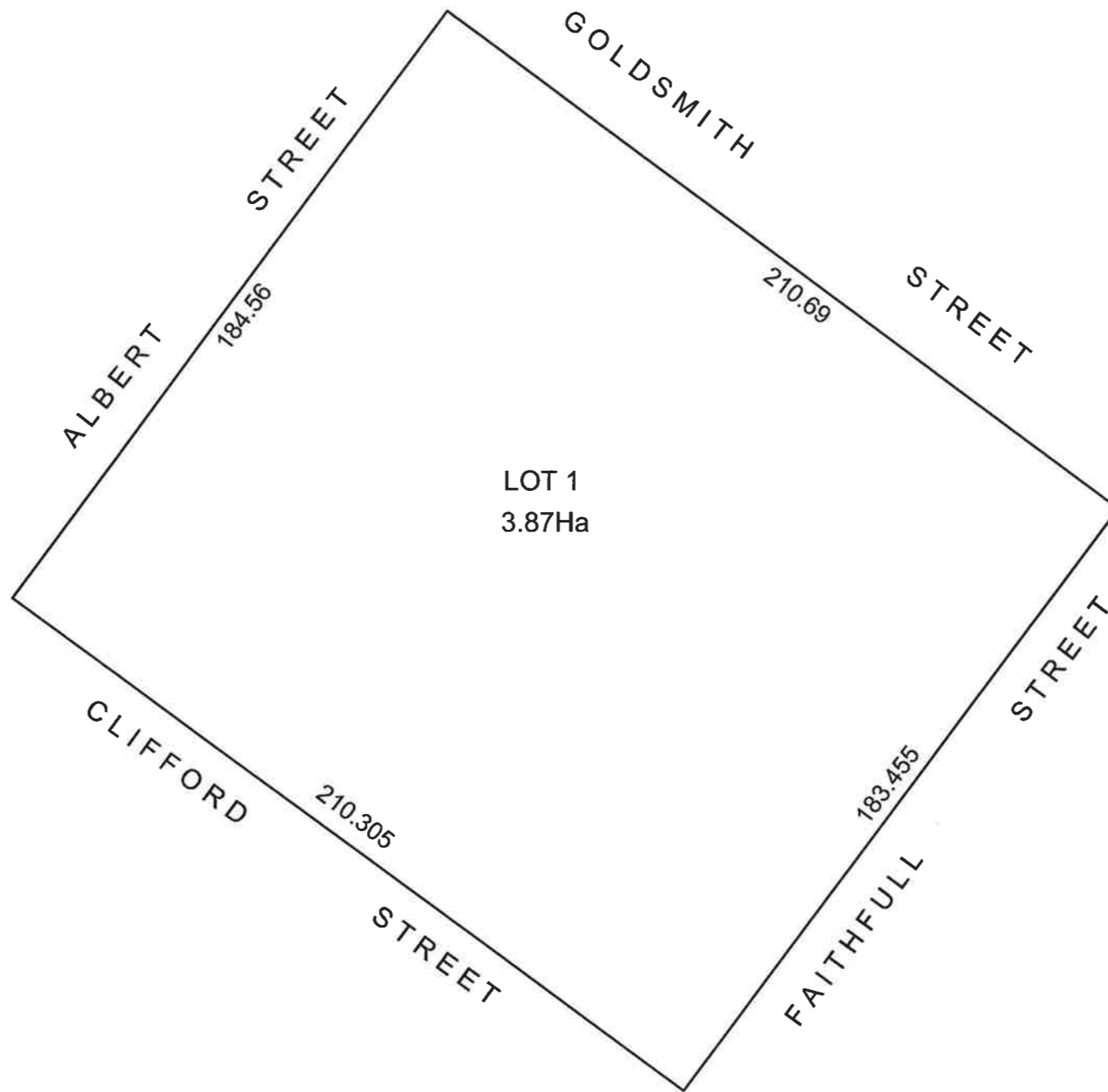
SPACE LAB
 CONSULTANT




DRAWING No SKP-001
 REV H
 DATE 30.08.2018
 PROJECT No 17-1291

PLAN SHOWING PROPOSED LOT CONSOLIDATION

LOT 1 IN DP.133606 AND LOTS 1 THROUGH 10 IN DP 758468
GOULBURN HOSPITAL



NOTE:
THIS IS A DRAFT PLAN OF CONSOLIDATION ONLY
ALL DIMENSION AND AREAS ARE SUBJECT TO FINAL SURVEY
PLEASE FURTHER NOTE THAT TITLE PLANS APPEAR TO SHOW DISCREPANCIES WITH MEASUREMENTS - USE THIS PLAN WITH CAUTION

	Planning & Environment
Issued under the Environmental Planning and Assessment Act 1979	
Approved Application No..... <u>SSD 8667</u>	
granted on the <u>03 DEC 2018</u>	
Signed <u>EW</u>	
Sheet No..... <u>18</u> of <u>27</u>	

DATE OF SURVEY: JULY 2018
REF No. B4024
SCALE 1:1500

© PROJECT SURVEYORS-2015
REPRODUCTION WITHOUT WRITTEN
APPROVAL IS STRICTLY PROHIBITED



COVER OF EXCELLENCE
Liability Limited by a Scheme
Approved under Professional
Standards Legislation

BELLA VISTA

PO Box 7419
BAULKHAM HILLS NSW 2153
SUITE 405, LEVEL 4
14 LEXINGTON DRIVE
BELLA VISTA NSW 2153
PHONE : 9056 1900
email: office@projectsurveyors.com.au
www.projectsurveyors.com.au
ABN 20 068 433 974



PROJECT SURVEYORS

Professional Innovative... Results.

SIGNAGE COLOURS



Dark Grey
 Global Signage Colour
 Typical Sign Background, Sign Text Internal
 Pantone Cool Grey 11C
 Alpolic M7991 Charcoal Solid Colour



Light Grey 2 (Internal)
 Secondary Internal Signage Background Colour
 In Directory 'You Are Here' Indicator Only
 Pantone Cool Grey 8C
 Dulux Simone Weil PG1.A4



Blue External
 External main building identification and hospital
 name header on vehicular signage.
 Dulux Bright Blue



White
 Sign messages text when on grey background
 Header panel on markers: Alpolic White M9010



Red
 Emergency Messages Background Colour
 Signal Red R13 (AS2700)
 Pantone 485 C



Blue
 Parking and Accessible Pictograms
 B21 Ultramarine (AS2700)
 Pantone 2728 C

	Planning & Environment	
	<i>Issued under the Environmental Planning and Assessment Act 1979</i>	
Approved Application No..... <u>SSD 8667</u>		
granted on the 03 DEC 2018		
Signed <u>EW</u>		
Sheet No..... <u>19</u> of <u>27</u>		

NOTE:
 These are intent drawings only
 1. Do not scale this drawing. Do not trace and do not scan.
 2. Structural design and certification by contractor/engineer.
 3. No electronic artwork supplied unless otherwise specified.
 4. Application of graphics to sign is subject to client approval.
 5. Manufacture subject to approved contractors shop drawing.
 6. Dimensions to be verified onsite by contractor.
 7. All fixings to be non-corrosive.
 8. All workmanship and materials to be strictly in accordance with current and relevant Australian Standards Codes and Local Government requirements.

© 2018 Minale Tattersfield
 No part of this work may be reproduced or altered by any process, or any other exclusive right exercised, without the permission of Minale Tattersfield Design Pty Ltd.
 35/47 Neridah Street, Chatswood, 2067.

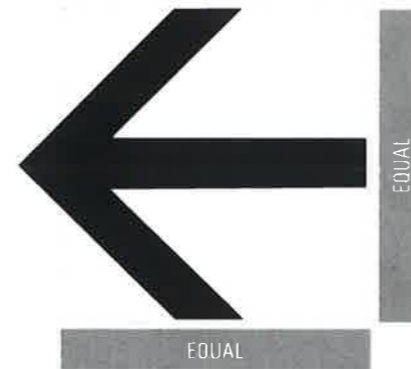
Minale Tattersfield
 Sydney | London | Paris | Milan | Moscow | Brussels

A Issued for Tender		23.08.2018	
Drawn: AB	Checked: HG	Sheet 1 of 1	Date: 23.08.2018
Client: pvh peckvonhartel Project: Goulburn Base Hospital		A3 Do not scale Dimensions in mm	
Job No. S3283	Dwg.	Issue A	Scale NTS/AS SHOWN

PICTOGRAMS



ARROWS



Arrow showing graphic set-out bounding box.

Hierarchy of Directions

1. Typical
2. Where Required
3. Typical
4. Where Required
5. Typical

NSW | Planning & Environment
GOVERNMENT

Issued under the Environmental Planning and Assessment Act 1979

Approved Application No. SSD 8667

granted on the 03 DEC 2018

Signed EW

Sheet No. 20 of 27

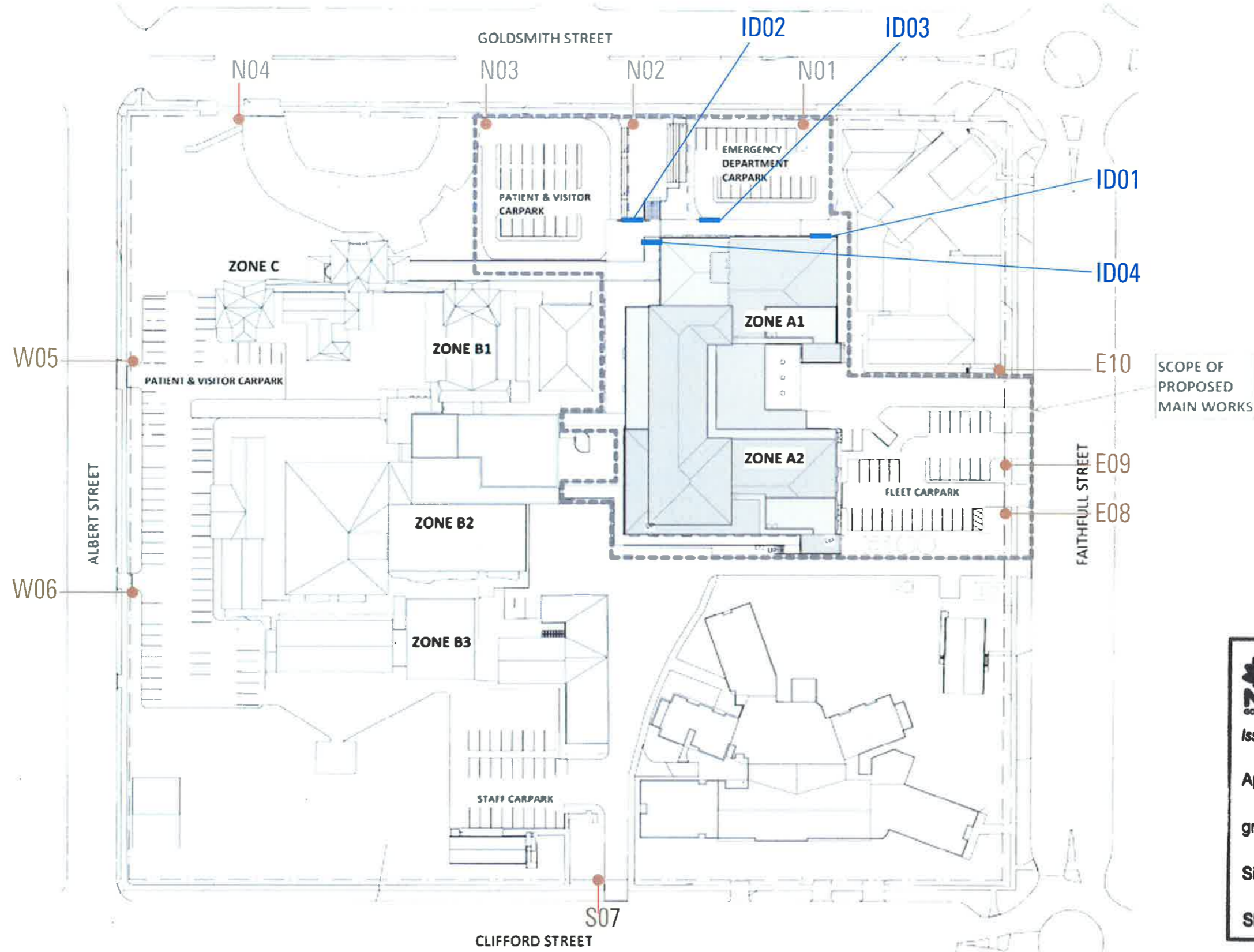
NOTE:
These are intent drawings only

1. Do not scale this drawing. Do not trace and do not scan.
2. Structural design and certification by contractor/engineer.
3. No electronic artwork supplied unless otherwise specified.
4. Application of graphics to sign is subject to client approval.
5. Manufacture subject to approved contractors shop drawing.
6. Dimensions to be verified onsite by contractor.
7. All fixings to be non-corrosive.
8. All workmanship and materials to be strictly in accordance with current and relevant Australian Standards Codes and Local Government requirements.

© 2018 Minale Tattersfield
No part of this work may be reproduced or altered by any process, or any other exclusive right exercised, without the permission of Minale Tattersfield Design Pty Ltd, 35/47 Neridah Street, Chatswood, 2067.

Minale Tattersfield
Sydney | London | Paris | Milan | Moscow | Brussels

A	Issued for Tender	23.08.2018
Drawn: AB	Checked: HG	Sheet 1 of 1
Client: pvh peckvonhartel Project: Goulburn Base Hospital		⊕ A3
		Do not scale Dimensions in mm
Job No. S3283	Dwg.	Issue A
		Scale: NTS/AS SHOWN




NSW GOVERNMENT | **Planning & Environment**
 Issued under the Environmental Planning and Assessment Act 1979
 Approved Application No.....SSD 8667.....
 granted on the03 DEC 2018.....
 SignedEW.....
 Sheet No. 21 of 27

NOTE:
 These are invent drawings only
 1. Do not scale this drawing. Do not trace and do not scan.
 2. Structural design and certification by contractor/engineer.
 3. No electronic artwork supplied unless otherwise specified.
 4. Application of graphics to sign is subject to client approval.
 5. Manufacture subject to approved contractors shop drawing.
 6. Dimensions to be verified onsite by contractor.
 7. All fixings to be non-corrosive.
 8. All workmanship and materials to be strictly in accordance with current and relevant Australian Standards Codes and Local Government requirements.

© 2018 Minale Tattersfield
 No part of this work may be reproduced or altered by any process, or any other exclusive right exercised, without the permission of Minale Tattersfield Design Pty Ltd, 35/47 Neridah Street, Chatswood, 2067.

Minale Tattersfield
 Sydney | London | Paris | Milan | Moscow | Brussels

A	Issued for Tender	23.08.2018
Drawn: AB	Checked: HG	Sheet 1 of 1
Client: pvh peckvonhartel Project: Goulburn Base Hospital		⊕ A3
Job No. S3283		Dwg. Issue A
		Do not scale Dimensions in mm
		Scale NTS/AS SHOWN

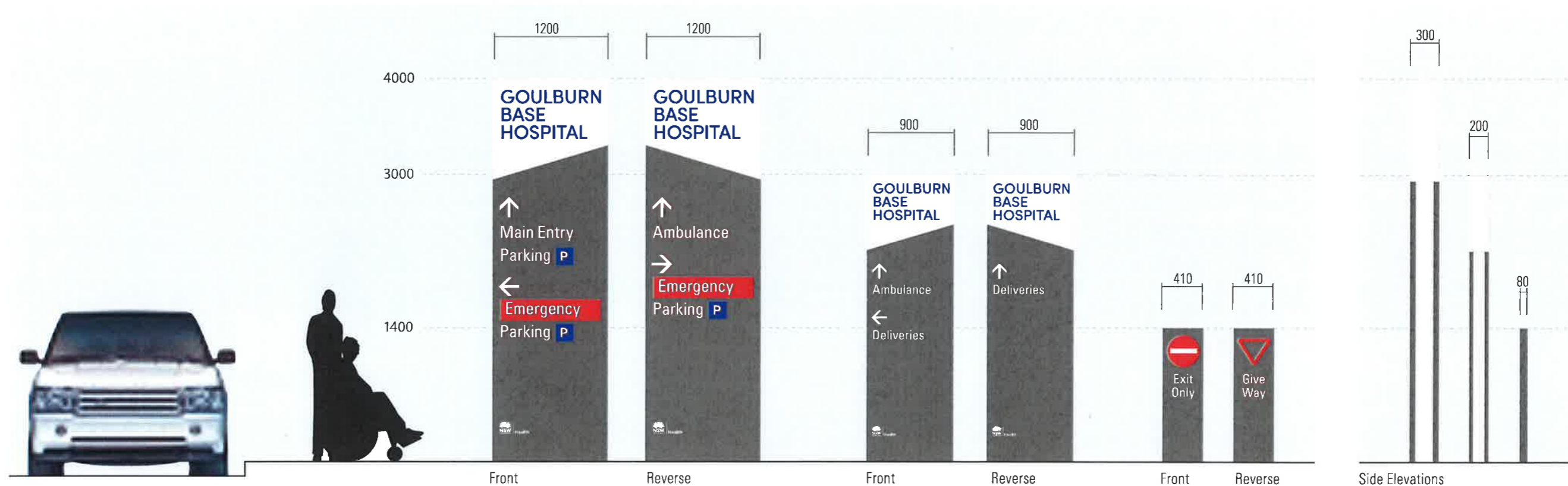

Planning & Environment
 Issued under the Environmental Planning and Assessment Act 1979
 Approved Application No. SSD 8667
 granted on the 03 DEC 2018
 Signed [Signature]
 Sheet No. 22 of 27

NOTE:

Content of signs is correct for those shown. The schedule of external signs lists all known key signs, and content will be similar to those shown on this page.

SPECIFICATIONS

See following pages.



External Vehicular Signs

Code: Varies
Dims: Varies

4M PYLON
 Code: N01, N03, W05
 H4000 x W1200mm
 Cap Height: 130mm

3M PYLON
 Code: N02, N04, W06, S07, E08, E10
 H3000 x W900mm
 Cap Height: 100mm

1.4M TOTEM
 Code: E09
 H1400 x W410mm
 Cap Height: 100mm

NOTE:

These are intent drawings only

1. Do not scale this drawing. Do not trace and do not scan.

2. Structural design and certification by contractor/engineer.

3. No electronic artwork supplied unless otherwise specified.

4. Application of graphics to sign is subject to client approval.

5. Manufacture subject to approved contractors shop drawing.

6. Dimensions to be verified onsite by contractor.

7. All fixings to be non-corrosive.

8. All workmanship and materials to be strictly in accordance with current and relevant Australian Standards Codes and Local Government requirements.

© 2016 Minale Tattersfield

No part of this work may be reproduced or altered by any process, or any other exclusive right exercised, without the permission of Minale Tattersfield Design Pty Ltd. 35/47 Neridah Street, Chatswood, 2067.

Minale Tattersfield

Sydney | London | Paris | Milan | Moscow | Brussels

A Issued for Tender		23.08.2018	
Drawn: AB	Checked: HG	Sheet 1 of 1	Date: 23.08.2018
Client: pvh peckvonhartel Project: Goulburn Base Hospital			⌀ A3
Job No. S3283			Do not scale Dimensions in mm
Dwg.	Issue A	Scale NTSIAS SHOWN	

DETAIL PLAN LOWER GROUND 26



SIGNTYPES

- External Vehicular Directional
- External Entry Identification (ID-)
- Entry Information to Main Entry (ENT1)
- Department Identification (IDI-DIW)
- Department Identification Perpendicular (IDI-DIP)
- Level Number Graphic (ID-LID)
- Level Number Graphic in Stairs (ID-LN)
- Lift Directory Public (IL-LD)
- Lift Directory Staff (IL-SL)
- Typical Room Identification (IDI-RI)
- Meeting/Consult/Interview room (IDS-DSS)
- Staff Only Sign (SO-GL / SO-SD)
- Bedroom Identification (IDI-BRM / IDI-BRS)
- Bay Identification (BI-BIR)
- Bed Identification (BI-BIW)
- Utility Identification (IDS-SS-30)
- Main Reception Identification (IDI-LRI)
- Smaller Reception Identification (IDI-SRI)
- Directional Ceiling Suspended (ID-SCS)
- Directional Above Door (ID-SWM)
- Directional Wall Mounted (ID-SW)
- Bulkhead Reception Identification (IDI-RIN)
- Stair ID Perpendicular (IL-MLP)
- Amenities Identification Perpendicular (IDI-PAI)
- Large Room ID Perpendicular (IDI-PRI-LG)
- Amenities Braille/Tactile Identification (IDS-ABT)
- Statutory General (IDS-SS-50)
- Statutory Fire Safety Door (IDS-SS-20)

CIRCULATION

- ➔ Point of entry
- Main circulation
- Reception/staff station
- Typical room
- Bay area
- Utility room
- Lifts/stairs
- Waiting area
- Bedroom
- Amenities
- Void

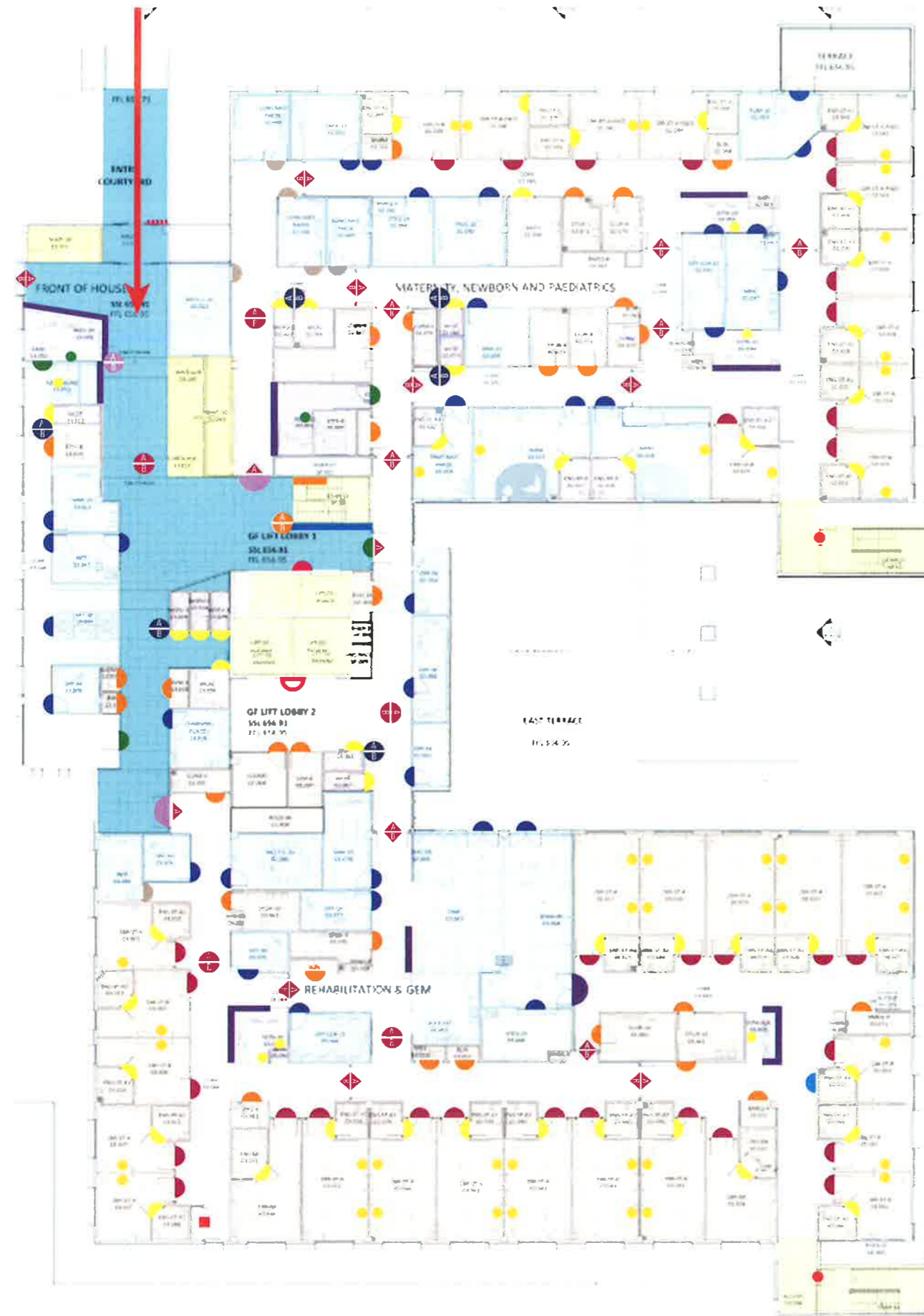
NSW GOVERNMENT | **Planning & Environment**
 Issued under the *Environmental Planning and Assessment Act 1979*
 Approved Application No. SSP 8667
 granted on the **03 DEC 2018**
 Signed [Signature]
 Sheet No. 23 of 27

NOTE:
 These are intent drawings only
 1. Do not scale this drawing. Do not trace and do not scan.
 2. Structural design and certification by contractor/engineer.
 3. No electronic artwork supplied unless otherwise specified.
 4. Application of graphics to sign is subject to client approval.
 5. Manufacture subject to approved contractors shop drawing.
 6. Dimensions to be verified onsite by contractor.
 7. All fixings to be non-corrosive.
 B. All workmanship and materials to be strictly in accordance with current and relevant Australian Standards Codes and Local Government requirements.
 © 2018 Minale Tattersfield
 No part of this work may be reproduced or altered by any process, or any other exclusive right exercised, without the permission of Minale Tattersfield Design Pty Ltd.
 35/47 Neridah Street, Chatswood, 2067.

Minale Tattersfield
 Sydney | London | Paris | Milan | Moscow | Brussels

A Issued for Tender		23.08.2018	
Drawn: AB	Checked: HG	Sheet 1 of 1	Date: 23.08.2018
Client: pvh peckvonharterl Project: Goulburn Base Hospital			⊕ A3
			Do not scale Dimensions in mm
Job No. S3283	Dwg.	Issue A	Scale NTS/AS SHOWN

DETAIL PLAN GROUND 28



SIGNTYPES

- External Vehicular Directional
- External Entry Identification (ID-)
- Entry Information to Main Entry (ENT1)
- Department Identification (IDI-DIW)
- Department Identification Perpendicular (IDI-DIP)
- Level Number Graphic (ID-LID)
- Level Number Graphic in Stairs (ID-LN)
- Lift Directory Public (IL-LD)
- Lift Directory Staff (IL-SL)
- Typical Room Identification (IDI-RI)
- Meeting/Consult/Interview room (IDS-DSS)
- Staff Only Sign (SO-GL / SO-SD)
- Bedroom Identification (IDI-BRM / IDI-BRS)
- Bay Identification (BI-BIR)
- Bed Identification (BI-BIW)
- Utility Identification (IDS-SS-30)
- Main Reception Identification (IDI-LRI)
- Smaller Reception Identification (IDI-SRI)
- Directional Ceiling Suspended (ID-SCS)
- Directional Above Door (ID-SWM)
- Directional Wall Mounted (ID-SW)
- Bulkhead Reception Identification (IDI-RIN)
- Stair ID Perpendicular (IL-MLP)
- Amenities Identification Perpendicular (IDI-PAI)
- Large Room ID Perpendicular (IDI-PRI-LG)
- Amenities Braille/Tactile Identification (IDS-ABT)
- Statutory General (IDS-SS-50)
- Statutory Fire Safety Door (IDS-SS-20)

CIRCULATION

- Point of entry
- Main circulation
- Reception/staff station
- Typical room
- Bay area
- Utility room
- Lifts/stairs
- Waiting area
- Bedroom
- Amenities
- Void

NSW GOVERNMENT | **Planning & Environment**
 Issued under the Environmental Planning and Assessment Act 1979
 Approved Application No. 555 8667
 granted on the 03 DEC 2018
 Signed EW
 Sheet No. 24 of 27

NOTE:
 These are intent drawings only
 1. Do not scale this drawing. Do not trace and do not scan.
 2. Structural design and certification by contractor/engineer.
 3. No electronic artwork supplied unless otherwise specified.
 4. Application of graphics to sign is subject to client approval.
 5. Manufacture subject to approved contractors shop drawing.
 6. Dimensions to be verified onsite by contractor.
 7. All fixings to be non-corrosive.
 8. All workmanship and materials to be strictly in accordance with current and relevant Australian Standards Codes and Local Government requirements.
 © 2018 Minale Tattersfield
 No part of this work may be reproduced or altered by any process, or any other exclusive right exercised, without the permission of Minale Tattersfield Design Pty Ltd. 35/47 Neridah Street, Chatswood, 2067.

Minale Tattersfield
 Sydney | London | Paris | Milan | Moscow | Brussels

A Issued for Tender		23.08.2018	
Drawn: AB	Checked: HG	Sheet 1 of 1	Date: 23.08.2018
Client: pvh peckvonhartel Project: Goulburn Base Hospital		A3	
Job No. S3283		Dwg.	Issue A
		Do not scale Dimensions in mm	
		Scale: NTS/AS SHOWN	

DETAIL PLAN LEVEL 1 30



SIGNTYPES

- External Vehicular Directional
- External Entry Identification (ID-)
- Entry Information to Main Entry (ENT1)
- Department Identification (IDI-DIW)
- Department Identification Perpendicular (IDI-DIP)
- Level Number Graphic (ID-LID)
- Level Number Graphic in Stairs (ID-LN)
- Lift Directory Public (IL-LD)
- Lift Directory Staff (IL-SL)
- Typical Room Identification (IDI-RI)
- Meeting/Consult/Interview room (IDS-DSS)
- Staff Only Sign (SO-GL / SO-SD)
- Bedroom Identification (IDI-BRM / IDI-BRS)
- Bay Identification (BI-BIR)
- Bed Identification (BI-BIW)
- Utility Identification (IDS-SS-30)
- Main Reception Identification (IDI-LRI)
- Smaller Reception Identification (IDI-SRI)
- Directional Ceiling Suspended (ID-SCS)
- Directional Above Door (ID-SWM)
- Directional Wall Mounted (ID-SW)
- Bulkhead Reception Identification (IDI-RIN)
- Stair ID Perpendicular (IL-MLP)
- Amenities Identification Perpendicular (IDI-PAI)
- Large Room ID Perpendicular (IDI-PRI-LG)
- Amenities Braille/Tactile Identification (IDS-ABT)
- Statutory General (IDS-SS-50)
- Statutory Fire Safety Door (IDS-SS-20)

CIRCULATION

- ➔ Point of entry
- Main circulation
- Reception/staff station
- Typical room
- Bay area
- Utility room
- Lifts/stairs
- Waiting area
- Bedroom
- Amenities
- Void

NSW GOVERNMENT | **Planning & Environment**

Issued under the *Environmental Planning and Assessment Act 1979*

Approved Application No. SSD 8661

granted on the 03 DEC 2018

Signed EW

Sheet No. 25 of 27

NOTE:
 These are intent drawings only
 1. Do not scale this drawing. Do not trace and do not scan.
 2. Structural design and certification by contractor/engineer.
 3. No electronic artwork supplied unless otherwise specified.
 4. Application of graphics to sign is subject to client approval.
 5. Manufacture subject to approved contractors shop drawing.
 6. Dimensions to be verified onsite by contractor.
 7. All fixings to be non-corrosive.
 8. All workmanship and materials to be strictly in accordance with current and relevant Australian Standards Codes and Local Government requirements.

© 2018 Minale Tattersfield
 No part of this work may be reproduced or altered by any process, or any other exclusive right exercised, without the permission of Minale Tattersfield Design Pty Ltd, 35/47 Neridah Street, Chatswood, 2067.

Minale Tattersfield
 Sydney | London | Paris | Milan | Moscow | Brussels

A Issued for Tender		23.08.2018	
Drawn: AB	Checked: HG	Sheet 1 of 1	Date: 23.08.2018
Client: pvh peckvonhartel Project: Goulburn Base Hospital			⊕ A3
			Do not scale Dimensions in mm
Job No. S3283	Dwg.	Issue A	Scale NTS/AS SHOWN



SIGNTYPES

- External Vehicular Directional
- External Entry Identification (ID-)
- Entry Information to Main Entry (ENT1)
- Department Identification (IDI-DIW)
- Department Identification Perpendicular (IDI-DIP)
- Level Number Graphic (ID-LID)
- Level Number Graphic in Stairs (ID-LN)
- Lift Directory Public (IL-LD)
- Lift Directory Staff (IL-SL)
- Typical Room Identification (IDI-RI)
- Meeting/Consult/Interview room (IDS-DSS)
- Staff Only Sign (SO-GL / SO-SD)
- Bedroom Identification (IDI-BRM / IDI-BRS)
- Bay Identification (BI-BIR)
- Bed Identification (BI-BIW)
- Utility Identification (IDS-SS-30)
- Main Reception Identification (IDI-LRI)
- Smaller Reception Identification (IDI-SRI)
- Directional Ceiling Suspended (ID-SCS)
- Directional Above Door (ID-SWM)
- Directional Wall Mounted (ID-SW)
- Bulkhead Reception Identification (IDI-RIN)
- Stair ID Perpendicular (IL-MLP)
- Amenities Identification Perpendicular (IDI-PAI)
- Large Room ID Perpendicular (IDI-PRI-LG)
- Amenities Braille/Tactile Identification (IDS-ABT)
- Statutory General (IDS-SS-50)
- Statutory Fire Safety Door (IDS-SS-20)

CIRCULATION

- Point of entry
- Main circulation
- Reception/staff station
- Typical room
- Bay area
- Utility room
- Lifts/stairs
- Waiting area
- Bedroom
- Amenities
- Void

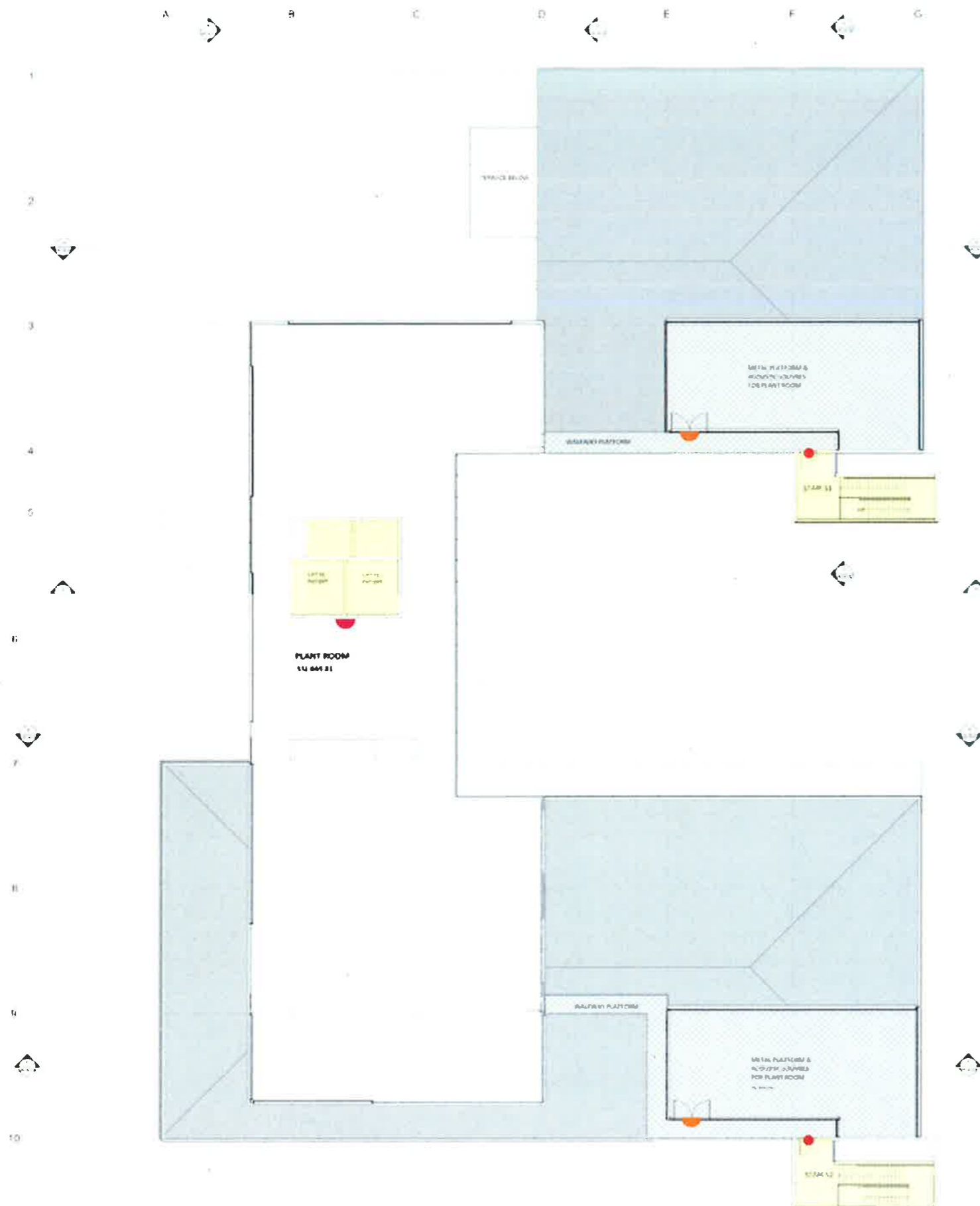
Minale Tattersfield
 Issued under the Environmental Planning and Assessment Act 1979
 Approved Application No. SSD 8667
 granted on the 03 DEC 2018
 Signed [Signature]
 Sheet No. 26 of 27

NOTE:
 These are intent drawings only
 1. Do not scale this drawing. Do not trace and do not scan.
 2. Structural design and certification by contractor/engineer.
 3. No electronic artwork supplied unless otherwise specified.
 4. Application of graphics to sign is subject to client approval.
 5. Manufacture subject to approved contractors shop drawing.
 6. Dimensions to be verified onsite by contractor.
 7. All fixings to be non-corrosive.
 8. All workmanship and materials to be strictly in accordance with current and relevant Australian Standards Codes and Local Government requirements.
 © 2018 Minale Tattersfield
 No part of this work may be reproduced or altered by any process, or any other exclusive right exercised, without the permission of Minale Tattersfield Design Pty Ltd, 35/47 Neridah Street, Chatswood, 2067.

Minale Tattersfield
 Sydney | London | Paris | Milan | Moscow | Brussels

A	Issued for Tender	23.08.2018
Drawn: AB	Checked: HG	Sheet 1 of 1
Client: pvh peckvonhartel Project: Goulburn Base Hospital		⊕ A3
		Do not scale Dimensions in mm
Job No. S3283	Dwg.	Issue A
		Scale: NTS/AS SHOWN

DETAIL PLAN LEVEL 3 34



SIGNTYPES

- External Vehicular Directional
- External Entry Identification (ID-)
- Entry Information to Main Entry (ENT1)
- Department Identification (IDI-DIW)
- Department Identification Perpendicular (IDI-DIP)
- Level Number Graphic (ID-LID)
- Level Number Graphic in Stairs (ID-LN)
- Lift Directory Public (IL-LD)
- Lift Directory Staff (IL-SL)
- Typical Room Identification (IDI-RI)
- Meeting/Consult/Interview room (IDS-DSS)
- Staff Only Sign (SO-GL / SO-SD)
- Bedroom Identification (IDI-BRM / IDI-BRS)
- Bay Identification (BI-BIR)
- Bed Identification (BI-BIW)
- Utility Identification (IDS-SS-30)
- Main Reception Identification (IDI-LRI)
- Smaller Reception Identification (IDI-SRI)
- Directional Ceiling Suspended (ID-SCS)
- Directional Above Door (ID-SWM)
- Directional Wall Mounted (ID-SW)
- Bulkhead Reception Identification (IDI-RIN)
- Stair ID Perpendicular (IL-MLP)
- Amenities Identification Perpendicular (IDI-PAI)
- Large Room ID Perpendicular (IDI-PRI-LG)
- Amenities Braille/Tactile Identification (IDS-ABT)
- Statutory General (IDS-SS-50)
- Statutory Fire Safety Door (IDS-SS-20)

CIRCULATION

- Point of entry
- Main circulation
- Reception/staff station
- Typical room
- Bay area
- Utility room
- Lifts/stairs
- Waiting area
- Bedroom
- Amenities
- Void

NSW GOVERNMENT Planning & Environment
 Issued under the Environmental Planning and Assessment Act 1979

Approved Application SSD 8667
 granted on the 03 DEC 2018

Signed [Signature]
 Sheet No. 27 of 27

NOTE:
 These are intent drawings only
 1. Do not scale this drawing. Do not trace and do not scan.
 2. Structural design and certification by contractor/engineer.

3. No electronic artwork supplied unless otherwise specified.
 4. Application of graphics to sign is subject to client approval.

5. Manufacture subject to approved contractors shop drawing.
 6. Dimensions to be verified onsite by contractor.
 7. All fixings to be non-corrosive.

8. All workmanship and materials to be strictly in accordance with current and relevant Australian Standards Codes and Local Government requirements.

© 2018 Minale Tattersfield
 No part of this work may be reproduced or altered by any process, or any other exclusive right exercised, without the permission of Minale Tattersfield Design Pty Ltd, 35/47 Neridah Street, Chatswood, 2067.

Minale Tattersfield
 Sydney | London | Paris | Milan | Moscow | Brussels

A Issued for Tender		23.08.2018	
Drawn: AB	Checked: HG	Sheet 1 of 1	Date: 23.08.2018
Client: pvh peckvonhartel Project: Goulburn Base Hospital			⊕ A3
			Do not scale Dimensions in mm
Job No. S3283	Dwg.	Issue A	Scale NTS/AS SHOWN