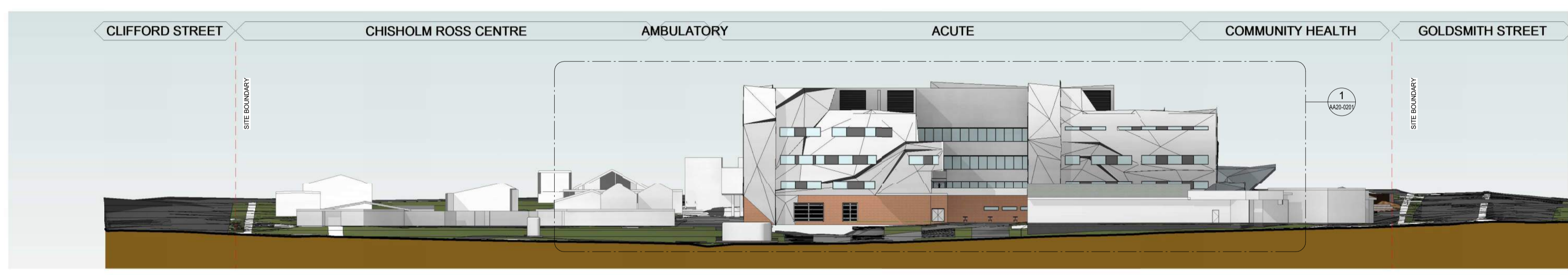
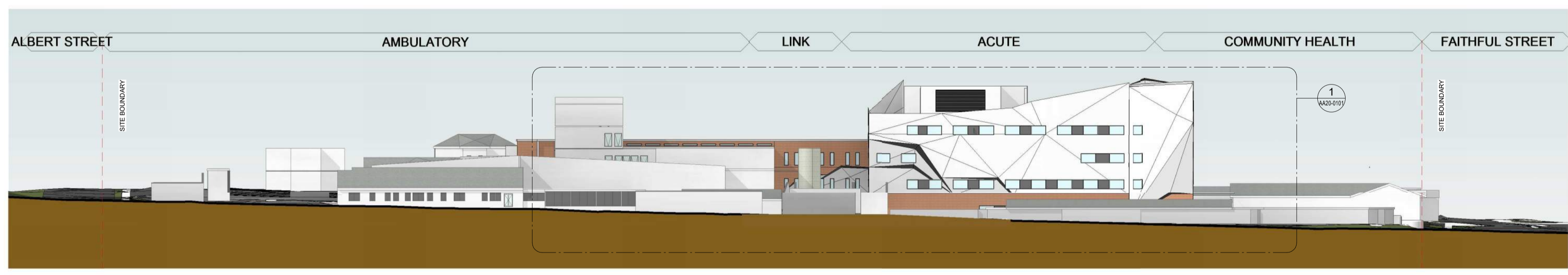


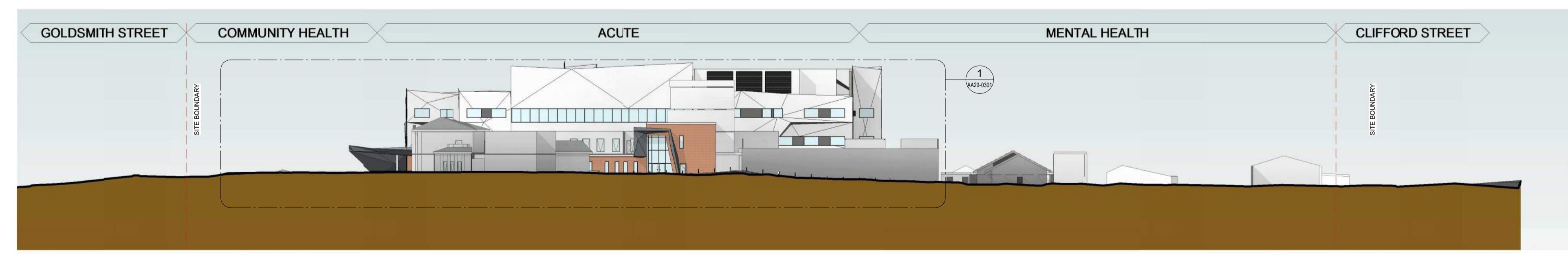
1 PROPOSED PRECINCT ELEVATION - NORTH
1:500



2 PROPOSED PRECINCT ELEVATION - EAST
1:500



3 PROPOSED PRECINCT ELEVATION - SOUTH
1:500



4 PROPOSED PRECINCT ELEVATION - WEST
1:500

D	ISSUE FOR SSDA	25.09.17
C	FINAL SD ISSUE	21.07.17
B	FROZEN PLAN	13.07.17
A	IC3	22.06.17

- REV
- NSW Health Infrastructure**
GOVERNMENT
14/77 Pacific Hwy,
North Sydney,
NSW 2060
T +61 2 9978 5402
www.himfra.health.nsw.gov.au/
- PROJECT MANAGER
HEALTH INFRASTRUCTURE
TSA MANAGEMENT
- ARCHITECT
BILLARD LEECE PARTNERSHIP
- ENGINEERING CONSULTANTS
BONACCI GROUP
- ELECTRICAL, ICT AND SECURITY SERVICES ENGINEER
WOOD AND GRIEVE ENGINEERS
- MECHANICAL & FIRE ENGINEERING
GHD
- BUILDING SUPERVISOR
BM+G
- PLANNING ENGINEER
TTW
- CONSULTANT

blp
Billard Leece Partnership Pty Ltd
Architects & Urban Planners
Studio 201, 50 Holt Street
Surry Hills 2010
NSW Australia
T +61 2 8096 4066

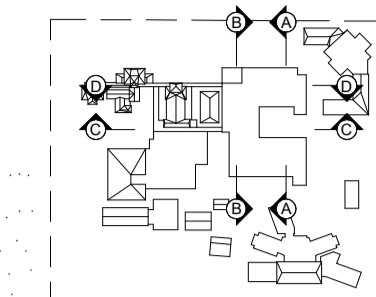
E info@blp.com.au
www.blp.com.au

PROJECT
GOULBURN HOSPITAL & HOSPITAL SERVICES REDEVELOPMENT

DESCRIPTION
PROPOSED PRECINCT ELEVATIONS

Project No	15614
Scale	1:500@A1
Date	15/08/2017
Drawn By	YX
Checked By	LG
Drawing No	AA07-0001
Revision	D

KEY PLAN



DEPARTMENT LEGEND

- AMBUATORY
- CMH
- ED
- EXISTING
- FRONT OF HOUSE
- ICU
- IMAGING - GENERAL
- IPU & PALLIATIVE
- IPU MED/SURG
- LIFT - PATIENT
- LIFT - PUBLIC
- MAT/PAEDS
- NURSE MANAGER
- OCCUPATIONAL THERAPY + PAEDS
- ONCOLOGY
- PATIENT FLOW
- PERIOPERATIVE
- PHARMACY
- PLANT
- SARU
- SHELL
- TEC
- TRAVEL
- Calculating...

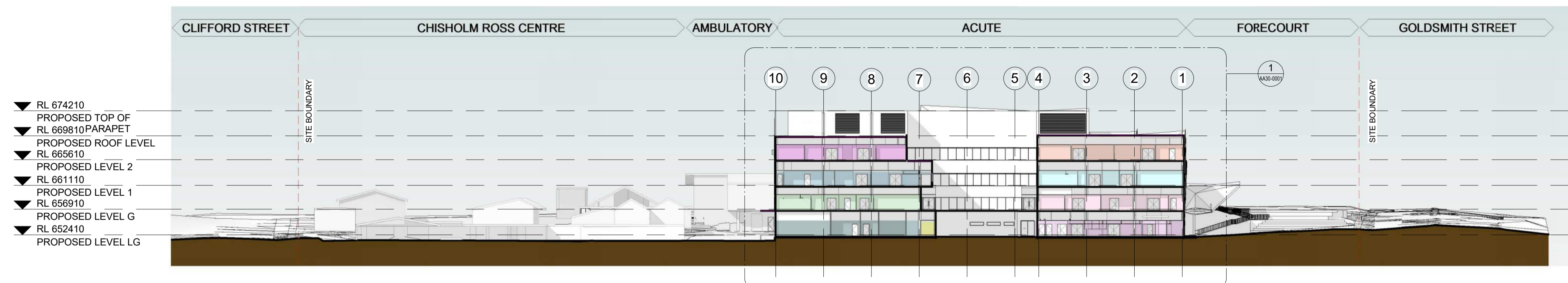
D	ISSUE FOR SSDA	25.09.17
C	FINAL SD ISSUE	21.07.17
B	FROZEN PLAN	13.07.17
A	IC3	22.06.17

NSW Health Infrastructure
 14/77 Pacific Hwy,
 North Sydney,
 NSW 2060
 T +61 2 9978 5402
 www.hinfra.health.nsw.gov.au/
 PROJECT MANAGER
 TSA MANAGEMENT
 ARCHITECT
 BILLARD LEECE PARTNERSHIP
 PROFESSIONAL ENGINEER
 BONACCI GROUP
 ELECTRICAL, ICT AND SECURITY SERVICES ENGINEER
 WOOD AND GRIEVE ENGINEERS
 STRUCTURAL & FIRE ENGINEERING
 GHD
 BUILDING SURVEYOR
 BM+G
 MECHANICAL ENGINEER
 TTW
 CONSULTANT

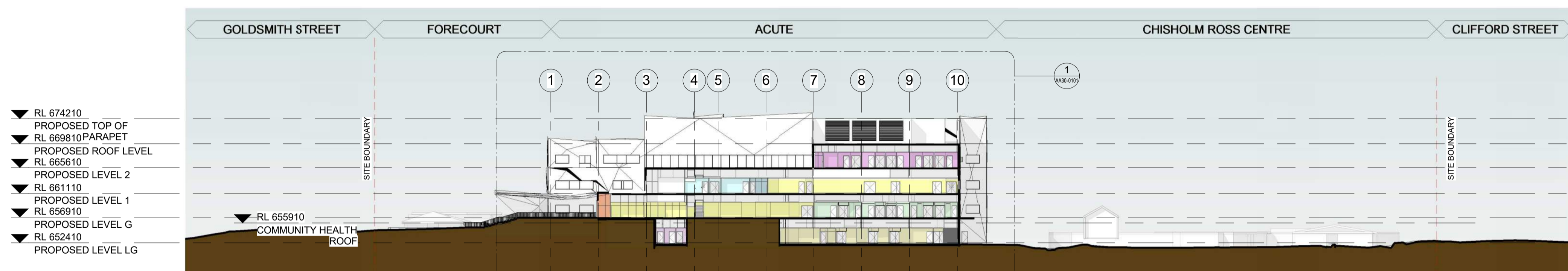
BLP
 Billard Leece Partnership Pty Ltd
 Architects & Urban Planners
 Studio 201, 50 Holt Street
 Sunny Hills 2010
 NSW Australia
 T +61 2 8096 4066
 E info@blp.com.au
 www.blp.com.au

GOULBURN HOSPITAL & HOSPITAL SERVICES REDEVELOPMENT
 PROPOSED PRECINCT SECTIONS

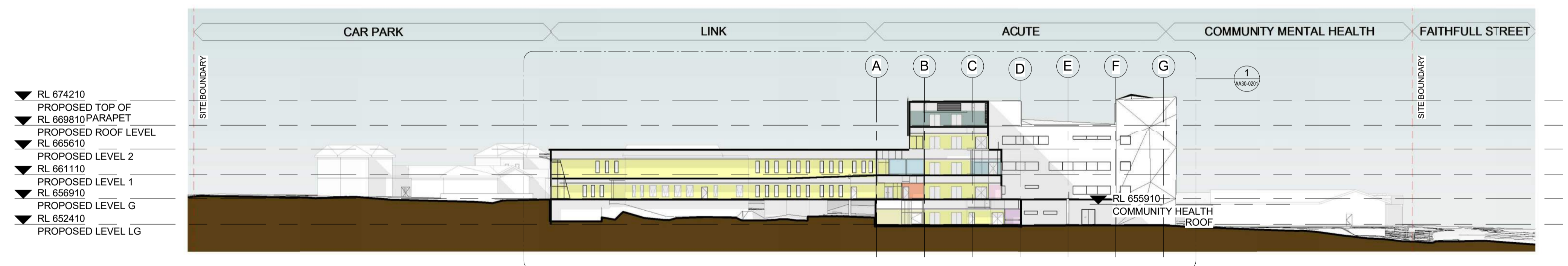
Project No	15614
Scale	1:500@A1
Date	15/08/2017
Drawn By	YX
Checked By	LG
Drawing No	Revision
AA08-0001	D



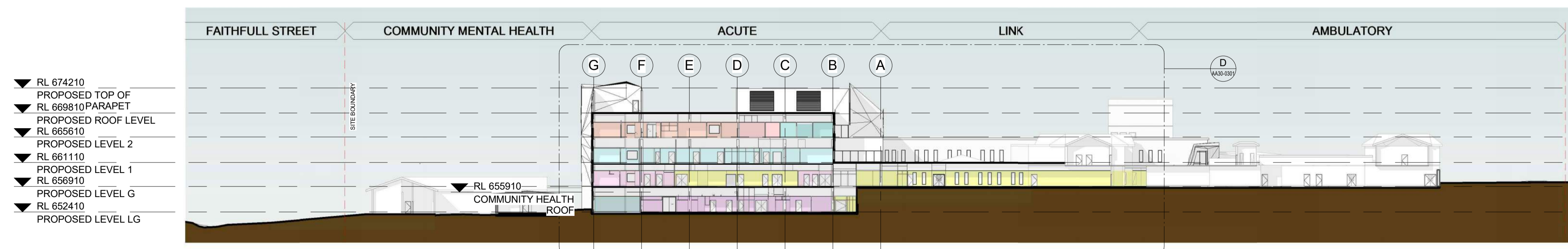
1 PROPOSED PRECINCT SECTION A
1:500



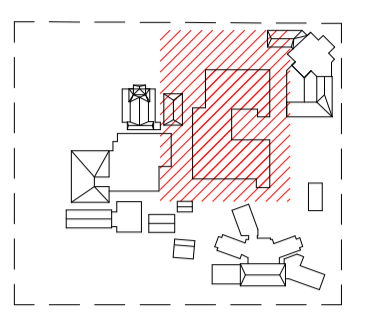
2 PROPOSED PRECINCT SECTION B
1:500



3 PROPOSED PRECINCT SECTION C
1:500



4 PROPOSED PRECINCT SECTION D
1:500



KEY PLAN - Ground Lower

- LEGEND:
- 120/120/120 FIRE WALL
 - 60/60/60 FIRE WALL
 - SMOKE WALL
 - 120/120 FIRE WALL

- LEGEND:
- WALL - NEW CONSTRUCTION
 - WALL - NEW CONSTRUCTION
 - WALL - EXISTING

H	ISSUE FOR SSSA-25-09-17
G	ISSUE FOR INFORMATION
F	AMENDED SD
E	FINAL SD ISSUE
D	FROZEN PLAN
C	IC3
B	IC2
A	IC1
REV	DATE



14/77 Pacific Hwy,
North Sydney,
NSW 2060

T +61 2 9978 5402

www.hmfra.health.nsw.gov.au/

PROJECT MANAGER

TSA MANAGEMENT

ARCHITECT

BILLARD LEECE PARTNERSHIP

ARCHITECTS & Urban Planners

BONACCI GROUP

ELECTRICAL, ICT AND SECURITY SERVICES ENGINEERS

WOOD AND GRIEVE ENGINEERS

MECHANICAL AND FIRE ENGINEERING

GHD

MECHANICAL SUBMITTER

BM+G

MECHANICAL ENGINEER

TTW

CONTRACT

E info@blp.com.au

www.blp.com.au

PROJECT

GOULBURN HOSPITAL & HOSPITAL SERVICES REDEVELOPMENT

DESCRIPTION

GENERAL ARRANGEMENT PLAN - LOWER GROUND FLOOR - ZONE A

Project No 15614

Scale 1:200/GA1

Date 15/08/2017

Drawn By SD

Checked By LG

Drawing No AA10-LG01

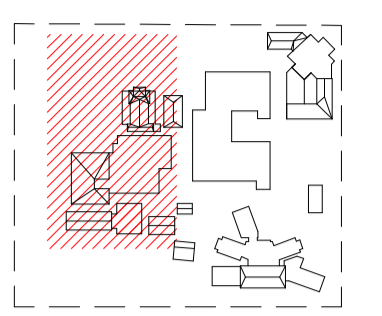
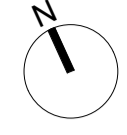
Revision H

SSDA

25/08/2017 4:50:46 PM



FOR CONTINUATION REFER TO DRAWING AA10-LG03



KEY PLAN - Ground Lower Zone B

LEGEND:

- WALL - NEW CONSTRUCTION
- WALL - NEW CONSTRUCTION
- WALL - EXISTING



FOR CONTINUATION REFER TO DRAWING AA10-LG03

REV	ISSUE FOR SSSA	25.09.17
B	FINAL SD ISSUE	21.07.17
A	FROZEN PLAN	13.07.17

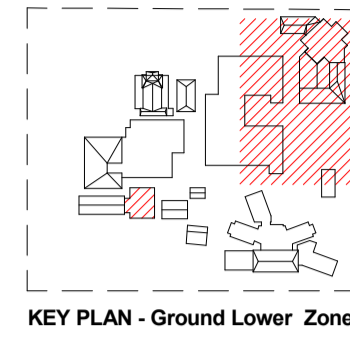
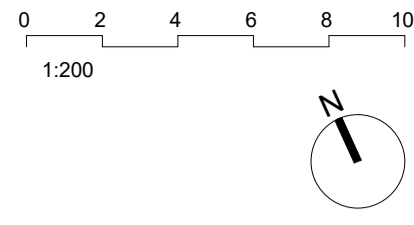
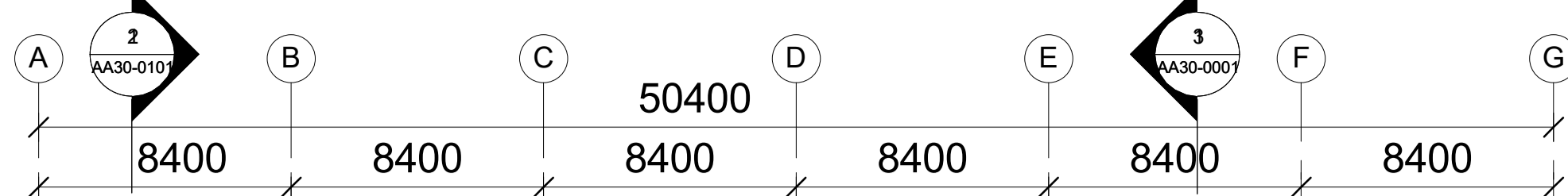
14/77 Pacific Hwy,
 North Sydney,
 NSW 2060
 T +61 2 9978 5402
 www.himfra.health.nsw.gov.au/
 PROJECT MANAGER
 TSA MANAGEMENT
 ARCHITECT
 BILLARD LEECE PARTNERSHIP
 ELECTRICAL, ICT AND SECURITY SERVICES ENGINEERS
 BONACCI GROUP
 ELECTRICAL, ICT AND SECURITY SERVICES ENGINEERS
 WOOD AND GRIEVE ENGINEERS
 MECHANICAL & FIRE ENGINEERING
 GHD
 BUILDING SURVEYOR
 BM+G
 STRUCTURAL ENGINEER
 TTW
 CONSULTANT

Billard Leece Partnership Pty Ltd
 Architects & Urban Planners
 Studio 201, 50 Holt Street
 Surry Hills 2010
 NSW Australia
 T +61 2 8096 4066
 E info@blp.com.au
 www.blp.com.au

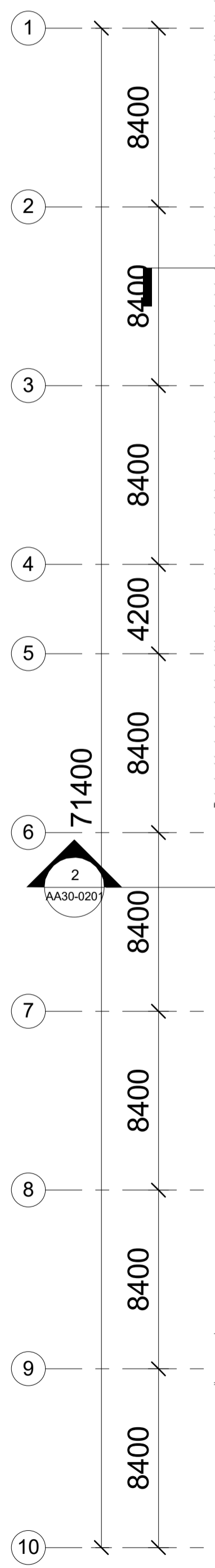
GOULBURN HOSPITAL & HOSPITAL SERVICES REDEVELOPMENT

GENERAL ARRANGEMENT PLAN - LOWER GROUND FLOOR - ZONE B

Project No	15614
Scale	1:200@A1
Date	15/08/2017
Drawn By	LG
Checked By	LG
Drawn No	Revision
AA10-LG02	C



FOR CONTINUATION REFER TO DRAWING AA10-LG01



- LEGEND:**
- 120/120/120 FIRE WALL
 - 60/60/60 FIRE WALL
 - SMOKE WALL
 - -120/120 FIRE WALL
- LEGEND:**
- WALL - NEW CONSTRUCTION
 - WALL - NEW CONSTRUCTION
 - WALL - EXISTING

C ISSUE FOR SSDA 25.09.17
 B FINAL SD ISSUE 21.07.17
 A FROZEN PLAN 13.07.17
 ISSUE

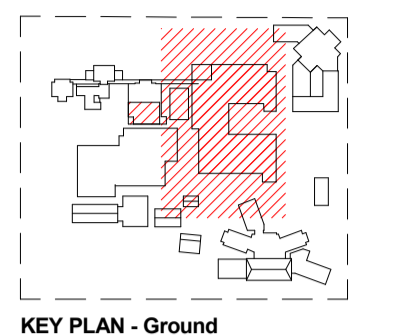
NSW Health Infrastructure
 14/77 Pacific Hwy,
 North Sydney,
 NSW 2060
 T +61 2 9978 5402
 www.himra.health.nsw.gov.au/
 PROJECT MANAGER
 TSA MANAGEMENT
 ARCHITECT
 BILLARD LEECE PARTNERSHIP
 PROJECT MANAGER
 BONACCI GROUP
 ELECTRICAL, ICT AND SECURITY SERVICES ENGINEERS
 WOOD AND GRIEVE ENGINEERS
 STRUCTURAL & FIRE ENGINEERING
 GHD
 BUILDING SUBMITTER
 BM+G
 MECHANICAL ENGINEER
 TTW
 CONSULTANT

BLP
 Billard Leece Partnership Pty Ltd
 Architects & Urban Planners
 Studio 201, 50 Holt Street
 Surry Hills 2010
 NSW Australia
 T +61 2 8096 4066
 E info@blp.com.au
 www.blp.com.au

GOULBURN HOSPITAL & HOSPITAL SERVICES REDEVELOPMENT

DESCRIPTION
 GENERAL ARRANGEMENT PLAN - LOWER GROUND FLOOR - ZONE C

Project No	15614
Scale	1:200@A1
Date	15/08/2017
Drawn By	SD
Checked By	LG
Drawing No	AA10-LG03
Revision	C



LEGEND:
 - - - 120/120/120 FIRE WALL
 - - - 60/60/60 FIRE WALL
 - - - SMOKE WALL
 - - - /120/120 FIRE WALL

LEGEND:
 ■ WALL - NEW CONSTRUCTION
 □ WALL - NEW CONSTRUCTION
 □ WALL - EXISTING

G	ISSUE FOR SSDA	25.09.17
F	ISSUE FOR INFORMATION	18.08.17
E	FINAL SD ISSUE	21.07.17
D	FROZEN PLAN	13.07.17
C	IC3	22.06.17
B	IC2	31.05.17
A	IC1	28.04.17
REV	CL	



14/77 Pacific Hwy,
North Sydney,
NSW 2060
T +61 2 9978 5402
www.health.nsw.gov.au/

PROJECT MANAGER
HEALTH INFRASTRUCTURE
TSA MANAGEMENT

ARCHITECT
BILLARD LEECE PARTNERSHIP

ELECTRICAL, ICT AND SECURITY SERVICES ENGINEERS
BONACCI GROUP

MECHANICAL AND FIRE ENGINEERING
WOOD AND GRIEVE ENGINEERS

BUILDING SUBMISSION
GHQ

BM+G

STRUCTURAL ENGINEER
TTW

CONSULTANT

E info@blp.com.au
www.blp.com.au

PROJECT
GOULBURN HOSPITAL & HOSPITAL SERVICES REDEVELOPMENT

DESCRIPTION
GENERAL ARRANGEMENT PLAN - GROUND FLOOR - ZONE A

Project No 15614
Scale 1:200@A1 Date 15/08/2017

Drawn By SD Checked By LG
Drawing No Revision

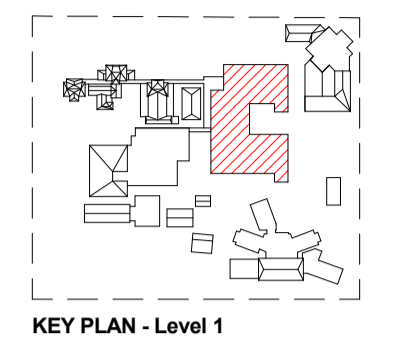
AA10-0001 G

SSDA

25/09/2017 12:03:32 PM



FOR CONTINUATION REFER TO DRAWING AA10-0002



LEGEND:
 - - - 120/120/120 FIRE WALL
 - - - 60/60/60 FIRE WALL
 - - - SMOKE WALL
 - - - 1/20/120 FIRE WALL

LEGEND:
 ■ WALL - NEW CONSTRUCTION
 □ WALL - NEW CONSTRUCTION
 ▨ WALL - EXISTING

G	ISSUE FOR SSDA	25.09.17
F	ISSUE FOR INFORMATION	18.08.17
E	FINAL SD ISSUE	21.07.17
D	FROZEN PLAN	13.07.17
C	IC3	22.06.17
B	IC2	31.05.17
A	IC1	28.04.17
REV		

Health Infrastructure
 NSW GOVERNMENT
 14/77 Pacific Hwy,
 North Sydney,
 NSW 2060
 T +61 2 9978 5402
 www.himfra.health.nsw.gov.au/
 PROJECT MANAGER
 TSA MANAGEMENT
 ARCHITECT
 BILLARD LEECE PARTNERSHIP
 BONACCI GROUP
 ELECTRICAL, ICT AND SECURITY SERVICES ENGINEER
 WOOD AND GRIEVE ENGINEERS
 STRUCTURAL & FIRE ENGINEERING
 GHD
 BUILDING SUPERVISOR
 BM+G
 MECHANICAL ENGINEER
 TTW
 CONSULTANT

BLP
 Billard Leece Partnership Pty Ltd
 Architects & Urban Planners
 Studio 201, 50 Holt Street
 Surry Hills 2010
 NSW Australia
 T +61 2 8096 4066
 E info@blp.com.au
 www.blp.com.au

GOULBURN HOSPITAL & HOSPITAL SERVICES REDEVELOPMENT
 DESCRIPTION
GENERAL ARRANGEMENT PLAN - FIRST FLOOR - ZONE A

Project No	15614
Scale	1:200@A1
Date	15/08/2017
Drawn By	SD
Checked By	LG
Drawing No	Revision
AA10-0101	G

