

The layout has been adjusted to align with architectural changes

0	26/09/18	MH	MH	GK
SSDA Submission				
Rev	Date	By	Chkd	Appd

ARUP
 Hydraulic and Fire Services
 Level 10 201 Kent Street Sydney NSW 2000
 t +61 2 9320 9320 d +61 2 9320 9992

TSA MANAGEMENT
 PROJECT MANAGER
 Level 15, 207 Kent Street
 Sydney NSW 2000
 T +61 2 9276 1400

NSW Health Infrastructure
 CLIENT
 NSW HI
 16/77 Pacific Hwy
 North Sydney NSW 2060
 T +61 2 9276 1400
www.hinfra.health.nsw.gov.au

peckvonnartel pvh
 Level 20, 25 Bligh Street
 Sydney NSW 2000
 T +61 2 9232 6969
 F +61 2 9232 6979
 E sydney@pvh.com.au
 ABN 59 453 647 626

Project Title
Goulburn Hospital and Health Service Redevelopment

Drawing Title
Hydraulic Services - Level 2

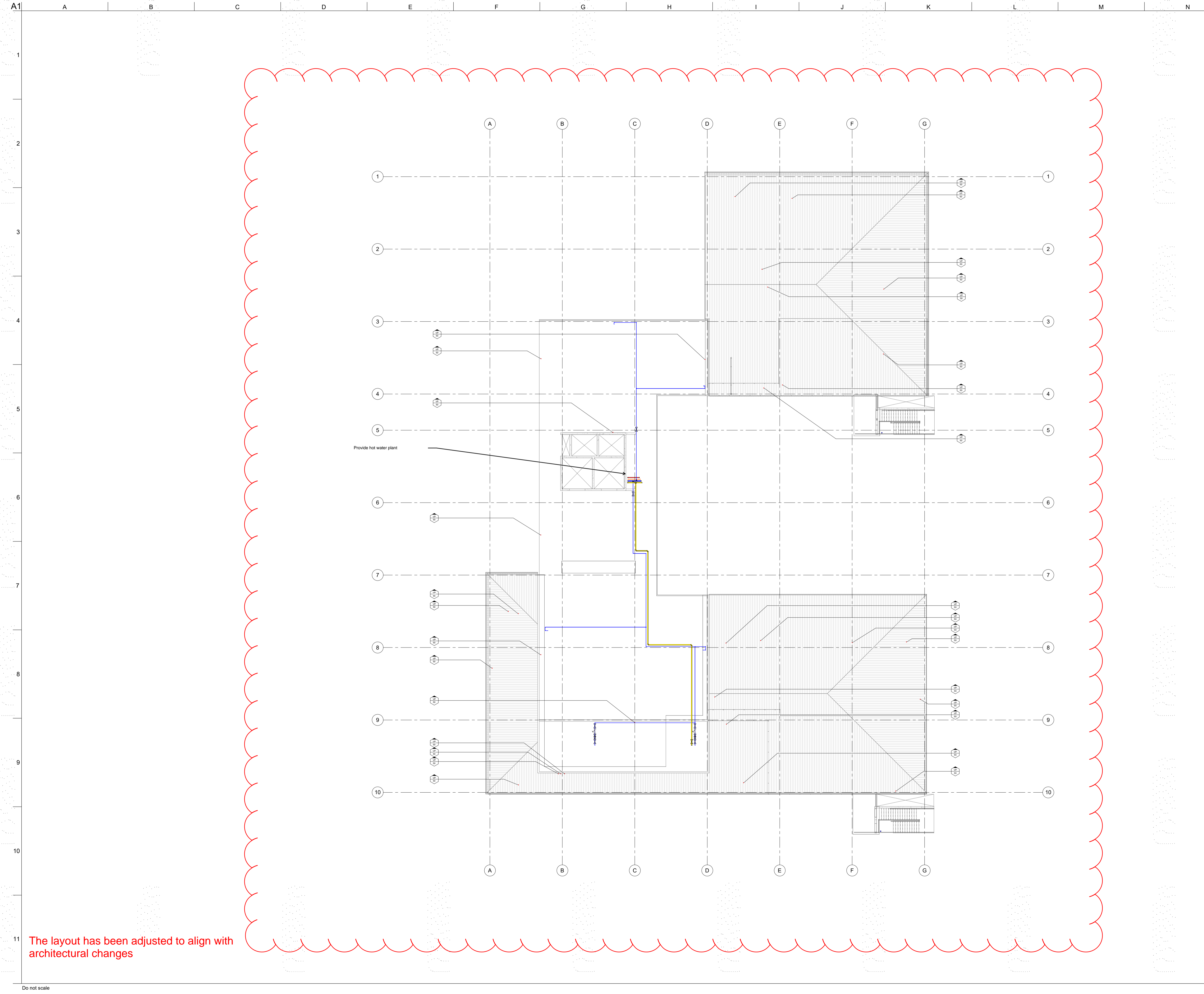
Scale at A1 1:200

Role
 Hydraulic Services

Suitability

Arup Job No
260684

Name
ARUP-HY-DWG-SSDA-08



The layout has been adjusted to align with architectural changes

0	26/09/18	MH	MH	GK
SSDA Submission				
Rev	Date	By	Chkd	Appd

ARUP
 Hydraulic and Fire Services
 Level 10 201 Kent Street Sydney NSW 2000
 t +61 2 9320 9320 d +61 2 9320 9992

TSA MANAGEMENT
 PROJECT MANAGER
 Level 15, 207 Kent Street
 Sydney NSW 2000
 T +61 2 9276 1400

NSW Health Infrastructure
 CLIENT
 NSW HI
 14/77 Pacific Hwy
 North Sydney NSW 2060
 T +61 2 9276 1400
www.hinfra.health.nsw.gov.au

pvh
 Level 20, 25 Bligh Street
 Sydney NSW 2000
 T +61 2 9232 6969
 F +61 2 9232 6979
 E sydney@pvh.com.au
 ABN 59 453 647 626

Project Title
Goulburn Hospital and Health Service Redevelopment

Drawing Title
Hydraulic Services- Level 3

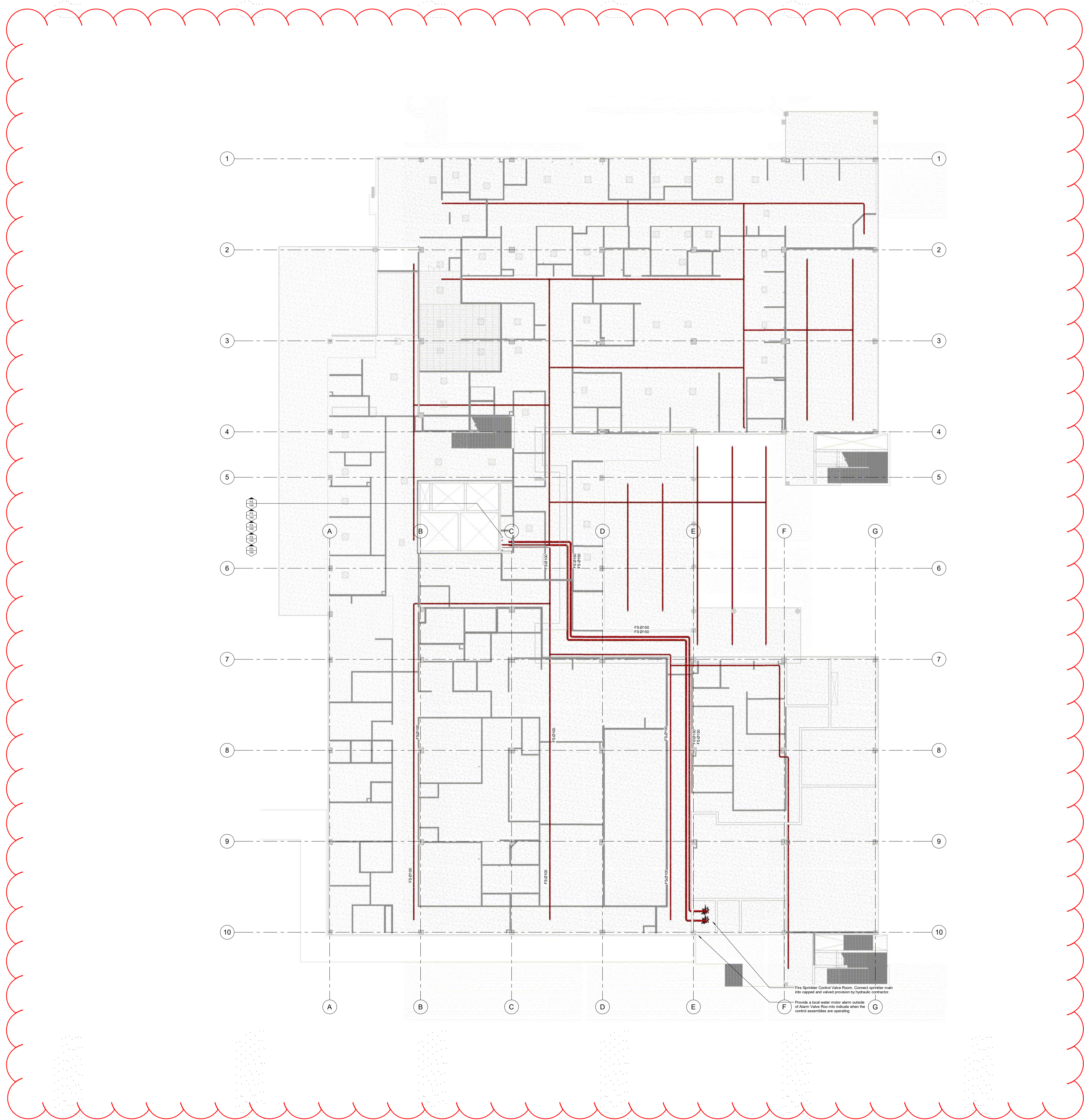
Scale at A1 1:200
 Role Hydraulic Services

Suitability

Arup Job No
260684

Name
ARUP-HY-DWG- SSDA-09

Rev 0



The layout has been adjusted to align with architectural changes

0	26/09/18	MH	MH	GK
SSDA Submission				
Rev	Date	By	Chkd	Appd

ARUP
 Hydraulic and Fire Services
 Level 10 201 Kent Street Sydney NSW 2000
 t +61 2 9320 9320 d +61 2 9320 9992

TSA MANAGEMENT
 PROJECT MANAGER
 Level 15, 207 Kent Street
 Sydney NSW 2000
 T +61 2 9276 1400

NSW Health Infrastructure
 CLIENT
 NSW HI
 14/77 Pacific Hwy
 North Sydney NSW 2060
 T +61 2 9276 1400
www.hinfra.health.nsw.gov.au

peckvonnharrel pvh
 Level 20, 25 Bligh Street
 Sydney NSW 2000
 T +61 2 9232 6969
 F +61 2 9232 6979
 E sydney@pvh.com.au
 ABN 59 453 647 626

Project Title
Goulburn Hospital and Health Service Redevelopment

Drawing Title
Fire Services- Lower Ground

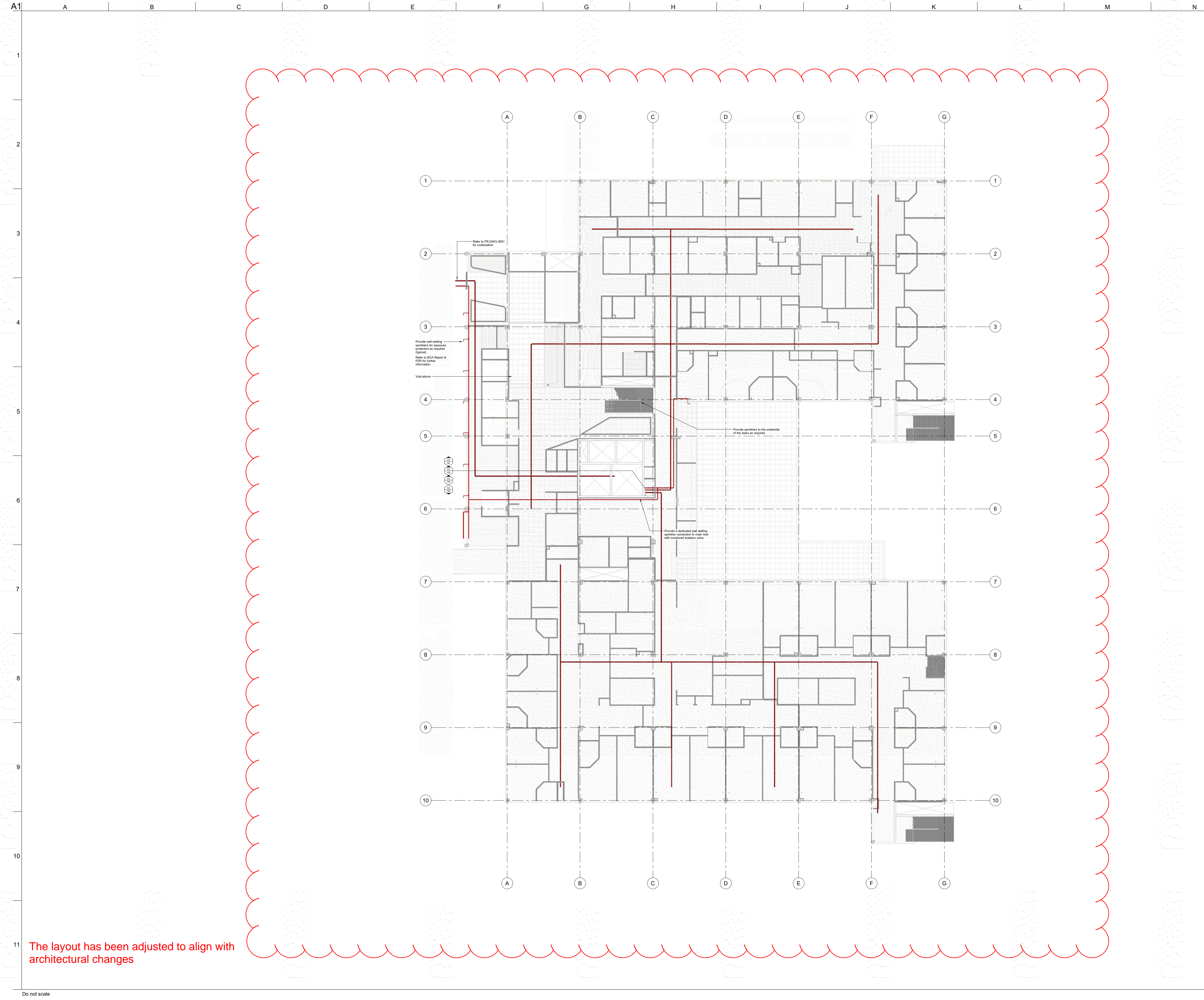
Scale at A1 1:200
 Role Hydraulic Services

Suitability

Arup Job No
260684

Name
ARUP-HY-DWG- SSDA-10

Rev 0



The layout has been adjusted to align with architectural changes

0	26/09/18	MH	MH	GK
SSDA Submission				
Rev	Date	By	Chkd	Appd

ARUP
 Hydraulic and Fire Services
 Level 10 201 Kent Street Sydney NSW 2000
 t +61 2 9320 9320 d +61 2 9320 9992

TSA MANAGEMENT
 PROJECT MANAGER
 Level 15, 207 Kent Street
 Sydney NSW 2000
 T +61 2 9276 1400

NSW Health Infrastructure
 CLIENT
 NSW HI
 14/77 Pacific Hwy
 North Sydney NSW 2060
 T +61 2 9276 1400
www.hinfra.health.nsw.gov.au

pvh
 Level 20, 25 Bligh Street
 Sydney NSW 2000
 T +61 2 9232 6969
 F +61 2 9232 6979
 E sydney@pvh.com.au
 ABN 59 453 647 626

Project Title
Goulburn Hospital and Health Service Redevelopment

Drawing Title
Fire Services- Ground

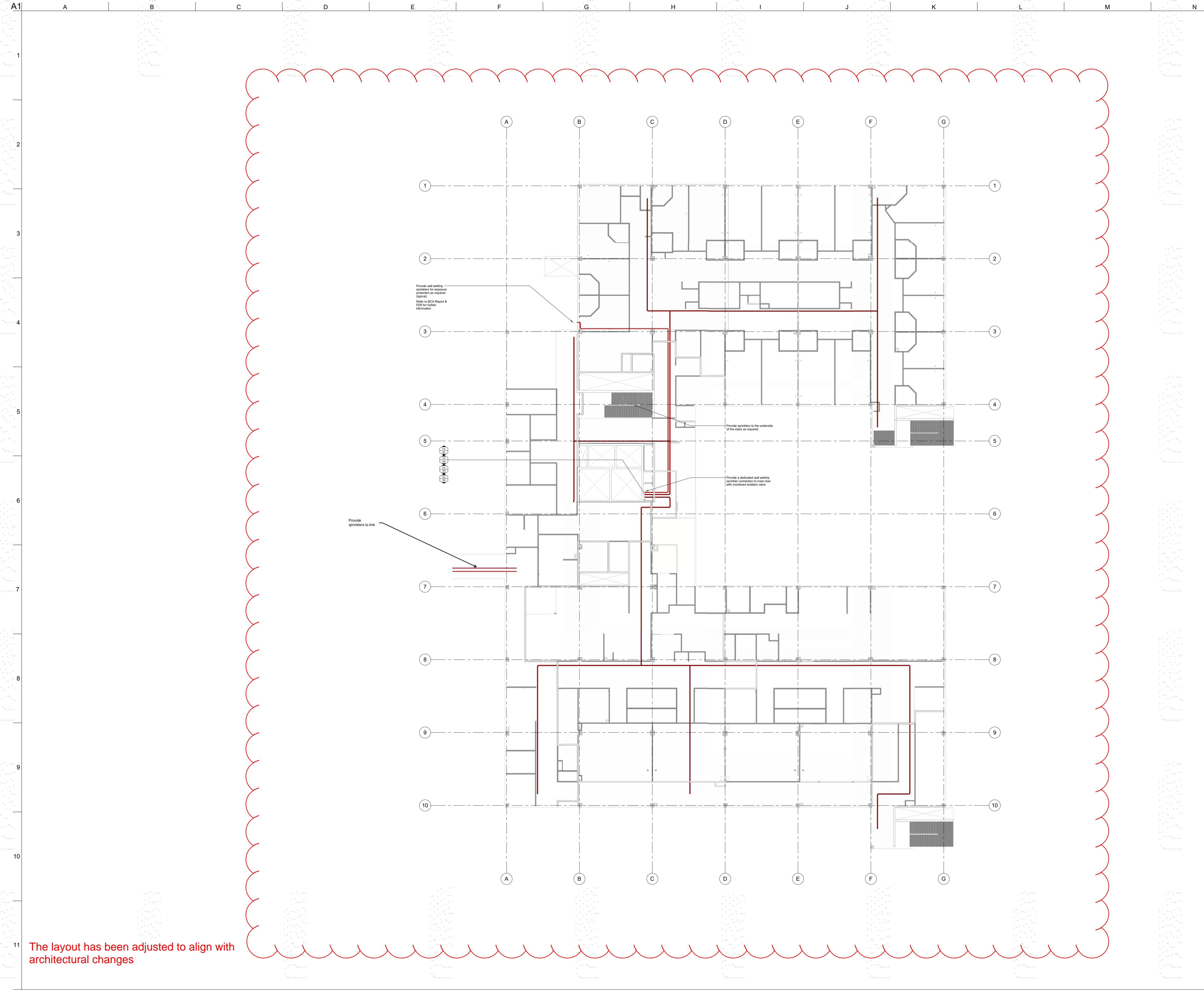
Scale at A1 1:200
 Role Hydraulic Services

Suitability

Arup Job No
260684

Name
ARUP-HY-DWG- SSDA-11

Rev 0



The layout has been adjusted to align with architectural changes

0	26/09/18	MH	MH	GK
SSDA Submission				
Rev	Date	By	Chkd	Appd

ARUP
 Hydraulic and Fire Services
 Level 10 201 Kent Street Sydney NSW 2000
 t +61 2 9320 9320 d +61 2 9320 9992

TSA MANAGEMENT
 PROJECT MANAGER
 Level 15, 207 Kent Street
 Sydney NSW 2000
 T +61 2 9276 1400

NSW Health Infrastructure
 CLIENT
 NSW HI
 14/77 Pacific Hwy
 North Sydney NSW 2060
 T +61 2 9276 1400
www.hinfra.health.nsw.gov.au

peckvornharte
 Level 20, 25 Bligh Street
 Sydney NSW 2000
 T +61 2 9232 6969
 F +61 2 9232 6979
 E sydney@pvh.com.au
 ABN 59 453 647 626

Project Title
Goulburn Hospital and Health Service Redevelopment

Drawing Title
Fire Services- Level 1

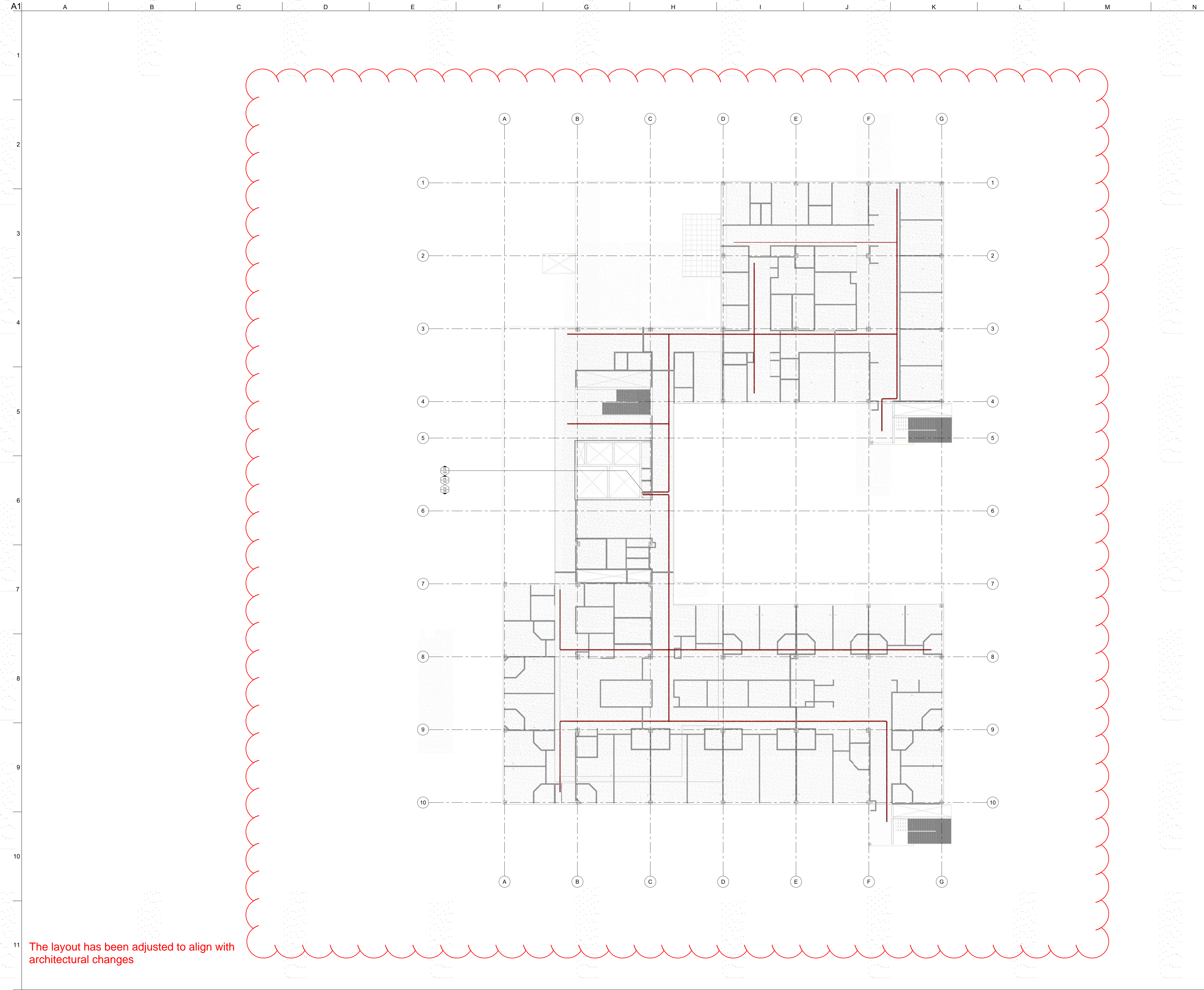
Scale at A1 1:200

Role
 Hydraulic Services

Suitability

Arup Job No
260684

Name
ARUP-HY-DWG- SSDA-12



The layout has been adjusted to align with architectural changes

0	26/09/18	MH	MH	GK
SSDA Submission				
Rev	Date	By	Chkd	Appd

ARUP
 Hydraulic and Fire Services
 Level 10 201 Kent Street Sydney NSW 2000
 t +61 2 9320 9320 d +61 2 9320 9992

TSA MANAGEMENT
 PROJECT MANAGER
 Level 15, 207 Kent Street
 Sydney NSW 2000
 T +61 2 9276 1400

NSW Health Infrastructure
 CLIENT
 NSW HI
 14/77 Pacific Hwy
 North Sydney NSW 2060
 T +61 2 9276 1400
www.hinfra.health.nsw.gov.au

pvh
 Level 20, 25 Bligh Street
 Sydney NSW 2000
 T +61 2 9232 6969
 F +61 2 9232 6979
 E sydney@pvh.com.au
 ABN 59 453 647 626

Project Title
Goulburn Hospital and Health Service Redevelopment

Drawing Title
Fire Services- Level 2

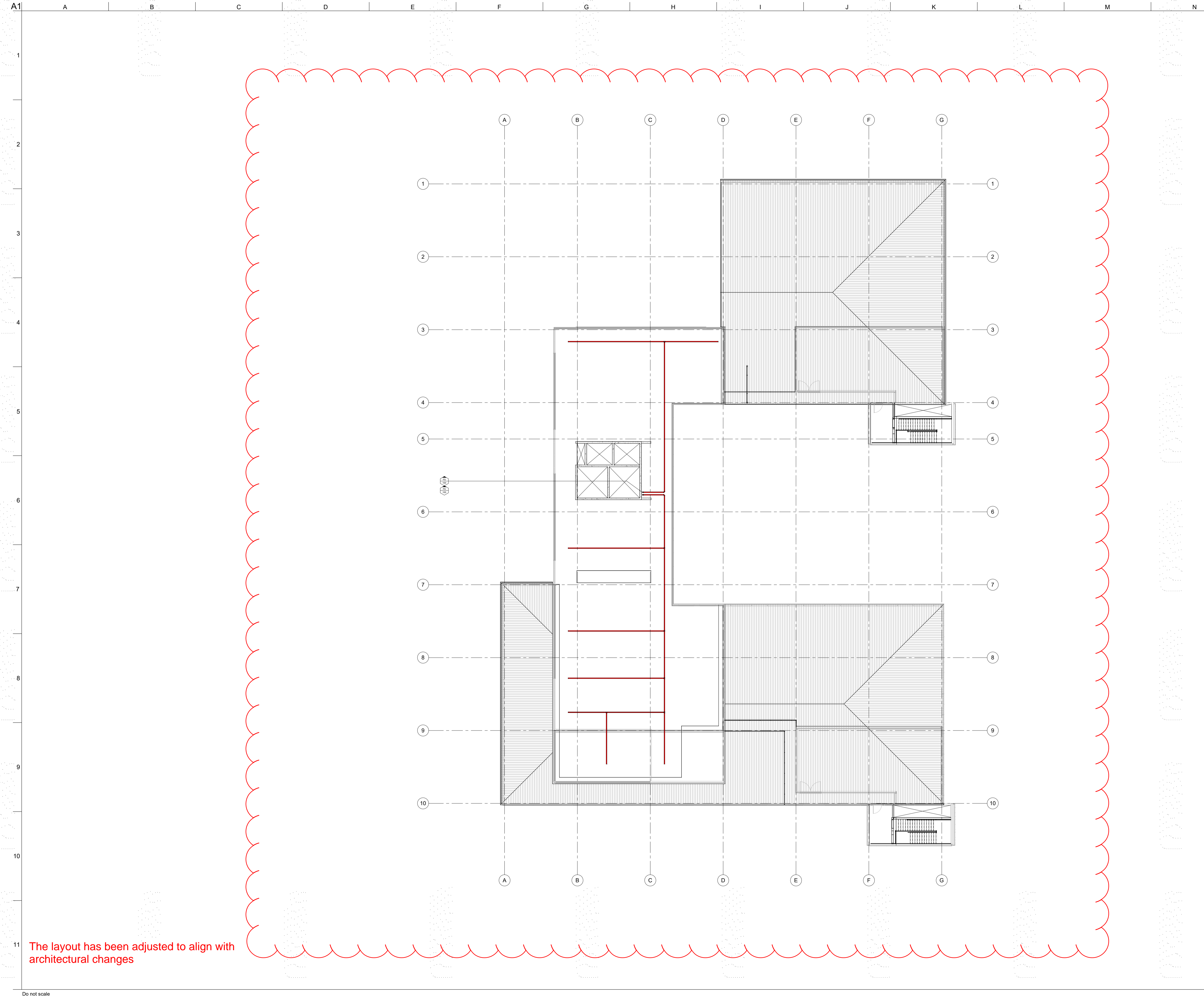
Scale at A1 1:200
 Role Hydraulic Services

Suitability

Arup Job No
260684

Name
ARUP-HY-DWG- SSDA-13

Rev
0



The layout has been adjusted to align with architectural changes

0	26/09/18	MH	MH	GK
SSDA Submission				
Rev	Date	By	Chkd	Appd

ARUP
 Hydraulic and Fire Services
 Level 10 201 Kent Street Sydney NSW 2000
 t +61 2 9320 9320 d +61 2 9320 9992

TSA MANAGEMENT
 PROJECT MANAGER
 Level 15, 207 Kent Street
 Sydney NSW 2000
 T +61 2 9276 1400

NSW Health Infrastructure
 CLIENT
 NSW HI
 14/77 Pacific Hwy
 North Sydney NSW 2060
 T +61 2 9276 1400
www.hinfra.health.nsw.gov.au

pvh
 Level 20, 25 Bligh Street
 Sydney NSW 2000
 T +61 2 9232 6969
 F +61 2 9232 6979
 E sydney@pvh.com.au
 ABN 59 453 647 626

Project Title
Goulburn Hospital and Health Service Redevelopment

Drawing Title
Fire Services- Level 3

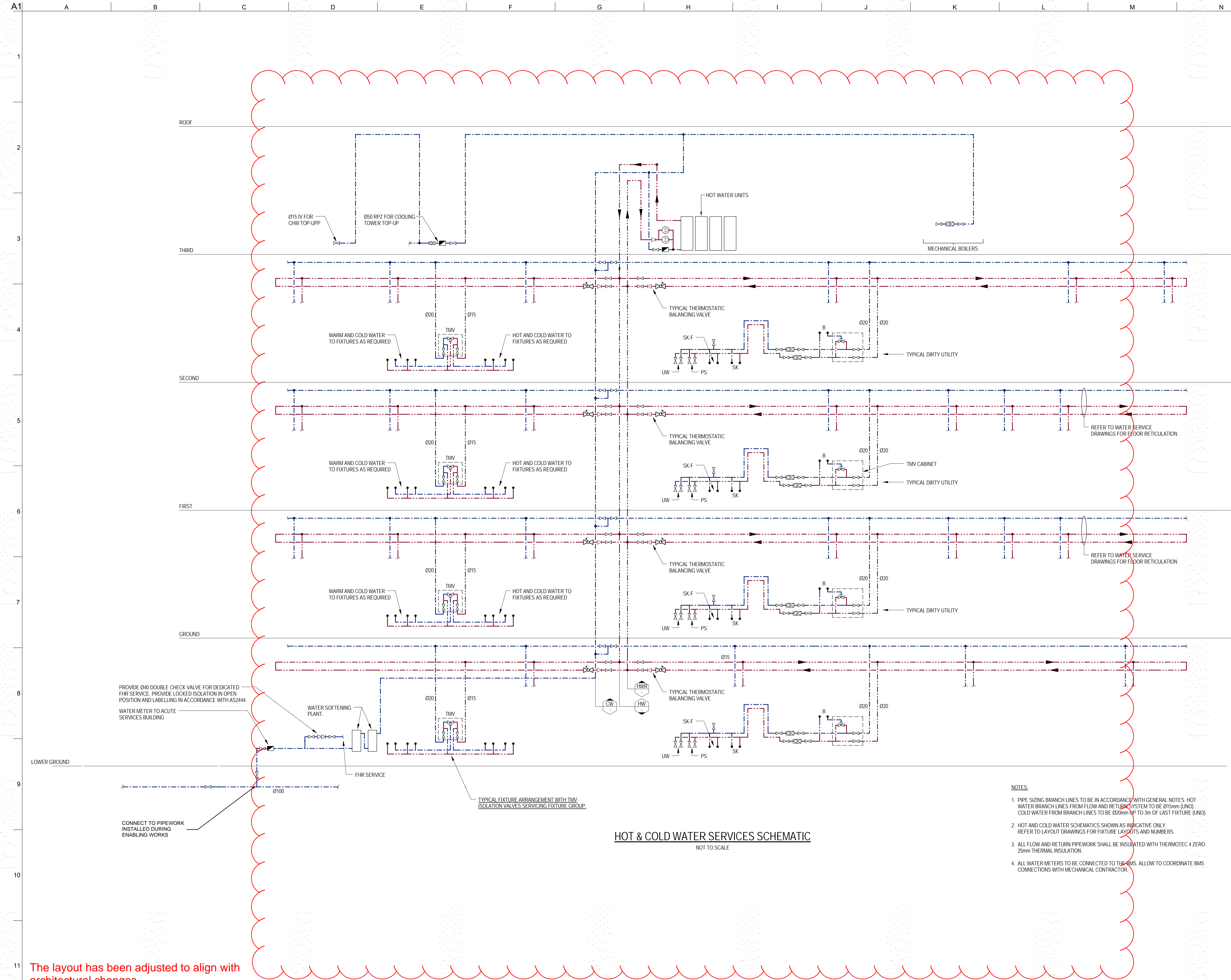
Scale at A1 1:200

Role
 Hydraulic Services

Suitability

Arup Job No	Rev
260684	0

Name
ARUP-HY-DWG- SSDA-14



- NOTES:**
- PIPE SIZING BRANCH LINES TO BE IN ACCORDANCE WITH GENERAL NOTES. HOT WATER BRANCH LINES FROM FLOW AND RETURN SYSTEM TO BE Ø15mm (UNO). COLD WATER FROM BRANCH LINES TO BE Ø20mm UP TO 3m OF LAST FIXTURE (UNO).
 - HOT AND COLD WATER SCHEMATICS SHOWN AS INDICATIVE ONLY. REFER TO LAYOUT DRAWINGS FOR FIXTURE LAYOUTS AND NUMBERS.
 - ALL FLOW AND RETURN PIPEWORK SHALL BE INSULATED WITH THERMOTEC 4 ZERO, 25mm THERMAL INSULATION.
 - ALL WATER METERS TO BE CONNECTED TO THE BMS. ALLOW TO COORDINATE BMS CONNECTIONS WITH MECHANICAL CONTRACTOR.

0	26/09/18	MH	MH	GK
SSDA Submission				
Rev	Date	By	Chkd	Appd

ARUP
Hydraulic and Fire Services
Level 10 201 Kent Street Sydney NSW 2000
t +61 2 9320 9320 d +61 2 9320 9992

TSA MANAGEMENT
Level 15, 307 Kent Street Sydney NSW 2000
T +61 2 9276 1400

NSW Health Infrastructure
CLIENT
NSW HI
14/77 Pacific Hwy North Sydney NSW 2060
T +61 2 9276 1400
www.hinfra.health.nsw.gov.au

Level 20, 25 Bligh Street Sydney NSW 2000
T +61 2 9232 6969
F +61 2 9232 6979
E sydney@pvh.com.au
ABN 59 453 647 626

Project Title
Goulburn Hospital and Health Service Redevelopment

Drawing Title
Hot & Cold Water Services Schematic

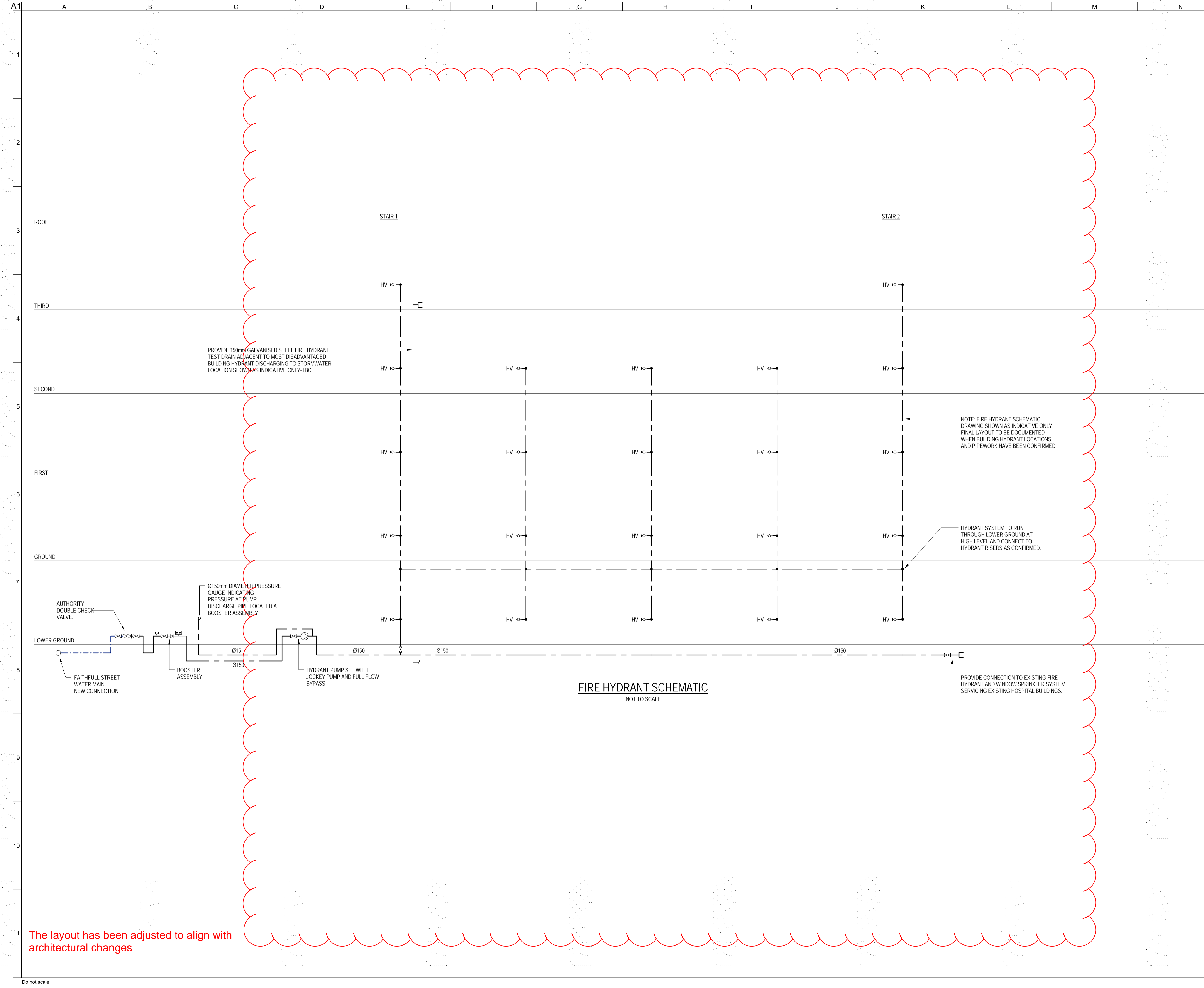
Scale at A1
NTS

Role
Hydraulic Services

Arup Job No	Rev
260684	0

Name
ARUP-HY-DWG-SSDA-20

The layout has been adjusted to align with architectural changes



FIRE HYDRANT SCHEMATIC
NOT TO SCALE

The layout has been adjusted to align with architectural changes

0	26/09/18	MH	MH	GK
SSDA Submission				
Rev	Date	By	Chkd	Appd

ARUP
Hydraulic and Fire Services
Level 10 201 Kent Street Sydney NSW 2000
t +61 2 9320 9320 d +61 2 9320 9992

TSA MANAGEMENT
PROJECT MANAGER
TSA MANAGEMENT
Level 15, 207 Kent Street
Sydney NSW 2000
T +61 2 9276 1400

NSW Health Infrastructure
CLIENT
NSW HI
14/77 Pacific Hwy
North Sydney NSW 2060
T +61 2 9276 1400
www.hinfra.health.nsw.gov.au

pvh
Level 20, 25 Bligh Street
Sydney NSW 2000
T +61 2 9232 6969
F +61 2 9232 6979
E sydney@pvh.com.au
ABN 59 453 647 626

Project Title
Goulburn Hospital and Health Service Redevelopment

Drawing Title
Fire Hydrant Schematic

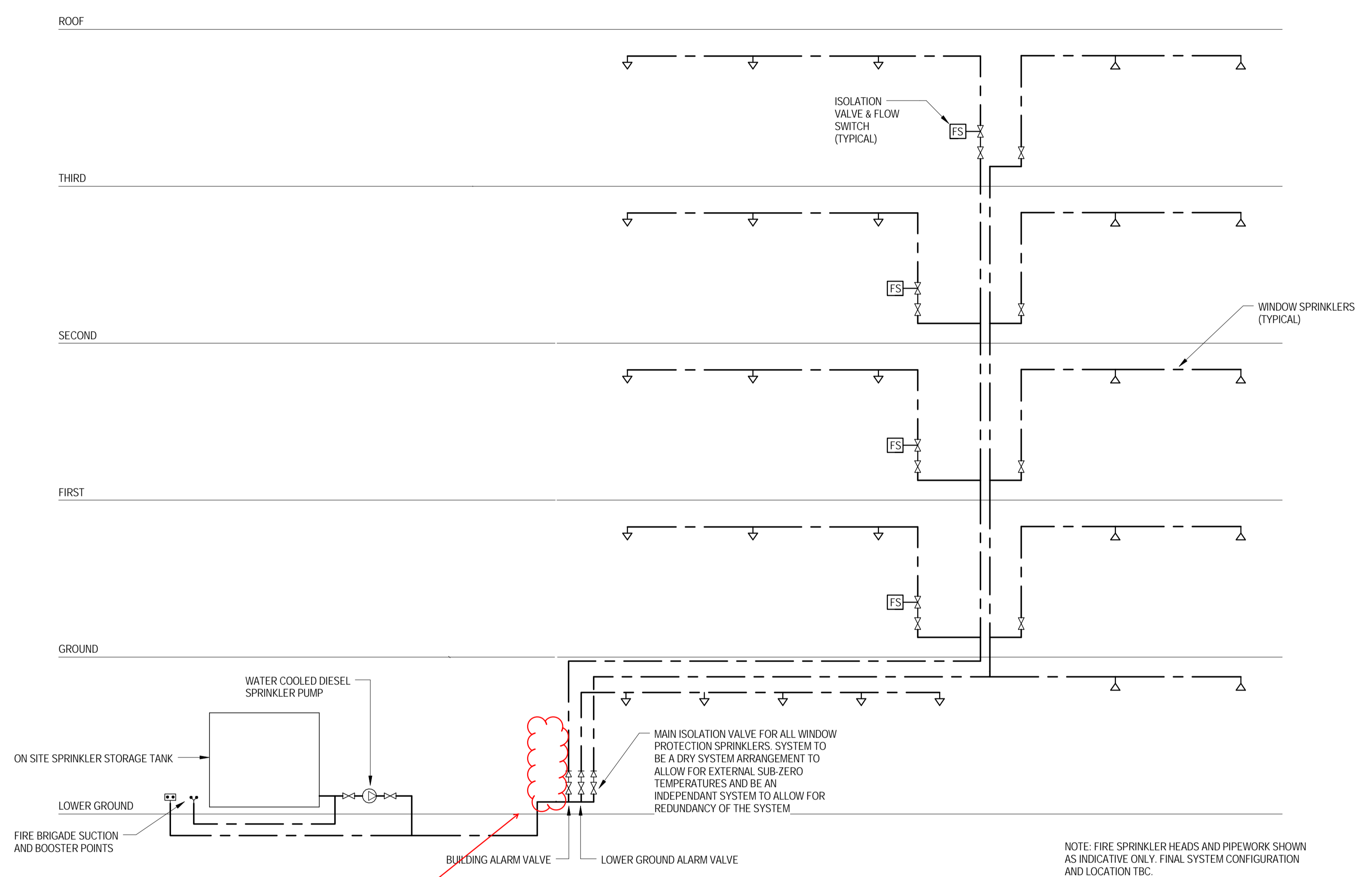
Scale at A1
NTS

Role
Hydraulic Services

Suitability

Arup Job No
260684

Name
ARUP-HY-DWG-SSDA-21



Dry System to electrical rooms removed

FIRE SPRINKLER SERVICES SCHEMATIC
NOT TO SCALE

NOTE: FIRE SPRINKLER HEADS AND PIPEWORK SHOWN AS INDICATIVE ONLY. FINAL SYSTEM CONFIGURATION AND LOCATION TBC.

NOTE: EXTENT OF WINDOW SPRINKLER PROTECTION HAS NOT BEEN DETERMINED DURING SCHEMATIC DESIGN AND HAS BEEN SHOWN TO CAPTURE POSSIBLE REQUIREMENTS ONLY.

0	26/09/18	MH	MH	GK
SSDA Submission				
Rev	Date	By	Chkd	Appd

ARUP
Hydraulic and Fire Services
Level 10 201 Kent Street Sydney NSW 2000
t +61 2 9320 9320 d +61 2 9320 9992

TSA MANAGEMENT
Level 15, 207 Kent Street
Sydney NSW 2000
T +61 2 9276 1400

CLIENT
NSW HI
14/77 Pacific Hwy
North Sydney NSW 2060
T +61 2 9276 1400
GOVERNMENT
www.hinfra.health.nsw.gov.au

pvh
Level 20, 25 Bligh Street
Sydney NSW 2000
T +61 2 9232 6969
F +61 2 9232 6979
E sydney@pvh.com.au
ABN 59 453 647 626

Project Title
Goulburn Hospital and Health Service Redevelopment

Drawing Title
Fire Sprinkler Schematic

Scale at A1
NTS

Role
Hydraulic Services

Suitability

Arup Job No
260684

Rev
0

Name
ARUP-HY-DWG-SSDA-22