

LEGEND - CEILING MATERIAL TYPES
REFER TO A2011 INTERNAL MATERIALS & FINISHES SCHEDULE FOR SPECIFIC TYPES & DETAILED/PROPRIETARY DESCRIPTION

- ◊ CAI INSULATION
 - ◊ CEX EXISTING CEILING/SOFFIT TO REMAIN
 - ◊ CMC METAL CLADDING
 - ◊ CNO NO CEILING
 - ◊ CPB PLASTERBOARD
 - ◊ CTV TIMBER VENEER
 - ◊ F&F PAINT & APPLIED COATING TYPES
 - ◊ US US OF EXPOSED CONCRETE SOFFIT
- e 'ANYTHING PREFIXED WITH e DENOTES EXISTING'
 C.O.S CONFIRM ON SITE
 TBC TO BE CONFIRMED
 RL REDUCED OR RELATIVE LEVEL
 AFFL ABOVE FINISHED FLOOR LEVEL
 FCL EXISTING FINISHED CEILING LEVEL
 FCL XXXX FINISHED CEILING LEVEL
 FCL XXXX EXISTING RETAINED ARCHITECTURAL ELEMENT TO BE RE-INSTATED TO ORIGINAL SITE CONDITIONS
- SE: 'ANYTHING PREFIXED WITH SE: REFER TO STRUCTURAL ENGINEERS' DRAWINGS
 ME: 'ANYTHING PREFIXED WITH ME: REFER TO MECHANICAL ENGINEERS' DRAWINGS
 FE: 'ANYTHING PREFIXED WITH FE: REFER TO FIRE ENGINEERS' DRAWINGS
 EE: 'ANYTHING PREFIXED WITH EE: REFER TO ELECTRICAL ENGINEERS' DRAWINGS
 HE: 'ANYTHING PREFIXED WITH HE: REFER TO HYDRAULIC ENGINEERS' DRAWINGS
 TS: 'ANYTHING PREFIXED WITH TS: REFER TO THEATER SPECIALISTS' DRAWINGS

LEGEND - CEILING FIXTURES & FITTINGS

- FOR MECHANICAL LEGEND REFER TO M001
FOR FIRE PROTECTION SERVICES LEGEND REFER TO F001
FOR ELECTRICAL SERVICES LEGEND REFER TO E001
FOR THEATER SPECIALIST LEGEND REFER TO T001
*SPECIALIST LIGHTING TO BE CONFIRMED IN SCOPE
*ALL FINAL LOCATION TO BE COORDINATED WITH SERVICES DRAWINGS. EXISTING FIXTURE & FITTING LOCATION TO BE C.O.S
- ☐ SMOKE DETECTOR
 - ☐ EXIT SIGN INCLUDING LED LIGHT
 - ☐ WALL MOUNTED EXIT SIGN INCLUDING LED LIGHT
 - ☐ EXIT SIGN INCLUDING LED LIGHT WITH DIRECTIONAL ARROW
 - ☐ EMERGENCY LIGHTING
 - ☐ SECURITY CAMERA
 - ☐ SPRINKLERS
 - ☐ FIRE HYDRANT POINT
 - ☐ FIRE HOSE REEL
 - ☐ WALL MOUNT OCCUPANCY SENSOR
 - ☐ CEILING MOUNT OCCUPANCY SENSOR
 - ☐ DOWNLIGHT
 - ☐ PENDANT LINEAR LIGHT -LED
 - ☐ FLOURESCENT LIGHT FIXTURE
 - ☐ PEOPLE COUNTER
 - ☐ CEILING ACCESS HATCH
 - ☐ SPEAKER
 - ☐ VISUAL ALARM DEVICE
 - ☐ RIGGING POINT
 - ☐ CEILING MOUNTED RETURN EXHAUST OR TRANSFER GRILLE
 - ☐ CEILING MOUNTED SUPPLY AIR DIFFUSER
 - ☐ AIR GRILLE

NOTE: LIGHTING SPECIFICATION REFER ELECTRICAL DRAWINGS, SPECIFICATION & LUMINAIRE SCHEDULE.

LEGEND - CEILING SYSTEM CODES

- C-11-01-99 HANGING - SUSPENDED CEILINGS
 C-11-01-99 STEEL FRAMED CEILINGS
 C-11-01-99 TIMBER FRAMED CEILINGS
 C-11-01-99 GLAZED CEILING SYSTEMS
 C-11-01-99 LININGS CEILINGS SUPPORTED BY OTHER CEILINGS
- SCHEDULE (CEILING)
 CATEGORY (CEILING)
 TYPE (CEILING)
 CEILING TYPE
 FSATYPE
 ACUSTIC CEILINGS TO ACUSTIC ENGINEERS REQUIRED RATING
 SMOKE CEILINGS
 FIRE RATED CEILINGS

CEILING TYPE TAG:

REFER TO DWG A0412 FOR DETAILS & DESCRIPTION
NOTE: CEILINGSS MARKED 'A' REQUIRING ACUSTIC INSULATION ADDITIONAL TO DOCUMENTED EXTENT TO BE CONFIRMED BY ACUSTIC ENGINEER

- ◻ EXISTING ELEMENTS
- ◻ NEW ELEMENTS
- ◻ EXISTING ACUSTIC SKIN EXTENT
- ◻ NEW ACUSTIC SKIN EXTENT

GENERAL NOTES

1. CONTRACTOR & SUB-CONTRACTORS TO CO-ORDINATE BETWEEN ARCHITECTURAL, STRUCTURAL & SERVICES DOCUMENTATION, WITH ARCHITECTURAL DOCUMENTATION TO TAKE PRECEDENT FOR SET OUT.
2. CONTRACTOR & SUB-CONTRACTORS TO VERIFY ALL DIMENSIONS RELATING TO ALL DIMENSIONS PRIOR TO COMMENCEMENT - DO NOT SCALE FROM DRAWING.
3. SHOP DRAWINGS ARE TO BE SUPPLIED TO THE RELEVANT PARTIES & CONSULTANTS FOR REVIEW & APPROVAL PRIOR TO THE COMMENCEMENT OF ANY WORKS.
4. THIS DRAWING IS TO BE READ IN CONJUNCTION WITH ALL ASSOCIATED SPECIFICATIONS, SCHEDULES & CONTRACT DOCUMENTS.
5. MAKE GOOD ALL AFFECTED SURFACES & FINISHES INCLUDING ITEMS MARKED FOR REMOVAL &/OR RELOCATION.
6. THE CONTRACTOR IS TO ALLOW TO SAND AND RE-FINISH ALL BRUSHBOX NOMINATED TO BE RE-USED THE WORKS. THIS BRUSHBOX IS TO BE INCORPORATED WHEREVER POSSIBLE WHERE WTM-02 IS NOMINATED.

Issue	Description	Drawn	Approved	Date
0	ISSUE	inf	inf	20/10/2018

ARM
ARCHITECTURE
LEVEL 11/527 RUNDERS LANE MELBOURNE VICTORIA 3000 AUS
T 03 8613 1888 F 03 8613 1889
mail@armarchitecture.com.au
ADV 2 475 942 330
www.armarchitecture.com.au

LEGEND - SCOPE
(THIS LEGEND APPLIES TO ALL NEW CONSTRUCTION PHASE DRAWINGS; DOES NOT APPLY TO EXISTING CONDITIONS)

- ◻ AREA SHOWN IN GREY WASH DEPICTS SCOPE OF NEW WORKS
- ◻ AREA SHOWN IN WHITE WASH DEPICTS SCOPE OF NEW WORKS
- ◻ AREA SURROUNDED BY GREEN DASHED LINES DEPICTS TENDER OPTION

SOHT GENERAL NOTES

1. ALL DIMENSIONS AND SIZES ARE IN MILLIMETRES.
2. DO NOT SCALE DRAWINGS. USE FIGURED DIMENSIONS ONLY.
3. INFORMATION INDICATED IN THIS DOCUMENT MAY BE CRUCIAL TO THE SAFE AND PROPER FUNCTIONING OF THE SYDNEY OPERA HOUSE. DO NOT ALTER ANY ASPECT WITHOUT WRITTEN PERMISSION.
4. ALL NEW WORKS MUST COMPLY WITH THE SYDNEY OPERA HOUSE BUILDING SERVICES STANDARD SPECIFICATION (BSSS) AND RELEVANT AUSTRALIAN STANDARDS. NEW WORKS MUST ALSO COMPLY WITH THE REQUIREMENTS OF THE BUILDING CODES OF AUSTRALIA.

SOHT COPYRIGHT
THIS DRAWING AND DESIGN ARE SUBJECT TO COPYRIGHT AND SHALL NOT BE COPIED IN ANY FORM WITH THE WRITTEN PERMISSION OF THE SYDNEY OPERA HOUSE TRUST

Location: Sydney Opera House Trust
North

Status: DEVELOPMENT APPLICATION ISSUE

Contract: BDM-168

Dwn: PHB Date: 2/10/2018
Ckd: AH Scale: 1:100 @ B1

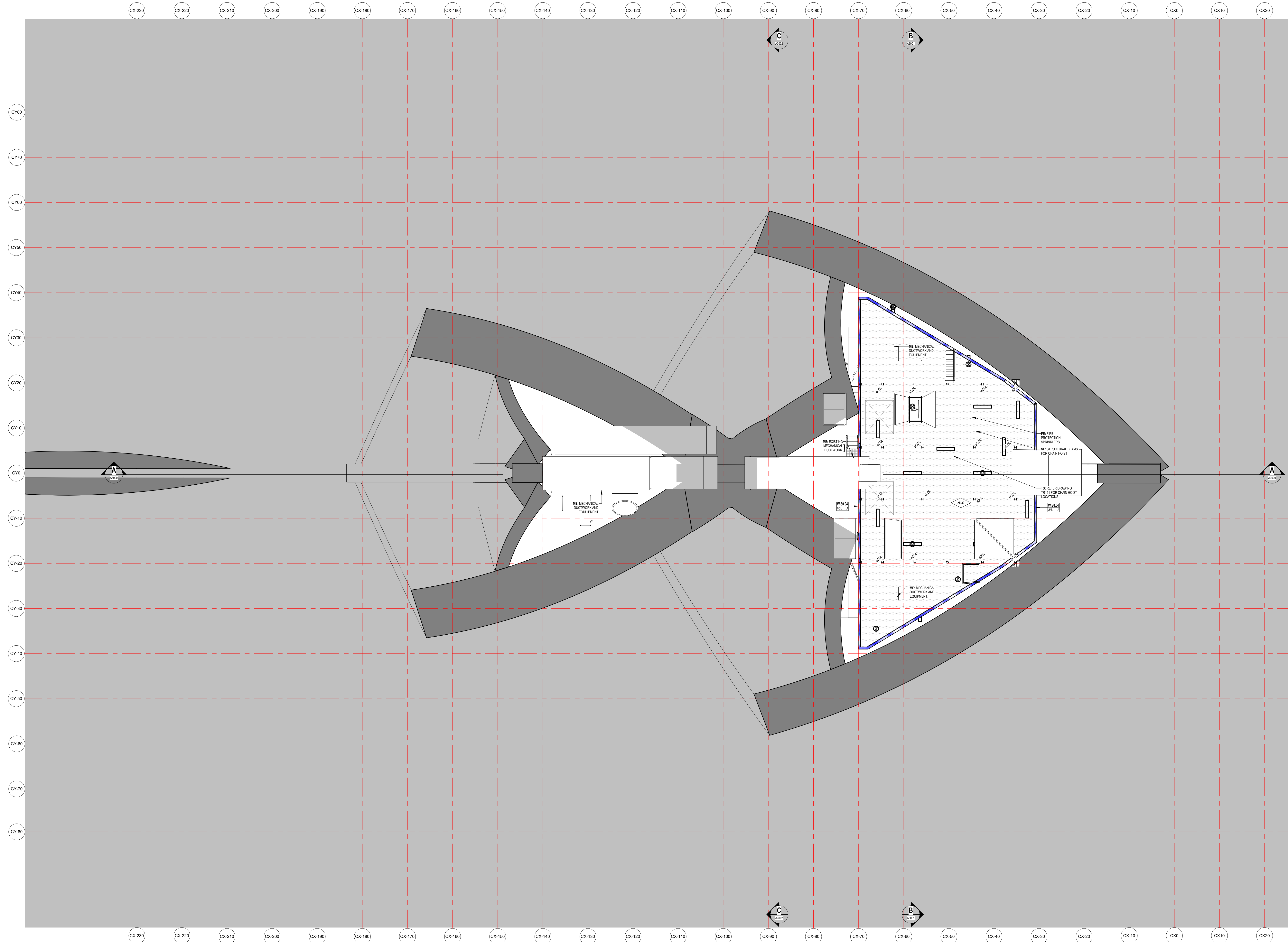
Project: BUILDING RENEWAL PROJECT - CONCERT HALL

Title: REFLECTED CEILING PLAN - LEVEL 8 + 115

Location: CHVA Drawing No: 49-BR-ARM01 Sheet: DA1513 D B1

Sydney Opera House Trust
GPO Box 4274 Sydney NSW Australia 2001
Phone: +61 2 9250 7541
email: info@sydneyoperahouse.com

© Sydney Opera House Trust



LEGEND - CEILING MATERIAL TYPES
REFER TO AD101 INTERNAL MATERIALS & FINISHES SCHEDULE FOR SPECIFIC TYPES & DETAILED PROPRIETARY DESCRIPTION

- ◊ CAI INSULATION
 - ◊ CEX EXISTING CEILING/SOFFIT TO REMAIN
 - ◊ CMC METAL CLADDING
 - ◊ CNO NO CEILING
 - ◊ CPB PLASTERBOARD
 - ◊ CTV TIMBER VENEER
 - ◊ PAB PAINT & APPLIED COATING TYPES
 - ◊ USF US OF EXPOSED CONCRETE SOFFIT
- e DENOTES EXISTING
 C.O.S CONFIRM ON SITE TO BE CONFIRMED
 TBC REDUCED OR RELATIVE LEVEL ABOVE FINISHED FLOOR LEVEL
 AFFL ABOVE FINISHED FLOOR LEVEL
 #FCL EXISTING FINISHED CEILING LEVEL
 FCL.XXXX FINISHED CEILING LEVEL
 [Hatched Box] EXISTING RETAINED ARCHITECTURAL ELEMENT TO BE RE-INSTATED TO ORIGINAL SITE CONDITIONS
- SE: ANYTHING PREFIXED WITH SE: REFER TO STRUCTURAL ENGINEERS' DRAWINGS
 ME: ANYTHING PREFIXED WITH ME: REFER TO MECHANICAL ENGINEERS' DRAWINGS
 FE: ANYTHING PREFIXED WITH FE: REFER TO FIRE ENGINEERS' DRAWINGS
 EE: ANYTHING PREFIXED WITH EE: REFER TO ELECTRICAL ENGINEERS' DRAWINGS
 HE: ANYTHING PREFIXED WITH HE: REFER TO HYDRAULIC ENGINEERS' DRAWINGS
 TS: ANYTHING PREFIXED WITH TS: REFER TO THEATER SPECIALISTS' DRAWINGS

LEGEND - CEILING FIXTURES & FITTINGS

- FOR MECHANICAL LEGEND REFER TO M001
FOR FIRE PROTECTION SERVICES LEGEND REFER TO F001
FOR ELECTRICAL SERVICES LEGEND REFER TO E001
FOR THEATER SPECIALIST LEGEND REFER TO T001
*SPECIALIST LIGHTING TO BE CONFIRMED IN SCOPE
*ALL FINAL LOCATION TO BE COORDINATED WITH SERVICES DRAWINGS
- [Square with 'E'] EXIT SIGN INCLUDING LED LIGHT
 - [Square with 'W'] WALL MOUNTED EXIT SIGN INCLUDING LED LIGHT WITH DIRECTIONAL ARROW
 - [Square with 'EEM-01'] EMERGENCY LIGHTING
 - [Square with 'CCTV'] SECURITY CAMERA
 - [Square with 'SPR'] SPRINKLERS
 - [Square with 'FHP'] FIRE HYDRANT POINT
 - [Square with 'FHR'] FIRE HOSE REEL
 - [Square with 'OS'] WALL MOUNT OCCUPANCY SENSOR
 - [Square with 'DS'] CEILING MOUNT OCCUPANCY SENSOR
 - [Square with 'DL'] DOWNLIGHT
 - [Square with 'PL'] PENDANT LINEAR LIGHT - LED
 - [Square with 'FL'] FLOURESCENT LIGHT FIXTURE
 - [Square with 'PC'] PEOPLE COUNTER
 - [Square with 'CAH'] CEILING ACCESS HATCH
 - [Square with 'SPE'] SPEAKER
 - [Square with 'VAD'] VISUAL ALARM DEVICE
 - [Square with 'RFP'] RISING POINT
 - [Square with 'CRM'] CEILING MOUNTED RETURN EXHAUST OR TRANSFER GRILLE
 - [Square with 'CAD'] CEILING MOUNTED SUPPLY AIR DIFFUSER
 - [Square with 'AG'] AIR GRILLE

NOTE: LIGHTING SPECIFICATION. REFER ELECTRICAL DRAWINGS, SPECIFICATION & LUMINAIRE SCHEDULE.

LEGEND - CEILING SYSTEM CODES

- C-01-01-99 HANGING - SUSPENDED CEILINGS
 C-S1-01-99 STEEL FRAMED CEILINGS
 C-T1-01-99 TIMBER FRAMED CEILINGS
 C-G1-01-99 GLAZED CEILING SYSTEMS
 C-L1-01-99 LININGS (CEILINGS SUPPORTED BY OTHER CEILINGS)
- SCHEDULE (CEILING)
 CATEGORY (CEILING)
 TYPE (CEILING)
 SPECIFIC (CEILING)
 CEILING TYPE
 FSA TYPE
- ACUSTIC CEILINGS TO ACUSTIC ENGINEERS REQUIRED RATING
 - SMOKE CEILINGS
 - FIRE RATED CEILINGS

CEILING TYPE TAG:

NOTE: CEILINGSS MARKED 'A' REQUIRING ACUSTIC INSULATION ADDITIONAL TO DOCUMENTED EXTENT TO BE CONFIRMED BY ACUSTIC ENGINEER

GENERAL NOTES

- CONTRACTOR & SUB-CONTRACTORS TO CO-ORDINATE BETWEEN ARCHITECTURAL, STRUCTURAL & SERVICES DOCUMENTATION, WITH ARCHITECTURAL DOCUMENTATION TO TAKE PRECEDENT FOR SET OUT.
- CONTRACTOR & SUB-CONTRACTORS TO VERIFY ALL DIMENSIONS & CONFIRM ON SITE CONDITIONS RELATING TO ALL DIMENSIONS PRIOR TO COMMENCEMENT - DO NOT SCALE FROM DRAWING
- SHOP DRAWINGS ARE TO BE SUPPLIED TO THE RELEVANT PARTIES & CONSULTANTS FOR REVIEW & APPROVAL PRIOR TO THE COMMENCEMENT OF ANY WORKS
- THIS DRAWING IS TO BE READ IN CONJUNCTION WITH ALL ASSOCIATED SPECIFICATIONS, SCHEDULES & CONTRACT DOCUMENTS
- MAKE GOOD ALL AFFECTED SURFACES & FINISHES INCLUDING ITEMS MARKED FOR REMOVAL & OR RELOCATION
- THE CONTRACTOR IS TO ALLOW TO SAND AND RE-FINISH ALL BRUSHBOX NOMINATED TO BE RE-USED THE WORKS. THIS BRUSHBOX IS TO BE INCORPORATED WHEREVER POSSIBLE WHERE WTM-02 IS NOMINATED

Issue	Description	Drawn	Approved	Date
0	ISSUE			20/10/2018

ARM
ARCHITECTURE
LEVEL 11/522 HUNTERS LANE MELBOURNE VICTORIA 3000 AUS
T 03 8613 1888 F 03 8613 1889
mail@armarchitecture.com.au
ADV 2 475 942 350
www.armarchitecture.com.au

LEGEND - SCOPE
(THIS LEGEND APPLIES TO ALL NEW CONSTRUCTION PHASE DRAWINGS; DOES NOT APPLY TO EXISTING CONDITIONS)

- [Grey Wash] AREA SHOWN IN GREY WASH DEPICTS SCOPE OF EXISTING WORKS
- [White Wash] AREA SHOWN IN WHITE WASH DEPICTS SCOPE OF NEW WORKS
- [Green Dashed] AREA SURROUNDED BY GREEN DASHED LINES DEPICTS TENDER OPTION

SOHT GENERAL NOTES

- ALL DIMENSIONS AND SIZES ARE IN MILLIMETRES.
- DO NOT SCALE DRAWINGS. USE FIGURED DIMENSIONS ONLY.
- INFORMATION INDICATED IN THIS DOCUMENT MAY BE CRUCIAL TO THE SAFE AND PROPER FUNCTIONING OF THE SYDNEY OPERA HOUSE. DO NOT ALTER ANY ASPECT WITHOUT WRITTEN PERMISSION.
- ALL NEW WORKS MUST COMPLY WITH THE SYDNEY OPERA HOUSE BUILDING SERVICES STANDARD SPECIFICATION (BSSS) AND RELEVANT AUSTRALIAN STANDARDS. NEW WORKS MUST ALSO COMPLY WITH THE REQUIREMENTS OF THE BUILDING CODES OF AUSTRALIA.

SOHT COPYRIGHT
THIS DRAWING AND DESIGN ARE SUBJECT TO COPYRIGHT AND SHALL NOT BE COPIED IN ANY FORM WITH THE WRITTEN PERMISSION OF THE SYDNEY OPERA HOUSE TRUST

Location
North

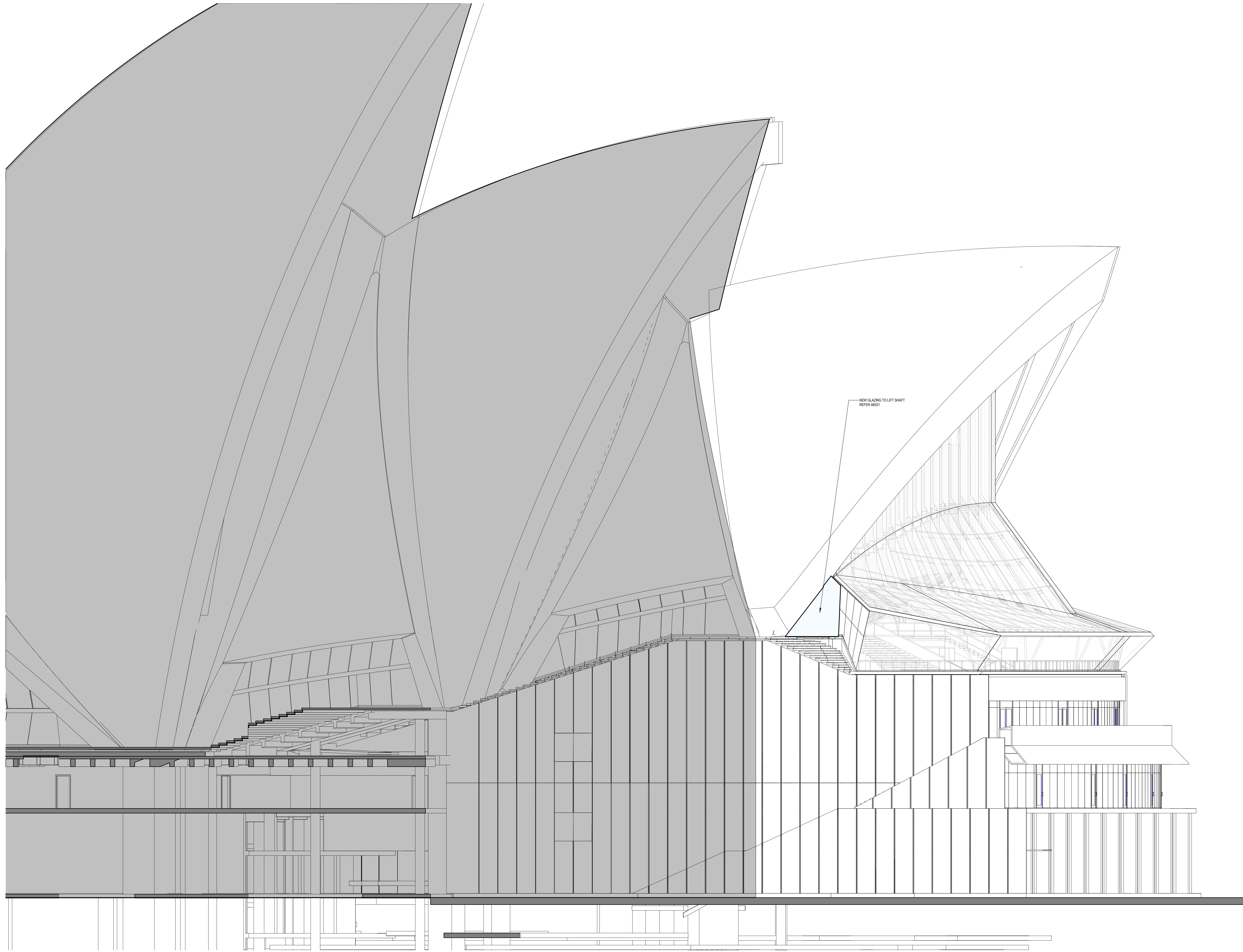
Status	DEVELOPMENT APPLICATION ISSUE
Contract	BDM-168
Drawn	PHB
Date	2/10/2018
Scale	1:100 @ B1

Project	BUILDING RENEWAL PROJECT - CONCERT HALL
Title	REFLECTED CEILING PLAN - LEVEL 9 +130

Sydney Opera House Trust
GPO Box 4274 Sydney NSW Australia 2001
Phone: +61 2 9250 7541
email: info@sydneyoperahouse.com

© Sydney Opera House Trust

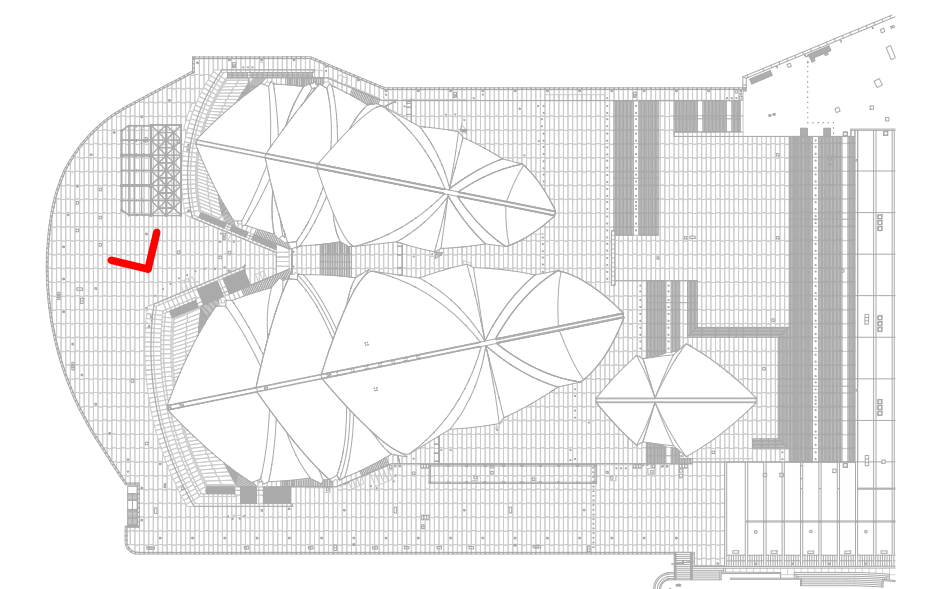
Location	CHVA	Drawing No.	49-BR-ARM01	Sheet	DA1514	Rev.	D B1
----------	------	-------------	-------------	-------	--------	------	------



LEGEND - EXTERNAL MATERIALS & FINISHES
REFER TO A0302 EXTERNAL MATERIALS & FINISHES SCHEDULE FOR SPECIFIC TYPES & DETAILED/PROPRIETARY DESCRIPTION

CODE	DESCRIPTION
F	FLOORS/FLOOR COMPONENTS
FXX	X
W	WALLS/WALL COMPONENTS
WLD	LOUIRE
WSK	SKIRTING
C	CEILINGS & SOFFITS
CXX	X
G	GLAZING/GLASS COMPONENTS
GGT	GLASS TYPES
M	MISCELLANEOUS FITTINGS & EQUIPMENT
MBA	BALUSTRADES & SCREENS
MHR	HANDRAIL
B	BUILDING SERVICES
BXX	X
P	PAINT & APPLIED FINISHES
PRR	FIRE RATED INTUMESCENT PAINT
PPF	PAINT TYPE
PPD	POWDERCOAT
PPR	PROTECTIVE COATING

- GENERAL NOTES**
- CONTRACTOR & SUB-CONTRACTORS TO CO-ORDINATE BETWEEN ARCHITECTURAL, STRUCTURAL & SERVICES DOCUMENTATION, WITH ARCHITECTURAL DOCUMENTATION TO TAKE PRECEDENT FOR SETOUT.
 - CONTRACTOR & SUB-CONTRACTORS TO VERIFY ALL DIMENSIONS & CONFIRM ON SITE CONDITIONS RELATING TO ALL DIMENSIONS PRIOR TO COMMENCEMENT - DO NOT SCALE FROM DRAWING
 - SHOP DRAWINGS ARE TO BE SUPPLIED TO THE RELEVANT PARTIES & CONSULTANTS FOR REVIEW & APPROVAL PRIOR TO THE COMMENCEMENT OF ANY WORKS
 - THIS DRAWING IS TO BE READ IN CONJUNCTION WITH ALL ASSOCIATED SPECIFICATIONS, SCHEDULES & CONTRACT DOCUMENTS
 - MAKE GOOD ALL AFFECTED SURFACES & FINISHES INCLUDING ITEMS MARKED FOR REMOVAL & OR RELOCATION
 - THE CONTRACTOR IS TO ALLOW TO SAND AND RE-FINISH ALL BRUSHBOX NOMINATED TO BE RE-USED THE WORKS. THIS BRUSHBOX IS TO BE INCORPORATED WHEREVER POSSIBLE WHERE WTM-02 IS NOMINATED



LOCATION PLAN

1 PROPOSED EAST ELEVATION
A1203 1 : 100

Issue	Description	Dwn	Appl	Date
0	ISSUE			26/10/2018

ARM
ARCHITECTURE
LEVEL 11/522 RINDERS LANE MELBOURNE VICTORIA 3000 AUS
T 03 8613 1888 F 03 8613 1889
mail@armarchitecture.com.au
ADV 22 475 942 350
www.armarchitecture.com.au

LEGEND - SCOPE
(THIS LEGEND APPLIES TO ALL NEW CONSTRUCTION PHASE DRAWINGS; DOES NOT APPLY TO EXISTING CONDITIONS)

[Grey Wash]	AREA SHOWN IN GREY WASH DEPICTS SCOPE OF NO NEW WORKS
[White Wash]	AREA SHOWN IN WHITE WASH DEPICTS SCOPE OF NEW WORKS
[Green Dashed]	AREA SURROUNDED BY GREEN DASHED LINES DEPICTS TENDER OPTION

- SOHT GENERAL NOTES**
- ALL DIMENSIONS AND SIZES ARE IN MILLIMETRES.
 - DO NOT SCALE DRAWINGS. USE FIGURED DIMENSIONS ONLY.
 - INFORMATION INDICATED IN THIS DOCUMENT MAY BE CRUCIAL TO THE SAFE AND PROPER FUNCTIONING OF THE SYDNEY OPERA HOUSE. DO NOT ALTER ANY ASPECT WITHOUT WRITTEN PERMISSION.
 - ALL NEW WORKS MUST COMPLY WITH THE SYDNEY OPERA HOUSE BUILDING SERVICES STANDARD SPECIFICATION (BSSS) AND RELEVANT AUSTRALIAN STANDARDS. NEW WORKS MUST ALSO COMPLY WITH THE REQUIREMENTS OF THE BUILDING CODES OF AUSTRALIA.

SOHT COPYRIGHT
THIS DRAWING AND DESIGN ARE SUBJECT TO COPYRIGHT AND SHALL NOT BE COPIED IN ANY FORM WITH THE WRITTEN PERMISSION OF THE SYDNEY OPERA HOUSE TRUST

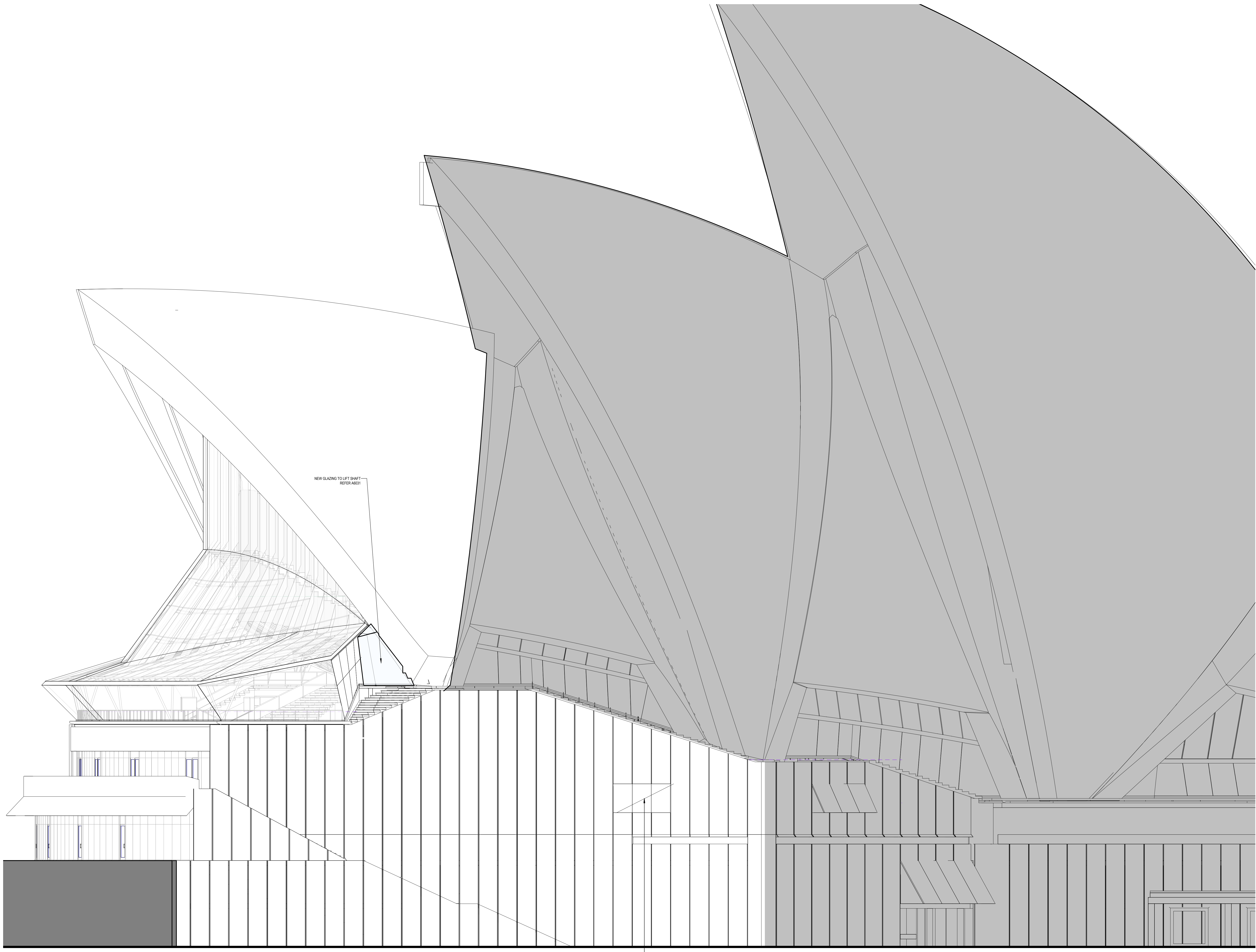
Location	North	Status
[Map]	[North Arrow]	DEVELOPMENT APPLICATION ISSUE
		Contract: BDM-168
		Dwn: JF Date: 2/10/2018
		Ckd: AH Scale: 1:100 @ B1

Project	Title
BUILDING RENEWAL PROJECT - CONCERT HALL	ELEVATION - EAST

Sydney Opera House Trust
GPO Box 4714 Sydney NSW Australia 2001
Phone: +61 2 9250 7541
email: info@sydneyoperahouse.com

© Sydney Opera House Trust

Location	Drawing No.	Sheet	Rev:
CHVA	49-BR-ARM01	DA2102	D B1



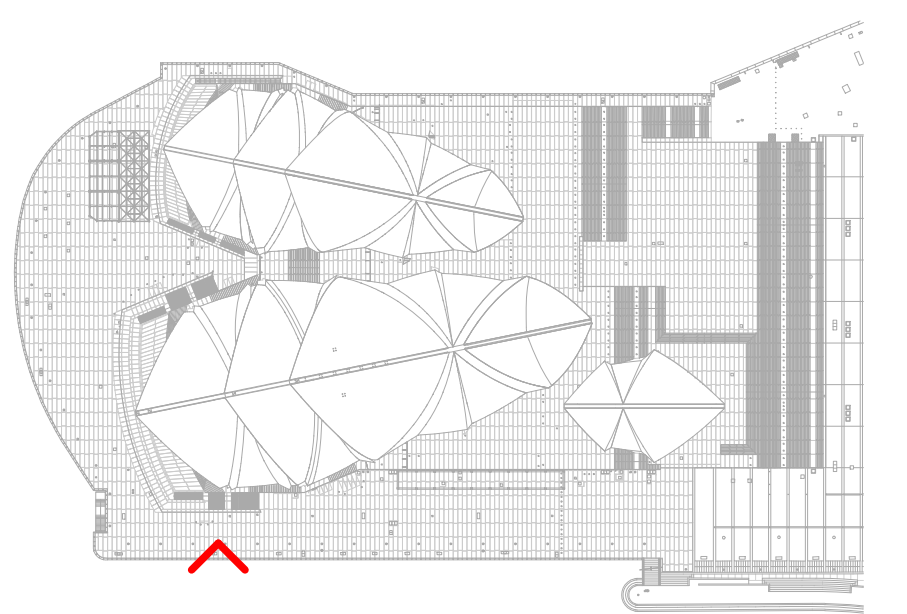
NEW GLAZING TO LIFT SHAFT
REFER A031

NEW O&A INTAKE LOUVRE ON FACADE
TO BE MATCHED WITH ADJACENT
EXISTING E&A LOUVRE

LEGEND - EXTERNAL MATERIALS & FINISHES
REFER TO A0302 EXTERNAL MATERIALS & FINISHES SCHEDULE FOR SPECIFIC TYPES & DETAILED/PROPRIETARY DESCRIPTION

CODE	DESCRIPTION
F	FLOORS/FLOOR COMPONENTS
FXX	X
W	WALLS/WALL COMPONENTS
WLO	LOUVRE
WSK	SKIRTING
C	CEILINGS & SOFFITS
CXX	X
G	GLAZING/GLASS COMPONENTS
GGT	GLASS TYPES
M	MISCELLANEOUS FITTINGS & EQUIPMENT
MBA	BALUSTRADES & SCREENS
MSR	HANDRAIL
B	BUILDING SERVICES
BXX	X
P	PAINT & APPLIED FINISHES
PPR	FIRE RATED INTUMESCENT PAINT
PPF	PAINT TYPE
PPD	POWDERCOAT
PPR	PROTECTIVE COATING

- GENERAL NOTES**
- CONTRACTOR & SUB-CONTRACTORS TO CO-ORDINATE BETWEEN ARCHITECTURAL, STRUCTURAL & SERVICES DOCUMENTATION, WITH ARCHITECTURAL DOCUMENTATION TO TAKE PRECEDENCE FOR SETOUT.
 - CONTRACTOR & SUB-CONTRACTORS TO VERIFY ALL DIMENSIONS & CONFIRM ON SITE CONDITIONS RELATING TO ALL DIMENSIONS PRIOR TO COMMENCEMENT - DO NOT SCALE FROM DRAWING.
 - SHOP DRAWINGS ARE TO BE SUPPLIED TO THE RELEVANT PARTIES & CONSULTANTS FOR REVIEW & APPROVAL PRIOR TO THE COMMENCEMENT OF ANY WORKS.
 - THIS DRAWING IS TO BE READ IN CONJUNCTION WITH ALL ASSOCIATED SPECIFICATIONS, SCHEDULES & CONTRACT DOCUMENTS.
 - MAKE GOOD ALL AFFECTED SURFACES & FINISHES INCLUDING ITEMS MARKED FOR REMOVAL &/OR RELOCATION.
 - THE CONTRACTOR IS TO ALLOW TO SAND AND RE-FINISH ALL BRUSHBOX NOMINATED TO BE RE-USED THE WORKS. THIS BRUSHBOX IS TO BE INCORPORATED WHEREVER POSSIBLE WHERE WTM-02 IS NOMINATED.



LOCATION PLAN

1 PROPOSED WEST ELEVATION
A1203 1:100

Issue	Description	Dwn	Appl	Date
0	ISSUE	inf	inf	30/10/2018

ARM
ARCHITECTURE
LEVEL 11/222 RINDERS LANE MELBOURNE VICTORIA 3000 AUS
T 03 8613 1888 F 03 8613 1889
mail@armarchitecture.com.au
ADV 2 475 942 350
www.armarchitecture.com.au

LEGEND - SCOPE
(THIS LEGEND APPLIES TO ALL NEW CONSTRUCTION PHASE DRAWINGS; DOES NOT APPLY TO EXISTING CONDITIONS)

[Grey Wash]	AREA SHOWN IN GREY WASH DEPICTS SCOPE OF NO NEW WORKS
[White Wash]	AREA SHOWN IN WHITE WASH DEPICTS SCOPE OF NEW WORKS
[Green Dashed]	AREA SURROUNDED BY GREEN DASHED LINES DEPICTS TENDER OPTION

- SOHT GENERAL NOTES**
- ALL DIMENSIONS AND SIZES ARE IN MILLIMETRES.
 - DO NOT SCALE DRAWINGS. USE FIGURED DIMENSIONS ONLY.
 - INFORMATION INDICATED IN THIS DOCUMENT MAY BE CRUCIAL TO THE SAFE AND PROPER FUNCTIONING OF THE SYDNEY OPERA HOUSE. DO NOT ALTER ANY ASPECT WITHOUT WRITTEN PERMISSION OF THE SYDNEY OPERA HOUSE TRUST.
 - ALL NEW WORKS MUST COMPLY WITH THE SYDNEY OPERA HOUSE BUILDING SERVICES STANDARD SPECIFICATION (BSSS) AND RELEVANT AUSTRALIAN STANDARDS. NEW WORKS MUST ALSO COMPLY WITH THE REQUIREMENTS OF THE BUILDING CODES OF AUSTRALIA.

SOHT COPYRIGHT
THIS DRAWING AND DESIGN ARE SUBJECT TO COPYRIGHT AND SHALL NOT BE COPIED IN ANY FORM WITH THE WRITTEN PERMISSION OF THE SYDNEY OPERA HOUSE TRUST

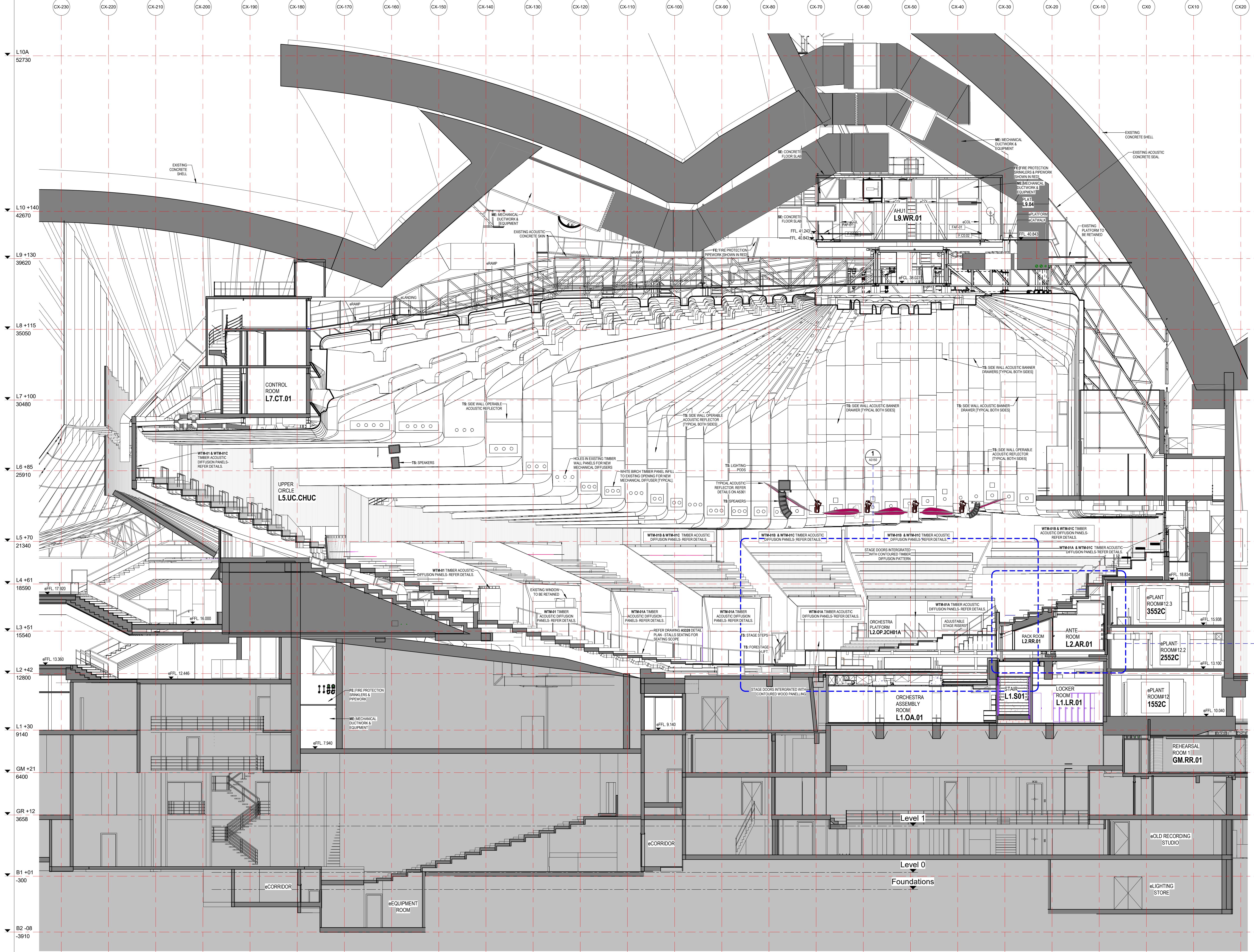
Location	North	Status
[Location Map]	[North Arrow]	DEVELOPMENT APPLICATION ISSUE
		Contract: BDM-168
		Dwn: JJJ Date: 2/10/2018
		Ckd: ARI Scale: 1:100@B1

Project	Title
BUILDING RENEWAL PROJECT - CONCERT HALL	ELEVATION - WEST

Sydney Opera House Trust
GPO Box 4274 Sydney NSW Australia 2001
Phone: +61 2 9250 7541
email: info@sydneyoperahouse.com

© Sydney Opera House Trust

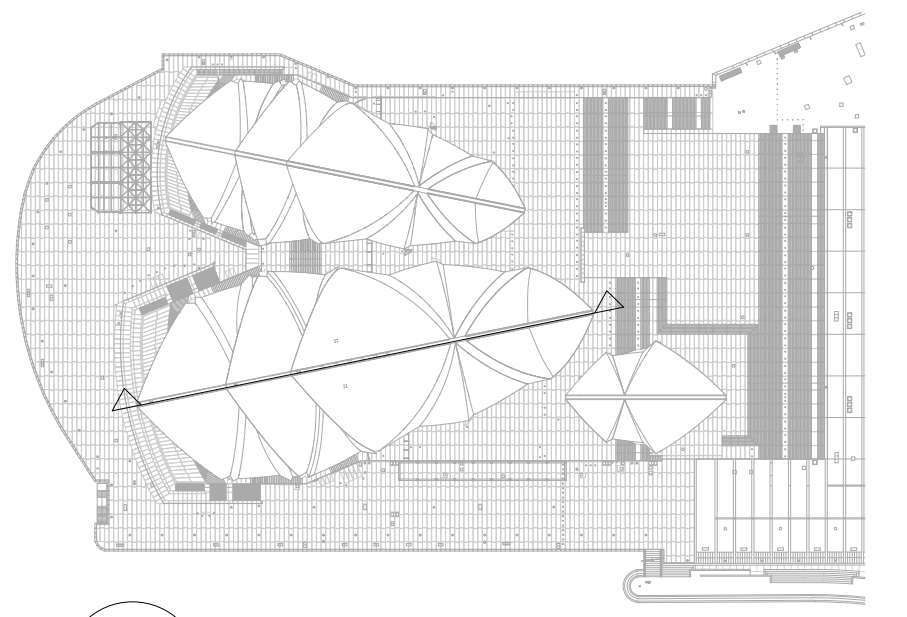
Location	Drawing No.	Sheet	Rev.
CHVA	49-BR-ARM01	DA2103	D B1



LEGEND - INTERNAL MATERIALS & FINISHES
 REFER TO A0301 INTERNAL MATERIALS & FINISHES SCHEDULE FOR SPECIFIC TYPES & DETAILED/PROPRIETARY DESCRIPTION CODE

CODE	DESCRIPTION
F	FLOORS/FLOOR COMPONENTS
FAW	ACCESS WALKWAY
FAH	FLOOR ACCESS HATCH
FEA	EXISTING FLOOR
FCA	CARPET
FCF	CONCRETE FINISH
FCO	CONCRETE
FCJ	CONTROL JOINT
FEJ	EXPANSION JOINT
FLA	FLOOR LADDER
FLJ	LINOLEUM
FPL	PLATE
FSN	STAR NOSING
FTI	FLOOR TILES
FTM	TIMBER
FTS	TACTILE INDICATORS
FVI	VINYL
S	STRUCTURAL COMPONENTS
SMS	METAL STUDS
SCC	CONCRETE
W	WALLS/WALL COMPONENTS
WBA	WALL BATTEN
WBL	MASONRY BLOCKWORK
WEX	EXISTING WALL
WFC	COMPRESSED FIBRE CEMENT
WIM	WALL MIRROR
WMC	METAL CLADDING
WRB	WALL PLASTERBOARD
WSK	SKIRTING
WTI	WALL TILES
WTM	TIMBER
WTV	TIMBER VENEER
C	CEILING/CEILING COMPONENTS
CAI	CEILING INSULATION
CEX	EXISTING CEILING/SOFFIT TO REMAIN
CNC	METAL CLADDING
CNC	NO CEILING
CPB	PLASTERBOARD
CSU	SUSPENDED CEILING COMPONENTS
CTV	TIMBER VENEER
US	UNDERSIDE OF EXPOSED CONCRETE SOFFIT
G	GLAZING/GLASS COMPONENTS
GGT	GLASS TYPES
M	MISCELLANEOUS FIXTURES & FITTINGS
MAC	MISCELLANEOUS ACCESSORIES
MSA	BALLUSTRES & SCREENS
MCU	CURTAIN
MFC	FIXED SHELF
MLK	LOCKER
MPR	PICTURE RAIL
MHR	HANDRAIL
B	BUILDING SERVICES (MEP FIXTURES)
BLI	LIFT
BFH	FIRE HYDRANT
BFR	FIRE HOSE REEL
P	PAINT & APPLIED FINISHES
PRR	FIRE RATED INTUMESCENT PAINT
PPF	PAINT TYPE
PPO	POWDERCOAT
PPR	PROTECTIVE COATING
PSR	ANYTHING PREFIXED WITH PS: REFER TO STRUCTURAL/FACADE ENGINEERS DRAWINGS
ME	ANYTHING PREFIXED WITH ME: REFER TO MECHANICAL ENGINEERS DRAWINGS
FE	ANYTHING PREFIXED WITH FE: REFER TO FIRE ENGINEERS DRAWINGS
EE	ANYTHING PREFIXED WITH EE: REFER TO ELECTRICAL ENGINEERS DRAWINGS
HE	ANYTHING PREFIXED WITH HE: REFER TO HYDRAULIC ENGINEERS DRAWINGS
TS	ANYTHING PREFIXED WITH TS: REFER TO THEATER CONSULTANTS DRAWINGS

- GENERAL NOTES**
- CONTRACTOR & SUB-CONTRACTORS TO CO-ORDINATE BETWEEN ARCHITECTURAL, STRUCTURAL & SERVICES DOCUMENTATION, WITH ARCHITECTURAL DOCUMENTATION TO TAKE PRECEDENT FOR SETOUT.
 - CONTRACTOR & SUB-CONTRACTORS TO VERIFY ALL DIMENSIONS & CONFIRM ON SITE CONDITIONS RELATING TO ALL DIMENSIONS PRIOR TO COMMENCEMENT - DO NOT SCALE FROM DRAWING.
 - SHOP DRAWINGS ARE TO BE SUPPLIED TO THE RELEVANT PARTIES & CONSULTANTS FOR REVIEW & APPROVAL PRIOR TO THE COMMENCEMENT OF ANY WORKS.
 - THIS DRAWING IS TO BE READ IN CONJUNCTION WITH ALL ASSOCIATED SPECIFICATIONS, SCHEDULES & CONTRACT DOCUMENTS.
 - MAKE GOOD ALL AFFECTED SURFACES & FINISHES INCLUDING ITEMS MARKED FOR REMOVAL &/OR RELOCATION.
 - THE CONTRACTOR IS TO ALLOW FOR SAND AND RE-FINISH ALL BRUSHBOX NOMINATED TO BE RE-USED THE WORKS. THIS BRUSHBOX IS TO BE INCORPORATED WHEREVER POSSIBLE WHERE WTM-02 IS NOMINATED.



LOCATION PLAN
1: 2000

A SECTION A-A
A1203
1: 100

Issue	Description	Drawn	Approved	Date
0	ISSUE			09/10/2018

ARM ARCHITECTURE
 LEVEL 11/522 HUNTERS LANE MELBOURNE VICTORIA 3000 AUS
 T 03 8613 1888 F 03 8613 1889
 mail@armarchitecture.com.au
 ABN 22 475 942 329
 www.armarchitecture.com.au

LEGEND - SCOPE
 (THIS LEGEND APPLIES TO ALL NEW CONSTRUCTION PHASE DRAWINGS; DOES NOT APPLY TO EXISTING CONDITIONS)

	AREA SHOWN IN GREY WASH DEPICTS SCOPE OF NEW WORKS
	AREA SHOWN IN WHITE WASH DEPICTS SCOPE OF NEW WORKS
	AREA SURROUNDED BY GREEN DASHED LINES DEPICTS TENDER OPTION

- SOHT GENERAL NOTES**
- ALL DIMENSIONS AND SIZES ARE IN MILLIMETRES.
 - DO NOT SCALE DRAWINGS. USE FIGURED DIMENSIONS ONLY.
 - INFORMATION INDICATED IN THIS DOCUMENT MAY BE CRUCIAL TO THE SAFE AND PROPER FUNCTIONING OF THE SYDNEY OPERA HOUSE. DO NOT ALTER ANY ASPECT WITHOUT WRITTEN PERMISSION.
 - ALL NEW WORKS MUST COMPLY WITH THE SYDNEY OPERA HOUSE BUILDING SERVICES STANDARD SPECIFICATION (BSSS) AND RELEVANT AUSTRALIAN STANDARDS. NEW WORKS MUST ALSO COMPLY WITH THE REQUIREMENTS OF THE BUILDING CODES OF AUSTRALIA.

SOHT COPYRIGHT
 THIS DRAWING AND DESIGN ARE SUBJECT TO COPYRIGHT AND SHALL NOT BE COPIED IN ANY FORM WITH THE WRITTEN PERMISSION OF THE SYDNEY OPERA HOUSE TRUST

Location	North	Status	DEVELOPMENT APPLICATION ISSUE
		Contract	BDM-168
		Dwn	JJF
		Date	2/10/2018
		Scale	1:100 @ 1

Project	BUILDING RENEWAL PROJECT - CONCERT HALL
Title	SECTION A-A

Location	CHVA	Drawing No.	49-BR-ARM01	Sheet	DA3000	Rev.	D	B1
----------	------	-------------	-------------	-------	--------	------	---	----

Sydney Opera House Trust
 GPO Box 4274 Sydney NSW Australia 2001
 Phone +61 2 9550 7541
 email info@sydneyoperahouse.com

Sydney Opera House Trust