

Memo



To: Natasha Homsey, Environmental Assessment Officer – DP&E
From: Jessica Berry, Senior Environmental Consultant – pitt&sherry
Date: 30 August 2018
RE: Gunnedah Solar Farm – Fence Configuration 5

Hi Natasha,

Following a meeting between DP&E, Gunnedah Solar Farm Pty Ltd (Photon Energy/Canadian Solar) and pitt&sherry a new fence configuration (Fence Configuration 5) has been proposed to further mitigate the potential impacts during a flood event.

It was identified that Fence Configuration 4 (as described in the Response to Submissions Report) resulted in flood afflux at location 2a and the change of depth was greater than 50% for the 1955 flood event. As such, Fence Configuration 5 is proposed which extends the drop-down fence at location 2a by a further 200m to the South (See Figure 1).



Figure 1 Fence Configuration 5 - Gunnedah Solar Farm (drop-down fence in red)

Fence Configuration 5 results in changes of depth outside the fence perimeter of less than 9% at a distance of 200m from the fence perimeter.

Figure 2 illustrates the depth percentage change between the fence configuration and the existing flood depths. Location 1a has the highest increase in depth of 28.6% increase, this level is adjacent the fence and at 200m from the fence the depth percentage change reduces to a 9% increase in peak flood depth.

For the majority of locations, the increase in flood depth is less than 5% at a distance of 200m from the fence perimeter.

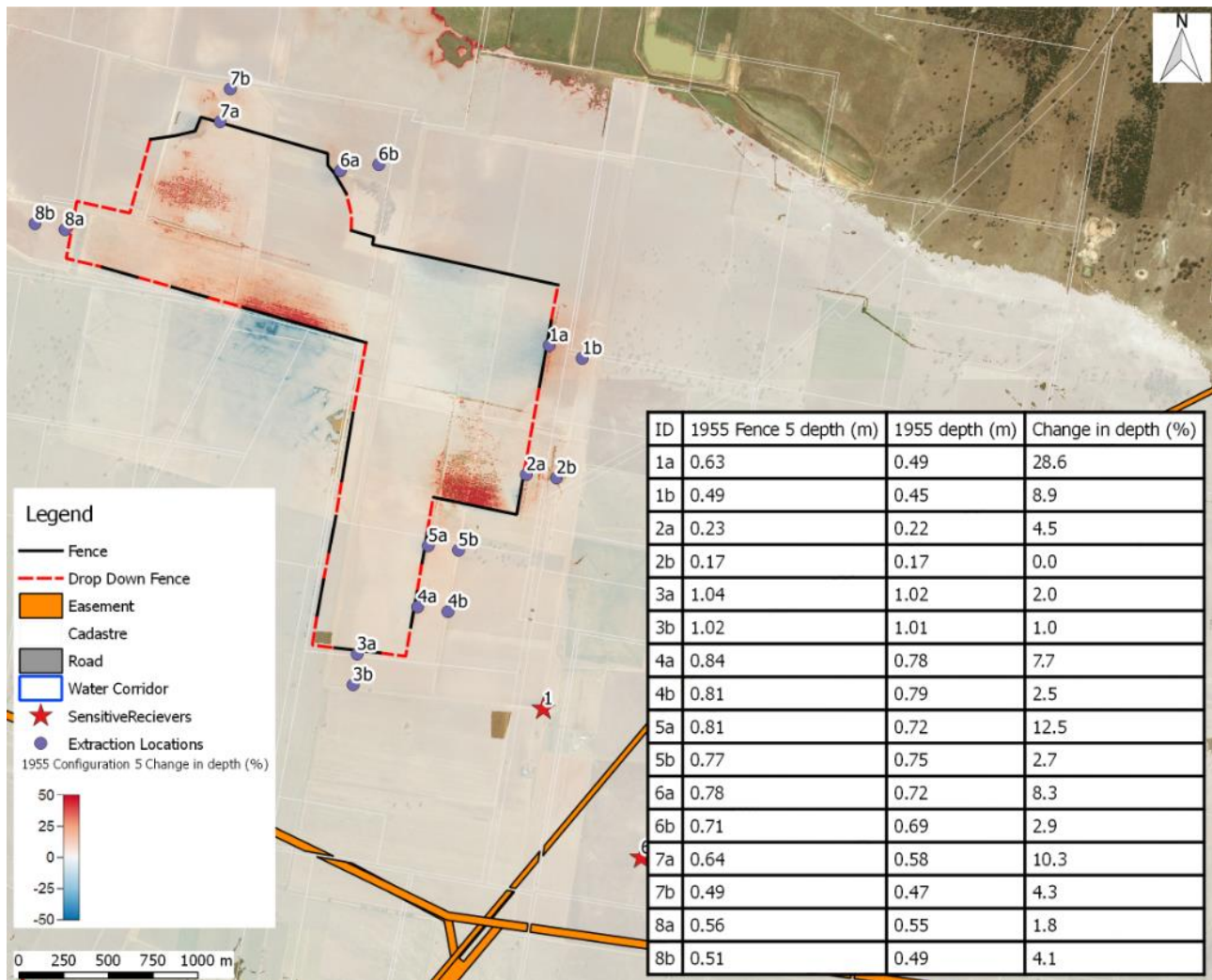


Figure 2 Fence Configuration 5 - Depth percentage change

Jessica Berry