

<b>Map</b>	
22158_rp07_f08b_sampleex_v01	
<b>Date of Export</b>	<b>Map Scale (approx. at A3)</b>
17/01/2023	1:2,000
<b>Author</b>	<b>Approver</b>
MB	DJ
<b>Data Source</b>	
Metromap, Google Maps, Open Street Map, Geoscience Australia	

<b>Legend</b>	
	Site Boundary
	Stage 2 Boundary
	HIL-A Area
	HIL-B Area
	Arcadis 2017 Locations
	ES 2014 Locations

**Figure 8b - ES (2014) & Arcadis (2017) Exceedances**

Stage 2 Redevelopment - Former Corrimal Coke Works, Railway Street, Corrimal, NSW

22158 - Remediation Action Plan

LegPro 70 Pty Ltd ATF LegPro 70 Unit Trust c/- Legacy Property Pty Ltd



<b>Map</b>	
22158_rp09_f09_remext_v01	
<b>Date of Export</b>	<b>Map Scale (approx. at A3)</b>
30/01/2023	1:1,600
<b>Author</b>	<b>Approver</b>
MB	DJ
<b>Data Source</b>	
Metromap, Google Maps, Open Street Map, Geoscience Australia	

<b>Legend</b>	
	Site Boundary
	Stage 2 Boundary
	ADI 1996 Locations
	EnviroRisk 2006 Locations
	ES 2014 Locations
	Arcadis 2017 Locations

**Figure 9 - Estimated Remediation Extent**  
Stage 2 Redevelopment - Former Corrimal Coke Works, Railway Street, Corrimal, NSW  
22158 - Remediation Action Plan  
LegPro 70 Pty Ltd ATF LegPro 70 Unit Trust c/- Legacy Property Pty Ltd



# Appendix B – Tables

Table 1 - Historical Soil Results, Low-Density Residential Land Use Sample Locations

Asbestos	Metals													BTEX						Historical compound grouping				TPH											
	Asbestos fibres	Asbestos Trace Analysis	Arsenic	Cadmium	Chromium (III+IV)	Copper	Lead	Mercury	Nickel	Phosphorus	Cyanide	Sulfate	Tin	Zinc	Benzene	Toluene	Ethylbenzene	meta & para Xylene	ortho Xylene	Xylene Total	Naphthalene	Total PAH	Total OCP	Total PCB	Total VHC	C6-C9	C10-C14	C15-C28	C29-C36						
Comment	Detect	mg/kg	mg/kg	mg/kg	mg/kg	mg/kg	mg/kg	mg/kg	mg/kg	mg/kg	mg/kg	mg/kg	mg/kg	mg/kg	mg/kg	mg/kg	mg/kg	mg/kg	mg/kg	mg/kg	mg/kg	mg/kg	mg/kg	mg/kg	mg/kg	mg/kg	mg/kg	mg/kg	mg/kg						
EQL	Detect	4	-	-	-	-	0.1	-	10	-	2	-	-	-	-	-	-	-	-	1	-	-	-	-	-	-	-	-	-						
NEPM 2013 Table 1A(1) HILs Residential A Soil		100**	20	500**	6,000	300**	40**	400					7,400								300		1												
NEPM 2013 Table 1B(1-4) Generic & Site Specific EIL - Urban Res & Public Open Space*		104		408	210	1116		175					400																						
NEPM 2013 Table 1B(6) ESLs for Urban Res, Coarse Soil >=0m, <2m														50	85	70				105					180**	120**	300	2,800							
NEPM 2013 Table 1B(6) ESLs for Urban Res, Fine Soil >=0m, <2m														65	105	125				45					180**	120**	1,300	5,600							
NEPM 2013 Table 1B(7) Management Limits in Res / Parkland, Coarse Soil																									700**	1,000**	2,500	10,000							
NEPM 2013 Table 1B(7) Management Limits in Res / Parkland, Fine Soil																									800**	1,000**	3,500	10,000							
ANZG 2018 DGV Toxicant values for Sediments (Table 1)			20	1.5	80	65	50	0.15	21				200																						
NEPM 2013 Table 1A(3) Res A/B Soil HSL for Vapour Intrusion, Clay																																			
>=0m, <1m														0.7	480	NL				110	5														
>=1m, <2m														1	NL	NL				310	NL														
>=2m, <4m														2	NL	NL				NL	NL														
>=4m														3	NL	NL				NL	NL														
NEPM 2013 Table 1A(3) Res A/B Soil HSL for Vapour Intrusion, Sand																																			
>=0m, <1m														0.5	160	55				40	3														
>=1m, <2m														0.5	220	NL				60	NL														
>=2m, <4m														0.5	310	NL				95	NL														
>=4m														0.5	540	NL				170	NL														
NEPM 2013 Table 1A(3) Res A/B Soil HSL for Vapour Intrusion, Silt																																			
>=0m, <1m														0.6	390	NL				95	4														
>=1m, <2m														0.7	NL	NL				210	NL														
>=2m, <4m														1	NL	NL				NL	NL														
>=4m														2	NL	NL				NL	NL														
Field ID	Location Code	Description	Sampled Date	Sample Depth (m)	Asbestos fibres	Asbestos Trace Analysis	Arsenic	Cadmium	Chromium (III+IV)	Copper	Lead	Mercury	Nickel	Phosphorus	Cyanide	Sulfate	Tin	Zinc	Benzene	Toluene	Ethylbenzene	meta & para Xylene	ortho Xylene	Xylene Total	Naphthalene	Total PAH	Total OCP	Total PCB	Total VHC	C6-C9	C10-C14	C15-C28	C29-C36		
ADI Limited (1996), Stage 1 Site Investigation Report																																			
S7	1996_ADI_S7	-	ADI February 1996	0.2	-	-	4	<0.5	10	6	9	0.055	6	-	<0.1	130	<1	9	<0.05	<0.05	<0.05	-	-	<0.15	-	ND	-	-	-	-	<20	<20	<50	<50	
S7	1996_ADI_S7	-	ADI February 1996	0.7	-	-	5.5	<0.5	5	13	12	0.02	6.5	-	<0.1	110	<1	25	<0.05	0.14	0.09	-	-	0.2	-	5.3	-	-	-	-	<20	<20	<50	<50	
B39	1996_ADI_B39	-	ADI February 1996	1.5	-	-	6.5	<0.5	13	10	20	0.02	6	-	-	-	<1	24	<0.05	<0.05	<0.05	-	-	<0.15	-	0.31	-	-	-	-	<20	<20	<50	<50	
EnviroRisk (2006), Phase 2 Environmental (Site Contamination) Assessment																																			
BH25	2006_ENVR_BH25	Judgemental Samples	EnviroRisk Dec 2005	0.5	-	-	<5	<1	6	11	7	<0.1	3	-	-	-	<5	66	<0.2	<0.2	<0.2	<0.2	<0.2	-	-	-	-	-	-	-	-	<2	<50	<100	<100
BH25	2006_ENVR_BH25	Judgemental Samples	EnviroRisk Dec 2005	1	-	-	7	<1	18	22	7	<0.1	9	-	-	-	<5	42	<0.2	<0.2	<0.2	<0.2	<0.2	-	-	-	-	-	-	-	<2	<50	<100	<100	
Environmental Strategies (2014), Phase 2 Detailed Site Investigation																																			
TP15	2014_ES_TP15	Area C	2014	1.1	-	-	<4	<0.4	23	14	15	<0.1	7	-	-	-	-	20	<0.2	<0.5	<1	<2	<1	<3	<1	-	-	-	-	-	<25	<50	<100	<100	
Acadis (2017a), Additional Environmental Assessment																																			
TP13	2017_ARC_TP13	-	10-Jan-17	0.5	ND	-	<4	<0.4	17	15	15	<0.1	6	-	-	-	-	43	<0.2	<0.5	<1	<2	<1	<1	-	-	-	-	-	-	<25	<50	<100	<100	
TP13	2017_ARC_TP13	-	10-Jan-17	4.5	ND	-	5	<0.4	11	25	18	<0.1	12	760	-	-	-	76	<0.2	<0.5	<1	<2	<1	<1	-	-	-	-	-	<25	<50	130	<100		
TP14	2017_ARC_TP14	-	10-Jan-17	1	ND	-	<4	<0.4	4	18	10	<0.1	10	-	<4	-	-	39	<0.2	<0.5	<1	<2	<1	<1	-	-	-	-	-	<25	<50	570	350		
TP15	2017_ARC_TP15	-	11-Jan-17	0.5	ND	-	<4	<0.4	10	17	12	<0.1	8	-	-	-	-	39	<0.2	<0.5	<1	<2	<1	<1	-	-	-	-	-	<25	<50	290	150		
SED D1L1	2017_ARC_SED D1L1	-	13-Jan-17	Sediment	-	-	5	<0.4	23	43	43	<0.1	17	570	-	-	-	140	-	-	-	-	-	-	-	-	-	-	-	<25	<50	<100	<100		

\*Generic & site-specific EIL values adopted from Arcadis (2019) RAP Appendix C, Table 2.  
\*\*Chromium III+IV HIL values adopted from Arcadis (2019) RAP Appendix C, Table 6.

**Comments**  
 ND - No visible or reported asbestos detected within top 0.1m of the ground surface  
 AF/FA - Defined as friable asbestos material <7mm or able to be pulverised by hand pressure, such as severely weathered ACM and asbestos in the form of loose fibrous material (i.e., insulation products).  
 Bonded ACM >7mm - Defined as "Products or materials that contain asbestos in an inert bound matrix such as cement or resin. Here taken to be sound material, even as fragments and fitting through a 7 x 7mm sieve.  
 #1 Carcinogenic PAHs: HIL based on 8 carc. PAHs & their TEFs (ref to BaP ref Schedule 7) BaP TEQ calc by multiplying the conc of each carc. PAH in sample by its BaP TEF (ref Table 1A(1)) & summing  
 #2 Arsenic: HIL assumes 70% oral bioavailability. Site-specific bioavailability maybe important and should be considered where appropriate (refer Schedule B7).  
 #3 Lead: HILs A,B,C based on blood lead models (IEUBK & HIL D on adult lead model for where 50% bioavailability considered. Site-specific bioavailability should be considered where appropriate.  
 #4 Elemental mercury: HIL does not address elemental mercury, a site specific assessment should be considered if elemental mercury is present, or suspected to be present.  
 #5 PCBs: HIL refers to non-dioxin like PCBs only. Where PCB source is known, or suspected at a site, a site-specific assessment of exposure to all PCBs (inc dioxin like PCBs) should be undertaken  
 #6 Aged values apply to arsenic contamination present in soil > 2 years. Refer Schedule B5c for < 2 years.  
 #7 To obtain F1 subtract the sum of BTEX concentrations from the C6 - C10 fraction.  
 #8 ERRATA Updated 30 April 2014. Naphthalene should not be subtracted.  
 #9 Errata 30 April 2014. Naphthalene should not be subtracted from >C  
 #10 Moderate reliability. To obtain F1 subtract the sum of BTEX concentrations from the C6 - C10 fraction.  
 #11 Separate management limits for BTEX & naphthalene are not available hence should not be subtracted from the relevant fractions to obtain F1 & F2  
 #12 To obtain F2 subtract naphthalene from the >C10 - C16 fraction.  
 NL - Derived soil HSL exceeds soil saturation concentration, non-limiting

Table 1 - Historical Soil Results, Low-Density Residential Land Use Sample Locations

	TRH							PAHs																											
	C10-C40 (sum of total)	C6-C10 (F1)	C6-C10 less BTEX (F1)	C10-C16 (F2)	F2-NAPHTHALENE	C16-C34 (F3)	C34-C40 (F4)	Total Positive PAHs	Benzo(a)pyrene TEQ (LOR)	Benzo(a)pyrene TEQ (Half LOR)	Acenaphthene	Acenaphthylene	Anthracene	Benzo(b)anthracene	Benzo(e)pyrene	Carcinogenic PAHs as B(a)P TE	Benzo(g,h,i)perylene	Benzo(k)fluoranthene	Benzo(b,j)fluoranthene	Benzo(k)fluoranthene	Benzo(b)fluoranthene	Benzo(a,h)anthracene	Chrysene	Dibenz(a,h)anthracene	Fluoranthene	Fluorene	Indeno(1,2,3-c)pyrene	Naphthalene	Phenanthrene	Pyrene					
EQL	50	25	25	50	50	100	100	mg/kg	mg/kg	mg/kg	mg/kg	mg/kg	mg/kg	mg/kg	mg/kg	mg/kg	mg/kg	mg/kg	mg/kg	mg/kg	mg/kg	mg/kg	mg/kg	mg/kg	mg/kg	mg/kg	mg/kg	mg/kg	mg/kg	mg/kg	mg/kg				
NEPM 2013 Table 1A(1) HILs Residential A Soil								300	3 <sup>11</sup>																										
NEPM 2013 Table 1B(1-4) Generic & Site Specific EIL - Urban Res & Public Open Space*																																170			
NEPM 2013 Table 1B(6) ESLs for Urban Res, Coarse Soil >=0m, <2m			180 <sup>11</sup>	120 <sup>11</sup>	120 <sup>11</sup>	300	2,800								0.7																				
NEPM 2013 Table 1B(6) ESLs for Urban Res, Fine Soil >=0m, <2m			180 <sup>11</sup>	120 <sup>11</sup>	120 <sup>11</sup>	1,300	5,600								0.7																				
NEPM 2013 Table 1B(7) Management Limits in Res / Parkland, Coarse Soil		700 <sup>11</sup>		1,000 <sup>11</sup>		2,500	10,000																												
NEPM 2013 Table 1B(7) Management Limits in Res / Parkland, Fine Soil		800 <sup>11</sup>		1,000 <sup>11</sup>		3,500	10,000																												
ANZG 2018 DGV Toxicant values for Sediments (Table 1)	0.28							10																											
NEPM 2013 Table 1A(3) Res A/B Soil HSL for Vapour Intrusion, Clay			50 <sup>12</sup>		280 <sup>12</sup>																														
>=0m, <1m			90		NL																												5		
>=1m, <2m			150		NL																												NL		
>=2m, <4m			290		NL																												NL		
>=4m																																	NL		
NEPM 2013 Table 1A(3) Res A/B Soil HSL for Vapour Intrusion, Sand			45 <sup>12</sup>		110 <sup>12</sup>																														
>=0m, <1m			70		240																													3	
>=1m, <2m			110		440																													NL	
>=2m, <4m			200		NL																													NL	
>=4m																																		NL	
NEPM 2013 Table 1A(3) Res A/B Soil HSL for Vapour Intrusion, Silt			40 <sup>12</sup>		230 <sup>12</sup>																														
>=0m, <1m			65		NL																														4
>=1m, <2m			100		NL																													NL	
>=2m, <4m			190		NL																													NL	
>=4m																																		NL	
Field ID	Location Code	Description	Sampled Date	Sample Depth (m)																															
ADI Limited (1996), Stage 1 Site Investigation Report																																			
S7	1996_ADI_S7	-	ADI February 1996	0.2	-	-	-	-	-	-	-	-	-	-	-	-	-	-	-	-	-	-	-	-	-	-	-	-	-	-	-	-			
S7	1996_ADI_S7	-	ADI February 1996	0.7	-	-	-	-	-	-	-	-	-	-	-	-	-	-	-	-	-	-	-	-	-	-	-	-	-	-	-	-			
B39	1996_ADI_B39	-	ADI February 1996	1.5	-	-	-	-	-	-	-	-	-	-	-	-	-	-	-	-	-	-	-	-	-	-	-	-	-	-	-	-			
EnviroRisk (2006), Phase 2 Environmental (Site Contamination) Assessment																																			
BH25	2006_ENVR_BH25	Judgemental Samples	EnviroRisk Dec 2005	0.5	-	-	-	-	-	-	-	-	-	-	-	-	-	-	-	-	-	-	-	-	-	-	-	-	-	-	-	-			
BH25	2006_ENVR_BH25	Judgemental Samples	EnviroRisk Dec 2005	1	-	-	-	-	-	-	-	-	-	-	-	-	-	-	-	-	-	-	-	-	-	-	-	-	-	-	-	-			
Environmental Strategies (2014), Phase 2 Detailed Site Investigation																																			
TP15	2014_ES_TP15	Area C	2014	1.1	-	<25	<25	<50	<50	<100	<100	0	ND	-	<0.1	<0.1	<0.1	<0.1	<0.1	<0.5	<0.622	<0.1	-	-	-	<0.2	<0.1	<0.1	<0.1	<0.1	<0.1	<0.1			
Acadis (2017a), Additional Environmental Assessment																																			
TP13	2017_ARC_TP13	-	10-Jan-17	0.5	120	<25	<25	<50	<50	120	<100	1.1	<0.5	-	<0.1	<0.1	<0.1	<0.1	<0.1	<0.05	0.0885	<0.1	-	-	-	-	<0.2	0.3	<0.1	0.1	<0.1	<0.1	0.6	0.1	
TP13	2017_ARC_TP13	-	10-Jan-17	4.5	180	<25	<25	<50	<50	180	<100	2.3	<0.5	-	<0.1	<0.1	<0.1	<0.1	<0.1	<0.05	0.1055	<0.1	-	-	-	-	<0.2	0.5	<0.1	0.2	0.1	<0.1	<0.1	1	0.2
TP14	2017_ARC_TP14	-	10-Jan-17	1	990	<25	<25	<50	<50	810	190	21	2.5	-	<0.1	<0.1	0.2	2.6	1.3	2.265	0.8	-	-	-	-	2	6.7	0.6	0.6	0.2	0.3	<1-0.3	3.2	1.9	
TP15	2017_ARC_TP15	-	11-Jan-17	0.5	380	<25	<25	<50	<50	380	<100	4.2	<0.5	-	<0.1	<0.1	0.1	0.2	0.06	0.1425	0.1	-	-	-	-	0.2	0.7	<0.1	0.4	0.1	<0.1	<1-0.1	1.8	0.4	
SED D1L1	2017_ARC_SED D1L1	-	13-Jan-17	Sediment	<50	<25	-	<50	-	<100	<100	0.1	<0.5	-	<0.1	<0.1	<0.1	<0.1	<0.1	<0.05	<0.172	<0.1	-	-	-	-	<0.2	<0.1	<0.1	<0.1	<0.1	<0.1	<0.1	0.1	<0.1

\*Generic & site-specific EIL values adopted from Arcadis (2019) RAP Appendix C, Table 2.  
\*\*Chromium III+IV HIL values adopted from Arcadis (2019) RAP Appendix C, Table 6.  
NL - Derived soil HSL exceeds soil saturation concentration, non-limiting

Table 1 - Historical Soil Results, Low-Density Residential Land Use Sample Locations

	Phenolic Compounds										Organochlorine Pesticides																																	
	Phenolics Total	4,4-DDE	a-BHC	Aldrin	Aldrin + Dieldrin	b-BHC	Chlordane (cis)	Chlordane (trans)	d-BHC	DDD	DDT	DDT+DDE+DDD	Dieldrin	Endosulfan I	Endosulfan II	Endosulfan sulphate	Endrin	Endrin aldehyde	Endrin ketone	g-BHC (Lindane)	Hepachlor	Hepachlor epoxide	Methoxychlor	Toxaphene	Toxaphion	Azinophos methyl	Boisstar (Sulprofos)	Chlorfenvinphos	Chlorpyrifos	Chlorpyrifos-methyl	Coumaphos	Demeton-O	Demeton-S	Diazinon	Dichlorvos	Dimethoate	Disulfoton	Ethion						
EQL	5	0.1	0.1	0.1	0.2	0.1	0.1	0.1	0.1	0.1	0.1	0.1	0.1	0.1	0.1	0.1	0.1	0.05	0.1	0.1	0.1	0.1	1	0.2	0.1	0.2	0.2	0.1	0.1	2	0.2	0.2	0.1	0.1	0.1	0.1	0.1	0.1	0.1					
NEPM 2013 Table 1A(1) HILs Residential A Soil	3000				7																																							
NEPM 2013 Table 1B(1-4) Generic & Site Specific EIL - Urban Res & Public Open Space*											180																																	
NEPM 2013 Table 1B(6) ESLs for Urban Res, Coarse Soil >=0m, <2m																																												
NEPM 2013 Table 1B(6) ESLs for Urban Res, Fine Soil >=0m, <2m																																												
NEPM 2013 Table 1B(7) Management Limits in Res / Parkland, Coarse Soil																																												
NEPM 2013 Table 1B(7) Management Limits in Res / Parkland, Fine Soil																																												
ANZG 2018 DGV Toxicant values for Sediments (Table 1)		0.001				0.0045			0.0035	0.001		0.0028				0.0027			0.0009																									
NEPM 2013 Table 1A(3) Res A/B Soil HSL for Vapour Intrusion, Clay																																												
>=0m, <1m																																												
>=1m, <2m																																												
>=2m, <4m																																												
>=4m																																												
NEPM 2013 Table 1A(3) Res A/B Soil HSL for Vapour Intrusion, Sand																																												
>=0m, <1m																																												
>=1m, <2m																																												
>=2m, <4m																																												
>=4m																																												
NEPM 2013 Table 1A(3) Res A/B Soil HSL for Vapour Intrusion, Silt																																												
>=0m, <1m																																												
>=1m, <2m																																												
>=2m, <4m																																												
>=4m																																												
Field ID	Location Code	Description	Sampled Date	Sample Depth (m)	Phenolics Total	4,4-DDE	a-BHC	Aldrin	Aldrin + Dieldrin	b-BHC	Chlordane (cis)	Chlordane (trans)	d-BHC	DDD	DDT	DDT+DDE+DDD	Dieldrin	Endosulfan I	Endosulfan II	Endosulfan sulphate	Endrin	Endrin aldehyde	Endrin ketone	g-BHC (Lindane)	Hepachlor	Hepachlor epoxide	Methoxychlor	Toxaphene	Toxaphion	Azinophos methyl	Boisstar (Sulprofos)	Chlorfenvinphos	Chlorpyrifos	Chlorpyrifos-methyl	Coumaphos	Demeton-O	Demeton-S	Diazinon	Dichlorvos	Dimethoate	Disulfoton	Ethion		
<b>ADI Limited (1996), Stage 1 Site Investigation Report</b>																																												
S7	1996_ADI_S7	-	ADI February 1996	0.2	-	-	-	-	-	-	-	-	-	-	-	-	-	-	-	-	-	-	-	-	-	-	-	-	-	-	-	-	-	-	-	-	-	-	-	-	-	-	-	-
S7	1996_ADI_S7	-	ADI February 1996	0.7	-	-	-	-	-	-	-	-	-	-	-	-	-	-	-	-	-	-	-	-	-	-	-	-	-	-	-	-	-	-	-	-	-	-	-	-	-	-	-	-
B39	1996_ADI_B39	-	ADI February 1996	1.5	-	-	-	-	-	-	-	-	-	-	-	-	-	-	-	-	-	-	-	-	-	-	-	-	-	-	-	-	-	-	-	-	-	-	-	-	-	-	-	
<b>EnviroRisk (2006), Phase 2 Environmental (Site Contamination) Assessment</b>																																												
BH25	2006_ENVR_BH25	Judgemental Samples	EnviroRisk Dec 2005	0.5	-	-	-	-	-	-	-	-	-	-	-	-	-	-	-	-	-	-	-	-	-	-	-	-	-	-	-	-	-	-	-	-	-	-	-	-	-	-	-	-
BH25	2006_ENVR_BH25	Judgemental Samples	EnviroRisk Dec 2005	1	-	-	-	-	-	-	-	-	-	-	-	-	-	-	-	-	-	-	-	-	-	-	-	-	-	-	-	-	-	-	-	-	-	-	-	-	-	-	-	-
<b>Environmental Strategies (2014), Phase 2 Detailed Site Investigation</b>																																												
TP15	2014_ES_TP15	Area C	2014	1.1	<5	-	-	-	-	-	-	-	-	-	-	-	-	-	-	-	-	-	-	-	-	-	-	-	-	-	-	-	-	-	-	-	-	-	-	-	-	-	-	
<b>Acadis (2017a), Additional Environmental Assessment</b>																																												
TP13	2017_ARC_TP13	-	10-Jan-17	0.5	-	-	-	-	-	-	-	-	-	-	-	-	-	-	-	-	-	-	-	-	-	-	-	-	-	-	-	-	-	-	-	-	-	-	-	-	-	-		
TP13	2017_ARC_TP13	-	10-Jan-17	4.5	-	<0.1	<0.1	<0.1	<0.2	<0.1	<0.1	<0.1	<0.1	<0.1	<0.1	<0.1	<0.1	<0.1	<0.1	<0.1	<0.1	<0.1	<0.1	<0.1	<0.1	<0.1	<0.1	<0.1	<0.1	<0.1	<0.1	<0.1	<0.1	<0.1	<0.1	<0.1	<0.1	<0.1	<0.1	<0.1	<0.1	<0.1	<0.1	<0.1
TP14	2017_ARC_TP14	-	10-Jan-17	1	-	-	-	-	-	-	-	-	-	-	-	-	-	-	-	-	-	-	-	-	-	-	-	-	-	-	-	-	-	-	-	-	-	-	-	-	-	-	-	
TP15	2017_ARC_TP15	-	11-Jan-17	0.5	-	-	-	-	-	-	-	-	-	-	-	-	-	-	-	-	-	-	-	-	-	-	-	-	-	-	-	-	-	-	-	-	-	-	-	-	-	-		
SED D1L1	2017_ARC_SED D1L1	-	13-Jan-17	Sediment	-	-	-	-	-	-	-	-	-	-	-	-	-	-	-	-	-	-	-	-	-	-	-	-	-	-	-	-	-	-	-	-	-	-	-	-	-	-		

\*Generic & site-specific EIL values adopted from Arcadis (2019) RAP Appendix C, Table 2.  
\*\*Chromium III+IV HIL values adopted from Arcadis (2019) RAP Appendix C, Table 6.

Table 1 - Historical Soil Results, Low-Density Residential Land Use Sample Locations

	Organophosphorous Pesticides														Polychlorinated Biphenyls										Halogenated Benzenes										
	Ethoprop	Fenitrothion	Fensulfothion	Fenthion	EPN	Malathion	Merphos	Methyl parathion	Mevinphos (Phosdrin)	Monocrotophos	Naled (Dibrom)	Omethoate	Parathion	Phorate	Priniphos-methyl	Pyrazophos	Ronnel	Terbufos	Trichloronate	Tetrachlorvinphos	Bromophos-ethyl	Arochlor 1016	Arochlor 1221	Arochlor 1232	Arochlor 1242	Arochlor 1248	Arochlor 1254	Arochlor 1260	PCBs (Sum of Total)	Hexachlorobenzene					
EQL	0.2	0.1	0.2	0.2	0.2	0.1	0.2	0.2	0.2	2	0.2	2	0.1	0.2	0.2	0.1	0.2	0.2	0.2	0.2	0.1	0.1	0.1	0.1	0.1	0.1	0.1	0.1	0.1	0.1	0.1				
NEPM 2013 Table 1A(1) HILs Residential A Soil																																			
NEPM 2013 Table 1B(1-4) Generic & Site Specific EIL - Urban Res & Public Open Space*																																			
NEPM 2013 Table 1B(6) ESLs for Urban Res, Coarse Soil >=0m, <2m																																			
NEPM 2013 Table 1B(6) ESLs for Urban Res, Fine Soil >=0m, <2m																																			
NEPM 2013 Table 1B(7) Management Limits in Res / Parkland, Coarse Soil																																			
NEPM 2013 Table 1B(7) Management Limits in Res / Parkland, Fine Soil																																			
ANZG 2018 DGV Toxicant values for Sediments (Table 1)																																			
NEPM 2013 Table 1A(3) Res A/B Soil HSL for Vapour Intrusion, Clay																																			
>=0m, <1m																																			
>=1m, <2m																																			
>=2m, <4m																																			
>=4m																																			
NEPM 2013 Table 1A(3) Res A/B Soil HSL for Vapour Intrusion, Sand																																			
>=0m, <1m																																			
>=1m, <2m																																			
>=2m, <4m																																			
>=4m																																			
NEPM 2013 Table 1A(3) Res A/B Soil HSL for Vapour Intrusion, Silt																																			
>=0m, <1m																																			
>=1m, <2m																																			
>=2m, <4m																																			
>=4m																																			
Field ID	Location Code	Description	Sampled Date	Sample Depth (m)	Ethoprop	Fenitrothion	Fensulfothion	Fenthion	EPN	Malathion	Merphos	Methyl parathion	Mevinphos (Phosdrin)	Monocrotophos	Naled (Dibrom)	Omethoate	Parathion	Phorate	Priniphos-methyl	Pyrazophos	Ronnel	Terbufos	Trichloronate	Tetrachlorvinphos	Bromophos-ethyl	Arochlor 1016	Arochlor 1221	Arochlor 1232	Arochlor 1242	Arochlor 1248	Arochlor 1254	Arochlor 1260	PCBs (Sum of Total)	Hexachlorobenzene	
<b>ADI Limited (1996), Stage 1 Site Investigation Report</b>																																			
S7	1996_ADI_S7	-	ADI February 1996	0.2	-	-	-	-	-	-	-	-	-	-	-	-	-	-	-	-	-	-	-	-	-	-	-	-	-	-	-	-	-	-	
S7	1996_ADI_S7	-	ADI February 1996	0.7	-	-	-	-	-	-	-	-	-	-	-	-	-	-	-	-	-	-	-	-	-	-	-	-	-	-	-	-	-	-	
B39	1996_ADI_B39	-	ADI February 1996	1.5	-	-	-	-	-	-	-	-	-	-	-	-	-	-	-	-	-	-	-	-	-	-	-	-	-	-	-	-	-	-	
<b>Envirorisk (2006), Phase 2 Environmental (Site Contamination) Assessment</b>																																			
BH25	2006_ENVR_BH25	Judgemental Samples	Envirorisk Dec 2005	0.5	-	-	-	-	-	-	-	-	-	-	-	-	-	-	-	-	-	-	-	-	-	-	-	-	-	-	-	-	-	-	
BH25	2006_ENVR_BH25	Judgemental Samples	Envirorisk Dec 2005	1	-	-	-	-	-	-	-	-	-	-	-	-	-	-	-	-	-	-	-	-	-	-	-	-	-	-	-	-	-	-	
<b>Environmental Strategies (2014), Phase 2 Detailed Site Investigation</b>																																			
TP15	2014_ES_TP15	Area C	2014	1.1	-	-	-	-	-	-	-	-	-	-	-	-	-	-	-	-	-	-	-	-	-	-	-	-	-	-	-	-	-	-	
<b>Acadis (2017a), Additional Environmental Assessment</b>																																			
TP13	2017_ARC_TP13	-	10-Jan-17	0.5	-	-	-	-	-	-	-	-	-	-	-	-	-	-	-	-	-	-	-	-	-	-	-	-	-	-	-	-	-	-	
TP13	2017_ARC_TP13	-	10-Jan-17	4.5	-	<0.1	-	-	-	<0.1	-	-	-	-	-	-	<0.1	-	-	-	<0.1	-	-	-	<0.1	<0.1	<0.1	<0.1	<0.1	<0.1	<0.1	<0.1	<0.1	<0.1	<0.1
TP14	2017_ARC_TP14	-	10-Jan-17	1	-	-	-	-	-	-	-	-	-	-	-	-	-	-	-	-	-	-	-	-	-	-	-	-	-	-	-	-	-	-	-
TP15	2017_ARC_TP15	-	11-Jan-17	0.5	-	-	-	-	-	-	-	-	-	-	-	-	-	-	-	-	-	-	-	-	-	-	-	-	-	-	-	-	-	-	-
SED D1L1	2017_ARC_SED D1L1	-	13-Jan-17	Sediment	-	-	-	-	-	-	-	-	-	-	-	-	-	-	-	-	-	-	-	-	-	-	-	-	-	-	-	-	-	-	-

\*Generic & site-specific EIL values adopted from Arcadis (2019) RAP Appendix C, Table 2.  
\*\*Chromium III+IV HIL values adopted from Arcadis (2019) RAP Appendix C, Table 6.







Table 2 - Historical Soil Results, Medium-High Density Residential Land Use Sample Locations



	Asbestos		Metals																	BTEX					Historical compound grouping										
	Asbestos ID in Soil	Asbestos Trace Analysis	Arsenic	Antimony	Beryllium	Cadmium	Chromium (III+VI)	Cobalt	Copper	Lead	Mercury	Molybdenum	Nickel	Phosphorus	Selenium	Silver	Vanadium	Cyanide	Fluoride	Sulfate	Tin	Zinc	Benzene	Toluene	Ethylbenzene	meta & para Xylene	ortho Xylene	Xylene Total	Naphthalene	Total PAH	Total OCP	Total PCB	Total VHC		
	Comment	Detect	mg/kg	mg/kg	mg/kg	mg/kg	mg/kg	mg/kg	mg/kg	mg/kg	mg/kg	mg/kg	mg/kg	mg/kg	mg/kg	mg/kg	mg/kg	mg/kg	mg/kg	mg/kg	mg/kg	mg/kg	mg/kg	mg/kg	mg/kg	mg/kg	mg/kg	mg/kg	mg/kg	mg/kg	mg/kg	mg/kg	mg/kg		
EOL		Detect			1						0.1																								
NEPM 2013 Table 1A(1) HILs Residential B Soil			500			150	500**		30,000	1,200	120	1,200		10	5	2	5																		
NEPM 2013 Table 7 HSLs for Asbestos in Soil - Residential B Soil																																			
NEPM 2013 Table 1B(1-4) Generic & Site Specific EIL - Urban Res & Public Open Space*			104			408		210	1,116			175																							
NEPM 2013 Table 1B(6) ESLs for Urban Res, Coarse Soil >=0m, <2m																							50	85	70			105							
NEPM 2013 Table 1B(6) ESLs for Urban Res, Fine Soil >=0m, <2m																							65	105	125			45							
NEPM 2013 Table 1B(7) Management Limits in Res / Parkland, Coarse Soil																																			
NEPM 2013 Table 1B(7) Management Limits in Res / Parkland, Fine Soil																																			
ANZG 2018 DGV Toxicant values for Sediments (Table 1)			20			1.5	80		65	50	0.15	21																							
NEPM 2013 Table 1A(3) Res A/B Soil HSL for Vapour Intrusion, Clay																																			
>=0m, <1m																						0.7	480	NL			110	5							
>=1m, <2m																						1	NL	NL			310	NL							
>=2m, <4m																						2	NL	NL			NL	NL							
>=4m																						3	NL	NL			NL	NL							
NEPM 2013 Table 1A(3) Res A/B Soil HSL for Vapour Intrusion, Sand																																			
>=0m, <1m																						0.5	160	55			40	3							
>=1m, <2m																						0.5	220	NL			60	NL							
>=2m, <4m																						0.5	310	NL			95	NL							
>=4m																						0.5	540	NL			170	NL							
NEPM 2013 Table 1A(3) Res A/B Soil HSL for Vapour Intrusion, Silt																																			
>=0m, <1m																						0.6	390	NL			95	4							
>=1m, <2m																						0.7	NL	NL			210	NL							
>=2m, <4m																						1	NL	NL			NL	NL							
>=4m																						2	NL	NL			NL	NL							

\*Generic & site-specific EIL values adopted from Arcadis (2019) RAP Appendix C, Table 2.  
\*\*Chromium III+VI HIL values adopted from Arcadis (2019) RAP Appendix C, Table 6.

**Comments**  
 ND - No asbestos detected at the laboratory limit of reporting (0.1 g/kg)  
 #1 Carcinogenic PAHs: HIL based on 8 carc. PAHs & their TEFs (ref to BaP ref Schedule 7) BaP TEQ calc: by multiplying the conc of each carc. PAH in sample by its BaP TEF (ref Table 1A(1)) & summing  
 #2 Arsenic: HIL assumes 70% oral bioavailability. Site-specific bioavailability maybe important and should be considered where appropriate (refer Schedule B7).  
 #3 Lead: HILs A,B,C based on blood lead models (IEUBK & HIL D on adult lead model for where 50% bioavailability considered. Site-specific bioavailability should be considered where appropriate.  
 #4 Elemental mercury: HIL does not address elemental mercury, a site specific assessment should be considered if elemental mercury is present, or suspected to be present.  
 #5 PCBs: HIL refers to non-dioxin like PCBs only. Where PCB source is known, or suspected at a site, a site-specific assessment of exposure to all PCBs (inc dioxin like PCBs) should be undertaken  
 #6 Aged values apply to arsenic contamination present in soil > 2 years. Refer Schedule B5c for < 2 years.  
 #7 To obtain F1 subtract the sum of BTEX concentrations from the C6 - C10 fraction.  
 #8 ERRATA Updated 30 April 2014. Naphthalene should not be subtracted.  
 #9 Errata 30 April 2014. Naphthalene should not be subtracted from >C  
 #10 Moderate reliability. To obtain F1 subtract the sum of BTEX concentrations from the C6 - C10 fraction.  
 #11 Separate management limits for BTEX & naphthalene are not available hence should not be subtracted from the relevant fractions to obtain F1 & F2  
 #12 To obtain F2 subtract naphthalene from the >C10 - C16 fraction.  
 NL - Derived soil HSL exceeds soil saturation concentration, non-limiting







Table 2 - Historical Soil Results, Medium-High Density Residential Land Use Sample Locations

Field ID	Location Code	Description	Sampled Date	Sample Depth (m)	TPH				TRH					PAH/Phenols																				
					C6-C9	C10-C14	C15-C28	C29-C36	Total Petroleum Hydrocarbons	C10-C40 (sum of total)	C6-C10	C6-C10 less BTEX (F1)	C10-C16	F2-NAPHTHALENE	C16-C34	C34-C40	Total Positive PAHs	Benzo(a)pyrene TEQ (LOR)	Benzo(a)pyrene TEQ (Half LOR)	Benzo(a)pyrene TEQ (Half LOR)	Acenaphthene	Acenaphthylene	Anthracene	Benzo(b)anthracene	Benzo(a)pyrene	Carcinogenic PAHs as B(a)P TFE	Benzo(g,h,i)perylene	Benzo(b)fluoranthene	Benzo(k)fluoranthene	Benzo(e)fluoranthene	Benzo(a,h)anthracene	Chrysene	Dibenz(a,h)anthracene	Fluorene
EQL																																		
NEPM 2013 Table 1A(1) HILs Residential B Soil																																		
NEPM 2013 Table 7 HSLs for Asbestos in Soil - Residential B Soil																																		
NEPM 2013 Table 1B(1-4) Generic & Site Specific EIL - Urban Res & Public Open Space*																																		
NEPM 2013 Table 1B(6) ESLs for Urban Res, Coarse Soil >=0m, <2m																																		
NEPM 2013 Table 1B(6) ESLs for Urban Res, Fine Soil >=0m, <2m																																		
NEPM 2013 Table 1B(7) Management Limits in Res / Parkland, Coarse Soil																																		
NEPM 2013 Table 1B(7) Management Limits in Res / Parkland, Fine Soil																																		
ANZG 2018 DGV Toxicant values for Sediments (Table 1)																																		
NEPM 2013 Table 1A(3) Res A/B Soil HSL for Vapour Intrusion, Clay																																		
>=0m, <1m																																		
>=1m, <2m																																		
>=2m, <4m																																		
>=4m																																		
NEPM 2013 Table 1A(3) Res A/B Soil HSL for Vapour Intrusion, Sand																																		
>=0m, <1m																																		
>=1m, <2m																																		
>=2m, <4m																																		
>=4m																																		
NEPM 2013 Table 1A(3) Res A/B Soil HSL for Vapour Intrusion, Silt																																		
>=0m, <1m																																		
>=1m, <2m																																		
>=2m, <4m																																		
>=4m																																		
Arcadis (2018), Additional Environmental Assessment - Production Area																																		
ABH4	2018_ARC_ABH4	-	28-Nov-17	0.5	<25	<50	<100	<100	<50	-	-	-	-	-	1.1	<0.5	-	<0.1	<0.1	<0.1	<0.1	<0.05	-	<0.1	-	-	-	-	-	0.1	<0.1	0.1	<0.1	
ABH4	2018_ARC_ABH4	-	28-Nov-17	1.5	<25	<50	<100	<100	<50	-	-	-	-	-	2.1	0.12	-	<0.1	<0.1	<0.1	0.1	0.05	-	<0.1	-	-	-	-	0.3	<0.1	0.2	<0.1		
ABH4	2018_ARC_ABH4	-	28-Nov-17	3	<25	<50	<100	<100	<50	-	-	-	-	-	<0.05	<0.5	-	<0.1	<0.1	<0.1	<0.1	<0.05	-	<0.1	-	-	-	-	<0.1	<0.1	<0.1	<0.1		
Arcadis (2018), Flue, Stack and Powerhouse Assessment																																		
SS3	2018_ARC_SS3	SS3	19-Feb-18	-	<25	51	690	830	-	1800	<25	-	64	-	1300	400	-	-	-	-	-	-	-	-	-	-	-	-	-	-	-	-		
SS2	2018_ARC_SS2	SS2	19-Feb-18	-	-	-	-	-	-	-	-	-	-	-	-	-	-	-	-	-	-	-	-	-	-	-	-	-	-	-	-	-		
SS3	2018_ARC_SS3	SS3	19-Feb-18	-	-	-	-	-	-	-	-	-	-	-	-	-	-	-	-	-	-	-	-	-	-	-	-	-	-	-	-	-		
SS4	2018_ARC_SS4	SS4	19-Feb-18	-	-	-	-	-	-	-	-	-	-	-	-	-	-	-	-	-	-	-	-	-	-	-	-	-	-	-	-	-		
Reditus 2020 Data Gap Investigation																																		
RCTP2_1.0	2020_Red_RCTP2	-	25-Mar-20	1	-	-	-	-	700	<20	<20	<50	<50	700	<100	0.7	-	0.6	-	<0.5	<0.5	<0.5	<0.5	<0.5	-	<0.5	-	<0.5	<0.5	-	<0.5	<0.5	<0.5	
RCTP2_2.5	2020_Red_RCTP2	-	25-Mar-20	2.5	-	-	-	-	<100	<20	<20	<50	<50	<100	<100	<0.5	-	0.6	-	<0.5	<0.5	<0.5	<0.5	<0.5	-	<0.5	-	<0.5	<0.5	-	<0.5	<0.5	<0.5	
RCTP9_0.5	2020_Red_RCTP9	-	25-Mar-20	0.5	-	-	-	-	700	<20	<20	<50	<50	700	<100	4.5	-	0.7	-	<0.5	<0.5	<0.5	<0.5	0.7	<0.5	-	<0.5	<0.5	-	<0.5	<0.5	<0.5		
RCTP9_2.1	2020_Red_RCTP9	-	25-Mar-20	2.1	-	-	-	-	<100	<20	<20	<50	<50	<100	<100	<0.5	-	0.6	-	<0.5	<0.5	<0.5	<0.5	<0.5	-	<0.5	-	<0.5	<0.5	-	<0.5	<0.5	<0.5	
RCTP9_3.3	2020_Red_RCTP9	-	25-Mar-20	3.3	-	-	-	-	-	-	-	-	-	-	-	-	-	-	-	-	-	-	-	-	-	-	-	-	-	-	-	-		
RCTP9_4.1	2020_Red_RCTP9	-	25-Mar-20	4.1	-	-	-	-	-	-	-	-	-	-	-	-	-	-	-	-	-	-	-	-	-	-	-	-	-	-	-	-		
RCTP10_0.5	2020_Red_RCTP10	-	25-Mar-20	0.5	-	-	-	-	360	<20	<20	<50	<50	250	110	<1	-	0.6	-	<0.5	<0.5	<0.5	<1	<0.5	-	<0.5	-	<0.5	<0.5	-	<1	<0.5	<0.5	<0.5
RCTP10_1.0	2020_Red_RCTP10	-	25-Mar-20	1	-	-	-	-	1,214	<20	<20	<50	<50	64	64	760	390	<0.5	-	0.6	-	<0.5	<0.5	<0.5	<0.5	-	<0.5	-	<0.5	<0.5	-	<0.5	<0.5	<0.5
RCTP10_1.5	2020_Red_RCTP10	-	25-Mar-20	1.5	-	-	-	-	-	-	-	-	-	-	-	-	-	-	-	-	-	-	-	-	-	-	-	-	-	-	-	-	-	
RCTP10_2.0	2020_Red_RCTP10	-	25-Mar-20	2	-	-	-	-	-	-	-	-	-	-	-	-	-	-	-	-	-	-	-	-	-	-	-	-	-	-	-	-	-	
RCTP12_1.0	2020_Red_RCTP12	-	25-Mar-20	1	-	-	-	-	190	<20	<20	<50	<50	190	<100	1.2	-	0.6	-	<0.5	<0.5	<0.5	<0.5	<0.5	-	<0.5	-	<0.5	<0.5	-	<0.5	<0.5	<0.5	
RCTP12_2.2	2020_Red_RCTP12	-	25-Mar-20	2.2	-	-	-	-	<100	<20	<20	<50	<50	<100	<100	<0.5	-	0.6	-	<0.5	<0.5	<0.5	<0.5	<0.5	-	<0.5	-	<0.5	<0.5	-	<0.5	<0.5	<0.5	
RCTP12_4.0	2020_Red_RCTP12	-	25-Mar-20	4	-	-	-	-	-	-	-	-	-	-	-	-	-	-	-	-	-	-	-	-	-	-	-	-	-	-	-	-	-	
RCTP12_5.5	2020_Red_RCTP12	-	25-Mar-20	5.5	-	-	-	-	-	-	-	-	-	-	-	-	-	-	-	-	-	-	-	-	-	-	-	-	-	-	-	-	-	

\*Generic & site-specific EIL values adopted from Arcadis (2019) RAP Appendix C, Table 2.  
\*\*Chromium III+IV HIL values adopted from Arcadis (2019) RAP Appendix C, Table 6.

Comments

- ND - No asbestos detected at the laboratory limit of reporting (0.1 g/kg)
- #1 Carcinogenic PAHs: HIL based on 8 carc. PAHs & their TEFs (ref to BaP ref Schedule 7) BaP TEQ calc: by multiplying the conc of each carc. PAH in sample by its BaP TEF (ref Table B7)
- #2 Arsenic: HIL assumes 70% oral bioavailability. Site-specific bioavailability maybe important and should be considered where appropriate (refer Schedule B7).
- #3 Lead: HILs A,B,C based on blood lead models (IEUBK & HIL D on adult lead model for where 50% bioavailability considered. Site-specific bioavailability should be considered where appropriate).
- #4 Elemental mercury: HIL does not address elemental mercury, a site specific assessment should be considered if elemental mercury is present, or suspected to be present.
- #5 PCBs: HIL refers to non-dioxin like PCBs only. Where PCB source is known, or suspected at a site, a site-specific assessment of exposure to all PCBs (inc dioxin like PCBs) should be considered.
- #6 Aged values apply to arsenic contamination present in soil > 2 years. Refer Schedule B5c for < 2 years.
- #7 To obtain F1 subtract the sum of BTEX concentrations from the C6 - C10 fraction.
- #8 ERRATA Updated 30 April 2014. Naphthalene should not be subtracted.
- #9 Errata 30 April 2014. Naphthalene should not be subtracted from >C6.
- #10 Moderate reliability. To obtain F1 subtract the sum of BTEX concentrations from the C6 - C10 fraction.
- #11 Separate management limits for BTEX & naphthalene are not available hence should not be subtracted from the relevant fractions to obtain F1 & F2
- #12 To obtain F2 subtract naphthalene from the >C10 - C16 fraction.

NL - Derived soil HSL exceeds soil saturation concentration, non-limiting

Table 2 - Historical Soil Results, Medium-High Density Residential Land Use Sample Locations

	Indefinite 1,2,3,4-dipyrrene
ECL	-
NEPM 2013 Table 1A(1) HILs Residential B Soil	-
NEPM 2013 Table 7 HSLs for Asbestos in Soil - Residential B Soil	-
NEPM 2013 Table 1B(1-4) Generic & Site Specific EIL - Urban Res & Public Open Space*	-
NEPM 2013 Table 1B(6) ESLs for Urban Res, Coarse Soil >=0m, <2m	-
NEPM 2013 Table 1B(6) ESLs for Urban Res, Fine Soil >=0m, <2m	-
NEPM 2013 Table 1B(7) Management Limits in Res / Parkland, Coarse Soil	-
NEPM 2013 Table 1B(7) Management Limits in Res / Parkland, Fine Soil	-
ANZG 2018 DGV Toxicant values for Sediments (Table 1)	-
NEPM 2013 Table 1A(3) Res A/B Soil HSL for Vapour Intrusion, Clay	-
>=0m, <1m	-
>=1m, <2m	-
>=2m, <4m	-
>=4m	-
NEPM 2013 Table 1A(3) Res A/B Soil HSL for Vapour Intrusion, Sand	-
>=0m, <1m	-
>=1m, <2m	-
>=2m, <4m	-
>=4m	-
NEPM 2013 Table 1A(3) Res A/B Soil HSL for Vapour Intrusion, Silt	-
>=0m, <1m	-
>=1m, <2m	-
>=2m, <4m	-
>=4m	-

Field ID	Location Code	Description	Sampled Date	Sample Depth (m)
ADI Limited (1996), Stage 1 Site Investigation Report				
P10	1996_ADI_P10	-	ADI February 1996	0.3
P12	1996_ADI_P12	-	ADI February 1996	0.2
P12	1996_ADI_P12	-	ADI February 1996	0.8
P50	1996_ADI_P50	-	ADI February 1996	0.5
P50	1996_ADI_P50	-	ADI February 1996	2.3
P51	1996_ADI_P51	-	ADI February 1996	2.4
P51	1996_ADI_P51	-	ADI February 1996	3.6
P54	1996_ADI_P54	-	ADI February 1996	0.2
P54	1996_ADI_P54	-	ADI February 1996	0.9
P54	1996_ADI_P54	-	ADI February 1996	1.7
P56	1996_ADI_P56	-	ADI February 1996	0.2
BH5	1996_ADI_BH5	-	ADI February 1996	0.5
BH5	1996_ADI_BH5	-	ADI February 1996	2
BH8	1996_ADI_BH8	-	ADI February 1996	0.5
BH8	1996_ADI_BH8	-	ADI February 1996	1.3
BH8	1996_ADI_BH8	-	ADI February 1996	4
W17	1996_ADI_W17	-	ADI February 1996	1.1
W17	1996_ADI_W17	-	ADI February 1996	1.45
W17	1996_ADI_W17	-	ADI February 1996	2.1
W25	1996_ADI_W25	-	ADI February 1996	1.3
S11	1996_ADI_S11	-	ADI February 1996	0.2
S11	1996_ADI_S11	-	ADI February 1996	1.5
S36	1996_ADI_S36	-	ADI February 1996	0.6
S36	1996_ADI_S36	-	ADI February 1996	1.7
B18	1996_ADI_B18	-	ADI February 1996	1.5

Table 2 - Historical Soil Results, Medium-High Density Residential Land Use Sample Locations

	Indefinite 1,2,3,4-dipylene
ECL	-
NEPM 2013 Table 1A(1) HILs Residential B Soil	-
NEPM 2013 Table 7 HSLs for Asbestos in Soil - Residential B Soil	-
NEPM 2013 Table 1B(1-4) Generic & Site Specific EIL - Urban Res & Public Open Space*	-
NEPM 2013 Table 1B(6) ESLs for Urban Res, Coarse Soil >=0m, <2m	-
NEPM 2013 Table 1B(6) ESLs for Urban Res, Fine Soil >=0m, <2m	-
NEPM 2013 Table 1B(7) Management Limits in Res / Parkland, Coarse Soil	-
NEPM 2013 Table 1B(7) Management Limits in Res / Parkland, Fine Soil	-
ANZG 2018 DGV Toxicant values for Sediments (Table 1)	-
NEPM 2013 Table 1A(3) Res A/B Soil HSL for Vapour Intrusion, Clay	-
>=0m, <1m	-
>=1m, <2m	-
>=2m, <4m	-
>=4m	-
NEPM 2013 Table 1A(3) Res A/B Soil HSL for Vapour Intrusion, Sand	-
>=0m, <1m	-
>=1m, <2m	-
>=2m, <4m	-
>=4m	-
NEPM 2013 Table 1A(3) Res A/B Soil HSL for Vapour Intrusion, Silt	-
>=0m, <1m	-
>=1m, <2m	-
>=2m, <4m	-
>=4m	-

Field ID	Location Code	Description	Sampled Date	Sample Depth (m)	
<b>EnviroRisk (2006), Phase 2 Environmental (Site Contamination) Assessment</b>					
BH8	2006_ENVR_BH8	Grid Pattern Samples	EnviroRisk Dec 2005	0.1	<0.5
BH8	2006_ENVR_BH8	Grid Pattern Samples	EnviroRisk Dec 2005	0.5	0.5
BH8	2006_ENVR_BH8	Grid Pattern Samples	EnviroRisk Dec 2005	1	-
BH13	2006_ENVR_BH13	Grid Pattern Samples	EnviroRisk Dec 2005	1	<0.5
BH13	2006_ENVR_BH13	Grid Pattern Samples	EnviroRisk Dec 2005	1.5	<0.5
BH13	2006_ENVR_BH13	Grid Pattern Samples	EnviroRisk Dec 2005	2	-
BH14	2006_ENVR_BH14	Grid Pattern Samples	EnviroRisk Dec 2005	1	<0.5
BH14	2006_ENVR_BH14	Grid Pattern Samples	EnviroRisk Dec 2005	1.5	<0.5
BH14	2006_ENVR_BH14	Grid Pattern Samples	EnviroRisk Dec 2005	2.4	-
BH15	2006_ENVR_BH15	Grid Pattern Samples	EnviroRisk Dec 2005	0.1	<0.5
BH15	2006_ENVR_BH15	Grid Pattern Samples	EnviroRisk Dec 2005	1	<0.5
BH16	2006_ENVR_BH16	Grid Pattern Samples	EnviroRisk Dec 2005	4	<0.5
BH18	2006_ENVR_BH18	Judgemental Samples	EnviroRisk Dec 2005	1	<0.5
BH18	2006_ENVR_BH18	Judgemental Samples	EnviroRisk Dec 2005	2	<0.5
BH18	2006_ENVR_BH18	Judgemental Samples	EnviroRisk Dec 2005	3	<0.5
BH21	2006_ENVR_BH21	Judgemental Samples	EnviroRisk Dec 2005	0.5	<0.5
BH21	2006_ENVR_BH21	Judgemental Samples	EnviroRisk Dec 2005	1	<0.5
TP18A	2006_ENVR_TP18A	Delineation Sampling	EnviroRisk Dec 2005	1	-
TP18A	2006_ENVR_TP18A	Delineation Sampling	EnviroRisk Dec 2005	2	-
TP18A	2006_ENVR_TP18A	Delineation Sampling	EnviroRisk Dec 2005	2.5	-
TP18B	2006_ENVR_TP18B	Delineation Sampling	EnviroRisk Dec 2005	1	-
TP18B	2006_ENVR_TP18B	Delineation Sampling	EnviroRisk Dec 2005	2	-
TP18B	2006_ENVR_TP18B	Delineation Sampling	EnviroRisk Dec 2005	2.5	-
TP18C	2006_ENVR_TP18C	Delineation Sampling	EnviroRisk Dec 2005	1	-
TP18C	2006_ENVR_TP18C	Delineation Sampling	EnviroRisk Dec 2005	2	-
TP18C	2006_ENVR_TP18C	Delineation Sampling	EnviroRisk Dec 2005	2.5	-
TP18D	2006_ENVR_TP18D	Delineation Sampling	EnviroRisk Dec 2005	1	-
TP18D	2006_ENVR_TP18D	Delineation Sampling	EnviroRisk Dec 2005	2	-
TP18D	2006_ENVR_TP18D	Delineation Sampling	EnviroRisk Dec 2005	2.7	-
TP18E	2006_ENVR_TP18E	Delineation Sampling	EnviroRisk Dec 2005	1	-
TP18E	2006_ENVR_TP18E	Delineation Sampling	EnviroRisk Dec 2005	2	-
TP18E	2006_ENVR_TP18E	Delineation Sampling	EnviroRisk Dec 2005	2.5	-
TP18F	2006_ENVR_TP18F	Delineation Sampling	EnviroRisk Dec 2005	1	-
TP18F	2006_ENVR_TP18F	Delineation Sampling	EnviroRisk Dec 2005	2	-
TP18F	2006_ENVR_TP18F	Delineation Sampling	EnviroRisk Dec 2005	2.5	-

Table 2 - Historical Soil Results, Medium-High Density Residential Land Use Sample Locations

	Indefinite 1,2,3,4-dipylene
	mg/kg
ECL	
NEPM 2013 Table 1A(1) HILs Residential B Soil	
NEPM 2013 Table 7 HSLs for Asbestos in Soil - Residential B Soil	
NEPM 2013 Table 1B(1-4) Generic & Site Specific EIL - Urban Res & Public Open Space*	
NEPM 2013 Table 1B(6) ESLs for Urban Res, Coarse Soil >=0m, <2m	
NEPM 2013 Table 1B(6) ESLs for Urban Res, Fine Soil >=0m, <2m	
NEPM 2013 Table 1B(7) Management Limits in Res / Parkland, Coarse Soil	
NEPM 2013 Table 1B(7) Management Limits in Res / Parkland, Fine Soil	
ANZG 2018 DGV Toxicant values for Sediments (Table 1)	
NEPM 2013 Table 1A(3) Res A/B Soil HSL for Vapour Intrusion, Clay	
>=0m, <1m	
>=1m, <2m	
>=2m, <4m	
>=4m	
NEPM 2013 Table 1A(3) Res A/B Soil HSL for Vapour Intrusion, Sand	
>=0m, <1m	
>=1m, <2m	
>=2m, <4m	
>=4m	
NEPM 2013 Table 1A(3) Res A/B Soil HSL for Vapour Intrusion, Silt	
>=0m, <1m	
>=1m, <2m	
>=2m, <4m	
>=4m	

Field ID	Location Code	Description	Sampled Date	Sample Depth (m)	
<b>Environmental Strategies (2014), Phase 2 Detailed Site Investigation</b>					
BH43	2014_ES_BH43	Area A	2014	0.2	<0.1
BH43	2014_ES_BH43	Area A	2014	1	<0.1
ES1	2014_ES_ES1	Area A	2014	0.5	<0.1
ES2	2014_ES_ES2	Area A	2014	1.5	<0.1
MW4	2014_ES_MW4	Area A	2014	0.5	<0.1
MW4	2014_ES_MW4	Area A	2014	1	<0.1
MW5	2014_ES_MW5	Area A	2014	0.2	0.4
TP07	2014_ES_TP07	Area B	2014	0.2	<0.1
TP07	2014_ES_TP07	Area B	2014	1.75	<0.1
TP08	2014_ES_TP08	Area B	2014	0.2	<0.1
TP08	2014_ES_TP08	Area B	2014	2.35	<0.1
TP33	2014_ES_TP33	Area B	2014	0.2	<0.1
TP33	2014_ES_TP33	Area B	2014	2.3	<0.1
TP34	2014_ES_TP34	Area B	2014	0.2	0.3
TP34	2014_ES_TP34	Area B	2014	1.4	<0.1
TP12	2014_ES_TP12	Area C	2014	0.2	<0.1
TP12	2014_ES_TP12	Area C	2014	0.55	<0.1
TP14	2014_ES_TP14	Area C	2014	0.2	<0.1
TP14	2014_ES_TP14	Area C	2014	0.65	<0.1
TP21	2014_ES_TP21	Area C	2014	0.2	<0.1
TP21	2014_ES_TP21	Area C	2014	1	<0.1
TP22	2014_ES_TP22	Area C	2014	0.2	<0.5
TP22	2014_ES_TP22	Area C	2014	0.9	<0.1
TP23	2014_ES_TP23	Area C	2014	0.2	<0.1
TP23	2014_ES_TP23	Area C	2014	0.7	<0.1
TP31	2014_ES_TP31	Area C	2014	1.1	<0.1
TP31	2014_ES_TP31	Area C	2014	1.9	<0.1
TP32	2014_ES_TP32	Area C	2014	1.2	0.4
TP32	2014_ES_TP32	Area C	2014	1.8	<0.1
TP38	2014_ES_TP38	Area C	2014	1	<0.1
TP38	2014_ES_TP38	Area C	2014	3.1	<0.1
SEDSR	2014_ES_SEDSR	Area E - Sediment Samples	02-Apr-14	0.2-0.4	<0.1
<b>Acadis (2017a), Additional Environmental Assessment</b>					
TP1	2017_ARC_TP1	-	10-Jan-17	0.5	<0.1
TP34	2017_ARC_TP34	-	12-Jan-17	1	<0.1
TP9	2017_ARC_TP9	-	10-Jan-17	1	<0.1
TP10	2017_ARC_TP10	-	10-Jan-17	0.5	<0.1
TP10	2017_ARC_TP10	-	10-Jan-17	1	<0.1
TP11	2017_ARC_TP11	-	10-Jan-17	0.5	<0.1
TP2	2017_ARC_TP2	-	10-Jan-17	1	<0.1
TP17	2017_ARC_TP17	-	11-Jan-17	0.5	<0.1
TP21	2017_ARC_TP21	-	11-Jan-17	1	<0.1
TP3	2017_ARC_TP3	-	10-Jan-17	0.5	<0.1

Table 2 - Historical Soil Results, Medium-High Density Residential Land Use Sample Locations

	Indefinite 1,2,3,4-dibenzopyrene
ECL	-
NEPM 2013 Table 1A(1) HILs Residential B Soil	-
NEPM 2013 Table 7 HSLs for Asbestos in Soil - Residential B Soil	-
NEPM 2013 Table 1B(1-4) Generic & Site Specific EIL - Urban Res & Public Open Space*	-
NEPM 2013 Table 1B(6) ESLs for Urban Res, Coarse Soil >=0m, <2m	-
NEPM 2013 Table 1B(6) ESLs for Urban Res, Fine Soil >=0m, <2m	-
NEPM 2013 Table 1B(7) Management Limits in Res / Parkland, Coarse Soil	-
NEPM 2013 Table 1B(7) Management Limits in Res / Parkland, Fine Soil	-
ANZG 2018 DGV Toxicant values for Sediments (Table 1)	-
NEPM 2013 Table 1A(3) Res A/B Soil HSL for Vapour Intrusion, Clay	-
>=0m, <1m	-
>=1m, <2m	-
>=2m, <4m	-
>=4m	-
NEPM 2013 Table 1A(3) Res A/B Soil HSL for Vapour Intrusion, Sand	-
>=0m, <1m	-
>=1m, <2m	-
>=2m, <4m	-
>=4m	-
NEPM 2013 Table 1A(3) Res A/B Soil HSL for Vapour Intrusion, Silt	-
>=0m, <1m	-
>=1m, <2m	-
>=2m, <4m	-
>=4m	-

Field ID	Location Code	Description	Sampled Date	Sample Depth (m)	
<b>Arcadis (2018), Additional Environmental Assessment - Production Area</b>					
ABH4	2018_ARC_ABH4	-	28-Nov-17	0.5	<0.1
ABH4	2018_ARC_ABH4	-	28-Nov-17	1.5	<0.1
ABH4	2018_ARC_ABH4	-	28-Nov-17	3	<0.1
<b>Arcadis (2018), Flue, Stack and Powerhouse Assessment</b>					
SS3	2018_ARC_SS3	SS3	19-Feb-18	-	-
SS2	2018_ARC_SS2	SS2	19-Feb-18	-	-
SS3	2018_ARC_SS3	SS3	19-Feb-18	-	-
SS4	2018_ARC_SS4	SS4	19-Feb-18	-	-
<b>Reditus 2020 Data Gap Investigation</b>					
RCTP2_1.0	2020_Red_RCTP2	-	25-Mar-20	1	<0.5
RCTP2_2.5	2020_Red_RCTP2	-	25-Mar-20	2.5	<0.5
RCTP9_0.5	2020_Red_RCTP9	-	25-Mar-20	0.5	<0.5
RCTP9_2.1	2020_Red_RCTP9	-	25-Mar-20	2.1	<0.5
RCTP9_3.3	2020_Red_RCTP9	-	25-Mar-20	3.3	-
RCTP9_4.1	2020_Red_RCTP9	-	25-Mar-20	4.1	-
RCTP10_0.5	2020_Red_RCTP10	-	25-Mar-20	0.5	<0.5
RCTP10_1.0	2020_Red_RCTP10	-	25-Mar-20	1	<0.5
RCTP10_1.5	2020_Red_RCTP10	-	25-Mar-20	1.5	-
RCTP10_2.0	2020_Red_RCTP10	-	25-Mar-20	2	-
RCTP12_1.0	2020_Red_RCTP12	-	25-Mar-20	1	<0.5
RCTP12_2.2	2020_Red_RCTP12	-	25-Mar-20	2.2	<0.5
RCTP12_4.0	2020_Red_RCTP12	-	25-Mar-20	4	-
RCTP12_5.5	2020_Red_RCTP12	-	25-Mar-20	5.5	-

\*Generic & site-specific EIL values adopted from Arcadis (2019) RAP Appendix C, Table 2.  
\*\*Chromium III+IV HIL values adopted from Arcadis (2019) RAP Appendix C, Table 6.

**Comments**

- ND - No asbestos detected at the laboratory limit of reporting (0.1 g/kg)
- #1 Carcinogenic PAHs: HIL based on 8 carc. PAHs & their TEFs (rel to BaP ref Schedule 7) BaP TEQ calc: by multiplying the conc of each carc. PAH in sample by its BaP TEF (ref Table B7)
- #2 Arsenic: HIL assumes 70% oral bioavailability. Site-specific bioavailability maybe important and should be considered where appropriate (refer Schedule B7).
- #3 Lead: HILs A,B,C based on blood lead models (IEUBK & HIL D on adult lead model for where 50% bioavailability considered. Site-specific bioavailability should be considered where appropriate).
- #4 Elemental mercury: HIL does not address elemental mercury, a site specific assessment should be considered if elemental mercury is present, or suspected to be present.
- #5 PCBs: HIL refers to non-dioxin like PCBs only. Where PCB source is known, or suspected at a site, a site-specific assessment of exposure to all PCBs (inc dioxin like PCBs) should be considered.
- #6 Aged values apply to arsenic contamination present in soil > 2 years. Refer Schedule B5c for < 2 years.
- #7 To obtain F1 subtract the sum of BTEX concentrations from the C6 - C10 fraction.
- #8 ERRATA Updated 30 April 2014. Naphthalene should not be subtracted.
- #9 Errata 30 April 2014. Naphthalene should not be subtracted from >C
- #10 Moderate reliability. To obtain F1 subtract the sum of BTEX concentrations from the C6 - C10 fraction.
- #11 Separate management limits for BTEX & naphthalene are not available hence should not be subtracted from the relevant fractions to obtain F1 & F2
- #12 To obtain F2 subtract naphthalene from the >C10 - C16 fraction.
- NL - Derived soil HSL exceeds soil saturation concentration, non-limiting

















Table 2 - Historical Soil Results, Medium-High Density Residential Land Use Sample Locations



Field ID	Location Code	Description	Sampled Date	Sample Depth (m)	Organophosphorus Pesticides																																															
					Endosulfan II mg/kg	Endosulfan sulphate mg/kg	Endrin mg/kg	Endrin aldehyde mg/kg	Endrin ketone mg/kg	γ-BHC (Lindane) mg/kg	Heptachlor mg/kg	Heptachlor epoxide mg/kg	Methoxychlor mg/kg	Toxaphene mg/kg	Toluthion mg/kg	Azinophos methyl mg/kg	Bestar (Sulprofos) mg/kg	Chlorfenvinphos mg/kg	Chlorpyrifos mg/kg	Chlorpyrifos-methyl mg/kg	Coumaphos mg/kg	Demeton-O mg/kg	Demeton-S mg/kg	Diazinon mg/kg	Dichlorvos mg/kg	Dimethoate mg/kg	Disulfoton mg/kg	Ethion mg/kg	Ethoprop mg/kg	Fenitrothion mg/kg	Fensulfoturon mg/kg	Fenitrothion mg/kg	EPN mg/kg	Malathion mg/kg	Mephoros mg/kg	Methyl parathion mg/kg	Mevinphos (Phosdrin) mg/kg	Monocrotophos mg/kg	Naled (Dibrom) mg/kg	Omethoate mg/kg	Parathion mg/kg	Phorate mg/kg	Pyrimphos-methyl mg/kg	Pyrazophos mg/kg								
EQL					0.1	0.1	0.1	0.1	0.05	0.1	0.1	0.1	1	0.2	0.1	0.2	0.2	0.1	2	0.2	0.2	0.1	0.1	0.1	0.2	0.1	0.2	0.1	0.2	0.2	0.2	0.2	0.1	0.2	0.2	0.2	2	2	0.1	0.2	0.2	0.2										
NEPM 2013 Table 1A(1) HILs Residential B Soil					20						10		500					340																																		
NEPM 2013 Table 7 HSLs for Asbestos in Soil - Residential B Soil																																																				
NEPM 2013 Table 1B(1-4) Generic & Site Specific EIL - Urban Res & Public Open Space*																																																				
NEPM 2013 Table 1B(6) ESLs for Urban Res, Coarse Soil >=0m, <2m																																																				
NEPM 2013 Table 1B(6) ESLs for Urban Res, Fine Soil >=0m, <2m																																																				
NEPM 2013 Table 1B(7) Management Limits in Res / Parkland, Coarse Soil																																																				
NEPM 2013 Table 1B(7) Management Limits in Res / Parkland, Fine Soil																																																				
ANZG 2018 DGV Toxicant values for Sediments (Table 1)									0.0009																																											
NEPM 2013 Table 1A(3) Res A/B Soil HSL for Vapour Intrusion, Clay																																																				
>=0m, <1m																																																				
>=1m, <2m																																																				
>=2m, <4m																																																				
>=4m																																																				
NEPM 2013 Table 1A(3) Res A/B Soil HSL for Vapour Intrusion, Sand																																																				
>=0m, <1m																																																				
>=1m, <2m																																																				
>=2m, <4m																																																				
>=4m																																																				
NEPM 2013 Table 1A(3) Res A/B Soil HSL for Vapour Intrusion, Silt																																																				
>=0m, <1m																																																				
>=1m, <2m																																																				
>=2m, <4m																																																				
>=4m																																																				
P10	1996_ADI_P10	-	ADI February 1996	0.3	-	-	-	-	-	-	-	-	-	-	-	-	-	-	-	-	-	-	-	-	-	-	-	-	-	-	-	-	-	-	-	-	-	-	-	-	-	-	-	-	-	-	-	-	-	-		
P12	1996_ADI_P12	-	ADI February 1996	0.2	-	-	-	-	-	-	-	-	-	-	-	-	-	-	-	-	-	-	-	-	-	-	-	-	-	-	-	-	-	-	-	-	-	-	-	-	-	-	-	-	-	-	-	-	-	-	-	
P50	1996_ADI_P50	-	ADI February 1996	0.5	-	-	-	-	-	-	-	-	-	-	-	-	-	-	-	-	-	-	-	-	-	-	-	-	-	-	-	-	-	-	-	-	-	-	-	-	-	-	-	-	-	-	-	-	-	-	-	
P51	1996_ADI_P51	-	ADI February 1996	2.4	-	-	-	-	-	-	-	-	-	-	-	-	-	-	-	-	-	-	-	-	-	-	-	-	-	-	-	-	-	-	-	-	-	-	-	-	-	-	-	-	-	-	-	-	-	-		
P54	1996_ADI_P54	-	ADI February 1996	0.2	-	-	-	-	-	-	-	-	-	-	-	-	-	-	-	-	-	-	-	-	-	-	-	-	-	-	-	-	-	-	-	-	-	-	-	-	-	-	-	-	-	-	-	-	-	-		
B18	1996_ADI_B18	-	ADI February 1996	1.5	-	-	-	-	-	-	-	-	-	-	-	-	-	-	-	-	-	-	-	-	-	-	-	-	-	-	-	-	-	-	-	-	-	-	-	-	-	-	-	-	-	-	-	-	-			





Table 2 - Historical Soil Results, Medium-High Density Residential Land Use Sample Locations



Field ID	Location Code	Description	Sampled Date	Sample Depth (m)	Organophosphorus Pesticides																																										
					Endosulfan II	Endosulfan sulphate	Endrin	Endrin aldehyde	Endrin ketone	γ-BHC (Lindane)	Heptachlor	Heptachlor epoxide	Methoxychlor	Toxaphene	Toxibion	Azinophos methyl	Baklar (Sulprofos)	Chlorfenvinphos	Chlorpyrifos	Chlorpyrifos-methyl	Coumaphos	Demeton-O	Demeton-S	Diazinon	Dichlorvos	Dimethoate	Disulfoton	Ethion	Ethoprop	Fenitrothion	Fenitrothion	Fenitrothion	EPN	Malathion	Merphos	Methyl parathion	Mevinphos (Phosdrin)	Monocrotophos	Naled (Dibrom)	Omethoate	Parathion	Phorate	Pirimiphos-methyl	Pyrazophos			
EOL					0.1	0.1	0.1	0.1	0.05	0.1	0.1	0.1	1	0.2	0.1	0.2	0.2	0.1	2	0.2	0.2	0.1	0.1	0.1	0.2	0.1	0.2	0.1	0.2	0.2	0.2	0.2	0.1	0.2	0.2	0.2	0.2	0.2	0.1	0.2	0.2	0.2	0.2				
NEPM 2013 Table 1A(1) HILs Residential B Soil					10	20						10	500			340																															
NEPM 2013 Table 7 HILs for Asbestos in Soil - Residential B Soil																																															
NEPM 2013 Table 1B(1-4) Generic & Site Specific EIL - Urban Res & Public Open Space*																																															
NEPM 2013 Table 1B(6) ESLs for Urban Res. Coarse Soil >=0m, <2m																																															
NEPM 2013 Table 1B(6) ESLs for Urban Res. Fine Soil >=0m, <2m																																															
NEPM 2013 Table 1B(7) Management Limits in Res / Parkland, Coarse Soil																																															
NEPM 2013 Table 1B(7) Management Limits in Res / Parkland, Fine Soil																																															
ANZG 2018 DGV Toxicant values for Sediments (Table 1)									0.0009																																						
NEPM 2013 Table 1A(3) Res A/B Soil HSL for Vapour Intrusion, Clay																																															
>=0m, <1m																																															
>=1m, <2m																																															
>=2m, <4m																																															
>=4m																																															
NEPM 2013 Table 1A(3) Res A/B Soil HSL for Vapour Intrusion, Sand																																															
>=0m, <1m																																															
>=1m, <2m																																															
>=2m, <4m																																															
>=4m																																															
NEPM 2013 Table 1A(3) Res A/B Soil HSL for Vapour Intrusion, Silt																																															
>=0m, <1m																																															
>=1m, <2m																																															
>=2m, <4m																																															
>=4m																																															

\*Generic & site-specific EIL values adopted from Arcadis (2019) RAP Appendix C, Table 2.  
\*\*Chromium III+IV HIL values adopted from Arcadis (2019) RAP Appendix C, Table 6.

Comments  
 ND - No asbestos detected at the laboratory limit of reporting (0.1 g/kg)  
 #1 Carcinogenic PAHs: HIL based on 8 carc. PAHs & their TEFs (ref to BaP ref Schedule 7) BaP TEQ calc: by multiplying the conc of each carc. PAH in sample by its BaP TEF (ref Table B7)  
 #2 Arsenic: HIL assumes 70% oral bioavailability. Site-specific bioavailability maybe important and should be considered where appropriate (refer Schedule B7)  
 #3 Lead: HILs A,B,C based on blood lead models (IEUBK & HIL D on adult lead model for where 50% bioavailability considered. Site-specific bioavailability should be considered where appropriate)  
 #4 Elemental mercury: HIL does not address elemental mercury, a site specific assessment should be considered if elemental mercury is present, or suspected to be present.  
 #5 PCBs: HIL refers to non-dioxin like PCBs only. Where PCB source is known, or suspected at a site, a site-specific assessment of exposure to all PCBs (inc dioxin like PCBs) should be considered.  
 #6 Aged values apply to arsenic contamination present in soil > 2 years. Refer Schedule B5c for < 2 years.  
 #7 To obtain F1 subtract the sum of BTEX concentrations from the C6 - C10 fraction.  
 #8 ERRATA Updated 30 April 2014. Naphthalene should not be subtracted.  
 #9 Errata 30 April 2014. Naphthalene should not be subtracted from >C  
 #10 Moderate reliability. To obtain F1 subtract the sum of BTEX concentrations from the C6 - C10 fraction.  
 #11 Separate management limits for BTEX & naphthalene are not available hence should not be subtracted from the relevant fractions to obtain F1 & F2  
 #12 To obtain F2 subtract naphthalene from the >C10 - C16 fraction.  
 NL - Derived soil HSL exceeds soil saturation concentration, non-limiting

Table 2 - Historical Soil Results, Medium-High Density Residential Land Use Sample Locations

						Lead	Cadmium	Copper	Chromium	Vanadium	Barium	Strontium	Aluminium	Zinc	Manganese	Iron	Mercury	Asbestos	Polychlorinated Biphenyls	Polycyclic Aromatic Hydrocarbons	Organochlorine Pesticides	Organophosphorus Pesticides	Organotin	Organophosphorus		
						mg/kg	mg/kg	mg/kg	mg/kg	mg/kg	mg/kg	mg/kg	mg/kg	mg/kg	mg/kg	mg/kg	mg/kg	mg/kg	mg/kg	mg/kg	mg/kg	mg/kg	mg/kg	mg/kg	mg/kg	
EQI																										
NEPM 2013 Table 1A(1) HILs Residential B Soil						0.1	0.2	0.2	0.2	0.2	0.1															
NEPM 2013 Table 7 HSLs for Asbestos in Soil - Residential B Soil																										
NEPM 2013 Table 1B(1-4) Generic & Site Specific EIL - Urban Res & Public Open Space*																										
NEPM 2013 Table 1B(6) ESLs for Urban Res, Coarse Soil >=0m, <2m																										
NEPM 2013 Table 1B(6) ESLs for Urban Res, Fine Soil >=0m, <2m																										
NEPM 2013 Table 1B(7) Management Limits in Res / Parkland, Coarse Soil																										
NEPM 2013 Table 1B(7) Management Limits in Res / Parkland, Fine Soil																										
ANZG 2018 DGV Toxicant values for Sediments (Table 1)																										
NEPM 2013 Table 1A(3) Res A/B Soil HSL for Vapour Intrusion, Clay																										
>=0m, <1m																										
>=1m, <2m																										
>=2m, <4m																										
>=4m																										
NEPM 2013 Table 1A(3) Res A/B Soil HSL for Vapour Intrusion, Sand																										
>=0m, <1m																										
>=1m, <2m																										
>=2m, <4m																										
>=4m																										
NEPM 2013 Table 1A(3) Res A/B Soil HSL for Vapour Intrusion, Silt																										
>=0m, <1m																										
>=1m, <2m																										
>=2m, <4m																										
>=4m																										
Field ID	Location Code	Description	Sampled Date	Sample Depth (m)	Lead	Cadmium	Copper	Chromium	Vanadium	Barium	Strontium	Aluminium	Zinc	Manganese	Iron	Mercury	Asbestos	Polychlorinated Biphenyls	Polycyclic Aromatic Hydrocarbons	Organochlorine Pesticides	Organophosphorus Pesticides	Organotin	Organophosphorus			
ADI Limited (1996), Stage 1 Site Investigation Report																										
P10	1996_ADI_P10	-	ADI February 1996	0.3	-	-	-	-	-	-	-	-	-	-	-	-	-	-	-	-	-	-	-	-		
P12	1996_ADI_P12	-	ADI February 1996	0.2	-	-	-	-	-	-	-	-	-	-	-	-	-	-	-	-	-	-	-	-		
P12	1996_ADI_P12	-	ADI February 1996	0.8	-	-	-	-	-	-	-	-	-	-	-	-	-	-	-	-	-	-	-	-		
P50	1996_ADI_P50	-	ADI February 1996	0.5	-	-	-	-	-	-	-	-	-	-	-	-	-	-	-	-	-	-	-	-		
P50	1996_ADI_P50	-	ADI February 1996	2.3	-	-	-	-	-	-	-	-	-	-	-	-	-	-	-	-	-	-	-	-		
P51	1996_ADI_P51	-	ADI February 1996	2.4	-	-	-	-	-	-	-	-	-	-	-	-	-	-	-	-	-	-	-	-		
P51	1996_ADI_P51	-	ADI February 1996	3.6	-	-	-	-	-	-	-	-	-	-	-	-	-	-	-	-	-	-	-	-		
P54	1996_ADI_P54	-	ADI February 1996	0.2	-	-	-	-	-	-	-	-	-	-	-	-	-	-	-	-	-	-	-	-		
P54	1996_ADI_P54	-	ADI February 1996	0.9	-	-	-	-	-	-	-	-	-	-	-	-	-	-	-	-	-	-	-	-		
P54	1996_ADI_P54	-	ADI February 1996	1.7	-	-	-	-	-	-	-	-	-	-	-	-	-	-	-	-	-	-	-	-		
P56	1996_ADI_P56	-	ADI February 1996	0.2	-	-	-	-	-	-	-	-	-	-	-	-	-	-	-	-	-	-	-	-		
BH5	1996_ADI_BH5	-	ADI February 1996	0.5	-	-	-	-	-	-	-	-	-	-	-	-	-	-	-	-	-	-	-	-		
BH5	1996_ADI_BH5	-	ADI February 1996	2	-	-	-	-	-	-	-	-	-	-	-	-	-	-	-	-	-	-	-	-		
BH8	1996_ADI_BH8	-	ADI February 1996	0.5	-	-	-	-	-	-	-	-	-	-	-	-	-	-	-	-	-	-	-	-		
BH8	1996_ADI_BH8	-	ADI February 1996	1.3	-	-	-	-	-	-	-	-	-	-	-	-	-	-	-	-	-	-	-	-		
BH8	1996_ADI_BH8	-	ADI February 1996	4	-	-	-	-	-	-	-	-	-	-	-	-	-	-	-	-	-	-	-	-		
W17	1996_ADI_W17	-	ADI February 1996	1.1	-	-	-	-	-	-	-	-	-	-	-	-	-	-	-	-	-	-	-	-		
W17	1996_ADI_W17	-	ADI February 1996	1.45	-	-	-	-	-	-	-	-	-	-	-	-	-	-	-	-	-	-	-	-		
W17	1996_ADI_W17	-	ADI February 1996	2.1	-	-	-	-	-	-	-	-	-	-	-	-	-	-	-	-	-	-	-	-		
W25	1996_ADI_W25	-	ADI February 1996	1.3	-	-	-	-	-	-	-	-	-	-	-	-	-	-	-	-	-	-	-	-		
S11	1996_ADI_S11	-	ADI February 1996	0.2	-	-	-	-	-	-	-	-	-	-	-	-	-	-	-	-	-	-	-	-		
S11	1996_ADI_S11	-	ADI February 1996	1.5	-	-	-	-	-	-	-	-	-	-	-	-	-	-	-	-	-	-	-	-		
S36	1996_ADI_S36	-	ADI February 1996	0.6	-	-	-	-	-	-	-	-	-	-	-	-	-	-	-	-	-	-	-	-		
S36	1996_ADI_S36	-	ADI February 1996	1.7	-	-	-	-	-	-	-	-	-	-	-	-	-	-	-	-	-	-	-	-		
B18	1996_ADI_B18	-	ADI February 1996	1.5	-	-	-	-	-	-	-	-	-	-	-	-	-	-	-	-	-	-	-	-		

Table 2 - Historical Soil Results, Medium-High Density Residential Land Use Sample Locations

	0.1	0.2	0.2	0.2	0.1
	mg/kg	mg/kg	mg/kg	mg/kg	mg/kg
	0.1	0.2	0.2	0.2	0.1
ECL					
NEPM 2013 Table 1A(1) HUs Residential B Soil					
NEPM 2013 Table 7 HUs for Asbestos in Soil - Residential B Soil					
NEPM 2013 Table 1B(1-4) Generic & Site Specific EIL - Urban Res & Public Open Space*					
NEPM 2013 Table 1B(6) ESLs for Urban Res, Coarse Soil >=0m, <2m					
NEPM 2013 Table 1B(6) ESLs for Urban Res, Fine Soil >=0m, <2m					
NEPM 2013 Table 1B(7) Management Limits in Res / Parkland, Coarse Soil					
NEPM 2013 Table 1B(7) Management Limits in Res / Parkland, Fine Soil					
ANZG 2018 DGV Toxicant values for Sediments (Table 1)					
NEPM 2013 Table 1A(3) Res A/B Soil HSL for Vapour Intrusion, Clay					
>=0m, <1m					
>=1m, <2m					
>=2m, <4m					
>=4m					
NEPM 2013 Table 1A(3) Res A/B Soil HSL for Vapour Intrusion, Sand					
>=0m, <1m					
>=1m, <2m					
>=2m, <4m					
>=4m					
NEPM 2013 Table 1A(3) Res A/B Soil HSL for Vapour Intrusion, Silt					
>=0m, <1m					
>=1m, <2m					
>=2m, <4m					
>=4m					

Field ID	Location Code	Description	Sampled Date	Sample Depth (m)					
<b>EnviroRisk (2006), Phase 2 Environmental (Site Contamination) Assessment</b>									
BH8	2006_ENVR_BH8	Grid Pattern Samples	EnviroRisk Dec 2005	0.1	-	-	-	-	-
BH8	2006_ENVR_BH8	Grid Pattern Samples	EnviroRisk Dec 2005	0.5	-	-	-	-	-
BH8	2006_ENVR_BH8	Grid Pattern Samples	EnviroRisk Dec 2005	1	-	-	-	-	-
BH13	2006_ENVR_BH13	Grid Pattern Samples	EnviroRisk Dec 2005	1	-	-	-	-	-
BH13	2006_ENVR_BH13	Grid Pattern Samples	EnviroRisk Dec 2005	1.5	-	-	-	-	-
BH13	2006_ENVR_BH13	Grid Pattern Samples	EnviroRisk Dec 2005	2	-	-	-	-	-
BH14	2006_ENVR_BH14	Grid Pattern Samples	EnviroRisk Dec 2005	1	-	-	-	-	-
BH14	2006_ENVR_BH14	Grid Pattern Samples	EnviroRisk Dec 2005	1.5	-	-	-	-	-
BH14	2006_ENVR_BH14	Grid Pattern Samples	EnviroRisk Dec 2005	2.4	-	-	-	-	-
BH15	2006_ENVR_BH15	Grid Pattern Samples	EnviroRisk Dec 2005	0.1	-	-	-	-	-
BH15	2006_ENVR_BH15	Grid Pattern Samples	EnviroRisk Dec 2005	1	-	-	-	-	-
BH16	2006_ENVR_BH16	Grid Pattern Samples	EnviroRisk Dec 2005	4	-	-	-	-	-
BH18	2006_ENVR_BH18	Judgemental Samples	EnviroRisk Dec 2005	1	-	-	-	-	-
BH18	2006_ENVR_BH18	Judgemental Samples	EnviroRisk Dec 2005	2	-	-	-	-	-
BH18	2006_ENVR_BH18	Judgemental Samples	EnviroRisk Dec 2005	3	-	-	-	-	-
BH21	2006_ENVR_BH21	Judgemental Samples	EnviroRisk Dec 2005	0.5	-	-	-	-	-
BH21	2006_ENVR_BH21	Judgemental Samples	EnviroRisk Dec 2005	1	-	-	-	-	-
TP18A	2006_ENVR_TP18A	Delineation Sampling	EnviroRisk Dec 2005	1	-	-	-	-	-
TP18A	2006_ENVR_TP18A	Delineation Sampling	EnviroRisk Dec 2005	2	-	-	-	-	-
TP18A	2006_ENVR_TP18A	Delineation Sampling	EnviroRisk Dec 2005	2.5	-	-	-	-	-
TP18B	2006_ENVR_TP18B	Delineation Sampling	EnviroRisk Dec 2005	1	-	-	-	-	-
TP18B	2006_ENVR_TP18B	Delineation Sampling	EnviroRisk Dec 2005	2	-	-	-	-	-
TP18B	2006_ENVR_TP18B	Delineation Sampling	EnviroRisk Dec 2005	2.5	-	-	-	-	-
TP18C	2006_ENVR_TP18C	Delineation Sampling	EnviroRisk Dec 2005	1	-	-	-	-	-
TP18C	2006_ENVR_TP18C	Delineation Sampling	EnviroRisk Dec 2005	2	-	-	-	-	-
TP18C	2006_ENVR_TP18C	Delineation Sampling	EnviroRisk Dec 2005	2.5	-	-	-	-	-
TP18D	2006_ENVR_TP18D	Delineation Sampling	EnviroRisk Dec 2005	1	-	-	-	-	-
TP18D	2006_ENVR_TP18D	Delineation Sampling	EnviroRisk Dec 2005	2	-	-	-	-	-
TP18D	2006_ENVR_TP18D	Delineation Sampling	EnviroRisk Dec 2005	2.7	-	-	-	-	-
TP18E	2006_ENVR_TP18E	Delineation Sampling	EnviroRisk Dec 2005	1	-	-	-	-	-
TP18E	2006_ENVR_TP18E	Delineation Sampling	EnviroRisk Dec 2005	2	-	-	-	-	-
TP18E	2006_ENVR_TP18E	Delineation Sampling	EnviroRisk Dec 2005	2.5	-	-	-	-	-
TP18F	2006_ENVR_TP18F	Delineation Sampling	EnviroRisk Dec 2005	1	-	-	-	-	-
TP18F	2006_ENVR_TP18F	Delineation Sampling	EnviroRisk Dec 2005	2	-	-	-	-	-
TP18F	2006_ENVR_TP18F	Delineation Sampling	EnviroRisk Dec 2005	2.5	-	-	-	-	-

Table 2 - Historical Soil Results, Medium-High Density Residential Land Use Sample Locations

					Benzo(a)anthracene	Benzo(a)pyrene	Benzo(b)fluoranthene	Benzo(k)fluoranthene	Benzo(e)pyrene	Benzo(g,h,i)perylene
					mg/kg	mg/kg	mg/kg	mg/kg	mg/kg	mg/kg
ECL					0.1	0.2	0.2	0.2	0.2	0.1
NEPM 2013 Table 1A(1) HILs Residential B Soil										
NEPM 2013 Table 7 HSLs for Asbestos in Soil - Residential B Soil										
NEPM 2013 Table 1B(1-4) Generic & Site Specific EIL - Urban Res & Public Open Space*										
NEPM 2013 Table 1B(6) ESLs for Urban Res, Coarse Soil >=0m, <2m										
NEPM 2013 Table 1B(6) ESLs for Urban Res, Fine Soil >=0m, <2m										
NEPM 2013 Table 1B(7) Management Limits in Res / Parkland, Coarse Soil										
NEPM 2013 Table 1B(7) Management Limits in Res / Parkland, Fine Soil										
ANZG 2018 DGV Toxicant values for Sediments (Table 1)										
NEPM 2013 Table 1A(3) Res A/B Soil HSL for Vapour Intrusion, Clay										
>=0m, <1m										
>=1m, <2m										
>=2m, <4m										
>=4m										
NEPM 2013 Table 1A(3) Res A/B Soil HSL for Vapour Intrusion, Sand										
>=0m, <1m										
>=1m, <2m										
>=2m, <4m										
>=4m										
NEPM 2013 Table 1A(3) Res A/B Soil HSL for Vapour Intrusion, Silt										
>=0m, <1m										
>=1m, <2m										
>=2m, <4m										
>=4m										
Field ID	Location Code	Description	Sampled Date	Sample Depth (m)	Benzo(a)anthracene	Benzo(a)pyrene	Benzo(b)fluoranthene	Benzo(k)fluoranthene	Benzo(e)pyrene	Benzo(g,h,i)perylene
<b>Environmental Strategies (2014), Phase 2 Detailed Site Investigation</b>										
BH43	2014_ES_BH43	Area A	2014	0.2	-	-	-	-	-	-
BH43	2014_ES_BH43	Area A	2014	1	-	-	-	-	-	-
ES1	2014_ES_ES1	Area A	2014	0.5	-	-	-	-	-	-
ES2	2014_ES_ES2	Area A	2014	1.5	-	-	-	-	-	-
MW4	2014_ES_MW4	Area A	2014	0.5	-	-	-	-	-	-
MW4	2014_ES_MW4	Area A	2014	1	-	-	-	-	-	-
MW5	2014_ES_MW5	Area A	2014	0.2	-	-	-	-	-	-
TP07	2014_ES_TP07	Area B	2014	0.2	-	-	-	-	-	-
TP07	2014_ES_TP07	Area B	2014	1.75	-	-	-	-	-	-
TP08	2014_ES_TP08	Area B	2014	0.2	-	-	-	-	-	-
TP08	2014_ES_TP08	Area B	2014	2.35	-	-	-	-	-	-
TP33	2014_ES_TP33	Area B	2014	0.2	-	-	-	-	-	-
TP33	2014_ES_TP33	Area B	2014	2.3	-	-	-	-	-	-
TP34	2014_ES_TP34	Area B	2014	0.2	-	-	-	-	-	-
TP34	2014_ES_TP34	Area B	2014	1.4	-	-	-	-	-	-
TP12	2014_ES_TP12	Area C	2014	0.2	-	-	-	-	-	-
TP12	2014_ES_TP12	Area C	2014	0.55	-	-	-	-	-	-
TP14	2014_ES_TP14	Area C	2014	0.2	-	-	-	-	-	-
TP14	2014_ES_TP14	Area C	2014	0.65	-	-	-	-	-	-
TP21	2014_ES_TP21	Area C	2014	0.2	-	-	-	-	-	-
TP21	2014_ES_TP21	Area C	2014	1	-	-	-	-	-	-
TP22	2014_ES_TP22	Area C	2014	0.2	-	-	-	-	-	-
TP22	2014_ES_TP22	Area C	2014	0.9	-	-	-	-	-	-
TP23	2014_ES_TP23	Area C	2014	0.2	-	-	-	-	-	-
TP23	2014_ES_TP23	Area C	2014	0.7	-	-	-	-	-	-
TP31	2014_ES_TP31	Area C	2014	1.1	-	-	-	-	-	-
TP31	2014_ES_TP31	Area C	2014	1.9	-	-	-	-	-	-
TP32	2014_ES_TP32	Area C	2014	1.2	-	-	-	-	-	-
TP32	2014_ES_TP32	Area C	2014	1.8	-	-	-	-	-	-
TP38	2014_ES_TP38	Area C	2014	1	-	-	-	-	-	-
TP38	2014_ES_TP38	Area C	2014	3.1	-	-	-	-	-	-
SEDSR	2014_ES_SEDSR	Area E - Sediment Samples	02-Apr-14	0.2-0.4	-	-	-	-	-	-
<b>Acadis (2017a), Additional Environmental Assessment</b>										
TP1	2017_ARC_TP1	-	10-Jan-17	0.5	-	-	-	-	-	-
TP34	2017_ARC_TP34	-	12-Jan-17	1	-	-	-	-	-	-
TP9	2017_ARC_TP9	-	10-Jan-17	1	-	-	-	-	-	-
TP10	2017_ARC_TP10	-	10-Jan-17	0.5	<0.1	-	-	-	<0.1	-
TP10	2017_ARC_TP10	-	10-Jan-17	1	-	-	-	-	-	-
TP11	2017_ARC_TP11	-	10-Jan-17	0.5	-	-	-	-	-	-
TP2	2017_ARC_TP2	-	10-Jan-17	1	-	-	-	-	-	-
TP17	2017_ARC_TP17	-	11-Jan-17	0.5	-	-	-	-	-	-
TP21	2017_ARC_TP21	-	11-Jan-17	1	-	-	-	-	-	-
TP3	2017_ARC_TP3	-	10-Jan-17	0.5	-	-	-	-	-	-

Table 2 - Historical Soil Results, Medium-High Density Residential Land Use Sample Locations

					Roanet	Terbufos	Trichloronate	Tetraachlovinphos	Bromophos-ethyl
					mg/kg	mg/kg	mg/kg	mg/kg	mg/kg
					0.1	0.2	0.2	0.2	0.1
EOL									
NEPM 2013 Table 1A(1) HILs Residential B Soil									
NEPM 2013 Table 7 HSLs for Asbestos in Soil - Residential B Soil									
NEPM 2013 Table 1B(1-4) Generic & Site Specific EIL - Urban Res & Public Open Space*									
NEPM 2013 Table 1B(6) ESLs for Urban Res, Coarse Soil >=0m, <2m									
NEPM 2013 Table 1B(6) ESLs for Urban Res, Fine Soil >=0m, <2m									
NEPM 2013 Table 1B(7) Management Limits in Res / Parkland, Coarse Soil									
NEPM 2013 Table 1B(7) Management Limits in Res / Parkland, Fine Soil									
ANZG 2018 DGV Toxicant values for Sediments (Table 1)									
NEPM 2013 Table 1A(3) Res A/B Soil HSL for Vapour Intrusion, Clay									
>=0m, <1m									
>=1m, <2m									
>=2m, <4m									
>=4m									
NEPM 2013 Table 1A(3) Res A/B Soil HSL for Vapour Intrusion, Sand									
>=0m, <1m									
>=1m, <2m									
>=2m, <4m									
>=4m									
NEPM 2013 Table 1A(3) Res A/B Soil HSL for Vapour Intrusion, Silt									
>=0m, <1m									
>=1m, <2m									
>=2m, <4m									
>=4m									
Field ID	Location Code	Description	Sampled Date	Sample Depth (m)					
<b>Arcadis (2018), Additional Environmental Assessment - Production Area</b>									
ABH4	2018_ARC_ABH4	-	28-Nov-17	0.5	-	-	-	-	-
ABH4	2018_ARC_ABH4	-	28-Nov-17	1.5	-	-	-	-	-
ABH4	2018_ARC_ABH4	-	28-Nov-17	3	-	-	-	-	-
<b>Arcadis (2018), Flue, Stack and Powerhouse Assessment</b>									
SS3	2018_ARC_SS3	SS3	19-Feb-18	-	-	-	-	-	-
SS2	2018_ARC_SS2	SS2	19-Feb-18	-	-	-	-	-	-
SS3	2018_ARC_SS3	SS3	19-Feb-18	-	-	-	-	-	-
SS4	2018_ARC_SS4	SS4	19-Feb-18	-	-	-	-	-	-
<b>Reditus 2020 Data Gap Investigation</b>									
RCTP2_1.0	2020_Red_RCTP2	-	25-Mar-20	1	<0.2	<0.2	<0.2	<0.2	-
RCTP2_2.5	2020_Red_RCTP2	-	25-Mar-20	2.5	-	-	-	-	-
RCTP9_0.5	2020_Red_RCTP9	-	25-Mar-20	0.5	<0.2	<0.2	<0.2	<0.2	-
RCTP9_2.1	2020_Red_RCTP9	-	25-Mar-20	2.1	<0.2	<0.2	<0.2	<0.2	-
RCTP9_3.3	2020_Red_RCTP9	-	25-Mar-20	3.3	-	-	-	-	-
RCTP9_4.1	2020_Red_RCTP9	-	25-Mar-20	4.1	-	-	-	-	-
RCTP10_0.5	2020_Red_RCTP10	-	25-Mar-20	0.5	<0.2	<0.2	<0.2	<0.2	-
RCTP10_1.0	2020_Red_RCTP10	-	25-Mar-20	1	<0.2	<0.2	<0.2	<0.2	-
RCTP10_1.5	2020_Red_RCTP10	-	25-Mar-20	1.5	-	-	-	-	-
RCTP10_2.0	2020_Red_RCTP10	-	25-Mar-20	2	-	-	-	-	-
RCTP12_1.0	2020_Red_RCTP12	-	25-Mar-20	1	-	-	-	-	-
RCTP12_2.2	2020_Red_RCTP12	-	25-Mar-20	2.2	-	-	-	-	-
RCTP12_4.0	2020_Red_RCTP12	-	25-Mar-20	4	-	-	-	-	-
RCTP12_5.5	2020_Red_RCTP12	-	25-Mar-20	5.5	-	-	-	-	-

\*Generic & site-specific EIL values adopted from Arcadis (2019) RAP Appendix C, Table 2.  
\*\*Chromium III+IV HIL values adopted from Arcadis (2019) RAP Appendix C, Table 6.

**Comments**

- ND - No asbestos detected at the laboratory limit of reporting (0.1 g/kg)
- #1 Carcinogenic PAHs: HIL based on 8 carc. PAHs & their TEFs (rel to BaP ref Schedule 7) BaP TEQ calc: by multiplying the conc of each carc. PAH in sample by its BaP TEF (ref Table B7)
- #2 Arsenic: HIL assumes 70% oral bioavailability. Site-specific bioavailability maybe important and should be considered where appropriate (refer Schedule B7).
- #3 Lead: HILs A,B,C based on blood lead models (IEUBK & HIL D on adult lead model for where 50% bioavailability considered. Site-specific bioavailability should be considered where appropriate).
- #4 Elemental mercury: HIL does not address elemental mercury, a site specific assessment should be considered if elemental mercury is present, or suspected to be present.
- #5 PCBs: HIL refers to non-dioxin like PCBs only. Where PCB source is known, or suspected at a site, a site-specific assessment of exposure to all PCBs (inc dioxin like PCBs) should be considered.
- #6 Aged values apply to arsenic contamination present in soil > 2 years. Refer Schedule B5c for < 2 years.
- #7 To obtain F1 subtract the sum of BTEX concentrations from the C6 - C10 fraction.
- #8 ERRATA Updated 30 April 2014. Naphthalene should not be subtracted.
- #9 Errata 30 April 2014. Naphthalene should not be subtracted from >C.
- #10 Moderate reliability. To obtain F1 subtract the sum of BTEX concentrations from the C6 - C10 fraction.
- #11 Separate management limits for BTEX & naphthalene are not available hence should not be subtracted from the relevant fractions to obtain F1 & F2
- #12 To obtain F2 subtract naphthalene from the >C10 - C16 fraction.
- NL - Derived soil HSL exceeds soil saturation concentration, non-limiting

Table 2 - Historical Soil Results, Medium-High Density Residential Land Use Sample Locations

	Polychlorinated Biphenyls							Halogenated Benzenes	
	Arochlor 1016	Arochlor 1221	Arochlor 1232	Arochlor 1242	Arochlor 1248	Arochlor 1254	Arochlor 1260	PCBs (Sum of total)	Hexachlorobenzene
	mg/kg	mg/kg	mg/kg	mg/kg	mg/kg	mg/kg	mg/kg	mg/kg	mg/kg
ECL	0.1	0.1	0.1	0.1	0.1	0.1	0.1	0.1	0.1
NEPM 2013 Table 1A(1) HILs Residential B Soil								1	15
NEPM 2013 Table 7 HSLs for Asbestos in Soil - Residential B Soil									
NEPM 2013 Table 1B(1-4) Generic & Site Specific EIL - Urban Res & Public Open Space*									
NEPM 2013 Table 1B(6) ESLs for Urban Res, Coarse Soil >=0m, <2m									
NEPM 2013 Table 1B(6) ESLs for Urban Res, Fine Soil >=0m, <2m									
NEPM 2013 Table 1B(7) Management Limits in Res / Parkland, Coarse Soil									
NEPM 2013 Table 1B(7) Management Limits in Res / Parkland, Fine Soil									
ANZG 2018 DGV Toxicant values for Sediments (Table 1)								0.034	
NEPM 2013 Table 1A(3) Res A/B Soil HSL for Vapour Intrusion, Clay									
>=0m, <1m									
>=1m, <2m									
>=2m, <4m									
>=4m									
NEPM 2013 Table 1A(3) Res A/B Soil HSL for Vapour Intrusion, Sand									
>=0m, <1m									
>=1m, <2m									
>=2m, <4m									
>=4m									
NEPM 2013 Table 1A(3) Res A/B Soil HSL for Vapour Intrusion, Silt									
>=0m, <1m									
>=1m, <2m									
>=2m, <4m									
>=4m									

Field ID	Location Code	Description	Sampled Date	Sample Depth (m)									
ADI Limited (1996), Stage 1 Site Investigation Report													
P10	1996_ADI_P10	-	ADI February 1996	0.3	-	-	-	-	-	-	-	-	-
P12	1996_ADI_P12	-	ADI February 1996	0.2	-	-	-	-	-	-	-	-	-
P12	1996_ADI_P12	-	ADI February 1996	0.8	-	-	-	-	-	-	-	-	-
P50	1996_ADI_P50	-	ADI February 1996	0.5	-	-	-	-	-	-	-	-	-
P50	1996_ADI_P50	-	ADI February 1996	2.3	-	-	-	-	-	-	-	-	-
P51	1996_ADI_P51	-	ADI February 1996	2.4	-	-	-	-	-	-	-	-	-
P51	1996_ADI_P51	-	ADI February 1996	3.6	-	-	-	-	-	-	-	-	-
P54	1996_ADI_P54	-	ADI February 1996	0.2	-	-	-	-	-	-	-	-	-
P54	1996_ADI_P54	-	ADI February 1996	0.9	-	-	-	-	-	-	-	-	-
P54	1996_ADI_P54	-	ADI February 1996	1.7	-	-	-	-	-	-	-	-	-
P56	1996_ADI_P56	-	ADI February 1996	0.2	-	-	-	-	-	-	-	-	-
BH5	1996_ADI_BH5	-	ADI February 1996	0.5	-	-	-	-	-	-	-	-	-
BH5	1996_ADI_BH5	-	ADI February 1996	2	-	-	-	-	-	-	-	-	-
BH8	1996_ADI_BH8	-	ADI February 1996	0.5	-	-	-	-	-	-	-	-	-
BH8	1996_ADI_BH8	-	ADI February 1996	1.3	-	-	-	-	-	-	-	-	-
BH8	1996_ADI_BH8	-	ADI February 1996	4	-	-	-	-	-	-	-	-	-
W17	1996_ADI_W17	-	ADI February 1996	1.1	-	-	-	-	-	-	-	-	-
W17	1996_ADI_W17	-	ADI February 1996	1.45	-	-	-	-	-	-	-	-	-
W17	1996_ADI_W17	-	ADI February 1996	2.1	-	-	-	-	-	-	-	-	-
W25	1996_ADI_W25	-	ADI February 1996	1.3	-	-	-	-	-	-	-	-	-
S11	1996_ADI_S11	-	ADI February 1996	0.2	-	-	-	-	-	-	-	-	-
S11	1996_ADI_S11	-	ADI February 1996	1.5	-	-	-	-	-	-	-	-	-
S36	1996_ADI_S36	-	ADI February 1996	0.6	-	-	-	-	-	-	-	-	-
S36	1996_ADI_S36	-	ADI February 1996	1.7	-	-	-	-	-	-	-	-	-
B18	1996_ADI_B18	-	ADI February 1996	1.5	-	-	-	-	-	-	-	-	-

Table 2 - Historical Soil Results, Medium-High Density Residential Land Use Sample Locations

	Polychlorinated Biphenyls							Halogenated Benzenes	
	Arochlor 1016	Arochlor 1221	Arochlor 1232	Arochlor 1242	Arochlor 1248	Arochlor 1254	Arochlor 1260	PCBs (Sum of total)	Hexachlorobenzene
	mg/kg	mg/kg	mg/kg	mg/kg	mg/kg	mg/kg	mg/kg	mg/kg	mg/kg
ECL	0.1	0.1	0.1	0.1	0.1	0.1	0.1	0.1	0.1
NEPM 2013 Table 1A(1) HUs Residential B Soil								1	15
NEPM 2013 Table 7 HUs for Asbestos in Soil - Residential B Soil									
NEPM 2013 Table 1B(1-4) Generic & Site Specific EIL - Urban Res & Public Open Space*									
NEPM 2013 Table 1B(6) ESLs for Urban Res, Coarse Soil >=0m, <2m									
NEPM 2013 Table 1B(6) ESLs for Urban Res, Fine Soil >=0m, <2m									
NEPM 2013 Table 1B(7) Management Limits in Res / Parkland, Coarse Soil									
NEPM 2013 Table 1B(7) Management Limits in Res / Parkland, Fine Soil									
ANZG 2018 DGV Toxicant values for Sediments (Table 1)								0.034	
NEPM 2013 Table 1A(3) Res A/B Soil HSL for Vapour Intrusion, Clay									
>=0m, <1m									
>=1m, <2m									
>=2m, <4m									
>=4m									
NEPM 2013 Table 1A(3) Res A/B Soil HSL for Vapour Intrusion, Sand									
>=0m, <1m									
>=1m, <2m									
>=2m, <4m									
>=4m									
NEPM 2013 Table 1A(3) Res A/B Soil HSL for Vapour Intrusion, Silt									
>=0m, <1m									
>=1m, <2m									
>=2m, <4m									
>=4m									

Field ID	Location Code	Description	Sampled Date	Sample Depth (m)																
EnviroRisk (2006), Phase 2 Environmental (Site Contamination) Assessment																				
BH8	2006_ENVR_BH8	Grid Pattern Samples	EnviroRisk Dec 2005	0.1	-	-	-	-	-	-	-	-	-	-	-	-	-	-	-	-
BH8	2006_ENVR_BH8	Grid Pattern Samples	EnviroRisk Dec 2005	0.5	-	-	-	-	-	-	-	-	-	-	-	-	-	-	-	-
BH8	2006_ENVR_BH8	Grid Pattern Samples	EnviroRisk Dec 2005	1	-	-	-	-	-	-	-	-	-	-	-	-	-	-	-	-
BH13	2006_ENVR_BH13	Grid Pattern Samples	EnviroRisk Dec 2005	1	-	-	-	-	-	-	-	-	-	-	-	-	-	-	-	-
BH13	2006_ENVR_BH13	Grid Pattern Samples	EnviroRisk Dec 2005	1.5	-	-	-	-	-	-	-	-	-	-	-	-	-	-	-	-
BH13	2006_ENVR_BH13	Grid Pattern Samples	EnviroRisk Dec 2005	2	-	-	-	-	-	-	-	-	-	-	-	-	-	-	-	-
BH14	2006_ENVR_BH14	Grid Pattern Samples	EnviroRisk Dec 2005	1	-	-	-	-	-	-	-	-	-	-	-	-	-	-	-	-
BH14	2006_ENVR_BH14	Grid Pattern Samples	EnviroRisk Dec 2005	1.5	-	-	-	-	-	-	-	-	-	-	-	-	-	-	-	-
BH14	2006_ENVR_BH14	Grid Pattern Samples	EnviroRisk Dec 2005	2.4	-	-	-	-	-	-	-	-	-	-	-	-	-	-	-	-
BH15	2006_ENVR_BH15	Grid Pattern Samples	EnviroRisk Dec 2005	0.1	-	-	-	-	-	-	-	-	-	-	-	-	-	-	-	-
BH15	2006_ENVR_BH15	Grid Pattern Samples	EnviroRisk Dec 2005	1	-	-	-	-	-	-	-	-	-	-	-	-	-	-	-	-
BH16	2006_ENVR_BH16	Grid Pattern Samples	EnviroRisk Dec 2005	4	-	-	-	-	-	-	-	-	-	-	-	-	-	-	-	-
BH18	2006_ENVR_BH18	Judgemental Samples	EnviroRisk Dec 2005	1	-	-	-	-	-	-	-	-	-	-	-	-	-	-	-	-
BH18	2006_ENVR_BH18	Judgemental Samples	EnviroRisk Dec 2005	2	-	-	-	-	-	-	-	-	-	-	-	-	-	-	-	-
BH18	2006_ENVR_BH18	Judgemental Samples	EnviroRisk Dec 2005	3	-	-	-	-	-	-	-	-	-	-	-	-	-	-	-	-
BH21	2006_ENVR_BH21	Judgemental Samples	EnviroRisk Dec 2005	0.5	-	-	-	-	-	-	-	-	-	-	-	-	-	-	-	-
BH21	2006_ENVR_BH21	Judgemental Samples	EnviroRisk Dec 2005	1	-	-	-	-	-	-	-	-	-	-	-	-	-	-	-	-
TP18A	2006_ENVR_TP18A	Delineation Sampling	EnviroRisk Dec 2005	1	-	-	-	-	-	-	-	-	-	-	-	-	-	-	-	-
TP18A	2006_ENVR_TP18A	Delineation Sampling	EnviroRisk Dec 2005	2	-	-	-	-	-	-	-	-	-	-	-	-	-	-	-	-
TP18A	2006_ENVR_TP18A	Delineation Sampling	EnviroRisk Dec 2005	2.5	-	-	-	-	-	-	-	-	-	-	-	-	-	-	-	-
TP18B	2006_ENVR_TP18B	Delineation Sampling	EnviroRisk Dec 2005	1	-	-	-	-	-	-	-	-	-	-	-	-	-	-	-	-
TP18B	2006_ENVR_TP18B	Delineation Sampling	EnviroRisk Dec 2005	2	-	-	-	-	-	-	-	-	-	-	-	-	-	-	-	-
TP18B	2006_ENVR_TP18B	Delineation Sampling	EnviroRisk Dec 2005	2.5	-	-	-	-	-	-	-	-	-	-	-	-	-	-	-	-
TP18C	2006_ENVR_TP18C	Delineation Sampling	EnviroRisk Dec 2005	1	-	-	-	-	-	-	-	-	-	-	-	-	-	-	-	-
TP18C	2006_ENVR_TP18C	Delineation Sampling	EnviroRisk Dec 2005	2	-	-	-	-	-	-	-	-	-	-	-	-	-	-	-	-
TP18C	2006_ENVR_TP18C	Delineation Sampling	EnviroRisk Dec 2005	2.5	-	-	-	-	-	-	-	-	-	-	-	-	-	-	-	-
TP18D	2006_ENVR_TP18D	Delineation Sampling	EnviroRisk Dec 2005	1	-	-	-	-	-	-	-	-	-	-	-	-	-	-	-	-
TP18D	2006_ENVR_TP18D	Delineation Sampling	EnviroRisk Dec 2005	2	-	-	-	-	-	-	-	-	-	-	-	-	-	-	-	-
TP18D	2006_ENVR_TP18D	Delineation Sampling	EnviroRisk Dec 2005	2.7	-	-	-	-	-	-	-	-	-	-	-	-	-	-	-	-
TP18E	2006_ENVR_TP18E	Delineation Sampling	EnviroRisk Dec 2005	1	-	-	-	-	-	-	-	-	-	-	-	-	-	-	-	-
TP18E	2006_ENVR_TP18E	Delineation Sampling	EnviroRisk Dec 2005	2	-	-	-	-	-	-	-	-	-	-	-	-	-	-	-	-
TP18E	2006_ENVR_TP18E	Delineation Sampling	EnviroRisk Dec 2005	2.5	-	-	-	-	-	-	-	-	-	-	-	-	-	-	-	-
TP18F	2006_ENVR_TP18F	Delineation Sampling	EnviroRisk Dec 2005	1	-	-	-	-	-	-	-	-	-	-	-	-	-	-	-	-
TP18F	2006_ENVR_TP18F	Delineation Sampling	EnviroRisk Dec 2005	2	-	-	-	-	-	-	-	-	-	-	-	-	-	-	-	-
TP18F	2006_ENVR_TP18F	Delineation Sampling	EnviroRisk Dec 2005	2.5	-	-	-	-	-	-	-	-	-	-	-	-	-	-	-	-

Table 2 - Historical Soil Results, Medium-High Density Residential Land Use Sample Locations

	Polychlorinated Biphenyls							Halogenated Benzenes	
	Arochlor 1016	Arochlor 1221	Arochlor 1232	Arochlor 1242	Arochlor 1248	Arochlor 1254	Arochlor 1260	PCBs (Sum of total)	Hexachlorobenzene
	mg/kg	mg/kg	mg/kg	mg/kg	mg/kg	mg/kg	mg/kg	mg/kg	mg/kg
ECL	0.1	0.1	0.1	0.1	0.1	0.1	0.1	0.1	0.1
NEPM 2013 Table 1A(1) HILs Residential B Soil								1	15
NEPM 2013 Table 7 HSLs for Asbestos in Soil - Residential B Soil									
NEPM 2013 Table 1B(1-4) Generic & Site Specific EIL - Urban Res & Public Open Space*									
NEPM 2013 Table 1B(6) ESLs for Urban Res, Coarse Soil >=0m, <2m									
NEPM 2013 Table 1B(6) ESLs for Urban Res, Fine Soil >=0m, <2m									
NEPM 2013 Table 1B(7) Management Limits in Res / Parkland, Coarse Soil									
NEPM 2013 Table 1B(7) Management Limits in Res / Parkland, Fine Soil									
ANZG 2018 DGV Toxicant values for Sediments (Table 1)								0.034	
NEPM 2013 Table 1A(3) Res A/B Soil HSL for Vapour Intrusion, Clay									
>=0m, <1m									
>=1m, <2m									
>=2m, <4m									
>=4m									
NEPM 2013 Table 1A(3) Res A/B Soil HSL for Vapour Intrusion, Sand									
>=0m, <1m									
>=1m, <2m									
>=2m, <4m									
>=4m									
NEPM 2013 Table 1A(3) Res A/B Soil HSL for Vapour Intrusion, Silt									
>=0m, <1m									
>=1m, <2m									
>=2m, <4m									
>=4m									

Field ID	Location Code	Description	Sampled Date	Sample Depth (m)									
<b>Environmental Strategies (2014), Phase 2 Detailed Site Investigation</b>													
BH43	2014_ES_BH43	Area A	2014	0.2	-	-	-	-	-	-	-	-	-
BH43	2014_ES_BH43	Area A	2014	1	-	-	-	-	-	-	-	-	-
ES1	2014_ES_ES1	Area A	2014	0.5	-	-	-	-	-	-	-	-	-
ES2	2014_ES_ES2	Area A	2014	1.5	-	-	-	-	-	-	-	-	-
MW4	2014_ES_MW4	Area A	2014	0.5	-	-	-	-	-	-	-	-	-
MW4	2014_ES_MW4	Area A	2014	1	-	-	-	-	-	-	-	-	-
MW5	2014_ES_MW5	Area A	2014	0.2	-	-	-	-	-	-	-	-	-
TP07	2014_ES_TP07	Area B	2014	0.2	-	-	-	-	-	-	-	-	-
TP07	2014_ES_TP07	Area B	2014	1.75	-	-	-	-	-	-	-	-	-
TP08	2014_ES_TP08	Area B	2014	0.2	-	-	-	-	-	-	-	-	-
TP08	2014_ES_TP08	Area B	2014	2.35	-	-	-	-	-	-	-	-	-
TP33	2014_ES_TP33	Area B	2014	0.2	-	-	-	-	-	-	-	-	-
TP33	2014_ES_TP33	Area B	2014	2.3	-	-	-	-	-	-	-	-	-
TP34	2014_ES_TP34	Area B	2014	0.2	-	-	-	-	-	-	-	-	-
TP34	2014_ES_TP34	Area B	2014	1.4	-	-	-	-	-	-	-	-	-
TP12	2014_ES_TP12	Area C	2014	0.2	-	-	-	-	-	-	-	-	-
TP12	2014_ES_TP12	Area C	2014	0.55	-	-	-	-	-	-	-	-	-
TP14	2014_ES_TP14	Area C	2014	0.2	-	-	-	-	-	-	-	-	-
TP14	2014_ES_TP14	Area C	2014	0.65	-	-	-	-	-	-	-	-	-
TP21	2014_ES_TP21	Area C	2014	0.2	-	-	-	-	-	-	-	-	-
TP21	2014_ES_TP21	Area C	2014	1	-	-	-	-	-	-	-	-	-
TP22	2014_ES_TP22	Area C	2014	0.2	-	-	-	-	-	-	-	-	-
TP22	2014_ES_TP22	Area C	2014	0.9	-	-	-	-	-	-	-	-	-
TP23	2014_ES_TP23	Area C	2014	0.2	-	-	-	-	-	-	-	-	-
TP23	2014_ES_TP23	Area C	2014	0.7	-	-	-	-	-	-	-	-	-
TP31	2014_ES_TP31	Area C	2014	1.1	-	-	-	-	-	-	-	-	-
TP31	2014_ES_TP31	Area C	2014	1.9	-	-	-	-	-	-	-	-	-
TP32	2014_ES_TP32	Area C	2014	1.2	-	-	-	-	-	-	-	-	-
TP32	2014_ES_TP32	Area C	2014	1.8	-	-	-	-	-	-	-	-	-
TP38	2014_ES_TP38	Area C	2014	1	-	-	-	-	-	-	-	-	-
TP38	2014_ES_TP38	Area C	2014	3.1	-	-	-	-	-	-	-	-	-
SEDSR	2014_ES_SEDSR	Area E - Sediment Samples	02-Apr-14	0.2-0.4	-	-	-	-	-	-	-	-	-
<b>Acadis (2017a), Additional Environmental Assessment</b>													
TP1	2017_ARC_TP1	-	10-Jan-17	0.5	-	-	-	-	-	-	-	-	-
TP34	2017_ARC_TP34	-	12-Jan-17	1	-	-	-	-	-	-	-	-	-
TP9	2017_ARC_TP9	-	10-Jan-17	1	-	-	-	-	-	-	-	-	-
TP10	2017_ARC_TP10	-	10-Jan-17	0.5	<0.1	<0.1	<0.1	<0.1	<0.1	<0.1	<0.1	<0.1	<0.1
TP10	2017_ARC_TP10	-	10-Jan-17	1	-	-	-	-	-	-	-	-	-
TP11	2017_ARC_TP11	-	10-Jan-17	0.5	-	-	-	-	-	-	-	-	-
TP2	2017_ARC_TP2	-	10-Jan-17	1	-	-	-	-	-	-	-	-	-
TP17	2017_ARC_TP17	-	11-Jan-17	0.5	-	-	-	-	-	-	-	-	-
TP21	2017_ARC_TP21	-	11-Jan-17	1	-	-	-	-	-	-	-	-	-
TP3	2017_ARC_TP3	-	10-Jan-17	0.5	-	-	-	-	-	-	-	-	-

Table 2 - Historical Soil Results, Medium-High Density Residential Land Use Sample Locations

	Polychlorinated Biphenyls							Halogenated Benzenes	
	Arochlor 1016	Arochlor 1221	Arochlor 1232	Arochlor 1242	Arochlor 1248	Arochlor 1254	Arochlor 1260	PCBs (Sum of total)	Hexachlorobenzene
	mg/kg	mg/kg	mg/kg	mg/kg	mg/kg	mg/kg	mg/kg	mg/kg	mg/kg
EOL	0.1	0.1	0.1	0.1	0.1	0.1	0.1	0.1	0.1
NEPM 2013 Table 1A(1) HILs Residential B Soil								1	15
NEPM 2013 Table 7 HSLs for Asbestos in Soil - Residential B Soil									
NEPM 2013 Table 1B(1-4) Generic & Site Specific EIL - Urban Res & Public Open Space*									
NEPM 2013 Table 1B(6) ESLs for Urban Res, Coarse Soil >=0m, <2m									
NEPM 2013 Table 1B(6) ESLs for Urban Res, Fine Soil >=0m, <2m									
NEPM 2013 Table 1B(7) Management Limits in Res / Parkland, Coarse Soil									
NEPM 2013 Table 1B(7) Management Limits in Res / Parkland, Fine Soil									
ANZG 2018 DGV Toxicant values for Sediments (Table 1)								0.034	
NEPM 2013 Table 1A(3) Res A/B Soil HSL for Vapour Intrusion, Clay									
>=0m, <1m									
>=1m, <2m									
>=2m, <4m									
>=4m									
NEPM 2013 Table 1A(3) Res A/B Soil HSL for Vapour Intrusion, Sand									
>=0m, <1m									
>=1m, <2m									
>=2m, <4m									
>=4m									
NEPM 2013 Table 1A(3) Res A/B Soil HSL for Vapour Intrusion, Silt									
>=0m, <1m									
>=1m, <2m									
>=2m, <4m									
>=4m									

Field ID	Location Code	Description	Sampled Date	Sample Depth (m)									
<b>Arcadis (2018), Additional Environmental Assessment - Production Area</b>													
ABH4	2018_ARC_ABH4	-	28-Nov-17	0.5	-	-	-	-	-	-	-	-	-
ABH4	2018_ARC_ABH4	-	28-Nov-17	1.5	-	-	-	-	-	-	-	-	-
ABH4	2018_ARC_ABH4	-	28-Nov-17	3	-	-	-	-	-	-	-	-	-
<b>Arcadis (2018), Flue, Stack and Powerhouse Assessment</b>													
SS3	2018_ARC_SS3	SS3	19-Feb-18	-	<0.1	<0.1	<0.1	<0.1	<0.1	<0.1	<0.1	<0.1	-
SS2	2018_ARC_SS2	SS2	19-Feb-18	-	-	-	-	-	-	-	-	-	-
SS3	2018_ARC_SS3	SS3	19-Feb-18	-	-	-	-	-	-	-	-	-	-
SS4	2018_ARC_SS4	SS4	19-Feb-18	-	-	-	-	-	-	-	-	-	-
<b>Reditus 2020 Data Gap Investigation</b>													
RCTP2_1.0	2020_Red_RCTP2	-	25-Mar-20	1	-	-	-	-	-	-	-	-	<0.5
RCTP2_2.5	2020_Red_RCTP2	-	25-Mar-20	2.5	-	-	-	-	-	-	-	-	-
RCTP9_0.5	2020_Red_RCTP9	-	25-Mar-20	0.5	-	-	-	-	-	-	-	-	<0.5
RCTP9_2.1	2020_Red_RCTP9	-	25-Mar-20	2.1	-	-	-	-	-	-	-	-	<0.5
RCTP9_3.3	2020_Red_RCTP9	-	25-Mar-20	3.3	-	-	-	-	-	-	-	-	-
RCTP9_4.1	2020_Red_RCTP9	-	25-Mar-20	4.1	-	-	-	-	-	-	-	-	-
RCTP10_0.5	2020_Red_RCTP10	-	25-Mar-20	0.5	-	-	-	-	-	-	-	-	<0.5
RCTP10_1.0	2020_Red_RCTP10	-	25-Mar-20	1	-	-	-	-	-	-	-	-	<0.5
RCTP10_1.5	2020_Red_RCTP10	-	25-Mar-20	1.5	-	-	-	-	-	-	-	-	-
RCTP10_2.0	2020_Red_RCTP10	-	25-Mar-20	2	-	-	-	-	-	-	-	-	-
RCTP12_1.0	2020_Red_RCTP12	-	25-Mar-20	1	-	-	-	-	-	-	-	-	-
RCTP12_2.2	2020_Red_RCTP12	-	25-Mar-20	2.2	-	-	-	-	-	-	-	-	-
RCTP12_4.0	2020_Red_RCTP12	-	25-Mar-20	4	-	-	-	-	-	-	-	-	-
RCTP12_5.5	2020_Red_RCTP12	-	25-Mar-20	5.5	-	-	-	-	-	-	-	-	-

\*Generic & site-specific EIL values adopted from Arcadis (2019) RAP Appendix C, Table 2.  
\*\*Chromium III+IV HIL values adopted from Arcadis (2019) RAP Appendix C, Table 6.

Comments

- ND - No asbestos detected at the laboratory limit of reporting (0.1 g/kg)
- #1 Carcinogenic PAHs: HIL based on 8 carc. PAHs & their TEFs (rel to BaP ref Schedule 7) BaP TEQ calc: by multiplying the conc of each carc. PAH in sample by its BaP TEF (ref Table B7)
- #2 Arsenic: HIL assumes 70% oral bioavailability. Site-specific bioavailability maybe important and should be considered where appropriate (refer Schedule B7).
- #3 Lead: HILs A,B,C based on blood lead models (IEUBK & HIL D on adult lead model for where 50% bioavailability considered. Site-specific bioavailability should be considered where appropriate)
- #4 Elemental mercury: HIL does not address elemental mercury, a site specific assessment should be considered if elemental mercury is present, or suspected to be present.
- #5 PCBs: HIL refers to non-dioxin like PCBs only. Where PCB source is known, or suspected at a site, a site-specific assessment of exposure to all PCBs (inc dioxin like PCBs) should be considered.
- #6 Aged values apply to arsenic contamination present in soil > 2 years. Refer Schedule B5c for < 2 years.
- #7 To obtain F1 subtract the sum of BTEX concentrations from the C6 - C10 fraction.
- #8 ERRATA Updated 30 April 2014. Naphthalene should not be subtracted.
- #9 Errata 30 April 2014. Naphthalene should not be subtracted from >C6 - C10 fraction.
- #10 Moderate reliability. To obtain F1 subtract the sum of BTEX concentrations from the C6 - C10 fraction.
- #11 Separate management limits for BTEX & naphthalene are not available hence should not be subtracted from the relevant fractions to obtain F1 & F2
- #12 To obtain F2 subtract naphthalene from the >C10 - C16 fraction.
- NL - Derived soil HSL exceeds soil saturation concentration, non-limiting



Table 3 - Historical Soil Results, Public Open Space Land Use Sample Locations

Asbestos		Metals																	BTEX					Historical compound grouping														
		Asbestos ID in Soil	Asbestos Trace Analysis																Benzene	Toluene	Ethylbenzene	meta & para Xylene	ortho Xylene	Xylene Total	Naphthalene	Total PAH	Total OCP	Total PCB	Total VHC									
Comment	mg/kg	mg/kg	mg/kg	mg/kg	mg/kg	mg/kg	mg/kg	mg/kg	mg/kg	mg/kg	mg/kg	mg/kg	mg/kg	mg/kg	mg/kg	mg/kg	mg/kg	mg/kg												mg/kg	mg/kg	mg/kg	mg/kg	mg/kg	mg/kg	mg/kg	mg/kg	mg/kg
EQL																																						
Detect		Detect																																				
NEPM 2013 Table 1A(1) HILLS Recreational C Soil		300 <sup>2</sup>			90	300 <sup>**</sup>			17,000	600 <sup>1a</sup>	80 <sup>1</sup>			1,200																							300	1
NEPM 2013 Table 7 HSLs for Asbestos in Soil - Residential C Soil	ND	ND																																				
NEPM 2013 Table 1B(1-4) Generic & Site Specific EIL - Urban Res & Public Open Space*			104			408			210	1,116				175																								
NEPM 2013 Table 1B(6) ESIs for Urban Res, Coarse Soil >=0m, <2m																																						
NEPM 2013 Table 1B(6) ESIs for Urban Res, Fine Soil >=0m, <2m																																						
NEPM 2013 Table 1B(7) Management Limits in Res / Parkland, Coarse Soil																																						
NEPM 2013 Table 1B(7) Management Limits in Res / Parkland, Fine Soil																																						
ANZG 2018 DGV Toxicant values for Sediments (Table 1)			20		1.5	80		65	50	0.15				21																							10	
NEPM 2013 Table 1A(3) Rec C Soil HSL for Vapour Intrusion, Clay																																						
>=0m, <1m																																						
>=1m, <2m																																						
>=2m, <4m																																						
>=4m																																						
NEPM 2013 Table 1A(3) Rec C Soil HSL for Vapour Intrusion, Sand																																						
>=0m, <1m																																						
>=1m, <2m																																						
>=2m, <4m																																						
>=4m																																						
NEPM 2013 Table 1A(3) Rec C Soil HSL for Vapour Intrusion, Silt																																						
>=0m, <1m																																						
>=1m, <2m																																						
>=2m, <4m																																						
>=4m																																						



































Table 3 - Historical Soil Results, Public Open Space Land Use Sample Locations

	VOCs in soil																																													
	1,2-dibromoethane	1,2-dichlorobenzene	1,2-dichloroethane	1,2-dichloropropane	1,3,5-trimethylbenzene	1,3-dichlorobenzene	1,3-dichloropropane	1,4-dichlorobenzene	2,2-dichloropropane	2-chlorobutene	2-chlorotoluene	benzene	Bromoacetylene	Bromochloromethane	Bromodichloromethane	Bromofluoromethane	Bromomethane	Carbon tetrachloride	Chlorobenzene	Chlorobromomethane	Chloroethane	Chloroform	Chloromethane	cis-1,2-dichloroethane	cis-1,3-dichloropropane	Cyclohexane	Dibromomethane	Dichlorodifluoromethane	Ethylbenzene	Hexachlorobutadiene	Isopropylbenzene	n-butylbenzene	n-propylbenzene	n-isopropyltoluene	sec-butylbenzene	Styrene	Trichloroethene									
mg/kg	mg/kg	mg/kg	mg/kg	mg/kg	mg/kg	mg/kg	mg/kg	mg/kg	mg/kg	mg/kg	mg/kg	mg/kg	mg/kg	mg/kg	mg/kg	mg/kg	mg/kg	mg/kg	mg/kg	mg/kg	mg/kg	mg/kg	mg/kg	mg/kg	mg/kg	mg/kg	mg/kg	mg/kg	mg/kg	mg/kg	mg/kg	mg/kg	mg/kg	mg/kg	mg/kg	mg/kg	mg/kg	mg/kg	mg/kg	mg/kg						
EQL	1	1	1	1	1	1	1	1	1	1	1	0.2	1	1	1	1	1	1	1	1	1	1	1	1	1	1	1	1	1	1	1	1	1	1	1	1	1	1	1	1	1					
NEPM 2013 Table 1A(1) HILs Recreational C Soil																																														
NEPM 2013 Table 7 HSLs for Asbestos in Soil - Residential C Soil																																														
NEPM 2013 Table 1B(1-4) Generic & Site Specific EIL - Urban Res & Public Open Space*																																														
NEPM 2013 Table 1B(6) EISs for Urban Res, Coarse Soil >=0m, <2m																																														
NEPM 2013 Table 1B(6) EISs for Urban Res, Fine Soil >=0m, <2m																																														
NEPM 2013 Table 1B(7) Management Limits in Res / Parkland, Coarse Soil																																														
NEPM 2013 Table 1B(7) Management Limits in Res / Parkland, Fine Soil																																														
ANZG 2018 DGV Toxicant values for Sediments (Table 1)																																														
NEPM 2013 Table 1A(3) Rec C Soil HSL for Vapour Intrusion, Clay																																														
>=0m, <1m																																														
>=1m, <2m																																														
>=2m, <4m																																														
>=4m																																														
NEPM 2013 Table 1A(3) Rec C Soil HSL for Vapour Intrusion, Sand																																														
>=0m, <1m																																														
>=1m, <2m																																														
>=2m, <4m																																														
>=4m																																														
NEPM 2013 Table 1A(3) Rec C Soil HSL for Vapour Intrusion, Silt																																														
>=0m, <1m																																														
>=1m, <2m																																														
>=2m, <4m																																														
>=4m																																														

\*Generic & site-specific EIL values adopted from Arcadis (2019) RAP Appendix C, Table 2.  
\*\*Chromium III+IV HIL values adopted from Arcadis (2019) RAP Appendix C, Table 6.

Comments  
 ND - No asbestos detected at the laboratory limit of reporting (0.1 g/kg)  
 #1 Carcinogenic PAHs: HIL based on 8 carc. PAHs & their TEFs (rel to BaP ref Schedule 7) BaP TEQ Half calc by multiplying the conc of each carc. PAH in sample by its BaP TEF  
 #2 Arsenic: HIL assumes 70% oral bioavailability. Site-specific bioavailability may be important and should be considered where appropriate (refer Schedule B7).  
 #3 Lead: HILs A,B,C based on blood lead models (IEUBK & HIL D on adult lead model for where 50% bioavailability considered). Site-specific bioavailability should be considered wh  
 #4 Elemental mercury: HIL does not address elemental mercury. A site specific assessment should be considered if elemental mercury is present, or suspected to be present.  
 #5 PCBs: HIL refers to non-dioxin like PCBs only. Where PCB source is known, or suspected at a site, a site-specific assessment of exposure to all PCBs (no dioxin like PCBs) shou  
 #6 Aged values apply to arsenic contamination present in soil > 2 years. Refer Schedule B5c for < 2 years.  
 #7 To obtain F1 subtract the sum of BTEX concentrations from the C6 - C10 fraction.  
 #8 ERRATA Updated 30 April 2014. Naphthalene should not be subtracted.  
 #9 Errata 30 April 2014. Naphthalene should not be subtracted from >C  
 #10 Moderate reliability. To obtain F1 subtract the sum of BTEX concentrations from the C6 - C10 fraction.  
 #11 Separate management limits for BTEX & naphthalene are not available hence should not be subtracted from the relevant fractions to obtain F1 & F2  
 #12 To obtain F2 subtract naphthalene from the >C10 - C16 fraction.  
 NL - Derived soil HSL exceeds soil saturation concentration, non-limiting







Table 3 - Historical Soil Results, Public Open Space Land Use Sample Locations



					Organochlorine Pesticides																				
	tert-butylbenzene	Tetrachloroethene	Toluene	trans-1,2-dichloroethene	trans-1,3-dichloropropene	Trichlorofluoroethane	Vinyl chloride	xylylene (m & p)	xylylene (o)	4,4-DDE	β-BHC	γ-BHC	δ-BHC	Chlordane (cis)	Chlordane (trans)	γ-BHC	DDE	DDT	DDT-DDE+DDO	Heptachlor epoxide	Heptachlor	Heptachlor epoxide	Methoxychlor	Toxaphene	
	mg/kg	mg/kg	mg/kg	mg/kg	mg/kg	mg/kg	mg/kg	mg/kg	mg/kg	mg/kg	mg/kg	mg/kg	mg/kg	mg/kg	mg/kg	mg/kg	mg/kg	mg/kg	mg/kg	mg/kg	mg/kg	mg/kg	mg/kg	mg/kg	mg/kg
EQL	1	1	0.5	1	1	1	1	2	1	0.1	0.1	0.1	0.1	0.1	0.1	0.1	0.1	0.1	0.1	400	10	10	400	1	
NEPM 2013 Table 1A(1) HILs Recreational C Soil																									
NEPM 2013 Table 7 HSLs for Asbestos in Soil - Residential C Soil																									
NEPM 2013 Table 1B(1-4) Generic & Site Specific EIL - Urban Res & Public Open Space*																									
NEPM 2013 Table 1B(6) ESIs for Urban Res, Coarse Soil >=0m, <2m																									
NEPM 2013 Table 1B(6) ESIs for Urban Res, Fine Soil >=0m, <2m																									
NEPM 2013 Table 1B(7) Management Limits in Res / Parkland, Coarse Soil																									
NEPM 2013 Table 1B(7) Management Limits in Res / Parkland, Fine Soil																									
ANZG 2018 DGV Toxicant values for Sediments (Table 1)										0.0014				0.0045			0.0035	0.0012		0.0028			0.0027		0.0009
NEPM 2013 Table 1A(3) Rec C Soil HSL for Vapour Intrusion, Clay																									
>=0m, <1m																									
>=1m, <2m																									
>=2m, <4m																									
>=4m																									
NEPM 2013 Table 1A(3) Rec C Soil HSL for Vapour Intrusion, Sand																									
>=0m, <1m																									
>=1m, <2m																									
>=2m, <4m																									
>=4m																									
NEPM 2013 Table 1A(3) Rec C Soil HSL for Vapour Intrusion, Silt																									
>=0m, <1m																									
>=1m, <2m																									
>=2m, <4m																									
>=4m																									
Field ID	Location Code	Description	Sampled Date	Sample Depth (m)																					
<b>Arcadis (2017a), Additional Environmental Assessment</b>																									
TP4	2017_ARC_TP4		10-Jan-17	1	-	-	-	-	-	-	-	-	-	-	-	-	-	-	-	-	-	-	-	-	-
TP4	2017_ARC_TP4		10-Jan-17	2.5	-	-	-	-	-	-	-	-	-	-	-	-	-	-	-	-	-	-	-	-	-
TP5	2017_ARC_TP5		10-Jan-17	0.5	-	-	-	-	-	-	-	-	-	-	-	-	-	-	-	-	-	-	-	-	-
TP6	2017_ARC_TP6		10-Jan-17	1	-	-	-	-	-	-	-	-	-	-	-	-	-	-	-	-	-	-	-	-	-
TP7	2017_ARC_TP7		10-Jan-17	0.5	-	-	-	-	-	-	-	-	-	-	-	-	-	-	-	-	-	-	-	-	-
TP8	2017_ARC_TP8		10-Jan-17	1	-	-	-	-	-	-	-	-	-	-	-	-	-	-	-	-	-	-	-	-	-
TP12	2017_ARC_TP12		10-Jan-17	1	-	-	-	-	-	-	-	-	-	-	-	-	-	-	-	-	-	-	-	-	-
TP16	2017_ARC_TP16		11-Jan-17	0.5	-	-	-	-	-	-	-	-	-	-	-	-	-	-	-	-	-	-	-	-	-
TP16	2017_ARC_TP16		11-Jan-17	1	-	-	-	-	-	-	-	-	-	-	-	-	-	-	-	-	-	-	-	-	-
TP19	2017_ARC_TP19		11-Jan-17	0.5	-	-	-	-	-	-	-	-	-	-	-	-	-	-	-	-	-	-	-	-	-
TP19	2017_ARC_TP19		11-Jan-17	1	-	-	-	-	-	-	-	-	-	-	-	-	-	-	-	-	-	-	-	-	-
TP20	2017_ARC_TP20		11-Jan-17	1	-	-	-	-	-	-	-	-	-	-	-	-	-	-	-	-	-	-	-	-	-
TP31	2017_ARC_TP31		12-Jan-17	1	-	-	-	-	-	-	-	-	-	-	-	-	-	-	-	-	-	-	-	-	-
TP32	2017_ARC_TP32		12-Jan-17	1	-	-	-	-	-	-	-	-	-	-	-	-	-	-	-	-	-	-	-	-	-
TP22	2017_ARC_TP22		11-Jan-17	1	-	-	-	-	-	-	-	-	-	-	-	-	-	-	-	-	-	-	-	-	-
TP22	2017_ARC_TP22		11-Jan-17	2.5	-	-	-	-	-	-	-	-	-	-	-	-	-	-	-	-	-	-	-	-	-
TP23	2017_ARC_TP23		11-Jan-17	0.5	-	-	-	-	-	-	-	-	-	-	-	-	-	-	-	-	-	-	-	-	-
TP24	2017_ARC_TP24		11-Jan-17	1	-	-	-	-	-	-	-	-	-	-	-	-	-	-	-	-	-	-	-	-	-
TP25	2017_ARC_TP25		11-Jan-17	0.5	-	-	-	-	-	-	-	-	-	-	-	-	-	-	-	-	-	-	-	-	-
TP25	2017_ARC_TP25		11-Jan-17	1	-	-	-	-	-	-	-	-	-	-	-	-	-	-	-	-	-	-	-	-	-
TP26	2017_ARC_TP26		11-Jan-17	0.5	-	-	-	-	-	-	-	-	-	-	-	-	-	-	-	-	-	-	-	-	-
TP27	2017_ARC_TP27		11-Jan-17	0.5	-	-	-	-	-	-	-	-	-	-	-	-	-	-	-	-	-	-	-	-	-
TP28	2017_ARC_TP28		11-Jan-17	0.5	-	-	-	-	-	-	-	-	-	-	-	-	-	-	-	-	-	-	-	-	-
TP28	2017_ARC_TP28		11-Jan-17	4	-	-	-	-	-	-	-	-	-	-	-	-	-	-	-	-	-	-	-	-	-
TP30	2017_ARC_TP30		12-Jan-17	1	-	-	-	-	-	-	-	-	-	-	-	-	-	-	-	-	-	-	-	-	-
TP33	2017_ARC_TP33		12-Jan-17	0.5	-	-	-	-	-	-	-	-	-	-	-	-	-	-	-	-	-	-	-	-	-
SED D112	2017_ARC_SED D112		13-Jan-17	Sediment	-	-	-	-	-	-	-	-	-	-	-	-	-	-	-	-	-	-	-	-	-
SED D113	2017_ARC_SED D113		13-Jan-17	Sediment	-	-	-	-	-	-	-	-	-	-	-	-	-	-	-	-	-	-	-	-	-
SED D211	2017_ARC_SED D211		13-Jan-17	Sediment	-	-	-	-	-	-	-	-	-	-	-	-	-	-	-	-	-	-	-	-	-
SED D212	2017_ARC_SED D212		13-Jan-17	Sediment	-	-	-	-	-	-	-	-	-	-	-	-	-	-	-	-	-	-	-	-	-
SED D213	2017_ARC_SED D213		13-Jan-17	Sediment	-	-	-	-	-	-	-	-	-	-	-	-	-	-	-	-	-	-	-	-	-
<b>Arcadis (2018), Additional Environmental Assessment - Production Area</b>																									
ABH5	2018_ARC_ABH5		28-Nov-17	0.2	-	-	-	-	-	-	-	-	-	-	-	-	-	-	-	-	-	-	-	-	-
ABH5	2018_ARC_ABH5		28-Nov-17	1	<1	<1	<1	<1	<1	<1	<1	<1	<1	<1	<1	<1	<1	<1	<1	<1	<1	<1	<1	<1	<1
ABH5	2018_ARC_ABH5		28-Nov-17	2	-	-	-	-	-	-	-	-	-	-	-	-	-	-	-	-	-	-	-	-	-
ABH6	2018_ARC_ABH6		28-Nov-17	0.5	-	-	-	-	-	-	-	-	-	-	-	-	-	-	-	-	-	-	-	-	-
ABH6	2018_ARC_ABH6		28-Nov-17	1.5	<1	<1	<1	<1	<1	<1	<1	<1	<1	<1	<1	<1	<1	<1	<1	<1	<1	<1	<1	<1	<1
ABH6	2018_ARC_ABH6		28-Nov-17	4.5	-	-	-	-	-	-	-	-	-	-	-	-	-	-	-	-	-	-	-	-	-
<b>Arcadis (2018), Flue, Stack and Powerhouse Assessment</b>																									
SS1	2018_ARC_SS1	SS1	19-Feb-18	-	-	-	-	-	-	-	-	-	-	-	-	-	-	-	-	-	-	-	-	-	-
SS5	2018_ARC_SS5	SS5	19-Feb-18	-	-	-	-	-	-	-	-	-	-	-	-	-	-	-	-	-	-	-	-	-	-









Table 3 - Historical Soil Results, Public Open Space Land Use Sample Locations

	Organophosphorous Pesticides																																									
	Tokuthion	Alfopphos methyl	Basstar (Sulprofos)	Chlorfenvinphos	Chlorpyrifos	Chlorpyrifos-methyl	Coumaphos	Demeton-O	Demeton-S	Diazinon	Dichlorvos	Dimethoate	Disulfoton	Ethion	Ethoxyzip	Fenitrothion	Fensulfathion	Fenthion	EPN	Malathion	Mepiphos	Methyl parathion	Mevinphos (Phosdrin)	Monocrotophos	Naled (Dibrom)	Omethoate	Parathion	Phorate	Prinphos-methyl	Pyrazophos	Quinal	Terbufos	Trichloronate	Tetrachlorinphos								
mg/kg	mg/kg	mg/kg	mg/kg	mg/kg	mg/kg	mg/kg	mg/kg	mg/kg	mg/kg	mg/kg	mg/kg	mg/kg	mg/kg	mg/kg	mg/kg	mg/kg	mg/kg	mg/kg	mg/kg	mg/kg	mg/kg	mg/kg	mg/kg	mg/kg	mg/kg	mg/kg	mg/kg	mg/kg	mg/kg	mg/kg	mg/kg	mg/kg	mg/kg	mg/kg	mg/kg	mg/kg	mg/kg					
EQL	0.2	0.1	0.2	0.2	0.1	0.1	2	0.2	0.2	0.1	0.1	0.1	0.2	0.1	0.2	0.1	0.2	0.2	0.2	0.2	0.1	0.2	0.2	2	0.2	2	0.1	0.2	0.2	0.2	0.2	0.1	0.2	0.2	0.2	0.2						
NEPM 2013 Table 1A(1) Hills Recreational C Soil	250																																									
NEPM 2013 Table 7 HSLs for Asbestos in Soil - Residential C Soil																																										
NEPM 2013 Table 1B(1-4) Generic & Site Specific EIL - Urban Res & Public Open Space*																																										
NEPM 2013 Table 1B(6) ESIs for Urban Res, Coarse Soil >=0m, <2m																																										
NEPM 2013 Table 1B(6) ESIs for Urban Res, Fine Soil >=0m, <2m																																										
NEPM 2013 Table 1B(7) Management Limits in Res / Parkland, Coarse Soil																																										
NEPM 2013 Table 1B(7) Management Limits in Res / Parkland, Fine Soil																																										
ANZG 2018 DGV Toxicant values for Sediments (Table 1)																																										
NEPM 2013 Table 1A(3) Rec C Soil HSL for Vapour Intrusion, Clay																																										
>=0m, <1m																																										
>=1m, <2m																																										
>=2m, <4m																																										
>=4m																																										
NEPM 2013 Table 1A(3) Rec C Soil HSL for Vapour Intrusion, Sand																																										
>=0m, <1m																																										
>=1m, <2m																																										
>=2m, <4m																																										
>=4m																																										
NEPM 2013 Table 1A(3) Rec C Soil HSL for Vapour Intrusion, Silt																																										
>=0m, <1m																																										
>=1m, <2m																																										
>=2m, <4m																																										
>=4m																																										
Field ID	Location Code	Description	Sampled Date	Sample Depth (m)	Tokuthion	Alfopphos methyl	Basstar (Sulprofos)	Chlorfenvinphos	Chlorpyrifos	Chlorpyrifos-methyl	Coumaphos	Demeton-O	Demeton-S	Diazinon	Dichlorvos	Dimethoate	Disulfoton	Ethion	Ethoxyzip	Fenitrothion	Fensulfathion	Fenthion	EPN	Malathion	Mepiphos	Methyl parathion	Mevinphos (Phosdrin)	Monocrotophos	Naled (Dibrom)	Omethoate	Parathion	Phorate	Prinphos-methyl	Pyrazophos	Quinal	Terbufos	Trichloronate	Tetrachlorinphos				
<b>Arcadis (2017a), Additional Environmental Assessment</b>																																										
TP4	2017_ARC_TP4	-	10-Jan-17	1	-	-	-	-	-	-	-	-	-	-	-	-	-	-	-	-	-	-	-	-	-	-	-	-	-	-	-	-	-	-	-	-	-	-	-	-		
TP4	2017_ARC_TP4	-	10-Jan-17	2.5	-	<0.1	-	-	<0.1	<0.1	-	-	-	<0.1	<0.1	<0.1	-	<0.1	-	<0.1	-	-	-	<0.1	-	-	-	-	-	-	-	<0.1	-	-	-	-	<0.1	-	-	-		
TP5	2017_ARC_TP5	-	10-Jan-17	0.5	-	-	-	-	-	-	-	-	-	-	-	-	-	-	-	-	-	-	-	-	-	-	-	-	-	-	-	-	-	-	-	-	-	-	-	-		
TP6	2017_ARC_TP6	-	10-Jan-17	1	-	-	-	-	-	-	-	-	-	-	-	-	-	-	-	-	-	-	-	-	-	-	-	-	-	-	-	-	-	-	-	-	-	-	-	-		
TP7	2017_ARC_TP7	-	10-Jan-17	0.5	-	-	-	-	-	-	-	-	-	-	-	-	-	-	-	-	-	-	-	-	-	-	-	-	-	-	-	-	-	-	-	-	-	-	-	-		
TP8	2017_ARC_TP8	-	10-Jan-17	1	-	-	-	-	-	-	-	-	-	-	-	-	-	-	-	-	-	-	-	-	-	-	-	-	-	-	-	-	-	-	-	-	-	-	-	-		
TP12	2017_ARC_TP12	-	10-Jan-17	1	-	-	-	-	-	-	-	-	-	-	-	-	-	-	-	-	-	-	-	-	-	-	-	-	-	-	-	-	-	-	-	-	-	-	-	-		
TP16	2017_ARC_TP16	-	11-Jan-17	0.5	-	<0.1	-	-	<0.1	<0.1	-	-	-	<0.1	<0.1	<0.1	-	<0.1	-	<0.1	-	-	-	<0.1	-	-	-	-	-	-	-	<0.1	-	-	-	-	<0.1	-	-	-		
TP16	2017_ARC_TP16	-	11-Jan-17	1	-	-	-	-	-	-	-	-	-	-	-	-	-	-	-	-	-	-	-	-	-	-	-	-	-	-	-	-	-	-	-	-	-	-	-	-		
TP19	2017_ARC_TP19	-	11-Jan-17	0.5	-	-	-	-	-	-	-	-	-	-	-	-	-	-	-	-	-	-	-	-	-	-	-	-	-	-	-	-	-	-	-	-	-	-	-	-		
TP19	2017_ARC_TP19	-	11-Jan-17	1	-	<0.1	-	-	<0.1	<0.1	-	-	-	<0.1	<0.1	<0.1	-	<0.1	-	<0.1	-	-	-	<0.1	-	-	-	-	-	-	-	<0.1	-	-	-	-	<0.1	-	-	-		
TP20	2017_ARC_TP20	-	11-Jan-17	1	-	-	-	-	-	-	-	-	-	-	-	-	-	-	-	-	-	-	-	-	-	-	-	-	-	-	-	-	-	-	-	-	-	-	-	-		
TP31	2017_ARC_TP31	-	12-Jan-17	1	-	<0.1	-	-	<0.1	<0.1	-	-	-	<0.1	<0.1	<0.1	-	<0.1	-	<0.1	-	-	-	<0.1	-	-	-	-	-	-	-	<0.1	-	-	-	-	<0.1	-	-	-	-	
TP32	2017_ARC_TP32	-	12-Jan-17	1	-	-	-	-	-	-	-	-	-	-	-	-	-	-	-	-	-	-	-	-	-	-	-	-	-	-	-	-	-	-	-	-	-	-	-	-		
TP22	2017_ARC_TP22	-	11-Jan-17	1	-	-	-	-	-	-	-	-	-	-	-	-	-	-	-	-	-	-	-	-	-	-	-	-	-	-	-	-	-	-	-	-	-	-	-	-		
TP22	2017_ARC_TP22	-	11-Jan-17	2.5	-	<0.1	-	-	<0.1	<0.1	-	-	-	<0.1	<0.1	<0.1	-	<0.1	-	<0.1	-	-	-	<0.1	-	-	-	-	-	-	-	<0.1	-	-	-	-	<0.1	-	-	-	-	
TP23	2017_ARC_TP23	-	11-Jan-17	0.5	-	-	-	-	-	-	-	-	-	-	-	-	-	-	-	-	-	-	-	-	-	-	-	-	-	-	-	-	-	-	-	-	-	-	-	-		
TP24	2017_ARC_TP24	-	11-Jan-17	1	-	-	-	-	-	-	-	-	-	-	-	-	-	-	-	-	-	-	-	-	-	-	-	-	-	-	-	-	-	-	-	-	-	-	-	-	-	
TP25	2017_ARC_TP25	-	11-Jan-17	0.5	-	-	-	-	-	-	-	-	-	-	-	-	-	-	-	-	-	-	-	-	-	-	-	-	-	-	-	-	-	-	-	-	-	-	-	-	-	
TP25	2017_ARC_TP25	-	11-Jan-17	1	-	<0.1	-	-	<0.1	<0.1	-	-	-	<0.1	<0.1	<0.1	-	<0.1	-	<0.1	-	-	-	<0.1	-	-	-	-	-	-	-	<0.1	-	-	-	-	<0.1	-	-	-	-	
TP26	2017_ARC_TP26	-	11-Jan-17	0.5	-	-	-	-	-	-	-	-	-	-	-	-	-	-	-	-	-	-	-	-	-	-	-	-	-	-	-	-	-	-	-	-	-	-	-	-	-	
TP27	2017_ARC_TP27	-	11-Jan-17	0.5	-	-	-	-	-	-	-	-	-	-	-	-	-	-	-	-	-	-	-	-	-	-	-	-	-	-	-	-	-	-	-	-	-	-	-	-	-	
TP28	2017_ARC_TP28	-	11-Jan-17	0.5	-	-	-	-	-	-	-	-	-	-	-	-	-	-	-	-	-	-	-	-	-	-	-	-	-	-	-	-	-	-	-	-	-	-	-	-	-	
TP28	2017_ARC_TP28	-	11-Jan-17	4	-	<0.1	-	-	<0.1	<0.1	-	-	-	<0.1	<0.1	<0.1	-	<0.1	-	<0.1	-	-	-	<0.1	-	-	-	-	-	-	-	<0.1	-	-	-	-	<0.1	-	-	-	-	
TP30	2017_ARC_TP30	-	12-Jan-17	1	-	-	-	-	-	-	-	-	-	-	-	-	-	-	-	-	-	-	-	-	-	-	-	-	-	-	-	-	-	-	-	-	-	-	-	-	-	
TP33	2017_ARC_TP33	-	12-Jan-17	0.5	-	-	-	-	-	-	-	-	-	-	-	-	-	-	-	-	-	-	-	-	-	-	-	-	-	-	-	-	-	-	-	-	-	-	-	-	-	
SED D112	2017_ARC_SED D112	-	13-Jan-17	Sediment	-	-	-	-	-	-	-	-	-	-	-	-	-	-	-	-	-	-	-	-	-	-	-	-	-	-	-	-	-	-	-	-	-	-	-	-	-	
SED D113	2017_ARC_SED D113	-	13-Jan-17	Sediment	-	-	-	-	-	-	-	-	-	-	-	-	-	-	-	-	-	-	-	-	-	-	-	-	-	-	-	-	-	-	-	-	-	-	-	-	-	
SED D211	2017_ARC_SED D211	-	13-Jan-17	Sediment	-	-	-	-	-	-	-	-	-	-	-	-	-	-	-	-	-	-	-	-	-	-	-	-	-	-	-	-	-	-	-	-	-	-	-	-	-	
SED D212	2017_ARC_SED D212	-	13-Jan-17	Sediment	-	-	-	-	-	-	-	-	-	-	-	-	-	-	-	-	-	-	-	-	-	-	-	-	-	-	-	-	-	-	-	-	-	-	-	-	-	
SED D213	2017_ARC_SED D213	-	13-Jan-17	Sediment	-	-	-	-	-	-	-	-	-	-	-	-	-	-	-	-	-	-	-	-	-	-	-	-	-	-	-	-	-	-	-	-	-	-	-	-	-	
<b>Arcadis (2018), Additional Environmental Assessment - Production Area</b>																																										
ABH5	2018_ARC_ABH5	-	28-Nov-17	0.2	-	-	-	-	-	-	-	-	-	-	-	-	-	-	-	-	-	-	-	-	-	-	-	-	-	-	-	-	-	-	-	-	-	-	-	-	-	-
ABH5	2018_ARC_ABH5	-	28-Nov-17	1	-	-	-	-	-	-	-	-	-	-	-	-	-	-	-	-	-	-	-	-	-	-	-	-	-	-	-	-	-	-	-	-	-	-	-	-	-	-
ABH5	2018_ARC_ABH5	-	28-Nov-17	2	-	-	-	-	-	-	-	-	-	-	-	-	-	-	-	-	-	-	-	-	-	-	-	-	-	-	-	-	-	-	-	-	-	-	-	-	-	-
ABH6	2018_ARC_ABH6	-	28-Nov-17	0.5	-	-	-	-	-	-	-	-	-	-	-	-	-	-	-	-	-	-	-	-	-	-	-	-	-	-	-	-	-	-	-	-	-	-	-	-	-	-
ABH6	2018_ARC_ABH6	-	28-Nov-17	1.5	-	-	-	-	-	-	-	-	-	-	-	-	-	-	-	-	-	-	-	-	-	-	-	-	-	-	-	-	-	-	-	-	-	-	-	-	-	-
ABH6	2018_ARC_ABH6	-	28-Nov-17	4.5	-	-	-	-	-	-	-	-	-	-	-	-	-	-	-	-	-	-	-	-	-	-	-	-	-	-	-	-	-	-	-	-	-	-	-	-	-	-
<b>Arcadis (2018), Flue, Stack and Powerhouse Assessment</b>																																										
SS1	2018_ARC_S51	SS1	19-Feb-18	-	-	-	-	-	-	-	-	-	-	-	-	-	-	-	-	-	-	-	-	-	-	-	-	-	-	-	-	-	-	-	-	-	-	-	-	-	-	-
SS5	2018_ARC_S55	SS5	19-Feb-18	-	-	-	-	-	-	-	-	-	-	-	-	-	-	-	-	-	-	-	-	-	-	-	-	-	-	-	-	-	-	-	-	-	-	-	-	-	-	-

Table 3 - Historical Soil Results, Public Open Space Land Use Sample Locations

					Organophosphorous Pesticides																																									
					Dokuthion	Alifophos methyl	Boqstar (Sulprofos)	Chlorfeniphos	Chlorpyrifos	Chlorpyrifos-methyl	Coumaphos	Demeton-O	Demeton-S	Disalinn	Dichlorvos	Dimethoate	Disulfoton	Ethion	Ethio-prop	Fenitrothion	Fenitrothion	Fenitrothion	EPN	Malathion	Merphos	Methyl parathion	Mevinphos (Phosdrin)	Monocrotophos	Naled (Dibrom)	Omethoate	Parathion	Phorate	Phosphor-methyl	Pyrazophos	Quinal	Terbufos	Trichloronate	Tetrachlorophos								
					mg/kg	mg/kg	mg/kg	mg/kg	mg/kg	mg/kg	mg/kg	mg/kg	mg/kg	mg/kg	mg/kg	mg/kg	mg/kg	mg/kg	mg/kg	mg/kg	mg/kg	mg/kg	mg/kg	mg/kg	mg/kg	mg/kg	mg/kg	mg/kg	mg/kg	mg/kg	mg/kg	mg/kg	mg/kg	mg/kg	mg/kg	mg/kg	mg/kg	mg/kg	mg/kg							
EQL					0.2	0.1	0.2	0.2	0.1	0.1	2	0.2	0.2	0.1	0.1	0.1	0.2	0.1	0.2	0.1	0.2	0.2	0.2	0.1	0.2	0.2	0.2	2	0.2	2	0.1	0.2	0.2	0.2	0.2	0.1	0.2	0.2	0.2	0.2						
NEPM 2013 Table 1A(1) HILs Recreational C Soil									250																																					
NEPM 2013 Table 7 HSLs for Asbestos in Soil - Residential C Soil																																														
NEPM 2013 Table 1B(1-4) Generic & Site Specific EIL - Urban Res & Public Open Space*																																														
NEPM 2013 Table 1B(6) ESIs for Urban Res, Coarse Soil >=0m, <2m																																														
NEPM 2013 Table 1B(6) ESIs for Urban Res, Fine Soil >=0m, <2m																																														
NEPM 2013 Table 1B(7) Management Limits in Res / Parkland, Coarse Soil																																														
NEPM 2013 Table 1B(7) Management Limits in Res / Parkland, Fine Soil																																														
ANZG 2018 DGV Toxicant values for Sediments (Table 1)																																														
NEPM 2013 Table 1A(3) Rec C Soil HSL for Vapour Intrusion, Clay																																														
>=0m, <1m																																														
>=1m, <2m																																														
>=2m, <4m																																														
>=4m																																														
NEPM 2013 Table 1A(3) Rec C Soil HSL for Vapour Intrusion, Sand																																														
>=0m, <1m																																														
>=1m, <2m																																														
>=2m, <4m																																														
>=4m																																														
NEPM 2013 Table 1A(3) Rec C Soil HSL for Vapour Intrusion, Silt																																														
>=0m, <1m																																														
>=1m, <2m																																														
>=2m, <4m																																														
>=4m																																														

\*Generic & site-specific EIL values adopted from Arcadis (2019) RAP Appendix C, Table 2.  
\*\*Chromium III+IV HIL values adopted from Arcadis (2019) RAP Appendix C, Table 6.

**Comments**  
 ND - No asbestos detected at the laboratory limit of reporting (0.1 g/kg)  
 #1 Carcinogenic PAHs: HIL based on 8 carc. PAHs & their TEFs (rel to BaP ref Schedule 7) BaP TEQ Half calc by multiplying the conc of each carc. PAH in sample by its BaP TEF ( refer Shedule B7).  
 #2 Arsenic: HIL assumes 70% oral bioavailability. Site-specific bioavailability may be important and should be considered where appropriate (refer Shedule B7).  
 #3 Lead: HILs A,B,C based on blood lead models (IEUBK & HIL D on adult lead model for where 50% bioavailability considered). Site-specific bioavailability should be considered wh  
 #4 Elemental mercury: HIL does not address elemental mercury. a site specific assessment should be considered if elemental mercury is present, or suspected to be present.  
 #5 PCBs: HIL refers to non-dioxin like PCBs only. Where PCB source is known, or suspected at a site, a site-specific assessment of exposure to all PCBs (no dioxin like PCBs) shou  
 #6 Aged values apply to arsenic contamination present in soil > 2 years. Refer Schedule B5c for < 2 years.  
 #7 To obtain F1 subtract the sum of BTEX concentrations from the C6 - C10 fraction.  
 #8 ERRATA Updated 30 April 2014. Naphthalene should not be subtracted.  
 #9 Errata 30 April 2014. Naphthalene should not be subtracted from >C  
 #10 Moderate reliability. To obtain F1 subtract the sum of BTEX concentrations from the C6 - C10 fraction.  
 #11 Separate management limits for BTEX & naphthalene are not available hence should not be subtracted from the relevant fractions to obtain F1 & F2  
 #12 To obtain F2 subtract naphthalene from the >C10 - C16 fraction.  
 NL - Derived soil HSL exceeds soil saturation concentration, non-limiting

Table 3 - Historical Soil Results, Public Open Space Land Use Sample Locations

	Polychlorinated Biphenyls								Halogenated Benzenes	
	monophos-ethyl	koehler 1016	koehler 121	koehler 122	koehler 124	koehler 128	koehler 1254	koehler 1260	PCBs (sum of total)	hexachlorobenzene
	mg/kg	mg/kg	mg/kg	mg/kg	mg/kg	mg/kg	mg/kg	mg/kg	mg/kg	mg/kg
EQL	0.1	0.1	0.1	0.1	0.1	0.1	0.1	0.1	0.1	0.1
NEPM 2013 Table 1A(1) Hills Recreational C Soil									1 <sup>95</sup>	10
NEPM 2013 Table 7 HSLs for Asbestos in Soil - Residential C Soil										
NEPM 2013 Table 1B(1-4) Generic & Site Specific EIL - Urban Res & Public Open Space*										
NEPM 2013 Table 1B(6) ESIs for Urban Res, Coarse Soil >=0m, <2m										
NEPM 2013 Table 1B(6) ESIs for Urban Res, Fine Soil >=0m, <2m										
NEPM 2013 Table 1B(7) Management Limits in Res / Parkland, Coarse Soil										
NEPM 2013 Table 1B(7) Management Limits in Res / Parkland, Fine Soil										
ANZG 2018 DGV Toxicant values for Sediments (Table 1)									0.034	
NEPM 2013 Table 1A(3) Rec C Soil HSL for Vapour Intrusion, Clay										
>=0m, <1m										
>=1m, <2m										
>=2m, <4m										
>=4m										
NEPM 2013 Table 1A(3) Rec C Soil HSL for Vapour Intrusion, Sand										
>=0m, <1m										
>=1m, <2m										
>=2m, <4m										
>=4m										
NEPM 2013 Table 1A(3) Rec C Soil HSL for Vapour Intrusion, Silt										
>=0m, <1m										
>=1m, <2m										
>=2m, <4m										
>=4m										
Field ID	Location Code	Description	Sampled Date	Sample Depth (m)						
ADI Limited (1996), Stage 1 Site Investigation Report										
P28	1996_ADI_P28	-	ADI February 1996	0.9	-	-	-	-	-	-
P29	1996_ADI_P29	-	ADI February 1996	0.15	-	-	-	-	-	-
W3	1996_ADI_W3	-	ADI February 1996	0.5	-	-	-	-	-	-
W3	1996_ADI_W3	-	ADI February 1996	0.6	-	-	-	-	-	-
W3	1996_ADI_W3	-	ADI February 1996	2.6	-	-	-	-	-	-
W4	1996_ADI_W4	-	ADI February 1996	0.4	-	-	-	-	-	-
W4	1996_ADI_W4	-	ADI February 1996	1.6	-	-	-	-	-	-
W4	1996_ADI_W4	-	ADI February 1996	4	-	-	-	-	-	-
W5	1996_ADI_W5	-	ADI February 1996	0.1	-	-	-	-	-	-
W13	1996_ADI_W13	-	ADI February 1996	Stockpile	-	-	-	-	-	-
W14	1996_ADI_W14	-	ADI February 1996	Stockpile	-	-	-	-	-	-
S6	1996_ADI_S6	-	ADI February 1996	0.2	-	-	-	-	-	-
S6	1996_ADI_S6	-	ADI February 1996	0.8	-	-	-	-	-	-
S6	1996_ADI_S6	-	ADI February 1996	3	-	-	-	-	-	-
S8	1996_ADI_S8	-	ADI February 1996	0.1	-	-	-	-	-	-
S8	1996_ADI_S8	-	ADI February 1996	0.95	-	-	-	-	-	-
S32	1996_ADI_S32	-	ADI February 1996	0.4	-	-	-	-	-	-
S32	1996_ADI_S32	-	ADI February 1996	1	-	-	-	-	-	-
S32	1996_ADI_S32	-	ADI February 1996	1.7	-	-	-	-	-	-
S34	1996_ADI_S34	-	ADI February 1996	1.55	-	-	-	-	-	-
S37	1996_ADI_S37	-	ADI February 1996	3.4	-	-	-	-	-	-
BH3	1996_ADI_BH3	-	ADI February 1996	1.25	-	-	-	-	-	-
BH4	1996_ADI_BH4	-	ADI February 1996	0.4	-	-	-	-	-	-
BH4	1996_ADI_BH4	-	ADI February 1996	1.7	-	-	-	-	-	-
BH6	1996_ADI_BH6	-	ADI February 1996	0.6	-	-	-	-	-	-
BH6	1996_ADI_BH6	-	ADI February 1996	2	-	-	-	-	-	-
O21	1996_ADI_O21	-	ADI February 1996	0.4	-	-	-	-	-	-
O21	1996_ADI_O21	-	ADI February 1996	1.1	-	-	-	-	-	-
O22	1996_ADI_O22	-	ADI February 1996	0.7	-	-	-	-	-	-
O22	1996_ADI_O22	-	ADI February 1996	0.2	-	-	-	-	-	-
O23	1996_ADI_O23	-	ADI February 1996	0.2	-	-	-	-	-	-
O24	1996_ADI_O24	-	ADI February 1996	0.2	-	-	-	-	-	-
O24	1996_ADI_O24	-	ADI February 1996	0.8	-	-	-	-	-	-
O40	1996_ADI_O40	-	ADI February 1996	0.7	-	-	-	-	-	-
O41	1996_ADI_O41	-	ADI February 1996	0.4	-	-	-	-	-	-
O42	1996_ADI_O42	-	ADI February 1996	0.1	-	-	-	-	-	-
O43	1996_ADI_O43	-	ADI February 1996	0.3	-	-	-	-	-	-
O44	1996_ADI_O44	-	ADI February 1996	1.5	-	-	-	-	-	-
BH2	1996_ADI_BH2	-	ADI February 1996	0.3	-	-	-	-	-	-
BH2	1996_ADI_BH2	-	ADI February 1996	3.3	-	-	-	-	-	-
BH2	1996_ADI_BH2	-	ADI February 1996	7.3	-	-	-	-	-	-
B19	1996_ADI_B19	-	ADI February 1996	1.5	-	-	-	-	-	-
B20	1996_ADI_B20	-	ADI February 1996	1.5	-	-	-	-	-	-
B33	1996_ADI_B33	-	ADI February 1996	1	-	-	-	-	-	-
B47	1996_ADI_B47	-	ADI February 1996	1.2	-	-	-	-	-	-

Table 3 - Historical Soil Results, Public Open Space Land Use Sample Locations

	Polychlorinated Biphenyls									Halogenated Benzenes
	monophos-ethyl	koehler 1016	koehler 1121	koehler 1132	koehler 1242	koehler 1248	koehler 1254	koehler 1260	PCBs (sum of total)	hexachlorobenzene
	mg/kg	mg/kg	mg/kg	mg/kg	mg/kg	mg/kg	mg/kg	mg/kg	mg/kg	mg/kg
EQL	0.1	0.1	0.1	0.1	0.1	0.1	0.1	0.1	0.1	0.1
NEPM 2013 Table 1A(1) HILs Recreational C Soil									1 <sup>ns</sup>	10
NEPM 2013 Table 7 HSLs for Asbestos in Soil - Residential C Soil										
NEPM 2013 Table 1B(1-4) Generic & Site Specific EIL - Urban Res & Public Open Space*										
NEPM 2013 Table 1B(6) ESIs for Urban Res, Coarse Soil >=0m, <2m										
NEPM 2013 Table 1B(6) ESIs for Urban Res, Fine Soil >=0m, <2m										
NEPM 2013 Table 1B(7) Management Limits in Res / Parkland, Coarse Soil										
NEPM 2013 Table 1B(7) Management Limits in Res / Parkland, Fine Soil										
ANZG 2018 DGV Toxicant values for Sediments (Table 1)									0.034	
NEPM 2013 Table 1A(3) Rec C Soil HSL for Vapour Intrusion, Clay										
>=0m, <1m										
>=1m, <2m										
>=2m, <4m										
>=4m										
NEPM 2013 Table 1A(3) Rec C Soil HSL for Vapour Intrusion, Sand										
>=0m, <1m										
>=1m, <2m										
>=2m, <4m										
>=4m										
NEPM 2013 Table 1A(3) Rec C Soil HSL for Vapour Intrusion, Silt										
>=0m, <1m										
>=1m, <2m										
>=2m, <4m										
>=4m										
Field ID	Location Code	Description	Sampled Date	Sample Depth (m)						
EnviroRisk (2006), Phase 2 Environmental (Site Contamination) Assessment										
BH3	2006_ENVR_BH3	Grid Pattern Samples	EnviroRisk Dec 2005	0.1	-	-	-	-	-	-
BH3	2006_ENVR_BH3	Grid Pattern Samples	EnviroRisk Dec 2005	0.5	-	-	-	-	-	-
BH3	2006_ENVR_BH3	Grid Pattern Samples	EnviroRisk Dec 2005	1.2	-	-	-	-	-	-
BH6	2006_ENVR_BH6	Grid Pattern Samples	EnviroRisk Dec 2005	0.1	-	-	-	-	-	-
BH6	2006_ENVR_BH6	Grid Pattern Samples	EnviroRisk Dec 2005	1	-	-	-	-	-	-
BH6	2006_ENVR_BH6	Grid Pattern Samples	EnviroRisk Dec 2005	2	-	-	-	-	-	-
BH9	2006_ENVR_BH9	Grid Pattern Samples	EnviroRisk Dec 2005	0.1	-	-	-	-	-	-
BH9	2006_ENVR_BH9	Grid Pattern Samples	EnviroRisk Dec 2005	0.5	-	-	-	-	-	-
BH9	2006_ENVR_BH9	Grid Pattern Samples	EnviroRisk Dec 2005	4.4	-	-	-	-	-	-
BH10	2006_ENVR_BH10	Grid Pattern Samples	EnviroRisk Dec 2005	1	-	-	-	-	-	-
BH10	2006_ENVR_BH10	Grid Pattern Samples	EnviroRisk Dec 2005	4.2	-	-	-	-	-	-
BH10	2006_ENVR_BH10	Grid Pattern Samples	EnviroRisk Dec 2005	4.8	-	-	-	-	-	-
BH11	2006_ENVR_BH11	Grid Pattern Samples	EnviroRisk Dec 2005	0.1	-	-	-	-	-	-
BH11	2006_ENVR_BH11	Grid Pattern Samples	EnviroRisk Dec 2005	0.5	-	-	-	-	-	-
BH11	2006_ENVR_BH11	Grid Pattern Samples	EnviroRisk Dec 2005	2	-	-	-	-	-	-
BH12	2006_ENVR_BH12	Grid Pattern Samples	EnviroRisk Dec 2005	0.1	-	-	-	-	-	-
BH12	2006_ENVR_BH12	Grid Pattern Samples	EnviroRisk Dec 2005	1	-	-	-	-	-	-
BH12	2006_ENVR_BH12	Grid Pattern Samples	EnviroRisk Dec 2005	2.5	-	-	-	-	-	-
BH17	2006_ENVR_BH17	Judgemental Samples	EnviroRisk Dec 2005	0.5	-	-	-	-	-	-
BH17	2006_ENVR_BH17	Judgemental Samples	EnviroRisk Dec 2005	2	-	-	-	-	-	-
BH17	2006_ENVR_BH17	Judgemental Samples	EnviroRisk Dec 2005	4	-	-	-	-	-	-
BH19	2006_ENVR_BH19	Judgemental Samples	EnviroRisk Dec 2005	1	-	-	-	-	-	-
BH19	2006_ENVR_BH19	Judgemental Samples	EnviroRisk Dec 2005	2	-	-	-	-	-	-
BH19	2006_ENVR_BH19	Judgemental Samples	EnviroRisk Dec 2005	4	-	-	-	-	-	-
BH20	2006_ENVR_BH20	Judgemental Samples	EnviroRisk Dec 2005	0.5	-	-	-	-	-	-
BH20	2006_ENVR_BH20	Judgemental Samples	EnviroRisk Dec 2005	1	-	-	-	-	-	-
BH22	2006_ENVR_BH22	Judgemental Samples	EnviroRisk Dec 2005	0.1	-	-	-	-	-	-
BH22	2006_ENVR_BH22	Judgemental Samples	EnviroRisk Dec 2005	0.5	-	-	-	-	-	-
BH22	2006_ENVR_BH22	Judgemental Samples	EnviroRisk Dec 2005	1	-	-	-	-	-	-
BH23	2006_ENVR_BH23	Judgemental Samples	EnviroRisk Dec 2005	0.5	-	-	-	-	-	-
BH23	2006_ENVR_BH23	Judgemental Samples	EnviroRisk Dec 2005	1	-	-	-	-	-	-
BH24	2006_ENVR_BH24	Judgemental Samples	EnviroRisk Dec 2005	0.5	-	-	-	-	-	-
BH24	2006_ENVR_BH24	Judgemental Samples	EnviroRisk Dec 2005	1	-	-	-	-	-	-
BH26	2006_ENVR_BH26	Judgemental Samples	EnviroRisk Dec 2005	0.2	-	-	-	-	-	-
BH26	2006_ENVR_BH26	Judgemental Samples	EnviroRisk Dec 2005	0.5	-	-	-	-	-	-
BH26	2006_ENVR_BH26	Judgemental Samples	EnviroRisk Dec 2005	1	-	-	-	-	-	-
BH27	2006_ENVR_BH27	Judgemental Samples	EnviroRisk Dec 2005	0.1	-	-	-	-	-	-
BH27	2006_ENVR_BH27	Judgemental Samples	EnviroRisk Dec 2005	0.5	-	-	-	-	-	-
BH27	2006_ENVR_BH27	Judgemental Samples	EnviroRisk Dec 2005	1	-	-	-	-	-	-
BH28	2006_ENVR_BH28	Judgemental Samples	EnviroRisk Dec 2005	0.1	-	-	-	-	-	-
BH28	2006_ENVR_BH28	Judgemental Samples	EnviroRisk Dec 2005	0.5	-	-	-	-	-	-
BH28	2006_ENVR_BH28	Judgemental Samples	EnviroRisk Dec 2005	1	-	-	-	-	-	-
BH29	2006_ENVR_BH29	Judgemental Samples	EnviroRisk Dec 2005	0.1	-	-	-	-	-	-
BH29	2006_ENVR_BH29	Judgemental Samples	EnviroRisk Dec 2005	0.5	-	-	-	-	-	-
BH29	2006_ENVR_BH29	Judgemental Samples	EnviroRisk Dec 2005	1	-	-	-	-	-	-
BH30	2006_ENVR_BH30	Judgemental Samples	EnviroRisk Dec 2005	0.1	-	-	-	-	-	-
BH30	2006_ENVR_BH30	Judgemental Samples	EnviroRisk Dec 2005	0.5	-	-	-	-	-	-
BH31	2006_ENVR_BH31	Judgemental Samples	EnviroRisk Dec 2005	0.1	-	-	-	-	-	-
BH31	2006_ENVR_BH31	Judgemental Samples	EnviroRisk Dec 2005	0.5	-	-	-	-	-	-
BH32	2006_ENVR_BH32	Judgemental Samples	EnviroRisk Dec 2005	0.1	-	-	-	-	-	-
BH33	2006_ENVR_BH33	Judgemental Samples	EnviroRisk Dec 2005	0.1	-	-	-	-	-	-
RB1	2006_ENVR_RB1	Judgemental Samples	EnviroRisk Dec 2005	0.1	-	-	-	-	-	-
RB1	2006_ENVR_RB1	Judgemental Samples	EnviroRisk Dec 2005	0.25	-	-	-	-	-	-
RB2	2006_ENVR_RB2	Judgemental Samples	EnviroRisk Dec 2005	0.1	-	-	-	-	-	-
BW1	2006_ENVR_BW1	Soil Analytical Data (Bund Walls)	EnviroRisk Dec 2005	-	-	-	-	-	-	-
BW2	2006_ENVR_BW2	Soil Analytical Data (Bund Walls)	EnviroRisk Dec 2005	-	-	-	-	-	-	-
BW3	2006_ENVR_BW3	Soil Analytical Data (Bund Walls)	EnviroRisk Dec 2005	-	-	-	-	-	-	-
BW4	2006_ENVR_BW4	Soil Analytical Data (Bund Walls)	EnviroRisk Dec 2005	-	-	-	-	-	-	-
BW5	2006_ENVR_BW5	Soil Analytical Data (Bund Walls)	EnviroRisk Dec 2005	-	-	-	-	-	-	-
BW6	2006_ENVR_BW6	Soil Analytical Data (Bund Walls)	EnviroRisk Dec 2005	-	-	-	-	-	-	-
SED 1	2006_ENVR_SED 1	Soil Analytical Data (Sediments)	21-Dec-05	-	-	-	-	-	-	-
SED 2	2006_ENVR_SED 2	Soil Analytical Data (Sediments)	21-Dec-05	-	-	-	-	-	-	-
SED 3	2006_ENVR_SED 3	Soil Analytical Data (Sediments)	21-Dec-05	-	-	-	-	-	-	-

Table 3 - Historical Soil Results, Public Open Space Land Use Sample Locations

	Polychlorinated Biphenyls								Halogenated Benzenes	
	Monophos-ethyl	Koehler 1016	Koehler 121	Koehler 122	Koehler 124	Koehler 128	Koehler 1254	Koehler 1260	PCBs (Sum of total)	Hexachlorobenzene
	mg/kg	mg/kg	mg/kg	mg/kg	mg/kg	mg/kg	mg/kg	mg/kg	mg/kg	mg/kg
EQL	0.1	0.1	0.1	0.1	0.1	0.1	0.1	0.1	0.1	0.1
NEPM 2013 Table 1A(1) Hills Recreational C Soil									1 <sup>95</sup>	10
NEPM 2013 Table 7 HSLs for Asbestos in Soil - Residential C Soil										
NEPM 2013 Table 1B(1-4) Generic & Site Specific EIL - Urban Res & Public Open Space*										
NEPM 2013 Table 1B(6) ESIs for Urban Res, Coarse Soil >=0m, <2m										
NEPM 2013 Table 1B(6) ESIs for Urban Res, Fine Soil >=0m, <2m										
NEPM 2013 Table 1B(7) Management Limits in Res / Parkland, Coarse Soil										
NEPM 2013 Table 1B(7) Management Limits in Res / Parkland, Fine Soil										
ANZG 2018 DGV Toxicant values for Sediments (Table 1)									0.034	
NEPM 2013 Table 1A(3) Rec C Soil HSL for Vapour Intrusion, Clay										
>=0m, <1m										
>=1m, <2m										
>=2m, <4m										
>=4m										
NEPM 2013 Table 1A(3) Rec C Soil HSL for Vapour Intrusion, Sand										
>=0m, <1m										
>=1m, <2m										
>=2m, <4m										
>=4m										
NEPM 2013 Table 1A(3) Rec C Soil HSL for Vapour Intrusion, Silt										
>=0m, <1m										
>=1m, <2m										
>=2m, <4m										
>=4m										

Field ID	Location Code	Description	Sampled Date	Sample Depth (m)																
Environmental Strategies (2014), Phase 2 Detailed Site Investigation																				
BH42	2014_ES_BH42	Area A	2014	0.2	-	-	-	-	-	-	-	-	-	-	-	-	-	-	-	-
BH42	2014_ES_BH42	Area A	2014	1	-	-	-	-	-	-	-	-	-	-	-	-	-	-	-	-
ES3	2014_ES_ES3	Area A	2014	0.25	-	-	-	-	-	-	-	-	-	-	-	-	-	-	-	-
ES3	2014_ES_ES3	Area A	2014	0.5	-	-	-	-	-	-	-	-	-	-	-	-	-	-	-	-
TP37	2014_ES_TP37	Area B	2014	0.85	-	-	-	-	-	-	-	-	-	-	-	-	-	-	-	-
TP37	2014_ES_TP37	Area B	2014	2.2	-	-	-	-	-	-	-	-	-	-	-	-	-	-	-	-
TP13	2014_ES_TP13	Area C	2014	0.2	-	-	-	-	-	-	-	-	-	-	-	-	-	-	-	-
TP13	2014_ES_TP13	Area C	2014	0.65	-	-	-	-	-	-	-	-	-	-	-	-	-	-	-	-
TP16	2014_ES_TP16	Area C	2014	0.45	-	-	-	-	-	-	-	-	-	-	-	-	-	-	-	-
TP17	2014_ES_TP17	Area C	2014	0.2	-	-	-	-	-	-	-	-	-	-	-	-	-	-	-	-
TP17	2014_ES_TP17	Area C	2014	1.4	-	-	-	-	-	-	-	-	-	-	-	-	-	-	-	-
TP18	2014_ES_TP18	Area C	2014	0.2	-	-	-	-	-	-	-	-	-	-	-	-	-	-	-	-
TP18	2014_ES_TP18	Area C	2014	1.25	-	-	-	-	-	-	-	-	-	-	-	-	-	-	-	-
TP19	2014_ES_TP19	Area C	2014	0.2	-	-	-	-	-	-	-	-	-	-	-	-	-	-	-	-
TP19	2014_ES_TP19	Area C	2014	0.7	-	-	-	-	-	-	-	-	-	-	-	-	-	-	-	-
TP20	2014_ES_TP20	Area C	2014	0.2	-	-	-	-	-	-	-	-	-	-	-	-	-	-	-	-
TP20	2014_ES_TP20	Area C	2014	1	-	-	-	-	-	-	-	-	-	-	-	-	-	-	-	-
TP29	2014_ES_TP29	Area C	2014	0.2	-	-	-	-	-	-	-	-	-	-	-	-	-	-	-	-
TP29	2014_ES_TP29	Area C	2014	1.6	-	-	-	-	-	-	-	-	-	-	-	-	-	-	-	-
TP30	2014_ES_TP30	Area C	2014	0.2	-	-	-	-	-	-	-	-	-	-	-	-	-	-	-	-
TP30	2014_ES_TP30	Area C	2014	1.1	-	-	-	-	-	-	-	-	-	-	-	-	-	-	-	-
TP35	2014_ES_TP35	Area C	2014	0.2	-	-	-	-	-	-	-	-	-	-	-	-	-	-	-	-
TP35	2014_ES_TP35	Area C	2014	2.2	-	-	-	-	-	-	-	-	-	-	-	-	-	-	-	-
TP36	2014_ES_TP36	Area C	2014	0.2	-	-	-	-	-	-	-	-	-	-	-	-	-	-	-	-
TP36	2014_ES_TP36	Area C	2014	3.5	-	-	-	-	-	-	-	-	-	-	-	-	-	-	-	-
TP03	2014_ES_TP03	Area D	2014	0.2	-	-	-	-	-	-	-	-	-	-	-	-	-	-	-	-
TP03	2014_ES_TP03	Area D	2014	1.6	-	-	-	-	-	-	-	-	-	-	-	-	-	-	-	-
TP04	2014_ES_TP04	Area D	2014	0.2	-	-	-	-	-	-	-	-	-	-	-	-	-	-	-	-
TP04	2014_ES_TP04	Area D	2014	2.25	-	-	-	-	-	-	-	-	-	-	-	-	-	-	-	-
TP05	2014_ES_TP05	Area D	2014	0.2	-	-	-	-	-	-	-	-	-	-	-	-	-	-	-	-
TP06	2014_ES_TP06	Area D	2014	0.2	-	-	-	-	-	-	-	-	-	-	-	-	-	-	-	-
TP09	2014_ES_TP09	Area D	2014	0.2	-	-	-	-	-	-	-	-	-	-	-	-	-	-	-	-
TP09	2014_ES_TP09	Area D	2014	1.1	-	-	-	-	-	-	-	-	-	-	-	-	-	-	-	-
TP10	2014_ES_TP10	Area D	2014	0.2	-	-	-	-	-	-	-	-	-	-	-	-	-	-	-	-
TP10	2014_ES_TP10	Area D	2014	1	-	-	-	-	-	-	-	-	-	-	-	-	-	-	-	-
TP11	2014_ES_TP11	Area D	2014	0.2	-	-	-	-	-	-	-	-	-	-	-	-	-	-	-	-
TP24	2014_ES_TP24	Area D	2014	0.2	-	-	-	-	-	-	-	-	-	-	-	-	-	-	-	-
TP25	2014_ES_TP25	Area D	2014	0.2	-	-	-	-	-	-	-	-	-	-	-	-	-	-	-	-
TP26	2014_ES_TP26	Area D	2014	0.2	-	-	-	-	-	-	-	-	-	-	-	-	-	-	-	-
TP27	2014_ES_TP27	Area D	2014	0.2	-	-	-	-	-	-	-	-	-	-	-	-	-	-	-	-
TP28	2014_ES_TP28	Area D	2014	0.2	-	-	-	-	-	-	-	-	-	-	-	-	-	-	-	-
SED1CR	2014_ES_SED1CR	Area E - Sediment Samples	02-Apr-14	0.2-0.4	-	-	-	-	-	-	-	-	-	-	-	-	-	-	-	-
SED2CR	2014_ES_SED2CR	Area E - Sediment Samples	02-Apr-14	0.2-0.4	-	-	-	-	-	-	-	-	-	-	-	-	-	-	-	-
SED3CR	2014_ES_SED3CR	Area E - Sediment Samples	02-Apr-14	0.2-0.4	-	-	-	-	-	-	-	-	-	-	-	-	-	-	-	-
SED7CR	2014_ES_SED7CR	Area E - Sediment Samples	02-Apr-14	0.2-0.4	-	-	-	-	-	-	-	-	-	-	-	-	-	-	-	-
SED8CR	2014_ES_SED8CR	Area E - Sediment Samples	04-Apr-14	0.2-0.4	-	-	-	-	-	-	-	-	-	-	-	-	-	-	-	-

Table 3 - Historical Soil Results, Public Open Space Land Use Sample Locations

	Polychlorinated Biphenyls									Halogenated Benzenes	
	Monophospho-ethyl	Koehler 1016	Koehler 1221	Koehler 1232	Koehler 1242	Koehler 1248	Koehler 1254	Koehler 1260	PCBs (Sum of total)	Hexachlorobenzene	
	mg/kg	mg/kg	mg/kg	mg/kg	mg/kg	mg/kg	mg/kg	mg/kg	mg/kg	mg/kg	
EQL	0.1	0.1	0.1	0.1	0.1	0.1	0.1	0.1	0.1	0.1	
NEPM 2013 Table 1A(1) Hills Recreational C Soil									1 <sup>95</sup>	10	
NEPM 2013 Table 7 HSLs for Asbestos in Soil - Residential C Soil											
NEPM 2013 Table 1B(1-4) Generic & Site Specific EIL - Urban Res & Public Open Space*											
NEPM 2013 Table 1B(6) ESIs for Urban Res, Coarse Soil >=0m, <2m											
NEPM 2013 Table 1B(6) ESIs for Urban Res, Fine Soil >=0m, <2m											
NEPM 2013 Table 1B(7) Management Limits in Res / Parkland, Coarse Soil											
NEPM 2013 Table 1B(7) Management Limits in Res / Parkland, Fine Soil											
ANZG 2018 DGV Toxicant values for Sediments (Table 1)									0.034		
NEPM 2013 Table 1A(3) Rec C Soil HSL for Vapour Intrusion, Clay											
>=0m, <1m											
>=1m, <2m											
>=2m, <4m											
>=4m											
NEPM 2013 Table 1A(3) Rec C Soil HSL for Vapour Intrusion, Sand											
>=0m, <1m											
>=1m, <2m											
>=2m, <4m											
>=4m											
NEPM 2013 Table 1A(3) Rec C Soil HSL for Vapour Intrusion, Silt											
>=0m, <1m											
>=1m, <2m											
>=2m, <4m											
>=4m											
Field ID	Location Code	Description	Sampled Date	Sample Depth (m)							
<b>Arcadis (2017a), Additional Environmental Assessment</b>											
TP4	2017_ARC_TP4	-	10-Jan-17	1	-	-	-	-	-	-	-
TP4	2017_ARC_TP4	-	10-Jan-17	2.5	<0.1	<0.1	<0.1	<0.1	<0.1	<0.1	<0.1
TP5	2017_ARC_TP5	-	10-Jan-17	0.5	-	-	-	-	-	-	-
TP6	2017_ARC_TP6	-	10-Jan-17	1	-	-	-	-	-	-	-
TP7	2017_ARC_TP7	-	10-Jan-17	0.5	-	-	-	-	-	-	-
TP8	2017_ARC_TP8	-	10-Jan-17	1	-	-	-	-	-	-	-
TP12	2017_ARC_TP12	-	10-Jan-17	1	-	-	-	-	-	-	-
TP16	2017_ARC_TP16	-	11-Jan-17	0.5	<0.1	<0.1	<0.1	<0.1	<0.1	<0.1	<0.1
TP16	2017_ARC_TP16	-	11-Jan-17	1	-	-	-	-	-	-	-
TP19	2017_ARC_TP19	-	11-Jan-17	0.5	-	-	-	-	-	-	-
TP19	2017_ARC_TP19	-	11-Jan-17	1	<0.1	<0.1	<0.1	<0.1	<0.1	<0.1	<0.1
TP20	2017_ARC_TP20	-	11-Jan-17	1	-	-	-	-	-	-	-
TP31	2017_ARC_TP31	-	12-Jan-17	1	<0.1	<0.1	<0.1	<0.1	<0.1	<0.1	<0.1
TP32	2017_ARC_TP32	-	12-Jan-17	1	-	-	-	-	-	-	-
TP22	2017_ARC_TP22	-	11-Jan-17	1	-	-	-	-	-	-	-
TP22	2017_ARC_TP22	-	11-Jan-17	2.5	<0.1	<0.1	<0.1	<0.1	<0.1	<0.1	<0.1
TP23	2017_ARC_TP23	-	11-Jan-17	0.5	-	-	-	-	-	-	-
TP24	2017_ARC_TP24	-	11-Jan-17	1	-	-	-	-	-	-	-
TP25	2017_ARC_TP25	-	11-Jan-17	0.5	-	-	-	-	-	-	-
TP25	2017_ARC_TP25	-	11-Jan-17	1	<0.1	<0.1	<0.1	<0.1	<0.1	<0.1	<0.1
TP26	2017_ARC_TP26	-	11-Jan-17	0.5	-	-	-	-	-	-	-
TP27	2017_ARC_TP27	-	11-Jan-17	0.5	-	-	-	-	-	-	-
TP28	2017_ARC_TP28	-	11-Jan-17	0.5	-	-	-	-	-	-	-
TP28	2017_ARC_TP28	-	11-Jan-17	4	<0.1	<0.1	<0.1	<0.1	<0.1	<0.1	<0.1
TP30	2017_ARC_TP30	-	12-Jan-17	1	-	-	-	-	-	-	-
TP33	2017_ARC_TP33	-	12-Jan-17	0.5	-	-	-	-	-	-	-
SED D112	2017_ARC_SED D112	-	13-Jan-17	Sediment	-	-	-	-	-	-	-
SED D113	2017_ARC_SED D113	-	13-Jan-17	Sediment	-	-	-	-	-	-	-
SED D211	2017_ARC_SED D211	-	13-Jan-17	Sediment	-	-	-	-	-	-	-
SED D212	2017_ARC_SED D212	-	13-Jan-17	Sediment	-	-	-	-	-	-	-
SED D213	2017_ARC_SED D213	-	13-Jan-17	Sediment	-	-	-	-	-	-	-
<b>Arcadis (2018), Additional Environmental Assessment - Production Area</b>											
ABH5	2018_ARC_ABH5	-	28-Nov-17	0.2	-	-	-	-	-	-	-
ABH5	2018_ARC_ABH5	-	28-Nov-17	1	-	-	-	-	-	-	-
ABH5	2018_ARC_ABH5	-	28-Nov-17	2	-	-	-	-	-	-	-
ABH6	2018_ARC_ABH6	-	28-Nov-17	0.5	-	-	-	-	-	-	-
ABH6	2018_ARC_ABH6	-	28-Nov-17	1.5	-	-	-	-	-	-	-
ABH6	2018_ARC_ABH6	-	28-Nov-17	4.5	-	-	-	-	-	-	-
<b>Arcadis (2018), Flue, Stack and Powerhouse Assessment</b>											
SS1	2018_ARC_S51	SS1	19-Feb-18	-	-	-	-	-	-	-	-
SS5	2018_ARC_S55	SS5	19-Feb-18	-	-	-	-	-	-	-	-

Table 3 - Historical Soil Results, Public Open Space Land Use Sample Locations

	Polychlorinated Biphenyls								Halogenated Benzenes	
	Monophos-ethyl	Kochlor 1016	Kochlor 121	Kochlor 122	Kochlor 142	Kochlor 148	Kochlor 154	Kochlor 160	PCBs (Sum of total)	Hexachlorobenzene
	mg/kg	mg/kg	mg/kg	mg/kg	mg/kg	mg/kg	mg/kg	mg/kg	mg/kg	mg/kg
EQL	0.1	0.1	0.1	0.1	0.1	0.1	0.1	0.1	0.1	0.1
NEPM 2013 Table 1A(1) HILs Recreational C Soil									1 <sup>95</sup>	10
NEPM 2013 Table 7 HSLs for Asbestos in Soil - Residential C Soil										
NEPM 2013 Table 1B(1-4) Generic & Site Specific EIL - Urban Res & Public Open Space*										
NEPM 2013 Table 1B(6) ESIs for Urban Res, Coarse Soil >=0m, <2m										
NEPM 2013 Table 1B(6) ESIs for Urban Res, Fine Soil >=0m, <2m										
NEPM 2013 Table 1B(7) Management Limits in Res / Parkland, Coarse Soil										
NEPM 2013 Table 1B(7) Management Limits in Res / Parkland, Fine Soil										
ANZG 2018 DGV Toxicant values for Sediments (Table 1)									0.034	
NEPM 2013 Table 1A(3) Rec C Soil HSL for Vapour Intrusion, Clay										
>=0m, <1m										
>=1m, <2m										
>=2m, <4m										
>=4m										
NEPM 2013 Table 1A(3) Rec C Soil HSL for Vapour Intrusion, Sand										
>=0m, <1m										
>=1m, <2m										
>=2m, <4m										
>=4m										
NEPM 2013 Table 1A(3) Rec C Soil HSL for Vapour Intrusion, Silt										
>=0m, <1m										
>=1m, <2m										
>=2m, <4m										
>=4m										

Field ID	Location Code	Description	Sampled Date	Sample Depth (m)	Monophos-ethyl	Kochlor 1016	Kochlor 121	Kochlor 122	Kochlor 142	Kochlor 148	Kochlor 154	Kochlor 160	PCBs (Sum of total)	Hexachlorobenzene
<b>Reditus 2020 Data Gap Investigation</b>														
RCBH1	2020_Red_RCBH1	-	18-Mar-20	1	-	-	-	-	-	-	-	-	-	<0.1
RCBH1_3.0M	2020_Red_RCBH1	-	18-Mar-20	3	-	-	-	-	-	-	-	-	-	-
RCBH1_5.0M	2020_Red_RCBH1	-	18-Mar-20	5	-	-	-	-	-	-	-	-	-	<0.5
RCBH2_1.0M	2020_Red_RCBH2	-	18-Mar-20	1	-	-	-	-	-	-	-	-	-	<0.5
RCBH2_2.5M	2020_Red_RCBH2	-	18-Mar-20	2.5	-	-	-	-	-	-	-	-	-	<0.5
RCBH2_4.0M	2020_Red_RCBH2	-	18-Mar-20	4	-	-	-	-	-	-	-	-	-	-
RCBH2_5.0M	2020_Red_RCBH2	-	18-Mar-20	5	-	-	-	-	-	-	-	-	-	<0.5
RCMW2_0.5M	2020_Red_RCMW2	-	18-Mar-20	0.5	-	-	-	-	-	-	-	-	-	<0.5
RCMW2_1.0M	2020_Red_RCMW2	-	18-Mar-20	1	-	-	-	-	-	-	-	-	-	-
RCMW2_3.5M	2020_Red_RCMW2	-	18-Mar-20	3.5	-	-	-	-	-	-	-	-	-	-
RCMW2_5.5M	2020_Red_RCMW2	-	18-Mar-20	5.5	-	-	-	-	-	-	-	-	-	-
RCTP1_4.0	2020_Red_RCTP1	-	25-Mar-20	4	-	-	-	-	-	-	-	-	-	-
RCTP3_1.0	2020_Red_RCTP3	-	25-Mar-20	1	-	-	-	-	-	-	-	-	-	-
RCTP3_2.0	2020_Red_RCTP3	-	25-Mar-20	2	-	-	-	-	-	-	-	-	-	-
RCTP4_0.3	2020_Red_RCTP4	-	25-Mar-20	0.3	-	-	-	-	-	-	-	-	-	<0.5
RCTP4_1.0	2020_Red_RCTP4	-	25-Mar-20	1	-	-	-	-	-	-	-	-	-	<0.5
RCTP4_3.0	2020_Red_RCTP4	-	25-Mar-20	3	-	-	-	-	-	-	-	-	-	-
RCTP4_5.7	2020_Red_RCTP4	-	25-Mar-20	5.7	-	-	-	-	-	-	-	-	-	-
RCTP5_0.5	2020_Red_RCTP5	-	25-Mar-20	0.5	-	-	-	-	-	-	-	-	-	<0.5
RCTP5_1.5	2020_Red_RCTP5	-	25-Mar-20	1.5	-	-	-	-	-	-	-	-	-	-
RCTP5_2.2	2020_Red_RCTP5	-	25-Mar-20	2.2	-	-	-	-	-	-	-	-	-	-
RCTP5_4.0	2020_Red_RCTP5	-	25-Mar-20	4	-	-	-	-	-	-	-	-	-	-
RCTP5_5.8	2020_Red_RCTP5	-	25-Mar-20	5.8	-	-	-	-	-	-	-	-	-	-
RCTP6_0.5	2020_Red_RCTP6	-	25-Mar-20	0.5	-	-	-	-	-	-	-	-	-	<0.5
RCTP6_2.0	2020_Red_RCTP6	-	25-Mar-20	2	-	-	-	-	-	-	-	-	-	-
RCTP6_4.0	2020_Red_RCTP6	-	25-Mar-20	4	-	-	-	-	-	-	-	-	-	-
RCTP6_6.0	2020_Red_RCTP6	-	25-Mar-20	6	-	-	-	-	-	-	-	-	-	-
RCTP7_1.0	2020_Red_RCTP7	-	25-Mar-20	1	-	-	-	-	-	-	-	-	-	<0.5
RCTP7_3.0	2020_Red_RCTP7	-	25-Mar-20	3	-	-	-	-	-	-	-	-	-	-
RCTP7_5.6	2020_Red_RCTP7	-	25-Mar-20	5.6	-	-	-	-	-	-	-	-	-	-
RCTP8_0.5	2020_Red_RCTP8	-	25-Mar-20	0.5	-	-	-	-	-	-	-	-	-	<0.5
RCTP8_2.5	2020_Red_RCTP8	-	25-Mar-20	2.5	-	-	-	-	-	-	-	-	-	-
RCTP8_5.2	2020_Red_RCTP8	-	25-Mar-20	5.2	-	-	-	-	-	-	-	-	-	-
RCTP11_3.0	2020_Red_RCTP11	-	25-Mar-20	3	-	-	-	-	-	-	-	-	-	<0.5
RCTP11_5.0	2020_Red_RCTP11	-	25-Mar-20	5	-	-	-	-	-	-	-	-	-	-

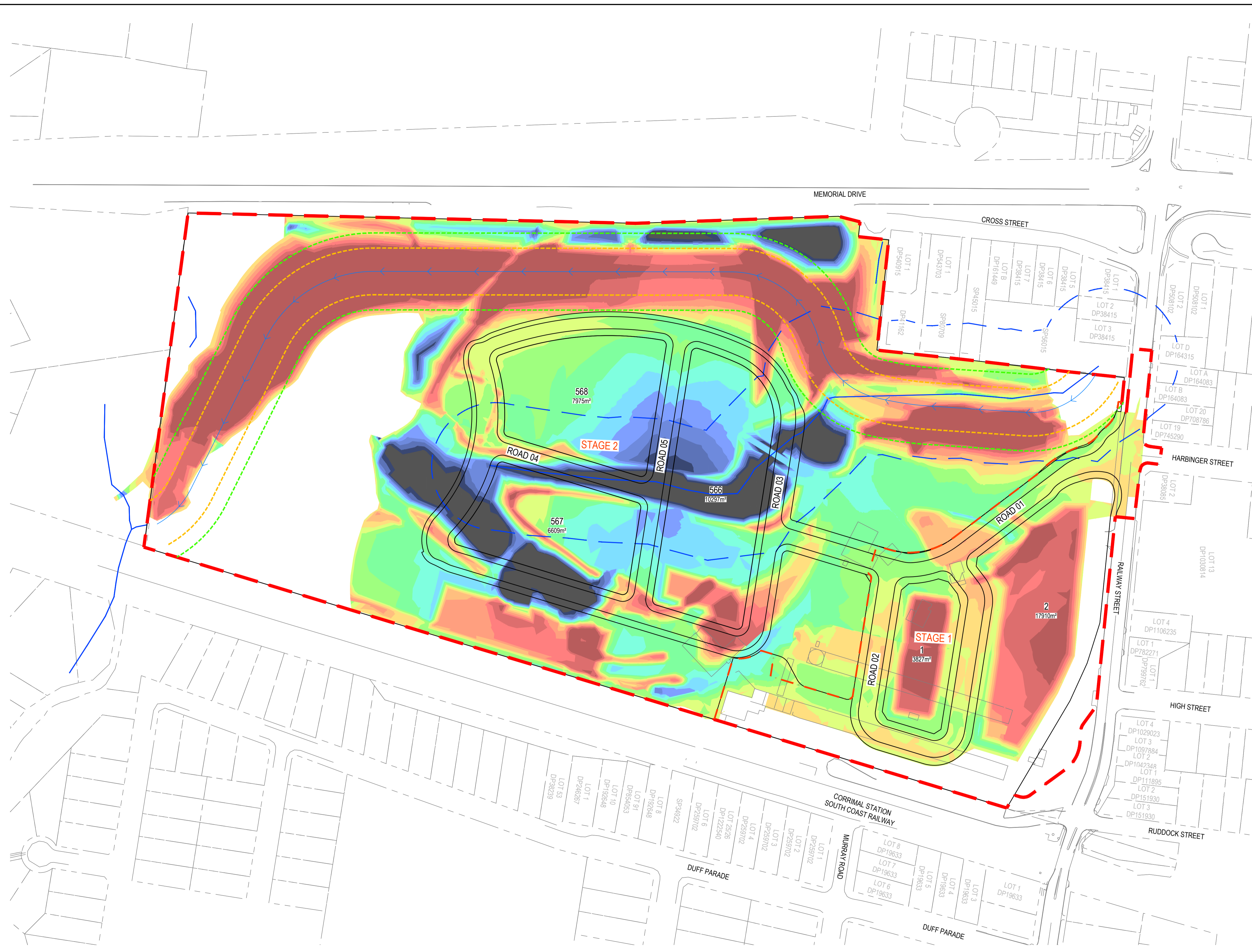
\*Generic & site-specific EIL values adopted from Arcadis (2019) RAP Appendix C, Table 2.  
\*\*Chromium III+IV HIL values adopted from Arcadis (2019) RAP Appendix C, Table 6.

Comments

- ND - No asbestos detected at the laboratory limit of reporting (0.1 g/kg)
- #1 Carcinogenic PAHs: HIL based on 8 carc. PAHs & their TEFs (rel to BaP ref Schedule 7) BaP TEQ Half calc by multiplying the conc of each carc. PAH in sample by its BaP TEF
- #2 Arsenic: HIL assumes 70% oral bioavailability. Site-specific bioavailability may be important and should be considered where appropriate (refer Schedule B7).
- #3 Lead: HILs A,B,C based on blood lead models (IEUBK & HIL D on adult lead model for where 50% bioavailability considered. Site-specific bioavailability should be considered wh
- #4 Elemental mercury: HIL does not address elemental mercury. a site specific assessment should be considered if elemental mercury is present, or suspected to be present.
- #5 PCBs: HIL refers to non-dioxin like PCBs only. Where PCB source is known, or suspected at a site, a site-specific assessment of exposure to all PCBs (inc dioxin like PCBs) shou
- #6 Aged values apply to arsenic contamination present in soil > 2 years. Refer Schedule B5c for < 2 years.
- #7 To obtain F1 subtract the sum of BTEX concentrations from the C6 - C10 fraction.
- #8 ERRATA Updated 30 April 2014. Naphthalene should not be subtracted.
- #9 Errata 30 April 2014. Naphthalene should not be subtracted from >C
- #10 Moderate reliability. To obtain F1 subtract the sum of BTEX concentrations from the C6 - C10 fraction.
- #11 Separate management limits for BTEX & naphthalene are not available hence should not be subtracted from the relevant fractions to obtain F1 & F2
- #12 To obtain F2 subtract naphthalene from the >C10 - C16 fraction.
- NL - Derived soil HSL exceeds soil saturation concentration, non-limiting



# Appendix C – Conceptual Design Plans



**PROPOSED**

- SITE BOUNDARY
- - - STAGING BOUNDARY
- LOT BOUNDARY
- OPEN DRAIN
- RIPARIAN ZONE INNER BOUNDARY
- RIPARIAN ZONE OUTER BOUNDARY

**LEGEND**

- █ GREATER THAN -3.0m
- █ -3.0m TO -2.5m
- █ -2.5m TO -2.0m
- █ -2.0m TO -1.5m
- █ -1.5m TO -1.0m
- █ -1.0m TO -0.5m
- █ -0.5m TO 0.0m
- █ 0.0m TO 0.5m
- █ 0.5m TO 1.0m
- █ 1.0m TO 1.5m
- █ 1.5m TO 2.0m
- █ 2.0m TO 2.5m
- █ 2.5m TO 3.0m
- █ 3.0m TO 3.5m
- █ 3.5m TO 4.0m
- █ 4.0m TO 4.5m
- █ GREATER THAN 4.5m

**EXISTING**

- LOT BOUNDARY
- EASEMENT

**TOTAL EARTHWORKS**

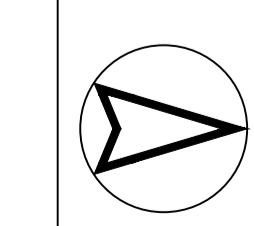
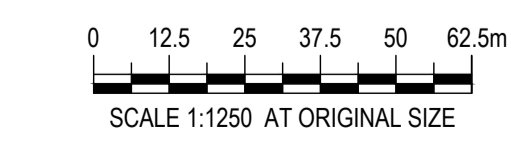
CUT	146,292 Cu.m
FILL	149,700 Cu.m
NET <FILL>	3,408 Cu.m

**NOTES:**

- VOLUMES EXCLUDE TOPSOIL STRIPPING, SERVICE TRENCHES AND PAVEMENT EXCAVATION

Corral Baldwin, 23/02/23 3:16 PM

REV	DATE	DESCRIPTION	AMD BY	APP BY
P1	03.02.23	ISSUED FOR INFORMATION	CJB	SS



DRAWN: C.BALDWIN	DESIGNED: C.WIEWIORA
DRAFT CHECK: C.WIEWIORA	DESIGN CHECK: S.SAIYANMONTAKUL
APPROVED: S.SAIYANMONTAKUL	
<b>NOT FOR CONSTRUCTION</b>	

<b>CORRIMAL COKE WORKS BULK EARTHWORKS LAYOUT PLAN</b>	
DRAWING NUMBER	MKR00452-00-SK045
SHEET No.	
ORIG. SIZE	A1
REVISION	P1