



FRASERS PROPERTY

EASTERN CREEK QUARTER

ROOTY HILL ROAD SOUTH, ROOTY HILL . NSW 2766

SIGNAGE ZONES

11 SEPTEMBER 2017
DA SUBMISSION





VIEW 1

SIGN A:
'EASTERN CREEK QUARTER'
max. dimensions
4.0m wide x 3.6m high

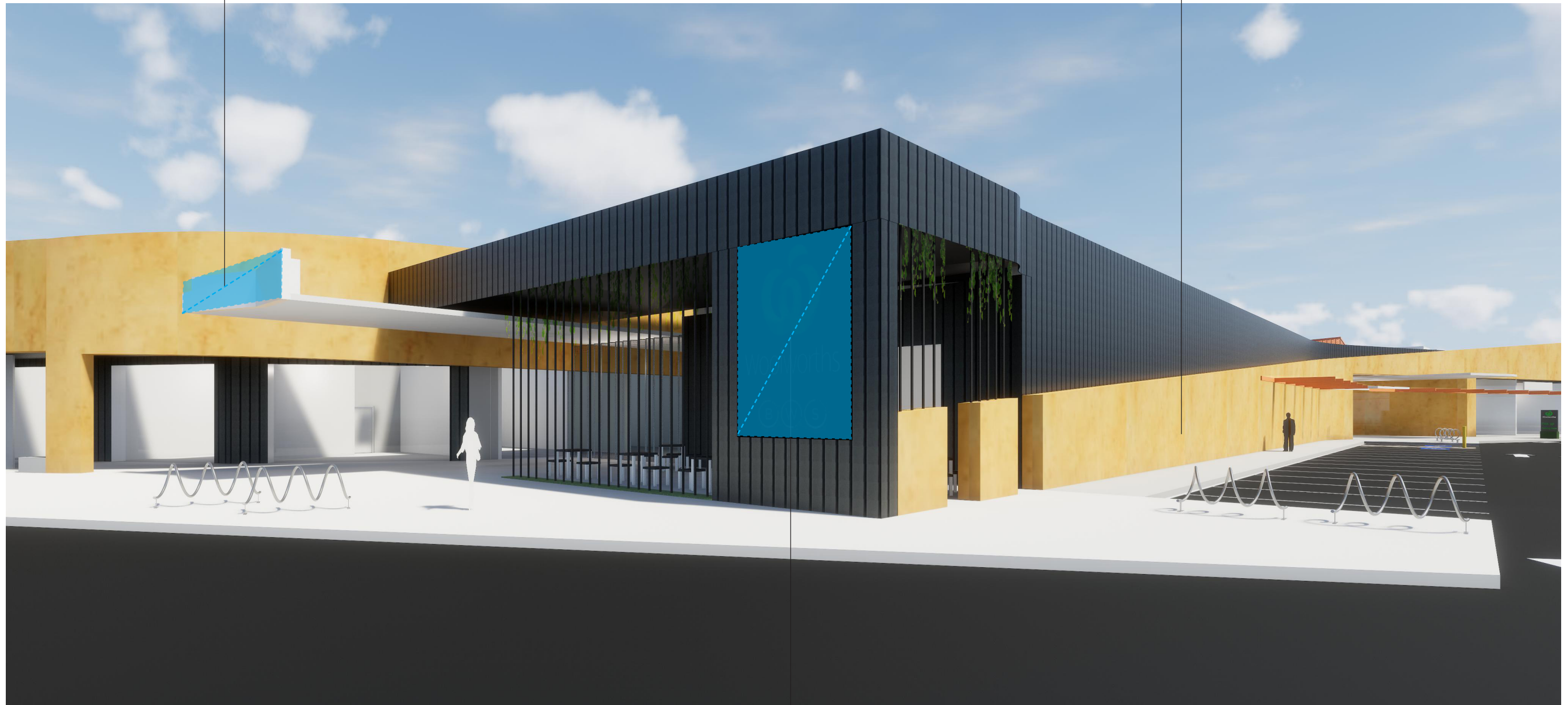
SIGN B
tenancy signage to folded screens
+ above shopfronts
1.8m wide x 0.6m high

SIGN C:
'EASTERN CREEK QUARTER'
3D lettering + major tenant
approx. 5.0m wide x 0.8m high

SIGN D:
tenant signage zone
max overall dimensions:
2.95m wide x 3.6m high

SIGN C:
'EASTERN CREEK QUARTER'
3D lettering + major tenant
approx. 5.0m wide x 0.8m high

no signage on feature wall



VIEW 2

SIGN D:
major tenant signage zone
max overall dimensions:
2.95m wide x 3.6m high



EASTERN CREEK QUARTER

"A place to be proud of where people feel completely comfortable"

SIGNAGE ZONES
REV A

PROJECT
2015-088
DATE
11.09.2017

DRAWING NO.
SZ03
DRAWN BY
TL/PL

MEL
SYD
PER
1800 422 533 i2c.COM.AU



no signage to feature wall

SIGN F:
tenancy signage to canopy
3D lettering
4.0m wide x 0.6m high



VIEW 3

SIGN E:
'EASTERN CREEK QUARTER'
3D lettering + major tenant
approx. 5.0m wide x 0.8m high

SIGN M:
major tenant Pick Up
zone pylon + marked parking zones
(x4 parking spaces)



VIEW 4

SIGN G:
tenancy signage to canopy
3D lettering
4.0m wide x 0.6m high

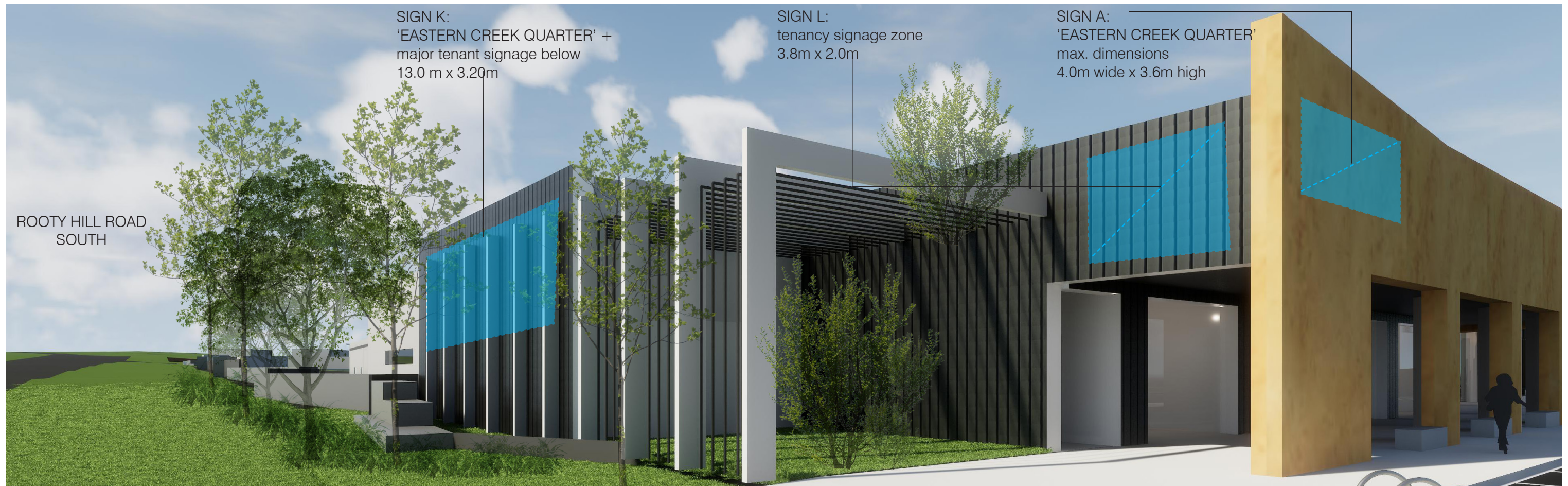


SIGN J:
major tenant external signage
dimensions: 3.5m wide x 0.75m high

VIEW 5

SIGN H:
tenancy blade signage along canopy
dimensions: 2.2m wide x 0.6m high

SIGN I:
tenancy signage under canopy
dimensions: 2.4m wide x 0.6m high



VIEW 6



VIEW 7

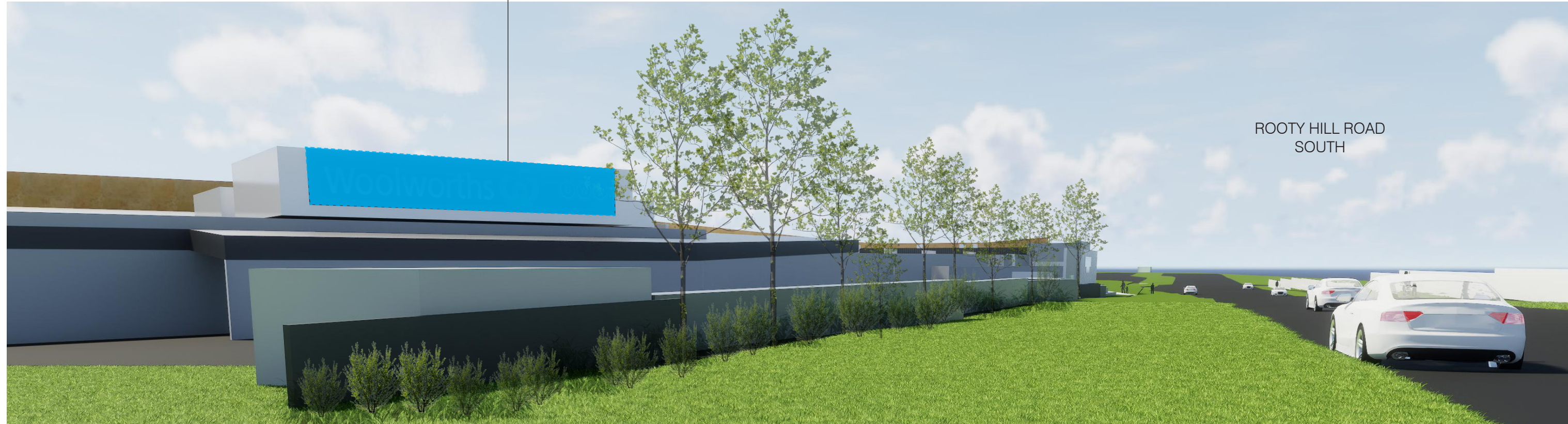


VIEW 8

SIGN M:
major tenant Pick Up
zone pylon + marked parking zones
(x4 parking spaces) 1.0 m x 2.0 m

SIGN N:
major tenant high level signage zone
max. dimensions: 14.9m wide x 2.5m high

SIGN M:
major tenant Pick Up
zone pylon + marked parking zones
(x4 parking spaces) 1.0 m x 2.0 m



VIEW 9

SIGN I:
tenancy signage under canopy
dimensions: 2.4m wide x 0.6m high

SIGN O:
major tenant high level signage zone
max. dimensions: 14.9m wide x 2.5m high



VIEW 10

SIGN J:
major tenant external signage
dimensions: 3.5m wide x 0.75m high

SIGN H:
tenancy blade signage along canopy
dimensions: 2.2m wide x 0.6m high



EASTERN CREEK QUARTER

"A place to be proud of where people feel completely comfortable"

SIGNAGE ZONES
REV A

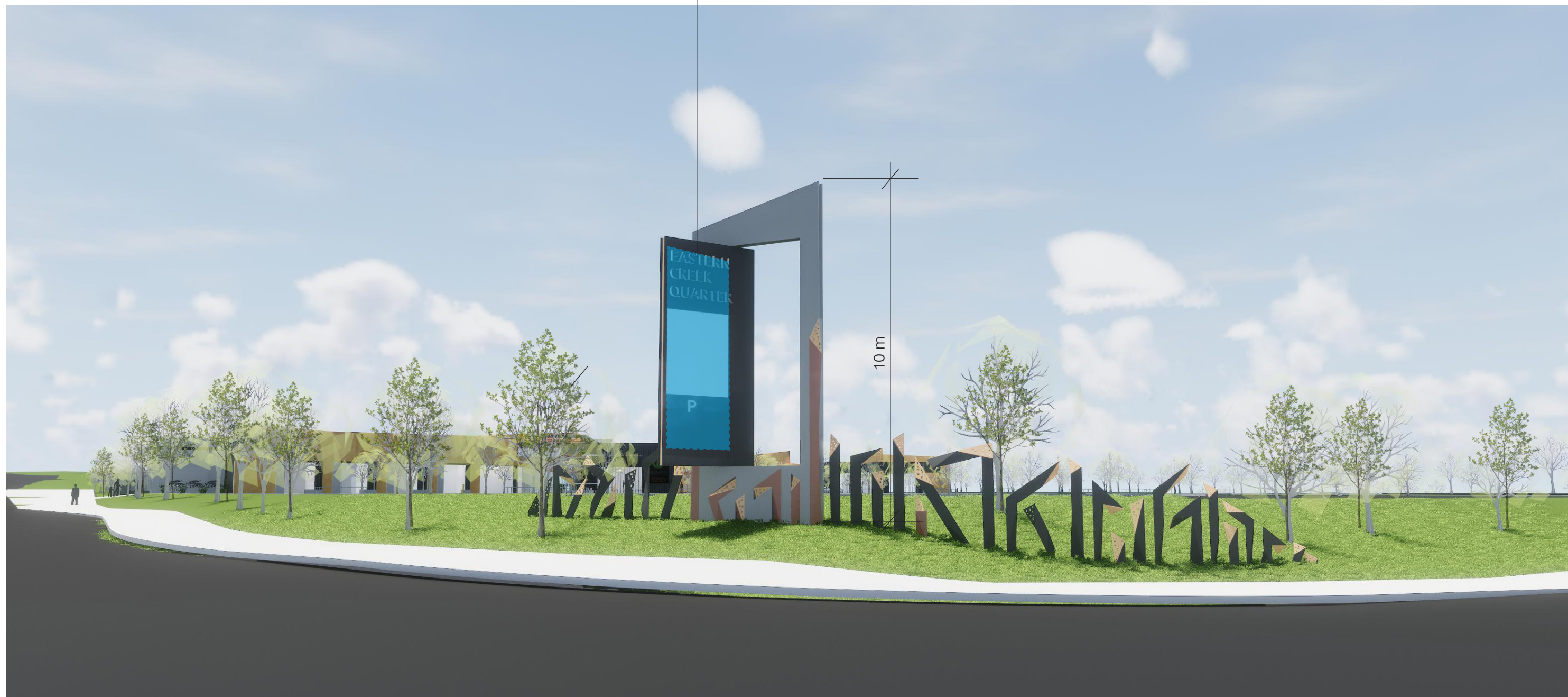
PROJECT
2015-088
DATE
11.09.2017

DRAWING NO.
SZ09
DRAWN BY
TL/PL

MEL
SYD
PER
1800 422 533 i2c.com.au



SIGN P:
 pylon sign: 'EASTERN CREEK QUARTER' +
 major tenant & tenancy signage below
 2.0 m x 6.0 m



VIEW 11



EASTERN CREEK QUARTER

"A place to be proud of where people feel completely comfortable"

SIGNAGE ZONES
 REV A

PROJECT
 2015-088
 DATE
 11.09.2017

DRAWING NO.
SZ10
 DRAWN BY
 TL/PL

MEL
 SYD
 PER
 1800 422 533 i2c.com.au

