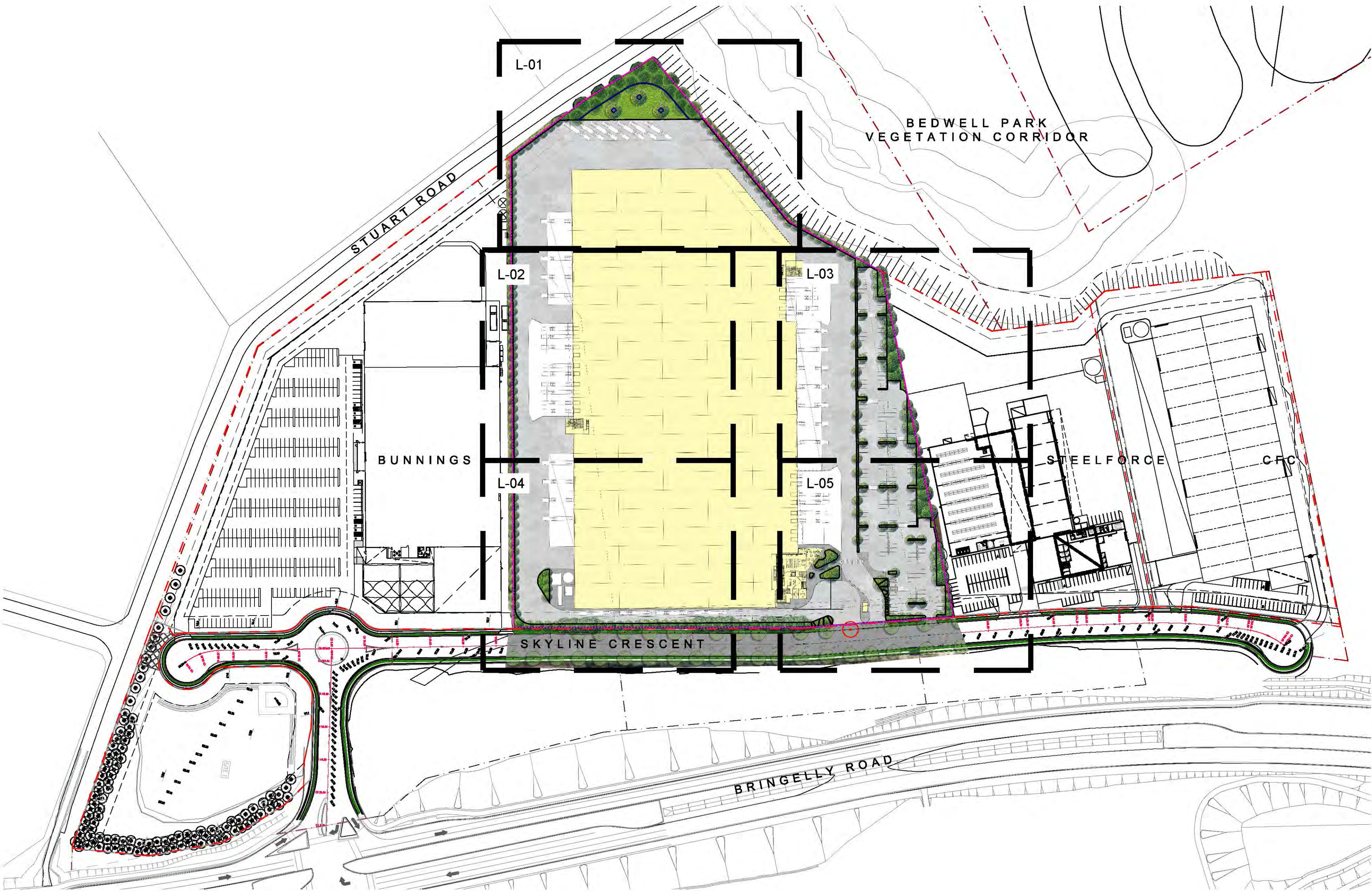


PROPOSED DISTRIBUTION FACILITY LOT 4

LANDSCAPE CONCEPT DOCUMENTATION

SKYLINE CRESCENT, BRINGELLY RD BUSINESS HUB NSW



BRINGELLY ESTATE MASTERPLAN
NTS



SITE CONTEXT

DRAWING REGISTER

- L-00 COVERSHEET
- L-01 LANDSCAPE PLAN 1 of 5
- L-02 LANDSCAPE PLAN 2 of 5
- L-03 LANDSCAPE PLAN 3 of 5
- L-04 LANDSCAPE PLAN 4 of 5
- L-05 LANDSCAPE PLAN 5 of 5
- L-06 PLANTING SCHEDULE & SPECIFICATION NOTES
- L-07 MAINTENANCE SCHEDULE
- L-08 LANDSCAPE DETAILS
- L-09 LANDSCAPE SECTIONS

GENERAL NOTES

- 1.0 These drawings must be read in conjunction with the drawing package from the consultant team including all engineering drawings.
- 2.0 Do not scale from these drawings - use figured dimensions (or CAD files)
- 3.0 SERVICES
Verify the 'as built' location of all existing services before excavation works are started. Services shown are indicative only.
- 4.0 FALLS
All pavement, planting & turf areas to be graded evenly. Ponding is unacceptable.
- 5.0 SURFACE LEVELS
Bulk surface levels to be verified on site post Civil Contractor works. All adjacent surfaces are to be level and flush unless stated or documented otherwise.
- 6.0 PLANT STOCK
Landscape Architect to approve plant stock prior to delivery on site.
- 7.0 PLANT SET OUT
Landscape Architect to approve plant set out on site prior to planting.

ISSUE	DATE	PURPOSE
A	21.07.20	CLIENT REVIEW
B	11.08.20	CLIENT REVIEW

Landscape Architect's work is subject to Copyright. Documents should not be used contrary to the purpose of the issue without written permission from Habit8.

NEVER scale off drawings, use figured dimensions only. Drawings indicate scope of works and general setout. These are not shop drawings.

CLIENT



PROJECT
BRINGELLY LOT 4
LANDSCAPE CONCEPT DOCUMENTATION
SKYLINE CRESCENT, BUSINESS ESTATE HUB NSW

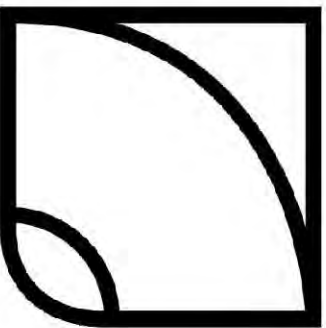
DRAWING TITLE
COVER SHEET

SCALE
AS SHOWN

DRAWN	CHECKED
KM	DV

PROJECT NO.	DRAWING NO.	REVISION
H8-2030	L-00	B

LANDSCAPE ARCHITECT:

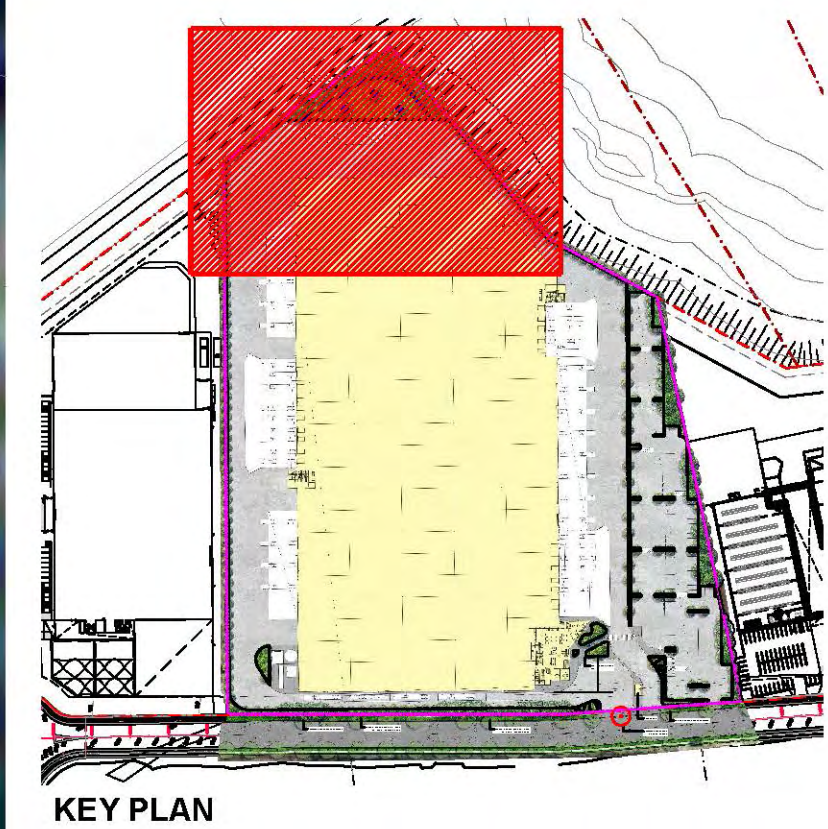


HABIT8
Landscape Architecture & Urbanism

Level 57, MLC Centre 19-29 Martin Place,
Sydney, NSW 2000
www.habit8.com.au
P: (02) 9360 7771



ISSUE	DATE	PURPOSE
A	21.07.20	CLIENT REVIEW
B	11.08.20	CLIENT REVIEW



Landscape Architect's work is subject to Copyright. Documents should not be used contrary to the purpose of the issue without written permission from Habit8.

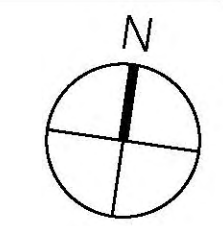
NEVER scale off drawings, use figured dimensions only. Drawings indicate scope of works and general setout. These are not shop drawings.

CLIENT



PROJECT
BRINGELLY LOT 4
LANDSCAPE CONCEPT DOCUMENTATION
SKYLINE CRESCENT, BUSINESS ESTATE HUB NSW

DRAWING TITLE
LANDSCAPE PLAN 1 OF 5



SCALE
1:250 @ A1 / 1:500 @ A3

DRAWN
KM

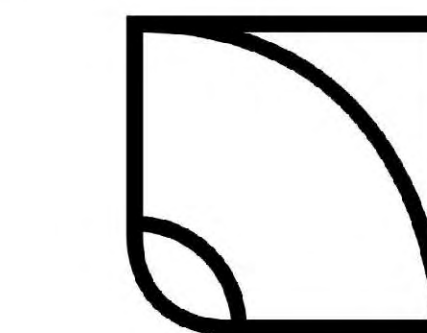
CHECKED
DV

PROJECT NO.
H8-2030

DRAWING NO.
L-01

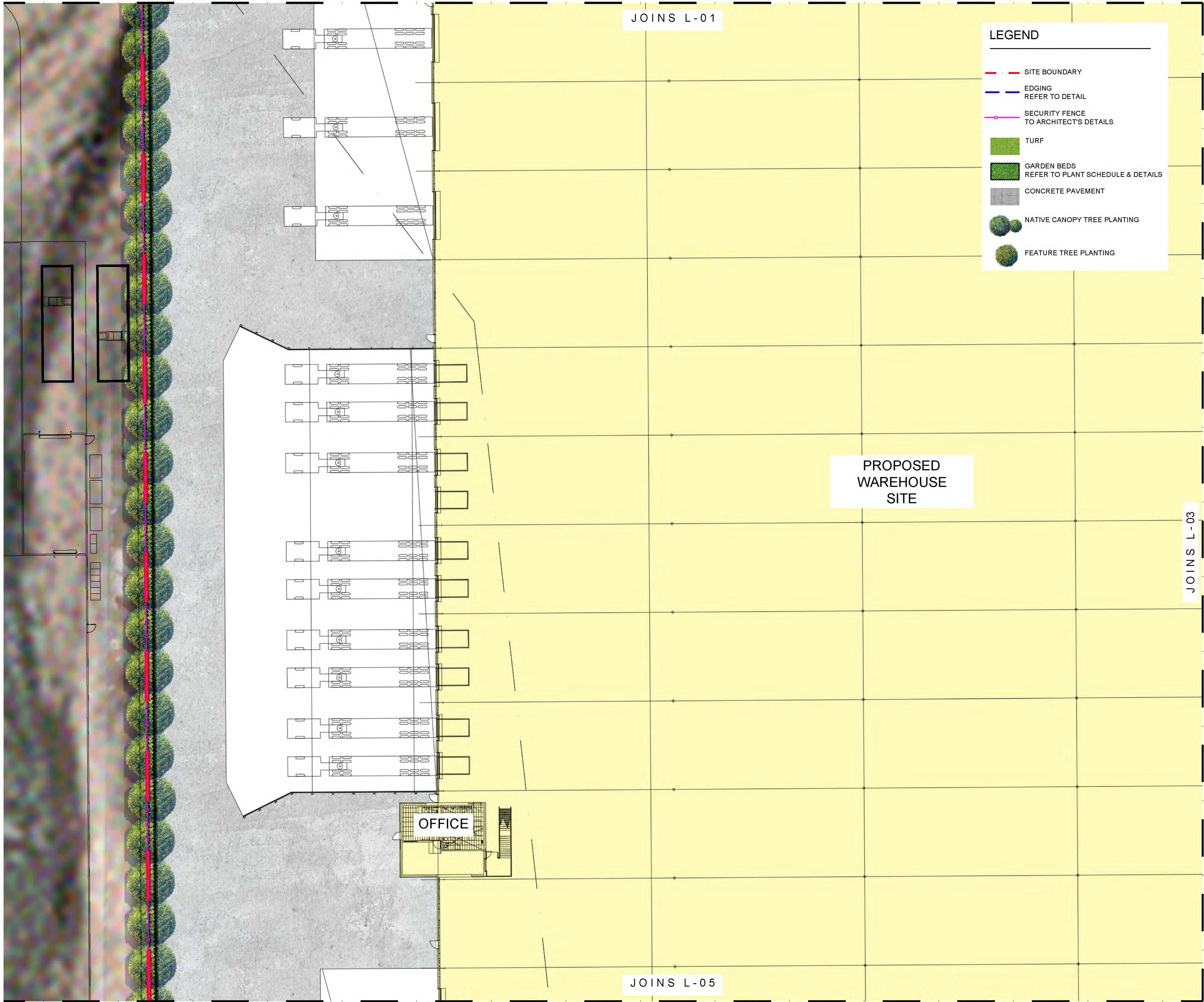
REVISION
B

LANDSCAPE ARCHITECT:

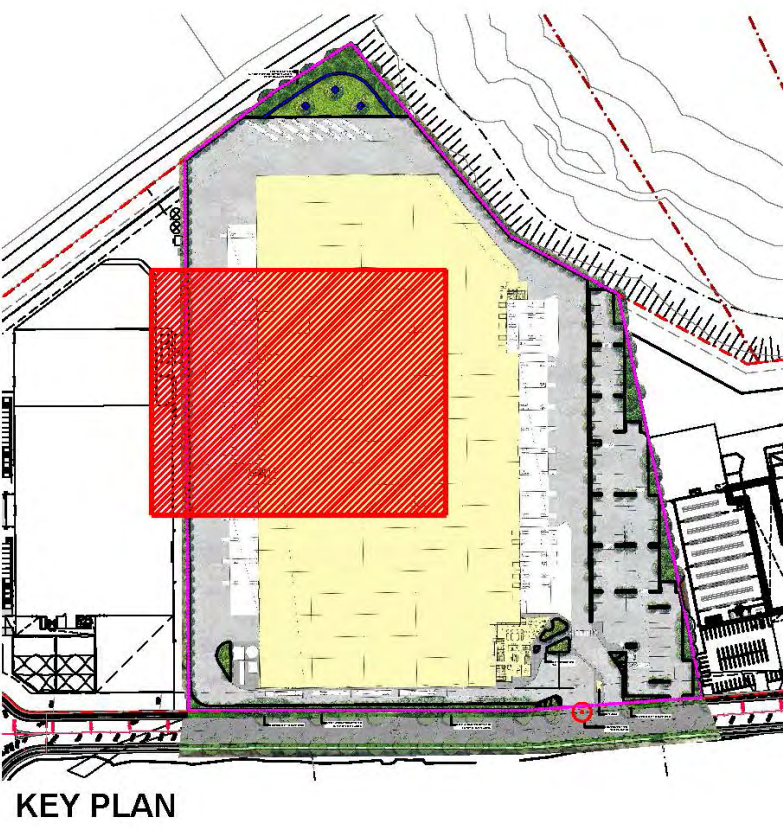


HABIT8
Landscape Architecture & Urbanism

Level 57, MLC Centre 19-29 Martin Place,
Sydney, NSW 2000
www.habit8.com.au
P: (02) 9360 7771



ISSUE	DATE	PURPOSE
A	21.07.20	CLIENT REVIEW
B	11.08.20	CLIENT REVIEW



Landscape Architect's work is subject to Copyright. Documents should not be used contrary to the purpose of the issue without written permission from Habit8.

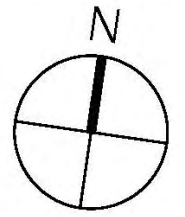
NEVER scale off drawings, use figured dimensions only. Drawings indicate scope of works and general setout. These are not shop drawings.

CLIENT



PROJECT
BRINGELLY LOT 4
LANDSCAPE CONCEPT DOCUMENTATION
SKYLINE CRESCENT, BUSINESS ESTATE HUB NSW

DRAWING TITLE
LANDSCAPE PLAN 2 OF 5



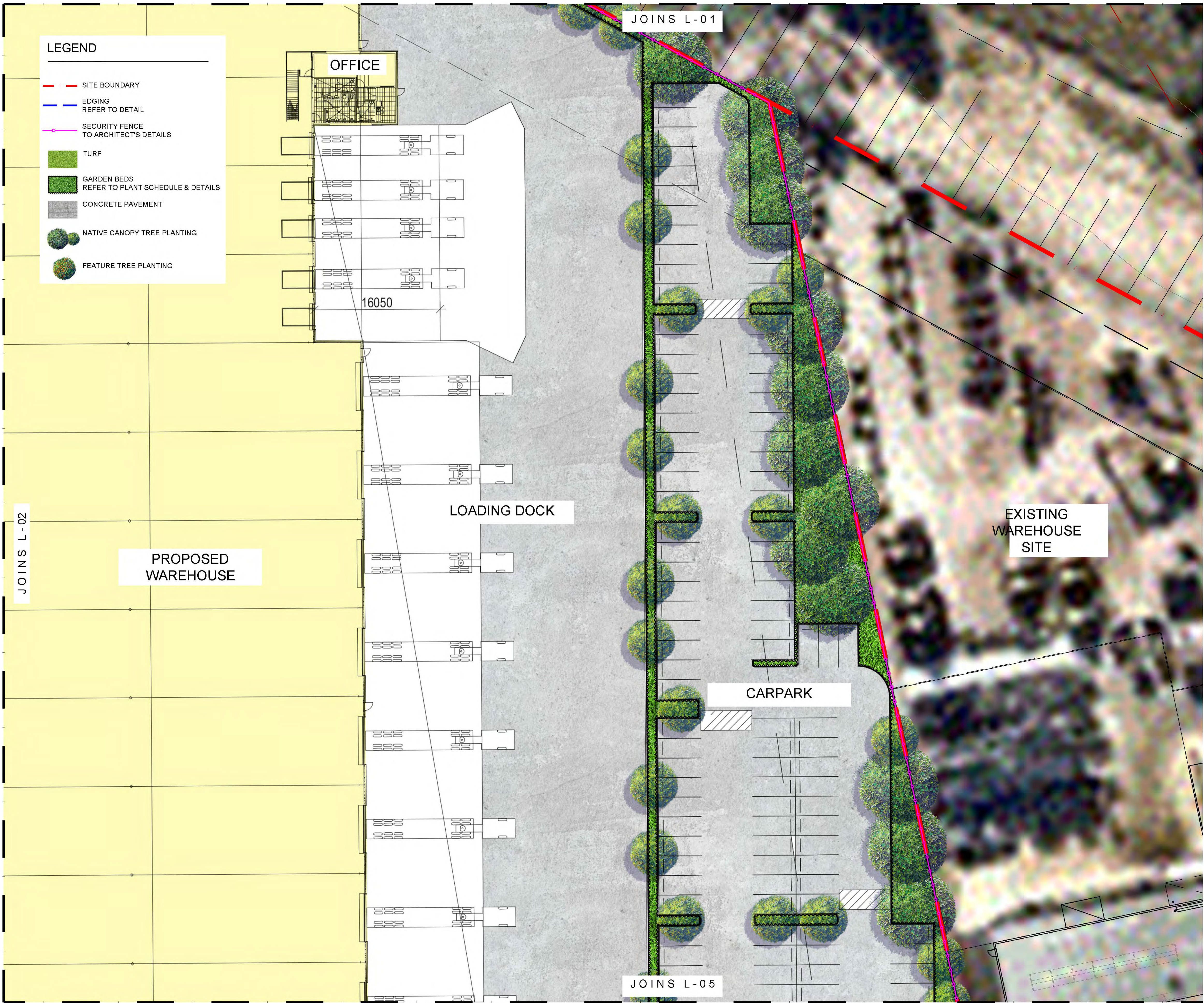
SCALE
1:250 @ A1 / 1:500 @ A3

DRAWN	CHECKED
KM	DV

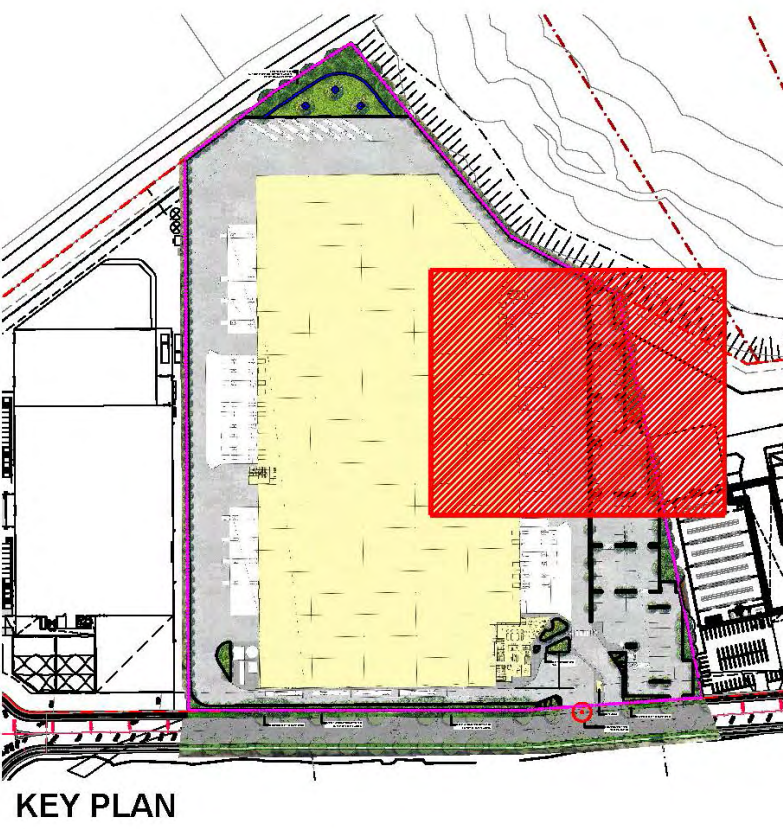
PROJECT NO.	DRAWING NO.	REVISION
H8-2030	L-02	B

LANDSCAPE ARCHITECT:





ISSUE	DATE	PURPOSE
A	21.07.20	CLIENT REVIEW
B	11.08.20	CLIENT REVIEW



Landscape Architect's work is subject to Copyright. Documents should not be used contrary to the purpose of the issue without written permission from Habit8.

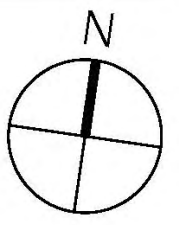
NEVER scale off drawings, use figured dimensions only. Drawings indicate scope of works and general setout. These are not shop drawings.

CLIENT



PROJECT
BRINGELLY LOT 4
LANDSCAPE CONCEPT DOCUMENTATION
SKYLINE CRESCENT, BUSINESS ESTATE HUB NSW

DRAWING TITLE
LANDSCAPE PLAN 3 OF 5

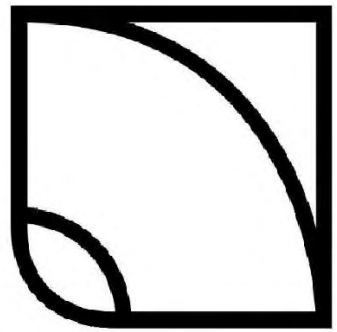


SCALE
1:250 @ A1 / 1:500 @ A3

DRAWN	CHECKED
KM	DV

PROJECT NO.	DRAWING NO.	REVISION
H8-2030	L-03	B

LANDSCAPE ARCHITECT:



HABIT8
Landscape Architecture & Urbanism

Level 57, MLC Centre 19-29 Martin Place,
Sydney, NSW 2000
www.habit8.com.au
P: (02) 9360 7771



ISSUE	DATE	PURPOSE
A	21.07.20	CLIENT REVIEW
B	11.08.20	CLIENT REVIEW



Landscape Architect's work is subject to Copyright. Documents should not be used contrary to the purpose of the issue without written permission from Habit8.

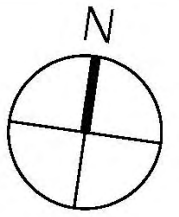
NEVER scale off drawings, use figured dimensions only. Drawings indicate scope of works and general setout. These are not shop drawings.

CLIENT



PROJECT
BRINGELLY LOT 4
LANDSCAPE CONCEPT DOCUMENTATION
SKYLINE CRESCENT, BUSINESS ESTATE HUB NSW

DRAWING TITLE
LANDSCAPE PLAN 4 OF 5

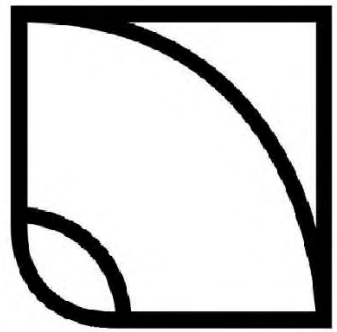


SCALE
1:250 @ A1 / 1:500 @ A3

DRAWN	CHECKED
KM	DV

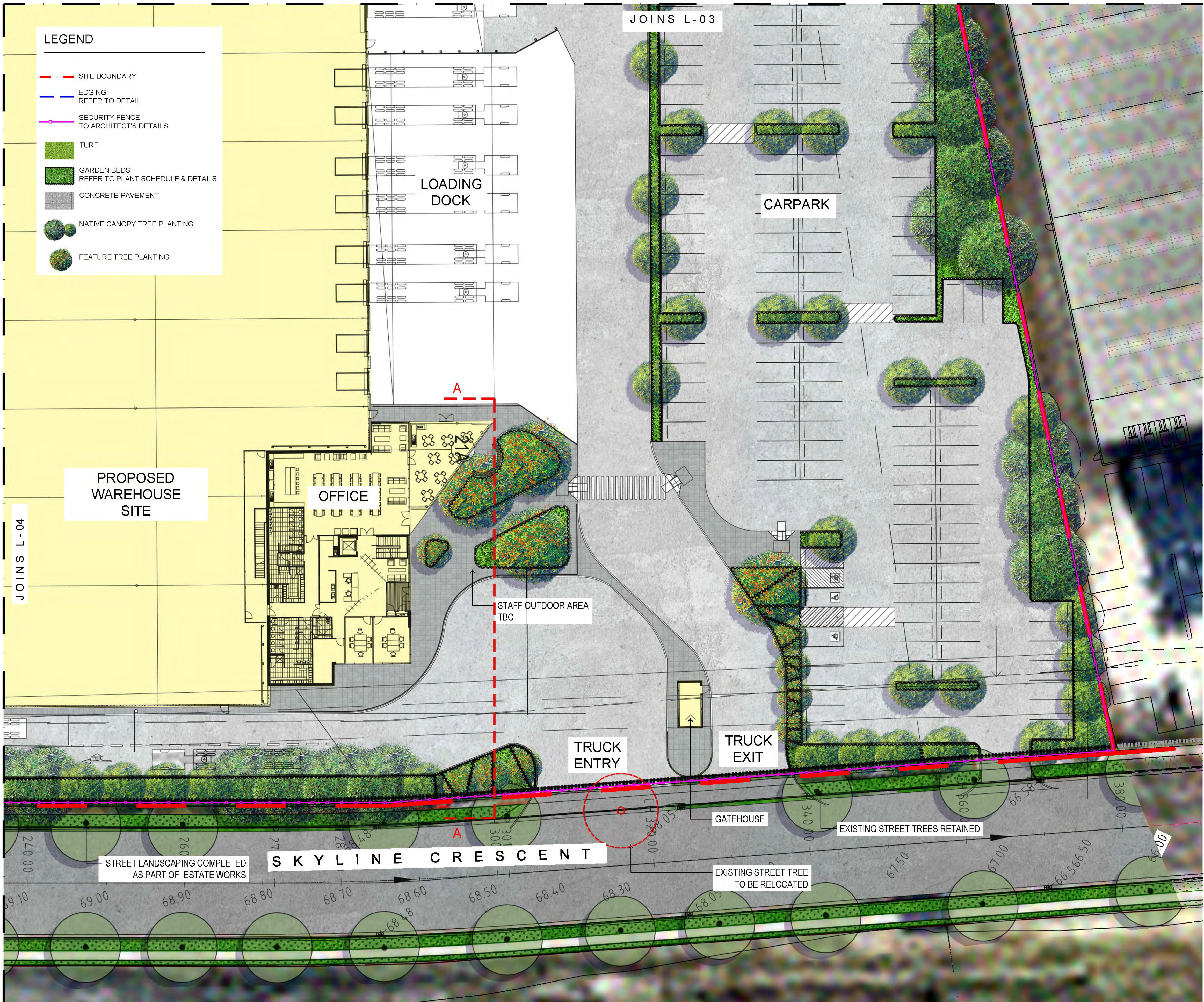
PROJECT NO.	DRAWING NO.	REVISION
H8-2030	L-04	B

LANDSCAPE ARCHITECT:

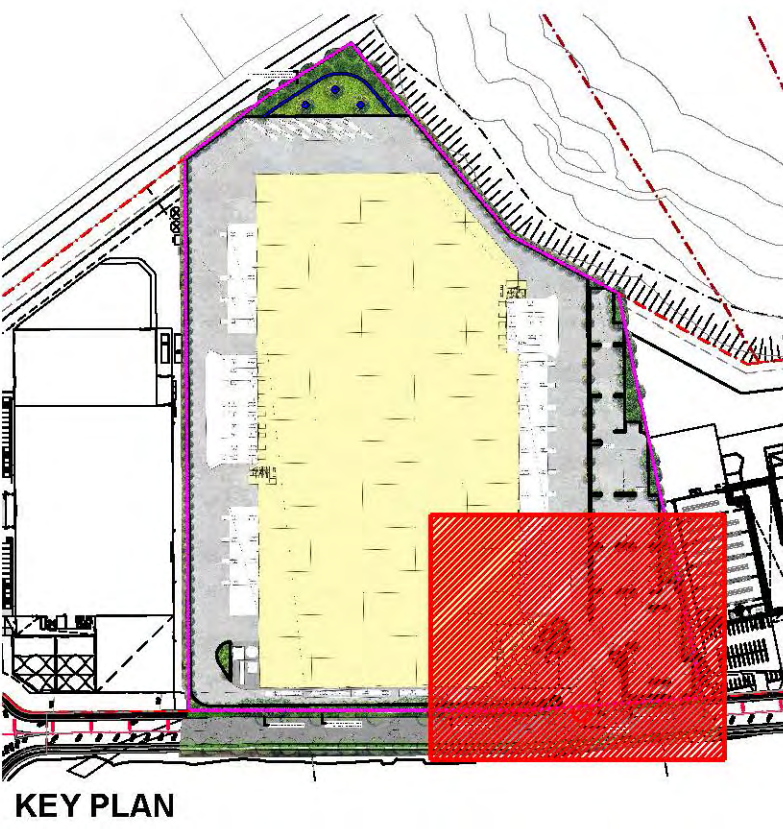


HABIT8
Landscape Architecture & Urbanism

Level 57, MLC Centre 19-29 Martin Place,
Sydney, NSW 2000
www.habit8.com.au
P: (02) 9360 7771



ISSUE	DATE	PURPOSE
A	21.07.20	CLIENT REVIEW
B	11.08.20	CLIENT REVIEW



Landscape Architect's work is subject to Copyright. Documents should not be used contrary to the purpose of the issue without written permission from Habit8.

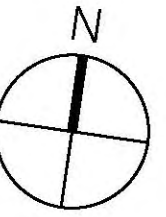
NEVER scale off drawings, use figured dimensions only. Drawings indicate scope of works and general setout. These are not shop drawings.

CLIENT



PROJECT
BRINGELLY LOT 4
LANDSCAPE CONCEPT DOCUMENTATION
SKYLINE CRESCENT, BUSINESS ESTATE HUB NSW

DRAWING TITLE
LANDSCAPE PLAN 5 OF 5



SCALE
1:250 @ A1 / 1:500 @ A3

DRAWN
KM

CHECKED
DV

PROJECT NO.
H8-2030

DRAWING NO.
L-05

REVISION
B

LANDSCAPE ARCHITECT:



HABIT8
Landscape Architecture & Urbanism

Level 57, MLC Centre 19-29 Martin Place,
Sydney, NSW 2000
www.habit8.com.au
P: (02) 9360 7771

Specification Notes (Typical)

SERVICES

Before landscape work is commenced the Landscape Contractor is to establish the position of all service lines and ensure tree planting is carried out at least 3 metres away from these services. Service lids, vents and hydrants shall be left exposed and not covered by any landscape finishes (turfing, paving, garden beds etc.) Finish adjoining surfaces flush with pit lids.

PLANTING MIXTURE

Imported Garden Mix.
Type: Garden Soil Mix
Available: Australian Native Landscapes (ANL)

MULCH

APPLICATION: Place mulch to the required depth, (refer to drawings) clear of plant stems, and rake to an even surface finishing 25mm below adjoining levels. Ensure mulch is watered in and tamped down during installation.

MULCH TYPE:

Type 1 (Street trees):
Pine bark: From mature trees, graded in size from 15mm to 30mm, free from wood slivers. Dark brown in colour and texture.
Type 2: (All other areas):
Forest Blend from ANL.

COMPOST

Shall be "GO Compost" as available from Soilco or approved equal.

ROOT BARRIER (DISCUSS WITH PROJECT MANAGER PRIOR TO CONSTRUCTION)

600mm deep root barrier installed to manufacturer's specification. To extend along path and back of kerb for 3m with side of trunk.

PLANT MATERIAL

All plants supplied are to conform with those species listed in the Plant Schedule on the drawings. Generally plants shall be vigorous, well established, hardened off, of good form consistent with species or variety, not soft or forced, free from disease or insect pests with large healthy root systems and no evidence of having been restricted or damaged. Trees shall have a leading shoot. Immediately reject dried out, damaged or unhealthy plant material before planting. All stock is to be container grown for a minimum of six (6) months prior to delivery to site.

FERTILISER

MASS PLANTING AREAS: Fertiliser shall be 'Nutricote' or approved equivalent in granule form intended for slow release of plant nutrients over a period of approximately nine months. Thoroughly mix fertiliser with planting mixture at the recommended rate, prior to installing plants.

TURF: Shall be Shirleys No. 17 or approved equal thoroughly mixed into the topsoil prior to placing turf.

TREES IN GRASS AND SUPER ADVANCED TREES: Pellets shall be in the form intended to uniformly release plant food elements for a period of approximately nine months equal to Shirleys Kokei pellets, analysis 6.3:1.8:2.9. Kokei pellets shall be placed at the time of planting to the base of the plant, 50mm minimum from the root ball at a rate of two pellets per 300mm of top growth to a maximum of 8 pellets per tree.

STAKING AND TYING

Stakes shall be straight hardwood, free from knots and twists, pointed at one end and sized according to size of plants to be staked.

- 5-15 litre size plant 1x(1200x25x25mm)
- 35-75 litre size plant 2x(1500x38x38mm)
- 100-greater than 200litre 3x(1800x50x50mm)

Ties shall be 50mm wide hessian webbing or approved equivalent nailed or stapled to stake. Drive stakes a minimum one third of their length, avoiding damage to the root system, on the windward side of the plant.

TURF

Obtain turf from a specialist grower of cultivated turf. turf shall be of even thickness, free from weeds and other foreign matter; lay in stretcher pattern with joints staggered and close butted, perpendicular to gradient of FSL. Water immediately after laying.

TURF TYPE: Kikuyu (Confirm with Council)

Landscape Maintenance Program (General)

Maintenance shall mean the care and maintenance of the landscape works by accepted horticultural practice as rectifying any defects that become apparent in the landscape works under normal use. This shall include, but shall not be limited to, watering, mowing, fertilising, re-seeding, returfing, weeding, pest and disease control, staking and tying, replanting, cultivation, pruning, aerating, renovating, top dressing, maintaining the site in a neat and tidy condition as follows:-

GENERAL

The landscape contractor shall maintain the landscape works for the term of the maintenance (or Plant establishment) period to the satisfaction of the council. The landscape contractor shall attend to the site on a weekly basis. The maintenance period shall commence at practical completion and continue for a period of twenty six (26) weeks.

WATERING

Grass, trees and garden areas shall be watered regularly so as to ensure continuous healthy growth.

RUBBISH REMOVAL

During the term of the maintenance period the landscape contractor shall remove rubbish that may occur and reoccur throughout the maintenance period. This work shall be carried out regularly so that at weekly intervals the area may be observed in a completely clean and tidy condition.

REPLACEMENTS

The landscape contractor shall replace all plants that are missing, unhealthy or dead at the Landscape Contractor's cost. Replacements shall be of the same size, quality and species as the plant that has failed unless otherwise directed by the Landscape Architect. Replacements shall be made on a continuing basis not exceeding two (2) weeks after the plant has died or is seen to be missing.

STAKES AND TIES

The landscape contractor shall replace or adjust plant stakes, and tree guards as necessary or as directed by the Landscape Architect. Remove stakes and ties at the end of the maintenance period if so directed.

PRUNING

General: Prune to reflect the natural growth flowering and regrowth habit of the individual species. Shrubs: Prune after flowering - Spring and Summer and on a spot basis as required. Hedge trimming: Schedule trimming at times which will maintain the character and design of hedges. Allow up to three times per season.

Tip pruning: To encourage development of new shoots during the active growing season. Do not remove buds before the flowering season in those plants that have terminal flowers.

Radical pruning: To maintain a hedge or formal shape or when a particular problem, growth habit, damage, or disease requires branch removal.

Trees: Prune to eliminate diseased or damaged growth, avoid inter-branch contact and thin out crowns in a natural manner, maintain sight lines to signs and lights, or maintain visibility for personal security. Tree branch removal to AS 4373. Give notice and engage a suitably qualified 'arborist'.

MULCHED SURFACES

All mulched surfaces shall be maintained in a clean and tidy condition and be reinstated if necessary to ensure that a depth of 75mm is maintained. Ensure mulch is kept clear of plant stems at all times. Remove all mulching materials off lawn or paved areas and maintain a clean and tidy appearance when viewed on a weekly basis.

PEST AND DISEASE CONTROL

The landscape contractor shall spray against insect and fungus infestation with all spraying to be carried out in accordance with the manufacturer's directions. Report all instances of pests and diseases (immediately that they are detected) to the Landscape Architect.

GRASS AND TURF AREAS

The landscape contractor shall maintain all grass and turf areas by watering, weeding, re-seeding, rolling, mowing, trimming or other operations as necessary. Seed and turf species shall be the same as the original specified mixture. Grass and turf areas shall be sprayed with approved selective herbicide against broad leafed weeds as required by the Landscape Architect and in accordance with the manufacturer's directions. Grass and turf areas shall be fertilised once a year in autumn with "Dynamic Lifter" for lawns at a rate of 20kg per 100m2. Fertiliser shall be watered in immediately after application. Irregularities in the grass and turf shall be watered in immediately after application. Grass and turf areas shall be kept mown to maintain a healthy and vigorous sward. Mowing height: 30-50mm.

WEED ERADICATION

Eradicate weeds by environmentally acceptable methods using a non-residual glyphosate herbicide (eg. 'Roundup') in any of its registered formulae, at the recommended maximum rate. Regularly remove by hand, weed growth that may occur or recur throughout grassed, planted and mulched areas. Remove weed growth from an area 750mm diameter around the base of trees in grassed areas. Continue eradication throughout the course of the works and during the maintenance period.

SOIL SUBSIDENCE

Any soil subsidence or erosion which may occur after the soil filling and preparation operations shall be made good by the landscape contractor at no cost to the client.

MAINTENANCE PERIOD:

52 weeks

Irrigation Notes (General)

IRRIGATION OVERVIEW - Confirm with Project Manager at tender stage.

EXTENT

All mass planting landscape areas and trees are to have full coverage by a fully automatic irrigation system. The design, materials and installation are to be in accordance with Sydney Water Codes and all relevant Australian Standards.

- An automatic irrigation system is to be installed to all turf and garden bed areas.
- The irrigation system shall be designed and installed by a licensed contractor to relevant Australian standards and Sydney water guidelines.
- The irrigation system shall be connected into the rainwater tank system and pump.

DRIPLINE

Provide 13mm dripline to all garden bed areas with appropriate 13mm joiners. Dripline to be Toro drip or similar with 400mm centre drippers. Install line at 500mm spacings with the first line to be 150mm in from edge. Install dripline after planting and prior to mulching to allow for an adequate mulch cover. Anchor at 1.5m maximum intervals with u-shaped stakes. Dripline pattern to suit planting.

CONTROL VALVES

24v solenoid actuated hydraulic valve with flow control. Control valves to be Toro ezflow series solenoids 25mm or approved equal. Provide a gate valve of the same size immediately upstream of each valve. House both valves in a high impact plastic valve box with a high impact plastic cover at finished ground level. Support the box with bricks on each side. Controller to be Toro greenkeeper or approved equal with a rain switch. Install a master valve/pressure regulating valve equal to Toro p220 with exreg pressure regulation valve. Filter to be installed equal to Toro y filter 75mm screen filter.

CONTROL WIRES

Connect the control valves and soil moisture sensor to the controller with double insulated underground cables laid alongside piping where possible. Lay intertwined for their full length without joints except at the valves and branches off common wires. Provide waterproof connectors.

Provide a backflow prevention device to Sydney water standards AS 3500.

DEFECTS LIABILITY PERIOD

The irrigation system shall be subject to a 12 month defects and liability period.

Relevant Australian Standards

Soil: AS4419, AS3743, AS4454
Mulch: AS4454
Tree: AS2303
Pruning: AS4373
Tree Protection: AS4970
Contractor to comply with the above Australian Standards

Plant Schedule (Proposed)

CODE	Botanical Name	Pot Size	Density	Quantity
TREES				
CBC	CORYMBIA 'Baby Citro'	45L	As Shown	
CUP	CUPANIOPSIS anacardioides	75L	As Shown	
ET	EUCALYPTUS tereticornis	45L	As Shown	
LI	LAGERSTROEMIA indica	45L	As Shown	
MLG	MAGNOLIA 'Little Gem'	45L	As Shown	
MDE	MELALEUCA decora	100L	As Shown	
MST	MELALEUCA styphelioides	100L	As Shown	
SHRUBS				
CC	CALLISTEMON citrinus	200mm	2/m ²	
CLJ	CALLISTEMON 'Little John'	200mm	3/m ²	
GRG	GREVILLEA 'Robyn Gordon'	200mm	2/m ²	
MT	METROSIDEROS thomasi	300mm	2/m ²	
NB	NANDINA domestica 'Blush'	200mm	3/m ²	
WFR	WESTRINGIA fruticosa	200mm	2/m ²	
CMA	CARISSA macrocarpa 'Desert Star'	200mm	3/m ²	
CAL	CORREA alba	200mm	2/m ²	
LPG	LOROPETALUM 'Plum Gorgeous'	200mm	2/m ²	
MCT	MELALEUCA 'Claret Tops'	200mm	2/m ²	
ROP	RAPHIOLEPIS 'Oriental Pearl'	200mm	2/m ²	
KSS	KALANCHOE 'Silver Spoons'	200mm	3/m ²	
GROUNDCOVERS				
BY	BESCHORNERIA yuccoides	150mm	4/m ²	
CG	CARPOBOTUS glaucescens	Tube stock	4/m ²	
HV	HARDENBERGIA violacea	Tube stock	4/m ²	
LT	LOMANDRA longifolia 'Tanika'	150mm	4/m ²	
AC	ADENANTHOS cuneatus 'Coral Carpet'	150mm	4/m ²	
FG	FESTUCA glauca	150mm	4/m ²	
GT	GAZANIA tomentosa	150mm	4/m ²	
GRM	GREVILLEA 'Poorinda Royal Mantle'	150mm	4/m ²	
HS	HIBBERTIA scandens	150mm	4/m ²	
LEG	LIRIOPE 'Evergreen Giant'	150mm	4/m ²	
MP	MYOPORUM parvifolium	150mm	4/m ²	
PR	PENNISETUM Rubrum	150mm	4/m ²	
TV	TULBAGHIA violacea	150mm	4/m ²	

PRE-SELECTED PLANT SCHEDULE (Available at Robert Donato Nursery: 0429 823 201)

CODE	Botanical Name	Pot Size	Density	Quantity
TREES				
ER	ELAEOCARPUS reticulatus	500mm	As Shown	
MTB	MAGNOLIA 'Teddy Bear'	100L	As Shown	
MCW	MAGNOLIA 'Cool Wind Gloss'	100L	As Shown	
WFL	WATERHOUSEA floribunda	75L	As Shown	
Single semi load-				
SHRUBS				
SSF	SYZYGIIUM australe 'Select Form'	300mm	2/m ²	

PLANTING NOTES:

PLANTS SOURCED AND PRE-GROWN AT ROBERT DONATO NURSERY.
CONTACT: 0429 823 201

ISSUE	DATE	PURPOSE
A	21.07.20	CLIENT REVIEW
B	11.08.20	CLIENT REVIEW

Landscape Architect's work is subject to Copyright. Documents should not be used contray to the purpose of the issue without written permission from Habit8.

NEVER scale off drawings, use figured dimensions only. Drawings indicate scope of works and general setout. These are not shop drawings.

CLIENT



PROJECT
BRINGELLY LOT 4
LANDSCAPE CONCEPT DOCUMENTATION
SKYLINE CRESCENT, BUSINESS ESTATE HUB NSW

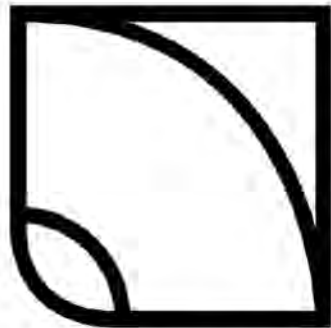
DRAWING TITLE
LANDSCAPE SPECIFICATION &
MAINTENANCE NOTES AND
PROPOSED PLANT SCHEDULE

SCALE
AS SHOWN

DRAWN	CHECKED
KM	DV

PROJECT NO.	DRAWING NO.	REVISION
H8-2030	L-06	B

LANDSCAPE ARCHITECT:



HABIT8
Landscape Architecture & Urbanism

Level 57, MLC Centre 19-29 Martin Place,
Sydney, NSW 2000
www.habit8.com.au
P: (02) 9360 7771

MAINTENANCE SCHEDULE

Activity	Frequency							Key Performance Standards
		Weekly	Fortnightly	Monthly	Quarterly	6 Months	Yearly	
Logbook		•						Logbook to be completed at every visit. Logbook to be available for inspection upon request.
Softworks								
Mowing	Spring		•					Grass Should be cut to a height of 30-50mm no more than one third of grass blade is to be removed at any one time. Clippings to be cleared.
	Summer		•					
	Autumn				•			
	Winter				•			
Edging								To be carried out in conjunction with adjacent mowing. Grass height to 30-50mm. Vertical edges to be completed on all pathways.
Lawn Fertilising	Spring			•				'2 Spec Elevate 24:1:10+2%FE' or similar NPK slow release fertilizer with a ratio of either 3-1-2 or 4-1-2 with the Nitrogen being in a slow release form. Application should be at the rate of 2-3kg per 100 square metres or as per the manufacturers recommended rate of application.
	Summer			•				
	Autumn				•			
	Winter				•			
Watering and Irrigation System Checks				•				Irrigation system to be checked fortnightly. Major repairs to system and extreme condition watering to be carried out as Additional Works.
Aeration							•	Mechanical coring to be carried out beginning of spring and autumn
Pruning - Native Grasses							•	Native grasses to be pruned annually in spring Lomandra - to be shaped
Pruning - Hedges				•				Maintain to a maximum new growth of 50mm
Pruning - Trees				•				Evergreen Trees to be pruned year round to maintain a healthy form
							•	Deciduous trees to be crown lifted annually to 2.5m and canopy shaped
Fertilising							•	Slow release NPK fertiliser to be applied quarterly Note: Use low phosphorus product on Native Species

Activity	Frequency							Key Performance Standards
		Weekly	Fortnightly	Monthly	Quarterly	6 Months	Yearly	
Weeding - Hardstand			•					Combination of hand and spray weeding Where weeds are greater than 25mm hand weeding to be carried out Use 'Roundup Bi Active' <u>without</u> dye
Weeding - Lawn						•		Where weeds are greater than 25mm hand weeding to be carried out Use broadleaf herbicide such as 'Javelin' or 'Spearhead'
Weeding - Garden Beds			•					Where weeds are greater than 25mm hand weeding to be carried out Use 'Roundup Bi Active' with dye
Rubbish and Litter Removal			•					General garden waste to be cleared. Any waste created by general maintenance duties eg grass clippings, pruning waste is to be removed off site weekly. General litter picking to be carried out on garden areas only

ISSUE	DATE	PURPOSE
A	21.07.20	CLIENT REVIEW
B	11.08.20	CLIENT REVIEW

Landscape Architect's work is subject to Copyright. Documents should not be used contray to the purpose of the issue without written permission from Habit8.

NEVER scale off drawings, use figured dimensions only. Drawings indicate scope of works and general setout. These are not shop drawings.

CLIENT



PROJECT
BRINGELLY LOT 4
LANDSCAPE CONCEPT DOCUMENTATION
SKYLINE CRESCENT, BUSINESS ESTATE HUB NSW

DRAWING TITLE
MAINTENANCE SCHEDULE

SCALE
NTS

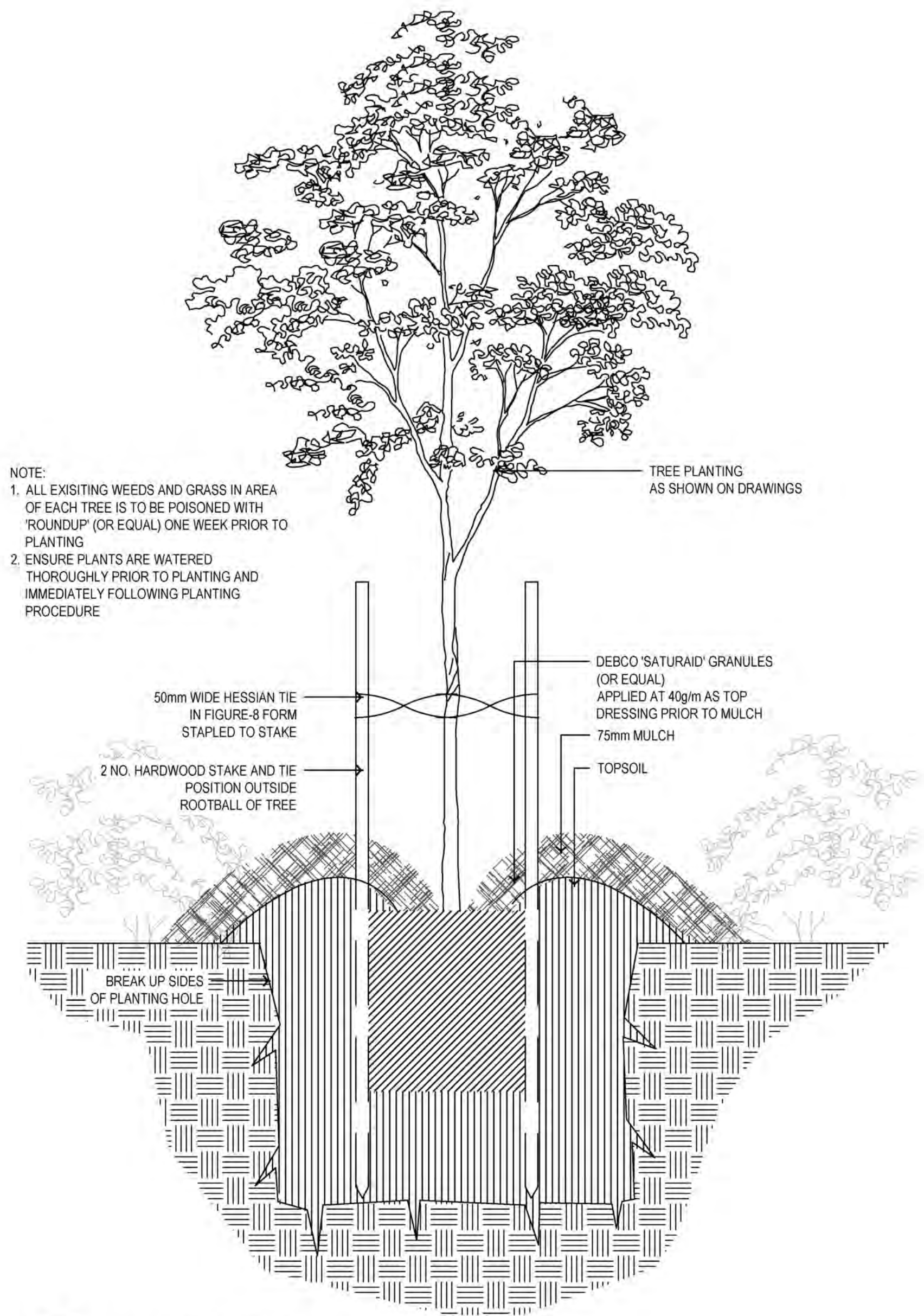
DRAWN KM	CHECKED DV
-------------	---------------

PROJECT NO. H8-2030	DRAWING NO. L-07	REVISION B
------------------------	---------------------	---------------

LANDSCAPE ARCHITECT:

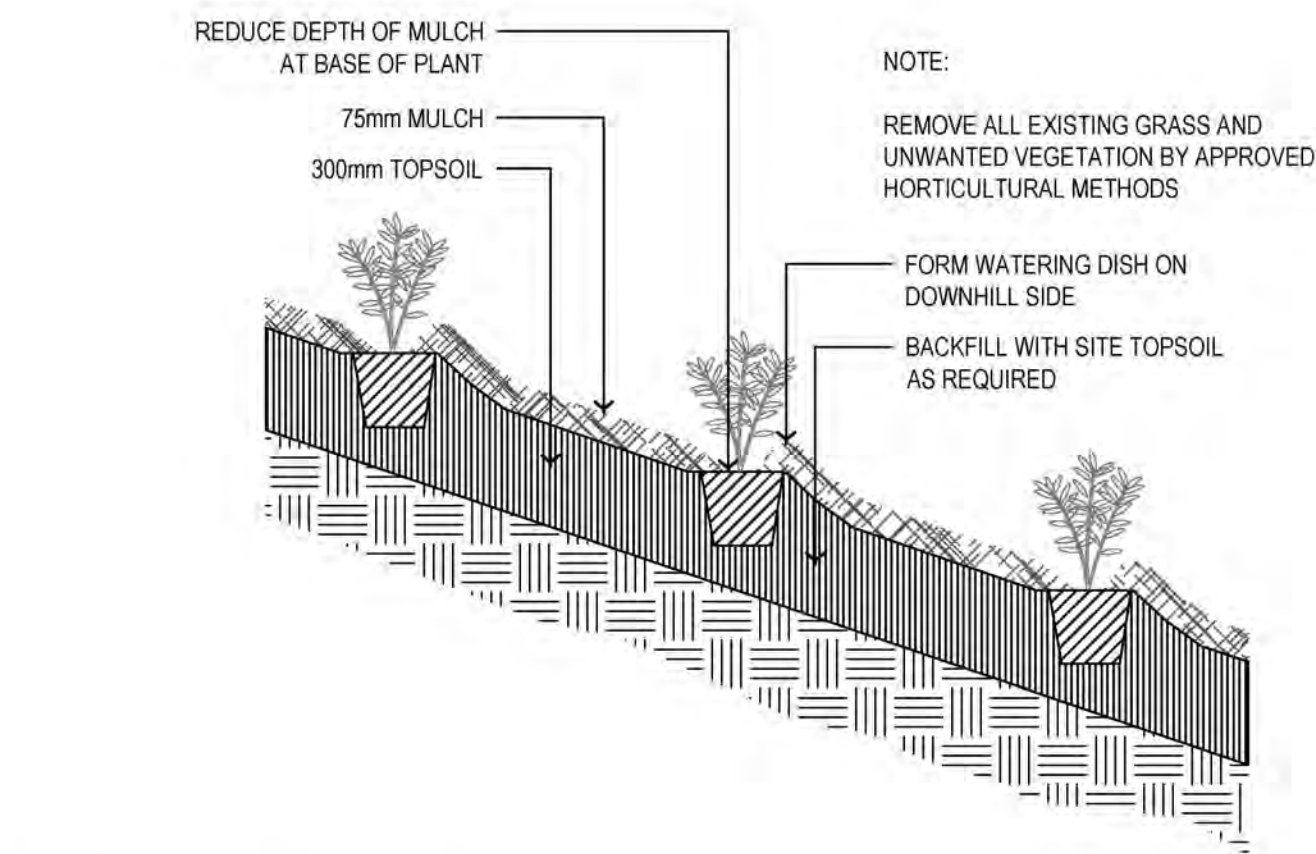


ISSUE	DATE	PURPOSE
A	21.07.20	CLIENT REVIEW
B	11.08.20	CLIENT REVIEW



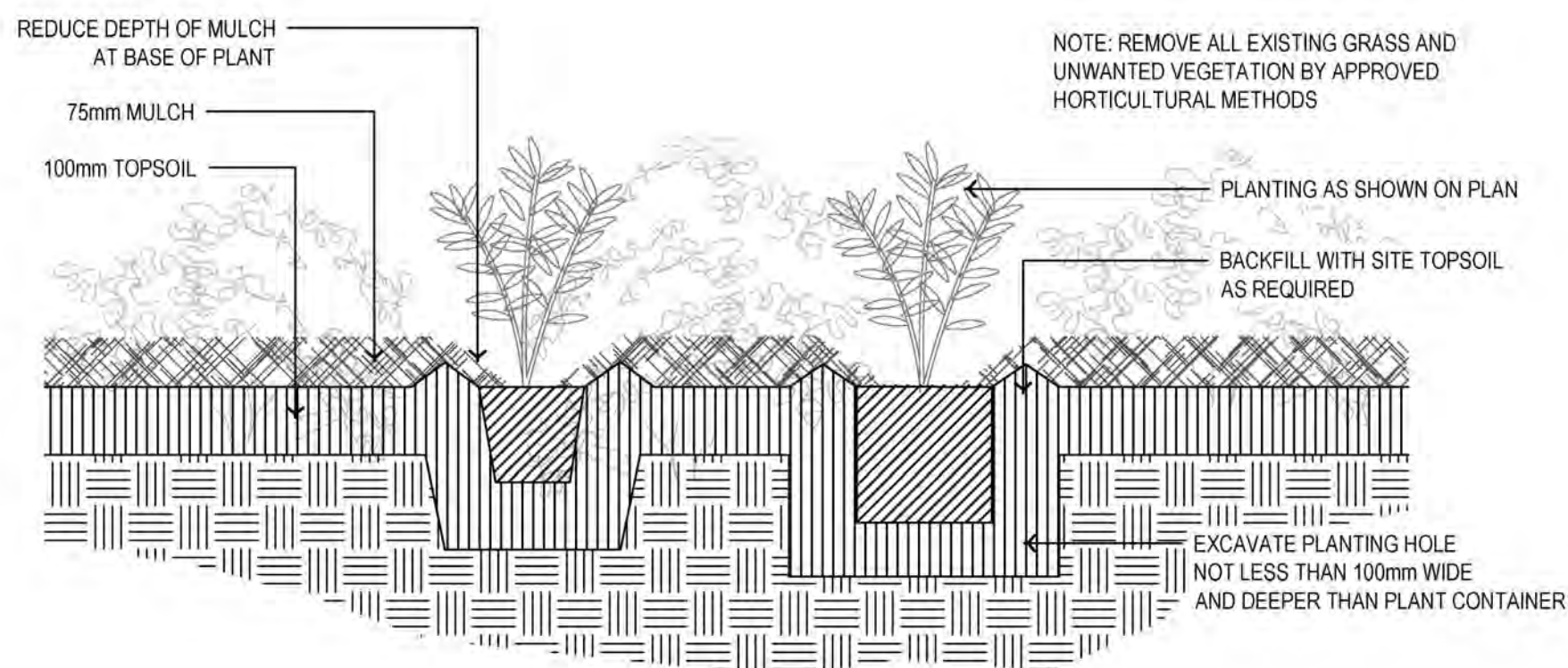
01 TREE PLANTING DETAIL (100L+)

SCALE 1: 10



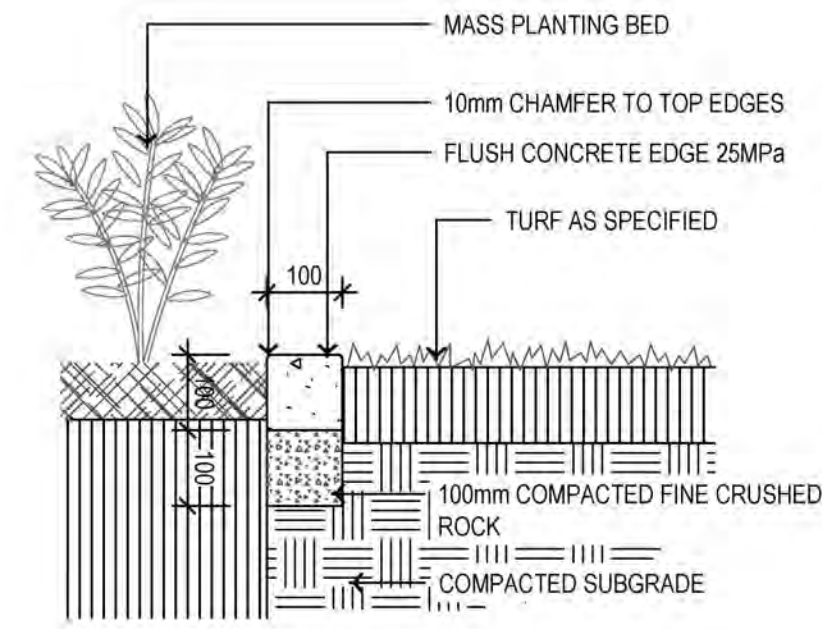
02 PLANTING ON EMBANKMENT DETAIL

SCALE 1: 20



03 MASS PLANTING DETAIL

SCALE 1: 10



04 CONCRETE EDGING DETAIL

SCALE 1: 10

Landscape Architect's work is subject to Copyright. Documents should not be used contrary to the purpose of the issue without written permission from Habit8.

NEVER scale off drawings, use figured dimensions only. Drawings indicate scope of works and general setout. These are not shop drawings.

CLIENT



PROJECT
BRINGELLY LOT 4
LANDSCAPE CONCEPT DOCUMENTATION
SKYLINE CRESCENT, BUSINESS ESTATE HUB NSW

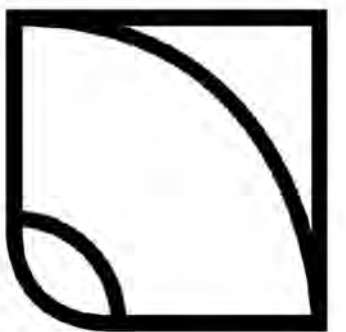
DRAWING TITLE
LANDSCAPE DETAILS

SCALE
AS SHOWN

DRAWN	CHECKED
KM	DV

PROJECT NO.	DRAWING NO.	REVISION
H8-2030	L-08	B

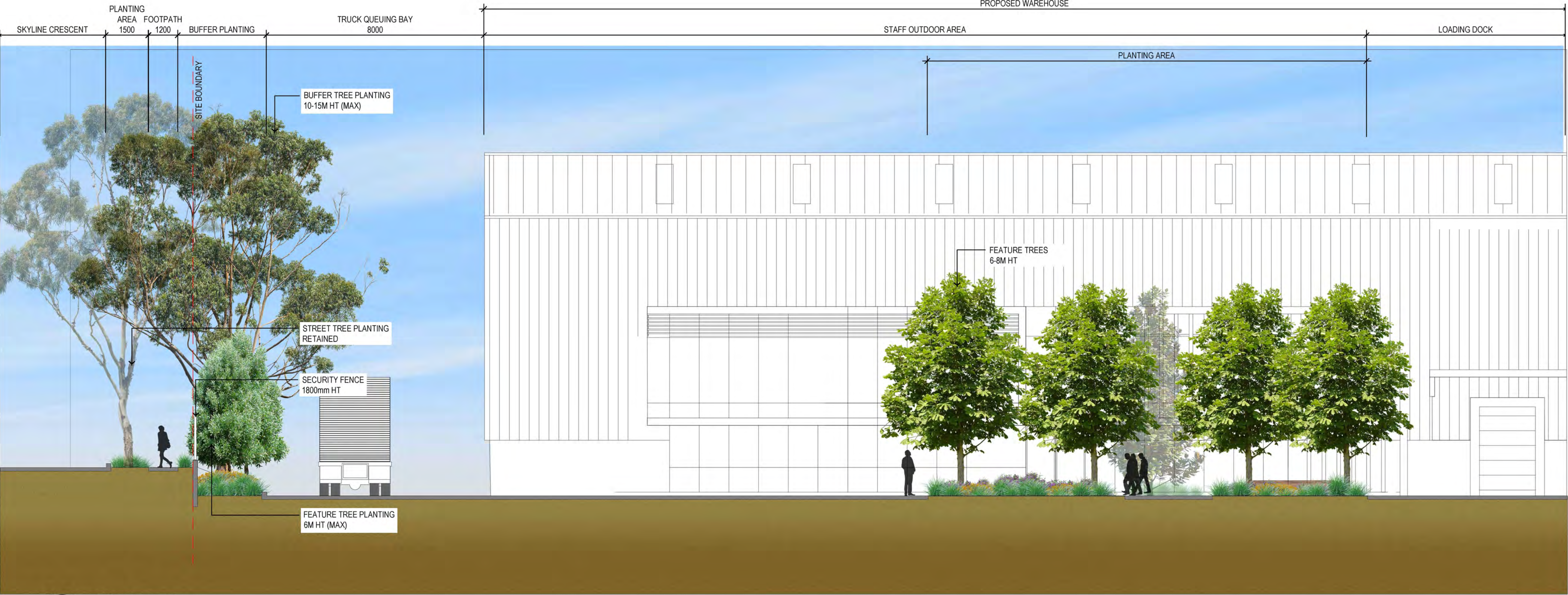
LANDSCAPE ARCHITECT:



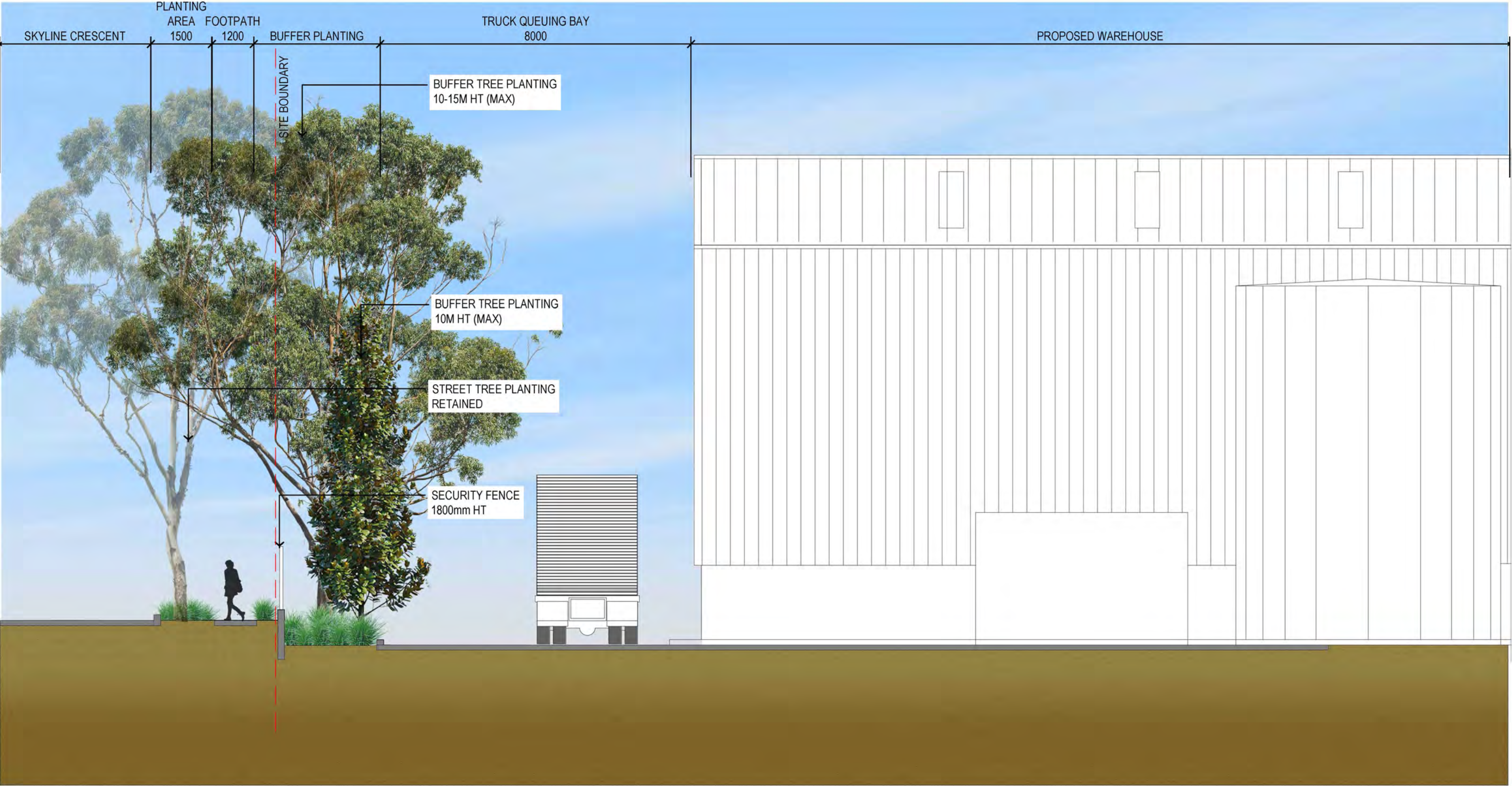
HABIT8
Landscape Architecture & Urbanism

Level 57, MLC Centre 19-29 Martin Place,
Sydney, NSW 2000
www.habit8.com.au
P: (02) 9360 7771

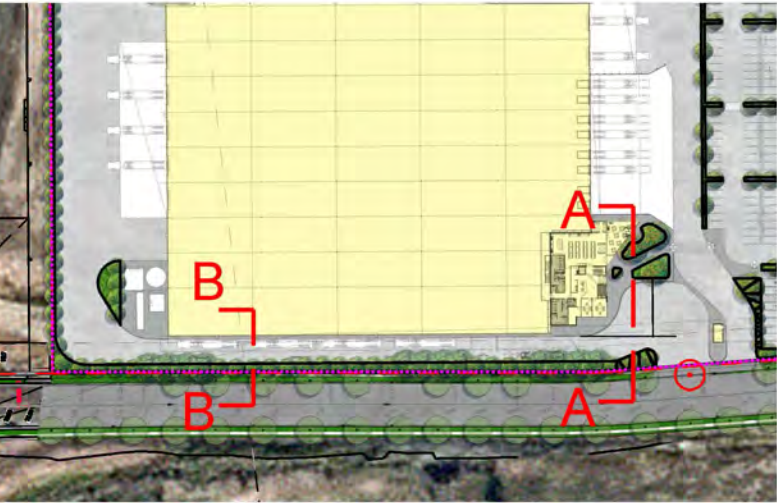
ISSUE	DATE	PURPOSE
A	21.07.20	CLIENT REVIEW
B	11.08.20	CLIENT REVIEW



01 SECTION A-A
SCALE 1 : 100 @A1



02 SECTION B-B
SCALE 1 : 100 @A1



KEY PLAN

Landscape Architect's work is subject to Copyright. Documents should not be used contrary to the purpose of the issue without written permission from Habit8.

NEVER scale off drawings, use figured dimensions only. Drawings indicate scope of works and general setout. These are not shop drawings.

CLIENT



PROJECT
BRINGELLY LOT 4
LANDSCAPE CONCEPT DOCUMENTATION
SKYLINE CRESCENT, BUSINESS ESTATE HUB NSW

DRAWING TITLE
LANDSCAPE SECTIONS

SCALE
AS SHOWN

DRAWN	CHECKED
KM	DV

PROJECT NO.	DRAWING NO.	REVISION
H8-2030	L-09	B

LANDSCAPE ARCHITECT:



HABIT8
Landscape Architecture & Urbanism

Level 57, MLC Centre 19-29 Martin Place,
Sydney, NSW 2000
www.habit8.com.au
P: (02) 9360 7771