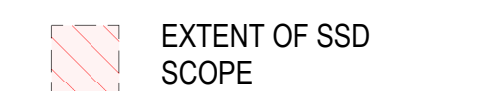
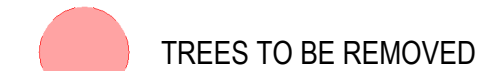
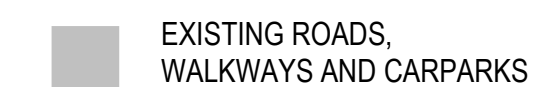
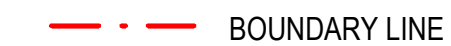
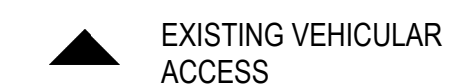


### LEGEND



## GRAY PUKSAND

**DISCLAIMER**

This document may not be secure, may be corrupted in transmission or due to software incompatibility and/or may be amended or altered by third parties after leaving Gray Puksand's possession

Gray Puksand is not responsible for and accepts no liability for such matters. Subject only to any conflicting provision within any prior binding agreement by Gray Puksand (which agreement may also contain additional conditions relating to this document and its use):

1. The content of this document is confidential and copyright in it belongs to Gray Puksand. They are permitted only to be opened, read and used by the addressee.
2. All users of this document must carry out all relevant investigations and must examine, take advice as required and satisfy themselves concerning the contents, correctness and sufficiency of the attachment and its contents for their purposes.


3. To the extent permitted by law, all conditions and warranties concerning this document or any use to which they may be put (whether as to quality, outcome, fitness, care, skill or otherwise) whether express or implied by statute, common law, equity, trade, custom or usage or otherwise are expressly excluded.

4. Any person using or relaying document releases indemnifies, and will keep indemnified, Gray Puksand against all claims, liabilities, loss, costs and expenses arising directly or indirectly out of or in connection with such use or reliance including without limitation any misrepresentation, error or defect in this document.

Contractors to use Architectural drawings for set out.  
Contractors to check & verify all Dimensions on Site prior to Construction/Fabrication.  
Figured Dimensions take precedence over Scaled Dimensions.  
Any Discrepancies should be immediately referred to the Architect.

NSW Nominated Architects Scott Moylan 7147 Craig Saltmarsh 6569

REV	DESCRIPTION	DATE
A	Test of Adequacy Submission	10-02-21
B	Issued for SSDA	04-03-21

PROJECT NO	<b>220090</b>	
DRAWN	<b>PW</b>	
CHECKED	<b>SS</b>	
APPROVED	<b>BH</b>	

**TAFE NSW Construction  
Centre of Excellence**  
12-44 O'connell St, Kingswood  
NSW 2747

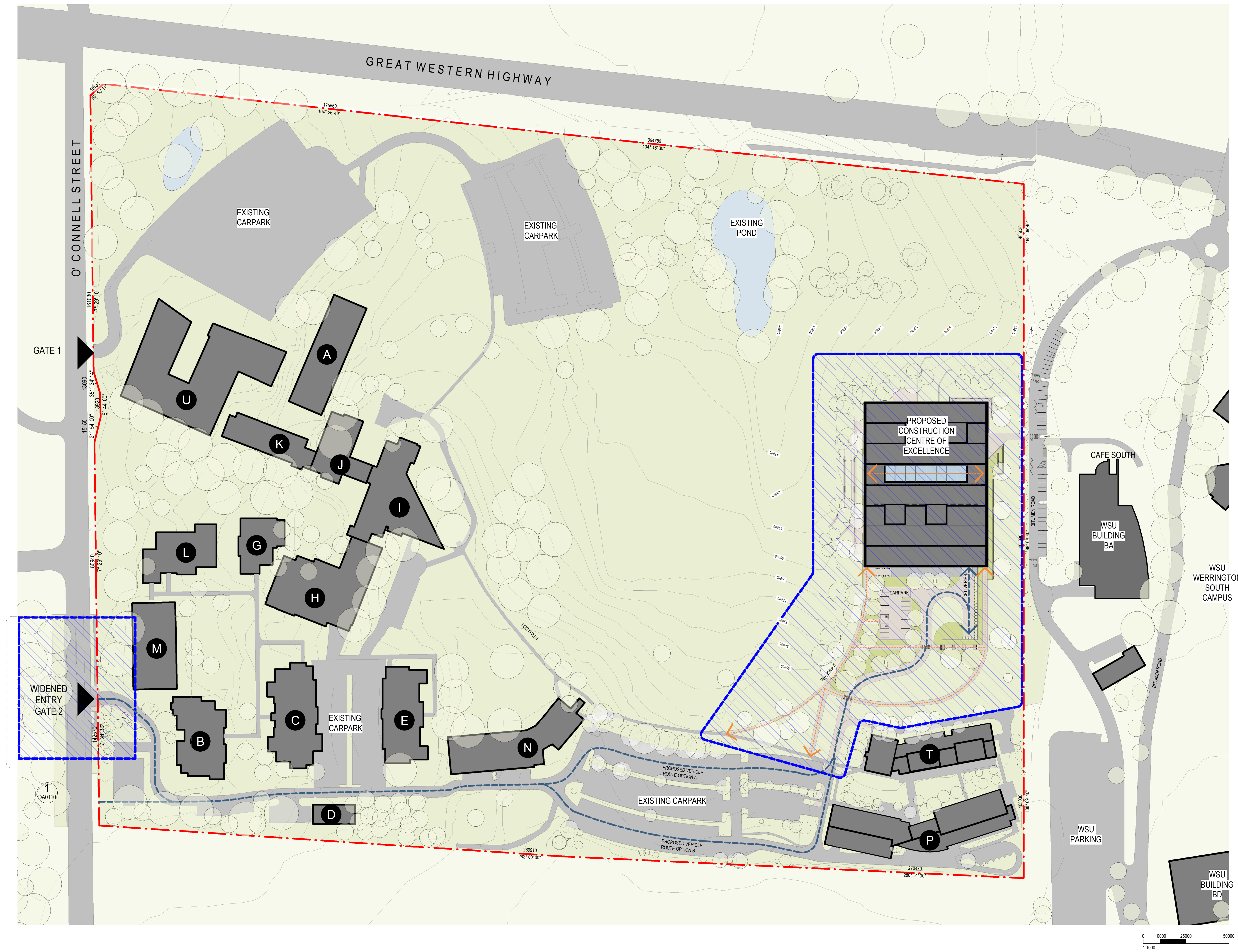
## SSDA

### SITE PLAN - DEMOLITION

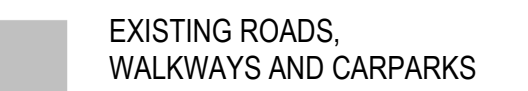
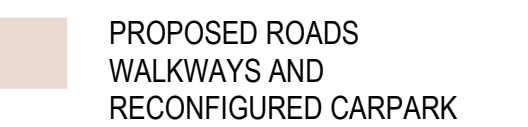
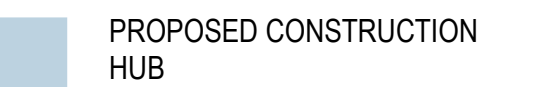
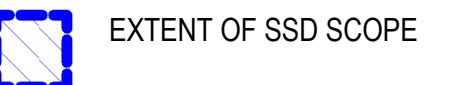
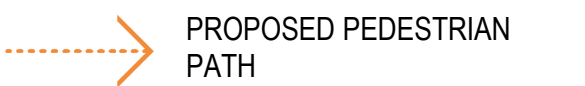
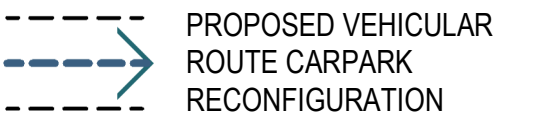
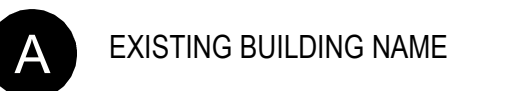
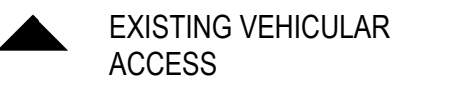
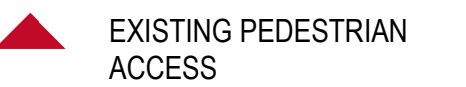
DWG # **DA0101** REV **B**

SCALE @ A1 As indicated





## LEGEND



## GRAY PUKSAND

## DISCLAIMER

This document may not be secure, may be corrupted in transmission or due to software incompatibility and/or may be amended or altered by third parties after leaving Gray Puksand's possession

Gray Puksand is not responsible for and accepts no liability for such matters. Subject only to any conflicting provision within any prior binding agreement by Gray Puksand (which agreement may also contain additional conditions relating to this document and its use):

1. The content of this document is confidential and copyright in it belongs to Gray Puksand. They are permitted only to be opened, read and used by the addressee.

2. All users of this document must carry out all relevant investigations and must examine, take advice as required and satisfy themselves concerning the contents, correctness and sufficiency of the attachment and its contents for their purposes.

3. To the extent permitted by law, all conditions and warranties concerning this document or any use to which they may be put (whether as to quality, outcome, fitness, care, skill or otherwise) whether express or implied by statute, common law, equity, trade, custom or usage or otherwise are expressly excluded.

4. Any person using or relaying document releases indemnifies, and will keep indemnified, Gray Punks and against all claims, liabilities, loss, costs and expenses arising directly or indirectly out of or in connection with such use or reliance including without limitation any misrepresentation, error or defect in this document.

Contractors to use Architectural drawings for set out.  
Contractors to check & verify all Dimensions on Site prior to Construction/Fabrication.  
Figured Dimensions take precedence over Scaled Dimensions.  
Any Discrepancies should be immediately referred to the Architect.

NSW Nominated Architects: Scott Moulan 7147 Craig Saltmarsh 6569

REV	DESCRIPTION	DATE
A	Test of Adequacy Submission	10-02-21
B	Issued for SSDA	04-03-21
C	Issued for SSDA	11-03-21

PROJECT NO	220090
DRAWN	PW
CHECKED	SS
APPROVED	BH

**TAFE NSW Construction  
Centre of Excellence**  
12-44 O'Connell St, Kingswood  
NSW 2747

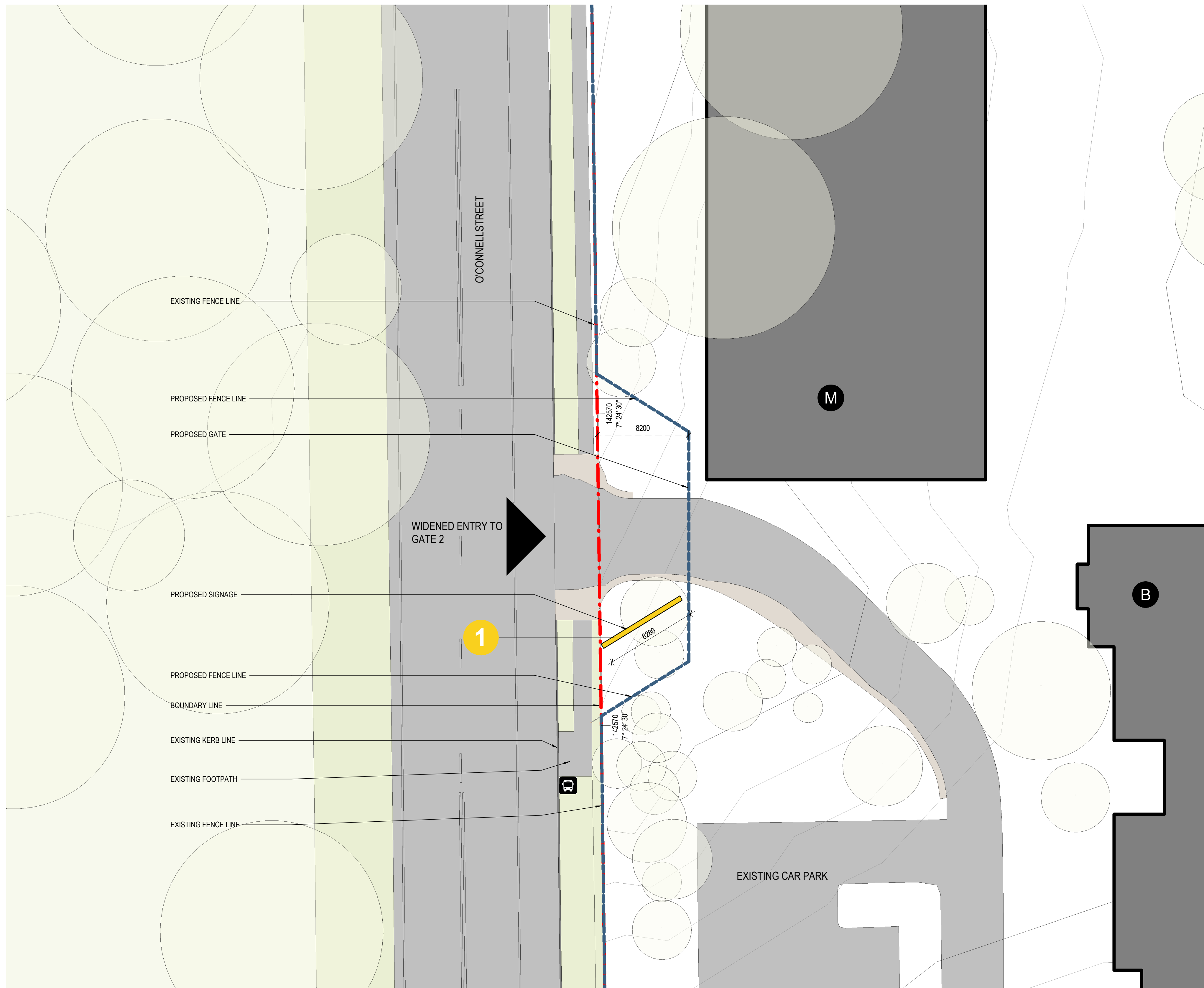
## SSDA

## SITE PLAN - PROPOSED

DWG # **DA0103** REV **C**

SCALE @ A1 As indicated





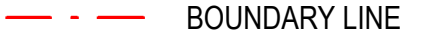
### LEGEND



### EXISTING PEDESTRIAN ACCESS



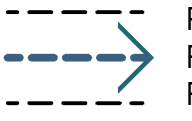
### EXISTING VEHICULAR ACCESS



BOUNDARY LINE



EXISTING BUILDING NAME



### PROPOSED VEHICULAR ROUTE CARPARK RECONFIGURATION

PROPOSED PEDESTRIAN  
PATH

## EXTENT OF SSD SCOPE



## PROPOSED CONSTRUCTION HUB



PROPOSED ROADS  
WALKWAYS AND  
RECONFIGURED CARPARK



## EXISTING ROADS, WALKWAYS AND CARPARKS



SIGN TYPE 1

## GRAY PUKSAND

**DISCLAIMER**

This document may not be secure, may be corrupted in transmission or due to software incompatibility and/or may be amended or altered by third parties after leaving Gray Puksand's possession

Gray Puksand is not responsible for and accepts no liability for such matters. Subject only to any conflicting provision within any prior binding agreement by Gray Puksand (which agreement may also contain additional conditions relating to this document and its use):

1. The content of this document is confidential and copyright in it belongs to Gray Puksand. They are permitted only to be opened, read and used by the addressee.

2. All users of this document must carry out all relevant investigations and must examine, take advice as required and satisfy themselves concerning the contents, correctness and sufficiency of the attachment and its contents for their purposes.

3. To the extent permitted by law, all conditions and warranties concerning this document or any use to which they may be put (whether as to quality, outcome, fitness, care, skill or otherwise) whether express or implied by statute, common law, equity, trade, custom or usage or otherwise are expressly excluded.

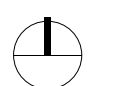
4. Any person using or relaying document releases indemnifies, and will keep indemnified, Gray Puksand against all claims, liabilities, loss, costs and expenses arising directly or indirectly out of or in connection with such use or reliance including without limitation any misrepresentation, error or defect in this document.

Contractors to use Architectural drawings for set out.  
Contractors to check & verify all Dimensions on Site prior to Construction/Fabrication.  
Figured Dimensions take precedence over Scaled Dimensions.  
Any Discrepancies should be immediately referred to the Architect.  
All work to comply with A.C.C. Statutory Authorities & Relevant Australian Standards.

NSW Nominated Architects Scott Moylan 7147 Craig Saltmarsh 6569

REV	DESCRIPTION	DATE
A	Issue For SSDA	19-12-21
B	Issued for SSDA	04-03-21

PROJECT NO	220090
DRAWN	PW
CHECKED	SS
APPROVED	BH



**TAFE NSW Construction  
Centre of Excellence**  
12-44 O'connell St, Kingswood  
NSW 2747

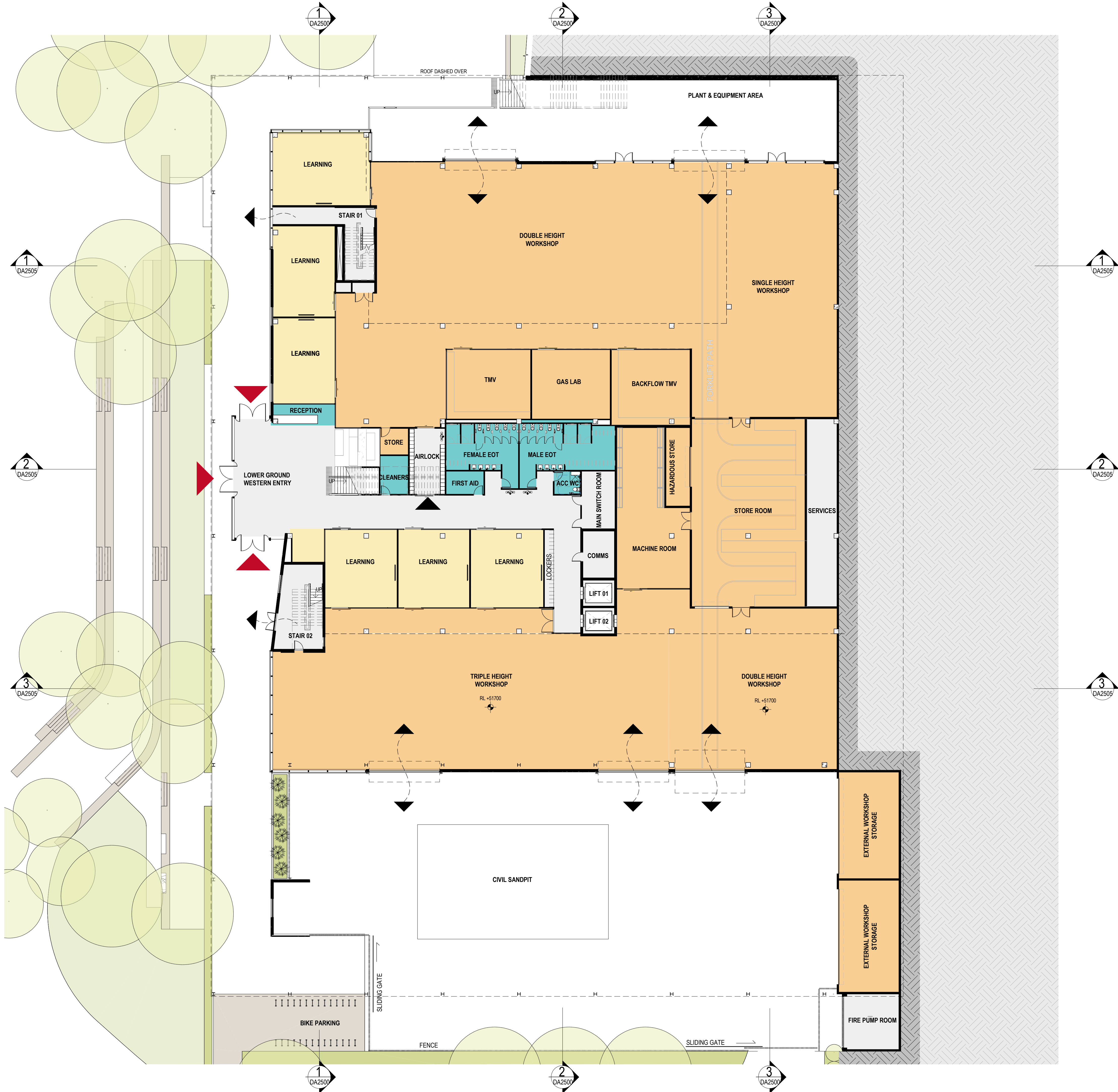
**PROPOSED ENTRY**

DWG # **DA0110** REV **B**

SCALE @ A1 As indicated



C:\Users\diaz\Documents\220090\_TAFE NSW WSCH\_Hub\_C21\_SSDA\_210310\_nlaaz\_GP-v1 11/03/2021 1:27:31 PM



## LEGEND

- WORKSHOP
- LEARNING SPACE
- WORKSPACE
- INDUSTRY ENGAGEMENT
- AMENITIES / OTHER
- CIRCULATION / SERVICES

## GRAY PUKSAND

**DISCLAIMER**  
This document may not be secure, may be corrupted in transmission or due to software incompatibility and/or may be amended or altered by third parties after leaving Gray Puksand's possession.  
Gray Puksand is not responsible for and accepts no liability for such matters. Subject only to any conflicting provision within any prior binding agreement, by Gray Puksand (which agreement may also contain additional conditions relating to this document and its use):  
1. The content of this document is confidential and copyright in it belongs to Gray Puksand. They are permitted only to be opened, read and used by the addressee.  
2. All users of this document must carry out all relevant investigations and must examine, take advice as required and satisfy themselves concerning the contents, correctness and sufficiency of the attachment and its contents for their purposes.  
3. To the extent permitted by law, all conditions and warranties concerning this document or any use to which they may be put (whether as to quality, outcome, fitness, care, skill or otherwise) whether express or implied by statute, common law, equity, trade, custom or usage or otherwise are expressly excluded.  
4. Any person using or relying on document releases indemnifies, and will keep indemnified, Gray Puksand against all claims, liabilities, loss, costs and expenses arising directly or indirectly out of or in connection with such use or reliance including without limitation any misrepresentation, error or defect in this document.  
Contractors to use Architectural drawings for set out.  
Contractors to check & verify all Dimensions on Site prior to Construction/Fabrication. Figured Dimensions take precedence over Scaled Dimensions.  
Any Discrepancies should be immediately referred to the Architect.  
All work to comply with N.C.C. Statutory Authorities & Relevant Australian Standards.  
NSW Nominated Architects Scott Moylan 7147 Craig Saltmarsh 6569



REV	DESCRIPTION	DATE
A	Test of Adequacy Submission	10-02-2021
B	Issue for SSDA	04-03-2021
C	Issue for SSDA	11-03-2021

PROJECT NO 220090  
DRAWN RD  
CHECKED SS  
APPROVED BH

**TAFE NSW Construction  
Centre of Excellence**  
12-44 O'connell St, Kingswood  
NSW 2747

## SSDA

**LOWER GROUND - GA FLOOR  
PLAN**

DWG # **DA1300** REV **C**

SCALE @ A1 1 : 200



C:\Users\diaz\Documents\220090\_TAFE NSW WSCH\_Hub\_C21\_SSDA\_210310\_diax\_GP.rvt 11/03/2021 1:27:41 PM



#### LEGEND

- WORKSHOP
- LEARNING SPACE
- WORKSPACE
- INDUSTRY ENGAGEMENT
- AMENITIES / OTHER
- CIRCULATION / SERVICES

## GRAY PUKSAND

**DISCLAIMER**  
This document may not be secure, may be corrupted in transmission or due to software incompatibility and/or may be amended or altered by third parties after leaving Gray Puksand's possession.

Gray Puksand is not responsible for and accepts no liability for such matters. Subject only to any conflicting provision within any prior binding agreement, by Gray Puksand (which agreement may also contain additional conditions relating to this document and its use).

1. The content of this document is confidential and copyright in it belongs to Gray Puksand. They are permitted only to be opened, read and used by the addressee.

2. All users of this document must carry out all relevant investigations and must examine, take advice as required and satisfy themselves concerning the contents, correctness and sufficiency of the attachment and its contents for their purposes.

3. To the extent permitted by law, all conditions and warranties concerning this document or any use to which they may be put (whether as to quality, outcome, fitness, care, skill or otherwise) whether express or implied by statute, common law, equity, trade, custom or usage or otherwise are expressly excluded.

4. Any person using or relying on document releases indemnifies, and will keep indemnified, Gray Puksand against all claims, liabilities, loss, costs and expenses arising directly or indirectly out of or in connection with such use or reliance including without limitation any misrepresentation, error or defect in this document.

Contractors to use Architectural drawings for set out.  
Contractors to check & verify all Dimensions on Site prior to Construction/Fabrication. Figured Dimensions take precedence over Scaled Dimensions.  
Any Discrepancies should be immediately referred to the Architect.  
All work to comply with N.C.C. Statutory Authorities & Relevant Australian Standards.

NSW Nominated Architects Scott Moylan 7147 Craig Saltmarsh 6569



REV	DESCRIPTION	DATE
A	Test of Adequacy Submission	10-02-2021
B	Issue for SSDA	04-03-2021
C	Issue for SSDA	11-03-2021

PROJECT NO 220090  
DRAWN RD  
CHECKED SS  
APPROVED BH

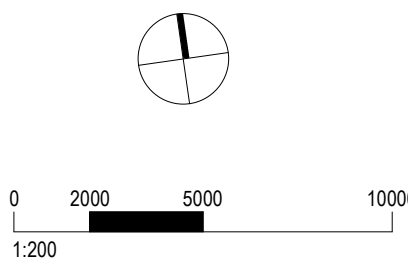
**TAFE NSW Construction  
Centre of Excellence**  
12-44 O'connell St, Kingswood  
NSW 2747

#### SSDA

#### UPPER GROUND - GA FLOOR PLAN

DWG # DA1310 REV C

SCALE @ A1 1 : 200





C:\Users\diaz\Documents\220090\_TAFE NSW WSCH\_Hub\_C21\_SSDA\_210310\_diaz\_GP-v1 11/03/2021 1:27:48 PM



LEGEND

- WORKSHOP
- LEARNING SPACE
- WORKSPACE
- INDUSTRY ENGAGEMENT
- AMENITIES / OTHER
- CIRCULATION / SERVICES

GRAY PUKSAND

**DISCLAIMER**  
This document may not be secure, may be corrupted in transmission or due to software incompatibility and/or may be amended or altered by third parties after leaving Gray Puksand's possession.  
Gray Puksand is not responsible for and accepts no liability for such matters. Subject only to any conflicting provision within any prior binding agreement, by Gray Puksand (which agreement may also contain additional conditions relating to this document and its use):  
1. The content of this document is confidential and copyright in it belongs to Gray Puksand. They are permitted only to be opened, read and used by the addressee.  
2. All users of this document must carry out all relevant investigations and must examine, take advice as required and satisfy themselves concerning the contents, correctness and sufficiency of the attachment and its contents for their purposes.  
3. To the extent permitted by law, all conditions and warranties concerning this document or any use to which they may be put (whether as to quality, outcome, fitness, care, skill or otherwise) whether express or implied by statute, common law, equity, trade, custom or usage or otherwise are expressly excluded.  
4. Any person using or relying on this document releases indemnifies, and will keep indemnified, Gray Puksand against all claims, liabilities, loss, costs and expenses arising directly or indirectly out of or in connection with such use or reliance including without limitation any misrepresentation, error or defect in this document.  
Contractors to use Architectural drawings for set out.  
Contractors to check & verify all Dimensions on Site prior to Construction/Fabrication. Figured Dimensions take precedence over Scaled Dimensions.  
Any Discrepancies should be immediately referred to the Architect.  
All work to comply with N.C.C. Statutory Authorities & Relevant Australian Standards.  
NSW Nominated Architects Scott Moylan 7147 Craig Saltmarsh 6569



REV	DESCRIPTION	DATE
A	Test of Adequacy Submission	10-02-2021
B	Issue for SSDA	04-03-2021
C	Issue for SSDA	11-03-2021

PROJECT NO 220090  
DRAWN RD  
CHECKED SS  
APPROVED BH

**TAFE NSW Construction  
Centre of Excellence**  
12-44 O'connell St, Kingswood  
NSW 2747

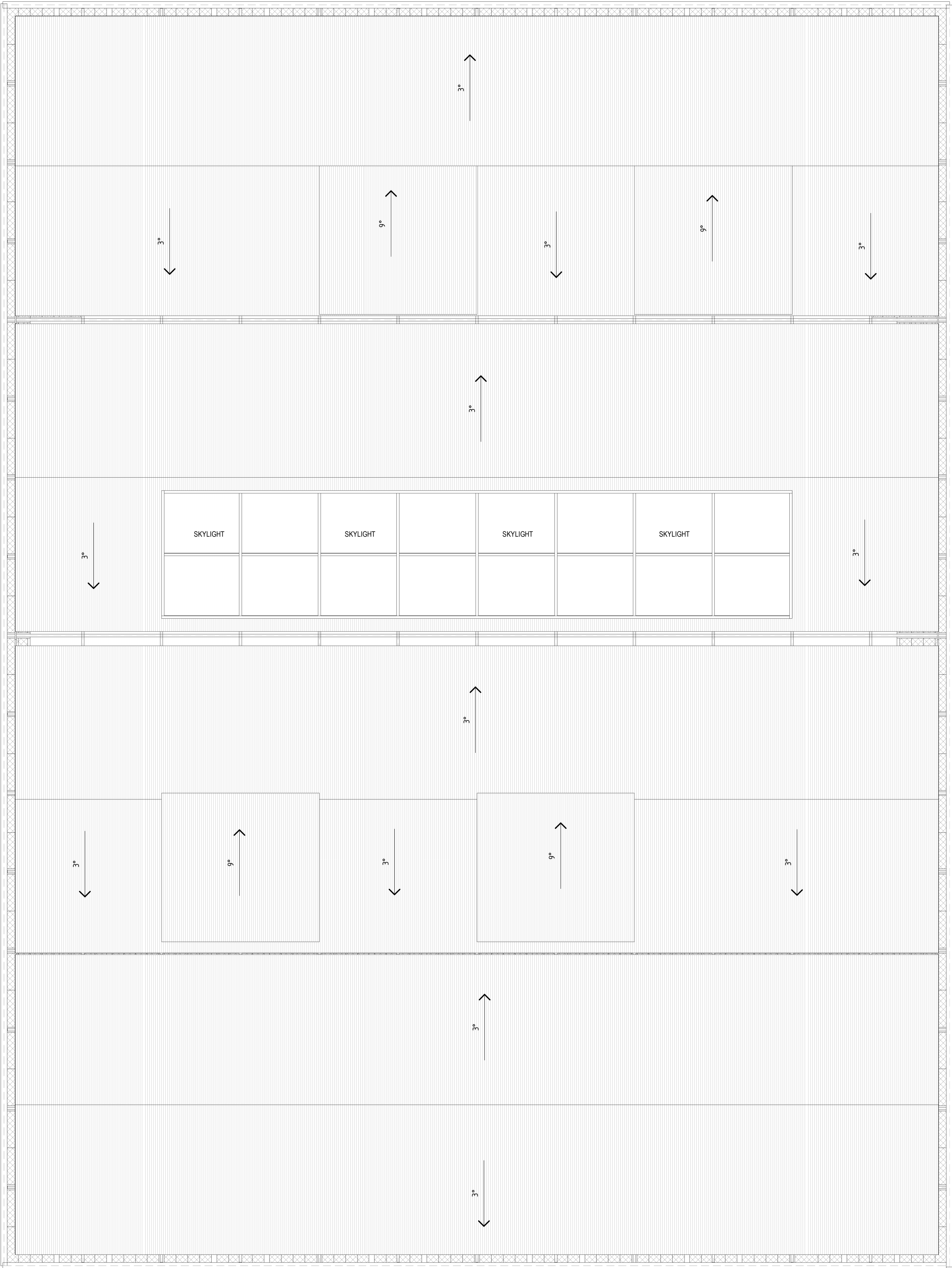
SSDA

LEVEL 1 - GA FLOOR PLAN

DWG # DA1320 REV C  
SCALE @ A1 1 : 200



C:\Users\hang\Documents\220990\_TAFE NSW WSCH\_Hub\_C21\_SSDA\_210310\_Jiang\_GP.rvt 11/03/2021 11:44:55 AM



# GRAY PUKSAND

**DISCLAIMER**

This document may not be secure, may be corrupted in transmission or due to software incompatibility and/or may be amended or altered by third parties after leaving Gray Puksand's possession

Gray Puksand is not responsible for and accepts no liability for such matters. Subject only to any conflicting provision within any prior binding agreement, by Gray Puksand (which agreement may also contain additional conditions relating to this document and its use):

1. The content of this document is confidential and copyright in it belongs to Gray Puksand. They are permitted only to be opened, read and used by the addressee.
2. All users of this document must carry out all relevant investigations and must examine, take advice as required and satisfy themselves concerning the contents, correctness and sufficiency of the attachment and its contents for their purposes.
3. To the extent permitted by law, all conditions and warranties concerning this document or any use to which they may be put (whether as to quality, outcome, fitness, care, skill or otherwise) whether express or implied by statute, common law, equity, trade, custom or usage or otherwise are expressly excluded.
4. Any person using or relying on this document releases indemnifies, and will keep indemnified, Gray Puksand against all claims, liabilities, loss, costs and expenses arising directly or indirectly out of or in connection with such use or reliance including without limitation any misrepresentation, error or defect in this document.

Contractors to use Architectural drawings for set out.  
Contractors to check & verify all Dimensions on Site prior to Construction/Fabrication.  
Figured Dimensions take precedence over Scaled Dimensions.  
Any Discrepancies should be immediately referred to the Architect.  
All work to comply with N.C.C. Statutory Authorities & Relevant Australian Standards.

NSW Nominated Architects Scott Moylan 7147 Craig Saltmarsh 6569



REV	DESCRIPTION	DATE
A	Test of Adequacy Submission	10-02-2021
B	Issue for SSDA	04-03-2021
C	Issue for SSDA	11-03-2021

PROJECT NO 220990  
DRAWN  
CHECKED  
APPROVED

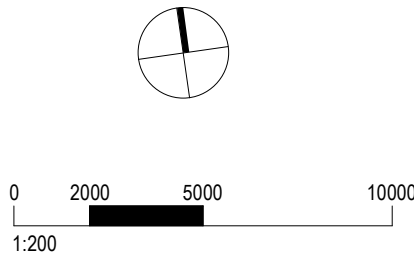


**TAFE NSW Construction  
Centre of Excellence**  
12-44 O'connell St, Kingswood  
NSW 2747

**SSDA**

**ROOF PLAN**

DWG # **DA1500** REV **C**  
SCALE @ A1 1 : 200

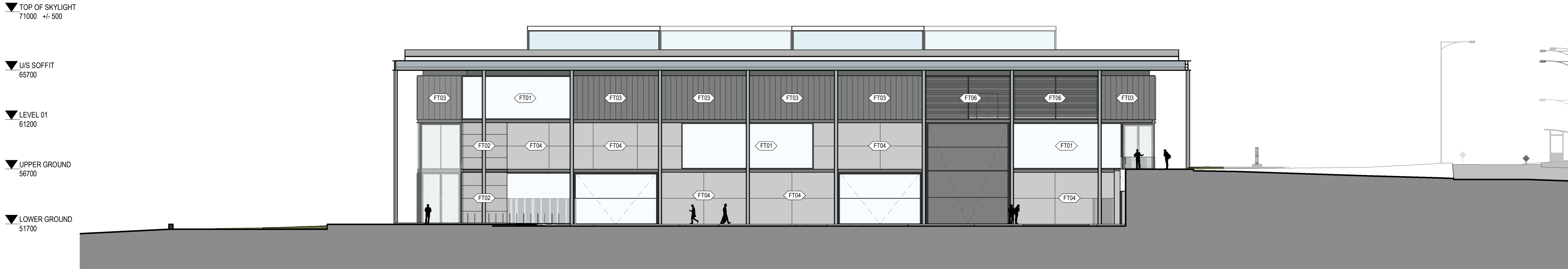




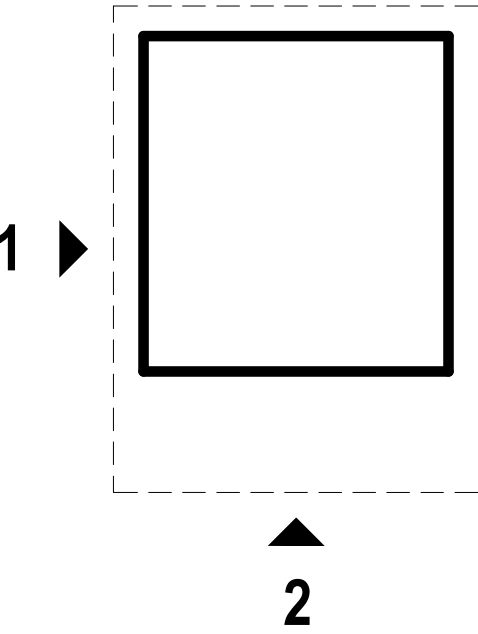
C:\Users\rdiaz\Documents\220090\_TAFE NSW WSCH\_Hub\_C21\_SSDA\_210310\_diax\_GFP.rvt 11/03/2021 1:27:38 PM



1 WEST ELEVATION  
A4003 1 : 200



2 SOUTH ELEVATION  
A4003 1 : 200



### FACADE TYPE LEGEND

TYPE MARK	DESCRIPTION
FT01	
FT02	PREFABRICATED FACADE PANELS CONCRETE OR SIMILAR
FT03	LIGHTWEIGHT STANDING SEAM METAL CLADDING
FT04	PREFABRICATED FACADE PANELS CONCRETE OR SIMILAR
FT05	ENTRY GLAZED CURTAIN WALL
FT06	LOUVRES

## GRAY PUKSAND

**DISCLAIMER**  
This document may not be secure, may be corrupted in transmission or due to software incompatibility and/or may be amended or altered by third parties after leaving Gray Puksand's possession.

Gray Puksand is not responsible for and accepts no liability for such matters. Subject only to any conflicting provision within any prior binding agreement, by Gray Puksand (which agreement may also contain additional conditions relating to this document and its use):

- The content of this document is confidential and copyright in it belongs to Gray Puksand. They are permitted only to be opened, read and used by the addressee.
- All users of this document must carry out all relevant investigations and must examine, take advice as required and satisfy themselves concerning the contents, correctness and sufficiency of the attachment and its contents for their purposes.
- To the extent permitted by law, all conditions and warranties concerning this document or any use to which they may be put (whether as to quality, outcome, fitness, care, skill or otherwise) whether express or implied by statute, common law, equity, trade, custom or usage or otherwise are expressly excluded.
- Any person using or relying on this document releases indemnifies, and will keep indemnified, Gray Puksand against all claims, liabilities, loss, costs and expenses arising directly or indirectly out of or in connection with such use or reliance including without limitation any misrepresentation, error or defect in this document.

Contractors to use Architectural drawings for set out.  
Contractors to check & verify all Dimensions on Site prior to Construction/Fabrication. Figured Dimensions take precedence over Scaled Dimensions.  
Any Discrepancies should be immediately referred to the Architect.  
All work to comply with N.C.C. Statutory Authorities & Relevant Australian Standards.

NSW Nominated Architects Scott Moylan 7147 Craig Saltmarsh 6569



REV	DESCRIPTION	DATE
A	Test of Adequacy Submission	10-02-2021
B	Issue for SSDA	04-03-2021
C	Issue for SSDA	11-03-2021

PROJECT NO	220090
DRAWN	RD
CHECKED	SS
APPROVED	BH

**TAFE NSW Construction  
Centre of Excellence**  
12-44 O'connell St, Kingswood  
NSW 2747

### SSDA

#### EXTERNAL ELEVATIONS

DWG #	DA2000	REV	C
-------	--------	-----	---

SCALE @ A1 As indicated

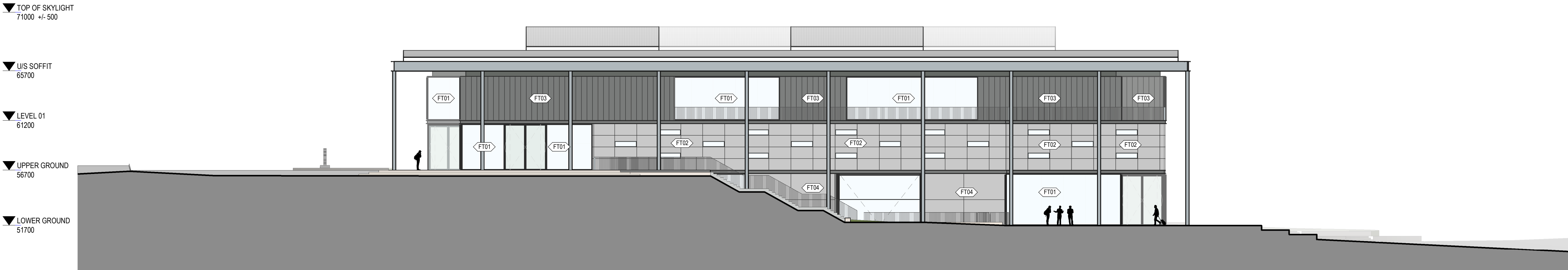




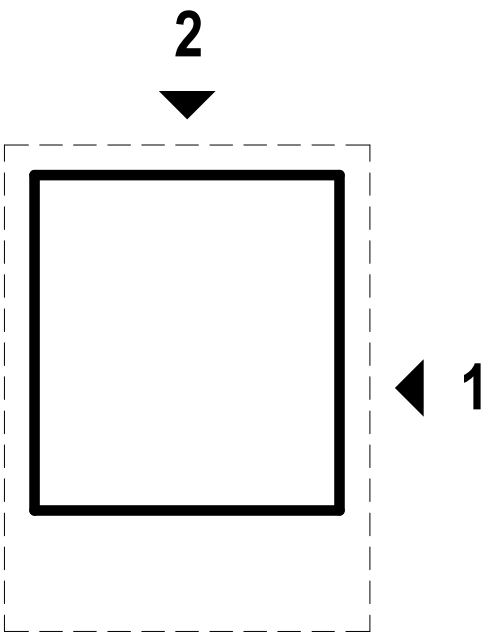
C:\Users\rdiaz\Documents\220090\_TAFE NSW WSCH\_Hub\_C21\_SSDA\_210310\_diax\_GFP.rvt 11/03/2021 1:28:06 PM



1 EAST ELEVATION  
A4003 1:200



2 NORTH ELEVATION  
A4003 1:200



FACADE TYPE LEGEND	
TYPE MARK	DESCRIPTION
FT01	
FT02	PREFABRICATED FACADE PANELS CONCRETE OR SIMILAR
FT03	LIGHTWEIGHT STANDING SEAM METAL CLADDING
FT04	PREFABRICATED FACADE PANELS CONCRETE OR SIMILAR
FT05	ENTRY GLAZED CURTAIN WALL
FT06	LOUVRES

## GRAY PUKSAND

**DISCLAIMER**

This document may not be secure, may be corrupted in transmission or due to software incompatibility and/or may be amended or altered by third parties after leaving Gray Puksand's possession.

Gray Puksand is not responsible for and accepts no liability for such matters. Subject only to any conflicting provision within any prior binding agreement, by Gray Puksand (which agreement may also contain additional conditions relating to this document and its use):

- The content of this document is confidential and copyright in it belongs to Gray Puksand. They are permitted only to be opened, read and used by the addressee.
- All users of this document must carry out all relevant investigations and must examine, take advice as required and satisfy themselves concerning the contents, correctness and sufficiency of the attachment and its contents for their purposes.
- To the extent permitted by law, all conditions and warranties concerning this document or any use to which they may be put (whether as to quality, outcome, fitness, care, skill or otherwise) whether express or implied by statute, common law, equity, trade, custom or usage or otherwise are expressly excluded.
- Any person using or relying on this document releases indemnifies, and will keep indemnified, Gray Puksand against all claims, liabilities, loss, costs and expenses arising directly or indirectly out of or in connection with such use or reliance including without limitation any misrepresentation, error or defect in this document.

Contractors to use Architectural drawings for set out.  
Contractors to check & verify all Dimensions on Site prior to Construction/Fabrication.  
Figured Dimensions take precedence over Scaled Dimensions.  
Any Discrepancies should be immediately referred to the Architect.  
All work to comply with N.C.C. Statutory Authorities & Relevant Australian Standards.

NSW Nominated Architects Scott Moylan 7147 Craig Saltmarsh 6569



REV	DESCRIPTION	DATE
A	Test of Adequacy Submission	10-02-2021
B	Issue for SSDA	04-03-2021
C	Issue for SSDA	11-03-2021

PROJECT NO	220090
DRAWN	RD
CHECKED	SS
APPROVED	BH

**TAFE NSW Construction  
Centre of Excellence**  
12-44 O'connell St, Kingswood  
NSW 2747

**SSDA**

**EXTERNAL ELEVATIONS**

DWG #	DA2005	REV	C
SCALE @ A1	As indicated		





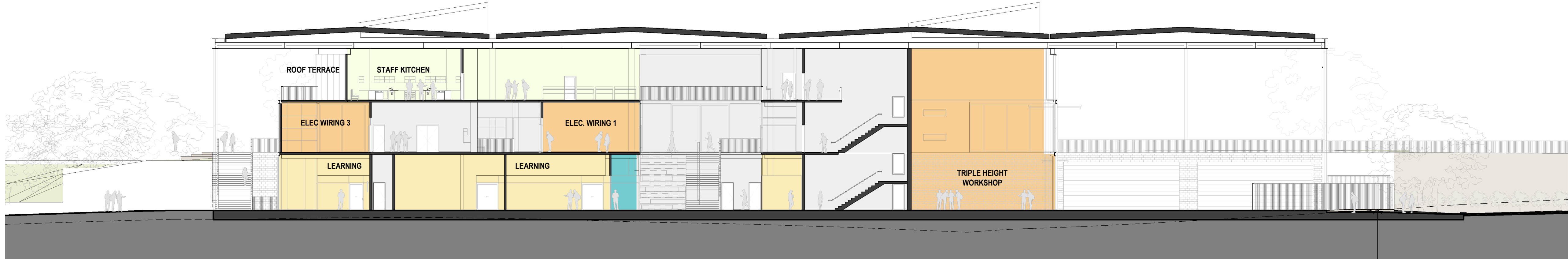
▼ TOP OF SKYLIGHT  
71000 +/- 500

▼ U/S SOFFIT  
65700

▼ LEVEL 01  
61200

▼ UPPER GROUND  
56700

▼ LOWER GROUND  
51700



1 NORTH-SOUTH SECTION  
DA1300 1:200

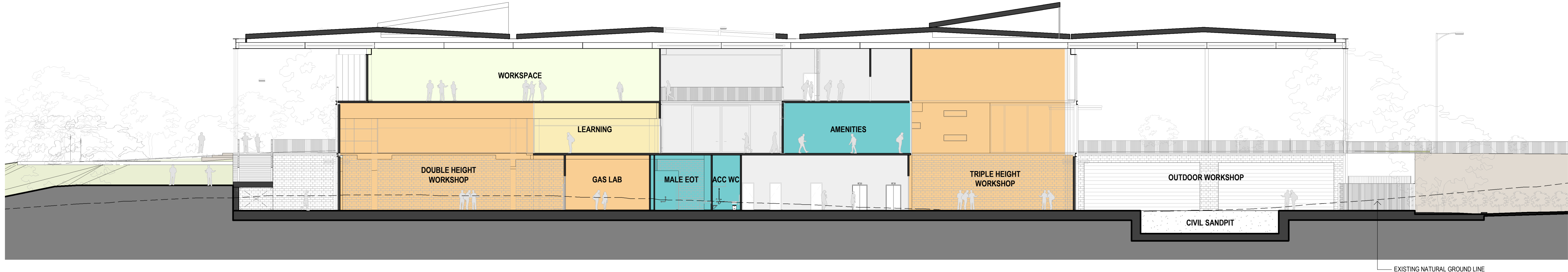
▼ TOP OF SKYLIGHT  
71000 +/- 500

▼ U/S SOFFIT  
65700

▼ LEVEL 01  
61200

▼ UPPER GROUND  
56700

▼ LOWER GROUND  
51700



2 NORTH-SOUTH SECTION  
DA1300 1:200

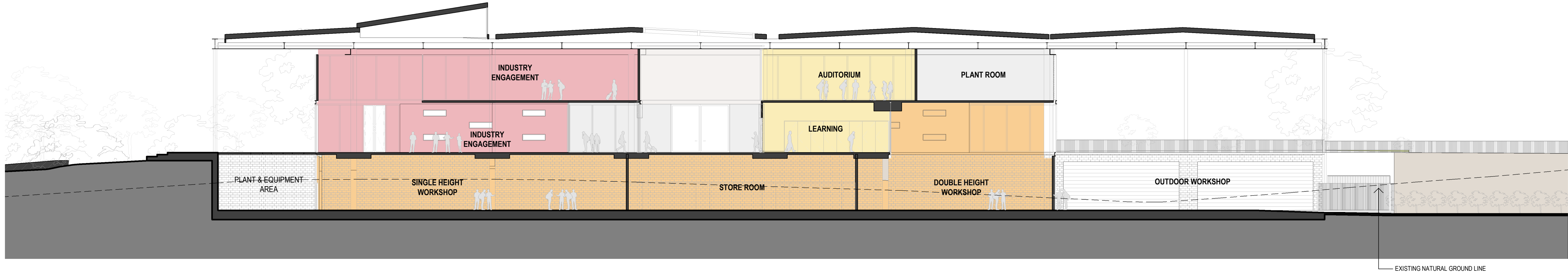
▼ TOP OF SKYLIGHT  
71000 +/- 500

▼ U/S SOFFIT  
65700

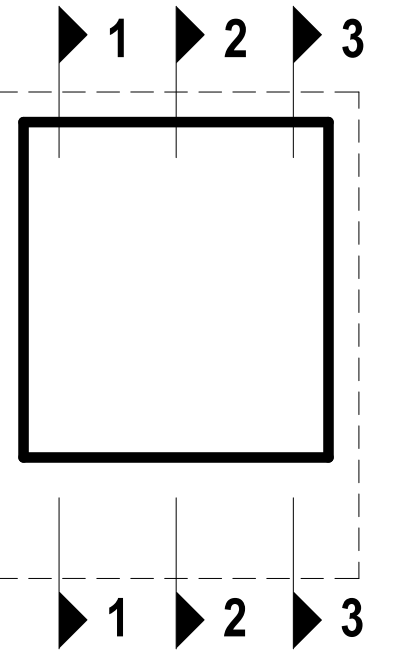
▼ LEVEL 01  
61200

▼ UPPER GROUND  
56700

▼ LOWER GROUND  
51700



3 NORTH-SOUTH SECTION  
DA1300 1:200



#### LEGEND

- WORKSHOP
- LEARNING SPACE
- WORKSPACE
- INDUSTRY ENGAGEMENT
- AMENITIES / OTHER
- CIRCULATION / SERVICES

## GRAY PUKSAND

**DISCLAIMER**  
This document may not be secure, may be corrupted in transmission or due to software incompatibility and/or may be amended or altered by third parties after leaving Gray Pukсанд's possession.  
Gray Pukсанд is not responsible for and accepts no liability for such matters. Subject only to any conflicting provision within any prior binding agreement, by Gray Pukсанд (which agreement may also contain additional conditions relating to this document and its use):  
1. The content of this document is confidential and copyright in it belongs to Gray Pukсанд. They are permitted only to be opened, read and used by the addressee.  
2. All users of this document must carry out all relevant investigations and must examine, take advice as required and satisfy themselves concerning the contents, correctness and sufficiency of the attachment and its contents for their purposes.  
3. To the extent permitted by law, all conditions and warranties concerning this document or any use to which they may be put (whether as to quality, outcome, fitness, care, skill or otherwise) whether express or implied by statute, common law, equity, trade, custom or usage or otherwise are expressly excluded.  
4. Any person using or relying on document releases indemnifies, and will keep indemnified, Gray Pukсанд against all claims, liabilities, loss, costs and expenses arising directly or indirectly out of or in connection with such use or reliance including without limitation any misrepresentation, error or defect in this document.  
Contractors to use Architectural drawings for set out.  
Contractors to check & verify all Dimensions on Site prior to Construction/Fabrication. Figured Dimensions take precedence over Scaled Dimensions.  
Any Discrepancies should be immediately referred to the Architect.  
All work to comply with N.C.C. Statutory Authorities & Relevant Australian Standards.  
NSW Nominated Architects Scott Moylan 7147 Craig Saltmarsh 6569



REV	DESCRIPTION	DATE
A	Test of Adequacy Submission	10-02-2021
B	Issue for SSDA	04-03-2021
C	Issue for SSDA	11-03-2021

PROJECT NO	220090
DRAWN	RD
CHECKED	SS
APPROVED	BH

**TAFE NSW Construction  
Centre of Excellence**  
12-44 O'connell St, Kingswood  
NSW 2747

#### SSDA

#### BUILDING SECTIONS

DWG #	DA2500	REV	C
SCALE @ A1	As indicated		

0 2000 5000 10000  
1:200



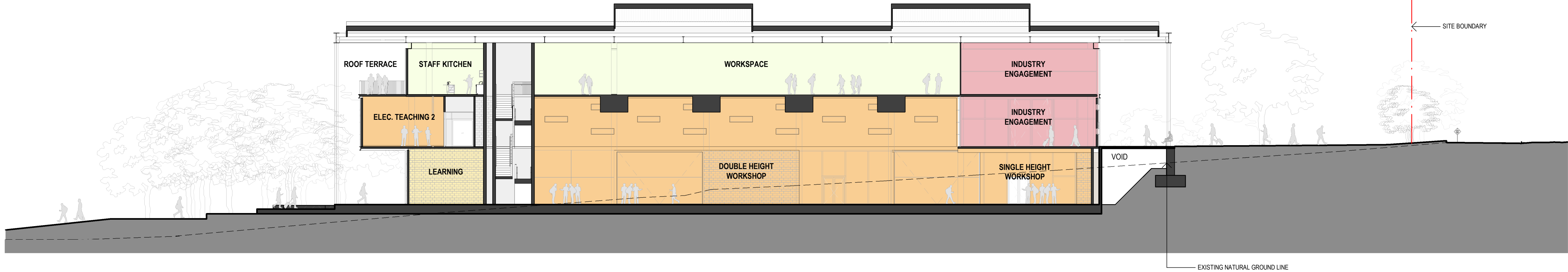
▼ TOP OF SKYLIGHT  
71000 +/- 500

▼ U/S SOFFIT  
65700

▼ LEVEL 01  
61200

▼ UPPER GROUND  
56700

▼ LOWER GROUND  
51700



1 EAST-WEST SECTION  
DA1300 1 : 200

▼ TOP OF SKYLIGHT  
71000 +/- 500

▼ U/S SOFFIT  
65700

▼ LEVEL 01  
61200

▼ UPPER GROUND  
56700

▼ LOWER GROUND  
51700



2 EAST-WEST SECTION  
DA1300 1 : 200

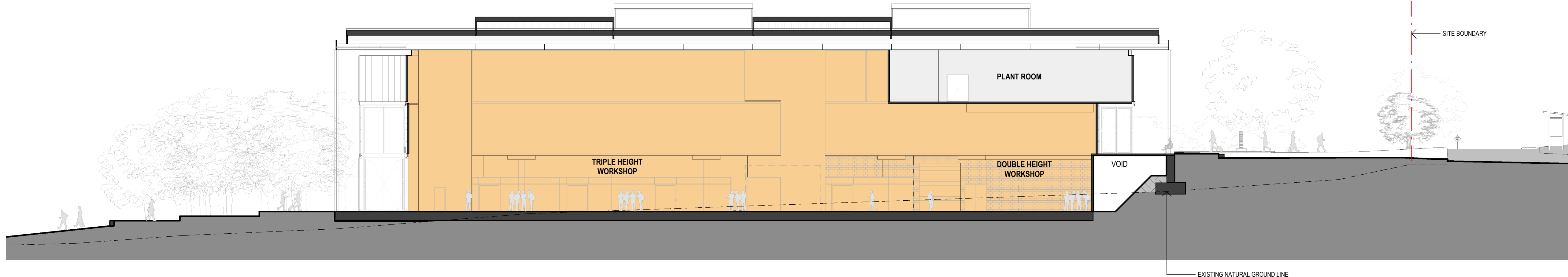
▼ TOP OF SKYLIGHT  
71000 +/- 500

▼ U/S SOFFIT  
65700

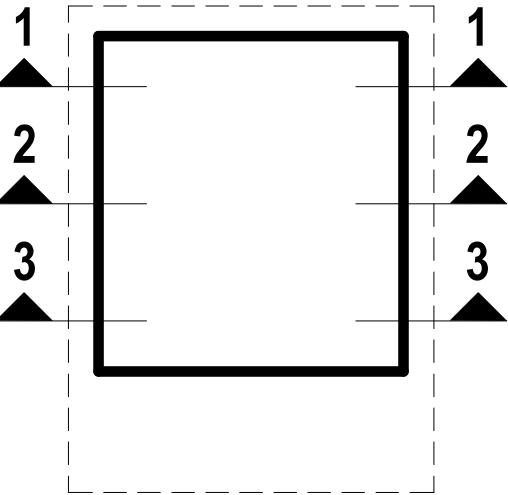
▼ LEVEL 01  
61200

▼ UPPER GROUND  
56700

▼ LOWER GROUND  
51700



3 EAST-WEST SECTION  
DA1300 1 : 200



#### LEGEND

- WORKSHOP
- LEARNING SPACE
- WORKSPACE
- INDUSTRY ENGAGEMENT
- AMENITIES / OTHER
- CIRCULATION / SERVICES

## GRAY PUKSAND

**DISCLAIMER**  
This document may not be secure, may be corrupted in transmission or due to software incompatibility and/or may be amended or altered by third parties after leaving Gray Puksand's possession.  
Gray Puksand is not responsible for and accepts no liability for such matters. Subject only to any conflicting provision within any prior binding agreement, by Gray Puksand (which agreement may also contain additional conditions relating to this document and its use):  
1. The content of this document is confidential and copyright in it belongs to Gray Puksand. They are permitted only to be opened, read and used by the addressee.  
2. All users of this document must carry out all relevant investigations and must examine, take advice as required and satisfy themselves concerning the contents, correctness and sufficiency of the attachment and its contents for their purposes.  
3. To the extent permitted by law, all conditions and warranties concerning this document or any use to which they may be put (whether as to quality, outcome, fitness, care, skill or otherwise) whether express or implied by statute, common law, equity, trade, custom or usage or otherwise are expressly excluded.  
4. Any person using or relying on document releases indemnifies, and will keep indemnified, Gray Puksand against all claims, liabilities, loss, costs and expenses arising directly or indirectly out of or in connection with such use or reliance including without limitation any misrepresentation, error or defect in this document.  
Contractors to use Architectural drawings for set out.  
Contractors to check & verify all Dimensions on Site prior to Construction/Fabrication. Figured Dimensions take precedence over Scaled Dimensions.  
Any Discrepancies should be immediately referred to the Architect.  
All work to comply with N.C.C. Statutory Authorities & Relevant Australian Standards.  
NSW Nominated Architects Scott Moylan 7147 Craig Saltmarsh 6569



REV	DESCRIPTION	DATE
A	Test of Adequacy Submission	10-02-2021
B	Issue for SSDA	04-03-2021
C	Issue for SSDA	11-03-2021

PROJECT NO	220090
DRAWN	RD
CHECKED	SS
APPROVED	BH

**TAFE NSW Construction  
Centre of Excellence**  
12-44 O'connell St, Kingswood  
NSW 2747

#### SSDA

#### BUILDING SECTIONS

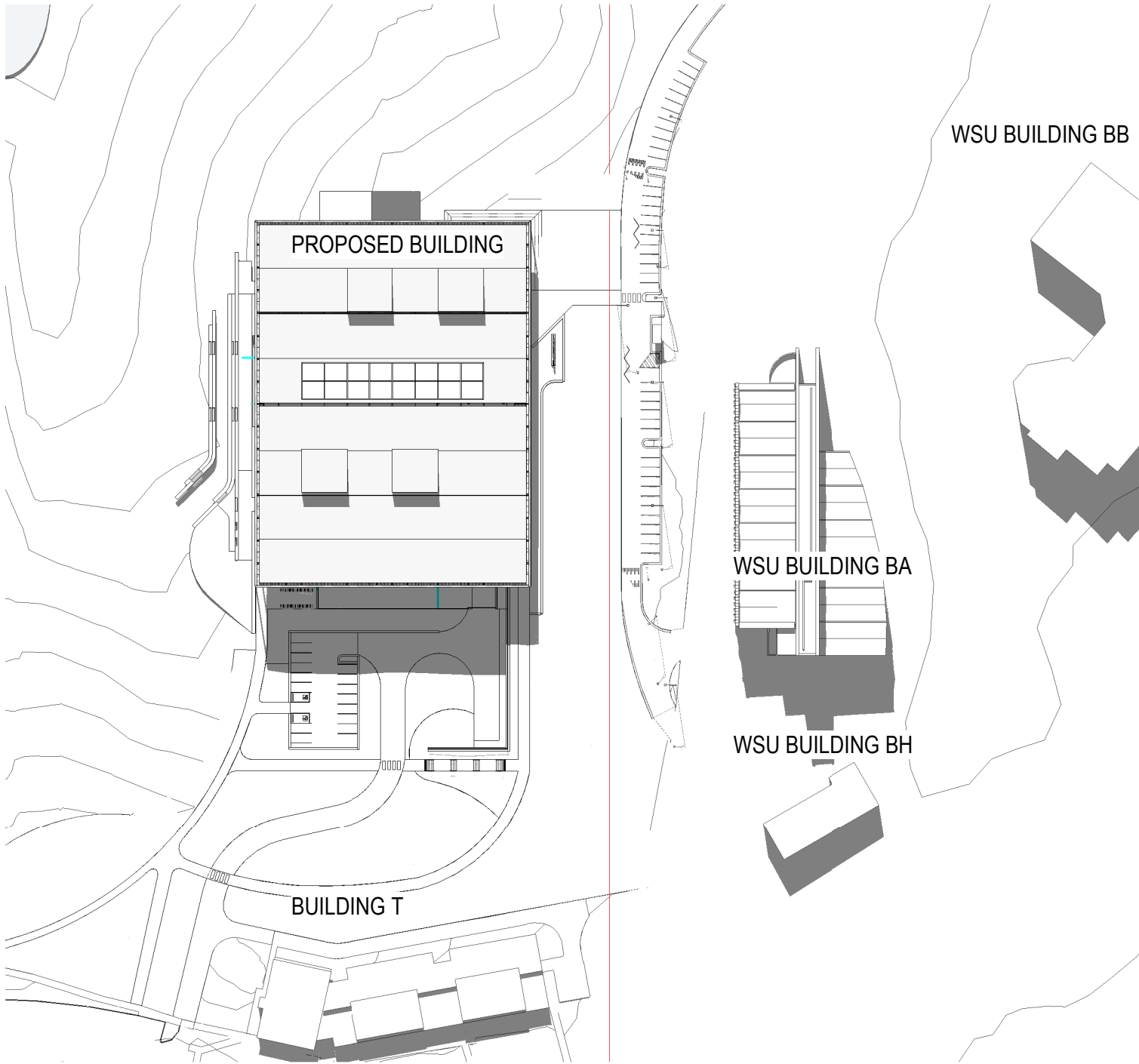
DWG #	DA2505	REV	C
SCALE @ A1	As indicated		

0 2000 5000 10000  
1:200

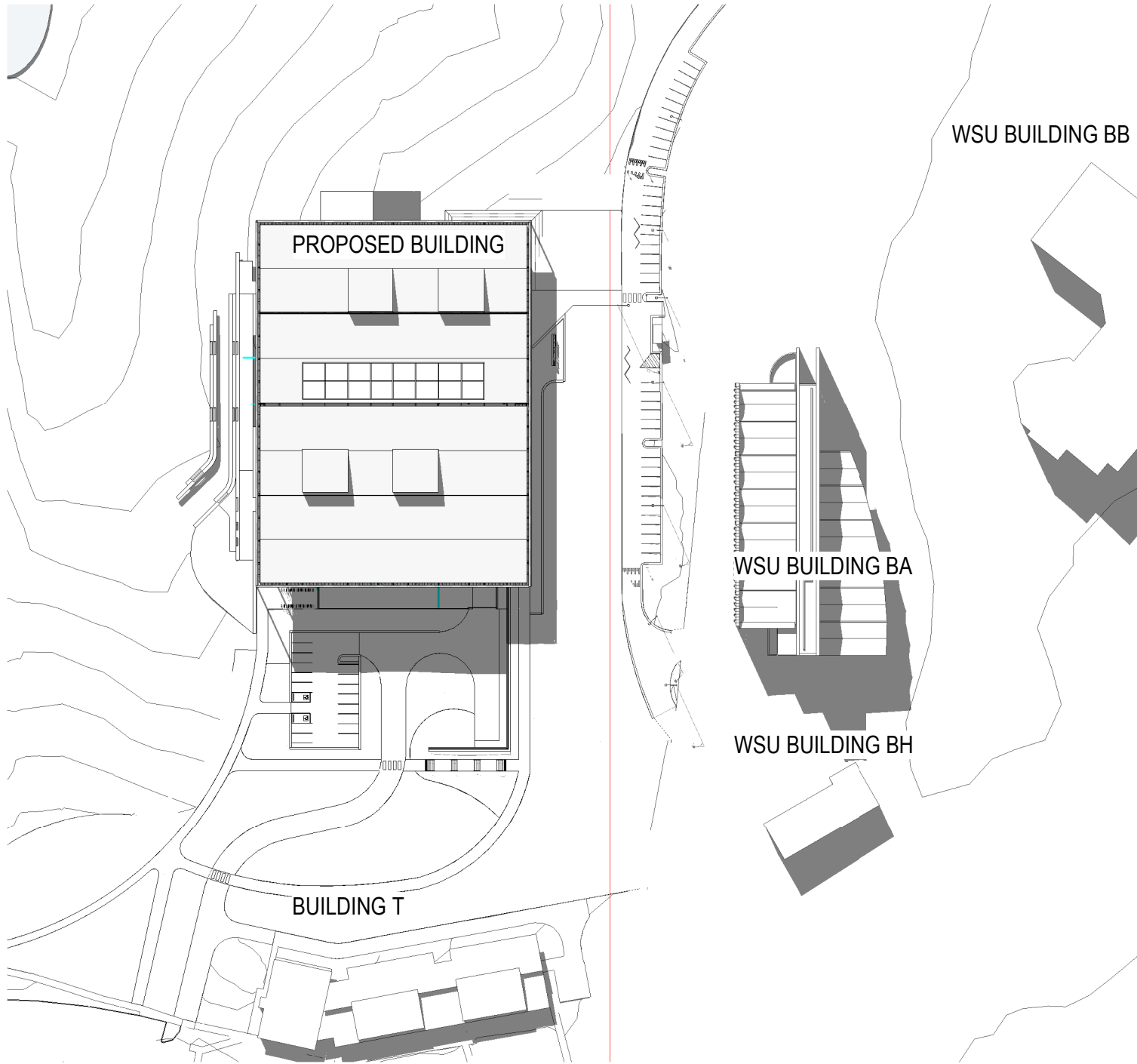




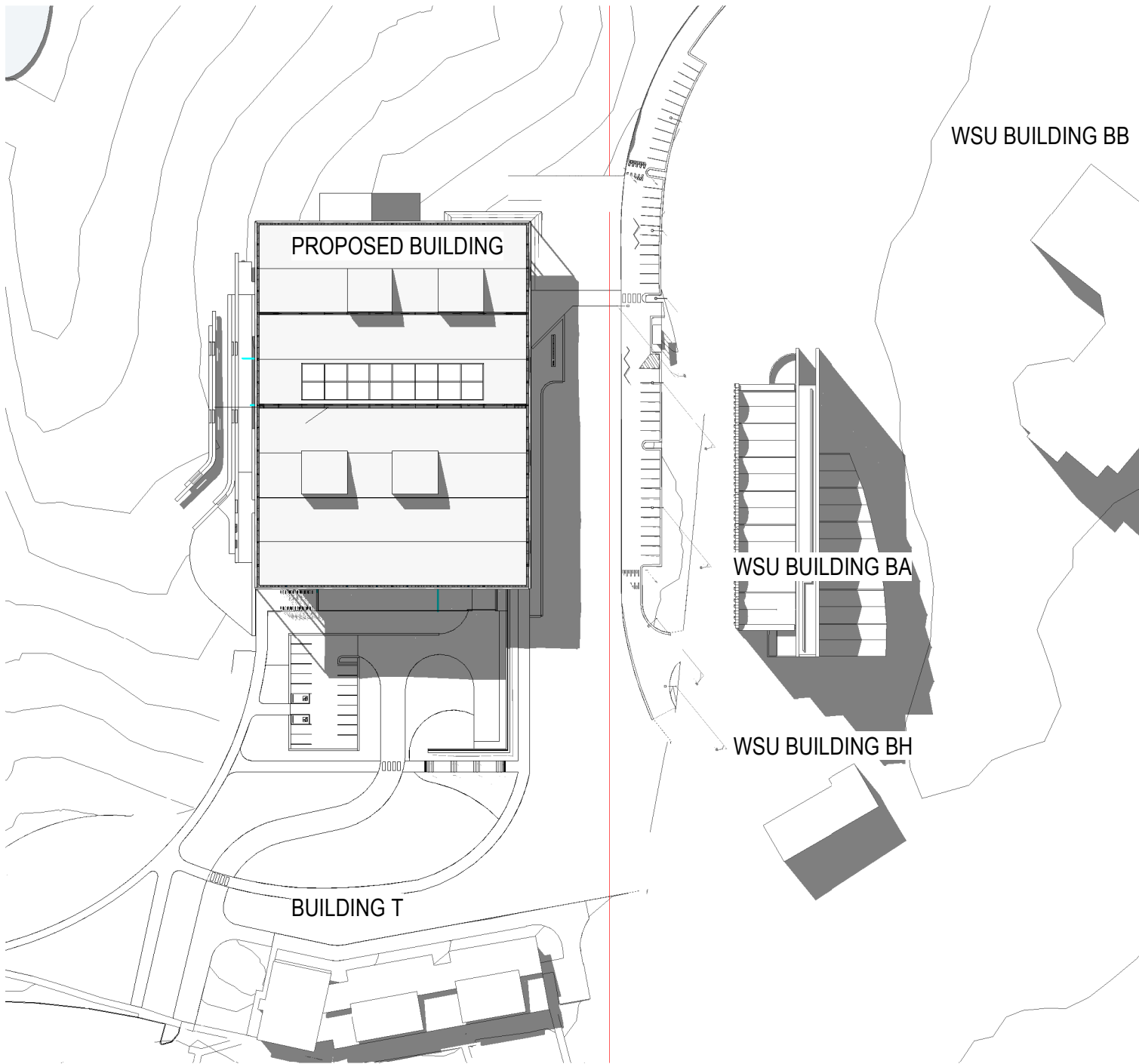




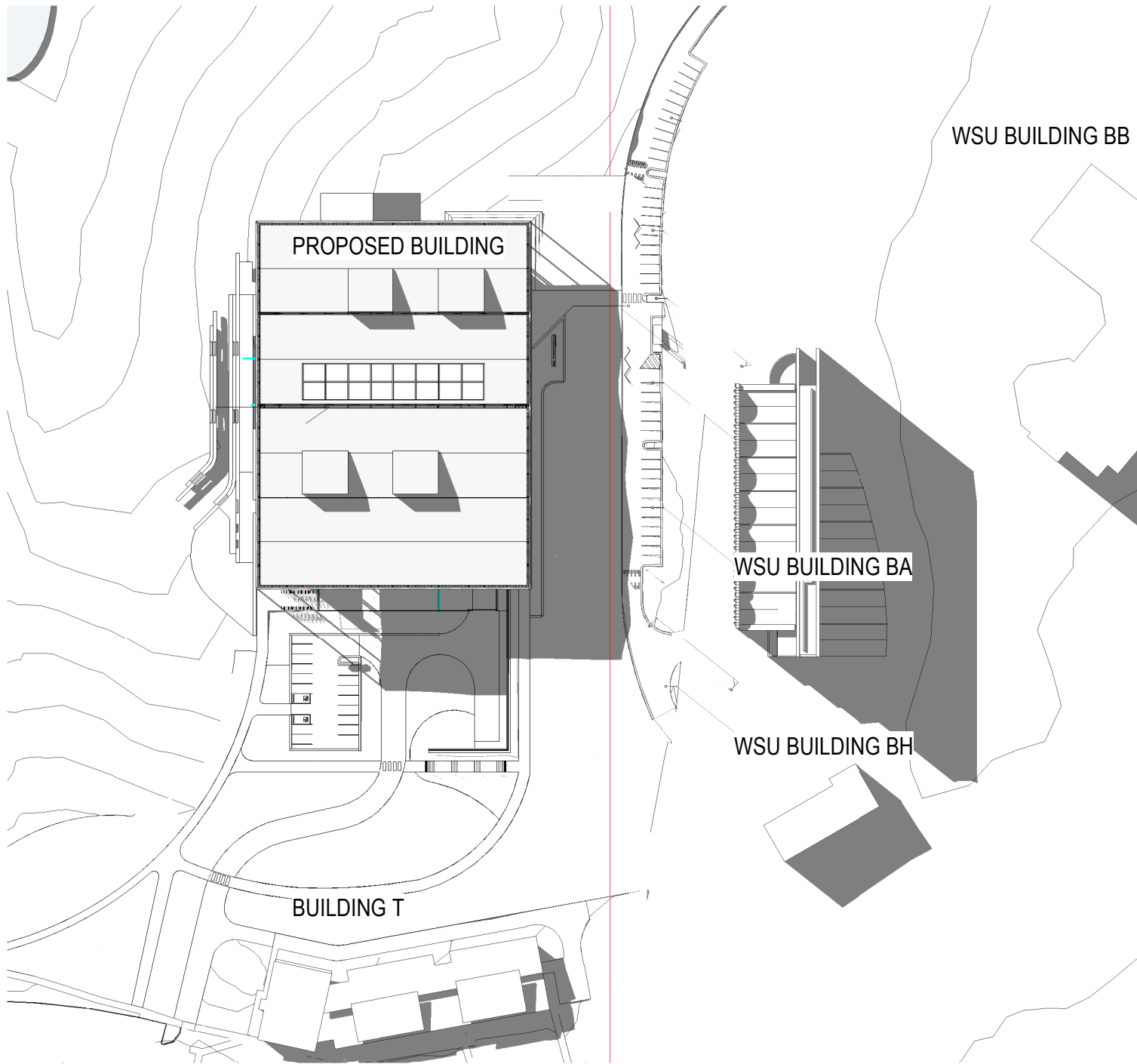
1 WINTER PROPOSED - 21ST JUNE 1300  
1 : 1500



2 WINTER PROPOSED - 21ST JUNE 1400  
1 : 1500



3 WINTER PROPOSED - 21ST JUNE 1500  
1 : 1500



4 WINTER PROPOSED - 21ST JUNE 1600  
1 : 1500

## GRAY PUKSAND

**DISCLAIMER**  
This document may not be secure, may be corrupted in transmission or due to software incompatibility and/or may be amended or altered by third parties after leaving Gray Puksand's possession.  
Gray Puksand is not responsible for and accepts no liability for such matters. Subject only to any conflicting provision within any prior binding agreement, by Gray Puksand (which agreement may also contain additional conditions relating to this document and its use):  
1. The content of this document is confidential and copyright in it belongs to Gray Puksand. They are permitted only to be opened, read and used by the addressee.  
2. All users of this document must carry out all relevant investigations and must examine, take advice as required and satisfy themselves concerning the contents, correctness and sufficiency of the attachment and its contents for their purposes.  
3. To the extent permitted by law, all conditions and warranties concerning this document or any use to which they may be put (whether as to quality, outcome, fitness, care, skill or otherwise) whether express or implied by statute, common law, equity, trade, custom or usage or otherwise are expressly excluded.  
4. Any person using or relying on this document releases indemnifies, and will keep indemnified, Gray Puksand against all claims, liabilities, loss, costs and expenses arising directly or indirectly out of or in connection with such use or reliance including without limitation any misrepresentation, error or defect in this document.  
Contractors to check & verify all Dimensions on Site prior to Construction/Fabrication. Figured Dimensions take precedence over Scaled Dimensions.  
Any Discrepancies should be immediately referred to the Architect.  
All work to comply with N.C.C. Statutory Authorities & Relevant Australian Standards.  
NSW Nominated Architects Scott Moylan 7147 Craig Saltmarsh 6569

REV	DESCRIPTION	DATE
A	Test of Adequacy Submission	10-02-21
B	Issued for SSDA	04-03-21
C	Issued for SSDA	11-03-21

PROJECT NO	220090
DRAWN	HA
CHECKED	PW
APPROVED	BH



**TAFE NSW Construction  
Centre of Excellence**  
12-44 O'Connell St, Kingswood  
NSW 2747

**SSDA**

**WINTER - SHADOW DIAGRAMS  
SHEET 2**

DWG # **DA4001** REV **C**

SCALE @ A1 1 : 1500

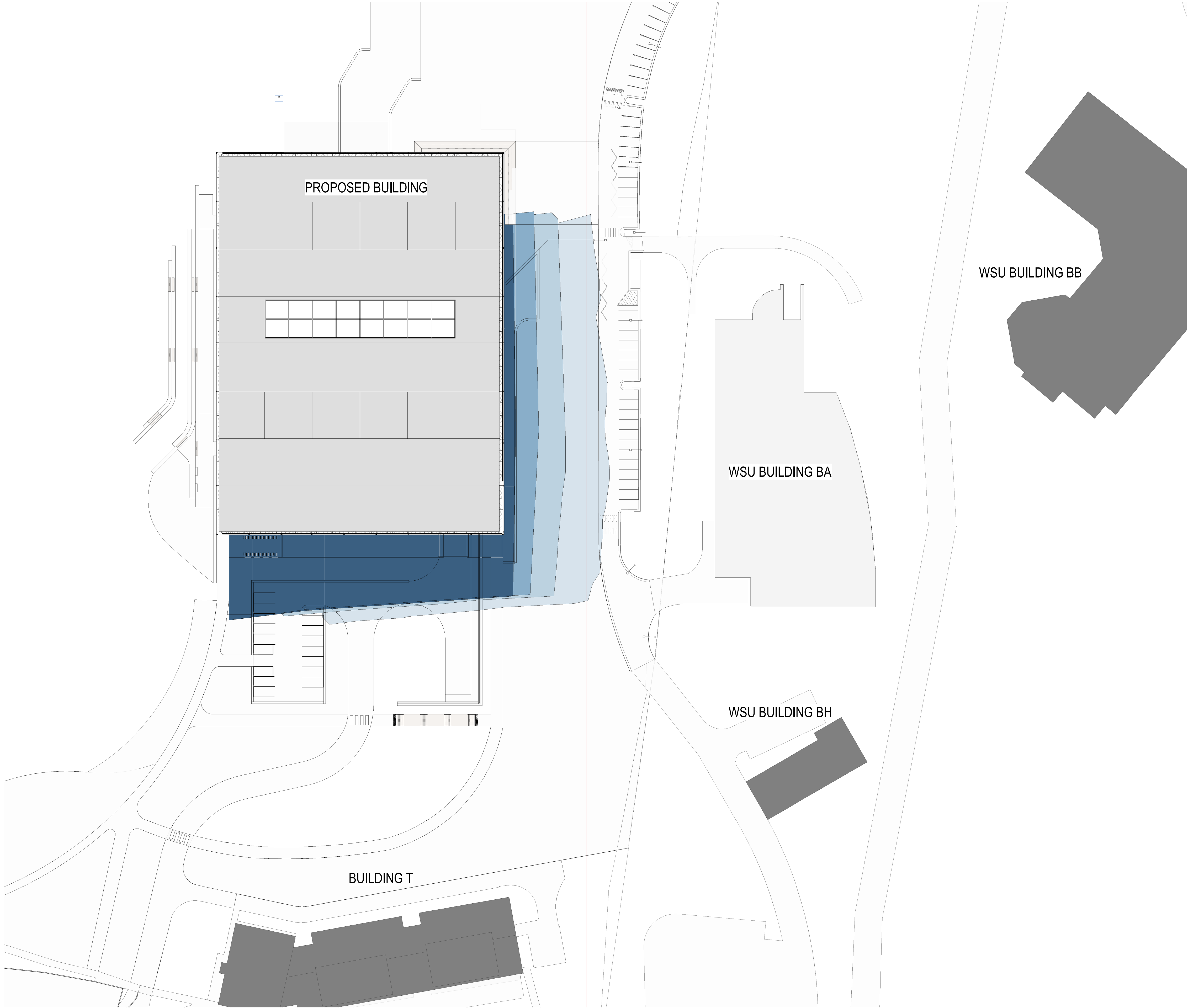


C:\Users\PMV\SH\Documents\220090\_TAFE NSW WSCH\_Site\_C21\_SSDA 210310\_p\walaRPPBP.nt 11/03/2021 1:09:33 PM

1

WINTER PROPOSED - 21ST JUNE 1200 - 1500

1 : 500



**LEGEND**

WINTER PROPOSED - 21ST JUNE 1200

WINTER PROPOSED - 21ST JUNE 1300

WINTER PROPOSED - 21ST JUNE 1400

WINTER PROPOSED - 21ST JUNE 1500

## GRAY PUKSAND

**DISCLAIMER**

This document may not be secure, may be corrupted in transmission or due to software incompatibility and/or may be amended or altered by third parties after leaving Gray Puksand's possession.

Gray Puksand is not responsible for and accepts no liability for such matters. Subject only to any conflicting provision within any prior binding agreement, by Gray Puksand (which agreement may also contain additional conditions relating to this document and its use):

- The content of this document is confidential and copyright in it belongs to Gray Puksand. They are permitted only to be opened, read and used by the addressee.
- All users of this document must carry out all relevant investigations and must examine, take advice as required and satisfy themselves concerning the contents, correctness and sufficiency of the attachment and its contents for their purposes.
- To the extent permitted by law, all conditions and warranties concerning this document or any use to which they may be put (whether as to quality, outcome, fitness, care, skill or otherwise) whether express or implied by statute, common law, equity, trade, custom or usage or otherwise are expressly excluded.
- Any person using or relying on this document releases indemnifies, and will keep indemnified, Gray Puksand against all claims, liabilities, loss, costs and expenses arising directly or indirectly out of or in connection with such use or reliance including without limitation any misrepresentation, error or defect in this document.

Contractors to use Architectural drawings for set out.  
Contractors to check & verify all Dimensions on Site prior to Construction/Fabrication.  
Figured Dimensions take precedence over Scaled Dimensions.  
Any Discrepancies should be immediately referred to the Architect.  
All work to comply with N.C.C. Statutory Authorities & Relevant Australian Standards.

NSW Nominated Architects Scott Moylan 7147 Craig Saltmarsh 6569

REV	DESCRIPTION	DATE
A	Test of Adequacy Submission	10-02-21
B	Issued for SSDA	04-03-21
C	Issued for SSDA	11-03-21

PROJECT NO  
DRAWN  
CHECKED  
APPROVED

220090  
HA  
PW  
BH



**TAFE NSW Construction  
Centre of Excellence**  
12-44 O'Connell St, Kingswood  
NSW 2747

**SSDA**

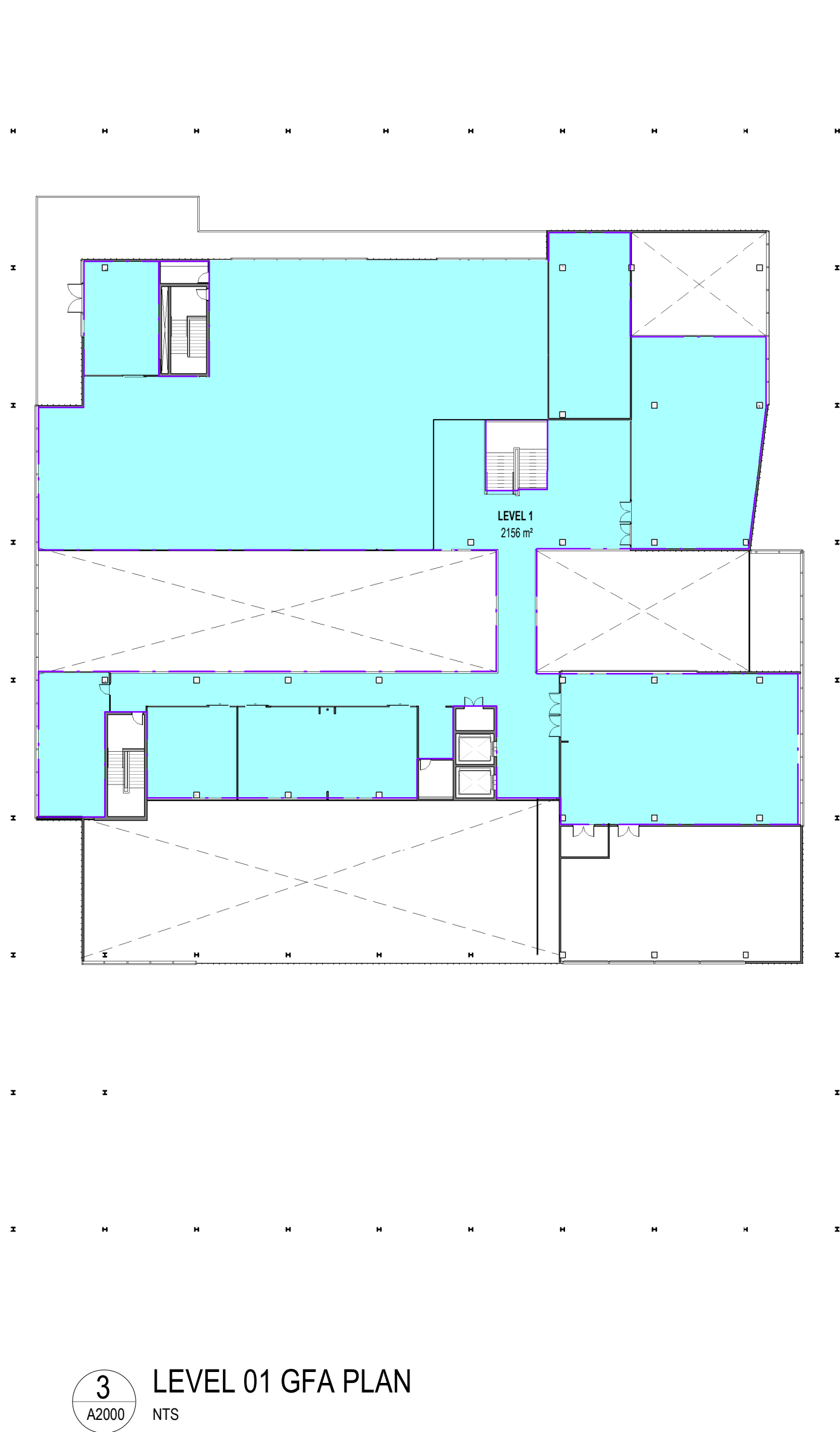
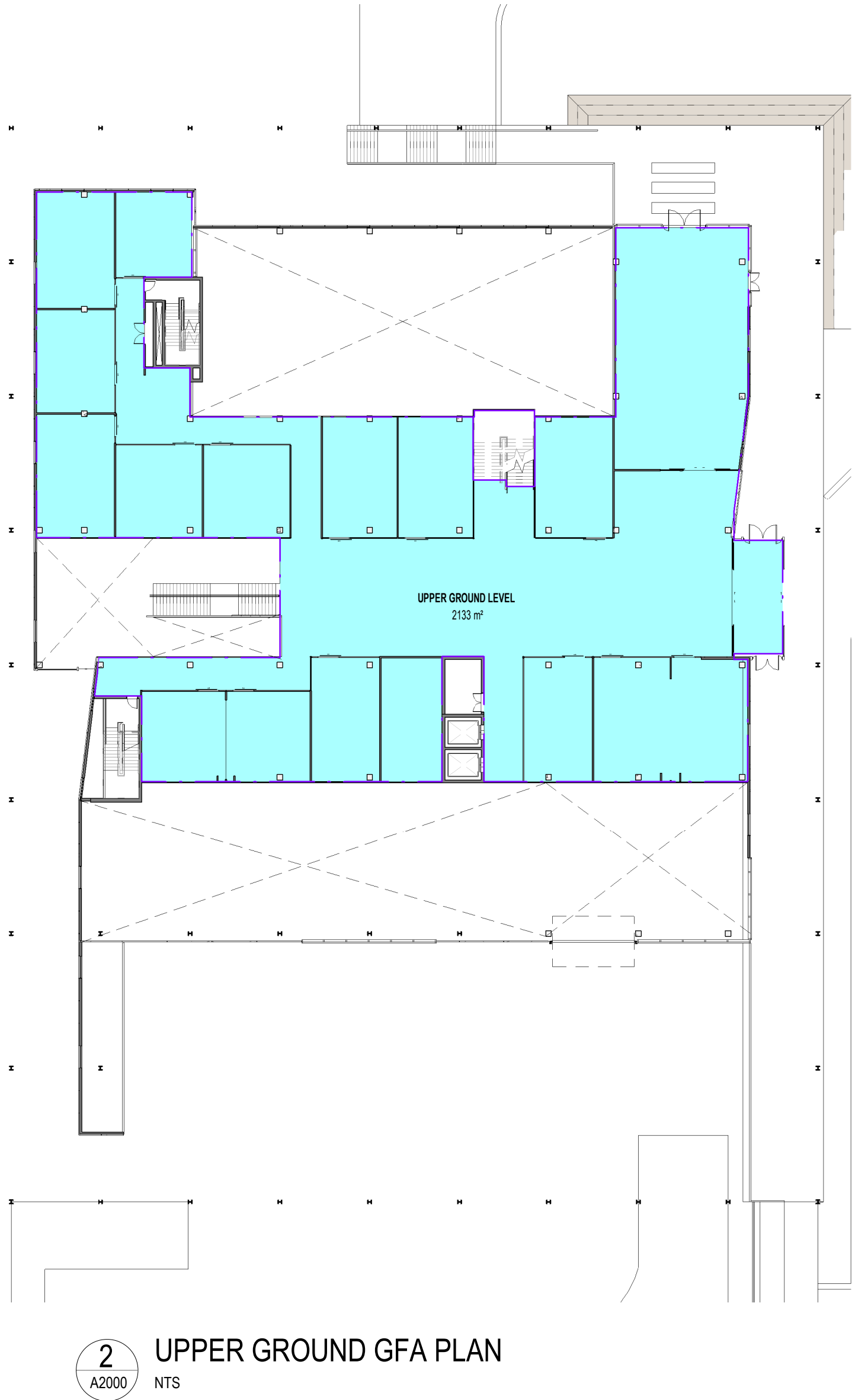
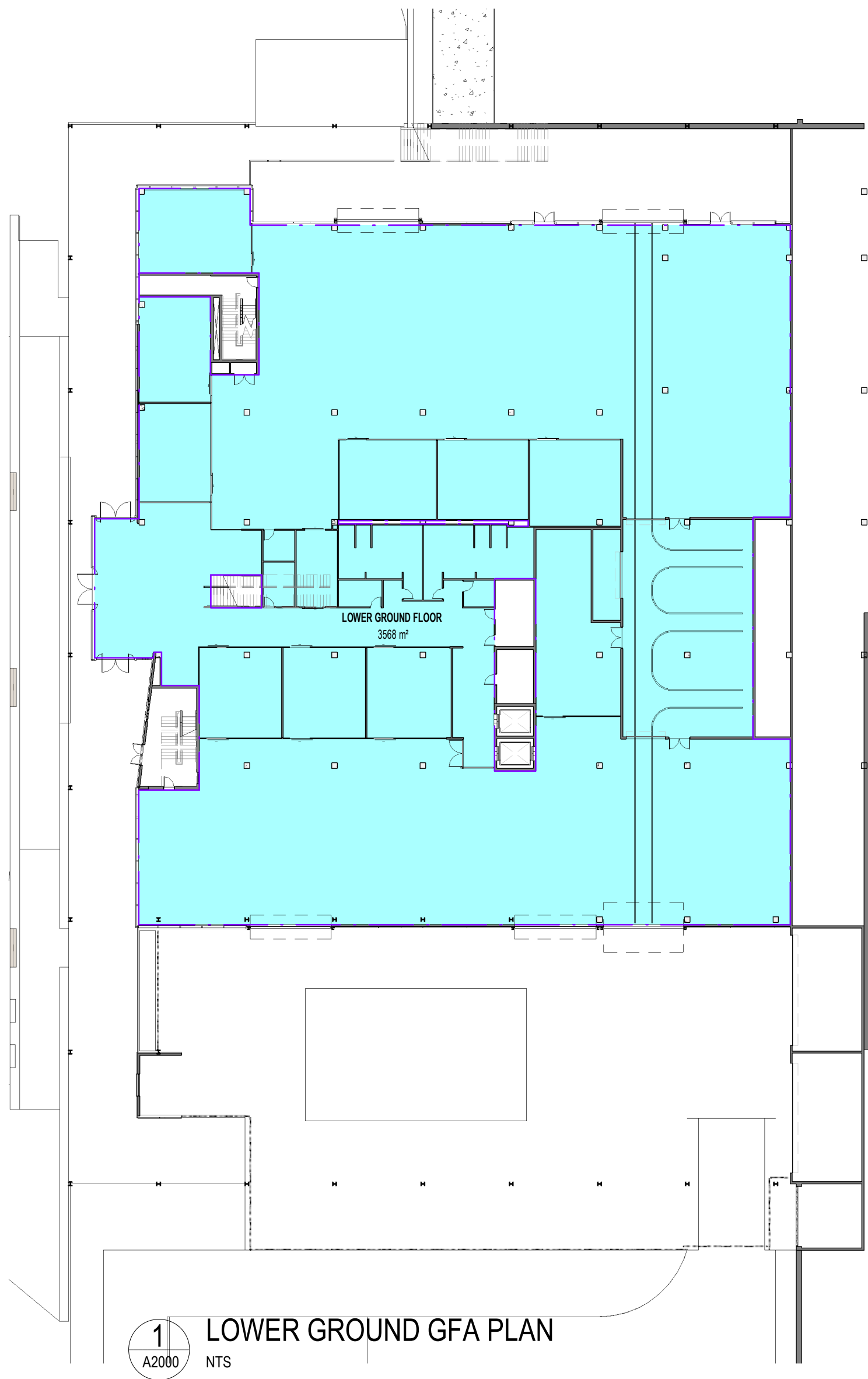
**WINTER SHADOW DIAGRAM  
IMPACT STUDY SHADOWS**

DWG # **DA4002** REV **C**

SCALE @ A1 As indicated



11/03/2021 11:45:35 AM C:\Users\hang\Documents\220990\_TAFE NSW WSCH\_Hub\_C21\_SSDA\_210310\_hang\_GP.rvt



GROSS FLOOR AREA (GFA)	
LEVEL	AREA
LEVEL 1	2156 m²
UPPER GROUND LEVEL	2133 m²
LOWER GROUND FLOOR	3568 m²
Grand total: 3	7857 m²

GROSS FLOOR AREA (EXTRACT FROM PENRITH LEP 2010)

GROSS FLOOR AREA MEANS THE SUM OF THE FLOOR AREA OF EACH FLOOR OF A BUILDING MEASURED FROM THE INTERNAL FACE OF EXTERNAL WALLS, OR FROM THE INTERNAL FACE OF WALLS SEPARATING THE BUILDING FROM ANY OTHER BUILDING, MEASURED AT A HEIGHT OF 1.4 METRES ABOVE THE FLOOR, AND INCLUDES—  
(A) THE AREA OF A MEZZANINE, AND  
(B) HABITABLE ROOMS IN A BASEMENT OR AN ATTIC, AND  
(C) ANY SHOP, AUDITORIUM, CINEMA, AND THE LIKE, IN A BASEMENT OR ATTIC, BUT EXCLUDES—  
(D) ANY AREA FOR COMMON VERTICAL CIRCULATION, SUCH AS LIFTS AND STAIRS, AND  
(E) ANY BASEMENT—  
(I) STORAGE, AND  
(II) VEHICULAR ACCESS, LOADING AREAS, GARBAGE AND SERVICES, AND  
(F) PLANT ROOMS, LIFT TOWERS AND OTHER AREAS USED EXCLUSIVELY FOR MECHANICAL SERVICES OR DUCTING, AND  
(G) CAR PARKING TO MEET ANY REQUIREMENTS OF THE CONSENT AUTHORITY (INCLUDING ACCESS TO THAT CAR PARKING), AND  
(H) ANY SPACE USED FOR THE LOADING OR UNLOADING OF GOODS (INCLUDING ACCESS TO IT), AND  
(I) TERRACES AND BALCONIES WITH OUTER WALLS LESS THAN 1.4 METRES HIGH, AND  
(J) VOIDS ABOVE A FLOOR AT THE LEVEL OF A STOREY OR STOREY ABOVE.

GRAY PUKSAND

**DISCLAIMER**  
This document may not be secure, may be corrupted in transmission or due to software incompatibility and/or may be amended or altered by third parties after leaving Gray Puksand's possession.  
Gray Puksand is not responsible for and accepts no liability for such matters. Subject only to any conflicting provision within any prior binding agreement, by Gray Puksand (which agreement may also contain additional conditions relating to this document and its use).  
1. The content of this document is confidential and copyright in it belongs to Gray Puksand. They are permitted only to be opened, read and used by the addressee.  
2. All users of this document must carry out all relevant investigations and must examine, take advice as required and satisfy themselves concerning the contents, correctness and sufficiency of the attachment and its contents for their purposes.  
3. To the extent permitted by law, all conditions and warranties concerning this document or any use to which they may be put (whether as to quality, outcome, fitness, care, skill or otherwise) whether express or implied by statute, common law, equity, trade, custom or usage or otherwise are expressly excluded.  
4. Any person using or relying document releases indemnifies, and will keep indemnified, Gray Puksand against all claims, liabilities, loss, costs and expenses arising directly or indirectly out of or in connection with such use or reliance including without limitation any misrepresentation, error or defect in this document.  
Contractors to use Architectural drawings for set out.  
Contractors to check & verify all Dimensions on Site prior to Construction/Fabrication. Figured Dimensions take precedence over Scaled Dimensions.  
Any Discrepancies should be immediately referred to the Architect.  
All work to comply with N.C.C. Statutory Authorities & Relevant Australian Standards.  
NSW Nominated Architects Scott Moylan 7147 Craig Saltmarsh 6569



REV	DESCRIPTION	DATE
A	Test of Adequacy Submission	10-02-2021
B	Issue for SSDA	04-03-2021
C	Issue for SSDA	11-03-2021

PROJECT NO	220090
DRAWN	RD
CHECKED	SS
APPROVED	BH

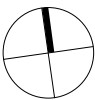


**TAFE NSW Construction**  
**Centre of Excellence**  
12-44 O'connell St, Kingswood  
NSW 2747

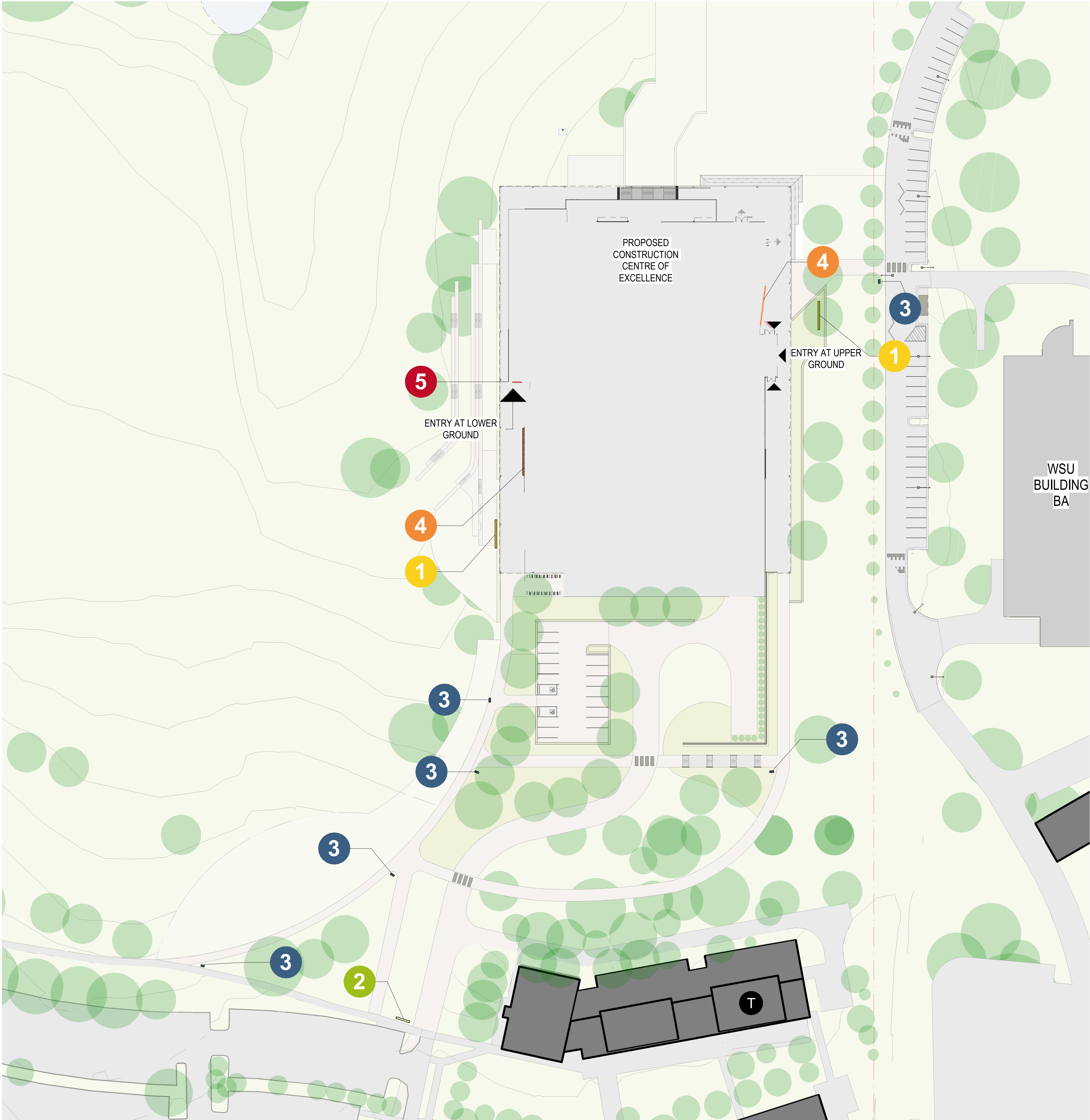
SSDA

GFA PLANS

DWG #	DA4500	REV	C
SCALE @ A1	As indicated		







- LEGEND
- 1

SIGN TYPE 1
- 2

SIGN TYPE 2
- 3

SIGN TYPE 3
- 4

SIGN TYPE 4 (WALL MOUNTED)
- 5

SIGN TYPE 5 (WALL MOUNTED)

GRAY PUKSAND

**DISCLAIMER**

This document may not be secure, may be corrupted in transmission or due to software incompatibility and/or may be amended or altered by third parties after leaving Gray Puksand's possession.

Gray Puksand is not responsible for and accepts no liability for such matters. Subject only to any conflicting provision within any prior binding agreement, by Gray Puksand (which agreement may also contain additional conditions relating to this document and its use):

1. The content of this document is confidential and copyright in it belongs to Gray Puksand. They are permitted only to be opened, read and used by the addressee.

2. All users of this document must carry out all relevant investigations and must examine, take advice as required and satisfy themselves concerning the contents, correctness and sufficiency of the attachment and its contents for their purposes.

3. To the extent permitted by law, all conditions and warranties concerning this document or any use to which they may be put (whether as to quality, outcome, fitness, care, skill or otherwise) whether express or implied by statute, common law, equity, trade, custom or usage or otherwise are expressly excluded.

4. Any person using or relying on this document releases indemnifies, and will keep indemnified, Gray Puksand against all claims, liabilities, loss, costs and expenses arising directly or indirectly out of or in connection with such use or reliance including without limitation any misrepresentation, error or defect in this document.

Contractors to use Architectural drawings for set out.  
Contractors to check & verify all Dimensions on Site prior to Construction/Fabrication.  
Figured Dimensions take precedence over Scaled Dimensions.  
Any Discrepancies should be immediately referred to the Architect.  
All work to comply with N.C.C. Statutory Authorities & Relevant Australian Standards.

NSW Nominated Architects Scott Moylan 7147 Craig Saltmarsh 6569

REV	DESCRIPTION	DATE
A	Test of Adequacy Submission	10-02-21
B	Issued for SSDA	04-03-21
C	Issued for SSDA	11-03-21

PROJECT NO	220090
DRAWN	PW
CHECKED	SW
APPROVED	BH

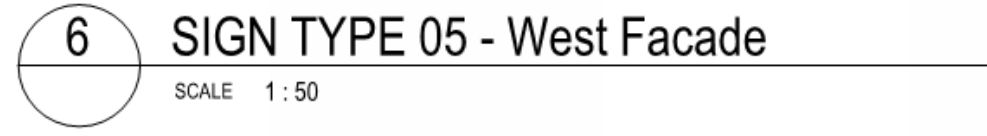
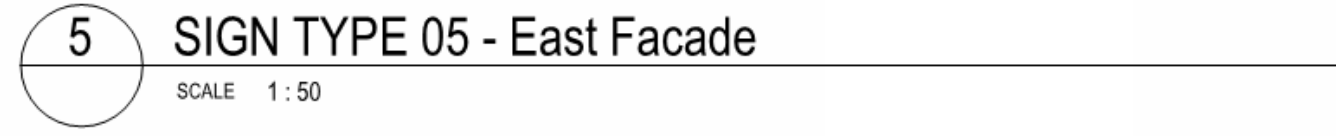
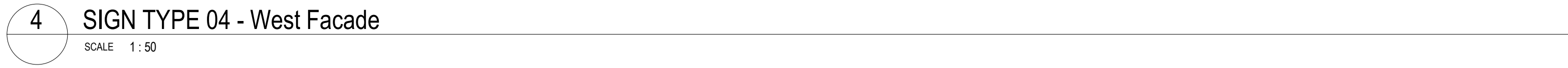
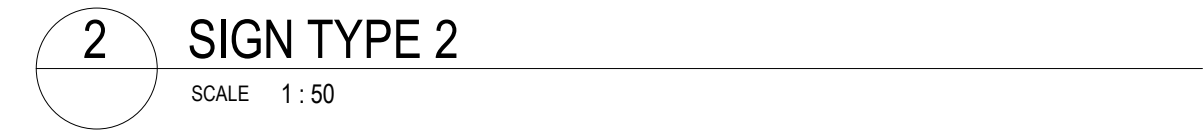
**TAFE NSW Construction  
Centre of Excellence**  
12-44 O'Connell St, Kingswood  
NSW 2747

SSDA

SITE PLAN - SIGNAGE LOCATION

DWG #	DA5000	REV	C
SCALE @ A1	1 : 500		





NSW Nominated Architects Scott Moylan 7147 Craig Saltmarsh 6569

SCALE @ A1 1 : 50