

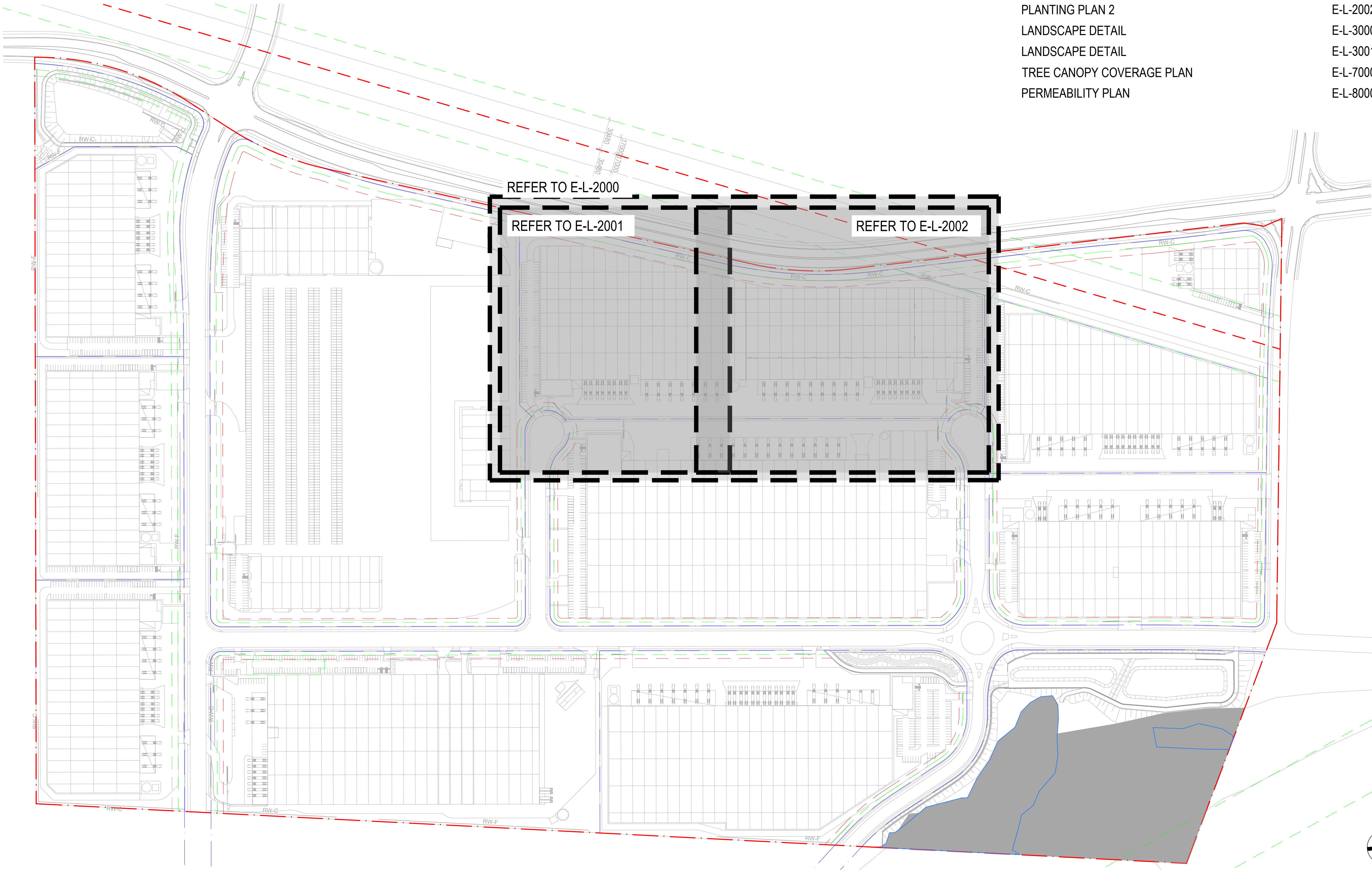
LOT E SSD-85510213

200 ALDINGTON ROAD, KEMPS CREEK NSW


Amendments		Date
Issue	Description	
A	FOR APPROVAL	28/07/2025
B	ISSUED FOR APPROVAL	02/10/2025

DRAWING SCHEDULE

COVER SHEET	E-L-0000
PLANTING PALETTE	E-L-1000
OVERALL PLANTING PLAN	E-L-2000
PLANTING PLAN 1	E-L-2001
PLANTING PLAN 2	E-L-2002
LANDSCAPE DETAIL	E-L-3000
LANDSCAPE DETAIL	E-L-3001
TREE CANOPY COVERAGE PLAN	E-L-7000
PERMEABILITY PLAN	E-L-8000



Client

FIFECAPITAL 

Client Details
A. Level 12 89 York Street,
Sydney, NSW, 2000
P. +61 2 9251 2777
E. fifeinvestors@fifecapital.com.au

GROUP GSA

Group GSA Pty Ltd ABN 76 002 113 779
Level 7, 80 William St East Sydney NSW
Australia 2011 www.groupgsa.com
T +612 9361 4144 F +612 9332 3458
architecture interior design urban design landscape
nom architect M. Sheldon 3990

Project Title
LOT E
200 ALDINGTON ROAD
KEMPS CREEK NSW
Drawing Title
COVER SHEET

Scale	1:2000@A1
Drawing created (date)	11/06/2025
By	FZ
Plotted and checked by	LI
Verified	FZ
Approved	JH
Drawing No	Issue
A220785	E-L-0000 B
File	Plot Date

This drawing is the copyright of Group GSA Pty Ltd and may not be altered, reproduced or transmitted in any form or by any means in part or in whole without the written permission of Group GSA Pty Ltd. All levels and dimensions are to be checked and verified on site prior to the commencement of any work, making of shop drawings or fabrication of components. Do not scale drawings. Use figured Dimensions.

PLANTING PALETTE - LOT E TREES



Angophora floribunda



Angophora subvelutina



Backhousia myrtifolia



Eucalyptus amplifolia



Eucalyptus ptilularis



Glochidion ferdinandi



Fraxinus Urbanite'



Jacaranda mimosifolia



Nyssa sylvatica



Waterhousea floribunda



Tristaniopsis laurina 'luscios'



Syncarpia glomulifera

SHRUBS



Bursaria spinosa



Correa alba



Correa reflexa



Westringia fruticosa

GRASSES



Dianella caerulea



Imperata cylindrica



Lomandra longifolia



Lomandra 'Tanika'

GROUND COVERS



Myoporum parvifolium



Hibbertia scandens

SCREEN PLANTING



Indigofera australis



Melaleuca thymifolia



Lepidospermum polygalifolium



Syzgium smithii

PLANTING SCHEDULE - LOT E								
TREES								
Check list species								
CODE	BOTANICAL NAME	COMMON NAME	INSTALLATION SIZE	MATURE SIZE (H x W) m	SPACING (mm)	QUANTITY	Western Sydney AerotropolisDCP Phase 2 Appendices	Mamre Road Precinct DCP 2021
Af	Angophora floribunda	Rough-barked Apple	75L	20 x 10	As shown	13	Yes - Note 1	Yes
As	Angophora subvelutina	Board-Leaved Apple	75L	25 x 10	As shown	6	Yes - Note 1	Yes
Bm	Backhousia myrtifolia	Cinnamon Myrtle	75L	3 x 4	As shown	53	Yes - Note 1	Yes
Eap	Eucalyptus amplifolia	Cabbage Gum	75L	30 x 15	As shown	22	Yes - Note 1	Yes
Epi	Eucalyptus pilularis	Blackbutt	75L	30 X15	As shown	8	Yes - Note 1	Yes
Gf	Glochidion ferdinandi	Cheese Tree	75L	30 x 10	As shown	13	Yes	Yes
Fu	Fraxinus 'Urbanite'	Urbanite Ash	75L	15 x 8	As shown	6	Yes	Yes
Jm	Jacaranda mimosifolia	Jacaranda	75L	15 x 10	As shown	4	Yes	Yes
Ns	Nyssa sylvatica	Sour Gum	75L	22 x 10	As shown	6	Yes - Note 1	Yes
Wf	Waterhousea floribunda	Lilly Pilly	75L	10 x 5	As shown	54	Yes	Yes
Tl	Tristaniaopsis laurina 'Luscious'	Water Gum	75L	12 x 5	As shown	13	Not mentioned	Not mentioned
Sg	Syncarpia glomulifera	Turpentine Tree	75L	25 x 12	As shown	20	Yes - Note 1	Yes
SCREEN PLANTING								
Ia	Indigolera australis	Australian Indigo	140mm	5 x 2	1 PLANTS / M2	746	Not mentioned	Not mentioned
Mt	Melaleuca thymifolia	Thyme Honey Myrtle	140mm	3 x 3	1 PLANTS / M2	746	Yes	Not mentioned
Lp	Leptospermum polygalifolium	Tea tree	140mm	3 x 2.5	1 PLANTS / M2	746	Yes	Not mentioned
Ss	Syzygium smithii	Lilly Pilli	140mm	5 x 3	1 PLANTS / M2	746	Not mentioned	Not mentioned
PLANTING MIX ON LOT - MIX 1								
MASS PLANTING								
Bs	Bursaria spinosa	Blackthorn	140mm	1.5 x 1	4 PLANTS / M2	3066	Yes	Yes
Ca	Correa alba	White Correa	140mm	1 x 1		3066	Yes	Yes
Cr	Correa reflexa	Native Fuchsia	140mm	1.2 x 1		2044	Yes	Yes
Wfr	Westringia fruticosa	Coastal Rosemary	140mm	1.5 x 1		4088	Yes	Not mentioned
GRASSES								
Dc	Dianella caerulea	Blue Flax-lily	tube	0.6 x 0.4	6 PLANTS / M2	1533	Yes - Note 2	Yes - Note 3
Ic'RB'	Imperata cylindrica	Blady grass	tube	0.4 x 0.3		1533	Yes - Note 2	Yes - Note 3
Li	Lomandra longifolia	Spiny-head Mat-rush	tube	1.2 x 1		1533	Yes - Note 2	Yes - Note 3
L'T	Lomandra 'Tanika'	Mat Rush	tube	0.6 x 0.6		1533	Not mentioned	Not mentioned
GROUND COVERS								
Mp	Myoporum parvifolium	Creeping Boobialla	140mm	0.3 X 2	4 PLANTS / M2	2044	Yes	Yes
Hs	Hibbertia scandens	Guinea Flower	140mm	0.3 X 2		2044	Yes	Yes
NOTE: Note 1: From the Western Sydney AerotropolisDCP Phase 2 Appendices "Only within 3km wildlife buffer, where supported by ecologist report, confirming landscape design minimises wildlife attraction." Note 2: From the Western Sydney AerotropolisDCP Phase 2 Appendices "Subject to monitoring and/or maintenance plan to ensure potential for wildlife attraction is managed" Note 3: From the Mamre Road Precinct DCP 2021 "Subject to monitoring and/or maintenance plan" Not Mentioned: species not on the list.								

Amendments	Issue Description	Date
A	FOR APPROVAL	28/07/2025
B	ISSUED FOR APPROVAL	02/10/2025

Client



Client Details
A. Level 12 89 York Street,
Sydney, NSW, 2000
P. +61 2 9251 2777
E. fifeinvestors@fifecapital.com.au



Group GSA Pty Ltd ABN 76 002 113 779
Level 7, 80 William St East Sydney NSW
Australia 2011 www.groupgsa.com

T +612 9361 4144 F +612 9332 3458
architecture interior design urban design landscape
nom architect M. Sheldon 3990

Project Title

LOT E
200 ALDINGTON ROAD
KEMPS CREEK NSW
Drawing Title
PLANTING PALETTE

Scale NTS

Drawing created (date) 11/06/2025

By FZ

Plotted and checked by LI

Verified FZ

Approved JH

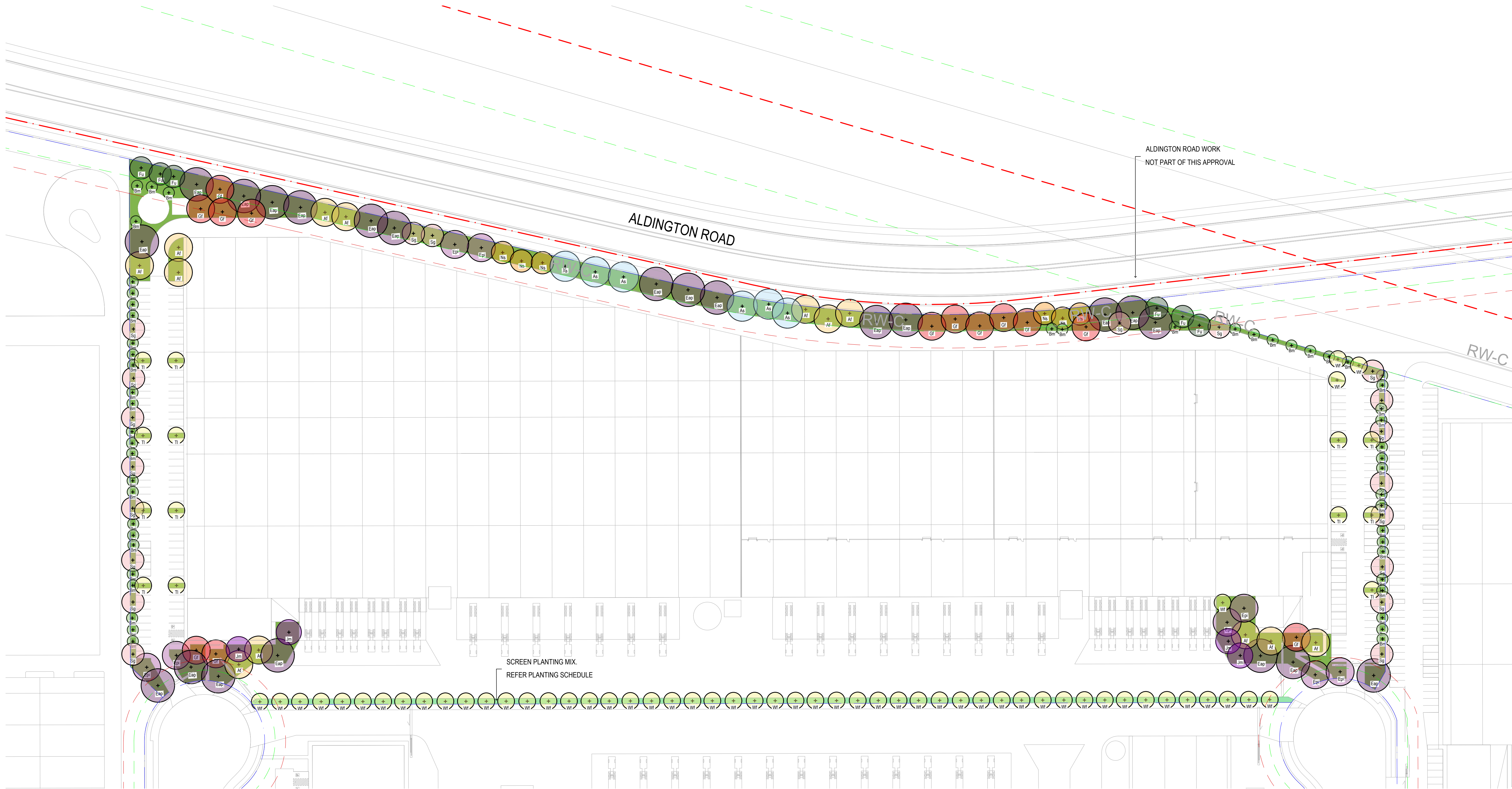
Drawing No Issue

A220785 E-L-1000 B

File Plot Date

This drawing is the copyright of Group GSA Pty Ltd and may not be altered, reproduced or transmitted in any form or by any means in part or in whole without the written permission of Group GSA Pty Ltd.
All levels and dimensions are to be checked and verified on site prior to the commencement of any work, making of shop drawings or fabrication of components.
Do not scale drawings. Use figured Dimensions.

Amendments	Issue Description	Date
A	FOR APPROVAL	25/07/2025
B	FOR APPROVAL	19/08/2025
C	ISSUED FOR APPROVAL	02/10/2025



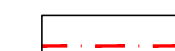




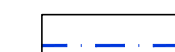








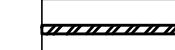



Client
FIFECAPITAL 
Client Details
A. Level 12 89 York Street,
Sydney, NSW, 2000
P. +61 2 9251 2777
E. fifeinvestors@fifecapital.com.au

GROUP GSA
Group GSA Pty Ltd ABN 76 002 113 779
Level 7, 80 William St East Sydney NSW
Australia 2011 www.groupgsa.com
T +612 9361 4144 F +612 9332 3458
architecture interior design urban design landscape
nom architect M. Sheldon 3990

Project Title
LOT E
200 ALDINGTON ROAD
KEMPS CREEK NSW
Drawing Title
OVERALL SITE PLAN

Scale 1:750@A1
Drawing created (date) 11/06/2025
By FZ
Plotted and checked by LI
Verified FZ
Approved JH
Drawing No A220785 Issue E-L-2000 C
File Plot Date

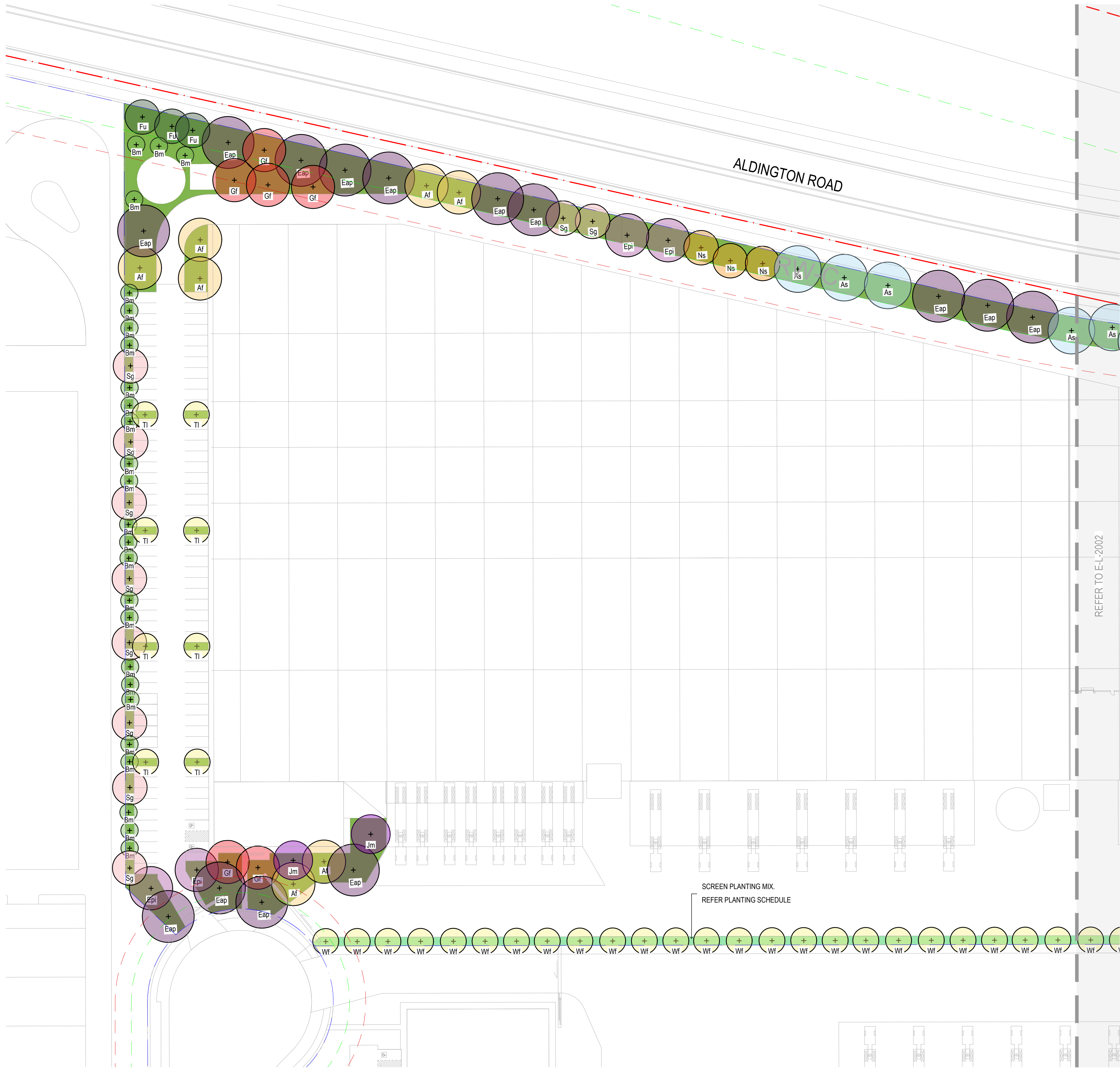
LEGEND

	SITE BOUNDARY		<i>Angophora floribunda</i> (REFER TO PLANTING PALETTE)		<i>Eucalyptus amplifolia</i> (REFER TO PLANTING PALETTE)		<i>Jacaranda mimosifolia</i> (REFER TO PLANTING PALETTE)		MASS PLANTING (REFER TO PLANTING PALETTE)
	PROPOSED BOUNDARY		<i>Angophora subvelutina</i> (REFER TO PLANTING PALETTE)		<i>Eucalyptus pilularis</i> (REFER TO PLANTING PALETTE)		<i>Nyssa sylvatica</i> (REFER TO PLANTING PALETTE)		SCREEN MIX (REFER TO PLANTING PALETTE)
	REFER ARCHITECT FOR SET-BACK REQUIREMENT		<i>Backhousia myrtifolia</i> (REFER TO PLANTING PALETTE)		<i>Glochidion ferdinandi</i> (REFER TO PLANTING PALETTE)		<i>Waterhousea floribunda</i> (REFER TO PLANTING PALETTE)		
	RETAINING WALL				<i>Fraxinus 'Urbanite'</i> (REFER TO PLANTING PALETTE)		<i>Tristanopsis laurina luscious</i> (REFER TO PLANTING PALETTE)		
							<i>Synicarpia Glomulifera</i> (REFER TO PLANTING PALETTE)		

NOTES
TREES TO BE INSTALLED AS 75L POT SIZE
TREES TO BE LOCATED CENTRALLY BETWEEN KERB AND
FOOTPATH WITH MINIMUM 600MM OFFSET FROM BACK OF KERB
ACHIEVED
TREES TO BE OFFSET 5-7M FROM DRIVEWAYS AND STREET
LIGHTS



This drawing is the copyright of Group GSA Pty Ltd and
may not be altered, reproduced or transmitted in any
form or by any means in part or in whole without the
written permission of Group GSA Pty Ltd.
All levels and dimensions are to be checked and verified
on site prior to the commencement of any work, making
of shop drawings or fabrication of components.
Do not scale drawings. Use figured Dimensions.



LEGEND

- SITE BOUNDARY
- PROPOSED BOUNDARY
- REFER ARCHITECT FOR SET-BACK REQUIREMENT
- RETAINING WALL

- Angophora floribunda*
(REFER TO PLANTING PALETTE)
- Angophora subvelutina*
(REFER TO PLANTING PALETTE)
- Backhousia myrtifolia*
(REFER TO PLANTING PALETTE)

- Eucalyptus amplifolia*
(REFER TO PLANTING PALETTE)
- Eucalyptus pilularis*
(REFER TO PLANTING PALETTE)
- Glochidion ferdinandi*
(REFER TO PLANTING PALETTE)
- Fraxinus 'Urbanite'*
(REFER TO PLANTING PALETTE)

- Jacaranda mimosifolia*
(REFER TO PLANTING PALETTE)
- Nyssa sylvatica*
(REFER TO PLANTING PALETTE)
- Waterhousea floribunda*
(REFER TO PLANTING PALETTE)
- Tristanopsis laurina luscious*
(REFER TO PLANTING PALETTE)
- Synicarpia Glomulifera*
(REFER TO PLANTING PALETTE)

- MASS PLANTING
(REFER TO PLANTING PALETTE)
- SCREEN MIX
(REFER TO PLANTING PALETTE)

NOTES

- TREES TO BE INSTALLED AS 75L POT SIZE
- TREES TO BE LOCATED CENTRALLY BETWEEN KERB AND FOOTPATH WITH MINIMUM 600MM OFFSET FROM BACK OF KERB ACHIEVED
- TREES TO BE OFFSET 5-7M FROM DRIVEWAYS AND STREET LIGHTS

Amendments	Issue Description	Date
A	FOR APPROVAL	25/07/2025
B	FOR APPROVAL	19/08/2025
C	ISSUED FOR APPROVAL	02/10/2025

Client

FIFECAPITAL

Client Details
A. Level 12 89 York Street,
Sydney, NSW, 2000
P. +61 2 9251 2777
E. fifeinvestors@fifecapital.com.au

GROUP GSA

Group GSA Pty Ltd ABN 76 002 113 779
Level 7, 80 William St East Sydney NSW
Australia 2011 www.groupgsa.com

T +612 9361 4144 F +612 9332 3458
architecture interior design urban design landscape
nom architect M. Sheldon 3990

Project Title

LOT E
200 ALDINGTON ROAD
KEMPS CREEK NSW
Drawing Title

PLANTING PLAN 01

Scale 1:500@A1

Drawing created (date) 11/06/2025

By FZ

Plotted and checked by LI

Verified FZ

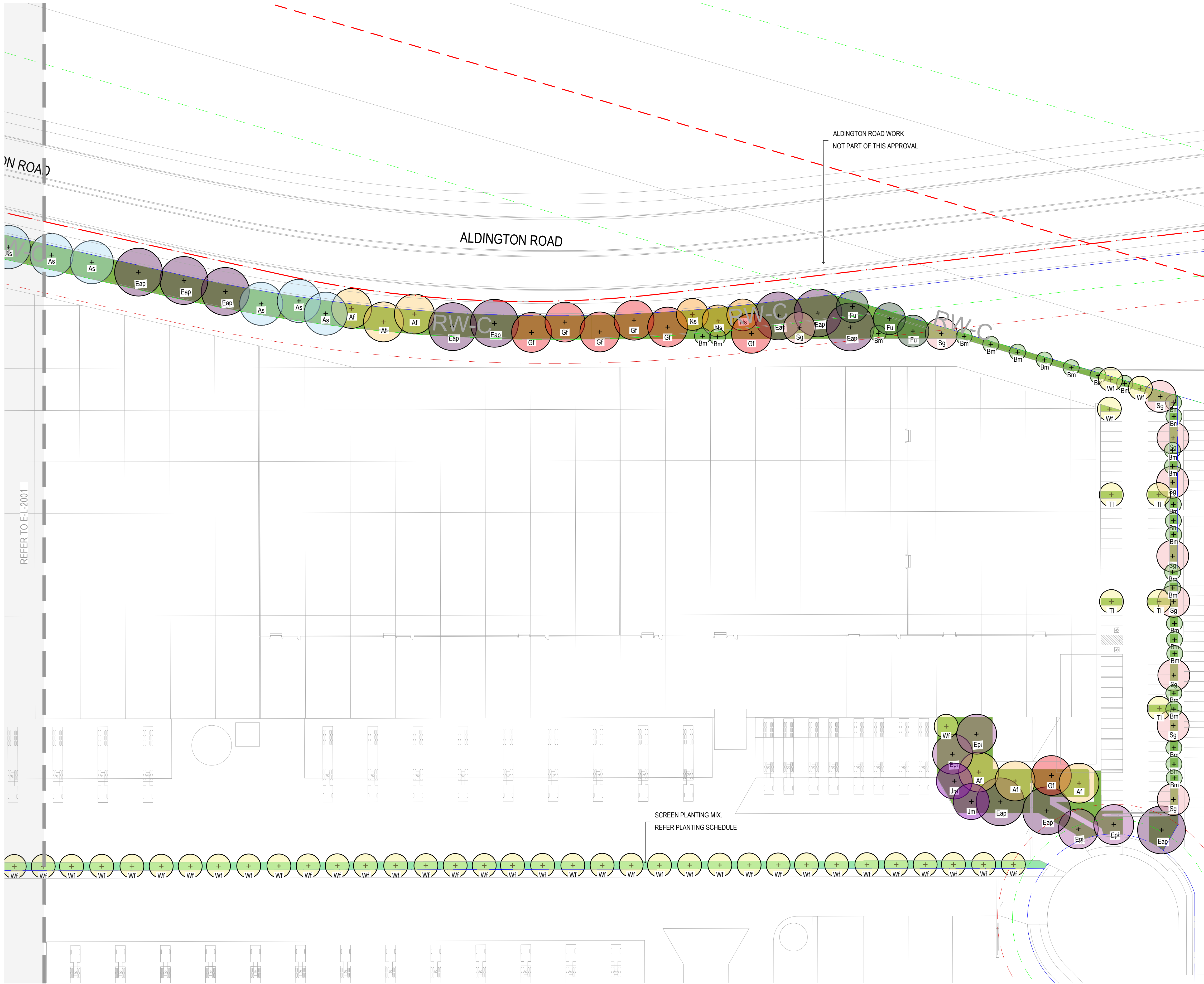
Approved JH

Drawing No A220785 Issue

File E-L-2001 C Plot Date

This drawing is the copyright of Group GSA Pty Ltd and may not be altered, reproduced or transmitted in any form or by any means in part or in whole without the written permission of Group GSA Pty Ltd. All levels and dimensions are to be checked and verified on site prior to the commencement of any work, making of shop drawings or fabrication of components. Do not scale drawings. Use figured Dimensions.

Amendments	Issue Description	Date
A	FOR APPROVAL	25/07/2025
B	FOR APPROVAL	18/08/2025
C	ISSUED FOR APPROVAL	02/10/2025



LEGEND

	SITE BOUNDARY
	PROPOSED BOUNDARY
	REFER ARCHITECT FOR SET-BACK REQUIREMENT
	RETAINING WALL

	<i>Angophora floribunda</i> (REFER TO PLANTING PALETTE)
	<i>Angophora subvelutina</i> (REFER TO PLANTING PALETTE)
	<i>Backhousia myrtifolia</i> (REFER TO PLANTING PALETTE)

	<i>Eucalyptus amplifolia</i> (REFER TO PLANTING PALETTE)
	<i>Eucalyptus pilularis</i> (REFER TO PLANTING PALETTE)
	<i>Glochidion ferdinandi</i> (REFER TO PLANTING PALETTE)
	<i>Fraxinus 'Urbanite'</i> (REFER TO PLANTING PALETTE)

	<i>Jacaranda mimosifolia</i> (REFER TO PLANTING PALETTE)
	<i>Nyssa sylvatica</i> (REFER TO PLANTING PALETTE)
	<i>Waterhousea floribunda</i> (REFER TO PLANTING PALETTE)
	<i>Tristaniopsis laurina luscious</i> (REFER TO PLANTING PALETTE)
	<i>Synicarpia Glomulifera</i> (REFER TO PLANTING PALETTE)

	MASS PLANTING (REFER TO PLANTING PALETTE)
	SCREEN MIX (REFER TO PLANTING PALETTE)

NOTES

TREES TO BE INSTALLED AS 75L POT SIZE

TREES TO BE LOCATED CENTRALLY BETWEEN KERB AND FOOTPATH WITH MINIMUM 600MM OFFSET FROM BACK OF KERB ACHIEVED

TREES TO BE OFFSET 5-7M FROM DRIVEWAYS AND STREET LIGHTS

Client



Client Details
A. Level 12 89 York Street,
Sydney, NSW, 2000
P. +61 2 9251 2777
E. fifeinvestors@fifecapital.com.au



Group GSA Pty Ltd ABN 76 002 113 779
Level 7, 80 William St East Sydney NSW
Australia 2011 www.groupgsa.com

T +612 9361 4144 F +612 9332 3458
architecture interior design urban design landscape
nom architect M. Sheldon 3990

Project Title

LOT E
200 ALDINGTON ROAD
KEMPS CREEK NSW
Drawing Title
PLANTING PLAN 02

Scale 1:500@A1

Drawing created (date) 11/06/2025

By FZ

Plotted and checked by LI

Verified FZ

Approved JH

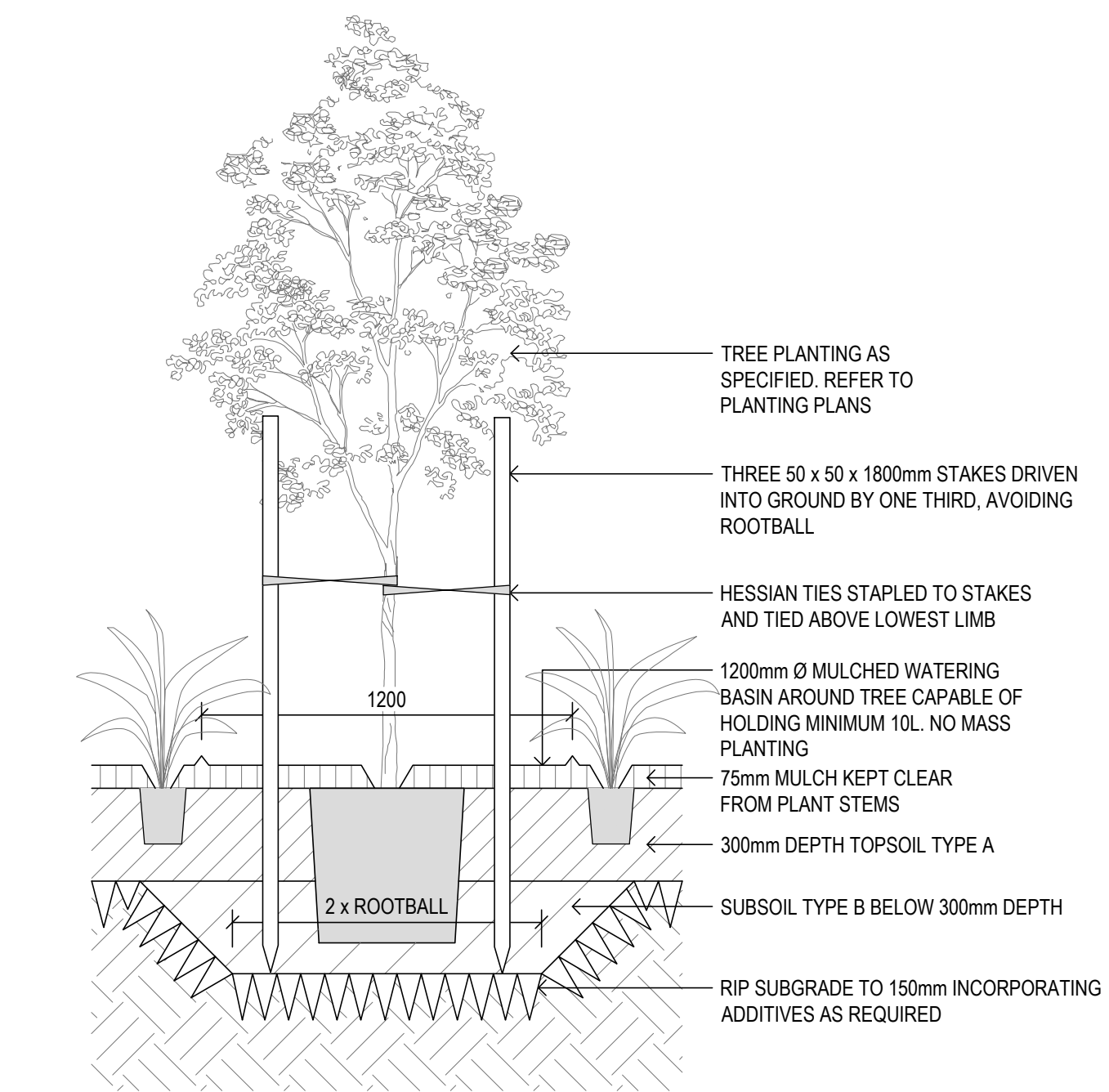
Drawing No A220785 Issue E-L-2002 C

File Plot Date

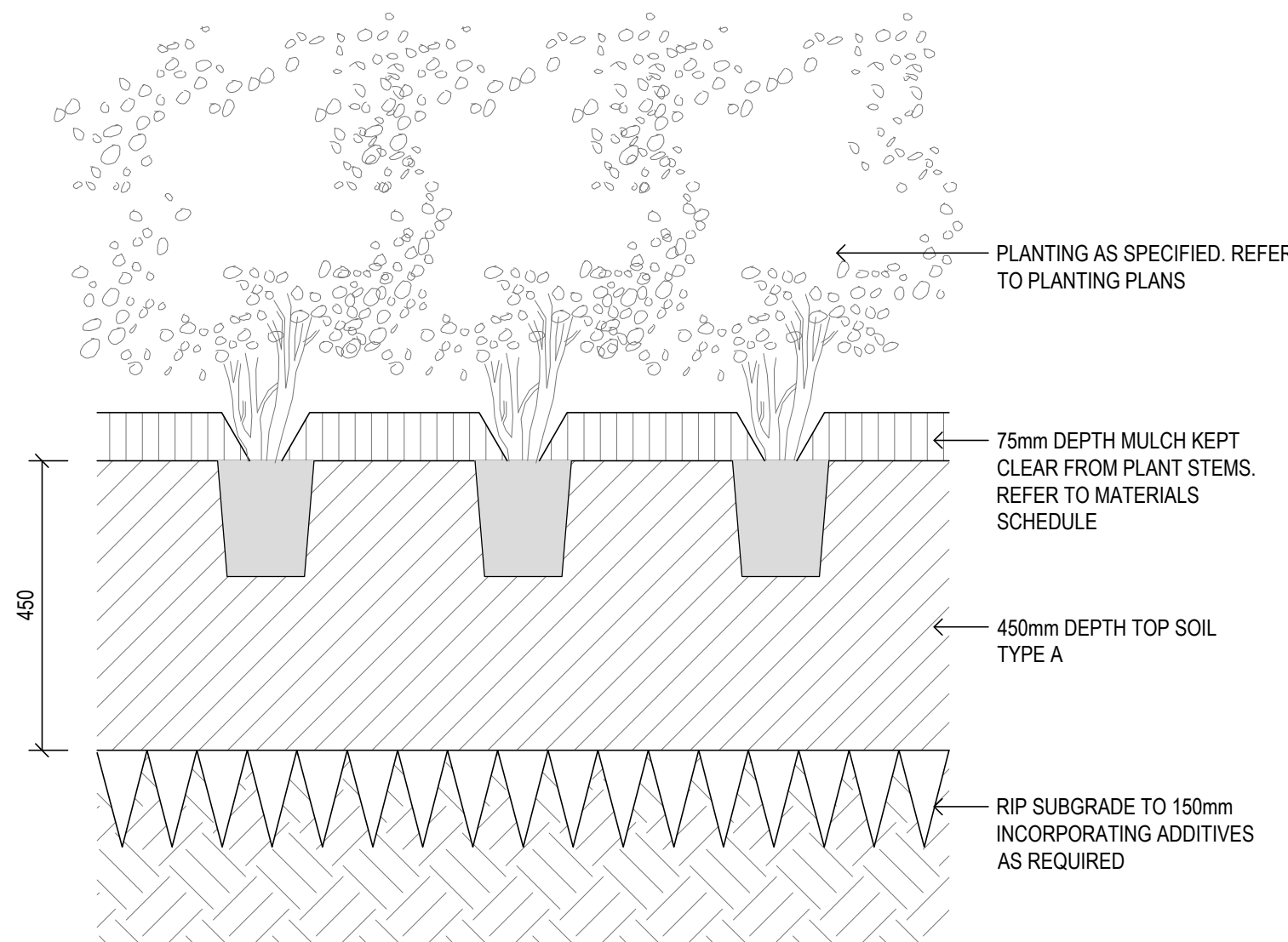


This drawing is the copyright of Group GSA Pty Ltd and may not be altered, reproduced or transmitted in any form or by any means in part or in whole without the written permission of Group GSA Pty Ltd. All levels and dimensions are to be checked and verified on site prior to the commencement of any work, making of shop drawings or fabrication of components. Do not scale drawings. Use figured Dimensions.

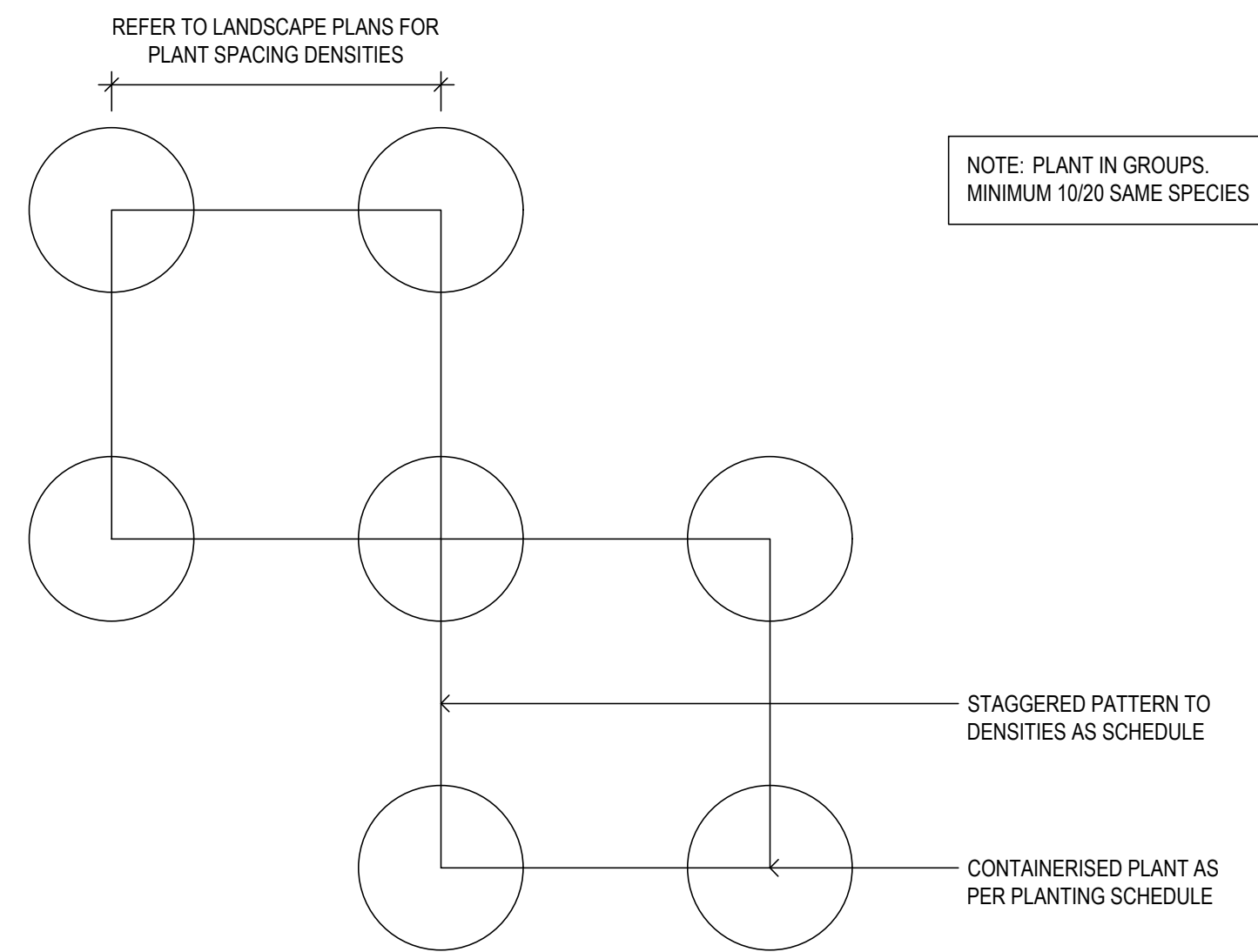
Amendments		Date
Issue	Description	
A	FOR APPROVAL	28/07/2025
B	ISSUED FOR APPROVAL	02/10/2025



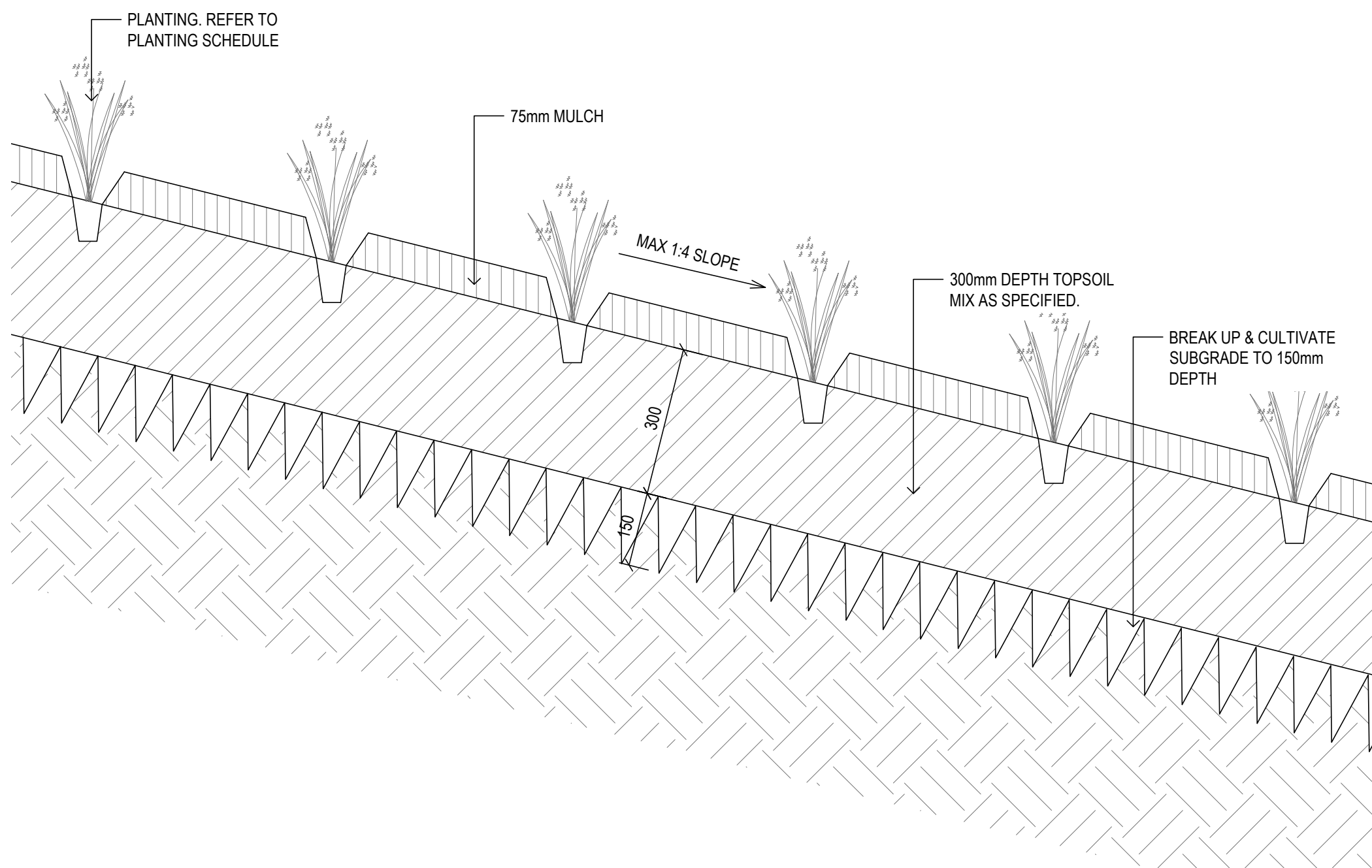
01 TREE IN MASS PLANTING
1:20



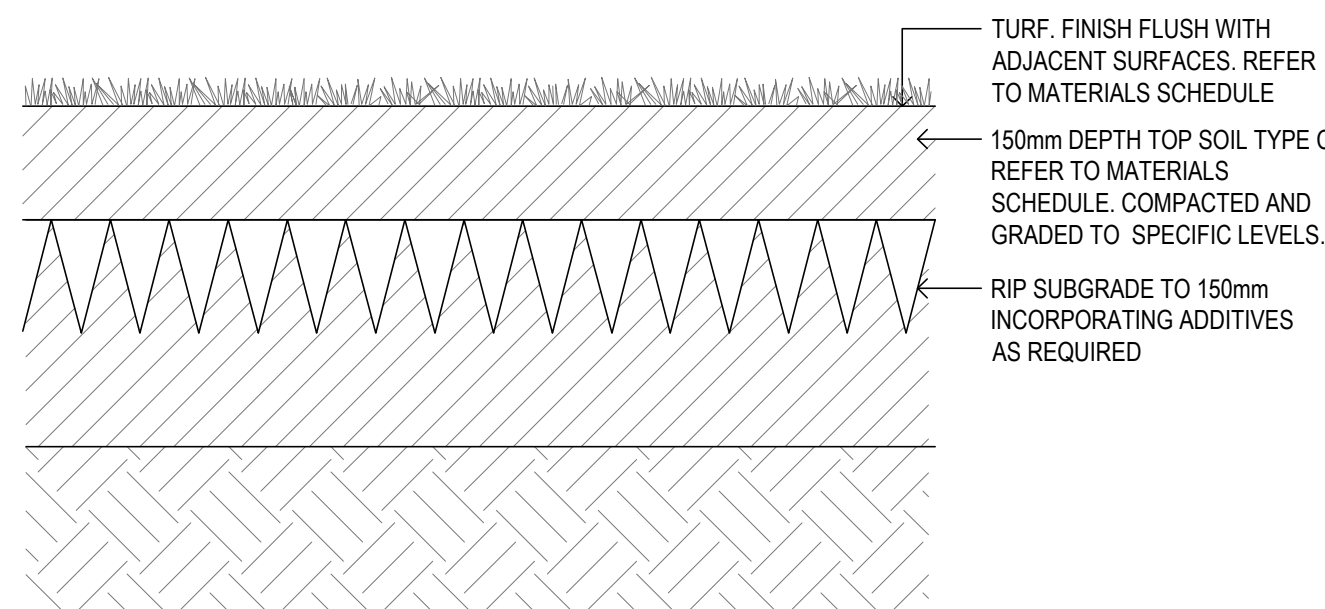
02 MASS PLANTING
1:10



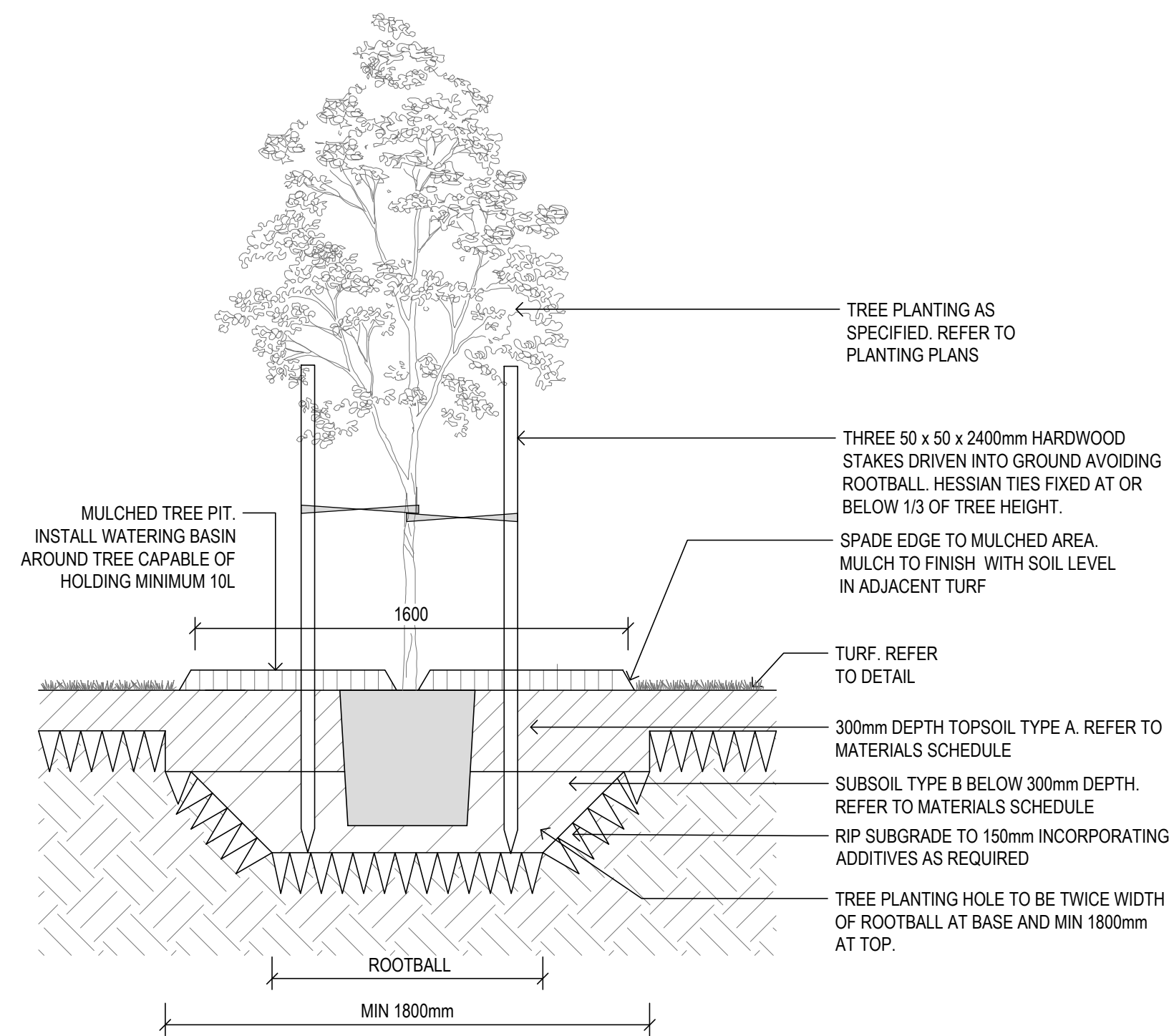
03 TYPICAL PLANTING PATTERN
1:20



04 MASS PLANTING ON SLOPE
1:10



05 TURF
1:10



06 TREE IN TURF
1:20

Client



Client Details
A. Level 12 89 York Street,
Sydney, NSW, 2000
P. +61 2 9251 2777
E. fifeinvestors@fifecapital.com.au



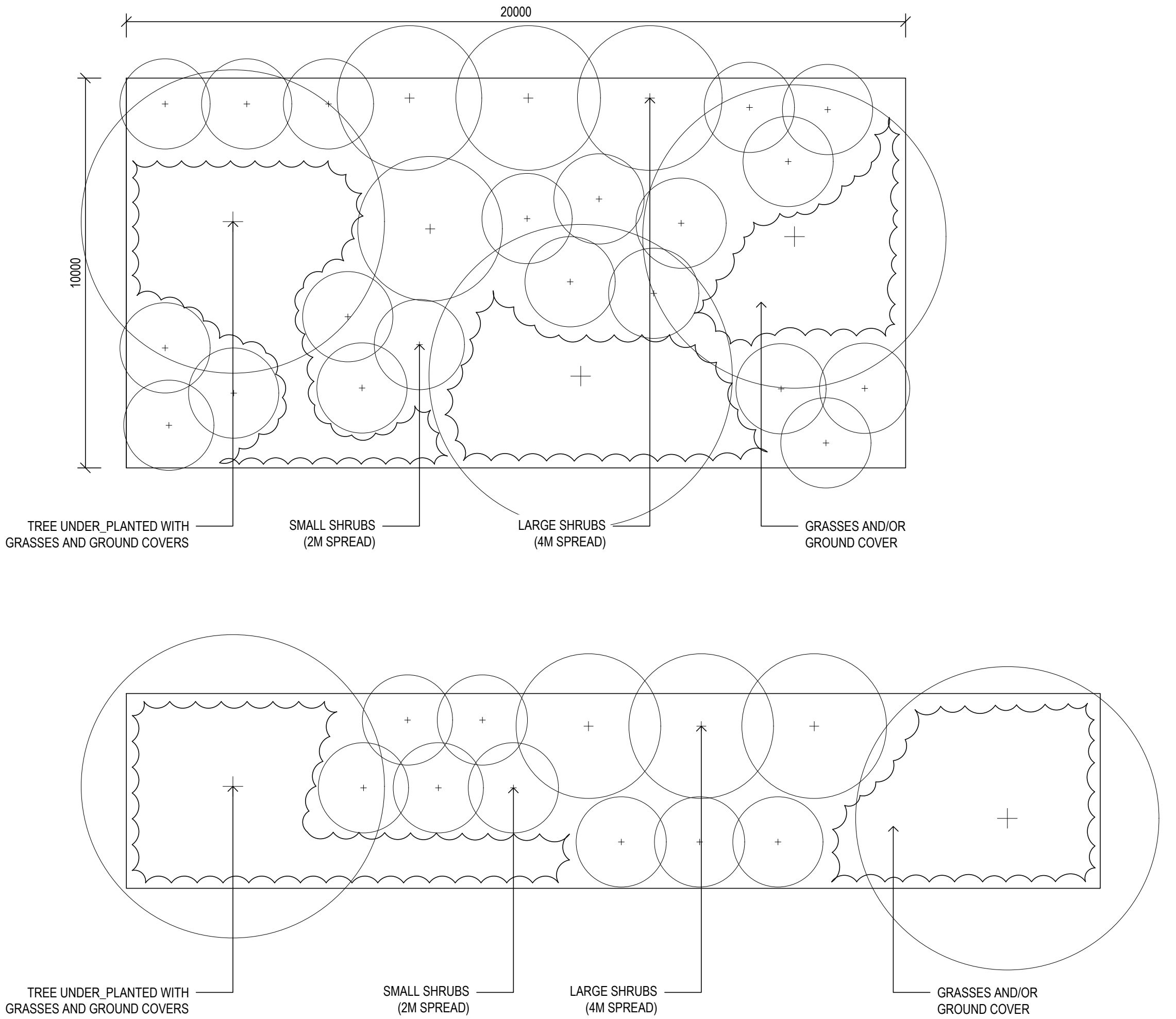
Group GSA Pty Ltd ABN 76 002 113 779
Level 7, 80 William St East Sydney NSW
Australia 2011 www.groupgsa.com
T +612 9361 4144 F +612 9332 3458
architecture interior design urban design landscape
nom architect M. Sheldon 3990

Project Title
LOT E
200 ALDINGTON ROAD
KEMPS CREEK NSW
Drawing Title
TYPICAL DETAILS

Scale	AS SHOWN
Drawing created (date)	11/06/2025
By	FZ
Plotted and checked by	LI
Verified	FZ
Approved	JH
Drawing No	Issue
A220785	E-L-3000 B
File	Plot Date

This drawing is the copyright of Group GSA Pty Ltd and may not be altered, reproduced or transmitted in any form or by any means in part or in whole without the written permission of Group GSA Pty Ltd.
All levels and dimensions are to be checked and verified on site prior to the commencement of any work, making of shop drawings or fabrication of components.
Do not scale drawings. Use figured Dimensions.

Amendments		
Issue	Description	Date
A	FOR APPROVAL	28/07/2025
B	ISSUED FOR APPROVAL	02/10/2025



EXAMPLE OF BOUNDARY/BUFFER PLANTING. LAYOUT OF PLANTING MAYBE REPEATED ALONG THE LENGTH OF THE SUBJECT SITE TO MEET THE REQUIRED LANDSCAPE AREA.

01 PLANTNG SPACING

Client



Client Details
A. Level 12 89 York Street,
Sydney, NSW, 2000
P. +61 2 9251 2777
E. fifeinvestors@fifecapital.com.au

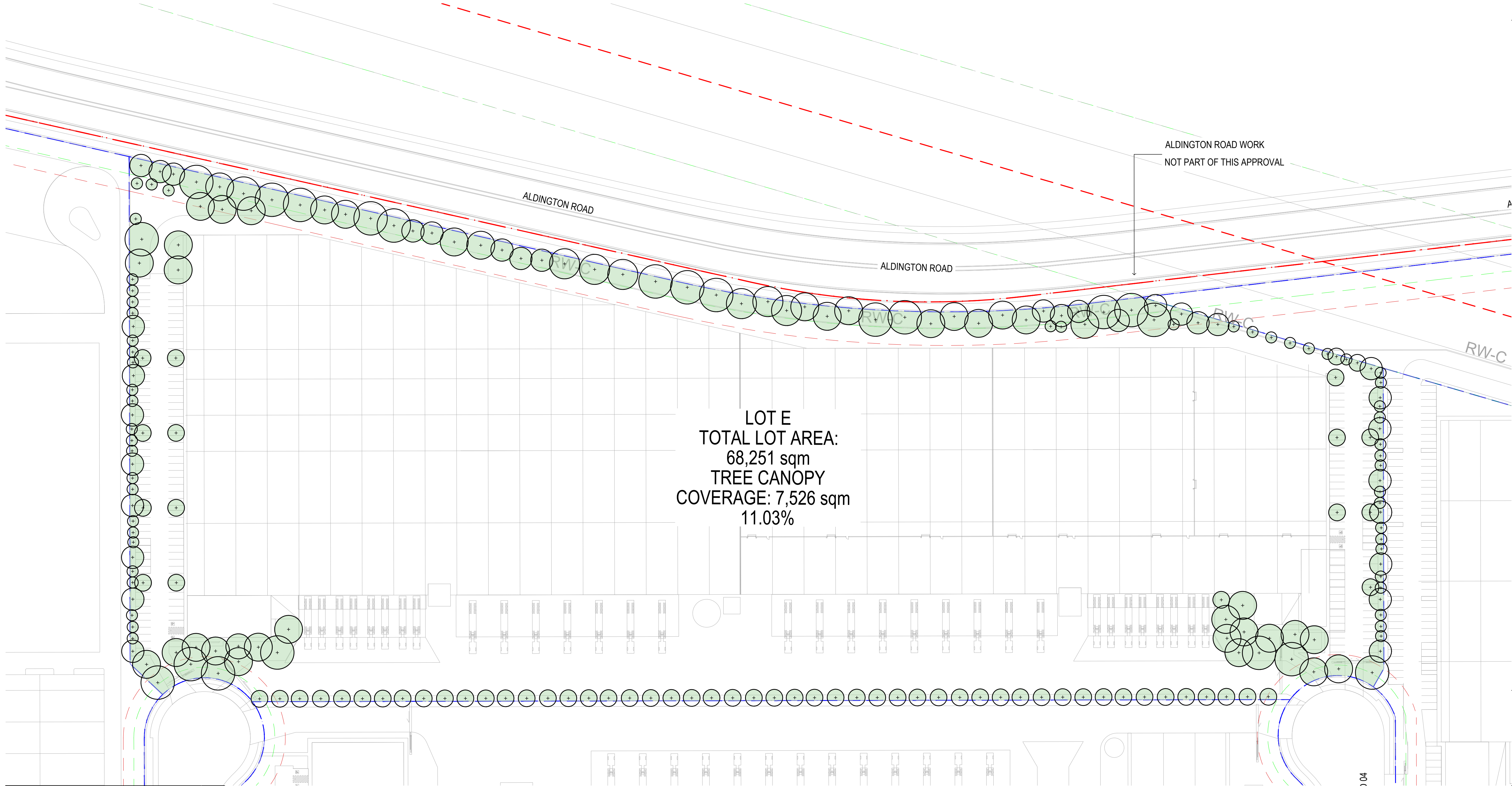


Group GSA Pty Ltd ABN 76 002 113 779
Level 7, 80 William St East Sydney NSW
Australia 2011 www.groupgsa.com
T +612 9361 4144 F +612 9332 3458
architecture interior design urban design landscape
nom architect M. Sheldon 3990

Project Title
LOT E
200 ALDINGTON ROAD
KEMPS CREEK NSW
Drawing Title
TYPICAL DETAILS

Scale	AS SHOWN
Drawing created (date)	11/06/2025
By	FZ
Plotted and checked by	LI
Verified	FZ
Approved	JH
Drawing No	Issue
A220785	E-L-3001 B
File	Plot Date

This drawing is the copyright of Group GSA Pty Ltd and may not be altered, reproduced or transmitted in any form or by any means in part or in whole without the written permission of Group GSA Pty Ltd.
All levels and dimensions are to be checked and verified on site prior to the commencement of any work, making of shop drawings or fabrication of components.
Do not scale drawings. Use figured Dimensions.



	DEVELOPMENT LOT AREA	TREE CANOPY AREA LOT E	
	sqm	sqm	%
LOT E	68,251	7,526	11.03

Amendments		Date
Issue	Description	
A	FOR APPROVAL	28/07/2025
B	FOR APPROVAL	19/08/2025
C	ISSUED FOR APPROVAL	02/10/2025

Client

FIFECAPITAL 

Client Details
A. Level 12 89 York Street,
Sydney, NSW, 2000
P. +61 2 9251 2777
E. fifeinvestors@fifecapital.com.au

GROUP GSA

Group GSA Pty Ltd ABN 76 002 113 779
Level 7, 80 William St East Sydney NSW
Australia 2011 www.groupgsa.com

T +612 9361 4144 F +612 9332 3458
architecture interior design urban design landscape
nom architect M. Sheldon 3990

Project Title

LOT E
200 ALDINGTON ROAD
KEMPS CREEK NSW

Drawing Title

TREE CANOPY COVERAGE

Scale 1:750@A1

Drawing created (date) 16/08/2022

By FZ


Plotted and checked by LI

Verified FZ

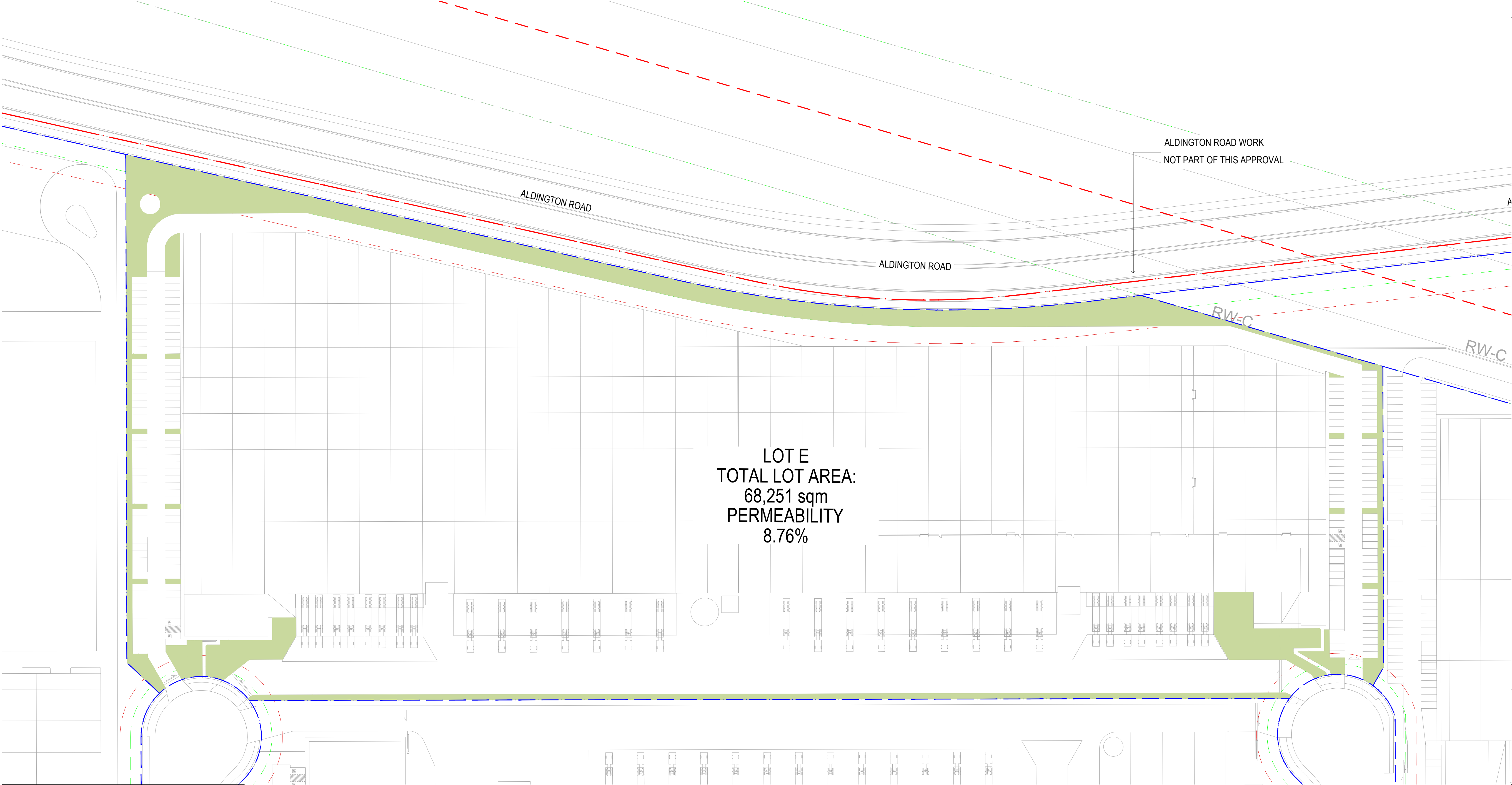
Approved JH

Drawing No A220785 Issue

File E-L-7000 C Plot Date



This drawing is the copyright of Group GSA Pty Ltd and may not be altered, reproduced or transmitted in any form or by any means in part or in whole without the written permission of Group GSA Pty Ltd.
All levels and dimensions are to be checked and verified on site prior to the commencement of any work, making of shop drawings or fabrication of components.
Do not scale drawings. Use figured Dimensions.



	LOT AREA	LANDSCAPE	PERMEABILITY
	sqm	sqm	%
LOT E	68,251	5,981	8.76

Amendments	Issue Description	Date
A	ISSUED FOR APPROVAL	02/10/2025

Client

FIFECAPITAL 


Client Details
A. Level 12 89 York Street,
Sydney, NSW, 2000
P. +61 2 9251 2777
E. fifeinvestors@fifecapital.com.au

GROUP GSA

Group GSA Pty Ltd ABN 76 002 113 779
Level 7, 80 William St East Sydney NSW
Australia 2011 www.groupgsa.com
T +612 9361 4144 F +612 9332 3458
architecture interior design urban design landscape
nom architect M. Sheldon 3990

Project Title
LOT E
200 ALDINGTON ROAD
KEMPS CREEK NSW
Drawing Title
TREE CANOPY COVERAGE

Scale 1:750@A1
Drawing created (date) 23/09/2025
By FZ
Plotted and checked by LI
Verified FZ
Approved JH
Drawing No Issue
A220785 **E-L-8000 A**
File Plot Date

 This drawing is the copyright of Group GSA Pty Ltd and may not be altered, reproduced or transmitted in any form or by any means in part or in whole without the written permission of Group GSA Pty Ltd. All levels and dimensions are to be checked and verified on site prior to the commencement of any work, making of shop drawings or fabrication of components. Do not scale drawings. Use figured Dimensions.