

CASTLE HILL

16-20 OLD CASTLE HILL ROAD, CASTLE HILL NSW

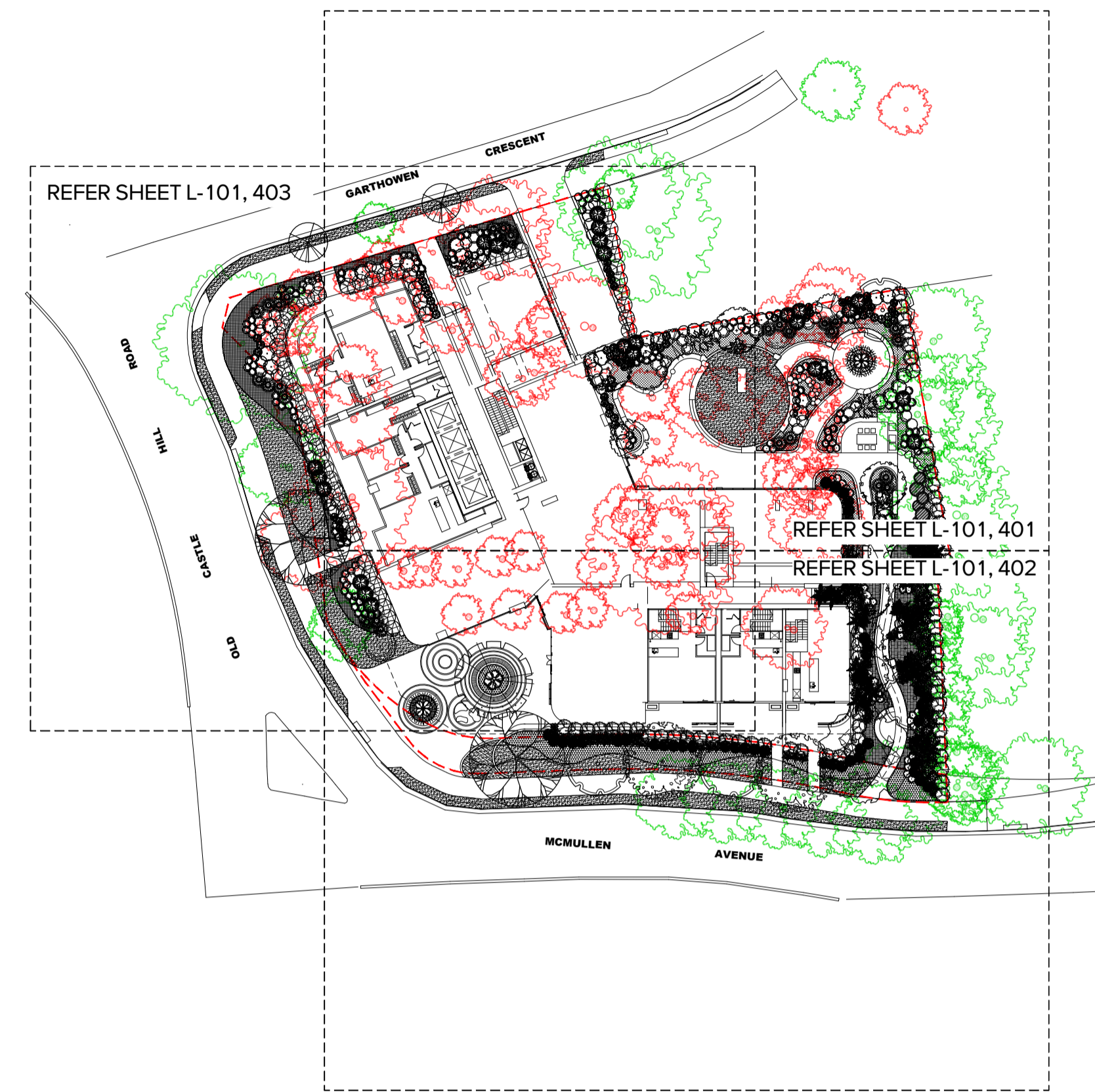
GROUND FLOOR /LEVEL 1 KEY PLAN

SCALE: 1:500@A1

Copyright remains the property of Arcadia Design Group Pty Ltd. Use only figured dimensions. Any other required dimensions are to be referred to and supplied by the landscape architect. All discrepancies to be referred to the project manager and Arcadia Design Group Pty Ltd prior to construction. Ensure compliance with the Building Code of Australia and all relevant Australian Standards and Authority requirements.

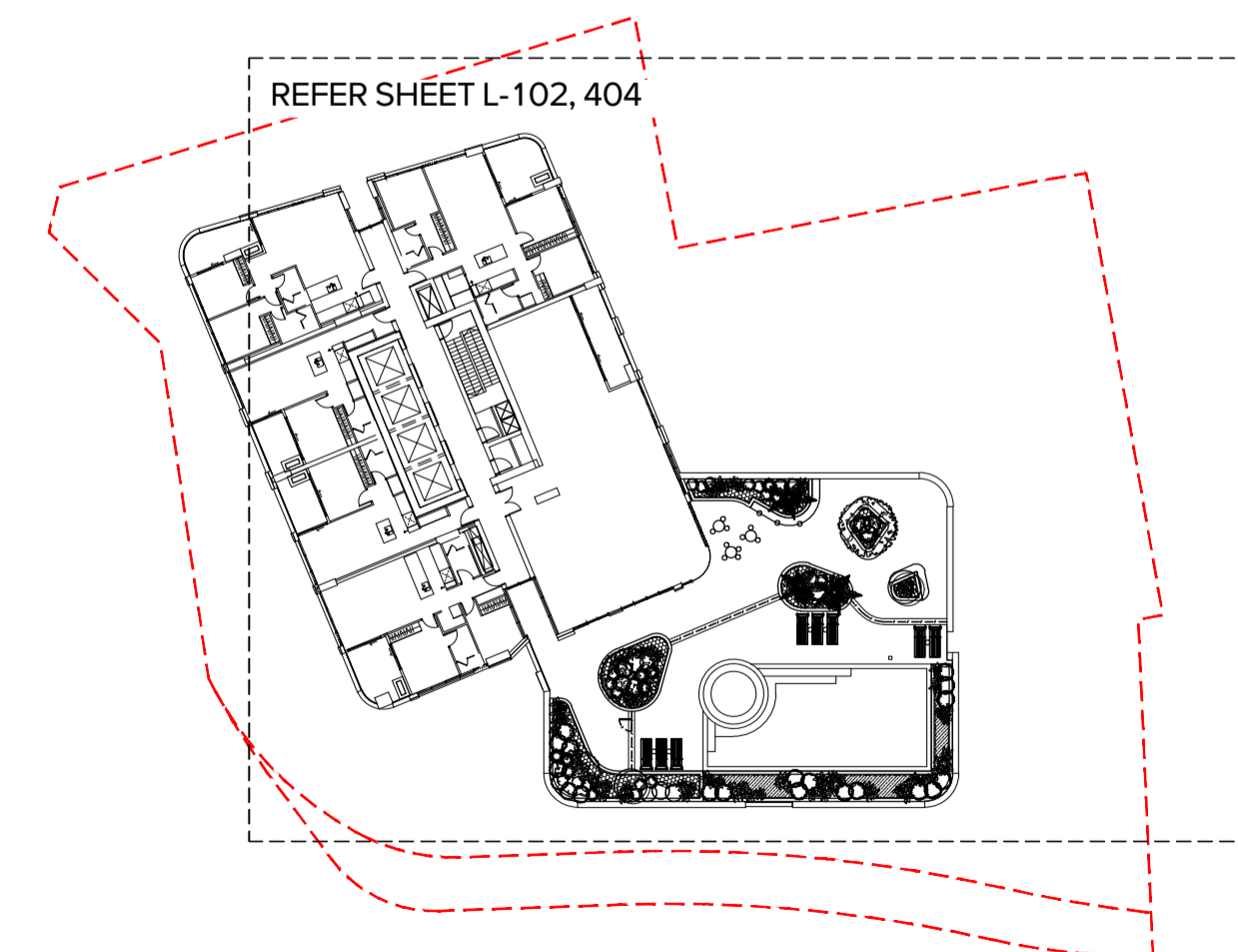
DRAWING SCHEDULE

DRAWING NO.	DRAWING TITLE
L-000	COVER SHEET
L-101	LANDSCAPE MASTERPLAN GROUND FLOOR/LEVEL 1
L-102	LANDSCAPE MASTERPLAN LEVEL 30 ROOFTOP
L-400	PLANTING SCHEDULE
L-401	SOFTWORKS PLAN GROUND FLOOR/LEVEL 1
L-402	SOFTWORKS PLAN GROUND FLOOR/LEVEL 1
L-403	SOFTWORKS PLAN GROUND FLOOR/LEVEL 1
L-404	SOFTWORKS PLAN LEVEL 30 ROOFTOP
L-601	LANDSCAPE DETAILS
L-701	LANDSCAPE SPECIFICATION



LEVEL 30 ROOFTOP KEY PLAN

SCALE: 1:500@A1



Issue	Revision Description	Drawn	Check	Date
B	SSDA ISSUE	SS/JS	NW	17.12.25
A	SSDA DRAFT	SS/JS	NW	26.11.25

Not for Construction

Project
16 - 20 Old Castle Hill Road
 Castle Hill, NSW
 SSDA

Client Name

URBAN
 PROPERTY

Drawing No. L-000 Drawing Name Cover Sheet



Job No. 24-1064 Issue B Scale



Sydney, Suite 70, Jones Bay
 Wharf, 26-32 Pirrama Road,
 Pyrmont NSW 2009
 E sydney@arcadia.com.au
 T 02 8571 2900

ARCADIA

Copyright remains the property of Arcadia Design Group Pty Ltd. Use only figured dimensions. Any other required dimensions are to be referred to and supplied by the landscape architect. All discrepancies to be referred to the project manager and Arcadia Design Group Pty Ltd prior to construction. Ensure compliance with the Building Code of Australia and all relevant Australian Standards and Authority requirements.

TREES RETAINED & REMOVED
 EXISTING TREE TO BE RETAINED
 EXISTING TREE TO BE REMOVED



B	SSDA ISSUE	SSJS	NW	17.12.25
A	SSDA DRAFT	SSJS	NW	26.11.25
Issue	Revision Description	Drawn	Check	Date

Not for Construction

Project
16 - 20 Old Castle Hill Road
 Castle Hill, NSW
 SSDA

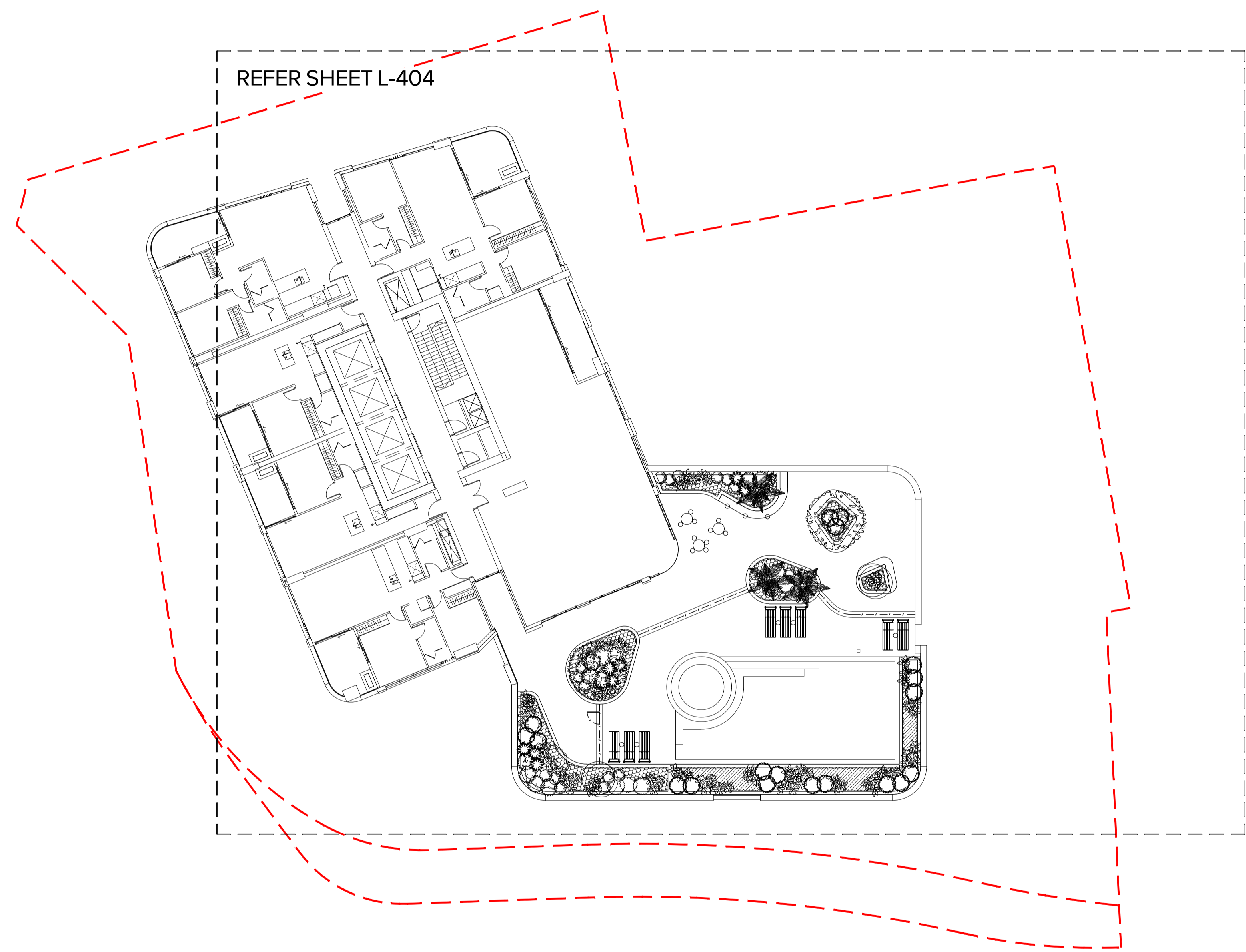
Client Name
URBAN
 PROPERTY

Drawing No. Drawing Name
L-101 Landscape Masterplan
 Ground Floor/Level 1

Job No. 24-1064
 Issue B
 Scale 1:200 @ A1

Sydney, Suite 70, Jones Bay Wharf, 26-32 Pirrama Road, Pyrmont NSW 2009
 E sydney@arcadiad.com.au
 T 02 8571 2900

ARCADIA



Issue	Revision Description	Drawn	Check	Date
B	SSDA ISSUE	SS/JS	NW	17.12.25
A	SSDA DRAFT	SS/JS	NW	26.11.25

Not for Construction

Project
16 - 20 Old Castle Hill Road
Castle Hill, NSW
SSDA

Client Name
URBAN
PROPERTY

Drawing No. Drawing Name
L-102 Landscape Masterplan
Level 30 Rooftop

Job No. 24-1064
Issue B
Scale 1:200 @ A1

Sydney, Suite 70, Jones Bay
Wharf, 26-32 Pirrama Road,
Pyrmont NSW 2009
E sydney@arcadia.com.au
T 02 8571 2900



24-1064 16-20 OLD CASTLE HILL ROAD, CASTLE HILL PLANT SCHEDULE

CODE	BOTANIC NAME	COMMON NAME	MATURE SIZE (h x w) (m)	PROPOSED POT SIZE	SPACING	QUANTITY
GROUND FLOOR & LEVEL 1						
PUBLIC DOMAIN TREES						
Fax	<i>Franklinia axillaris</i>	Fried Egg Plant	6 x 5	100L	AS SHOWN	2
DEEP SOIL TREES						
Aco	<i>Angophora costata</i>	Smooth Barked Apple	15 x 10	100L	AS SHOWN	2
Epa	<i>Eucalyptus paniculata</i>	Grey Ironbark	15 x 8	100L	AS SHOWN	4
Sgl	<i>Syncarpia glomulifera</i>	Turpentine	15 x 12	100L	AS SHOWN	1
Fam	<i>Fraxinus americana</i>	White Ash	15 x 12	100L	AS SHOWN	2
PODIUM TREES						
Afl	<i>Agonis flexuosa</i>	Willow Myrtle	10 x 10	100L	AS SHOWN	1
Csa	<i>Callistemon viminalis</i>	Weeping Bottle Brush	10 x 4	100L	AS SHOWN	4
Cau	<i>Citrus australasica</i>	Australian Finger Lime	5 x 3	45L	AS SHOWN	2
Cfs	<i>Corymbia ficifolia 'Summer Beauty'</i>	Summer Beauty	6 x 3	100L	AS SHOWN	2
Bci	<i>Backhousia citriodora</i>	Lemon Myrtle	8 x 6	100L	AS SHOWN	7
Ere	<i>Elaeocarpus reticulatus</i>	Blueberry Ash	10 x 5	400L	AS SHOWN	3
Mso	<i>Magnolia soulangeana</i>	Saucer Magnolia	6 x 4	400L	AS SHOWN	2
Til	<i>Tristanopsis laurina 'Luscious'</i>	Luscious Kanooka Gum	8 x 4	400L	AS SHOWN	5
SUN SHRUBS						
Bru	<i>Bauera rubroides</i>	River Rose	1.5 x 1	300mm	AS SHOWN	29
Cci	<i>Callistemon citrinus</i>	Crimson Bottlebrush	3 x 2	300mm	AS SHOWN	54
Cal	<i>Correa alba</i>	White Correa	1.5 x 1.5	300mm	AS SHOWN	53
Gli	<i>Grevillea linearifolia</i>	Linear Leaf Grevillea	1.5 x 1	300mm	AS SHOWN	37
Lis	<i>Leptospermum laevigatum 'Shore Tuff'</i>	Tea Tree	0.5 x 1.2	300mm	AS SHOWN	27
Lpc	<i>Leptospermum polygalifolium 'Cardwell'</i>	Tea Tree	1.2 x 2	300mm	AS SHOWN	23
Mth	<i>Melaleuca thymifolia</i>	Honey Myrtle	1.2 x 2	300mm	AS SHOWN	33
Odr	<i>Ozothamnus diosmifolius 'Radianc'e'</i>	Riceflower	2 x 1	300mm	AS SHOWN	16
Rop	<i>Rhaphiolepis indica 'Oriental Pearl'</i>	Indian Hawthorn	1 x 1	300mm	AS SHOWN	35
Sca	<i>Syzygium 'Cascade'</i>	Lily Pilly	3 x 2	300mm	AS SHOWN	68
Wfb	<i>Westringia fruticosa 'Blue Gem'</i>	Coastal Rosemary	1.5 x 1.0	300mm	AS SHOWN	106
SHADE SHRUBS						
Ama	<i>Alocasia macrorrhiza</i>	Elephants Ears	2 x 1.5	300mm	AS SHOWN	37
Anu	<i>Alpinia nutans</i>	Dwarf Cardamom	1.5 x 1	300mm	AS SHOWN	51
Lre	<i>Ligularia reniformis</i>	Tractor Seat	1 x 1	300mm	AS SHOWN	29
Pxa	<i>Philodendron 'Xanadu'</i>	Xanadu	1.5 x 1.5	300mm	AS SHOWN	49
FERNS						
Aau	<i>Asplenium australasicum</i>	Birds Nest Fern	1.5 x 1.5	300mm	AS SHOWN	34
Bca	<i>Blechnum cartilagineum</i>	Gristle Fern	1.5 x 1	300mm	AS SHOWN	44
Cdu	<i>Calochlaena dubia</i>	Bracken Fern	2 x 1	300mm	AS SHOWN	28
Cco	<i>Cyathea cooperi</i>	Australian Tree Fern	6 x 3	1.5m trunk	AS SHOWN	17
MATRIX 1: SUN GROUNDCOVERS MIX						Total Area: 110m2
Abb	<i>Anigozanthos 'Bush Blitz'</i>	Kangaroo Paw	1 x 0.5	200mm	6/m2	73
Bsb	<i>Banksia spinulosa 'Birthday Candles'</i>	Banksia	0.5 x 1	200mm	4/m2	49
Bmb	<i>Brachyscome multifida 'Break O Day'</i>	Cut Leaf Daisy	0.3 x 0.5	200mm	6/m2	73
Csr	<i>Crocea saligna 'Rosy Glow'</i>	Crocea	1 x 1	200mm	4/m2	49
Llo	<i>Lomandra longifolia</i>	Siny-Head Mat-Rush	1 x 1	200mm	6/m2	73
Mpa	<i>Myoporum parvifolium</i>	Creeping Boobialla	0.3 x 3	200mm	6/m2	73
Pse	<i>Paterosonia sericea</i>	Native Iris	0.6 x 0.6	200mm	6/m2	73
Ple	<i>Poa labillardieri 'Eskdale'</i>	Tussock Grass	1 x 0.5	200mm	6/m2	73
Pvp	<i>Pultenaea villosa 'Prostrate Form'</i>	Hairy Bush Pea	0.5 x 1	200mm	6/m2	73
MATRIX 2: SUN STREET FRONTAGE MIX						Total Area: 67m2
Abb	<i>Anigozanthos 'Bush Blitz'</i>	Kangaroo Paw	1 x 0.5	200mm	6/m2	67
Bsb	<i>Banksia spinulosa 'Birthday Candles'</i>	Banksia	0.5 x 1	200mm	4/m2	45
Bmb	<i>Brachyscome multifida 'Break O Day'</i>	Cut Leaf Daisy	0.3 x 0.5	200mm	6/m2	67
Cgl	<i>Carpobrotus glaucescens</i>	Pigface	0.3 x 2	200mm	6/m2	67
Csr	<i>Crocea saligna 'Rosy Glow'</i>	Crocea	1 x 1	200mm	6/m2	67
Llo	<i>Lomandra longifolia</i>	Siny-Head Mat-Rush	1 x 1	200mm	6/m2	67
MATRIX 3: SHADE STREET FRONTAGE MIX						Total Area: 64m2
Dca	<i>Dianella caerulea</i>	Blue Flax Lily	1 x 2	200mm	6/m2	77
Hvi	<i>Hardenbergia violacea 'Sea of Purple'</i>	Native Sarsparilla	0.8 x 3	200mm	3/m2	38
Hfg	<i>Hymenosporum flavum 'Gold Nugget'</i>	Native Frangipani	0.75 x 0.75	200mm	4/m2	51
Lme	<i>Liriope muscari 'Evergreen Giant'</i>	Lilyturf	0.6 x 0.6	200mm	4/m2	51
Vhe	<i>Viola hederacea</i>	Native Violet	0.2 x 1	200mm	6/m2	77
MATRIX 4: SENSORY GARDEN MIX						Total Area: 48m2
Aae	<i>Adiantum aethiopicum</i>	Maidenhair Fern	0.8 x 0.9	200mm	6/m2	36
Aau	<i>Ajuga australis</i>	Australian Bugle	0.3 x 0.3	200mm	6/m2	36
Cze	<i>Calathea zebrina</i>	Zebra Plant	0.1 x 0.6	200mm	4/m2	24
Dre	<i>Dichondra repens</i>	Kidney Weed	0.1 x spreading	200mm	6/m2	36
Das	<i>Doodia aspera</i>	Prickly Rasp Fern	0.4 x 0.6	200mm	4/m2	24
Lme	<i>Liriope muscari 'Evergreen Giant'</i>	Lilyturf	0.6 x 0.6	200mm	4/m2	24
Mdi	<i>Microsorium diversifolium</i>	Kangaroo Paw Fern	0.5 x 0.5	200mm	6/m2	36
Sgo	<i>Strobilanthes gossypinus</i>	Pewter Plant	1 x 1	200mm	4/m2	24
MATRIX 5: EDIBLE GARDEN MIX						Total Area: 10m2
Asc	<i>Allium schoenoparsum</i>	Chives	0.4 x 0.6	200mm	3/m2	4
Anu	<i>Atriplex nummularia</i>	Old Man Saltbush	1 x 1	200mm	1/m2	2
Mau	<i>Mentha australis</i>	Native River Mint	0.7 x 1	200mm	2/m2	3
Pin	<i>Prostanthera incisa</i>	Cut-Leaf Mintbush	2 x 1	200mm	1/m2	2
Rof	<i>Rosmarinus officinalis</i>	Rosemary	1.5 x 1	200mm	1/m2	2
Tte	<i>Tetragonia tetragonioides</i>	Warrigal Greens	0.3 x 0.3	200mm	4/m2	6
Tvu	<i>Thymus vulgaris</i>	Garden Thyme	0.2 x 0.3	200mm	4/m2	6

LEVEL 30 ROOFTOP

TREES						
Aal	<i>Archontophoenix alexandrae</i>	Alexander Palm	25 X 4	Ex. Ground (3m clear Trunk)	AS SHOWN	3
Bis	<i>Banksia integrifolia 'Sentinel'</i>	Coastal Banksia	4 x 2	100L	AS SHOWN	2
Eie	<i>Eucalyptus leucoxylon 'Euky Dwarf'</i>	Euky Dwarf	6 x 4	100L	AS SHOWN	1
Wfs	<i>Waterhousea floribunda 'Sweeper'</i>	Sweeper Lily Pilly	10 x 5	400L	AS SHOWN	2
SHRUBS						
Cgw	<i>Casuarina 'Green Wave'</i>	Green Wave	1.5 x 1.5	300mm	AS SHOWN	9
Cal	<i>Correa alba</i>	White Correa	1.5 x 1.5	300mm	AS SHOWN	7
Ecw	<i>Euphorbia characias 'Wulfenii'</i>	Mediterranean Spurge	1.2 x 1.2	300mm	AS SHOWN	8
Pmm	<i>Pittosporum 'Miss Muffet'</i>	Miss Muffet	1 x 1.5	300mm	AS SHOWN	19
Wfb	<i>Westringia fruticosa 'Blue Gem'</i>	Coastal Rosemary	1.5 x 1.0	300mm	AS SHOWN	18
SUCCULENTS						
Cab	<i>Crassula arborescens 'Bluebird'</i>	Silver Dollar Jade	1 x 1	300mm	AS SHOWN	27
Cmc	<i>Crassula undulatifolia 'Max Cook'</i>	Max Cook	1 x 1	300mm	AS SHOWN	32
Kbr	<i>Kalanchoe bracteata</i>	Kalanchoe Silver Spoons	1 x 1	300mm	AS SHOWN	37
MATRIX 6: ROOFTOP GROUNDCOVERS MIX						Total Area: 31m2
Bsb	<i>Banksia spinulosa 'Birthday Candles'</i>	Banksia	0.5 x 1	200mm	4/m2	18
Cgc	<i>Casuarina glauca 'Cousin It'</i>	Cousin It She-Oak	0.2 x 2	200mm	6/m2	27
Das	<i>Dichondra argentea 'Silver Falls'</i>	Silver Nickel Vine	0.1 x spreading	200mm	6/m2	27
Lcs	<i>Lomandra confertifolia 'Seascape'</i>	Knobby Club Rush	1 x 2	200mm	4/m2	18
Lit	<i>Lomandra 'Lime Tuff'</i>	Mat Rush	0.6 x 0.6	200mm	6/m2	27
Rpr	<i>Rosmarinus prostratus</i>	Prostrate Rosemary	0.3 x 1.2	200mm	4/m2	18
Sse	<i>Senecio serpens</i>	Blue Chalksticks	0.3 x 0.9	200mm	6/m2	27
MATRIX 7: POOL EDGES MIX						Total Area: 13m2
Sse	<i>Senecio serpens</i>	Blue Chalksticks	0.3 x 0.9	200mm	6/m2	39
Fge	<i>Festuca glauca 'Elijah Blue'</i>	Blue Fescue	0.2 x 0.2	200mm	6/m2	39

Copyright remains the property of Arcadia Design Group Pty Ltd. Use only figured dimensions. Any other required dimensions are to be referred to and supplied by the landscape architect. All discrepancies to be referred to the project manager and Arcadia Design Group Pty Ltd prior to construction. Ensure compliance with the Building Code of Australia and all relevant Australian Standards and Authority requirements.

B	SSDA ISSUE	SS/JS	NW	17.12.25
A	SSDA DRAFT	SS/JS	NW	26.11.25
Issue	Revision	Description	Drawn	Check Date

Not for Construction

Project
16 - 20 Old Castle Hill Road
 Castle Hill, NSW
 SSDA

Client Name



Drawing No. Drawing Name
L-400 Softworks Schedule

Job No. 24-1064
 Issue B
 Scale

Sydney, Suite 70, Jones Bay Wharf, 26-32 Pirrama Road, Pyrmont NSW 2009
 E:sydney@arcadia.com.au
 T:02 8571 2900



Copyright remains the property of Arcadia Design Group Pty Ltd. Use only figured dimensions. Any other required dimensions are to be referred to and supplied by the landscape architect. All discrepancies to be referred to the project manager and Arcadia Design Group Pty Ltd prior to construction. Ensure compliance with the Building Code of Australia and all relevant Australian Standards and Authority requirements.

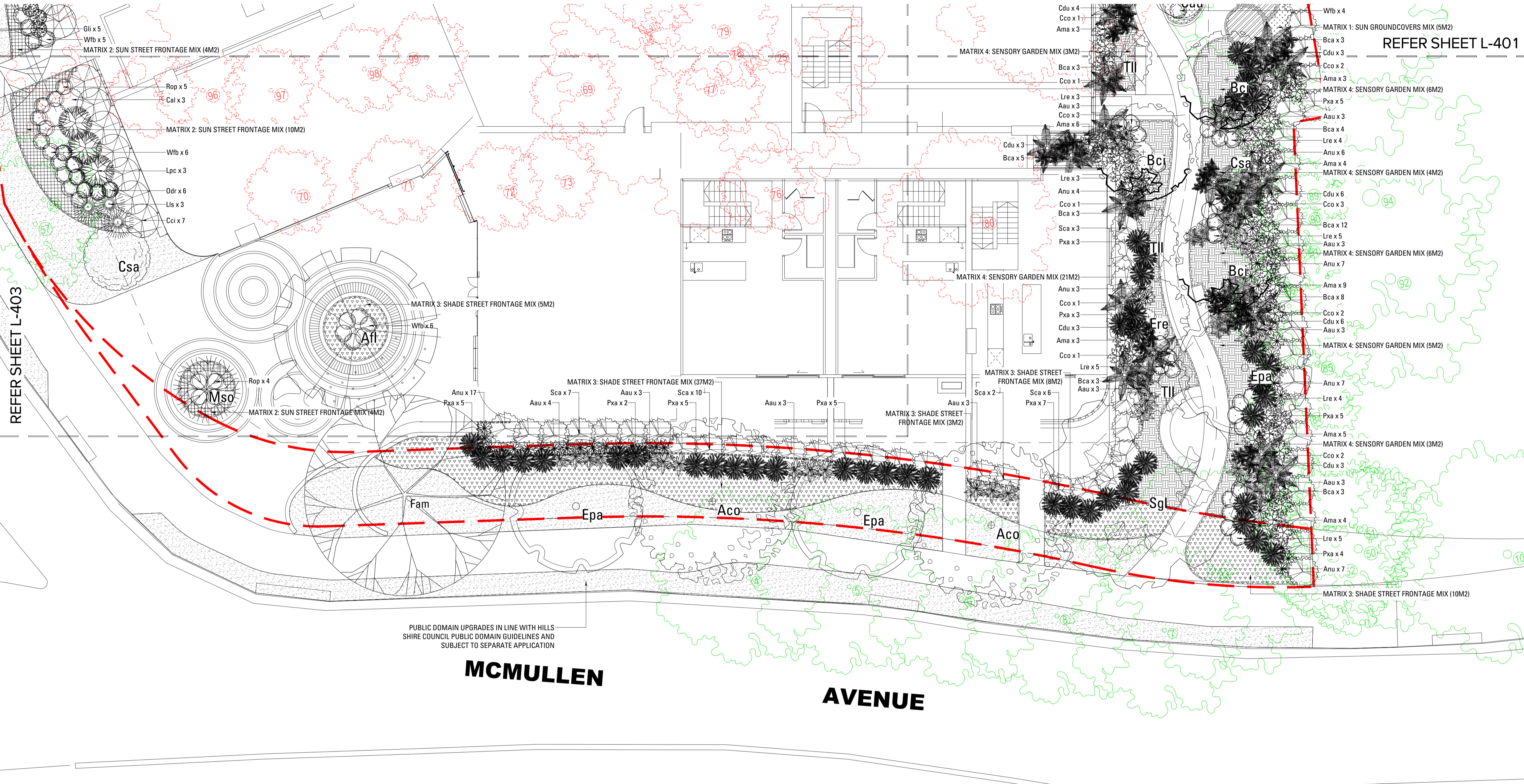
LEGEND - GROUND FLOOR LEVEL 1

- TREES
- Fax - FRANKLINIA AXILLARIS
 - Ac - ANGOPHORA COSTATA
 - Epa - EUCALYPTUS PANICULATA
 - Sgl - SYNCARPIA GLOMULIFERA
 - Fam - FRAXINUS AMERICANA
 - Afl - AGONIS FLEXUOSA
 - Csa - CALLISTMON VIMINALIS
 - Cau - CITRUS AUSTRALIASICA
 - Cfs - CORYMBIA FICIFOLIA 'SUMMER BEAUTY'
 - Bci - BACKHOUSIA CITRIFLORA
 - Ere - ELAEOCARPUS RETICULATUS
 - Mso - MAGNOLIA SOULANGIANA
 - Tl - TRISTANOPSIS LAURINA
- SUN SHRUBS
- Bru - BAUERA RUBROIDES
 - Cci - CALLISTEMON CITRINUS
 - Cal - CORREA ALBA
 - Gli - GREVILLEA LINEARIFOLIA
 - Lls - LEPTOSPERMUM LAEVIGATUM 'SHORE TU'
 - Lpc - LEPTOSPERMUM POLYGALIFOLIUM 'CARI'
 - Mth - MELALEUCA THYMIFOLIA
 - Odr - OZOTHAMNUS DIOSMIFOLIUS 'RADIANT'
 - Rop - RHAPHOLEPIS INDICA 'ORIENTAL PEARL'
 - Sca - SYZYGIUM 'CASCADE'
 - Wfb - WESTRINGIA FRUTICOSA 'BLUE GEM'
- SHADE SHRUBS
- Ama - ALOCASIA MACRORRHIZA
 - Anu - ALPINIA NUTANS
 - Lre - LIGULARIA RENIFORMIS
 - Pxa - PHILODENDRON 'XANADU'
- FERNS
- Aau - ASPLENIUM AUSTRALASICUM
 - Bca - BLECHNUM CARTILAGINEUM
 - Cdu - CALDCLAENA DUBIA
 - Cco - CYATHEA COOPERI
- MATRICES
- MATRIX 1 - SUN GROUNDCOVERS MIX (3M2)
 - MATRIX 2 - SUN STREET FRONTAGE MIX
 - MATRIX 3 - SHADE STREET FRONTAGE MIX
 - MATRIX 4 - SENSORY GARDEN MIX
 - MATRIX 5 - EDIBLE GARDEN MIX
- | | | | | |
|---|------------|----------|-------------|----------|
| B | SSDA ISSUE | SS/SJ | NW | 17.12.25 |
| A | SSDA DRAFT | SS/SJ | NW | 26.11.25 |
| | Issue | Revision | Description | Drawn |
| | | | | Check |
| | | | | Date |
- Not for Construction
- Project
16 - 20 Old Castle Hill Road
 Castle Hill, NSW
 SSDA
- Client Name
URBAN PROPERTY
- Drawing No. **L-401** Drawing Name **Softworks Plan Ground Floor/Level 1**
- Job No. 24-1064 Issue B Scale 1:100 @ A1
- Sydney, Suite 70, Jones Bay Wharf, 26-32 Pirrama Road, Pyrmont NSW 2009 E:sydney@arcadia.com.au T:02 8571 2900
- ARCADIA**

REFER SHEET L-403



REFER SHEET L-402



Copyright remains the property of Arcadia Design Group Pty Ltd. Use only figured dimensions. Any other required dimensions are to be referred to and supplied by the landscape architect. All discrepancies to be referred to the project manager and Arcadia Design Group Pty Ltd prior to construction. Ensure compliance with the Building Code of Australia and all relevant Australian Standards and Authority requirements.

LEGEND - GROUND FLOOR LEVEL 1

- TREES**
- Fax - FRANKLINIA AXILLARIS
 - Ac - ANGOPHORA COSTATA
 - Epa - EUCALYPTUS PANICULATA
 - Sgl - SYNCARPIA GLOMULIFERA
 - Fam - FRAXINUS AMERICANA
 - Afl - AGONIS FLEXUOSA
 - Csa - CALLISTEMON VIMINALIS
 - Cau - CITRUS AUSTRALIASICA
 - Cfs - CORYMBIA FICIFOLIA 'SUMMER BEAUTY'
 - Bcl - BACKHOUSIA CITRIDODORA
 - Ere - ELAEOCARPUS RETICULATUS
 - Mso - MAGNOLIA SOULANGIANA
 - Tl - TRISTANOPSIS LAURINA
- SUN SHRUBS**
- Bru - BAUERA RUBROIDES
 - Ccl - CALLISTEMON CITRINUS
 - Cal - CORREA ALBA
 - Gli - GREVILLEA LINEARIFOLIA
 - Lls - LEPTOSPERMUM LAEVIGATUM 'SHORE TU'
 - Lpc - LEPTOSPERMUM POLYGALIFOLIUM 'CARL'
 - Mth - MELALEUCA THYMIFOLIA
 - Odr - OZOTHAMNUS DIOSMIFOLIUS 'RADIANT'
 - Rop - RHAPHIOPHLEPS INDICA 'ORIENTAL PEARL'
 - Sca - SYZYGIUM 'CASCADE'
 - Wfb - WESTRINGIA FRUTICOSA 'BLUE GEM'
- SHADE SHRUBS**
- Ama - ALOCASIA MACRORRHIZA
 - Anu - ALPINIA NUTANS
 - Lre - LIGULARIA RENIFORMIS
 - Pxa - PHILLODENDRON 'XANADU'
- FERNS**
- Aau - ASPLENIUM AUSTRALASICUM
 - Bca - BLECHNUM CARTILAGINEUM
 - Cdu - CALDCLAENA DUBIA
 - Cco - CYATHEA COOPERI
- MATRICES**
- MATRIX 1 - SUN GROUNDCOVERS MIX
 - MATRIX 2 - SUN STREET FRONTAGE MIX
 - MATRIX 3 - SHADE STREET FRONTAGE MIX
 - MATRIX 4 - SENSORY GARDEN MIX
 - MATRIX 5 - EDIBLE GARDEN MIX

B	SSDA ISSUE	SS/JS NW	17.12.25
A	SSDA DRAFT	SS/JS NW	26.11.25
	Issue	Revision Description	Drawn Check Date

Not for Construction

Project
16 - 20 Old Castle Hill Road
 Castle Hill, NSW
 SSDA

Client Name
URBAN PROPERTY

Drawing No. **L-402** Drawing Name **Softworks Plan Ground Floor/Level 1**

Job No. 24-1064 Issue B Scale 1:100 @ A1

Sydney, Suite 70, Jones Bay Wharf, 26-32 Pirrama Road, Pyrmont NSW 2009 E sydney@arcadia.com.au T 02 8571 2900



GARTHOWEN

PUBLIC DOMAIN UPGRADES IN LINE WITH HILLS SHIRE COUNCIL PUBLIC DOMAIN GUIDELINES AND SUBJECT TO SEPARATE APPLICATION



Copyright remains the property of Arcadia Design Group Pty Ltd. Use only figured dimensions. Any other required dimensions are to be referred to and supplied by the landscape architect. All discrepancies to be referred to the project manager and Arcadia Design Group Pty Ltd prior to construction. Ensure compliance with the Building Code of Australia and all relevant Australian Standards and Authority requirements.

LEGEND - GROUND FLOOR LEVEL 1

- TREES**
- Fax - FRANKLINIA AXILLARIS
 - Ac - ANGOPHORA COSTATA
 - Epa - EUCALYPTUS PANICULATA
 - Sgl - SYNCARPIA GLOMULIFERA
 - Fam - FRAXINUS AMERICANA
 - Afl - AGONIS FLEXUOSA
 - Csa - CALLISTMON VIMINALIS
 - Cau - CITRUS AUSTRALIASICA
 - Cfs - CORYMBIA FICIFOLIA 'SUMMER BEAUTY'
 - Bci - BACKHOUSIA CITRIFLORA
 - Ere - ELAEOCARPUS RETICULATUS
 - Mso - MAGNOLIA SOULANGEANA
 - Tl - TRISTANOPSIS LAURINA
- SUN SHRUBS**
- Bru - BAUERA RUBROIDES
 - Cci - CALLISTEMON CITRINUS
 - Cal - CORREA ALBA
 - Gli - GREVILLEA LINEARIFOLIA
 - Lls - LEPTOSPERMUM LAEVIGATUM 'SHORE TU'
 - Lpc - LEPTOSPERMUM POLYGALIFOLIUM 'CARI'
 - Mth - MELALEUCA THYMIFOLIA
 - Odr - OZOTHAMNUS DIOSMIFOLIUS 'RADIANT'
 - Rop - RHAPHOLEPIS INDICA 'ORIENTAL PEARL'
 - Sca - SYZYGIUM 'CASCADE'
 - Wfb - WESTRINGIA FRUTICOSA 'BLUE GEM'
- SHADE SHRUBS**
- Ama - ALOCASIA MACRORRHIZA
 - Anu - ALPINIA NUTANS
 - Lre - LIGULARIA RENIFORMIS
 - Pxa - PHILODENDRON 'XANADU'
- FERNS**
- Aau - ASPLENIUM AUSTRALASICUM
 - Bca - BLECHNUM CARTILAGINEUM
 - Cdu - CALDCLAENA DUBIA
 - Cco - CYATHEA COOPERI
- MATRICES**
- MATRIX 1 - SUN GROUNDCOVERS MIX
 - MATRIX 2 - SUN STREET FRONTAGE MIX
 - MATRIX 3 - SHADE STREET FRONTAGE MIX
 - MATRIX 4 - SENSORY GARDEN MIX
 - MATRIX 5 - EDIBLE GARDEN MIX

Issue	Revision	Description	Drawn	Check	Date
B	SSDA	ISSUE	SS/JS	NW	17.12.25
A	SSDA	DRAFT	SS/JS	NW	26.11.25

Not for Construction

Project
16 - 20 Old Castle Hill Road
 Castle Hill, NSW
 SSDA

Client Name
URBAN PROPERTY

Drawing No. **L-403** Drawing Name **Softworks Plan Ground Floor/Level 1**

Job No. 24-1064
 Issue B
 Scale 1:100 @ A1

Sydney, Suite 70, Jones Bay Wharf, 26-32 Pirrama Road, Pyrmont NSW 2009
 E: sydney@arcadia.com.au
 T: 02 8571 2900



HILL CASTLE

OLD

REFER SHEET L-401

REFER SHEET L-402

PUBLIC DOMAIN UPGRADES IN LINE WITH HILLS SHIRE COUNCIL PUBLIC DOMAIN GUIDELINES AND SUBJECT TO SEPARATE APPLICATION

MATRIX 3: SHADE STREET FRONTAGE MIX (5M2)

MATRIX 3: SHADE STREET FRONTAGE MIX (37M2)

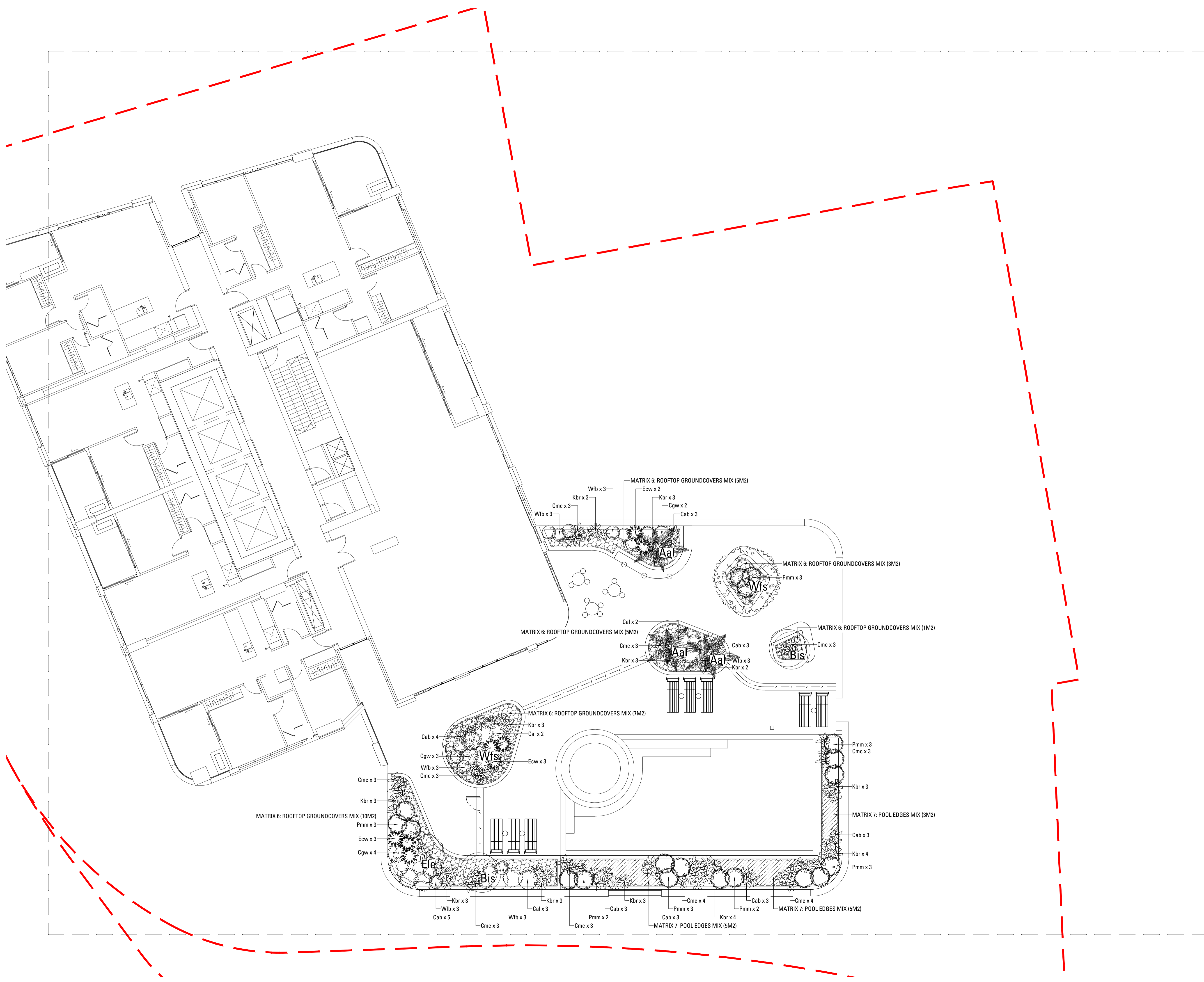
MATRIX 2: SUN STREET FRONTAGE MIX (4M2)

MATRIX 1: SUN GROUNDCOVERS MIX

Copyright remains the property of Arcadia Design Group Pty Ltd. Use only figured dimensions. Any other required dimensions are to be referred to and supplied by the landscape architect. All discrepancies to be referred to the project manager and Arcadia Design Group Pty Ltd prior to construction. Ensure compliance with the Building Code of Australia and all relevant Australian Standards and Authority requirements.

LEGEND - LEVEL 30 ROOFTOP

- TREES & PALMS
- Aal - ARCHONTOPHOENIX ALEXANDRAE
 - Bis - BANKSIA INTEGRIFOLIA 'SENTINEL'
 - Ele - EUCALYPTUS LEUCOXYLON 'EUKY DWARF'
 - Wfs - WATERHOUSEA FLORIBUNDA 'SWEEPER'
- SHRUBS
- Cgw - CASUARINA 'GREENWAVE'
 - Cal - CORREA ALBA
 - Ecw - EUPHORBIA CHARACIAS 'WULFENII'
 - Pmm - PITTOSPORUM TOBIRA 'MISS MUFFET'
 - Wfb - WESTRINGIA FRUTICOSA 'BLUE GEM'
- SUCCULENTS
- Cab - CRASSULA ARBORESCENS 'BLUEBIRD'
 - Cmc - CRASSULA UNIDENTIFOLIA 'MAX COOK'
 - Kbr - KALANCHOE BRACTEATA
- MATRICES
- MATRIX 6: ROOFTOP GROUNDCOVERS MIX
 - MATRIX 7: POOL EDGES MIX



Issue	Revision Description	Drawn	Check	Date
B	SSDA ISSUE	SS/JS	NW	17.12.25
A	SSDA DRAFT	SS/JS	NW	26.11.25

Not for Construction

Project
16 - 20 Old Castle Hill Road
 Castle Hill, NSW
 SSDA
 Client Name

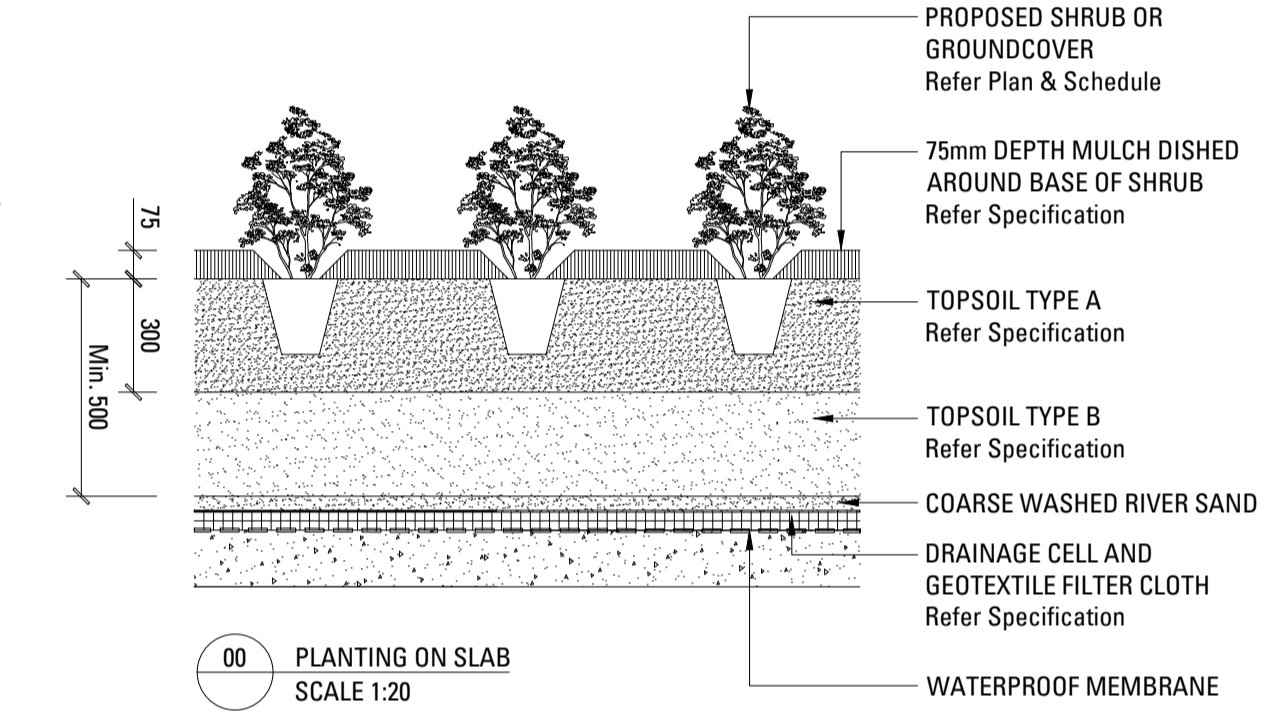
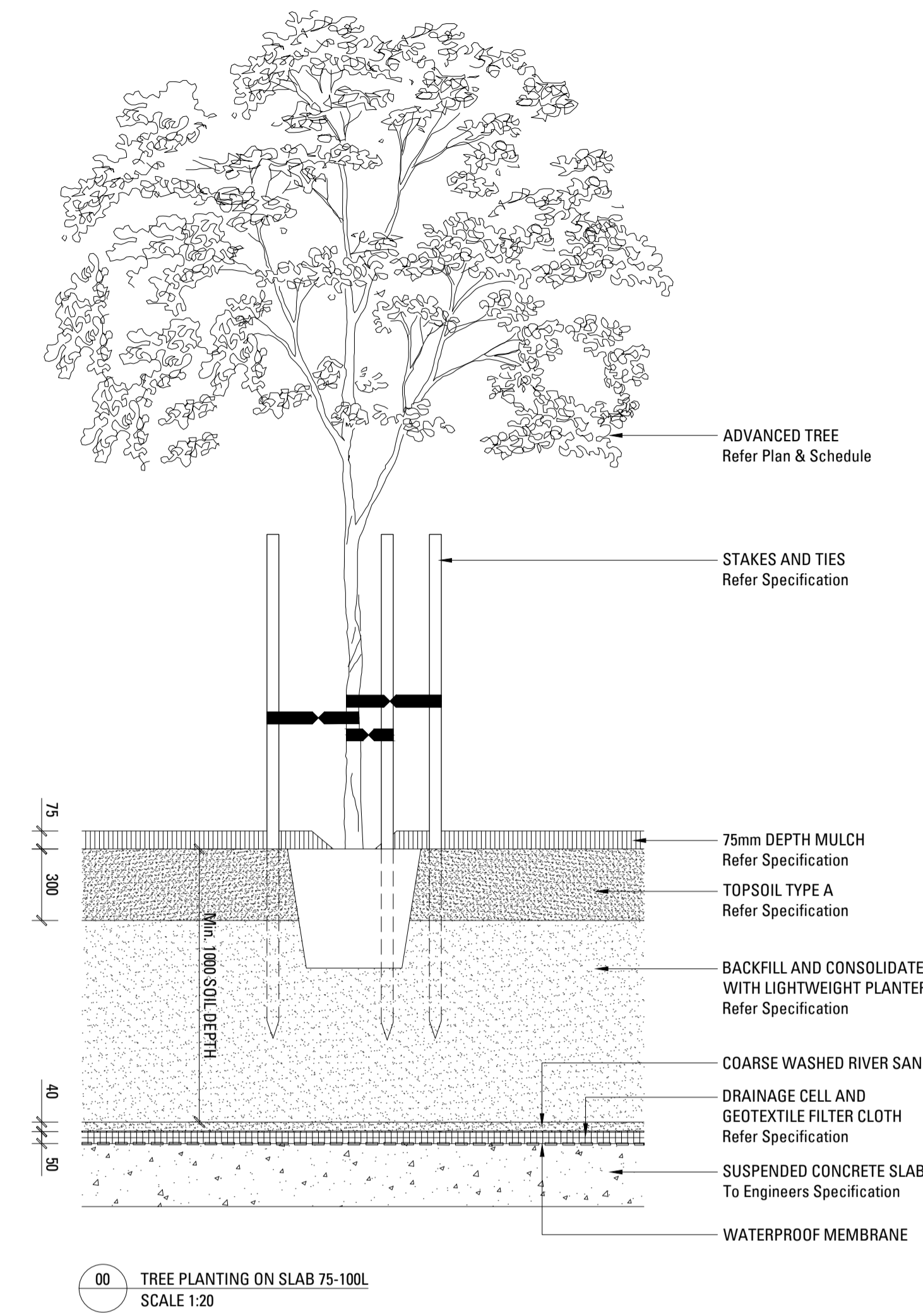
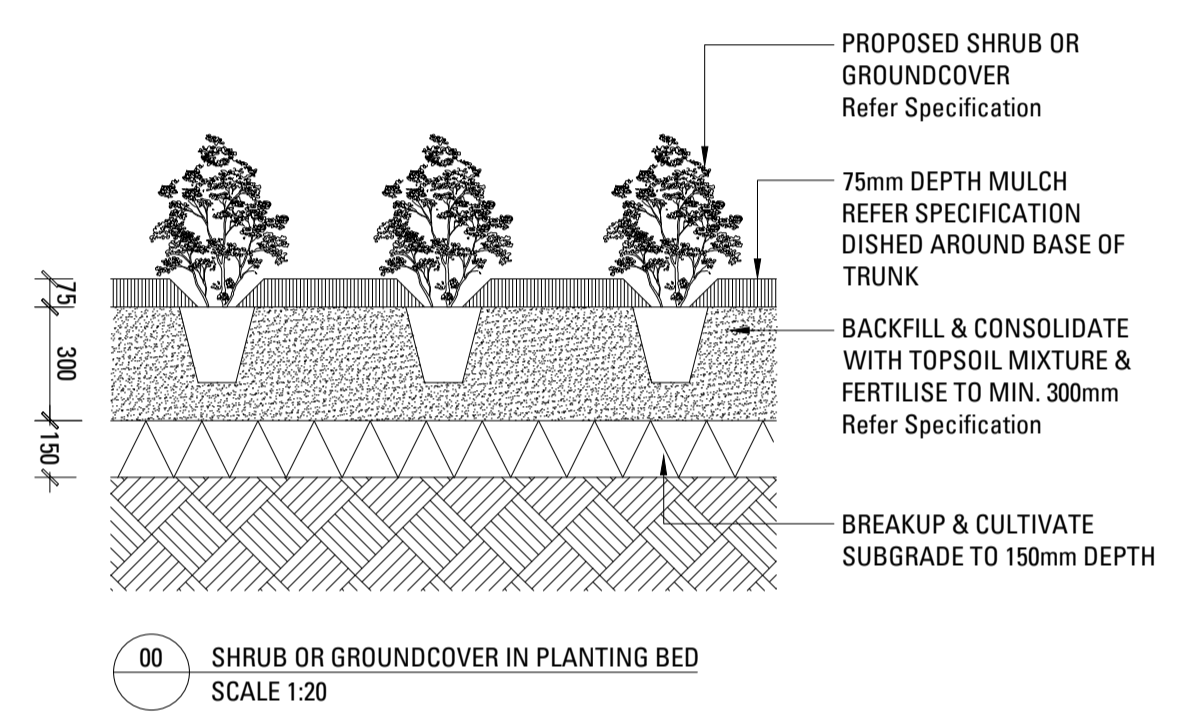
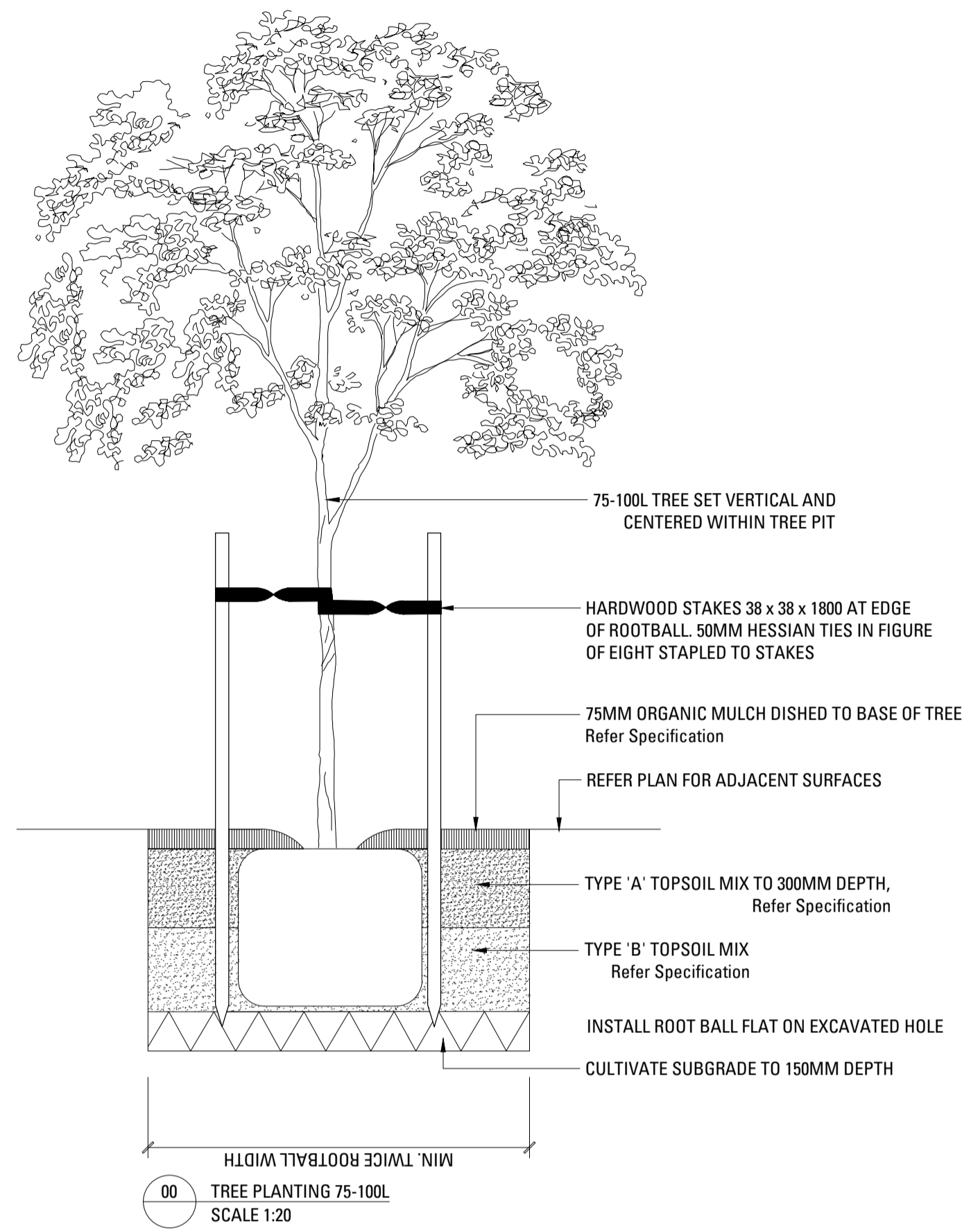
URBAN
 PROPERTY

Drawing No. **L-404** Drawing Name **Softworks Plan Level 30 Rooftop**

Job No. 24-1064 Issue B Scale 1:100 @ A1

Sydney, Suite 70, Jones Bay Wharf, 26-32 Pirrama Road, Pyrmont NSW 2009
 E: sydney@arcadiad.com.au
 T: 02 8571 2900

ARCADIA



B	SSDA ISSUE	SS/JS	NW	17.12.25
A	SSDA DRAFT	SS/JS	NW	26.11.25
	Issue	Revision	Description	Drawn Check Date

Not for Construction

Project
16 - 20 Old Castle Hill Road
 Castle Hill, NSW
 SSDA

Client Name
URBAN
 PROPERTY

Drawing No. Drawing Name
L-601 Softworks Details

Job No. 24-1064
 Issue B
 Scale

Sydney, Suite 70, Jones Bay Wharf, 26-32 Pirrama Road, Pyrmont NSW 2009
 E sydney@arcadiad.com.au
 T 02 8571 2900

LANDSCAPE SPECIFICATION NOTES

SERVICES

BEFORE LANDSCAPE WORK IS COMMENCED THE LANDSCAPE CONTRACTOR IS TO ESTABLISH THE POSITION OF ALL SERVICE LINES AND ENSURE TREE PLANTING IS CARRIED OUT AT LEAST 3 METRES AWAY FROM THESE SERVICES. SERVICE LIDS, VENTS AND HYDRANTS SHALL BE LEFT EXPOSED AND NOT COVERED BY ANY LANDSCAPE FINISHES (TURFING, PAVING, GARDEN BEDS ETC.) FINISH ADJOINING SURFACES FLUSH WITH PIT LIDS.

ABORIST MANAGEMENT OF TREE PROTECTION

A QUALIFIED AND APPROVED ABORIST IS TO BE CONTRACTED TO UNDERTAKE OR MANAGE THE INSTALLATION OF PROTECTIVE FENCING, AND TO UNDERTAKE SUCH MEASURES AS HE DEEMS APPROPRIATE TO PRESERVE THE SUBJECT TREES TO BE RETAINED. THE ARBORIST IS TO BE RETAINED FOR THE ENTIRE CONTRACT PERIOD TO UNDERTAKE ONGOING MANAGEMENT AND REVIEW OF THE TREES.

DRAINAGE CELL AND FILTER FABRIC

FOR ON-SLAB AREAS INSTALL AN APPROVED 'DRAINAGE CELL' PRODUCT TO COMPREHENSIVELY COVER THE BOTTOM OF ALL PLANTERS. OVER DRAINAGE CELL TO ON-SLAB AREAS, A POLYFELT GEOTEXTILE LINING (AS SUPPLIED BY 'POLYFELT TS' OR APPROVED EQUIVALENT) IS TO BE INSTALLED TO COVER THE BOTTOM OF ALL PLANTERS, TURNED UP 300MM AND TAPED TO THE PLANTER SIDES TO ENSURE SOIL MIX DOES NOT ESCAPE INTO DRAINAGE OUTLETS/HOLES. INSTALL MIN. 50MM COARSE RIVER SAND OVER ALL GEOTEXTILE LINING PRIOR TO INSTALLATION OF SOIL MIX.

PLANTING MIXTURE

SHALL BE HOMOGENOUS BLEND OF SOIL AND ADDITIVES IN THE FOLLOWING PROPORTIONS:

EXISTING SITE SOIL IF SUITABLE OR

IMPORTED TOPSOIL 50%

COMPOST 30%

D/W SAND 20%

SOIL TESTING OF EXISTING SITE SOIL IS TO BE UNDERTAKEN TO ASSESS SUITABILITY OF USE AS PLANTING TOPSOIL AND COMPLIANCE WITH AUSTRALIAN STANDARDS.

MULCH APPLICATION

PLACE MULCH TO THE REQUIRED DEPTH, (REFER TO DRAWINGS) CLEAR OF PLANT STEMS, AND RAKE TO AN EVEN SURFACE FINISHING 25MM BELOW ADJOINING LEVELS. ENSURE MULCH IS WATERED IN AND TAMPED DOWN DURING INSTALLATION.

MULCH TYPE

PINE BARK: FROM MATURE TREES, GRADED IN SIZE FROM 15MM TO 30MM, FREE FROM WOOD SLIVERS. DARK BROWN IN COLOUR AND TEXTURE.

COMPOST

SHALL BE WELL ROTTED VEGETATIVE MATERIAL OR ANIMAL MANURE, OR OTHER APPROVED MATERIAL, FREE FROM HARMFUL CHEMICALS. GRASS AND WEED GROWTH AND WITH NEUTRAL PH. PROVIDE A CERTIFICATE OF PROOF OF PH UPON REQUEST.

PLANT MATERIAL

ALL PLANTS SUPPLIED ARE TO CONFORM WITH THOSE SPECIES LISTED IN THE PLANT SCHEDULE ON THE DRAWINGS. GENERALLY PLANTS SHALL BE VIGOROUS, WELL ESTABLISHED, HARDENED OFF, OF GOOD FORM CONSISTENT WITH SPECIES OR VARIETY, NOT SOFT OR FORCED, FREE FROM DISEASE OR INSECT PESTS WITH LARGE HEALTHY ROOT SYSTEMS AND NO EVIDENCE OF HAVING BEEN RESTRICTED OR DAMAGED. TREES SHALL HAVE A LEADING SHOOT. IMMEDIATELY REJECT DRIED OUT, DAMAGED OR UNHEALTHY PLANT MATERIAL BEFORE PLANTING. ALL STOCK IS TO BE CONTAINER GROWN FOR A MINIMUM OF SIX (6) MONTHS PRIOR TO DELIVERY TO SITE

FERTILISER MASS PLANTING AREAS:

FERTILISER SHALL BE 'NUTRICOTE' OR APPROVED EQUIVALENT IN GRANULE FORM INTENDED FOR SLOW RELEASE OF PLANT NUTRIENTS OVER A PERIOD OF APPROXIMATELY NINE MONTHS. THOROUGHLY MIX FERTILISER WITH PLANTING MIXTURE AT THE RECOMMENDED RATE, PRIOR TO INSTALLING PLANTS.

TURF

SHALL BE SIR WALTER BUFFALO. SHIRLEYS NO. 17 OR APPROVED EQUAL LAWN FOOD SHALL BE THOROUGHLY MIXED INTO THE TOPSOIL PRIOR TO PLACING TURF.

TREES IN GRASS AND SUPER ADVANCED TREES:

PELLETS SHALL BE IN THE FORM INTENDED TO UNIFORMLY RELEASE PLANT FOOD ELEMENTS FOR A PERIOD OF APPROXIMATELY NINE MONTHS EQUAL TO SHIRLEYS KOKEI PELLETS, ANALYSIS 6.3:1.8:2.9. KOKEI PELLETS SHALL BE PLACED AT THE TIME OF PLANTING TO THE BASE OF THE PLANT, 50MM MINIMUM FROM THE ROOT BALL AT A RATE OF TWO PELLETS PER 300MM OF TOP GROWTH TO A MAXIMUM OF 8 PELLETS PER TREE.

STAKING AND TYING

STAKES SHALL BE STRAIGHT HARDWOOD, FREE FROM KNOTS AND TWISTS, POINTED AT ONE END AND

SIZED ACCORDING TO SIZE

OF PLANTS TO BE STAKED.

A. 5-15 LITRE SIZE PLANT 1X(1200X25X25MM)

B. 35-75 LITRE SIZE PLANT 2X(1500X38X38MM)

C. 100-GREATER THAN 200LITRE 3X(1800X50X50MM)

TIES SHALL BE 50MM WIDE HESSIAN WEBBING OR APPROVED EQUIVALENT NAILED OR STAPLED TO STAKE. DRIVE STAKES A MINIMUM ONE THIRD OF THEIR LENGTH, AVOIDING DAMAGE TO THE ROOT SYSTEM, ON THE WINDWARD SIDE OF THE PLANT.

IRRIGATION SYSTEM

SUPPLY AN AUTOMATIC WATERING SYSTEM USING 'TORO IRRIGATION SYSTEM' OR SIMILAR APPROVED, WITH MICRO-JET SPRINKLER HEADS AND LOW DENSITY, RUBBER MODIFIED POLYPROPYLENE RETICULATION, TO INCLUDE FILTERS, BENDS JUNCTIONS, ENDS AND OTHER ANCILLARY EQUIPMENT. THE LANDSCAPER SHALL NOMINATE HIS SOURCE OF SUPPLY FOR THE WATERING SYSTEM AND OBTAIN APPROVAL FROM THE SUPERINTENDENT BEFORE PLACING ORDERS FOR EQUIPMENT OR SUPPLY.

A SCHEMATIC PLAN OF THE PROPOSED IRRIGATION SYSTEM IS TO BE PREPARED BY THE CONTRACTOR, SHOWING SOLENOIDS, PIPE DIAMETERS, AND ALL NOZZLE AND TRICKLE ATTACHMENT TYPES (INCLUDING SPRAY/HEAD ANGLE), FOR REVIEW BY THE SUPERINTENDENT PRIOR TO INSTALLATION

THE CONTRACTOR IS TO LIASE WITH THE HYDRAULIC ENGINEER AND COUNCIL AS NECESSARY, TO ENSURE THE THE IRRIGATION SYSTEM CONFORMS WITH ALL THE COUNCIL AND WATER BOARD CODES AND REQUIREMENTS.

PROVIDE AN AUTOMATIC CONTROLLER THAT PROVIDES FOR TWO WEEK SCHEDULING AND HOURLY MULTI-CYCLE OPERATION. THE CONTROLLER SHALL MANUAL OVERRIDE. PROGRAMMING SHALL BE UNDERTAKEN BY THE CONTRACTOR WHO SHALL ADVISE ON THE OPERATION OF THE SYSTEM.

PROVISION OF SECURE HOUSING FOR THE AUTOMATIC IRRIGATION CONTROLLER TO BE LOCATED IN ASSOCIATION WITH THE LANDSCAPE CONTRACTOR AND LOCATION CONFIRMED BY THE SUPERINTENDENT. WIRING TO CONNECT REMOTE SOLENOID LOCATIONS IS TO BE PROVIDED. THE CONTROLLER SHALL BE LOCATED IN A DRY PLACE, PROTECTED FROM THE WEATHER, AND ALL CABLE CONNECTIONS SHALL BE MADE WITH WATERPROOF CONNECTORS.

WATER SUPPLY POINTS TO BE SUPPLIED BY BUILDER.

IT SHALL BE THE CONTRACTOR'S RESPONSIBILITY TO ENSURE AND GUARANTEE SATISFACTORY OPERATION OF THE IRRIGATION SYSTEM.

AFTER THE SYSTEM HAS BEEN INSTALLED TO THE SATISFACTION OF THE SUPERINTENDENT, THE INSTALLATION SHALL BE TESTED UNDER KNOWN WORKING CONDITIONS. ACCEPTANCE OF THE INSTALLED PLANT AND EQUIPMENT SHALL BE SUBJECT TO THESE BEING SATISFACTORY.

TREATED PINE TIMBER EDGING

TIMBER EDGE: 100 X 25MM CCA TREATED RADIATA PINE TIMBER STAKES: 50 X 50 X 500MM CCA TREATED RADIATA PINE-SHARPENED AT ONE END. INSTALL IN LOCATIONS SHOWN ON THE DRAWINGS FLUSH TO FINISHED SURFACE LEVELS.

TURF

TURF ALL LANDSCAPE AREAS AS SHOWN ON THE LANDSCAPE DRAWINGS. TURF IS TO HAVE AN EVEN THICKNESS OF NOT LESS THAN 25MM. OBTAIN TURF FROM AN APPROVED GROWER. FURNISH A WARRANTY FROM THE GROWER THAT THE TURF IS FREE FROM WEEDS AND OTHER FOREIGN MATTER. DELIVER TURF TO THE SITE WITHIN 24 HOURS OF BEING CUT, AND LAY IT WITHIN 24 HOURS OF BEING DELIVERED.

TO PREPARE GRADED AREAS TO RECEIVE TURF, EXCAVATE THE AREA AND CULTIVATE SO AS TO ALLOW FOR IMPORTING OF 100MM OF TURF UNDERLAY SOIL. REMOVE ALL STONES OVER 50MM Ø AND REMOVE ALL WEEDS AND FOREIGN MATTER. SPREAD SOIL MIX A.B.S TO A DEPTH OF 100MM AND GRADE TO APPROPRIATE LEVELS TO ACHIEVE GENERAL EVEN GRADES TO DRAINAGE OUTLETS INSTALLED BY OTHERS.

LAY THE TURF ALONG THE LAND CONTOURS WITH STAGGERED, CLOSE BUTTED JOINTS, SO THAT THE FINISHED TURF SURFACE IS FLUSH WITH ADJACENT FINISHED SURFACES OF PAVING AND THE LIKE. AS SOON AS PRACTICABLE AFTER LAYING, ROLL THE TURF WITH A ROLLER WEIGHING NOT MORE THAN 90KG PER METRE OF WIDTH FOR SANDY OR LIGHT SOILS.

WATER AS NECESSARY TO KEEP THE SOIL MOIST TO A DEPTH OF 100MM. PROTECT NEWLY TURFED AREAS AGAINST TRAFFIC UNTIL GRASS IS ESTABLISHED. FERTILISE TWO WEEKS AFTER LAYING FERTILISE A.B.S

'TOP DRESS' THE TURF WHEN IT IS ESTABLISHED TO A DEPTH OF 10MM WITH COARSE WASHED RIVER SAND. RUB THE DRESSING WELL INTO THE JOINTS AND CORRECT ANY UNEVENNESS IN THE TURF SURFACES.

LANDSCAPE MAINTENANCE PROGRAM

MAINTENANCE SHALL MEAN THE CARE AND MAINTENANCE OF THE LANDSCAPE WORKS BY ACCEPTED HORTICULTURAL PRACTICE AS RECTIFYING ANY DEFECTS THAT BECOME APPARENT IN THE LANDSCAPE WORKS UNDER NORMAL USE. THIS SHALL INCLUDE, BUT SHALL NOT BE LIMITED TO, WATERING, MOWING, FERTILISING, RESEEDING, RETURNING, WEEDING, PEST AND DISEASE CONTROL, STAKING AND TYING, REPLANTING, CULTIVATION, PRUNING, AERATING, RENOVATING, TOP DRESSING, MAINTAINING THE SITE IN A NEAT AND TIDY CONDITION AS FOLLOWS:-

GENERAL

THE LANDSCAPE CONTRACTOR SHALL MAINTAIN THE LANDSCAPE WORKS FOR THE TERM OF THE MAINTENANCE (OR PLANT ESTABLISHMENT) PERIOD TO THE SATISFACTION OF THE COUNCIL. THE LANDSCAPE CONTRACTOR SHALL ATTEND TO THE SITE ON A WEEKLY BASIS. THE MAINTENANCE PERIOD SHALL COMMENCE AT PRACTICAL COMPLETION AND CONTINUE FOR A PERIOD OF TWENTY SIX (26) WEEKS.

WATERING

GRASS, TREES AND GARDEN AREAS SHALL BE WATERED REGULARLY SO AS TO ENSURE CONTINUOUS HEALTHY GROWTH.

RUBBISH REMOVAL

DURING THE TERM OF THE MAINTENANCE PERIOD THE LANDSCAPE CONTRACTOR SHALL REMOVE RUBBISH THAT MAY OCCUR AND REOCCUR THROUGHOUT THE MAINTENANCE PERIOD. THIS WORK SHALL BE CARRIED OUT REGULARLY SO THAT AT WEEKLY INTERVALS THE AREA MAY BE OBSERVED IN A COMPLETELY CLEAN AND TIDY CONDITION.

REPLACEMENTS

THE LANDSCAPE CONTRACTOR SHALL REPLACE ALL PLANTS THAT ARE MISSING, UNHEALTHY OR DEAD AT THE LANDSCAPE CONTRACTOR'S COST. REPLACEMENTS SHALL BE OF THE SAME SIZE, QUALITY AND SPECIES AS THE PLANT THAT HAS FAILED UNLESS OTHERWISE DIRECTED BY THE LANDSCAPE ARCHITECT. REPLACEMENTS SHALL BE MADE ON A CONTINUING BASIS NOT EXCEEDING TWO (2) WEEKS AFTER THE PLANT HAS DIED OR IS SEEN TO BE MISSING.

STAKES AND TIES

THE LANDSCAPE CONTRACTOR SHALL REPLACE OR ADJUST PLANT STAKES, AND TREE GUARDS AS NECESSARY OR AS DIRECTED BY THE LANDSCAPE ARCHITECT. REMOVE STAKES AND TIES AT THE END OF THE MAINTENANCE PERIOD IF SO DIRECTED.

PRUNING

TREES AND SHRUBS SHALL BE PRUNED AS DIRECTED BY THE LANDSCAPE ARCHITECT. PRUNING WILL BE DIRECTED AT THE MAINTENANCE OF THE DENSE FOLIAGE OR MISCELLANEOUS PRUNING AND BENEFICIAL TO THE CONDITION OF THE PLANTS. ANY DAMAGED GROWTH SHALL BE PRUNED. ALL PRUNED MATERIAL SHALL BE REMOVED FROM THE SITE.

MULCHED SURFACES

ALL MULCHED SURFACES SHALL BE MAINTAINED IN A CLEAN AND TIDY CONDITION AND BE REINSTATED IF NECESSARY TO ENSURE THAT A DEPTH OF 75MM IS MAINTAINED. ENSURE MULCH IS KEPT CLEAR OF PLANT STEMS AT ALL TIMES.

PEST AND DISEASED CONTROL

THE LANDSCAPE CONTRACTOR SHALL SPRAY AGAINST INSECT AND FUNGUS INFESTATION WITH ALL SPRAYING TO BE CARRIED OUT IN ACCORDANCE WITH THE MANUFACTURER'S DIRECTIONS. REPORT ALL INSTANCES OF PESTS AND DISEASES (IMMEDIATELY THAT THEY ARE DETECTED) TO THE LANDSCAPE ARCHITECT.

GRASS AND TURF AREAS

THE LANDSCAPE CONTRACTOR SHALL MAINTAIN ALL GRASS AND TURF AREAS BY WATERING, WEEDING, DRESSING, ROLLING, MOWING, TRIMMING OR OTHER OPERATIONS AS NECESSARY. SEED AND TURF SPECIES SHALL BE THE SAME AS THE ORIGINAL SPECIFIED MIXTURE. GRASS AND TURF AREAS SHALL BE SPRAYED WITH APPROVED SELECTIVE HERBICIDE AGAINST BROAD LEAFED WEEDS AS REQUIRED BY THE LANDSCAPE ARCHITECT AND IN ACCORDANCE WITH THE MANUFACTURER'S DIRECTIONS. GRASS AND TURF AREAS SHALL BE FERTILISED ONCE A YEAR IN AUTUMN WITH 'DYNAMIC LIFTER' FOR LAWNS AT A RATE OF 20KG PER 100M². FERTILISER SHALL BE WATERED IN IMMEDIATELY AFTER APPLICATION. IRREGULARITIES IN THE GRASS AND TURF SHALL BE WATERED IN IMMEDIATELY AFTER APPLICATION. GRASS AND TURF AREAS SHALL BE KEPT MOWN TO MAINTAIN A HEALTHY AND VIGOROUS SWARD. MOWING HEIGHT: 30-50MM.

WEED ERADICATION

ERADICATE WEEDS BY ENVIRONMENTALLY ACCEPTABLE METHODS USING A NON-RESIDUAL GLYPHOSATE HERBICIDE (EG. 'ROUNDUP') IN ANY OF ITS REGISTERED FORMULAE, AT THE RECOMMENDED MAXIMUM RATE. REGULARLY REMOVE BY HAND, WEED GROWTH THAT MAY OCCUR OR RECUR THROUGHOUT GRASSED, PLANTED AND MULCHED AREAS. REMOVE WEED GROWTH FROM AN AREA 750MM DIAMETER AROUND THE BASE OF TREES IN GRASSED AREAS. CONTINUE ERADICATION THROUGHOUT THE COURSE OF THE WORKS AND DURING THE MAINTENANCE PERIOD.

SOIL SUBSIDENCE

ANY SOIL SUBSIDENCE OR EROSION WHICH MAY OCCUR AFTER THE SOIL FILLING AND PREPARATION OPERATIONS SHALL BE MADE GOOD BY THE LANDSCAPE CONTRACTOR AT NO COST TO THE CLIENT.

B	SSDA ISSUE	SS/JS	NW	17.12.25
A	SSDA DRAFT	SS/JS	NW	26.11.25

Issue	Revision	Description	Drawn	Check	Date
-------	----------	-------------	-------	-------	------

Not for Construction

Project

16 - 20 Old Castle

Hill Road

Castle Hill, NSW

SSDA

Client Name

URBAN
PROPERTY

Drawing No.	Drawing Name
L-701	Softworks Specifications

Job No. 24-1064

Issue B

Scale

Sydney, Suite 70, Jones Bay
Wharf, 26-32 Pirrama Road,
Pyrmont NSW 2009
E sydney@arcadiata.com.au
T 02 8571 2900

ARCADIA