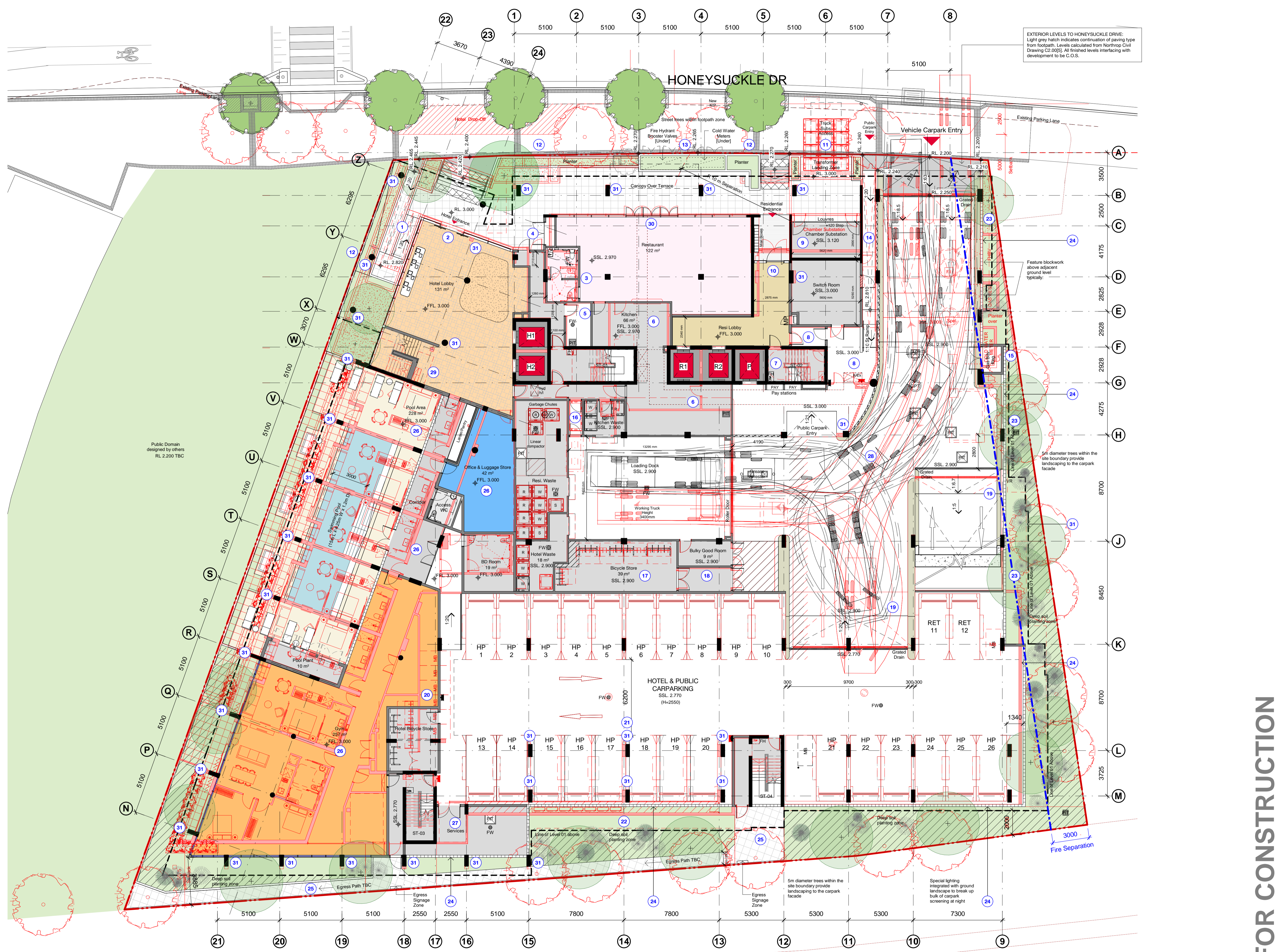


Check all dimensions and site conditions prior to commencement of any work, the purchase or ordering of any materials, fittings, plant, services or equipment and the preparation of shop drawings and/or the fabrication of any components.

Do not scale drawings - refer to figured dimensions only. Any discrepancies shall immediately be referred to the architect for clarification.

All drawings may not be reproduced or distributed without prior permission from the architect.



EXTERIOR LEVELS TO HONEYSUCKLE DRIVE:  
Light grey hatch indicates continuation of paving type from footpath. Levels calculated from Northrop Civil Drawing CZ 2005. All finished levels interfacing with development to be C.O.S.

**Schedule of Changes**

- Ground Floor**
- Hotel entry ramp adjusted to suit more gentle slope.
  - Hotel entry glazing line setback and egress entry moved over.
  - Restaurant WC and vestibule mirrored.
  - Fire Brigade Panel cupboard located at NW corner of restaurant in lieu of Fire Control Room.
  - Sprinkler Control Valves located to north of Stair ST-01.
  - Store rooms deleted. Restaurant Kitchen extends modified.
  - Stair ST-02 flipped. Egress direct to Resi. Lobby.
  - Public Entry Lobby east of Stair ST-02 modified.
  - Chamber Substation moved south. East wall extended north.
  - Resi. Lobby - Entry setback and corridor widened.
  - Transformer Landing Zone modified. Bin setdown deleted.
  - Planter box arrangement modified along Honeysockle Drive.
  - FHBV and Cold Water Meters relocated to Honeysockle Drive.
  - Pedestrian access ramp layout modified.
  - Gas Boundary Regulator moved.
  - Airlock added between Compactor Room and Kitchen Waste Room.
  - Bicycle Store - Rack layout updated.
  - Bulky Good Room extent modified.
  - Carpark ramp extends modified.
  - 5 x Motorbike parks deleted. 1 x MB moved east of Stair ST-04.
  - 6 x Hotel Parking spaces moved east.
  - Condenser zone between grids 13-16 (South carpark) relocated.
  - Facade modified to suit.
  - Eastern facade extends between grids A-K modified.
  - Facade materiality modified along East and South facade. Feature blockwork in lieu of concrete walls.
  - Egress path from Stairs ST-03 and ST-04 modified.
  - 7 x Serviced Apartments deleted between Grid N-W. Replaced with Swimming Pool and Gymnasium. Structure, landscaping, circulation arrangement, wet areas and office space modified to suit.
  - Services room modified between grid 15-18 (South carpark).
  - Portion of carpark between grid E-K lowered to SSL 2.900. Ramps affected modified to suit.
  - Common Area Stair between grids W-X widened.
  - Restaurant glazing line setback.
  - Column moved/modified.

Revision	Date	Description	Initial	Checked
1	04/03/19	ISSUED FOR DA MODIFICATION	BS	DOMA

**NOT FOR CONSTRUCTION**

**42 Honeysockle Drive,  
Newcastle**  
General Arrangement Plan  
Ground Floor

Status	SKETCH
Scale	1 : 150 @ A1
Drawn	BS
Checked	DOMA
Project No.	s12109
Plot Date	29/03/2019 5:25:27 PM
Plot File	42HONEYSUCKLEDRIVE_ARCH
Drawing no.	SK.03.101
Revision	1

Melbourne 1 Nicholson Street  
Melbourne VIC 3000 Australia  
T 03 8664 6200 F 03 8664 6300  
email mel@batesmart.com.au  
http://www.batesmart.com.au

Sydney 43 Brisbane Street  
Surry Hills NSW 2010 Australia  
T 02 8354 5100 F 02 8354 5199  
email syd@batesmart.com.au  
http://www.batesmart.com.au

Bates Smart Pty Ltd ABN 70 004 999 400







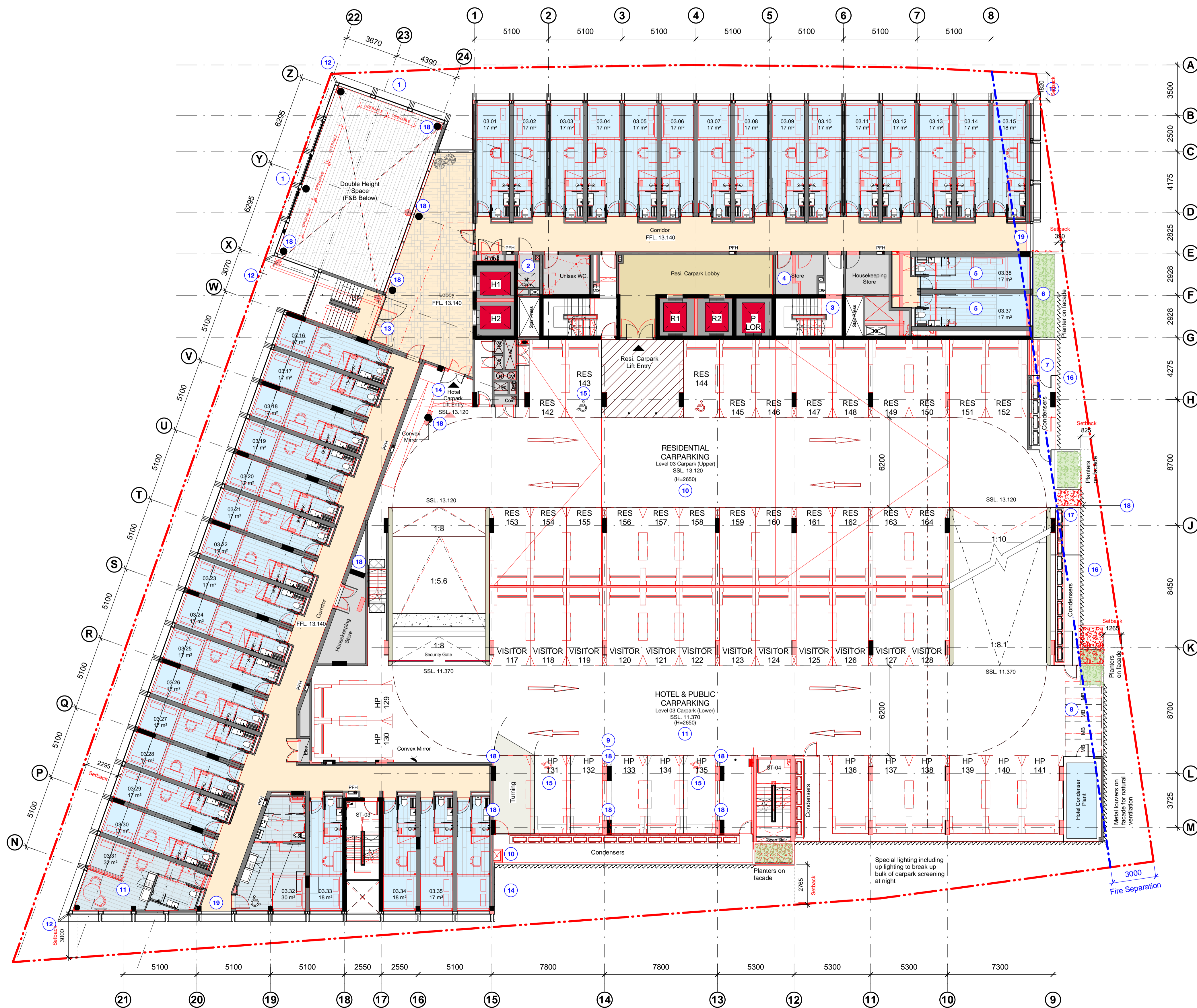
Check all dimensions and site conditions prior to commencement of any work, the purchase or ordering of any materials, fittings, plant, services or equipment and the preparation of shop drawings and or the fabrication of any components.

Do not scale drawings - refer to figured dimensions only. Any discrepancies shall immediately be referred to the architect for clarification.

All drawings may not be reproduced or distributed without prior permission from the architect.

**Schedule of Changes**

- Level 03**
1. Facade articulation modified to NW/NE Common Area
  2. Service room behind Hotel lifts modified.
  3. Stair ST-02 mirrored.
  4. Store room north of Stair ST-02 modified.
  5. 2 x Additional Hotel rooms provided in lieu of Access. Hotel room.
  6. Exterior facade between grid E-G (East carpark) modified to suit 2 x additional Hotel rooms.
  7. Condenser zone (East carpark) at grid H modified to allow maintenance access for planter box.
  8. Motorbike parks between grids K-L (East carpark) shifted.
  9. 6 x Parking spaces between grids 13-15 moved east.
  10. Riser at grid 15 (South carpark) deleted.
  11. Hotel room at SW corner redesigned.
  12. Facade fin corner detail modified.
  13. Common Area Stair between grids W-X widened.
  14. Entry from carpark (Upper) into Hotel lobby modified. Stair and ramp deleted.
  15. Parking space typology rearranged.
  16. Eastern facade extents between grids F-K modified.
  17. Condenser zone (East carpark) between grids J-K modified.
  18. Column moved/modified.
  19. Fixed glazing system to corridor end in lieu of louvred system.



Revision	Date	Description	Initial	Checked
1	04/03/19	ISSUED FOR DA MODIFICATION	BS	DOMA

**42 Honeysuckle Drive, Newcastle**  
General Arrangement Plan Level 03

Status	SKETCH		
Scale	1 : 150	@	A1
Drawn	BS	Checked	DOMA
Project No.	s12109		
Plot Date	29/03/2019 5:25:55 PM		
Plot File	42HONEYSUCKLEDRIE_ARCH		
Drawing no.	SK.03.104	Revision	1

**Melbourne** 1 Nicholson Street  
Melbourne VIC 3000 Australia  
T 03 8664 6200 F 03 8664 6300  
email mel@batesmart.com.au  
http://www.batesmart.com.au

**Sydney** 43 Brisbane Street  
Surry Hills NSW 2010 Australia  
T 02 8354 5100 F 02 8354 5199  
email syd@batesmart.com.au  
http://www.batesmart.com.au

Bates Smart Pty Ltd ABN 70 004 999 400

**NOT FOR CONSTRUCTION**

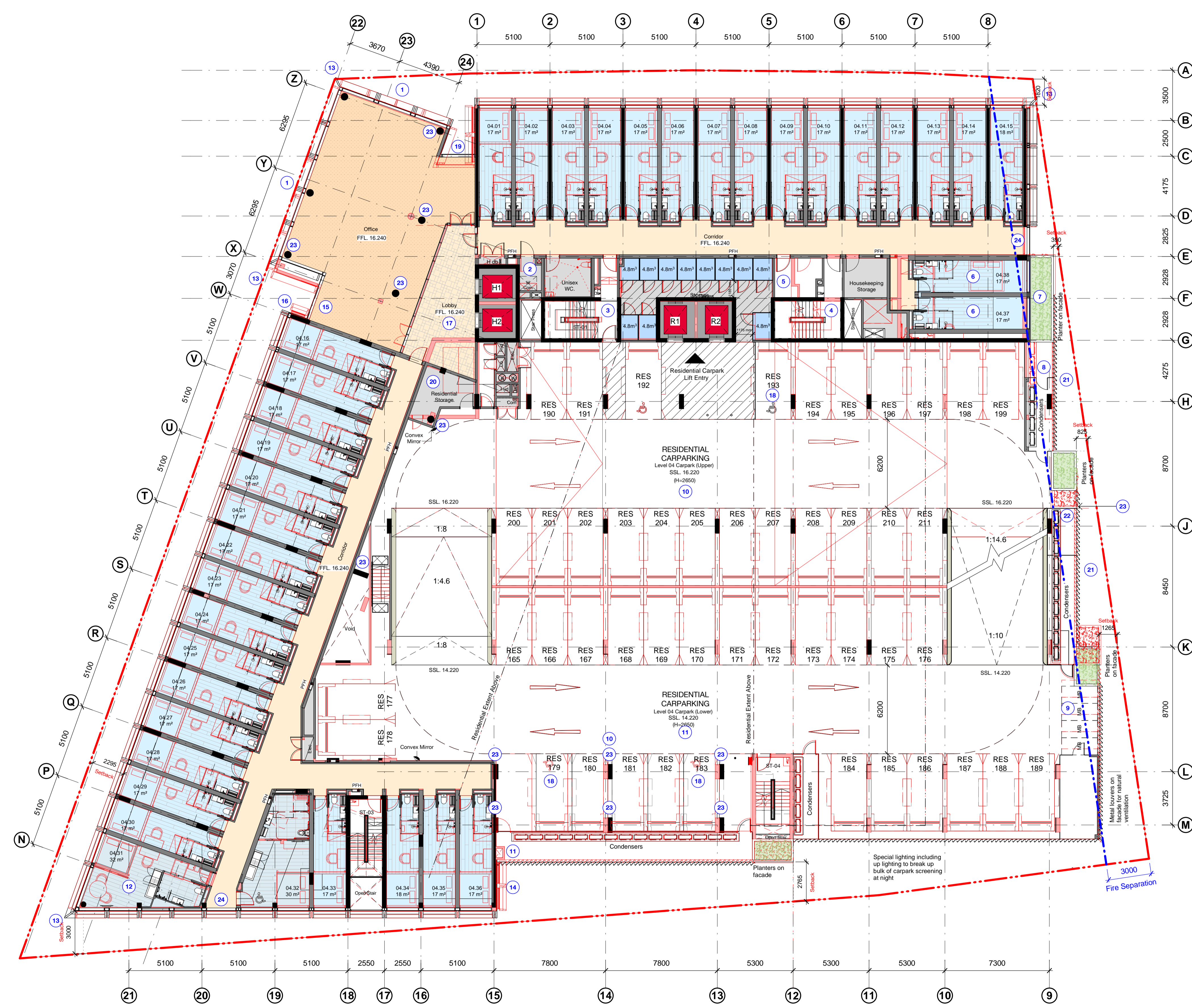


Check all dimensions and site conditions prior to commencement of any work, the purchase or ordering of any materials, fittings, plant, services or equipment and the preparation of shop drawings and or the fabrication of any components.

Do not scale drawings - refer to figured dimensions only. Any discrepancies shall immediately be referred to the architect for clarification.

All drawings may not be reproduced or distributed without prior permission from the architect.

Schedule of Changes	
Level 04	
1.	Facade articulation modified to NW/NE Common Area
2.	Service room behind Hotel lifts modified.
3.	Stair ST-01 egress path modified.
4.	Stair ST-02 mirrored.
5.	Store room north of Stair ST-02 modified.
6.	2 x Additional Hotel rooms provided in lieu of Access. Hotel room.
7.	Exterior facade between grid E-G (East carpark) modified to suit 2 x additional Hotel rooms.
8.	Condenser zone (East carpark) at grid H modified to allow maintenance access for planter box.
9.	Motorbike parks between grids K-L (East carpark) shifted.
10.	6 x Parking spaces between grids 13-15 moved east.
11.	Riser at grid 15 (South carpark) deleted.
12.	Hotel room at SW corner redesigned.
13.	Facade fin corner detail modified.
14.	Facade panels deleted along grid 15 (south carpark facade)
15.	Common Area slot between grids W-X widened.
16.	Facade panel deleted at SE corner of Common Area slot.
17.	Hotel lobby design modified.
18.	Parking space typology rearranged.
19.	Facade slot extent and panelisation modified at NW corner between grids 1 and 24.
20.	Room at NW corner of carpark modified.
21.	Eastern facade extends between grids F-K modified.
22.	Condenser zone (East carpark) between grids J-K modified.
23.	Column moved/modified.
24.	Fixed glazing system to corridor end in lieu of louvred system.



Revision	Date	Description	Initial	Checked
1	04/03/19	ISSUED FOR DA MODIFICATION	BS	DOMA

**42 Honeyuckle Drive**  
**42 Honeyuckle Drive,**  
**Newcastle**  
 General Arrangement Plan  
 Level 04

Status	SKETCH		
Scale	1 : 150	@	A1
Drawn	BS	Checked	DOMA
Project No.	s12109		
Plot Date	29/03/2019 5:26:04 PM		
Plot File	42HONEYUCKLEDRIE_ARCH		
Drawing no.	SK.03.105	Revision	1

Melbourne 1 Nicholson Street  
 Melbourne VIC 3000 Australia  
 T 03 8664 6200 F 03 8664 6300  
 email mel@batesmart.com.au  
 http://www.batesmart.com.au

Sydney 43 Brisbane Street  
 Surry Hills NSW 2010 Australia  
 T 02 8354 5100 F 02 8354 5199  
 email syd@batesmart.com.au  
 http://www.batesmart.com.au

Bates Smart Pty Ltd ABN 70 004 999 400

NOT FOR CONSTRUCTION

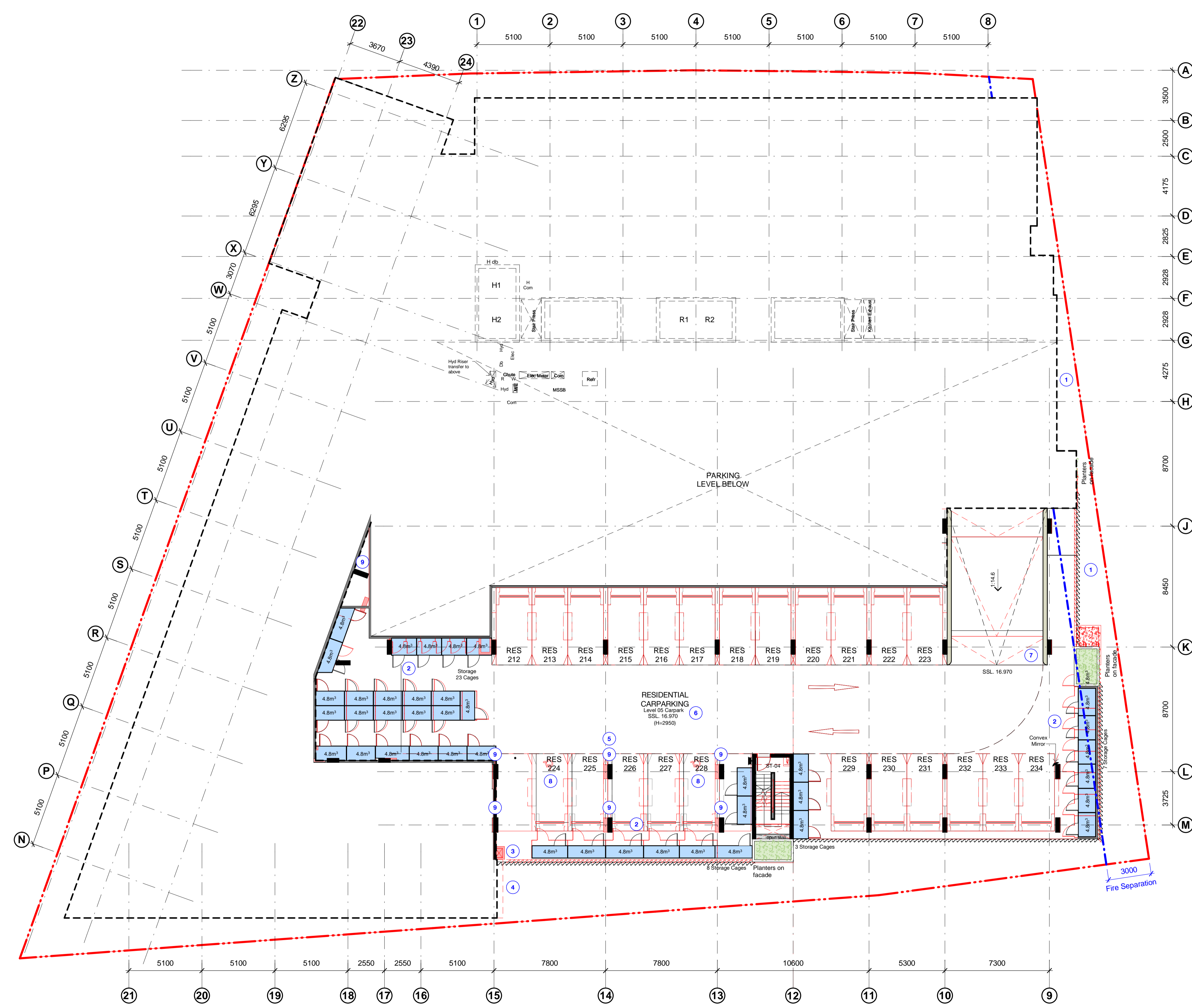
**BATESSMART**

Check all dimensions and site conditions prior to commencement of any work, the purchase or ordering of any materials, fittings, plant, services or equipment and the preparation of shop drawings and/or the fabrication of any components.

Do not scale drawings - refer to figured dimensions only. Any discrepancies shall immediately be referred to the architect for clarification.

All drawings may not be reproduced or distributed without prior permission from the architect.

Schedule of Changes	
Level 05 Parking	
1.	Eastern facade extents between grids F-K modified.
2.	Storage units rearranged/moved.
3.	Riser at grid 15 (South carpark) deleted.
4.	Facade extent along grid 15 (south carpark facade) updated.
5.	5 x Parking spaces between grids 13-15 moved east.
6.	Level 05 Carpark SSL lowered.
7.	Carpark ramp extent modified.
8.	Parking space typology rearranged.
9.	Column moved/modified.



Revision	Date	Description	Initial	Checked
1	04/03/19	ISSUED FOR DA MODIFICATION	BS	DOMA

NOT FOR CONSTRUCTION

**42 Honeysuckle Drive,  
Newcastle**  
General Arrangement Plan  
Level 05 Parking

Status	SKETCH
Scale	1 : 150 @ A1
Drawn	BS Checked DOMA
Project No.	s12109
Plot Date	29/03/2019 5:26:12 PM
Plot File	42HONEYSUCKLEDRIVE_ARCH
Drawing no.	SK.03.106
Revision	1

**Melbourne** 1 Nicholson Street  
Melbourne VIC 3000 Australia  
T 03 8664 6200 F 03 8664 6300  
email mel@batesmart.com.au  
http://www.batesmart.com.au

**Sydney** 43 Brisbane Street  
Surry Hills NSW 2010 Australia  
T 02 8354 5100 F 02 8354 5199  
email syd@batesmart.com.au  
http://www.batesmart.com.au

Bates Smart Pty Ltd ABN 70 004 999 400

