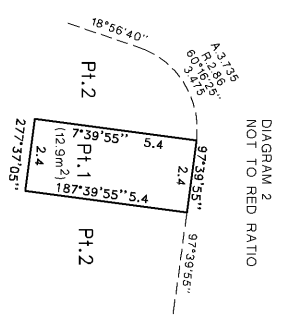
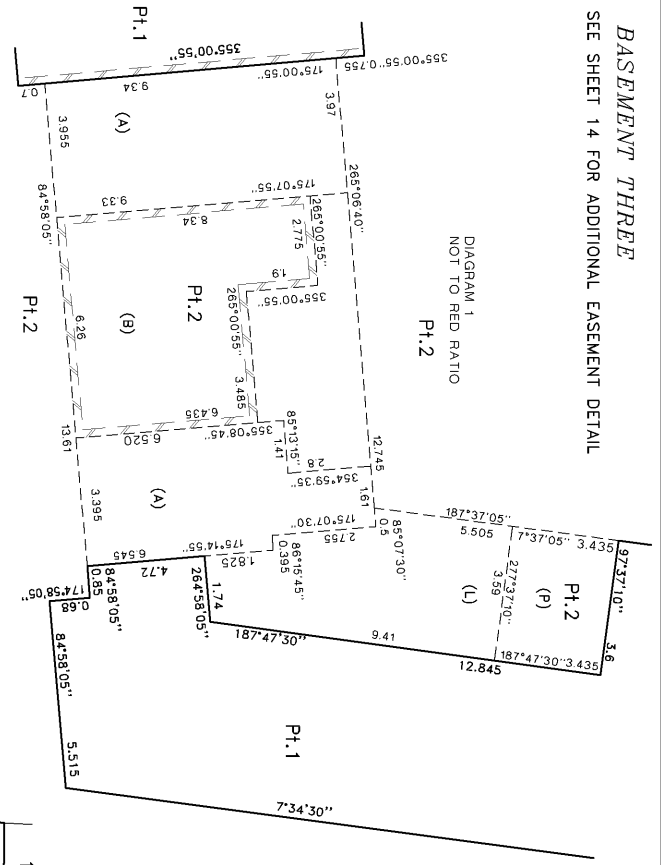
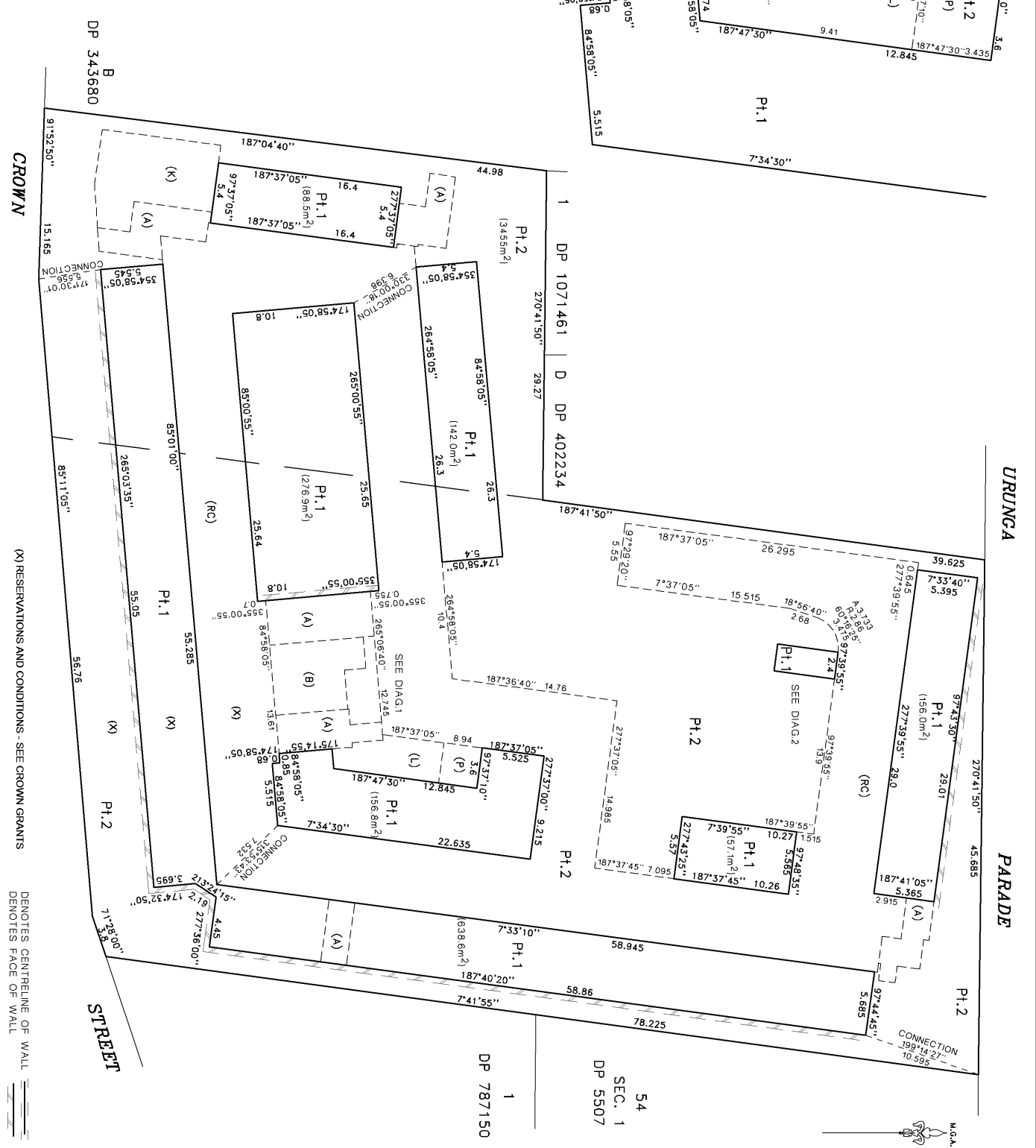


BASEMENT THREE
SEE SHEET 14 FOR ADDITIONAL EASEMENT DETAIL



- NOTES:
1. THESE PARTS OF LOT 1 & 2 ARE UNLIMITED IN DEPTH AND LIMITED IN HEIGHT TO THE LOWER LIMIT OF THE LOTS SHOWN ON THE FLOOR ABOVE
 2. THE WHOLE OF LOTS 1 & 2 ARE SUBJECT TO AN EASEMENT FOR SUPPORT AND SHELTER EASEMENT FOR SERVICES AND EASEMENT FOR EMERGENCY EGRESS
 3. (A) DENOTES EASEMENT FOR ACCESS VARIABLE WIDTH (LIMITED IN STRATUM).
 4. (B) DENOTES EASEMENT FOR USE OF LEFTS VARIABLE WIDTH (LIMITED IN STRATUM).
 5. (K) DENOTES EASEMENT FOR USE OF MAINTENANCE FACILITIES VARIABLE WIDTH (LIMITED IN STRATUM).
 6. (R) DENOTES RIGHT OF CARRIAGEWAY VARIABLE WIDTH (LIMITED IN STRATUM).
 7. (P) DENOTES EASEMENT FOR USE OF STORAGE ROOM VARIABLE WIDTH (LIMITED IN STRATUM).
 8. (L) DENOTES EASEMENT FOR CLEANERS STORE VARIABLE WIDTH (LIMITED IN STRATUM).
 9. UNLESS OTHERWISE NOTED, EASEMENTS ARE LIMITED IN STRATUM TO THE STRATUM LIMITS OF THE BURDENED LOTS ON THE RESPECTIVE SHEET.



CROWN

(X) RESERVATIONS AND CONDITIONS - SEE CROWN GRANTS

DENOTES CENTRELINE OF WALL
DENOTES FACE OF WALL

Surveyor : ANDREW P. MASON	PLAN OF SUBDIVISION OF LOT 1 DP 1191024	LGA: WOLLONGONG	Registered: 21.7.2016
Date of Survey : 15.10.2015	SURVEYOR'S REFERENCE: 32947DP2	Locality: WOLLONGONG	
		Subdivision No: 2015/124	
		Lengths are in metres. Reduction Ratio 1:250	
			DP1212956

32	10	20	30	40	50	Table of mm	80	100	110	120	130	140
----	----	----	----	----	----	-------------	----	-----	-----	-----	-----	-----



BASEMENT ONE

URUNGA

PARADE



NOTES:
 1. THIS PART OF LOT 2 SHOWN HEREON IS LIMITED IN DEPTH TO A LOWER LIMIT OF THE LOTS SHOWN ON THE FLOOR ABOVE THIS PART OF LOT 1 IS LIMITED IN DEPTH AND HEIGHT BETWEEN HORIZONTAL PLANES AT RL 38.35 AND RL 43.75
 2. THE WHOLE OF LOTS 1 & 2 ARE SUBJECT TO AN EASEMENT FOR SUPPORT AND SHELTER EASEMENT FOR SERVICES AND EASEMENT FOR EMERGENCY EGRESS.
 3. (A) DENOTES EASEMENT FOR ACCESS VARIABLE WIDTH LIMITED IN STRATUM.
 4. (B) DENOTES EASEMENT FOR USE OF LIFTS VARIABLE WIDTH LIMITED IN STRATUM.
 5. (C) DENOTES EASEMENT FOR USE OF BICYCLE STORE VARIABLE WIDTH LIMITED IN STRATUM.
 6. (D) DENOTES EASEMENT FOR USE OF FACILITIES VARIABLE WIDTH LIMITED IN STRATUM.
 7. (J) DENOTES EASEMENT FOR COMMUNICATIONS AND SERVICES VARIABLE WIDTH LIMITED IN STRATUM.
 8. (O) DENOTES EASEMENT FOR USE OF GENERATOR ROOM VARIABLE WIDTH LIMITED IN STRATUM.
 9. (RC) DENOTES RIGHT OF CARRIAGEWAY VARIABLE WIDTH LIMITED IN STRATUM.
 10. (S) DENOTES EASEMENT FOR AMBULANCE PARKING 8.15 WIDE AND VARIABLE WIDTH LIMITED IN STRATUM.
 11. (P) DENOTES EASEMENT FOR USE OF STORAGE ROOM VARIABLE WIDTH LIMITED IN STRATUM.
 12. UNLESS OTHERWISE NOTED, EASEMENTS ARE LIMITED IN STRATUM TO THE STRATUM LIMITS OF THE BURDENED LOTS ON THE RESPECTIVE SHEET.

1. THIS PART OF LOT 2 SHOWN HEREON IS LIMITED IN DEPTH TO A LOWER LIMIT OF THE LOTS SHOWN ON THE FLOOR ABOVE THIS PART OF LOT 1 IS LIMITED IN DEPTH AND HEIGHT BETWEEN HORIZONTAL PLANES AT RL 38.35 AND RL 43.75

2. THE WHOLE OF LOTS 1 & 2 ARE SUBJECT TO AN EASEMENT FOR SUPPORT AND SHELTER EASEMENT FOR SERVICES AND EASEMENT FOR EMERGENCY EGRESS.
 3. (A) DENOTES EASEMENT FOR ACCESS VARIABLE WIDTH LIMITED IN STRATUM.
 4. (B) DENOTES EASEMENT FOR USE OF LIFTS VARIABLE WIDTH LIMITED IN STRATUM.
 5. (C) DENOTES EASEMENT FOR USE OF BICYCLE STORE VARIABLE WIDTH LIMITED IN STRATUM.
 6. (D) DENOTES EASEMENT FOR USE OF FACILITIES VARIABLE WIDTH LIMITED IN STRATUM.
 7. (J) DENOTES EASEMENT FOR COMMUNICATIONS AND SERVICES VARIABLE WIDTH LIMITED IN STRATUM.
 8. (O) DENOTES EASEMENT FOR USE OF GENERATOR ROOM VARIABLE WIDTH LIMITED IN STRATUM.
 9. (RC) DENOTES RIGHT OF CARRIAGEWAY VARIABLE WIDTH LIMITED IN STRATUM.
 10. (S) DENOTES EASEMENT FOR AMBULANCE PARKING 8.15 WIDE AND VARIABLE WIDTH LIMITED IN STRATUM.
 11. (P) DENOTES EASEMENT FOR USE OF STORAGE ROOM VARIABLE WIDTH LIMITED IN STRATUM.
 12. UNLESS OTHERWISE NOTED, EASEMENTS ARE LIMITED IN STRATUM TO THE STRATUM LIMITS OF THE BURDENED LOTS ON THE RESPECTIVE SHEET.

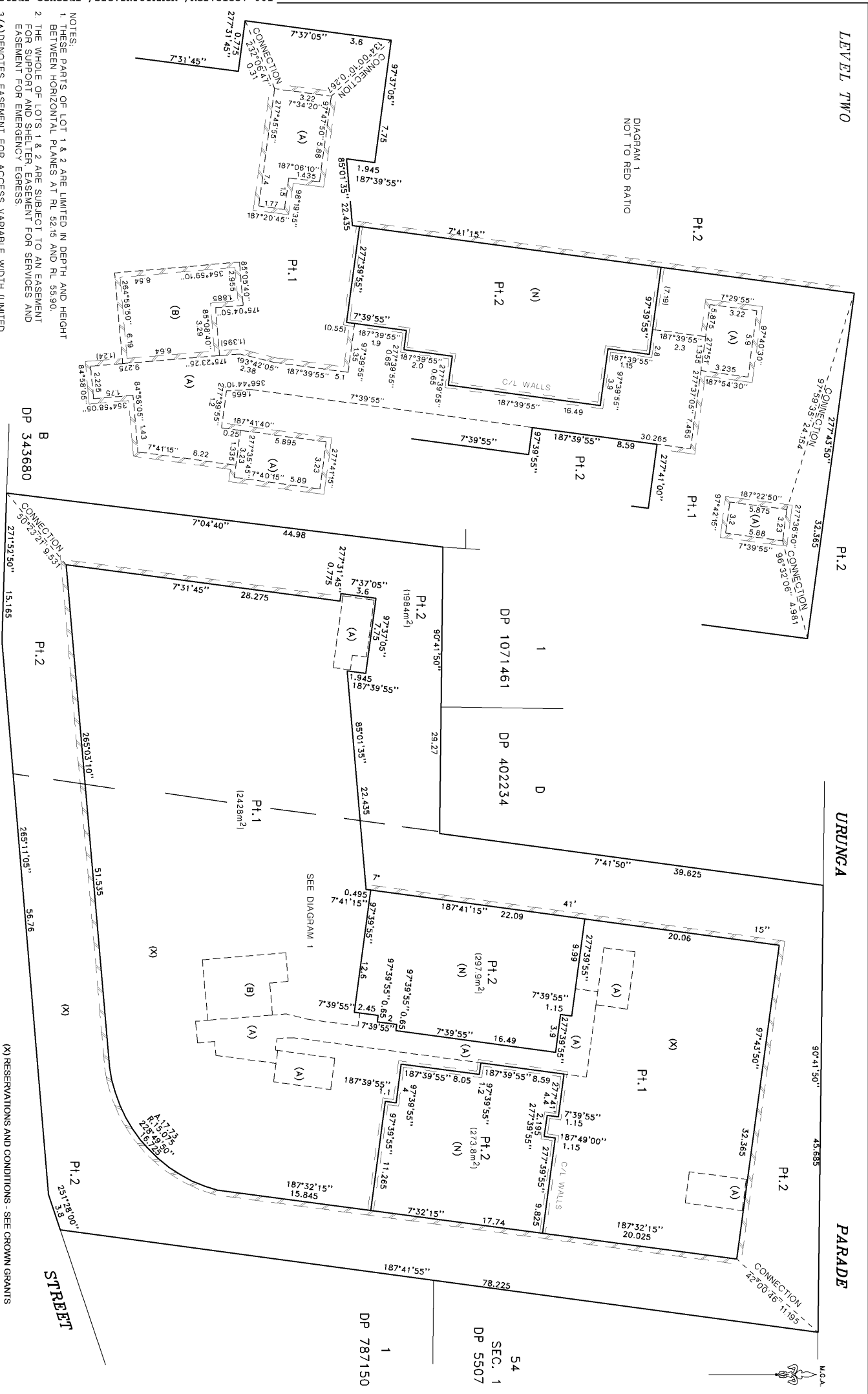
DATE OF SURVEY : 15.10.2015
 SURVEYOR'S REFERENCE : 32847DP2

PLAN OF SUBDIVISION OF LOT 1 DP 1191024
 WOLLONGONG
 WOLLONGONG
 Subdivision No: 2016/124
 Lengths are in metres. Reduction Ratio 1:250

Registered:
 21.7.2016

DP1212956

DP1212956



NOTES:

1. THESE PARTS OF LOT 1 & 2 ARE LIMITED IN DEPTH AND HEIGHT BETWEEN HORIZONTAL PLANES AT RL 82.15 AND RL 55.90.
2. THE WHOLE OF LOTS 1 & 2 ARE SUBJECT TO AN EASEMENT FOR SUPPORT AND SHELTER EASEMENT FOR SERVICES AND EASEMENT FOR EMERGENCY EGRESS.
- 3(A) DENOTES EASEMENT FOR ACCESS VARIABLE WIDTH (LIMITED IN STRATUM).
- 3(B) DENOTES EASEMENT FOR USE OF LIFTS VARIABLE WIDTH (LIMITED IN STRATUM).
- 5(N) DENOTES EASEMENT FOR PLANT AND EQUIPMENT VARIABLE WIDTH (LIMITED IN STRATUM).
6. UNLESS OTHERWISE NOTED, EASEMENTS ARE LIMITED IN STRATUM TO THE STRATUM LIMITS OF THE BURDENED LOTS ON THE RESPECTIVE SHEET.

DP 343680

CONNECTION 1
CONNECTION 2
CONNECTION 3
CONNECTION 4
CONNECTION 5
CONNECTION 6
CONNECTION 7
CONNECTION 8
CONNECTION 9
CONNECTION 10
CONNECTION 11
CONNECTION 12
CONNECTION 13
CONNECTION 14
CONNECTION 15
CONNECTION 16
CONNECTION 17
CONNECTION 18
CONNECTION 19
CONNECTION 20
CONNECTION 21
CONNECTION 22
CONNECTION 23
CONNECTION 24
CONNECTION 25
CONNECTION 26
CONNECTION 27
CONNECTION 28
CONNECTION 29
CONNECTION 30
CONNECTION 31
CONNECTION 32
CONNECTION 33
CONNECTION 34
CONNECTION 35
CONNECTION 36
CONNECTION 37
CONNECTION 38
CONNECTION 39
CONNECTION 40
CONNECTION 41
CONNECTION 42
CONNECTION 43
CONNECTION 44
CONNECTION 45
CONNECTION 46
CONNECTION 47
CONNECTION 48
CONNECTION 49
CONNECTION 50
CONNECTION 51
CONNECTION 52
CONNECTION 53
CONNECTION 54
CONNECTION 55
CONNECTION 56
CONNECTION 57
CONNECTION 58
CONNECTION 59
CONNECTION 60
CONNECTION 61
CONNECTION 62
CONNECTION 63
CONNECTION 64
CONNECTION 65
CONNECTION 66
CONNECTION 67
CONNECTION 68
CONNECTION 69
CONNECTION 70
CONNECTION 71
CONNECTION 72
CONNECTION 73
CONNECTION 74
CONNECTION 75
CONNECTION 76
CONNECTION 77
CONNECTION 78
CONNECTION 79
CONNECTION 80
CONNECTION 81
CONNECTION 82
CONNECTION 83
CONNECTION 84
CONNECTION 85
CONNECTION 86
CONNECTION 87
CONNECTION 88
CONNECTION 89
CONNECTION 90
CONNECTION 91
CONNECTION 92
CONNECTION 93
CONNECTION 94
CONNECTION 95
CONNECTION 96
CONNECTION 97
CONNECTION 98
CONNECTION 99
CONNECTION 100

DP 1071461

DP 402234

DP 787150

SEC. 1
DP 5507

DATE OF SURVEY : 15.10.2015

SURVEYOR'S REFERENCE : 32847092

PLAN OF SUBDIVISION OF LOT 1 DP 1191024

WOLLONGONG

WOLLONGONG

21.7.2016

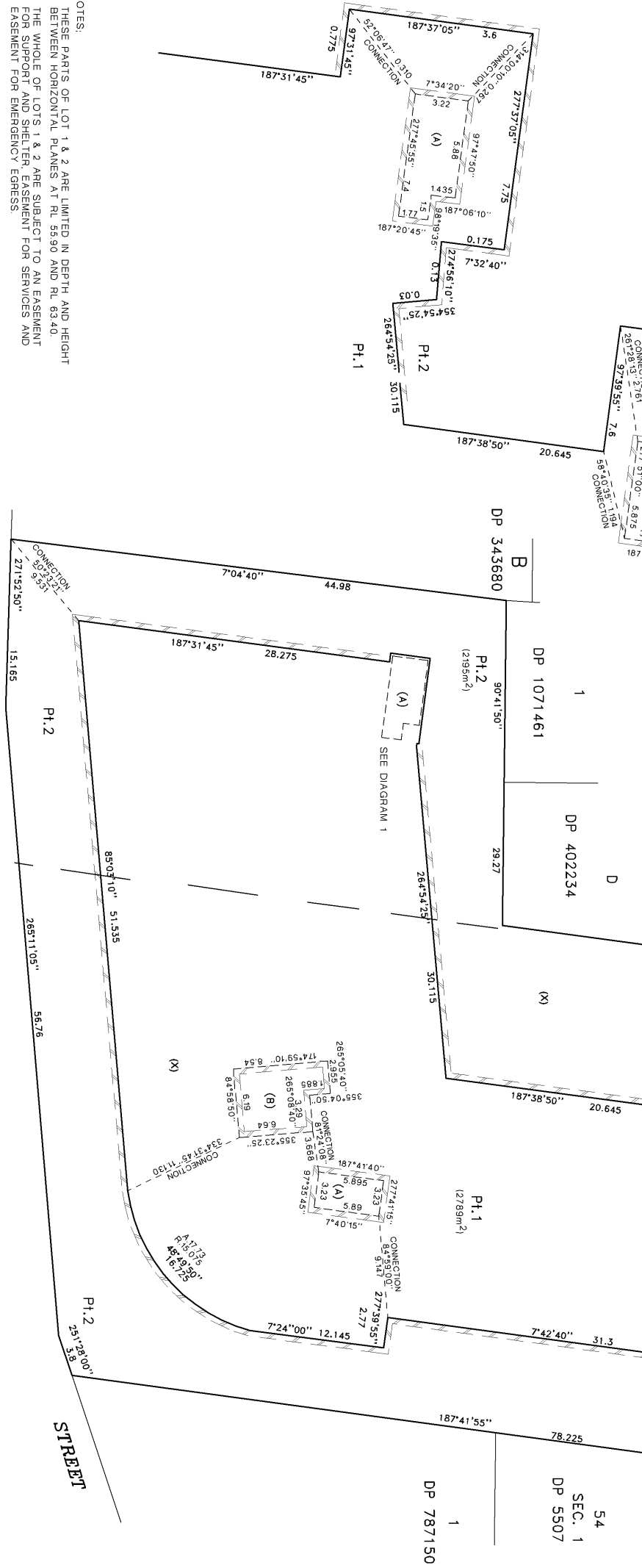
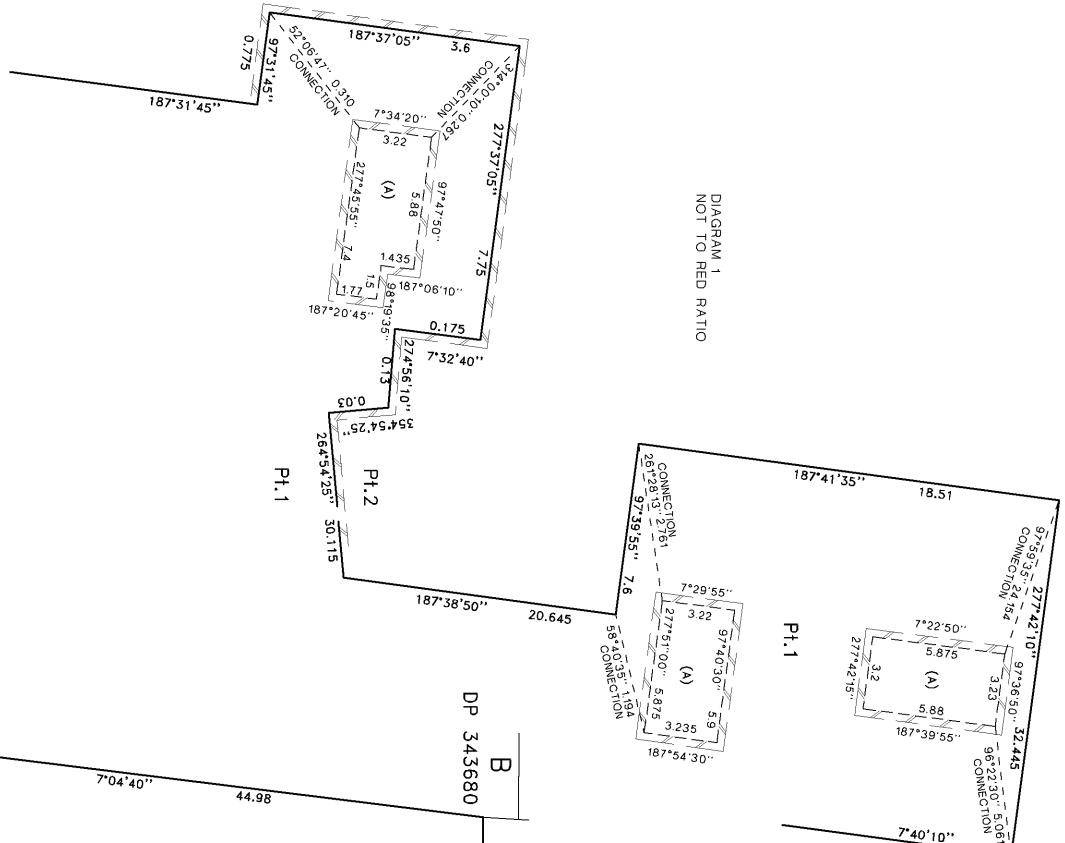
DP1212956

LEVEL THREE & FOUR

URUNGA

PARADE

DIAGRAM 1
NOT TO RED RATIO



CROWN STREET

(X) RESERVATIONS AND CONDITIONS - SEE CROWN GRANTS

NOTES:

- 1. THESE PARTS OF LOT 1 & 2 ARE LIMITED IN DEPTH AND HEIGHT BETWEEN HORIZONTAL PLANES AT RL 55.90 AND RL 63.40.
- 2. THE WHOLE OF LOTS 1 & 2 ARE SUBJECT TO AN EASEMENT FOR SUPPORT AND SHELTER EASEMENT FOR SERVICES AND EASEMENT FOR EMERGENCY EGRESS.
- 3. (A) DENOTES EASEMENT FOR ACCESS VARIABLE WIDTH (LIMITED IN STRATUM).
- 4. (B) DENOTES EASEMENT FOR USE OF LIFTS VARIABLE WIDTH (LIMITED IN STRATUM).
- 5. UNLESS OTHERWISE NOTED, EASEMENTS ARE LIMITED IN STRATUM TO THE STRATUM LIMITS OF THE BURDENED LOTS ON THE RESPECTIVE SHEET.

38 10 20 30 40 50 60 70 80 90 100 110 120 130 140

Table of mm

DENOTES FACE OF WALL

Surveyor : ANDREW P. MASON
Date of Survey : 15.10.2015
SURVEYOR'S REFERENCE: 32847DP2

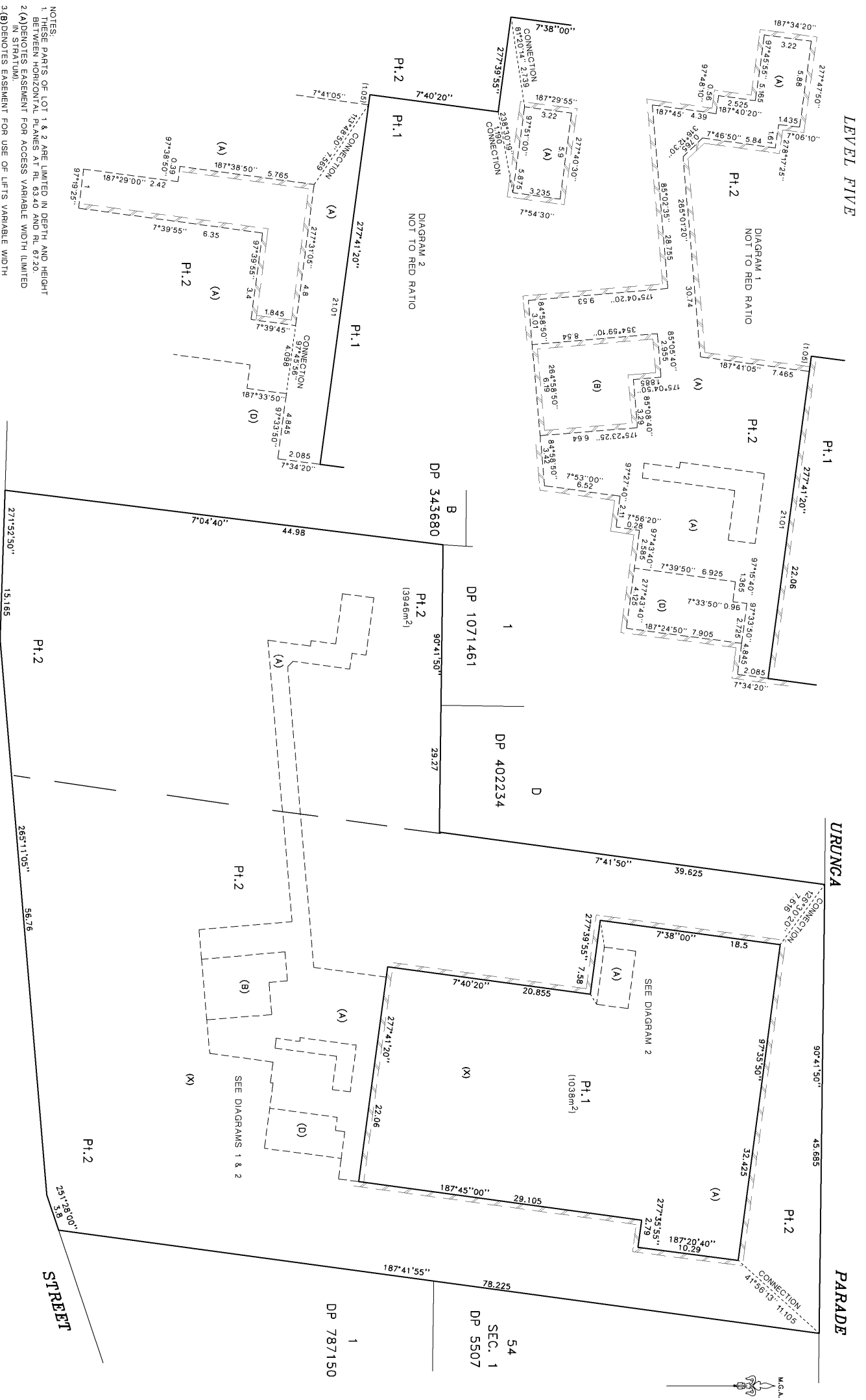
PLAN OF SUBDIVISION OF LOT 1 DP 1191024

LGA: WOLLONGONG
Locality: WOLLONGONG
Subdivision No: 2015/124
Lengths are in metres. Reduction Ratio 1:250

Registered: 21.7.2016

DP1212956





LEVEL FIVE

URUNGA

PARADE

CROWN

(X) RESERVATIONS AND CONDITIONS - SEE CROWN GRANTS

NOTES: 1. THESE PARTS OF LOT 1 & 2 ARE LIMITED IN DEPTH AND HEIGHT BETWEEN HORIZONTAL PLANES AT RL 63.40 AND RL 67.20 2. (A) DENOTES EASEMENT FOR ACCESS VARIABLE WIDTH (LIMITED IN STRATUM). 3. (B) DENOTES EASEMENT FOR USE OF LIFTS VARIABLE WIDTH (LIMITED IN STRATUM). 4. (D) DENOTES EASEMENT FOR USE OF FACILITIES VARIABLE WIDTH (LIMITED IN STRATUM). 5. THE WHOLE OF LOTS 1 & 2 ARE SUBJECT TO AN EASEMENT FOR SUPPORT AND SHELTER, EASEMENT FOR SERVICES AND EASEMENT FOR EMERGENCY EGRESS. 6. UNLESS OTHERWISE NOTED, EASEMENTS ARE LIMITED IN STRATUM TO THE STRATUM LIMITS OF THE BURDENED LOTS ON THE RESPECTIVE SHEET.	SURVEYOR : ANDREW P. MASON DATE OF SURVEY : 15.10.2015 SUPERVISOR'S REFERENCE : 32847DP2	PLAN OF SUBDIVISION OF LOT 1 DP 1191024	LGA: WOLLONGONG LOCALITY: WOLLONGONG SUBDIVISION NO: 2015/124 LENGTHS ARE IN METRES. REDUCTION RATIO 1:250	REGISTRARS: 21.7.2016	DP1212956
--	--	---	---	-----------------------	-----------

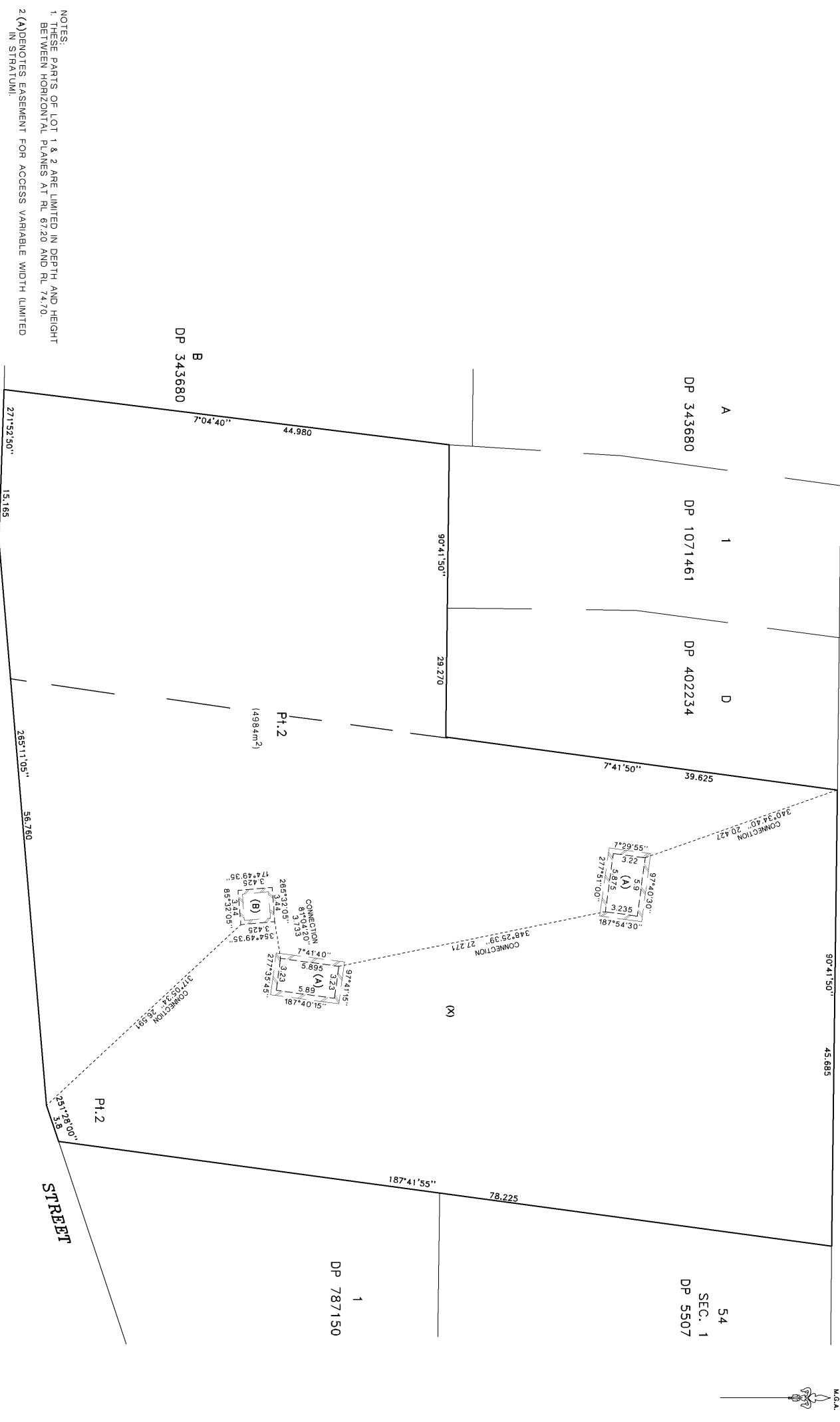
39	10	20	30	40	50	60	70	80	90	100	110	120	130	140
----	----	----	----	----	----	----	----	----	----	-----	-----	-----	-----	-----

LEVEL SIX & SEVEN

URUNGA

PARADE

M.S.A.



NOTES:
 1. THESE PARTS OF LOT 1 & 2 ARE LIMITED IN DEPTH AND HEIGHT BETWEEN HORIZONTAL PLANES AT RL 67.20 AND RL 74.70.
 2 (A) DENOTES EASEMENT FOR ACCESS VARIABLE WIDTH LIMITED IN STRATUMI.
 3(B) DENOTES EASEMENT FOR USE OF LIFTS VARIABLE WIDTH LIMITED IN STRATUMI.
 4. THE WHOLE OF LOTS 1 & 2 ARE SUBJECT TO AN EASEMENT FOR SUPPORT AND SHELTER, EASEMENT FOR SERVICES AND EASEMENT FOR EMERGENCY EGRESS.
 5. UNLESS OTHERWISE NOTED, EASEMENTS ARE LIMITED IN STRATUMI TO THE STRATUMI LIMITS OF THE BURDENED LOTS ON THE RESPECTIVE SHEET.
 DENOTES FACE OF WALL

CROWN

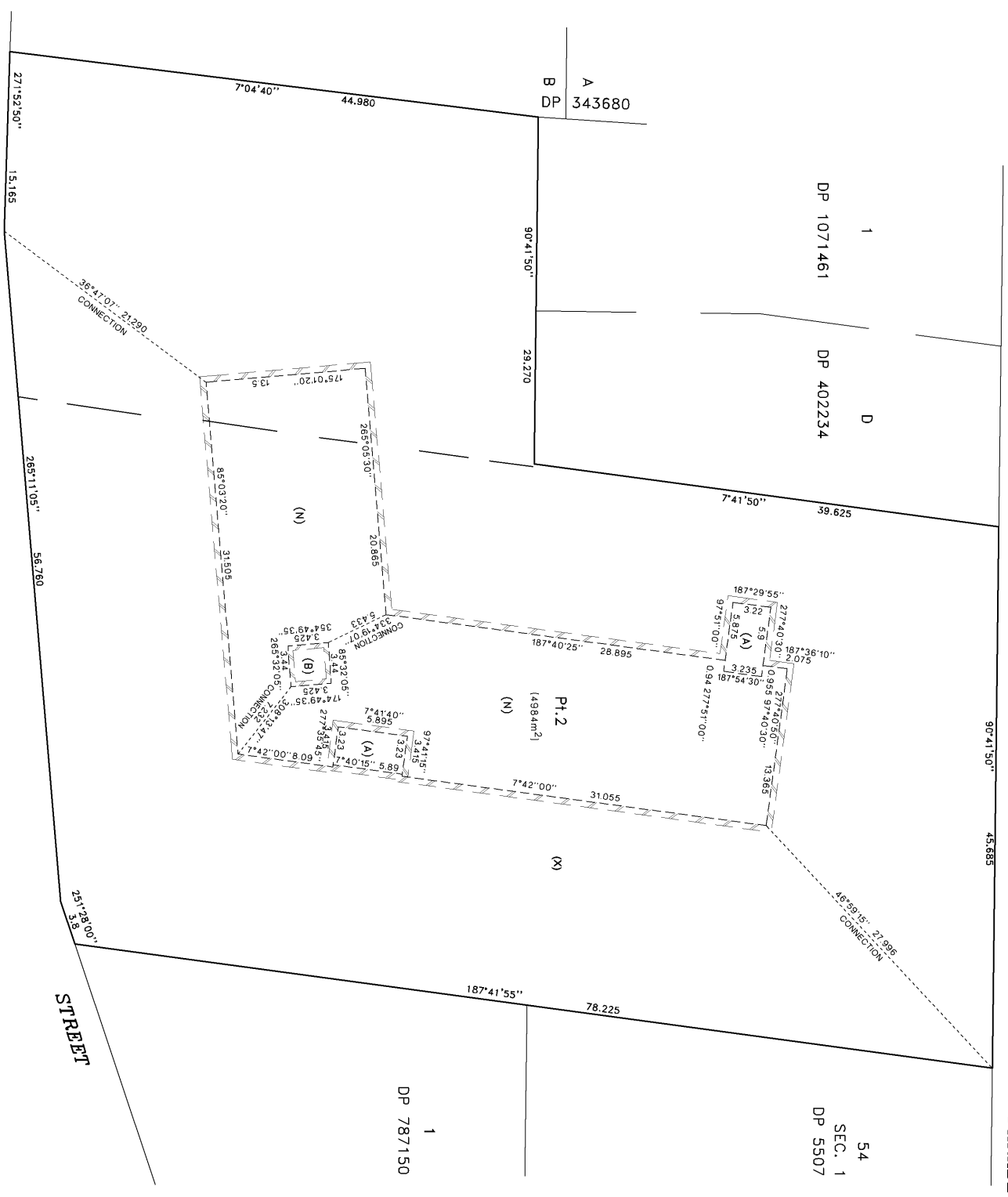
(X) RESERVATIONS AND CONDITIONS - SEE CROWN GRANTS

Surveyor : ANDREW P. MASON	PLAN OF SUBDIVISION OF LOT 1 DP 1191024	LGA : WOLLONGONG	Registered : 21.7.2016	DP1212956
Date of Survey : 15.10.2015		Locality : WOLLONGONG		
SURVEYOR'S REFERENCE : 328470E2		Subdivision No : 2015/124		
		Lengths are in metres, Reduction Ratio 1:250		

LEVEL EIGHTH & ABOVE

URUNGA

PARADE



NOTES:
 1. THIS PART OF LOT 2 IS UNLIMITED IN HEIGHT AND LIMITED IN DEPTH TO RL 74.70
 2. (A) DENOTES EASEMENT FOR ACCESS VARIABLE WIDTH LIMITED IN STRATUM LIMITED BETWEEN RL 74.70 AND RL 77.70 AT THIS LEVEL.
 3. (B) DENOTES EASEMENT FOR USE OF LIFTS 3.428 WIDE LIMITED IN STRATUM LIMITED BETWEEN RL 74.70 AND RL 77.70 AT THIS LEVEL.
 4. (N) DENOTES EASEMENT FOR PLANT AND EQUIPMENT VARIABLE WIDTH LIMITED IN STRATUM LIMITED BETWEEN RL 74.70 AND RL 80.00 AT THIS LEVEL.

CROWN

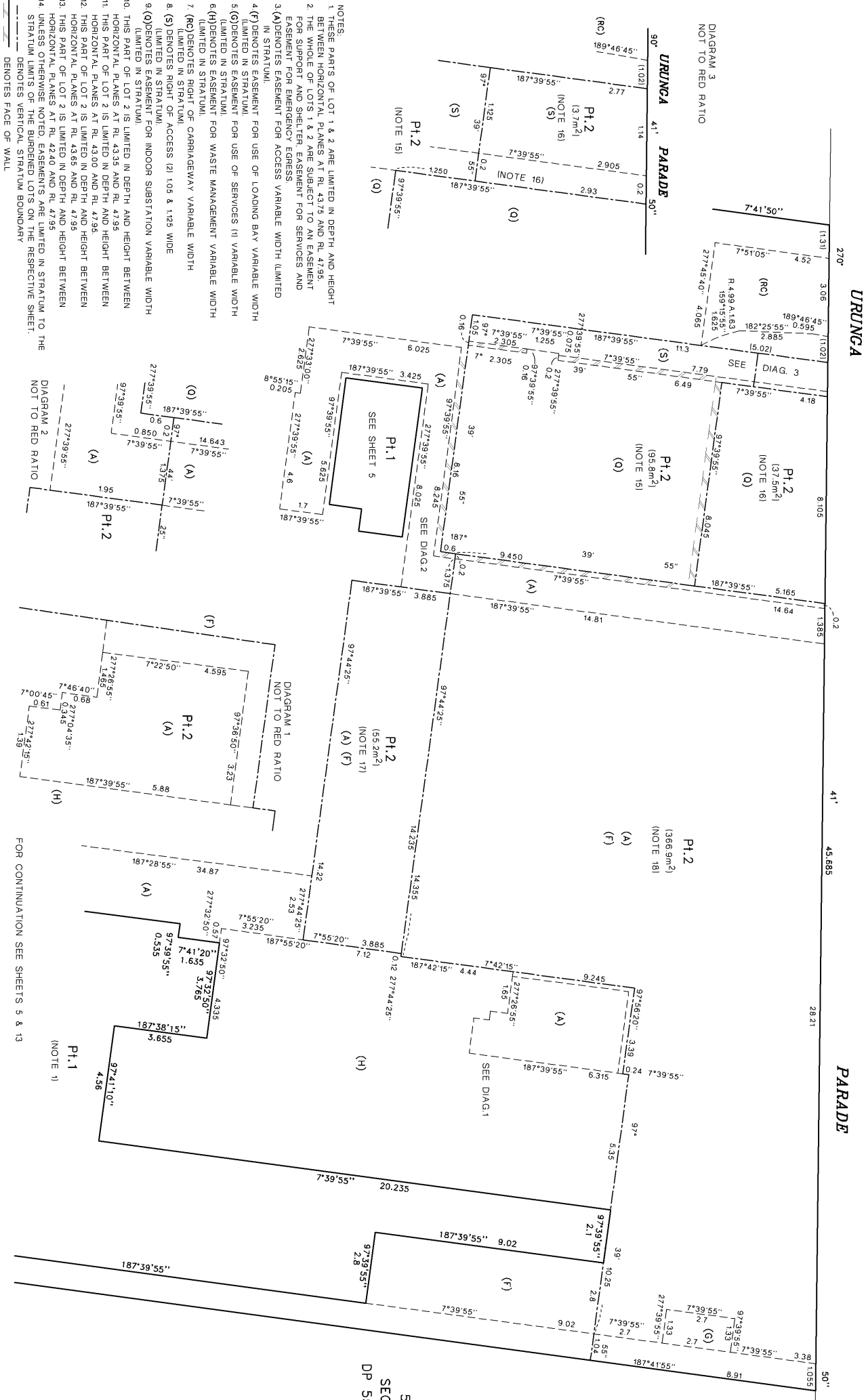
(X) RESERVATIONS AND CONDITIONS - SEE CROWN GRANTS

Surveyor : ANDREW P. MASON Date of Survey : 15.10.2015 SURVEYOR'S REFERENCE: 32847DP2	PLAN OF SUBDIVISION OF LOT 1 DP 1191024	LGA: WOLLONGONG Locality: WOLLONGONG Subdivision No: 2015/724 Lengths are in metres. Reduction Ratio 1:250	Registered: 21.7.2016	DP1212956
---	---	---	-----------------------	-----------

41	10	20	30	40	50	Table of mm	90	100	110	120	130	140
----	----	----	----	----	----	-------------	----	-----	-----	-----	-----	-----



GROUND FLOOR
ADDITIONAL EASEMENT DETAIL



- NOTES:
1. THESE PARTS OF LOT 1 & 2 ARE LIMITED IN DEPTH AND HEIGHT BETWEEN HORIZONTAL PLANES AT RL 43.75 AND RL 47.95.
 2. THE WHOLE OF LOTS 1 & 2 ARE SUBJECT TO AN EASEMENT FOR SUPPORT AND SHELTER EASEMENT FOR SERVICES AND EASEMENT FOR EMERGENCY EGRESS.
 3. (A) DENOTES EASEMENT FOR ACCESS VARIABLE WIDTH (LIMITED IN STRATUM).
 4. (F) DENOTES EASEMENT FOR USE OF LOADING BAY VARIABLE WIDTH (LIMITED IN STRATUM).
 5. (G) DENOTES EASEMENT FOR USE OF SERVICES (I) VARIABLE WIDTH (LIMITED IN STRATUM).
 6. (H) DENOTES EASEMENT FOR WASTE MANAGEMENT VARIABLE WIDTH (LIMITED IN STRATUM).
 7. (RC) DENOTES RIGHT OF CARRIAGEWAY VARIABLE WIDTH (LIMITED IN STRATUM).
 8. (S) DENOTES RIGHT OF STRATUM.
 9. (Q) DENOTES EASEMENT FOR INDOOR SUBSTATION VARIABLE WIDTH (LIMITED IN STRATUM).
 10. THIS PART OF LOT 2 IS LIMITED IN DEPTH AND HEIGHT BETWEEN HORIZONTAL PLANES AT RL 43.35 AND RL 47.95.
 11. THIS PART OF LOT 2 IS LIMITED IN DEPTH AND HEIGHT BETWEEN HORIZONTAL PLANES AT RL 43.00 AND RL 47.95.
 12. THIS PART OF LOT 2 IS LIMITED IN DEPTH AND HEIGHT BETWEEN HORIZONTAL PLANES AT RL 43.65 AND RL 47.95.
 13. THIS PART OF LOT 2 IS LIMITED IN DEPTH AND HEIGHT BETWEEN HORIZONTAL PLANES AT RL 42.40 AND RL 47.95.
 14. UNLESS OTHERWISE NOTED, EASEMENTS ARE LIMITED IN STRATUM TO THE STRATUM LIMITS OF THE BURDENED LOTS ON THE RESPECTIVE SHEET.
 15. THIS PART OF LOT 2 IS LIMITED IN DEPTH AND HEIGHT BETWEEN HORIZONTAL PLANES AT RL 43.25 AND RL 47.95.
 16. THIS PART OF LOT 2 IS LIMITED IN DEPTH AND HEIGHT BETWEEN HORIZONTAL PLANES AT RL 43.00 AND RL 47.95.
 17. THIS PART OF LOT 2 IS LIMITED IN DEPTH AND HEIGHT BETWEEN HORIZONTAL PLANES AT RL 43.65 AND RL 47.95.
 18. THIS PART OF LOT 2 IS LIMITED IN DEPTH AND HEIGHT BETWEEN HORIZONTAL PLANES AT RL 42.40 AND RL 47.95.

DIAGRAM 1
NOT TO RED RATIO

DIAGRAM 2
NOT TO RED RATIO

DIAGRAM 3
NOT TO RED RATIO

FOR CONTINUATION SEE SHEETS 5 & 13

Surveyor: ANDREW P. MASON
Date of Survey: 15.10.2015
SURVEYOR'S REFERENCE: 32847DP2

PLAN OF SUBDIVISION OF LOT 1 DP 1191024

LGA: WOLLONGONG
Locality: WOLLONGONG
Subdivision No: 2015/124
Lengths are in metres Reduction Ratio 1:100

Registered: 21.7.2016

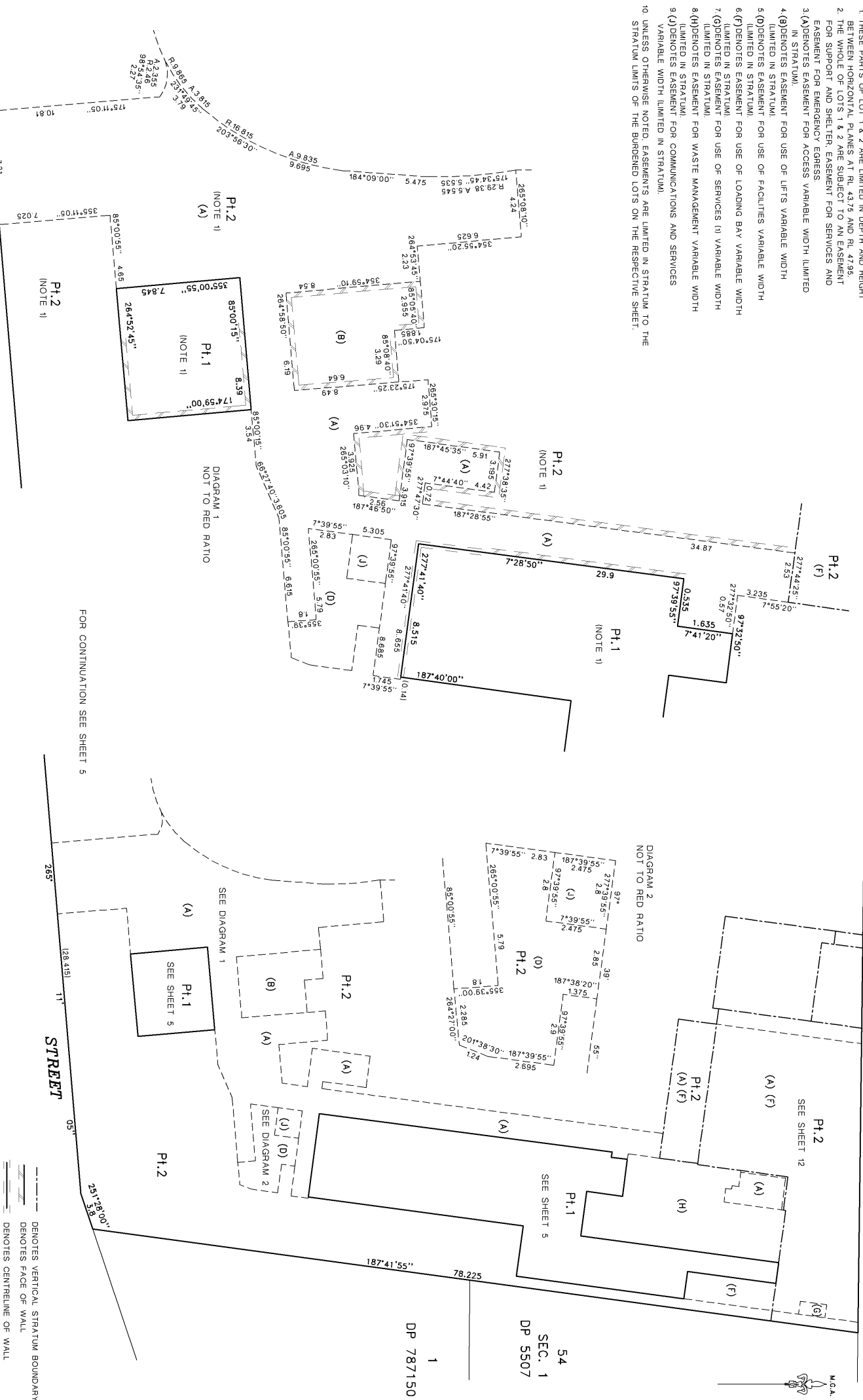
DP1212956

54
SEC. 1
DP 5507



GROUND FLOOR ADDITIONAL EASEMENT DETAIL

- NOTES:
1. THESE PARTS OF LOT 1 & 2 ARE LIMITED IN DEPTH AND HEIGHT BETWEEN HORIZONTAL PLANES AT RL 43.75 AND RL 47.96.
 2. THE WHOLE OF LOTS 1 & 2 ARE SUBJECT TO AN EASEMENT FOR SUPPORT AND SHELTER, EASEMENT FOR SERVICES AND EASEMENT FOR EMERGENCY EGRESS.
 3. (A) DENOTES EASEMENT FOR ACCESS VARIABLE WIDTH (LIMITED IN STRATUM).
 4. (B) DENOTES EASEMENT FOR USE OF LIFTS VARIABLE WIDTH (LIMITED IN STRATUM).
 5. (D) DENOTES EASEMENT FOR USE OF FACILITIES VARIABLE WIDTH (LIMITED IN STRATUM).
 6. (F) DENOTES EASEMENT FOR USE OF LOADING BAY VARIABLE WIDTH (LIMITED IN STRATUM).
 7. (G) DENOTES EASEMENT FOR USE OF SERVICES (I) VARIABLE WIDTH (LIMITED IN STRATUM).
 8. (H) DENOTES EASEMENT FOR WASTE MANAGEMENT VARIABLE WIDTH (LIMITED IN STRATUM).
 9. (J) DENOTES EASEMENT FOR COMMUNICATIONS AND SERVICES VARIABLE WIDTH (LIMITED IN STRATUM).
 10. UNLESS OTHERWISE NOTED, EASEMENTS ARE LIMITED IN STRATUM TO THE STRATUM LIMITS OF THE BURDENED LOTS ON THE RESPECTIVE SHEET.



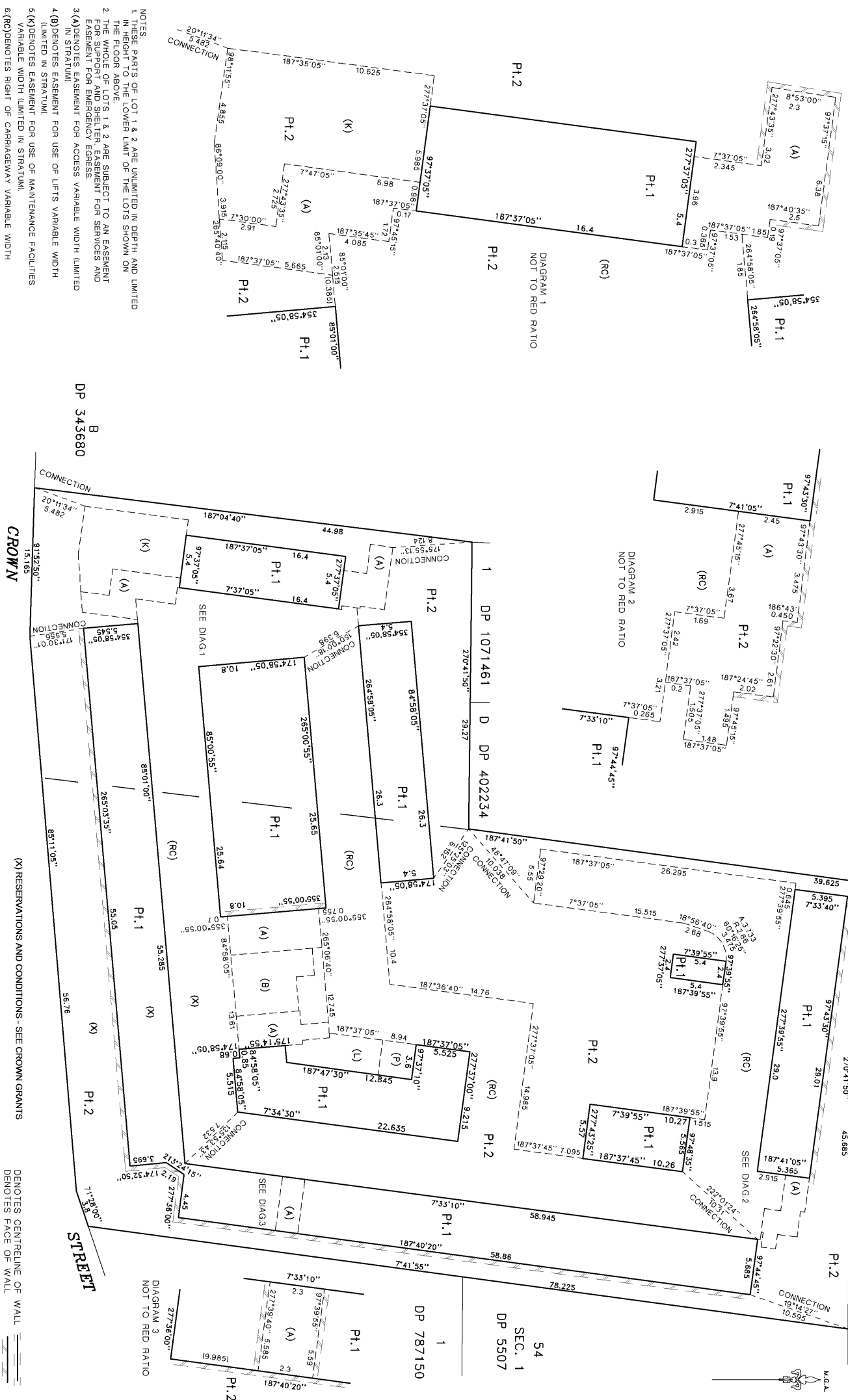
<p>Surveyor : ANDREW P. MASON</p> <p>Date of Survey : 15.10.2015</p> <p>SURVEYOR'S REFERENCE: 32847DP2</p>	<p>PLAN OF SUBDIVISION OF LOT 1 DP 1191024</p>	<p>LGA: WOLLONGONG</p> <p>Locality: WOLLONGONG</p> <p>Subdivision No: 2015/724</p> <p>Lengths are in metres. Reduction Ratio 1:250</p>	<p>Registered: 21.7.2016</p>	<p>DP1212956</p>
--	--	--	------------------------------	------------------

--- DENOTES VERTICAL STRATUM BOUNDARY
 - - - DENOTES FACE OF WALL
 = = = DENOTES CENTRELINE OF WALL

**BASEMENT THREE (LOWEST LEVEL)
ADDITIONAL EASEMENT DETAIL**

URUNGA

PARADE




44	10	20	30	40	50	Table of mm	80	100	110	120	130	140		
<p>NOTES:</p> <p>1 THESE PARTS OF LOT 1 & 2 ARE UNLIMITED IN DEPTH AND LIMITED IN HEIGHT TO THE LOWER LIMIT OF THE LOTS SHOWN ON THE FLOOR ABOVE.</p> <p>2 THE WHOLE OF LOTS 1 & 2 ARE SUBJECT TO AN EASEMENT FOR SUPPORT AND SHELTER EASEMENT FOR SERVICES AND EASEMENT FOR EMERGENCY EGRESS.</p> <p>3 (A) DENOTES EASEMENT FOR ACCESS VARIABLE WIDTH (LIMITED IN STRATUM).</p> <p>4 (B) DENOTES EASEMENT FOR USE OF LEFTS VARIABLE WIDTH (LIMITED IN STRATUM).</p> <p>5 (K) DENOTES EASEMENT FOR USE OF MAINTENANCE FACILITIES VARIABLE WIDTH (LIMITED IN STRATUM).</p> <p>6 (RC) DENOTES RIGHT OF CARRIAGEWAY VARIABLE WIDTH (LIMITED IN STRATUM).</p> <p>7 (P) DENOTES EASEMENT FOR USE OF STORAGE ROOM VARIABLE WIDTH (LIMITED IN STRATUM).</p> <p>8 (L) DENOTES EASEMENT FOR CLEANERS STORE VARIABLE WIDTH (LIMITED IN STRATUM).</p> <p>9 UNLESS OTHERWISE NOTED EASEMENTS ARE LIMITED IN STRATUM TO THE STRATUM LIMITS OF THE BURDENED LOTS ON THE RESPECTIVE SHEET.</p>														
<p>DP 343680</p> <p>B</p> <p>CROWN</p> <p>(X) RESERVATIONS AND CONDITIONS - SEE CROWN GRANTS</p> <p>DENOTES CENTRELINE OF WALL</p> <p>DENOTES FACE OF WALL</p>														
<p>Surveyor: ANDREW P. MASON</p> <p>Date of Survey: 15.10.2015</p> <p>SURVEYOR'S REFERENCE: 32847DP2</p>			<p>PLAN OF SUBDIVISION OF LOT 1 DP 1191024</p>			<p>LGA: WOLLONGONG</p> <p>Locality: WOLLONGONG</p> <p>Subdivision No: 2015/724</p> <p>Lengths are in metres. Reduction Ratio 1:250</p>			<p>Registered: 21.7.2016</p>			<p>DP1212956</p>		

PLAN FORM 6 (2012)

WARNING: Creasing or folding will lead to rejection

DEPOSITED PLAN ADMINISTRATION SHEET

Sheet 1 of 3 sheet(s)


Registered:  21.7.2016 Title System: TORRENS Purpose: SUBDIVISION	Office Use Only Office Use Only <h1 style="text-align: center;">DP1212956</h1>
PLAN OF SUBDIVISION OF LOT 1 DP 1191024	LGA: WOLLONGONG Locality: WOLLONGONG Parish: WOLLONGONG County: CAMDEN
<p style="text-align: center;">Crown Lands NSW/Western Lands Office Approval</p> <p>I, (Authorised Officer) in approving this plan certify that all necessary approvals in regard to the allocation of the land shown herein have been given.</p> Signature: Date: File Number: Office:	<p style="text-align: center;">Survey Certificate</p> I, ANDREW PHILIP MASON of FRANK M MASON & CO PTY LTD, 2 WINSLOW STREET, KIRRIBILLI NSW 2061 a surveyor registered under the <i>Surveying and Spatial Information Act 2002</i> , certify that: *(a) The land shown in the plan was surveyed in accordance with the <i>Surveying and Spatial Information Regulation 2012</i> , is accurate and the survey was completed on 15 OCTOBER 2015 *(b) The part of the land shown in the plan was surveyed in accordance with the <i>Surveying and Spatial Information Regulation 2012</i>, is accurate and the survey was completed on, the part not surveyed was compiled in accordance with that Regulation. *(c) The land shown in this plan was compiled in accordance with the <i>Surveying and Spatial Information Regulation 2012</i>.
<p style="text-align: center;">Subdivision Certificate</p> I, <u>NATHAN MCBRIARMY</u> *Authorised Person/*General Manager/*Accredited Certifier, certify that the provisions of s.109J of the <i>Environmental Planning and Assessment Act 1979</i> have been satisfied in relation to the proposed subdivision, new road or reserve set out herein. Signature: <u>N. McBriarmy</u> Accreditation number: Consent Authority: <u>WOLLONGONG CITY COUNCIL</u> Date of endorsement: <u>14.1.16</u> Subdivision Certificate number: <u>SC 2015/124</u> File number: <u>DA 2014/1431</u> *Strike through if inapplicable.	Signature: <u>Andrew Mason</u> Dated: 25/10/2015 Surveyor ID: 1576 Datum Line: X-Y Type: Urban The terrain is Level-Undulating
Statements of intention to dedicate public roads, public reserves and drainage reserves.	Plans used in the preparation of survey/compilation. DP 1191024 If space is insufficient continue on PLAN FORM 6A
Signatures, Seals and Section 88B Statements should appear on PLAN FORM 6A	Surveyor's Reference: 32847DP2

PLAN FORM 6A (2012)

WARNING: Creasing or folding will lead to rejection

DEPOSITED PLAN ADMINISTRATION SHEET

Sheet 2 of 3 sheet(s)

Registered:  21.7.2016
 Office Use Only

Office Use Only
DP1212956

PLAN OF SUBDIVISION OF LOT 1
DP 1191024

This sheet is for the provision of the following information as required:
 • A schedule of lots and addresses - See 60(c) *SSI Regulation 2012*
 • Statements of intention to create and release affecting interests in accordance with section 88B *Conveyancing Act 1919*
 • Signatures and seals- see 195D *Conveyancing Act 1919*
 • Any information which cannot fit in the appropriate panel of sheet 1 of the administration sheets.

Subdivision Certificate number: SC 2015/124
 Date of Endorsement: 14.1.16

LOT	STREET NUMBER	STREET NAME	STREET TYPE	LOCALITY
1	360-364	CROWN	STREET	WOLLONGONG
2	360-364	CROWN	STREET	WOLLONGONG

PURSUANT TO SECTION 88B OF THE CONVEYANCING ACT, 1919, IT IS INTENDED TO CREATE:

1. EASEMENT FOR SUPPORT AND SHELTER (WHOLE OF LOT)
2. EASEMENT FOR SERVICES (WHOLE OF LOT)
3. EASEMENT FOR EMERGENCY EGRESS (WHOLE OF LOT)
4. RIGHT OF CARRIAGEWAY VARIABLE WIDTH (LIMITED IN STRATUM)
5. EASEMENT FOR ACCESS VARIABLE WIDTH (LIMITED IN STRATUM)
6. EASEMENT FOR USE OF LIFTS VARIABLE WIDTH (LIMITED IN STRATUM)
7. EASEMENT FOR USE OF BICYCLE STORE VARIABLE WIDTH (LIMITED IN STRATUM)
8. EASEMENT FOR USE OF FACILITIES VARIABLE WIDTH (LIMITED IN STRATUM)
9. EASEMENT FOR USE OF LOADING BAY VARIABLE WIDTH (LIMITED IN STRATUM)
10. EASEMENT FOR SERVICES (1) VARIABLE WIDTH (LIMITED IN STRATUM)
11. EASEMENT FOR PLANT AND EQUIPMENT VARIABLE WIDTH (LIMITED IN STRATUM)
12. RESTRICTION ON THE USE OF LAND (COMPLIANCE)
13. RESTRICTION ON THE USE OF LAND (MEDICAL AND DENTAL SERVICES)
14. RESTRICTION ON THE USE OF LAND (PATHOLOGY)
15. RESTRICTION ON THE USE OF LAND (RADIOLOGY)
16. RESTRICTION ON THE USE OF LAND (NUCLEAR MEDICINE)
17. RESTRICTION ON THE USE OF LAND (OTHER)
18. RESTRICTION ON THE USE OF LAND (TREATMENTS)
19. RESTRICTION ON THE USE OF LAND (PRIVATE HEALTH FACILITIES)
20. RIGHT OF ACCESS VARIABLE WIDTH (RA3) (LIMITED IN STRATUM)
21. EASEMENT FOR TRAFFIC LIGHT SERVICES VARIABLE WIDTH (TL1) (LIMITED IN STRATUM)
22. EASEMENT FOR INDOOR SUBSTATION VARIABLE WIDTH (LIMITED IN STRATUM)
23. POSITIVE COVENANT
24. EASEMENT FOR USE OF STORAGE ROOM VARIABLE WIDTH (LIMITED IN STRATUM)
25. EASEMENT FOR CLEANERS STORE VARIABLE WIDTH (LIMITED IN STRATUM)
26. EASEMENT FOR USE OF MAINTENANCE FACILITIES VARIABLE WIDTH (LIMITED IN STRATUM)
27. EASEMENT FOR COMMUNICATIONS AND SERVICES VARIABLE WIDTH (LIMITED IN STRATUM)
28. EASEMENT FOR USE OF GENERATOR ROOM VARIABLE WIDTH (LIMITED IN STRATUM)
29. EASEMENT FOR AMBULANCE PARKING 8.15 WIDE & VARIABLE WIDTH (LIMITED IN STRATUM)
30. EASEMENT FOR WASTE MANAGEMENT VARIABLE WIDTH (LIMITED IN STRATUM)
31. RIGHT OF ACCESS (2) 1.05 & 1.125 WIDE (LIMITED IN STRATUM)

If space is insufficient use additional annexure sheet

Surveyor's Reference:32847DP2

PLAN FORM 6A (2012)

WARNING: Creasing or folding will lead to rejection

DEPOSITED PLAN ADMINISTRATION SHEET

Sheet 3 of 3 sheet(s)

Registered:



21.7.2016

Office Use Only

Office Use Only

DP1212956

PLAN OF SUBDIVISION OF LOT 1
DP 1191024

- This sheet is for the provision of the following information as required:
- A schedule of lots and addresses - See 60(c) *SSI Regulation 2012*
 - Statements of intention to create and release affecting interests in accordance with section 88B *Conveyancing Act 1919*
 - Signatures and seals- see 195D *Conveyancing Act 1919*
 - Any information which cannot fit in the appropriate panel of sheet 1 of the administration sheets.

Subdivision Certificate number: SC 2015/124
Date of Endorsement: 14.1.16

EXECUTED BY AA CROWN HOLDINGS PTY LTD
ACN 122 563 133, PURSUANT TO SEC. 127 OF THE
CORPORATIONS ACT 2001

SOLE DIRECTOR/SECRETARY
ARTHUR STANTON

EXECUTION BY MORTGAGEE:
AUSTRALIA AND NEW ZEALAND BANKING GROUP LIMITED:

ANDREW RALPH

PURSUANT TO POWER OF ATTORNEY

BOOK NUMBER 4376 NUMBER 411

SIGNED IN MY PRESENCE BY ANDREW RALPH

NADINE ASKEN, WITNESS
242 PITT STREET, SYDNEY NSW 2000.
0414 652 150.

If space is insufficient use additional annexure sheet

Surveyor's Reference:32847DP2