
14 December 2022

Energy Assessments / Planning & Assessment
Department of Planning and Environment
4 Parramatta Square, 12 Darcy Street
PARAMATTA NSW 2150

Attention: Nicole Brewer

Dear Ms Brewer

State Significant Development 8392 Modification 2 – Revised Biodiversity Credit Calculations for the cable routes associated with Stage 2b(ii) (SSD-8392-PA-56)

We refer to:

- (a) The development consent associated with development application no. SSD 8392, granted under the *Environmental Planning & Assessment Act 1979* (NSW) on 7 December 2018, and amended upon approval of SSD 8392 MOD 1 via Modification of Development Consent on 22 October 2021 (**Consent**);
- (b) Application for Modification 2 (BESS connection and laydown area) to the Consent dated 29 July 2022 and associated report and responses (**Modification Application**);
- (c) Approval on 31 October 2022 from Director, Energy Assessments, for Modification 2, including consolidated Consent with amended conditions (**SSD-8392-MOD-2 Approval**);
- (d) Our submission of the Revised Biodiversity Credit Calculations ecologist's letter via the Major Projects Portal (**SSD-8392-PA-56**);
- (e) Your request for additional information (for this cover letter) before accepting SSD-8392-PA-56; and
- (f) Our correspondence and discussions with Anthony Ko, Julia Green, Andy Nixey, and yourself.

1. Background to Consent and Modification

- 1.1. As DPE is aware, whilst contained within the single Consent, two key development activities are approved, being the:
 - construction and operation of a solar farm (**Solar Farm**); and
 - construction and operation of a battery energy storage system (**BESS**).
- 1.2. As between the Solar Farm and the BESS, and whilst carried out under the same Consent:
 - construction and operation of each is and will be carried out by different parties;
 - the primary development activities of each are being carried out on separate land parcels; and



- ownership in the assets of each are owned by different parties.

2. Staging of the development

- 2.1. As approved by the Secretary, the BESS is being progressed as a separate second stage of the development on the basis that it is distinct from the construction and operation of the solar farm stage of the development (**Stage 1**).
- 2.2. As approved by the Secretary, the BESS stage of the Development (**Stage 2**) has been further split into Stage 2a and Stage 2b.
- 2.3. As approved by the Planning Secretary, Stage 2b has been further split into Stage 2b(i), 2b(ii) and 2b(iii).

3. Current status of the Project

- 3.1. The Financial Investment has been committed and transactions concluded.
- 3.2. The EPC contract was executed in December 2021, and the construction commenced in June 2022.
- 3.3. Following further staging of the Development and completion of ongoing pre-construction approvals processes, Stage 2b(i) commenced on 31 October 2022.
- 3.4. Stage 2b(ii) can not commence until the satisfactory conclusion and approval of a Biodiversity Management Plan (**BMP**) prepared in accordance with Biodiversity Development Assessment Report (Revision 3.1, dated 20 September 2022) (**Mod 2 BDAR**), the revised credit obligations (as outlined in item 4 below) have been accepted by BCD (as an addendum to the Mod 2 BDAR), and retirement of biodiversity credits associated with Stage 2b(ii) impacts (for the cable routes).

4. Revised biodiversity credits assessment to provide separate calculations of the credits required to offset impacts associated with (1) the cable routes, and (2) laydown areas associated with SSD-8392-MOD-2

- 4.1. On 1 November 2022 Edify was issued a quote from the Biodiversity Conservation Fund (BCF) Charge System for offset costs associated with the proposal to establish cable connections between the Riverina/Darlington Point Battery Energy Storage System (BESS) and the adjacent TransGrid substation, and temporary construction laydown areas within the TransGrid substation land (for work associated with SSD-8392-MOD-2). The Charge Quote showed a total credit payment obligation of \$1,822,234.20. This total credit obligation was based on assumed presence of 11 species credit species, which were not able to be field verified in the Mod 2 BDAR due to 'out of season' timing constraints.
- 4.2. Concurrently with this timing, it was determined the construction laydown areas that are included in SSD-8392-MOD-2 and the total credit obligation associated with that proposed impact may no longer be required for use, with an alternative commercial storage depot to be used instead. After multiple discussions with officers from DPE (and BCD), it was agreed an option to reduce the total credit obligation (and thus quoted payment) would be to provide separate calculations of the credits required to offset impacts associated with (1) the cable routes, and (2) laydown areas associated with SSD-8392-MOD-2.
- 4.3. This was initially completed as a desktop exercise which resulted in an assessment showing a revised payment obligation for the cable routes could be reduced to \$354,066.44. To reduce the total credit and payment obligation further, two field surveys were conducted with the purpose to identify if any of the species credit species (which had now fallen within the seasonal survey timings) could be



eliminated from the credit obligations on the basis that no evidence of presence could be determined (i.e. the species would no longer be assumed present). Following the field surveys (23 Nov and 1 Dec), and elimination of all but one of the species credit species (which was 'out of season'), the revised assessment showed the total credit payment obligations for the cable routes could be reduced to \$40,347.28.

- 4.4. A revised biodiversity credit obligations letter (**SSD-8392 2b(ii) Revised Biodiversity Credit Obligations Letter**) has been prepared by the consulting ecologist detailing the reassessment of the credit obligations associated with SSD-8392-MOD-2, including clear tables and figures outlining the separation of credit liabilities for the two areas (cable routes and laydown areas); and separate BAM calculator cases for the two areas were created for each of the two footprints.

5. **SSD-8392 2b(ii) Revised Biodiversity Credit Obligations Letter**

- 5.1. Edify is confident the Revised Biodiversity Credit Obligations Letter provides clear information which should result in a significant reduction in biodiversity credits for the cable routes requiring retirement. We submit the letter to you for consideration to affect the revised credit obligations to be retired via payment to the Biodiversity Credit Fund.
- 5.2. Edify requests the Revised Biodiversity Credit Obligations Letter be considered to provide adequate information for the Planning Secretary to exercise discretion under Condition 10A of Schedule 3 of the Consent, to allow for works to commence on Stage 2b(ii) and retiring only those biodiversity credits deemed to be associated with the cable routes impacts.
- 5.3. Edify is committed to closing out any further required administrative tasks to ensure the revised credit obligations are appropriately documented in the relevant instruments and retired, with the understanding these tasks may be completed after 2b(ii) has commenced.

6. **Proceeding with confidence**

We can confirm that the updated CEMP, TMP and AES for Stage 2b(ii) have been approved, and Edify is working with BCD and DPE to address the issues raised by BCD to improve the SSD-8392 2b(ii) BMP to the satisfaction of the Planning Secretary.

We are available to discuss any of the above in further detail. Please let us know if you have any queries.

Yours faithfully,

Claire Driessen
Senior Development Manager
Edify Energy Pty Ltd

claire.driessen@edifyenergy.com
M +61 408 084 900

2nd of December, 2022

Claire Driessen

Edify Energy Pty Ltd

P +61 2 8790 4043

E claire.driessen@edifyenergy.com

RE: Darlington Point – Additional Targeted Surveys & Revised BAM-Calculations

Dear Claire,

In relation to the above matter, please find attached a summary of the separate credit outputs for the laydown areas and cable routes at the Darlington Point site. This report details the results of additional targeted surveys carried out on the 23rd November 2022 and the 1st of December, 2022.

Regards,

Dr David Orchard



Ecologist

OzArk Environment & Heritage

PO Box 2069 DUBBO 2830

02 6882 0118

www.ozarkehm.com.au

1. BACKGROUND

Edify Energy Pty Ltd (Edify) was issued a quote from the Biodiversity Conservation Fund (BCF) Charge System for offset costs associated with the proposal to establish a cable connection between the Darlington Point Battery Energy Storage System (BEES) and the adjacent TransGrid substation and temporary construction laydown areas within the TransGrid substation land (for work associated with SSD-8392-MOD-2).

Subsequent to receiving the quote, OzArk Environment and Heritage (OzArk) was asked to provide separate calculations of the credits required to offset impacts associated with (1) the cable routes, and (2) laydown areas associated with construction activities. In the event that the laydown areas may not be required, the credit outputs associated with the cable routes should be considered the sum total of all credits required to be offset.

Separate BAM calculator cases were created for each of the two footprints. The separated sites are shown in **Figure 1**.

OzArk has subsequently been informed that the laydown areas will not be required; consequently, the credit obligation associated with this area should be disregarded. Only the impacts associated with the cable routes will require offsetting.

Finally, OzArk conducted additional targeted flora surveys within the alignment of the cable routes on 23rd of November 2022 and additional targeted fauna surveys on 1st of December 2022 in order to further reduce the offset obligation associated with the proposal. These surveys are detailed in **Section 2** below.

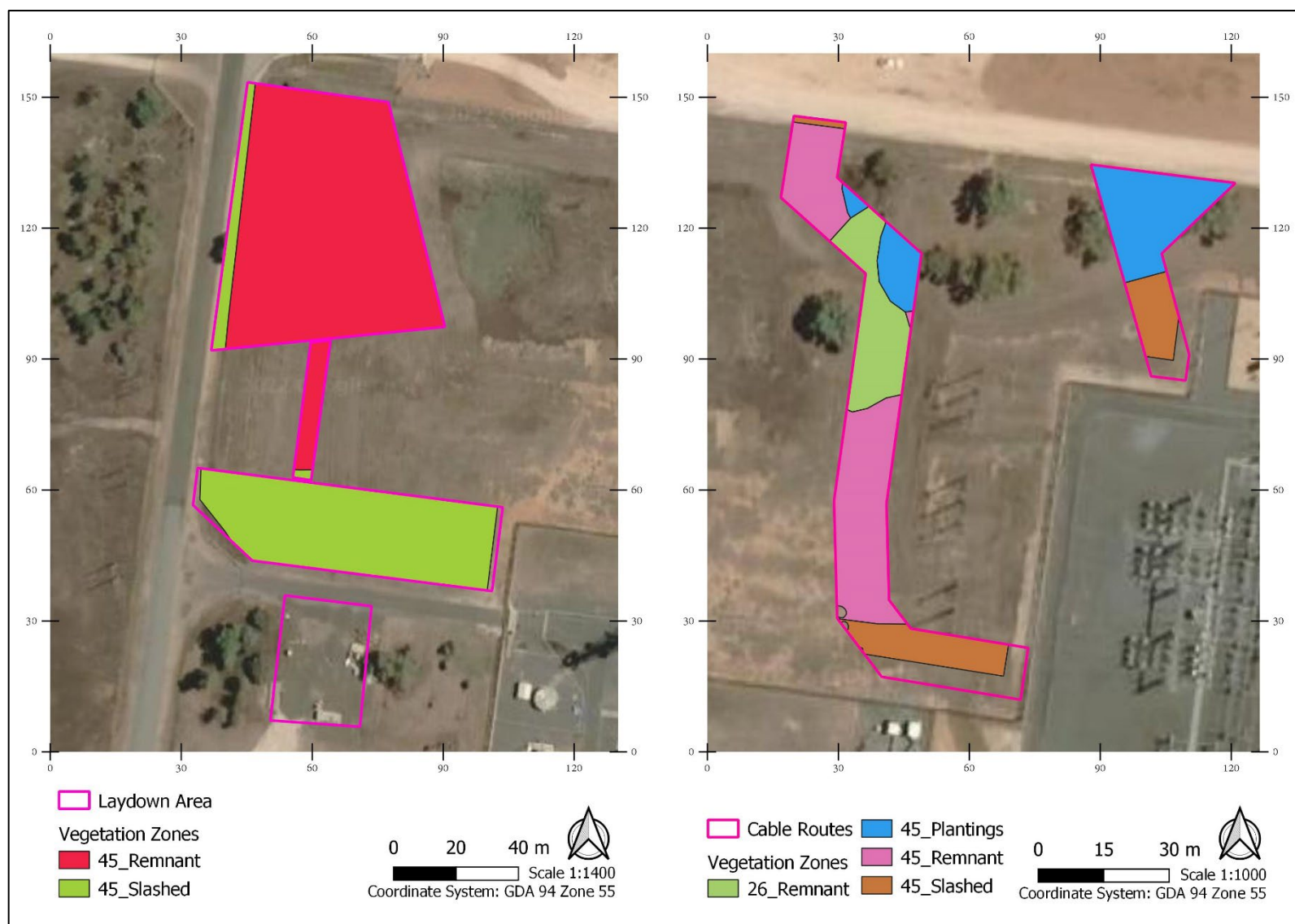


Figure 1. Vegetation zones within the laydown areas (left) and cable routes (right)

2. RESULTS

2.1. Targeted Surveys

In order to further reduce the offset obligation associated with the proposal, targeted surveys for threatened flora were conducted on 23 November 2022 within the proposed alignment of the cable routes. Surveys were undertaken as parallel transects with a spacing of 5-10 m, depending on the density of the observed vegetation. The species targeted by these surveys are identified in **Table 1** below. Flora transects are shown in **Figure 2**. Additional targeted surveys for the Major Mitchell's Cockatoo and the Koala were conducted on 1 December 2022. The method and effort is provided in **Table 1**.

Table 1. Summary of targeted survey methods and effort undertaken.

Date	Personnel	Species Targeted	Method	Effort
23 November 2022	Ian Griffith • Ecologist • Honours – Genetics – La Trobe University • Bachelor of Biological Sciences – La Trobe University • First Aid Training • WH&S Induction Training for Construction Work	• <i>Austrostipa wakoolica</i> / A spear-grass • <i>Brachyscome muelleroides</i> / Claypan Daisy • <i>Brachyscome papillosa</i> / Mossgiel Daisy • <i>Lepidium monoplacoides</i> / Winged Peppergrass • <i>Leptorhynchus orientalis</i> / Lanky Buttons • <i>Pilularia novae-hollandiae</i> / Austral Pillwort • <i>Swainsona sericea</i> / Silky Swainson-pea	• Parallel transects (5-10 m separation) for threatened plants.	• 1.23 km plant transects
1 December 2022	As above	• <i>Lophochroa leadbeateri</i> / Major Mitchell's Cockatoo	• 20-min targeted searches / hectare of suitable habitat • Large hollow watching at dusk	• 60 min • 90 min
1 December 2022	As above	• <i>Phascolarctos cinereus</i> / Koala	• Koala Spot Assessment Technique • Spotlighting	• All trees in subject site and neighbouring trees

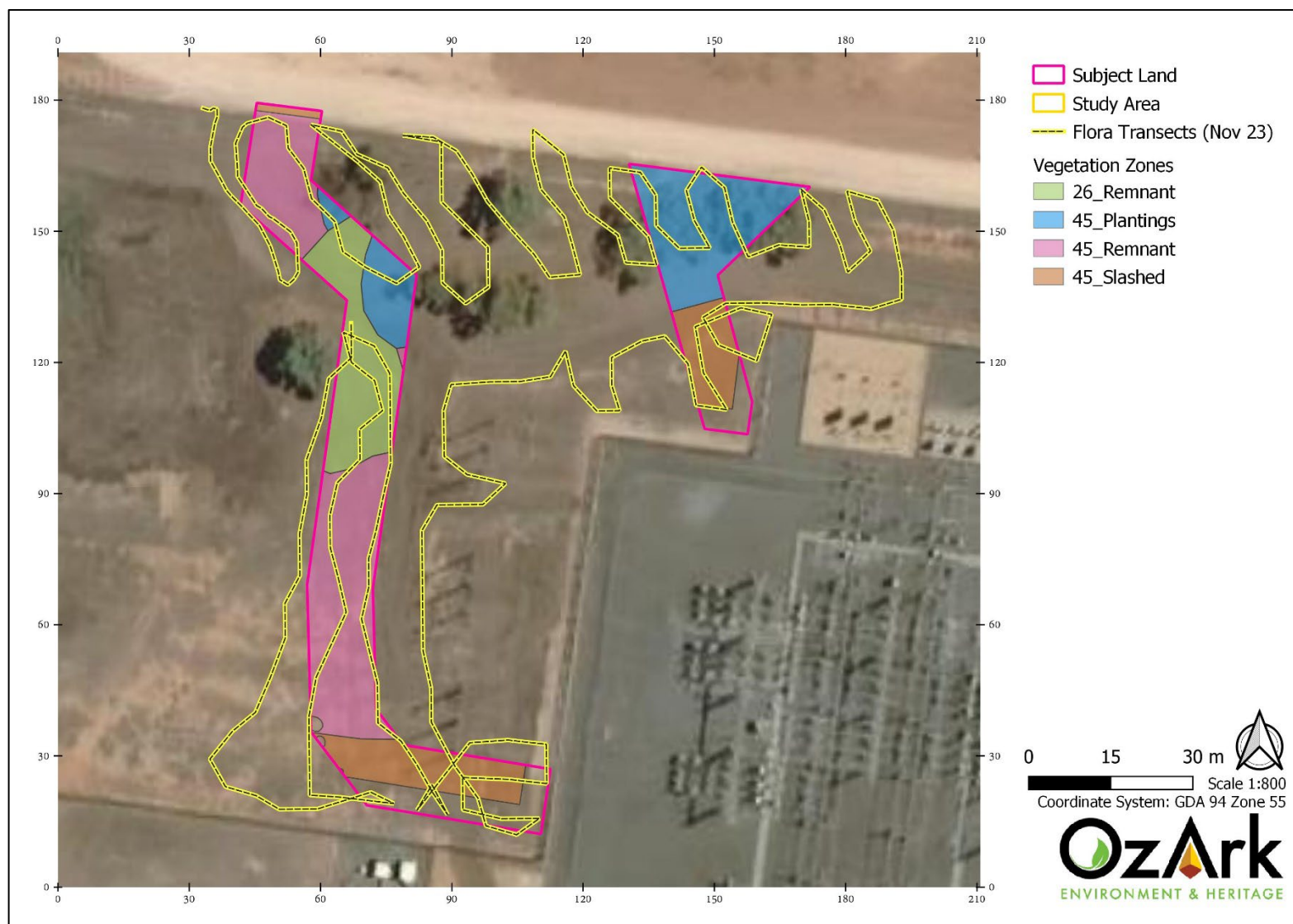


Figure 2. Targeted surveys for threatened flora (November 23rd, 2022)

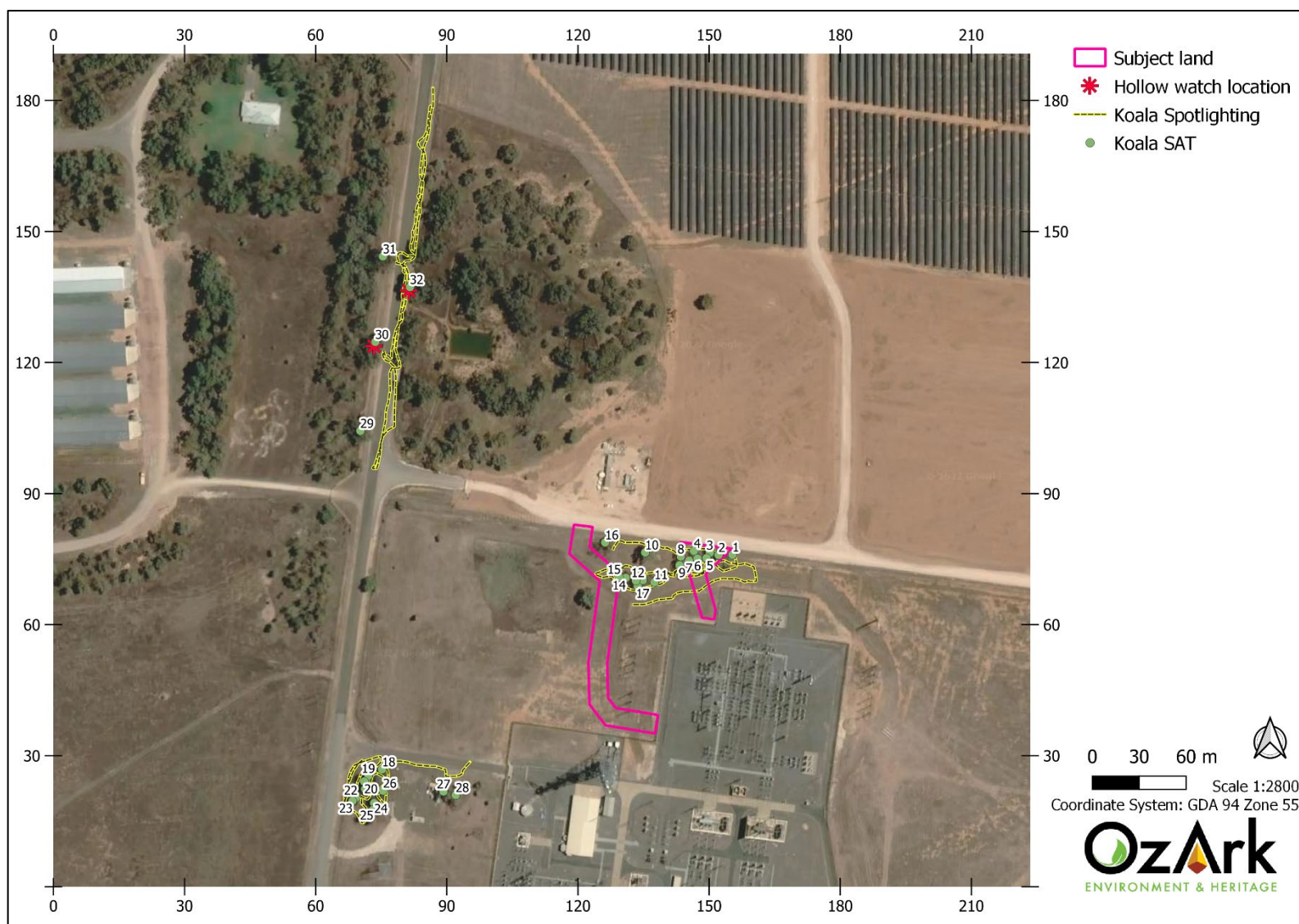


Figure 3. Targeted surveys for threatened fauna (December 1st, 2022)

Table 2. Koala SATs Results

Tree #	Tree Species	Findings
1	<i>Eucalyptus camaldulensis</i>	No koala signs.
2	<i>Eucalyptus camaldulensis</i>	No koala signs.
3	<i>Eucalyptus camaldulensis</i>	No koala signs.
4	<i>Eucalyptus camaldulensis</i>	Several small scratches on trunk. Not definitively koala. No koala scats.
5	<i>Eucalyptus camaldulensis</i>	Several small scratches on trunk. Not definitively koala. No koala scats.
6	<i>Eucalyptus camaldulensis</i>	No koala signs.
7	<i>Eucalyptus camaldulensis</i>	No koala signs.
8	<i>Eucalyptus camaldulensis</i>	No koala signs.
9	<i>Eucalyptus camaldulensis</i>	No koala signs.
10	<i>Eucalyptus camaldulensis</i>	No koala signs.
11	<i>Eucalyptus camaldulensis</i>	No koala signs.
12	<i>Eucalyptus camaldulensis</i>	No koala signs.
13	<i>Eucalyptus camaldulensis</i>	No koala signs.
14	<i>Eucalyptus salubris</i>	No koala signs.
15	<i>Eucalyptus camaldulensis</i>	No koala signs.
16	<i>Eucalyptus salubris</i>	No koala signs.
17	<i>Eucalyptus camaldulensis</i>	No koala signs.
18	<i>Eucalyptus salubris</i>	No koala signs.
19	<i>Eucalyptus melliodora</i>	No koala signs.
20	<i>Eucalyptus melliodora</i>	No koala signs.
21	<i>Eucalyptus</i> sp.	No koala signs.
22	<i>Eucalyptus</i> sp.	No koala signs.
23	<i>Eucalyptus</i> sp.	No koala signs.
24	<i>Eucalyptus salubris</i>	No koala signs.
25	<i>Eucalyptus</i> sp.	No koala signs.
26	<i>Eucalyptus salubris</i>	No koala signs.
27	<i>Eucalyptus camaldulensis</i>	No koala signs.
28	<i>Eucalyptus camaldulensis</i>	No koala signs.
29	<i>Eucalyptus largiflorens</i>	Some chewed leaves. No other koala signs.
30	<i>Eucalyptus largiflorens</i>	No koala signs.
31	<i>Eucalyptus largiflorens</i>	Some chewed leaves. No other koala signs.
32	<i>Eucalyptus largiflorens</i>	Some chewed leaves. No other koala signs.

The residual credit obligation associated with each area is given in **Table 2**. Note that the sum of all credits given here slightly exceeds the total number of credits associated with the combined proposal. This likely results from the rounding of certain figures for area within the BAM Calculator. This applies to cases where the separation of the two sites has left <0.01 ha of a particular vegetation zone within one site. These areas have been rounded up to 0.01 ha, resulting, in some cases, in an increased overall credit output. The full credit summary outputs are given in **Appendix A**.

Table 2. Comparison of credit outputs associated with cable routes and laydown areas

Threatened Entity	Cable Routes	Laydown Areas
<i>Ecosystem credits for plant community types (PCT), ecological communities & threatened species habitat</i>		
45_Remnant	3	15
45_Slashed	1	8
45_Plantings	2	N/A
26_Remnant	1	N/A
TOTAL	7	23
<i>Species credits for threatened species</i>		
<i>Austrostipa wakoolica</i> / A spear-grass	N/A (surveyed)	N/A
<i>Brachyscome muelleroides</i> / Claypan Daisy	N/A (surveyed)	38
<i>Brachyscome papillosa</i> / Mossiel Daisy	N/A (surveyed)	26
<i>Convolvulus tedmoorei</i> / Bindweed	N/A (surveyed)	21
<i>Lepidium monoplacoides</i> / Winged Peppergrass	N/A (surveyed)	26
<i>Leptorhynchus orientalis</i> / Lanky Buttons	N/A (surveyed)	26
<i>Lophochroa leadbeateri</i> / Major Mitchell's Cockatoo	N/A (surveyed)	26
<i>Phascolarctos cinereus</i> / Koala	N/A (surveyed)	N/A
<i>Pilularia novae-hollandiae</i> / Austral Pillwort	N/A (surveyed)	38
<i>Swainsona murrayana</i> / Slender Darling Pea	8	26
<i>Swainsona sericea</i> / Silky Swainson-pea	N/A (surveyed)	26
TOTAL	8	253

3. CONCLUSION

Impacts associated with the laydown areas would generate a substantially greater ecosystem credit obligation (23) than the cable routes (7). Likewise, the laydown areas would generate a substantially greater species credit obligation (253) than the cable routes (8), reflecting both the marked difference in size of the two proposed impact zones and the additional survey effort undertaken within the cable routes. Should the laydown areas no longer be required, as expected, the offset cost of the proposal should decrease markedly.

APPENDIX A – CREDIT SUMMARY REPORTS

Cable routes



BAM Biodiversity Credit Report (Like for like)

Proposal Details

Assessment Id	Proposal Name	BAM data last updated *
00032943/BAAS21028/22/00036458	Darlington Point - TG - Cable Routes	14/10/2022
Assessor Name	Assessor Number	BAM Data version *
David Orchard	BAAS21028	55
Proponent Names	Report Created	BAM Case Status
	01/12/2022	Open
Assessment Revision	Assessment Type	Date Finalised
0	Major Projects	To be finalised

* Disclaimer: BAM data last updated may indicate either complete or partial update of the BAM calculator database. BAM calculator database may not be completely aligned with Bionet.

Potential Serious and Irreversible Impacts

Name of threatened ecological community	Listing status	Name of Plant Community Type/ID
Nil		
Species		
Nil		

Additional Information for Approval

PCT Outside Ibra Added

Assessment Id	Proposal Name
00032943/BAAS21028/22/00036458	Darlington Point - TG - Cable Routes



BAM Biodiversity Credit Report (Like for like)

None added

PCTs With Customized Benchmarks

PCT

No Changes

Predicted Threatened Species Not On Site

Name

Grantiella picta / Painted Honeyeater

Haliaeetus leucogaster / White-bellied Sea-Eagle

Ecosystem Credit Summary (Number and class of biodiversity credits to be retired)

Name of Plant Community Type/ID	Name of threatened ecological community	Area of impact	HBT Cr	No HBT Cr	Total credits to be retired
26-Weeping Myall open woodland of the Riverina Bioregion and NSW South Western Slopes Bioregion	Myall Woodland in the Darling Riverine Plains, Brigalow Belt South, Cobar Penepplain, Murray-Darling Depression, Riverina and NSW South Western Slopes bioregions	0.0	0	1	1
45-Plains Grass grassland on alluvial mainly clay soils in the Riverina Bioregion and NSW South Western Slopes Bioregion	Not a TEC	0.2	0	6	6

Assessment Id

00032943/BAAS21028/22/00036458

Proposal Name

Darlington Point - TG - Cable Routes

Page 2 of 5



BAM Biodiversity Credit Report (Like for like)

26-Weeping Myall open woodland of the Riverina Bioregion and NSW South Western Slopes Bioregion

Like-for-like credit retirement options

Name of offset trading group	Trading group	Zone	HBT	Credits	IBRA region
Myall Woodland in the Darling Riverine Plains, Brigalow Belt South, Cobar Peneplain, Murray-Darling Depression, Riverina and NSW South Western Slopes bioregions This includes PCT's: 26, 27, 37, 43, 49, 55, 145, 159, 1766	-	26_Remnant	No	1	Murrumbidgee, Darling Depression, Lachlan, Lachlan Plains, Lower Slopes, Murray Fans, Robinvale Plains and South Olary Plain. or Any IBRA subregion that is within 100 kilometers of the outer edge of the impacted site.

45-Plains Grass grassland on alluvial mainly clay soils in the Riverina Bioregion and NSW South Western Slopes Bioregion

Like-for-like credit retirement options

Class	Trading group	Zone	HBT	Credits	IBRA region
-------	---------------	------	-----	---------	-------------

Assessment Id

00032943/BAAS21028/22/00036458

Proposal Name

Darlington Point - TG - Cable Routes

Page 3 of 5



BAM Biodiversity Credit Report (Like for like)

	Riverine Plain Grasslands This includes PCT's: 44, 45	Riverine Plain Grasslands $\geq 50\%$ and $< 70\%$	45_Remnant	No	3	Murrumbidgee, Darling Depression, Lachlan, Lachlan Plains, Lower Slopes, Murray Fans, Robinvale Plains and South Olary Plain. or Any IBRA subregion that is within 100 kilometers of the outer edge of the impacted site.
	Riverine Plain Grasslands This includes PCT's: 44, 45	Riverine Plain Grasslands $\geq 50\%$ and $< 70\%$	45_Slashed	No	1	Murrumbidgee, Darling Depression, Lachlan, Lachlan Plains, Lower Slopes, Murray Fans, Robinvale Plains and South Olary Plain. or Any IBRA subregion that is within 100 kilometers of the outer edge of the impacted site.
	Riverine Plain Grasslands This includes PCT's: 44, 45	Riverine Plain Grasslands $\geq 50\%$ and $< 70\%$	45_Plantings	No	2	Murrumbidgee, Darling Depression, Lachlan, Lachlan Plains, Lower Slopes, Murray Fans, Robinvale Plains and South Olary Plain. or Any IBRA subregion that is within 100 kilometers of the outer edge of the impacted site.

Assessment Id

00032943/BAAS21028/22/00036458

Proposal Name

Darlington Point - TG - Cable Routes

Page 4 of 5



BAM Biodiversity Credit Report (Like for like)

Species Credit Summary

Species	Vegetation Zone/s	Area / Count	Credits
Swainsona murrayana / Slender Darling Pea	26_Remnant, 45_Remnant, 45_Slashed, 45_Plantings	0.2	8.00

Credit Retirement Options

Like-for-like credit retirement options

Swainsona murrayana / Slender Darling Pea	Spp	IBRA subregion
	Swainsona murrayana / Slender Darling Pea	Any in NSW

Assessment Id

00032943/BAAS21028/22/00036458

Proposal Name

Darlington Point - TG - Cable Routes

Page 5 of 5

Laydown areas



BAM Credit Summary Report

Proposal Details

Assessment Id	Proposal Name	BAM data last updated *
00032943/BAAS21028/22/00036461	Darlington Point - TG - Laydowns	14/10/2022
Assessor Name	Report Created	BAM Data version *
David Orchard	04/11/2022	55
Assessor Number	BAM Case Status	Date Finalised
BAAS21028	Open	To be finalised
Assessment Revision	Assessment Type	
0	Major Projects	

* Disclaimer: BAM data last updated may indicate either complete or partial update of the BAM calculator database. BAM calculator database may not be completely aligned with Bionet.

Ecosystem credits for plant communities types (PCT), ecological communities & threatened species habitat

Zone	Vegetation zone name	TEC name	Current Vegetation integrity score	Change in Vegetation integrity (loss / gain)	Area (ha)	Sensitivity to loss (Justification)	Species sensitivity to gain class	BC Act Listing status	EPBC Act listing status	Biodiversity risk weighting	Potential SAIL	Ecosystem credits
Plains Grass grassland on alluvial mainly clay soils in the Riverina Bioregion and NSW South Western Slopes Bioregion												
1	45_Remnana	Not a TEC	71.3	71.3	0.47	PCT Cleared - 60%	High Sensitivity to Gain			1.75		15

Assessment Id
00032943/BAAS21028/22/00036461

Proposal Name
Darlington Point - TG - Laydowns

Page 1 of 5



BAM Credit Summary Report

2	45_Slashed	Not a TEC	66	66.0	0.27	PCT Cleared - 60%	High Sensitivity to Gain			1.75		8
											Subtotal	23
											Total	23

Species credits for threatened species

Vegetation zone name	Habitat condition (Vegetation Integrity)	Change in habitat condition	Area (ha)/Count (no. individuals)	Sensitivity to loss (Justification)	Sensitivity to gain (Justification)	BC Act Listing status	EPBC Act listing status	Potential SAIL	Species credits
Brachyscome muelleroides / Claypan Daisy (Flora)									
45_Remnant	71.3	71.3	0.47	Geographic Distribution	Ability to colonise improved habitat	Vulnerable	Vulnerable	True	25
45_Slashed	66.0	66.0	0.27	Geographic Distribution	Ability to colonise improved habitat	Vulnerable	Vulnerable	True	13
								Subtotal	38
Brachyscome papillosa / Mossgiel Daisy (Flora)									
45_Remnant	71.3	71.3	0.47	Biodiversity Conservation Act listing status	Ability to colonise improved habitat	Vulnerable	Vulnerable	False	17

Assessment Id

00032943/BAAS21028/22/00036461

Proposal Name

Darlington Point - TG - Laydowns

Page 2 of 5



BAM Credit Summary Report

45_Slashed	66.0	66.0	0.27	Biodiversity Conservation Act listing status	Ability to colonise improved habitat	Vulnerable	Vulnerable	False	9
								Subtotal	26
<i>Convolvulus tedmoorei / Bindweed (Flora)</i>									
45_Remnant	71.3	71.3	0.4	Population size	Ecology or response to management is poorly known	Endangered	Not Listed	True	21
								Subtotal	21
<i>Lepidium monoplocoides / Winged Peppergrass (Flora)</i>									
45_Remnant	71.3	71.3	0.47	Biodiversity Conservation Act listing status	Effectiveness of management in controlling threats	Endangered	Endangered	False	17
45_Slashed	66.0	66.0	0.27	Biodiversity Conservation Act listing status	Effectiveness of management in controlling threats	Endangered	Endangered	False	9
								Subtotal	26

Assessment Id

00032943/BAAS21028/22/00036461

Proposal Name

Darlington Point - TG - Laydowns

Page 3 of 5



BAM Credit Summary Report

Leptorhynchos orientalis / Lanky Buttons (Flora)

45_Remnant	71.3	71.3	0.47	Biodiversity Conservation Act listing status	Effectiveness of management in controlling threats	Endangered	Not Listed	False	17
45_Slashed	66.0	66.0	0.27	Biodiversity Conservation Act listing status	Effectiveness of management in controlling threats	Endangered	Not Listed	False	9
Subtotal									26

Lophochroa leadbeateri / Major Mitchell's Cockatoo (Fauna)

45_Remnant	71.3	71.3	0.47	Biodiversity Conservation Act listing status	Species dependent on habitat attributes	Vulnerable	Not Listed	False	17
45_Slashed	66.0	66.0	0.27	Biodiversity Conservation Act listing status	Species dependent on habitat attributes	Vulnerable	Not Listed	False	9
Subtotal									26

Pilularia novae-hollandiae / Austral Pillwort (Flora)

45_Remnant	71.3	71.3	0.47	Geographic Distribution	Ecology or response to management is poorly known	Endangered	Not Listed	True	25
------------	------	------	------	-------------------------	---	------------	------------	------	----

Assessment Id

00032943/BAAS21028/22/00036461

Proposal Name

Darlington Point - TG - Laydowns

Page 4 of 5



BAM Credit Summary Report

45_Slashed	66.0	66.0	0.27	Geographic Distribution	Ecology or response to management is poorly known	Endangered	Not Listed	True	13
								Subtotal	38
<i>Swainsona murrayana / Slender Darling Pea (Flora)</i>									
45_Remnant	71.3	71.3	0.47	Biodiversity Conservation Act listing status	Ability to colonise improved habitat	Vulnerable	Vulnerable	False	17
45_Slashed	66.0	66.0	0.27	Biodiversity Conservation Act listing status	Ability to colonise improved habitat	Vulnerable	Vulnerable	False	9
								Subtotal	26
<i>Swainsona sericea / Silky Swainson-pea (Flora)</i>									
45_Remnant	71.3	71.3	0.47	Biodiversity Conservation Act listing status	Ability to colonise improved habitat	Vulnerable	Not Listed	False	17
45_Slashed	66.0	66.0	0.27	Biodiversity Conservation Act listing status	Ability to colonise improved habitat	Vulnerable	Not Listed	False	9
								Subtotal	26

Assessment Id

00032943/BAAS21028/22/00036461

Proposal Name

Darlington Point - TG - Laydowns

Page 5 of 5