



Riverina Battery Energy Storage System (BESS) Stage

State Significant Development (SSD 8392)



CPP Project No: 11291

Current Revision

Revision: 1.2 Revision Date: 07/06/2022

Task:	Responsibility:	Date:	Signature:
-------	-----------------	-------	------------

Developed by:	Nick To		
---------------	---------	--	--

Review by Responsible Site Manager:	Liam Chambers		
-------------------------------------	---------------	--	--

Approved by Accountable Project Manager:	Luke Perabo		
--	-------------	--	--

TABLE OF CONTENTS

1	INTRODUCTION	5
2	SCOPE	6
2.1	Project Stages	6
3	PURPOSE	7
3.1	Plan Development	7
3.2	Plan Revisions	8
3.3	Consolidated Power Projects (CPP) Commitment	8
3.4	Consultation	8
3.5	Public Access to Information	8
4	PROJECT SPECIFIC DETAILS	9
4.1	Project Details	9
4.2	Project Scope of Works	10
4.3	Map of Project	11
4.4	Site Location	13
5	COMMUNITY PROFILE (SECTION 8.8 OF THE EIS)	15
6	EMPLOYMENT	19
6.1	CPP Project Needs	19
6.2	Strategies	20
7	ACCOMMODATION	21
7.1	CPP Project Needs	21
	COLONY INN MOTEL	23
7.2	Strategies	23
8	MONITORING AND REVIEW	24
	APPENDIX A CONSULTATION RECORDS	26
A.1	Council	26

TABLE OF FIGURES

Figure 1 - Map of Project (1)	11
Figure 2 - Map of Project (2)	12
Figure 3 - Legend and Signage	13
Figure 4 - Site Location	14
Figure 5 - From Site to Coleambally	15
Figure 6 - From Site to Griffith	16
Figure 7 - From Site to Jerilderie	17
Figure 8 - Timeline for Civil Works, Mechanical and Electrical Installation	20

TABLE OF TABLES

Accommodation and Employment Strategy

Riverina Battery Energy Storage System (BESS) Stage
Riverina Battery Energy Storage System (BESS) Stage
CPP Project No: 11291

Table 1 - Revision Log.....	4
Table 2 - Staging of Project.....	6
Table 3 - Relevant Conditions from Consolidated Consents.....	7
Table 4 - Project Specific Details.....	9
Table 5 - CPP Project Needs	19
Table 6 - Strategies for Local Employment.....	20
Table 7 - Accommodation Details.....	21
Table 8 - Long-term and Short-term Stay Strategies	23

Table 1 – Revision Log

Revision Log		
From Revision	To Revision	Summary of Changes
A	0	<ul style="list-style-type: none"> Add section 2 Scope Update section 3 Purpose, including addition of section 3.3 and 3.4 Remove reference to 'Signal Energy' on section 6.1 Add section 6.2 Employment Strategies Update Site Manager and Project Manager details Change peak number of 50 staffs on section 6 to 40 staffs to match previous section. Updated missing detail on row 3 of the table in section 6.1 General update of all sections
0	0.1	<ul style="list-style-type: none"> Appendix A.1 Consultation Records – Council updated Additional site map added to section 4.3
0.1	1	<ul style="list-style-type: none"> Table of figures and tables added. Staging of the project added in Section 2.1. Additional requirement under Consolidated Consent on Plan revision updated in Section 3.2 and 3.5. Link for public access to this plan and information for making complaints provided in Section 3.5. Section 4.2 amended to reflect current SOW. Lot and DP number added, images revised to show Scale and North Arrow in Section 4.4. Section 6.2 revised as per continued engagement to stakeholder added and additional strategies updated. All appropriate details updated in Section 6.1 and 7.1. Performance indicators added in Section 8.
1	1.1	<ul style="list-style-type: none"> Updated to address Riverina Energy Storage System/Darlington Point BESS (SSD-8392-PA-21) Post Approval Review
1.1	1.2	<ul style="list-style-type: none"> Updated to address Riverina Energy Storage System/Darlington Point BESS (SSD-8392-PA-21) Post Approval Review

1 INTRODUCTION

Consolidated Power Projects (CPP) specialises in providing full turnkey high voltage solutions for power utility, industrial, resource and renewable energy sectors.

We offer specialist design, construction, commissioning and maintenance of high voltage infrastructure. As a trusted partner to Australia's largest renewable and power transmission utility companies, we continue to deliver successful, large-scale projects including battery infrastructure, solar and wind farms, and high voltage transmission substations.

All CPP employees, engaged subcontractors and visitors shall meet the requirements of this document as applicable to their specific project works and responsibilities.

A copy of the plan and or any revisions to the plan shall be retained for the duration of the project.

This plan shall be amended following any significant events, or if there are significant changes to project scope, methodology, risk profile or legislation and ensure that each relevant person affected by the amendment is advised of the details of the amendment or given a copy of the amendment.

Implementation of this plan shall be monitored via the internal audit process and site inspections.

The Project Manager is the owner responsible for the implementation of this plan.

As a company, CPP strives for continuous improvement daily, both as individuals as well as an organisation. Our core values reflect who we are and define our approach to doing business.

Consolidated Power Projects core values are:

Team Work - One team, together we achieve;

Integrity - Doing the right thing / doing what's right;

Innovation - Always learning, creating, adapting; and

Sustainability - Ensuring our future.

“Strive for Quality Excellence”

“Strive for Safety Excellence”

“Strive for Environmental Excellence”

2 SCOPE

This Accommodation and Employment Strategy (AES) provides a framework for accommodation and employment strategies of the construction phases of the Riverina Energy Storage System, being the Battery Energy Storage System (BESS) project (the Project) of the Darlington Point Solar Farm development (the Development), as relating to the scope of works within Lot 1 DP1249830 and Lot 2 DP1249830. The Project also involves a scope of works for the connection and cables within the Transgrid 330/132kV Darlington Point Substation (TG DP Sub) on Lot 2 DP628785. These cables will connect the BESS to the TG DP Sub.

As this BESS stage of the Development is a separate project, to the extent the Solar Farm and BESS required different scope of works and construction contractors, and will be managed and operated by different parties. It has been determined a standalone AES (this document) is required for the BESS project.

This AES applies exclusively to the Darlington Point BESS site, inclusive of the Riverina BESS 132/33kV Substation. Other works associated with the Darlington Point Solar Farm are not covered by or detailed in this plan. Please note that the construction and commissioning for the Darlington Point Solar Farm has been completed as part of a previous stage of the Development.

This AES applies to the planning, construction and defects liability phases of all works to be undertaken as part of the Project. It applies to all workers, contractors, labour hire and suppliers working on the project.

This AES should be read in conjunction with other project documents and plans developed by CPP for the DP BESS Project, including:

- Construction Environmental Management Plan
- Biodiversity Management Plan
- Traffic Management Plan
- Chance Find Protocol (Signal Energy)
- Emergency Management Plan
- Community Consultation and Engagement Plan (Edify)
- CPP Policies and Procedures

2.1 Project Stages

The Engineering, Procurement and Construction portion of the Project is comprised of 2 stages. The stages are itemised as follows:

Table 2 - Staging of Project

Stage of the Development	Project Stage	Duration (From - To)	Notes
2a	Works inclusive of Site Establishment, Civil earthworks, detailed civil and concrete works	20/06/22 – 22/12/22	Refer to Section 4.2 for detailed scope of work.
2b	All other required works including Mechanical and Electrical Installation	09/01/23 – 25/12/23	

Operation and decommission of this project are not in CPP's Scope of Works and will be provided in separate document(s) by others.

3 PURPOSE

The purpose of this AES is to assess and devise a strategy to ensure that appropriate accommodation options are made available for the project workforce within the local area throughout the duration of the project and to investigate the prioritisation of opportunities for employment of local workers and content.

3.1 Plan Development

This AES has been developed in accordance with the requirements of:

- Relevant Client and CPP guidelines and procedures
- Relevant Client project documentation including:
 - RESS EPC Schedule 04 – Permits
 - Edify Energy – Darlington Point State Significant Development (SSD 8392) Modification Report – Battery Energy Storage System – June 2021
 - Edify Energy – Darlington Point Solar Farm – Environmental Impact Assessment – Final 16 April 2018

This AES has been prepared by CPP to meet the requirements set out in Item 28 (Schedule 3 - Environmental Conditions – General) of the Development Consent (Application # SSD 8392). Item 28 of the Development Consent states:

ACCOMMODATION AND EMPLOYMENT STRATEGY

28. Prior to the commencement of construction, the Applicant must prepare an Accommodation and Employment Strategy for the development in consultation with Council, and to the satisfaction of the Secretary. This strategy must:

- (a) propose a strategy to facilitate the accommodation of the workforce associated with the development;*
- (b) investigate options for prioritising the employment of local workers for the construction and operation of the development where feasible; and*
- (c) include a program to monitor and review the effectiveness of the strategy over the life of the development.*

Following the Secretary's approval, the Applicant must implement the strategy.

Table 3 - Relevant Conditions from Consolidated Consents

Condition	Relevant Section of this Strategy
<i>Propose a strategy to facilitate the accommodation of the workforce associated with the development</i>	<i>Section 7.1 and 7.2</i>
<i>Investigate options for prioritising the employment of local workers for the construction and operation of the development where feasible; and</i>	<i>Section 6.1 and 6.2</i>
<i>Include a program to monitor and review the effectiveness of the strategy over the life of the development</i>	<i>Section 8</i>

To avoid any confusion regarding responsibility throughout this strategy, CPP responsible for implementing this strategy with their engaged employees and subcontractors relevant to our scope of works.

3.2 Plan Revisions

Management plan updates will be managed via an Appendix at the rear of the plan.

Electronic word versions and the hardcopies will have the updates highlighted and added to the Appendix.

All updates are to be included when either:

- A major update is released; or
- Every 3 months

Major revisions (1.0, 2.0, 3.0):

- are where there is a significant change to construction requirements or project management methodology

Minor revisions (2.1, 2.2, 2.3):

- are likely to include items such as changes of a minor nature following a management review of the Accommodation and Employment Strategy or referenced documents, any change in the name or numbering of a referenced document, changes to names or contact numbers of key personnel contacts.

This plan will also be revised up by 1 major revision, if deems necessary following a review by CPP, to the satisfaction of the Secretary within 1 month of the:

- submission of an incident report under condition 4 of Schedule 4 of the Consolidated Consents;
- submission of an audit report under condition 6 or 7 of Schedule 4 of the Consolidated Consents; or
- any modification to the condition of the Consolidated Consents.

3.3 Consolidated Power Projects (CPP) Commitment

Our Project AES encompasses and reflects our commitment to meeting customer requirements for safety, performance, and value in relation to our delivered products.

3.4 Consultation

The Consolidated Consent requires this plan to be developed in consultation with the Murrumbidgee Council, and to the satisfaction of the Secretary.

See Appendix A.1 for email correspondence between CPP and Council. A draft AES was sent to Council on 27 January 2022. A response from Murrumbidgee Council was received on 8 March 2022 acknowledging that the CPP plan submitted was satisfactory.

Furthermore, CPP submitted the draft plans to Tesla on 3 February 2022. Formal comments were received from Tesla and Edify on 24 February 2022. CPP have addressed these comments and updated the AES accordingly.

3.5 Public Access to Information

Under Condition 8 of Schedule 4 of the Consolidated Consents, this plan will be publicly available via Edify Energy's website – <https://edifyenergy.com/project/riverina-darlington-point/>

Complaints in relation to Construction activities can be sent to RiverinaBESS@conpower.com.au

4 PROJECT SPECIFIC DETAILS

4.1 Project Details

Table 4 - Project Specific Details

Project Specific Details	
Client:	Tesla Motors Pty Ltd
Principal Contractor:	Consolidated Power Projects
Project Name:	Riverina Battery Energy Storage Systems
Project Number:	11291
Project Address:	336 Donald Ross Drive, Darlington Point, NSW 2706
Project Manager:	Luke Perabo
Site Manager:	Liam Chambers

4.2 Project Scope of Works

At stage 2a of The Development, the scope of work includes the following components:

- Preparation of construction, compound, laydown, and parking areas
- Bulk earthworks inclusive of topsoil stripping, cut to fill, import to fill, capping layer and surfacing layer
- Road works including internal roads, kerbing, surfacing and interface with existing solar farm access road
- Security fencing including post and sill foundations, perimeter chainmesh and weldmesh fencing and gates
- Landscaping and rehabilitation inclusive of trimming batters, table drainage, earth shaping and seeding
- Earth grid installation
- Stormwater drainage system inclusive of pits, pipes, headwalls, and table drains
- Spill oil drainage system inclusive of pits, pipes, spill oil tank and headwalls
- 33kV direct buried cable installation within BESS yard (from RMU's to 33kV Switchgear building)
- Electrical pit and conduit system installation
- Equipment, structure and building foundations inclusive of major and minor foundations for the BESS and associated substation
- Ancillary equipment and minor structure deliveries

4.3 Map of Project

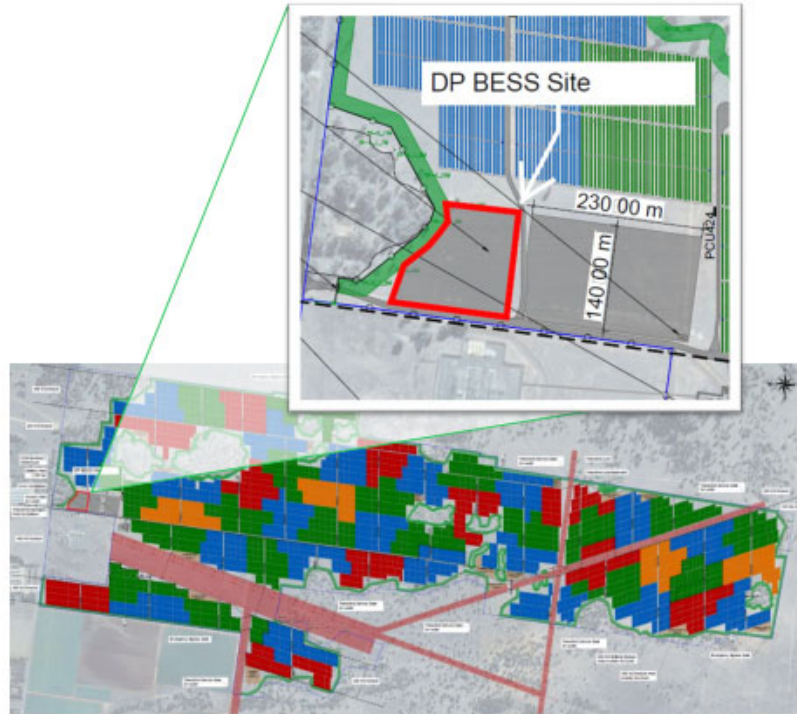


Figure 1 - Map of Project (1)

Accommodation and Employment Strategy

Riverina Battery Energy Storage System (BESS) Stage
Riverina Battery Energy Storage System (BESS) Stage
CPP Project No: 11291

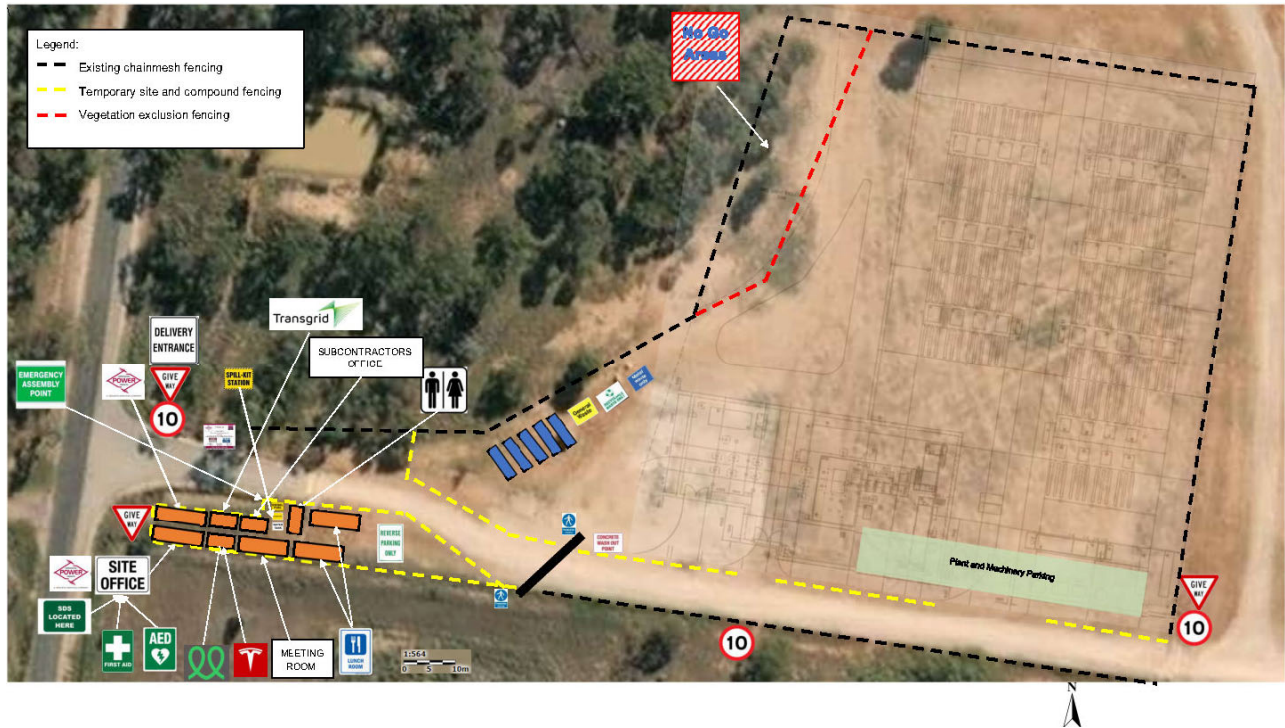


Figure 2 - Map of Project (2)



Figure 3 - Legend and Signage

4.4 Site Location

The project site is located at Lot 1, DP 1249830 and Lot 2, DP1249830, 336 Donald Ross Dr, Darlington Point NSW 2706.

The site coordinates are approximately 34°38'49.3"S 146°02'02.9"E

The site will be accessed directly from the Sturt Highway and Donald Ross Drive.

Google Maps Sydney NSW to Darlington Point Solar Farm

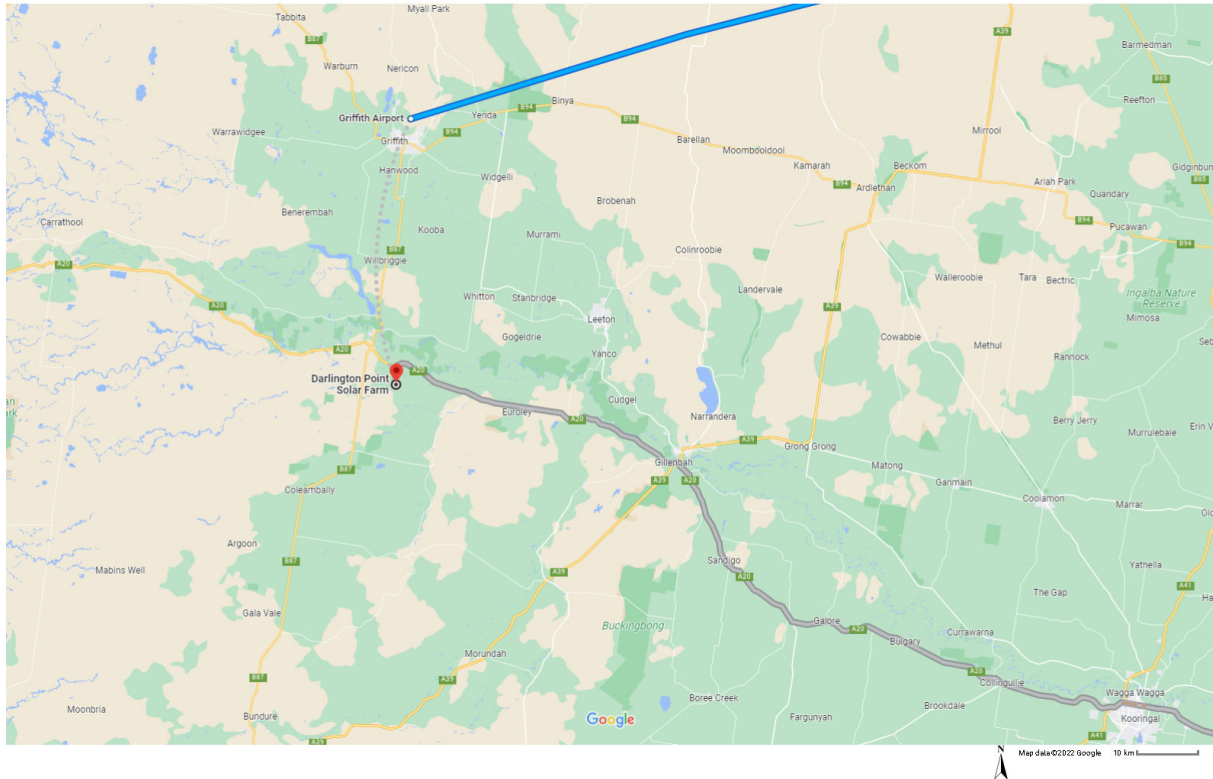


Figure 4 - Site Location

5 COMMUNITY PROFILE (SECTION 8.8 OF THE EIS)

Darlington Point is a small town of approximately 1,160 people located on the banks of the Murrumbidgee River in the north of the Murrumbidgee LGA (ABS, 2016). Darlington Point is approximately 10 kilometres north-west of the DPSF site.

Coleambally, the other main town within close proximity to the DPSF site, is approximately 31.6 kilometres south-west, or 25 minutes driving, of the DPSF site and had a population of 1,331 people in the 2016 Census.

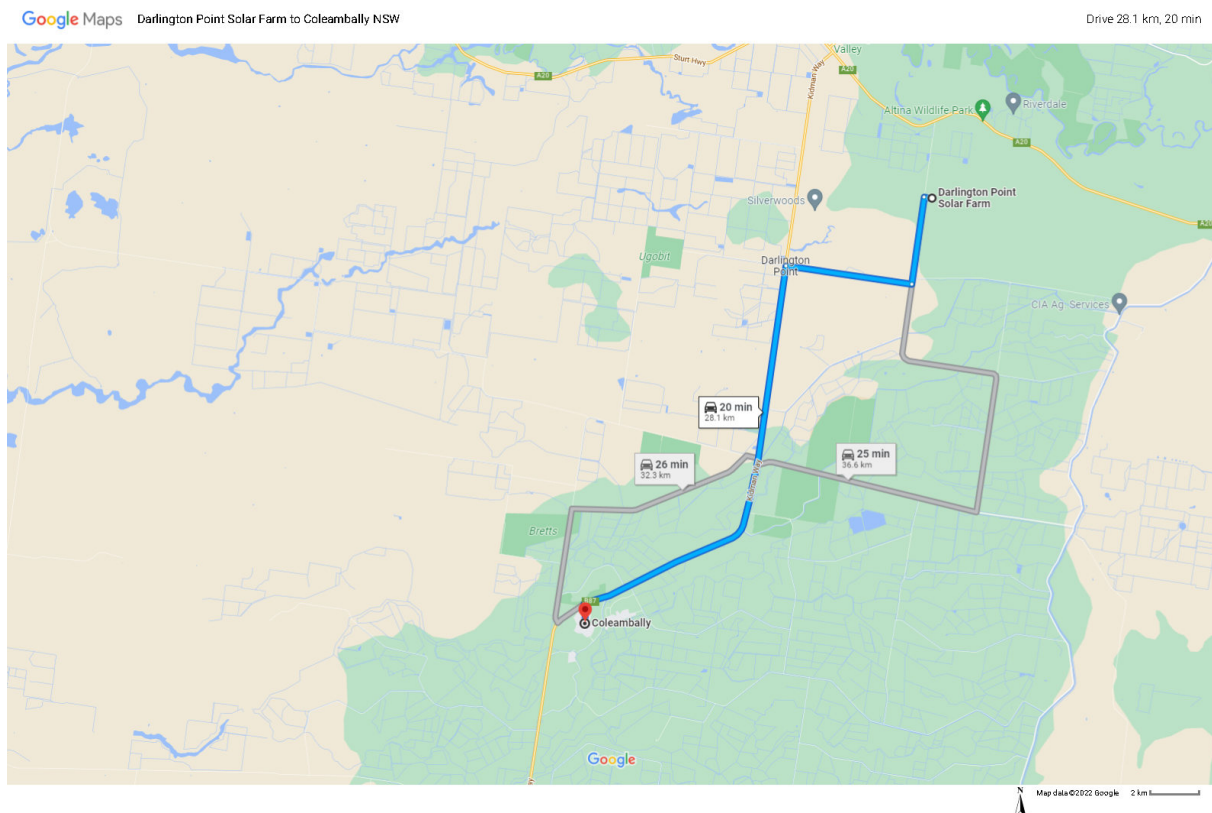


Figure 5 - From Site to Coleambally

Another major town is Griffith which is approximately 50 kilometres north or 45 minutes driving, and had a population of 18,874 people (ABS, 2016).

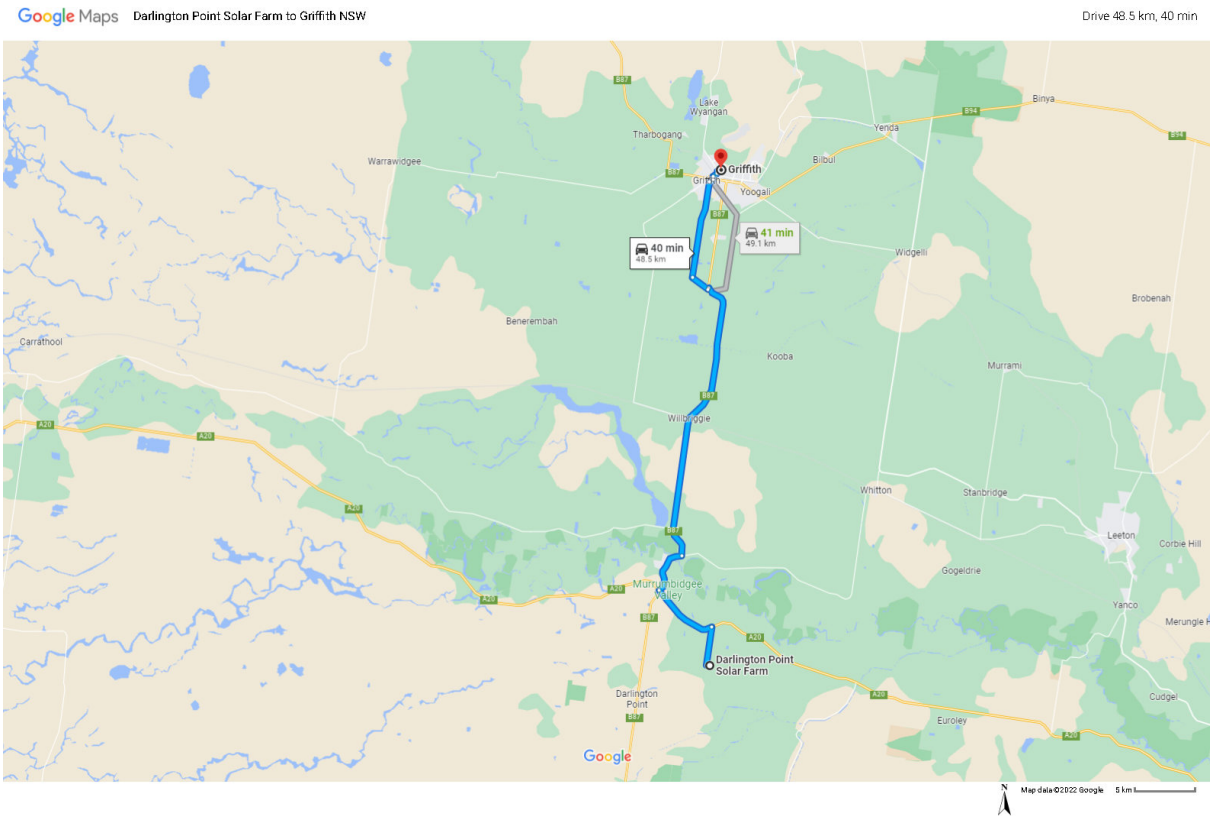


Figure 6 - From Site to Griffith

The township of Jerilderie, which is approximately 100 kilometres south of the DPSF site or 1 hour's drive, had a population of 1,029 people (ABS, 2016). The wider Murrumbidgee LGA had a population of 3,836 people (ABS, 2016).

Google Maps Darlington Point Solar Farm to Jerilderie NSW

Drive 96.1 km, 1 hr 1 min

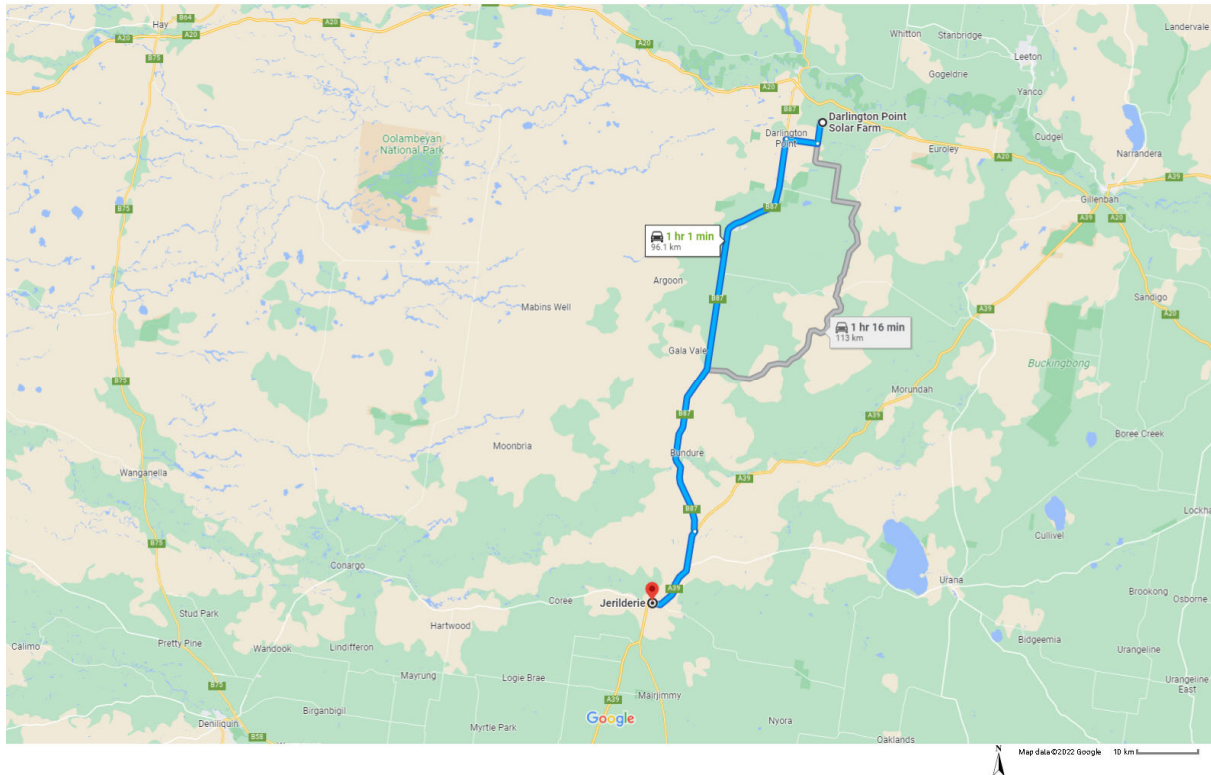


Figure 7 - From Site to Jerilderie

The town centre of Darlington Point provides social and community infrastructure for local residents within the region. Key services include a police station, post office, primary school, community health service, recreational parks, and swimming pool.

Griffith, a larger town of 18,196 people, is located 35.6 kilometres to the north of the proposed DPSF site in the adjoining shire and is a major service centre for Darlington Point. The main form of local employment in Darlington Point was poultry processing at 11.5 percent and local government administration at 5.1 percent (ABS, 2016). For the wider Murrumbidgee LGA, sheep, beef cattle and grain farming provided approximately 17.8 percent of employment (ABS, 2016). The unemployment rate for Darlington Point was 7.0 percent, which was higher than the wider Murrumbidgee LGA at 4.5 percent, but was similar to the national rate of 6.9 percent (ABS, 2016). Historically, irrigated agriculture and the processing of agricultural products have been key industries in the Murrumbidgee Council. Walking, camping, fishing and other water-based activities on the Murrumbidgee River are the main focus of tourism activities in the district (Murrumbidgee Council, 2017).

Events in the local area attract visitors from the wider region and include, but are not limited to:

- Darlington Point Spring Festival (annually in September)
- Taste Coleambally Festival (bi-annual event in October)
- Taste Riverina (annually in October)
- Griffith Spring Fest Garden Festival (annually in October).

The proposed development will have a positive employment impact during construction. Overall, it is considered that the development would have a positive socio-economic impact on the local area during construction, given the significant economic boost the additional work would generate. It is further considered that the expected adverse impacts would be minimal given the temporary nature of construction phase and through the implementation of appropriate environmental management controls. The creation of long-term employment and demand from local associated business will have a positive economic and social impact. Further, there is a greater societal, social and economic benefit gained through the substitution of carbon-based electricity production with renewable energy sources which are consistent with State and National greenhouse emission reduction objectives.

6 EMPLOYMENT

6.1 CPP Project Needs

CPP propose deliver the projects in the following manner during construction period of the BESS:

Table 5 - CPP Project Needs

Work Portion	Personnel Numbers
Bulk Earthworks (Excavating, grading, laydown area construction, bench construction), Drainage and conduits – approx. 3 months	<p>Estimated 10 personnel with maximum of 12 personnel</p> <p>Local Opportunities</p> <ul style="list-style-type: none"> 3-5 local employment opportunities including wet and dry hire of machinery (e.g., grader, excavators, water trucks etc.) Engagement of local quarries for gravels, fill materials, construction materials etc.
Detailed civil and concrete works (dig, lay, backfill of underground services, and form, reo, pour of concrete foundations) – approx. 5 months	<p>Estimated 20 personnel with maximum of 22 personnel</p> <p>Local Opportunities</p> <ul style="list-style-type: none"> 5 local employment opportunities including labourers and trade assistants as well as the engagement of local quarries (e.g., concrete trucks etc.) Engagement of local quarries for concrete materials. Engagement of local business for grout, formwork, and any other construction materials.
<p>Mechanical installation (installation of primary plants e.g., 33kV switchgear, transformers and megapacks).</p> <p>CPP anticipate that a majority of work would take approx. 6 months. We allow for the additional 4 months to ensure all works will be completed. The additional period will require minimal human resources.</p>	<p>Estimated 10 personnel with maximum of 11 personnel</p> <p>Local Opportunities</p> <ul style="list-style-type: none"> 2 local employment opportunities predominantly trade assistants Engagement of local crane companies for lifting with operator and riggers. Engagement of local business for grout, formwork, and any other construction materials.
<p>Electrical installation (installation of High/Low voltage cables, mis materials, commissioning etc.).</p> <p>CPP anticipate that a majority of work would take approx. 6 months. We allow for the additional 5 months to ensure all works will be completed. The additional period will require minimal human resources.</p>	<p>Estimated 20 personnel with maximum of 22 personnel</p> <p>Local Opportunities</p> <ul style="list-style-type: none"> 3-5 local employment opportunities predominantly trade assistants. Engagement of local business for electrical materials

	Jun-22	Jul-22	Aug-22	Sep-22	Oct-22	Nov-22	Dec-22	Jan-23	Feb-23	Mar-23	Apr-23	May-23	Jun-23	Jul-23	Aug-23
Bulk Earthwork															
Detailed Civil and Concrete Works															
Mechanical Installation															
Electrical Installation															

Figure 8 - Timeline for Civil Works, Mechanical and Electrical Installation

It is expected that local individuals and businesses would be engaged directly by each of the above work crews and/or subcontractors.

The overall anticipated number of construction workers on site will be in the order of 40 staffs at the peak of construction. We have predicted there could be up to 17 employment opportunities for local resources for labours and trade assistants. Any non-local specialised contractors are likely to come from other areas of NSW and Queensland and would utilise accommodation in Darlington Point, Coleambally, Griffith and surrounding areas. Most of the construction staff movements will be made to/from site using private vehicles with 2 or 3 personnel sharing one vehicle from nominated areas dependent on accommodation.

During construction other opportunities within the LGA also may include: -

- Food preparation and delivery to site workers for lunches
- Increase in Groceries purchased in the LGA
- Increase in Hospitality services to accommodate meals and entertainment.
- Local logistic companies for site deliveries
- Local business engagement for construction material purchases

6.2 Strategies

CPP propose the below strategies to prioritise the employment of Local Workers for the construction of the BESS facility.

Table 6 - Strategies for Local Employment

Strategies	Details	Action	Timing
Community Forum in Darlington Point	A community event hosted by Edify and Tesla to detail the BESS upcoming works and potential community opportunities.	CPP to attend the forum and provide a means for parties to detail their services and register interest in the project	Scheduled for 22 March 2022
CPP to engage with Murrumbidgee Council	CPP has already commenced consultation and will advertise opportunities via council media outlets	CPP to provide media release information quarterly to Murrumbidgee Council	Starting March 2022
CPP to engage with local subcontractors and suppliers	CPP to engage with and vet local subcontractor capability for subcontracted works	CPP to ensure capable local subcontractors are given the opportunity to quote subcontracted packages	Starting March 2022
CPP to engage with its Subcontractors	This Strategy will be provided to Subcontractors	CPP will monitor the compliance of this	Starting April 2022

Strategies	Details	Action	Timing
		Strategy through scheduled subcontractor progress meetings	
Legal right to work and Temporary Visa workers	CPP to work with engaged Subcontractors	CPP will ensure that all workers on the project have the legal right to work in Australia, and are appropriately trained, qualified and experienced for their allocated duties. CPP will ensure Temporary visa workers in Australia, if any, will be given basic rights.	Project Duration

To ensure the employment of local workforce is prioritised and maximised through local suppliers and subcontractors, CPP also propose the following subsequent strategies:

- At early stages of Project, CPP will ensure that regional and local suppliers and subcontractors are invited to express their interests and given equal opportunities to provide quotes for the supply of goods and services. CPP will request the suppliers and subcontractors shortlisted to provide any details regarding local workers. This will be one of the major considerations for contract award.
- During execution of project, CPP will share details of any local workers that we collect through our online media advertisement and forms and encourage our subcontractors to maximise employment opportunities to target the local workforce.

7 ACCOMMODATION

7.1 CPP Project Needs

Considering the number of workers will be in the order of 40 staffs at the peak, CPP workers would be staying in local property rental or short-term accommodation (e.g., motels, motor inns, cabins etc.) available in towns such as Griffith, Coleambally and Darlington Point. Accommodation options in Darlington Point and in surrounding areas include the below. Note, that CPP workers will also engage with other motel providers should the below are not available at the time.

Table 7 - Accommodation Details

Accommodation Details			
Name	Location	Phone No.	Website
Darlington Point			
Darlington Point Club Cabins	6 Demamiel St, Darlington Point NSW 2706	(02) 6968 4146	https://dpclub.com.au/accommodation/

Hawkesbury Park Country Cottage	15162 Sturt Highway, Darlington Point NSW 2706	02 6968 4380	https://www.bedroomvillas.com.au/property/hawkesbury-park-country-cottage/AB-16579372 Also available through Airbnb.
Darlington Point Riverside Caravan Park	Kidman Way, Darlington Point NSW 2706	0447 639 442	https://www.darlingtonpointcaravanpark.com.au/
Punt Hotel	5 Punt Rd, Darlington Point NSW 2706	02 6968 4108	https://www.thepunthotel.com.au/
Tulluc Cottages	1 MacLeay St, Darlington Point NSW 2706	02 6963 4370	https://www.tulluccottages.com.au/
Villa By Rivadestra	8 Punt Road Darlington Point	02 6968 4881	http://www.villabyrivadestra.com/
Griffith (35.6 KM North)			
Acacia Motel	44 Jondaryan Ave, Griffith	(02) 6966 4422	enquiries@acaciamotel.com.au
Citrus Motel	71-73 Jondaryan Ave, Griffith	(02) 6962 6233	admin@citrusmotel.com.au
Econo Lodge Motor Inn Griffith	96 Banna Avenue, Griffith	(02) 6962 1800	http://www.griffithmotorinn.com.au/
Exies Bagtown Motel	2-4 Blumer Avenue, Griffith NSW 2680	(02) 6962 7166	bagtown@exies.com.au
Griff Hotel	Cnr Ulong & Yambil Streets, Griffith NSW 2680	(02) 6964 0170	reception@griffhotel.com.au
Kidman Wayside Inn	58-72 Jondaryan Avenue, Griffith New South Wales 2680	02 6964 5666	http://the-kidman-wayside-inn.newsouthwaleshotels.net/en/
Coleambally (31.6 KM South)			
Coleambally Motel	Kingfisher Avenue	02 6954 4223	http://www.coleamballymotel.com.au/
Coleambally Caravan Park	66 Kingfisher Avenue	02 6954 4100	http://www.coleamballycaravanpark.com.au/

Brolga Hotel & Motel	Brolga Place	02 6954 4009	http://www.brolgahotelmotel.com.au/accommodation.html
Jerilderie (Approx. 100 KM South)			
Jerilderie Motor Inn	4 Jerilderie St, Jerilderie NSW 2716	03 5886 1360	https://www.jerilderiemotorinn.com.au/
Jerilderie Budget Motel	1 Newell Hwy, Jerilderie NSW 2716	03 5886 1301	No website available.
Colony Inn Motel	26 Jerilderie St, Jerilderie NSW 2716	03 5886 1220	No website available.

7.2 Strategies

Overall construction and support staff both long term and short term will work with local business owners to endeavour to not impact on the tourism visitors to the Murrumbidgee Shire Council Region. To ensure minimal impact of short-term accommodation in the area CPP propose the following:

Table 8 - Long-term and Short-term Stay Strategies

Type of Personnel	Proposed accommodation type
Site Management Team and Supervisors (3 full time staffs) – only long-term accommodation required	Will work with Local property owners, real-estate agents to secure long-term accommodation in the Murrumbidgee LGA or surrounding areas including Griffith (i.e. 9-12 months approx.)
CPP Management Team for short-term visit – only short-term accommodation required	Will likely stay in one of the nominated motels in Section 7
Civil construction crews incl. bulk earthworks, detailed civil and concrete works subcontractors	Anticipated to have approximately 10-20 personnel. Maximum can potentially go up to 22 personnel. These activities are anticipated to occur from June 2022 to January 2023 – as per figure 10. Will coordinate with Local property owners, real-estate agents to secure short-term accommodation in the Murrumbidgee LGA or surrounding areas including Griffith (where readily available) or will endeavour to stay at one of the nominated motels in Section 7. CPP or other responsible parties will attempt to organise accommodation in advance to minimise impact to short-term accommodation for tourism. CPP will attempt to continuously monitor and update our subcontractors with any potential influx of tourists.
Electrical and mechanical labour	Anticipated to have approximately 20-30 personnel. Maximum can potentially go up to 32 personnel. These activities are anticipated to occur from October 2022 to August 2023 – as per figure 10. Will work with Local property owners, real-estate agents to secure short-term accommodation in the Murrumbidgee LGA or surrounding areas including Griffith (where readily available) or will endeavour to stay at one of the nominated motels in Section 7. CPP or other responsible parties will attempt to organise accommodation in advance to minimise impact to short-term accommodation for tourism. CPP will attempt to continuously monitor and update our subcontractors with any potential influx of tourists.

It shall be noted that the works associated with the BESS facility are of much smaller magnitude compared to the Darlington Point Solar Farm construction and therefore it is not expected that this stage of the development would have any major impact to local accommodation availability.

8 MONITORING AND REVIEW

To ensure this plan is effective during the implementation of activities, and adapts as required to new information, the following review actions will be undertaken alongside implementation activities:

- Attending community meetings and liaise with local business owners
- Project/Site manager to provide our labour force and subcontractors with this strategy and review the implementation of this plan regularly.
- Keep an accurate record of all feedback from consultation activities and all correspondence with the community.
- Project/Site manager to participate in regular meetings (as agreed by Council if required) during the Construction phase of the project.
- Provide this Strategy to the major Subcontractors engaged by CPP.
- Project/Site manager to include updates on compliance of this strategy into project monthly reports.
- If poor compliance with this plan is identified, specific items to be reviewed are:
 - Review of accommodation impacts
 - Review of Strategies
 - Review of complaints and control measures
- As required, the Accommodation and Employment Strategy will be updated to reflect the assigned corrective actions.

Multiple Key Performance Indicators (KPI) will be implemented to measure the effectiveness of this plan:

- Number of Complaints:
 - All complaints in relation to CPP's work portion will be captured. This will give CPP an indication of the effectiveness of this plan.
 - This KPI will be monitored on a weekly basis. Any complaints received would initiate a review. Appropriate actions would be taken to ensure the effective implementation of this plan.
- Number of Local Businesses engaged:
 - CPP will monitor the number of businesses we would subcontract and/or procure for site services and goods. This KPI will be monitored on a monthly basis.
- Feedback from Businesses regarding tendering to supply:
 - CPP will monitor the feedback from local businesses and others during tendering and ensure equal opportunities are given to all tenderers.

This KPI will be monitored on a monthly basis. All feedback received from the tenderers will be recorded and any issue would initiate a review. Appropriate actions would be taken to ensure the effective implementation of this plan.

All review actions will be circulated in Pre-Start meetings and site meetings between CPP Project Management, Site Management team, SQE advisor and the responsible subcontractor's representative where deemed necessary.



Accommodation and Employment Strategy

Riverina Battery Energy Storage System (BESS) Stage
Riverina Battery Energy Storage System (BESS) Stage
CPP Project No: 11291

APPENDIX A CONSULTATION RECORDS

A.1 Council

Perabo, Luke

From: Steven Parisotto <StevenP@murrumbidgee.nsw.gov.au>
Sent: Tuesday, 8 March 2022 3:02 PM
To: Perabo, Luke
Subject: RE: Construction Certificate, TMP and Accommodation & Employment Strategy

Follow Up Flag: Follow up
Flag Status: Flagged

[EXTERNAL]

Hi Luke,

As per my message earlier this afternoon.

The AES is satisfactory.

The TMP (from a local roads perspective) is satisfactory.

As per Council's previous advice the local roads may not be able to take the loads especially at drainage channel/culvert crossings. A dilapidation report is required to be submitted to Council prior to the commencement of works and once construction works are completed. It is an expectation that any damage to local roads would be repaired at no cost to Council.

Regards

Steven Parisotto
Senior Planner



Murrumbidgee
COUNCIL

T 1300 MRMBGE (676243) StevenP@murrumbidgee.nsw.gov.au
21 Carrington Street Darlington Point NSW 2706
PO Box 96 Jerilderie NSW 2716

PLEASE NOTE: Unless stated otherwise, this email, together with any attachments, is intended for the named recipient(s) only and may contain privileged and confidential information. If received in error, you are asked to inform the sender as quickly as possible and delete this email and any copies of this from your computer system. If you are not the intended recipient of this email, you must not copy, distribute or take any action that relies on it and any form of disclosure, modification, distribution and/or publication of this email is prohibited. We have taken precautions to minimise the risk of transmitting software viruses, but you are advised to carry out your own virus checks on any part of this message including any attachments. We cannot accept liability for any loss or damage caused by software viruses.

From: Perabo, Luke <lperabo@conpower.com.au>
Sent: Tuesday, 8 March 2022 1:50 PM
To: Steven Parisotto <StevenP@murrumbidgee.nsw.gov.au>
Cc: To, Nick <nickto@conpower.com.au>; Novianto, Andreas <anovianto@conpower.com.au>
Subject: RE: Construction Certificate, TMP and Accommodation & Employment Strategy

Hi Steven,

Thanks for your voicemail. Can you please respond to this email with your comments so that we can include this in our formal consultation records.

Regards,

Luke Perabo
Project Manager
Consolidated Power Projects Australia Pty Ltd
Mobile: +61 427 856 460
Email: lperabo@conpower.com.au | Web: www.conpower.com.au
Address: Unit 4A, 54-62 Ferndell St, South Granville NSW 2142



The information transmitted in and with this email is intended only for the person or entity to which it is addressed and may contain confidential and/or privileged material. Any review, retransmission, dissemination or other use of, or taking of any action in reliance upon this information, by persons or entities other than the intended recipients is prohibited. If you received this transmission in error, please contact the sender and delete this email and associated material from all computers and/or systems. The intended recipient of this email may only use, reproduce, disclose or distribute the information contained in this email and any attached files, with the permission of the sender.

From: Novianto, Andreas <anovianto@conpower.com.au>
Sent: Thursday, 27 January 2022 1:04 PM
To: Steven Parisotto <StevenP@murrumbidgee.nsw.gov.au>
Cc: To, Nick <nickto@conpower.com.au>
Subject: RE: Construction Certificate, TMP and Accommodation & Employment Strategy

Hi Steven,

Thanks for your response. Let's park the CC alone for now until Kelly (is this correct?) gets back onboard.

Please find the attached Draft Traffic Management Plan and AES to facilitate any further/more specific comments.

Regards,

Andreas Novianto
Project Manager
Consolidated Power Projects Australia Pty Ltd



Office: +61 2 9645

9132
Fax: +61 2 9645 6256
Mobile: +61 428 193 074

Email: anovianto@quantaservices.com | Web: www.conpower.com.au

Address: Unit 4A, 54-62 Ferndell St, South Granville NSW 2142
Postal: South Granville NSW 2142

The information transmitted in and with this email is intended only for the person or entity to which it is addressed and may contain confidential and/or privileged material. Any review, retransmission, dissemination or other use of, or taking of any action in reliance upon this information, by persons or entities other than the intended recipients is prohibited. If you received this transmission in error, please contact the sender and delete this email and associated material from all computers and/or systems. The intended recipient of this email may only use, reproduce, disclose or distribute the information contained in this email and any attached files, with the permission of the sender.

From: Steven Parisotto <StevenP@murrumbidgee.nsw.gov.au>
Sent: Tuesday, 25 January 2022 9:24 AM
To: Novianto, Andreas <anovianto@conpower.com.au>
Subject: RE: Construction Certificate, TMP and Accommodation & Employment Strategy

[EXTERNAL]

Hi Andreas,

The absence of draft documentation relating to the CC, TMP and AES it is difficult to provide any meaningful comment.

The information required for TMP seems stock standard (and I think it is important that it also addresses other conditions). I am just waiting feedback from Council's Engineers as to any specifics they would like to see in respect to local council roads.

Council's building certification officer is currently on leave and will be back on 31/1 – I suspect that the CC will need to address the relevant provisions of the NCC and Australian Standards.

With regard to the AES, I have reviewed a number of similar documents that have been submitted as part of similar SSD projects. My only suggestion is that you follow those formats. I did discuss the matter with a former DPIE employee who has worked in major projects, and he indicated that the AES are signed off at a lower level. From Council's point of view it will be necessary to indicate the accommodation (eg motel name, etc).

Regards

From: Novianto, Andreas <anovianto@conpower.com.au>
Sent: Tuesday, 25 January 2022 8:59 AM
To: Steven Parisotto <StevenP@murrumbidgee.nsw.gov.au>
Cc: Dabaja, Abdul <adabaja@conpower.com.au>; To, Nick <nickto@conpower.com.au>
Subject: RE: Construction Certificate, TMP and Accommodation & Employment Strategy

Hi Steven,

Thanks for the below. Is there any update you could share with us?

Many thanks

Andreas

From: Steven Parisotto <StevenP@murrumbidgee.nsw.gov.au>
Sent: Thursday, 20 January 2022 6:15 AM

To: Novianto, Andreas <anovianto@conpower.com.au>
Subject: RE: Construction Certificate, TMP and Accommodation & Employment Strategy

[EXTERNAL]

Hi Andreas,

I will look into this and get back to you asap.

From: Novianto, Andreas <anovianto@conpower.com.au>
Sent: Wednesday, 19 January 2022 8:17 PM
To: Steven Parisotto <StevenP@murrumbidgee.nsw.gov.au>
Cc: To, Nick <nickto@conpower.com.au>; Dabaja, Abdul <adabaja@conpower.com.au>
Subject: Construction Certificate, TMP and Accommodation & Employment Strategy

Hi Steven,

Thank you for calling me back and appreciate your time on the phone earlier.
As discussed, CPP is undertaking the project Riverina Battery Energy Storage Systems located in Darlington Point Solar Farm.
The address is 336 Donald Ross Drive, Darlington Point. Lot no 1, DP 1249830

Per our discussion, CPP would like to get your guidance on the expectation on the application for construction certificate, traffic management plan and accommodation & employment strategy.

Please find the attached package containing:

1. Layout of the project with my markup
2. A copy of the consolidated consent.

Feel free to give me a call for further clarification or discussion.

Regards,

Andreas Novianto
Project Manager
Consolidated Power Projects Australia Pty Ltd



Office: +61 2 9645

9132

Fax: +61 2 9645 6256

Mobile: +61 428 193 074

Email: anovianto@quantaservices.com | Web: www.conpower.com.au

Address: Unit 4A, 54-62 Ferndell St, South Granville NSW 2142
Postal: South Granville NSW 2142

The information transmitted in and with this email is intended only for the person or entity to which it is addressed and may contain confidential and/or privileged material. Any review, retransmission, dissemination or other use of, or taking of any action in reliance upon this information, by persons or entities other than the intended recipients is prohibited. If you received this transmission in error, please contact the sender and