



Capital Insight Pty Limited
ABN 76 056 297 100
77 Berry Street
North Sydney NSW 2060
t 02 9955 2300
f 02 9955 5574
www.capitalinsight.com.au

MQU Arts Precinct

Macquarie University
Summary of Enabling Works

3 April 2017

Enabling Works

Enabling Works Packages (Apr-Dec 2017):

1. Internal Refurbishments to allow decanting Y3A, C3A & W6B
2. Temporary Accommodation in Y2 car park – 8 single storey classrooms + office/storage (650m²)
3. Tree pruning and removal
4. W6A & W6B internal demolition
5. Service Diversions
6. W6A&B external demolition and W6A core
7. Bulk earthworks into berm

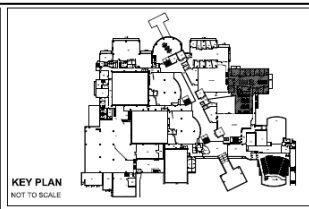
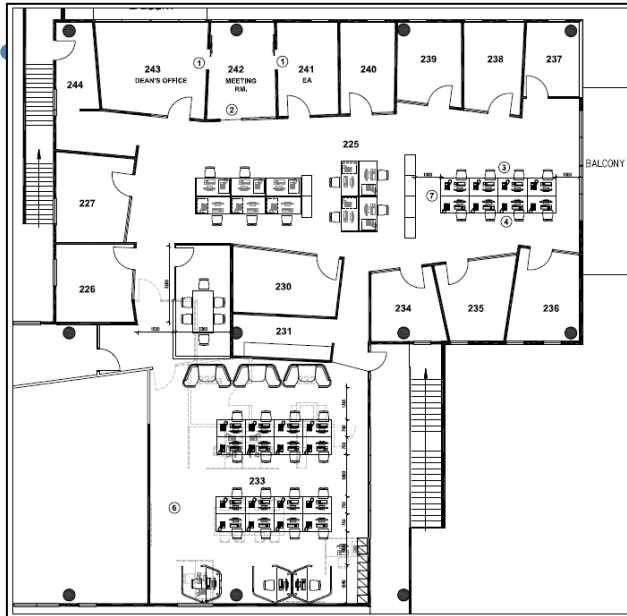
REF
Approval by
end May 2017

CoR DA
Approval by
end Nov 2017

SSD
Approval by
end Dec 2017

Main Works Construction

1. Example fitout works that allow decanting (REF)



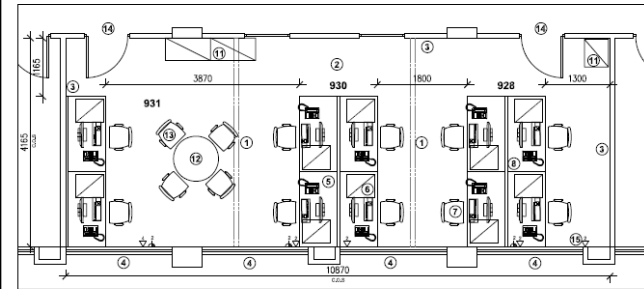
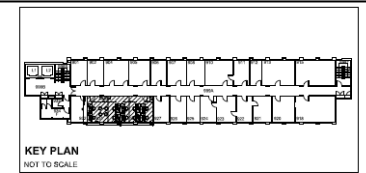
SCOPE OF WORKS -

1. New sliding doors to offices 243 & 241
2. Convert office 242 to meeting room; remove door and extend glazing or infill with solid wall (t.b.c)
3. Remove 4 x existing workstations and relocate off-site (storage location t.b.c)
4. 8 x new (1200x750) straight desks, melamine white finish
5. Retain existing 4 x task chairs; 4 x new task chairs to match existing
6. Refer to Room 233 Floor Plan drawing for Scope of Works
7. Double GPO - double data port provided on desktop for each new desk; services to be provided via existing umbilical from ceiling and to run under desks via cable tray; cables to be provided (nom. VGA/HDMI/Display Port)

Y3A

FACULTY OF ARTS - EXISTING OFFICE SPACE ROOMS 225-244.
 AREA = 416 sqm
 SCALE: 1:100 @ A3

CONCEPT DRAWING



SCOPE OF WORKS -

1. Demolish existing walls shown dashed
2. New carpet
3. Repair walls and patch as necessary - standard university white
4. New blinds to windows
5. Relocate 10 off standard 1500x750 straight desks from WBB
6. Relocate 10 off associated mobile pedestals for each desk from WBB
7. Relocate 10 off associated task chairs from WBB
8. Provide partition screens for 4-desk pods
9. New split-system AC unit to space (condenser to be located on roof - Technical Services to advise; (potential to re-use existing AC from Building WBB).
10. Remove existing ceiling fans
11. Relocate existing storage, whiteboards from WBB (quantity and type t.b.c)
12. 1 off small round meeting table, nominally 900 dia, white finish
13. 4 off meeting chairs to round table
14. Cardax security access to two entry doors
15. Existing data ports and GPOs - assess if adequate for workstations - provide additional as necessary

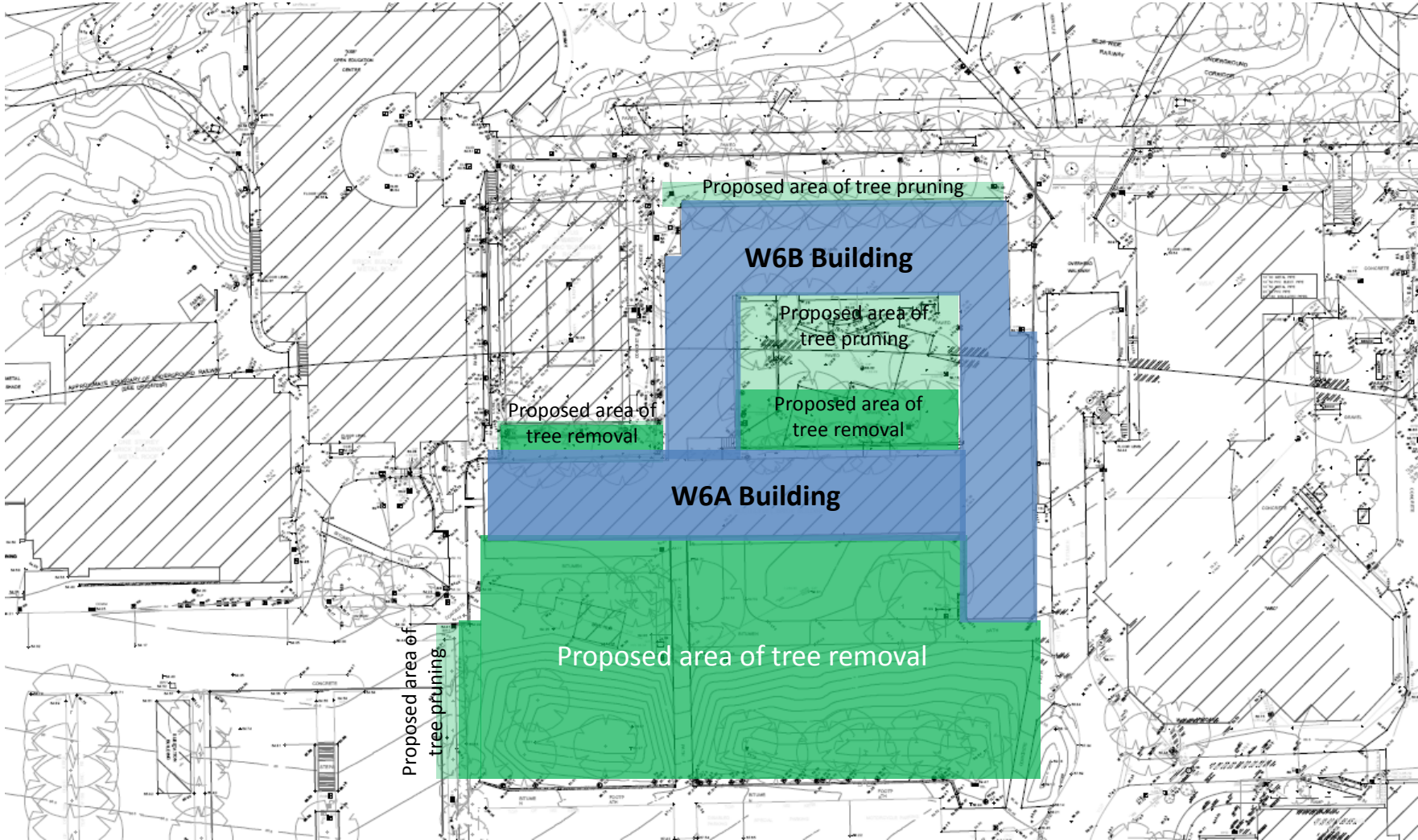
FACULTY OF ARTS - E-CLINIC SPACE, AREA = 45.6 sqm
 SCALE: 1:50



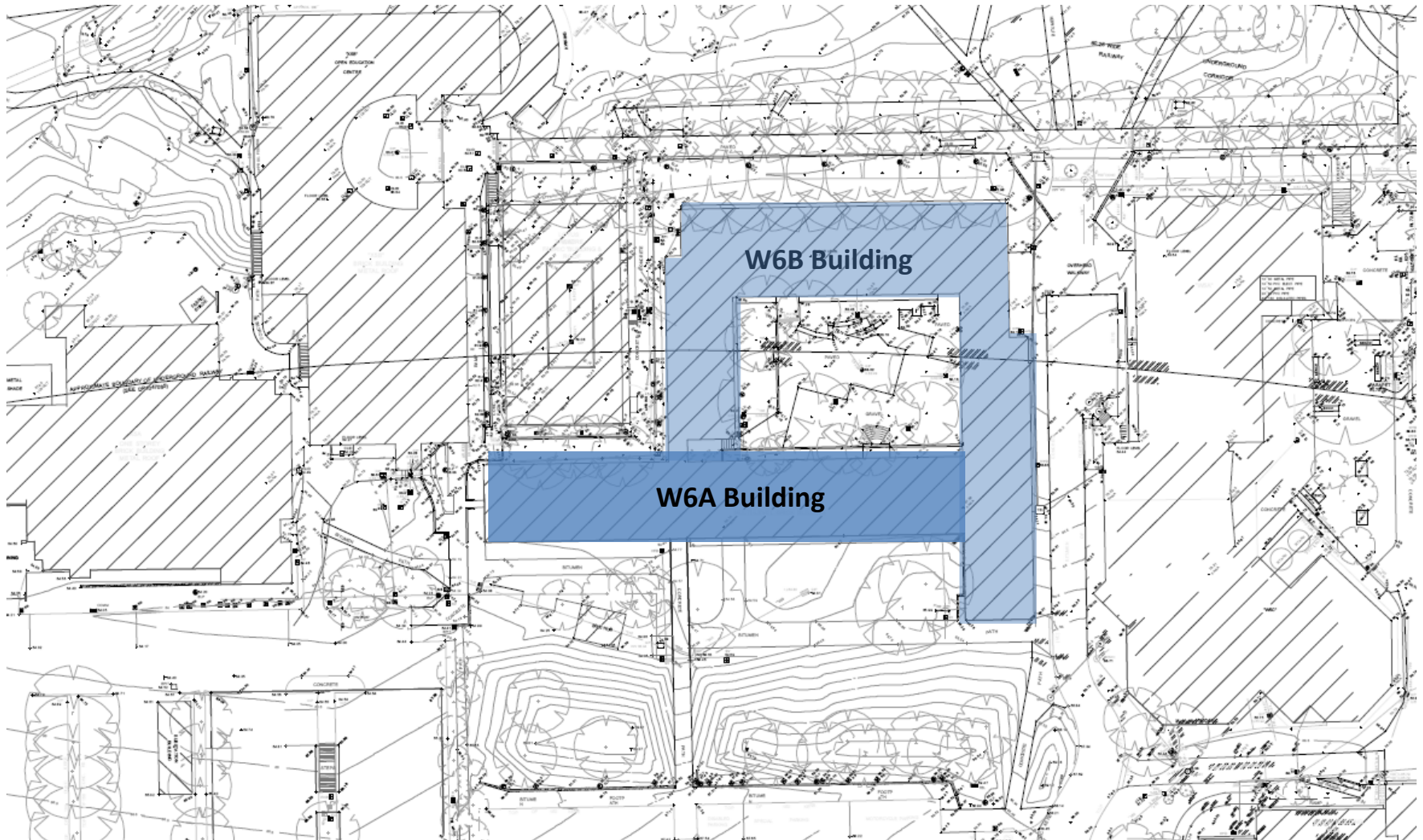
C3A



3. Tree Pruning and Removal (REF)

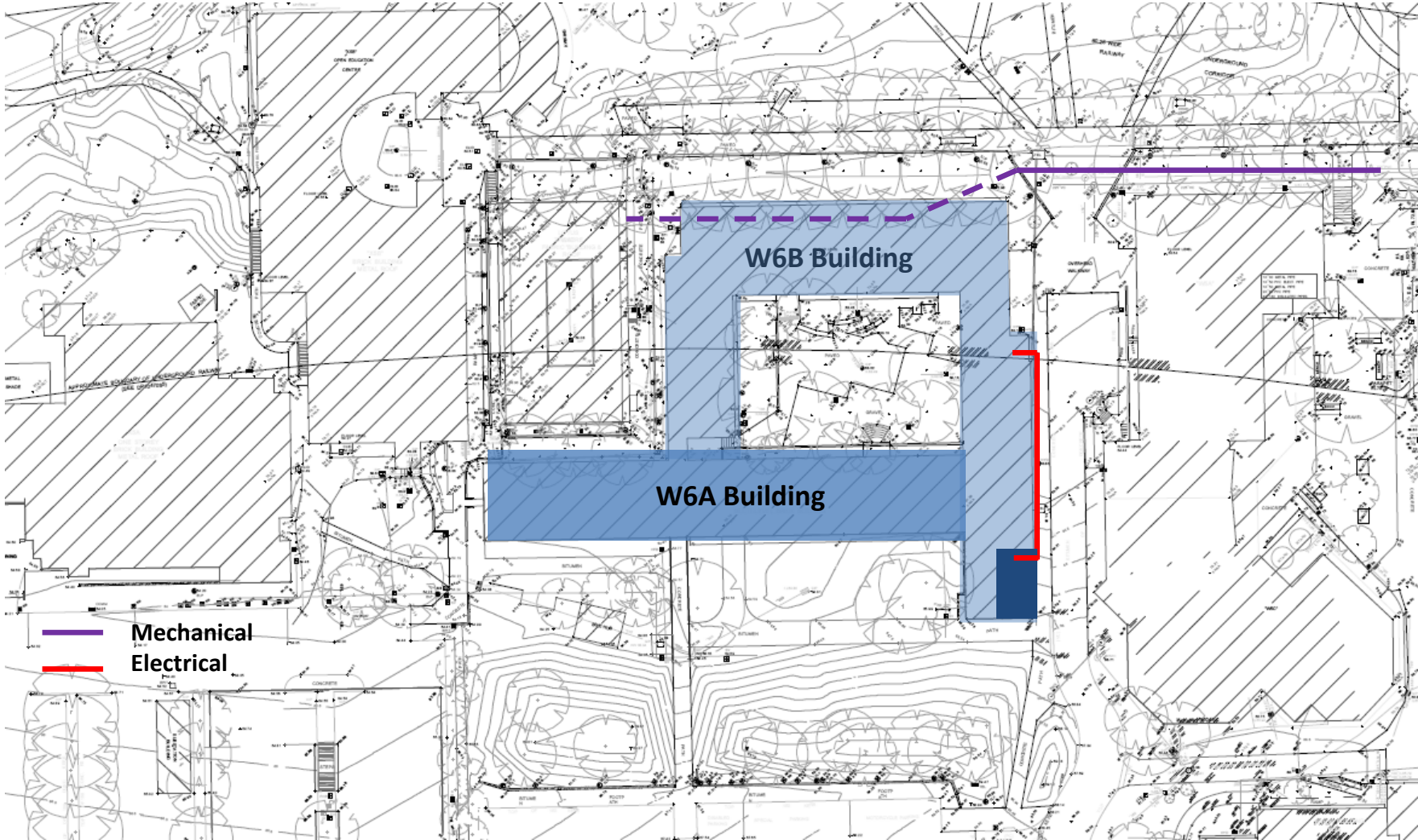


4. W6A internal demolition (REF)



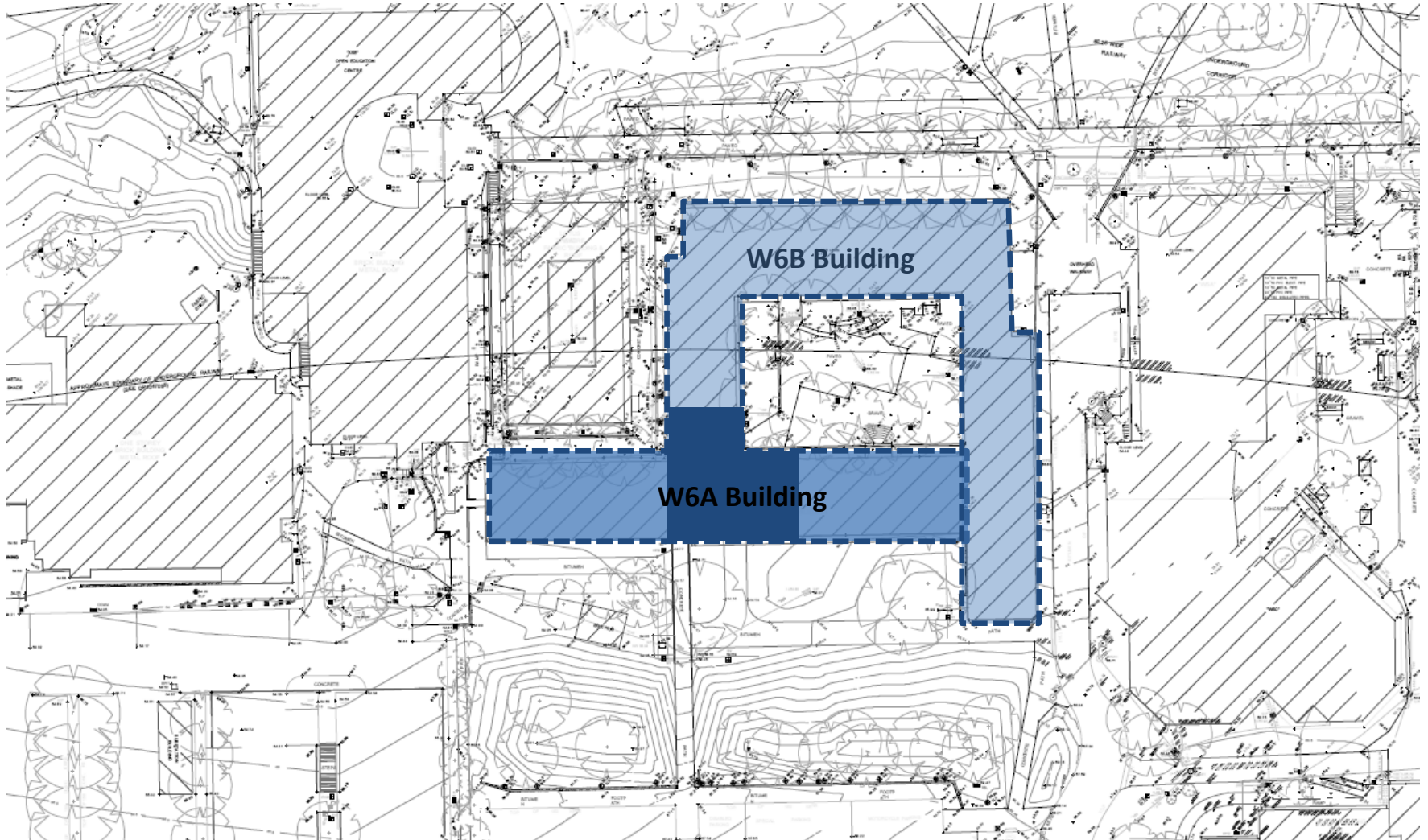


5. Service diversions – Mechanical & Electrical (REF)



 Mechanical
 Electrical

6. W6A&B external demolition and W6A core (DA)



7. Site remediation & excavation into berm (DA)

