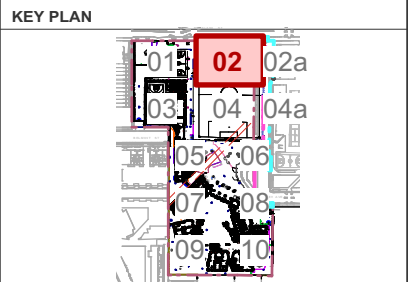



LEGEND	
	SITE / PROPERTY BOUNDARY
	EXTENTS OF WORK BOUNDARY
	PUBLIC DOMAIN WORKS BOUNDARY
	EXISTING TREE TO BE REMOVED
	EXISTING TREE TO BE RETAINED TPZ SHOWN
	PROPOSED TREE
	PROPOSED FINISHED GROUND LEVEL
	PROPOSED TOP OF WALL LEVEL
	MASSSED PLANTING TYPE (MP1-MP7) REFER TO MATERIALS SCHEDULE
	PAVING TYPE 1 - Concrete (Broom Finish) REFER TO MATERIALS SCHEDULE
	PAVING TYPE 2 - Concrete (Special) REFER TO MATERIALS SCHEDULE
	PAVING TYPE 2a - Concrete (Exposed Aggregate) REFER TO MATERIALS SCHEDULE
	PAVING TYPE 3a/b/c - FlexiPave REFER TO MATERIALS SCHEDULE
	PAVING TYPE 4 - FRP Mesh REFER TO CIVIL DOCUMENTATION
	PAVING TYPE 5 - Synthetic Turf (23mm) REFER TO MATERIALS SCHEDULE
	PAVING TYPE 6 - FlexiPave REFER TO MATERIALS SCHEDULE
	PAVING TYPE 7a/b - Softball REFER TO MATERIALS SCHEDULE
	PAVING TYPE 8 - Timber Decking REFER TO MATERIALS SCHEDULE
	PAVING TYPE 9 - Concrete Sleepers (Panel) REFER TO MATERIALS SCHEDULE
	PAVING TYPE 10 - Asphalt REFER TO ENGINEER'S DETAILS
	PAVING TYPE 11 - Synthetic Turf (PFA Grade) REFER TO MATERIALS SCHEDULE
	PAVING TYPE 12 - Playground Mulch REFER TO MATERIALS SCHEDULE
	PAVING TYPE 15 - Ecothera Paving REFER TO MATERIALS SCHEDULE
	WALL TYPE 1 - Insitu Concrete (200mm wide) REFER TO MATERIALS SCHEDULE
	WALL TYPE 2/a - Insitu Concrete Hob (150/200mm wide) REFER TO MATERIALS SCHEDULE
	WALL TYPE 3 - Insitu Concrete (400mm wide) REFER TO MATERIALS SCHEDULE
	WALL TYPE 4 - Insitu Concrete (600mm wide) REFER TO MATERIALS SCHEDULE
	WALL TYPE 5 - Precast Concrete (600mm wide) REFER TO MATERIALS SCHEDULE
	WALL TYPE 6 - Sandstone Stepping Wall REFER TO MATERIALS SCHEDULE
	WALL TYPE 7 - Sandstone Sealing (300mm wide) REFER TO MATERIALS SCHEDULE
	WALL TYPE 8 - Concrete Block (200mm wide) REFER TO MATERIALS SCHEDULE
	STAIR TYPE 1 - Insitu Concrete (300mm wide) REFER TO MATERIALS SCHEDULE
	STAIR TYPE 2 - Insitu Concrete Bleacher (600mm wide) REFER TO MATERIALS SCHEDULE
	STAIR TYPE 3 - Insitu Concrete Intermediate Stair (300mm wide) REFER TO MATERIALS SCHEDULE
	EDGE TYPE 1 - Steel Edge (On Grade) REFER TO MATERIALS SCHEDULE
	EDGE TYPE 2 - Steel Edge (On Slab) REFER TO MATERIALS SCHEDULE
	FURNITURE TYPES (FX1-FX14) REFER TO MATERIALS SCHEDULE
	FURNITURE TYPE FX3a/b - Bollard (Fixed/Removable) REFER TO MATERIALS SCHEDULE
	FURNITURE TYPE FX15a/b - Bollard (Fixed/Removable) REFER TO MATERIALS SCHEDULE
	FURNITURE TYPE FX15b - Existing bollard
	FURNITURE TYPE (BU) - Bubbler REFER TO ARCHITECTURE DRAWINGS
	HANDRAIL TYPE 1 - Top Mount REFER TO MATERIALS SCHEDULE
	HANDRAIL TYPE 2 - Wall Mount REFER TO MATERIALS SCHEDULE
	HANDRAIL TYPE 3 - Balustrade Mount REFER TO MATERIALS SCHEDULE
	BALUSTRADE TYPE 1 - Top Mount REFER TO MATERIALS SCHEDULE
	BALUSTRADE TYPE 2 - Top Mount on Wall REFER TO MATERIALS SCHEDULE
	BALUSTRADE TYPE 3 - Top Mount - 1200mm High REFER TO MATERIALS SCHEDULE
	BALUSTRADE TYPE 3a - Side Fixed - 1200mm High REFER TO MATERIALS SCHEDULE
	FENCE TYPE 1 - Diplomat Fence 2.1m High REFER ARCHITECTURAL DETAILS
	FENCE TYPE 2 - Existing Corten Fence 2.1m High
	FENCE TYPE 3 - Chain Link Fence 1.2m High REFER ARCHITECTURAL DETAILS
	FENCE TYPE 4 - Bastille Fence 2.1m High REFER FENCING & GATE PLAN L.CC.1003
	FENCE TYPE 5 - FFA Netting 7.0m High REFER ARCHITECTURAL DETAILS
	KERB TYPE 1 - New Concrete Kerb REFER ENGINEER'S DETAILS
	KERB TYPE 2 - Wheel Stop REFER ENGINEER'S DETAILS
	KERB TYPE 3 - Existing Stone Kerb Retained
	KERB TYPE 4 - Existing Stone Kerb Reused REFER ENGINEER'S DETAILS
	KERB TYPE 4 - Existing Concrete Kerb Retained
	GUTTER TYPE 1 - New Concrete Gutter REFER TO ENGINEER'S DETAIL
	GUTTER TYPE 2 - Existing Concrete Gutter Retained REFER TO ENGINEER'S DETAIL
	PROPOSED SERVICES REFER ENGINEERS DOCUMENTATION



<div>NOTE:</div> <div>VERIFY ALL DIMENSIONS ON SITE BEFORE COMMENCING WORK. REPORT ALL DISCREPANCIES TO LANDSCAPE ARCHITECT PRIOR TO CONSTRUCTION. FIGURED DIMENSIONS TO BE TAKEN IN PREFERENCE TO SCALED DRAWINGS. DRAWINGS MADE TO LARGER SCALES AND THOSE SHOWING PARTICULAR PARTS OF THE WORKS SHALL TAKE PRECEDENCE OVER DRAWINGS MADE TO SMALLER SCALE AND THOSE FOR GENERAL PURPOSES. ALL WORK IS TO CONFORM TO RELEVANT AUSTRALIAN STANDARDS AND OTHER CODES AS APPLICABLE, TOGETHER WITH OTHER AUTHORITIES' REQUIREMENTS AND REGULATIONS. DESIGN DRAWINGS BY OTHER DISCIPLINES HAVE BEEN INCLUDED FOR COORDINATION ONLY. THIS DRAWING AND DESIGN IS SUBJECT TO COPYRIGHT AND MAY NOT BE REPRODUCED WITHOUT PRIOR WRITTEN CONSENT. IF IN DOUBT, ASK.</div> <div>NOT FOR CONSTRUCTION</div>	<div>ISSUE</div> <div>DESCRIPTION</div> <div>BY</div> <div>APPD</div> <div>DATE</div>	<div>NORTH / SCALE</div> <div>Scale: 1:200</div> <div></div>	<div>PROJECT TEAM</div> <div>PROJECT MANAGER</div> <div>SAVILLS AUSTRALIA</div> <div>Level 25, Governor Phillip Tower, 1 Farrer Place, Sydney NSW 2000</div> <div>Telephone: (02) 8215 8888</div> <div>CIVIL ENGINEER</div> <div>SCP CONSULTING PTY LTD</div> <div>2/507 Kent St, Sydney NSW 2000</div> <div>Telephone: (02) 9267 9312</div> <div>APCS_CC_GF.vwx</div>	<div>LANDSCAPE ARCHITECT</div> <div>context</div> <div>Context Landscape Design Pty Ltd</div> <div>Level 2, 52-58 William Street, East Sydney NSW 2011</div> <div>PO Box A866 Sydney South NSW 1235</div> <div>T: 61 2 8244 8900 F: 61 2 8244 8988</div> <div>E: context@context.net.au W: www.context.net.au</div> <div>ABN: 14 093 350 719</div>	<div>CLIENT NAME</div> <div>DEPARTMENT OF EDUCATION</div> <div>PROJECT</div> <div>ALEXANDRIA PARK COMMUNITY SCHOOL</div> <div>PARK ROAD ALEXANDRIA 2015</div>	<div>DRAWING TITLE</div> <div>FINISHES & LEVELS PLAN 2 OF 8</div> <div>PROJECT STAGE</div> <div>ISSUE FOR CONSTRUCTION</div> <div>SHEET SIZE</div> <div>ISO A3</div> <div>PROJECT NUMBER</div> <div>19522</div> <div>DRAWING NUMBER</div> <div>L.COS.9002</div> <div>ISSUE</div> <div>C</div>
	<div>A</div> <div>ISSUE FOR COS REVIEW</div> <div>JK</div> <div>JK</div> <div>12/12/2019</div>			<div>BUILDER</div> <div>RICHARD CROOKES CONSTRUCTIONS</div> <div>Suite 501, Level 5/61 McLaren St, North Sydney NSW 2060</div> <div>Telephone: (02) 9902 4700</div>		
	<div>B</div> <div>ISSUE TO CITY OF SYDNEY COUNCIL</div> <div>MF</div> <div>JK</div> <div>26/02/2020</div>			<div>ARCHITECT</div> <div>TANNER KIBBLE DENTON ARCHITECTS</div> <div>Suite 501, Level 5/61 McLaren St, North Sydney NSW 2010</div> <div>Telephone: (02) 9281 4399</div>		
	<div>C</div> <div>ISSUE FOR SSDA MODIFICATION</div> <div>MF</div> <div>JK</div> <div>17/06/2020</div>					

NOT FOR CONSTRUCTION



KEY PLAN

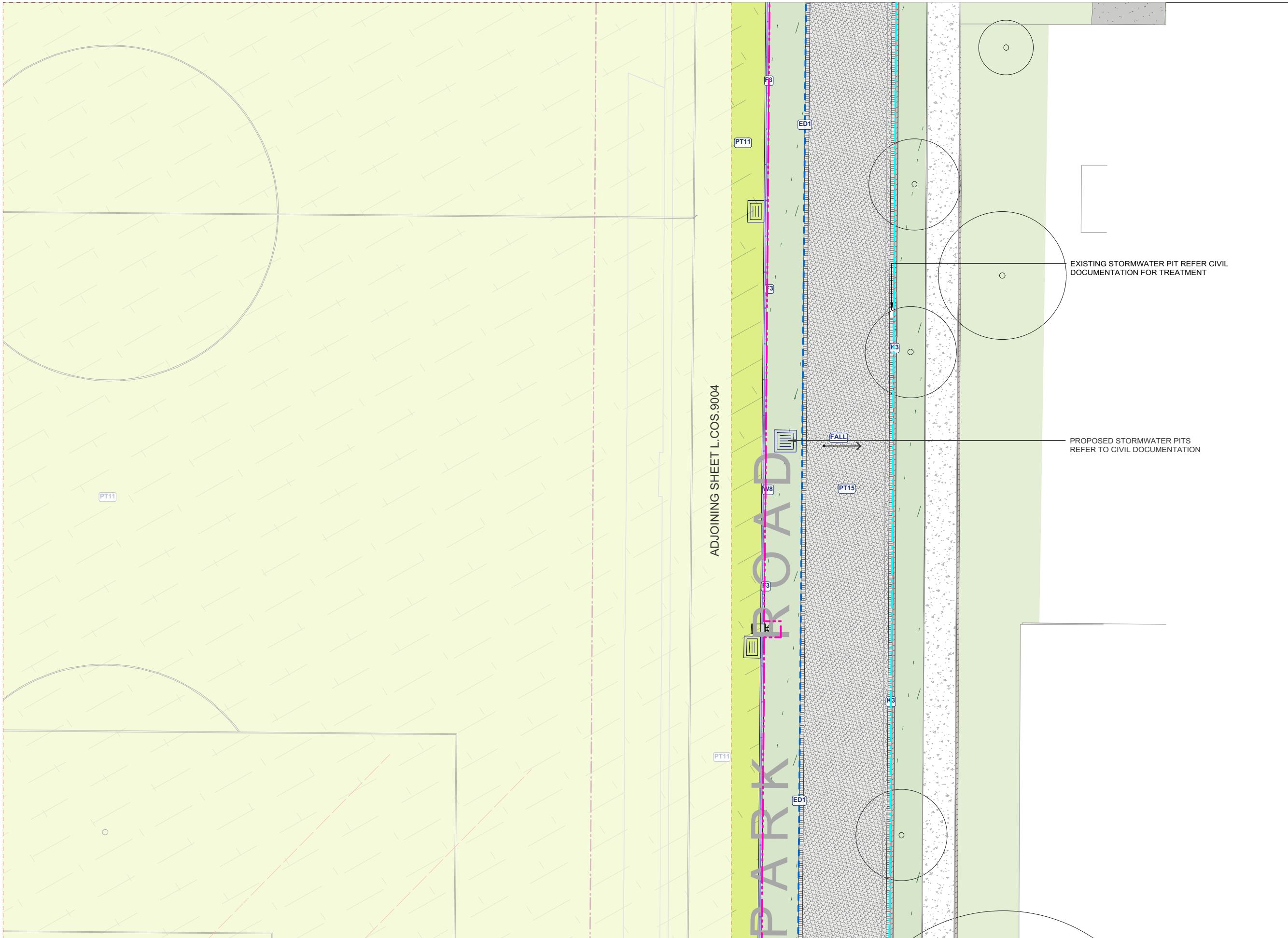
01 02 02a
03 04 04a
05 06
07 08
09 10

FINISHES & LEVELS PLAN 3 OF 8

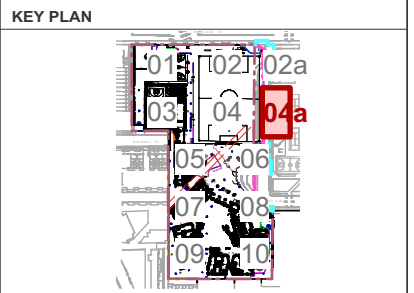
PROJECT STAGE ISSUE FOR CONSTRUCTION	SHEET SIZE ISO A3
PROJECT NUMBER DRAWING NUMBER	SHEET SIZE ISO A3

19522 L.COS.9003 C

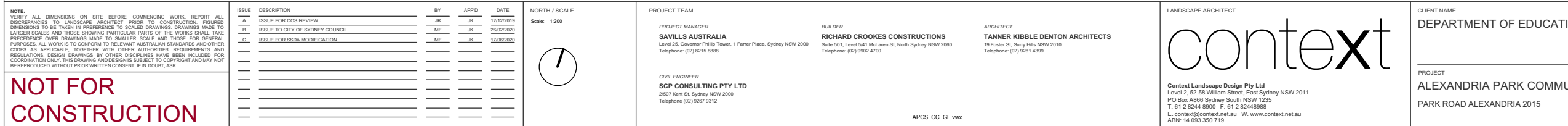
NOT FOR
CONSTRUCTION



LEGEND	
	SITE / PROPERTY BOUNDARY
	EXTENTS OF WORK BOUNDARY
	PUBLIC DOMAIN WORKS BOUNDARY
	EXISTING TREE TO BE REMOVED
	EXISTING TREE TO BE RETAINED TPZ SHOWN
	PROPOSED TREE
	PROPOSED FINISHED GROUND LEVEL
	PROPOSED TOP OF WALL LEVEL
	MASSSED PLANTING
	PAVING TYPE 1 - Concrete [Broom Finish] REFER TO MATERIALS SCHEDULE
	PAVING TYPE 2 - Concrete [Special] REFER TO MATERIALS SCHEDULE
	PAVING TYPE 3a/b/c - FlexiPave REFER TO MATERIALS SCHEDULE
	PAVING TYPE 4 - FRP Mesh REFER TO CIVIL DOCUMENTATION
	PAVING TYPE 5 - Synthetic Turf [23mm] REFER TO MATERIALS SCHEDULE
	PAVING TYPE 6 - FlexiPave REFER TO MATERIALS SCHEDULE
	PAVING TYPE 7a/b/c - Softball REFER TO MATERIALS SCHEDULE
	PAVING TYPE 8 - Timber Decking REFER TO MATERIALS SCHEDULE
	PAVING TYPE 9 - Concrete Sleepers [Pave] REFER TO MATERIALS SCHEDULE
	PAVING TYPE 10 - Asphalt REFER TO ENGINEER'S DETAILS
	PAVING TYPE 11 - Synthetic Turf [FIFA Grade] REFER TO MATERIALS SCHEDULE
	PAVING TYPE 12 - Playground Mulch REFER TO MATERIALS SCHEDULE
	PAVING TYPE 15 - Ecothex Paving REFER TO MATERIALS SCHEDULE
	WALL TYPE 1 - Insitu Concrete (200mm wide) REFER TO MATERIALS SCHEDULE
	WALL TYPE 2a - Insitu Concrete Hob [150/200mm wide] REFER TO MATERIALS SCHEDULE
	WALL TYPE 3 - Insitu Concrete (400mm wide) REFER TO MATERIALS SCHEDULE
	WALL TYPE 4 - Insitu Concrete (600mm wide) REFER TO MATERIALS SCHEDULE
	WALL TYPE 5 - Precast Concrete [600mm wide] REFER TO MATERIALS SCHEDULE
	WALL TYPE 6 - Sandstone Stepping Wall REFER TO MATERIALS SCHEDULE
	WALL TYPE 7 - Sandstone Sealing [300mm wide] REFER TO MATERIALS SCHEDULE
	WALL TYPE 8 - Concrete Block (200mm wide) REFER TO MATERIALS SCHEDULE
	STAIR TYPE 1 - Insitu Concrete (300mm wide) REFER TO MATERIALS SCHEDULE
	STAIR TYPE 2 - Insitu Concrete Bleacher [600mm wide] REFER TO MATERIALS SCHEDULE
	STAIR TYPE 3 - Insitu Concrete Intermediate Stair [300mm wide] REFER TO MATERIALS SCHEDULE
	EDGE TYPE 1 - Steel Edge [On Grade] REFER TO MATERIALS SCHEDULE
	EDGE TYPE 2 - Steel Edge [On Slab] REFER TO MATERIALS SCHEDULE
	FURNITURE TYPES (FX1-FX14) REFER TO MATERIALS SCHEDULE
	FURNITURE TYPE FX3a/b - Bollard [Fixed/Removable] REFER TO MATERIALS SCHEDULE
	FURNITURE TYPE FX15a/b - Bollard [Fixed/Removable] REFER TO MATERIALS SCHEDULE
	FURNITURE TYPE FX15b - Existing bollard
	FURNITURE TYPE (BU) - Bubbler REFER TO ARCHITECTURE DRAWINGS
	HANDRAIL TYPE 1 - Top Mount REFER TO MATERIALS SCHEDULE
	HANDRAIL TYPE 2 - Wall Mount REFER TO MATERIALS SCHEDULE
	HANDRAIL TYPE 3 - Balustrade Mount REFER TO MATERIALS SCHEDULE
	BALUSTRADE TYPE 1 - Top Mount REFER TO MATERIALS SCHEDULE
	BALUSTRADE TYPE 2 - Top Mount on Wall REFER TO MATERIALS SCHEDULE
	BALUSTRADE TYPE 3 - Top Mount - 1200mm High REFER TO MATERIALS SCHEDULE
	BALUSTRADE TYPE 3a - Side Fixed - 1200mm High REFER TO MATERIALS SCHEDULE
	FENCE TYPE 1 - Diplomat Fence 2.1m High REFER ARCHITECTURAL DETAILS
	FENCE TYPE 2 - Existing Corten Fence 2.1m High
	FENCE TYPE 3 - Chain Link Fence 1.2m High REFER ARCHITECTURAL DETAILS
	FENCE TYPE 4 - Bastille Fence 2.1m High REFER FENCING & GATE PLAN L.CC.1003
	FENCE TYPE 5 - FIFA Netting 7.0m High REFER ARCHITECTURAL DETAILS
	KERB TYPE 1 - New Concrete Kerb REFER ENGINEER'S DETAILS
	KERB TYPE 2 - Wheel Stop REFER ENGINEER'S DETAILS
	KERB TYPE 3 - Existing Stone Kerb Retained
	KERB TYPE 4 - Existing Stone Kerb Reused REFER ENGINEER'S DETAILS
	KERB TYPE 4 - Existing Concrete Kerb Retained
	GUTTER TYPE 1 - New Concrete Gutter REFER TO ENGINEER'S DETAIL
	GUTTER TYPE 2 - Existing Concrete Gutter Retained REFER TO ENGINEER'S DETAIL
	PROPOSED SERVICES REFER ENGINEERS DOCUMENTATION



<div>NOTE: VERIFY ALL DIMENSIONS ON SITE BEFORE COMMENCING WORK. REPORT ALL DISCREPANCIES TO LANDSCAPE ARCHITECT PRIOR TO CONSTRUCTION. FIGURED DIMENSIONS TO BE TAKEN IN PREFERENCE TO SCALED DRAWINGS. DRAWINGS MADE TO LARGER SCALES AND THOSE SHOWING PARTICULAR PARTS OF THE WORKS SHALL TAKE PRECEDENCE OVER DRAWINGS MADE TO SMALLER SCALE AND THOSE FOR GENERAL PURPOSES. ALL WORK IS TO CONFORM TO RELEVANT AUSTRALIAN STANDARDS AND OTHER CODES AS APPLICABLE, TOGETHER WITH OTHER AUTHORITIES' REQUIREMENTS AND REGULATIONS. DESIGN DRAWINGS BY OTHER DISCIPLINES HAVE BEEN INCLUDED FOR COORDINATION ONLY. THIS DRAWING AND DESIGN IS SUBJECT TO COPYRIGHT AND MAY NOT BE REPRODUCED WITHOUT PRIOR WRITTEN CONSENT. IF IN DOUBT, ASK.</div> <div>NOT FOR CONSTRUCTION</div>	<div><div>ISSUE</div><div>DESCRIPTION</div><div>BY</div><div>APPD</div><div>DATE</div></div> <div><div>A</div><div>ISSUE FOR COS REVIEW</div><div>JK</div><div>JK</div><div>12/12/2019</div></div> <div><div>B</div><div>ISSUE TO CITY OF SYDNEY COUNCIL</div><div>MF</div><div>JK</div><div>26/02/2020</div></div> <div><div>C</div><div>ISSUE FOR SSDA MODIFICATION</div><div>MF</div><div>JK</div><div>17/06/2020</div></div> <div><div></div><div></div><div></div><div></div><div></div><div></div><div></div><div></div><div></div><div></div><div></div><div></div></div>	<div><div>NORTH / SCALE</div><div>Scale: 1:200</div><div></div></div>	<div><div>PROJECT TEAM</div><div>PROJECT MANAGER</div><div>SAVILLS AUSTRALIA</div><div>Level 25, Governor Phillip Tower, 1 Farrer Place, Sydney NSW 2000</div><div>Telephone: (02) 8215 8888</div><div>CIVIL ENGINEER</div><div>SCP CONSULTING PTY LTD</div><div>2/507 Kent St, Sydney NSW 2000</div><div>Telephone: (02) 9267 9312</div></div>	<div><div>BUILDER</div><div>RICHARD CROOKES CONSTRUCTIONS</div><div>Suite 501, Level 5/1 McLaren St, North Sydney NSW 2060</div><div>Telephone: (02) 9902 4700</div></div>	<div><div>ARCHITECT</div><div>TANNER KIBBLE DENTON ARCHITECTS</div><div>19 Foster St, Surry Hills NSW 2010</div><div>Telephone: (02) 9281 4399</div></div>	<div><div>LANDSCAPE ARCHITECT</div><div>context</div><div>Context Landscape Design Pty Ltd</div><div>Level 2, 52-58 William Street, East Sydney NSW 2011</div><div>PO Box A866 Sydney South NSW 1235</div><div>T: 61 2 8244 8900 F: 61 2 82448988</div><div>E: context@context.net.au W: www.context.net.au</div><div>ABN: 14 093 350 719</div></div>	<div><div>CLIENT NAME</div><div>DEPARTMENT OF EDUCATION</div><div>PROJECT</div><div>ALEXANDRIA PARK COMMUNITY SCHOOL</div><div>PARK ROAD ALEXANDRIA 2015</div></div>	<div><div>DRAWING TITLE</div><div>FINISHES & LEVELS PLAN 4a OF 8</div><div><div>PROJECT STAGE</div><div>ISSUE FOR CONSTRUCTION</div><div>SHEET SIZE</div><div>ISO A3</div></div><div><div>PROJECT NUMBER</div><div>19522</div><div>DRAWING NUMBER</div><div>L.COS.9004a</div><div>ISSUE</div><div>C</div></div></div>
---	--	---	---	--	--	---	--	---



KEY PLAN

-
- A floor plan of a building with rooms numbered 01 through 10. Room 04 is highlighted with a red box and labeled '04a'.

PROJECT STAGE	SHEET
ISSUE FOR CONSTRUCTION	ISO
PROJECT NUMBER	DRAWING NUMBER
19522	L.COS.9004a C

	SITE / PROPERTY BOUNDARY
	EXTENTS OF WORK BOUNDARY
	PUBLIC DOMAIN WORKS BOUNDARY
	EXISTING TREE TO BE REMOVED
	EXISTING TREE TO BE RETAINED TPZ SHOWN
	PROPOSED TREE
	PROPOSED FINISHED GROUND LEVEL
	PROPOSED TOP OF WALL LEVEL
	MASSSED PLANTING TYPE (M1-LMP7)
	PAVING TYPE 1 - Concrete (Broom Finish) REFER TO MATERIALS SCHEDULE
	PAVING TYPE 2 - Concrete [Special] REFER TO MATERIALS SCHEDULE
	PAVING TYPE 2a - Concrete [Exposed Aggregate] REFER TO MATERIALS SCHEDULE
	PAVING TYPE 3a - Pave/Pave REFER TO MATERIALS SCHEDULE
	PAVING TYPE 4 - FRP Mesh REFER TO CIVIL DOCUMENTATION
	PAVING TYPE 5 - Synthetic Turf (23mm) REFER TO MATERIALS SCHEDULE
	PAVING TYPE 6 - Pave/Pave REFER TO MATERIALS SCHEDULE
	PAVING TYPE 7a/b/c - Softfall REFER TO MATERIALS SCHEDULE
	PAVING TYPE 8 - Timber Decking REFER TO MATERIALS SCHEDULE
	PAVING TYPE 9 - Concrete Sleepers [Panel] REFER TO MATERIALS SCHEDULE
	PAVING TYPE 10 - Asphalt REFER TO ENGINEERS DETAILS
	PAVING TYPE 11 - Synthetic Turf (FIFA Grade) REFER TO MATERIALS SCHEDULE
	PAVING TYPE 12 - Playground Mulch REFER TO MATERIALS SCHEDULE
	PAVING TYPE 15 - Ecobrixx Paving REFER TO MATERIALS SCHEDULE
	WALL TYPE 1 - In-situ Concrete [200mm wide] REFER TO MATERIALS SCHEDULE
	WALL TYPE 2/a - In-situ Concrete Hob [150/200mm wide] REFER TO MATERIALS SCHEDULE
	WALL TYPE 3 - In-situ Concrete [400mm wide] REFER TO MATERIALS SCHEDULE
	WALL TYPE 4 - In-situ Concrete [600mm wide] REFER TO MATERIALS SCHEDULE
	WALL TYPE 5 - Precast Concrete [600mm wide] REFER TO MATERIALS SCHEDULE
	WALL TYPE 6 - Sandstone Stepping Wall REFER TO MATERIALS SCHEDULE
	WALL TYPE 7 - Sandstone Seating [300mm wide] REFER TO MATERIALS SCHEDULE
	WALL TYPE 8 - Concrete Block [200mm wide] REFER TO MATERIALS SCHEDULE
	WALL TYPE 9 - Concrete Block [200mm wide] REFER TO MATERIALS SCHEDULE
	STAIR TYPE 1 - In-situ Concrete [300mm wide] REFER TO MATERIALS SCHEDULE
	STAIR TYPE 2 - In-situ Concrete Bleacher [800mm wide] REFER TO MATERIALS SCHEDULE
	STAIR TYPE 3 - In-situ Concrete Intermediate Stair [300mm wide] REFER TO MATERIALS SCHEDULE
	EDGE TYPE 1 - Steel Edge [On Grade] REFER TO MATERIALS SCHEDULE
	EDGE TYPE 2 - Steel Edge [On Slope] REFER TO MATERIALS SCHEDULE
	FURNITURE TYPES (FX1-FX14) REFER TO MATERIALS SCHEDULE
	FURNITURE TYPE FX1a/b - Bench [Fixed/Removable] REFER TO MATERIALS SCHEDULE
	FURNITURE TYPE FX15a/b - Bollard [Fixed/Removable] REFER TO MATERIALS SCHEDULE
	FURNITURE TYPE FX15a - Existing bollard
	FURNITURE TYPE [BU] - Bubble REFER TO ARCHITECTURE DRAWINGS
	HANDRAIL TYPE 1 - Top Mount REFER TO MATERIALS SCHEDULE
	HANDRAIL TYPE 2 - Wall Mount REFER TO MATERIALS SCHEDULE
	HANDRAIL TYPE 3 - Balustrade Mount REFER TO MATERIALS SCHEDULE
	BALUSTRADE TYPE 1 - Top Mount REFER TO MATERIALS SCHEDULE
	BALUSTRADE TYPE 2 - Top Mount on Wall REFER TO MATERIALS SCHEDULE
	BALUSTRADE TYPE 3 - Top Mount 1200mm High REFER TO MATERIALS SCHEDULE
	BALUSTRADE TYPE 3a - Side Fixed - 1200mm High REFER TO MATERIALS SCHEDULE
	FENCE TYPE 1 - Optional - 2.1m High REFER ARCHITECTURAL DETAILS
	FENCE TYPE 2 - Existing Corten Fence 2.1m High
	FENCE TYPE 3 - Chain Link Fence 1.2m High REFER ARCHITECTURAL DETAILS
	FENCE TYPE 4 - Battile Fence 2.1m High REFER FENCING & GATE PLAN L.CC. 1003
	FENCE TYPE 5 - F&A Netting 7.0m High REFER ARCHITECTURAL DETAILS
	KERB TYPE 1 - New Concrete Kerb REFER ENGINEERS DETAILS
	KERB TYPE 2 - Wheel Stop REFER ENGINEERS DETAILS
	KERB TYPE 3 - Existing Stone Kerb Retained
	KERB TYPE 4 - Existing Stone Kerb Reused REFER ENGINEERS DETAILS
	KERB TYPE 4 - Existing Concrete Kerb Retained
	GUTTER TYPE 1 - New Concrete Gutter REFER TO ENGINEERS DETAILS
	GUTTER TYPE 2 - Existing Concrete Gutter Retained REFER TO ENGINEERS DETAILS
	PROPOSED SERVICES REFER ENGINEERS DOCUMENTATION

NOT FOR
CONSTRUCTION

[illegible]

APCS_CC_GF.vwx

ARCHITECT
TANNER KIBBLE DENTON ARCHITECTS
19 Foster St, Surry Hills NSW 2010
Telephone: (02) 9281 4399

Context Landscape Design Pty Ltd
Level 2, 52-58 William Street, East Sydney NSW 2011
PO Box A866 Sydney South NSW 1235
T. 61 2 8244 8900 F. 61 2 8244 8988
E. context@context.net.au W. www.context.net.au
ABN: 14 093 350 719

PROJECT
ALEXANDRIA PARK COMMUNITY SCHOOL
PARK ROAD ALEXANDRIA 2015

PROJECT STAGE ISSUE FOR CONSTRUCTION		SHEET SIZE ISO A3
PROJECT NUMBER 19522	DRAWING NUMBER L.COS.9004	ISSUE C

A 10x10 grid of numbers from 01 to 10, with a red box highlighting the number 05.

PROJECT STAGE		SHEET SIZE
ISSUE FOR CONSTRUCTION		ISO A3
PROJECT NUMBER	DRAWING NUMBER	ISSUE
19522	L.COS.9005	C

NOTE: VERIFY ALL DIMENSIONS ON SITE BEFORE COMMENCING WORK. REPORT ALL DISCREPANCIES TO LANDSCAPE ARCHITECT PRIOR TO CONSTRUCTION. FIGURED DIMENSIONS TO BE TAKEN IN PREFERENCE TO SCALED DRAWINGS. DRAWINGS MADE TO LARGER SCALES, THAN THOSE SHOWING PARTICULAR PARTS OF THE WORKS SHALL TAKE PRECEDENCE OVER DRAWINGS MADE TO SMALLER SCALE AND THOSE FOR GENERAL PURPOSE. ALL WORK TO BE CONFORM TO ALL RELEVANT AUSTRALIAN STANDARDS AND OTHER CODES AS APPLICABLE. TOGETHER WITH OTHER AUTHORITIES' REQUIREMENTS AND RELATING DESIGN CONDITIONS. ANY DISCREPANCIES HAVE BEEN NOTICED BY COORDINATION ONLY. THIS DRAWING AND DESIGN IS SUBJECT TO COPYRIGHT AND MAY NOT BE REPRODUCED WITHOUT PRIOR WRITTEN CONSENT. IF IN DOUBT, ASK.

[illegible]

CIVIL ENGINEER
SCP CONSULTING PTY LTD
2/507 Kent St, Sydney NSW 2000
Telephone (02) 9267 9312

APCS_CC_GF.vw

context

Context Landscape Design Pty Ltd
Level 2, 52-58 William Street, East Sydney NSW 2011
PO Box A866 Sydney South NSW 1235
T. 61 2 8244 8900 F. 61 2 8244 8988
E. context@context.net.au W. www.context.net.au
ABN: 14 093 350 719

PROJECT
ALEXANDRIA PARK COMMUNITY SCHOOL
PARK ROAD ALEXANDRIA 2015

	SITE / PROPERTY BOUNDARY
	EXTENTS OF WORK BOUNDARY
	PUBLIC DOMAIN WORKS BOUNDARY
	EXISTING TREE TO BE REMOVED
	EXISTING TREE TO BE RETAINED TPZ SHOWN
	PROPOSED TREE
	PROPOSED FINISHED GROUND LEVEL
	PROPOSED TOP OF WALL LEVEL
	MASSSED PLANTING
	PAVING TYPE 1 - Concrete [Broom Finish] REFER TO MATERIALS SCHEDULE
	PAVING TYPE 2 - Concrete [Special] REFER TO MATERIALS SCHEDULE
	PAVING TYPE 2a - Concrete [Exposed Aggregate] REFER TO MATERIALS SCHEDULE
	PAVING TYPE 3a+b - PexiPave REFER TO MATERIALS SCHEDULE
	PAVING TYPE 4 - FRP Mesh REFER TO CIVIL DOCUMENTATION
	PAVING TYPE 5 - Synthetic Turf [23mm] REFER TO MATERIALS SCHEDULE
	PAVING TYPE 6 - PlexiPave REFER TO MATERIALS SCHEDULE
	PAVING TYPE 7a+b+c - Softfall REFER TO MATERIALS SCHEDULE
	PAVING TYPE 8 - Timber Decking REFER TO MATERIALS SCHEDULE
	PAVING TYPE 9 - Concrete Sleepers [Panel] REFER TO MATERIALS SCHEDULE
	PAVING TYPE 10 - Asphalt REFER TO ENGINEERS DETAILS
	PAVING TYPE 11 - Synthetic Turf [FIFA Grade] REFER TO MATERIALS SCHEDULE
	PAVING TYPE 12 - Playground Mulch REFER TO MATERIALS SCHEDULE
	PAVING TYPE 15 - Ecoteflex Paving REFER TO MATERIALS SCHEDULE
	WALL TYPE 1 - Insitu Concrete [200mm wide] REFER TO MATERIALS SCHEDULE
	WALL TYPE 2a - Insitu Concrete Hob [150/200mm wide] REFER TO MATERIALS SCHEDULE
	WALL TYPE 3 - Insitu Concrete [400mm wide] REFER TO MATERIALS SCHEDULE
	WALL TYPE 4 - Insitu Concrete [600mm wide] REFER TO MATERIALS SCHEDULE
	WALL TYPE 5 - Precast Concrete [600mm wide] REFER TO MATERIALS SCHEDULE
	WALL TYPE 6 - Sandstone Stepping Wall REFER TO MATERIALS SCHEDULE
	WALL TYPE 7 - Sandstone Sealing [300mm wide] REFER TO MATERIALS SCHEDULE
	WALL TYPE 8 - Concrete Block [200mm wide] REFER TO MATERIALS SCHEDULE
	STAIR TYPE 1 - Insitu Concrete [300mm wide] REFER TO MATERIALS SCHEDULE
	STAIR TYPE 2 - Insitu Concrete Bleacher [600mm wide] REFER TO MATERIALS SCHEDULE
	STAIR TYPE 3 - Insitu Concrete Intermediate Stair [300mm wide] REFER TO MATERIALS SCHEDULE
	EDGE TYPE 1 - Steel Edge [On Grade] REFER TO MATERIALS SCHEDULE
	EDGE TYPE 2 - Steel Edge [On Slab] REFER TO MATERIALS SCHEDULE
	FURNITURE TYPES FX1-FX14 REFER TO MATERIALS SCHEDULE
	FURNITURE TYPE FX9a+b - Bollard [Fixed/Removable] REFER TO MATERIALS SCHEDULE
	FURNITURE TYPE FX15a+b - Bollard [Fixed/Removable] REFER TO MATERIALS SCHEDULE
	FURNITURE TYPE FX15b - Existing bollard
	FURNITURE TYPE [BU] - Bubbler REFER TO ARCHITECTURE DRAWINGS
	HANDRAIL TYPE 1 - Top Mount REFER TO MATERIALS SCHEDULE
	HANDRAIL TYPE 2 - Wall Mount REFER TO MATERIALS SCHEDULE
	HANDRAIL TYPE 3 - Balustrade Mount REFER TO MATERIALS SCHEDULE
	BALUSTRADE TYPE 1 - Top Mount REFER TO MATERIALS SCHEDULE
	BALUSTRADE TYPE 2 - Top Mount on Wall REFER TO MATERIALS SCHEDULE
	BALUSTRADE TYPE 3 - Top Mount - 1200mm High REFER TO MATERIALS SCHEDULE
	BALUSTRADE TYPE 3a - Side Fixed - 1200mm High REFER TO MATERIALS SCHEDULE
	FENCE TYPE 1 - Diplomat Fence 2.1m High REFER ARCHITECTURAL DETAILS
	FENCE TYPE 2 - Existing Corten Fence 2.1m High
	FENCE TYPE 3 - Chain Link Fence 1.2m High REFER ARCHITECTURAL DETAILS
	FENCE TYPE 4 - Bastille Fence 2.1m High REFER FENCING & GATE PLAN L.C.C. 1003
	FENCE TYPE 5 - FIFA Netting 7.0m High REFER ARCHITECTURAL DETAILS
	KERB TYPE 1 - New Concrete REFER ENGINEERS DETAILS
	KERB TYPE 2 - Wheel Stop REFER ENGINEERS DETAILS
	KERB TYPE 3 - Existing Stone Kerb Retained
	KERB TYPE 4 - Existing Stone Kerb Reused REFER ENGINEERS DETAILS
	KERB TYPE 4 - Existing Concrete Kerb Retained
	GUTTER TYPE 1 - New Concrete Gutter REFER TO ENGINEERS DETAILS
	GUTTER TYPE 2 - Existing Concrete Gutter Retained REFER TO ENGINEERS DETAIL
	PROPOSED SERVICES REFER ENGINEERS DOCUMENTATION

NOT FOR
CONSTRUCTION

ISSUE	DESCRIPTION	BY	APPRO	DATE
A	ISSUE FOR COS REVIEW	JK	JK	12/12/2019
B	ISSUE TO CITY OF SYDNEY COUNCIL	MF	JK	28/02/2020
C	ISSUE FOR ISSDA MODIFICATION	MF	JK	17/06/2020
D				
E				
F				
G				
H				
I				
J				
K				
L				
M				
N				
O				
P				
Q				
R				
S				
T				
U				
V				
W				
X				
Y				
Z				

PROJECT MANAGER
SAVILLS AUSTRALIA
Level 25, Governor Phillip Tower, 1 Farrer Place, Sydney NSW 2000
Telephone: (02) 6215 8888

CIVIL ENGINEER
SCP CONSULTING PTY LTD
2/507 Kent St, Sydney NSW 2000
Telephone (02) 9267 9312

BUILDER
RICHARD CROOKES CONSTRUCTIONS
Suite 501, Level 5/41 McLaren St, North Sydney NSW 2060
Telephone: (02) 9902 4700

ARCHITECT
TANNER KIBBLE DENTON ARCHITECTS
19 Foster St, Surry Hills NSW 2010
Telephone: (02) 9281 4399

context

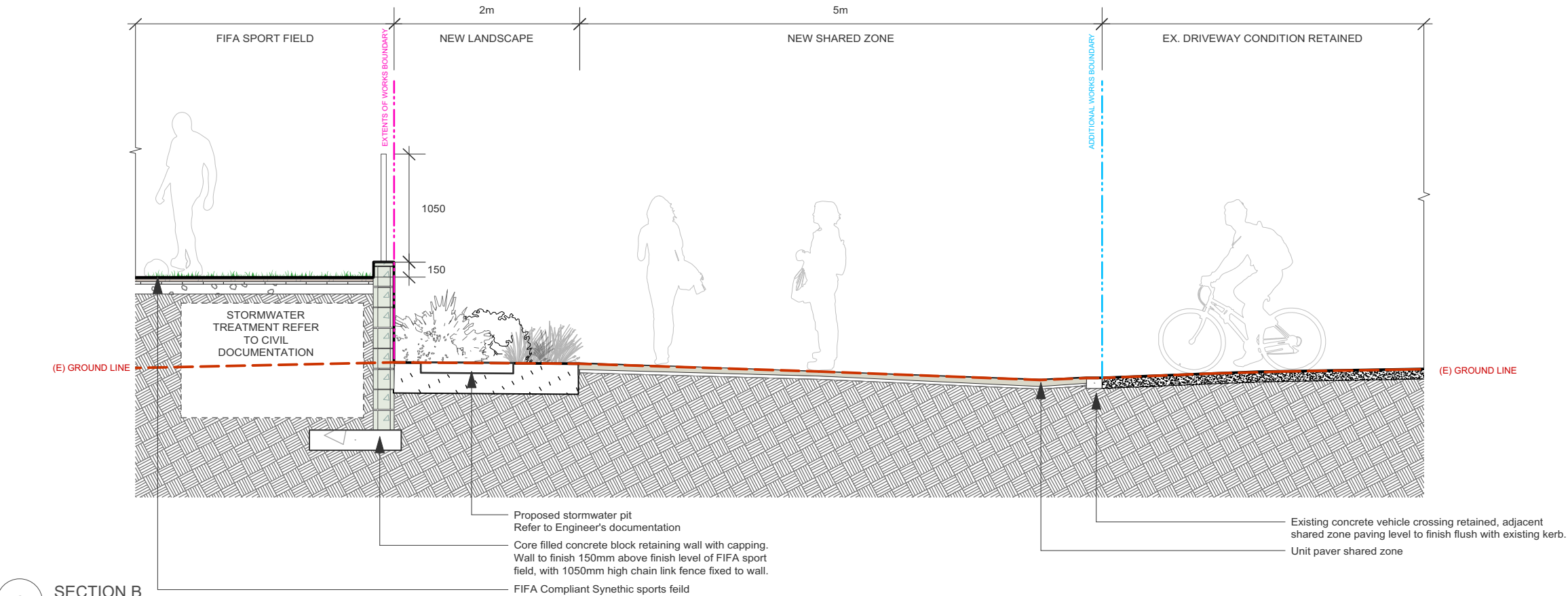
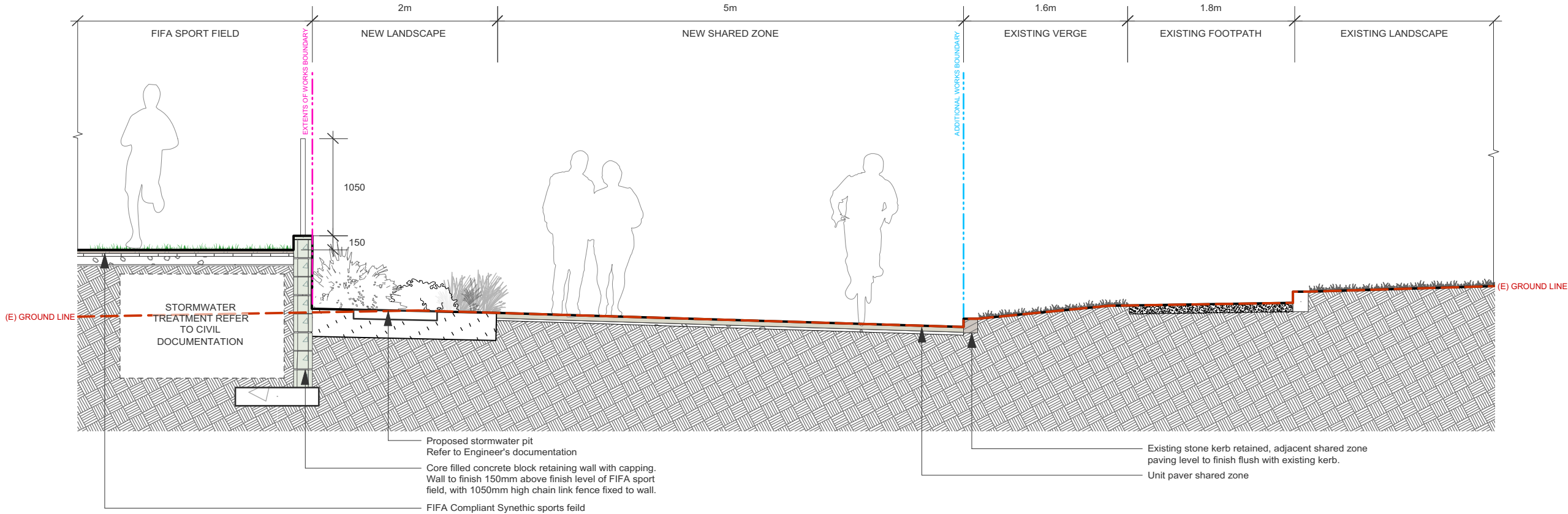
Context Landscape Design Pty Ltd
Level 2, 52-58 William Street, East Sydney NSW 2011
PO Box A866 Sydney South NSW 1235
T. 61 2 8244 8900 F. 61 2 82448988
E. context@context.net.au W. www.context.net.au
ABN: 14 093 350 719

DEPARTMENT OF EDUCATION

PROJECT
ALEXANDRIA PARK COMMUNITY SCHOOL
PARK ROAD ALEXANDRIA 2015

FINISHES & LEVELS PLAN 6 OF 8

PROJECT STAGE		SHEET SIZE
ISSUE FOR CONSTRUCTION		ISO A3
PROJECT NUMBER	DRAWING NUMBER	ISSUE
19522	L.COS.9006	C



NOTE: VERIFY ALL DIMENSIONS ON SITE BEFORE COMMENCING WORK. REPORT ALL DISCREPANCIES TO LANDSCAPE ARCHITECT PRIOR TO CONSTRUCTION. FIGURED DIMENSIONS TO BE TAKEN IN PREFERENCE TO SCALED DRAWINGS. DRAWINGS MADE TO LARGER SCALES AND THOSE SHOWING PARTICULAR PARTS OF THE WORKS SHALL TAKE PRECEDENCE OVER DRAWINGS MADE TO SMALLER SCALE AND THOSE FOR GENERAL PURPOSES. ALL WORK IS TO CONFORM TO RELEVANT AUSTRALIAN STANDARDS AND OTHER CODES AS APPLICABLE. TOGETHER WITH OTHER AUTHORITIES' REQUIREMENTS AND REGULATIONS. DESIGN DRAWINGS BY OTHER DISCIPLINES HAVE BEEN INCLUDED FOR COORDINATION ONLY. THIS DRAWING AND DESIGN IS SUBJECT TO COPYRIGHT AND MAY NOT BE REPRODUCED WITHOUT PRIOR WRITTEN CONSENT. IF IN DOUBT, ASK.

NOT FOR CONSTRUCTION

ISSUE	DESCRIPTION	BY	APPD	DATE
A	ISSUE FOR COS REVIEW	JK	JK	12/12/2019
B	ISSUE TO CITY OF SYDNEY COUNCIL	MF	JK	26/02/2020
C	ISSUE FOR SSDA MODIFICATION	ME	JK	12/06/2020

NORTH / SCALE
Scale: AS SHOWN

PROJECT TEAM
PROJECT MANAGER SAVILLS AUSTRALIA Level 25, Governor Phillip Tower, 1 Farrer Place, Sydney NSW 2000 Telephone: (02) 8215 8888
BUILDER RICHARD CROOKES CONSTRUCTIONS Suite 501, Level 5/61 McLaren St, North Sydney NSW 2060 Telephone: (02) 9902 4700
ARCHITECT TANNER KIBBLE DENTON ARCHITECTS 19 Foster St, Surry Hills NSW 2010 Telephone: (02) 9281 4399
CIVIL ENGINEER SCP CONSULTING PTY LTD 2/507 Kent St, Sydney NSW 2000 Telephone: (02) 9287 9312

APCS_CC_GF.wvx

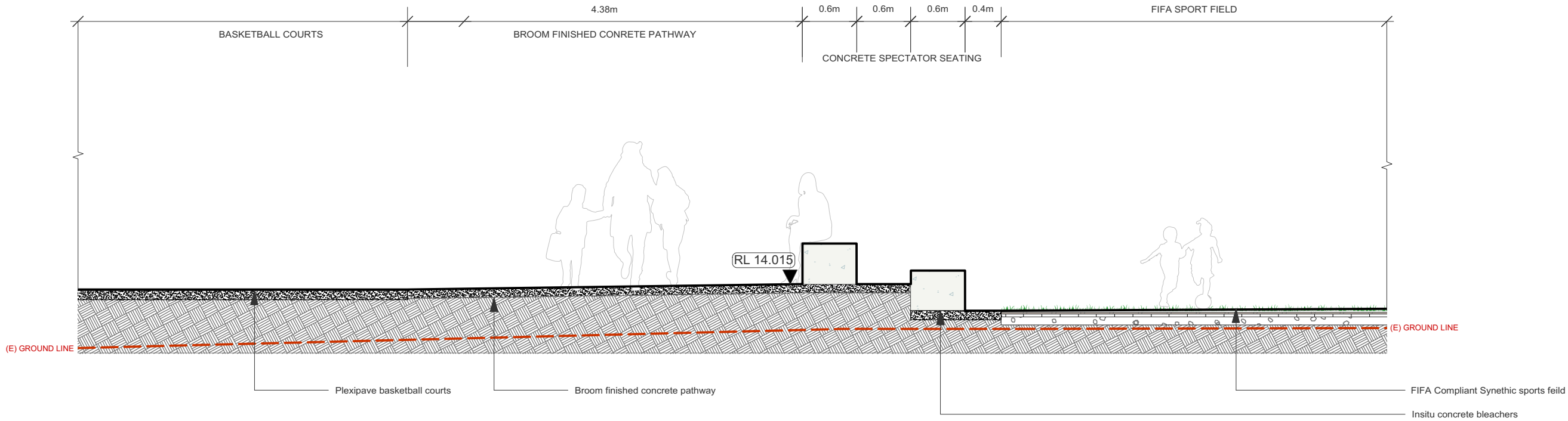
LANDSCAPE ARCHITECT

context

Context Landscape Design Pty Ltd
Level 2, 52-58 William Street, East Sydney NSW 2011
PO Box A869 Sydney South NSW 1235
T: 61 2 8244 8900 F: 61 2 8244 8988
E: context@context.net.au W: www.context.net.au
ABN: 14 093 350 719

CLIENT NAME DEPARTMENT OF EDUCATION
PROJECT ALEXANDRIA PARK COMMUNITY SCHOOL
PARK ROAD ALEXANDRIA 2015

DRAWING TITLE SECTION
PROJECT STAGE ISSUE FOR CONSTRUCTION
SHEET SIZE ISO A3
PROJECT NUMBER 19522
DRAWING NUMBER L.COS.9100
ISSUE C



1 SECTION E
Scale: 1:50

NOTE: VERIFY ALL DIMENSIONS ON SITE BEFORE COMMENCING WORK. REPORT ALL DISCREPANCIES TO LANDSCAPE ARCHITECT PRIOR TO CONSTRUCTION. FIGURED DIMENSIONS TO BE TAKEN IN PREFERENCE TO SCALED DRAWINGS. DRAWINGS MADE TO LARGER SCALES AND THOSE SHOWING PARTICULAR PARTS OF THE WORK SHALL TAKE PRECEDENCE OVER DRAWINGS MADE TO SMALLER SCALE AND THOSE FOR GENERAL PURPOSES. ALL WORK IS TO CONFORM TO RELEVANT AUSTRALIAN STANDARDS AND OTHER CODES AS APPLICABLE. TOGETHER WITH OTHER AUTHORITIES' REQUIREMENTS AND REGULATIONS. DESIGN DRAWINGS BY OTHER DISCIPLINES HAVE BEEN INCLUDED FOR COORDINATION ONLY. THIS DRAWING AND DESIGN IS SUBJECT TO COPYRIGHT AND MAY NOT BE REPRODUCED WITHOUT PRIOR WRITTEN CONSENT. IF IN DOUBT, ASK.

NOT FOR CONSTRUCTION

ISSUE	DESCRIPTION	BY	APPD	DATE
A	ISSUE FOR COS REVIEW	JK	JK	12/12/2019
B	ISSUE TO CITY OF SYDNEY COUNCIL	MF	JK	26/02/2020
C	ISSUE FOR SSDA MODIFICATION	MF	JK	17/06/2020

NORTH / SCALE
Scale: AS SHOWN

PROJECT TEAM

PROJECT MANAGER
SAVILLS AUSTRALIA
Level 25, Governor Phillip Tower, 1 Farrer Place, Sydney NSW 2000
Telephone: (02) 8215 8888

CIVIL ENGINEER
SCP CONSULTING PTY LTD
2/507 Kent St, Sydney NSW 2000
Telephone: (02) 9267 9312

BUILDER
RICHARD CROOKES CONSTRUCTIONS
Suite 501, Level 5/61 McLaren St, North Sydney NSW 2060
Telephone: (02) 9902 4700

ARCHITECT
TANNER KIBBLE DENTON ARCHITECTS
19 Foster St, Surry Hills NSW 2010
Telephone: (02) 9281 4399

LANDSCAPE ARCHITECT

context

Context Landscape Design Pty Ltd
Level 2, 52-58 William Street, East Sydney NSW 2011
PO Box A866 Sydney South NSW 1235
T: 61 2 8244 8900 F: 61 2 8244 8988
E: context@context.net.au W: www.context.net.au
ABN: 14 093 350 719

CLIENT NAME

DEPARTMENT OF EDUCATION

PROJECT

ALEXANDRIA PARK COMMUNITY SCHOOL

PARK ROAD ALEXANDRIA 2015

DRAWING TITLE

SECTION

PROJECT STAGE
ISSUE FOR CONSTRUCTION

PROJECT NUMBER
19522

SHEET SIZE
ISO A3

DRAWING NUMBER
L.COS.9102

ISSUE
C