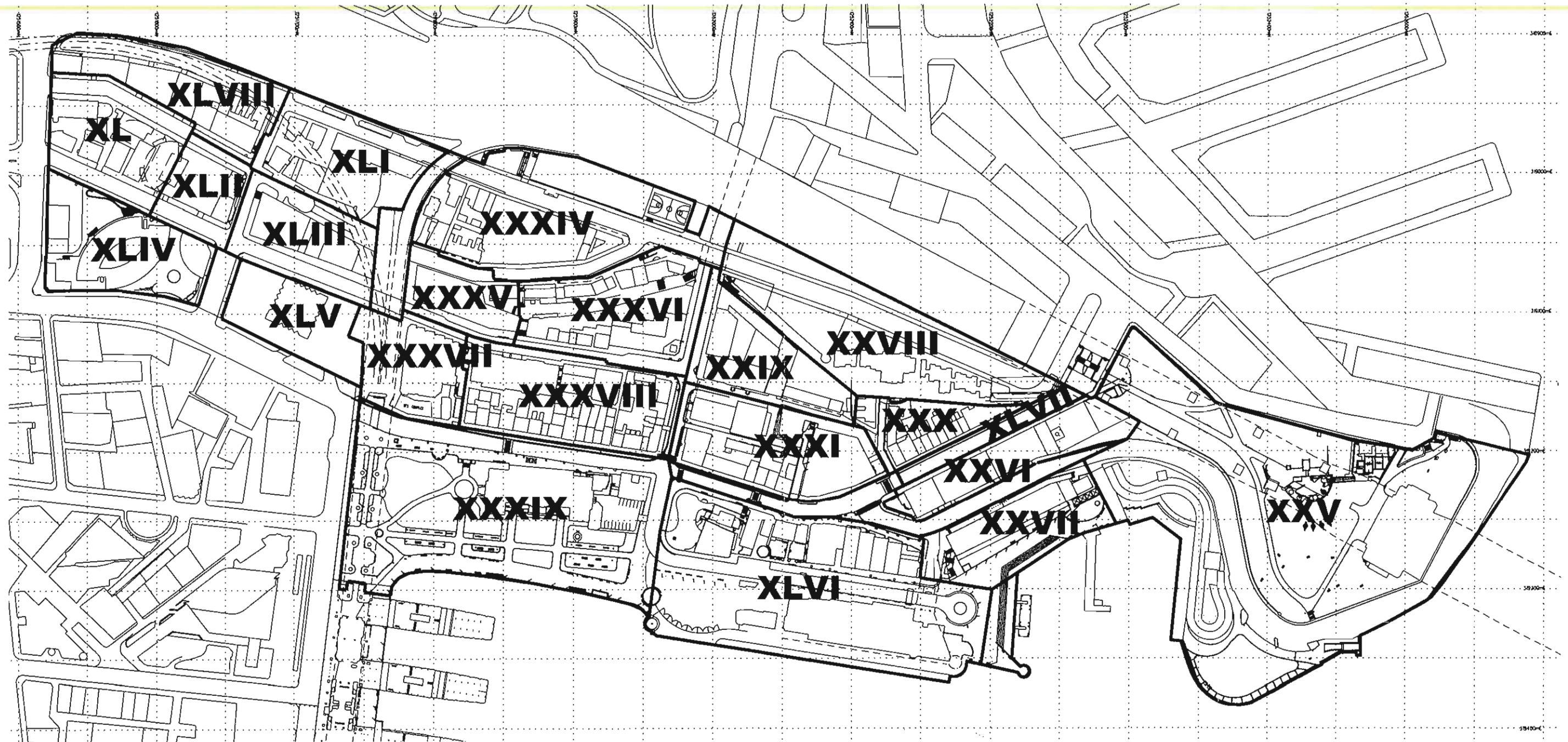
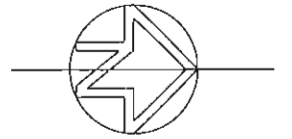


## EXPLANATORY NOTES ON PERMITTED USES

1. "COMMERCIAL" USES ARE DEEMED TO INCLUDE SUCH ACTIVITIES AS OFFICES, AND THEIR ASSOCIATED FACILITIES, CARETAKERS ACCOMMODATION, WHOLESALE AND RETAIL OUTLETS, PREMISES LICENSED UNDER THE LIQUOR ACT 1982, RESTAURANTS AND OTHER FOOD OUTLETS, THE PARKING OF VEHICLES FOR A FEE, CLUB ROOMS, PORTRAIT PAINTING AND PHOTOGRAPHS, PRINTING SERVICES AND THE LIKE.
2. "RESIDENTIAL" USES ARE DEEMED TO INCLUDE SERVICED APARTMENTS, HOTELS AND MOTEL SUITES, ANCILLARY AMENITIES AND CAR PARKING FACILITIES
3. "SPECIAL" USES ARE DEEMED TO INCLUDE UTILITY SERVICES, SUBSTATIONS, PUBLIC OPEN SPACE AND OTHER AMENITIES, OPEN SPACE, HEALTH AND CHILD-MINDING FACILITIES, TOURIST AND OTHER INFORMATION SERVICES, HANDICRAFT AND OTHER CLEAN COTTAGE INDUSTRIES, CEREMONIAL PLACES, EXHIBITION AREAS, MUSEUMS, THEATRES, SCHOOL PURPOSES, INSTRUCTION IN THE ARTS AND CRAFTS, PLACES OF WORSHIP, RELIGIOUS INSTITUTIONS AND ASSOCIATED RESIDENTIAL, AMBULANCE SERVICES, WHARVES, RAIL WORKS, SERVICE STATIONS, POLICE STATIONS, MINOR FACTORY TYPE OPERATIONS (PROVIDED THEY ARE NON-POLLUTING AND NON-OBNOXIOUS IN NATURE), AREAS SET ASIDE FOR ENTERTAINMENT, AND RECREATIONAL FACILITIES AND THE LIKE

THE AUTHORITY RESERVES THE RIGHT AT ANY TIME TO MAKE APPLICATION UNDER SECTION 17 OF THE SYDNEY COVE REDEVELOPMENT AUTHORITY ACT 1968 TO LIMIT THE PERMITTED USES ON INDIVIDUAL SITES OR PARTS THEREOF TO A RANGE OF MORE SPECIFICALLY DEFINED USES.

SMALL PROJECTIONS SUCH AS FLAGPOLES MAY BE APPROVED TO PROJECT ABOVE BUILDING ENVELOPES.



I, Frank Sartor, Minister for Planning being the Minister administering the Environmental Planning and Assessment (Sydney Cove) Savings and Transitional Regulation 1999, pursuant to clause 9 of that Regulation, hereby approve the variation to the approved scheme evidenced by this control drawing.

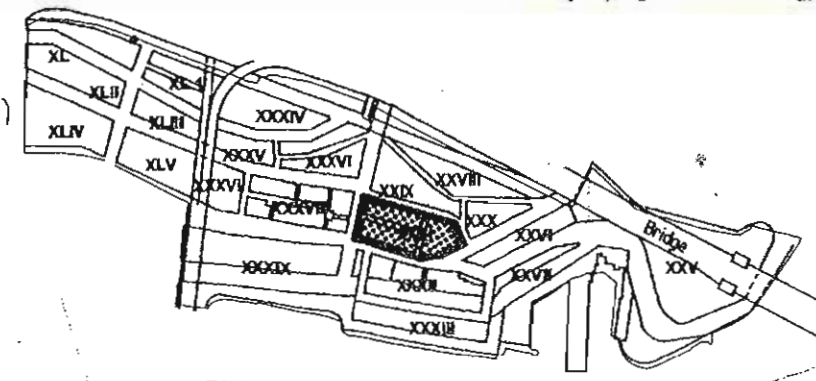
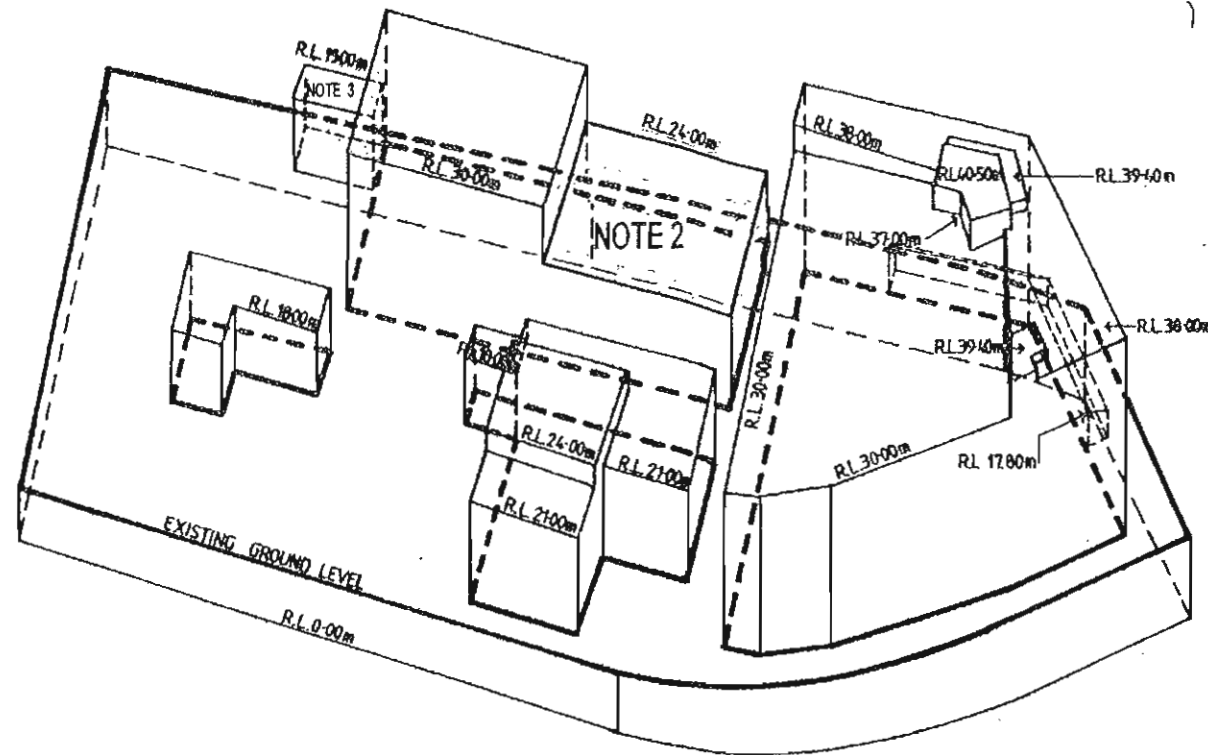
*Frank Sartor*  
8 May 08  
Date:

TITLE: BUILDING SITE CONTROL DRAWING KEY MAP: **K-3**  
SYDNEY HARBOUR FORESHORE AUTHORITY

This drawing forms part of the Approved Scheme which subject to the approval of the Minister, will be the Approved Scheme under the provisions of Environmental Planning and Assessment (Sydney Cove) Savings Transitional Regulation 1999.

FEBRUARY 2008





#### LEGEND

SITE BOUNDARY

EASEMENT

HISTORIC BUILDINGS

PEDESTRIAN ROUTE

VEHICLE ROUTE

#### PERMITTED USES

- (1) AREA NORTH OF MILL LANE  
MOTEL WITH ANCILLARY SHOPS, RESTAURANT  
AND PARKING FACILITIES  
WEEKEND MARKET -  
RETAIL STALLS AND THE LIKE
- (2) AREA SOUTH OF MILL LANE  
COMMERCIAL  
RESIDENTIAL  
SPECIAL

#### SPECIAL NOTES

- 1 - SMALL PROJECTIONS SUCH AS ANTENNAE  
AND THE LIKE, ARE THE ONLY ELEMENTS WHICH MAY BE  
APPROVED TO PROJECT ABOVE THIS ENVELOPE
- 2 - IN THE AREA MARKED NOTE 2, (THE ROCKS SQUARE), DEVELOPMENT ABOVE R.L. 21.00m  
AND TO A MAXIMUM HEIGHT OF R.L. 24.00m MAY ONLY BE APPROVED FOR THE  
PURPOSE OF A SHADE CANOPY
- 3 - IN THE AREA MARKED NOTE 3, DEVELOPMENT MAY ONLY BE APPROVED FOR THE  
PURPOSE OF AN ENTRY STRUCTURE

I Craig Knowles, Minister for Infrastructure and Planning, being the Minister  
administering the Environmental Planning and Assessment (Sydney Cove)  
Savings and Transitional Regulations 1999 hereby pursuant to clause 9 of  
that Regulation approve the variation to the approved scheme evidenced  
by this control drawing

Date:

1.8.05

The general controls as shown on this drawing are subject to the refinement of  
detail in relation to dimensions, easements, usages, open spaces and means  
of circulation and the sites shall be subject to such further conditions in relation  
to architectural details, staging, timing and future development consents.

Title:  
BUILDING SITE CONTROL DRAWING

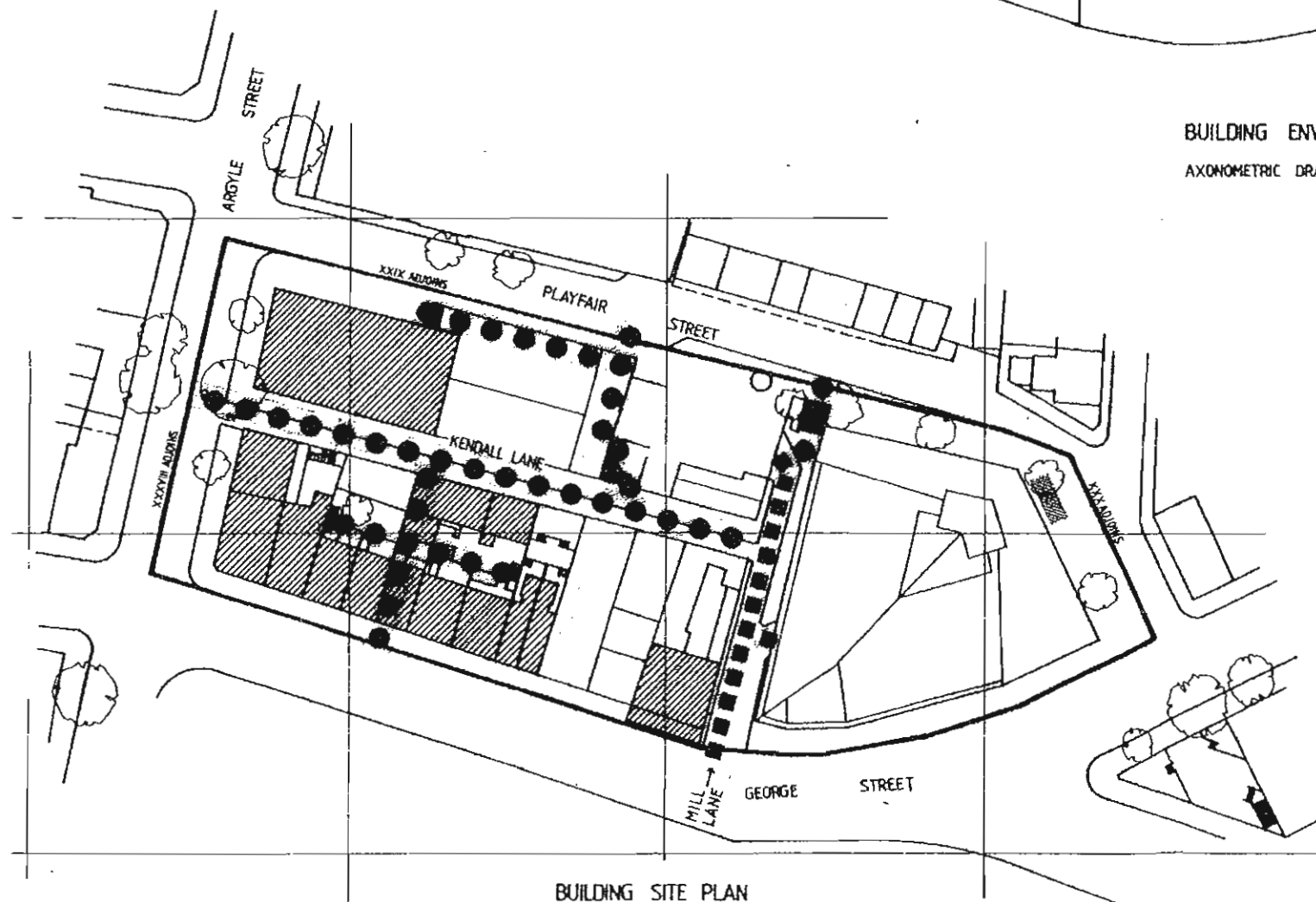
Drawn by: XXXI-C

SYDNEY HARBOUR FORESHORE AUTHORITY

Scale: 1:500

Date:

Database No: ROX-914-DA-5007-B



*Sydney*

Level 6, 66 Harrington Street The Rocks 2000 PO BOX N408  
Grosvenor Place NSW 1220  
Telephone 02 9240 8800 Facsimile 02 9240 8819