



Figure 1: Site Plan



NOTES

- ALL PLANT NUMBERS ARE APPROXIMATE ONLY AND NEED TO BE CONFIRMED BY A CONTRACTOR ON SITE. THIS PLAN IS BASED ON PDF PLANS ONLY AND MEASUREMENTS. THEREFORE MEASUREMENTS ARE APPROXIMATE ONLY.
- SOIL TESTING MIGHT BE BENEFICIAL PRIOR TO COMMENCEMENT OF ANY PLANTING WORKS.
- EXISTING FIG TREES IN CAR PARKING AREA ALONG EASTERN BOUNDARY ARE TO BE RETAINED AT THIS STAGE. FORMAL APPROVAL NEEDS TO BE OBTAINED PRIOR ANY FUTURE REMOVAL.



Department of Planning and Environment

Issued under the Environmental Planning and Assessment Act 1979

Approved Application No: SSD-8304

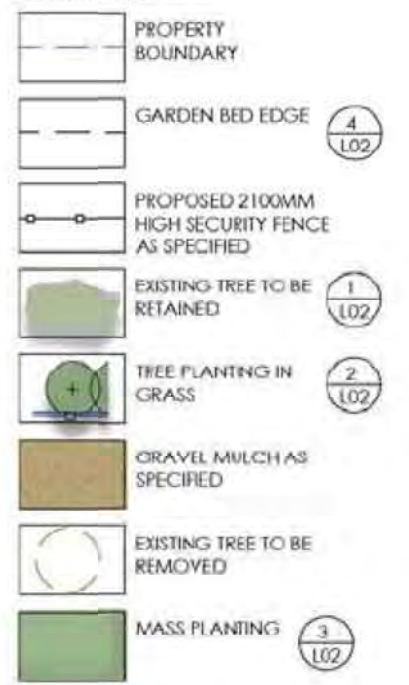
Granted on: 31 August 2022

Signed: JF Sheet No: 2 of 4

PLANT SCHEDULE

NUMBER	SYMBOL	BOTANICAL NAME	COMMON NAME	POT SIZE	SPACING	STAKING
TREES						
15	ER	Eleocharis reticulatus	Blueberry Ash	45L	as shown	2
18	CG	Casuarina glauca	Swamp Oak	75L	as shown	2
SHRUBS						
13	GRP	Grevillea 'Rosy Posy'	Greville 'Rosy Posy'	200mm	SPACING	-
76	SAC	Syzygium 'Aussie Compact'	Lilly Pilly 'Aussie Compact'	200mm	SPACING	-
GROUNDCOVERS/GRASSES/FEATURE PLANTS						
32	ABC	Anigozanthos 'Bush Gems'	Bush Gems Kangaroo Paw	140mm	2/m²	-
21	DE	Doryanthes excelsa	Gymea Lily	200mm	as shown	-
54	LLT	Lomandra longifolia 'Tanika'	Mat Rush 'Tanika'	140mm	2/m²	-
14	MP	Myoporum parviflorum	Creeping Boabialla	140mm	1/3m²	-
58	PAN	Pennisetum alupecuroides 'Nafra'	Swamp Foxtail Grass	140mm	2/m²	-

LEGEND



PLAN
1:250 - APPROX. ONLY



planning engineering landscape design management

HEAD OFFICE
385 Kara Street
Brisbane QLD 4000
PO Box 1104
Brisbane NSW 2120
T 61 2 4227 4223
F 61 2 4227 4133
i@siteplus.com.au
c@siteplus.com.au

COMMENTS
127 View St
PO Box 615
Cairns NSW 2570
T 61 2 4855 5877
F 61 2 4855 5824
c@siteplus.com.au

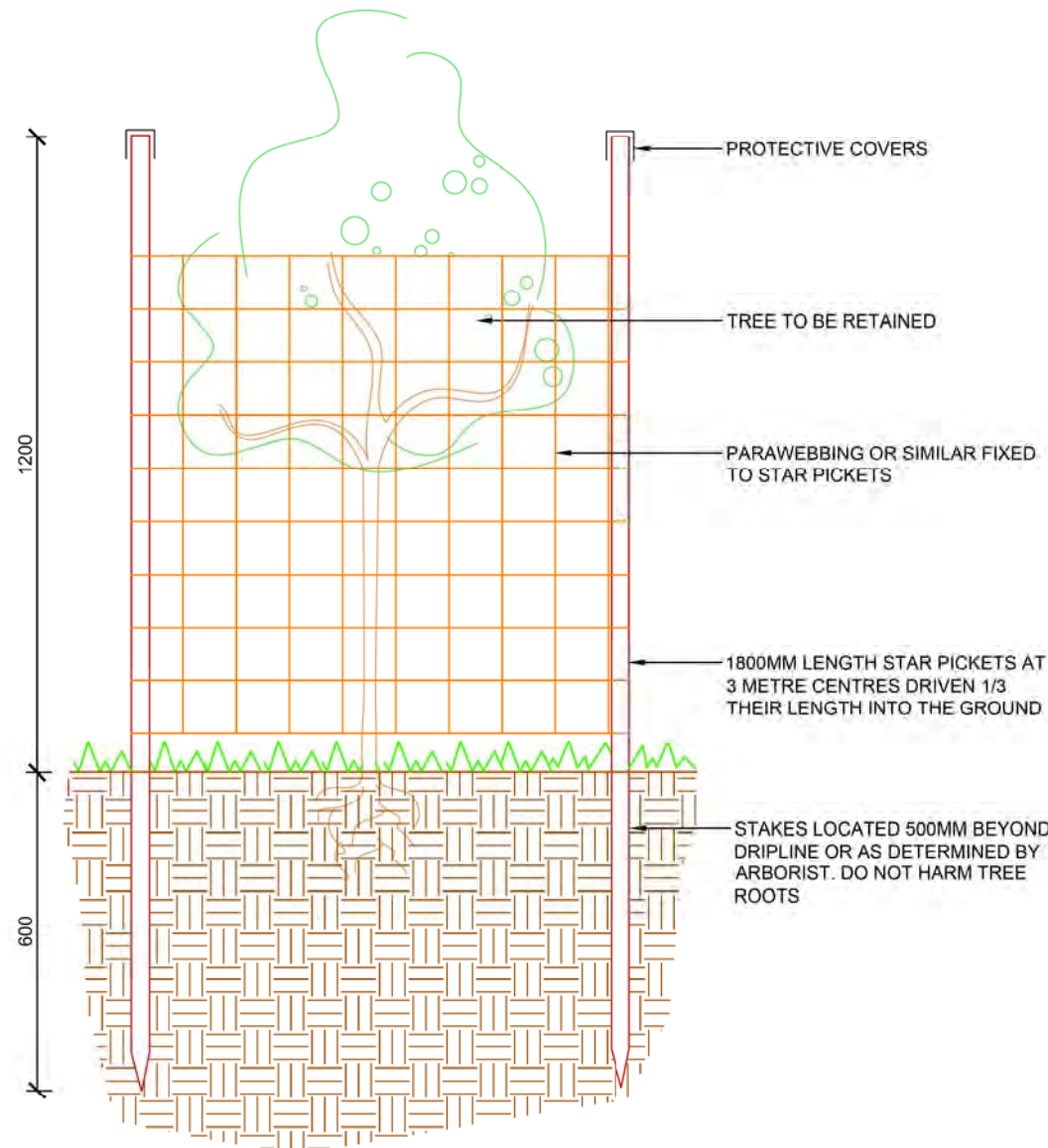
Copyright of siteplus. Figures and dimensions take precedence over scaled dimensions. Plant numbers shown on planting plan take precedence over plant schedule. Locate services prior to commencement of works. Note any discrepancies between plans to designers for determination prior to construction.



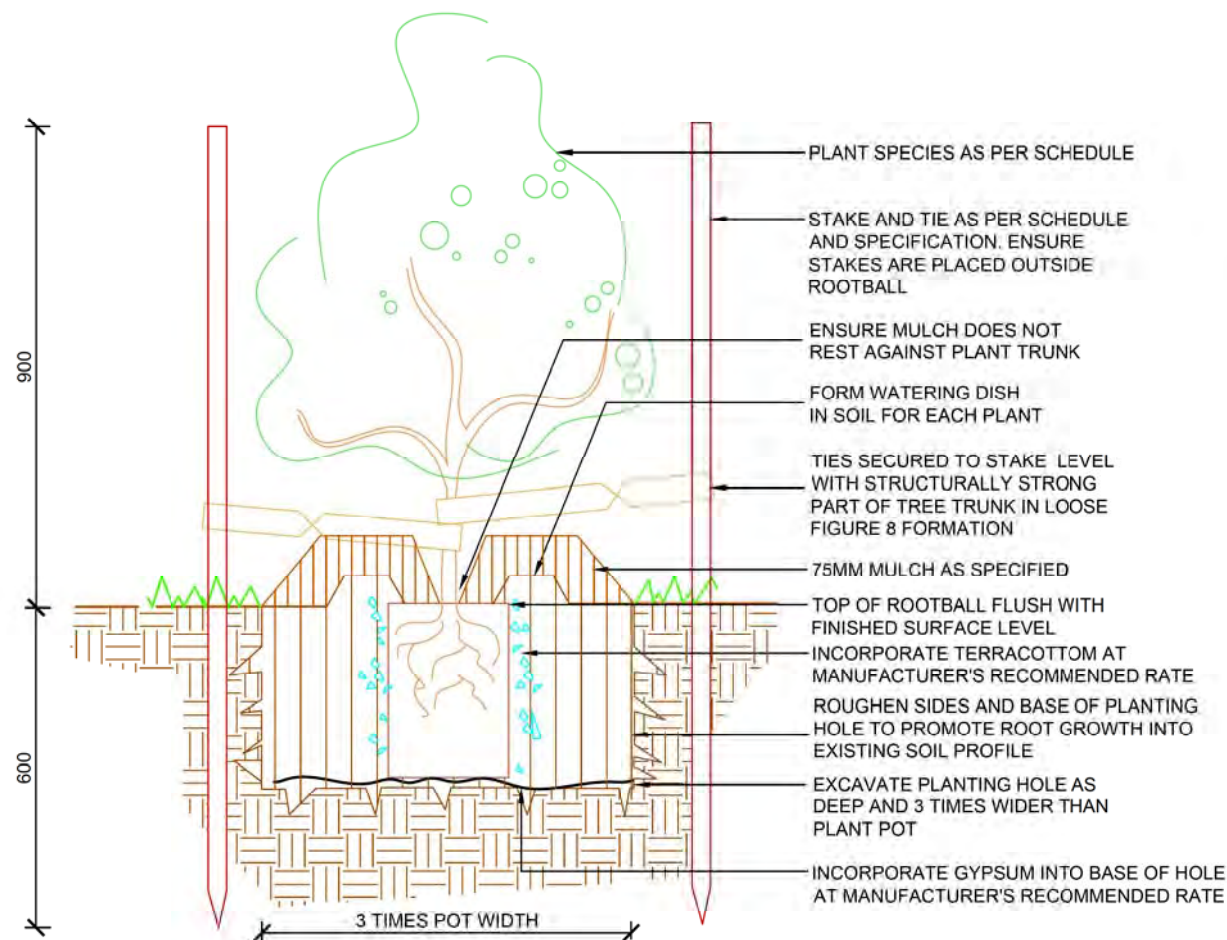
17.05.21 client information
10.05.18 client information
issue date issue description

scale AS SHOWN AT A1
date 23.04.2018
project LANDSCAPE IMPROVEMENTS
201 FIVE ISLANDS ROAD, UNANDERRA
client DGL GROUP LIMITED

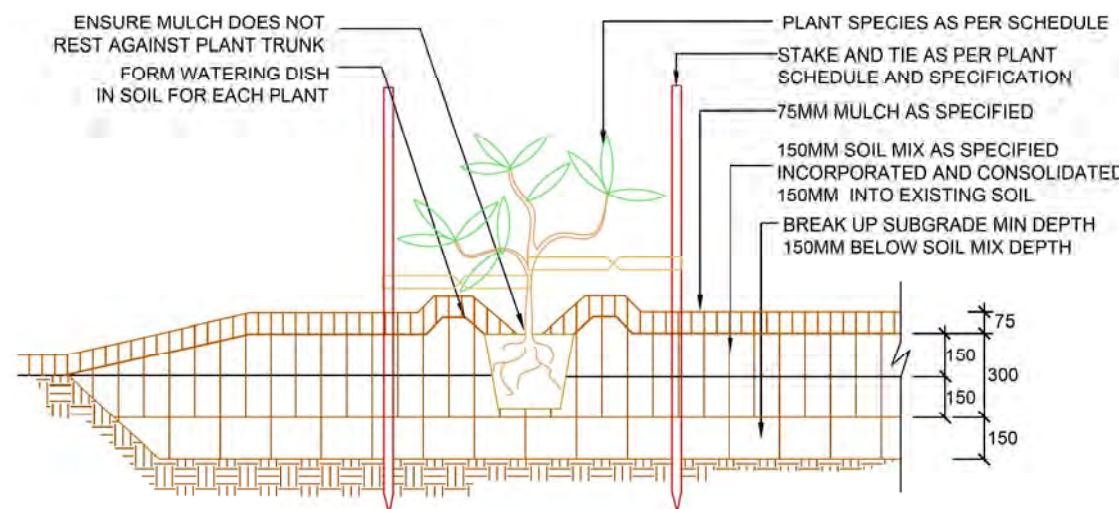
dwg title LANDSCAPE PLAN
dwg no. L01/03
project no. 18119



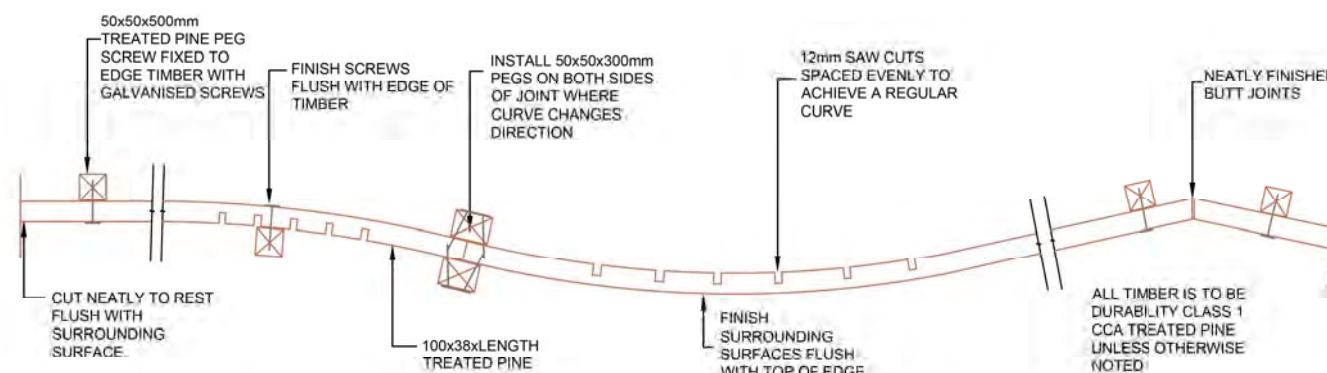
1 TREE PROTECTION
1:10



2 TREE PLANTING IN GRASS
1:10



3 MASS PLANTING
1:20



PLAN CURVED TIMBER EDGE 1:10



SECTION THROUGH JOINTS 1:5

4 TIMBER EDGE
1:5 / 1:10



Department of Planning and Environment

Issued under the *Environmental Planning and Assessment Act 1979*

Approved Application No: SSD-8304

Granted on: 31 August 2022

Signed: JF

Sheet No: 3 of 4

LANDSCAPE SPECIFICATION NOTES

SERVICES

Services locations shown are indicative only. The contractor must investigate and confirm the location of all services prior to commencement of construction.

VEGETATION PROTECTION

Trees, shrubs and groundcovers to be retained; prior to commencement of work install vegetation protection fencing and signage. Ensure the following measures are taken within the vegetation protection areas: Maintain ground levels; no storage of materials or machinery; no entrance of machinery; prevent entrance of harmful wind or water borne materials eg cement.

WEED ERADICATION

Generally, eradicate weeds using non-residual glyphosate based herbicide at the manufacturer's recommended rate and according to manufacturer's directions. Ensure herbicide does not contact plants to be retained. Do not spray during windy weather.

Remove vegetative spoil from site and dispose of spoil according to regulatory authorities requirements.

STOCKPILES

Stockpiles are to be located clear of any drainage lines and within soil and erosion control measures and shall not encroach upon Council's footpath and road reserve.

TOPSOIL

Topsoil shall mean soil which is free from organic matter, supports plant life, is free from unwanted matter such as stones, clay lumps, weeds, tree roots, sticks, rubbish, material toxic to growth and the like. Site topsoil must be stockpiled and protected from erosion for later re-use in landscaping. Subsoil and soil layers must be separated for later re-use in appropriate soil profile layers. Soil structure must be suitable for vegetative rehabilitation and must not be compacted.

COMPOST

Go Compost as available from Soilco.

PLANTING MIX

Shall consist of a homogenous blend of:

50% approved site topsoil or imported topsoil

30% compost as specified

20% D/W sand

Ensure pH 6.5 - 7.

PLANT MATERIAL

Plants shall be vigorous, well established, hardened off, of good form, consistent with species or variety, not soft or forced, free from disease or insect pests, with large healthy root systems and no evidence of being restricted or damaged, trees with leaders intact. The contractor shall furnish a warranty from the supplier that the plants are true to the specified species and type, free from diseases, pests, weeds and the like.

PLANT STORAGE

Wherever possible, plants shall be planted immediately following delivery to the site. If this is not possible, keep plants in good condition by appropriate storage methods or as directed by the landscape designer. prevent theft, drying out or damage from any cause including frost, wind, sun, vermin, animals and the like.

MULCH

General: Mulch shall be free of deleterious and extraneous matter including soil, weeds and the like. Organic mulch shall be free of rocks. Mulch must be free from pests and diseases. Mulch shall not contain chemicals or foreign matter. pH to be neutral.

Type: Mulch shall be 'Cottage Mulch' available from Soilco or similar.

Placement: Place mulch to depth shown on detail. Keep mulch free from plant stem.

PLANTING CONDITIONS

Do not plant in unsuitable weather such as extreme wind, cold heat or rain. Suspend excavation in soils other than sandy soils when soil is wet.

SETTING OUT

Deliver plants to the site as close to the time of planting as possible. Handle plants in such a manner as to avoid damage to them. Planting shall be in accordance with the landscape plan. Remove the plant container and gently tease outer roots away from the soil mass to prevent their continual inward growth. Remove all containers from the site immediately after planting and thoroughly clean and tidy all areas at the close of each day's planting.

PLANTING

Provide minimum backfill of 200mm for all planted stock. Excavate a hole sufficient to allow the backfill required to all sides of the excavation. Post hole diggers shall not be used. Break up the sides and base of the hole to prevent confinement of the roots to the hole. The plant shall be positioned so that the top of the root ball lies flush with surrounding soil after lightly tamping and settling the backfill topsoil. Refer to relevant detail. Advanced trees must be positioned to face the same aspect as when grown in the nursery.

WATERING

Thoroughly water the plants prior to planting, immediately after planting and prior to mulching.

STAKING

Stakes shall be hardwood, straight, free from knots or twisting and pointed at the base. They shall be driven into the ground one third of their length. Stakes shall be placed so that they do not damage the plant rootball or foliage. Refer to plant schedule for number of stakes per plant. Stakes sizing shall be according to plant pot size as follows.

25L - 75L pot

35x35x1500mm

FERTILISER

Fertiliser shall be obtained from a specialist manufacturer and suited to the application in mass planted beds, turf or advanced plants in individual planting holes. It must be applied strictly in accordance with the manufacturer's specification.

ROOT BARRIER

Install 1200mm depth root barrier to manufacturer's specification where trees are to be placed within 3 metres of structures or services. Root barrier to be Root Wall available from Treemax Ph. 1800 550 000.

SECURITY FENCE

General: Remove existing fence along northern and eastern boundary and install proposed security fence.

Product: to be a 2.1m high flat top tubular steel fence. Horizontal rails to be 40mm x 40mm x 1.6mm. Vertical pickets to be 25mm x 25mm x 1.2mm. Tube spacing: 140mm, Galvanised steel finish. Colour: black. Or client approved equivalent.

GRAVEL MULCH

to be Nepean River Pebble 10mm or client approved equivalent.

LANDSCAPE MAINTENANCE NOTES

Landscape contractor must carry out maintenance for a minimum period of 1 year from the date of practical completion of landscape works to ensure the full establishment of plant material. Maintenance is to include but not be limited to watering, weeding, mowing, rubbish removal, staking and tying, fertilising, pest and disease control, replacement of dead plant material and turf, renovation, pruning, cultivation and reinstatement of mulch.

DURATION AND ATTENDANCE

Landscape contractor is to attend the site weekly for the duration of the stated maintenance or plant establishment period and maintain the site to the satisfaction of Council.

WATERING

Water grass, trees, shrubs, groundcovers and turf to ensure their establishment and continued healthy, vigorous growth.

RUBBISH

Remove rubbish from site at each weekly maintenance visit to ensure neat presentation of site at all times.

PLANT MATERIAL

Replace all dead, damaged or missing plant material at contractor's cost. Replacement plant are to be identical to those originally installed unless otherwise approved by Landscape Designer. Replacements shall be made within 2 weeks of the plant failing or being removed.

STAKING

Replace or adjust stakes and ties as required or directed by Landscape Architect. Remove stakes and ties at end of maintenance period or as directed by Landscape Architect.

PRUNING

Remove dead, diseased or damaged plant material to improve the health, vigour and foliage density of the plant material. Remove and dispose of prunings away site according to relevant authorities regulations.

MULCH

Reinstate mulch to maintain 75mm depth. Ensure mulch does not contact plant stems.

PESTS AND DISEASES

Report detection of pests and diseases to Landscape Architect as soon as they are noticed. Treat with accepted horticultural methods including but not limited to spraying according to manufacturer's recommendations to control infestations of pests and diseases.

WEED REMOVAL

Remove all above and below ground parts of weed plants either by hand or by application of non-residual glyphosate based herbicide applied according to manufacturer's recommendations. Ensure herbicide does not contact plant material to be retained. Remove grass and other vegetation from an area 750mm diameter around the base of trees in grass. Eradication of weeds is to be continuous throughout the duration of the maintenance or plant establishment period and is to be carried out at each weekly maintenance visit.

SOIL SUBSIDENCE

Reinstate soil to finished design levels following any erosion or subsidence.



Site Plus Pty Ltd ABN 73 104 315 095

planning engineering landscape design management

HEAD OFFICE
345 Varsity Drive
Woolongong NSW 2590
PO Box 9156
Woolongong NSW 2520
T 61 2 4227 4223
F 61 2 4227 4133
E info@siteplus.com.au

CAMDEN
12 View St
Camden NSW 2570
T 61 2 4655 5677
F 61 2 4655 5604
E camden@siteplus.com.au

Copyright of siteplus. Figures
dimensions have precedence
over scaled dimensions. Plant
numbers shown on planting plan
take precedence over plant
schedule. Locate services prior
to commencement of works.
Refer any discrepancies
between plans to designers for
determination prior to
construction.

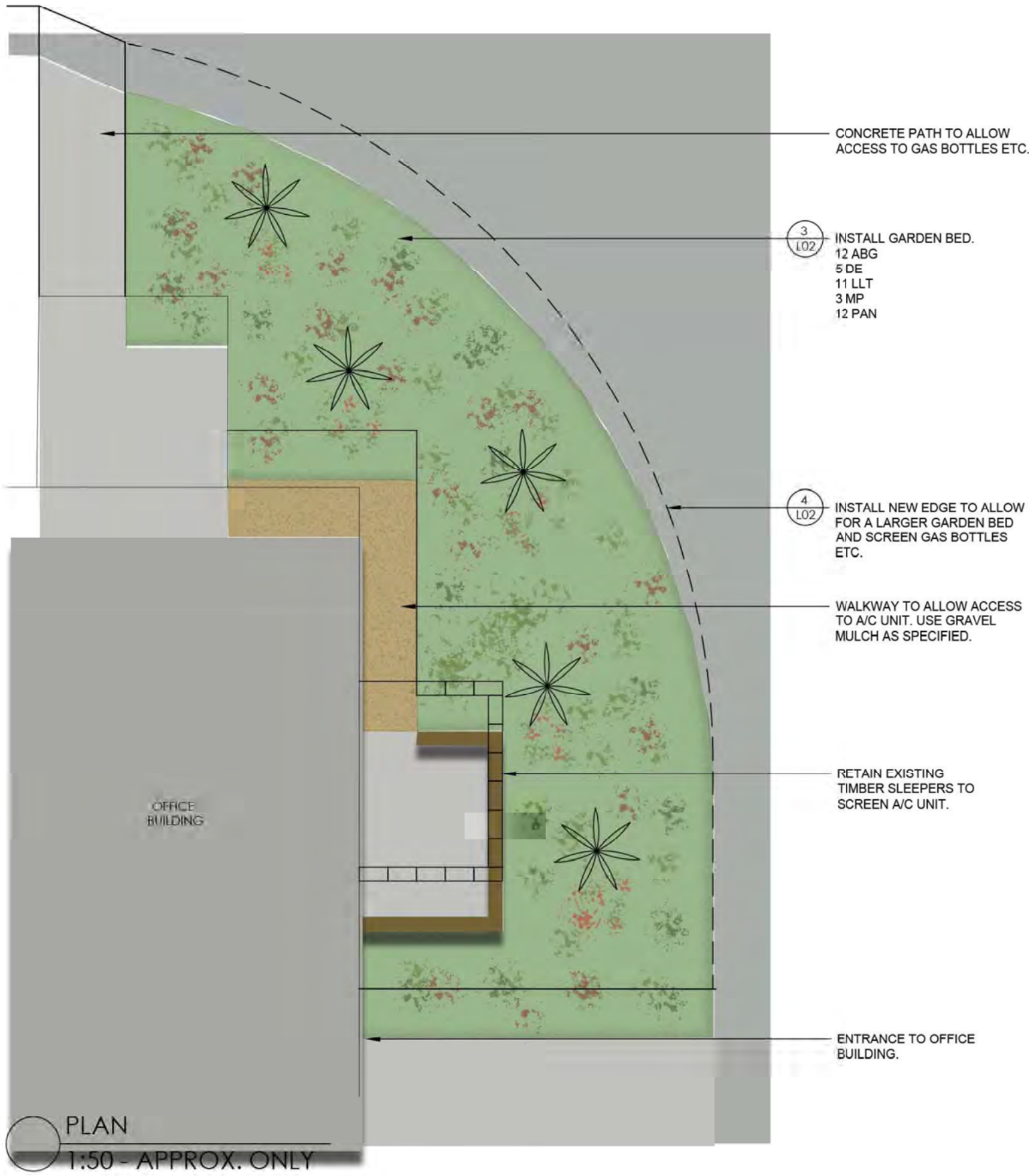


B 17.05.21 client information
A 10.05.18 client information
issue issue date issue description

KP KM AC
des km VM
dwn app

scale AS SHOWN
AT A1
date 23.04.2018
project LANDSCAPE IMPROVEMENTS
201 FIVE ISLANDS ROAD, UNANDERRA
client DGL GROUP LIMITED
dwg title LANDSCAPE DETAILS AND
LANDSCAPE NOTES
dwg no. L02/03
project no. 18119

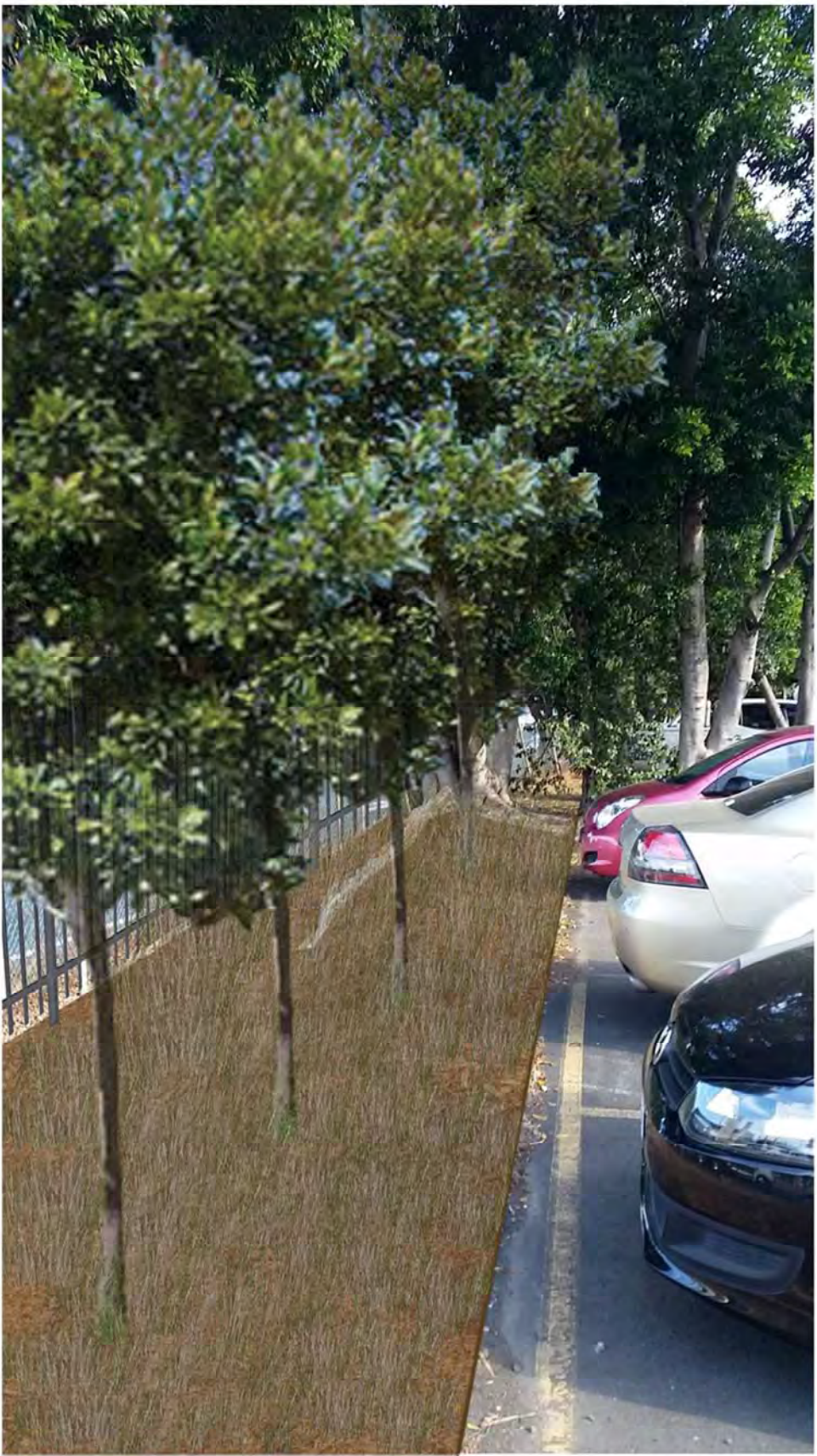
CHARACTER IMAGES OF POSSIBLE PLANTING AREAS



GARDEN BEDS NEAR OFFICE BUILDING



GARDEN BED TO THE NORTH OF ENTRANCE OF OFFICE BUILDING



SCREEN PLANTING ALONG EASTERN BOUNDARY



Department of Planning
and Environment

Issued under the Environmental Planning and Assessment Act 1979
Approved Application No: SSD-8304

Granted on: 31 August 2022

Signed: JF Sheet No: 4 of 4



B 17.05.21
A 10.05.18
issue issue date

client information
client information
issue description

scale
AS SHOWN
AT A1
date
23.04.2018

project
LANDSCAPE IMPROVEMENTS
201 FIVE ISLANDS ROAD, UNANDERRA
client
DGL GROUP LIMITED

KP KP AC
KM KM VM
des dwn app

dwg title
DETAIL PLAN & CHARACTER IMAC
dwg no.
L01/03
project no.
18119