

**11-19 MIDDLE HARBOUR ROAD**

LINDFIELD NSW 2070

---

# **LANDSCAPE CONCEPT REPORT**

29<sup>TH</sup> MAY 2025

**GROUND iNK**



# GROUND iNK

GROUND iNK PTY LTD

LEVEL 4, 56 NERIDAH STREET  
CHATSWOOD NSW 2067  
(02) 9411 3279

WWW.GROUNDINK.COM.AU

## ACKNOWLEDGEMENT

GROUND iNK would like to acknowledge the Traditional Custodians of the land we work on. We pay our respects to Elders past, present and emerging and recognise their ongoing connection to Country.

ISSUE	DATE	DESCRIPTION	DRAWN	CHECKED
A	21/05/25	CONCEPT ISSUE	QN	RL





CONTENTS

CONTEXT

EXISTING LANDSCAPE CHARACTER	4
PROPOSED LANDSCAPE CHARACTER	5

DESIGN

LANDSCAPE MASTERPLAN	6
GROUND FLOOR LANDSCAPE PLAN	7
DEEP SOIL	8
OPEN SPACE	9

PLANT SCHEDULE

INDICATIVE PLANT PALETTE	10
--------------------------	----

EXISTING LANDSCAPE CHARACTER



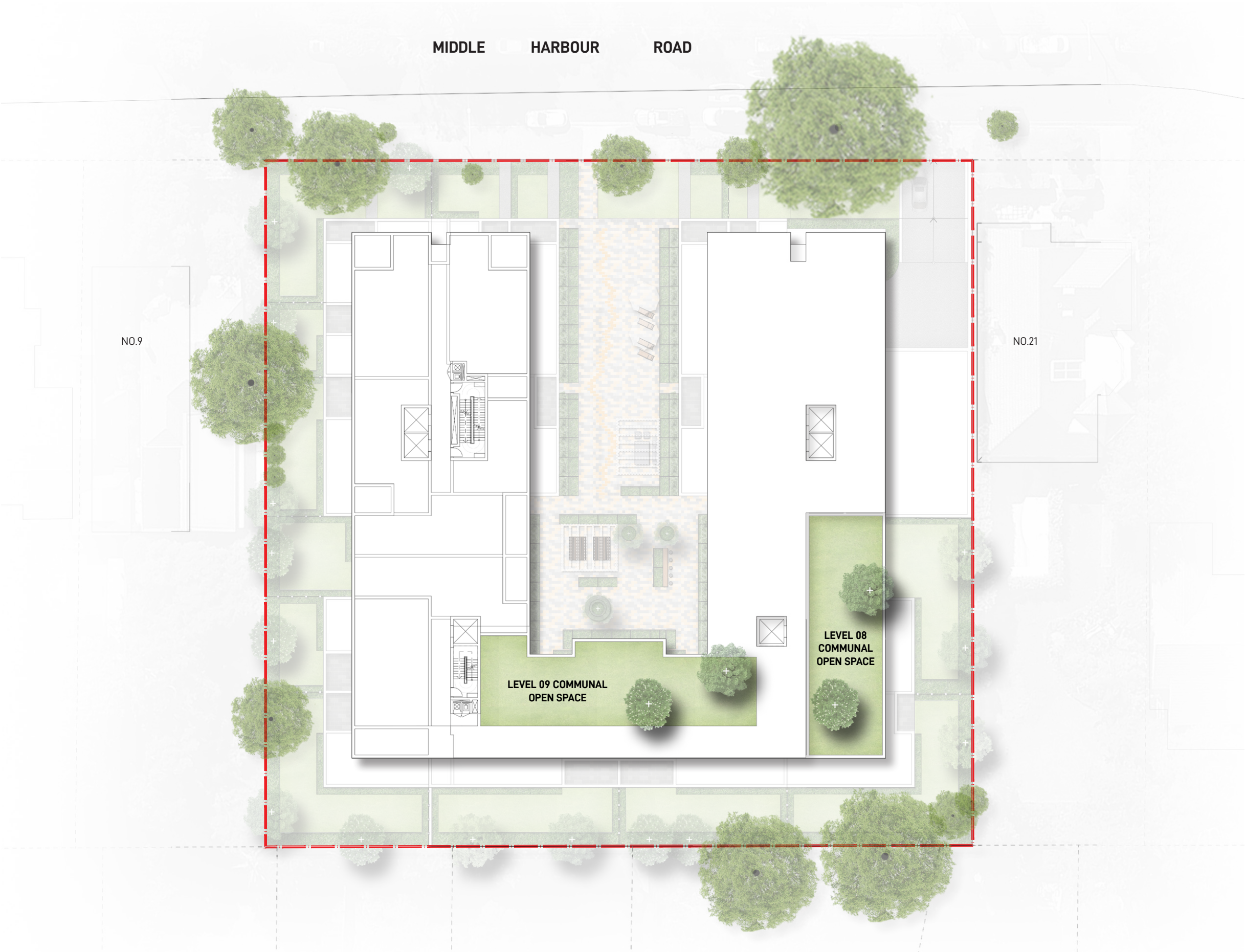


PROPOSED LANDSCAPE CHARACTER



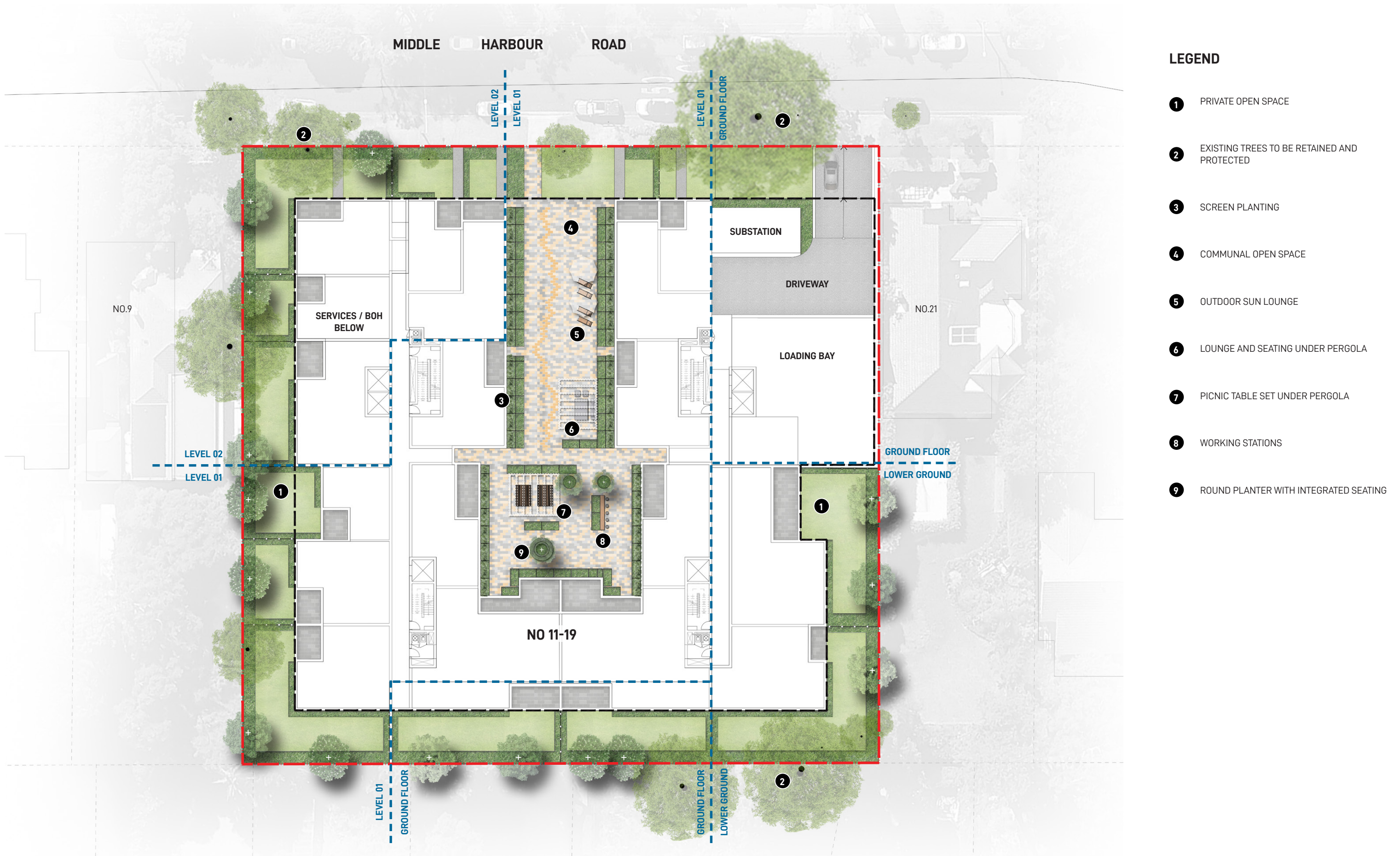


LANDSCAPE MASTERPLAN



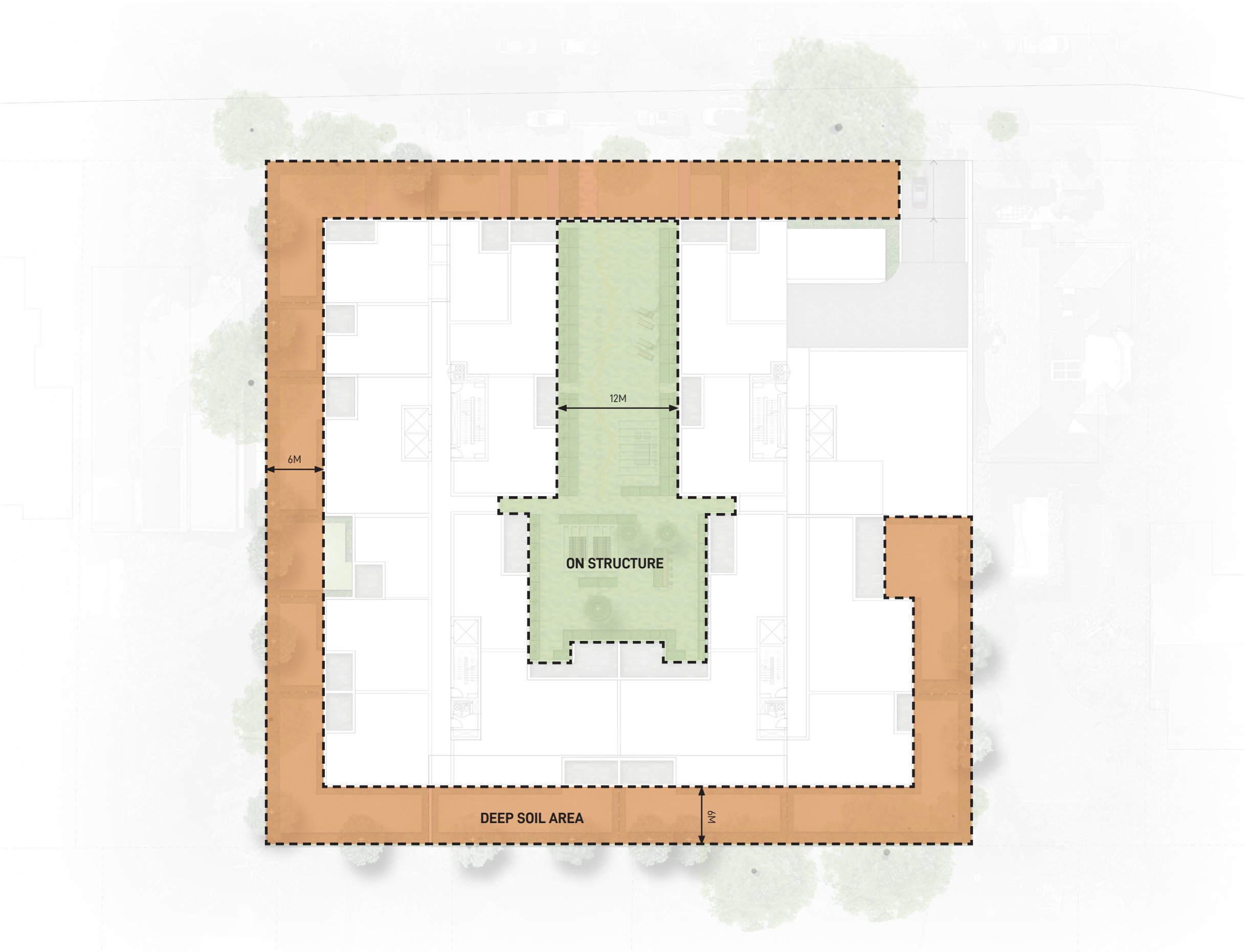


## GROUND FLOOR LANDSCAPE PLAN



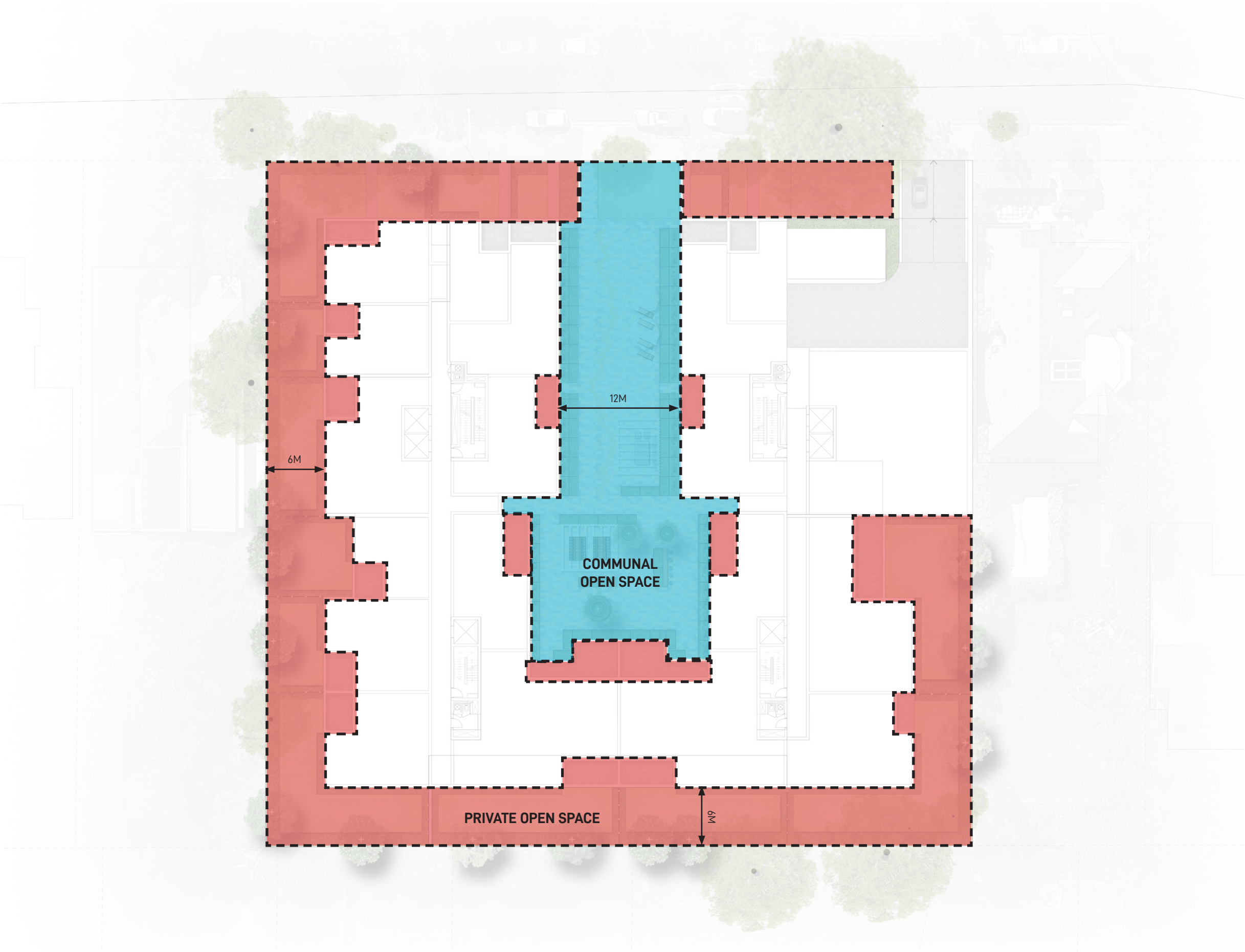


DEEP SOIL





OPEN SPACE





# INDICATIVE PLANT PALETTE

## Large trees



*Angophora costata*



*Eucalyptus paniculata*

## Small trees



*Acmena smithii*



*Backhousia citriodora*



*Callicoma serratifolia*

## Trees & Tree Ferns



*Dicksonia antarctica*



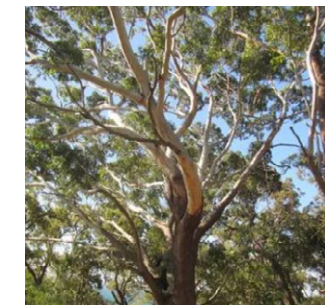
*Elaeocarpus reticulatus*



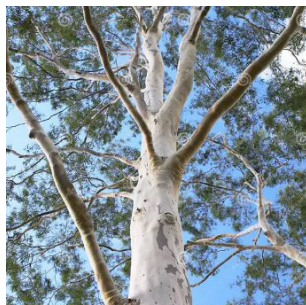
*Eucalyptus saligna*



*Waterhousia floribunda*



*Eucalyptus pilularis*



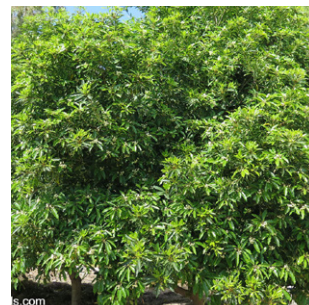
*Eucalyptus saligna*



*Elaeocarpus reticulatus*

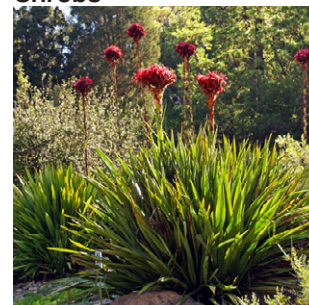


*Homalanthus populifolius*



*Pittosporum undulatum*

## Shrubs



*Doryanthes excelsa*



*Melalueca thymifolia*



*Polyscias sambucifolia*



*Solanum aviculare*

## Shrubs



*Banksia 'Birthday Candles'*



*Breynea oblongifolia*



*Bursaria spinosa*

## Palms & Ferns



*Adiantum aethiopicum*



*Asplenium australasicum*

## Grasses & Groundcovers



*Chrysocephalum apiculatum*



*Dianella caerulea*



*Dianella 'Cassa Blue'*



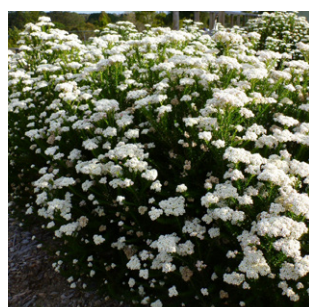
*Dichondra repens*



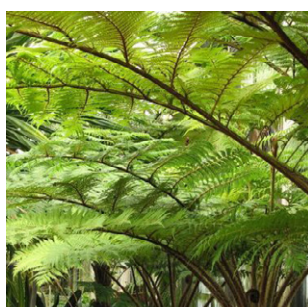
*Dodonea triquetra*



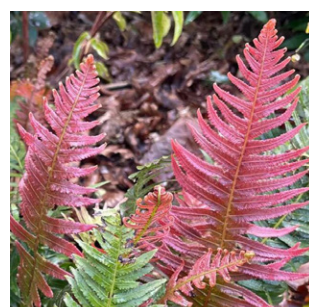
*Indigofera australis*



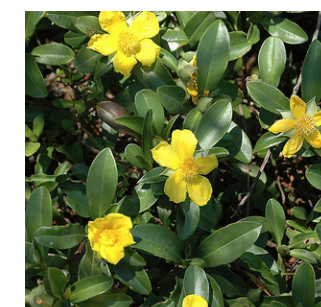
*Ozothamnus diosmisfolius*



*Cyathea australis*



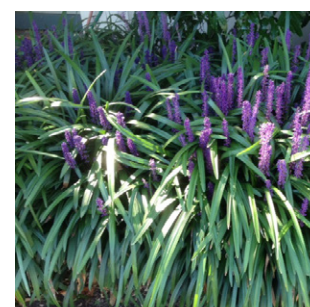
*Doodea aspera*



*Hibbertia scandens*



*Liriope 'Amethyst'*



*Liriope 'Evergreen Giant'*



*Lomandra filiformis*

## Grasses & Groundcovers



*Carex appressa*



*Goodenia hederacea*



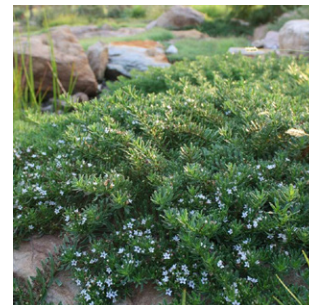
*Pennisetum 'Nafray'*



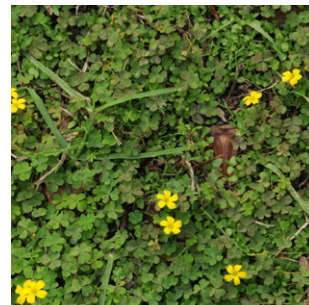
*Poa labillardieri 'Eskdale'*



*Themeda triandra*



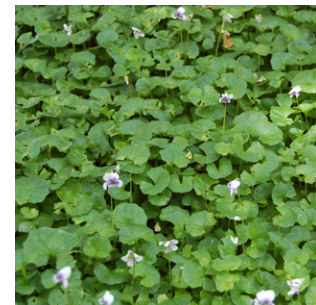
*Myoporum 'Yareena'*



*Oxalis exilis*



*Tetragonia tetragonoides*



*Viola hederacea*



**GROUND iNK PTY LTD**

LEVEL 4, 56 NERIDAH STREET  
CHATSWOOD NSW 2067  
(02) 9411 3279

[WWW.GROUNDINK.COM.AU](http://WWW.GROUNDINK.COM.AU)

**GROUND iNK**