

LANDSCAPE DESIGN APPROACH

Artist impression

Design Approach

Landscape Typologies

Four distinct typologies collectively make up the landscape at 153-157 Walker Street. Each offers a unique amenity and aesthetic while being held together by a project-wide aesthetic.

Lobby Landscapes

The lobby landscapes signal the arrival to the hotel and residential apartments. Tying into Dorris Fitton Park - by drawing landscape in at Little Walker Street - and through to Walker Street, the landscape features layered, cascading planters that take advantage of the double height spaces to welcome people upon arrival.

Hotel

Provided over 3 levels, the hotel landscapes provide a functional external complement to the internal hotel amenities. Blurring the line between indoor and out, the spaces allow visitors to extend their internal living space.

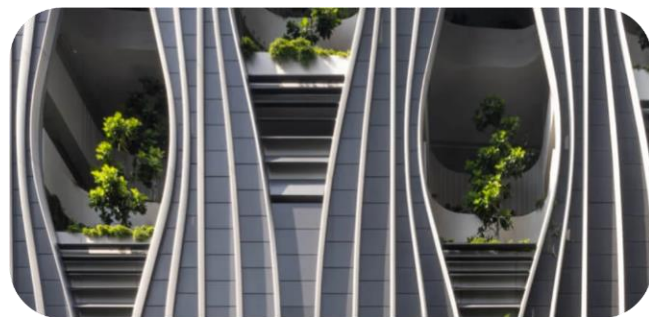
Communal Open Space (COS)

Located at level 33, the COS provides extended living space for residents beyond their apartments. Consisting of internal and external spaces, offering amazing views over the neighbourhood and City, the space engages with Sky Country, whilst endemic plantings and biophilic materials create connection to place.

Podium Facades

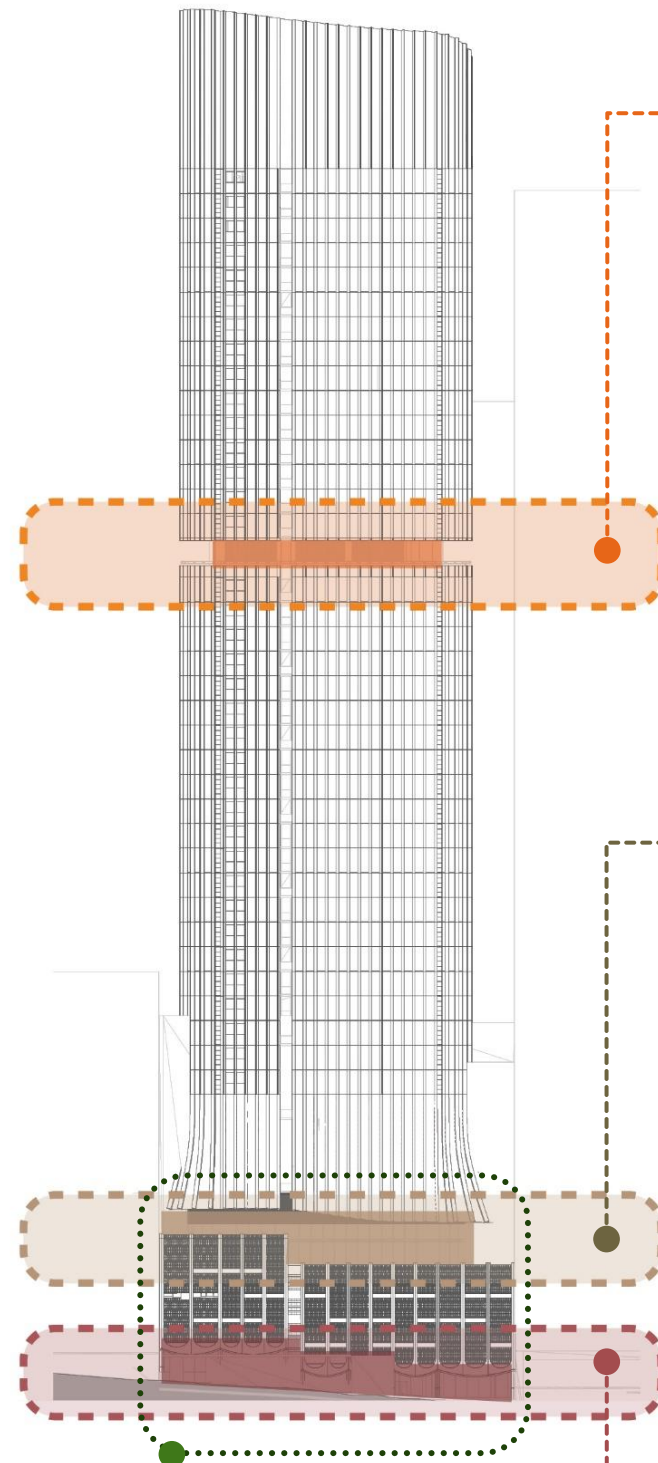
Drawing inspiration from the eroded sandstone of North Sydney, the facades mimic the way plants inhabit the hollows and bring life to these amazing rock formations; much like the podium creates a solid base upon which the building stands.

Precedent



Podium Facades

Little Walker St, Walker St



Precedents



Communal Open Space
L33

Precedents



Hotel Communal Spaces
Levels 3, 5 and 6

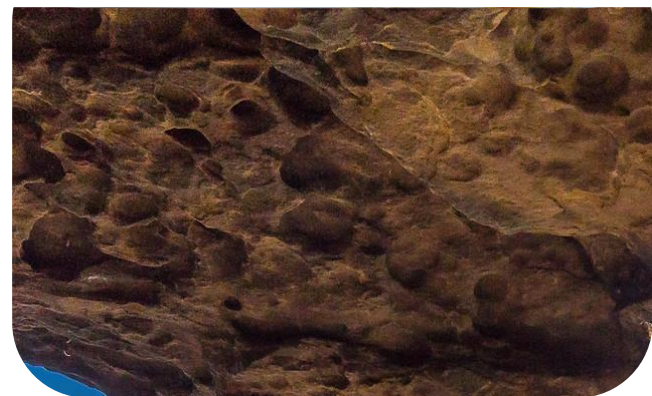
Precedents



Lobby Landscapes

Little Walker St, Walker St

Formed by Water and Wind



Learning from Country as a design generator is key. Sandstone outcrops are cornerstones of Sydney Harbour's character. Undulating and honeycombed by salt and wind - our built facade can similarly be "formed" by its function and environment.

Inhabiting the Hollows



Sydney Harbour was a key gathering place and food source for the Cammeraygal. Men gathered rock oysters, hairy mussels, Sydney cockles and mud oysters while women gathered shellfish, and all sheltered in the sandstone hollows. We still seek shelter in hollows and a reflection of this forms our design aesthetic.

Enclosure and Exposure



The local landscape has a diversity of experience, from dense shaded pockets of figs and ferns, to exposed sandstone headlands. This sense of enclosure and revelation can be applied to create diverse and flexible spaces.

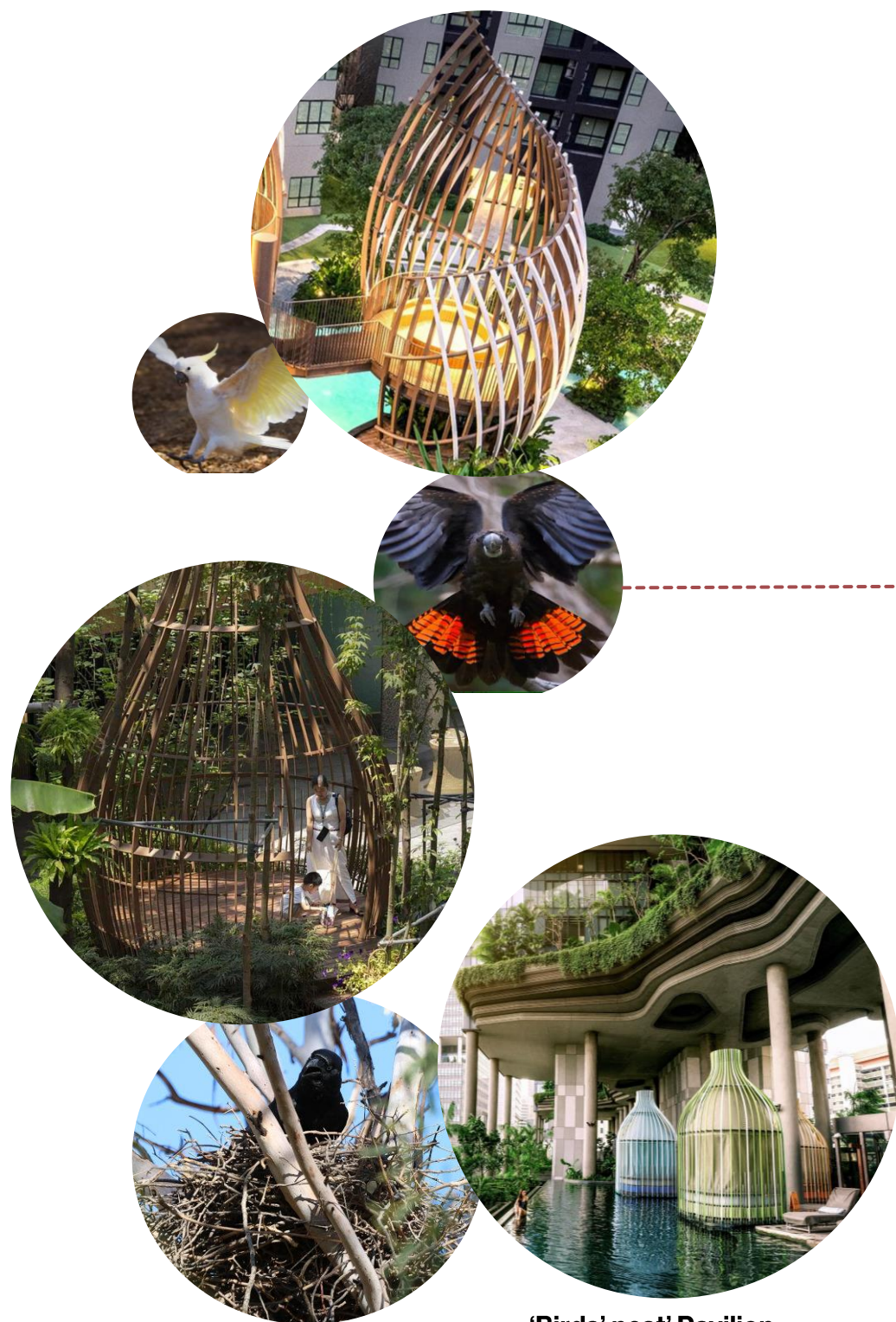
Home and Away



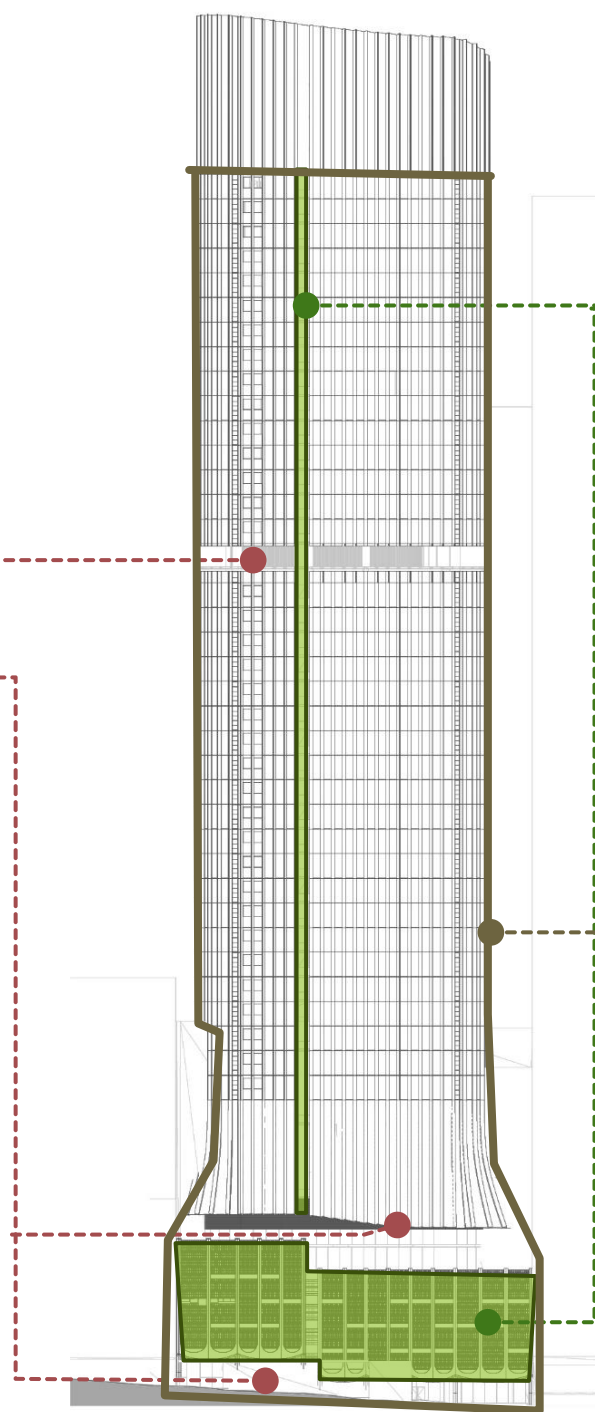
By anchoring our design in Place, 153-157 Walker Street can be a home for its residents, a home away from home for its visitors, and provide space for its community.

Design Approach

Landscape Typologies



'Birds' nest' Pavilion



Vertical 'Cliff Edge' Garden



Endemic vegetation across all levels

LOBBY LANDSCAPE



Artist impression

Lobby Landscape

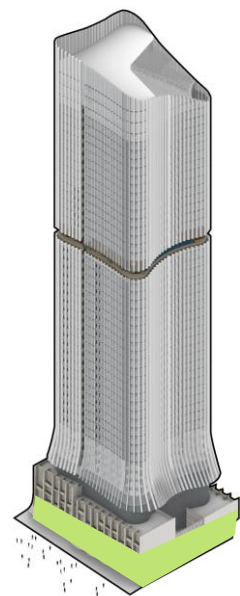
Little Walker St Masterplan

Lower Lobby

The lower lobby landscape metaphorically draws landscape into the site from Dorris Fitton Park.

Taking inspiration from the undulating sandstone cliff edge, the lobby addressing Little Walker Street leverages the cross-level void height to create an immersive experience that transitions seamlessly from this level up to the Walker Street lobby.

The planting selection features endemic species from the North Sydney region, designed to create a gully experience with cascading planting and a nest inspired pavilion, that visually link the lower and upper lobbies.



Precedent Images

LITTLE WALKER STREET

Lower Ground Level – Plan

Lobby Landscape Design

Walker St Masterplan

Upper Lobby

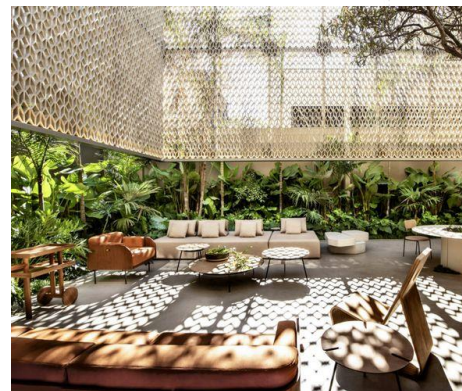
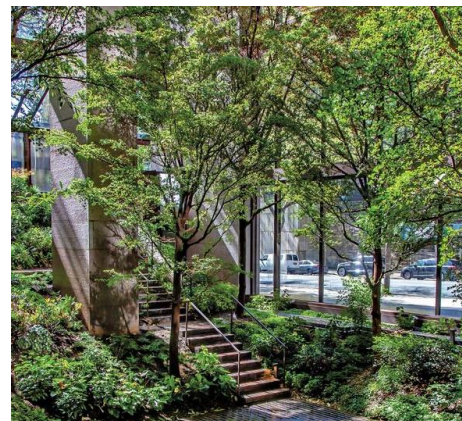
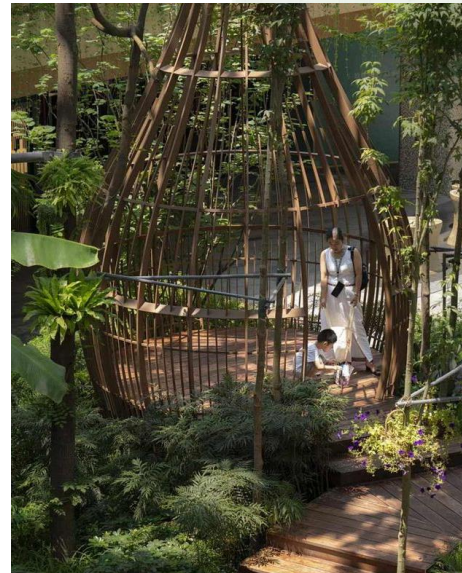
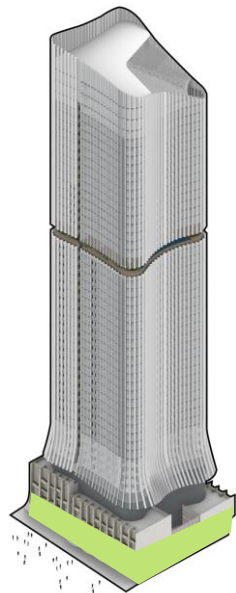
As an extension of the lower lobby, the Walker Street lobby pulls landscape up and along the northern wall to Walker Street.

Landscape along the cross-level stairs evokes the experience of walking through a gully with endemic species cascading and clambering over the terraced forms.

A custom artistic pavilion, inspired by the form of a bird's nest, serves as a focal point for both the lobby and the landscape edge.

On the southern edge, an inclusive courtyard space offers a communal outdoor area for hotel guests and residents.

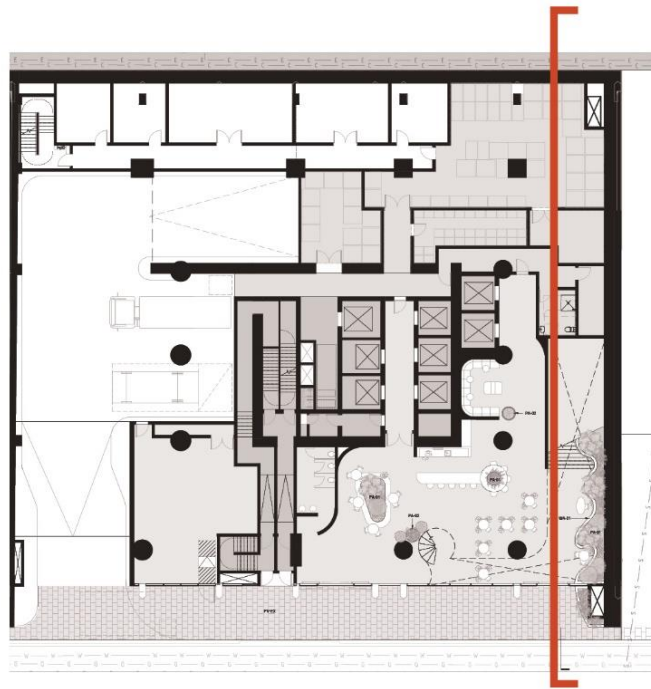
The incorporation of cross-level voids and small canopy trees fosters a sense of enclosure and creates a series of warm and welcoming spaces for hotel guest and residents alike as they enter their specific lobbies.



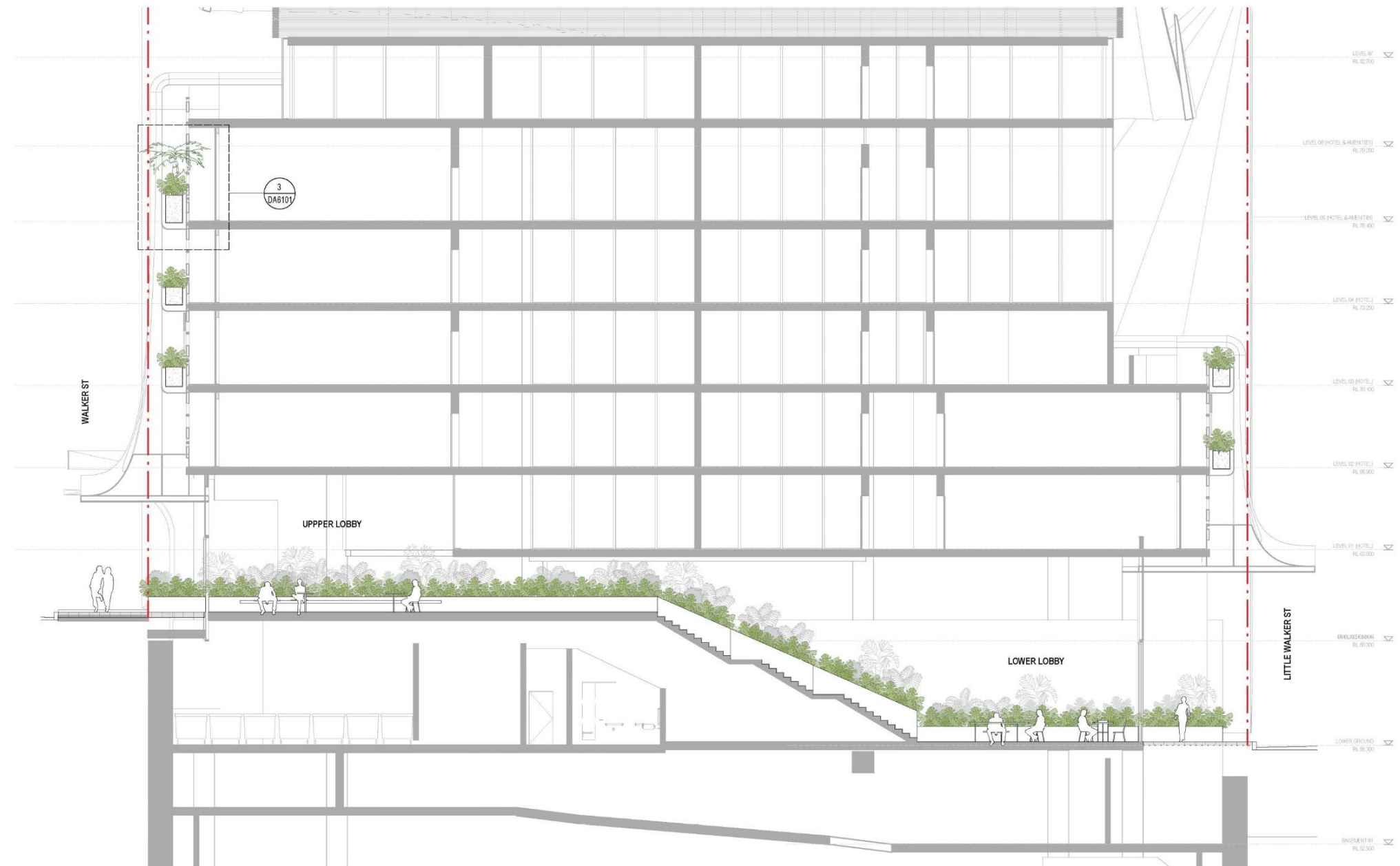
Precedent Images

Upper Ground Level – Plan

Streetscape Design Landscape Sections



Key Plan



Section 1 – Lower Ground Floor Section 1

HOTEL COMMUNAL SPACE

Artist impression

Hotel Design

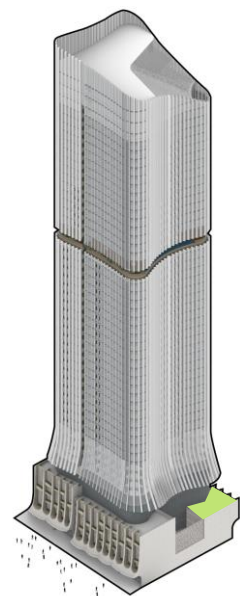
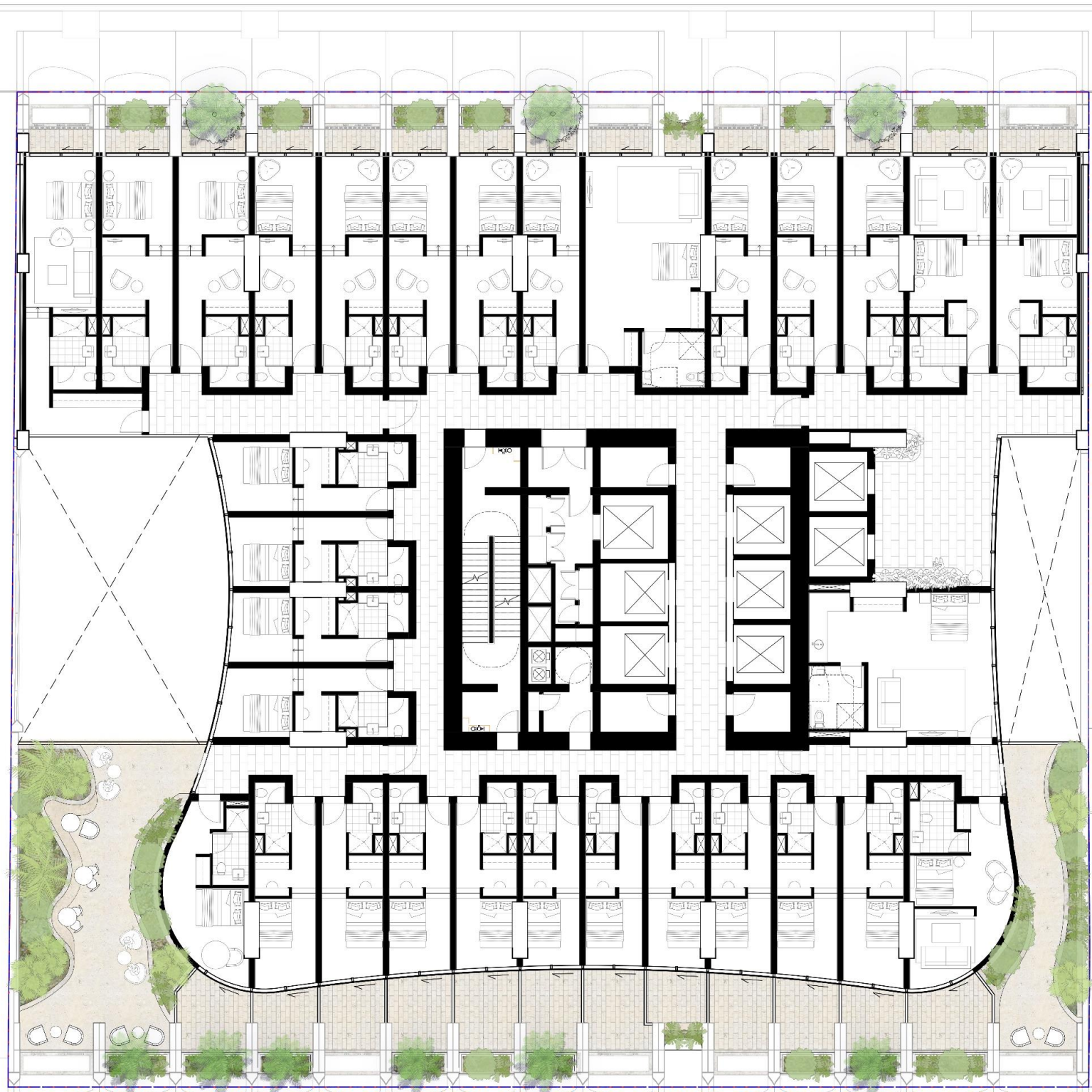
Level 3 Masterplan

L03 Hotel Breakout Space

Level 03 offers two communal breakout areas for hotel guests - one to the north and one to the south - overlooking Little Walker Street.

Consisting of a series of flexible seating spaces, these breakout areas offer additional space for guests to use for work or rest.

Pushed right to the edge of the built form, the spaces provide opportunities to enjoy the stunning cross-level vertical gardens on the eastern façade and the internal courtyard below.



Precedent Images

Hotel Level 03 Plan

Hotel Design

Level 5 Masterplan

L05 Hotel Communal Space

The external space on Level 05 offers a complementary extension of the internal spaces, matching program and amenity inside and out.

As an extension of the indoor bar space, the western balcony offers numerous seating opportunities at the slab's edge and connects hotel guests to the vertical garden on the western façade.

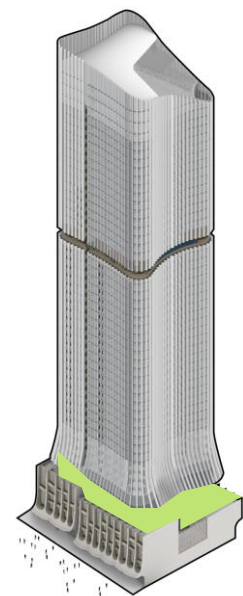
Raised planters create thresholds and transitions between spaces allowing the outdoor rooms to be used as a whole or subtly divided based on need.



Precedent Images



Hotel Level 05 Plan



Hotel Design

Level 6 Masterplan

L06 Hotel Communal Pool

Level 06 features a pool area that, while an indoor space, boasts a lush landscape.

Another nest-inspired pavilion - seemingly floating at the pool's edge - adds an artistic and striking focal point to the space.

Raised planter beds offer privacy to the pool lounge areas, while landscaping along the void edge alludes to the connection between Levels 05 and 06.

An external terrace to the north extends the internal gym offer by providing space for yoga and seating.

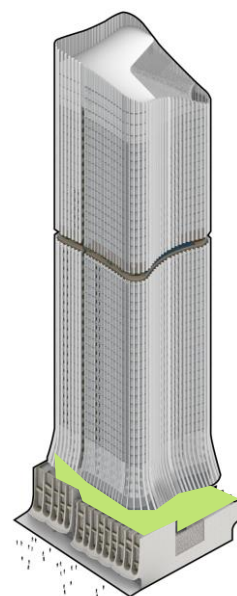
Similar to level 05 below, seating opportunities at the slab's edge connect hotel guests to the vertical garden on the western façade.



Precedent Images

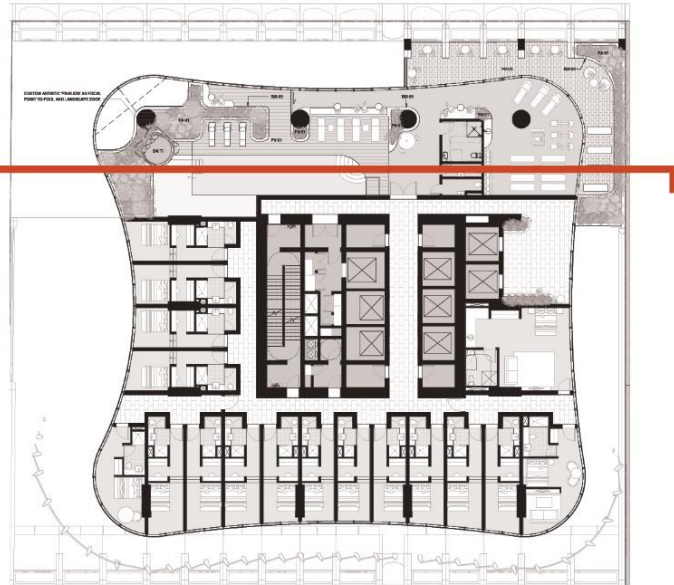


Hotel Level 06 Plan

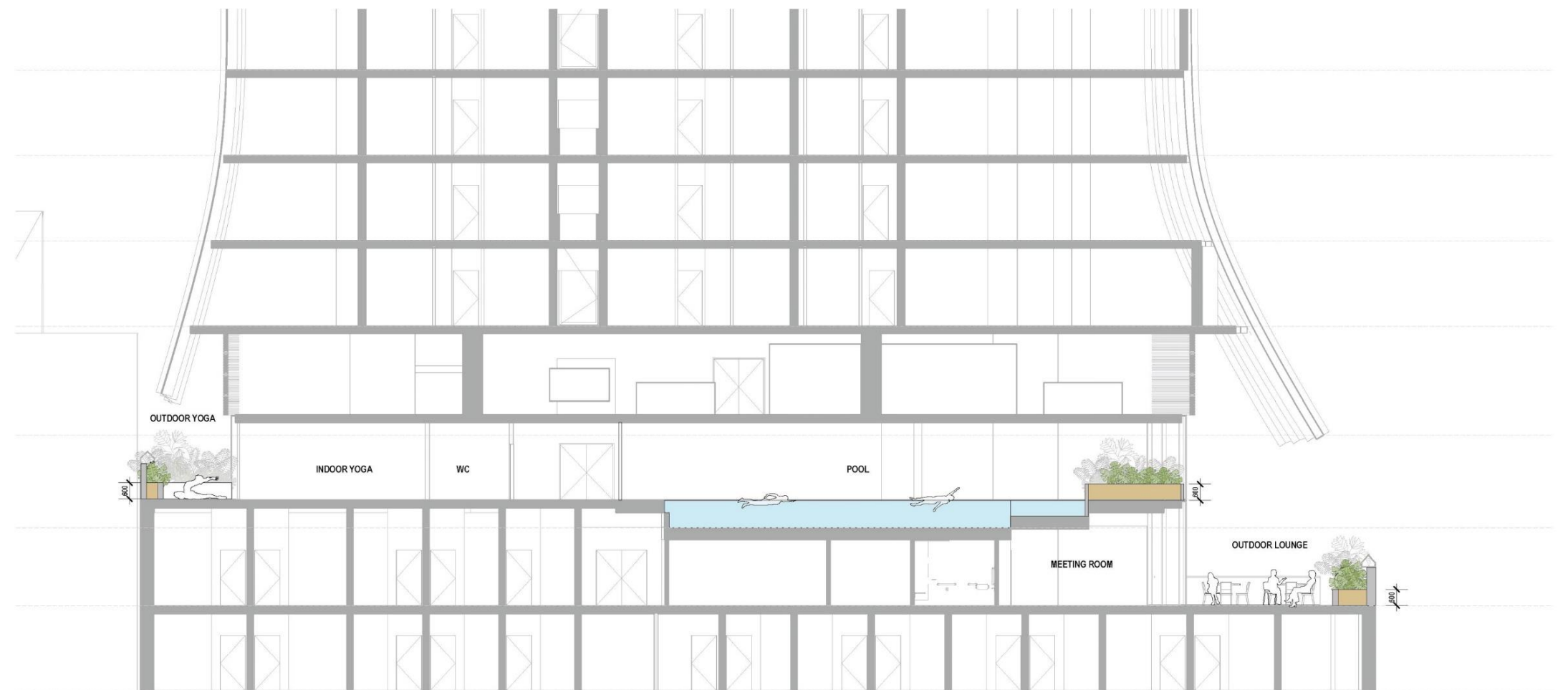


Hotel Design

Landscape Sections



Key Plan



Section 2 – Level 06

Section DD – Level 05

COMMUNAL OPEN SPACE

Artist impression

Communal Open Space

Level 33

L33 Communal Open Space

Level 33 serves as the highlight of the building, featuring a varied combination of internal and external communal spaces. Collectively spaces offers spectacular panoramic views of the Harbour, local surrounds, and city beyond.

With a generous setback alongside the pool, the landscape is designed to create an 'on-ground' feel, featuring a seamless flush planting edge that integrates with the pavement.

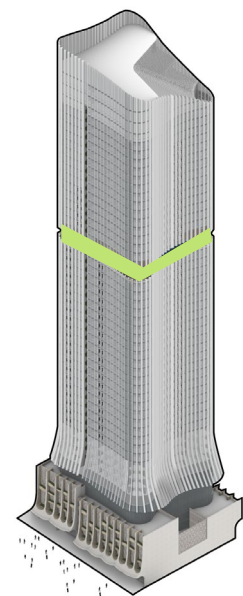
A variety of outdoor spaces, including lounge areas, dining options, and an outdoor gym, have been developed to ensure a varied amenity and rich program providing residents with a wide range of experiences.



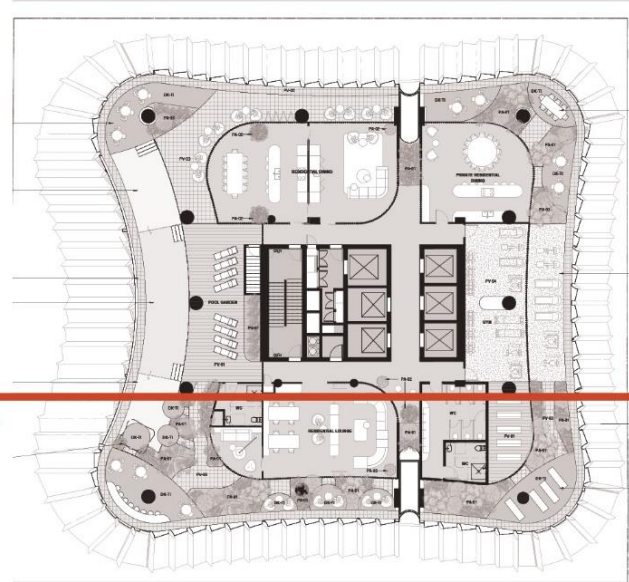
Precedent Images



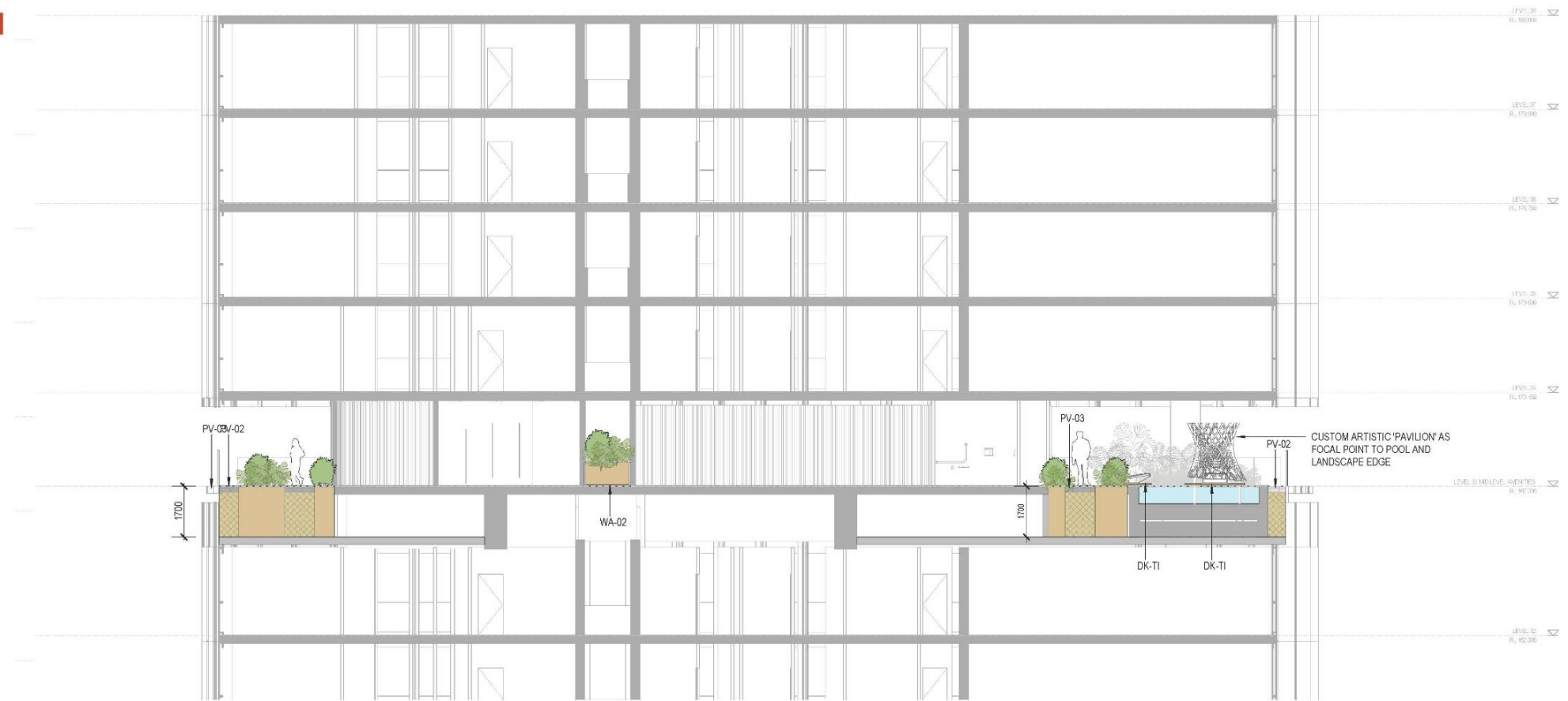
Level 33 COS Plan



Communal Open Space Landscape Sections



Key Plan



Section 3 – Level 33

Communal Space Within the Development

Communal Open Space

As per objective 3D-1 of the ADG, communal open space must comprise a minimum of 25% of a project's site area. Rooftop terraces and common rooms can be provided in lieu of ground floor COS on sites such as 153-157 Walker Street, that are within dense urban areas and business zones.

As noted below, the quantum of COS, including covered external spaces and common internal facilities equates to 58% for 153-157 Walker Street.

Additional to the COS provided, 153-157 Walker Street's proximity to a diverse selection of public open spaces, within walking distance, will provide a well-balanced and program-rich offering of passive and active spaces for residents to use.



1 LOWER LOBBY (LITTLE WALKER ST ENTRY)
1:400



2 UPPER LOBBY (WALKER ST ENTRY)
1:400



3 L01 HOTEL SPACE
1:400



4 L03 HOTEL COMMUNAL SPACE
1:400



5 L05 HOTEL COMMUNAL SPACE
1:400



6 L06 HOTEL COMMUNAL SPACE
1:400

COMMUNAL SPACE SCHEDULE			
CATEGORY	USE BY	AREA (m ²)	RATIO OVER SITE AREA (SITE AREA: 1927.913 m ²)
COMMUNAL OPEN SPACE			
EXTERNAL			
L33-EXTERNAL CoS	RESIDENTS	545	28.26%
TOTAL EXTERNAL		545	28.26%
INTERNAL			
L33-GYM	RESIDENTS	76	3.97%
L33-LOBBY	RESIDENTS	87	4.51%
L33-RESIDENTIAL DINING	RESIDENTS	160	8.29%
L33-RESIDENTIAL LOUNGE	RESIDENTS	94	4.86%
TOTAL INTERNAL		417	21.63%
HOTEL COMMUNAL SPACE			
EXTERNAL			
GF-GARDEN	PUBLIC & HOTEL VISITORS	102	5.31%
GF-WALKER ST SETBACK	PUBLIC & HOTEL VISITORS	99	5.12%
L01-GARDEN (INACCESSIBLE)	HOTEL STAFF	46	2.37%
L03-COURTYARD	HOTEL VISITORS	130	6.75%
L05-COURTYARD	PUBLIC & HOTEL VISITORS	155	8.01%
L06-COURTYARD	PUBLIC & HOTEL VISITORS	81	4.20%
LG-LITTLE WALKER ST SETBACK	PUBLIC & HOTEL VISITORS	164	8.52%
TOTAL EXTERNAL		777	40.28%
INTERNAL			
GF-HOTEL DINING	PUBLIC & HOTEL VISITORS	373	19.37%
GF-HOTEL LOBBY/LOUNGE	PUBLIC & HOTEL VISITORS	554	28.74%
L01-HOTEL LOBBY	HOTEL VISITORS	85	4.40%
L05-HOTEL LOUNGE	PUBLIC & HOTEL VISITORS	127	6.59%
L05-HOTEL MEETING ROOM	HOTEL VISITORS	29	1.51%
L06-HOTEL GYM	PUBLIC & HOTEL VISITORS	100	5.18%
L06-HOTEL POOL	PUBLIC & HOTEL VISITORS	192	9.93%
LG-HOTEL LOBBY/LOUNGE	PUBLIC & HOTEL VISITORS	311	16.14%
TOTAL INTERNAL		1751	90.83%



7 L33 RESIDENTIAL COMMUNAL SPACE
1:400

Communal Open Space Context Diagram

Communal Open Space

As per the ADG objective 3D-1, our site sits within a dense urban area. The COS on Level 33 is complemented by the surrounding public spaces and parks.





As demonstrated by the adjacent map, 153-157 Walker Street has good proximity to several open spaces of varying program and amenity.

Immediately adjacent to the site is Dorris Fitton Park, a small neighbourhood park offering mainly passive recreation.

Within a 10-15 minute walk are the following spaces:

- Victoria Cross Metro and VIC X Laneway
- Anderson Park
- Stanton Library and Ted Mack Civic Park
- St Leonards Park and North Sydney Oval
- Forsyth Park and Community Centre
- Milson Park
- Clark Park and Wendy Whiteley's Garden
- Gannura Reserve

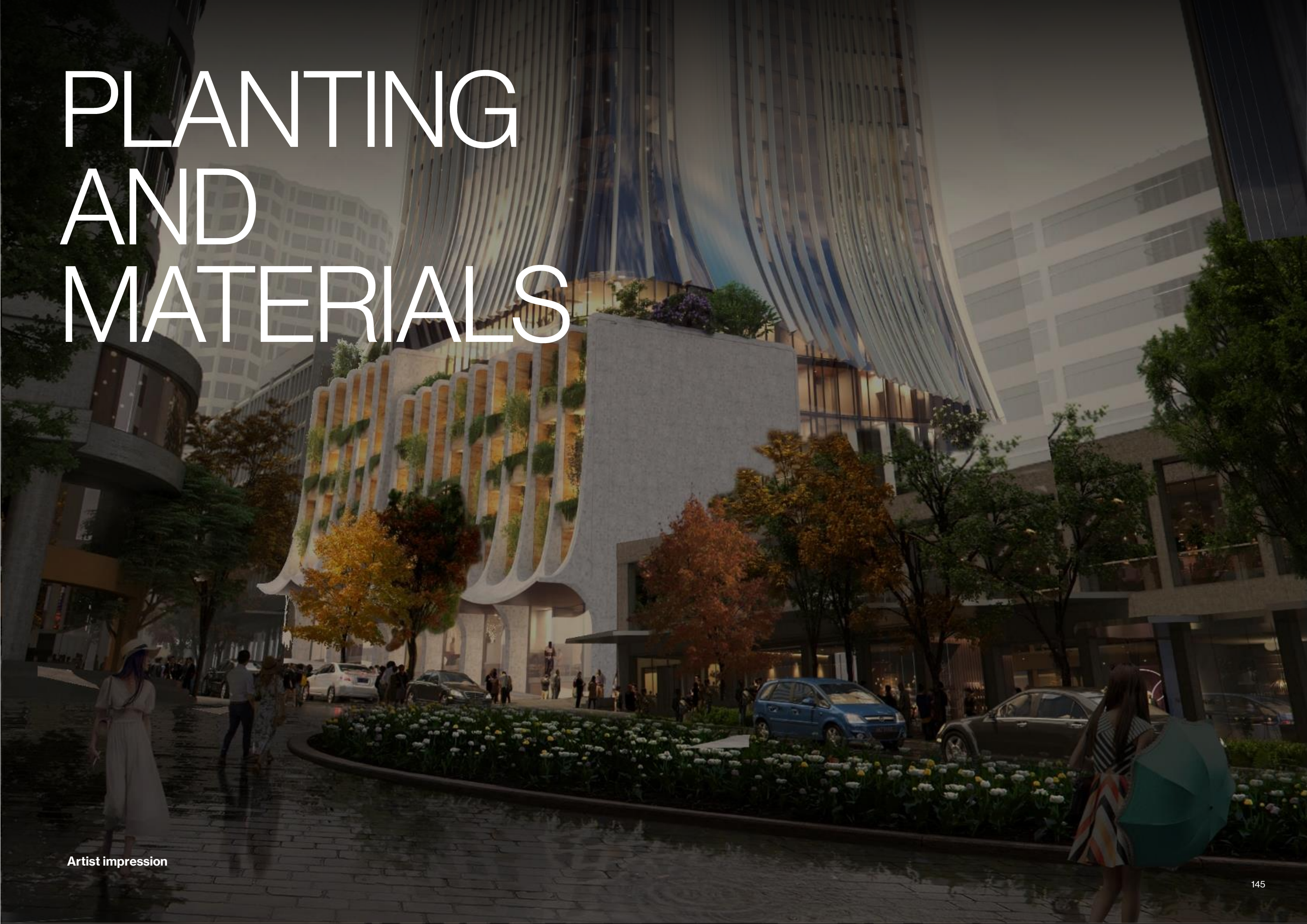
Key:

-  Neighbourhood small park
-  Neighbourhood reserve park
-  Harbourside Park
-  Mixed use civic park



Communal Open Space Context Diagram

PLANTING AND MATERIALS



Artist impression

Indicative Planting Palette

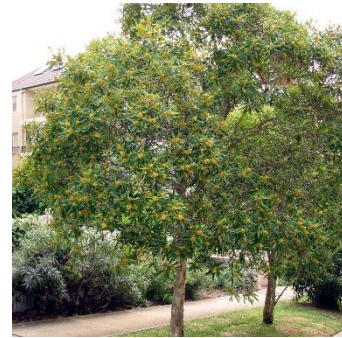
Small Trees



Elaeocarpus reticulatus



Syzygium australe



Tristaniopsis laurina



Waterhousea floribunda

Palm



Livistona-australis

Shrub



Bauera rubioides



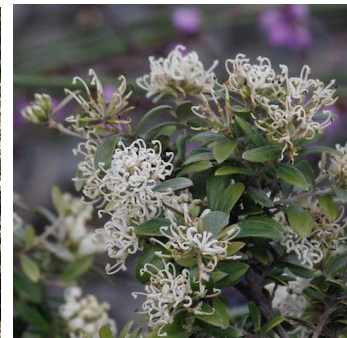
Crowea saligna



Darwinia fascicularis



Eriostemon myoporoides



Grevillea linearifolia



Grevillea sericea



Lambertia formosa



Pimelea linifolia



Platysace lanceolata



Telopea speciosissima



Westringia fruiticosa



Xanthorrhoea arborea



Xanthorrhoea arborea

Grasses



Dianella caerulea



Isolepis nodosa



Lomandra filiformis



Lomandra longifolia



Lomandra multiflora



Poa affinis



Themeda australis

Ferns



Adiantum hispidulum



Calochlaena dubia



Christella dentata



Cyanthea australis



Doodia aspera



Flabellifolium Sp



Gleichenia rupestris



Histiopteris incisa



Macrozamia communis



Sticherus flabellatus

Climbers



Clematis aristata



Hardenbergia violacea



Hibbertia dentata



Hibbertia scandens



Pandorea pandorana

Groundcovers



Actinotus helianthi



Dichondra repens



Pratia purpurascens



Viola hederacea



Wahlenbergia gracilis

Paving



PV-01
Timber Look Tile



PV-02
Unit Paver Type 01
Granite Paver



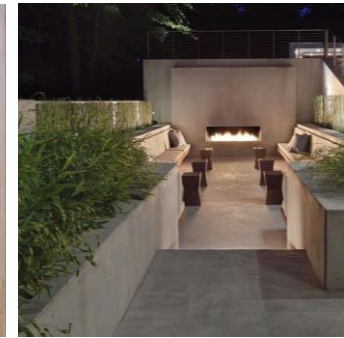
PV-03
Unit Paver Type 02
Travertine Paver

Decking



DK-T1
Timber

Walls and Planter Façades



WA-01
In-Situ Concrete Planter
Wall
Light Grey Colour



WA-02
GRC Planter Wall
White Concrete Look
Finish



FN-01
Façade Planter
Cladded with thin
sandstone batten