

ST MARYS RESOURCE RECOVERY FACILITY

Appendix K: Community Fact Sheet

St Marys Resource Recovery Facility

St Marys Recycling Pty Ltd, a subsidiary of Bingo Holdings Pty Ltd, is proposing to extend the existing resource recovery facility (RRF) at 25 Dunheved Circuit, St Marys, onto 21 Dunheved Circuit to facilitate the processing of 350,000 tonnes per annum of non-putrescible waste. The Proposal would involve the construction of a new shed, site office and amenities.

The Proposal would improve the recycling capacity of the Proposal site to allow for more waste to be recovered through the facility, and reduce the waste that goes directly to landfill.



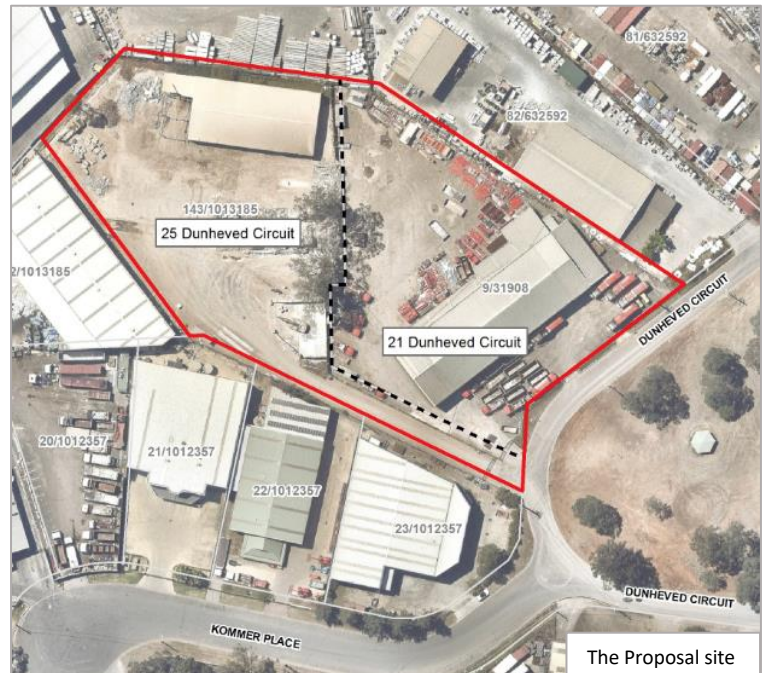
Working with local communities

The Proposal site is located within the St Marys Industrial Estate, 1.3km from the closest current residential area.

Nevertheless, Bingo is dedicated to working with local communities to ensure that all residents are kept informed, and are currently engaging with the local community to inform and improve the final development before it is submitted to the Department of Planning and Environment for assessment.

The community will also have an opportunity to provide feedback during the formal exhibition period after the EIS is submitted to the Department. The EIS will be exhibited for a minimum of 30 days.

If you have any queries, please contact Ros Dent, Environmental Manager on 0416 685 615 or email ros.dent@bingoindustries.com.au



Technical studies

An Environmental Impact Statement (EIS) is being prepared by Arcadis to assess the environmental and socioeconomic impacts of the Proposal. A range of technical studies have been undertaken in support of the EIS, including:

- Air quality
- Greenhouse gases
- Noise and vibration
- Water quality and hydrology
- Traffic and transport
- Visual amenity
- Phase 1 contamination

In addition, Arcadis have assessed the impact of the Proposal on soils, hazards and risks, biodiversity, heritage and waste management.

These technical studies will be summarised in the EIS, and will be available to the public during the exhibition period.

