

ATTACHMENT 3 STREAMS – AERIAL PHOTOS AND PLATES

Plate 1: Avon River
Tributary 19S



Photo A: October 2017

Plate 2: Avon River Tributary 19



Photo A: October 2016



Photo B: October 2016



Photo C: September 2016



Photo D: September 2016

Avon River
Tributary 19 Continued



Photo E: September 2016



Photo F: September 2016

Plate 3: Avon River Tributary 31A



Photo A: June 2018



Photo B: June 2018



Photo C: June 2018

Plate 4: Avon River
Tributary 31



Photo A: January 2018



Photo B: December 2017



Photo C: August 2016



Photo D: August 2016

Avon River Tributary 31 Continued

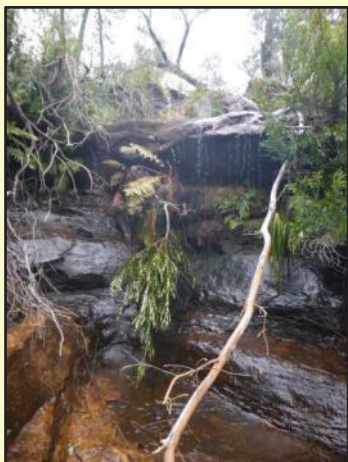


Photo E: August 2016



Photo F: August 2016



Photo G: August 2016



Photo H: August 2016



Photo I: August 2016



Photo J: August 2016

Avon River
Tributary 31 Continued



Photo K: August 2016



Photo L: August 2016



Photo M: July 2016

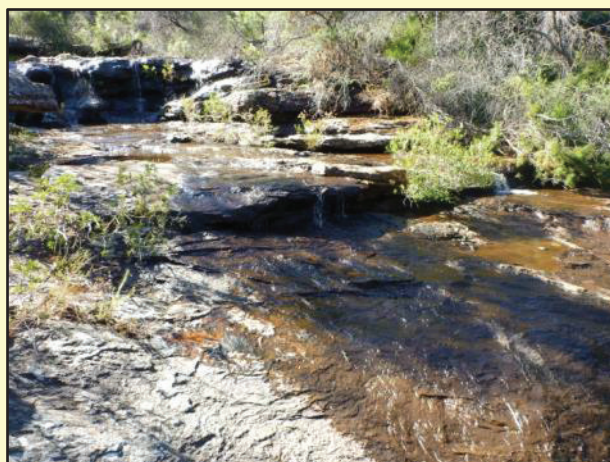


Photo N: July 2016

Plate 5: Avon River
Tributary 32A



Photo A: June 2018



Photo B: June 2018

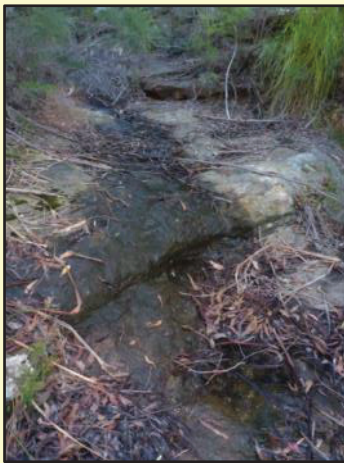


Photo C: June 2018

Plate 6: Avon River
Tributary 32



Photo A: September 2009



Photo B: September 2009



Photo C: September 2009



Photo D: September 2009

Avon River Tributary 32 Continued

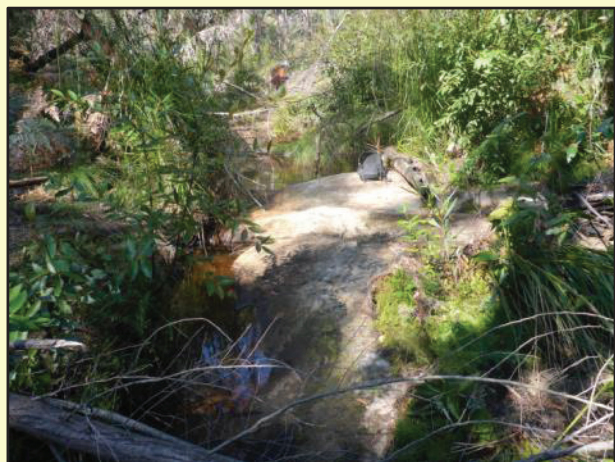


Photo E: September 2009



Photo F: September 2009



Photo G: September 2009



Photo H: September 2009

Plate 7: Avon River

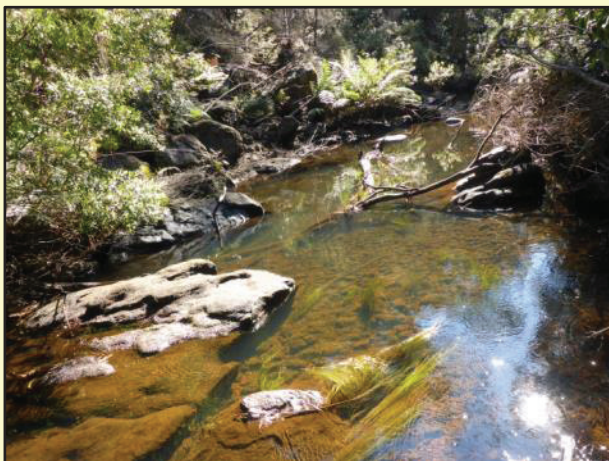


Photo A: October 2017



Photo B: October 2017



Photo C: October 2017



Photo D: October 2017

Plate 8: Donalds Castle Creek Tributary 8B

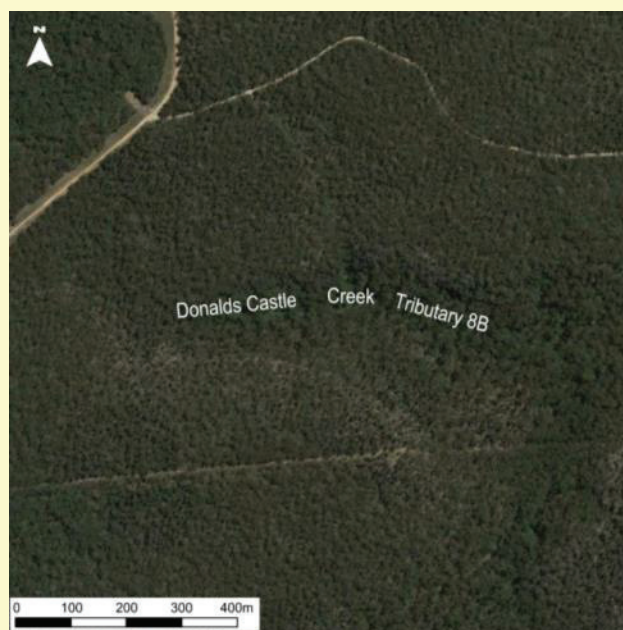


Photo A: November 2017

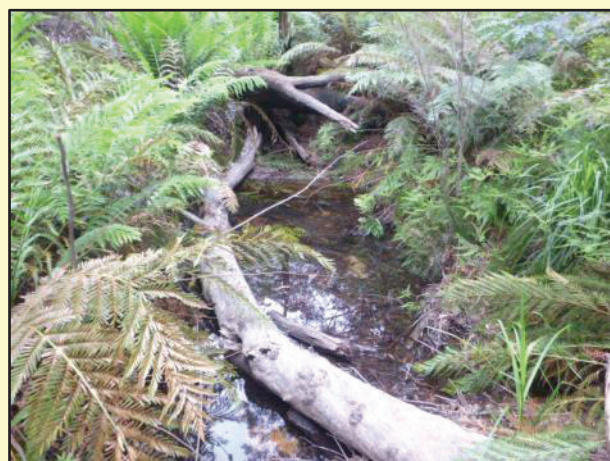


Photo B: November 2017

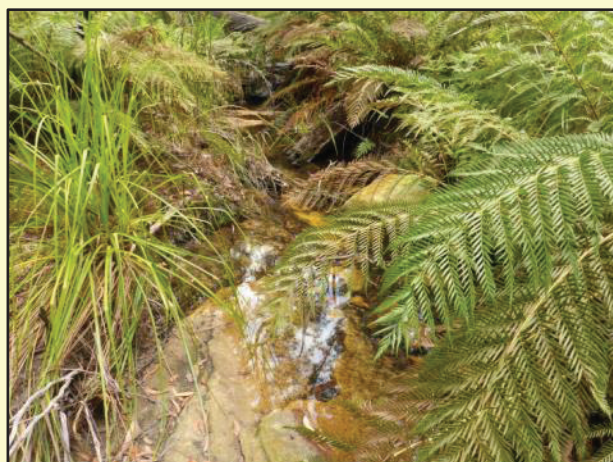


Photo C: November 2017



Photo D: November 2017

Plate 9: Donalds Castle Creek Tributary 8



Photo A: January 2017



Photo B: December 2016



Photo C: December 2016

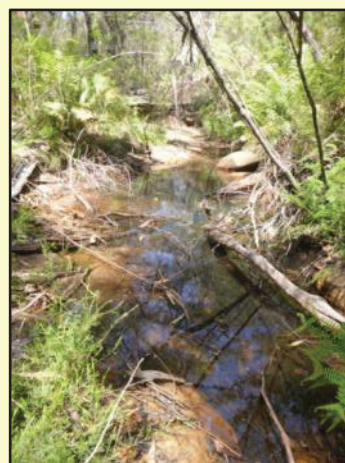


Photo D: December 2016

Donalds Castle Creek Tributary 8 Continued



Photo E: December 2016

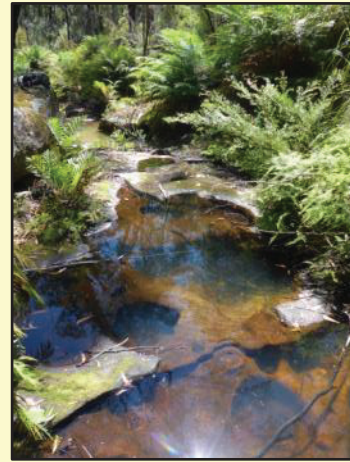


Photo F: December 2016



Photo G: November 2016

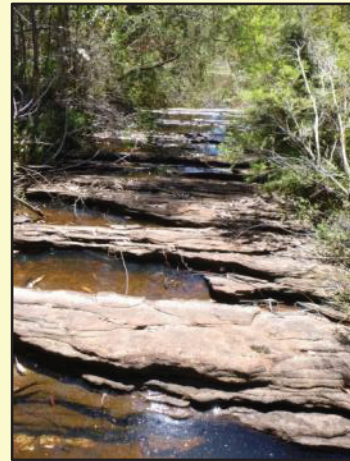


Photo H: November 2016

Plate 10: Donalds Castle Creek
Tributary 9



Photo A: June 2017



Photo B: November 2016



Photo C: November 2016



Photo D: November 2016

Plate 11: Donalds Castle Creek Tributary 10

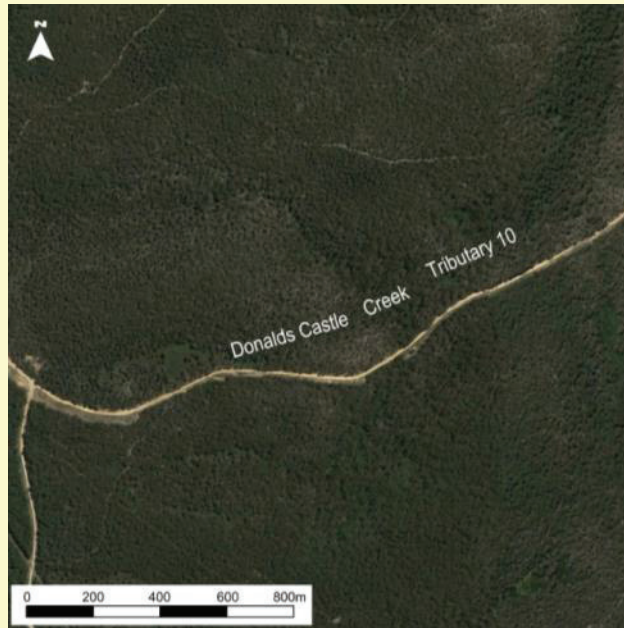


Photo A: November 2016



Photo B: November 2016



Photo C: November 2016



Photo D: November 2016

Donalds Castle Creek Tributary 10 Continued



Photo E: November 2016

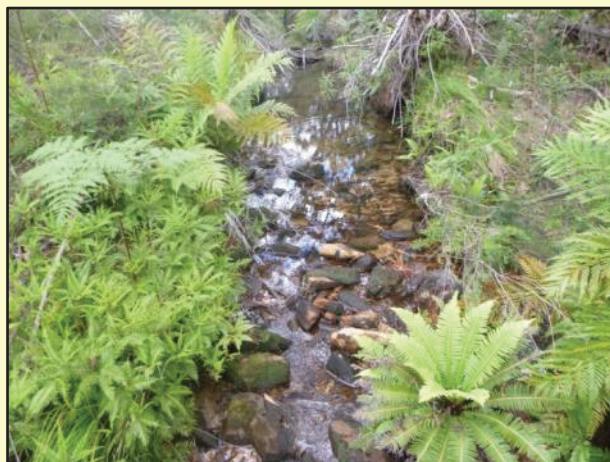


Photo F: November 2016

Plate 12: Donalds Castle Creek
Tributary 10C

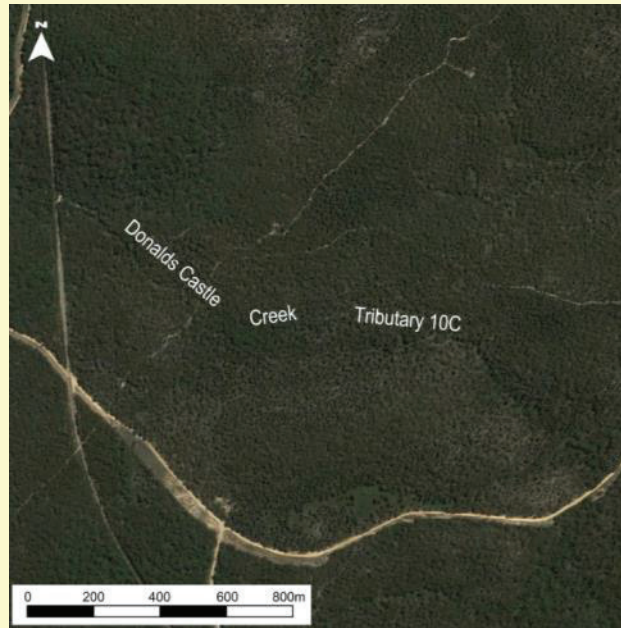


Photo A: June 2017



Photo B: June 2017



Photo C: June 2017

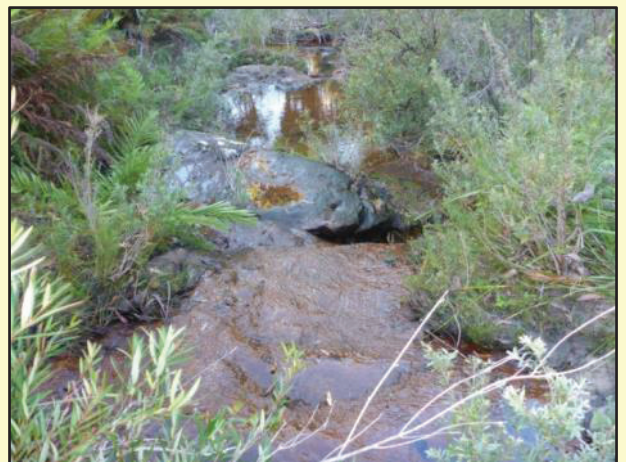


Photo D: June 2017

Plate 13: Donalds Castle Creek



Photo A: June 2017



Photo B: June 2017

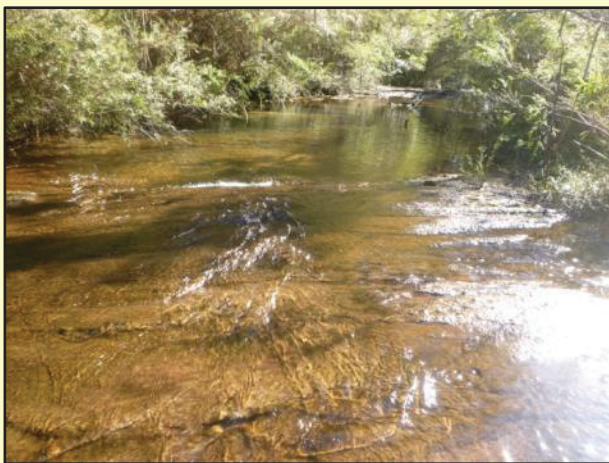


Photo C: June 2017



Photo D: June 2016

Donalds Castle Creek Continued



Photo E: June 2016



Photo F: June 2016

Plate 14: Lake Avon
Tributary 6



Photo A: November 2018

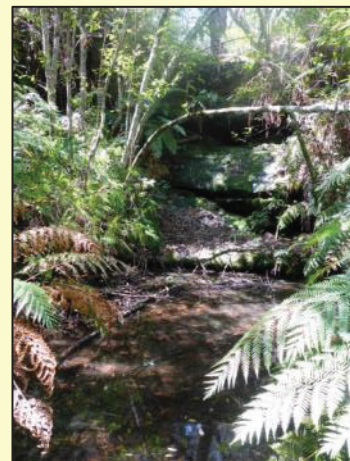


Photo B: November 2018



Photo C: October 2018



Photo D: October 2018

Plate 15: Lake Avon
Tributary 8



Photo A: May 2018



Photo B: May 2018



Photo C: April 2018



Photo D: April 2018

Plate 16: Lake Avon
Tributary 13A



Photo A: October 2017



Photo B: May 2017



Photo C: May 2017

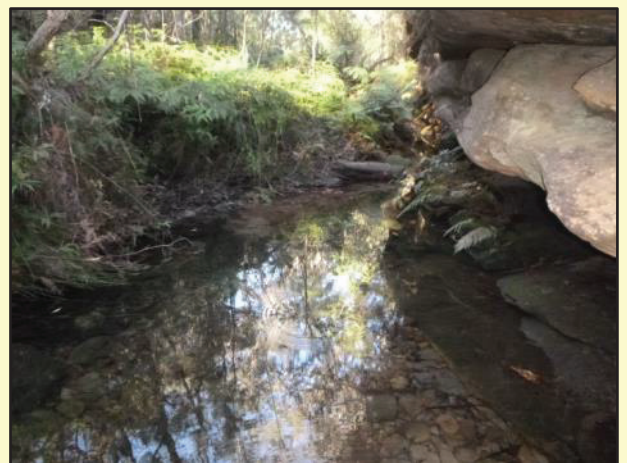


Photo D: May 2017

Plate 17: Lake Avon
Tributary 13F



Photo A: June 2018



Photo B: June 2018



Photo C: May 2018



Photo D: May 2018

Plate 18: Lake Avon
Tributary 13

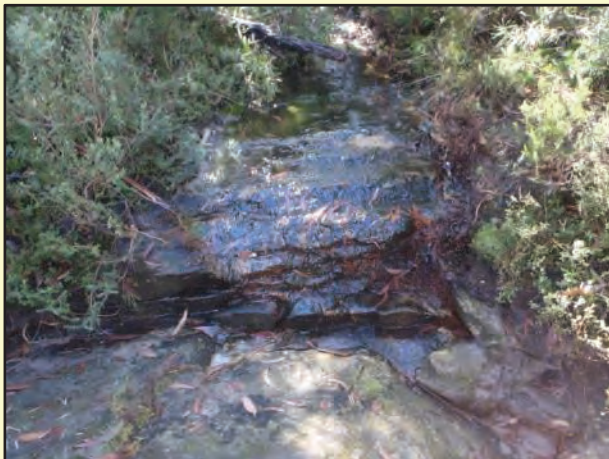


Photo A: May 2017



Photo B: May 2017



Photo C: May 2017



Photo D: December 2016

Lake Avon
Tributary 13 Continued



Photo E: December 2016



Photo F: December 2016



Photo G: December 2016



Photo H: December 2016

Plate 19: Lake Avon
Tributary 17



Photo A: November 2017



Photo B: December 2017



Photo C: December 2017



Photo D: December 2017

Plate 20: Cordeaux River
Tributary 29



Photo A: July 2017

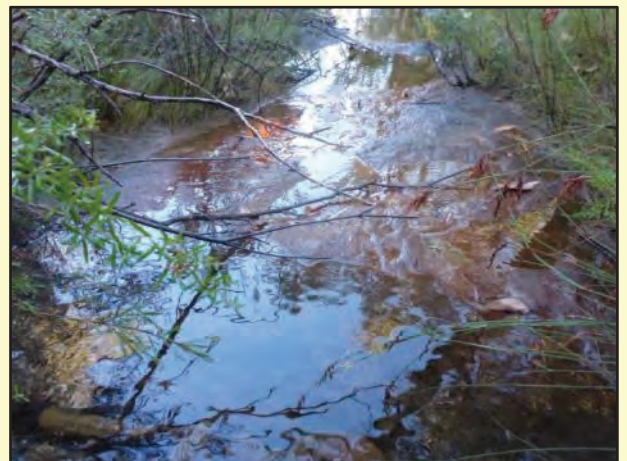


Photo B: July 2017



Photo C: July 2017



Photo D: July 2017

Cordeaux River Tributary 29 Continued



Photo E: July 2017



Photo F: June 2017

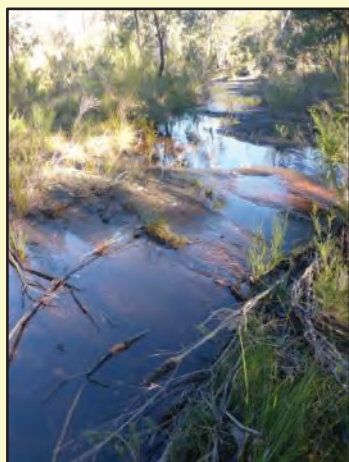


Photo G: June 2017



Photo H: June 2017



Photo I: December 2016



Photo J: December 2016

Cordeaux River
Tributary 29 Continued



Photo K: October 2016



Photo L: October 2016

Plate 21: Cordeaux River
Tributary 31



Photo A: August 2017



Photo B: July 2017



Photo C: July 2017

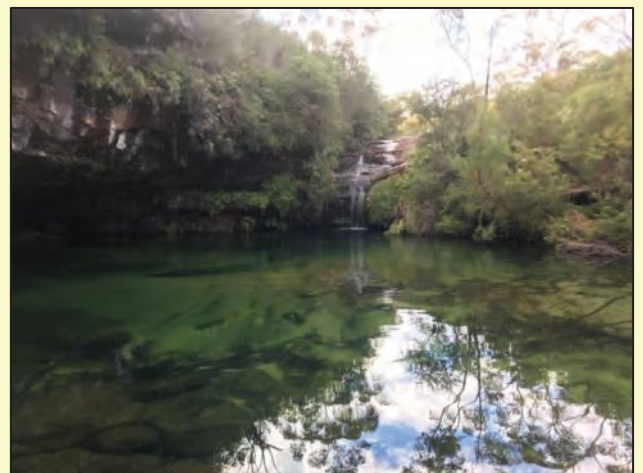


Photo D: July 2017

Cordeaux River
Tributary 31 Continued



Photo E: August 2017



Photo F: July 2017

Plate 22: Cordeaux River
Tributary 31C



Photo A: August 2017



Photo B: August 2017



Photo C: August 2017



Photo D: August 2017

Cordeaux River
Tributary 31C Continued



Photo E: August 2017

Plate 23: Cordeaux River



Photo A: September 2017

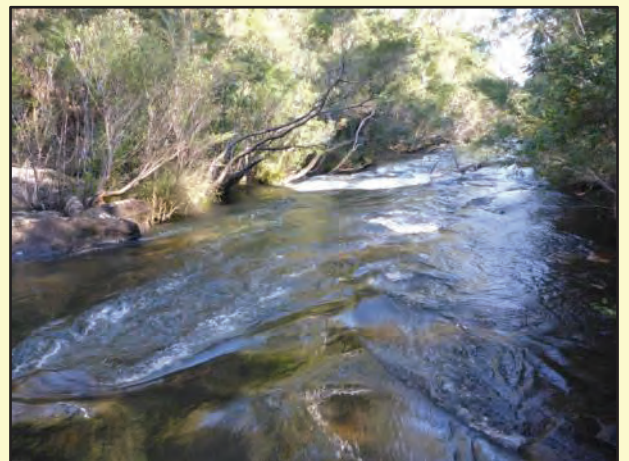


Photo B: September 2017



Photo C: September 2017



Photo D: September 2017

Cordeaux River Continued



Photo E: September 2017

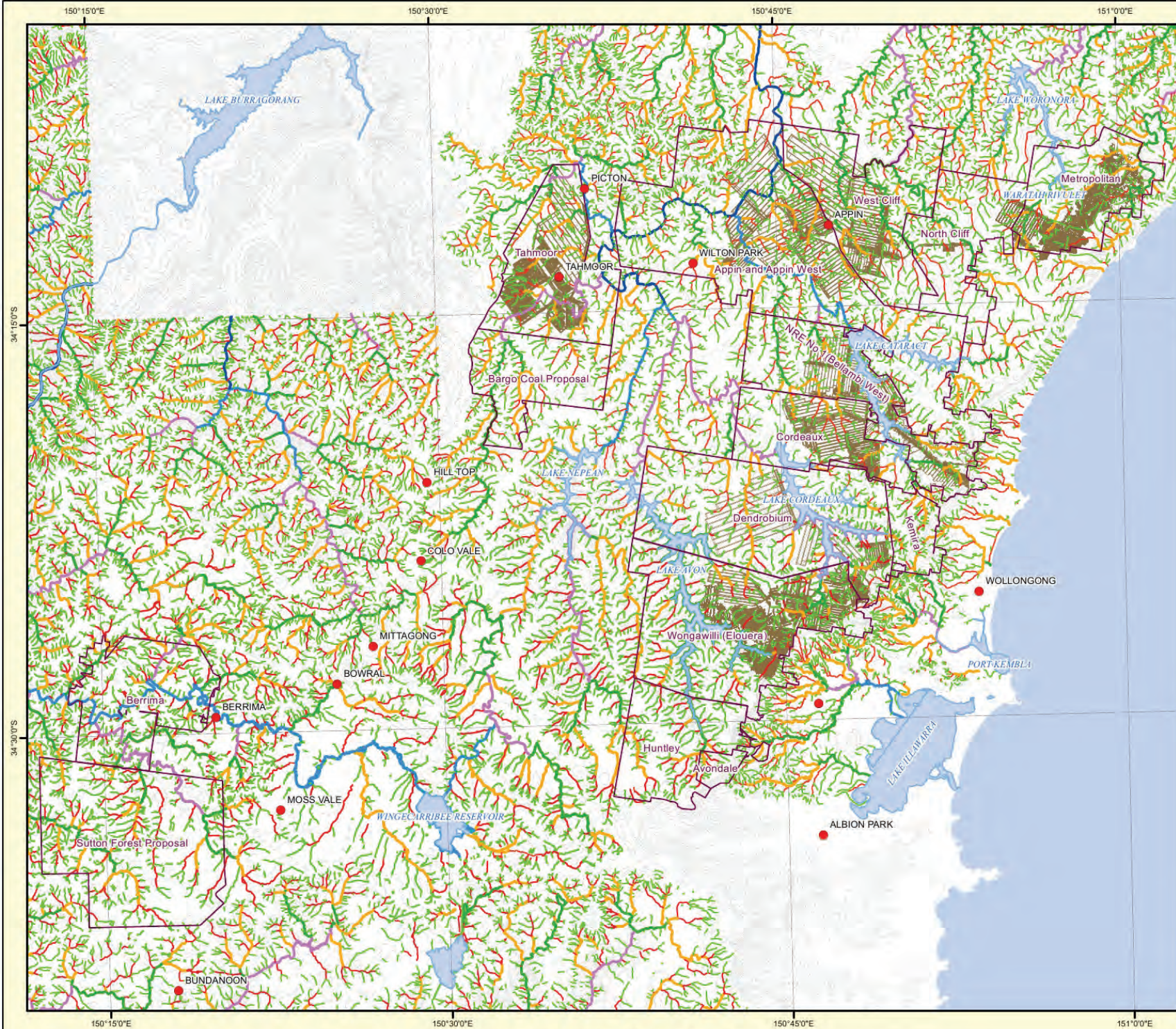


Photo F: September 2017



Photo G: September 2017

ATTACHMENT 4 SOUTHERN COALFIELD – COLLIERY HOLDINGS, MINE WORKINGS AND DRAINAGE LINES



Legend

- Major Water Bodies
- Topographic Contour (10 m)
- Colliery Holdings
- Mine Workings
- Watercourses**
 - 1st order
 - 2nd order
 - 3rd order
 - 4th order
 - 5th order
 - 6th order
 - 7th order

Note: Coal Mine Workings for Berrima, Huntley, Avondale and Kemira collieries and other historic workings not shown.

Disclaimer

The approximate location of coal mine workings is based on digital data supplied by the Department of Primary Industries- Minerals. No warranty is expressed or can be implied to any other person as to the accuracy of the data or that it is free from any error or omission. Accordingly the State of New South Wales, the Department of Planning and the Department of Primary Industries and their servants and agents expressly disclaim any liability whatsoever for the consequences arising from any act done or omission made in reliance by others on this locational information.

Map 7



NSW GOVERNMENT
Department of Planning

SOUTHERN COALFIELD INQUIRY

**SOUTHERN COALFIELD -
COLLIERY HOLDINGS,
MINE WORKINGS AND
DRAINAGE LINES**

Edition Date: June 2008

Author: S.Mavaddati



Projection: MGA94
Geodetic Datum: GDA94

