

LEVEL 33

Claudine Malanum <claudine@level33.com.au>

Re: 17-24 Loftus Crescent, Homebush - Final Architectural Drawing Set

felix@pcen.com.au <felix@pcen.com.au>

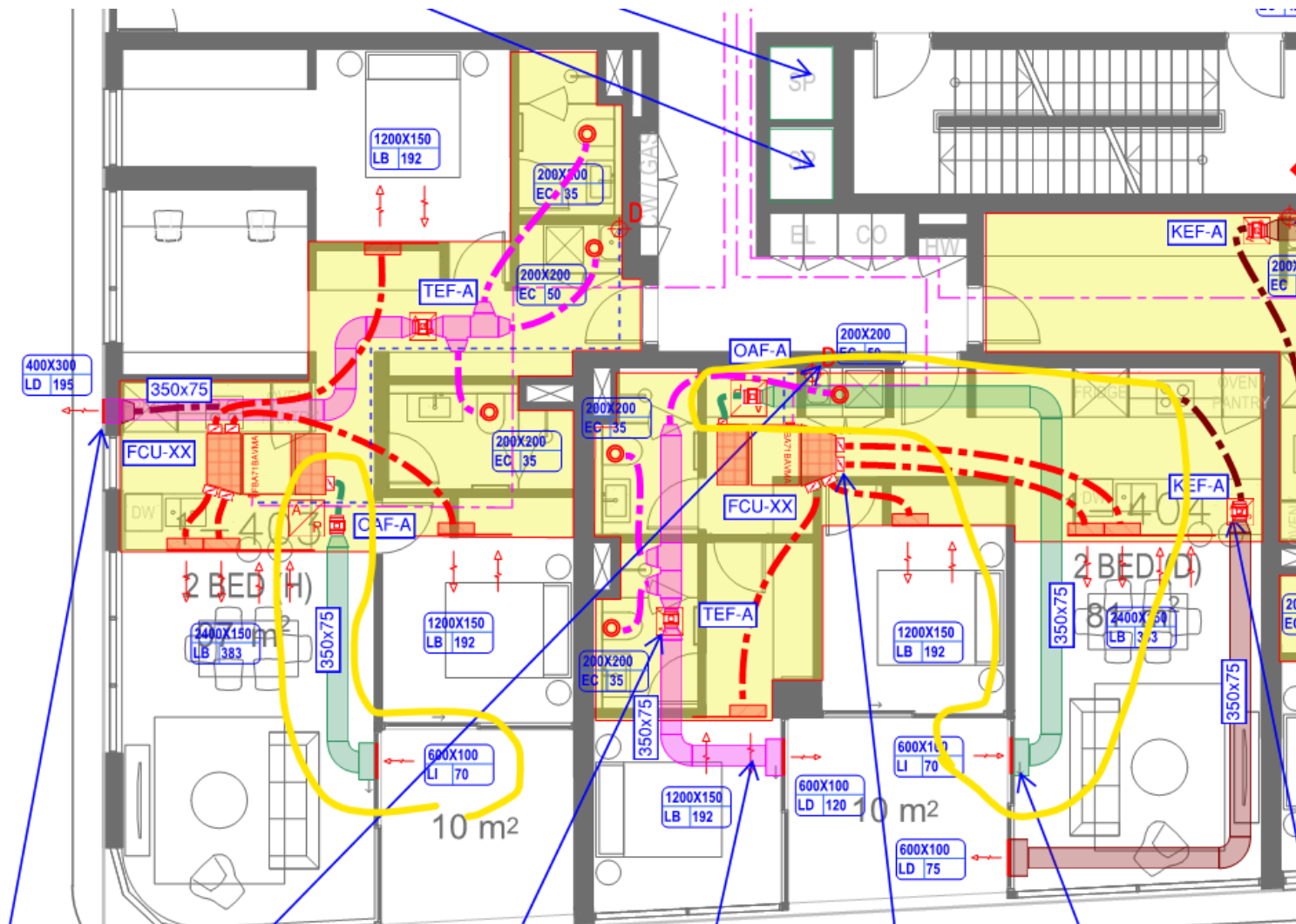
Wed, Oct 1, 2025 at 1:15 PM

To: Charbel Kazzi <charbel@level33.com.au>

Cc: Claudine Malanum <claudine@level33.com.au>, Anthony Brogan <abrogan@ethosurban.com>, Leo Tsui <leot@pwna.com.au>, Keith Lam <Keith.lam@dko.com.au>, "Sonny.Oh" <Sonny.Oh@dko.com.au>, Ben White <BenW@pwna.com.au>, Katie Waters <kwaters@ethosurban.com>, Chantelle Pepper <cpepper@ethosurban.com>

Hi Charbel,

The main changes trigger by acoustic is the adding of the outside air system to all apartments. Shown in green in each apartment, example below:



Cheers,

Felix Ye

ME | CPEng | NER | RPEQ

Director

Premium Consulting Engineers Pty Ltd