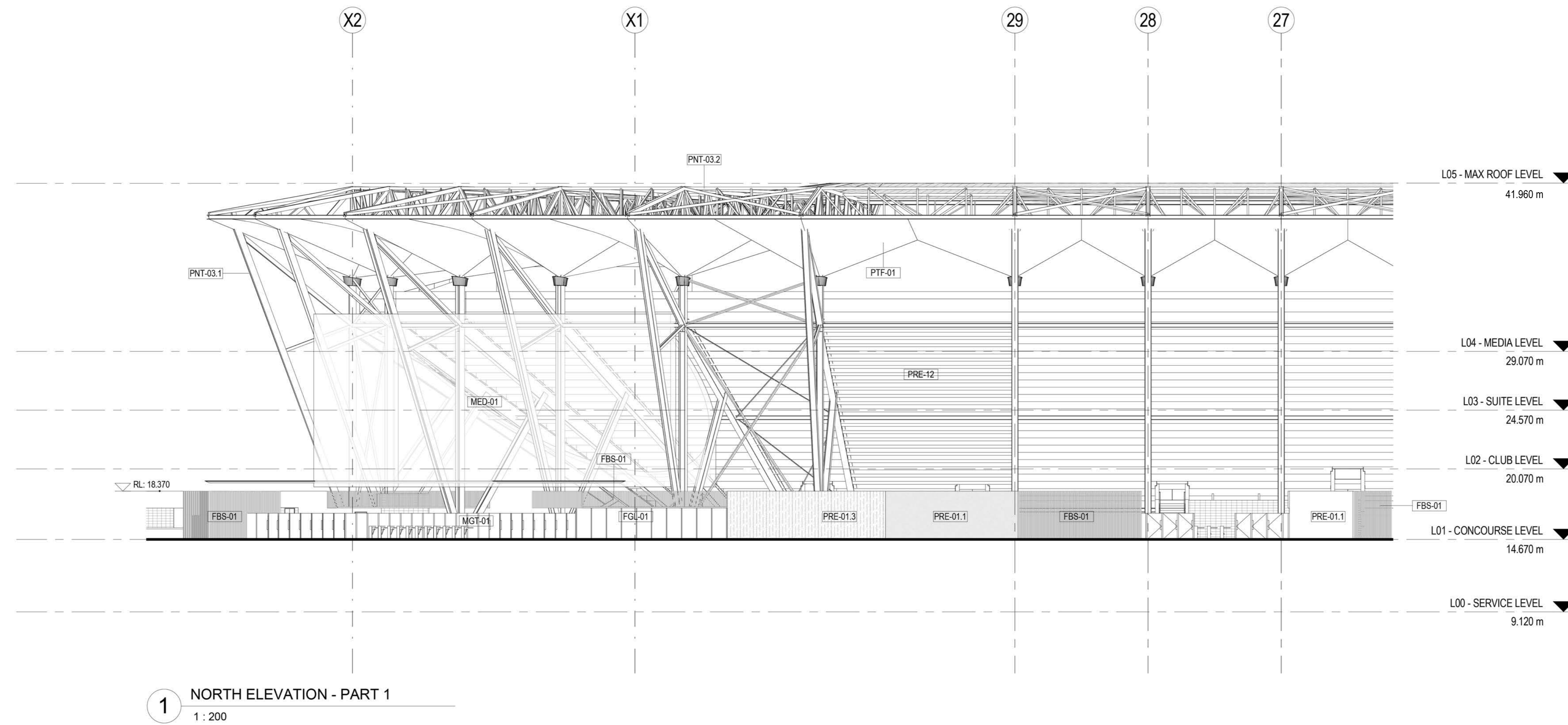
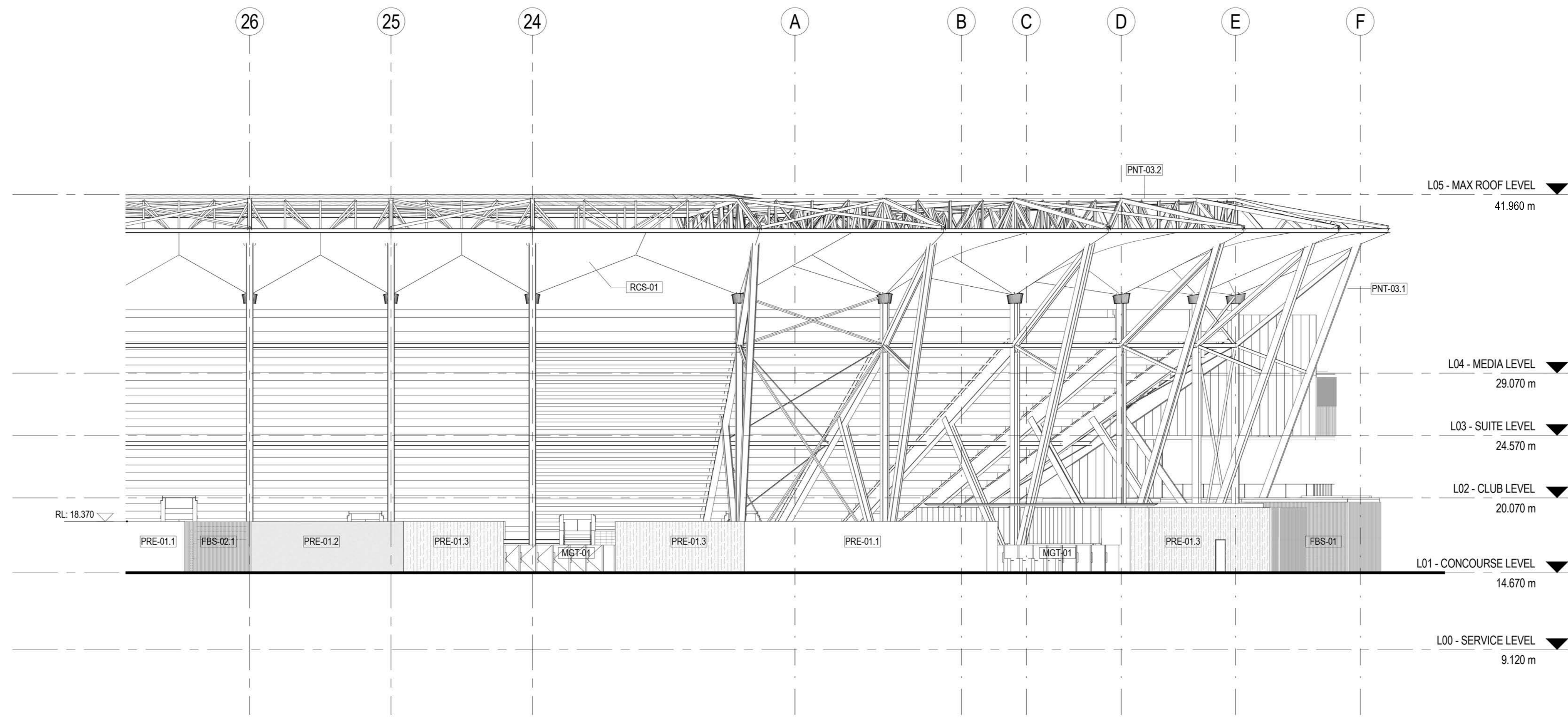


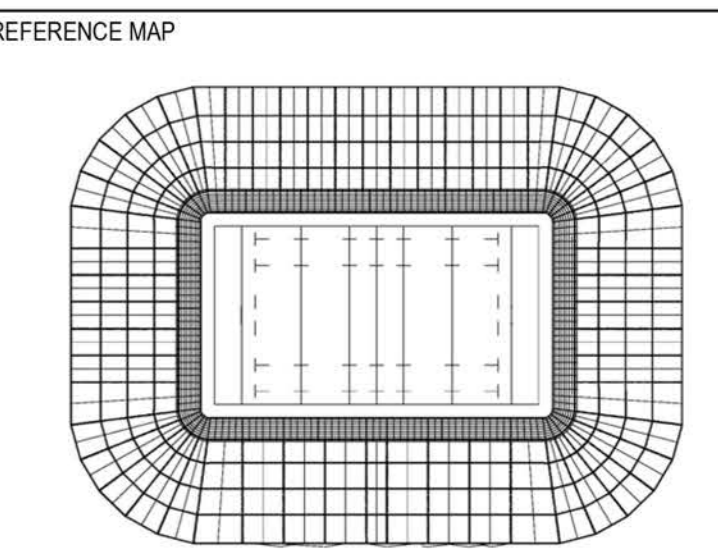
NOTE: REFER TO
LANDSCAPE DRAWINGS FOR
SOFT LANDSCAPE DESIGN



1 NORTH ELEVATION - PART 1
1 : 200



2 NORTH ELEVATION - PART 2
1 : 200



STRUCTURAL, CIVIL & SERVICES ENGINEER:
aurecon

COST CONSULTANT:

LANDSCAPE ARCHITECT:
ASPECT Studios™

NOTES:
DRAWING HAS REPLACED 3.00.001

DISCLAIMER
USE FIGURED DIMENSIONS ONLY DO NOT SCALE FROM DRAWING CHECK & VERIFY ALL DIMENSIONS ON SITE BEFORE FABRICATION OR SET OUT.

This drawing is diagrammatic and shows general arrangements. Any information involving measurement of the works shall be taken from documented dimensions on the architectural and structural drawings, workshop drawings by others and conditions on site. The works shall comply with the contract conditions and Statutory Regulations.

All rights reserved. This work is copyright and cannot be reproduced or copied in any form or by any means graphic, electronic or mechanical, including photocopying without the written permission of Populous architects in association. Any license, expressed or implied, to use this document for any purpose whatsoever is restricted to the terms of the agreement or implied agreement between Populous and the instructing party.

THIS DRAWING IS AN UNCONTROLLED COPY, UNLESS NOTED OTHERWISE.

REV	DESCRIPTION	DATE
1	FOR INFORMATION	03.02.2017
2	FOR INFORMATION	06.02.2017
3	FOR INFORMATION	10.02.2017
4	ISSUED FOR DA	17.02.2017
5	ISSUED FOR DA	21.02.2017
6	FOR INFORMATION	24.02.2017
7	ISSUED FOR DA	28.02.2017
8	ISSUED FOR DA	27.04.2017

ARCHITECT:
POPULOUS™
100/102/104/106
SYDNEY
Suite 108
59 Great Buckingham Street
Parramatta, NSW 2150
AUSTRALIA
t: +61(0) 2 9444 3400
f: +61(0) 2 3339 9188
www.populous.com
E-mail: sport.au@populous.com

PROJECT
WEST SYDNEY STADIUM
PARRAMATTA

SHEET TITLE
ELEVATION
PART NORTH

PROJECT NUMBER 16-7344-10	REVIEWED AB
COORDINATED NM	APPROVED SG
SCALE 100% @ A0 1 : 200	NORTH POINT

PHASE DD	DRAWING NUMBER AD_3.01.001	REVISION 8
-------------	-------------------------------	---------------